



Hawaiian Sea Life

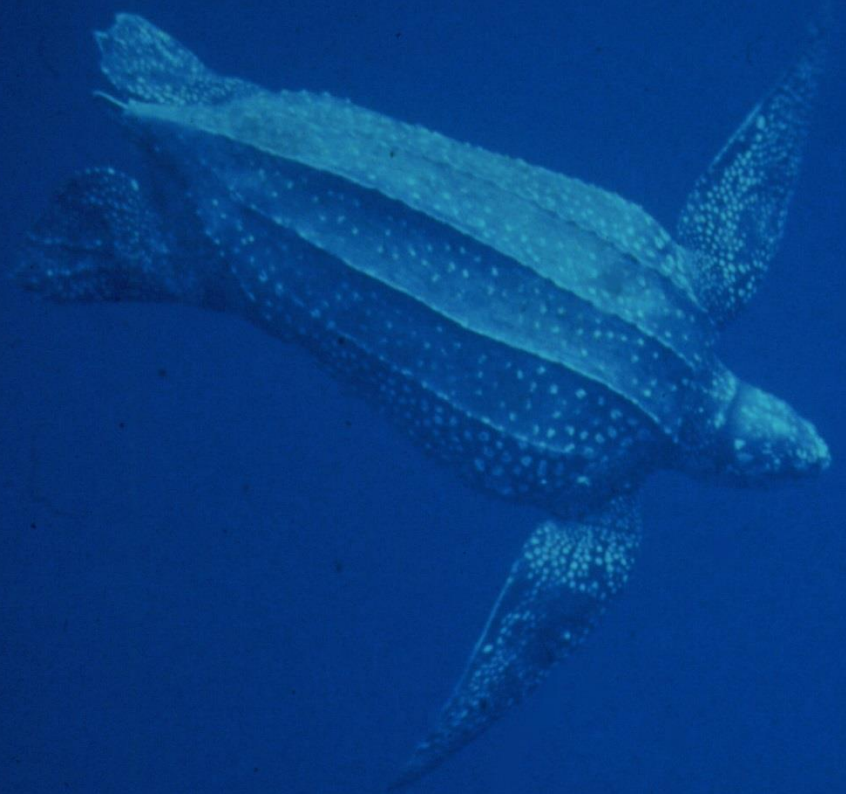
Hawaiian Green Turtle, *Chelonia mydas*



Leatherback



オサガメ



Hawksbill
Honu'ea
タイマイ





Olive Ridley



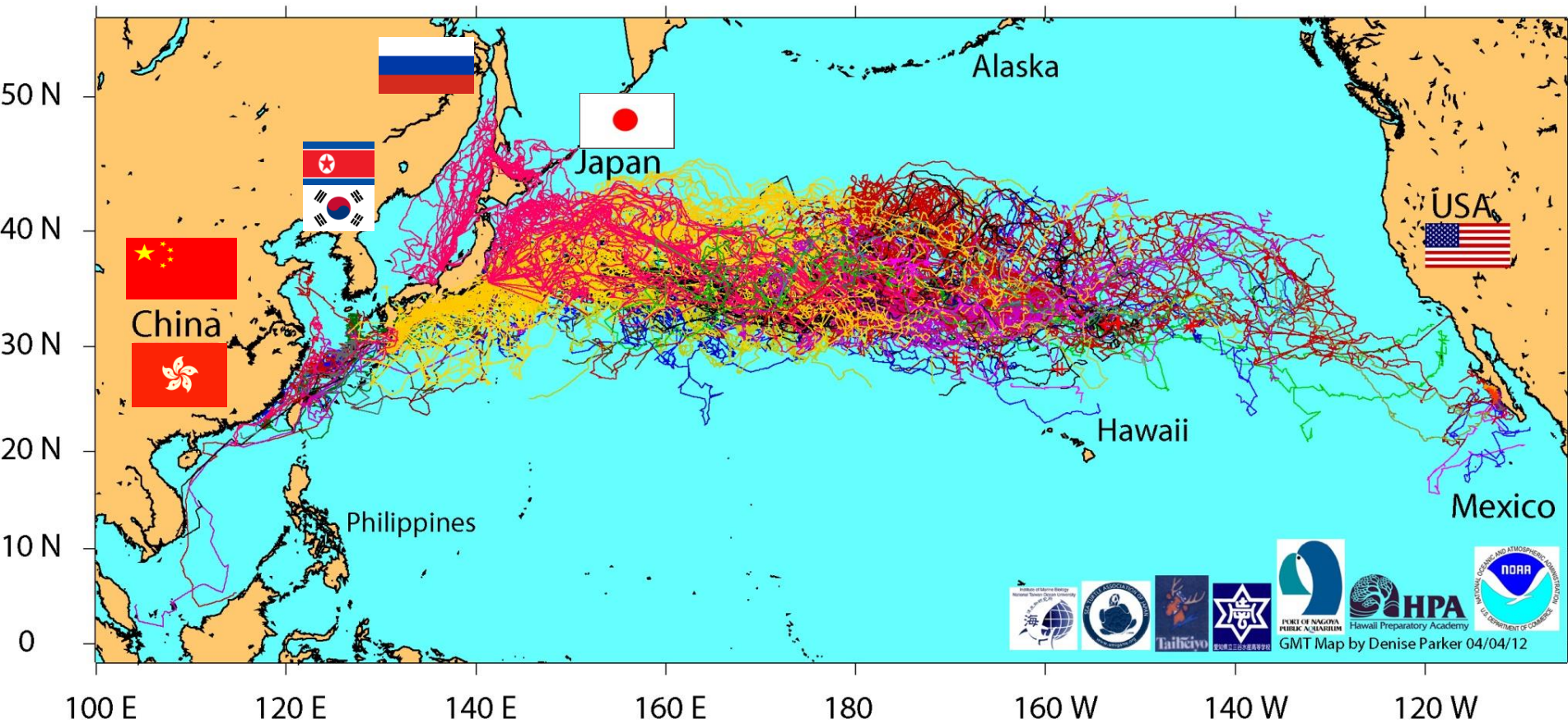
ヒメウミガメ

アカウミガメ



North Pacific Loggerhead
アカウミガメ (北太平洋個体群)

1997-2012 Satellite Tracking of Pelagic North Pacific Loggerheads



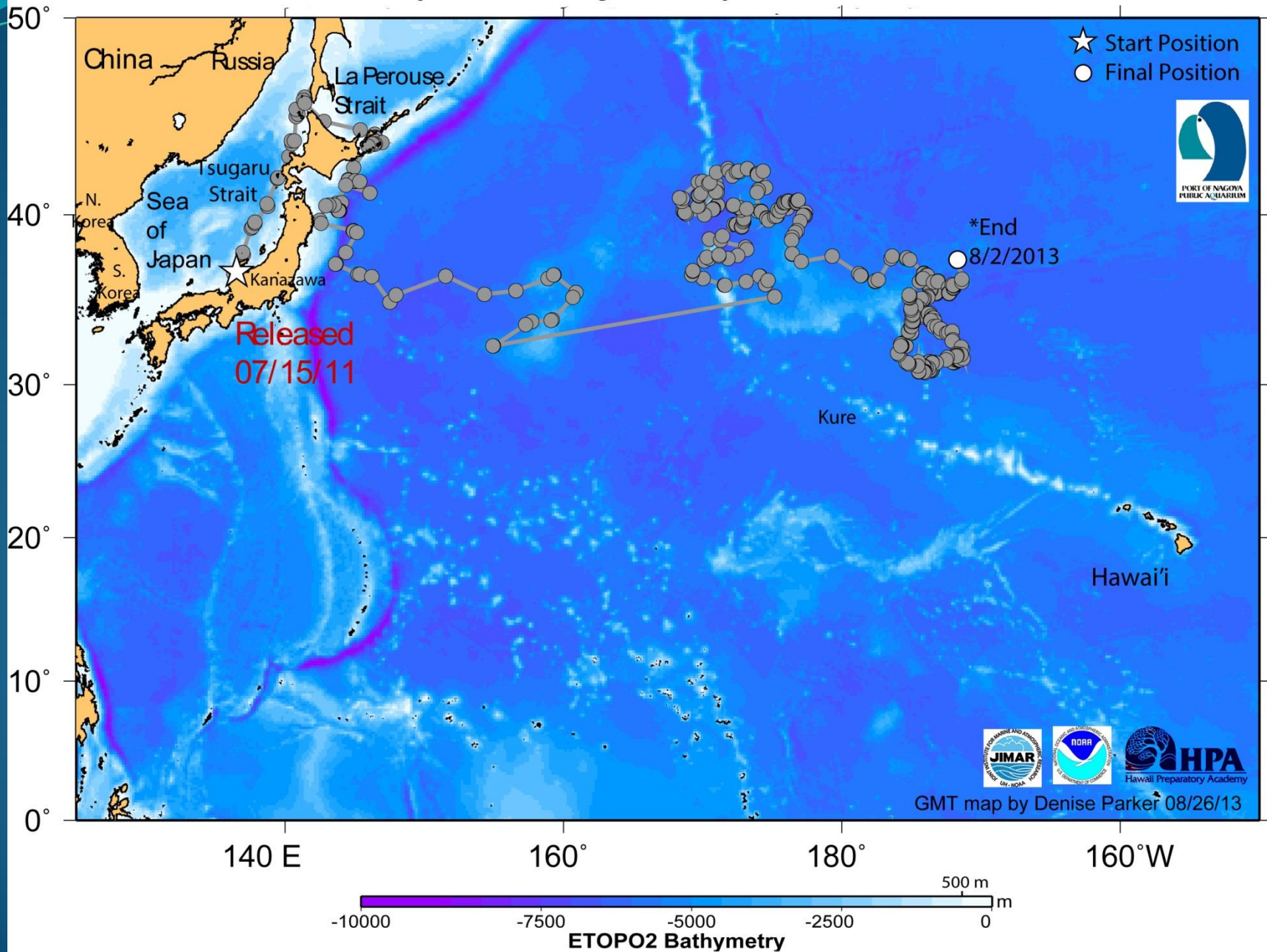
2011-2013 movement of juvenile loggerhead turtle, "52", ID 22270

released offshore of Kanazawa, Sea of Japan

SCL: 35.4 cm

Days transmitting: 749 days

Distance traveled: 15,730 km



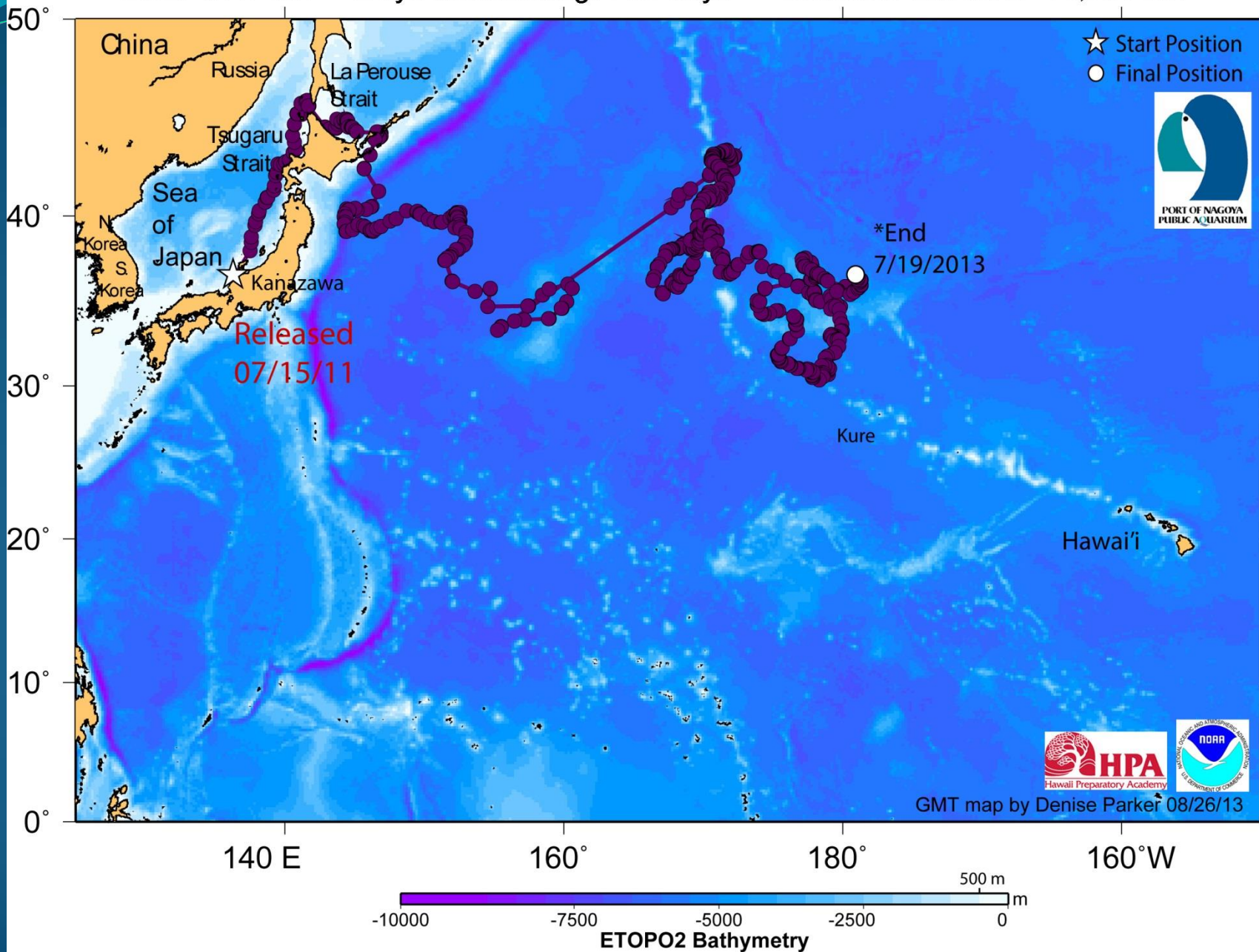
2011-2013 movement of juvenile loggerhead turtle "53", ID 50135

released offshore of Kanazawa, Sea of Japan

SCL: 37.7 cm

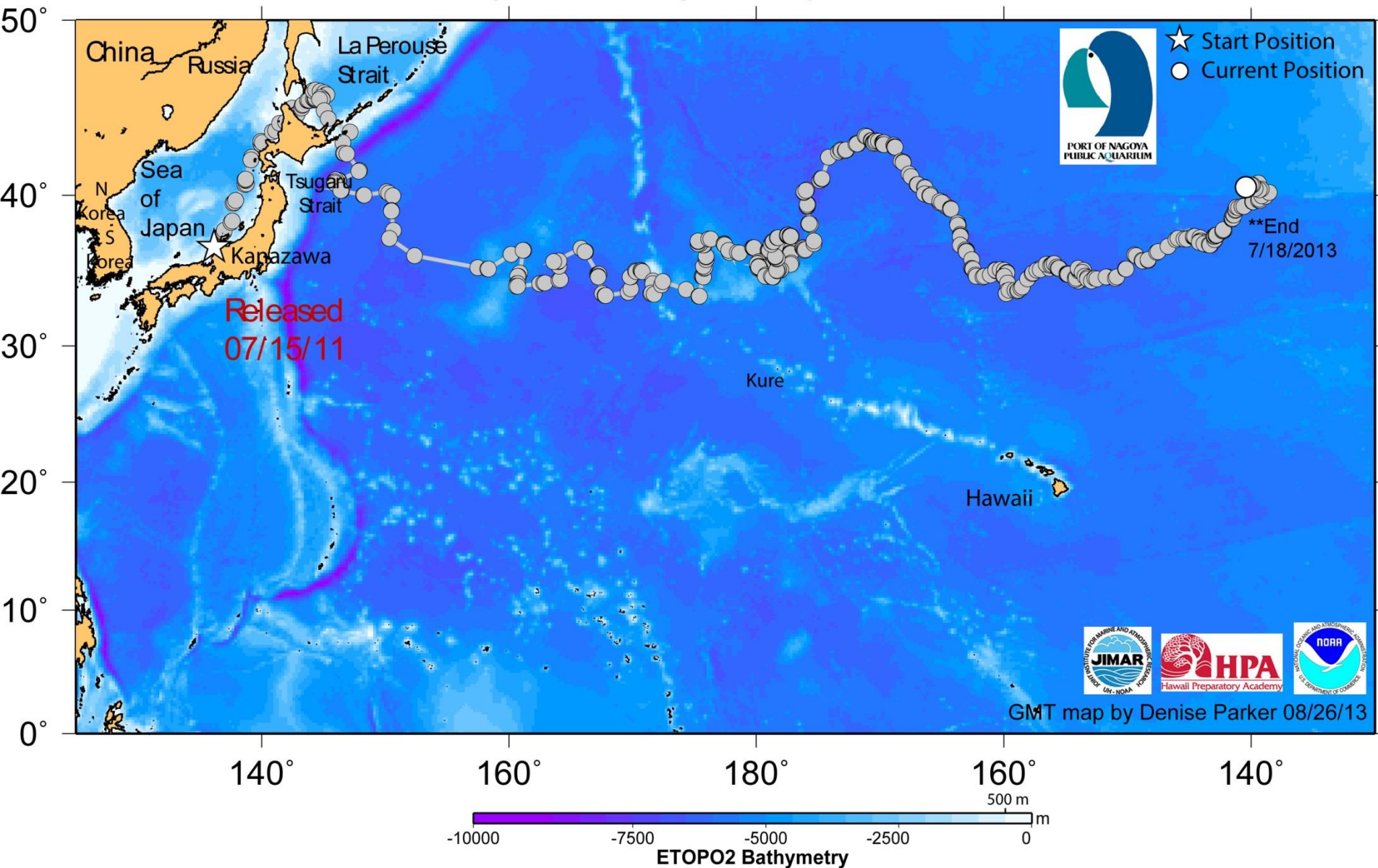
Days transmitting: 735 days

Distance traveled: 11,763 km



2011-2013 movement of juvenile loggerhead turtle, "51", ID 25695
released offshore of Kanazawa, Sea of Japan

SCL: 32.2 cm Days transmitting: 729 days Distance traveled: 13,913 km

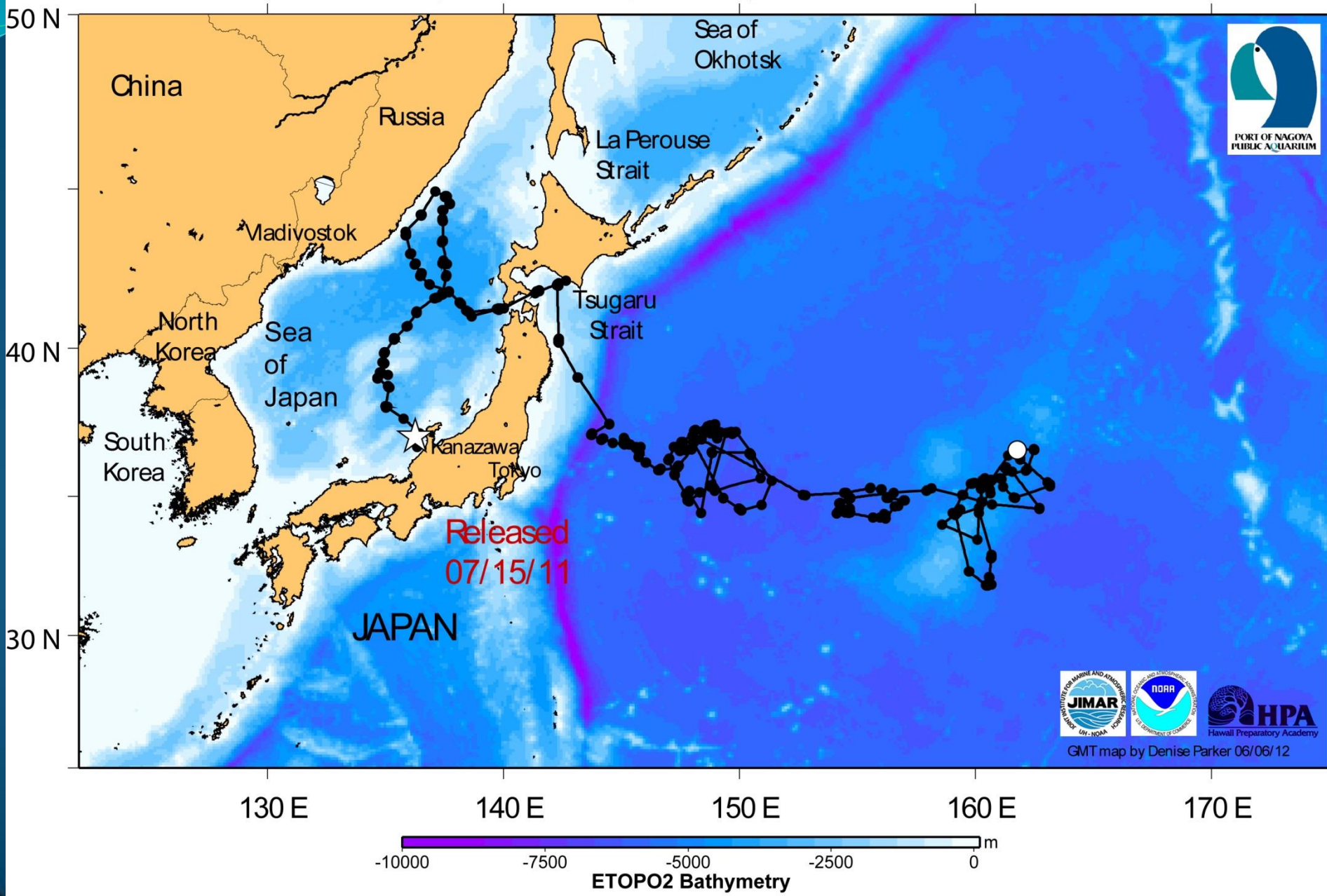


2011-2012 movement of sub-adult loggerhead turtle, "8", ID 53759
released offshore of Kanazawa, Sea of Japan

SCL: 61.9 cm

Days transmitting: 327 days

Distance traveled: 10,492 km



Restocking marine resources event at Xunliao, Guangdong, in June 2012





保 壽 堂



Releasing Turtles for Research



研究目的のウミガメ放流



NOAA Fisheries

NATIONAL MARINE
FISHERIES SERVICE
MARINE
TURTLE
PROGRAM

ISLANDSNOW

NAME TAG

Sea Life Park

Sea Life Park

Sea Life Park
Animal Care

Sea Life Park Hawaii

An aerial photograph of Sea Life Park Hawaii. The central focus is a large, irregularly shaped pool with bright blue water, containing several sea turtles. To the left, a rocky waterfall cascades into a smaller pool. In the foreground, a large circular structure with a red roof and a glass-enclosed interior is visible. The park is surrounded by paved walkways, lush greenery, and palm trees. A small boat is docked on the right side of the image.

Partnership Research







INTERNATIONAL SYMPOSIUM ON SEA TURTLES IN HIWASA '88 JULY 30 - AUG 1, 1988
日和佐海亀国際会議'88・1988年7月30-8月1日



第15回日本ウミガメ会議（津屋崎会議） 2004年11月12～14日



第20回 日本ウミガメ会議 in 宮崎 2009年11月27日～29日 於：サンホテルフェニックス





CHINA/USA Sea Turtle Workshop NOAA CAFS USGS

Hawaii 2014



Successful Conservation Programs That Endure are Best Built With Local Communities as Their Foundation

持続的で成功する保全プログラムに
最も重要なのは
地域との連携・地元主導の運営

Excerpt from: Yoshimasa Matsuzawa. 2009. Sea Turtle Conservation and Sea Turtle Association of Japan.

“What kind of world would open up when we solve the issues that pose threats to sea turtles today, sufficiently recover the population, and remove them from the Red List? We envision a world in which a diversity of relationships exists, as it must have been so for a long time, between sea turtles and people who live outside of urban centers: those who eat sea turtles; those who do not eat sea turtles because of their loyalty to an ancestor who was saved by a sea turtle; those who eat sea turtle eggs; craftsmen who create eyeglass frames using hawksbill shells; fishermen who offer sake to a sea turtle caught in his net; fishermen who carry out a burial for a dead sea turtle in expression of sympathy; fishermen who enshrine in their family altar a piece of driftwood that a sea turtle used as a pillow; children who play at the beach mocking the tracks of sea turtles that came to nest; children who surround a sea turtle and torment it, and a young fisherman who comes by to rescue the turtle. To bring back rich and plentiful nature that allows and tolerates such a diversity of values and world views, we believe, is the natural direction toward which we should be moving.”

Excerpt from: Yoshimasa Matsuzawa. 2009.

足立辰雄・所伸之編著「現代社会を読む経営学（14）サステナビリティと経営学—共生社会を実現する環境経営」2009年、ミネルヴァ書房（京都）より

第11章 ウミガメ保護と日本ウミガメ協議会 松沢慶将

「現在ウミガメに脅威となっている主な問題を解決して、十分に個体数を復活させ、レッドリストから外したその先にはどのような世界が広がるのだろうか？われわれが思い描くのは、もともと長い間存在したであろう、地方で暮らす人々とウミガメの多様な関係である。ウミガメを食べる人、ウミガメに救われた祖先の遺言を忠実に守りウミガメを食べない人、ウミガメの卵を食べる人、タイマイの鱗板から眼鏡の縁を作る職人、網にかかったウミガメに酒をふるまう漁師、死んだウミガメを哀れみ埋葬する漁師、ウミガメが枕にしていた流木を神棚に祀る漁師、ウミガメの足跡を真似て砂浜で遊ぶ子供たち、ウミガメを囲みいじめる子供たち、それを制してウミガメを助ける若い漁師。このような多様な価値観を許容する豊かな自然を取り戻すことが、本来の進むべき方向であると思う。」(P.207)