

Aloha

FROM

HAWAII

Magnificent Marine Turtles of the Hawaiian Islands

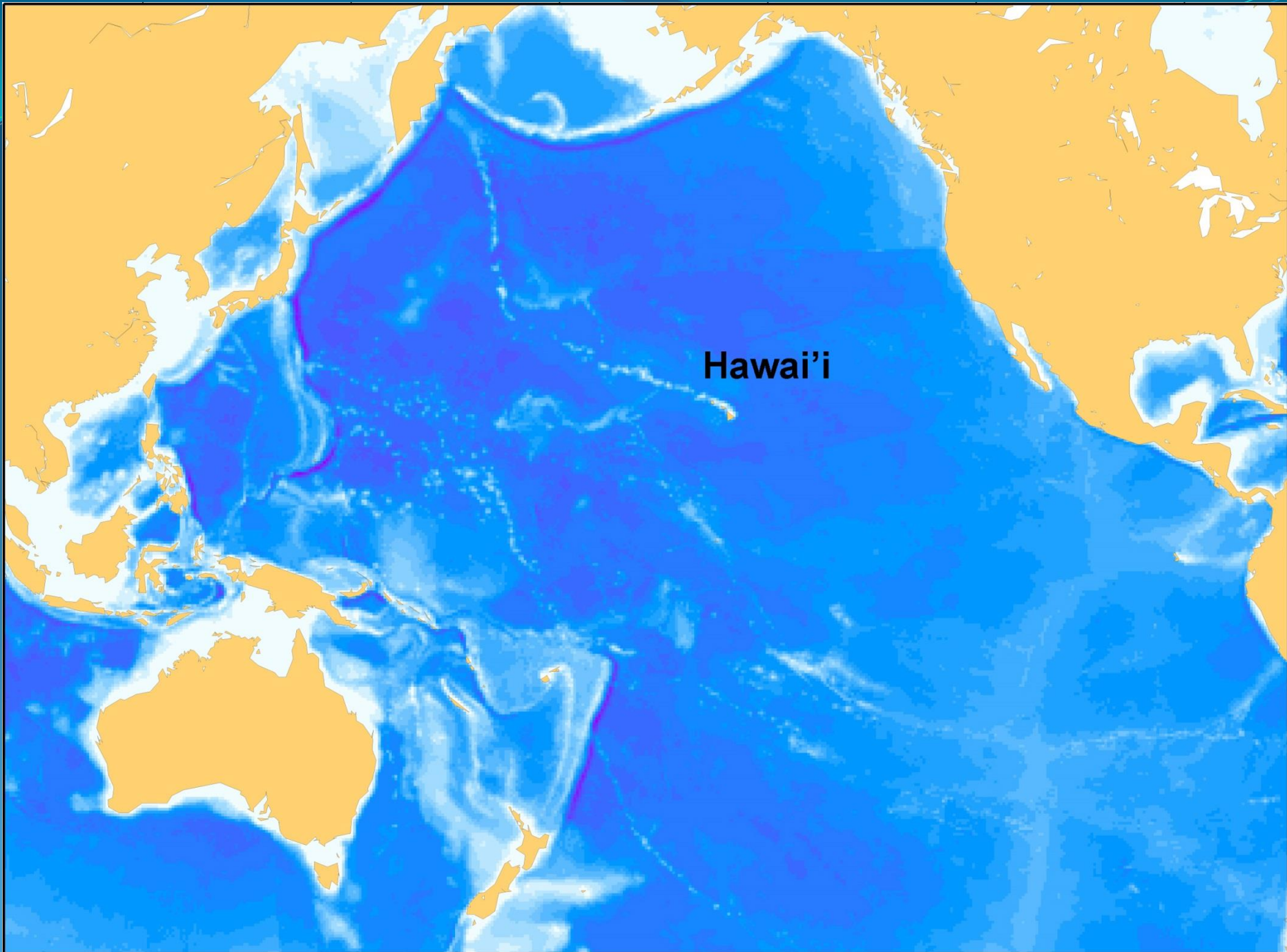
素晴らしきハワイ諸島の
ウミガメたち



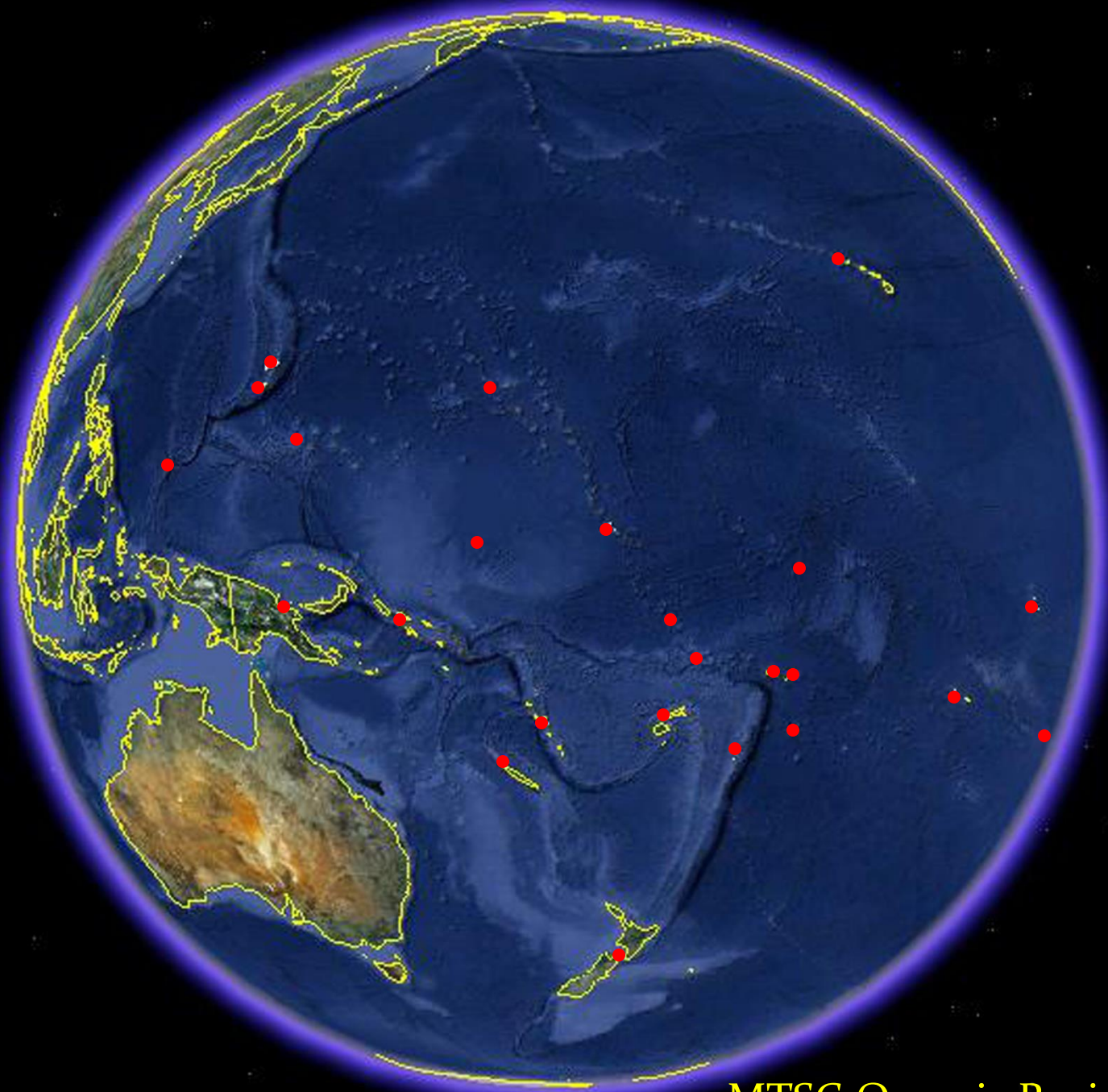


**An Amazing 40-Year
Rise to Abundance**

驚異的な回復を遂げた40年



Hawai'i



MTSG Oceania Region

KAUAI

Lihue

To Toronto (Can)...4750 m

OAHU

Honolulu

MOLOKAI

Lahaina

MAUI

Kahului

To Los Angeles (U.S.A)...2560 m

LANAI

KAHOOLAWE

To Sydney (Aus)...5310 m

HAWAII

Hilo

Kona

HAWAIIAN ISLANDS

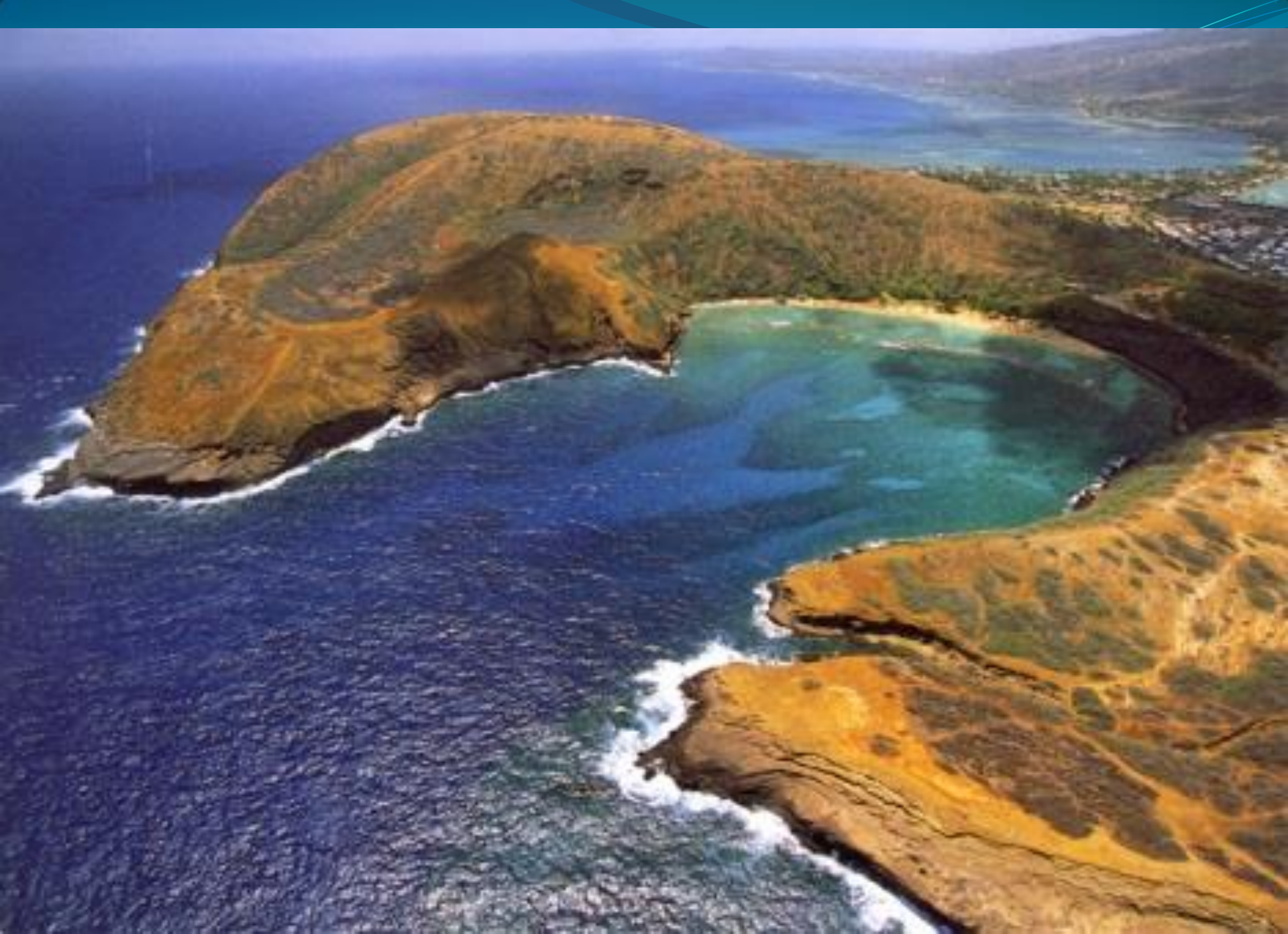


NIHAU

To Tokyo (Jap)...3850 m







アオウミガメ
Honu



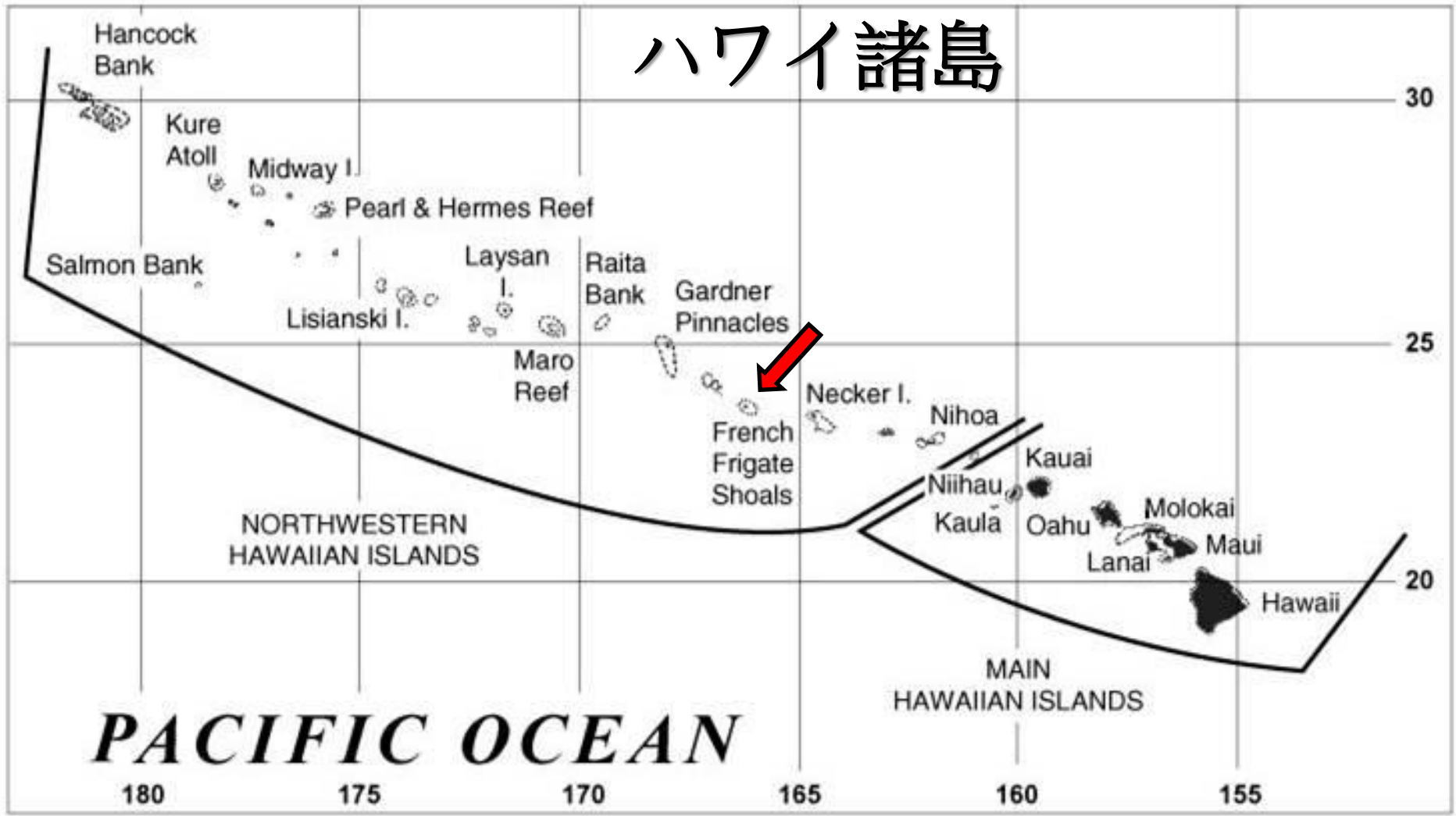
HAWAIIAN GREEN SEA TURTLE



Hawaiian Green Turtle *Chelonia mydas*



ハワイ諸島



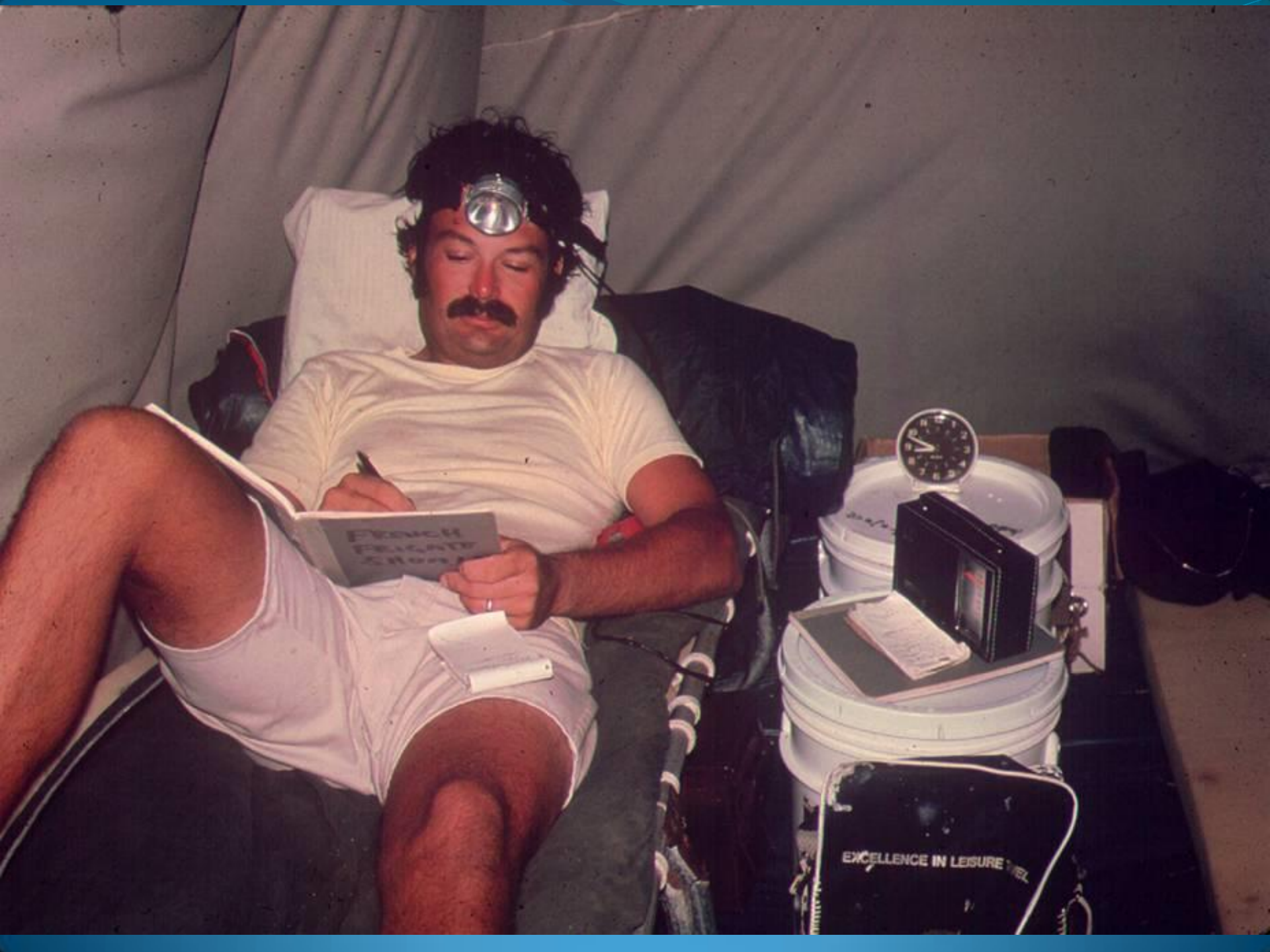
The Hawaiian Archipelago











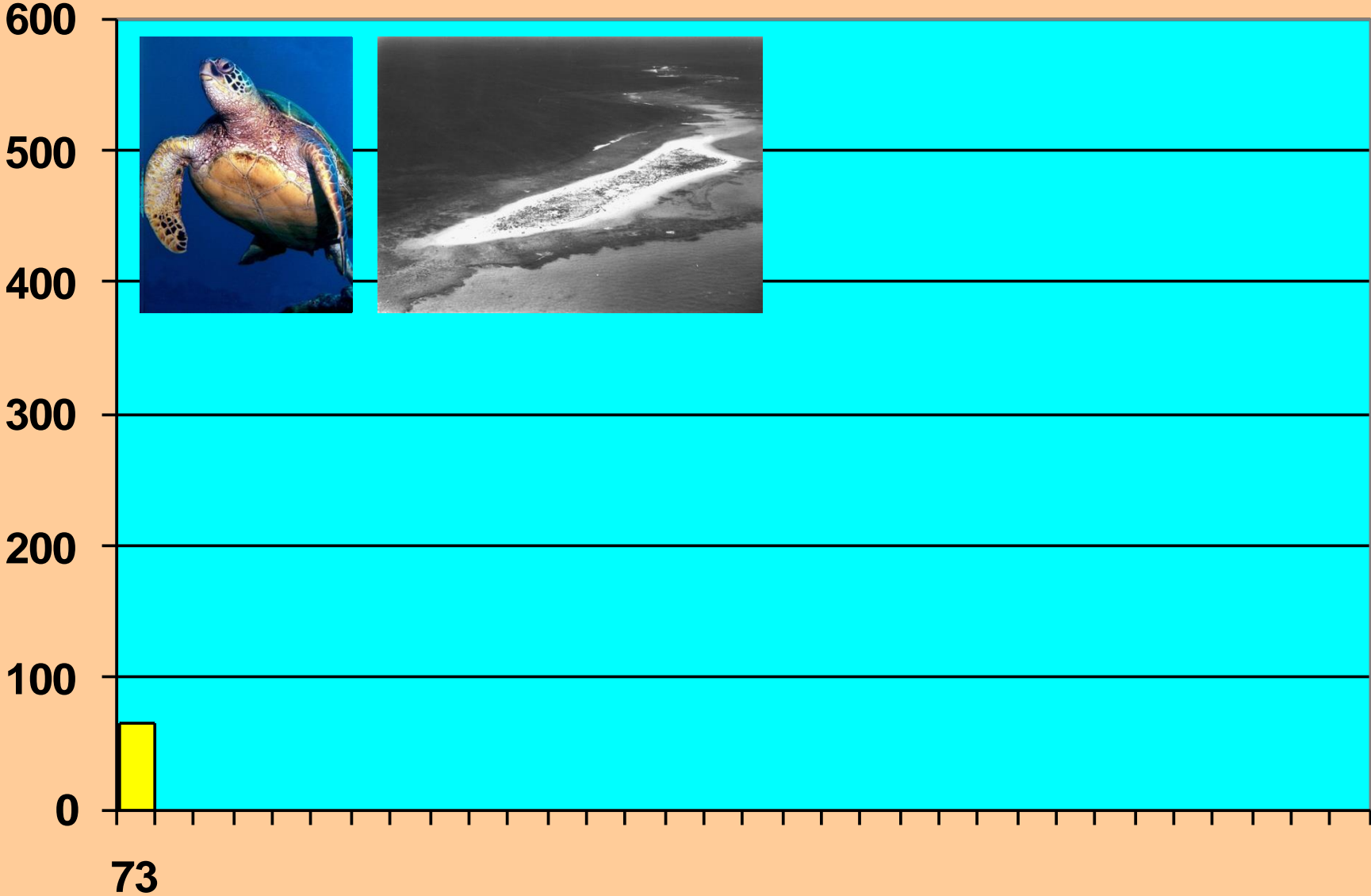
FRENCH
BRIGADE

EXCELLENCE IN LEISURE





GREEN TURTLES NESTING AT EAST ISLAND



WANTED!



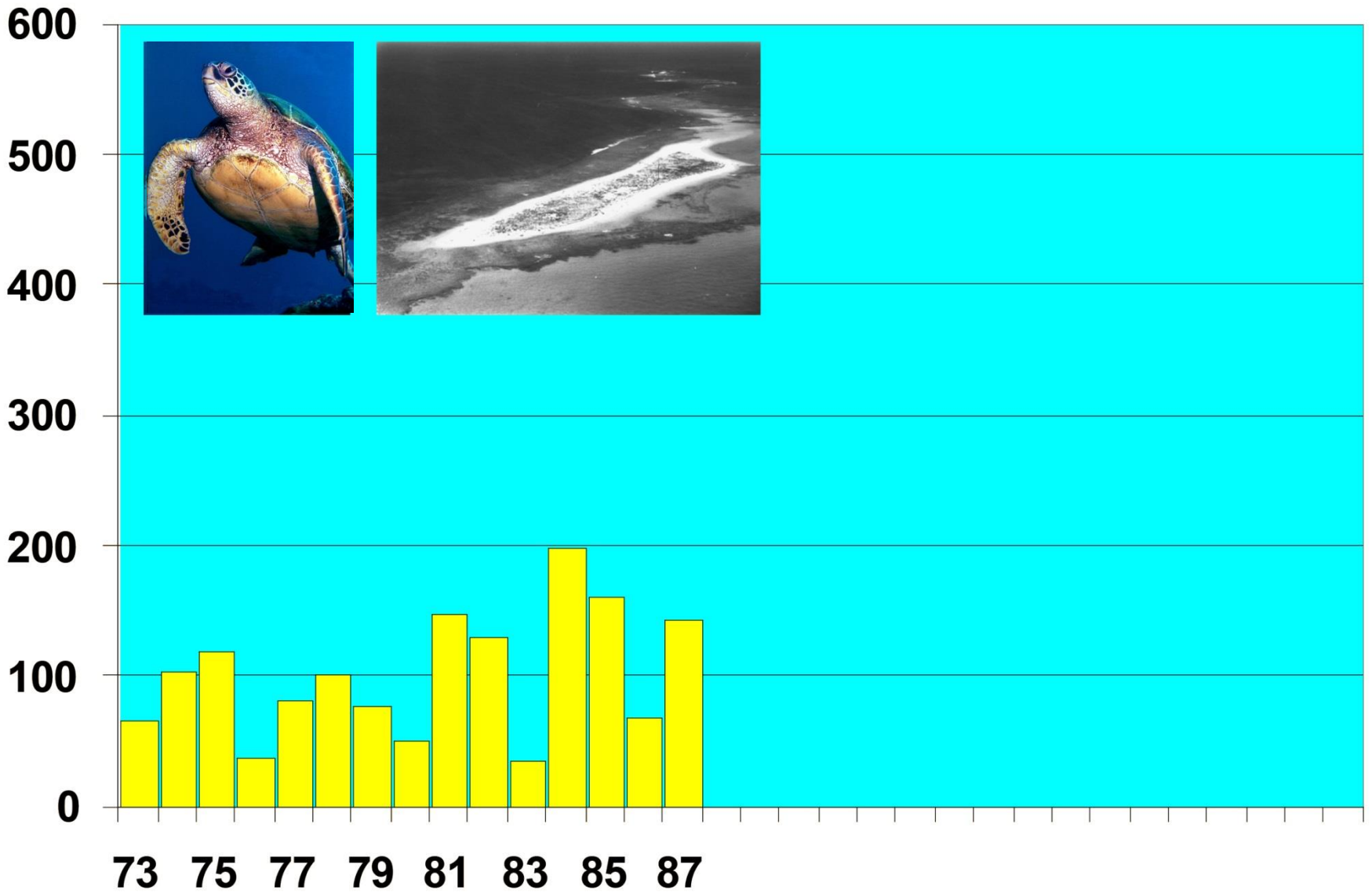
FOR
STEAKS, SOUPS
PURSES,
SHOES
ETC.
ETC.



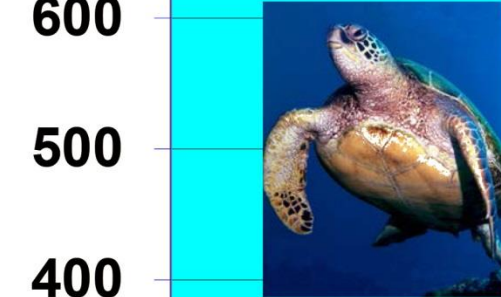
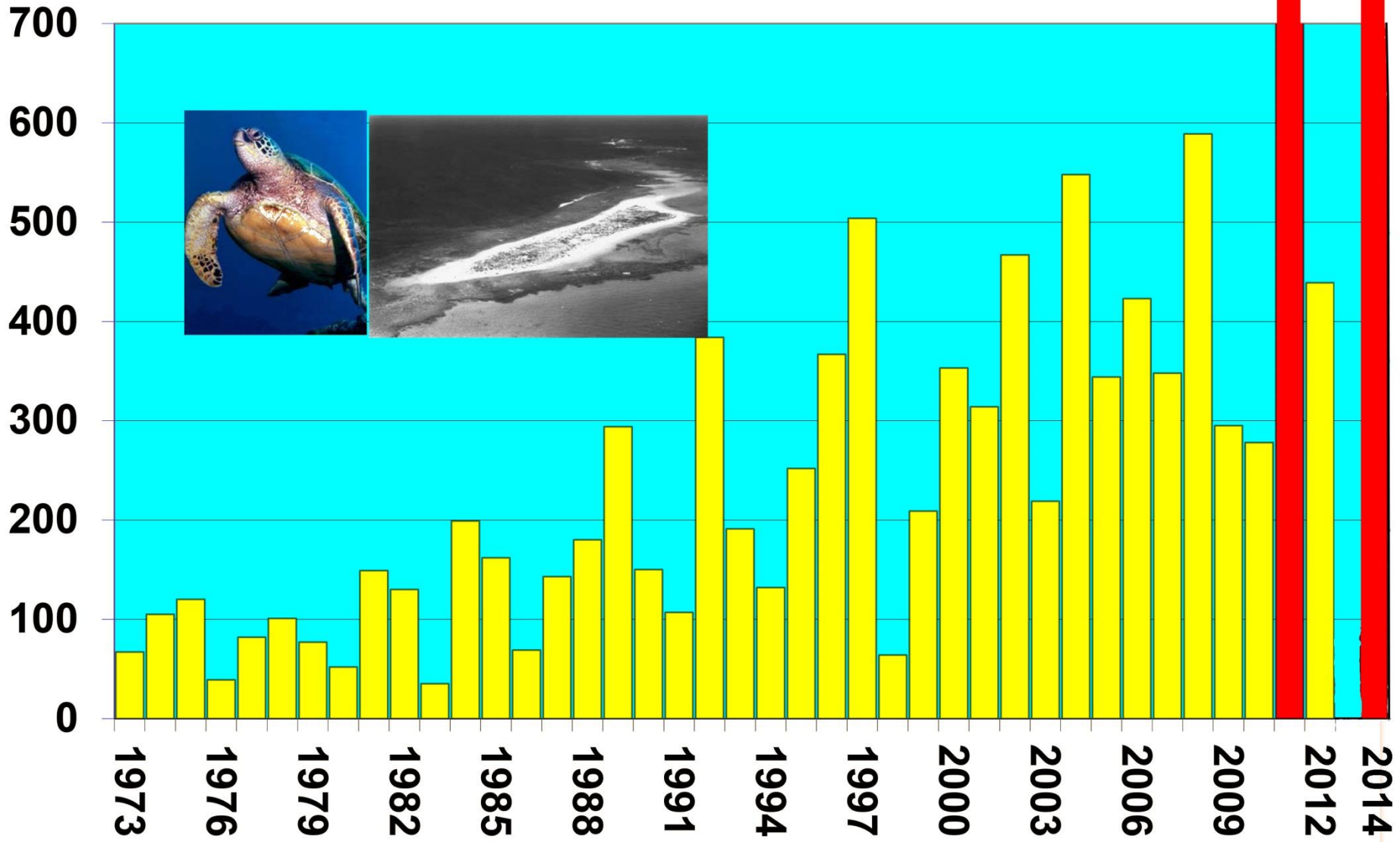
REPRODUCTION OF ORIGINAL BY THE HONOLULU ADVERTISER



GREEN TURTLES NESTING AT EAST ISLAND



GREEN TURTLES NESTING AT EAST ISLAND FRENCH FRIGATE SHOALS 1973 - 2014



Marine Turtle Research
Pacific Islands Fisheries Science Center
National Marine Fisheries Service

ANNUAL TREND FOR 40 SEASONS



Changing Behaviors



10 5 '99





















F R E E

Kauai Dive & Snorkel Map



SEASPORT DIVERS

Voted #1 on Kauai

Polpu (808) 742-9303 • Kapaa (808) 823-9222

Toll Free (800) 685-5889

www.seasportdivers.com



NAUI

DIVE KAUAI



A Kauai's Most
Progressive and Complete
SCUBA Center



Join our professional
dive team for the most
enjoyable vacation.

Professional Service

Swimming and SCUBA diving
for the first time up to
advanced divers

(808) 822-0452

822-8666 (222)

Toll Free (800) 826-3483

Fax (808) 823-9515

1038 Kuhio Highway

Kapaa, HI 96746

www.divekauai.com

MANA DIVERS



Sunny

Nature

Adventure

"BE OUR GUEST,
DISCOVER KAUAI'S BEST"

MANA DIVERS

808-335-0881

442 WOODS ROAD, BOX 7

PO BOX, KAUAI, HAWAII

PHONE 808-335-0881

WELDER, KAUAI, HAWAII, PETAH

TOURING KAUAI'S BEAUTIFUL

SOUTH SHORE - SUNNY POIPU

EAST SHORE - COCONUT COAST

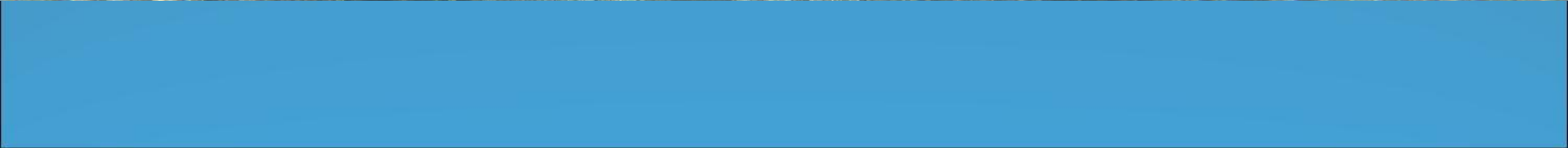
HISTORIC WEST SHORE & PRISTINE NORTH SHORE



2013 07 15



2013 07 15

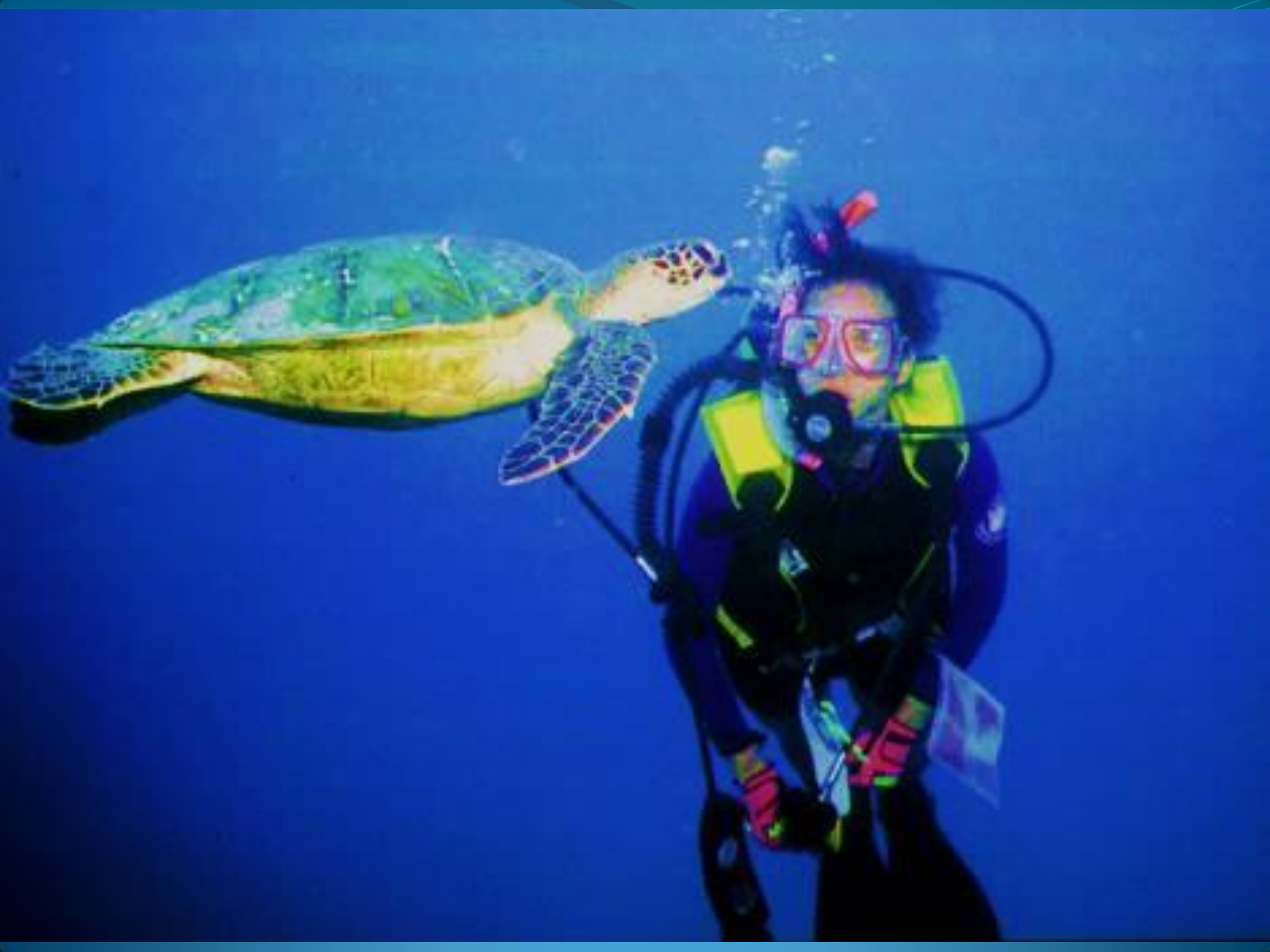




2013 07 15



Beauty Rest





© Masa Ushioda/SeaPics/Solent News







POLYNESIAN CANOE TURES

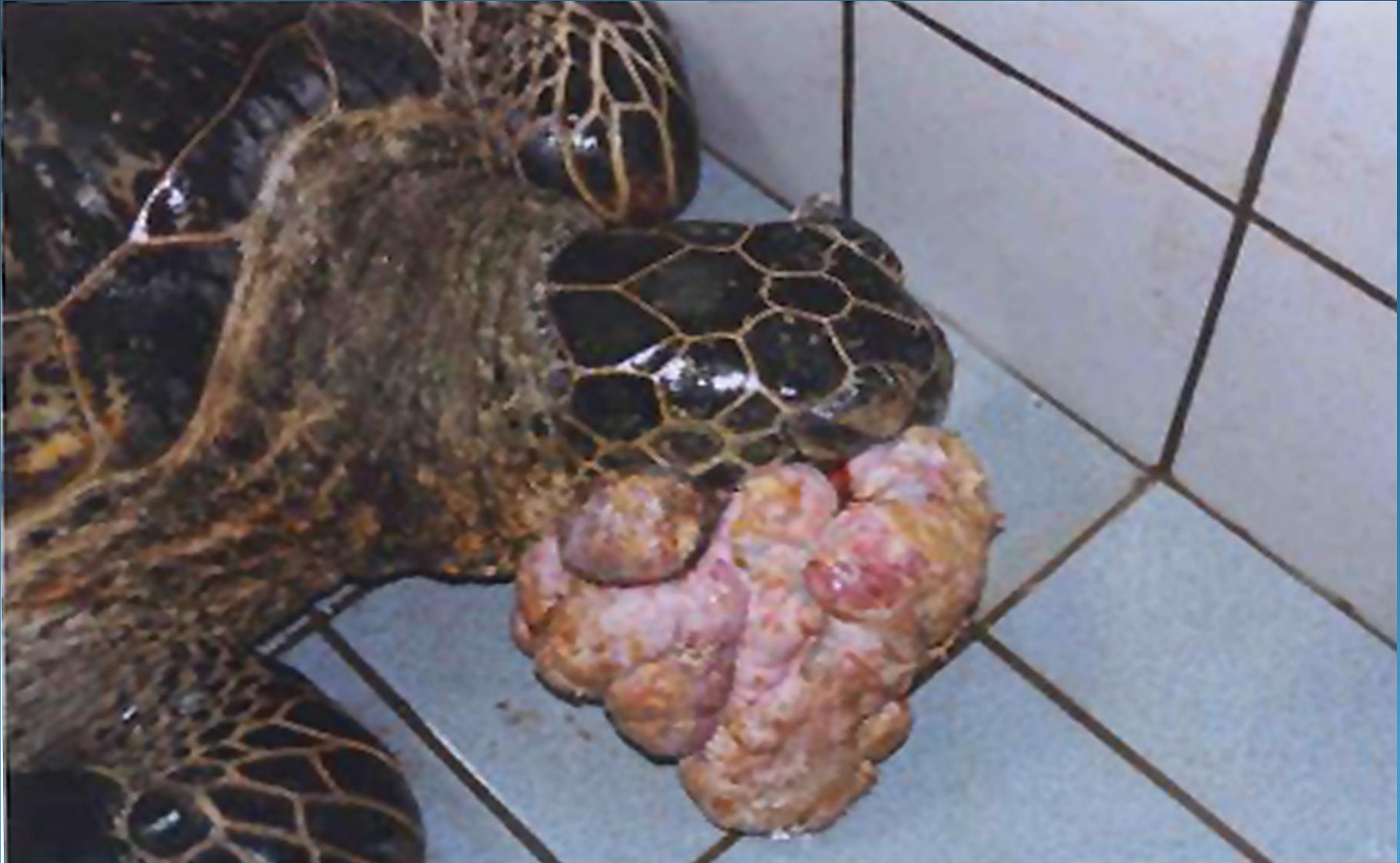
Pteroclatiella





Large tumor

大型の腫瘍





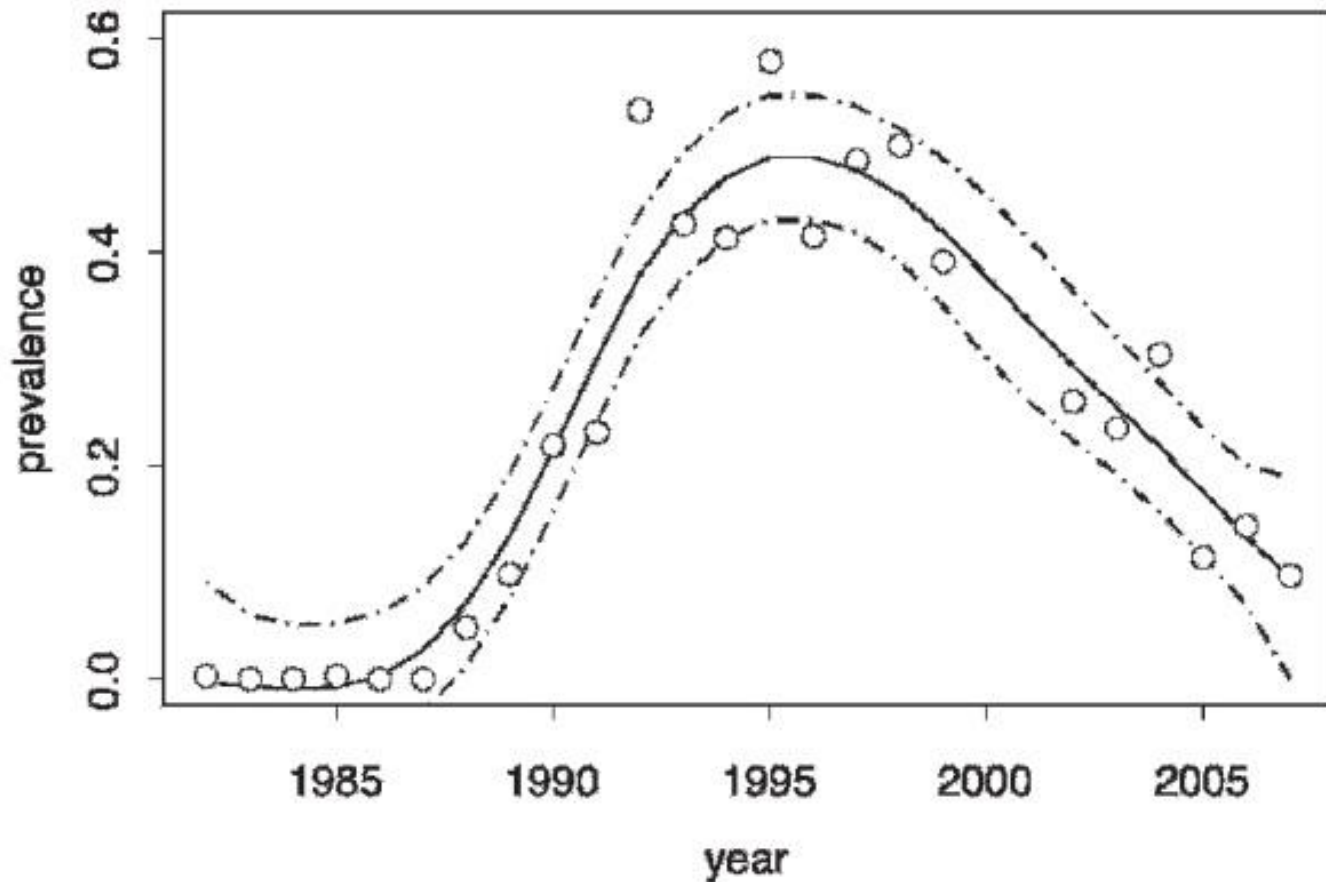


図2. 流行曲線の3段階

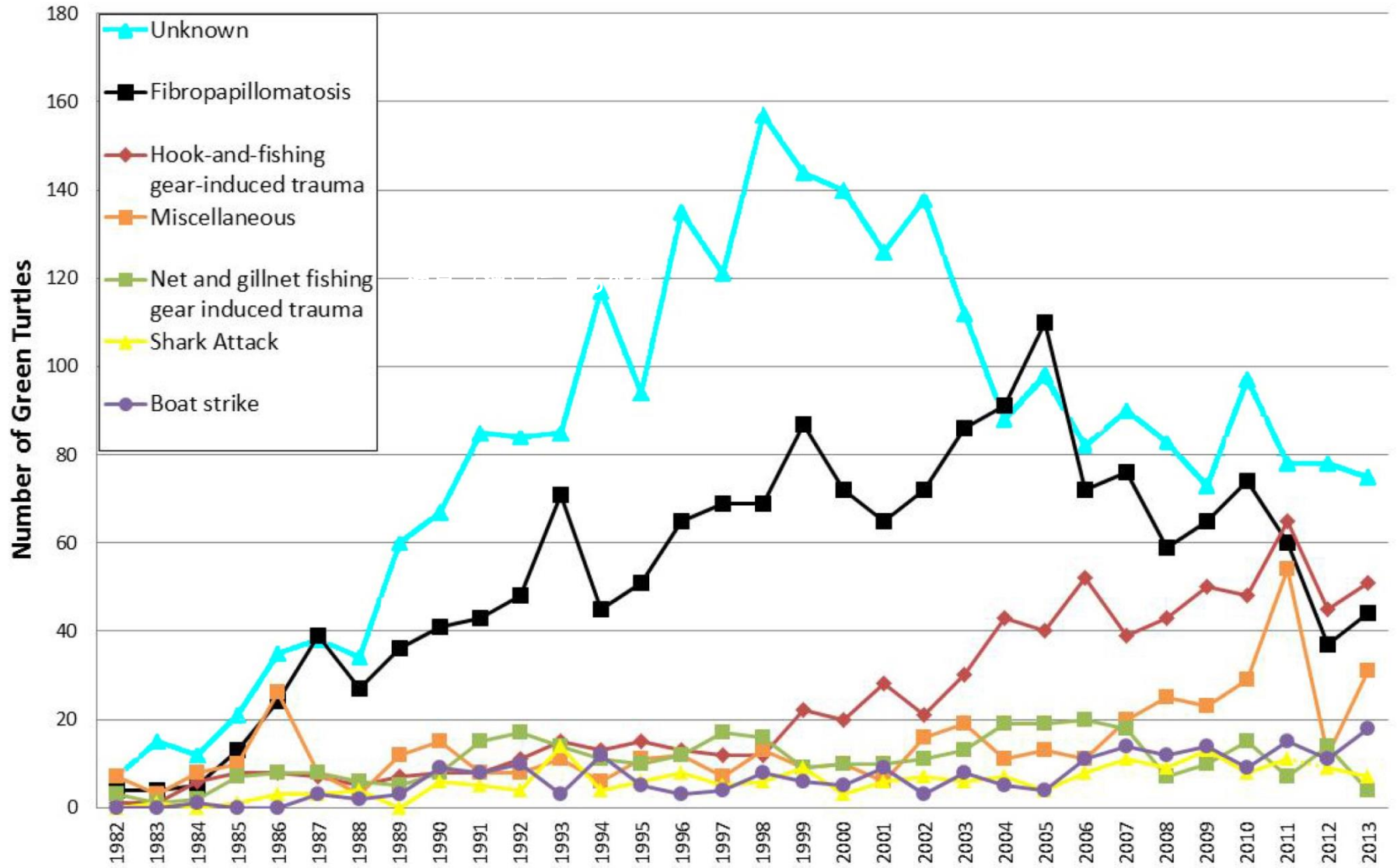
第一段階 (1988-1991) 急上昇期

第二段階 (1992-1998) ピーク期

第三段階 (1999-) 緩やかな下降期

Figure 5. Green turtle strandings from Main and Northwestern Hawaiian Islands by cause from 1982 through 2013.

1982-2013 全ハワイにおけるアオウミガメの漂着件数 (N=6346)





609

Limou

The Blue Turtle



By Kimo Armitage
Illustrated by Scott Kaneshiro

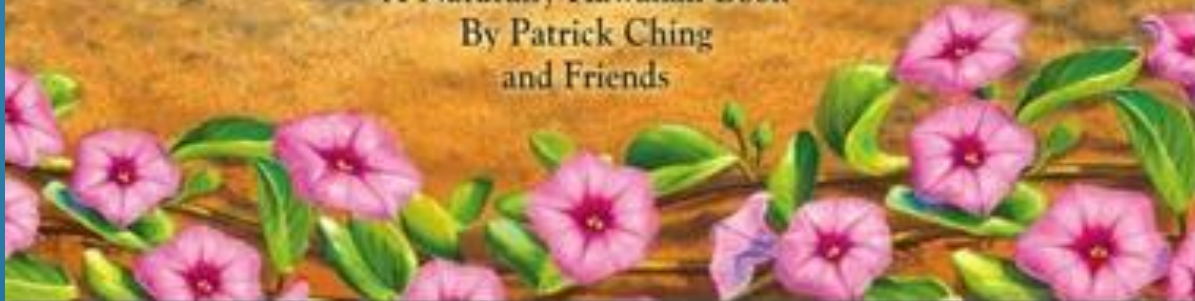

ISLAND HERITAGE

HONU *and* HINA

A Story of Coexistence



A Naturally Hawaiian Book
By Patrick Ching
and Friends





The coexistence of Honu and Hina is a story of the struggle for environmental justice among the people of a small Hawaiian island.

In the late nineteenth century, when most people on the island of Kauai had long left for the cities, the missionaries, doctors, and government men came to the island to open the plantation economy and build a new Hawaii.

The appearance of Honu on beach after Honu is that in the early 1970s, when the people leaving their small island, their island, would like to return to the mountains to live in a place as beautiful as their island.

But the young people will have to work hard to handle the issues of protection and conservation, with cultural issues. These three issues are handled with care. The book is a story of coexistence in the world.

with
Patrick Ching

Patrick Ching is an internationally known author and a member of the Board of Directors of the National Geographic Society. He has written many books on Hawaii, including the book *Honu and Hina: A Story of Coexistence*. He lives in Honolulu, Hawaii, and is a member of the Board of Directors of the National Geographic Society.



HONU and HINA A Story of Coexistence

HONU and HINA

A Story of Coexistence

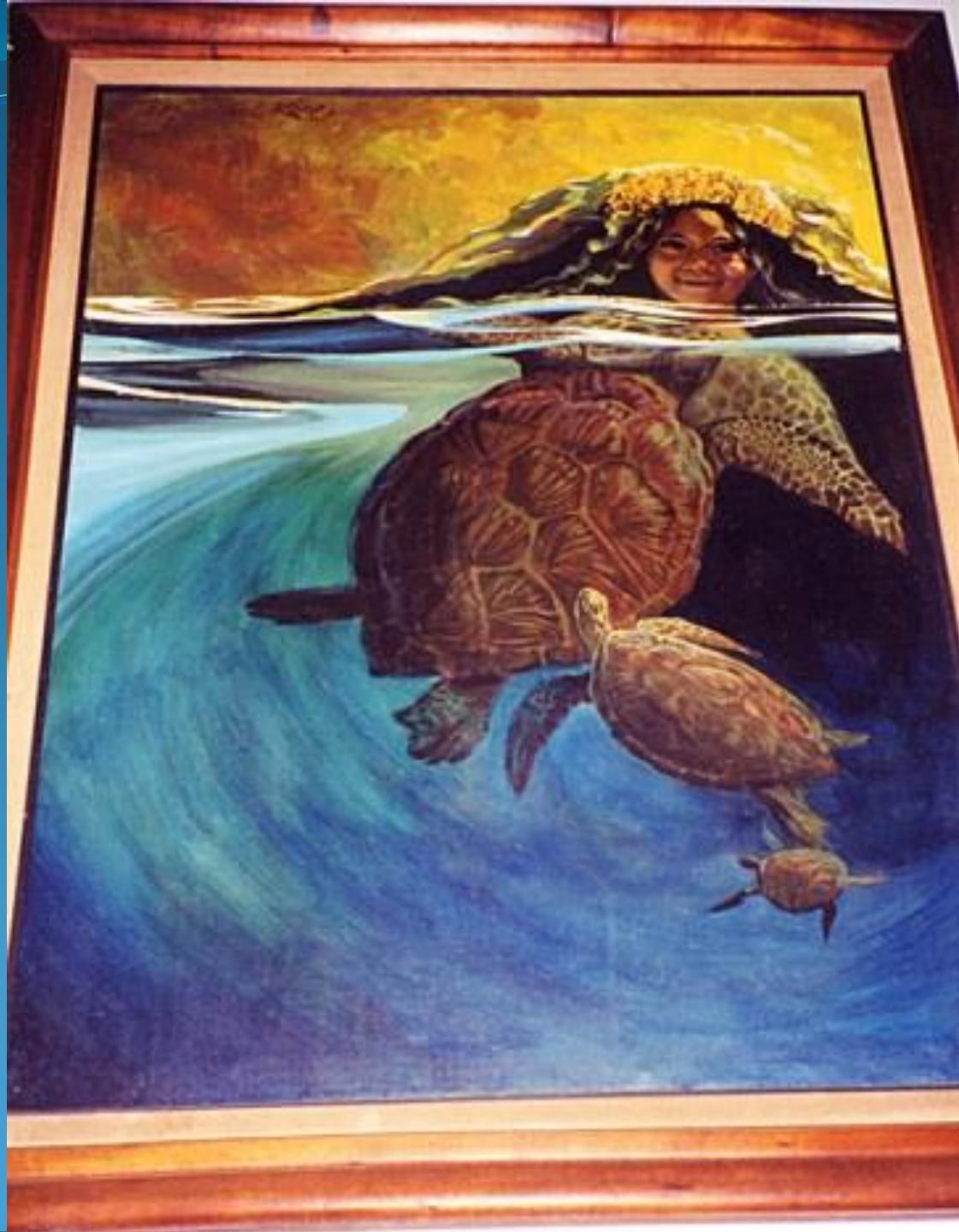


with A Naturally Hawaiian Book
By Patrick Ching
and Friends











Noel Morata Photography

















Tradition

傳統

Religion

宗教

Culture

文化



保全上の文化的配慮





廟宇

國泰

金峰銀樓承製

安







赫濯神靈傳此極

東甲北極殿
甲午年元宵節
平安大米龜
16.8888斤



公北社
蔡氏宗

公北社
蔡氏宗

公北社
蔡氏宗

公北社
蔡氏宗

公北社
蔡氏宗

公北社
蔡氏宗

公北社
蔡氏宗

公北社
蔡氏宗

公北社
蔡氏宗

風調雨順

公北社
蔡氏宗





一帆風順

大吉大利

多財多子

大吉大利

龍飛鳳舞

龍飛鳳舞

金玉滿堂





蕭江新田河頭

柯敬啟

西年瑞月吉

境安四
廠南
宮安保

白蓮聖母

白蓮聖母
靈水

境安四
廠南
宮安保

白蓮聖母













Domon Clay Crests





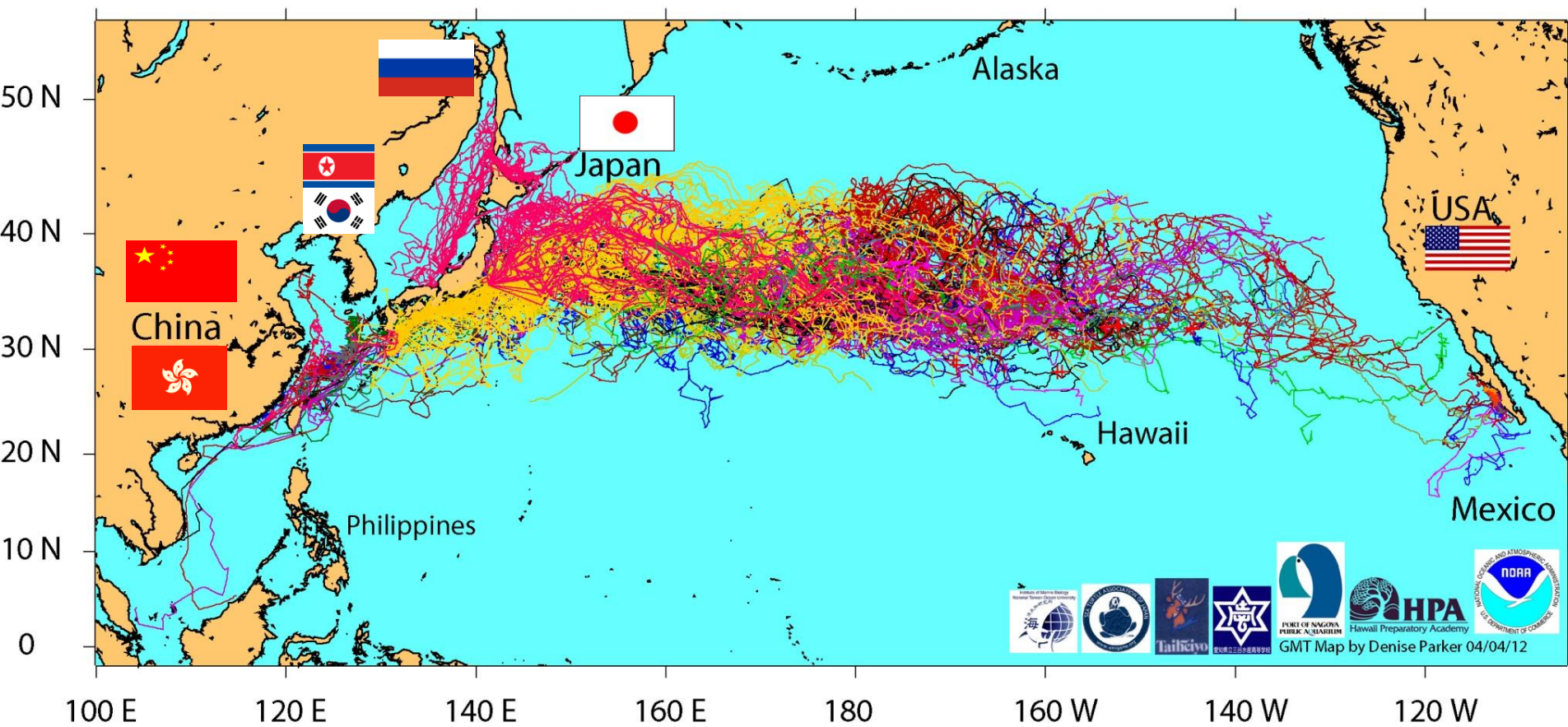
アカウミガメ

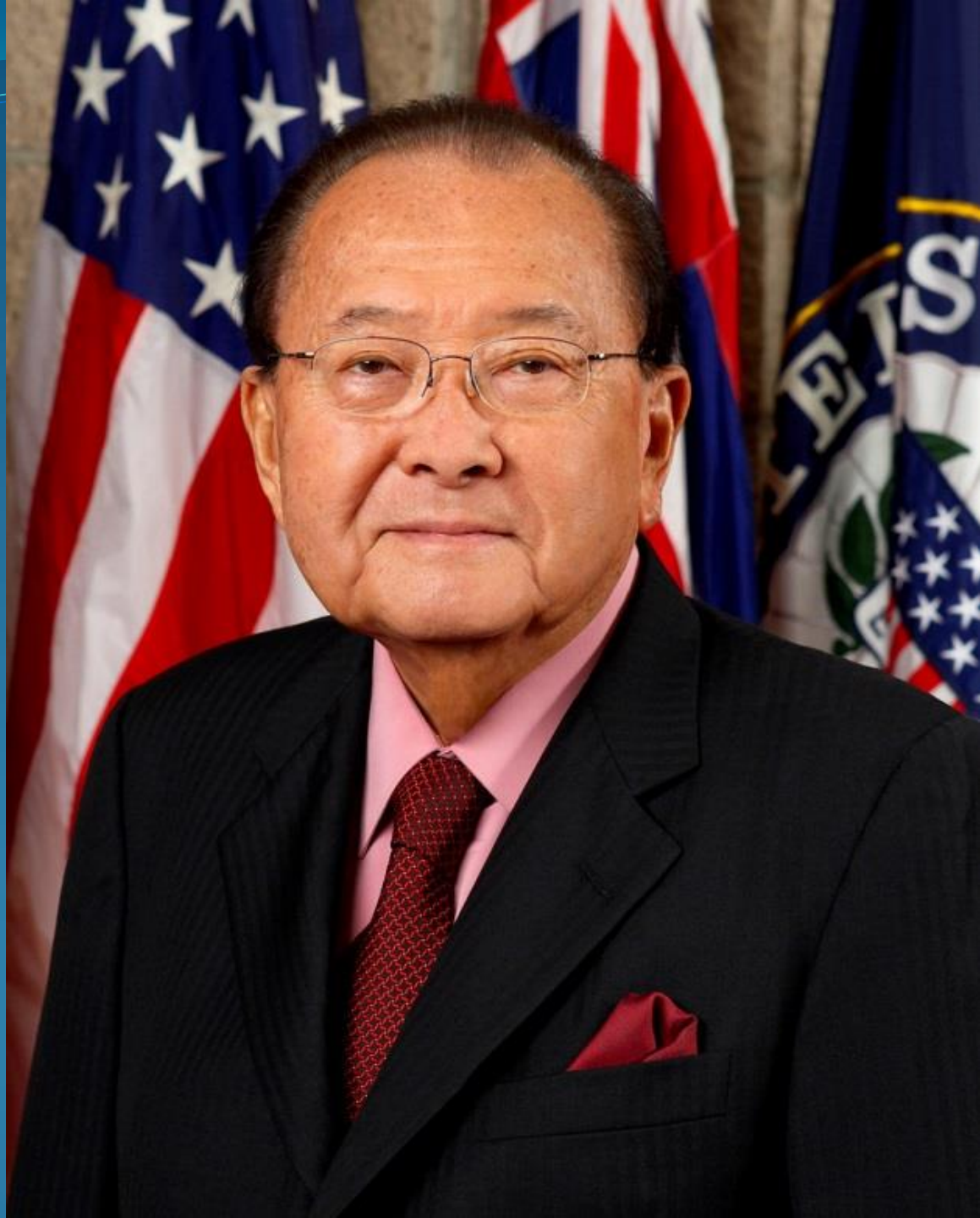


North Pacific Loggerhead

アカウミガメ (北太平洋個体群)

1997-2012 Satellite Tracking of Pelagic North Pacific Loggerheads

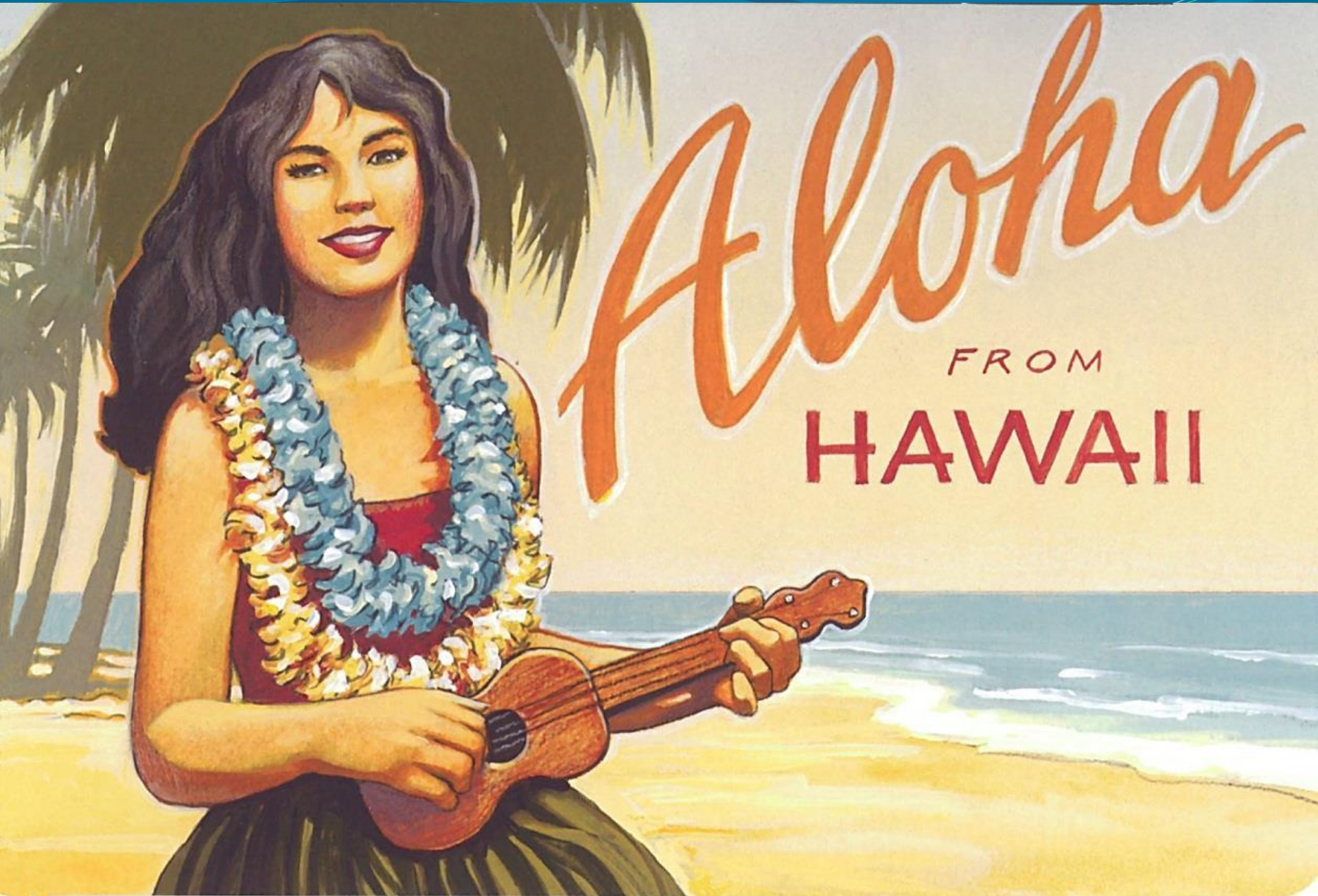






Of All The Things One Can Take
When Visiting a New Place
the Most Important is an
Open Spirit

初めての所を訪れた者に最も重要なのは
「開かれた心を持つ事」



Aloha

FROM

HAWAII