

A large sea turtle, likely a hawksbill, is shown resting on a sandy beach. The turtle's head and front flippers are visible, and it is facing towards the camera. The background is a clear, blue ocean.

# ***MARINE TURTLE STRANDINGS***

***MTRP***

***NOAA Fisheries***

***Cody Hooven***

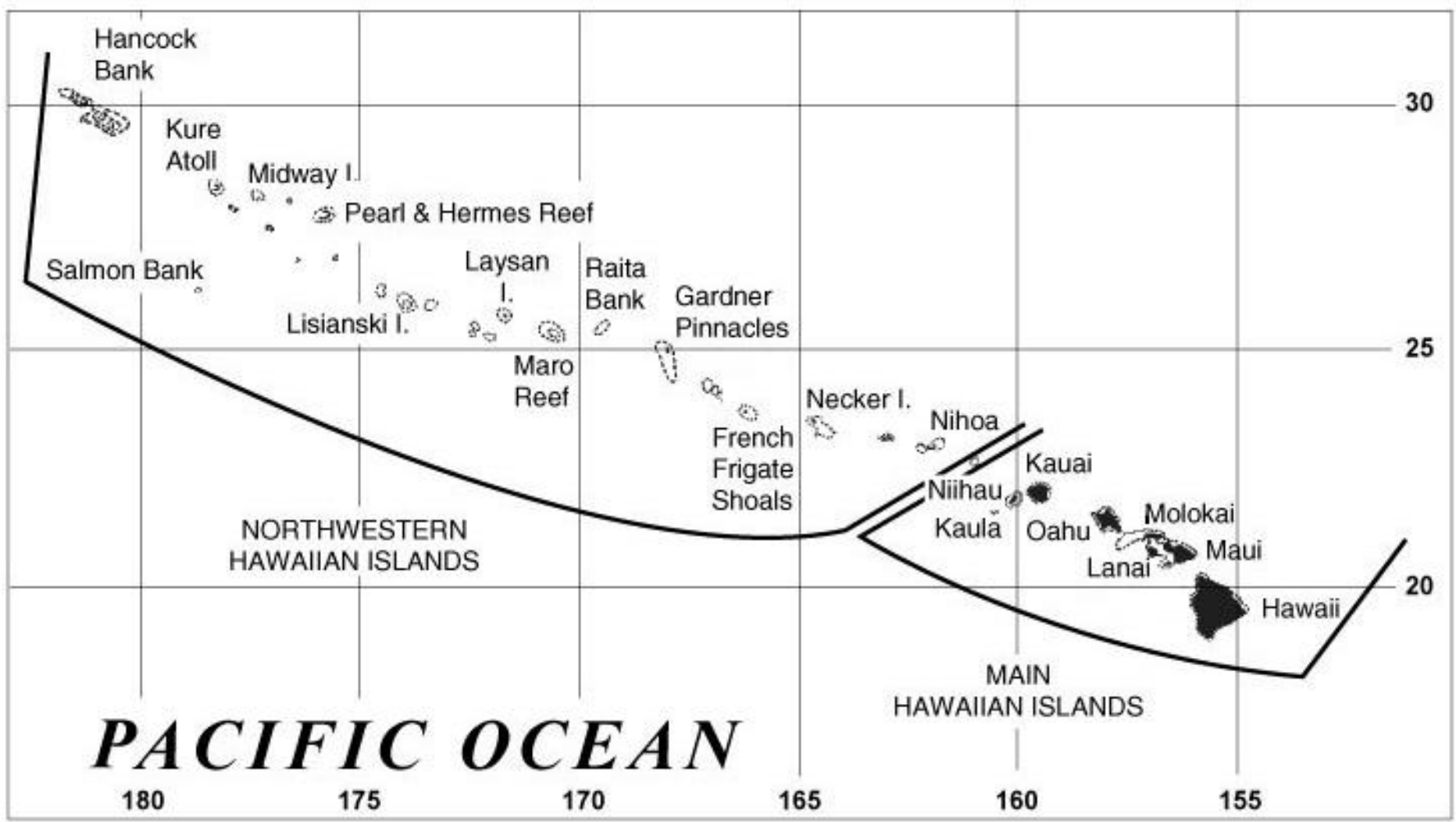
# GREEN *Honu*



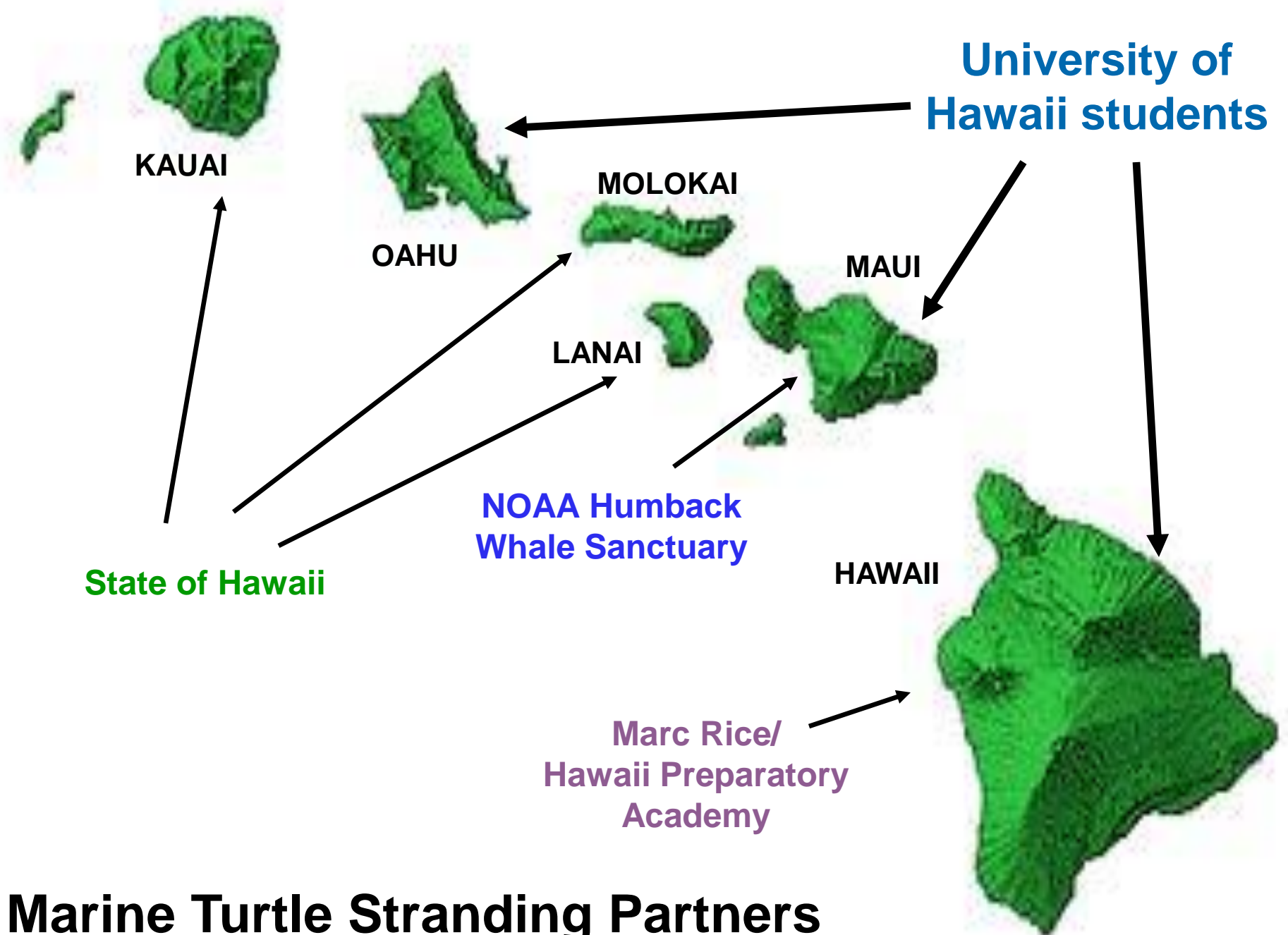
# HAWKSBILL

*Honu'ea*





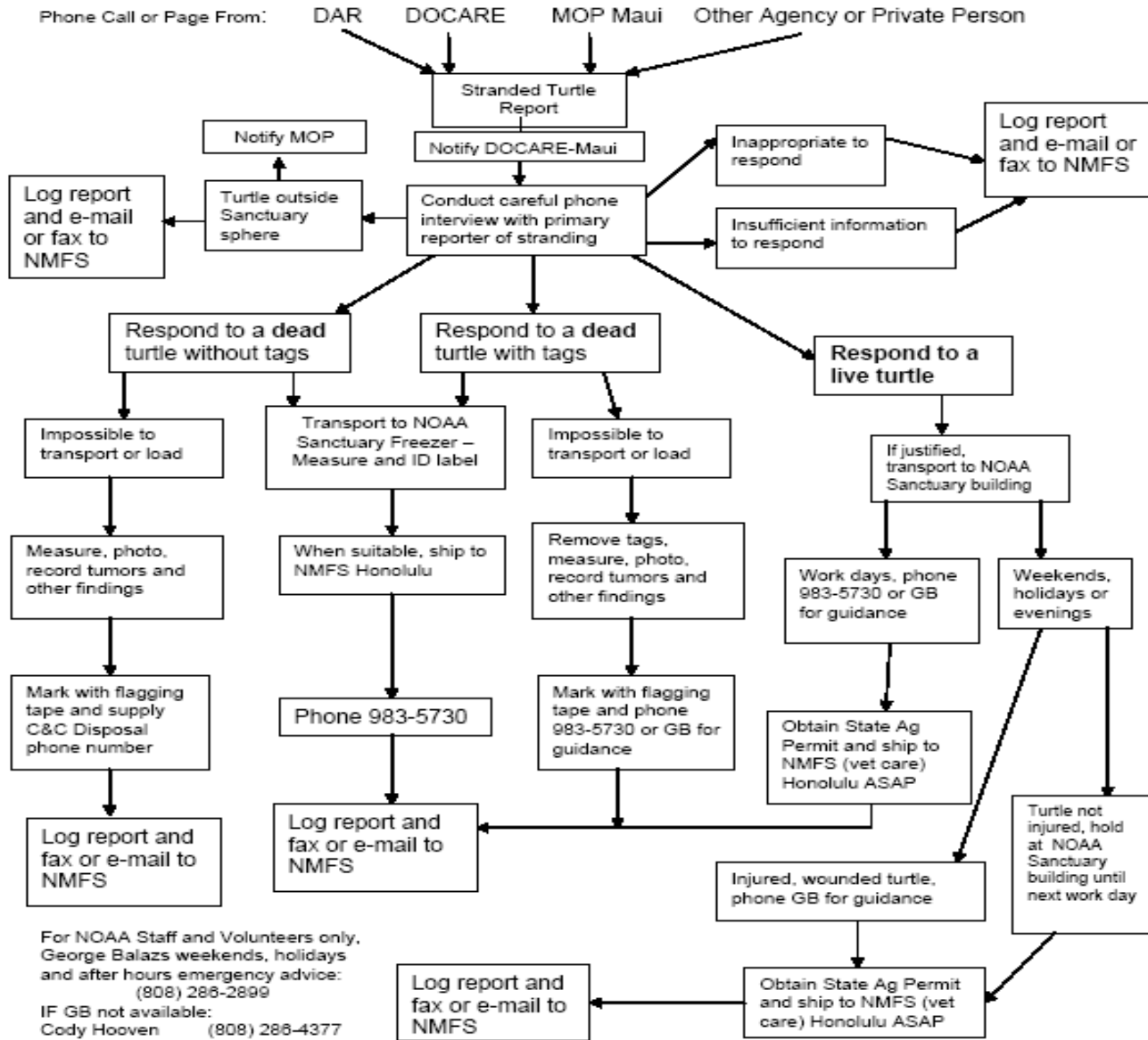
The Hawaiian Archipelago



# Marine Turtle Stranding Partners



**ISLAND OF MAUI – KIHEI AREA**  
**PROTOCOL FOR SEA TURTLE STRANDING REPORTS RECEIVED BY THE**  
**MAUI HIHWNMS NOAA SANCTUARY OFFICE**  
 (Outline of Steps for Response, Salvage and Rescue)



For NOAA Staff and Volunteers only,  
 George Balazs weekends, holidays  
 and after hours emergency advice:  
 (808) 286-2899  
 IF GB not available:  
 Cody Hooven (809) 286-4377  
 Shawn Murakawa (808) 286-4359

Note: Illegal activities involving sea turtles should be reported to DOCARE (984-8110) and/or NMFS Law Enforcement (808-541-2727 or 800-853-1984)

\* For Internal Use Only \*

Marine Turtle Research Program  
 PIFSC NOAA National Marine Fisheries Service  
 2570 Dole Street  
 Honolulu, HI 96822-2396  
 Ph: 983-5730  
 Fax: 983-2902

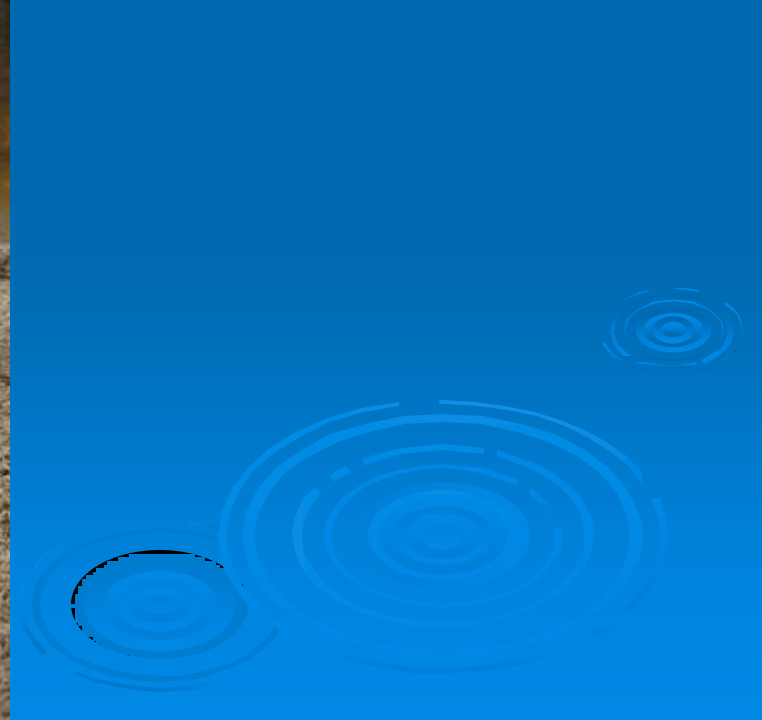
Revised  
 2/16/05

# Types/Causes of strandings in Hawaii





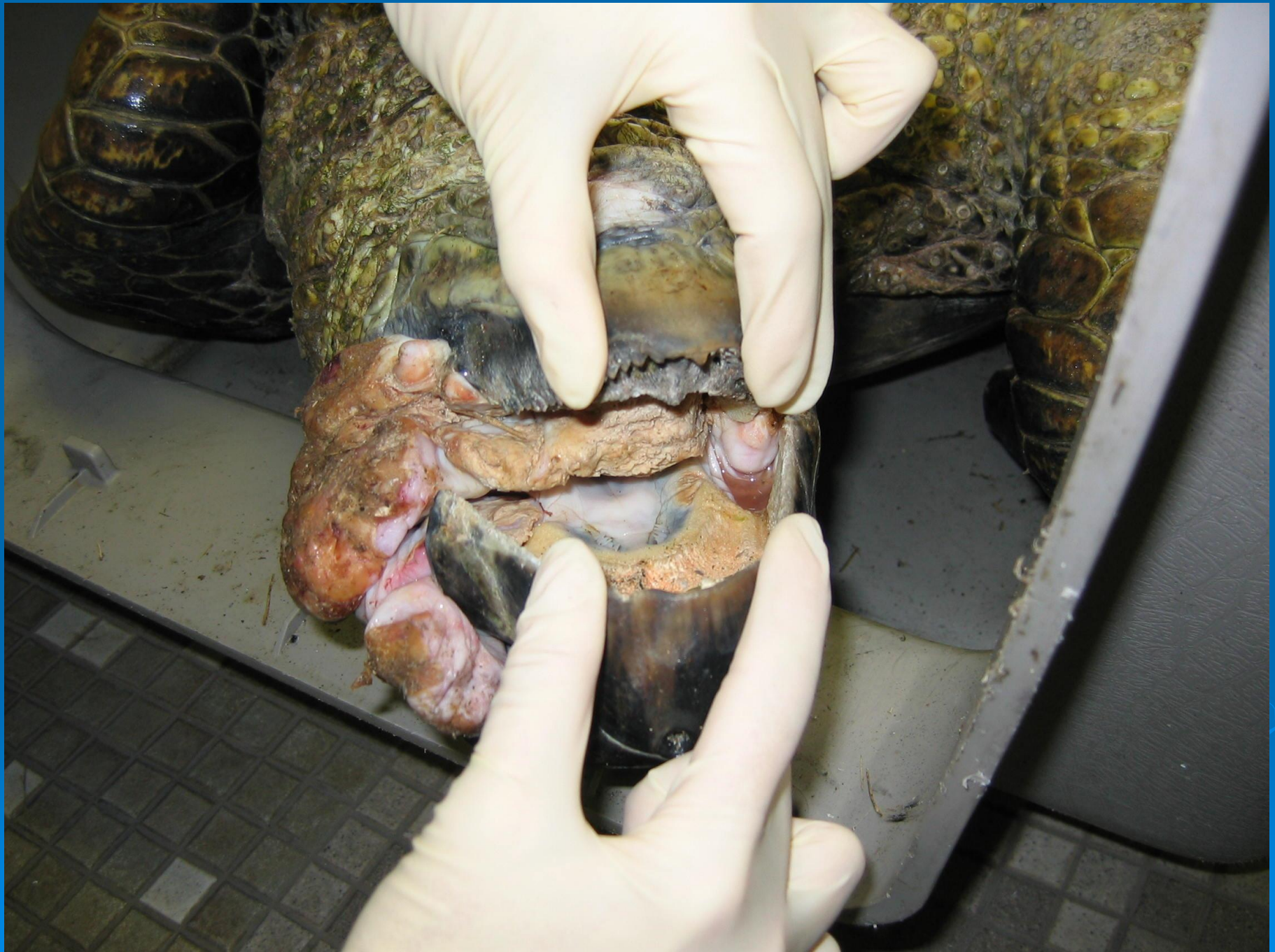
# Fibropapilloma (tumors)







5/22/05  
Kahala'u,  
Oahu



# Fish hooks







**Fishing line**

A blue-tinted photograph showing a turtle, likely a sea turtle, entangled in a fishing net. The turtle is positioned in the center of the frame, with its head and front flippers visible. The net is a complex, tangled mesh of lines that surrounds the turtle, illustrating the concept of net entanglement. The background is dark, making the blue-tinted net and turtle stand out.

**Net entanglement**





**Boat impact**



8/20/03 Alive  
Anaehoomalu Bay, HI



**Boat impact**



**Shark attack**

8/31/04  
Kapalua, Maui

# Other unknown or miscellaneous causes



A photograph showing a bird, possibly a tern, perched on a dark, vertical rock formation. The bird is facing left and appears to be stuck in a crack or crevice. The background features a rocky coastline with green algae and seaweed, and waves crashing against the shore. The sky is blue with some white clouds. The text "Stuck in crack" is overlaid in yellow at the bottom center. A date stamp "1/23/02" is visible in the bottom right corner.

**Stuck in crack**

1/23/02





3/11/06 Found in net  
Kaneohe Bay (KMCBH-Kahekili Leap), Oahu







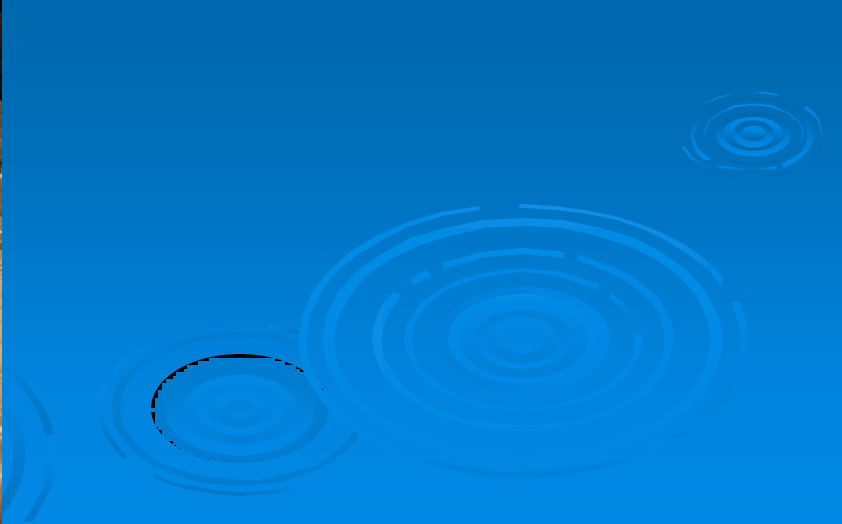
**Retrieval of stranded turtles**



03.07.2006



03.07.2006







# Data obtained from strandings:

Cause of mortality or injury

Distribution and abundance of population

Sex ratio

Disease prevalence per location or area



# Necropsy of stranded turtles (found dead or euthanized)



## **Samples collected:**

Forestomach contents for diet analysis

Humeri bones for aging study

Skin/blood for DNA analysis

Tissue samples for FP virus studies

Various others (leeches, parasites, etc.)





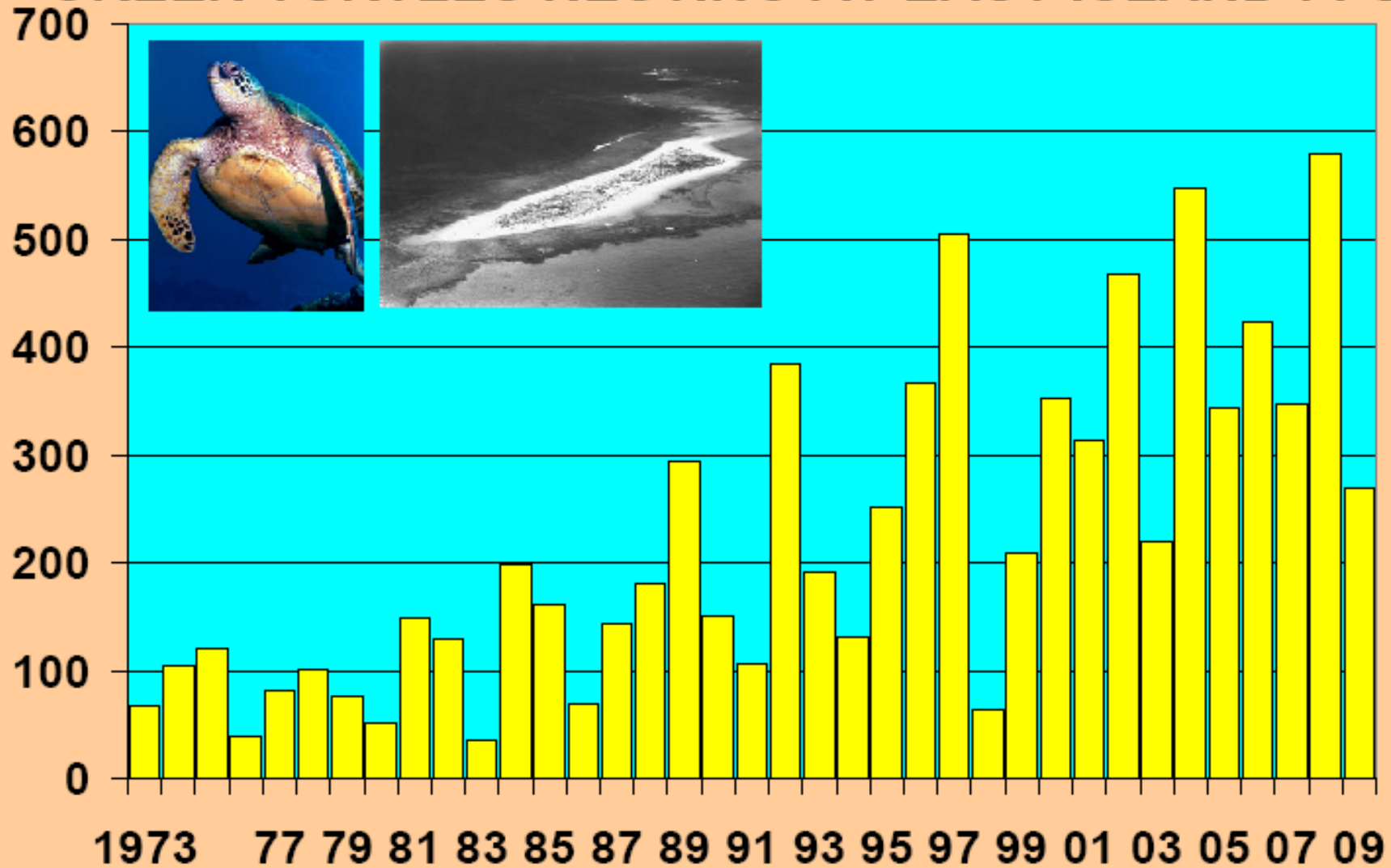
## CAUSE OF STRANDING DATABASE FOR MARINE TURTLE STRANDINGS IN THE HAWAIIAN ISLANDS, 1982 - MAR 2005, (N=4218)

Marine Turtle Research Program  
 NOAA, National Marine Fisheries Service  
 Pacific Islands Fisheries Science Center  
 2570 Dole Street  
 Honolulu, Hawaii 96822-2396

TURTLEID	YEAR	MONTH	SEX	SCL (mm)	WT (g)	ISLAND	LOCATION	CAUSE OF STRANDING	TS	SP	UNK, A, D, D-EU	NEC
	1982	February	U	660*	-	OAHU-S	Pearl Harbor	Fibropapillomatosis	3	CM	A	
	1982	February	U	-	-	OAHU-NE	Lanikai	Fish hook	0	US	A	
	1982	February	U	-	-	OAHU-NE	Kailua Beach Park	Unknown	UNK	US	D	NN
	1982	March	U	-	-	KAUA	Hanapepe	Unknown	0	US	A	
	1982	March	F	C- 1370	-	OAHU-NE	Waimanalo Bay State Rec. Area	Shark attack	0	DC	D-EU	MTRP
2646	1982	March	U	450	-	KURE	Green Island	Trauma	0	CM	D	MTRP
	1982	April	U	413	-	OAHU-NW	Sunset Beach	Spear	0	CM	D	MTRP
	1982	April	U	C- 575	-	OAHU-NW	Mokuleia (Dillingham Airfield)	Spear	0	CM	D	MTRP
	1982	April	U	430	-	LISI	Lisianski Island	Net entanglement	0	CM	A	
	1982	April	M	-	-	FREN	French Frigate Shoals	Trawl net entanglement	0	CM	D	NN
4956	1982	May	U	425	-	OAHU-NE	Kailua	Trauma	0	CM	A	
	1982	May	F	385	-	MIDW	Sand Island	Net entanglement	0	CM	D	MTRP
	1982	May	U	C- 448	-	MIDW	Sand Island	Unknown	0	CM	D	MTRP
	1982	June	U	C- 435	-	OAHU-NEK	Kaneohe Bay	Unknown	0	CM	D	MTRP
	1982	June	U	910	-	OAHU-NE	Kailua Beach Park	Unknown	0	CM	D	NN
	1982	July	U	C- 580	-	OAHU-NE	Kailua Beach Park	Unknown	Y-UNK	CM	D	NN
	1982	July	U	336	-	OAHU-NE	Lanikai	Spear	0	CM	D	MTRP
	1982	July	U	750*	-	OAHU-NEK	Kaneohe Bay (Coconut Island)	Unknown	UNK	CM	D	MTRP
4954	1982	July	U	384	-	OAHU	-	Trawl net entanglement	0	LO	A	
	1982	August	U	350	-	OAHU	-	Trawl net entanglement	0	US	D	NN
	1982	November	U	C- 910	-	OAHU-SW	Kahe Point	Spear	0	CM	D	NN
	1982	December	F	-	682000*	HAWA	Kailua-Kona (OTEC Buoy)	Parachute anchor entanglement	0	DC	D	NN
	1982	December	U	485	-	OAHU-NEK	Kaneohe Bay	Fibropapillomatosis	3	CM	D	MTRP
	1982	December	U	545	-	OAHU-S	Ewa Beach	FP/Net entanglement	2	CM	D	MTRP
6436	1982	December	M	C- 946	-	KAUA	Wailua Golf Course Beach	Fibropapillomatosis	2	CM	A	
	1983	January	U	-	-	OAHU-S	Waikiki	Unknown	Y-UNK	US	D	NN
	1983	January	U	-	-	KAUA	Poipu	Fibropapillomatosis	3	CM	A	
	1983	February	F	-	-	OAHU-SW	Mali Beach	Unknown	UNK	CM	A	
	1983	February	U	-	-	OAHU-NEK	Kaneohe Bay	Spear	0	CM	D	MTRP
	1983	February	U	432	-	OAHU-NE	Kailua	Kite string entanglement	0	CM	D	MTRP
	1983	February	U	-	-	OAHU-NE	Kailua Beach Park	Unknown	0	CM	D	NN
	1983	February	U	-	18144*	OAHU-NE	Kailua	Unknown	Y-UNK	CM	D	NN



# GREEN TURTLES NESTING AT EAST ISLAND FFS



## ANNUAL TREND FOR 37 SEASONS

