

# Satellite tracking of a loggerhead and a green turtle nesting individual in Amami-oshima

Katsuki Oki, Toshimitsu Arata, Connie Ka-yan Ng,  
Denise Parker and George Balazs

Amami Marinelife Recerch Groupe, Doren campsite,  
University of Hong Kong, JIMAR, NOAA



お騒がせしています

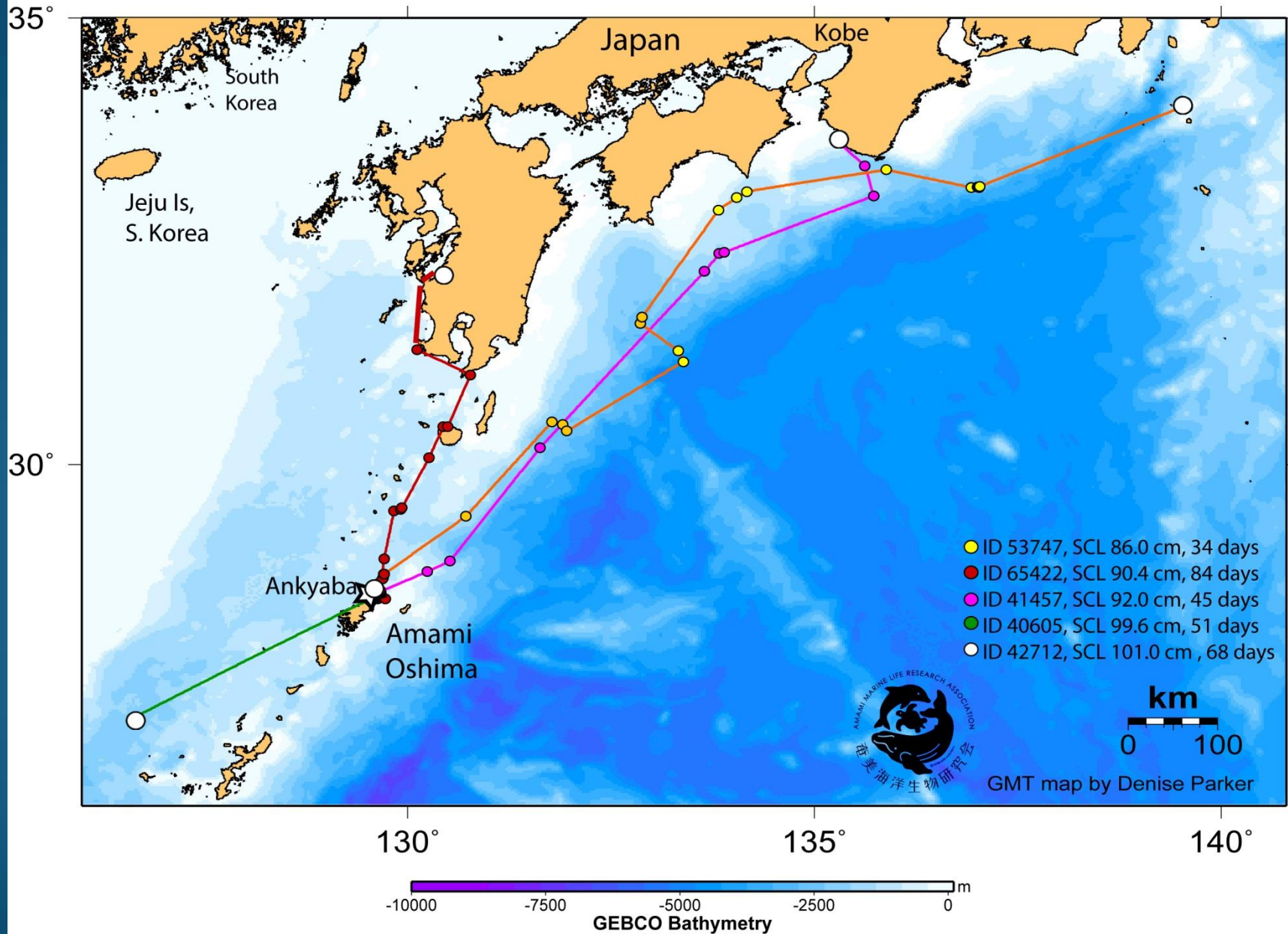
Japanese Sea Turtle Symposium  
in AMAMIOSHIMA



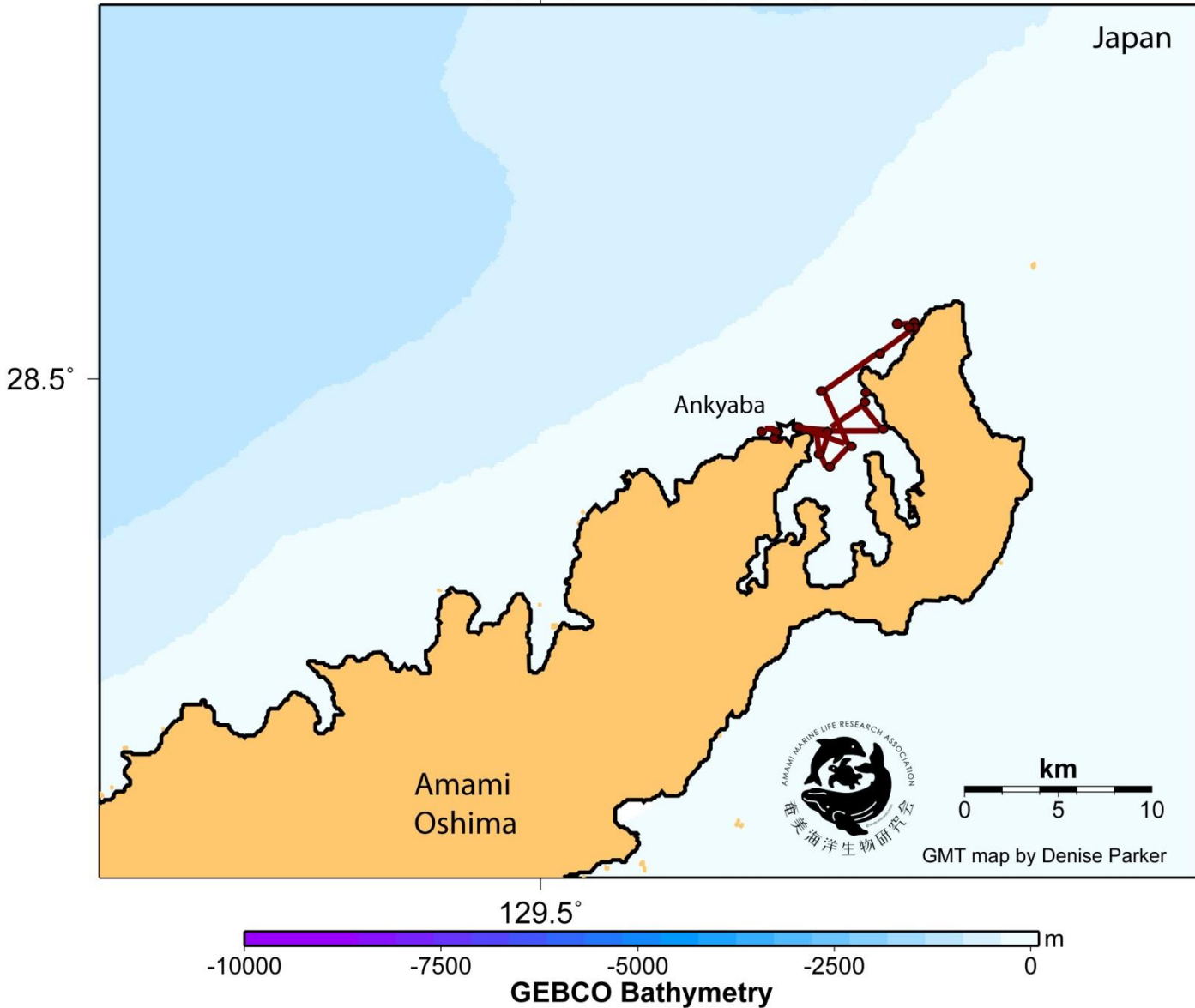




Update as of 29 September 2015:  
2015 movement of five post-nesting green turtles  
Released from Ankyaba Beach, Amami Island, Japan  
TAM-2639 transmitters Duty cycle: 6 hr on/24 hr off



FINAL MAP:  
2015 movement for post-nesting green turtle ID 42712  
Released for Ankyaba Beach, Amami Island, Japan on 21 June 2015  
TAM - 2639    SCL: 101.0 cm    Duty cycle: 6 hr on/24 hr off  
Days transmitting: 68 days



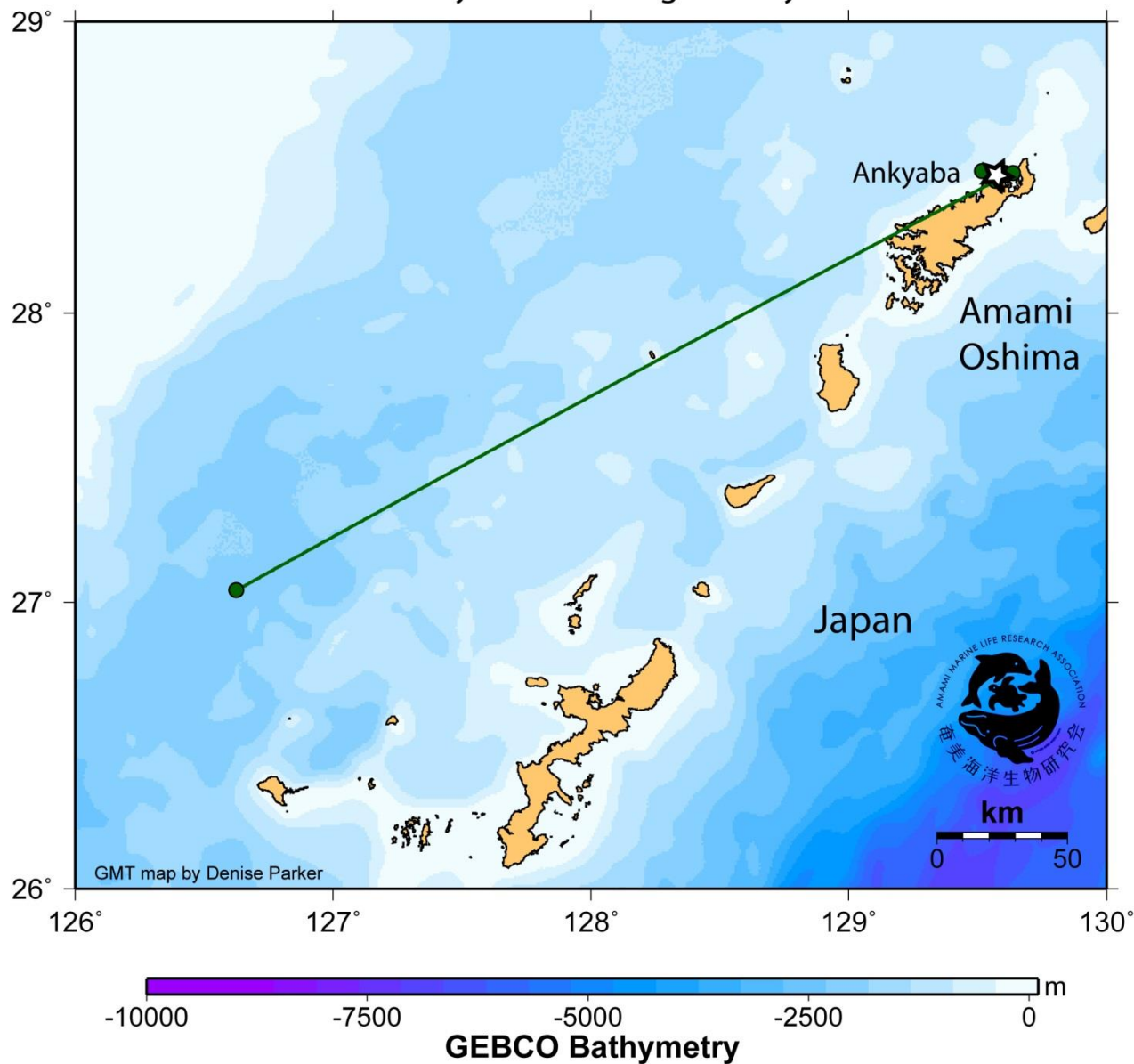
FINAL MAP:

2015 movement for post-nesting green turtle ID 40605

Released for Ankyaba Beach, Amami Island, Japan on 8 July 2015

TAM - 2639 SCL: 99.6 cm Duty cycle: 6 hr on/24 hr off

Days transmitting: 51 days





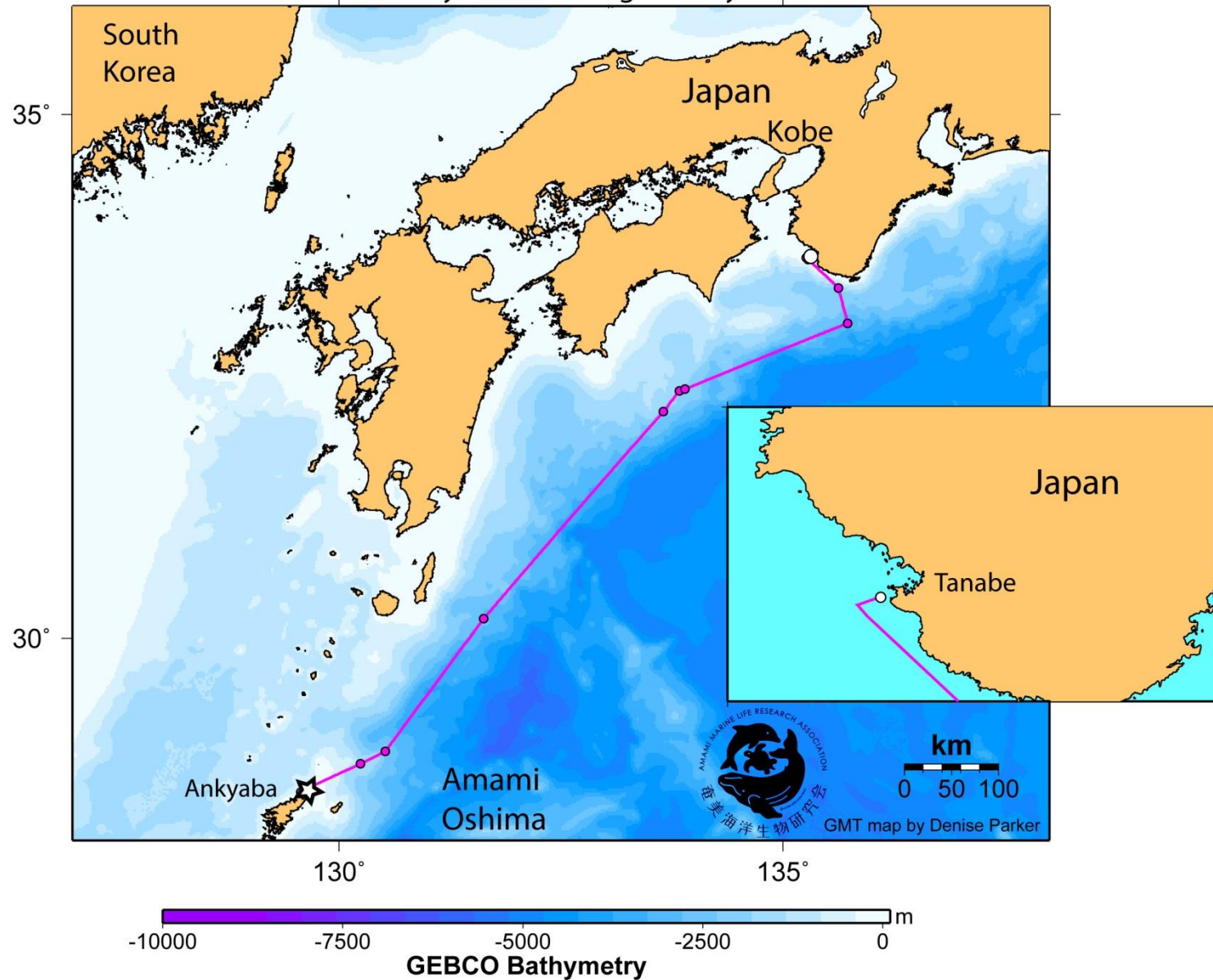
FINAL MAP:

2015 movement for post-nesting green turtle ID 41457

Released for Ankyaba Beach, Amami Island, Japan on 17 July 2015

TAM - 2639    SCL: 92.0 cm    Duty cycle: 6 hr on/24 hr off

Days transmitting: 45 days



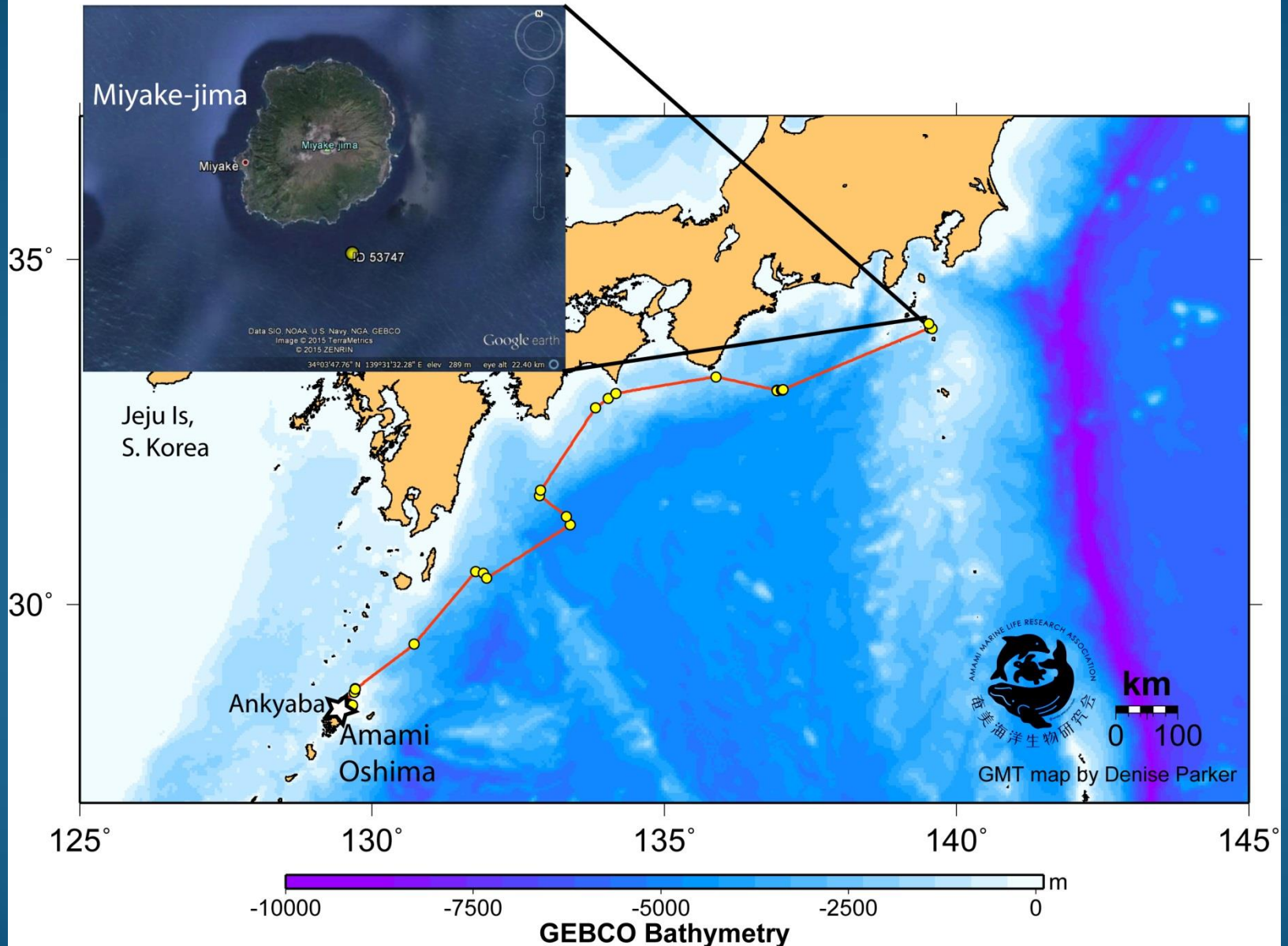
FINAL MAP:

2015 movement for post-nesting green turtle, ID 53747

Released for Ankyaba Beach, Amami Island, Japan

TAM - 2639 Duty cycle: 6 hr on/24 hr off SCL: 86.0 cm

Last position: 31 July 2015 Days transmitting: 34 days



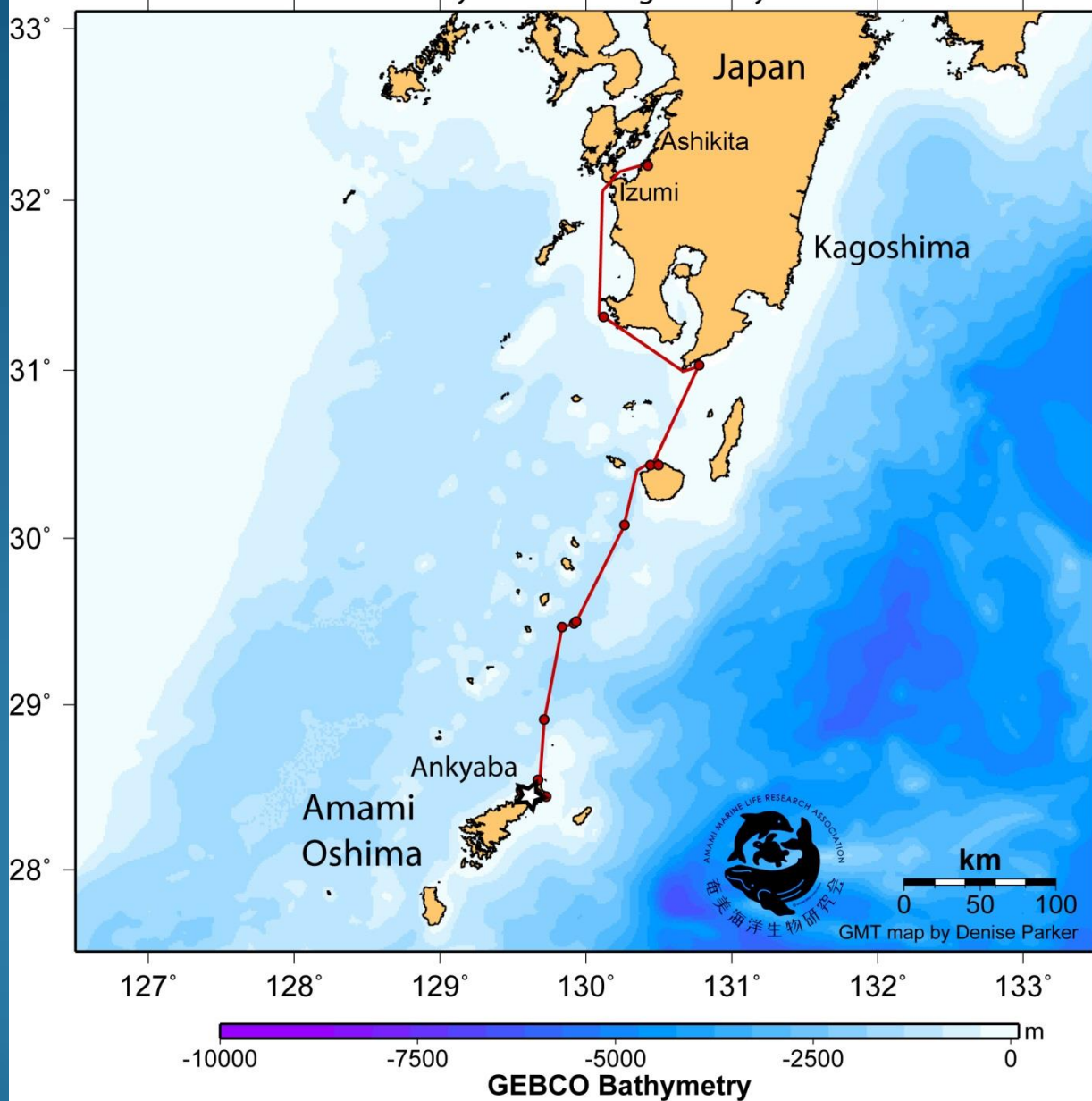
Update as of 29 September 2015:

2015 movement for post-nesting green turtle ID 65422

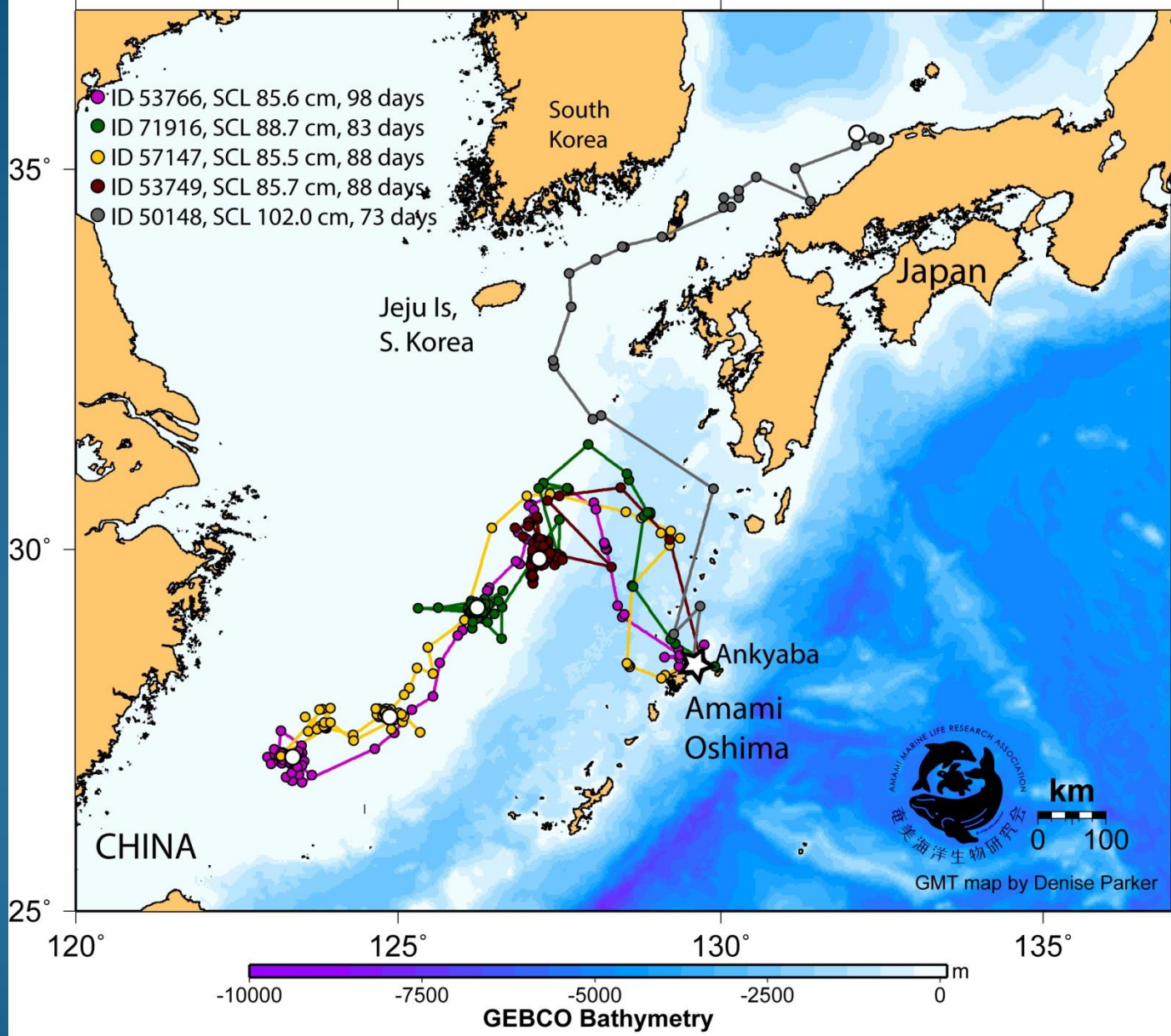
Released for Ankyaba Beach, Amami Island, Japan on 8 July 2015

TAM - 2639 SCL: 90.4 cm Duty cycle: 6 hr on/24 hr off

Days transmitting: 84 days



Update as of 29 September 2015:  
2015 movement of four post-nesting loggerhead turtles  
Released from Ankyaba Beach, Amami Island, Japan  
TAM-2639 transmitters Duty cycle: 6 hr on/24 hr off



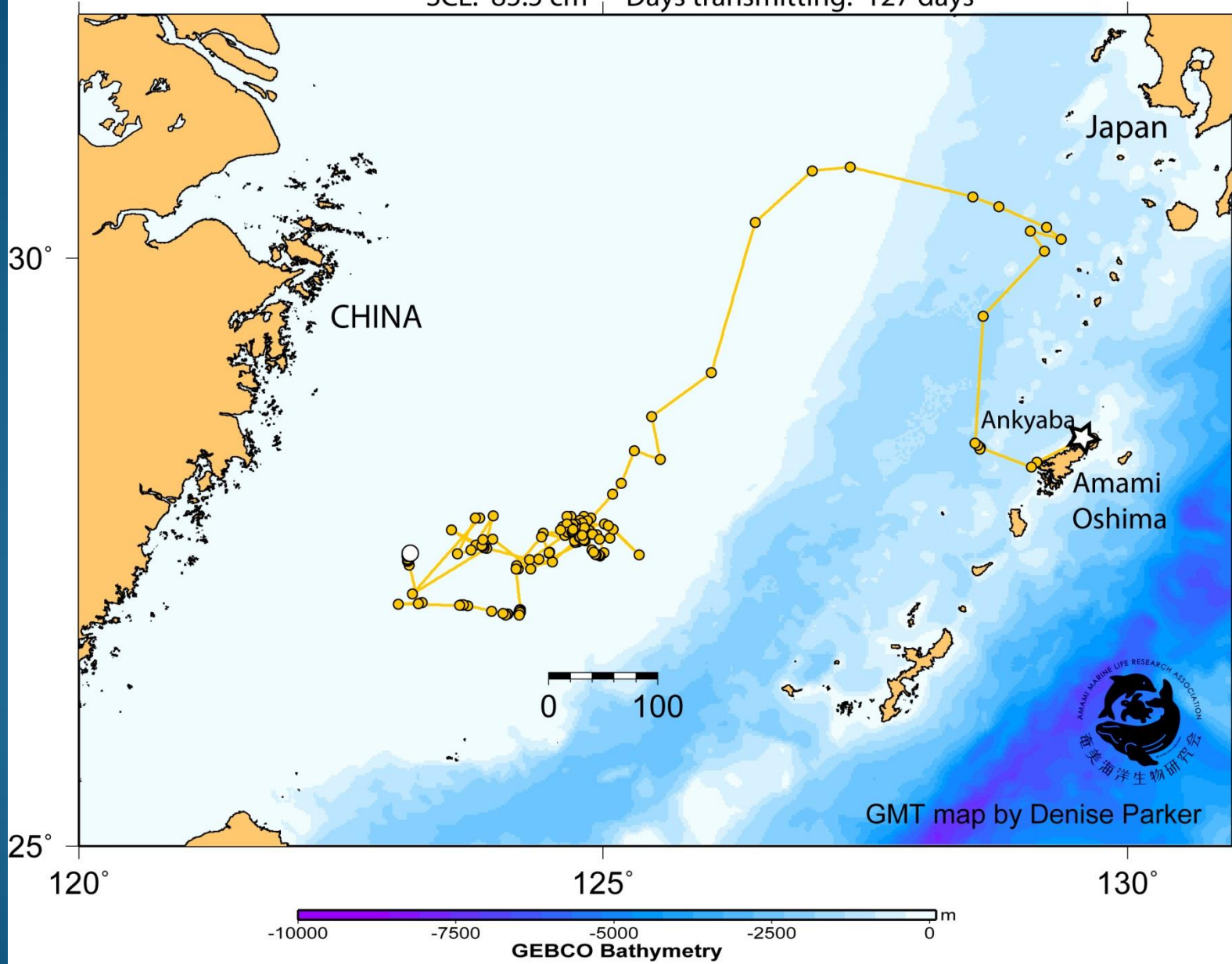
FINAL MAP:

2015 movement of post-nesting loggerhead turtle ID 57147

Released from Ankyaba Beach, Amami Island, Japan

TAM-2639 transmitter Duty cycle: 6 hr on/24 hr off

SCL: 85.5 cm Days transmitting: 127 days



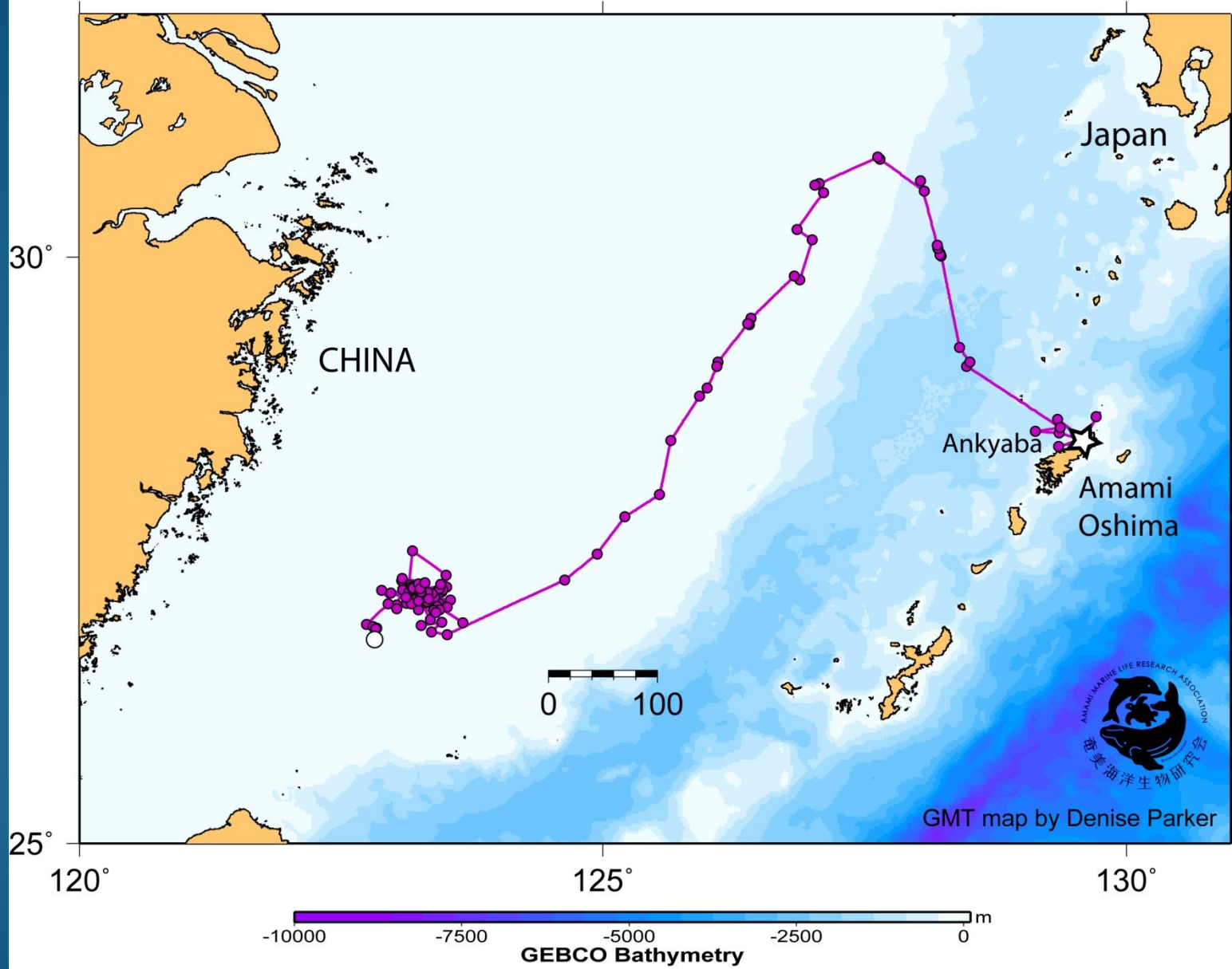
FINAL MAP:

2015 movement of post-nesting loggerhead turtle ID 53766

Released from Ankyaba Beach, Amami Island, Japan

TAM-2639 transmitter Duty cycle: 6 hr on/24 hr off

SCL: 85.6 cm Days transmitting: 153 days



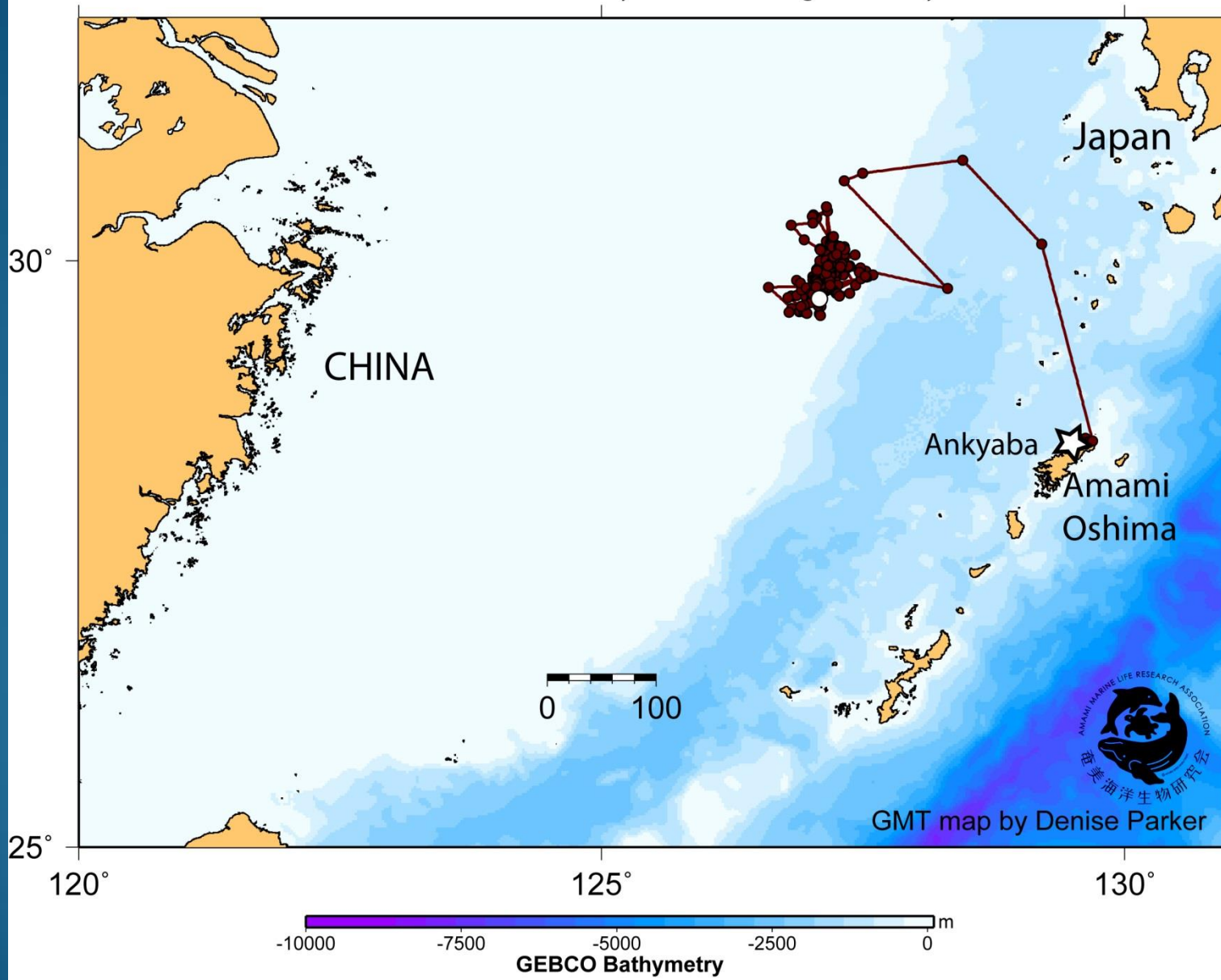
Update as of 20 January 2016:

2015 movement of post-nesting loggerhead turtle ID 53749

Released from Ankyaba Beach, Amami Island, Japan

TAM-2639 transmitters Duty cycle: 6 hr on/24 hr off

SCL: 85.7 cm Days transmitting: 202 days



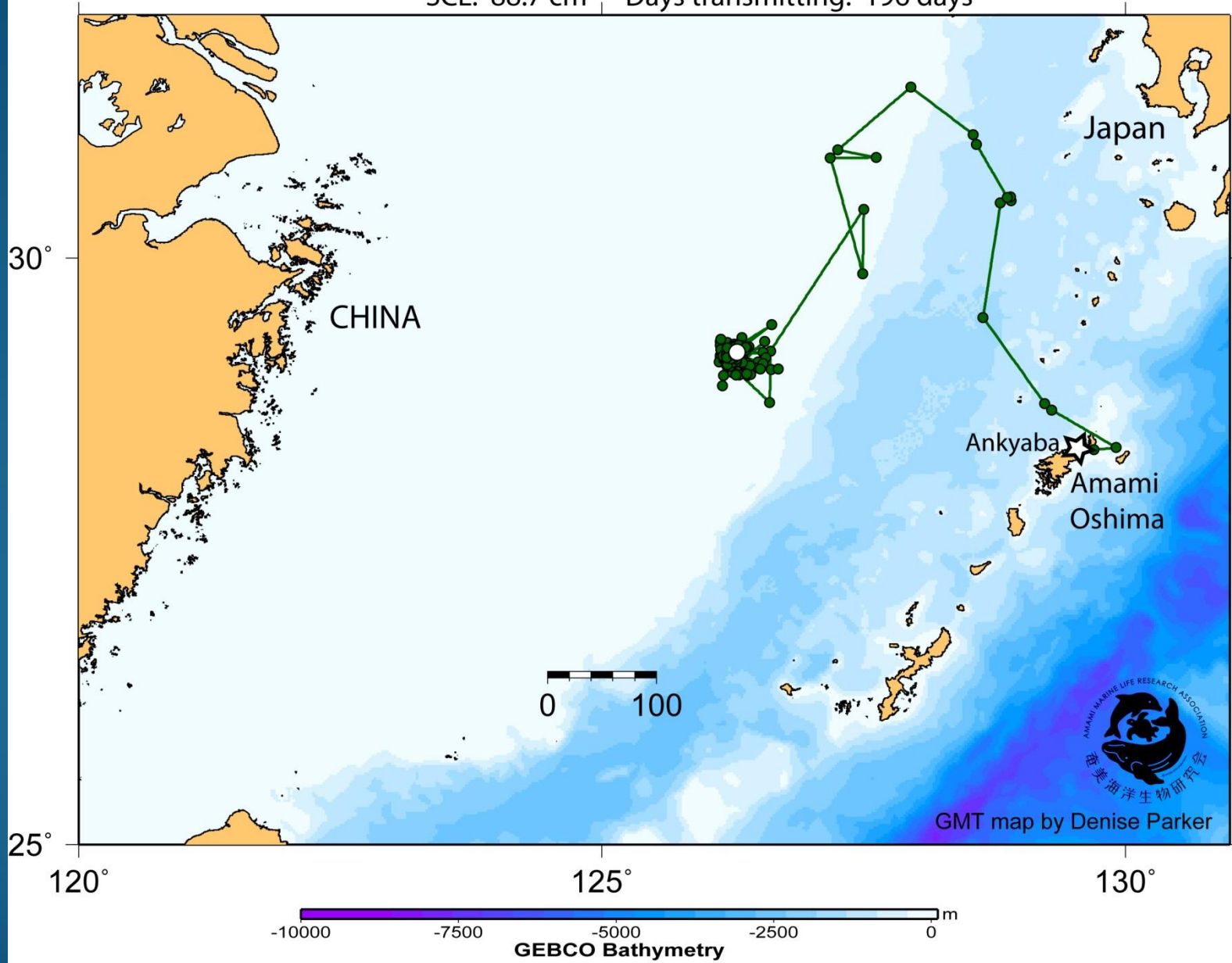
Update as of 20 January 2016:

2015 movement of post-nesting loggerhead turtle ID 71916

Released from Ankyaba Beach, Amami Island, Japan

TAM-2639 transmitter Duty cycle: 6 hr on/24 hr off

SCL: 88.7 cm Days transmitting: 196 days





Update as of 20 January 2016:

2015 movement of post-nesting loggerhead turtle ID 50148

Released from Ankyaba Beach, Amami Island, Japan

TAM-2639 transmitters Duty cycle: 6 hr on/24 hr off

SCL: 102.0 cm Days transmitting: 186 days

