

Magnificent and Mystical Marine Turtles



Cultural Links to Conservation

華麗而神秘的海龜



從文化聯繫到保育

Leatherback





Hawksbill

Honu'ea

玳瑁

Olive Ridley

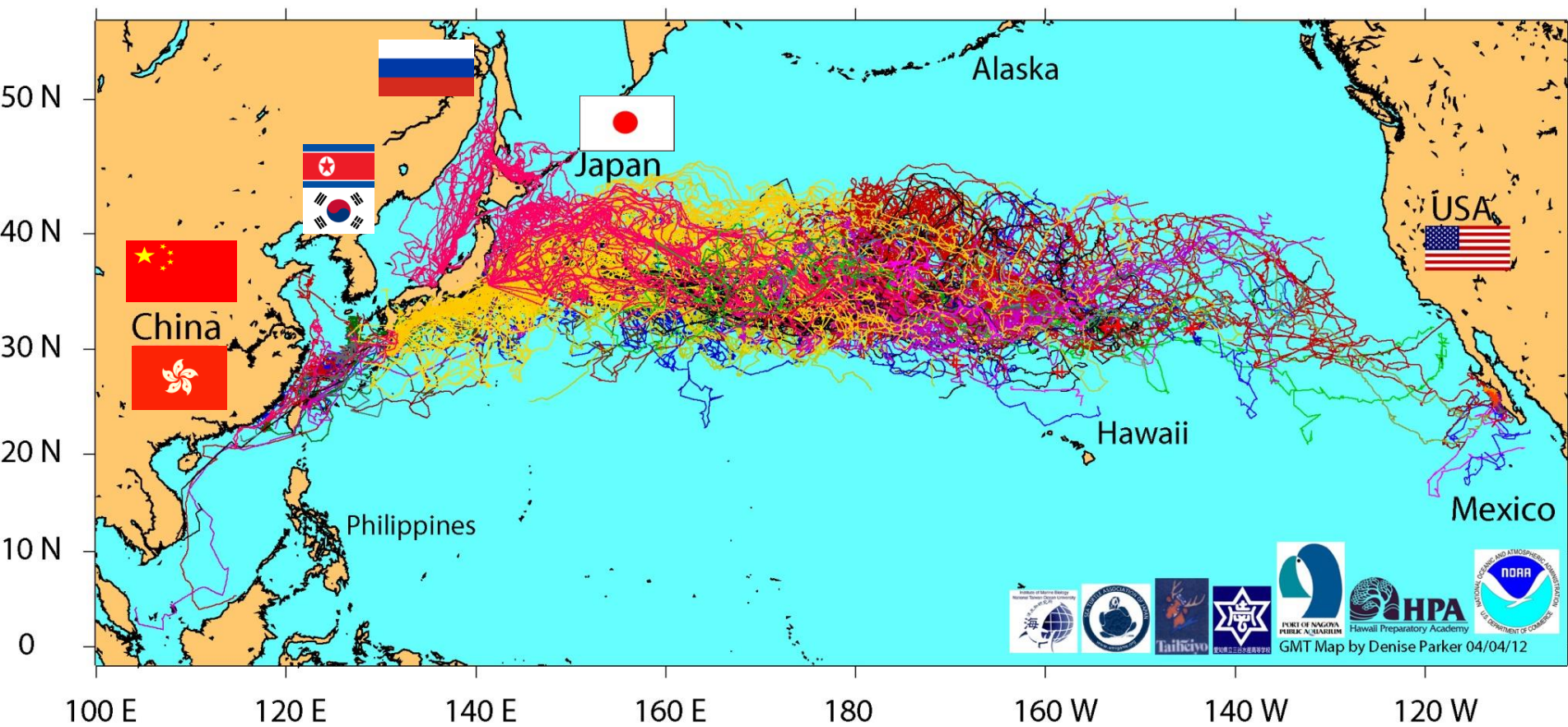


赤蠵龟



North Pacific Loggerhead

1997-2012 Satellite Tracking of Pelagic North Pacific Loggerheads



Green Turtle

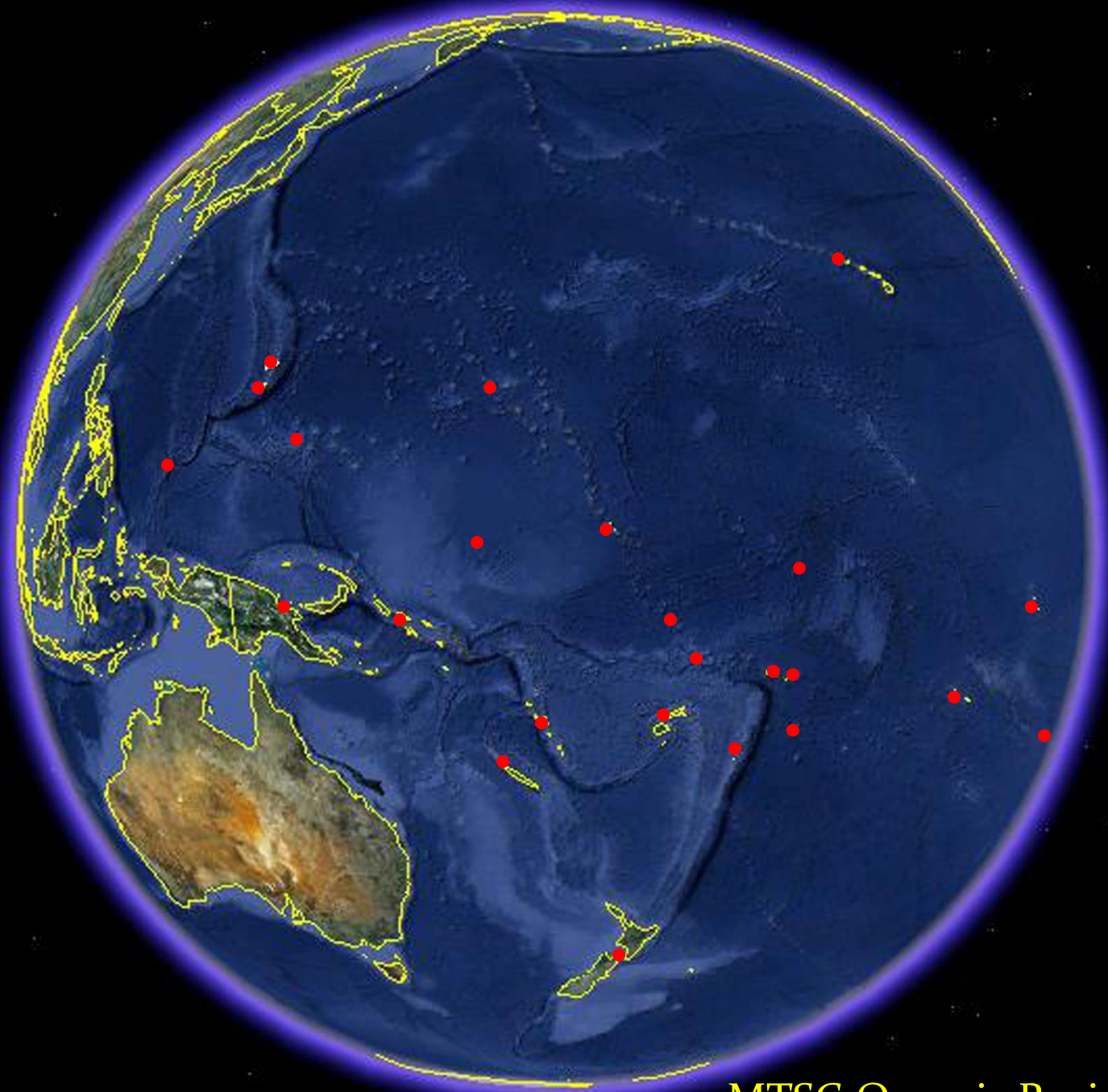
Honu

綠蠐龜

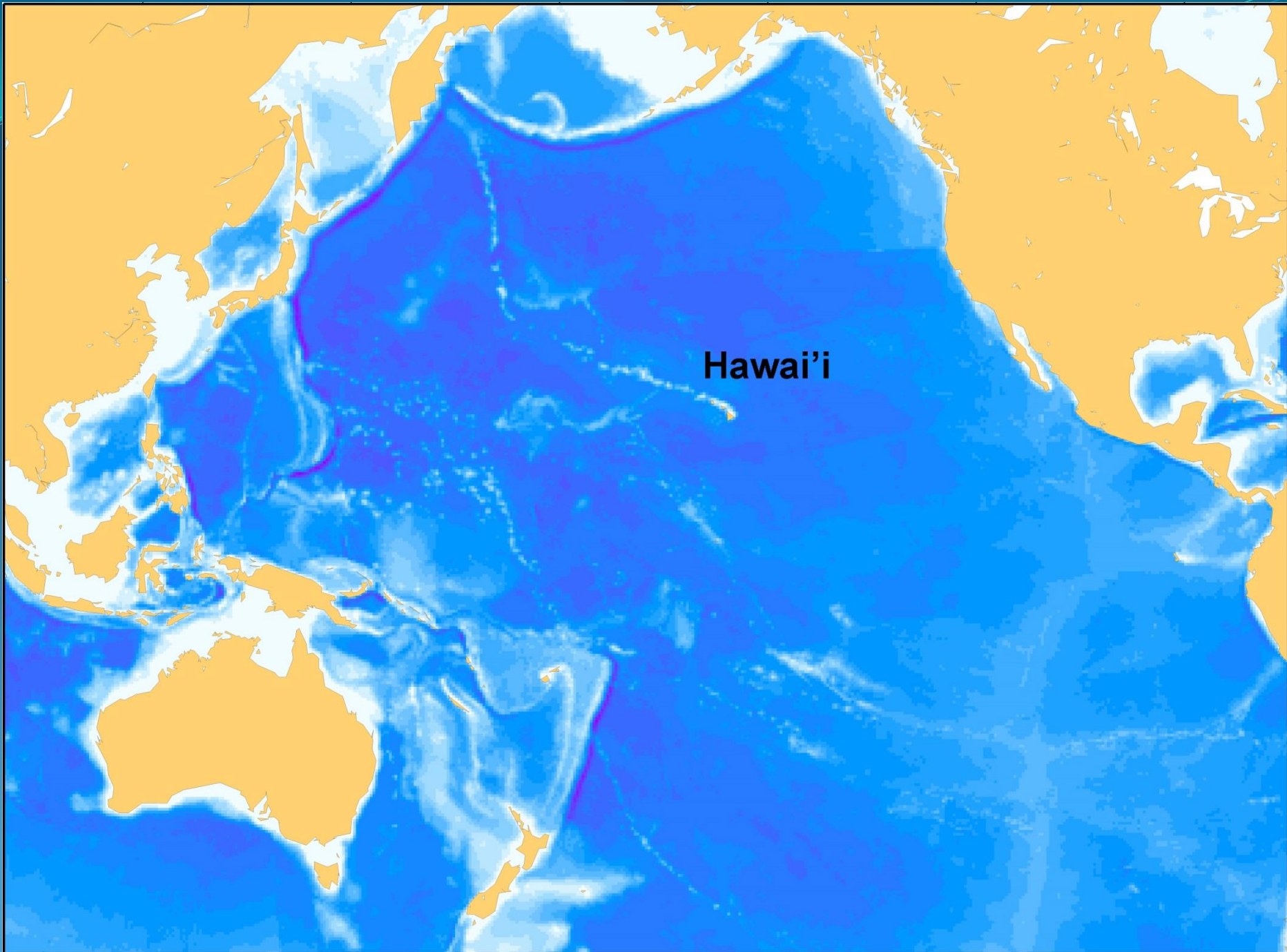


Hawaiian Green Turtle





MTSG Oceania Region



Hawai'i

KAUAI

Lihue

To Toronto (Can)...4750 m

OAHU

Honolulu

MOLOKAI

Lahaina

MAUI

Kahului

To Los Angeles (U.S.A)...2560 m

LANAI

KAHOOLAWE

To Sydney (Aus)...5310 m

HAWAII

Hilo

Kona

HAWAIIAN ISLANDS



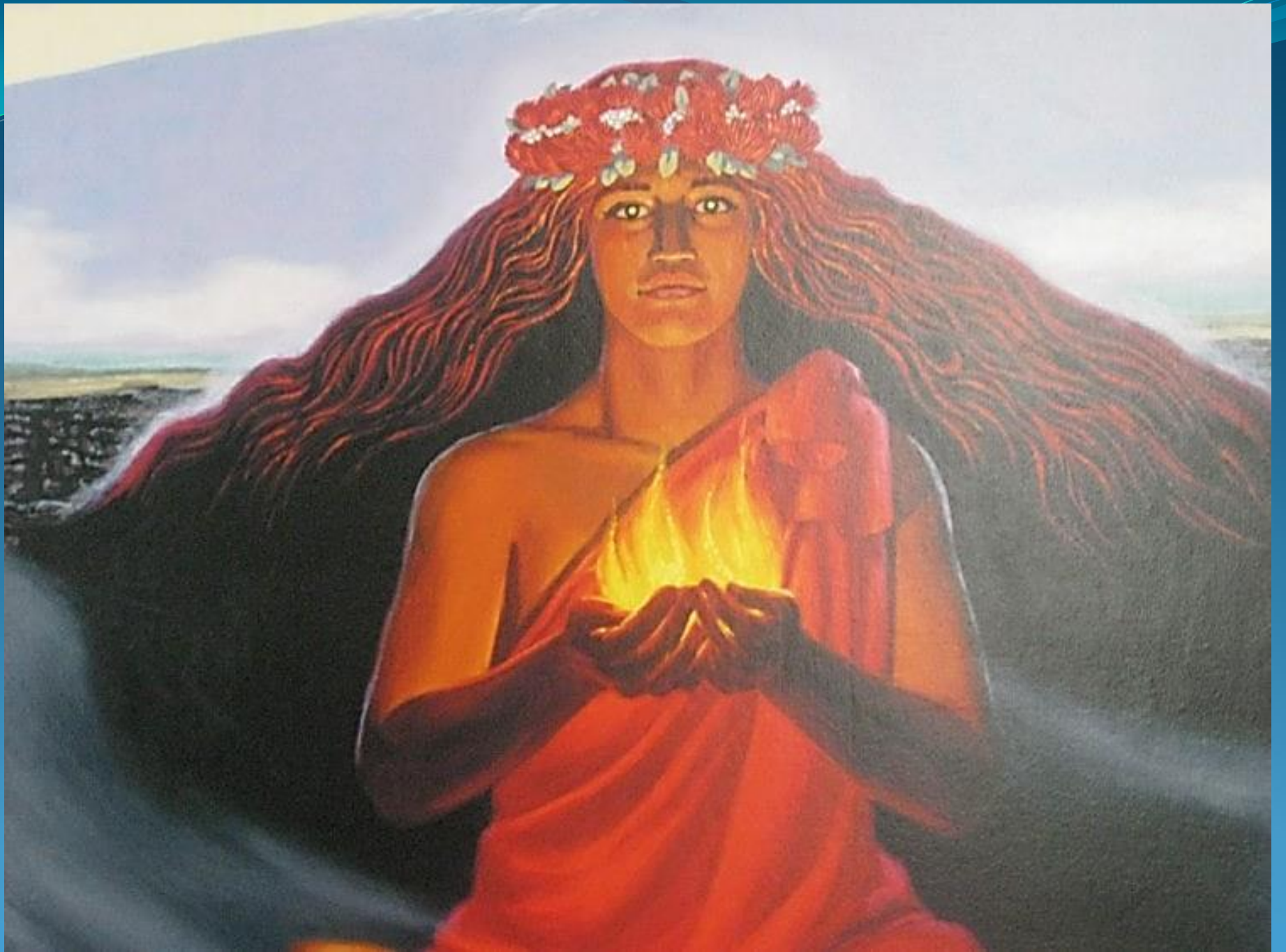
NIHAU

To Tokyo (Jap)...3850 m





THE ROYAL HAWAIIAN HOTEL, C.1928





協天宮

和興會館

興讓洽

和平聯

國父遺囑

余致力國民革命，凡四十年，其目的在求中國之自由平等。積四十年之經驗，深知欲達到此目的，非喚起我之民族，

永載中華

孫穗芳博士 主編

Edited by Dr. Lily Sui-fong Sun

國父

孫中山先生

An Album in Memory of Dr. Sun Yat-sen

紀念集

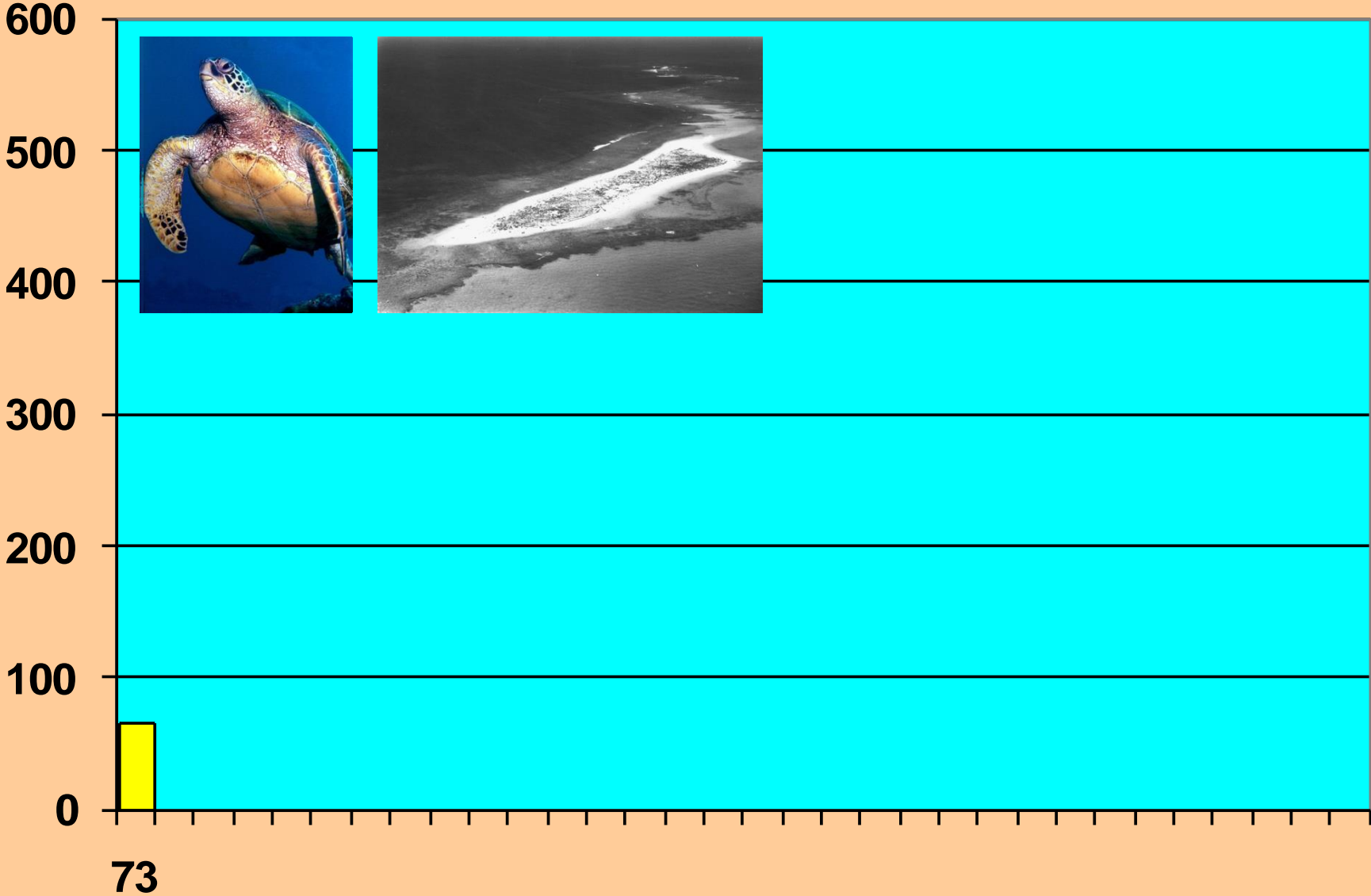




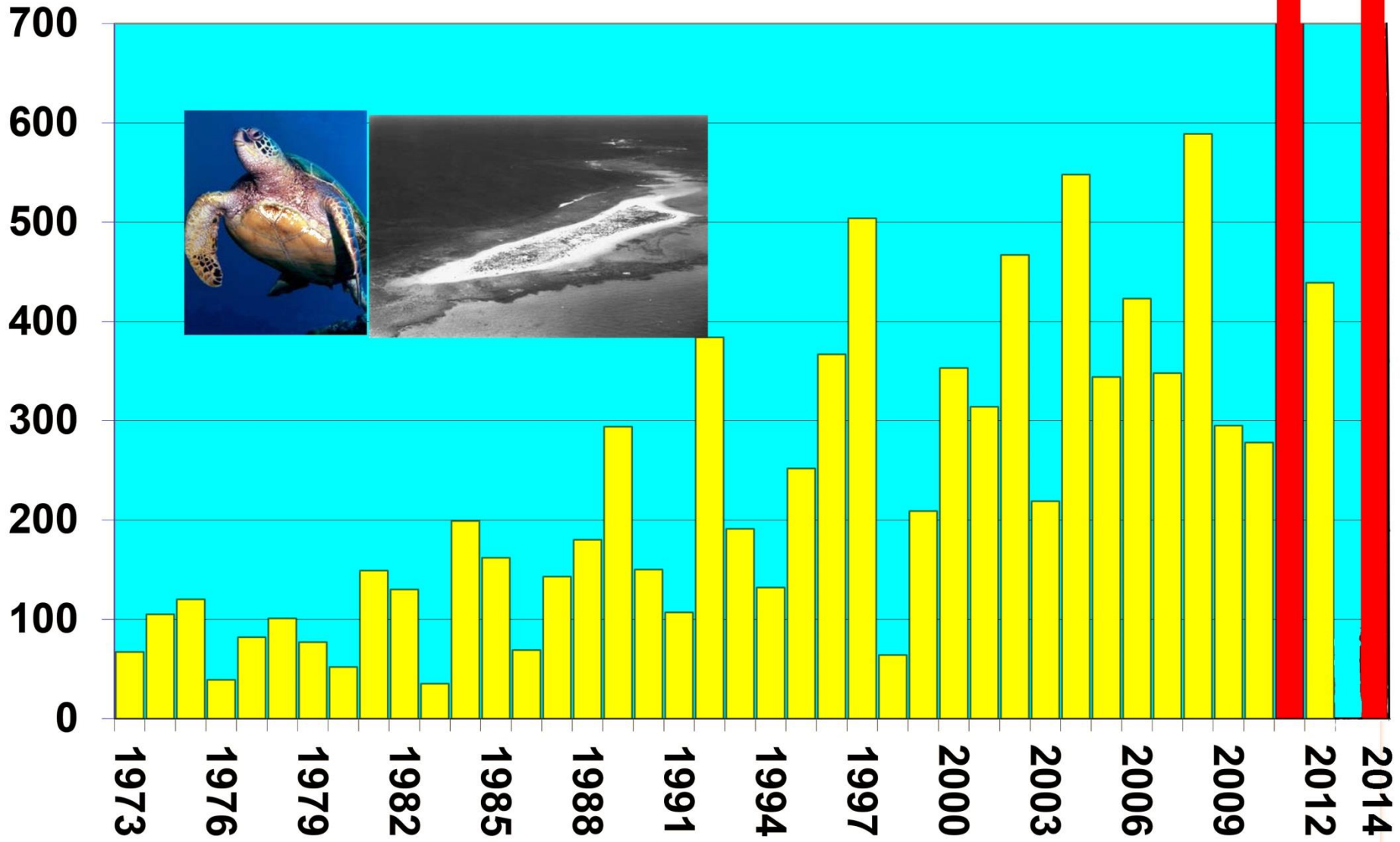




GREEN TURTLES NESTING AT EAST ISLAND



GREEN TURTLES NESTING AT EAST ISLAND FRENCH FRIGATE SHOALS 1973 - 2014



Marine Turtle Research
Pacific Islands Fisheries Science Center
National Marine Fisheries Service

ANNUAL TREND FOR 42 SEASONS

Changing Behaviors



10 5 '99













F R E E

Kauai Dive & Snorkel Map



SEASPORT DIVERS

Voted #1 on Kauai

Polpu (808) 742-9303 • Kapaa (808) 823-9222

Toll Free (800) 685-5889

www.seasportdivers.com



NAUI

DIVE KAUAI



A Kauai's Most
Progressive and Complete
SCUBA Center



Join our professional
dive team for the most
enjoyable vacation.

Professional Service

Swimming and SCUBA diving
for the first time up to
advanced divers

(808) 822-0452

822-8666 (222)

Toll Free (800) 826-3483

Fax (808) 823-9515

1038 Kuhio Highway

Kapaa, HI 96746

www.divekauai.com

MANA DIVERS



Nature



Adventure

"BE OUR GUEST,
DISCOVER KAUAI'S BEST"

MANA DIVERS

808-335-0881

4420 WILSON ROAD, BOX 7

PO BOX, KAUAI, HAWAII

PHONE 808-335-0881

WELDER, KAUAI, HAWAII, PETAH

TOURING KAUAI'S BEAUTIFUL

SOUTH SHORE - SUNNY POIPU

EAST SHORE - COCONUT COAST

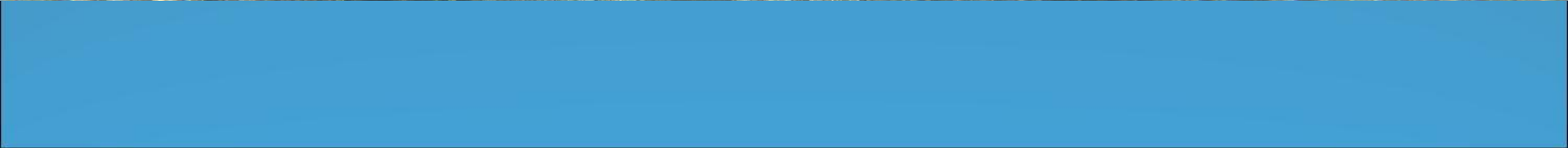
HISTORIC WEST SHORE & PRISTINE NORTH SHORE



2013 07 15



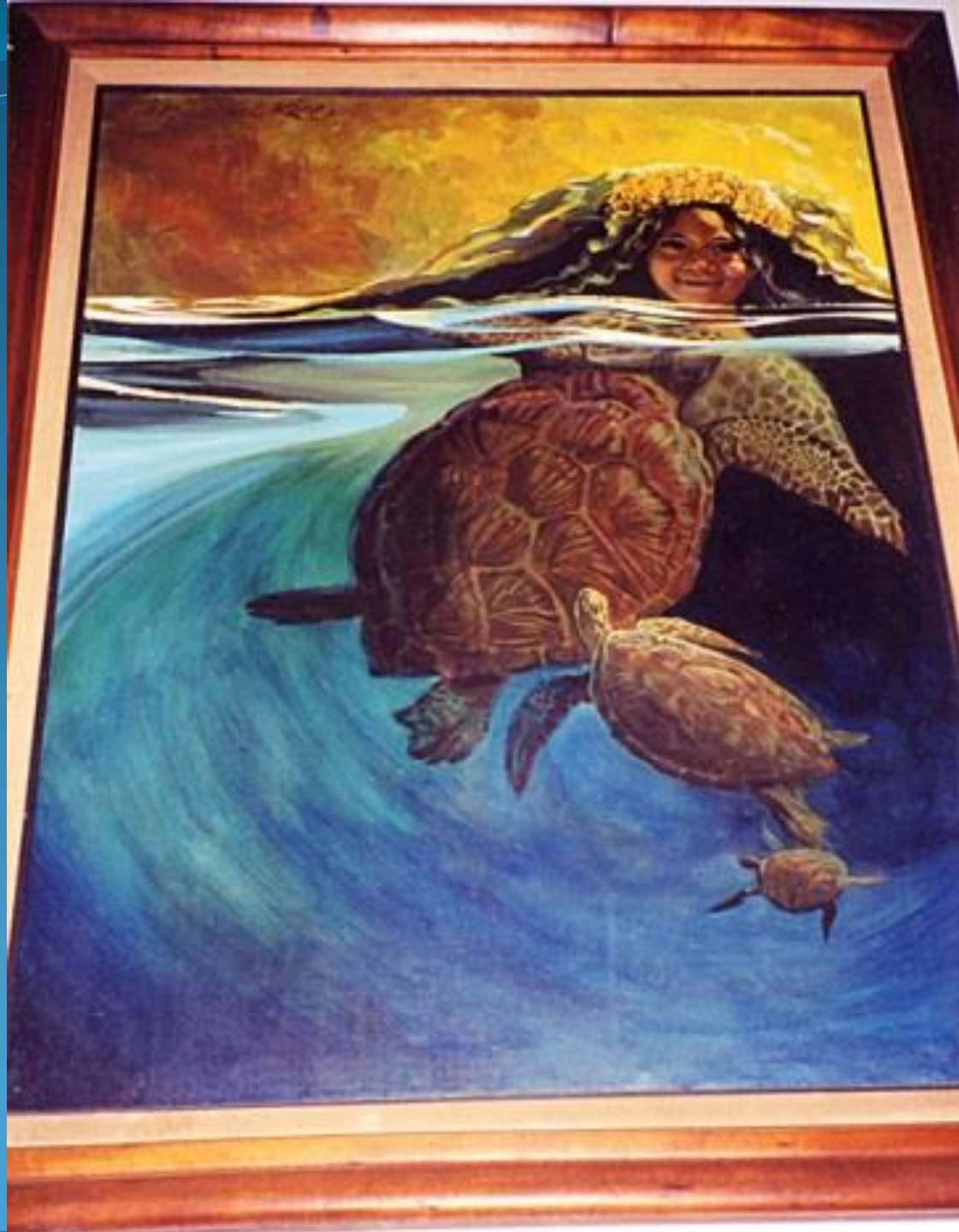
2013 07 15





2013 07 15







Noel Morata Photography















保海





新莊新田頭

柯敬

西年瑞月吉

境安四
廠南
宮安保

白蓮聖母

白蓮聖母
靈水

境安四
廠南
宮安保

白蓮聖母



母
水

媽
水
口



Restocking marine resources event at Xunliao, Guangdong, in June 2012

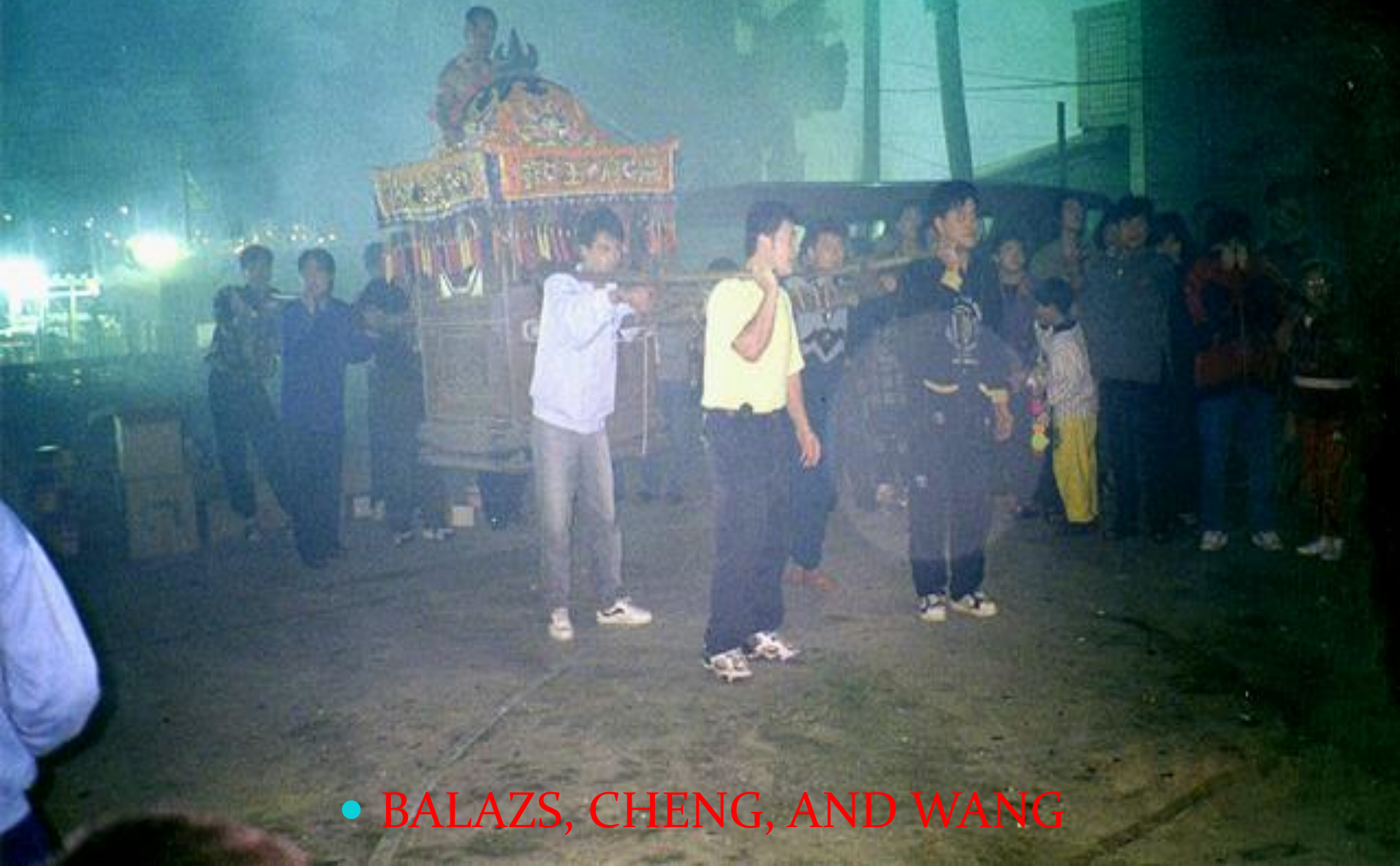


Releasing Turtles for Research



海龟放流的研究机会

TURTLE SACRIFICE TO THE TEMPLE GODS IN THE PENGHU ISLANDS



• BALAZS, CHENG, AND WANG



天母聖母



07/01/98



赫濯神靈傳此極

東甲北極殿
甲午年元宵節
平安大米龜
16.8888斤



公北社

公北社

公北社

公北社

公北社

公北社

公北社

公北社

風調雨順

公北社







文昌小博士 糖果
心願糖 每斤 0.00元

文昌小博士 糖果
心願糖 每斤 0.00元

160

160

160

160

160



金峰銀樓承製

國泰

廟宇

廟宇

廟宇

安







Cultural Considerations
in Conservation



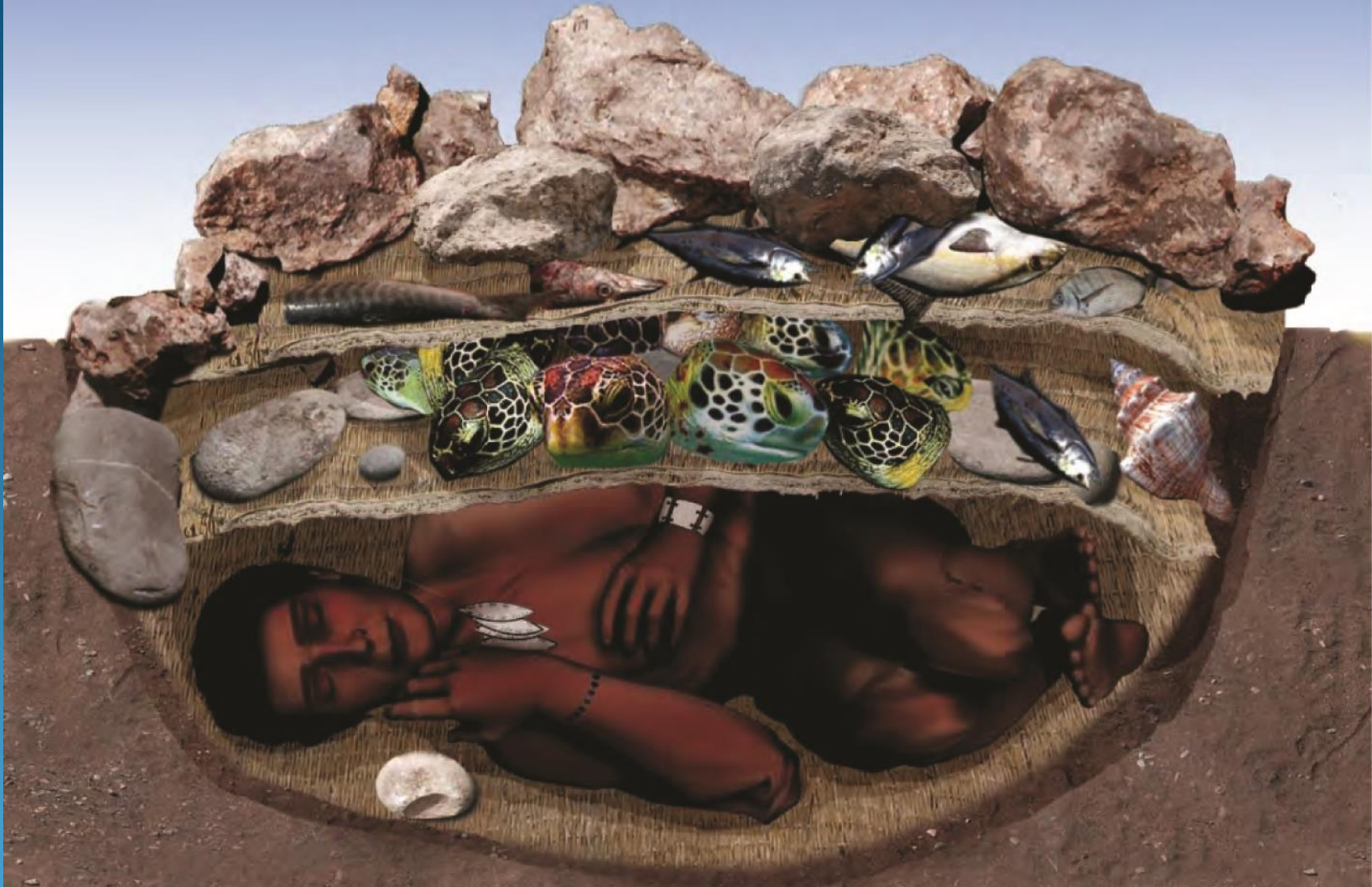




















Of All The Things One Can Take
When Visiting a New Place
the Most Important is an
Open Spirit

以開放的態度接受與你不同
的新地方、人、事物







CHINA/USA Sea Turtle Workshop NOAA CAFS USGS

Hawaii 2014



