

Aloha

FROM

HAWAII

Magnificent Marine Turtles of the Hawaiian Islands

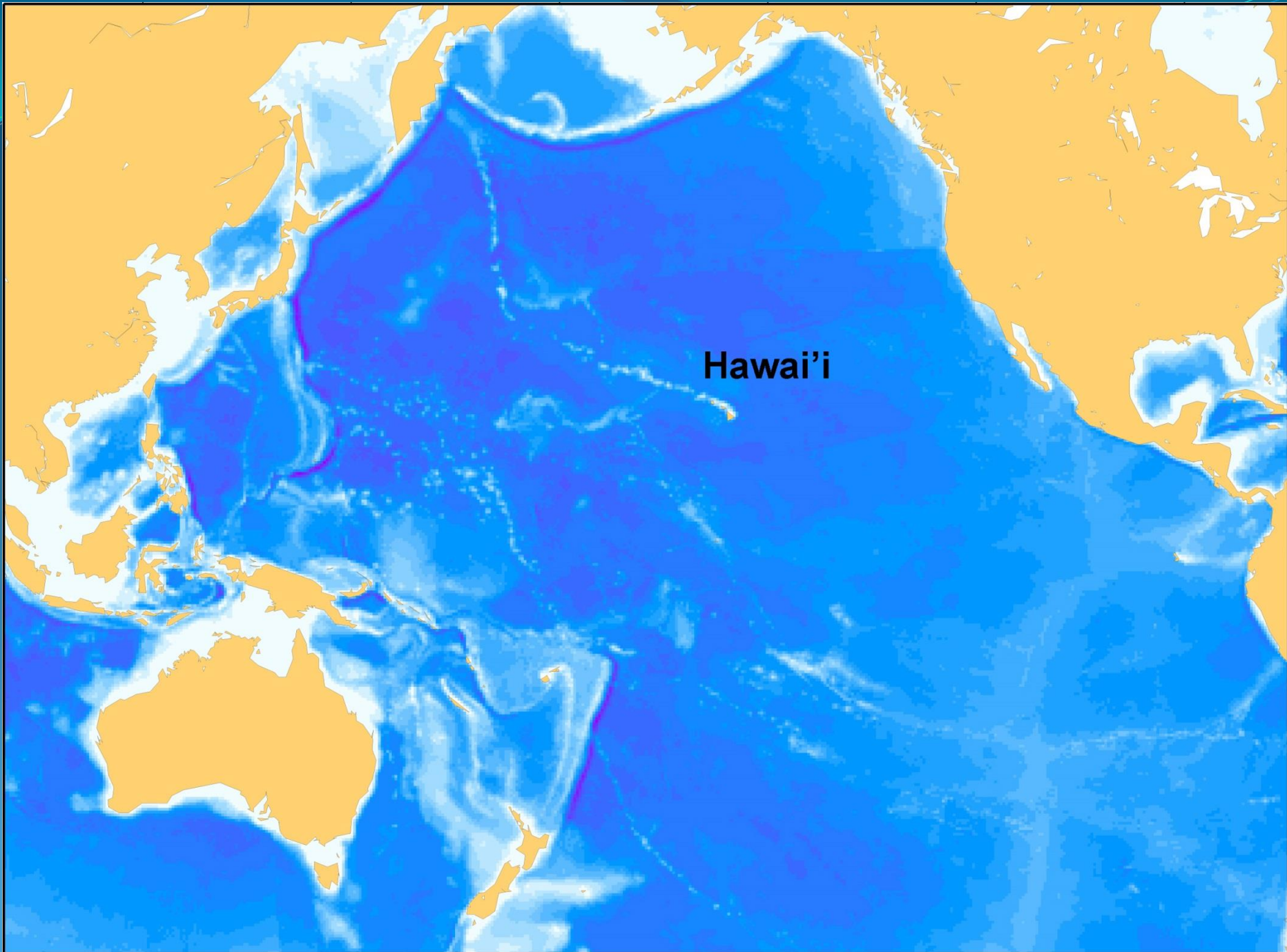
素晴らしきハワイ諸島の
ウミガメたち



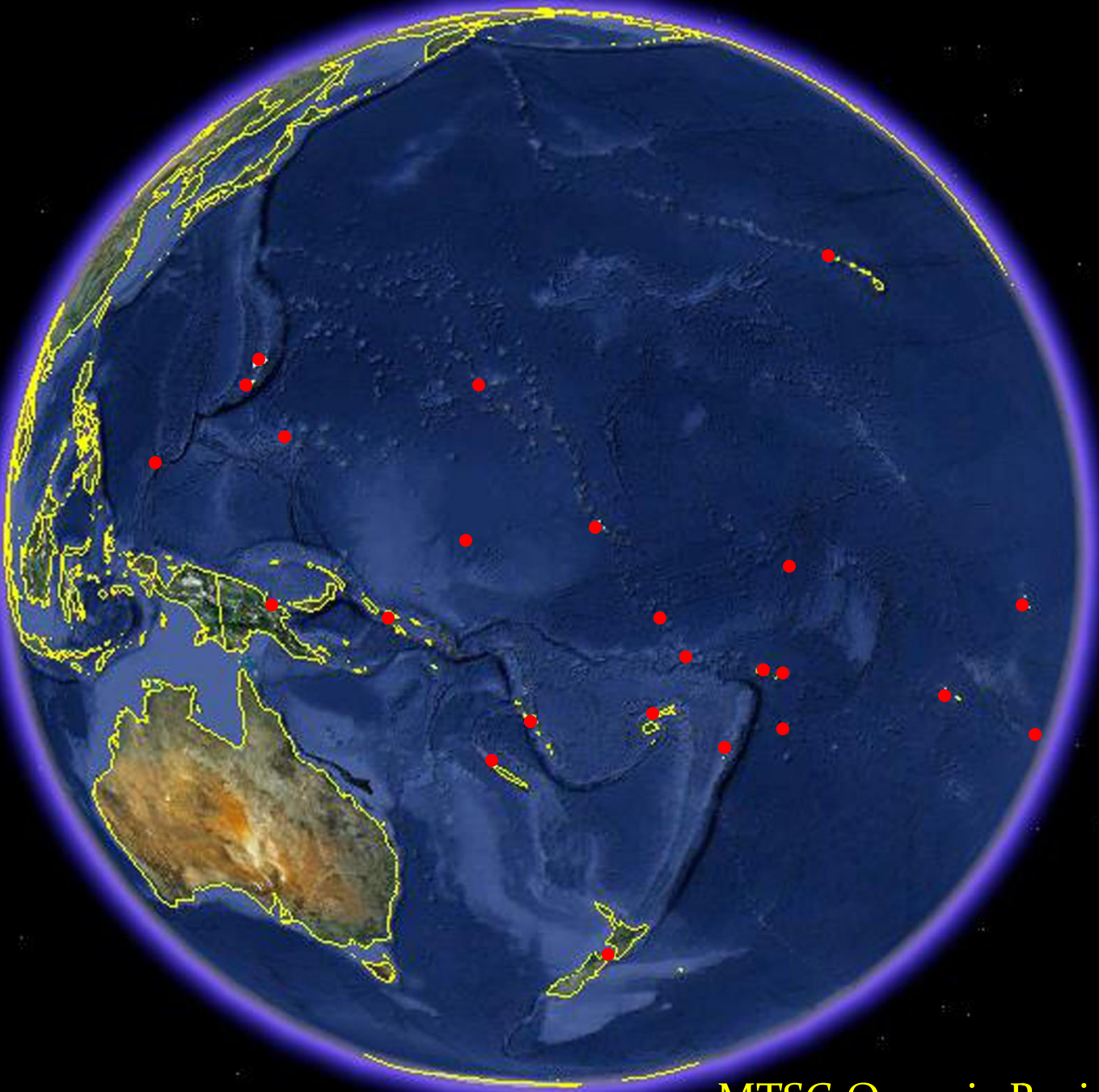


**An Amazing 40-Year
Rise to Abundance**

驚異的な回復を遂げた40年



Hawai'i



MTSG Oceania Region

KAUAI

Lihue

To Toronto (Can)...4750 m

OAHU

Honolulu

MOLOKAI

Lahaina

MAUI

Kahului

LANAI

KAHOOLAWE

To Los Angeles (U.S.A)...2560 m

HAWAII

Hilo

Kona

To Sydney (Aus)...5310 m

To Tokyo (Jap)...3850 m

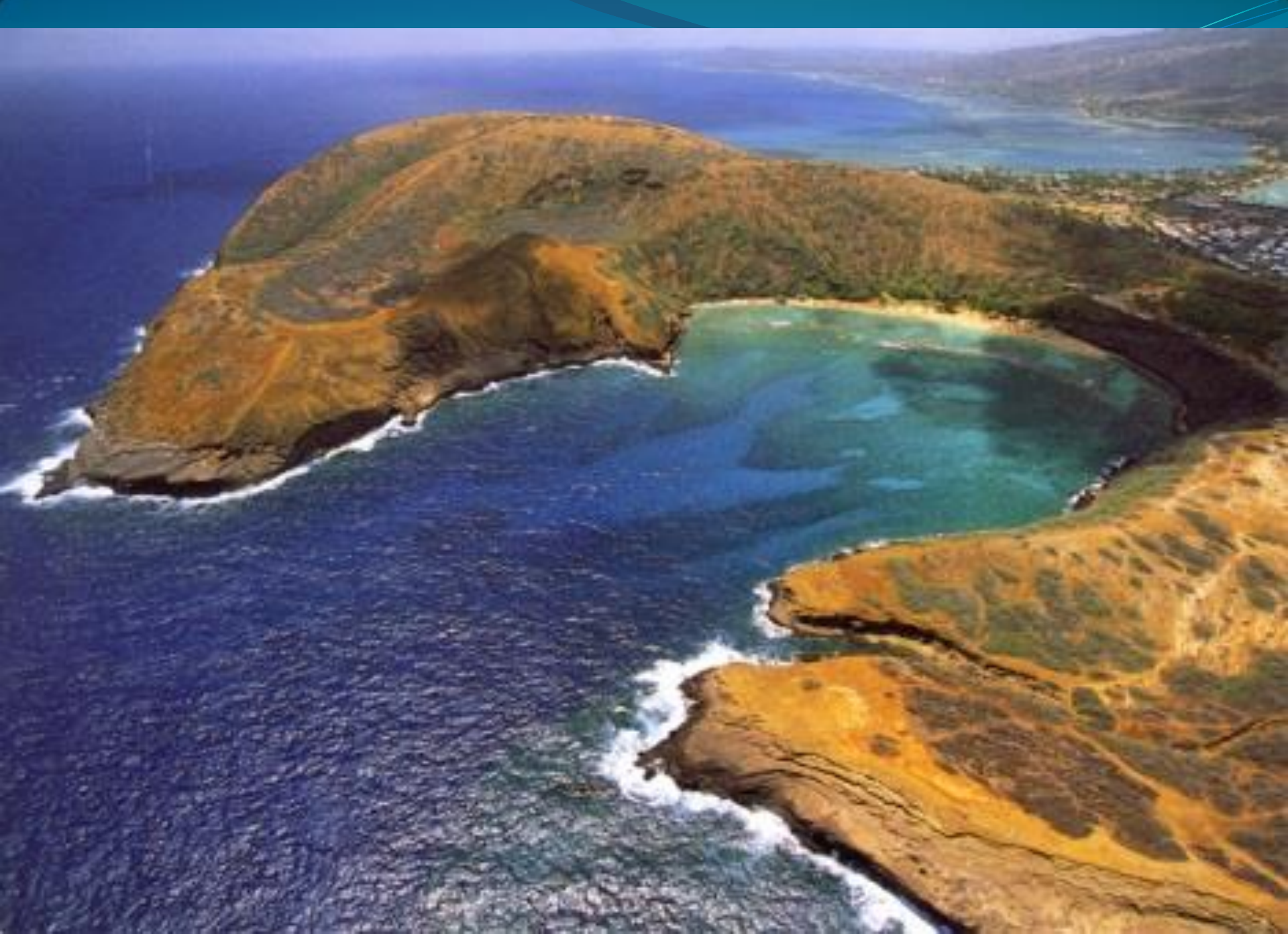
NIHAU

HAWAIIAN ISLANDS









アオウミガメ
Honu



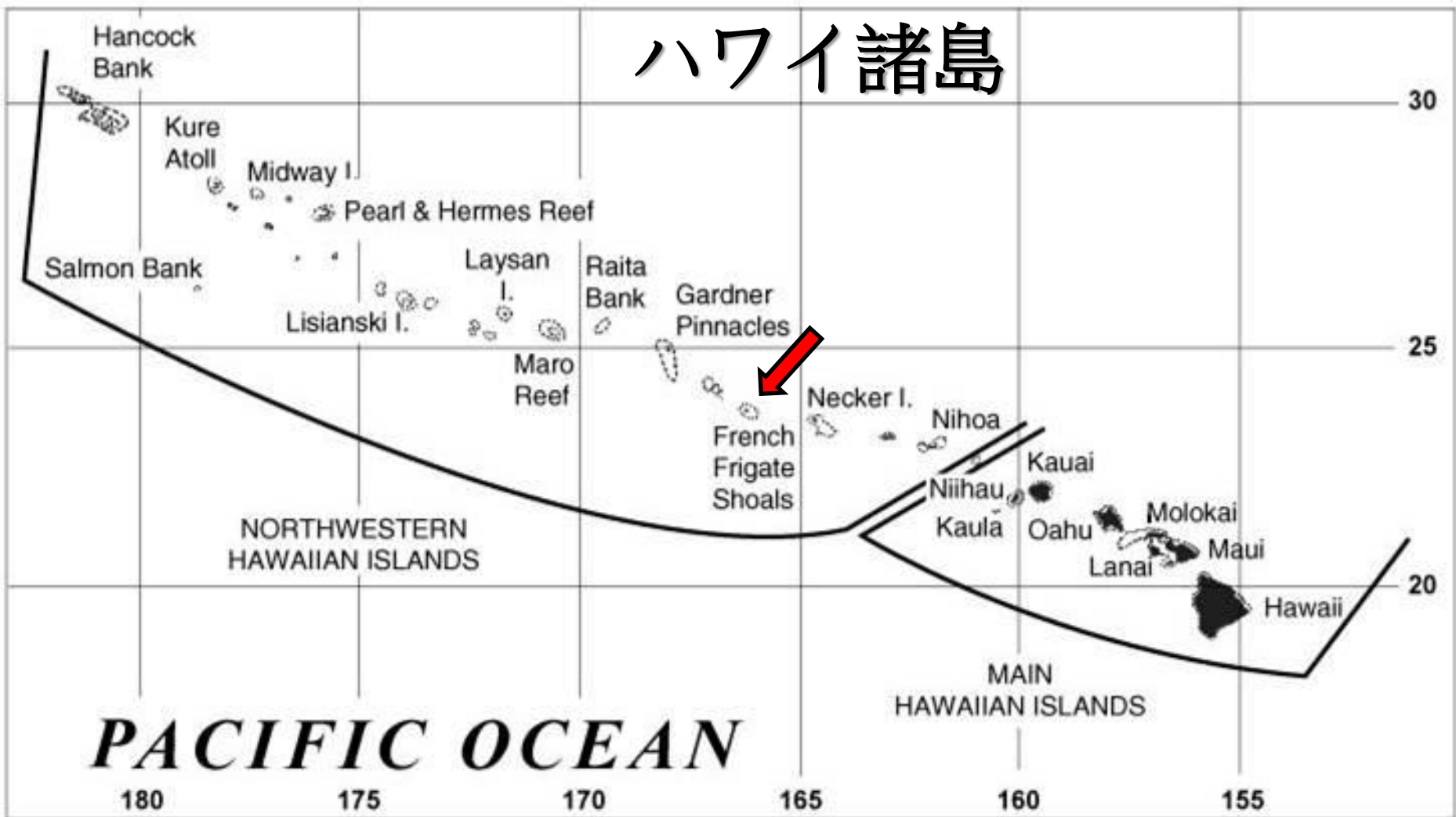
HAWAIIAN GREEN SEA TURTLE



Hawaiian Green Turtle *Chelonia mydas*



ハワイ諸島



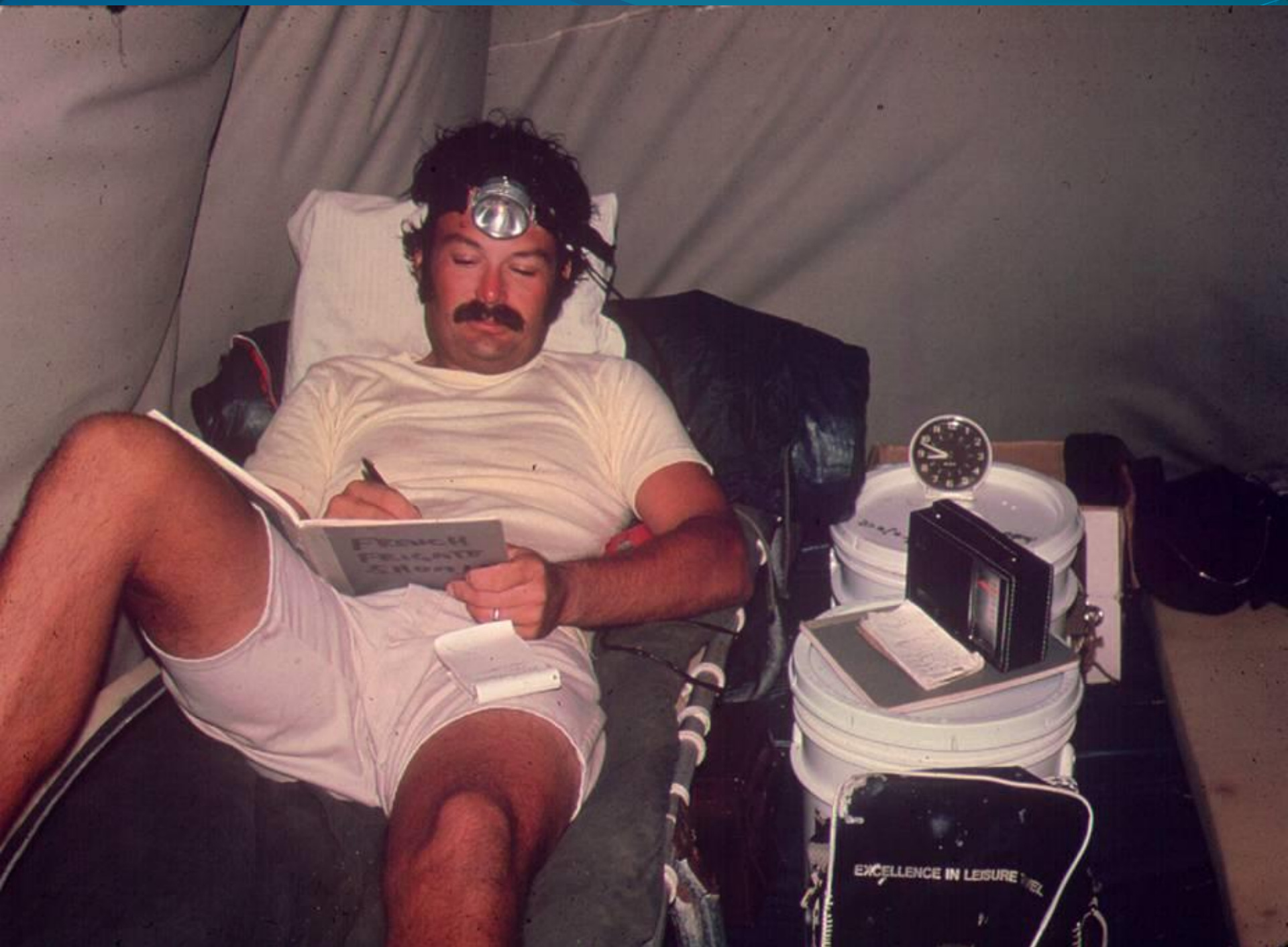
The Hawaiian Archipelago











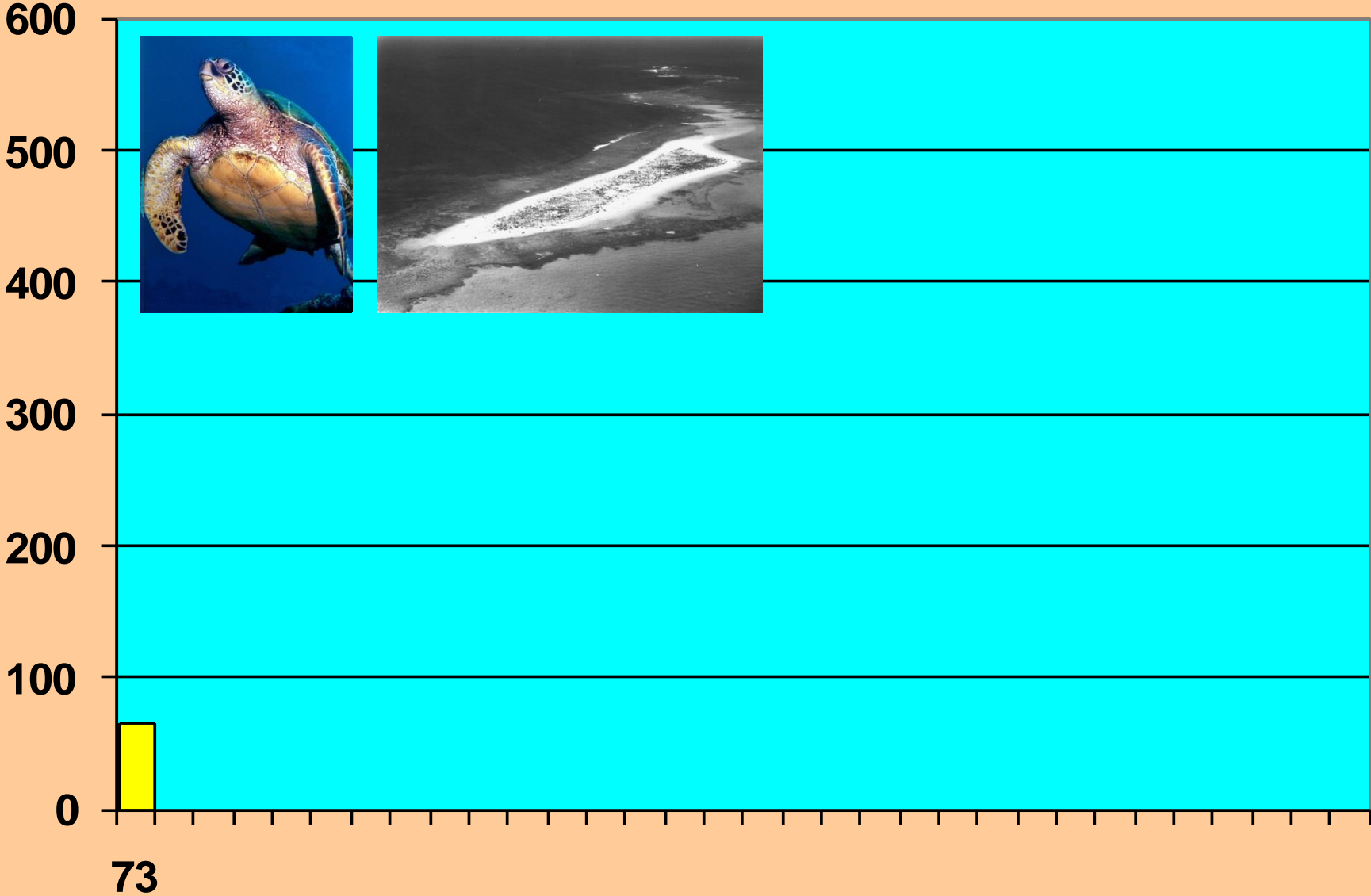
FRENCH FREIGHT SHOPS

EXCELLENCE IN LEISURE





GREEN TURTLES NESTING AT EAST ISLAND



WANTED!



FOR
STEAKS, SOUPS
PURSES,
SHOES
ETC.
ETC.

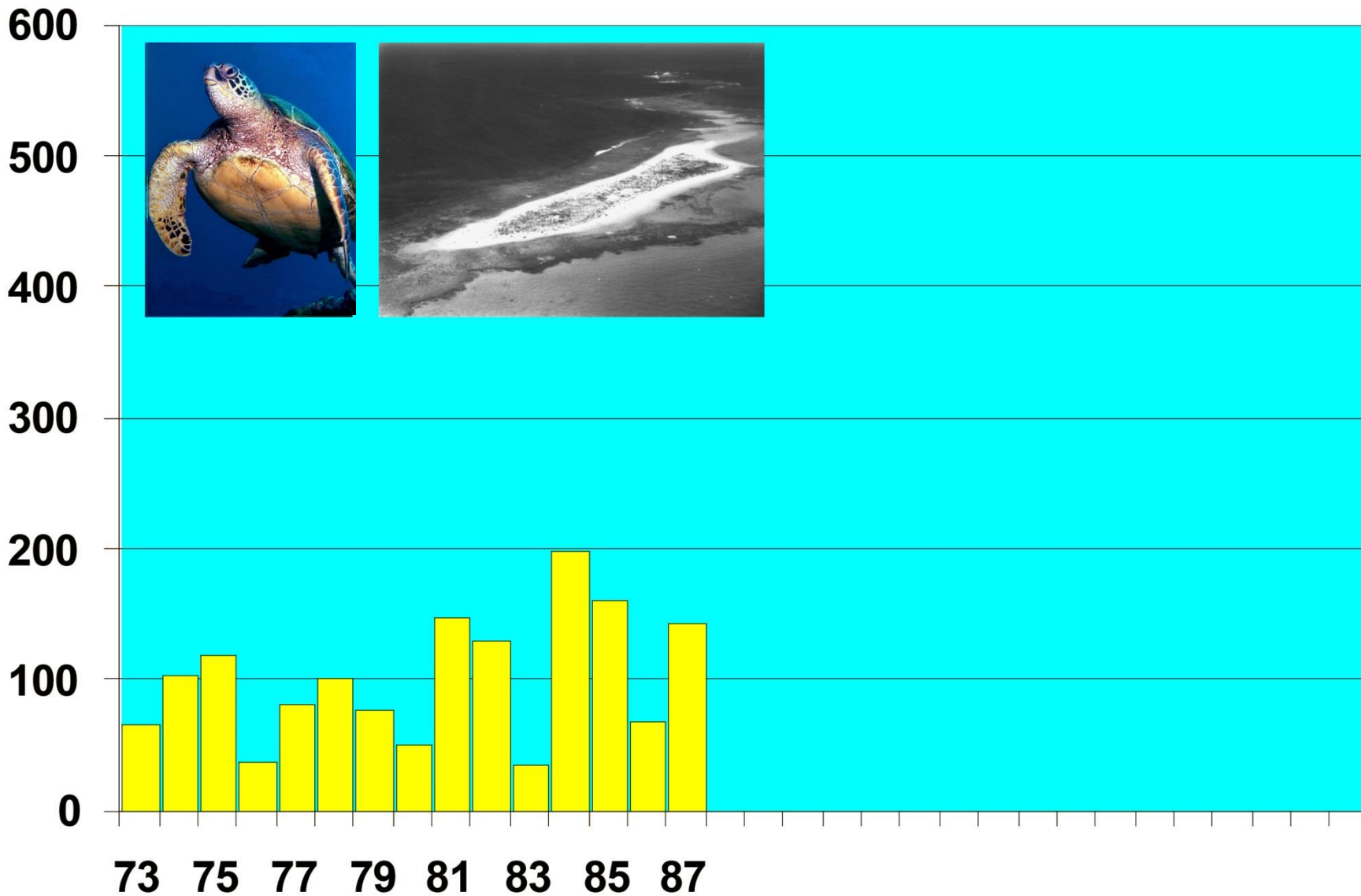


REPRODUCTION OF THE ORIGINAL

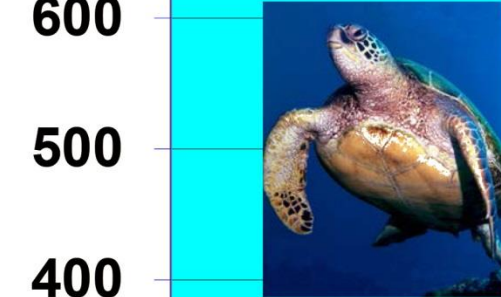
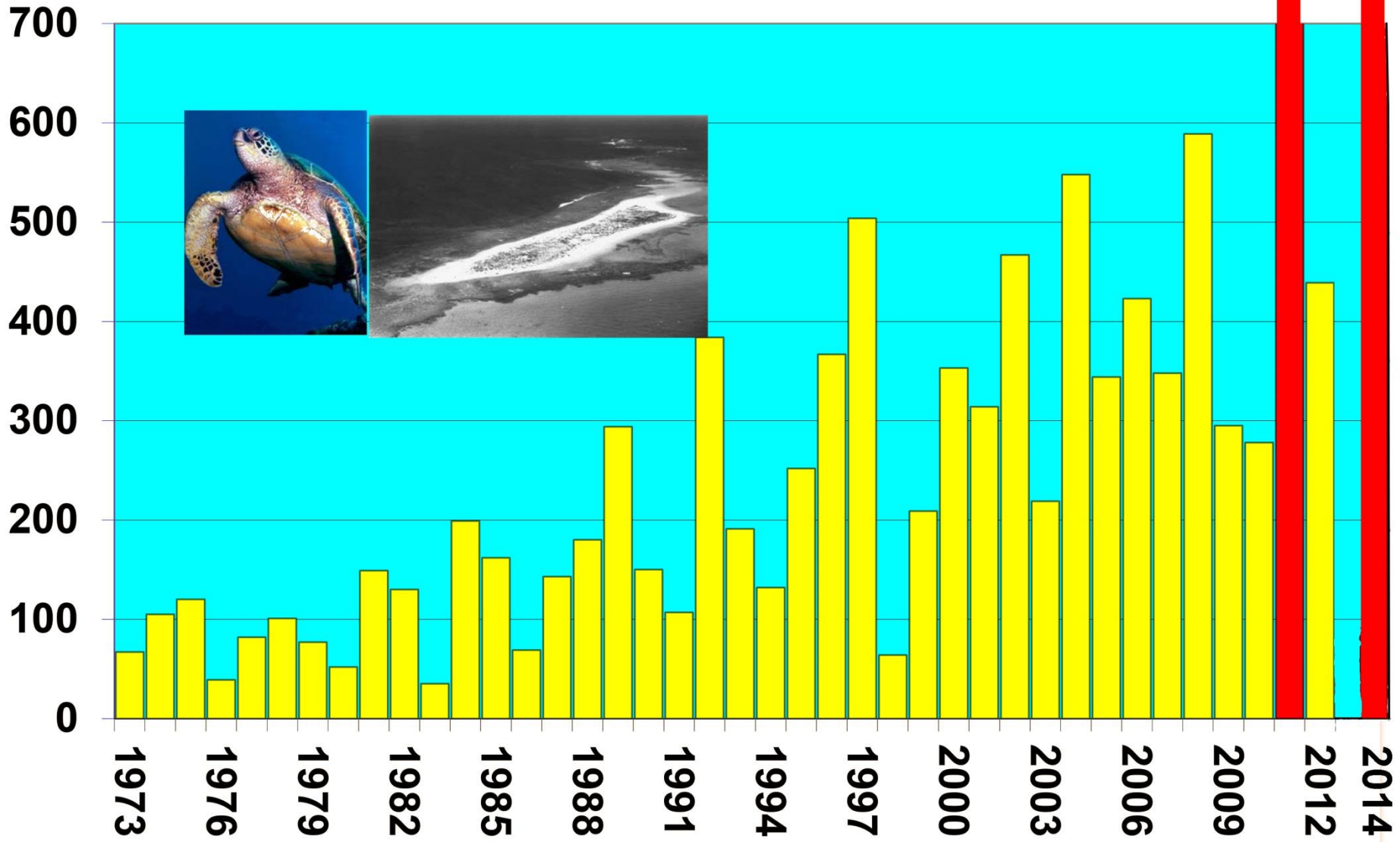
1976



GREEN TURTLES NESTING AT EAST ISLAND



GREEN TURTLES NESTING AT EAST ISLAND FRENCH FRIGATE SHOALS 1973 - 2014



Marine Turtle Research
Pacific Islands Fisheries Science Center
National Marine Fisheries Service

ANNUAL TREND FOR 40 SEASONS



Changing Behaviors



10 5 '99





















F R E E

Kauai Dive & Snorkel Map



SEASPORT DIVERS

Voted #1 on Kauai

Popo (808) 742-9303 • Kapaa (808) 823-9222

Toll Free (800) 685-5889

www.seasportdivers.com



NAUI

DIVE KAUAI



A Kauai's Most
Progressive and Complete
SCUBA Center



Join our professional
dive team for the most
enjoyable vacation.

Professional Service

Swimming and SCUBA diving
for the first time up to
advanced divers

(808) 822-0452

822-8666 (222)

Toll Free (800) 826-3483

Fax (808) 823-9515

103B Kuhio Highway

Kapaa, HI 96746

www.divekauai.com

MANA DIVERS



Nature

Adventure



"BE OUR GUEST,
DISCOVER KAUAI'S BEST"

MANA DIVERS

808-335-0881

4420 WILSON ROAD, BOX 7

PO BOX, KAUAI, HAWAII

PHONE 808-335-0881

WILSON, KAUAI, HAWAII, PO BOX 7

TOURING KAUAI'S BEAUTIFUL

SOUTH SHORE - SUNNY POPOA

EAST SHORE - COCONUT COAST

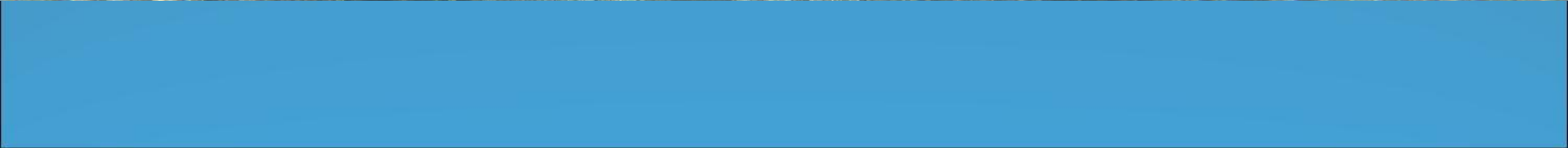
HISTORIC WEST SHORE & PRISTINE NORTH SHORE



2013 07 15



2013 07 15





2013 07 15



Beauty Rest





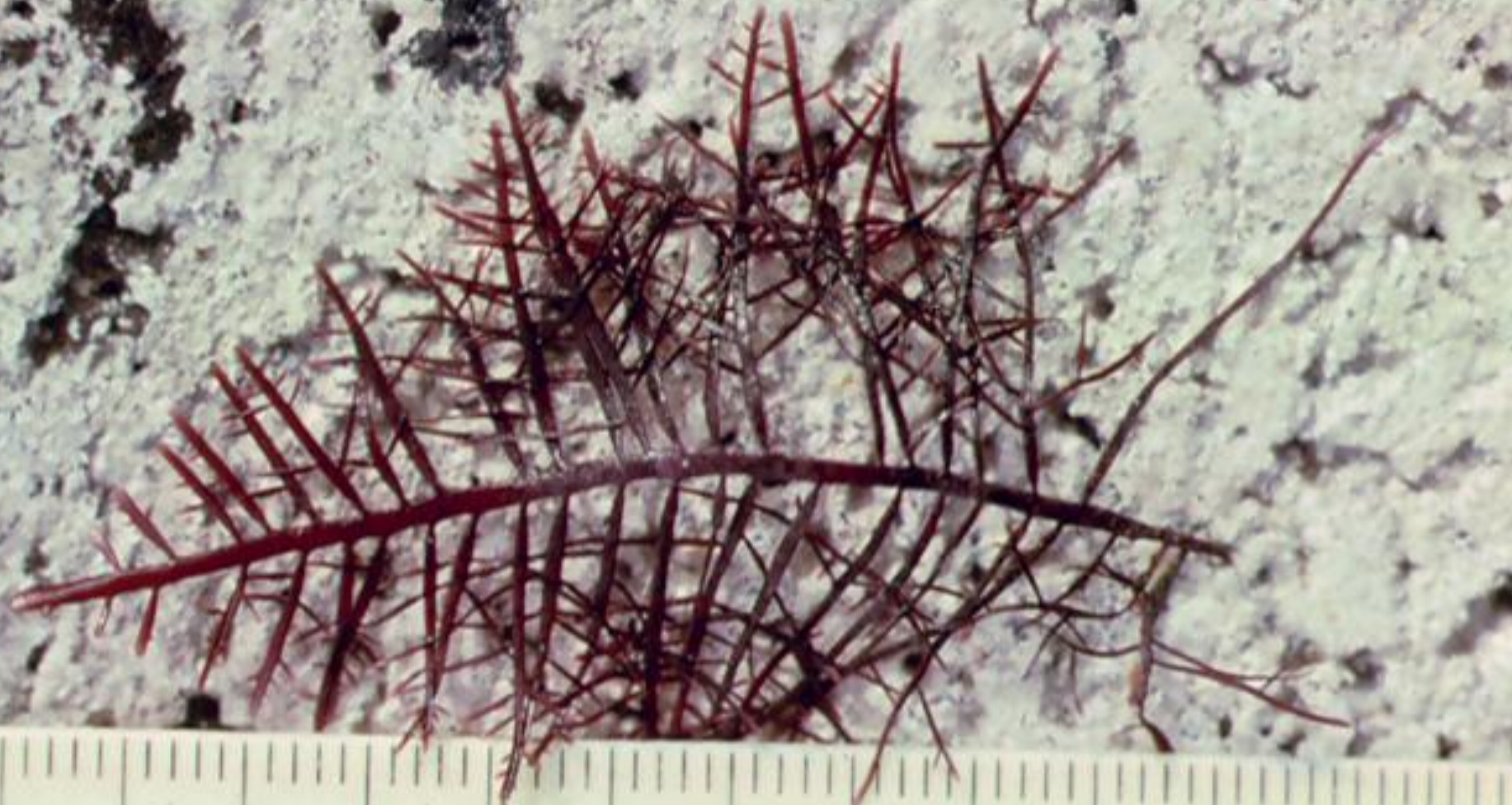






POLYNESIAN CANOE TOURS

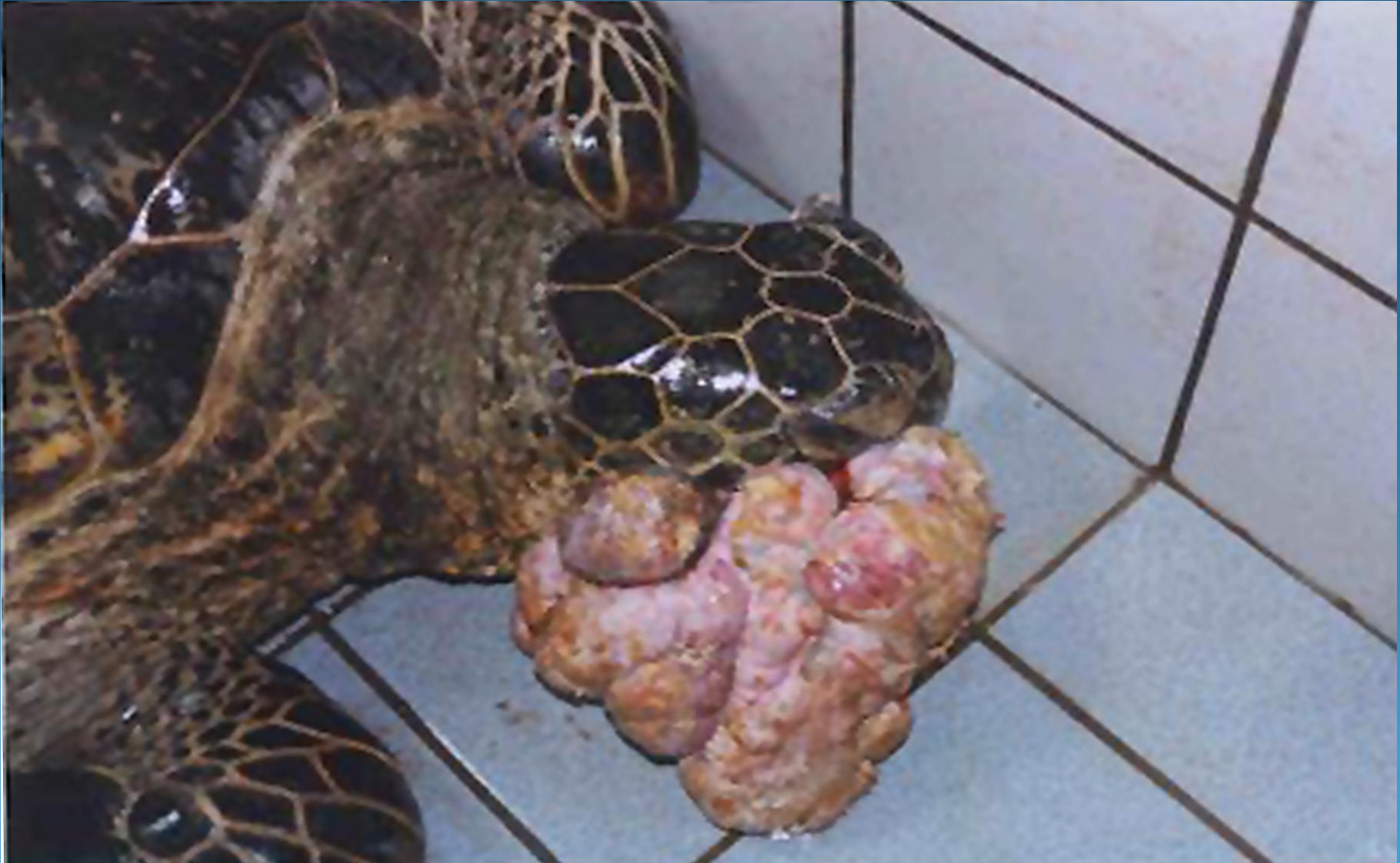
Pterocladia





Large tumor

大型の腫瘍





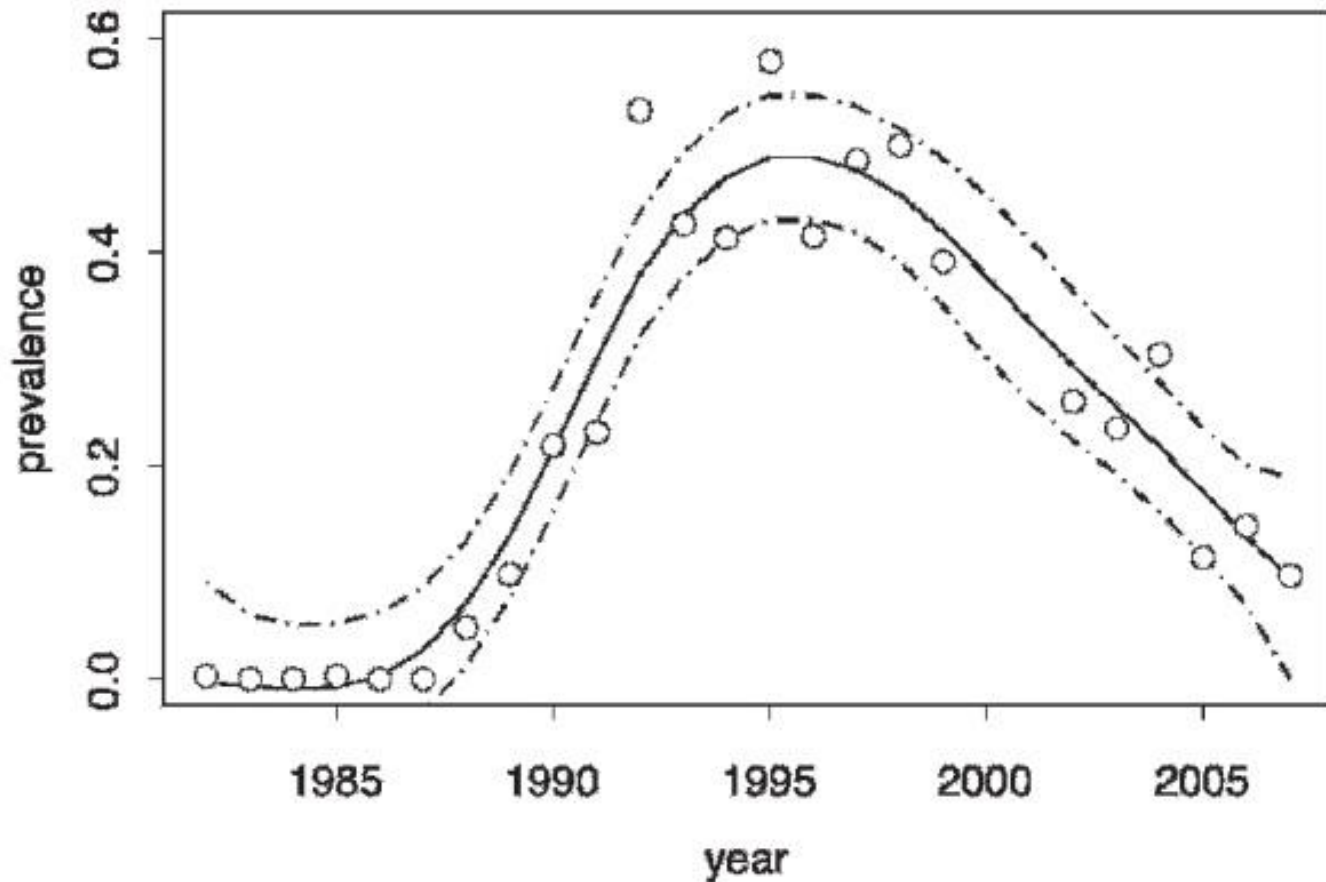


図2. 流行曲線の3段階

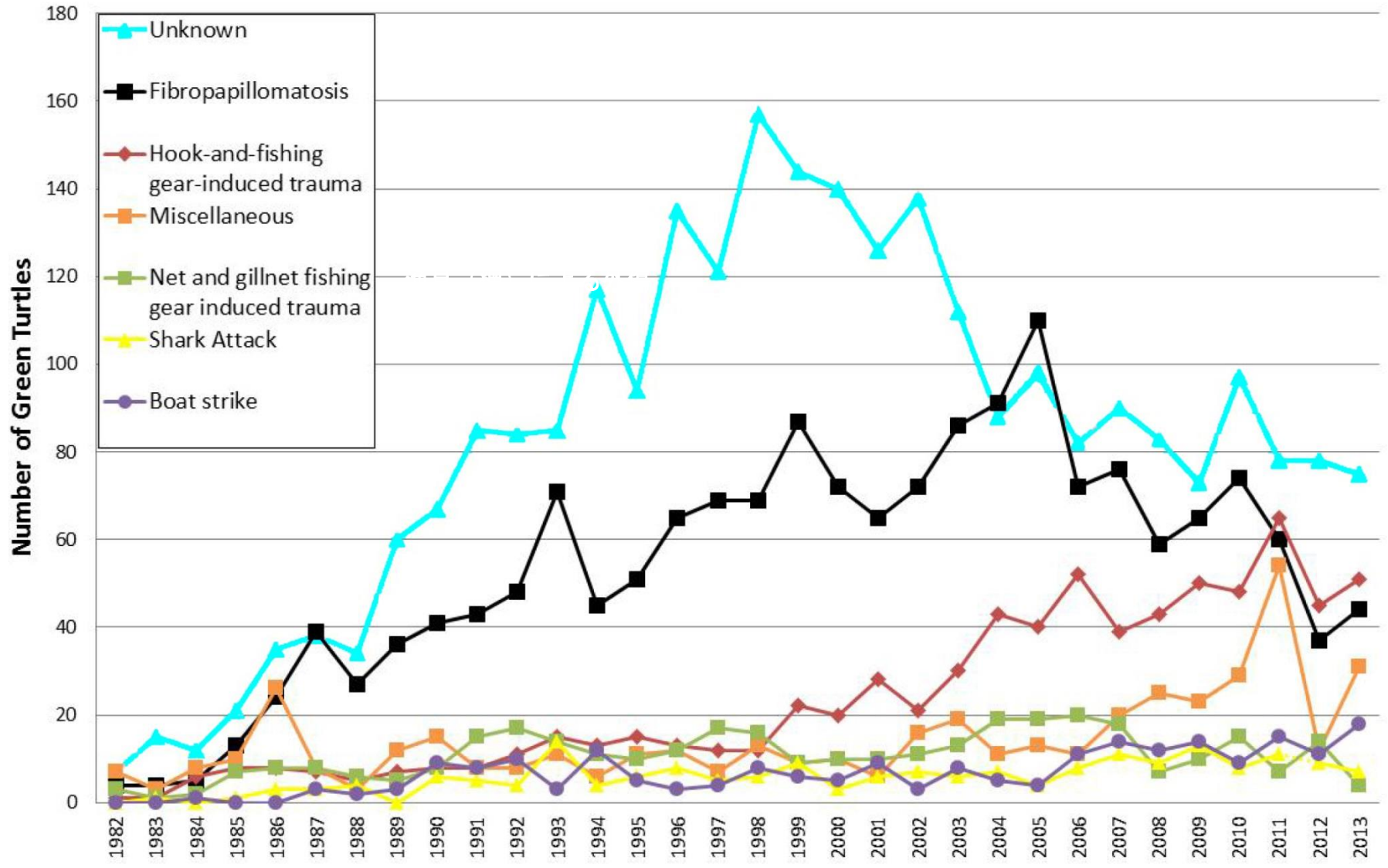
第一段階 (1988-1991) 急上昇期

第二段階 (1992-1998) ピーク期

第三段階 (1999-) 緩やかな下降期

Figure 5. Green turtle strandings from Main and Northwestern Hawaiian Islands by cause from 1982 through 2013.

1982-2013 全ハワイにおけるアオウミガメの漂着件数 (N=6346)

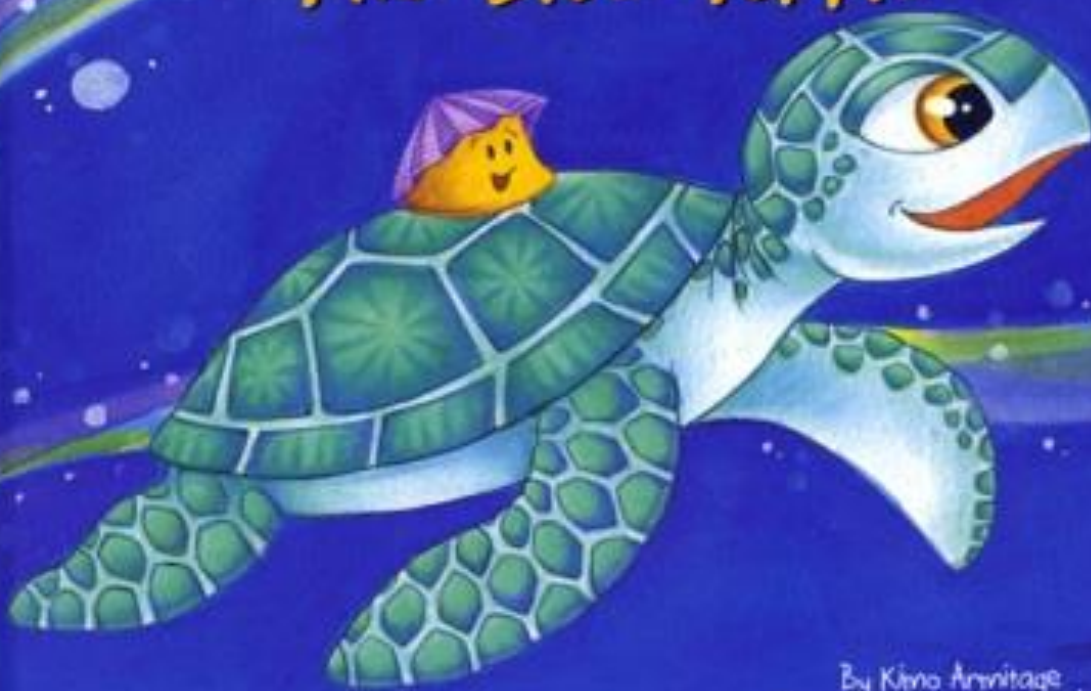




609

Limou

The Blue Turtle



By Kimo Armitage
Illustrated by Scott Kaneshiro


ISLAND HIGHTOPS

HONU *and* HINA

A Story of Coexistence



A Naturally Hawaiian Book
By Patrick Ching
and Friends





The coexistence of Honu and Hina is a story of the struggle for environmental justice among the people of a small Hawaiian island.

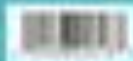
In the late nineteenth century, when most people on the island of Kauai had just begun to get rich, the missionaries, doctors, and government men began to see Honu as a pest. The Honu was a nuisance and had to be removed.

The government of Kauai made illegal Honu to live on the early 1970s, when the people learned that their special Honu could be used for a variety of medicines and other uses.

Today's young people will have to think hard to handle the issues of protection and conservation with cultural respect. It may be time to build a new law. The Honu is a special species and must be protected.

By Patrick Ching

Patrick Ching is an environmental justice activist and the author of *Honu and Hina: A Story of Coexistence*. He has written many books on Hawaiian culture including *The People of Honu* and *The Hawaiian People and the World of the World of Hawaii*. He lives in Honolulu, Hawaii.



HONU and HINA A Story of Coexistence

HONU and HINA

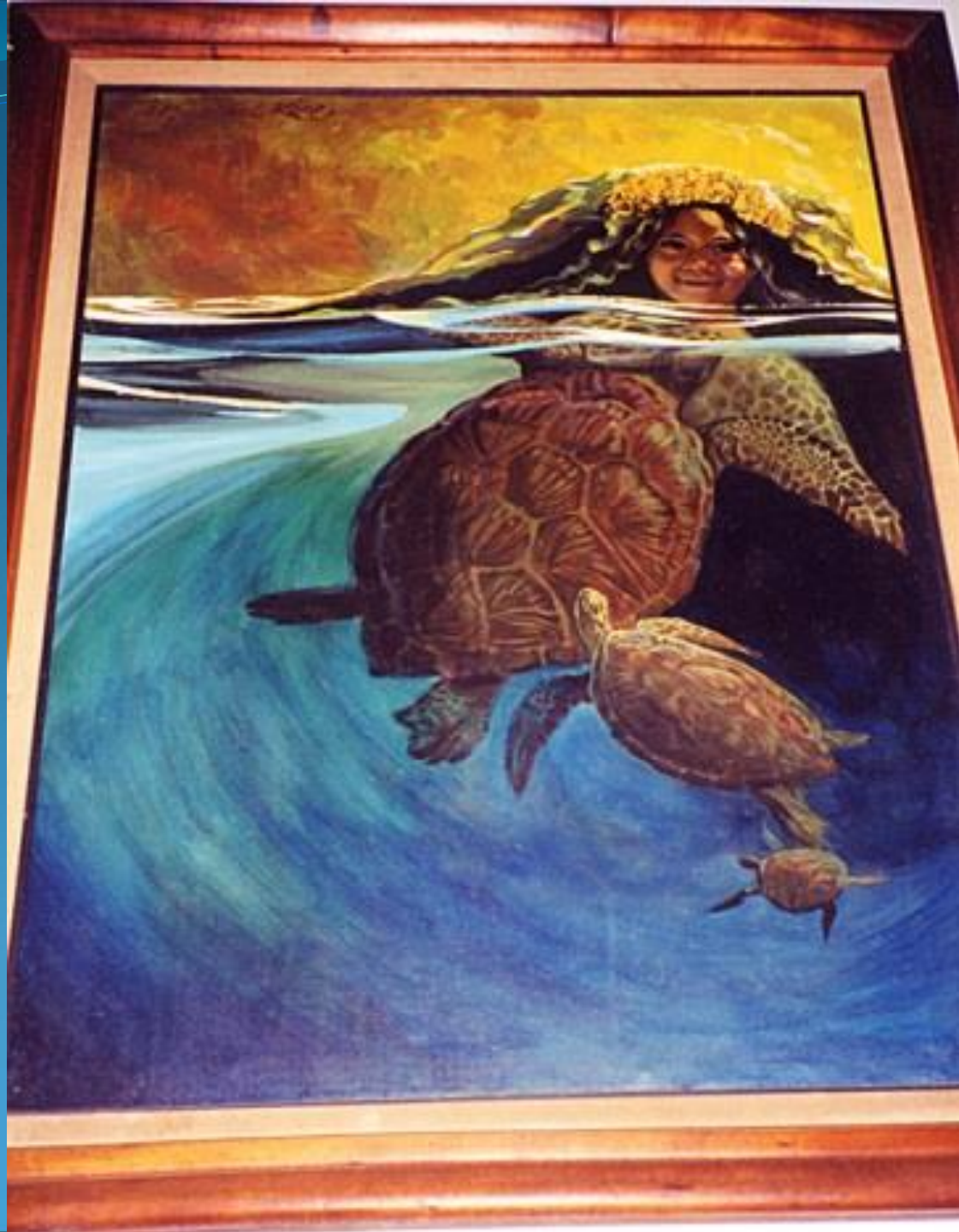
A Story of Coexistence



and A Naturally Hawaiian Book
By Patrick Ching
and Friends









Noel Morata Photography

















Tradition

傳統

Religion

宗教

Culture

文化



保全上の文化的配慮





金峰銀樓承製

國泰

安







赫濯神靈傳此極

東甲北極殿
甲午年元宵節
平安大米龜
16.8888斤



公北社
蔡氏宗

公北社
蔡氏宗

公北社
蔡氏宗

公北社
蔡氏宗

公北社
蔡氏宗

公北社
蔡氏宗

公北社
蔡氏宗

風調雨順

公北社
蔡氏宗







蕭江新田河頭

柯敬啟

西年瑞月吉

境安回
廠南
宮安保

白蓮聖母

白蓮聖母
靈水

境安回
廠南
宮安保

白蓮聖母





五峰山脈山寺
第六次重刻事蹟記

五峰山脈山寺第六次重刻事蹟記

五峰山脈山寺
第六次重刻事蹟記

五峰山脈山寺
第六次重刻事蹟記



1918
1988
1918
1988

李水雲
李水雲









Domon Clay Crests





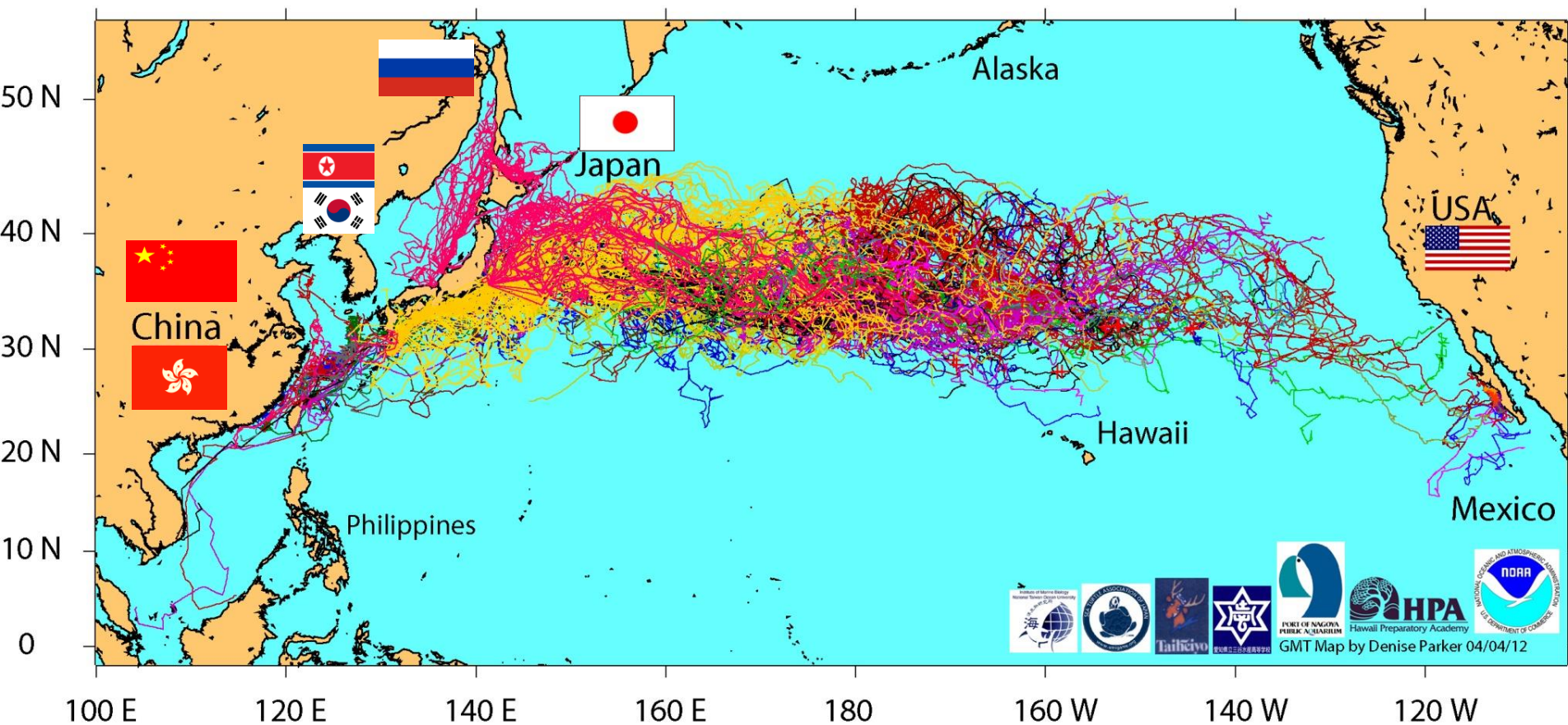
アカウミガメ

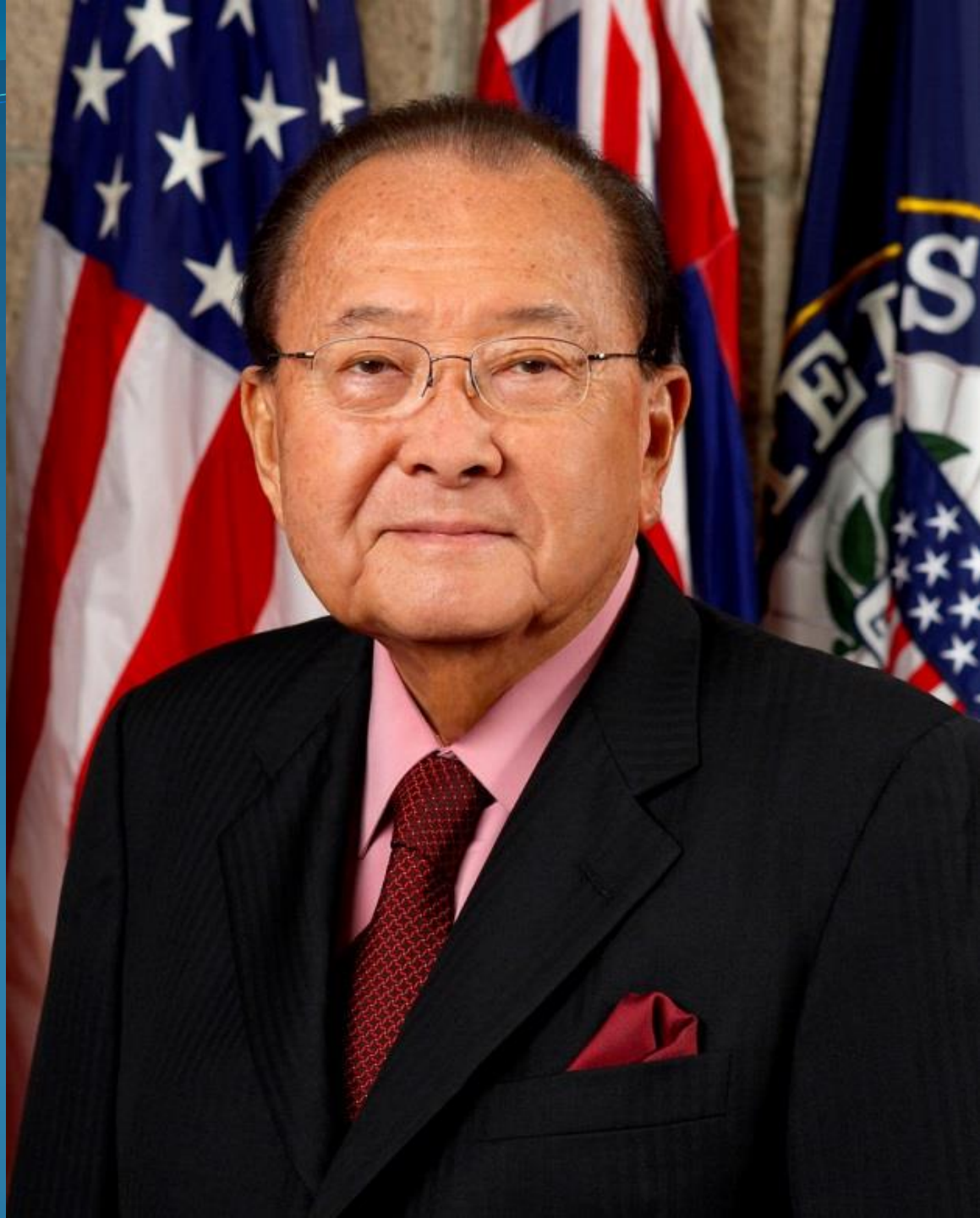


North Pacific Loggerhead

アカウミガメ (北太平洋個体群)

1997-2012 Satellite Tracking of Pelagic North Pacific Loggerheads

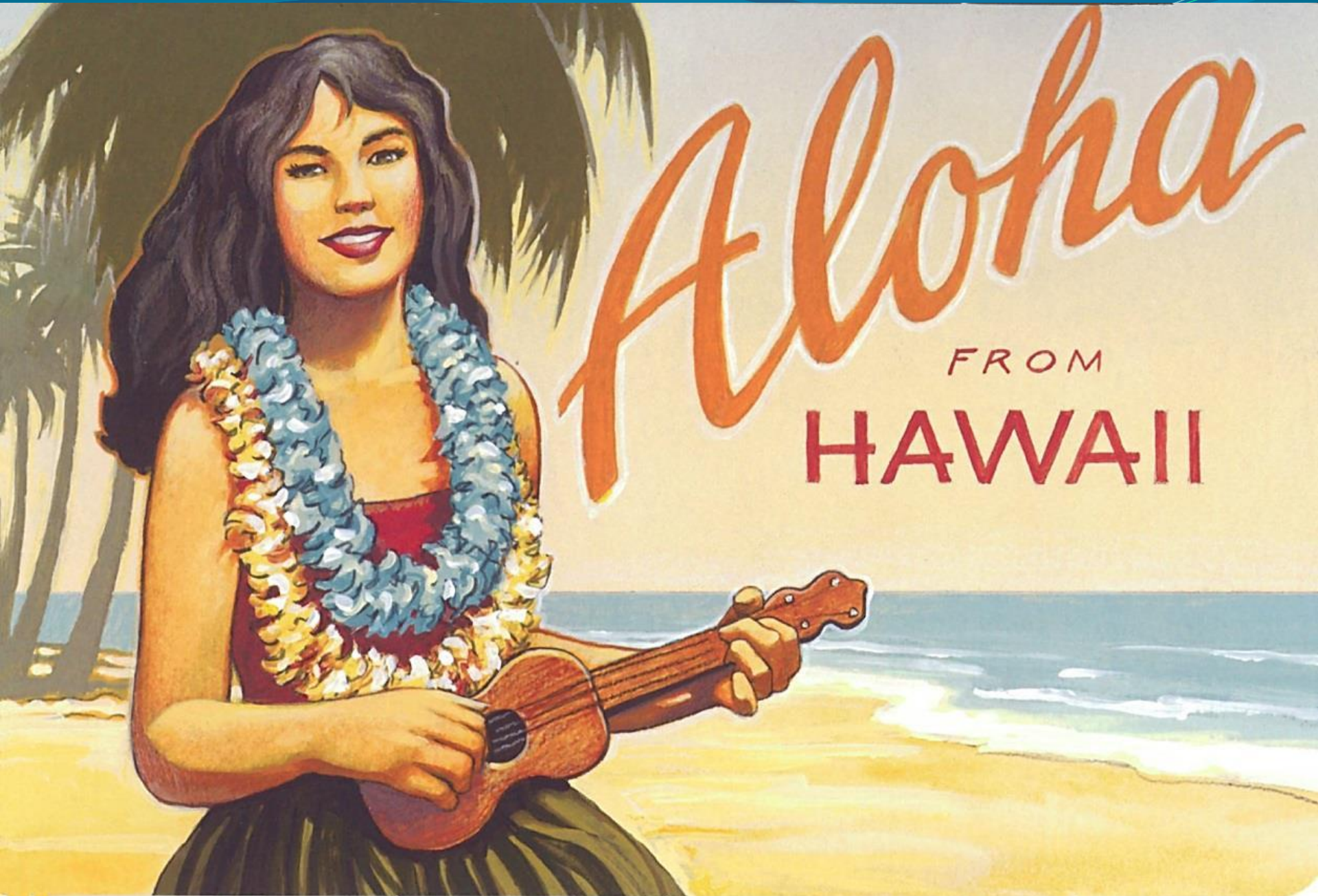






Of All The Things One Can Take
When Visiting a New Place
the Most Important is an
Open Spirit

初めての所を訪れた者に最も重要なのは
「開かれた心を持つ事」



Aloha

FROM

HAWAII