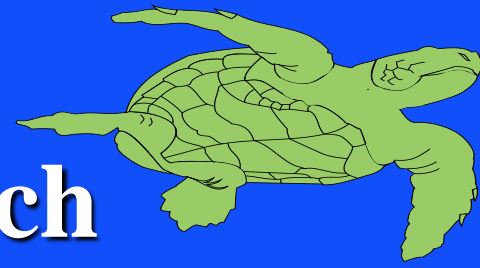


Protected Species

Marine Turtle Research

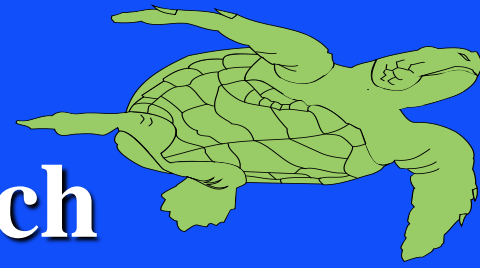


Overview of Marine Turtles in the Pacific

- **South Pacific - Oceania**
 - **Green turtles**
 - **Hawksbills**
- **North Pacific - Pelagic**
 - **Loggerheads**
 - **Leatherbacks**
 - **Olive ridleys**
- **Hawaii**

Protected Species

Marine Turtle Research



Overview of Marine Turtles in the Pacific

- **South Pacific - Oceania**

- **Green turtles**

- **Hawksbills**

- **North Pacific - Pelagic**

- **Loggerheads**

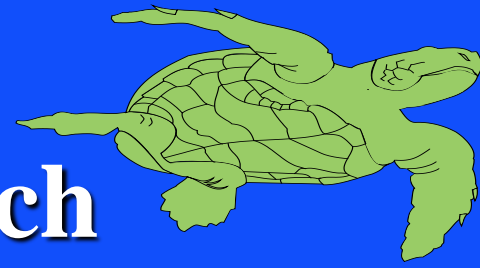
- **Leatherbacks**

- **Olive ridleys**

- **Hawaii**

Protected Species

Marine Turtle Research



Overview of Marine Turtles in the Pacific

○ South Pacific - Oceania

- Green turtles

- Hawksbills

○ North Pacific - Pelagic

- Loggerheads

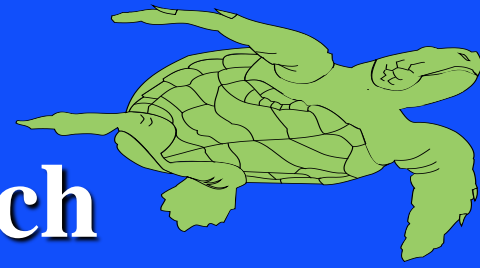
- Leatherbacks

- Olive ridleys

○ Hawaii

Protected Species

Marine Turtle Research



Overview of Marine Turtles in the Pacific

- **South Pacific - Oceania**

- **Green turtles**

- **Hawksbills**

- **North Pacific - Pelagic**

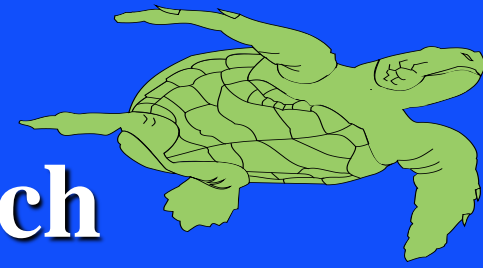
- **Loggerheads**

- **Leatherbacks**

- **Olive ridleys**

- **Hawaii**

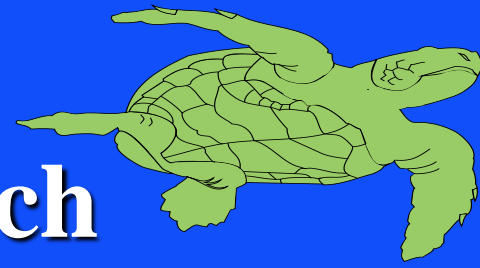
Protected Species Marine Turtle Research



Major Activities and Accomplishments:

- Nesting population trends
- Biology, ecology & life history
- Fibropapilloma pathology & etiology
- Fibropapilloma epidemiology

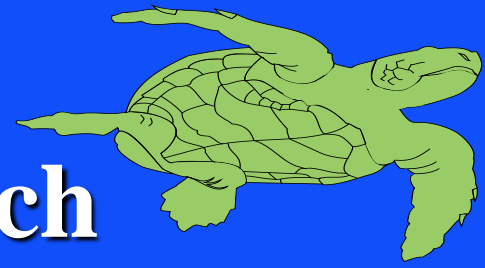
Protected Species Marine Turtle Research



Major Activities and Accomplishments:

- **Satellite tracking of Pacific migrations**
- **Technical assistance & coop. research**
- **U.S. Pacific Sea Turtle Recovery Plans**
- **Quantitative tools - TURTSIM**

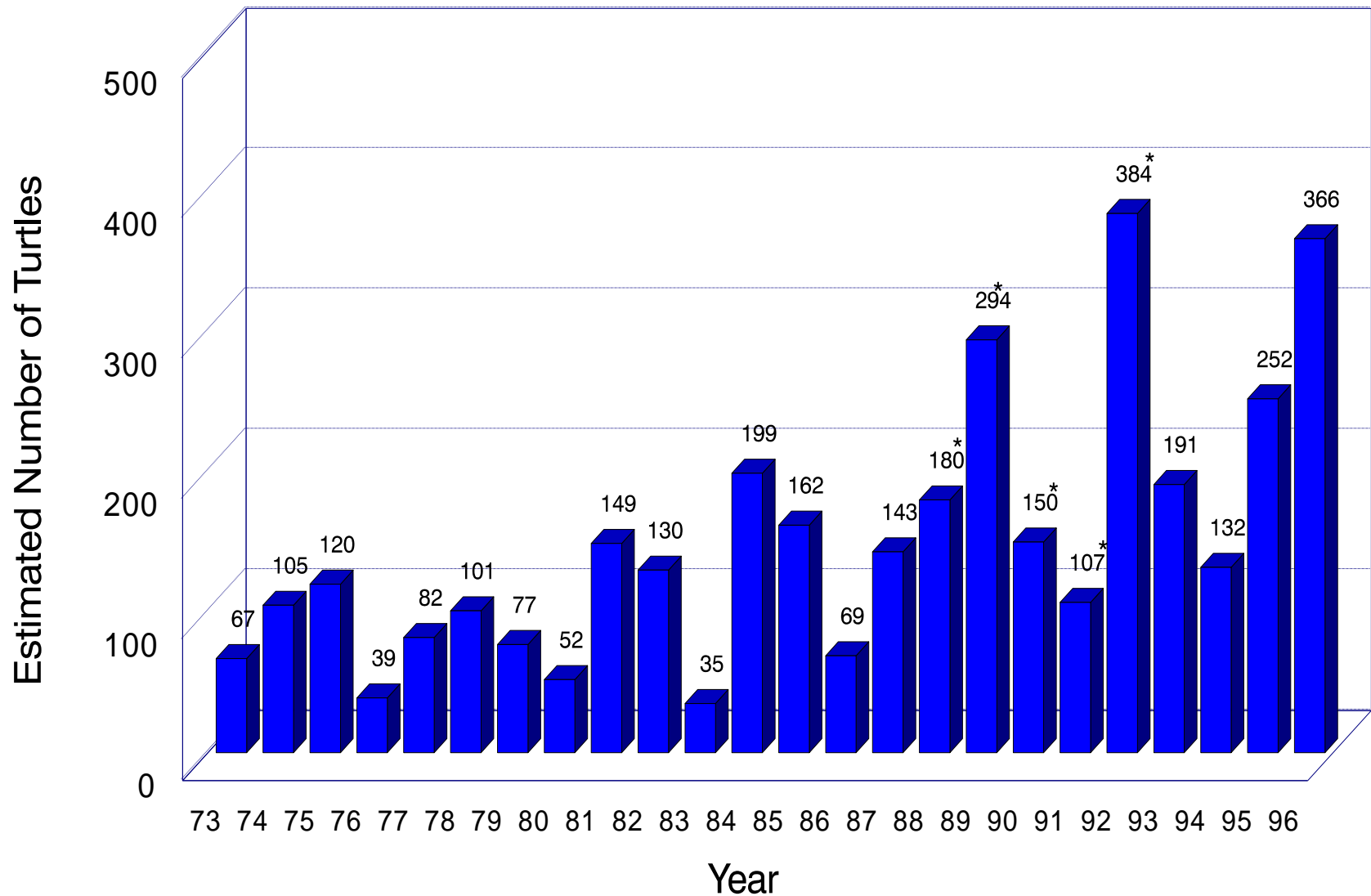
Protected Species Marine Turtle Research



Major Activities and Accomplishments:

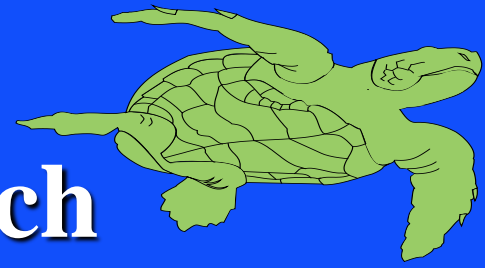
- **Nesting population trends**
- **Biology, ecology & life history**
- **Fibropapilloma pathology & etiology**
- **Fibropapilloma epidemiology**

Green Turtle Nesting at East Island, French Frigate Shoals, in the Northwestern Hawaiian Islands.



*Counts based on saturation tagging throughout the nesting season

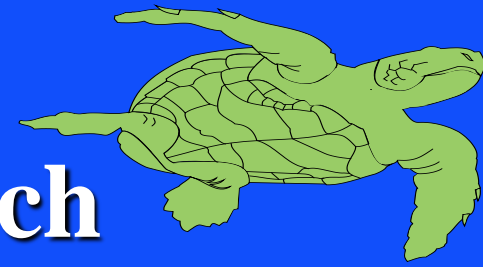
Protected Species Marine Turtle Research



Major Activities and Accomplishments:

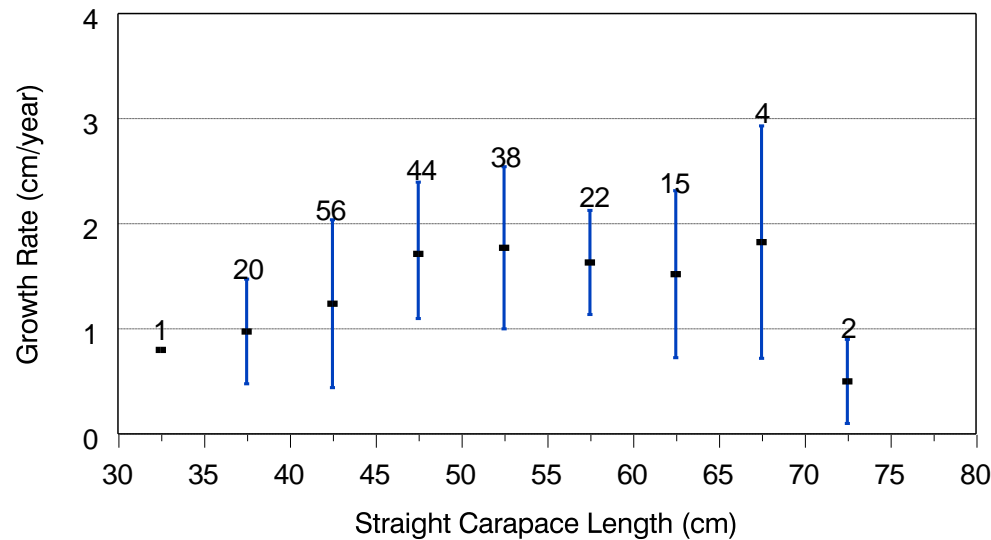
- Nesting population trends
- **Biology, ecology & life history**
- Fibropapilloma pathology & etiology
- Fibropapilloma epidemiology

Protected Species Marine Turtle Research

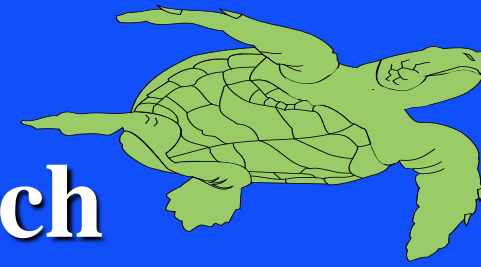


Growth Rates of Green Turtles at Kiholo Bay, Hawaii

N=202 Increments for 202 turtles

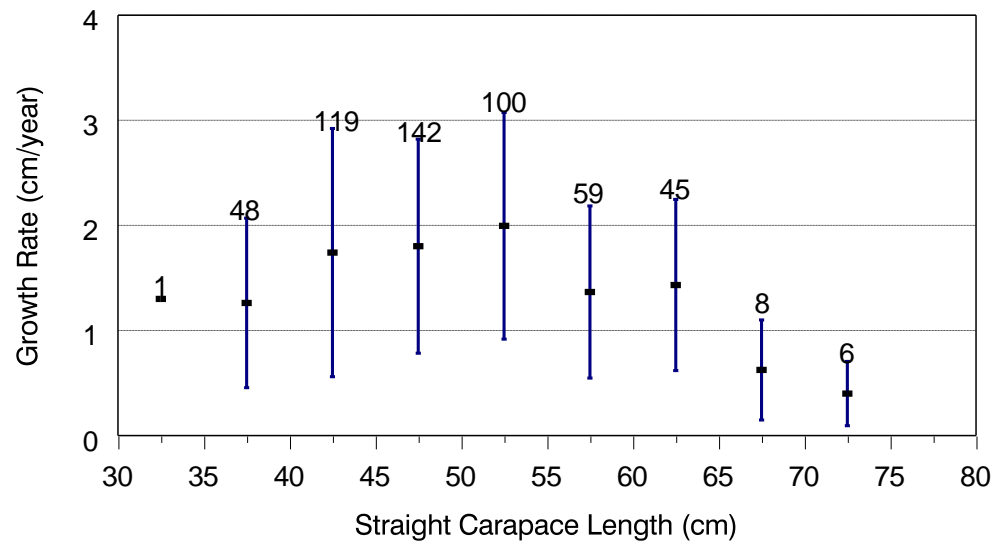


Protected Species Marine Turtle Research

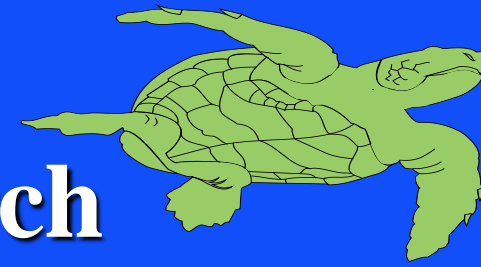


Growth Rates of Green Turtles at Kiholo Bay, Hawaii

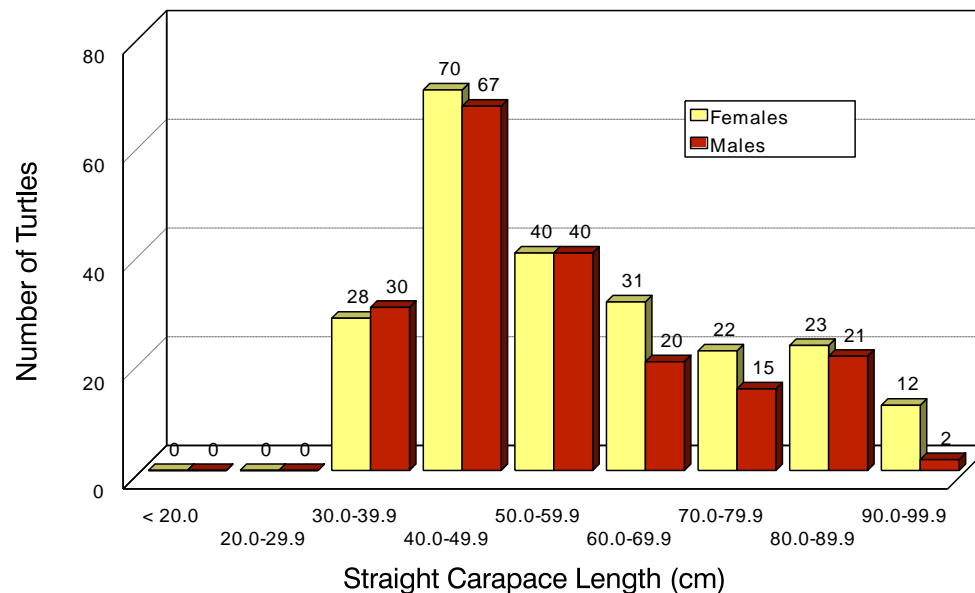
N=528 Increments for 202 turtles



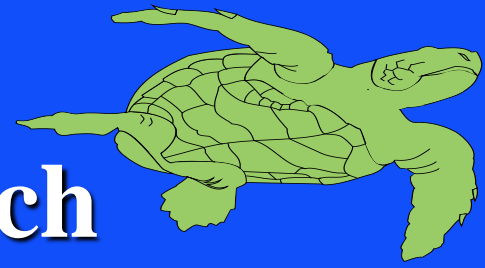
Protected Species Marine Turtle Research



DISTRIBUTION OF 421 FEMALE AND MALE
GREEN TURTLES BY 10 CM SIZE CLASSES
STRANDED IN THE HAWAIIAN ISLANDS



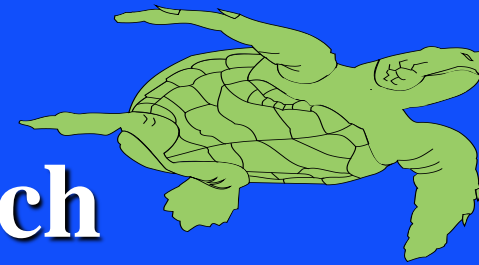
Protected Species Marine Turtle Research



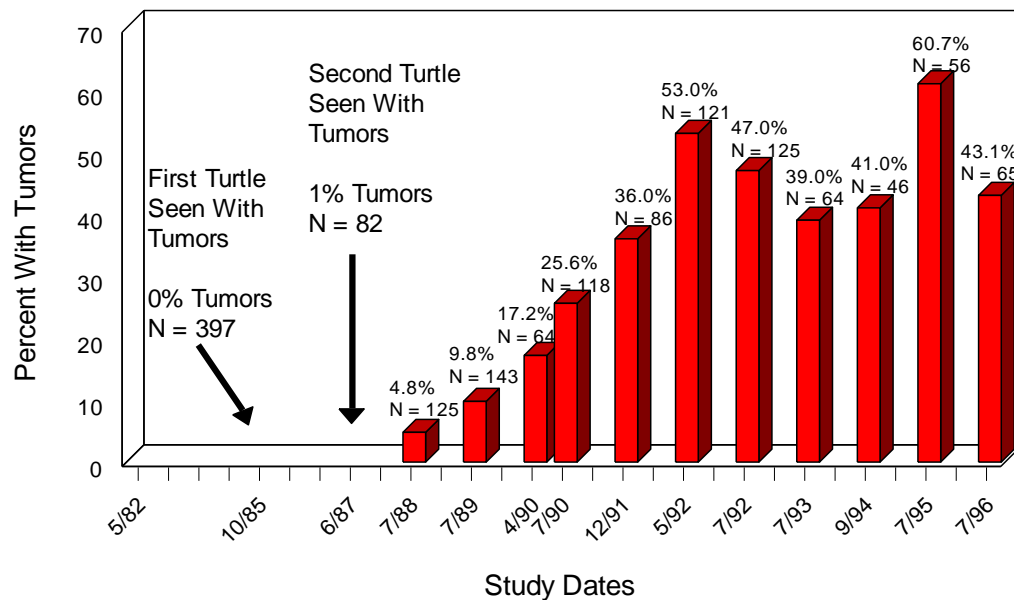
Major Activities and Accomplishments:

- Nesting population trends
- Biology, ecology & life history
- Fibropapilloma pathology & etiology
- Fibropapilloma epidemiology

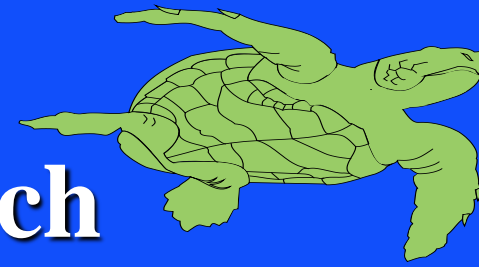
Protected Species Marine Turtle Research



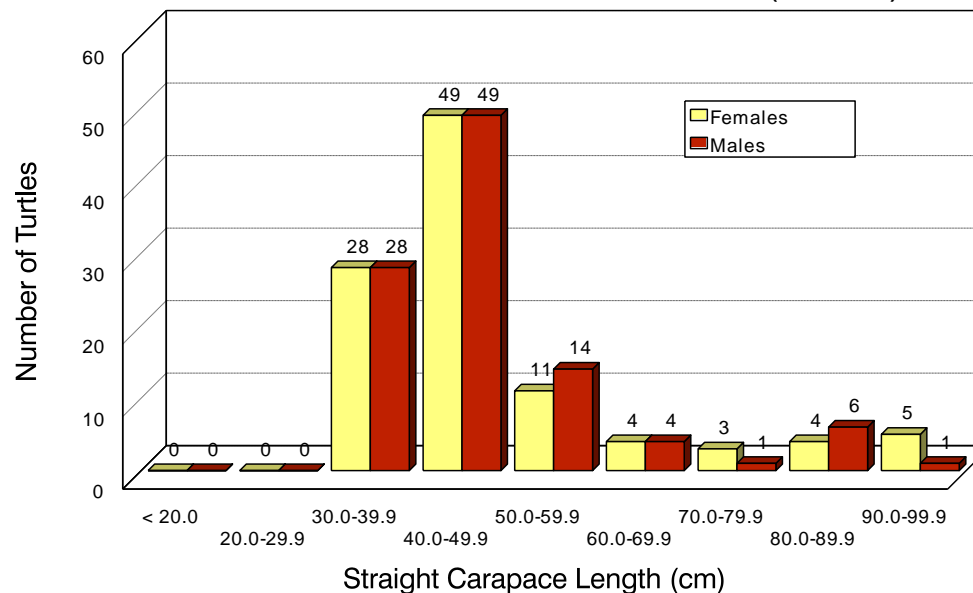
Tumor Incidence in Green Turtles in Nearshore Habitats Along the Southern Coast of Molokai



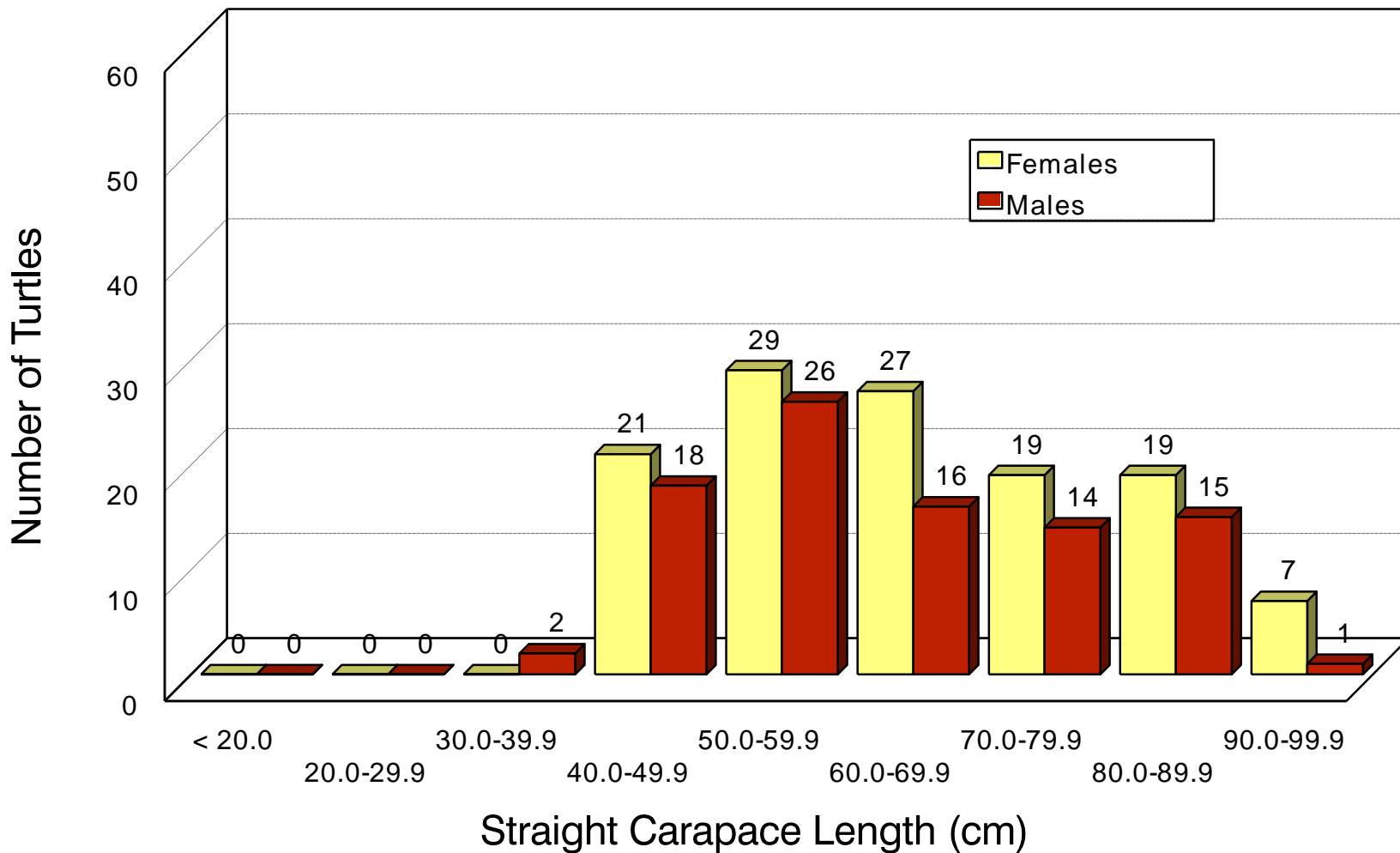
Protected Species Marine Turtle Research



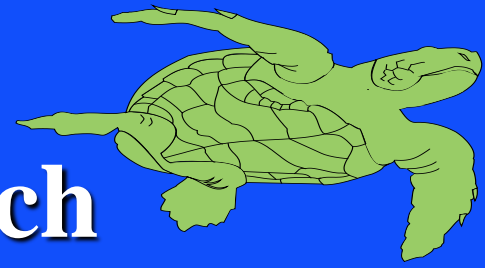
DISTRIBUTION OF NON-TUMORED FEMALE AND MALE GREEN TURTLES BY 10 CM SIZE CLASSES STRANDED IN THE HAWAIIAN ISLANDS (N=207)



DISTRIBUTION OF TUMORED FEMALE AND MALE GREEN TURTLES BY 10 CM SIZE CLASSES STRANDED IN THE HAWAIIAN ISLANDS (N=214)



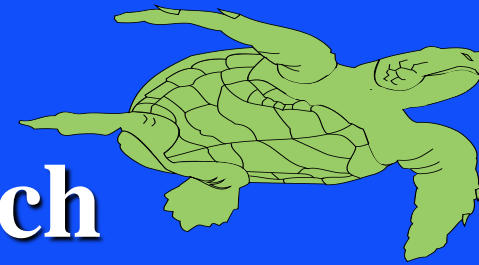
Protected Species Marine Turtle Research



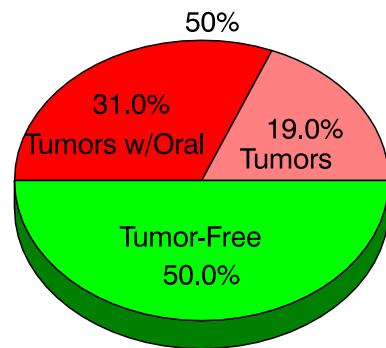
Major Activities and Accomplishments:

- Nesting population trends
- Biology, ecology & life history
- Fibropapilloma pathology & etiology
- Fibropapilloma epidemiology

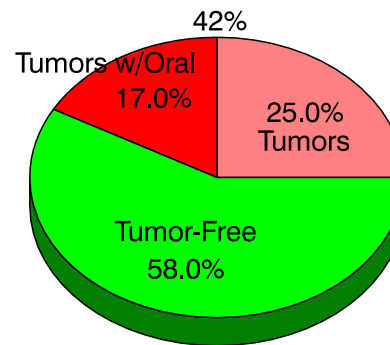
Protected Species Marine Turtle Research



Prevalence of Fibropapilloma Disease and Oral Tumors in the Hawaiian Islands, 1991 - 95



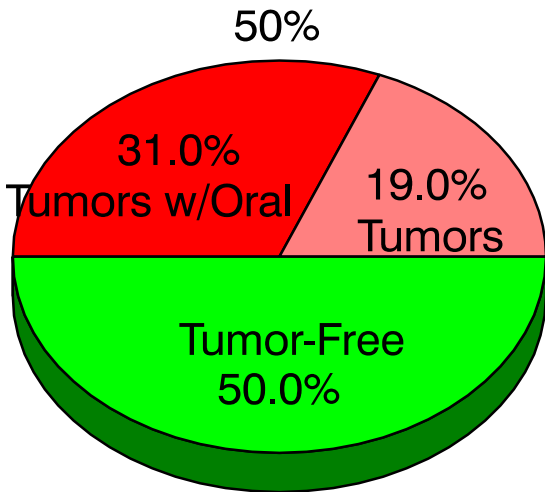
Turtles Necropsied
After Stranding
N = 442



Turtles Sampled
Alive in Kaneohe Bay
N = 561

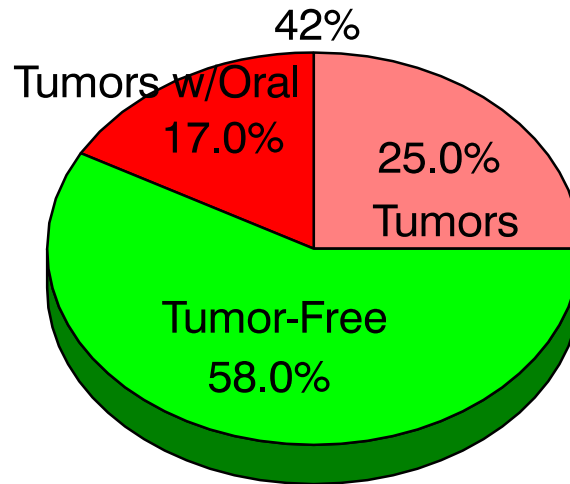
Prevalence of Fibropapilloma Disease and Oral Tumors in the Hawaiian Islands and Florida

Hawaii



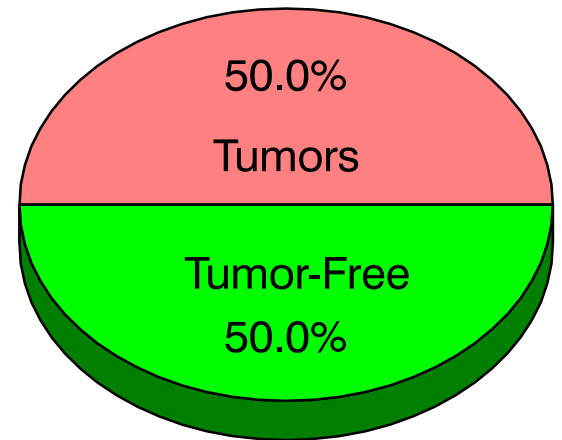
Turtles Necropsied
after Stranding
1991 - 1995
N=442

Hawaii



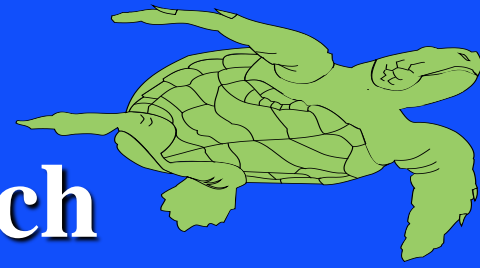
Turtles Sampled Alive in
Kaneohe Bay
1991 - 1995
N = 561

Florida



Turtles Sampled Alive in
Lagoonal Habitats

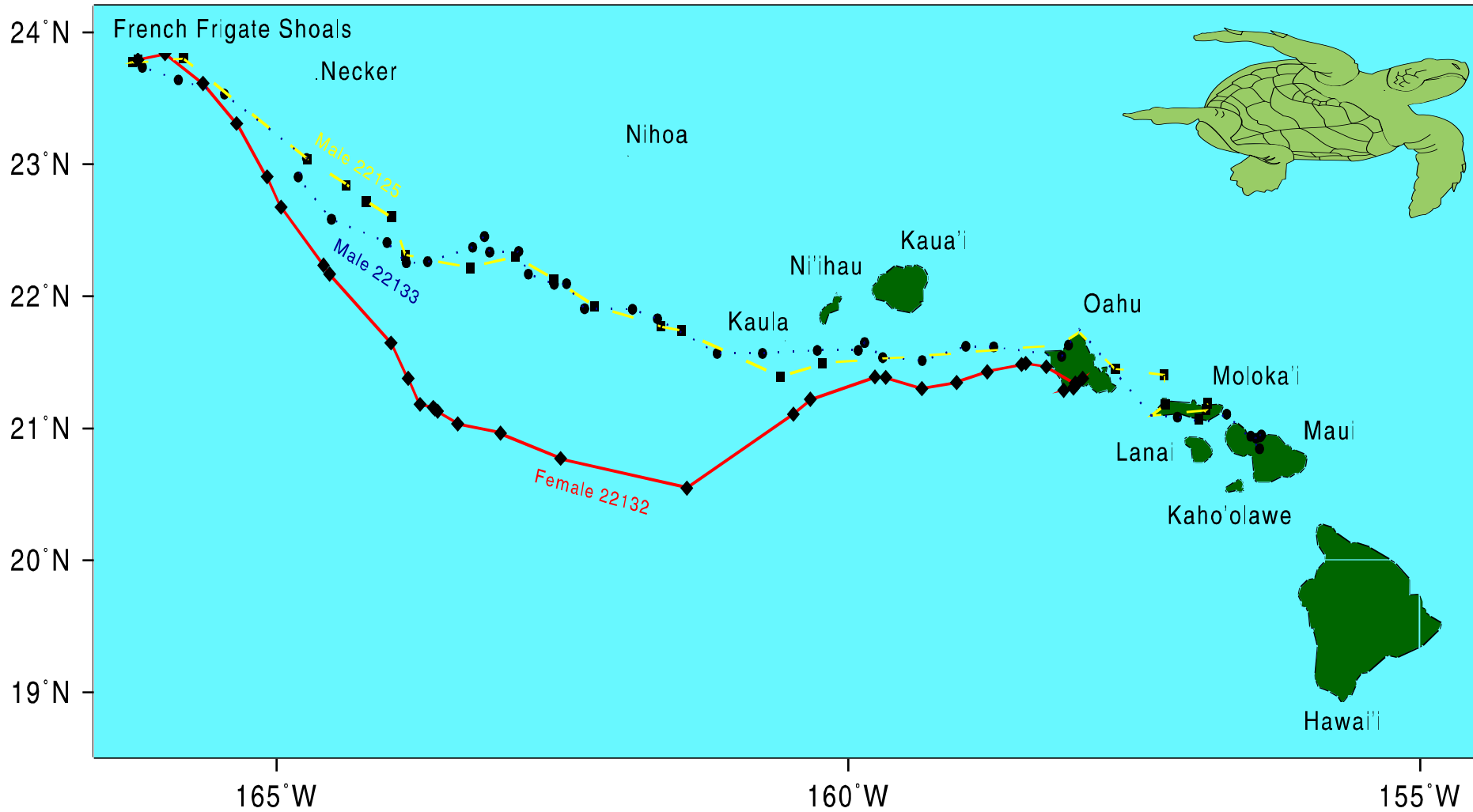
Protected Species Marine Turtle Research



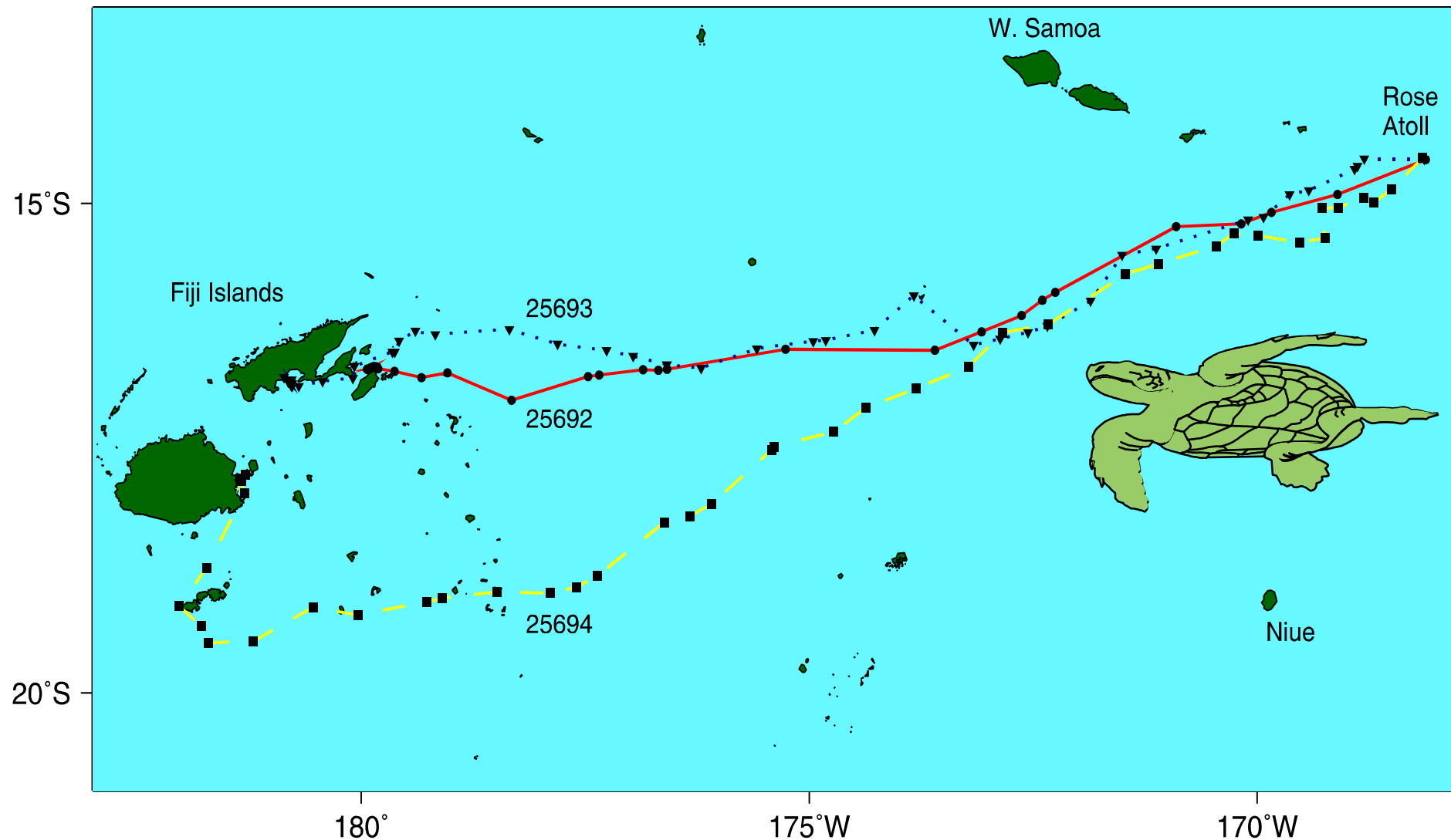
Major Activities and Accomplishments:

- **Satellite tracking of Pacific migrations**
- **Technical assistance & coop. research**
- **U.S. Pacific Sea Turtle Recovery Plans**
- **Quantitative tools - TURTSIM**

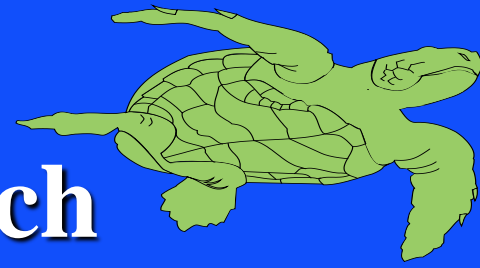
Post-reproductive Migratory Routes of Adult Male and Female Green Turtles from French Frigate Shoals to the Main Hawaiian Islands



Post-nesting Migrations of Green Turtles from Rose Atoll, American Samoa to Fiji, 1995-96



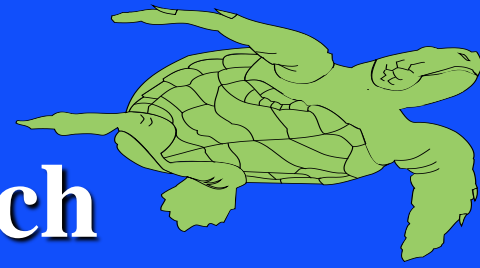
Protected Species Marine Turtle Research



Major Activities and Accomplishments:

- **Satellite tracking of Pacific migrations**
- **Technical assistance & coop. research**
- **U.S. Pacific Sea Turtle Recovery Plans**
- **Quantitative tools - TURTSIM**

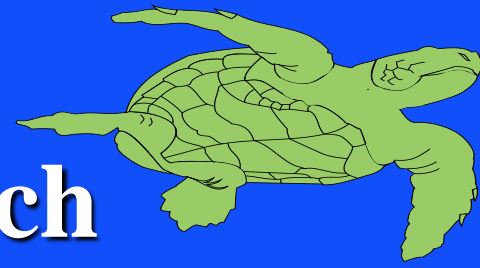
Protected Species Marine Turtle Research



Major Activities and Accomplishments:

- **Satellite tracking of Pacific migrations**
- **Technical assistance & coop. research**
- **U.S. Pacific Sea Turtle Recovery Plans**
- **Quantitative tools - TURTSIM**

Protected Species Marine Turtle Research



Major Activities and Accomplishments:

- **Satellite tracking of Pacific migrations**
- **Technical assistance & coop. research**
- **U.S. Pacific Sea Turtle Recovery Plans**
- **Quantitative tools - TURTSIM**