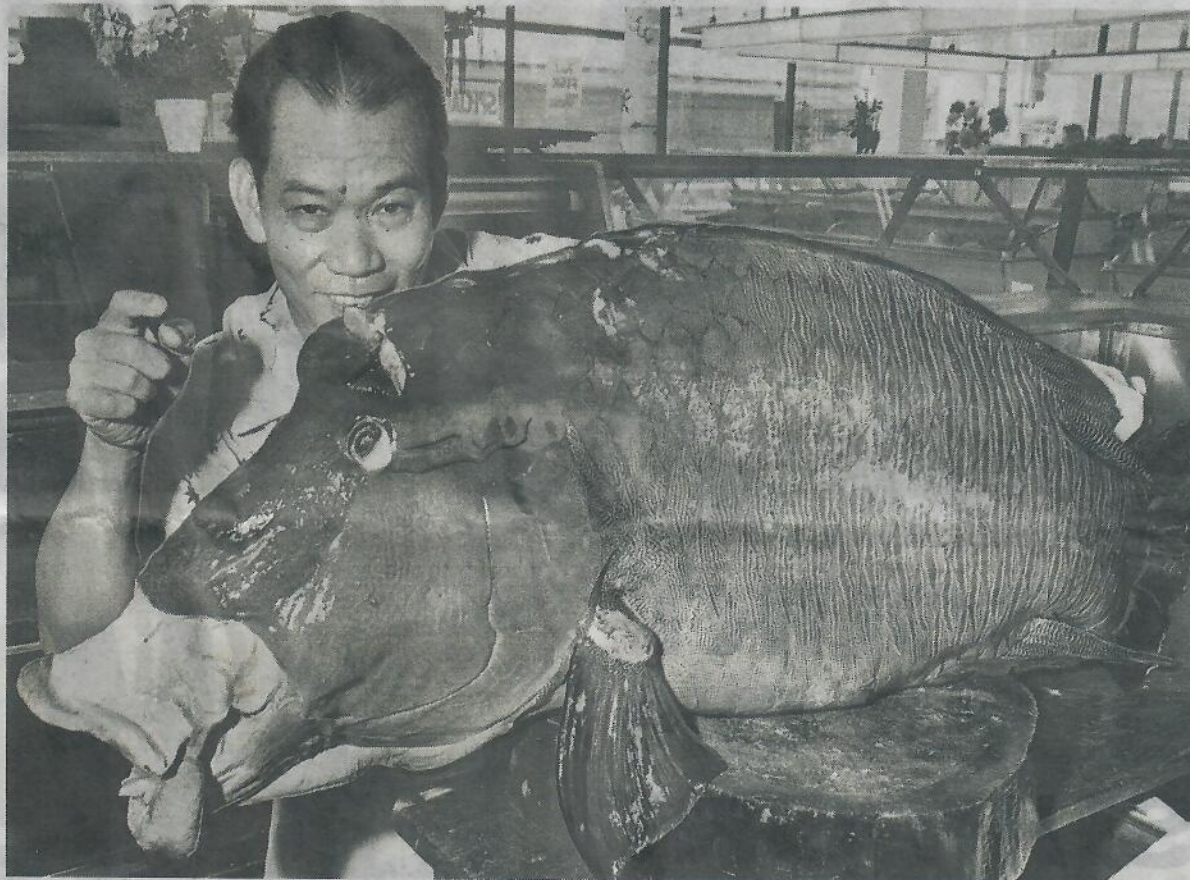


Back in the day: 7/12/67



STAR-ADVERTISER ARCHIVE

Eddie Pang stands next to a 64-pound fish at Aala market. The fish has been identified as a giant hinalea. It's a member of the wrasse family, according to Spencer Tinker, Waikiki Aquarium director. He said it's a shoreline fish that grows up to 7 feet long. This one was about 3-1/2 feet long. University of Hawaii scientists at Coconut Island will get samples to determine whether it's poisonous.