

▼
**GUIDE TO
O'AHU'S**

NORTH SHORE

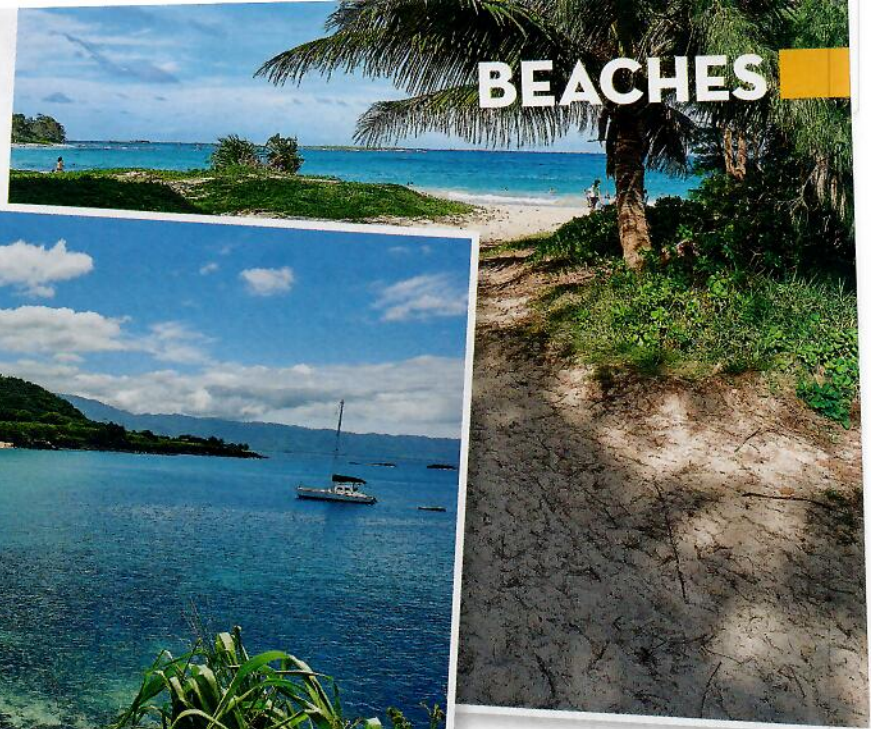
Famous worldwide for its large winter swells, the North Shore isn't just a destination for surfers. The laid-back beach community is made up of many towns, each having their own distinct charm and appeal, with tons of things to do—and let's not forget the food. Whether you're looking for beaches, outdoor activities, an açai bowl or dream about watching a North Shore surf contest, you'll find everything you need packed into this handy guide full of our recommendations.

Mokulē'ia Beach Park

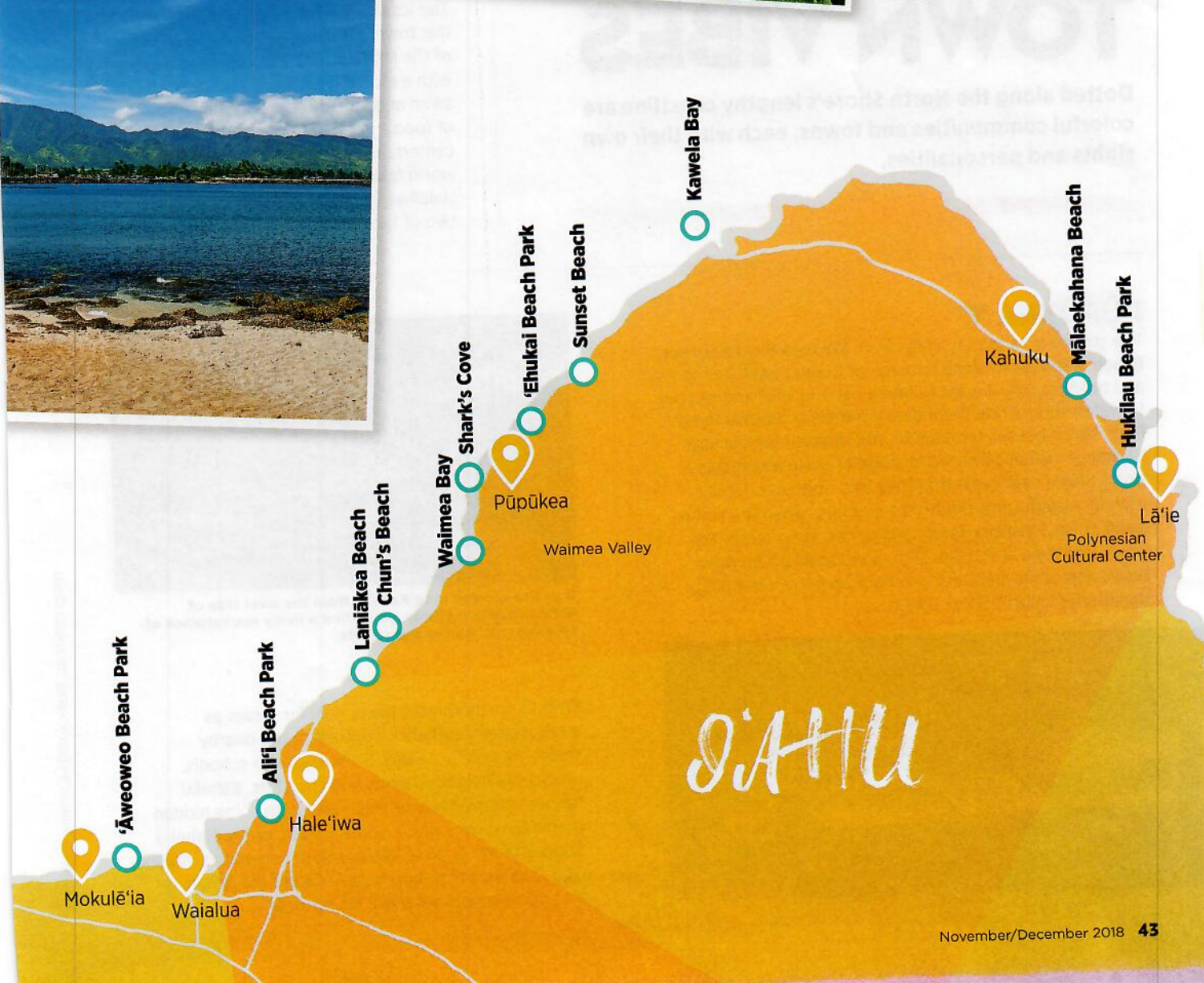
DAVID CROK-FORD, ZHUZHU/GETTY, ELENA BRAGG

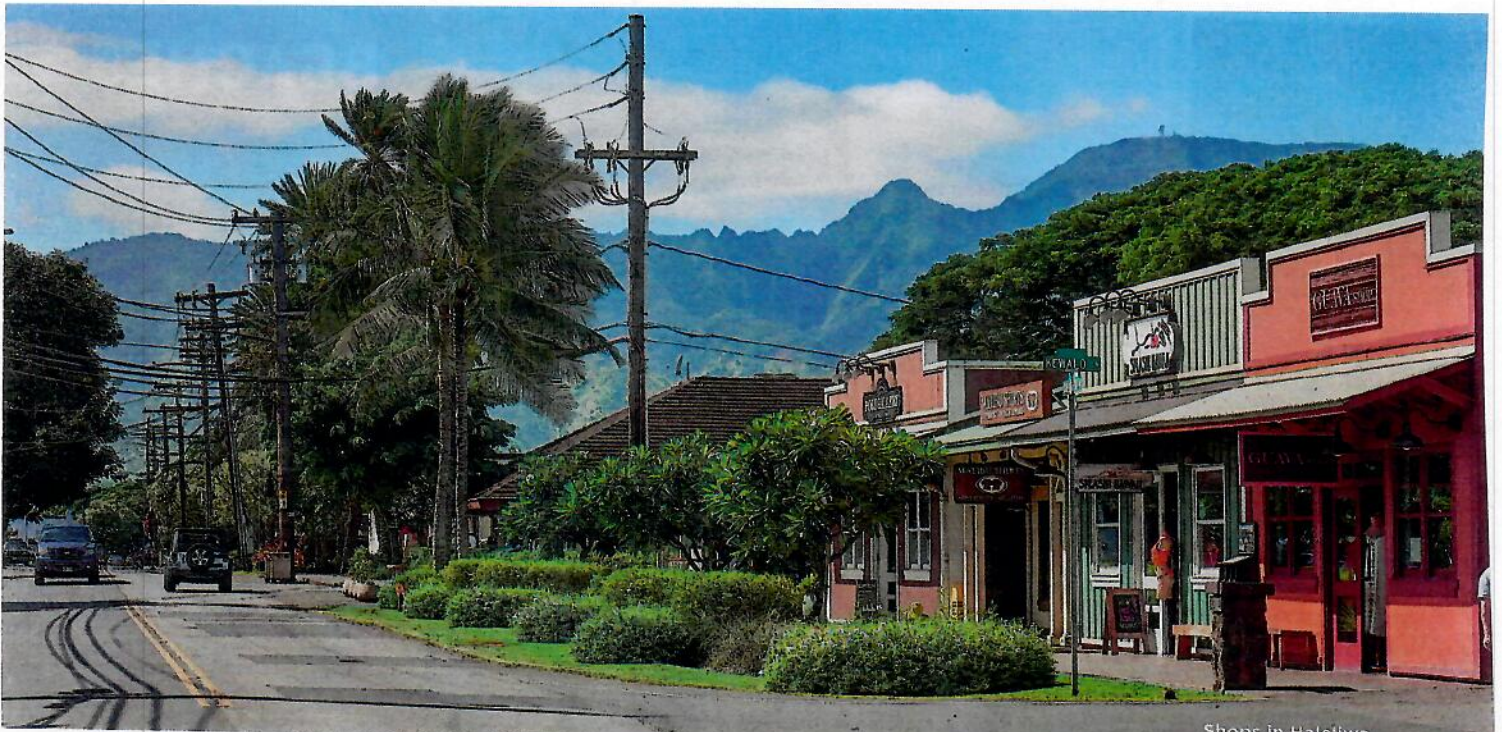
Ka'ena Point State Park

BEACHES



FROM LEFT: Sunset Beach, Shark's Cove, Laniākea Beach, Ali'i Beach Park, Waimea Bay and Hukilau Beach Park.





Shops in Hale'iwa

TOWN VIBES

Dotted along the North Shore's lengthy coastline are colorful communities and towns, each with their own sights and personalities.

HALE'IWA ▲

The iconic Hale'iwa signs welcome you to this town, often regarded as the epicenter of the North Shore. Its busy streets are lined with a mix of local mom-and-pop shops, swim and surf shops, restaurants, rows of food trucks, boutiques and shopping centers. This is where you'll also find the world famous Matsumoto Shave Ice. Tip: Hale'iwa Harbor and Ali'i Beach Park are two of the best places to watch the sunset.

PŪPŪKEA ▼

The stretch of land that spans from Waimea Bay to Sunset Beach, Pūpūkea is home to many of O'ahu's best surf spots and beaches. You'll want to find a parking spot and get out to watch surfers ride the massive barrels at 'Ehukai Beach Park, which houses the famous surf breaks Pipeline and Backdoor. (What some visitors don't realize about these North Shore beaches is that they also double as family-friendly playgrounds during the summer, when the surf is small to flat.) Visitors, locals and surfers right out of the water converge at Pūpūkea Foodland to fill up on *poke* bowls and other grab-and-go snacks before continuing their perfect North Shore beach day.



'Ehukai Beach Park



If you're coming in to Kahuku from the west side of Kamehameha Highway, you'll find a lively marketplace of colorful food trucks and stands.

KAHUKU ▲

O'ahu's northernmost town, Kahuku serves as a refreshingly authentic contrast to the nearby resort area of Turtle Bay. Brimming with schools, residential neighborhoods and churches, Kahuku has an undeniable local feel, filled with some hidden gems. Giovanni's Aloha Shrimp truck, or the Kahuku Superette for its *poke*, are absolute necessities. Kahuku Golf Course, a nine-hole course facing the ocean, is also popular with travelers on a budget.

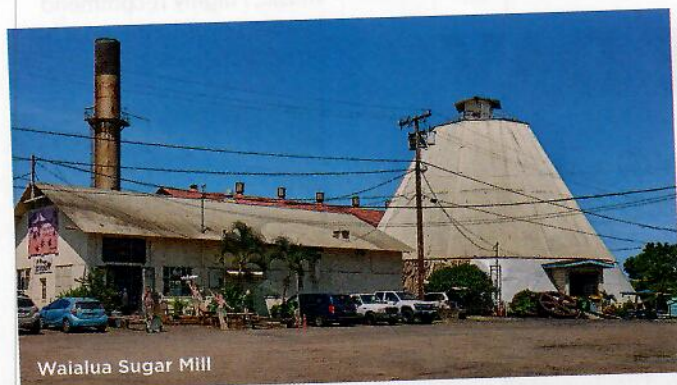
DAVID CROXFORD, TROPICALPINSINGAPORE & PGJAM/GETTY

MOKULĒ'IA ▶

Isolated on the far west side of the North Shore, Mokulē'ia is a quiet seaside district with a beach park that probably has more turtles relaxing on the sand than people. Continue your drive west and you might see skydivers descending near Dillingham Ranch, where Hawai'i Polo Club's seasonal matches are held. Want to go on a hike? Leave your car at the Ka'ena Point trailhead and wander past remote beaches to O'ahu's westernmost point.



Mokulē'ia Beach Park



Waialua Sugar Mill

WAIALUA ◀

Not nearly as busy as Hale'iwa, its bustling neighbor, Waialua is a vestige of Hawai'i's sugar plantation era that has seen a new wave of chic cafés and eclectic boutiques opening on its country streets. We recommend the hip coffee shop, Brew + Foam, which serves delicious frappés and lattes in its small, stylishly designed space, and making a stop at the old Waialua Sugar Mill. The mill is home to some of the world's best surfboard shapers, but if you're not looking for a surfboard, don't fret—there's also a soap factory, general store and farmers market to check out.



LĀ'IE ◀

There's a lot packed into the small, laid-back coastal community of Lā'ie. It's a country town with two-lane roads and side streets leading to some of the island's best beaches, however, you'll also find the only movie theater on the North Shore, Lā'ie Palms Cinema, as well as the Polynesian Cultural Center. Because it is a Mormon-dominated community, many of the stores and restaurants may be closed on Sundays—and liquor here is nowhere to be found. —Kevin Allen

The Lā'ie Hawai'i Temple was first opened in 1919 and allows the public to check out its expansive temple grounds.



Guava Shop

2:22 p.m.

► **Hit the beach**

Waimea Bay

(61-31 Kamehameha Hwy.)

"Waimea Bay will forever have my heart when it comes to lying out and swimming. On a good day, the water is as blue and clear as diamonds!"

5:34 p.m.

► **Grab a cocktail**

Turtle Bay Resort

(57-091 Kamehameha Hwy.)

"If you're feeling tropical and want the best mai tai on the island accompanied by a beautiful view of the ocean, and on some nights live music, I highly recommend heading over to the pool bar at Turtle Bay Resort."

ONE PERFECT DAY

An international model, Mahina Garcia possesses the savoir faire to know where the cool spots are in the fashion capitals of the world, from L.A. to Sydney, but deep down she's a *wahine* (woman) from the North Shore. The Native Hawaiian beauty was raised in Hale'iwa, and shares her perfect day in the country.



7:30 a.m.

► **Order an açai bowl**

Hale'iwa Bowls

(66-030 Kamehameha Hwy.)

"It's hands down my favorite place to get an açai bowl. I was one of Hale'iwa Bowls' first employees when my friend, Sam, first opened it, so it's been beautiful watching it grow."

8 a.m.

► **Swim with sharks**

Island View Hawai'i

(66-105 Kamehameha Hwy.)

"I tell everyone that they have to book themselves on the Island View Shark Tour located in the Hale'iwa Boat Harbor. It's a life-changing experience. Island View is owned and operated by the most knowledgeable and trustworthy local ocean men on the North Shore of O'ahu. It is surprisingly the most relaxing, yet exciting experience and I highly recommend it."

10:20 a.m.

► **Go for brunch**

Waialua Bakery

(66-200 Kamehameha Hwy.)

"I've been going to this family-owned bakery since I was in elementary school. It's a very relaxed environment, no slippers needed kind of vibe, plus it's the best post-surf spot."

11:55 a.m.

► **Browse a boutique**

Guava Shop

(66-111 Kamehameha Hwy.)

"The Guava Shop located in the newly renovated shopping center always has great finds, whether you are looking for a gift for a friend or something personal."



7:11 p.m.

► **Time for Thai**

The Elephant Shack

(66-145 Kamehameha Hwy.)

"We like to wear comfortable clothes, drink wine and eat delicious Thai food in this amazing mellow mood, BYOB setting." —Daniel Ikaika Ito



DAVID CROXFORD, COURTESY OF ISLAND VIEW HAWAII; TURTLE BAY RESORT

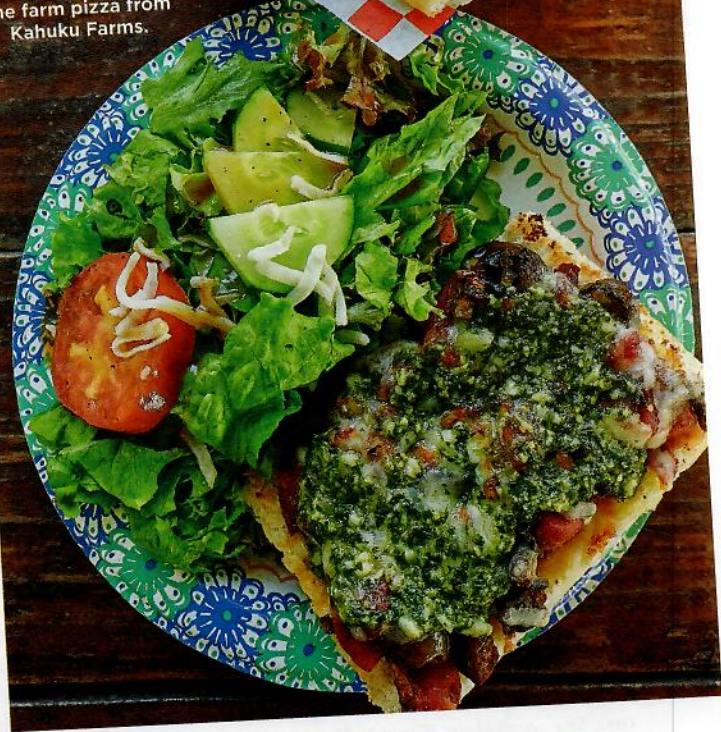
WHERE TO EAT

Food finds located around every sand-covered country corner.

FOR BREAKFAST, a visit to **Café Hale'iwa** is a must. The North Shore staple has been serving generous portions of American cuisine to salt-crusted early morning surfers since it first opened in 1982. And though its traditional breakfast platters are good, the real winner here is the café's desert Belgian waffles. 66-456 Kamehameha Hwy., Hale'iwa, (808) 637-5516, cafehaleiwa-hawaiianislands.com. Another breakfast option, **Kono's Hale'iwa** turns out packed, juicy breakfast burritos at a breakneck pace. Its succulent *kālua* pig is also what keeps customers returning again and again, and after one bite, you'll understand why. *Various locations*, (808) 637-9211, konosnorthshore.com. For lunch or dinner, **Hale'iwa Beach House**, formerly Jameson's by the Sea, blends its country, open-air aesthetic with fine dining. The Australian rack of lamb, served with butter poached potatoes, roasted carrots and red pepper chimichurri, is a standout

on the dinner menu. 62-540 Kamehameha Hwy., Hale'iwa, (808) 637-3435, haleiwabeach-house.com. Pizza fans will want to check out the colorful food truck of **Impossibles Pizza**, selling some of the best slices of gooey, cheesy, garlicky pizza on the North Shore. Be warned: It will take two to three hungry eaters to finish one pie. 59-776 Kamehameha Hwy., Pūpūkea, (808) 462-8290. Just up the road, **Pūpūkea Grill** is a casual sit-down restaurant popular with the residents. Here you'll find all the local favorites, such as its 'ahi loco moco plate lunch or spicy tuna bowl. 59-680 Kamehameha Hwy., Hale'iwa, (808) 779-7943, pupukeagrill.com. One town over, **Kahuku Farms** has an outdoor bistro with menu items such as mango iced tea and the farm pizza, tomato-eggplant bruschetta topped with mozzarella and basil mac nut pesto that are fresher than fresh. 56-800 Kamehameha Hwy., Kahuku, (808) 293-8159. For dessert, pick up a pie from **Ted's Bakery** near Sunset Beach, but

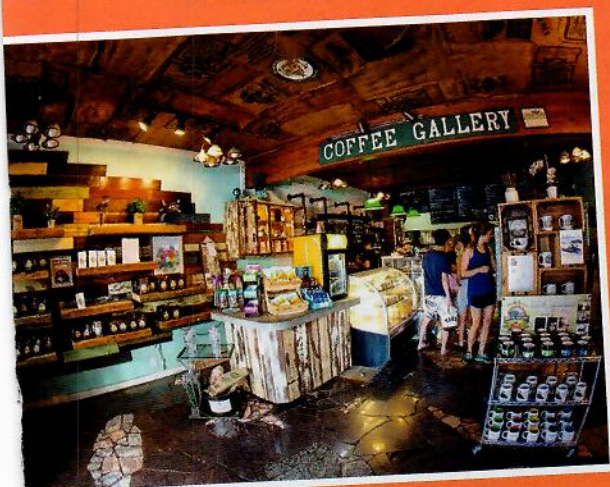
Garlic bread and the farm pizza from Kahuku Farms.



know that there's more to find here than just sweet, doughy treats. For the uninitiated, try the breakfast, burgers and plate lunches on the menu. 59-024 Kamehameha Hwy., Pūpūkea, (808) 638-8207, tedsbakery.com. An end-your-day-here kind of spot, **Lei's Bar and Grill** is one of

the few restaurant-bars on the North Shore. Before hitting up the extensive wine and drink list, fill up on a hearty meal, such as the prime rib or crunchy coconut shrimp. 57-049 Kuilima Dr., Kahuku, (808) 293-2662, turtlebayresort.com/Oahu-Restaurants/Lei-Leis-Bar. —K.A.

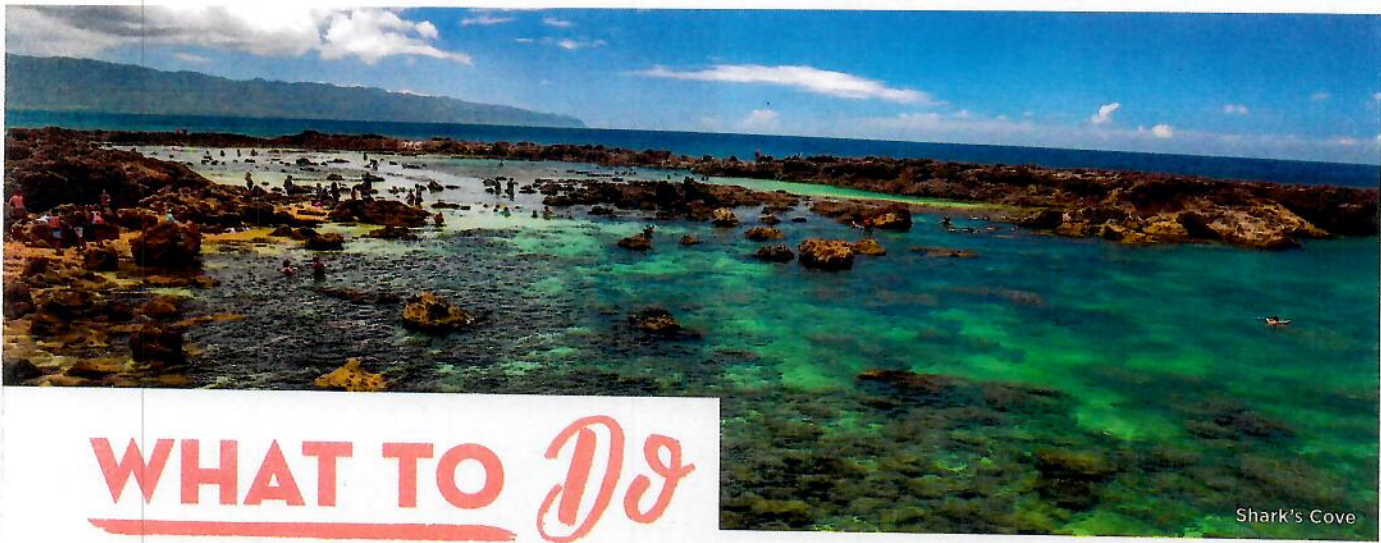
DAVID CROXFORD



COOL CAFÉS

Nestled in the bustling North Shore Marketplace, **Coffee Gallery** is known for its pastries and fruity açai bowls, but it's the variety of caffeinated drinks that sets it apart from other cafés. There's the standard espresso Americanos and café mochas on the menu, but there's also specialty drinks, with raspberry and white chocolate or peppermint and housemade mocha, and blended drinks with banana, chocolate and peanut butter. 66-250 Kamehameha Hwy., Hale'iwa, (808) 637-5355.

The **Sunrise Shack** (as seen on this magazine's cover) looks as cute as it sounds, like a petite miniature sunrise, and serves açai bowls and tropical smoothies. Its creamy Bulletproof coffees are also worth a try and are said to give the same caffeinated rush as normal coffee, without the crash. *Two locations:* 59 Kamehameha Hwy., Hale'iwa; 2335 Kalākaua Ave., Waikīkī, (808) 638-0506. —K.A.



Shark's Cove

WHAT TO DO

How to experience the North Shore on land and sea.

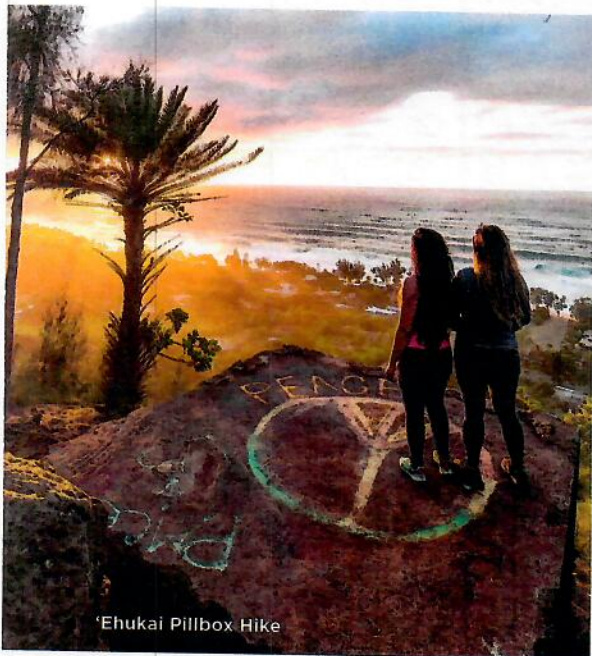
FLEDGLING SURFERS ARE WELCOME at the Sunset Suratt Surf Academy, which is owned by Bryan Suratt, known to most as Uncle Bryan. He and his crew teach at a few beginner surf spots around the North Shore, such as Pua'ena Point, Chun's Beach and Laniākea Beach. All three of these beaches are known for their high turtle populations, so don't be surprised if a few *honu* (Hawaiian green sea turtles) pop their heads up to say hello. 61-489 Kamehameha Hwy., Hale'iwa, surfnorthshore.com. For snorkelers, **Shark's Cove** is the place to be on those picture-perfect North Shore days. The cove features shallow tide pools and a bay; on sunny days the underwater views are crystal clear, even without a mask. Here you can find giant neon-colored parrot fish, underwater caves and tunnels, the occasional honu and schools of fish. *Pūpūkea*, across the street from the



Gunstock Ranch

food truck court past the Foodland. On Saturdays, find fresh produce, handcrafted accessories and unique pieces of art at the weekly **Waialua Farmers Market** set up in the Waialua Sugar Mill from 8:30 a.m. to 2 p.m., 67-106 Kealohanui St., Waialua, or check out the **North Shore Country Market** at Sunset Beach Elementary School from 8 a.m. to 2 p.m. 59 Kamehameha Hwy., Hale'iwa. There are a ton of hikes set along the North Shore, however only a few, such as the **'Ehukai Pillbox Hike**, yields a panoramic bird's-eye view of some of Hawai'i's best beaches. Starting at Sunset Beach Elementary School, the trail features a steep uphill incline; it eventually levels off, allowing hikers to enjoy a much more leisurely pace, all the

while rewarding them with scenic lookouts. The zany graffiti art inside of the pillbox at the top of the hike is also worth checking out. 59-178 Ke Nui Rd., Hale'iwa. Farther down Kamehameha Highway, **Gunstock Ranch** offers horseback rides of an hour or an hour and a half, taking you through mountainous trails on the ranch's 600-acre property. The ranch also has off-road fully guided UTV tours of historic World War II sites, hidden caves and sections of the farm that were used as sets for "Hawai'i Five-o." 56-250 Kamehameha Hwy., Kahuku, gunstockranch.com. Hidden in the hills of Waimea Valley, the **Pu'u o Mahuka Heiau State Monument** is steeped in history. This *heiau*, or traditional Hawaiian temple, features three stone enclosures and is believed to have been a *heiau luakini* (sacrificial temple). According to Hawaiian *mo'olelo* (legend), this is also the spot where Pele, the volcano goddess, leapt from O'ahu to Moloka'i. Visitors will also see panoramic views of Waimea Bay and much of the Pūpūkea area. From Kamehameha Highway, take Pūpūkea Road and turn right onto Pu'u o Mahuka.—K.A.



'Ehukai Pillbox Hike



Pu'u o Mahuka Heiau State Monument



LAZY RIVER

With emerald green waters stretching 3 miles from the coast into Waialua, the **Anahulu Stream** carries kayakers and stand-up paddleboarders through verdant valleys, under bridges and past luxurious country homes with sea turtles lounging here and there along its banks. If you don't have a kayak or stand-up paddleboard, find a nearby shop, such as Surf N Sea or Tropical Rush, to rent equipment.

HAWAII

HAWAIIIMAGAZINE.COM

GUIDE TO O'AHU'S

NORTH SHORE

THE BEACHES, SURF CONTESTS,
SHOPS, RESTAURANTS AND
ACTIVITIES WE RECOMMEND



COFFEE
SNACKS
FRUIT
WATER

PICK UP

+
Jump In
A Maui rafting tour in
search of humpbacks

+
Stay Awhile
Head west to historic
Waimea, Kaua'i

+
Drink Up
An O'ahu WWII museum
with its own speakeasy

#HAVEALOHAWILLTRAVEL

\$5.99US \$5.99CAN



DECEMBER 2018