

Predicting connectivity of green turtles at Palmyra Atoll, central Pacific: a focus on mtDNA and dispersal modelling

Eugenia Naro-Maciel, Stephen J. Gaughran, Nathan F. Putman, George Amato, Felicity Arengo, Peter H. Dutton, Katherine W. McFadden, Erin C. Vintinner and Eleanor J. Sterling

J. R. Soc. Interface 2014 **11**, 20130888, published 22 January 2014

Supplementary data

["Data Supplement"](#)

<http://rsif.royalsocietypublishing.org/content/suppl/2014/01/21/rsif.2013.0888.DC1.html>

References

[This article cites 62 articles, 13 of which can be accessed free](#)

<http://rsif.royalsocietypublishing.org/content/11/93/20130888.full.html#ref-list-1>

Subject collections

Articles on similar topics can be found in the following collections

[biocomplexity](#) (61 articles)

[environmental science](#) (94 articles)

Email alerting service

Receive free email alerts when new articles cite this article - sign up in the box at the top right-hand corner of the article or click [here](#)



Research

Cite this article: Naro-Maciel E, Gaughran SJ, Putman NF, Amato G, Arengo F, Dutton PH, McFadden KW, Vintinner EC, Sterling EJ. 2014 Predicting connectivity of green turtles at Palmyra Atoll, central Pacific: a focus on mtDNA and dispersal modelling. *J. R. Soc. Interface* **11**: 20130888.
<http://dx.doi.org/10.1098/rsif.2013.0888>

Received: 27 September 2013

Accepted: 2 January 2014

Subject Areas:

biocomplexity, environmental science

Keywords:

feeding ground, marine turtle, *Chelonia mydas*, mixed stock analysis, ocean currents, control region

Authors for correspondence:

Eugenia Naro-Maciel

e-mail: eugenia.naromaciel@csi.cuny.edu

Nathan F. Putman

e-mail: nathan.putman@gmail.com

Electronic supplementary material is available at <http://dx.doi.org/10.1098/rsif.2013.0888> or via <http://rsif.royalsocietypublishing.org>.

Predicting connectivity of green turtles at Palmyra Atoll, central Pacific: a focus on mtDNA and dispersal modelling

Eugenia Naro-Maciel¹, Stephen J. Gaughran², Nathan F. Putman⁴, George Amato², Felicity Arengo³, Peter H. Dutton⁵, Katherine W. McFadden⁶, Erin C. Vintinner³ and Eleanor J. Sterling³

¹Biology Department, City University of New York, College of Staten Island, 2800 Victory Boulevard, Staten Island, NY 10314, USA

²Sackler Institute for Comparative Genomics, and ³Center for Biodiversity and Conservation, American Museum of Natural History, Central Park West at 79th St., New York, NY 10024, USA

⁴Department of Fisheries and Wildlife, Oregon State University, 104 Nash Hall, Corvallis, OR 97330, USA

⁵Marine Mammal and Turtle Division, Southwest Fisheries Science Center, National Marine Fisheries Service, National Oceanic and Atmospheric Administration, 8901 La Jolla Shores Drive, La Jolla, CA 92037, USA

⁶US Geological Survey, South Carolina Cooperative Fish and Wildlife Research Unit, Clemson University, Clemson, SC 29634, USA

Population connectivity and spatial distribution are fundamentally related to ecology, evolution and behaviour. Here, we combined powerful genetic analysis with simulations of particle dispersal in a high-resolution ocean circulation model to investigate the distribution of green turtles foraging at the remote Palmyra Atoll National Wildlife Refuge, central Pacific. We analysed mitochondrial sequences from turtles ($n = 349$) collected there over 5 years (2008–2012). Genetic analysis assigned natal origins almost exclusively (approx. 97%) to the West Central and South Central Pacific combined Regional Management Units. Further, our modelling results indicated that turtles could potentially drift from rookeries to Palmyra Atoll via surface currents along a near-Equatorial swathe traversing the Pacific. Comparing findings from genetics and modelling highlighted the complex impacts of ocean currents and behaviour on natal origins. Although the Palmyra feeding ground was highly differentiated genetically from others in the Indo-Pacific, there was no significant differentiation among years, sexes or stage-classes at the Refuge. Understanding the distribution of this foraging population advances knowledge of green turtles and contributes to effective conservation planning for this threatened species.

1. Introduction

Movements that vary among stages shape the life histories of diverse taxa. Marine connectivity is thought to be greatly influenced by source population size and ocean circulation processes [1]. However, recent work has revealed increasingly complex scenarios with other factors, such as swimming behaviour [2,3], mortality [4,5] or intermittent climatic events like storms [6] playing key roles in determining the distributions of marine organisms. In numerous animal species with life cycles characterized by ontogenetic shifts in habitat utilization, population distribution remains insufficiently understood owing to cryptic stages and poorly defined linkages among stages [7]. Deficiencies in basic information on the distribution of such species impede the development of scientifically sound management recommendations and hinder understanding of population biology [8].

In marine turtles, after hatchlings emerge from nests on sandy beaches, they enter the ocean, where they are thought to spend their 'lost years'. This stage is thus termed, because turtle location is largely unknown [9], although a testable hypothesis for green turtles (*Chelonia mydas*) has recently been proposed [7]. In this oceanic stage, turtles primarily drift with currents before settling into

neritic habitats as juveniles [9]. After recruitment at approximately 3–5 years of age [10], green turtles are among species that generally forage in mixed aggregations drawn from various rookeries [7,8]. These feeding grounds (FGs) may contain a mix of stage-classes including transitory reproductive individuals moving through on their breeding migrations [11], or single stages as found in juvenile developmental habitats or adult FGs [12,13]. Adults undertake breeding migrations between FGs and nesting beaches that may be widely geographically separated [14–16]. Mating occurs offshore of the rookery and/or during reproductive migrations [17,18]. Many females return to nest in the area of their birth, a behaviour known as natal homing [9]. Less is known about males as their cryptic marine habitat makes them more difficult to research than females coming ashore to nest. However, recent studies have shown that adult males can migrate to disparate FGs like females, although males may return to breed more frequently than females [19–21]. Highly migratory green turtles are thus important elements of diverse and often-distant ecosystems. Effective conservation of these threatened [22,23] species requires understanding these connections [24–26].

Marine turtle researchers have primarily used genetic markers in combination with satellite telemetry and mark-recapture work to infer movement patterns and population distribution. The mixed stock analysis (MSA) method was developed to trace the natal origins of individuals at FGs [27,28]. In this approach, molecular markers are used to determine contributions of genetically differentiated source populations to FGs. Owing to natal homing, various Indo-Pacific green turtle rookery stocks are sufficiently differentiated at maternally inherited mitochondrial loci to allow for MSA [12,18,29–35]. Genetic analysis showed that Hawaiian FGs, for example, are composed almost entirely of individuals from the Hawaiian French Frigate Shoals rookery [30]. For management purposes, the Hawaiian Archipelago thus represents the Pacific North Central Regional Management Unit (RMU) [36]. By contrast, other regional FGs are mixed stocks with natal origins spanning local to distant rookeries and RMUs, that range from being undifferentiated to significantly different from other FGs [12,33,35].

MSAs indicate that FG genetic composition may be related to rookery size, geographical distance, ocean currents, severe weather and/or juvenile natal homing. In the latter process, young post-pelagic sea turtles move among FGs towards their natal region to feed [37]. However, MSA limitations can include broad confidence intervals (CIs), incomplete sampling, widely shared haplotypes and confounding effects of recent population history [38]. Fine-scale variation must be assessed prior to carrying out MSAs, for example to avoid error from non-resident males or females transiting through the FG [11,39]. Further, temporal variation has been investigated infrequently in Indo-Pacific green turtles, and research is needed into this issue that can impact MSAs assuming temporal constancy [40].

In a complementary approach, simulating hatchling dispersal within an ocean circulation model allows researchers to generate spatially explicit predictions based on trajectories for thousands of virtual particles. These predictions of transport can be compared with genetic MSA results to investigate effects of ocean currents on FG distribution and natal origins. Recent studies tracking particles released at Atlantic rookeries revealed significant impacts of ocean currents on genetic connectivity [7,24,41]. In this

study, thousands of virtual particles were released into an ocean circulation model in the vicinity of our focal FG and tracked backwards through time to identify possible oceanic pathways available to turtles for reaching that FG—the Palmyra Atoll National Wildlife Refuge (PANWR).

The PANWR is located within the Pacific Remote Islands Marine National Monument, about halfway between Hawaii and American Samoa, and is one of the least impacted coral reef systems in the central Pacific (figure 1). Palmyra Atoll is not currently inhabited except for limited occupation by management and research personnel. The Refuge contains a mixed stage-class green turtle FG that includes post-pelagic juveniles, subadults and adults. Also found there were a few turtles exhibiting the tapered carapace, light skin and darker carapace coloration described for eastern Pacific green turtle populations [42] and turtles caught in Central North Pacific fisheries [43]. Hawksbill turtles (*Eretmochelys imbricata*) were also present though less common, and turtle nesting is rare [44,45]. Green turtles at the PANWR were reported to lack the fibropapilloma tumours [45] prevalent in other populations such as Hawaii [46]. Surveys revealed an uneven distribution of green turtles around the 12 km² atoll, with abundance hot spots off the reef flats to the north, south, west and east [45]. The PANWR FG is likely connected to other regional areas for breeding and possibly foraging, and turtles leaving these protected waters may be subjected to threats such as habitat loss, harvest and fishery interactions [23], underscoring the need to reveal their unknown connectivity.

Here, we combined genetic analysis and dispersal modelling to investigate the population distribution of green turtles foraging at the PANWR. Our goals were to: (i) characterize the genetic composition of the foraging population with mtDNA control region sequences; (ii) investigate fine-scale genetic variation on the atoll, including among years, stage-classes and sexes; (iii) assess genetic differentiation between the PANWR and other FGs; (iv) elucidate the natal origins of turtles foraging at the PANWR using MSA; (v) compare our dispersal modelling results to genetic MSA estimates; and (vi) consider effects of population size, geographical distance, natal homing and ocean currents on FG composition. Resolving the genetic structure of this foraging population will add to overall knowledge of marine connectivity, with a focus on Indo-Pacific green turtles, and improve our ability to form effective conservation plans. This is especially important given the variety of threats sea turtles face along their migratory pathways.

2. Material and methods

2.1. Genetic analysis

2.1.1. Sampling and laboratory procedures

Tissue or blood samples were collected from green turtles captured at the PANWR between 2008 and 2012 ($n = 349$) using standard and previously used protocols [39,47]. All turtles were examined, measured, tagged for individual identification and released. Samples were collected from 4–24 August 2008, 14 August to 10 September 2009, 14–28 July 2010, 20 July to 18 August 2011 and 30 June to 3 August 2012. The curved carapace length (CCL) of sequenced turtles ranged from 40.3 to 113.6 cm (average = 69.6 cm), which was virtually the same as the entire sampled population [45]. DNA extractions

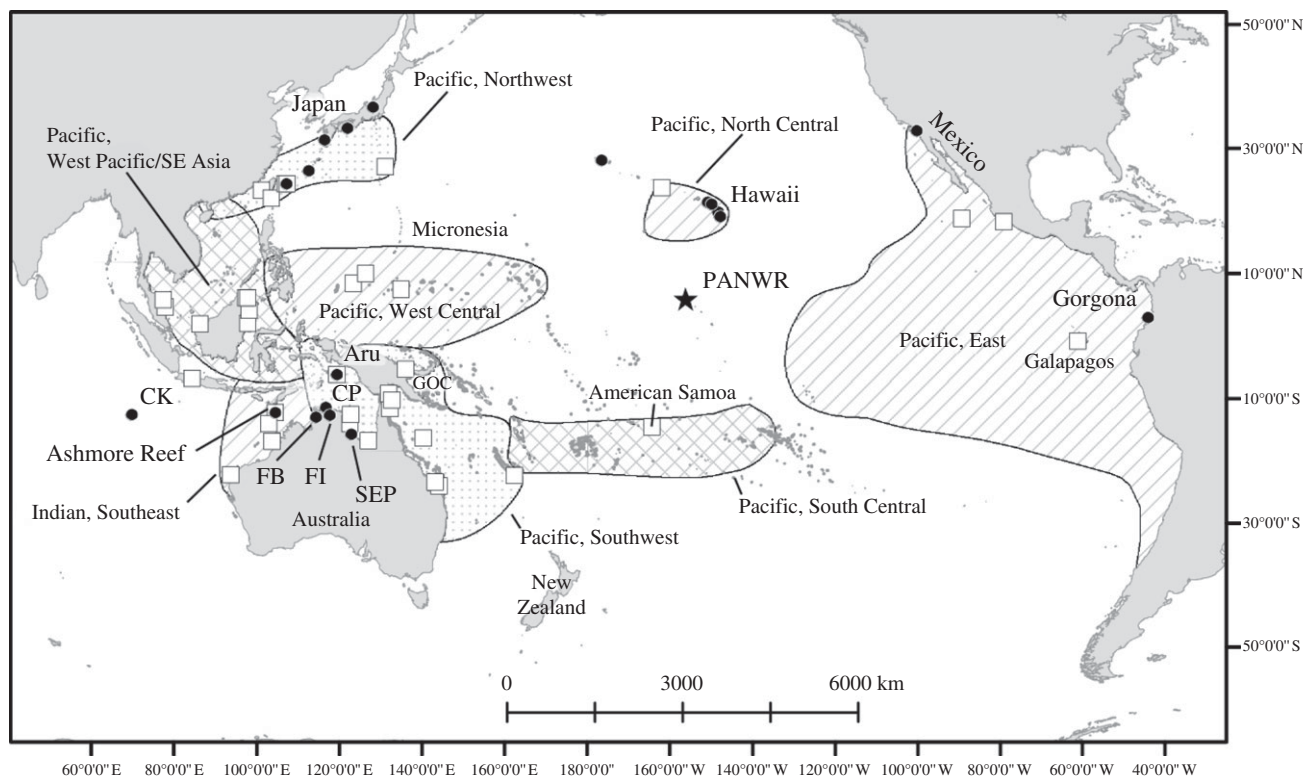


Figure 1. Location of the PANWR (star) with respect to other *C. mydas* rookeries (white squares), RMUs (references in table 1) and FGs (black dots) previously subject to genetic analysis. References and/or abbreviations for FGs are as follows—Hawaii [30]; Australasia [33], CK, Cocos Keeling; FB, Fog Bay; FI, Field Island; CP, Cobourg Peninsula; SEP, Sir Edward Pellews Island; GOC, Gulf of Carpentaria; Gorgona, Colombia: [12]; Japan [35].

were performed using a DNeasy kit following the manufacturer's instructions (Qiagen Inc.). Primers LCM15382 and H950 were used to amplify an approximately 857 bp fragment of the mtDNA control region and two tRNAs [48]. Standard conditions and negative controls were used, and sequencing was carried out in both directions [39,47]. Sequences were aligned using SEQUENCHER v. 4.6 (Gene Codes Corporation) or GENEIOUS v. 6.1 (Biomatters Inc.) and named according to the standardized Southwest Fisheries Science Center (SWFSC) designations.

2.1.2. Genetic diversity and differentiation

In regional analyses, sequences were truncated to approximately 384 bp for comparison with previous studies (figure 1 and tables 1 and 2). All statistical analyses of Palmyra sequences were conducted using these truncated segments as well as the longer sequences (approx. 857 bp) for comparison. GENEIOUS was used to construct a neighbour-joining tree of Palmyra sub-haplotypes derived from these longer sequences using the Tamura–Nei model. ARLEQUIN v. 3.11 [50] was used to calculate the number of haplotypes (n) as well as haplotype (h) and nucleotide (π) diversities [51]. ARLEQUIN was also used to carry out pairwise and global exact tests of population differentiation [52] as well as pairwise tests and analysis of molecular variance (AMOVA) using F -statistics based on haplotype frequencies only [53]. In temporal analyses, samples were compared among years to assess whether the MSA assumption of temporal constancy was met.

Nesting has been reported rarely at Palmyra but occurs regionally [44,45], and transient adults migrating through the area to breed might be confused with resident foraging turtles. Therefore, genetic differentiation among juveniles, subadults and adults was tested. Following Sterling *et al.* [45], individuals with CCL less than 65 cm were classified as juveniles, subadults were between 65 and 84.9 cm, and adults were greater than 85 cm. We also compared males with females. Individuals with CCL greater than or equal to 85 cm and tails greater than or equal to 30 cm long were classified

as males, whereas those greater than or equal to 85 cm with tails less than or equal to 21 cm were considered females, with the caveat that laparoscopy was not carried out and visual assignment of gender must be interpreted with caution. Prior to carrying out MSA, it was necessary to determine whether the PANWR could be considered a mixed stock. To test the possibility of single origins, the pairwise tests described above were used to compare Palmyra to Indo-Pacific RMU rookeries [36] shown in table 1 and figure 1. Significance values were obtained from at least 10 000 permutations. All significant tests were corrected for multiple comparisons using the sequential Bonferroni procedure [54].

2.1.3. Mixed stock analysis

Bayesian MSAs [27] were carried out to investigate PANWR natal origins at Indo-Pacific RMU rookeries [36] shown in table 1 and figure 1. RMUs with available genetic data were used as possible sources for the PANWR: (i) Pacific, Northwest; (ii) Pacific, Southwest; (iii) Pacific, West Central combined with neighbouring Pacific, South Central (to address issues with small rookery sample sizes); (iv) Pacific, West/Southeast Asia; (v) Indian, Southeast; (vi) Pacific, North Central; and (vii) Pacific, East (table 1 and figure 1). The BAYES program requires that sequences not found at any of the sources be removed; thus, five haplotypes unique to Palmyra (CMP97, 109, 132, 170, 207) comprising 3% of its green turtles were excluded. Seven chains, one per region, were run with 50 000 Markov chain Monte Carlo steps per chain. Each chain was initiated with a 95% contribution from one region per chain. The first half of the steps were discarded as burn-in, whereas the remaining 25 000 steps were used to calculate the posterior distribution of all chains combined. Four MSAs were carried out. The first (MSA₁) had equal prior probabilities for each region, whereas, in the second (MSA₂), priors were weighted to reflect annual numbers of nesting females [39,47] as shown in table 1. Following Proietti *et al.* [55], in MSA₃, priors were weighted according to particle drift trajectories intersecting with each RMU (the percentage of particles arriving at the PANWR from each RMU), and in

Table 1. Green sea turtle control region haplotype relative frequencies detected at Palmyra and the RMUs, with respect to total sample size (n). Also shown is number of nesting females per RMU, with references.

haplotype	FG	Regional Management Units						
	Palmyra	Indian	Pacific				North Central	East
		Southeast	West Pacific/ SE Asia	West Central and South Central	Southwest	Northwest		
CMP1	0.009						0.681	0.003
CMP2							0.148	
CMP3							0.170	0.035
CMP4	0.020							0.643
CMP5								0.109
CMP6								0.161
CMP7								0.006
CMP8								0.006
CMP9								0.006
CMP10								0.003
CMP11								0.003
CMP12								0.010
CMP13								0.003
CMP15								0.010
CMP18						0.215		
CMP19						0.008		
CMP20	0.559	0.107		0.509	0.047	0.157		
CMP22	0.258			0.094				
CMP32	0.057			0.057				
CMP39						0.041		
CMP40	0.003		0.096					
CMP44	0.003				0.120			
CMP47	0.009	0.036		0.019	0.334			
CMP49	0.003	0.250	0.399		0.125	0.116		
CMP50						0.099		
CMP54						0.314		
CMP57	0.006		0.343					
CMP60/CMP61	0.003			0.151				
CMP65	0.026			0.038				
CMP66					0.005			
CMP67			0.005					
CMP68					0.003			
CMP76				0.066				
CMP77	0.014			0.066		0.017		
CMP80	0.003				0.055			
CMP81		0.012						
CMP82			0.025					
CMP83		0.524			0.172			

(Continued.)

Table 1. (Continued.)

	FG	Regional Management Units						
		Indian		Pacific			North Central	East
		Palmyra	Southeast	West Pacific/SE Asia	West Central and South Central	Southwest		
CMP84						0.005		
CMP85						0.003		
CMP86		0.012						
CMP87			0.096			0.003		
CMP88						0.003		
CMP89						0.052		
CMP90		0.048						
CMP91		0.012	0.035			0.073		
CMP97	0.017							
CMP109	0.003							
CMP126						0.033		
CMP132	0.003							
CMP170	0.003							
CMP207	0.003							
Total	349	84	198	106	383	121	229	311
reference for haplotypes	this study	[32]	[32]	[32], Dutton <i>et al.</i> 2013, unpublished data	[32]	[31,34]	[30]	[29,30]
nesting females		10 100	21 000	2985	23 925	518	574	3750
reference for nesting females	n.a.	[36,49] (Scott reef unquantified)	[36]	[44]	[36,49] (PNG unquantified)	[36,49]	[36]	[36]

MSA₄, priors were set considering both population size and particle modelling (the percentages used in MSA₃ weighted by population size). In all analyses, Gelman and Rubin diagnostics confirmed chain convergence to the posterior density, with all shrink factors less than or equal to 1.0. Pearson's linear correlation tests were used to compare MSA estimates using STATPLUS v. 2009 (<http://www.analystsoft.com/en/products/statplusmac/>).

2.2. Particle tracking

Hindcast output was extracted from the Global Hybrid Coordinate Ocean Model (Global HYCOM) [56] to examine how surface currents might influence the probability of green turtles from different RMUs reaching the PANWR. Global HYCOM output has a spatial resolution of 0.08° (approx. 6–9 km grid spacing), a snapshot of current velocity at 00:00 h each day, and is forced using wind stress, wind speed, heat flux and precipitation. HYCOM assimilates satellite altimetry data, sea surface temperature and *in situ* measurements from a global array of expendable bathythermographs, Argo floats, and moored buoys to produce hindcast model output. Thus, Global HYCOM accurately resolves mesoscale

processes such as meandering currents, fronts, filaments and oceanic eddies as well as the transport of surface drifters.

ICHTHYOP v. 2.21 particle tracking software was used to identify possible migratory corridors post-hatchling turtles might use to reach the PANWR. Virtual particles were released within a 5.0° × 5.0° zone centred on Palmyra. Unlike previous simulations using ICHTHYOP [2] in which particles were released at a 'start' location and tracked forward through time, in this study, particles were released at their 'final' location (Palmyra) and tracked backwards through time. Particles were advected using a Runge–Kutta fourth-order, time-stepping method whereby particle position was calculated each half an hour [57]. This backtracking method has been used successfully to characterize population connectivity among green turtle rookeries and FGs throughout the Atlantic basin [7]. In total, 73 000 particles were released (40 particles per day) between 2012 and 2008. Latitude and longitude were recorded for each particle at 5 day intervals. HYCOM output is available from 2003 to present. Thus, to explore how annual variability in ocean circulation could influence recruitment to the PANWR, we plotted backtracking trajectories for particles released each year (2012, 2011, 2010, 2009, and 2008). To qualitatively examine how drift time might influence our estimates

Table 2. Mitochondrial control region diversity at Palmyra (in *italic*), as compared to other Indo-Pacific FGs from the published literature, with references. For standardization with other studies these measures were based on ~384 bp long mtDNA segments, and recalculated for FGs described in the literature. One individual that was not measured was not included in this analysis.

foraging ground	no. haplotypes	haplotype diversity (h)	nucleotide diversity (π)	CCL range (cm)	sample size	reference
Pacific						
Hawaii, USA	6	0.464 ± 0.018	0.003 ± 0.002	not given	788	[12,30]
Yaeyama, Japan	24	0.836 ± 0.022	0.033 ± 0.017	33.0–95.6 ^a	142	[35]
Ginoza, Japan	9	0.879 ± 0.043	0.035 ± 0.018	37.5–90.1 ^a	20	[35]
Kanto, Japan	8	0.696 ± 0.036	0.026 ± 0.013	33.0–105.2 ^a	145	[35]
Gorgona, Colombia	7	0.300 ± 0.080	0.011 ± 0.006	42.7–77.6	55	[12]
Cocos Keeling Is.	3	0.452 ± 0.070	0.001 ± 0.001	40–113.6	36	[33]
Cobourg Peninsula	15	0.785 ± 0.029	0.027 ± 0.014	66.6–103	91	[33]
Aru Is.	8	0.722 ± 0.059	0.037 ± 0.019	39.4–112.4	40	[33]
Sir Edward Pellew Is.	7	0.643 ± 0.035	0.008 ± 0.005	38.7–133.5	102	[33]
AR/FB/FI	22	0.713 ± 0.029	0.011 ± 0.006	33.7–78.2	194	[33]
<i>Palmyra juvenile (<65 cm)</i>	14	0.620 ± 0.037	0.011 ± 0.006	40.3–64.8	157	<i>this study</i>
<i>Palmyra subadult (65–84.9 cm)</i>	10	0.617 ± 0.041	0.011 ± 0.006	65.0–84.5	111	<i>this study</i>
<i>Palmyra adult (>84.9 cm)</i>	9	0.618 ± 0.037	0.005 ± 0.003	85.0–113.6	80	<i>this study</i>
<i>Palmyra male</i>	5	0.589 ± 0.060	0.003 ± 0.002	85.0–99.6	31	<i>this study</i>
<i>Palmyra female</i>	4	0.661 ± 0.070	0.008 ± 0.005	85.2–99.2	19	<i>this study</i>
<i>Palmyra all</i>	19	0.619 ± 0.023	0.009 ± 0.005	40.3–113.6	348	<i>this study</i>

^aStraight carapace length only.

of connectivity, we tracked particles for the duration of available HYCOM output. Thus, particles released in 2012 were backtracked for 7 total years; those released in 2011 were backtracked for 6 total years, etc. However, to standardize drift times across years for weighting the genetic MSA, only the proportion of particles (calculated so that they would sum to 100%) that arrived at the PANWR from individual rookeries located in the seven RMUs within 3 years of drift was used. Three years of drift was chosen to maximize the annual variability depicted in ocean circulation while giving particles sufficient time to disperse; moreover, additional years of drift did not greatly alter the outcome of dispersal trajectories.

3. Results

3.1. Genetic analysis

3.1.1. Diversity and differentiation

In total, 19 distinct haplotypes were identified, three of which were previously unknown (table 1 and figure 2). The three new haplotypes were assigned standardized names and accessioned on GenBank (CMP109.1, GU121961.1; CMP132.1, KF282705; CMP207.1, KF282706). The most common PANWR haplotype was CMP20 (found in 56% of PANWR turtles), reported from rookeries throughout the Pacific including at four RMUs (figure 1 and table 1). The second most common haplotype at Palmyra was CMP22 (25.8%). Among rookeries, CMP22 is known only from the Pacific West Central and Pacific South Central RMUs (table 1). The Pacific West Central RMU was the only one containing another PANWR haplotype, CMP32 (5.7% at Palmyra), whereas the Pacific South Central RMU uniquely contained the CMP65 haplotype (2.6% at

Palmyra). The three most common Palmyra haplotypes as well as the newly discovered CMP132.1 fell within a closely related clade (figure 2). The phylogenetic relationships of CMP20 and CMP22 subhaplotypes were poorly resolved and possibly non-monophyletic. The remaining new haplotypes (CMP 109.1, CMP 207.1) joined CMP97.1 in another clade (figure 2). Seven turtles with the endemic eastern Pacific haplotype CMP4 were also found at the PANWR, comprising 2% of the sample (table 1 and figure 2). All had tapered carapaces characteristic of the eastern Pacific, but only three adults/subadults were darker greenish-black in carapace colour. Of the remaining four turtles carrying the haplotype, two juveniles were closer to the common golden-brown coloration, and a subadult and a juvenile were characterized by greyer coloration. The remaining PANWR haplotypes were rare (less than 5%) and belonged to Australasia clades I, II and V (figure 2), but none belonged to Australasia clades III and IV consisting of rare haplotypes from Malaysia, Australia and New Caledonia [32,33].

Analysis of the shorter control region segment showed that haplotype diversity ($h = 0.619 \pm 0.023$) and nucleotide diversity ($\pi = 0.009 \pm 0.005$) were average compared with other FGs and similar to Sir Edward Pellew Island, Australia, although the number of haplotypes and sample size were relatively high (table 2). Pairwise comparisons showed no significant differentiation among individuals captured in different years at the PANWR (see the electronic supplementary material, table S1). The tests also showed no difference between females and males, or between juveniles, subadults and adults (see the electronic supplementary material, table S1). The PANWR was highly differentiated from other Indo-Pacific FGs (table 3), and from the RMUs (table 1, $p < 0.0001$). The FG AMOVA showed the percentage of variation among populations was

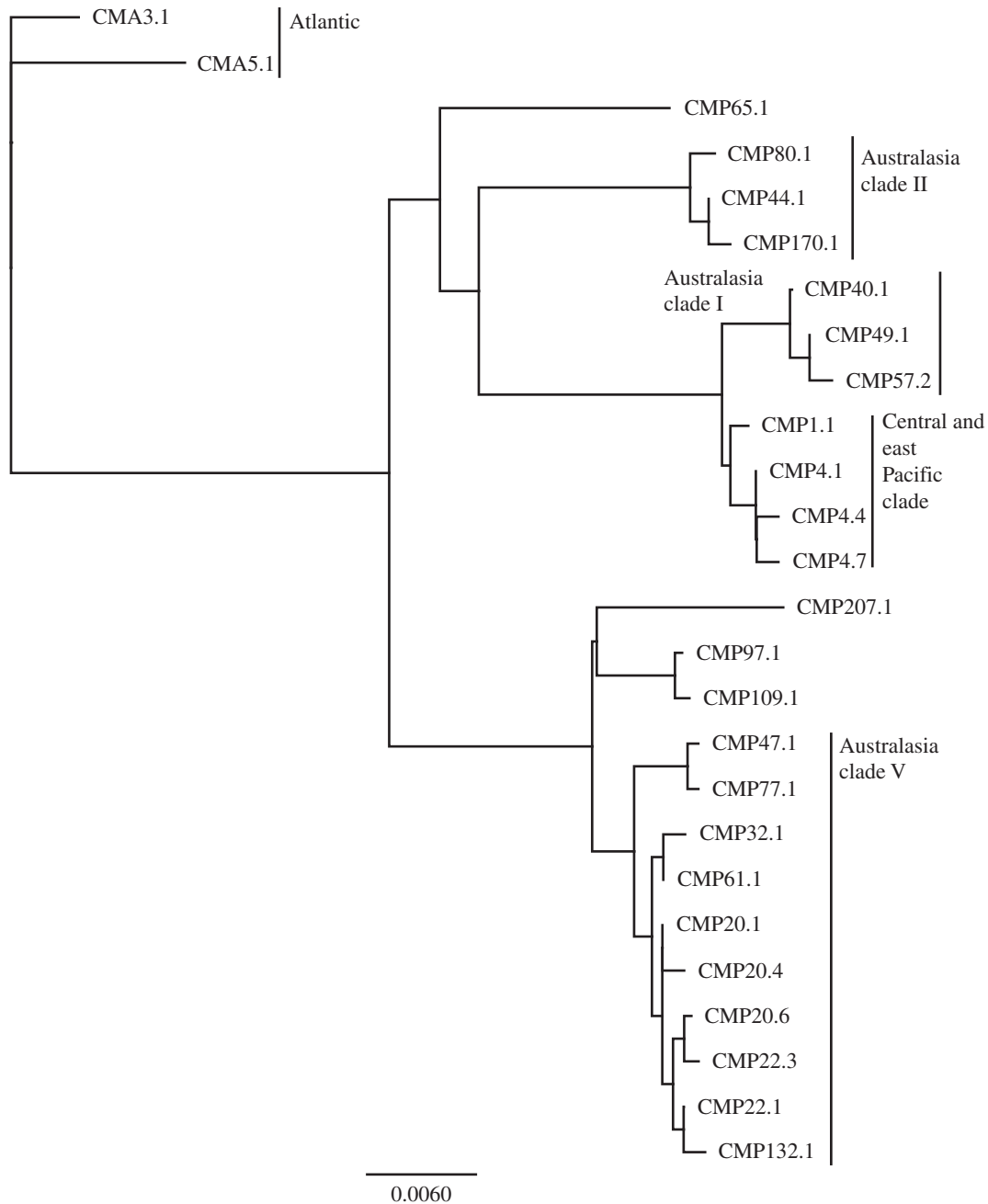


Figure 2. Neighbour-joining tree of subhaplotypes (approx. 857 bp) found at the PANWR, with respect to rookery clades. Branch lengths are proportional to sequence divergence, and Atlantic haplotypes CMA3.1 and 5.1 were used as outgroups.

lower than within populations (38.47% and 61.53%, respectively; $F_{ST} = 0.385$, $p < 0.0001$).

The longer control region fragment revealed 24 subhaplotypes. Haplotype diversity was 0.627 ± 0.023 , and nucleotide diversity was 0.007 ± 0.004 . Three of the variants identified for CMP4 (CMP4.1 ($n = 5$), 4.4 ($n = 1$) and 4.7 ($n = 1$; Dutton *et al.* 2013, unpublished data) were found in our sample. While 193 of the CMP20 sequences were CMP20.1, one sequence was CMP20.4 and another was CMP20.6. Similarly, one of the 90 CMP22 sequences had a new subhaplotype (CMP22.3). The other haplotypes had single subhaplotypes designated with their original CMP nomenclature followed by '.1' (e.g. CMP20.1), except for CMP57.2 (Dutton *et al.* 2013, unpublished data). When the longer sequences were examined, there continued to be no significant differentiation among: (i) years, (ii) juveniles, subadults and adults or (iii) females and males (see the electronic supplementary material, table S1).

3.1.2. Mixed stock analysis

MSA estimates for even and weighted priors were highly correlated ($R > 0.9999$, $p < 0.0001$), and CIs were comparatively narrow. PANWR natal origins were constrained almost exclusively (approx. 97%) to the Pacific, West Central and Pacific, South Central combined RMUs (table 4).

3.2. Particle tracking

The paths drifting objects take to reach Palmyra within 3 years are shown in figure 3. In principle, connectivity between the PANWR and turtle rookeries associated with all RMUs spanning the equatorial Pacific is possible via surface currents. The only RMU in which no connectivity was predicted was the North Central Pacific (Hawaii). Annual variability in ocean circulation indicates that particles are reaching Palmyra from rookeries (see the electronic supplementary material,

Table 3. Control region pairwise exact test p -values (below diagonal) and pairwise F_{ST} values (above diagonal) among Indo-Pacific green turtle FGs. The Palmyra study site is shown in bold. Asterisks indicate statistically significant comparisons prior to corrections. Values that were no longer significant after sequential Bonferroni corrections are shown in italics. Differences between tests are highlighted in grey. References as in table 2.

FG	PANWR	Gorgona	Hawaii	Cobourg	Aru	SEP	Cocos	AR/FB/FI	Yaeyama	Ginoza	KNM
Palmyra	—	0.46779***	0.46926***	0.27541***	0.24540***	0.37097***	0.43257***	0.32246***	0.28079***	0.28907***	0.34743***
Gorgona	0.00000***	—	0.57594***	0.43034***	0.50688***	0.50167***	0.63420***	0.44093***	0.37862***	0.48206***	0.45911***
Hawaii	0.00000***	0.00000***	—	0.43162***	0.46283***	0.48038***	0.53909***	0.44574***	0.37458***	0.39863***	0.45501***
Cobourg peninsula	0.00000***	0.00000***	0.00000***	—	0.18560***	0.03261**	0.12039***	<i>0.01333*</i>	0.18634***	0.17452***	0.25811***
Aru Is.	0.00000***	0.00000***	0.00000***	0.00000***	—	0.28284***	0.37523***	0.23282***	0.21133***	0.20682***	0.29249***
Sir Edward Pellew Is.	0.00000***	0.00000***	0.00000***	0.00000***	0.00000***	—	0.17106***	0.01078	0.25492***	0.26395***	0.32515***
Cocos Keeling Is.	0.00000***	0.00000***	0.00000***	0.00477**	0.00000***	0.00000***	—	0.15786***	0.31209***	0.36019***	0.38653***
Ashmore Reef/Fog Bay/Field Is.	0.00000***	0.00000***	0.00000***	<i>0.00272**</i>	0.00000***	<i>0.00163**</i>	<i>0.03484*</i>	—	0.22684***	0.22237***	0.29196***
Yaeyama	0.00000***	0.00000***	0.00000***	0.00000***	0.00000***	0.00000***	0.00000***	0.00000***	—	0.00159	0.13924***
Ginoza	0.00000***	0.00000***	0.00000***	0.00000***	0.00000***	0.00000***	0.00000***	0.00000***	0.37784	—	0.04641
Kanto-Nomaika-Muroto	0.00000***	0.00000***	0.00000***	0.00000***	0.00000***	0.00000***	0.00000***	0.00000***	0.00000***	0.02049*	—

* $p < 0.05$, ** $p < 0.01$, *** $p < 0.001$.

figure S1, white squares) along a near-Equatorial swathe traversing the Pacific. Particles are primarily arriving at the PANWR from the east, but some years transport also comes from the west. Although transport of the particles from the west to the PANWR was sporadic, when it occurred it was quite rapid; some particles travelled more than 8000 km in a year or less (see the electronic supplementary material, figure S1). The proportion of particles that reached the PANWR within 3 years from rookeries within each RMU (figure 3, white squares) was 49.74% arriving from the South Central and West Central Pacific, 49.52% from the East Pacific, 0.57% from the Southwest Pacific, 0.15% from the West Pacific/Southeast Asia, 0.02% from the Northwest Pacific, and 0.01% from the Southeast Indian Ocean.

4. Discussion

4.1. Palmyra and regional rookeries

Combining genetic analysis and dispersal simulations suggests that green turtle population distribution in the Indo-Pacific arises from a complex suite of factors. Surprisingly, source population size and ocean circulation processes, two factors that are considered to be very important in predicting marine connectivity [1], do not fully account for the proportion of haplotypes observed among green turtles at Palmyra Atoll. For instance, rookery sizes in the West Pacific/Southeast Asia and Pacific Southwest RMUs dwarf others by an order of magnitude (table 1) and yet at most 5% of the turtles at Palmyra originate from these regions (table 4). Although in the Atlantic population size strongly influenced the composition of FGs such as the Bahamas [58], as, at Palmyra, it was not a determining factor in Australasia [33], Colombia [12] or Japan [35]. Further, our genetic and particle modelling estimates disagree primarily in that the latter indicate nearly half of the particles arrive at Palmyra from the East Pacific RMU. By contrast, the upper genetic estimate of turtles from this RMU is 3.5% (table 4). The finding of a few eastern Pacific haplotypes at the PANWR is consistent with other studies that revealed only their occasional presence across large areas of the Pacific ([35,43] and Dutton *et al.* 2013, unpublished data). This supports the MSA results, whose validity is also highlighted by narrow CIs and robustness independent of weighting scheme (table 4). We therefore suggest that this discrepancy between genetic estimates and transport predictions is the result of biological processes absent from the particle model.

Our findings support the growing consensus that additional, possibly combined factors, such as mortality [4,5], sporadic meteorological and oceanographic events [6], and swimming and foraging behaviours [2,3] may play key roles in driving distributions and connectivity of marine populations. Studies increasingly indicate that marine animals do not randomly search out food patches, but rather follow somewhat-fixed migratory routes that coincide with typically productive oceanic regions [2,59,60]. For example, young loggerhead turtles in the north Atlantic possess a navigation strategy in which, when they encounter magnetic fields characteristic of specific oceanic regions, they adopt swimming directions that bring them into ocean currents leading to suitable nursery habitat [2]. Additionally, these behaviours generally appear to keep turtles from drifting outside of their normal oceanic range. Recent experiments showing similar responses to magnetic fields in Pacific salmon further suggest that this might be a widespread

Table 4. Mixed stock analysis of Palmyra green sea turtle control region haplotypes using Bayesian methods with equal priors (MSA₁), priors weighted to reflect population size (MSA₂), priors weighted considering particle modelling (MSA₃), and priors weighted by particle modelling and population size (MSA₄). Mean values are shown with standard deviation (s.d.). The 2.5% and 97.5% values indicate the upper and lower bounds of the 95% CI.

RMU	MSA	mean	s.d.	2.5%	median	97.5%
Indian, Southeast	MSA ₁	0.001	0.002	0.000	0.000	0.005
	MSA ₂	0.001	0.002	0.000	0.000	0.006
	MSA ₃	0.000	0.000	0.000	0.000	0.000
	MSA ₄	0.000	0.000	0.000	0.000	0.000
Pacific, West Pacific, SE Asia	MSA ₁	0.008	0.006	0.000	0.008	0.023
	MSA ₂	0.010	0.006	0.000	0.009	0.025
	MSA ₃	0.001	0.003	0.000	0.000	0.013
	MSA ₄	0.003	0.005	0.000	0.000	0.018
Pacific, South and West Central	MSA ₁	0.975	0.013	0.945	0.977	0.994
	MSA ₂	0.978	0.011	0.952	0.979	0.994
	MSA ₃	0.984	0.012	0.958	0.986	1.000
	MSA ₄	0.978	0.013	0.949	0.979	0.999
Pacific, Southwest	MSA ₁	0.008	0.007	0.000	0.007	0.024
	MSA ₂	0.010	0.007	0.000	0.008	0.026
	MSA ₃	0.003	0.006	0.000	0.000	0.019
	MSA ₄	0.007	0.007	0.000	0.005	0.024
Pacific, Northwest	MSA ₁	0.001	0.002	0.000	0.000	0.005
	MSA ₂	0.000	0.000	0.000	0.000	0.000
	MSA ₃	0.000	0.000	0.000	0.000	0.000
	MSA ₄	0.000	0.000	0.000	0.000	0.000
Pacific, North Central	MSA ₁	0.003	0.005	0.000	0.000	0.016
	MSA ₂	0.000	0.002	0.000	0.000	0.003
	MSA ₃	0.000	0.000	0.000	0.000	0.000
	MSA ₄	0.000	0.000	0.000	0.000	0.000
Pacific, East	MSA ₁	0.005	0.008	0.000	0.000	0.028
	MSA ₂	0.002	0.006	0.000	0.000	0.022
	MSA ₃	0.012	0.010	0.000	0.010	0.035
	MSA ₄	0.012	0.010	0.000	0.011	0.035

behaviour among marine animals [61]. Such behaviour would also tend to reduce temporal variability in distributions introduced by ocean circulation variation [62], as found at the PANWR (see the electronic supplementary material, figure S1), because animals would follow 'average' paths. This behaviour could potentially minimize effects of climate variation including extreme events such as El Niño, known to affect ocean currents bathing Pacific FGs [12].

Whether young east Pacific green turtles use geomagnetic cues to assess their location and orient their swimming to avoid being swept into the west central Pacific, where foraging areas might not be recognized, is not known. However, even a simple behaviour, such as westward drift eliciting northwards swimming by turtles from the Galapagos Islands, could bring them into contact with the North Equatorial Countercurrent, which would transport them eastward to South America. This transport possibility is well supported by genetic analysis of a green turtle FG near Colombia showing that most of the turtles arrive from the Galapagos [12].

Inclusion of mortality in dispersal models can also greatly alter perceived patterns of distribution [4], and it is possible that transport from east Pacific rookeries is greatly reduced by high mortality rates characteristic of young turtles. However, survival is likely increased with transport away from near-shore environments (where predator abundance is high), and there is no reason to believe that pelagic stage mortality differs substantively between RMUs. Thus, dispersal via ocean currents and active swimming is likely to be favourable for hatchlings of most populations [63,64]. Rather, drifting turtles might adopt swimming behaviour that promotes retention within the first area possessing adequate food availability; a possibility that could favour many turtles staying within the same broad region as their natal site.

Consistent with a hypothesis of transport via ocean currents combined with swimming, a large proportion of turtles was found by genetic MSA to come to Palmyra from the West and South Central combined RMUs. The atoll is bathed by the Equatorial Countercurrent flowing from the west, which

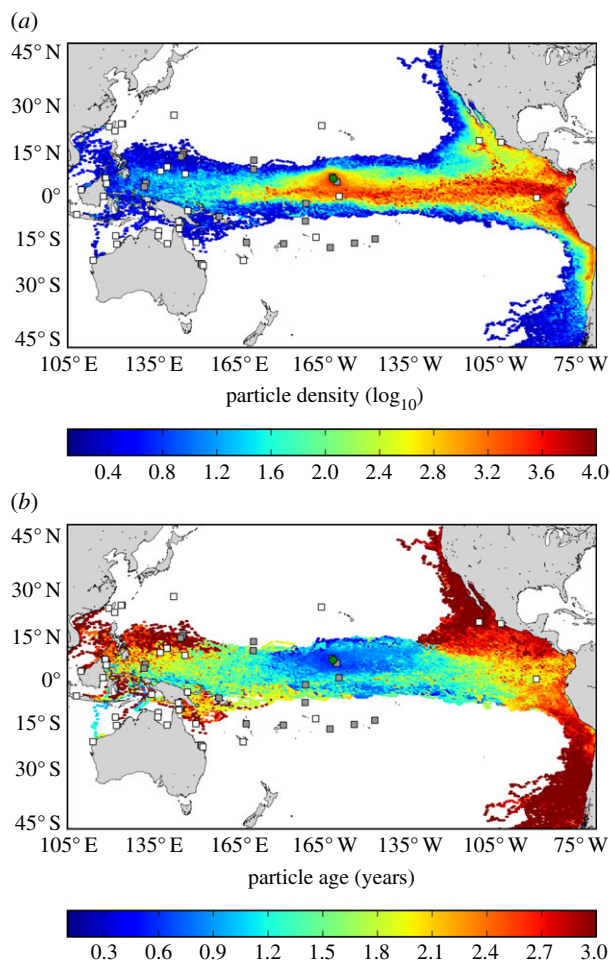


Figure 3. Distribution of 73 000 particles tracked in reverse for 3 years from Palmyra Atoll (green circle) relative to green turtle nesting sites, including those analysed genetically (white squares) as well as those not yet subject to genetic analysis (grey squares). (a) Shading indicates the number of particles at a particular location throughout the 3 year simulations (counted at 5 day intervals). Thus, this map identifies connectivity 'hot spots' between oceanic locations and Palmyra Atoll. Note the logarithmic scale. (b) Shading indicates the average number of years a particle would have to drift before reaching Palmyra Atoll from a particular location. (Online version in colour.)

could carry pelagic turtles from the West Central Pacific RMU to the PANWR. There was only a small genetic sample available from the South Central RMU ($n = 13$, Dutton *et al.* 2013, unpublished data), and further genetic characterization is required to substantiate its connectivity to the PANWR. Indeed, there are some rookeries between the West Central and South Central RMUs that have not been characterized genetically, and are therefore not yet included in any RMU [36] (figure 3). Although relatively small in terms of nesting females, they are still possible sources for the PANWR, where orphan/new haplotypes, an indication that regional rookeries are insufficiently characterized [33,35], were found. However, at 3% frequency, these orphan/new haplotypes (CMP97, 109, 132, 170, 207) are not a large part of the sample. Further, our MSA estimates had narrow CIs as discussed above, and were robust to different weighting schemes, highlighting their reliability. This is likely due to the informative nature of the data and the presence of rookery-specific haplotypes [65], as reported throughout the region [12,33,35]. Large immature green turtles are known to actively swim among different FGs in the Atlantic [66], and swimming by young loggerhead turtles is also reported from Japan [67]. Linkages between Palmyra and the South Central

RMU could highlight the importance of directed swimming by turtles of various stage-classes [2,66,68] to reach the small and isolated atoll.

4.2. Palmyra and regional feeding grounds

Genetic analysis provided useful insights concerning the lack of genetic structure at the PANWR and links to other FGs. Palmyra was distinct from all other characterized FGs, as was Gorgona in Colombia [12], highlighting their uniqueness. Australasian and Japanese FGs were also distinct from most other FGs, although some aggregations were made up of more than one FG [33,35]. The lack of distinctiveness among stage-classes at the PANWR may reflect a lack of juvenile migrations [33]. The study also provided data about cryptic males in that we detected no significant differentiation between males and females at this FG. At Palmyra, the lack of genetic variation among years was consistent with other areas ([35,39,47,69], but see [40]). Because temporal constancy is an MSA assumption, this validated the method's use. The results of pairwise comparisons were not substantively affected by using the longer mitochondrial sequences, however, it is possible that the subhaplotypes will be more useful once longer sequences are available from other regional sites [53].

Finally, our study provided information regarding the correspondence between genotype and phenotype for eastern Pacific turtles sometimes referred to as 'black turtles'. Early morphological studies noted that eastern Pacific turtles were not always characterized by the darker coloration [70, 71]. Genetic studies revealed that, although turtles with the characteristic phenotype generally carry the CMP4 and other haplotypes endemic to eastern Pacific rookeries, the relationship is not absolute. At the Gorgona FG, all CMP4 and other endemic eastern Pacific haplotypes were carried by black-green colour morphotypes, whereas turtles with western or central Pacific sequences had more variable and different colorations [12]. However, turtles nesting at Revillagigedos in Mexico and foraging in San Diego Bay, USA may carry endemic eastern Pacific haplotypes but have different phenotypes (Dutton *et al.* 2013, unpublished data). Phenotypic characteristics (colour and shape) are highly variable and not reliable diagnostics for identifying these individuals (Dutton *et al.* 2013, unpublished data). At the PANWR, this was also the case; all turtles carrying CMP4 had a tapered carapace characteristic of eastern Pacific populations, but different colorations were present. Furthermore, some individuals identified in the field as possible eastern Pacific turtles based on phenotype had western Pacific haplotypes.

4.3. Conservation applications

Turtles leaving the protected waters of the isolated and mostly uninhabited PANWR may face significant threats and dangers, underscoring the need to understand their population distribution for comprehensive conservation. Our study provides a clearer understanding of where green turtle migratory pathways and dispersal routes are concentrated in the Pacific, and the utility of environmental parameters such as ocean current dispersal modelling for predicting origins and possible occurrence. Space-based conservation management in open ocean systems is challenging, and our results may help pinpoint the geographical regions needing additional monitoring. Dispersal modelling showed that 'lost years' pathways might be of high

conservation concern, because many are located outside of protected areas and exclusive economic zones (EEZs). Such 'commons' may be subject to overexploitation [72] and may be more difficult to manage than hotspots nearer to the coast and within the EEZ of sovereign nations [25,26]. In terms of conservation priority, the Palmyra FG is highly distinct from all others, indicating an argument for its protection. Further, the study is helpful in defining the southern boundary of the North Central Pacific RMU, as it supports Dutton *et al.*'s [30] conclusions by showing no connectivity between these sites. Special attention should be paid to fibropapillomatosis, a disease with high incidence in areas such as Hawaii, which has not yet been observed on the Atoll [45]. Perhaps the lack of connectivity has slowed spread of the disease from highly infected areas to Palmyra. Habitat loss, climate change, harvest and fishery bycatch affect rookeries in the West Central and South Central RMUs [44], and thus Palmyra by extension. A possible next step will be to incorporate FGs such as the PANWR into RMUs [36], and our research furnishes information needed for these and other regional management initiatives. In conclusion, this study provides data necessary for conservation and management in protected and threatened areas, and assists with regional management of these highly migratory, transboundary and threatened marine turtles.

References

- Cowen RK, Gawarkiewicz G, Pineda J, Thorrold SR, Werner FE. 2007 Population connectivity in marine systems: an overview. *Oceanography* **20**, 14–21. (doi:10.5670/oceanog.2007.26)
- Putman NF, Verley P, Shay TJ, Lohmann KJ. 2012 Simulating transoceanic migrations of young loggerhead sea turtles: merging magnetic navigation behavior with an ocean circulation model. *J. Exp. Biol.* **215**, 1863–1870. (doi:10.1242/jeb.067587)
- Staaterman E, Paris CB. 2013 Modelling larval fish navigation: the way forward. *ICES J. Mar. Sci.* (doi:10.1093/icesjms/fst103)
- Cowen RK, Lwiza KMM, Sponaugle S, Paris CB, Olson DB. 2000 Connectivity of marine populations: open or closed? *Science* **287**, 857–859. (doi:10.1126/science.287.5454.857)
- Putman NF, Mansfield KL, He R, Shaver DJ, Verley P. 2013 Predicting the distribution of oceanic-stage Kemp's ridley sea turtles. *Biol. Lett.* **9**, 20130345. (doi:10.1098/rsbl.2013.0345)
- Monzón-Argüello C, Dell'Amico F, Morinière P, Marco A, López-Jurado LF, Hays GC, Scott R, Marsh R, Lee PLM. 2012 Lost at sea: genetic, oceanographic and meteorological evidence for storm-forced dispersal. *J. R. Soc. Interface* **9**, 1725–1732. (doi:10.1098/rsif.2011.0788)
- Putman NF, Naro-Maciel E. 2013 Finding the 'lost years' in green turtles: insights from ocean circulation models and genetic analysis. *Proc. R. Soc. B* **280**, 20131468. (doi:10.1098/rspb.2013.1468)
- Bowen BW, Karl SA. 2007 Population genetics and phylogeography of sea turtles. *Mol. Ecol.* **16**, 4886–4907. (doi:10.1111/j.1365-294X.2007.03542.x)
- Carr AF. 1967 *So excellent a fish: a natural history of sea turtles*. Garden City, NY: Natural History Press.
- Reich KJ, Bjorndal KA, Bolten AB. 2007 The 'lost years' of green turtles: using stable isotopes to study cryptic lifestages. *Biol. Lett.* **3**, 712–714. (doi:10.1098/rsbl.2007.0394)
- Limpus CJ, Reed PC. 1985 The green turtle, *Chelonia mydas* in Queensland: a preliminary description of the population structure in a coral reef feeding ground. In *Biology of Australasian frogs and reptiles* (eds G Grigg, R Shine, H Ehmann), pp. 47–52. Chipping Norton, UK: Surrey Beatty and Sons and The Royal Zoological Society Of New South Wales.
- Amorochio DF, Abreu-Grobois FA, Dutton PH, Reina RD. 2012 Multiple distant origins for green sea turtles aggregating off Gorgona Island in the Colombian eastern Pacific. *PLoS ONE* **7**, e31486. (doi:10.1371/journal.pone.0031486)
- Whiting S, Miller JD. 1998 Short term foraging ranges of adult green turtles (*Chelonia mydas*). *J. Herpetol.* **32**, 330–337. (doi:10.2307/1565446)
- Kennett R, Munungurritj N, Yunupingu D. 2004 Migration patterns of marine turtles in the Gulf of Carpentaria, northern Australia: implications for Aboriginal management. *Wildl. Res.* **31**, 241–248. (doi:10.1071/WR03002)
- Hirth HF. 1997 *Synopsis of the biological data on the green turtle Chelonia mydas (Linnaeus 1758)*. Washington, DC: Fish and Wildlife Service, U.S. Department of the Interior.
- Limpus CJ, Miller JD, Parmenter CJ, Reimer D, McLachlan N, Webb R. 1992 Migration of green (*Chelonia mydas*) and loggerhead (*Caretta caretta*) turtles to and from eastern Australian rookeries. *Wildl. Res.* **19**, 347–358. (doi:10.1071/WR9920347)
- FitzSimmons NN, Limpus CJ, Norman JA, Goldizen AR, Miller JD, Moritz C. 1997 Philopatry of male marine turtles inferred from mitochondrial DNA markers. *Proc. Natl Acad. Sci. USA* **94**, 8912–8917. (doi:10.1073/pnas.94.16.8912)
- FitzSimmons NN, Moritz C, Limpus CJ, Pope L, Prince R. 1997 Geographic structure of mitochondrial and nuclear gene polymorphisms in Australian green turtle populations and male-biased gene flow. *Genetics* **147**, 1843–1854.
- James MC, Eckert SA, Myers RA. 2005 Migratory and reproductive movements of male leatherback turtles (*Dermochelys coriacea*). *Mar. Biol.* **147**, 845–853. (doi:10.1007/s00227-005-1581-1)
- Schofield G *et al.* 2013 Satellite tracking large numbers of individuals to infer population level dispersal and core areas for the protection of an endangered species. *Divers. Distrib.* **19**, 834–844. (doi:10.1111/ddi.12077)
- Hays GC, Fossette S, Katselidis KA, Schofield G, Gravenor MB. 2010 Breeding periodicity for male sea turtles, operational sex ratios, and implications in the face of climate change. *Conserv. Biol.* **24**, 1636–1643. (doi:10.1111/j.1523-1739.2010.01531.x)
- NMFS, and , USFWS. 1998 *Recovery plan for US Pacific populations of the green turtle (Chelonia mydas)*. Silver Spring, MD: National Marine Fisheries Service, U.S. Dept. of Commerce.

23. Wallace BP *et al.* 2011 Global conservation priorities for marine turtles. *PLoS ONE* **6**, e24510. (doi:10.1371/journal.pone.0024510)
24. Godley BJ, Barbosa C, Bruford M, Broderick AC, Cattray P, Coyne MS, Formia A, Hays GC, Witt MJ. 2010 Unravelling migratory connectivity in marine turtles using multiple methods. *J. Appl. Ecol.* **47**, 769–778. (doi:10.1111/j.1365-2664.2010.01817.x)
25. Dutton PH, Squires D. 2008 Reconciling biodiversity with fishing: a holistic strategy for Pacific sea turtle recovery. *Ocean Dev. Int. Law* **39**, 1–23. (doi:10.1080/00908320701831849)
26. Dutton PH, Squires D. 2011 A holistic strategy for Pacific sea turtle conservation. In *Conservation and sustainable management of sea turtles in the Pacific Ocean* (eds P Dutton, D Squires, A Mahfuzuddin), pp. 37–59. Honolulu, HI: University of Hawaii Press.
27. Pella J, Masuda M. 2001 Bayesian methods for analysis of stock mixtures from genetic characters. *Fish. Bull.* **99**, 151–167.
28. Bolker BM, Okuyama T, Bjørndal KA, Bolten AB. 2007 Incorporating multiple mixed stocks in mixed stock analysis: ‘many-to-many’ analyses. *Mol. Ecol.* **16**, 685–695. (doi:10.1111/j.1365-294X.2006.03161.x)
29. Chassin-Noria O, Abreu-Grobois A, Dutton PH, Oyama K. 2004 Conservation genetics of the east Pacific green turtle (*Chelonia mydas*) in Michoacan, Mexico. *Genetica* **121**, 195–206. (doi:10.1023/B:GENE.000040394.47843.e4)
30. Dutton P, Balazs G, LeRoux R, Murakawa S, Zarate P, Martinez L. 2008 Composition of Hawaiian green turtle foraging aggregations: mtDNA evidence for a distinct regional population. *Endang. Species Res.* **5**, 37–44. (doi:10.3354/esr00101)
31. Cheng I-J, Dutton PH, Chen C-L, Chen H-C, Chen Y-H, Shea J-W. 2008 Comparison of the genetics and nesting ecology of two green turtle rookeries. *J. Zool.* **276**, 375–384. (doi:10.1111/j.1469-7998.2008.00501.x)
32. Dethmers KEM *et al.* 2006 The genetic structure of Australasian green turtles (*Chelonia mydas*): exploring the geographical scale of genetic exchange. *Mol. Ecol.* **15**, 3931–3946. (doi:10.1111/j.1365-294X.2006.03070.x)
33. Dethmers KEM, Jensen MP, FitzSimmons NN, Broderick D, Limpus CJ, Moritz C. 2010 Migration of green turtles (*Chelonia mydas*) from Australasian feeding grounds inferred from genetic analyses. *Mar. Freshw. Res.* **61**, 1376. (doi:10.1071/MF10084)
34. Nishizawa H, Abe O, Okuyama J, Kobayashi M, Arai N. 2011 Population genetic structure and implications for natal philopatry of nesting green turtles *Chelonia mydas* in the Yaeyama Islands, Japan. *Endang. Species Res.* **14**, 141–148. (doi:10.3354/esr00355)
35. Nishizawa H *et al.* 2013 Composition of green turtle feeding aggregations along the Japanese archipelago: implications for changes in composition with current flow. *Mar. Biol.* **160**, 2671–2685. (doi:10.1007/s00227-013-2261-1)
36. Wallace BP *et al.* 2010 Regional management units for marine turtles: a novel framework for prioritizing conservation and research across multiple scales. *PLoS ONE* **5**, e15465. (doi:10.1371/journal.pone.0015465)
37. Bowen BW *et al.* 2004 Natal homing in juvenile loggerhead turtles (*Caretta caretta*). *Mol. Ecol.* **13**, 3797–3808. (doi:10.1111/j.1365-294X.2004.02356.x)
38. Jensen MP, FitzSimmons NN, Dutton PH. 2013 Molecular genetics of sea turtles. In *The biology of sea turtles*, vol. 3 (eds J Wyneken, KJ Lohmann, JA Musick), pp. 135–154. Boca Raton, FL: CRC Press.
39. Naro-Maciel E, Becker JH, Lima EHS, Marcovaldi MA, DeSalle R. 2007 Testing dispersal hypotheses in foraging green sea turtles (*Chelonia mydas*) of Brazil. *J. Hered.* **98**, 29–39. (doi:10.1093/jhered/esl050)
40. Bjørndal KA, Bolten AB. 2008 Annual variation in source contributions to a mixed stock: implications for quantifying connectivity. *Mol. Ecol.* **17**, 2185–2193. (doi:10.1111/j.1365-294X.2008.03752.x)
41. Blumenthal JM *et al.* 2009 Turtle groups or turtle soup: dispersal patterns of hawksbill turtles in the Caribbean. *Mol. Ecol.* **18**, 4841–4853. (doi:10.1111/j.1365-294X.2009.04403.x)
42. Pritchard P. 1999 Status of the black turtle. *Conserv. Biol.* **13**, 1000–1003. (doi:10.1046/j.1523-1739.1999.98432.x)
43. Parker D, Dutton PH, Balazs GH. 2011 Oceanic diet and distribution of haplotypes for the green turtle, *Chelonia mydas*, in the Central North Pacific. *Pac. Sci.* **65**, 419–431. (doi:10.2984/65.4.419)
44. Maison KA, Kelly IK, Frutchey KP. 2010 *Green turtle nesting sites and sea turtle legislation throughout Oceania*. Honolulu, HI: National Marine Fisheries Service, U.S. Department of Commerce.
45. Sterling EJ, McFadden KW, Holmes KE, Vintinner EC, Arengo F, Naro-Maciel E. 2013 Ecology and conservation of marine turtles in a central Pacific foraging ground. *Chel. Conserv. Biol.* **12**, 2–16. (doi:10.2744/CCB-1014.1)
46. Herbst LH, Jacobson ER. 2003 Practical approaches for studying sea turtle disease and health. In *The biology of sea turtles*, vol. 2 (eds PL Lutz, JA Musick, J Wyneken), pp. 385–410. Boca Raton, FL: CRC Press.
47. Naro-Maciel E, Bondioli ACV, Martin M, de Pádua Almeida A, Baptistotte C, Bellini C, Marcovaldi MÂ, Santos AJB, Amato G. 2012 The interplay of homing and dispersal in green turtles: a focus on the southwestern Atlantic. *J. Hered.* **103**, 792–805. (doi:10.1093/jhered/ess068)
48. Leroux RA *et al.* 2012 Re-examination of population structure and phylogeography of hawksbill turtles in the wider Caribbean using longer mtDNA sequences. *J. Hered.* **103**, 806–820. (doi:10.1093/jhered/ess055)
49. SWOT. 2011 The state of the world’s sea turtles (SWOT) report, vol. VI. Arlington, TX: SWOT.
50. Excoffier L, Lischer HEL. 2010 Arlequin suite ver 3.5: a new series of programs to perform population genetics analyses under Linux and Windows. *Mol. Ecol. Resour.* **10**, 564–567. (doi:10.1111/j.1755-0998.2010.02847.x)
51. Nei M. 1987 *Molecular evolutionary genetics*. New York NY: Columbia University Press.
52. Raymond M, Rousset F. 1995 An exact test for population differentiation. *Evolution* **49**, 1280–1283. (doi:10.2307/2410454)
53. Shamblin BM, Bjørndal KA, Bolten AB, Hillis-Starr ZM, Lundgren I, Naro-Maciel E, Nairn CJ. 2012 Mitogenomic sequences better resolve stock structure of southern Greater Caribbean green turtle rookeries. *Mol. Ecol.* **21**, 2330–2340. (doi:10.1111/j.1365-294X.2012.05530.x)
54. Rice WR. 1989 Analyzing tables of statistical tests. *Evolution* **43**, 223–225. (doi:10.2307/2409177)
55. Proietti M, Reisser J, Kinas P, Kerr R, Monteiro D, Marins L, Secchi E. 2012 Green turtle *Chelonia mydas* mixed stocks in the western South Atlantic, as revealed by mtDNA haplotypes and drifter trajectories. *Mar. Ecol. Prog. Ser.* **447**, 195–209. (doi:10.3354/meps09477)
56. Chassignet EP, Hurlburt HE, Smedstad OM, Halliwell GR, Hogan PJ, Wallcraft AJ, Baraille R, Bleck R. 2007 The HYCOM (hybrid coordinate ocean model) data assimilative system. *J. Mar. Syst.* **65**, 60–83. (doi:10.1016/j.jmarsys.2005.09.016)
57. Lett C, Verley P, Mullon P, Parada C, Brochier T, Penven P, Blank B. 2008 A Lagrangian tool for modelling ichthyoplankton dynamics. *Environ. Model. Softw.* **23**, 1210–1214. (doi:10.1016/j.envsoft.2008.02.005)
58. Lahanas PN, Bjørndal KA, Bolten AB, Encalada SE, Miyamoto MM, Valverde RA, Bowen BW. 1998 Genetic composition of a green turtle (*Chelonia mydas*) feeding ground population: evidence for multiple origins. *Mar. Biol.* **130**, 345–352. (doi:10.1007/s002270050254)
59. Wilson RP, Griffiths IW, Legg PA, Friswell M, Bidder OR, Halsey LG, Lambertucci SA, Shepard ELC. 2013 Turn costs change the value of animal search paths. *Ecol. Lett.* **16**, 1145–1150. (doi:10.1111/ele.12149)
60. Costa DP, Breed GA, Robinson PW. 2012 New insights into pelagic migrations: implications for ecology and conservation. *Annu. Rev. Ecol. Evol. Syst.* **43**, 73–96. (doi:10.1146/annurev-ecolsys-102710-145045)
61. Putman NF, Scanlan MM, Billman EJ, O’Neil JP, Couture RB, Quinn TP, Lohmann KJ, Noakes DLG. In press. Inherited magnetic map guides ocean navigation in juvenile Pacific salmon. *Curr. Biol.*
62. Hays GC, Fossette S, Katselidis KA, Mariani P, Schofield G. 2010 Ontogenetic development of migration: Lagrangian drift trajectories suggest a new paradigm for sea turtles. *J. R. Soc. Interface* **7**, 1319–1327. (doi:10.1098/rsif.2010.0009)
63. Putman NF, Bane JM, Lohmann KJ. 2010 Sea turtle nesting distributions and oceanographic constraints on hatchling migration. *Proc. R. Soc. B* **277**, 3631–3637. (doi:10.1098/rspb.2010.1088)
64. Putman NF, Scott R, Verley P, Marsh R, Hays GC. 2012 Natal site and offshore swimming influence fitness and long-distance ocean transport in young sea turtles. *Mar. Biol.* **159**, 2117–2126. (doi:10.1007/s00227-012-1995-5)

65. Karl SA, Toonen RJ, Grant WS, Bowen BW. 2012 Common misconceptions in molecular ecology: echoes of the modern synthesis. *Mol. Ecol.* **21**, 4171–4189. (doi:10.1111/j.1365-294X.2012.05576.x)
66. Godley B, Lima E, Åkesson S, Broderick A, Glen F, Godfrey M, Luschi P, Hays G. 2003 Movement patterns of green turtles in Brazilian coastal waters described by satellite tracking and flipper tagging. *Mar. Ecol. Prog. Ser.* **253**, 279–288. (doi:10.3354/meps253279)
67. Okuyama J, Kitagawa T, Zenimoto K, Kimura S, Arai N, Sasai Y, Sasaki H. 2011 Trans-Pacific dispersal of loggerhead turtle hatchlings inferred from numerical simulation modeling. *Mar. Biol.* **158**, 2055–2063. (doi:10.1007/s00227-011-1712-9)
68. Gaspar P, Benson SR, Dutton PH, Réveillère A, Al E. 2012 Oceanic dispersal of juvenile leatherback turtles: going beyond passive drift modeling. *Mar. Ecol. Prog. Ser.* **457**, 265–284.
69. Bass AL, Epperly SP, Braun-McNeill J. 2004 Multi-year analysis of stock composition of a loggerhead turtle (*Caretta caretta*) foraging habitat using maximum likelihood and Bayesian methods. *Conserv. Genet.* **5**, 783–796. (doi:10.1007/s10592-004-1979-1)
70. Carr AF. 1961 Pacific turtle problem. *Nat. Hist.* **70**, 64–71.
71. Pritchard PCH. 1971 Galapagos sea turtles: preliminary findings. *J. Herpetol.* **5**, 1–9. (doi:10.2307/1562836)
72. Hardin G. 1968 The tragedy of the commons. *Science* **162**, 1243–1248. (doi:10.1126/science.162.3859.1243)