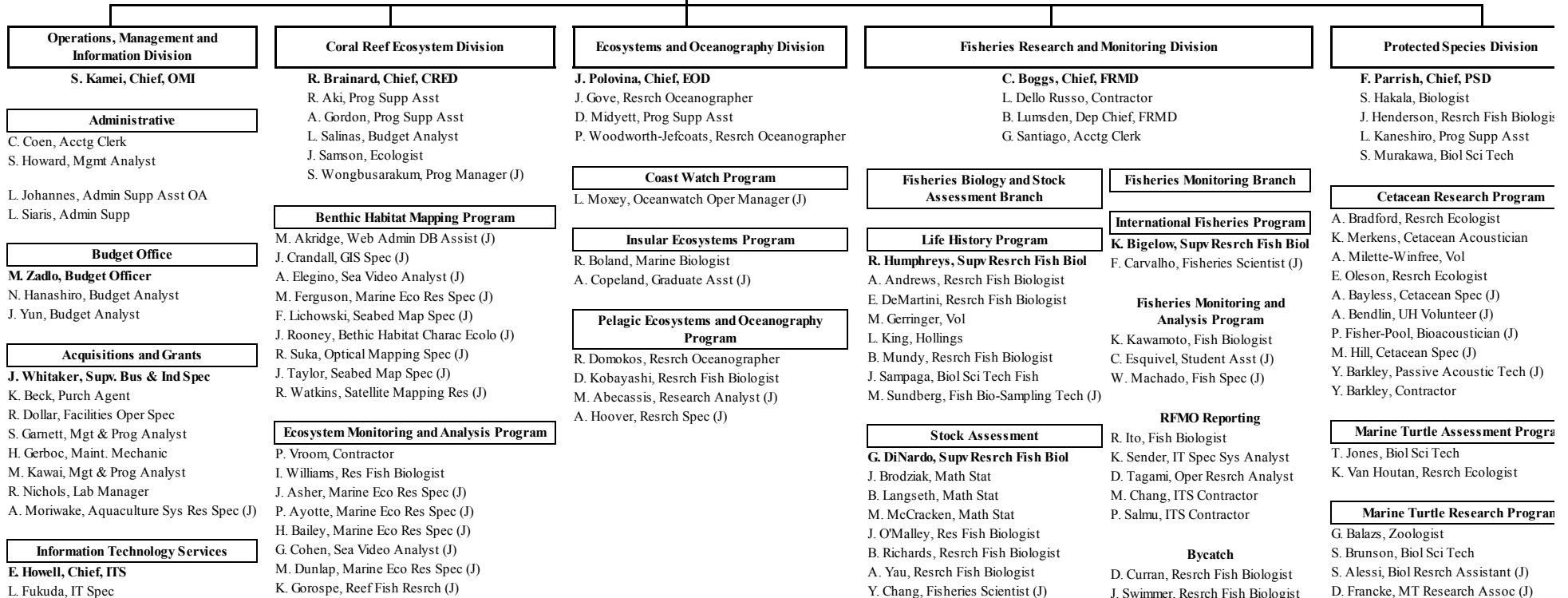
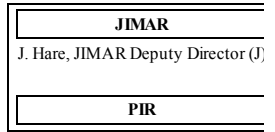
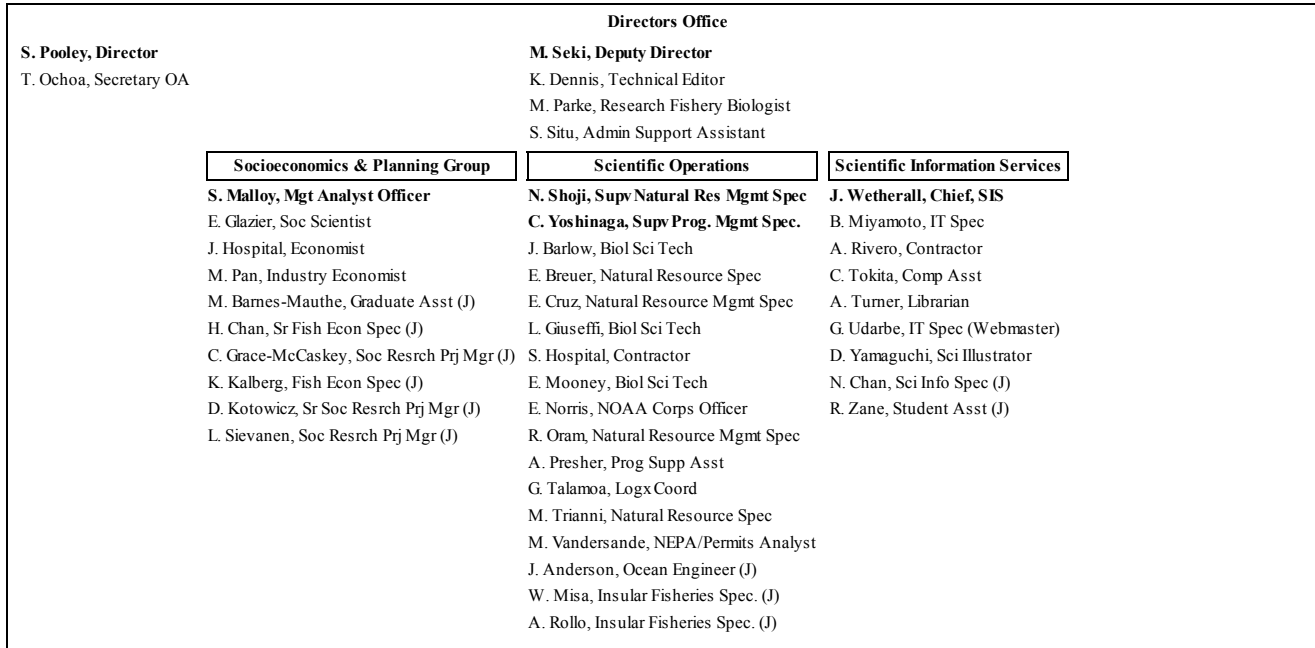


Pacific Island Fisheries Science Center



W. Higuchi, IT Spec
R. Price, IT Spec
C. Sugimoto, IT Spec
R. Tasaka, IT Spec
R. Uyeda, IT Spec
S. Wong, IT Spec
R. Yoshimoto, Comp Asst
H. Wang, Spatial Data Analyst & Dev (J)

A. Gray, Reef Fish Res Spec (J)
A. Heenan, Resrch Spec (J)
K. Lino, Marine Eco Res Spec (J)
K. McCoy, Marine Eco Res Spec (J)
P. Misa, Marine Eco Res Spec (J)
M. Moews, Marine Ecosystems Proj Coord (J)
L. Murillo, UH Volunteer (J)
K. Reardon, Marine Eco Res Spec (J)
B. Schumacher, Coral Reef Researcher (J)
M. Sudnovsky, Marine Ecosys. Oper. Coord (J)
D. Swanson, Coral Reef Researcher (J)
M. Timmers, Marine Eco. Res. Proj. Mgr (J)
B. Vargas-Angel, Coral Ecology Res (J)
J. Zanzow, Sr Reef Fish Resrch (J)

Information Services

J. Abdul, Applications Developer (J)
T. Acoba, GIS Spec (J)
A. DesRochers, Info Svc Manager (J)
A. Dillon, Graphics/Publishing Assoc (J)
J. Ehse, GIS Spec (J)
T. Kanemura, Data Mgmt. Admin (J)
K. Trick, Data Mgt Spec (J)
B. Watabu, Database Tech (J)
M. Weijerman, Coral Ecology Res (J)

Logistics and Marine Debris

K. Bwy, UH Volunteer (J)
J. Garriques, Marine Eco Res Spec (J)
M. Manuel, Operations Manager (J)
J. Morioka, Field Log Spec (J)
K. O'Brien, Marine Eco Res Spec (J)
R. Reardon, Marine Eco Res Spec (J)

Oceanography and Water Quality Program

K. Wong, Engineer
S. Clark, Marine Eco Res Spec (J)
S. Grafeld, Graduate Asst (J)
N. Pomeroy, Marine Eco Res Spec (J)
R. Venegas, Res Oceanographer/Data Analyst (J)
C. Young, Oceanographer (J)

E. Fletcher, Comp & DB Assist (J)
H. Lee, Fisheries Scientist (J)
M. Nadon, Fish Assess Spec (J)
W. Walsh, PIFSC Researcher (J)

J. Wang, Resrch Ecologist

Insular Fish Monitoring Program

K. Lowe, Fishery Mgt Specialist
F. Cabacungan, IT Spec
F. Dowdell, IT Spec
H. Ma, Statistician
P. Tao, IT Spec

Western Pacific Fishery Information Network

M. Quach, IT Spec
B. Akizuki, Fishery Aide (J)
K. Brousseau, Tech Writer (J)
A. Carias, Fish Data Assist (J)

D. Gonzales, Comp Spec (J)
G. Kagami, Fish DB Tech (J)
J. Miller, Fish Data Super (J)
Y. Siu, Fish Data Aid (J)
D. Stelling, Fish Data Assist (J)
A. Tomita, Computer Data Spec (J)
B. Wei, Lead Comp Spec (J)
E. Yokomori, Fish Data Assist (J)

D. Parker, Resrch Assoc III (J)
J. Spring, Biol Resrch Assoc (J)
N. Doman, Student Assistant (MOP)
D. Estess, Student Assistant (MOP)
J. Henry, Student Assistant (MOP)
L. Knight, Student Assistant (MOP)
S. Matadobra, Student Assistant (MOP)
J. Rose, Student Assistant (MOP)
R. Ziegler, Student Assistant (MOP)
R. Morris, Veterinarian

Monk Seal Research Program

C. Littman, Supv Ecologist
J. Baker, Resrch Marine Biologist
B. Becker, Wildlife Biologist
T. Johanos-Kam, Resrch Wild Biologist

S. Robinson, Resrch Ecologist
E. Tong, Contractor
D. Wickham, Contractor
C. Aono, UH Volunteer (J)
J. Brack, Biol Resrch Assistant (J)
G. Brookshire, UH Volunteer (J)
M. Cahoon, Foraging Resrch Assoc (J)
S. Callan, UH Volunteer (J)
N. Cody, UH Volunteer (J)
B. Cook, Biol Resrch Tech (J)
J. Farrer, Biol Resrch Tech (J)
S. Farry, Biol Resrch Tech (J)
T. Heckman, UH Volunteer (J)
M. Hess, UH Volunteer (J)
K. Jorge, UH Volunteer (J)
L. Kashinsky, Vet Prog Supv (J)
A. Kaufman, Resp/Supp Tech (J)
V. Khurana, Data Mgt Spec (J)
J. Lopez, Field Resrch Supv (J)
K. Matsuoka, Biol Resrch Assistant (J)
C. McAtee, Biol Resrch Tech (J)
K. Meise, UH Volunteer (J)
K. Rhea, UH Volunteer (J)
D. Roberts, Biol Resrch Assistant (J)
H. Ronco, UH Volunteer (J)
J. Strapple, UH Volunteer (J)
M. Sullivan, Emerg Resp Resrch Assoc (J)
T. Sy, UH Volunteer (J)
W. Taylor, Biol Resrch Tech (J)
T. Wurth, MS Bio Tech (J)
K. Yeager, Biol Resrch Assistant (J)
M. Barbieri, Contractor
R. Braun, Contractor
A. Harting, Contractor