





U-236







278

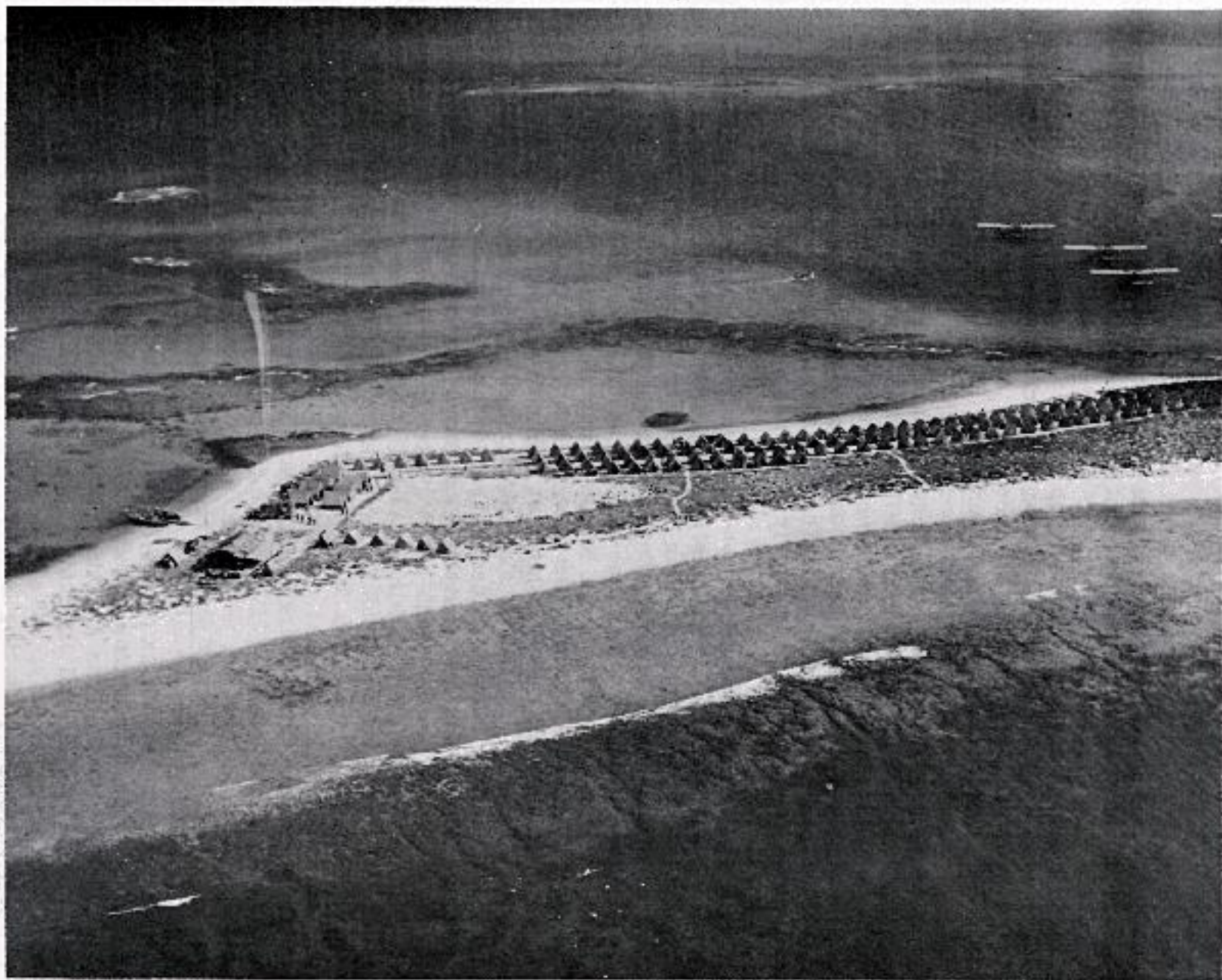


Figure 31. East Island "tent city," 11 November 1935. Official U. S. Navy photograph.



Figure 34. Newly constructed East Island Coast Guard LORAN Station, 24 April 1945.
Official U. S. Navy photograph.



Figure 43. 'East Island's vegetation, June 1962. Hawaiian Division of Fish and Game photograph by David B. Marshall.





~~PROPERTY OF LIBRARY
NATIONAL MARINE FISHERIES SERVICE
ST. PETERSBURG BEACH, FLORIDA 33706~~
LIBRARY OF
GEORGE H. BALAZS
w/D

ATOLL RESEARCH BULLETIN

150. THE NATURAL HISTORY OF FRENCH FRIGATE SHOALS,
NORTHWESTERN HAWAIIAN ISLANDS¹

by A. Binion Amerson, Jr.



Issued by
THE SMITHSONIAN INSTITUTION
Washington, D.C., U.S.A.







