



**Fall and Rise
of the**

Hawaiian Honu

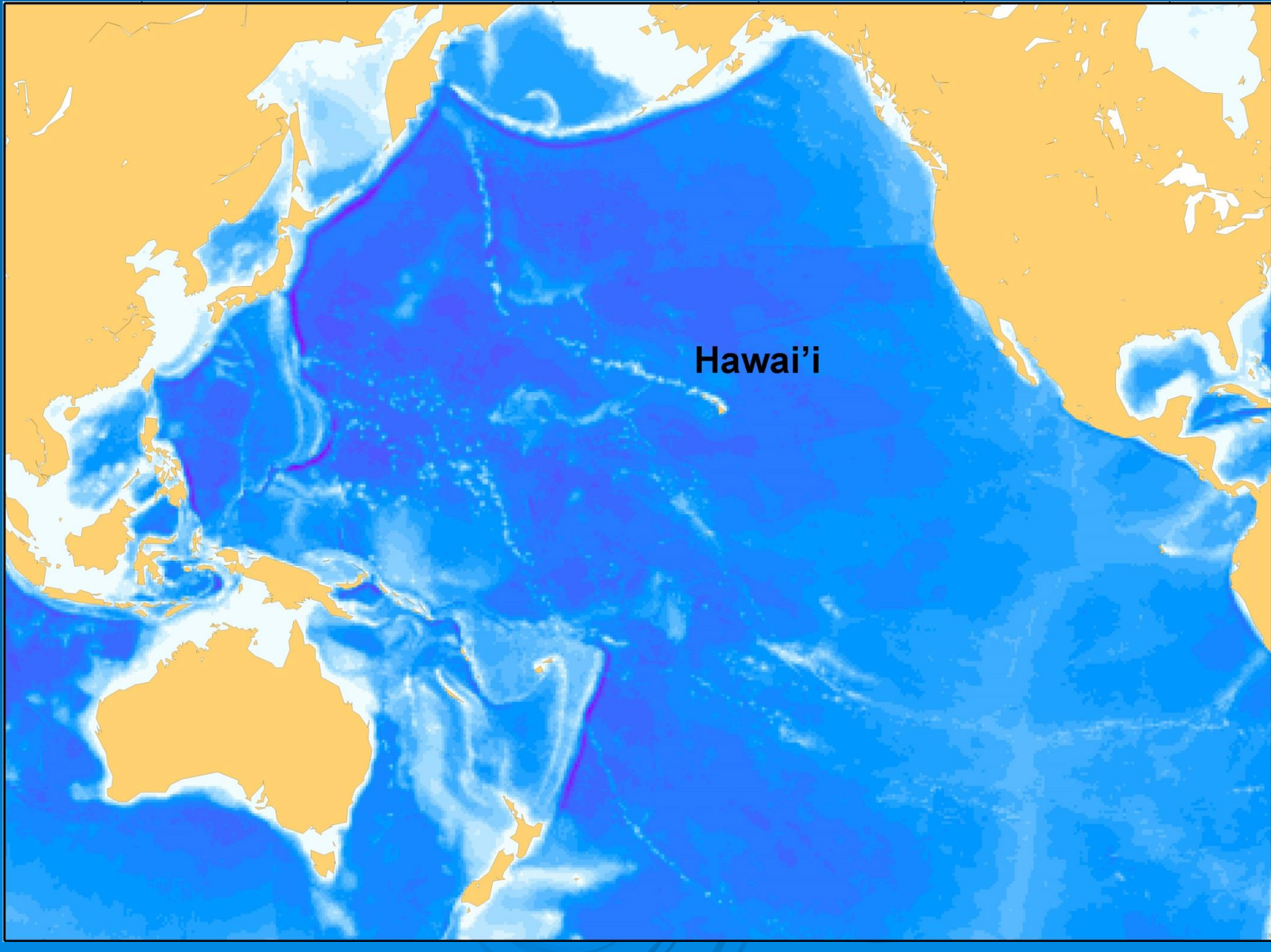
鳳凰



A 50-year Witness



To Cultural and Conservation Change



Hawai'i



WANTED!



FOR
STEAKS, SOUPS
PURSES,
SHOES
ETC.
ETC.



REPRODUCTION OF THE ORIGINAL DRAWING BY THE ARTIST

WKS

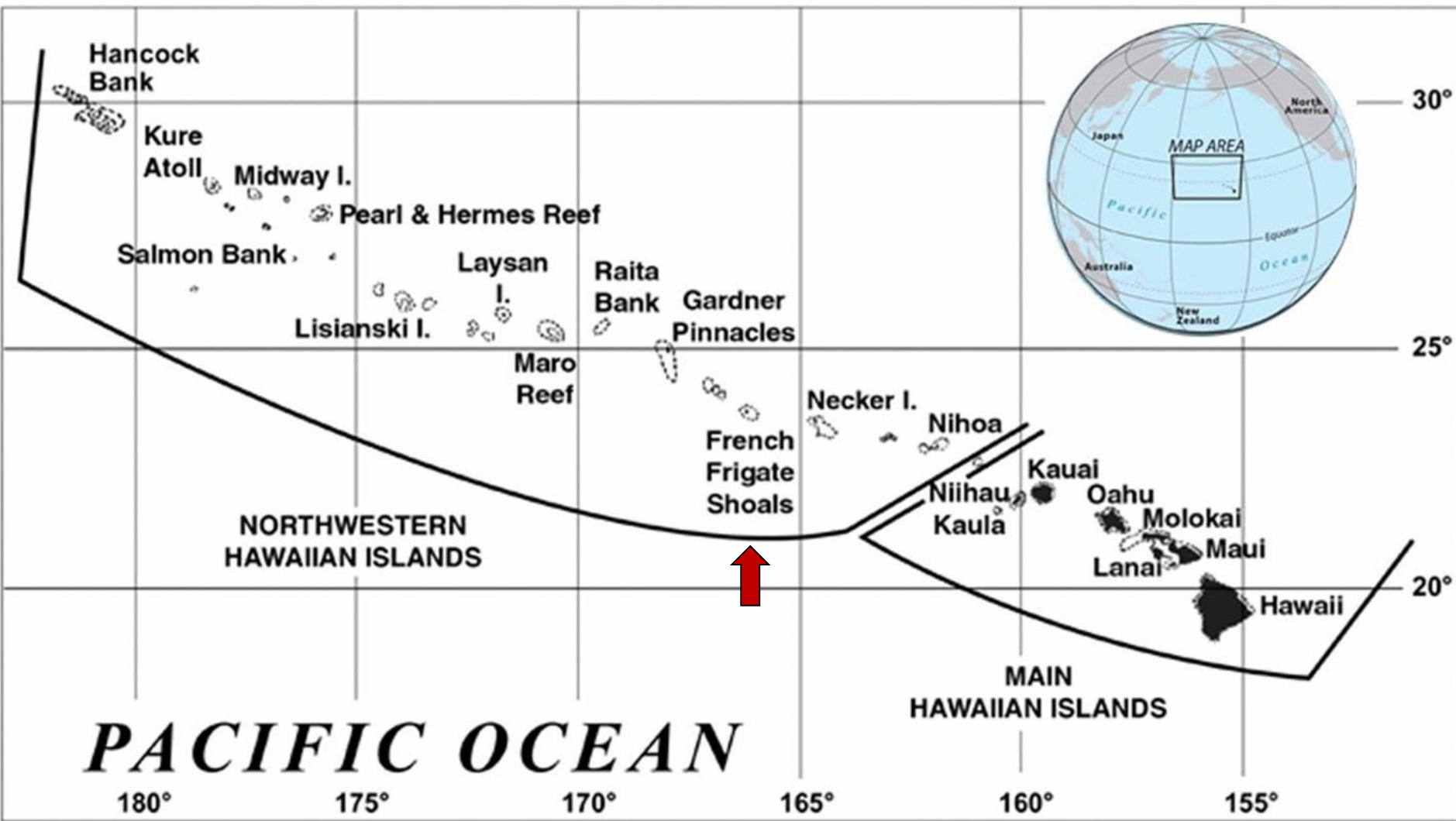
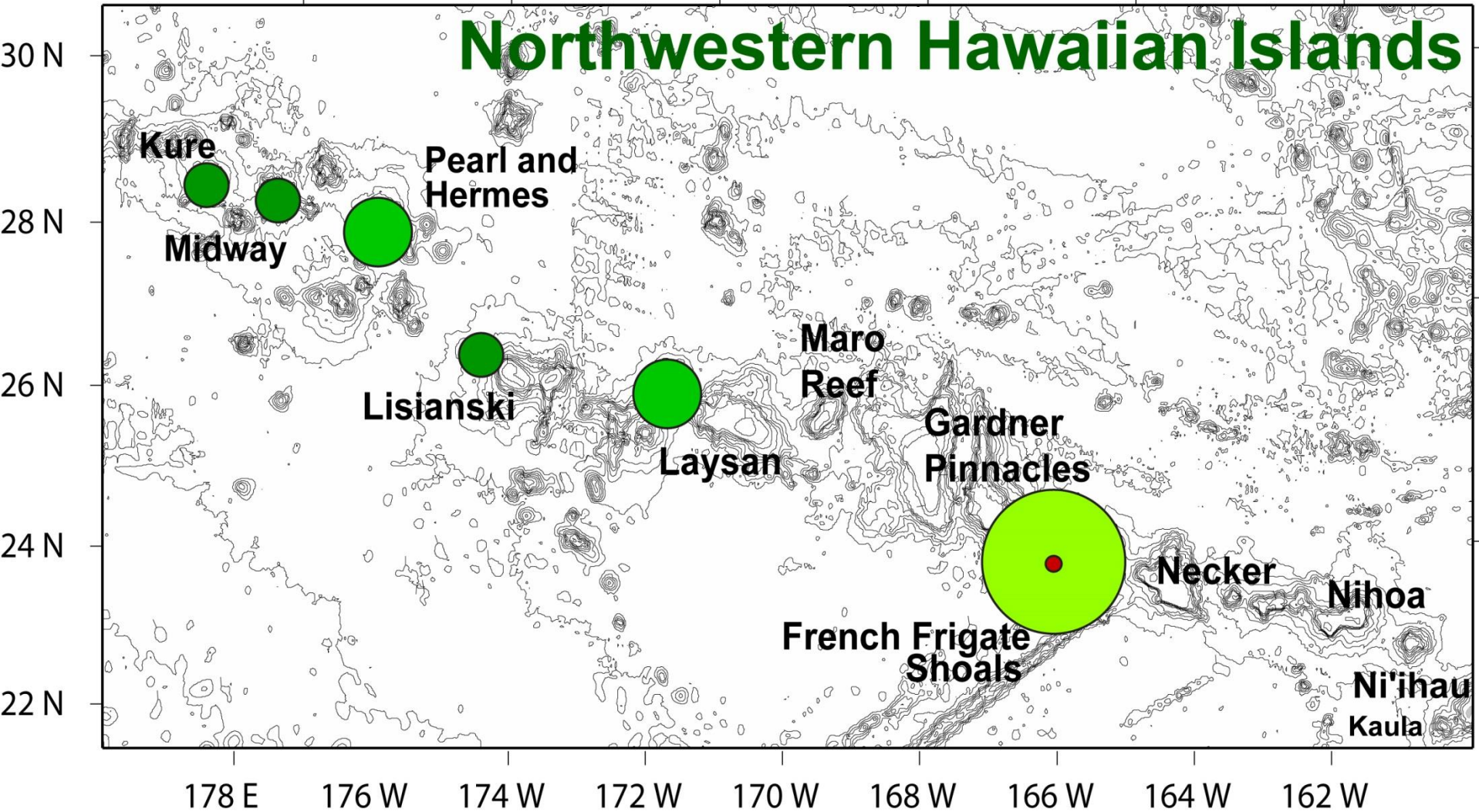


Figure 1. Hawaiian Archipelago

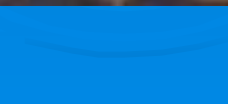
Northwestern Hawaiian Islands





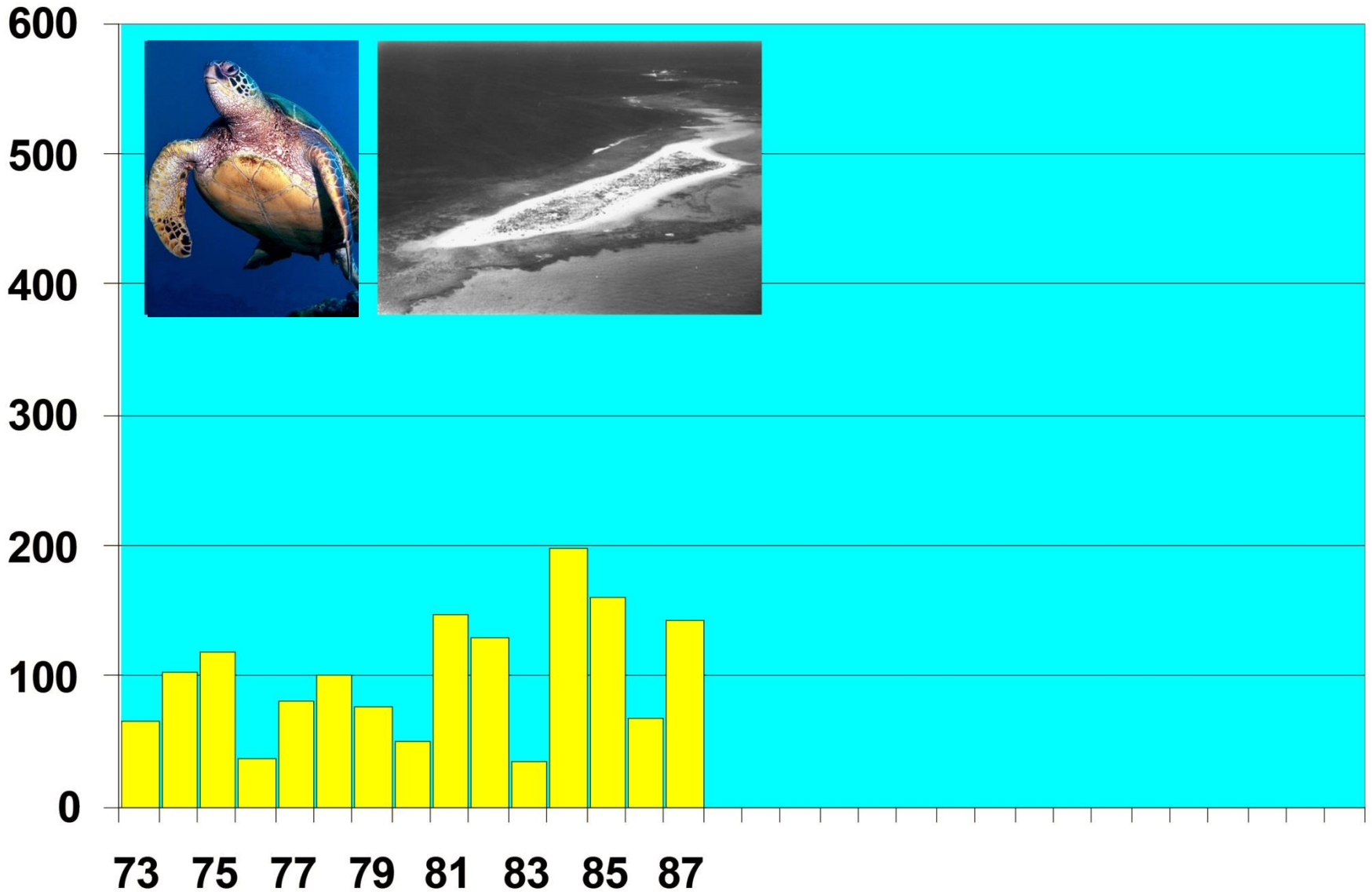




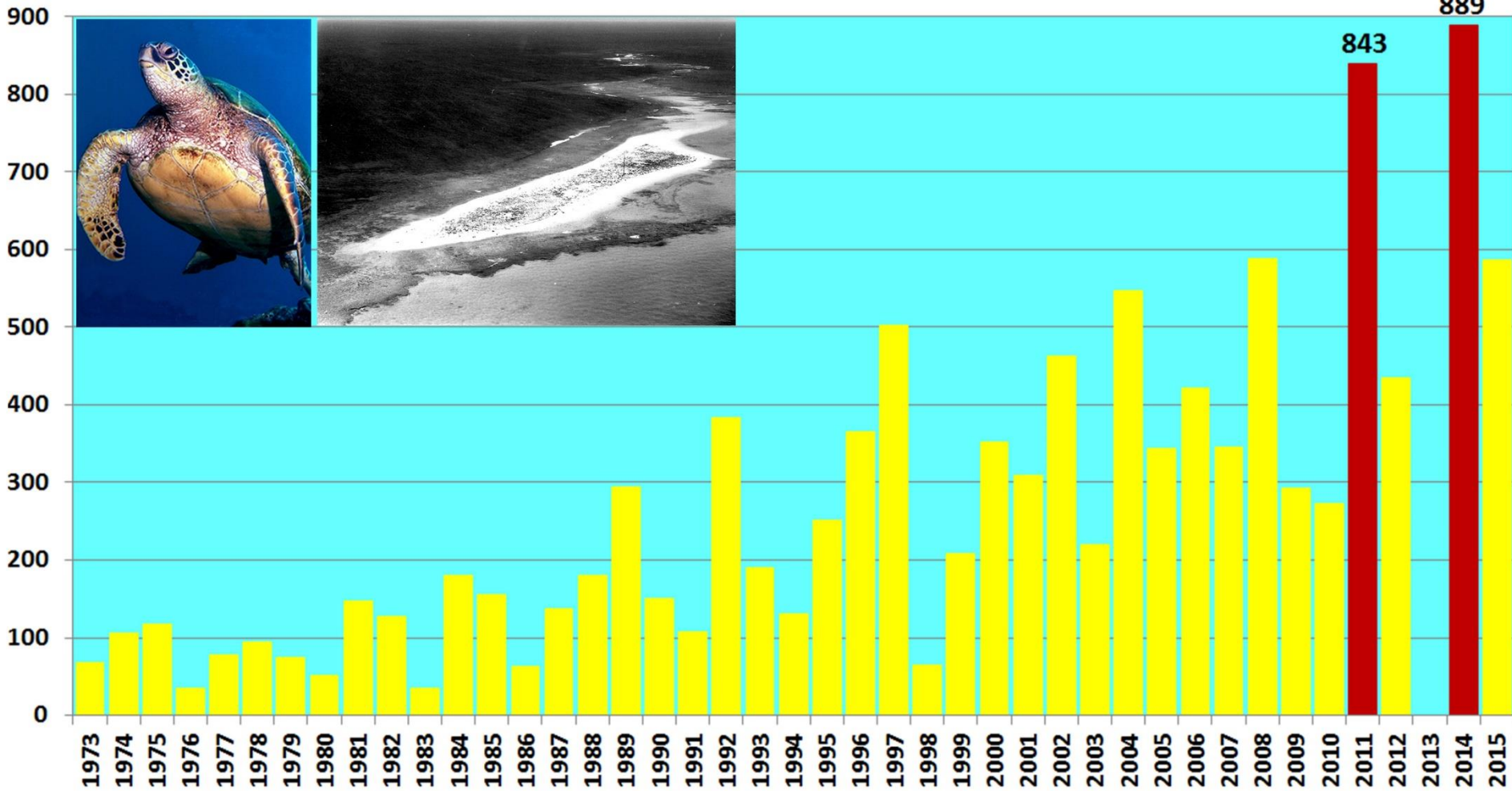




GREEN TURTLES NESTING AT EAST ISLAND

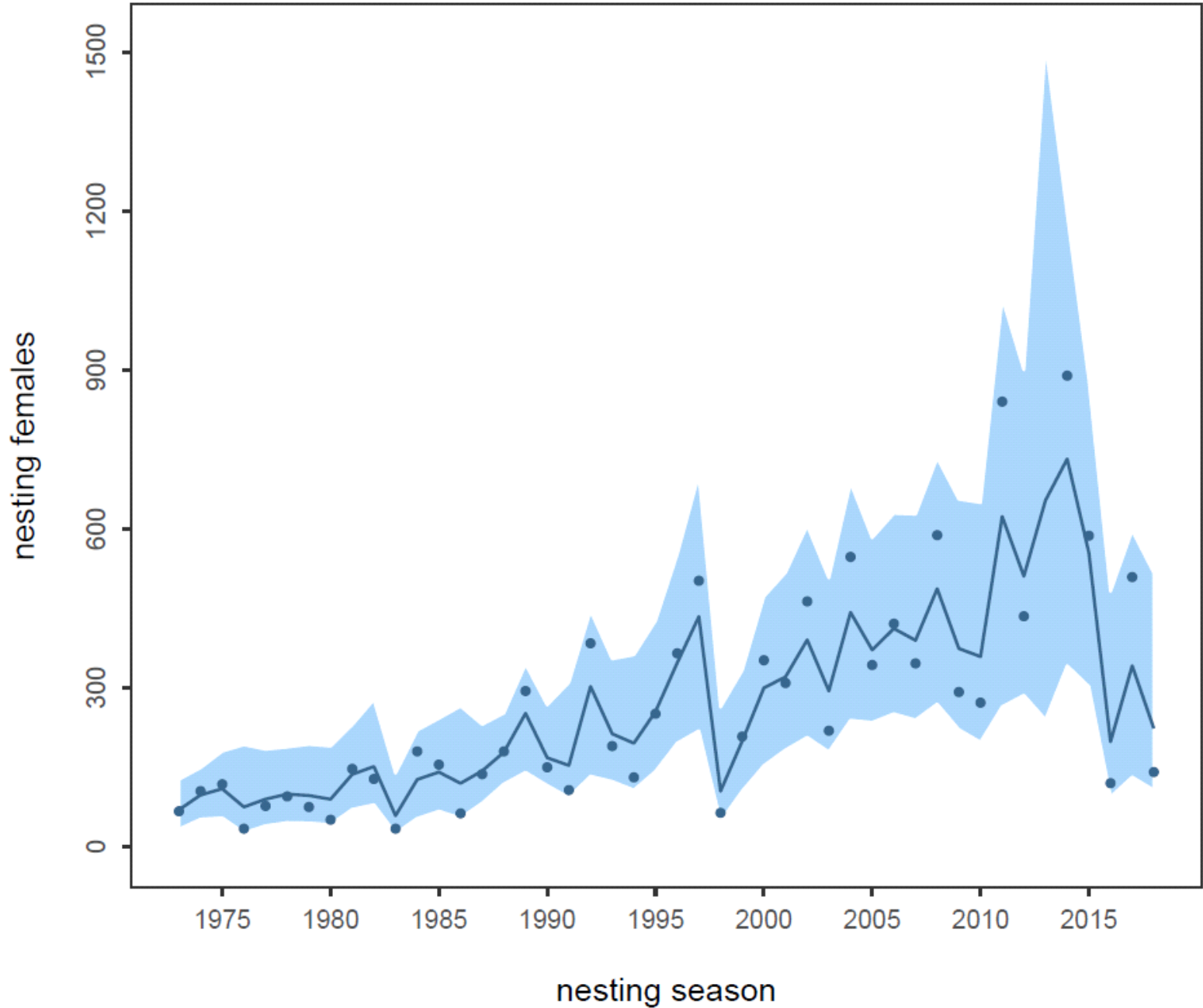


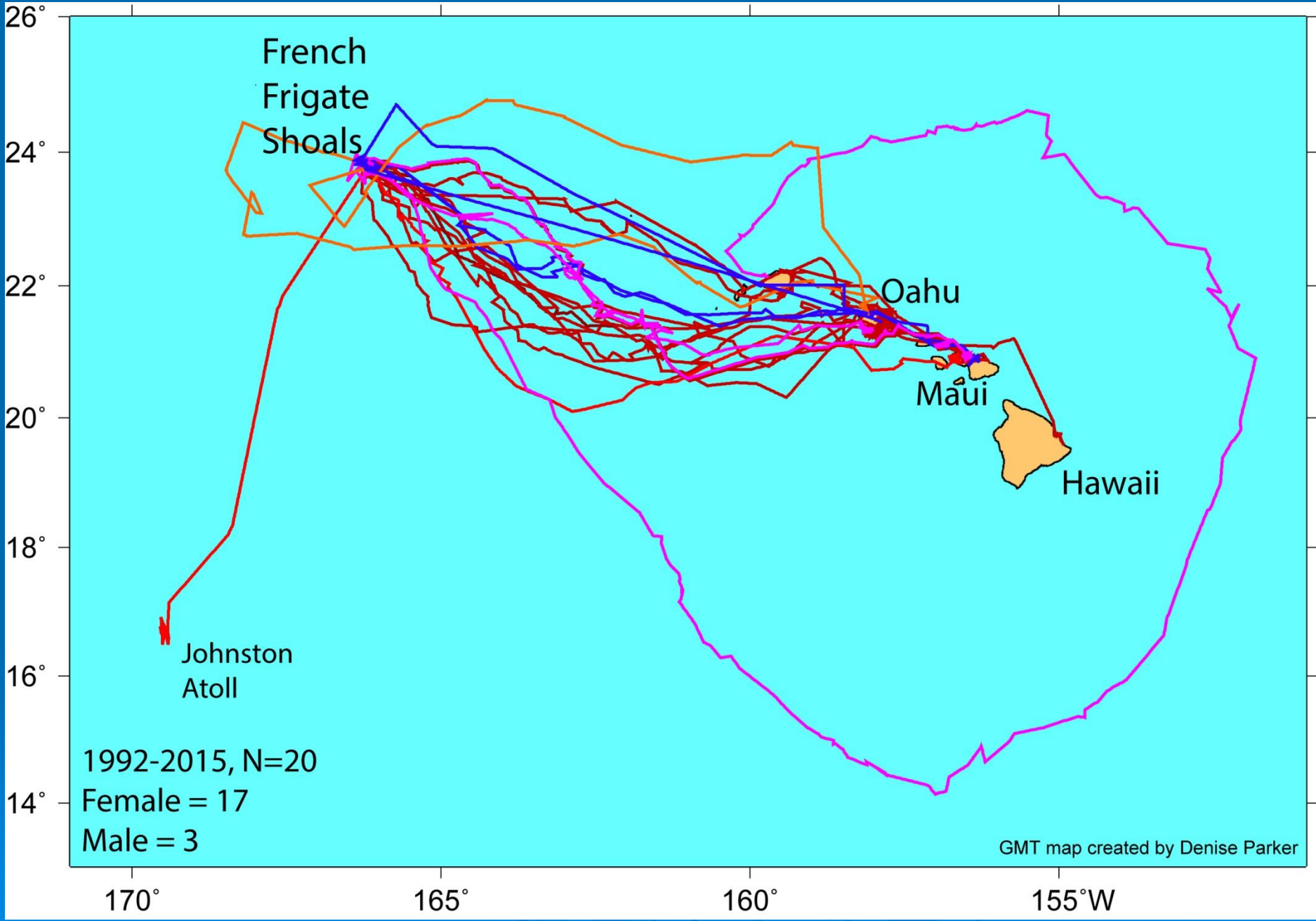
Green turtles nesting at East Island, French Frigate Shoals, 1973-2015



ANNUAL TREND FOR 42 SEASONS

East Island green turtle rookery
Gompertz state-space model trend





KAUAI

Lihue

To Toronto (Can)...4750 m

OAHU

Honolulu

MOLOKAI

Lahaina

MAUI

Kahului

LANAI

To Los Angeles (U.S.A)...2560 m

NIHAU

To Tokyo (Jap)...3850 m

To Sydney (Aus)...5310 m

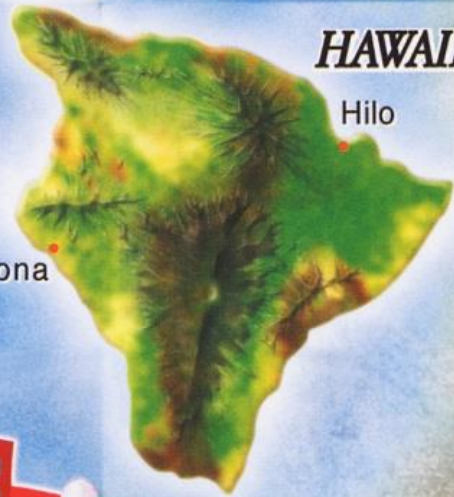
KAHOOLAWE

HAWAII

Hilo

Kona

HAWAIIAN ISLANDS







Changing Behaviors



10 5 '99





Cleaning Behavior



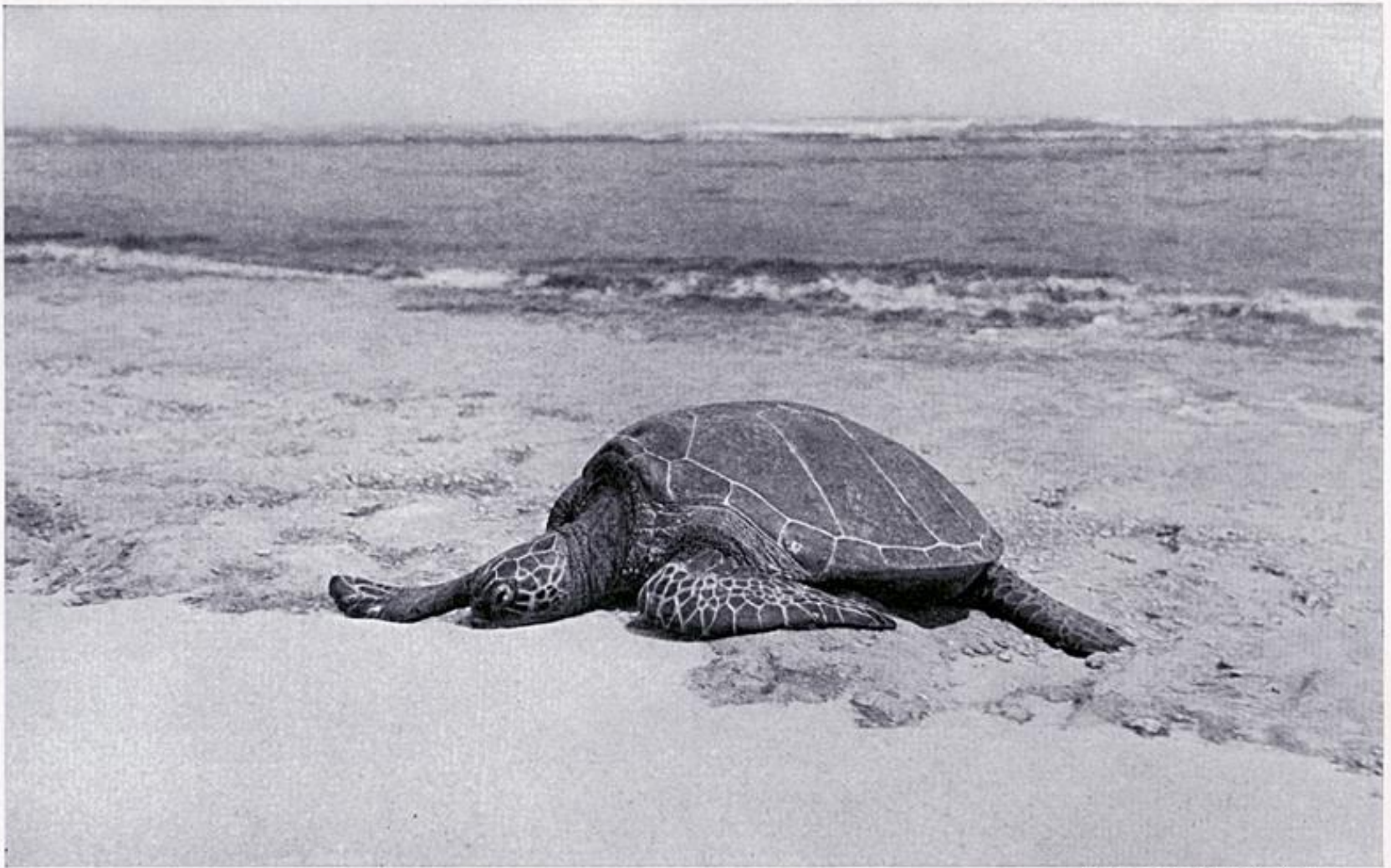


Beauty Rest







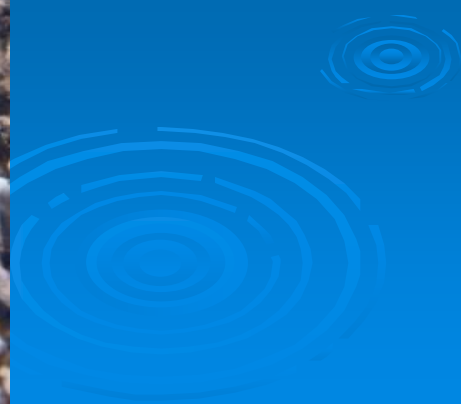


Photograph by Alexander Wetmore

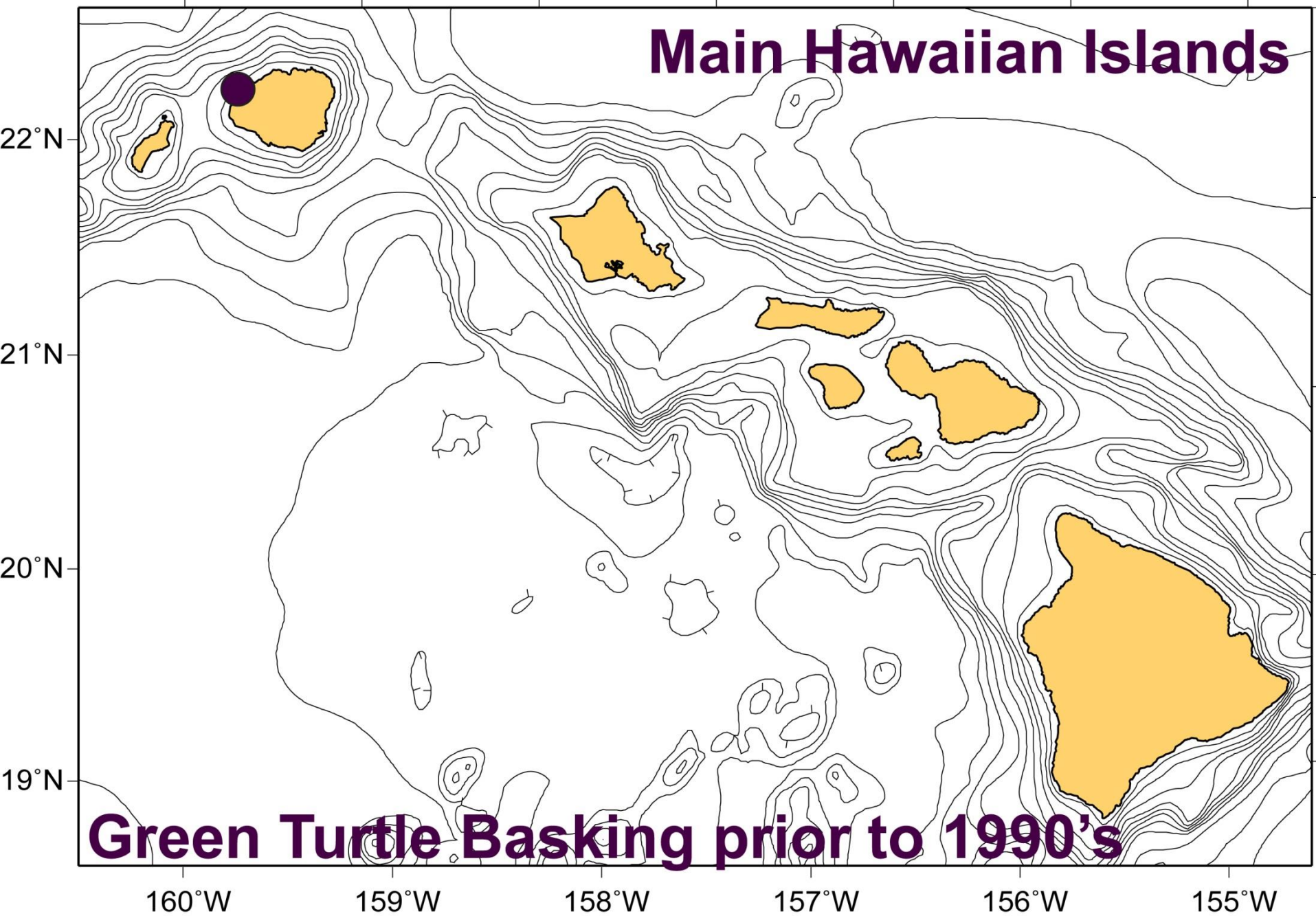
A GREEN TURTLE ASLEEP ON A SANDY BEACH: LISIANSKY ISLAND

These grotesque creatures browse in submarine fields of algae until hunger is satisfied, and then crawl heavily out to sprawl in the sand, safe from enemies in the sea. On one occasion, the author, while walking 300 yards along the beach on Lisiansky Island, counted 80 of these creatures from fifteen inches to four feet in length. Others, feeding a few yards offshore, were hidden by ripples on the water and so escaped this casual census. Their only enemies seem to be sharks.





Main Hawaiian Islands



Main Hawaiian Islands

22°N

21°N

20°N

19°N

Green Turtle Basking as of 2015

160°W

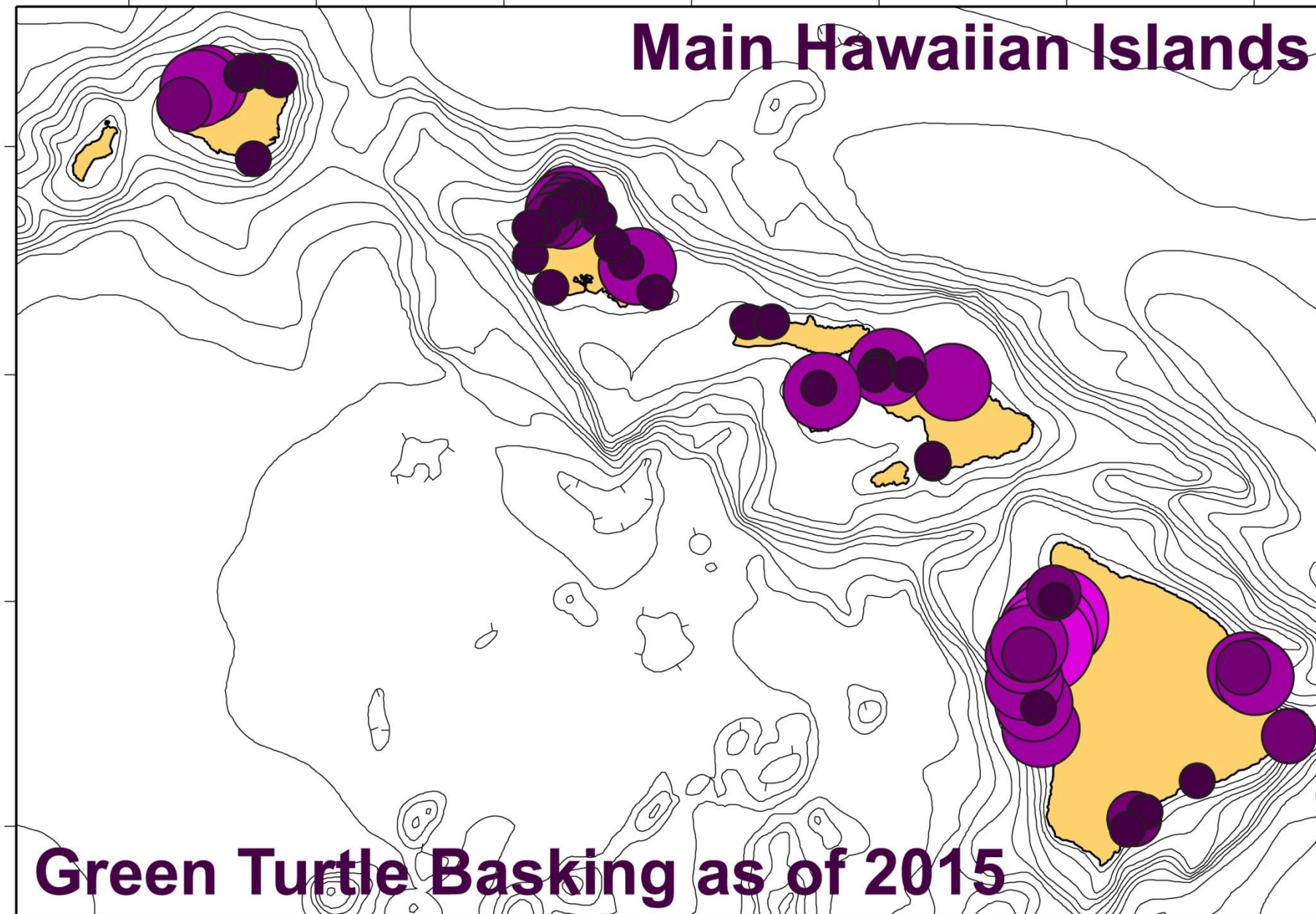
159°W

158°W

157°W

156°W

155°W



Main Hawaiian Islands

22°N

21°N

20°N

19°N

Green Turtle Nesting 1965-1980's

160°W

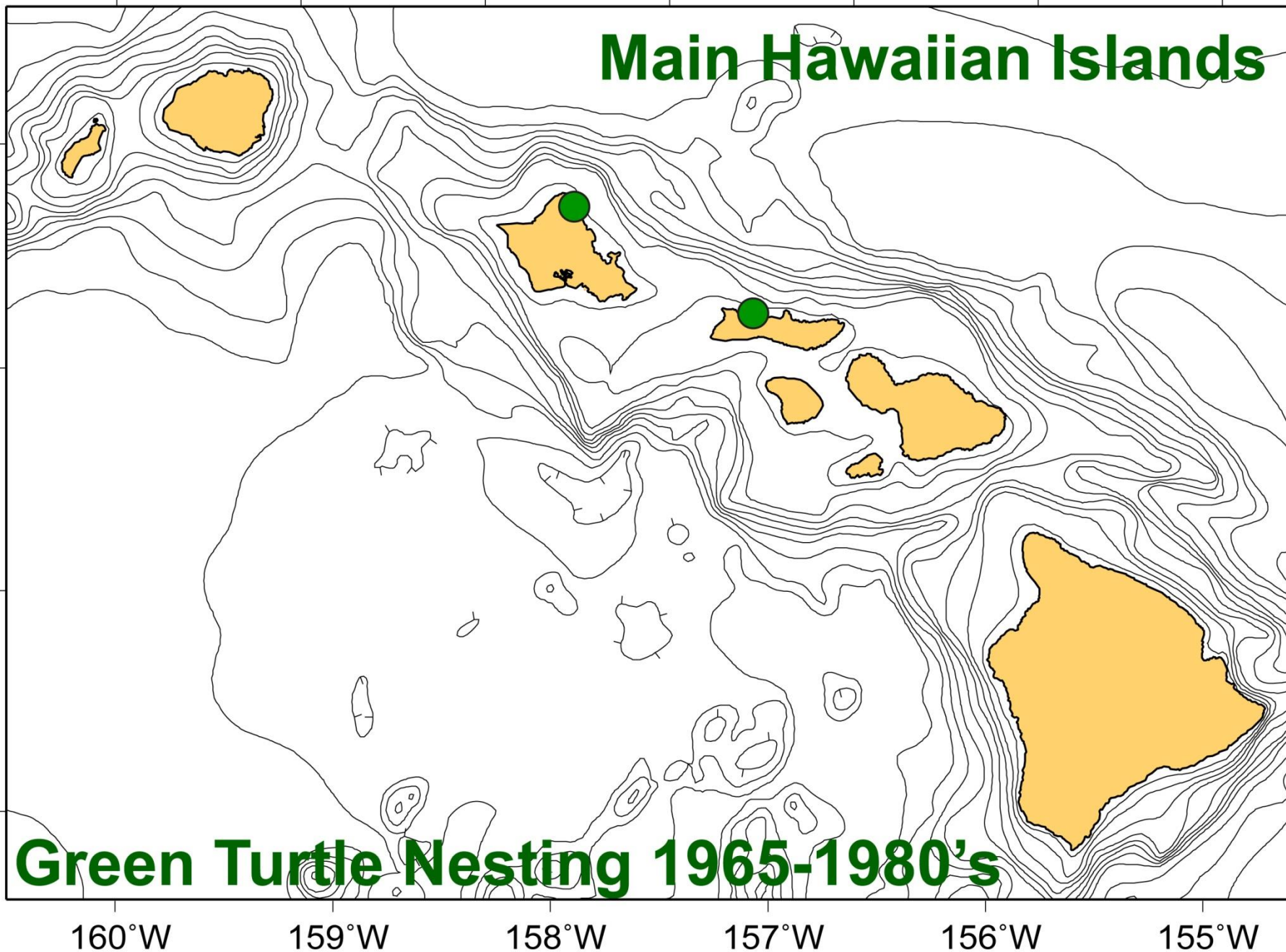
159°W

158°W

157°W

156°W

155°W



Main Hawaiian Islands

22°N

21°N

20°N

19°N

Green Turtle Nesting 1990-2015

160°W

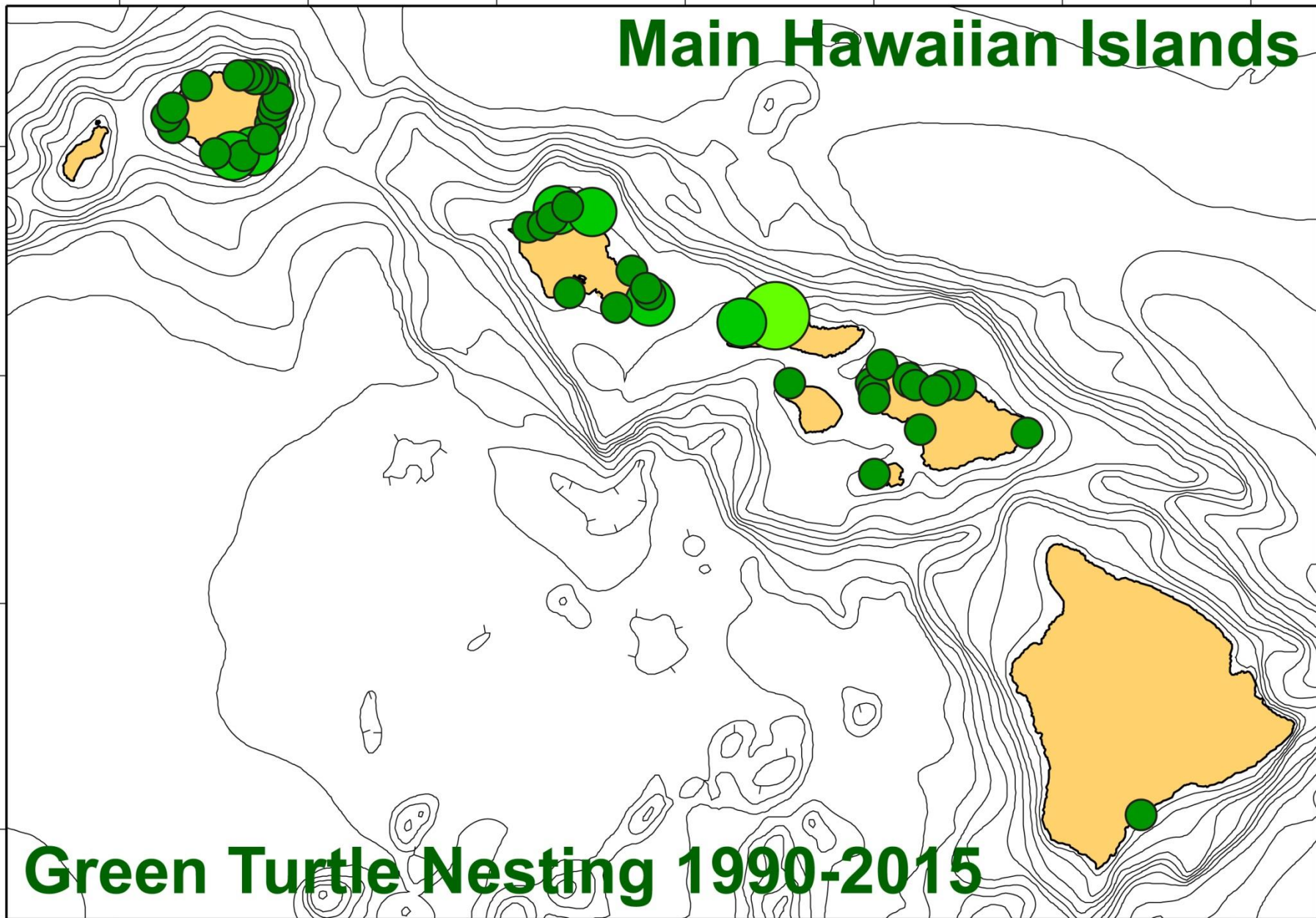
159°W

158°W

157°W

156°W

155°W





POLYNESIAN CANOE TOURS







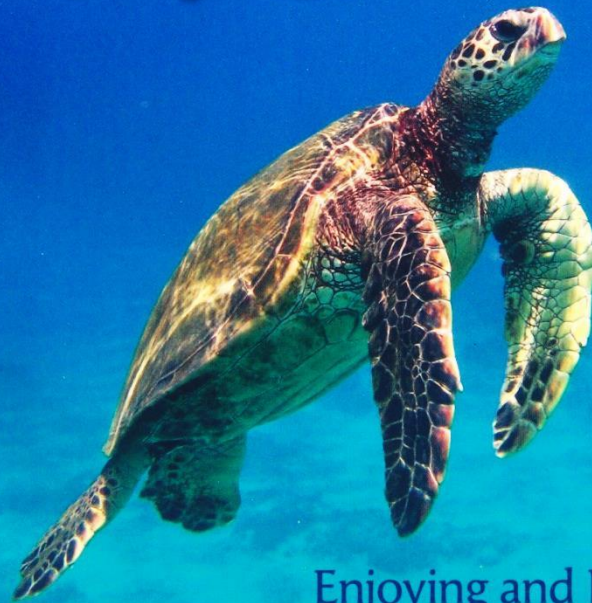




The background of the cover is an underwater photograph. At the top, a person is seen swimming near the surface, their head and arms visible. Below them, a large sea turtle swims towards the right. The water is clear and blue, with light filtering through from above. The overall composition is serene and focuses on marine life.

THE BOOK OF

HONU



Enjoying and Learning
about Hawai'i's Sea Turtles

PETER BENNETT AND URSULA KEUPER-BENNETT



The Shifting Sands of Time

Itsahonuworldinhawaii@hotmail.com