

2 of 3

MARBLE COMPOSITION®

NAME **GEORGE BALAZS**

SUBJECT **MAUNA LANI**

E-MAIL **gbalazs@honalab.nmfs.hawaii.edu**

AMERICAN SCHOLAR

100 Sheets (200 Pages)
9 3/4" x 7 1/2" (24.7 cm x 19.0 cm)

Oct 6 - 9, 2006

American Scholar®

6538 12100 0

Marine Turtle Research
NOAA NMFS PIFSC
2570 Dole Street
Honolulu, Hawaii 96822

Isle of Hawaii



7/4/07 TID 18th N = 7

Keoki Balazs

10-29 TO 11-07

PAGE 172 Honu Scientist

The Costco of Knowledge

MR

Report for SPOT tag 06S0266 on 26-Sep-2006 at 20:08:00

SPOT Time: 27-Sep-2006 at 03:04:24
Spot5Host version: 5.02.0001
SPOT5ware version: 5.02

SPOT belongs to:
Dr. Jeffrey Polovina
JIMAR
c/o NMFS
2570 Dole Street
Honolulu, HI 96822

ARGOS IDs + specifics for 4 spot 5s used on SLPBnd trans released 9.8 Miles N. of Kawai From Pride of Hawaii
68334
+68330 +68335 +50144

Extended Argos PTT number: 68334 or 06AC90E1 Hex. Uplink/LUT number: 6834/225
transmitting with fast repetition rate of 43.00 seconds
and slow repetition rate of 88.00 seconds.
The transmission will start after 1 consecutive dry 1/4-sec wakeups.
The current conductivity threshold is: 50 (default)
The default conductivity threshold is: 50
It checks for dry (to start transmitting) every 0.25 seconds
and switches to its slow repetition rate after 20 successive dry transmissions
Transmissions will suspended after being dry for never hours,
and resume after being wet for 10 seconds.

Total Transmits since 01-Aug-2006 = 384
Maximum transmissions per day = 300

Transmit on these hours:

1 - 4, 8, 9, 14 - 17, 21, 22,

Transmit on these days:

- Jan: 2, 4, 6, 8, 10, 12, 14, 16, 18, 20, 22, 24, 26, 28, 30,
- Feb: 1, 3, 5, 7, 9, 11, 13, 15, 17, 19, 21, 23, 25, 27,
- Mar: 1, 3, 5, 7, 9, 11, 13, 15, 17, 19, 21, 23, 25, 27, 29, 31
- Apr: , 2, 4, 6, 8, 10, 12, 14, 16, 18, 20, 22, 24, 26, 28, 30,
- May: 2, 4, 6, 8, 10, 12, 14, 16, 18, 20, 22, 24, 26, 28, 30,
- Jun: 1, 3, 5, 7, 9, 11, 13, 15, 17, 19, 21, 23, 25, 27, 29,
- Jul: 1, 3, 5, 7, 9, 11, 13, 15, 17, 19, 21, 23, 25, 27, 29, 31
- Aug: , 2, 4, 6, 8, 10, 12, 14, 16, 18, 20, 22, 24, 26, 28, 30,
- Sep: 1, 3, 5, 7, 9, 11, 13, 15, 17, 19, 21, 23, 25, 26, 28, 30,
- Oct: 2, 4, 6, 8, 10, 12, 14, 16, 18, 20, 22, 24, 26, 28, 30,
- Nov: 1, 3, 5, 7, 9, 11, 13, 15, 17, 19, 21, 23, 25, 27, 29,
- Dec: 1, 3, 5, 7, 9, 11, 13, 15, 17, 19, 21, 23, 25, 27, 29, 31

Time at temperature Histograms are collected using the following bins:

- bin 1: -40 to 10.0
- bin 2: 10.1 to 15.0
- bin 3: 15.1 to 17.0
- bin 4: 17.1 to 19.0
- bin 5: 19.1 to 21.0
- bin 6: 21.1 to 23.0
- bin 7: 23.1 to 25.0
- bin 8: 25.1 to 27.0
- bin 9: 27.1 to 29.0
- bin 10: 29.1 to 30.0
- bin 11: 30.1 to 40.0
- bin 12: 40.1 to 60.0

Histograms start at the following hours:
1, 13,

Haulout Statistics are NOT being collected

System Parameters:

```

1906080910FF0608040200AC01603201
0AEE06AC90E105E805FF303653303236
3600060801012C018063C31E01140005
320020020201023E0255026B02810296
02AB02BE02D102DA0329000300000000
2AAAAAAAA0555555555555552AAAAAAAA
2AAAAAAAA1555555555555552AAAAAAAA
2B5555552AAAAAAAA155555555555555
44722E204A65666672657920506F6C6F
76696E610D0A4A494D41520D0A632F6F
204E4D46530D0A3235373020446F6C65
205374726565740D0A486F6E6F6C756C
752C2048492039363832320D0A000000
00000000000000000000000000000000
00000000000000000000000000000000
000000000000000000000000A6AC1927

```



PD

Report for SPOT tag 0650266 on 26-Sep-2006 at 20:08:00

SPOT Date: 27-Sep

SPOT Version: 1.0.0

SPOTware version: 1.0.0

SPOT Belongs to:

Dr. Jeffrey Powell

SPOT



Copied
to SKRM

Monday
11/6/06

Maui
Lana Capture

No longer
needed
Size I
SPTAG
YQ21

new
MOTO#
#10

SCL 11/406
31.2 cm

(45267C3639 LH
45241D2D03 RH

#11 28.8 cm

(4527601D38 LH YQ29

45245E537D RH

#9 33.0 cm

(452830577B LH WE19

45254E0E0D RH

#8 33.9 cm

(452428001C LH WE18

4529010543 RH

Fit Tagged by GB + 8,9 & 11
Fit training by Cece Gaspar,
w/ Tomomi SAITO (PNPA sibling
(+ Bob Morris & Kendal Kang).

JAN 2007

N=45



Chimaine Pouteau
Public Relations Manager

700 Bishop Street, Suite 900
Honolulu, Hawaii 96813
Tel 808.527.3946
Fax 808.527.3820
e-mail cpouteau@ncl.com
www.ncl.com



Asap
Diane AKO sent

Tim McRobert
Photojournalist
Direct 808.479.4858
Fax 808.847.FAX8
Email tmcrobert@khnl.com
www.khnl.com



KHNL-TV / KFVE-TV
315 Sand Island Access Rd.
Honolulu, Hawai'i 96819-2295
Raycom Media



WELCOME ABOARD THE PRIDE OF HAWAII

MY NAME IS
Miss D. Hughes-Foley

Please contact me if there is anything I can do to make your cruise more pleasurable.

Dial _____ or (00)

Enjoy Freestyle Cruising

Receipt

Handwritten notes at the bottom of the page, including "for topped by CP + 8, 2, 11" and "w/ to mom's 2nd (Pina) 2nd w/ (+ 2nd Maria & Kenda) (Kendy)".

Pictures 1-31-07

Pride of Hawaii
Bar Dept. John Schriber
Laura Mulbreath
700 Bishop St.
Suite 900
Honolulu HI



Pride of Hawai'i Inaugural Season

Welcome aboard the M/S Pride of Hawai'i, the newest addition to the NCL America family.

Our U.S.-flagged ships with U.S. crews that sail primarily from Hawai'i combine the spirit of Aloha, the freedom of Freestyle Cruising and a world of year-round cruising choices in Hawai'i.

M/S Pride of Hawai'i is the third in a series of U.S.-flagged cruise ships built for the Hawaiian market. At just over 93,500 gross registered tons, carrying up to 3,000 passengers, and costing over half a billion dollars, M/S Pride of Hawai'i is the largest and most expensive U.S.-flagged passenger ship ever built.

M/S Pride of Hawai'i employs a crew of over 1,000, bringing the total seagoing workforce of NCL's U.S.-flagged fleet to some 4,000.

The M/S Pride of Hawai'i features a vast array of accommodations including two luxurious Garden Villas with their own private gardens and sun decks, 10 Courtyard Villas sharing a private courtyard, pool and sundeck on Deck 14, and a spectacular top-of-the-ship Owner's Suite.

The newest NCLA ship also features multiple public rooms, 10 restaurants and many impressive onboard amenities.

Freestyle Dining

Room Service

For whenever you're hungry

Aloha Nui Café

Buffet-style

Alizar Restaurant

Breakfast

Blue Lagoon

Continental Breakfast

Blue Lagoon

Lite bites/burgers

Aloha Nui Café

Buffet-style

Alizar Restaurant

Lunch

Topsiders Grill

Casual poolside dining

Sushi Bar in Jasmine Garden*

It doesn't get any fresher

Teppanyaki in Jasmine Garden*

Authentic Japanese dinner experience

Aloha Nui Café

Dinner buffet

Jasmine Garden*

Fusion of exotic Asian flavors

Le Bistro*

French cuisine that's magnifique

Grand Pacific Restaurant

Five-course dining. *Last seating: 10:00pm*

Cagney's Steakhouse*

Grilled perfection, elegant setting

Papa's Italian Kitchen

Now that's Italian! *Last seating: 10:30pm*

Shabu Shabu in Jasmine Garden*

Authentic Japanese dinner experience

Paniolo Tapas & Salsa

Dining with a kick

Blue Lagoon

Late night snacks

*This little star means that these restaurants charge a cover, but the cost is really minimal (and for what you get, you'll find it's well worth it). Make reservations for our specialty restaurants at the Reception Desk from 8am-10pm or via telephone at #6720 or 6704 from 8am-4pm. Seating in the Alizar & Grand Pacific Dining Rooms are on a first come, first served basis.

A fee of \$5.00 per person will be charged for reservations that haven't been cancelled 24 hours in advance.

24 hours

5:00am-10:00am
Deck 12, Mid

7:00am-9:00am
Deck 6, Mid

6:30am-11:00am
Deck 8, Mid

11:00am-4:30pm
Deck 8, Mid

11:30am-3:00pm
Deck 12, Mid

12:00pm-1:30pm
Deck 6, Mid

2:00pm-5:30pm
Deck 12, Mid

5pm/7pm/9pm
Deck 7, Mid

5pm/7pm/9pm
Deck 7, Mid

5:30pm-9:00pm
Deck 12, Mid

5:30pm-Close
Deck 7, Mid

5:30pm-Close
Deck 6, Mid

5:30pm-Close
via Deck 7, Aft

5:30pm-Close
Deck 13, Mid

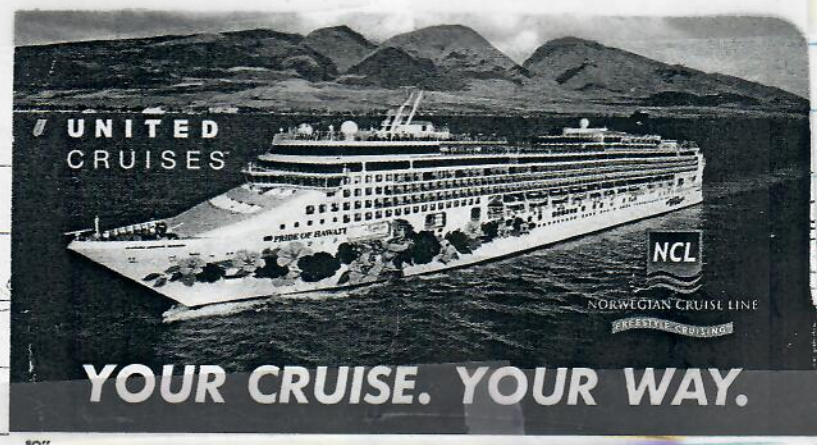
5:30pm-Close
Deck 12, Aft

6:30pm/8:30pm
Deck 7, Mid

6:00pm-9:30pm
Deck 8, Mid

10:30pm-5:00am
Deck 8, Mid

96) NCL ^{W P.O.H} Pride of Hawaii ^{Mano Rico}
 1/15/07 Monday Depart Port 8pm Room 8503
 Board w/ 45 turtles 545 pm
 1/16/07 Tuesday Arrive Hilo ~ 7AM
 Depart Hilo Sunset 1PM - 4:30PM
 2 on deck
 Release ⁴⁵ Starboard side Deck 7 (60') 9-9:10pm
 3 baskets 15 each. LOCATION:
 up-down. Proceeding to Kilauea
 Lowaflow. Very spectacular.
 Departed ~ 11pm for Kahului Maui
 1/17/07 ARRIVE Kahului SUNRISE
 Wednesday ^{GB} Flew Home to Honolulu depart
 12:30 PM Hawaiian AIR.



20H
94

1-16-07 Tuesday

PORT OF
HILO LAB
GB
Maree Rec

LAST FOUR OF OLD PIT Left Hind size #1
New ~~NO~~ INSCRIPTION

NE 45

ABOARD THE
"PRIDE
OF HAWAII"
NEL

- 1 374C / ZK 51 ~~data left hind~~
- 2 3829 / ZK 53 ~~in left hind~~
- 3 5150 / ZK 54
- 4 6E7B / ZK 55
- 5 0A40 / ZK 56
- 6 270F / ZK 57
- 7 6622 / ZK 58
- 8 ~~481C~~ / ZK 59 * Tail swollen
- 9 3A70 / ZK 60
- 10 1F27 / ZK 61
- 11 7840 / ZK 62
- 12 ~~74107~~ / ZK 63 * tail swollen
- 13 033D / ZK 64
- 14 3D5C / ZK 65
- 15 200A / ZK 68
- 16 0515 / ZK 67
- 17 1C25 / ZK 66 * tail swollen
- 18 311D / ZK 69 * tail swollen ~~74107~~
- 19 701B / ZK 70
- 20 5E61 / ZK 72
- 21 4B21 / ZK 73
- 22 2755 / ZK 75
- 23 5573 / ZK 71
- 24 2C1A / ZK 74

LRB
GB
More Rice

1-16-07 ~~Tuesday~~

Aboard the
USCGC "PRIDE OF HAWAII"

Left hind new

25	3A78 3F31	OLD PIT	ZK 76	
26	2C64		ZK 77	ALL 45
27	140A		ZK 78	Released 9:00 PM 1-16-07
28	2149		ZK 79	Lat 19-20.05° N
29	164D		ZK 80	Long 154-51.9° W
30	472E		ZK 81	
31	5F25		ZK 82	Sea Temperature = 24°C
32	5E1E		ZK 83	
33	276E		ZK 84	
34	3239		ZK 85	* tail swollen
35	4A17		ZK 86	
36	6C49		ZK 87	
37	6F1E		ZK 88	
38	6F20		ZK 89	* close to edge / tail swollen
39	5F64		ZK 90	
40	2A45		ZK 91	
41	4556		ZK 92	
42	191E		ZK 96	* tail swollen
43	111F		ZK 95	
44	3A46		ZK 97	
45	3649		ZK 98	* tail swollen

END
N=45

ALL Released 9:10 PM
Tuesday, EAST Hawaii

Cruise ship to release 45 turtles

Electronic tags to track their movements in breeding program finale

BY JAN TENBRUGGENCATE
Advertiser Kaua'i Bureau

Forty-five green sea turtles were to be released from a cruise ship into the deep sea off the east side of the Big Island last night in a collaboration between NCL America and NOAA's Pacific Islands Fisheries Science Center.

The 5-month-old turtles, which have been raised at Sea Life Park, are the result of the park's captive

breeding program. Each will have a small electronic tag that will allow their identification by special hand-held scanners in the future.

The animals will be released from the NCL ship *Pride of Hawaii* under the direction of NOAA biologist George Balazs.

It is the second release of turtles from an NCL America ship. In October 2006, four larger turtles were released carrying satellite tags.

That project, done in conjunction with Hawai'i Preparatory Academy, NOAA and Sea Life

Park, tracked the turtles, and their movements can be viewed on the HPA Web site at www.hpa.edu/turtle.html. The four clearly did not hang out together.

One of the turtles left its release point north of Kaua'i, swam to the north shore of Kaua'i, cruised around the west side of the island, took a big curving course to the south side of O'ahu, then headed north from Makapu'u for about 100 miles, and then west. At last report, it was north of a point midway between Kaua'i and Nihoa.

Another turtle passed south of Nihoa and was far west of Kaua'i at last check. A third headed north from Kaua'i, then cut directly south and appeared to make a stop at Nihoa before heading farther southwest. The fourth headed directly north from its release point, then south to the east side of Kaua'i, east along the southern shore of O'ahu and was last cruising the waters of west Moloka'i.

Reach Jan TenBruggencate at jant@honoluluadvertiser.com or (808) 245-3074.

JAN 17, 2007 THA B3

The release of 45 small 5-month old Hawaiian green turtles, captive bred and nurtured at Sea Life Park, will be conducted 3-5 miles off the east side of the Big Island on the evening of Tuesday 1/16/07. The release will be overseen by George Balazs, Marine Turtle Biologist with the NOAA Pacific Islands Fisheries Science Center, National Marine Fisheries Service. The release will take place from the deck of the NCLA passenger liner, Pride of Hawaii.

The turtles to be released are currently in seawater rearing tanks at the NOAA secure research facility at Kewalo Basin on Oahu awaiting their departure. The turtles were reared at Sea Life Park over the past 5 months as part of a collaborative research project on temperature dependent sex determination in the Hawaiian green turtle. Dr. Thane Wibbels, a world authority on sex determination in turtles with the University of Alabama at Birmingham, served as the lead scientist for this project. The study has now been successfully completed for the 2006 nesting season, hence the turtles are ready to be released into their natural environment to begin their journey in life.

The turtles are the product of Sea Life Park's highly successful captive breeding program conducted annually since the late 1970's. The turtles are all of known Hawaiian genetic stock composition. They are vigorous, healthy, and suitable for release into off shore pelagic waters where they would normally live at this small size (from 1 ounce hatchlings to 15/lb juveniles). The 45 turtles have each been tagged by NOAA with tiny Passive Integrated Transponders (PIT tags) for long term individual identification. A special hand-held scanner is needed at close range to detect the tags, such as when they may be found nesting ashore 20 or more years from now. Electronic tags that transmit to earth-orbiting satellites are not being put on these turtles because the turtles are too small for this technology. Satellite tags were put on four larger captive-bred turtles released by NOAA and Sea Life Park from the NCLA Pride of Hawaii in October 2006. Results of that on-going research project can be viewed at <www.hpa.edu/turtle.html>.

The 45 turtles will be taken aboard the Pride of Hawaii in Honolulu on Monday afternoon 1/15/07. The ship will then depart at 8pm and dock in Hilo at about 7am Tuesday 1/16/07. The turtles will remain on the ship in Hilo. From time to time they will be "exercised" and fed in a special portable sea water pool taken aboard the ship for this purpose. The ship will depart from Hilo that same day in the late afternoon and proceed to an area off the east coast of the Big Island for passengers to view the volcano's lava flow. Along that leg of the trip the ship will stop 3-5 miles from shore and the turtles will be carefully lowered over the side in baskets and safely released into the sea.

If you have any questions, please contact me at the address below, or call my cell phone, 286-2899. Best Regards, George Balazs

77

George H. Balazs, Leader
Marine Turtle Research Program
NOAA, National Marine Fisheries Service
Pacific Islands Fisheries Science Center
2570 Dole Street
Honolulu, Hawaii 96822-2396 USA
Tel: (808) 983-5733
Fax: (808) 983-2902

Pacific Business News (Honolulu) - January 17, 2007
<http://pacific.bizjournals.com/pacific/stories/2007/01/15/daily22.html>

PACIFIC BUSINESS NEWS

BUSINESS PULSE SURVEY: [How much of a raise are you getting this year?](#)

NCL aids turtle research

Pacific Business News (Honolulu) - 7:08 PM HAST, Tuesday
Norwegian Cruise Line has again helped the National Oceanic & Atmospheric Administration release endangered turtles into the wild.

The NOAA Pacific Islands Fisheries Science Center used NCL's cruise liner Pride of Hawaii to release 45 small Hawaiian green turtles Tuesday evening.

Captive bred and nurtured at Sea Life Park, then held in seawater rearing tanks at Kewalo Basin, the 5-month old turtles were released off the eastern coast of the Big Island.

The release was overseen by George Balazs, marine turtle biologist with the National Marine Fisheries Service.

The turtles were reared at Sea Life Park in a research project on the effect of temperature on sex determination of the turtles. The study has now been successfully completed for the 2006 nesting season, hence the turtles were ready to be released into their natural environment.

The turtles were tagged with tiny passive integrated transponders for long-term individual identification. A special hand-held scanner is needed at close range to detect the tags, such as when the turtles may be found nesting ashore 20 or more years from now. Electronic tags that transmit to earth-orbiting satellites are not being put on these turtles because the turtles are

too small for this technology. Satellite tags were put on four larger captive-bred turtles released by NOAA and Sea Life Park from the Pride of Hawaii in October.

Honu Return To Sea

Jan 17, 2007 07:18 PM

(KHNL) - Hawaiian Green Sea Turtles are an important part of Hawaii's island culture, and history. KHNL brings you the story of these amazing creatures, and what one group is doing to help them.

Sharks and humans are the only known predators of honu. People have played a large role in bringing the species to the brink of extinction.

"Back in the seventies, turtles were taken as food for peoples homes, they were sold in restaurants, for tourist dinners, said George Balazs, NOAA Sea Turtle Biologist. "Simply too many of them were taken during those years."

In 1978, Balazs was instrumental in getting Hawaiian Green Sea Turtles listed as a threatened species, making it illegal to kill, capture or harass them.

"The protection afforded by the Endangered Species Act has seen one of the marvels of modern wildlife conservation. The restoration of the green turtle in the hawaiian islands has been phenomenal," said Balazs.

For 34 years, Balazs has studied Sea Turtles and has been committed to their recovery. Now, he's taking a very hands on approach. Tuesday night, onlookers aboard the Pride of Hawaii Cruise Ship bid aloha to 45, five-month old honu.

"Its time for the sea turtles to go back to the sea," said Balazs.

They were born at Sea life Park, but their ancestry has been traced to Hawaiian waters. Their ride aboard the ship is over, but the journey is just beginning for these young turtles. This was the second time turtles raised at Sea Life Park have been released from the ship. Balazs said the sea turtle population is recovering, and credits the Endangered Species Act, and education efforts.



George Balazs



<http://www.khnl.com/global/story.asp?s=5954406&ClientType=Pri...>



Posted on: Wednesday, January 17, 2007

Cruise ship releasing 45 green sea turtles off Big Isle

By [Jan TenBruggencate](#)
Advertiser Kaua'i Bureau

Forty-five green sea turtles were to be released from a cruise ship into the deep sea off the east side of the Big Island last night in a collaboration between NCL America and NOAA's Pacific Islands Fisheries Science Center.

The 5-month-old turtles, which have been raised at Sea Life Park, are the result of the park's captive breeding program.

The animals will be released from the NCL ship Pride of Hawai'i under the direction of NOAA biologist George Balazs.

It is the second release of turtles from an NCL America ship. In October, four turtles were released carrying satellite tags.

That project, done in conjunction with Hawai'i Preparatory Academy, NOAA and Sea Life Park, tracked the turtles, and their movements can be viewed on the HPA Web site at www.hpa.edu/turtle.html.

One of the turtles left its release point north of Kaua'i, swam to the north shore of Kaua'i, cruised around the west side of the island, took a big curving course to the south side of O'ahu, then headed north from Makapu'u for about 100 miles, and then west. At last report, it was north of a point midway between Kaua'i and Nihoa.

Another turtle passed south of Nihoa and was far west of Kaua'i at last check. A third headed north from Kaua'i, then cut directly south and appeared to make a stop at Nihoa before heading farther southwest. The fourth headed directly north from its release point, then south to the east side of Kaua'i, east along the southern shore of O'ahu and was last cruising the waters of west Moloka'i.

Reach Jan TenBruggencate at jant1@honoluluadvertiser.com.

1/8/07 10-11am "Pride of Hawaii"
 Monday FIRST OFFICER RYAN HOPKINS
 on behalf of CAPTAIN KJELL M. NESTER
 WITH Denise Hayashi & Chimaine P
 DEPART JAN 15TH Monday 8pm (Board ~630pm) DROPOFF?
 ARRIVE HILO JAN 16 Tuesday 7am. 7TH deck
 DEPART HILO 7PM TUESDAY - 9PM OFF VOLCANO 60 FT.
 ARRIVE KAHULUI 7AM WEDNESDAY

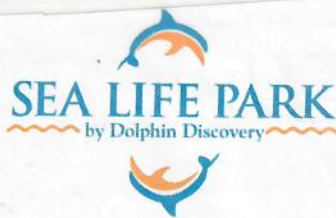
photos sent 1/29/07

Courtney McEachron / Cruise Staff
 c/o NCLA
 Pride of Hawaii
 700 Bishop St Suite #900
 Honolulu, HI 96813

sent 1/29/07

Please send photo of
 the two girls in the yellow flowered / blue
 shirt holding blow up turtle ☺

DAVID CORBETT - Chief Officer sent 1/29/07
 ERIC MATTHEWS - Cruise Director sent 1/29/07
 KAMANA'O PONO HATTORI - Hawaiian Ambassador sent 1/29/07
 CHIMAINÉ POUTEAD sent 1/29/07



[Handwritten signature]

MEDIA ADVISORY

FOR IMMEDIATE RELEASE
Wednesday, February 7, 2007

Contact: Dara Lum
539-3491 office
741-2735 cellular

WHAT: Sea Life Park by Dolphin Discovery will release 14 captive-bred Hawaiian green sea turtles into the ocean as a conservation means for scientific study and to help increase the wild population.

WHEN: THURSDAY, FEBRUARY 8, 11:00 A.M.

WHERE: MAKAPU'U BEACH (ACROSS FROM SEA LIFE PARK)
Sea Life Park by Dolphin Discovery
41-202 Kalaniana'ole Highway

BACKGROUND: This Thursday, Sea Life Park by Dolphin Discovery will release 14 turtles that were born in the Park in 2004 and 2005. Two of the turtles will be fitted with a tiny satellite tag to allow researchers to study their movement patterns and promote the preservation of the species.

Sea Life Park is collaborating with the Marine Turtle Research Program in NOAA's (National Oceanic and Atmospheric Administration) National Marine Fisheries Service, Pacific Islands Fisheries Service Center in the tagging and release of these turtles.

Sea Life Park's successful captive sea turtle breeding colony is the only program in the United States and is responsible for releasing up to 800 hatchlings into the wild each year. Hatchlings raised in the Park are loaned to other qualified aquariums to enhance public awareness about the Hawaiian Honu and act as ambassadors for their species. The Park's turtle colony consists of 12 adult females and 6 adult males and is part of a popular exhibit that allows guests to learn and feed these amazing reptiles.

World's largest ocean liner docking here

Star-Bulletin staff

The world's largest ocean liner, the Queen Mary 2, is scheduled to dock in Honolulu Harbor tomorrow morning.

The 151,000-ton, 1,132-foot-long vessel carries 2,592 passengers and 1,253 crew members, who are on the ship's first round-the-world cruise. The Queen Mary 2 left Fort Lauderdale, Fla., on Jan. 10 and is scheduled to sail for 81 days.

Passengers on the full round-the-world cruise paid between \$21,000 a person for a lower inside berth and \$185,000 a

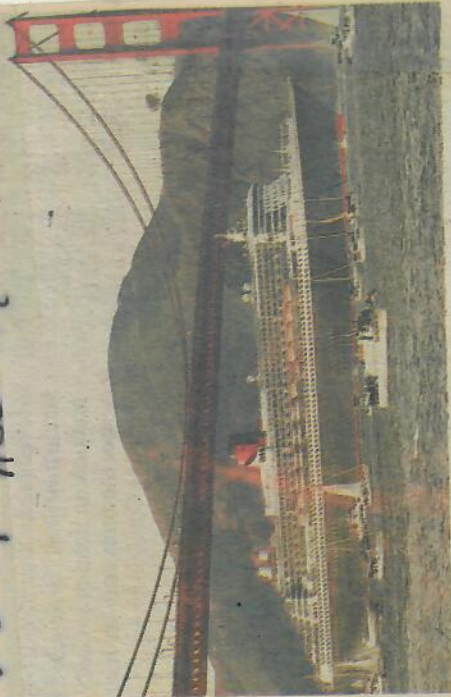
person for a top suite, said Cunard Lines spokesman Brian O'Conner.

The Honolulu leg of the cruise is sold out, he said.

The 236-foot-tall vessel left San Francisco on Monday after passing under the Golden Gate Bridge, clearing the bottom of the bridge by just 27 feet. It heads next to American Samoa.

The Queen Mary 2 is scheduled to arrive at 7 a.m. and depart at 6 p.m. tomorrow from Pier 2. This is the second visit to Honolulu for the ship, which docked here on March 1. Its sister ship, the Queen Elizabeth 2, docked in Honolulu last month

2-8-07 HSB A4



ASSOCIATED PRESS

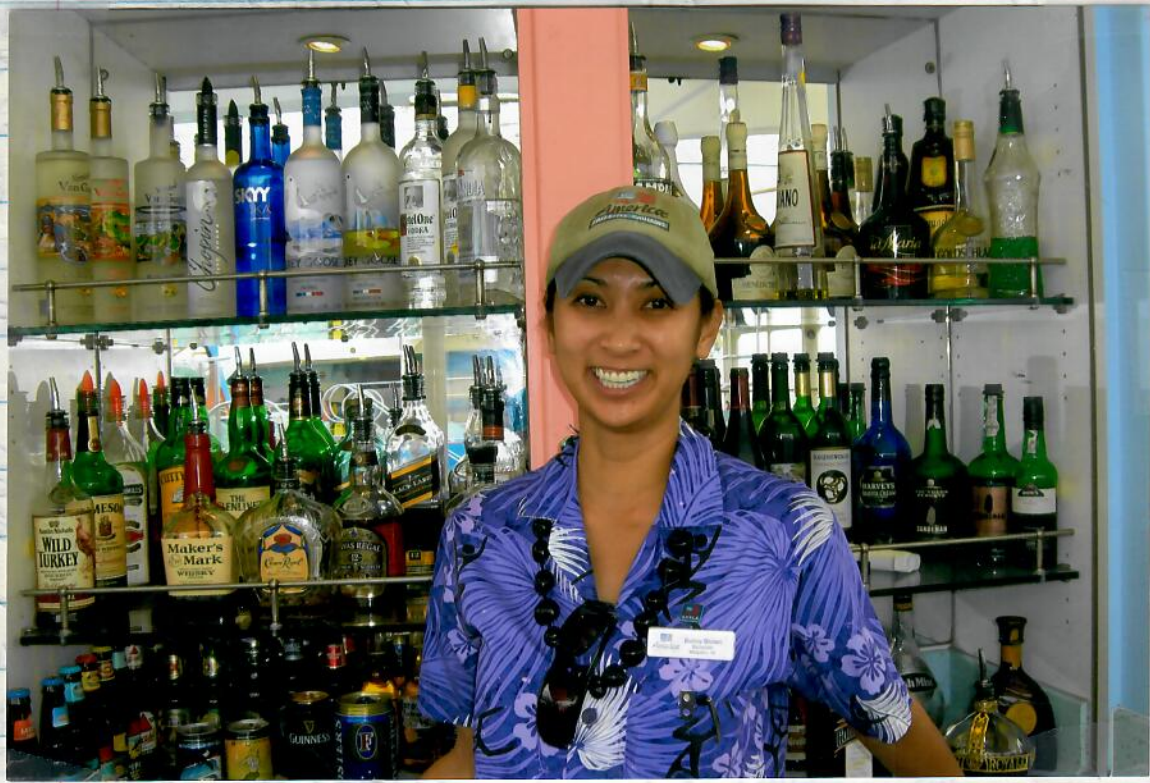
The Queen Mary 2 passed under the Golden Gate Bridge near San Francisco on Sunday. The ship will stop in Honolulu tomorrow on its 81-day Maiden World Cruise.

and is also on a round-the-world cruise.

The two ocean liners are scheduled to be in Sydney

Harbor on Feb. 20.

The \$800 million Queen Mary 2 entered service in January 2004.



#	Hatch Date	Tag #	Pit Tag #		Previous		Current	
			Left	Right	Weight (g)	SCL (CM)	Weight (g)	SCL (CM)
130	8/26/2005	YQ 22	4529732313	45290A7A28	4580	31.2	5260	32.6
					4580	31.2	5260	32.6
					4580	31.1	5260	32.6
					4580	31.2	5260	32.6
					average			
134	8/26/2005	YQ 26	4707034611	470D00092D	3500	28.5	4140	29.3
					3500	28.7	4140	29.3
					3500	28.7	4140	29.3
					3500	28.6	4140	29.3
					average			

2/8/07 Thursday ^{2 SPOT 55} ^{ACTIVATION} procedure done at home ~ 9AM 2/8/07

Swipe Magnet once =
 2 quick blinks, then
 3 sec pause then
 2 more quick blinks, then
 LED on solid for 2 seconds
 Pass Magnet again during long 2 sec.
 Delayed = 10 quick blinks.

SEA LIFE PARK ^{captive:}

2/8/07 Thursday
 KNOWN AS ZG 53 (but NO external TAGS)

2/8/07 weighed and measured =
 49 LB BY SLP STAFF
 52.4 SCL cm

new
 give used

UH 470A297174

RH 470D1A040E

Released

11:30 AM
 CORE ACROSS THE STREET FROM SLP w/ 14 others

2004 Year Class

SEA LIFE PARK
Captive
Born
Summer
2005

PITS

(87)

EXISTING

YQ 22

LH 4529732313

RH 45290A7A28

CCL 36.0

CCW 31.5

SCL 33.1 (32.9) SCW 27.5

photos

SPOT5-T^{eml} activated ARGOS ID 71908

Wildlife Computers #068 0511

Weight ~~11.715 lbs~~ NAME ~~John~~ "John"
New Moto tool 3rd lateral Right = "22"

Both turtles released

~ 11:30 AM 2/8/07 "BABY Makapuu across the street from Sea Life Park

Weight = 9.2 lbs

NAME - JIA

PITS

9.2 lbs

EXISTING

YQ 26

LH 470703461

RH 470D00092D

CCL 33.0

CCW 29.0

SCL 30.3 (30.0) SCW 24.9 cm

SPOT5-T^{eml} activated ARGOS ID 71910

Wildlife Computers #068-0590

New Moto tool 3rd lateral Right = "26"

photos

SPOT5
2/7/07 Attachments
Wednesday
at KRF Start ~ 2:30 pm
finished 5:30 pm

Came back to shore several times after release
PI C63
lost 3 digits of turtle
2/8/07

"From Here to Eternity Beach"

By Blowhole Beach "Sleeping"

RH 467 D39164C = WE16

LH 478 A571411

SCL 39.0

Notch 38.6

19.0 lbs.

SCW 31.0

CCL 42.0

CCW 35.5

head 6.2

RFF 6.6

2-9-07
2-9-07
Cody Hoover

picked up by

SLP "Release"

2/8/07

Returned to KRF 2/9/07

Released AGAIN

2/13/07 KAWAIKI
BP MT "11" 3rd lot
Land R

2-10-07 Gave by Mats; Pie on beach "Lethargic"

Brought by public to SLP

GB took to KRF TANK B

CL3 LH ←

YQ36

EdJ

89

ife

2005 Hatchling Master List

PC

Sea Life Park Hawaii
Animal Programs
WMT 2005 Captive Hatchling Report

Report by: SLP
Name: Jen Kawaratani
1/8/2007
Copy to: Jeff Pawloski
George Balazs

133	8/26/2005	YQ 25	45234F6214	4525740E46	5240	32.3	5120	32.4
					5240	32.3	5120	32.4
					5240	32.3	5120	32.4
					5240	32.3	5120	32.4
					average	5240	32.3	5120

135	8/26/2005	YQ 27	470D19422A	470A044650	3840	28.8	3940	28.6
					3840	28.8	3940	28.6
					3840	28.9	3940	28.6
					average	3840	28.8	3940
136	8/26/2005	YQ 28	45253E5078	45243A1A1B	4840	31.9	4980	32.6
					4840	31.7	4980	32.6
					4840	31.9	4980	32.6
					average	4840	31.8	4980
138	9/10/2005	YQ 30	470A0D204B	470A152915	3960	29.7	4160	30.6
					3960	29.6	4160	30.6
					3960	29.6	4160	30.6
					average	3960	29.6	4160
142	9/10/2005	YQ 34	470C2D0A06	470A75053C	4080	29.9	4560	30.6
					4080	29.8	4560	30.6
					4080	29.9	4560	30.6
					average	4080	29.9	4560
143	9/14/2005	YQ 36	45237D4C63	452649012A	4140	29.9	4620	31.1
					4140	29.9	4620	31.1
					4140	29.9	4620	31.1
					average	4140	29.9	4620

Sea Life Park Hawaii
 Animal Programs
 WMT 2005 Captive Hatchling Report

2005
 Master
 List

Report by: SLP
 Name: Jen Kawratani
 1/20/2007
 Copy to: Jeff Pawloski
 George Balazs

#	Hatch Date	Tag #	Pit Tag #		Previous		Current	
			Left	Right	Weight (g)	SCL (CM)	Weight (g)	SCL (CM)
8	7/25/2005	WE 08	45285A5F7B	4523325E60	6180	34.0	6340	34.3
					6180	34.0	6340	34.3
					6180	34.0	6340	34.3
					average	6180	34.0	6340
10	7/25/2005	WE 10	452952391C	45237E4D33	6060	34.7	6320	35.4
					6060	34.7	6320	35.4
					6060	34.7	6320	35.4
					average	6060	34.7	6320
11	7/25/2005	WE 11	4529570711	45256C314B	5980	34.6	6240	35.2
					5980	34.6	6240	35.2
					5980	34.6	6240	35.2
					average	5980	34.6	6240
12	7/25/2005	WE 12	NA	NA	1672	22.2	1720	22.5
					1672	22.2	1720	22.5
					1672	22.2	1720	22.5
					average	1672	22.2	1720
13	7/25/2005	WE 13	470B4D580C	470C35661B	5960	33.4	6340	33.9
					5960	33.4	6340	33.9
					5960	33.4	6340	33.9
					average	5960	33.4	6340
15	7/25/2005	WE 15	452828617F	45270C7307	6880	35.6	7140	36.1
					6880	35.6	7140	36.1
					6880	35.6	7140	36.1
					average	6880	35.6	7140
16	7/25/2005	WE 16	470A571411	467D39164C	8340	37.7	8480	38.1
					8340	37.7	8480	38.1
					8340	37.7	8480	38.1
					average	8340	37.7	8480
17	7/25/2005	WE 17	4526492533	470B2E2746	4280	29.9	4320	30.3
					4280	29.9	4320	30.3
					4280	29.9	4320	30.3
					average	4280	29.9	4320
20	7/25/2005	WE 20	470C26683C	470A1E1D56	6980	36.6	7340	36.9
					6980	36.6	7340	36.9
					6980	36.6	7340	36.9
					average	6980	36.6	7340

* WE 1-7, 18, 19, YQ 21, 29 at the Mauna Lani

* WE 14, WE 21, YQ 23, YQ 24, YQ 31

* WE 9 and 23 are at Kahala Resort

and YQ 32 at Maui Ocean Center.

Sea Life Park Hawaii
 Animal Programs
 WMT 2005 Captive Hatchling Report

SAT TAGS Release Makapu'u
 5 Pot 55
 see p.

Report by: SLP
 Name: Jen Kawaratani
 1/20/2007
 Copy to: Jeff Pawloski
 George Balazs

91
 165

#	Hatch Date	Tag #	Pit Tag #		Previous		Current	
			Left	Right	Weight (g)	SCL (CM)	Weight (g)	SCL (CM)
130	8/26/2005	YQ 22	4529732313	45290A7A28	5260	32.6	5380	32.9
					5260	32.6	5380	32.9
					5260	32.6	5380	32.9
					5260	32.6	5380	32.9
					average	5260	32.6	5380
133	8/26/2005	YQ 25	45234F6214	4525740E46	5120	32.4	5260	33.0
					5120	32.4	5260	33.0
					5120	32.4	5260	33.0
					5120	32.4	5260	33.0
					average	5120	32.4	5260
134	8/26/2005	YQ 26	4707034611	470D00092D	4140	29.3	4200	29.7
					4140	29.3	4200	29.7
					4140	29.3	4200	29.7
					4140	29.3	4200	29.7
					average	4140	29.3	4200
135	8/26/2005	YQ 27	470D19422A	470A044650	3940	28.6	4040	28.9
					3940	28.6	4040	28.9
					3940	28.6	4040	28.9
					3940	28.6	4040	28.9
					average	3940	28.6	4040
136	8/26/2005	YQ 28	45253E5078	45243A1A1B	4980	32.6	5160	32.9
					4980	32.6	5160	32.9
					4980	32.6	5160	32.9
					4980	32.6	5160	32.9
					average	4980	32.6	5160
138	9/10/2005	YQ 30	470A0D204B	470A152915	4160	30.6	4240	30.7
					4160	30.6	4240	30.7
					4160	30.6	4240	30.7
					4160	30.6	4240	30.7
					average	4160	30.6	4240
142	9/10/2005	YQ 34	470C2D0A06	470A75053C	4560	30.6	4860	31.3
					4560	30.6	4860	31.3
					4560	30.6	4860	31.3
					4560	30.6	4860	31.3
					average	4560	30.6	4860
143	9/14/2005	YQ 36	45237D4C63	452649012A	4620	31.1	4880	31.5
					4620	31.1	4880	31.5
					4620	31.1	4880	31.5
					4620	31.1	4880	31.5
					average	4620	31.1	4880

JOHNSON

115 165 =

X-RAY 1-14-07 MAC

JIA

165 =

**Sea Life Park Hawaii
Animal Programs
WMT 2005 Captive Hatchling Report**

Report by: SLP
Name : Jen Kawratani
1/8/2007
Copy to : Jeff Pawloski
George Balazs

#	Hatch Date	Tag #	Pit Tag #		Previous		Current	
			Left	Right	Weight (g)	SCL (CM)	Weight (g)	SCL (CM)
8	7/25/2005	WE 08	45285A5F7B	4523325E60	5580	32.2	6180	34.0
					5560	32.3	6180	34.0
					5560	32.1	6180	34.0
					average	5567	32.2	6180
10	7/25/2005	WE 10	452952391C	45237E4D33	5360	33.1	6060	34.7
					5340	33.2	6060	34.7
					5340	33.2	6060	34.7
					average	5347	33.2	6060
11	7/25/2005	WE 11	4529570711	45256C314B	5300	34.3	5980	34.6
					5300	34.1	5980	34.6
					5300	34.3	5980	34.6
					average	5300	34.2	5980
12	7/25/2005	WE 12	NA	NA	1467	21.1	1672	22.2
					1467	21.1	1672	22.2
					1467	21.1	1672	22.2
					average	1467	21.1	1672
13	7/25/2005	WE 13	470B4D580C	470C35661B	5140	32.3	5960	33.4
					5140	32.3	5960	33.4
					5140	32.3	5960	33.4
					average	5140	32.3	5960
15	7/25/2005	WE 15	452828617F	45270C7307	5980	34.2	6880	35.6
					5980	34.2	6880	35.6
					5980	34.1	6880	35.6
					average	5980	34.2	6880
16	7/25/2005	WE 16	470A571411	467D39164C	7760	36.9	8340	37.7
					7780	36.8	8340	37.7
					7780	36.8	8340	37.7
					average	7773	36.8	8340
17	7/25/2005	WE 17	4526492533	470B2E2746	3960	29.4	4280	29.9
					3960	29.3	4280	29.9
					3960	29.4	4280	29.9
					average	3960	29.4	4280
20	7/25/2005	WE 20	470C26683C	470A1E1D56	6560	35.5	6980	36.6
					6560	35.5	6980	36.6
					6560	35.5	6980	36.6
					average	6560	35.5	6980

* WE 1-7, 18, 19, YQ 21, 29 at the Mauna Lani

* WE 14, WE 21, YQ 23, Y

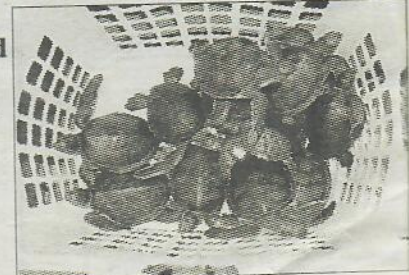
* WE 9 and 23 are at Kahala Resort

FEB 2007



Cruise Ship Launches Baby Keiki Sea Turtles

Forty-five green sea turtles, five-months old, were launched Jan. 16 off the coast of Volcanoes National Park from the Pride of Hawai'i passenger ship. The turtle crew included: George Balazs (r), Leader Marine Turtle Research Program for the National Marine Fisheries Service; Mark Rice, Director of Sea Turtle Research Program at Hawai'i Preparatory Academy; and Capt. Kjell Nesheim. The turtles were captive, bred at Sea Life Park on O'ahu and tagged by the National Oceanic Atmospheric Agency with tiny Passive Integrated Transponders for long-term individual identification. Scientists are hopeful that the tags will identify these turtles in 20 years or more when they nest ashore. While on board the Noweigan Cruise Liner, the young turtles were "exercised" and fed in a special portable sea water pool taken aboard the ship for this purpose. Results of turtle research projects can be viewed at www.hpa.edu/turtle.html. Photos courtesy of NCL America



Hawaii bids aloha to its 'Pride'

By Allison Schaefer
aschaefer@starbulletin.com

HSB
4/11/07 AI

Norwegian Cruise Line, which last February blamed its Hawaii operations for widening corporate losses, has chosen to stem the financial bleeding by sending Pride of Hawaii to Europe.

Robert Kritzman, executive vice president and managing director for NCL America, said the change is meant to bolster pricing in the Hawaii market, which saw dramatic downturns after Pride of Hawaii — its largest and newest U.S.-flagged ship — joined the fleet last summer.

The move will take effect next February. The company called it temporary, but also said the ship would be refitted and repainted for European service, covering up the distinctive flower lei along its bow.

Pride of Hawaii, which holds about 2,400 passengers and employs 965 workers, will not return to Hawaii until NCL America achieves profitability, said Colin Veitch, the company's president and chief executive officer.

"We take this action with regret, but sure in the knowledge that a temporary retrenchment is the right thing to do for the good of the business and the good of Hawaii in the long run," Veitch said.

Kritzman said increased competition from foreign-flagged ships entering the Hawaii market has contributed to the company's struggle in Hawaii.

"Obviously, reducing the supply by one ship will have a very positive effect on the pricing," Kritzman said, adding that the company still expects to bring 250,000 visitors to Hawaii in 2008 despite the one-third reduction to its fleet.

NCL employees who will be displaced by the changes will be offered new jobs within the company, Kritzman said.

>> **Hawaii visitor industry workers reel from NCL's announcement. A6**

Ship's absence to hurt many state businesses

By Allison Schaefer
aschaefer@starbulletin.com

Members of Hawaii's visitor industry, from farmers and laundry suppliers to tour operators and hotel chains, are reeling from an announcement yesterday that Norwegian Cruise Line's U.S. unit plans to cut its Hawaii fleet by one-third next year.

"NCL America is not just your typical visitor industry business. It impacts all facets of our economy, whether it be the cleaning services that it utilizes, the agricultural products that they buy from our local distributors or the blocks of seats that they buy each week from our activities and attractions," said State Tourism Liaison Marsha Wiener.

The company has been credited with keeping many of the island visitor industry's small businesses afloat and creating expansion opportunities for others, Wiener said.

"They offer guaranteed business," she said.

From the start, NCL's expansion into Hawaii has faced choppy seas, prompting many in the maritime industry to bring up the ghosts of other ill-

fated U.S.-flagged operations like American Classic Voyages Inc., which ended up in bankruptcy.

For NCL there came bad weather, then costly production delays, and then a barrage of consumer complaints documented on cruising blogs and Web sites.

NCL worked to improve its image so successfully that Pride of Hawaii's arrival last summer seemed to have bypassed the difficulties surrounding the debuts of the company's other two Hawaii-ported ships.

But while the arrival of Pride of Hawaii did not generate the negative publicity of the other ships, the arrival had an almost immediate negative impact on the company's bottom line. And competitors had then begun modifying their own itineraries to include stops in Hawaii.

NCL lowered its prices after Pride of Hawaii arrived in 2006, said Danny Ching, owner of Non Stop Travel, NCL's largest cruise agent in Hawaii, in an interview earlier this year.

"Basically, demand hasn't quite caught up to the inventory, but I don't expect this condition to last," Ching said. "NCL



STAR-BULLETIN / JUNE 2006

NCL's Pride of Hawaii, which arrived in Honolulu in June, will leave in February. The ship's lei design will be painted over.

pressed disappointment in NCL's decision to cut back Hawaii operations and that he looks forward "to the day that we will be able to welcome the Pride of Hawaii back to Hawaii's shores, hopefully in the not-too-distant future."

NCL's entrance into Hawaii's market has been good for the state, which has seen cruise capacity quadruple since the company's 2004 entry, Inouye said.

"I am proud of the great strides made, through the robust growth of a cruise ship sector, to further diversify Hawaii's tourism industry, making our island state the fastest growing domestic cruise destination in America," he said.

All aboard, or not

Guests booked on the Pride of Hawaii for February and beyond will be offered a \$50 credit if they rebook by May 1 on another Hawaii ship. Guests choosing to cancel will receive full refunds, said Robert Kritzman, executive vice president and managing director for Norwegian Cruise Line.

America's prices will rise as word continues to get out about the value of their product."

U.S. Sen. Dan Inouye, who championed the company's entry into the islands, ex-

32



H.9 5005 640

(97)



JAN 2007

JAN 2007 P.O.H.



FOOS WAG

1874 Annual ...

101



THANK YOU TO ALL OUR SPONSORS



JAN 2007 PCH

14th FEB 2003

15th 2004

16th 2005

17th 2006

18th 2007

POINTS TO MAKE

- Hawaiian Nurtured by people
- 18th YEAR "HONORARY FOR HONO" ^{TURTLE AMBASSADOR PROGRAM}
- WORLD'S GREATEST ^{STARTED BY K.A. & STEVE KOSER} EDUCATIONAL ^{CONSERVATION} PROGRAM FOR SEA TURTLES

Turtle can now be seen here every day

THANK SLP ^{CAPTURE} & ML RESOCT
 WITH THANK PEOPLE OF HAWAII - PROTECTING
 ESPECIALLY HAWAIIAN PEOPLE RESTORING
 ANIMAL BELONGS TO IN STEWARDSHIP
 THANK TURTLE CARETAKERS -

[RANELA AKAKA] PII LAETHA [Kendall King]

- THANK VETERINARY DOCTORS
 THIERRY WORK & ROBERT MORRIS
 ENSURING HEALTH OF TURTLES FOR
 RELEASE INTO THE WILD

✓ Hawaii Preparatory Academy students 25 (2010)
 MARC RICE 20 years

✓ Lost but not least thank
 the Agency I've worked for
 28 years NATIONAL O.A.A.
 NMS PI FSC

2010

FOOS WIZ

HA

7/4/07 Depart FL 108 5:52am
Wednesday w/ the jury work + Alison and
3 of his guests.

Shawn & Paul Murakawa went to
Maura Lane 7/3 Tuesday 2.00, and w/ MASC
conducted final measurements etc. for the
guest families.

GB Alvin + Paul 6/27pm to Chicago Day & Kyle's
wedding 6/30/07 Good Shepherd Lutheran Church
Elyria, IL. Returned 7 PM 7/3 Tuesday.

National car rental #22 + taxes - to ML
Breakfast with Paul and Shawn Buffet. Room 129
Hospitality Room. 20' x 30' Shade tent.
~ 8:30 AM walked 7 turtles over from Alvin
to Display booth. Parade ^{started with turtles @ 9:30 AM} 10:30 AM Speech
by Senator AKAKA. Then release -

Jesus bravo and me - 6th turtle.
7th turtle - HPA kids.
Photos by SKKM on ^{MTEP} work camera
see page 162 → 163 → 161 - 166 -
- 158 - 159 - 157 (N=31) people without
155 - cameras

Turtles released into the wild

Seven green sea turtles are freed during Turtle Independence Day

By Karin Stanton
Associated Press

KOHALA COAST, Hawaii >> Seven juvenile green sea turtles got their first taste of freedom yesterday.

The turtles, which are protected under the Endangered Species Act, were launched into the ocean from the beach at Mauna Lani Resort along the Kohala Coast.

It was the 18th year for the

Turtle Independence Day Celebration, a partnership between the resort and Sea Life Park.

Hundreds of resort guests and community residents packed the shoreline to watch as the turtles, or honu in Hawaiian, flipped their way into the waters to begin new lives of freedom.

The 2-year-old animals — named Kulewa, Meheu, Muolani, Naauao, Palaole, Pookela and Pokii — were carried in slings by young volunteers down to the water's edge, where guests scooped them up and released them into the shallows.

The babies were born at Sea Life Park on Oahu and raised at the Mauna Lani Resort's salt-water ponds. They were set free after a final health checkup and once an identification microchip was implanted in them.

Since 1989 the Turtle Independence Day program has released more than 100 juveniles into the wild.

A generation ago, green sea turtles were hunted for sport and for food. That changed in 1978, when honu were added to the federal endangered species list and it became a crime to kill or harass them.

"In the last 25 years, the numbers have rebounded," said George Balazs, a marine turtle researcher with the National Marine Fisheries Service's Pacific Islands Fisheries Science Center.

"This is a great example of the Endangered Species Act really working," Balazs said, helping launch one of the turtles.

The Mauna Lani Resort educates hundreds of school children each year through cultural and marine programs.

Sea Life Park by Dolphin Discovery offers a variety of shows, exhibits and educational programs.

HAWAII A9



ASSOCIATED PRESS

Masayo Nagahara, second from right, steadied a green sea turtle yesterday on the Big Island as it was carried to the ocean.

DATA BY SKM

SEA TURTLE TAGGING FORM

TID 18

DATE FORM FILLED OUT 7/3/07 RELEASED 07-04-07 18th
CAPTURE DATE, LOCATION AND METHOD: MAUNA LANI, TURTLE INDEPENDENCE DAY

07-03-07 MAUNA LANI CAPTIVE
PERSON RECORDING DATA: NICK CHOCK
7/25/05 (DOB)
2 YR OLD 3LP

TUMOR SCORE

0

ORAL TMRS EXT:
YES OR NO

-

EMACIATION CODE

0

OLD TAGS:

44141F3F1B
(06)4414266762

NEW TAGS:

RFL

LFL

MT

STRAIGHT CARAPACE - LENGTH:

40.0 cm

WIDTH:

31.5 cm

NOTCH LENGTH:

39.8 cm

DB:

0 L.O.

VB:

0 L.O.

CURVED CARAPACE LENGTH:

43.0 cm

WIDTH:

36.0 cm

HEAD WIDTH:

6.5 cm

LATERAL: 16.9 cm

POST LATERAL: 11.3 cm

PPS: YES OR NO OR NE

NO

MIDLATERAL

SEX: Male, Female or Undetermined

U

TAIL LENGTH: T

9.0 cm

4.2 cm

5.5 cm

RIGHT FRONT FLIPPER WIDTH:

6.9 cm

SAMPLES COLLECTED:

PLASTRON LENGTH:

31.9 cm

WEIGHT:

20.0 #

DESCRIPTIVE REMARKS:

MT 06 on 3rd L lateral
mouth check: OK

Between R35-R45 ~~Notched~~

RF

6/27/07

1.0 cc LIQ

by Piri LAEHA



DATA BY SHAM SEA TURTLE TAGGING FORM T1218
DATE FORM FILLED OUT 7/3/07 RELEASED 07-04-07 18th
CAPTURE DATE, LOCATION AND METHOD: MAUNA LANI, TURTLE INDEPENDENCE DAY

07-03-07 MAUNA LANI CAPTIVE
PERSON RECORDING DATA: Stacie Doi (7125105 (DOB) 2 YR OLD SLP)

Mouth
08

TUMOR SCORE

0

ORAL TMRS EXT:
YES OR NO

-

EMACIATION CODE

0

OLD TAGS:

(08) 452428001C
4529010543

NEW TAGS:

RFL
LFL

STRAIGHT CARAPACE - LENGTH:

40.5 cm

WIDTH:

32.4 cm

NOTCH LENGTH:

40.2 cm

DB:

0

L.O.

VB:

0

L.O.

CURVED CARAPACE LENGTH:

43.5 cm

WIDTH:

43.7 cm

HEAD WIDTH:

6.6 cm

LATERAL

16.3 cm

POST LATERAL

11.3 cm

PPS: YES OR NO OR NE

YES

MIDLATERAL

SEX: Male, Female or Undetermined

U

TAIL LENGTH: T

8.5 cm

13.8

C 5.5 cm

RIGHT FRONT FLIPPER WIDTH:

6.7 cm

SAMPLES COLLECTED:

PLASTRON LENGTH:

31.1 cm

WEIGHT:

19.5 #

DESCRIPTIVE REMARKS:

6/27/07 1.0 cc LHA by pii

Mouth check: 1 plaque roof of mouth
(-MID) on 3rd L Lateral

DATA By SKM SEA TURTLE TAGGING FORM TID 1P

DATE FORM FILLED OUT 7/3/07 RELEASED 07-04-07
CAPTURE DATE, LOCATION AND METHOD: MAUNA LANI, TURTLE INDEPENDENCE DAY

07-03-07 MAUNA LANI CAPTIVE
PERSON RECORDING DATA: NICK CHOCK (DOB) 8/14/06 05
2 YR OLD

TUMOR SCORE

0

ORAL TMRS EXT:
YES OR NO

-

EMACIATION CODE

flat

OLD TAGS:

452830517B

45254E0E0D

NEW TAGS:

RFL

LFL

noted
89

STRAIGHT CARAPACE - LENGTH:

40.8 cm

WIDTH:

34.3 cm

NOTCH LENGTH:

40.6 cm

DB:

0 L.O.

VB:

0 L.O.

CURVED CARAPACE LENGTH:

44 cm

WIDTH:

39 cm

HEAD WIDTH:

6.4 cm

LATERAL

16.0 cm

POST LATERAL
12.0 cm

PFS: YES OR NO OR NE

Yes

MIDLATERAL

SEX: Male, Female
or Undetermined

U

TAIL LENGTH: T

9 cm

14.2 cm

5.5 cm

RIGHT FRONT FLIPPER WIDTH:

6.8 cm

SAMPLES COLLECTED:

PLASTRON LENGTH:

32.8 cm

WEIGHT:

21.2 #

1.0 cc LIQ
by Pii

DESCRIPTIVE REMARKS:

MT 89 on 3rd L lateral 6/27/07
The plaque tip of tongue
mouth check: OK

~~11~~

REV 1

DATA By SKM

SEA TURTLE TAGGING FORM

TID 18

DATE FORM FILLED OUT 7/3/07

RELEASED 07-04-07

CAPTURE DATE, LOCATION AND METHOD:

MAUNA LANI, TURTLE INDEPENDENCE DAY

07-03-07 MAUNA LANI CAPTIVE 7/7/04 (DOB)
PERSON RECORDING DATA: Stacie Doi 3 YR OLD

TUMOR SCORE

0

ORAL TMRS EXT:
YES OR NO

-

EMACIATION CODE

0

OLD TAGS:

(5) 470 A 10290 D
452 61 + 09.12

NEW TAGS:

RFL
LFL

STRAIGHT CARAPACE - LENGTH:

41.0 cm

WIDTH: 33.7 cm

NOTCH LENGTH: 40.6 cm

DB: 0 L.O.

VB: 0 L.O.

CURVED CARAPACE LENGTH:

43.5 cm

WIDTH: 38.0 cm

HEAD WIDTH: 6.7 cm

LATERAL 17.1 cm

POST LATERAL 12.1 cm

FPS: YES OR NO OR NE Yes

MIDLATERAL

SEX: Male, Female or Undetermined

U

TAIL LENGTH: T 9.5 cm

14.7

6 cm

RIGHT FRONT FLIPPER WIDTH:

7.4 cm

SAMPLES COLLECTED: 14

PLASTRON LENGTH: 33.0 cm

WEIGHT: 22.2 #

1.0 cc LIQ
By Pit 6/27/07
See page 14 FOR BUOYANCE HISTORY

DESCRIPTIVE REMARKS:

Mouth: 1 plaque on tongue
MT 5 3rd L Lateral

SEA TURTLE TAGGING FORM

DATA By SKM

DATE FORM FILLED OUT 7/3/07

RELEASED 07-04-07

TID18

CAPTURE DATE, LOCATION AND METHOD:

MAUNA LANI, TURTLE INDEPENDENCE DAY

07-03-07 MAUNA LANI CAPTIVE

PERSON RECORDING DATA: Nick Chock

DOB: 7/7/04

3 YR OLD

TUMOR SCORE

0

ORAL TMRS EXT:

YES OR NO

-

EMACIATION CODE

0

OLD TAGS:

(4) 4529530841
470B2D232F

NEW TAGS:

RFL

LFL

STRAIGHT CARAPACE LENGTH:

47.2 cm

WIDTH: 37.9 cm

NOTCH LENGTH: 47.0 cm

DB: 0 L.O.

VB: 0 L.O.

CURVED CARAPACE LENGTH:

50.4 cm

WIDTH: 42.5 cm

HEAD WIDTH: 7.6 cm

LATERAL: 20.0 cm

POST LATERAL: 14.0 cm

PPS: YES OR NO OR NE Yes

MIDLATERAL

SEX: Male, Female or Undetermined

U

TAIL LENGTH: T 12 cm

17.0 cm C 7.5 cm

RIGHT FRONT FLIPPER WIDTH:

8.4 cm

SAMPLES COLLECTED:

PLASTRON LENGTH: 37.6 cm

WEIGHT: 33.6 #

6/27/07

DESCRIPTIVE REMARKS:

1.0 cc LIQ
by Piri

Mouth Check: OK

MT4 on 3RD L lateral

The turtle you and Jesus released was # 4, Po'okela.

REVISED

DALAZS
Marine Turtle Research
NOAA NMFS PIFSC
2570 Dole Street
Honolulu, Hawaii 96822



SEA TURTLE TAGGING FORM

TID 18

DATA By SKM
DATE FORM FILLED OUT 7/3/07

RELEASED 07-04-07

CAPTURE DATE, LOCATION AND METHOD:

MAUNA LANI, TURTLE INDEPENDENCE DA

07-03-07	MAUNA LANI CAPTIVE	7/5/07 04
PERSON RECORDING DATA: Stacie Doi		3 YR OLD

TUMOR SCORE

0

ORAL TMRS EXT:
YES OR NO

-

EMACIATION CODE

0

OLD TAGS:

(2) 45276 22564
470D134334

NEW TAGS:

RFL
LFL

MT2

STRAIGHT CARAPACE - LENGTH:

44.4 cm

WIDTH:

36.3 cm

NOTCH LENGTH:

44.0 cm

DB:

0 L.O.

VB:

0 L.O.

CURVED CARAPACE LENGTH:

47.0 cm

WIDTH:

41.0 cm

HEAD WIDTH:

~~7.0~~ 7.0 cm

LATERAL

18.1 cm

POST LATERAL

13.2 cm

FPS: YES OR NO OR NE

Yes

MIDLATERAL

SEX: Male, Female or Undetermined

U

TAIL LENGTH: T

11.5 cm

15.8 cm

8 cm

SAMPLES COLLECTED:

RIGHT FRONT FLIPPER WIDTH:

7.4 cm

PLASTRON LENGTH:

35.3 cm

WEIGHT:

26.2 #

DESCRIPTIVE REMARKS:

Liq 1.0 cc 6/27/07 By Pii

Mouth Check: ~~no~~ no plaque L. side tongue
MT 2 3rd L Lateral

11
~~11~~

DATA BY SKM

SEA TURTLE TAGGING FORM

TID 18

DATE FORM FILLED OUT 7/3/07

RELEASED 07-04-07

CAPTURE DATE, LOCATION AND METHOD:

MAUNA LANI, TURTLE INDEPENDENCE DAY

07-03-07 MAUNA LANI CAPTIVE DOB: 7/25/05
PERSON RECORDING DATA: NICK CHOCK 2 YR OLD

TUMOR SCORE

0

ORAL TMRS EXT:
YES OR NO

-

EMACIATION CODE

0

OLD TAGS:

(02) 44143E1569
~~44143E1569~~
4413150CDE ← LF

NEW TAGS:

RFL
LFL

STRAIGHT CARAPACE - LENGTH:

42.0 cm

WIDTH:

34.4 cm

NOTCH LENGTH:

41.5 cm

DB:

0 L.O.

VB:

0 L.O.

CURVED CARAPACE LENGTH:

45.0 cm

WIDTH:

40.0 cm

HEAD WIDTH:

6.8 cm

LATERAL:

19.3 cm

POST LATERAL:

13.5 cm

FPS: YES OR NO OR NE

Yes

MIDLATERAL

SEX: Male, Female or Undetermined

4

TAIL LENGTH: T

9.5 cm

16.4

5.5 cm

SAMPLES COLLECTED:

RIGHT FRONT FLIPPER WIDTH:

7.2 cm

PLASTRON LENGTH:

44.0 cm

WEIGHT:

24.9 #

DESCRIPTIVE REMARKS:

1.0 cc LIQ p.
6/27/07 by III

Mouth check; 1 plaque on tongue

MT02 on 3rd L lateral

----- Forwarded message -----
Date: Wed, 27 Jun 2007 16:10:12 -1000
From: Pi'i Lae'ha <Plaeha@maunalani.com>
Subject: Honu Monthly Exam

Please note that honu #2, 4, 5, 02, 06, 08, 09 received 1.0cc of tetracycline (0.5cc in right shoulder muscle and 0.5cc in left shoulder muscle) for bone marking. Tentative turtles to be released on TID, July 4, 2007.

LID
N=7
July 4, 2007
TID

Date: Thu, 5 Jul 2007 22:14:12 -1000
From: Marc Rice <mrice@hpa.edu>
To: Geoge Balazs <gbalazs@honlab.nmfs.>
Subject: 5 display turtles on July 4

áá last four digits of LH PIT tag
M11641
M22136

F17212

F34A18

F4223C

Date: Thu, 12 Jul 2007 20:07:49 +0000
From: MAILER-DAEMON@honlab.nmfs.hawaii.edu
To: gbalazs@honlab.nmfs.hawaii.edu
Subject: Re: How did it go today at the ML with the turtles?

Hi Mr. Balazs,
The 4 turtles that were still buoyant were, M1, F1, F3, and M3. Other looked better and yesterday I only saw pellets in the pond floating around, the auto feeders were empty.

Meimei.

P.S. My other e-mail is sunscreegirl1808@yahoo.com

113

8

BALAZS
Marine Turtle Research
NOAA NMFS PIFSC
2570 Dole Street
Honolulu, Hawaii 96822

NOT
Released
TID 18

REVISED 1

DATA by SKKM SEA TURTLE TAGGING FORM

DATE FORM FILLED OUT 07/03/07

2 year old

CAPTURE DATE, LOCATION AND METHOD:

070307	MAUNA LANI CAPTIVE
PERSON RECORDING DATA: SM	

TUMOR SCORE

OLD TAGS:

MT (04)

ORAL TMRS EXT:
YES OR NO

LIF 4422044375

REPT NT

45291C5F15

RFE



LFL

EMACIATION CODE

STRAIGHT CARAPACE - LENGTH:

WIDTH:

NOTCH LENGTH:

DB:

VB:

CURVED CARAPACE LENGTH:

WIDTH:

HEAD WIDTH:

LATERAL

POST LATERAL

EPS: YES OR NO OR NE

MIDLATERAL

SEX: Male, Female or Undetermined

TAIL LENGTH: T

RIGHT FRONT FLIPPER WIDTH:

SAMPLES COLLECTED:

PLASTRON LENGTH:

WEIGHT:

DESCRIPTIVE REMARKS:

114
See p. 108

Abnormal Buoyancy History of Honu #5

(LH - 470A10290D / RH - 45261A0912)

DATE	OBSERVATIONS
2007	
January 26	abnormal hind buoyant
27	hind buoyant and listing left - transfer from Honu Pond to Q-1
28	normal buoyancy
February 7	transfer from Q-1 tank to Honu Pond
9	(am) abnormal hind buoyant (pm) normal buoyancy
10	abnormal hind buoyant - transfer from Honu Pond to Q-2 tank
11	abnormal hind buoyant
12	normal buoyancy
13	normal buoyancy - transfer from Q-2 to Q-1
16	blood sample per Dr. Beth, SL:P
21	abnormal listing left
22	normal buoyancy
March 16	abnormal listing left
17	normal buoyancy
28	abnormal listing left
29	normal buoyancy
April 1	abnormal listing left
2	normal buoyancy
3	abnormal listing left
4	(pm) normal buoyancy
7	(am) abnormal hind buoyant (pm) normal buoyancy
8	abnormal listing left
9	normal buoyancy
15	abnormal listing left
16	normal buoyancy
25	(am) abnormal listing left (pm) normal buoyancy
26	abnormal listing left
27	normal buoyancy
May 23	abnormal listing left
24	normal buoyancy
30	(pm) abnormal listing left
June 3	abnormal listing left
4	normal buoyancy
5	(am) abnormal hind buoyant (pm) abnormal listing left
6	(pm) normal buoyancy
7	transfer from Q-1 to Honu Pond

DATA ON TURTLES

Date: 6/27/07

Technicians: Kendall, John, Pi'i
(Mei Mei, Stacy, Nick, Marc Rice)

3 year olds

SHELL #	location	Pit Tag L Hind	Pit Tag R Hind	Weight (lbs)	SLC (cm)	observations
2	Honu Pond	470D134339	4527622564	28.4	43.7	2 plaque left side tongue *1cc tetracycline for bone marking
4	Honu Pond	470B2D232E	4529530B41	33.5	46.9	Mouth clean *1cc tetracycline for bone marking
5	Honu Pond	470A10290D	45261A0912	22.7	40.4	1 spot on tongue *1cc tetracycline for bone marking

SHELL #	location	Pit Tag L Hind	Pit Tag R Hind	Weight (lbs)	SLC (cm)	observations
2 year olds						
02	Honu Pond	4413150C0E	44143E1569	24.0	41.4	Mouth clean *1cc tetracycline for bone marking
04	Honu Pond	4422044375	441312156A 5mm Replaced 7/3/07	20.3	39.3	Mouth clean
05	Honu Pond	4414633F5A	441337543F	17.7	38.4	Mouth clean
06	Honu Pond	4414266762	44141F3F1B	19.4	39.4	Mouth clean *1cc tetracycline for bone marking
07	Honu Pond	4413201B1E	4414050E19	19.9	39.6	Mouth clean
08	Honu Pond	452428001C	4529010543	19.1	40.0	1 spot upper pallet *1cc tetracycline for bone marking
09	Honu Pond	452830577B	45254E0E0D	20.8	40.3	2 plaque tip of tongue *1cc tetracycline for bone marking
10	Honu Pond	45267C3639	45241D2D03	21.6	38.7	1 spot tip of tongue
11	Honu Pond	4527601D38	45245E537D	15.6	36.2	1 (5mm) plaque tip of tongue

* = no tag

SHELL #	location	Pit Tag L Hind	Pit Tag R Hind	Weight kg / lbs	SLC (cm)	observations
M1	Atrium	470B571641	467C291C36*	1.2 / 2.5	20.9	Mouth clean
M2	Atrium	4709752136	470A114963	1.6 / 3.5	21.6	Mouth clean
M3	Atrium	470A063528	4709676F2C	2.3 / 5.0	24.7	Mouth clean
				kg / lbs	cm	
F1	Atrium	470C717212	4709741771	1.6 / 3.5	21.6	Mouth clean
F2	Atrium	470B380E27	470A1F1730	1.8 / 4.0	22.7	Mouth clean
F3	Atrium	470A39287A	470A014A18	0.8 / 2.0	19.1	Mouth clean - flattened plastron
F4	Atrium	470C2A223C	470B2C4056	1.4 / 3.0	21.0	Mouth clean

* = no tag

MAUNA LANI TURTLE EXAMS

6-13-07

The quarterly physical exams were conducted on the 21 turtles at the Mauna Lani. The 7 atrium turtles (1 year olds) were all normal and exhibited normal growth and weight gains. Marc Rice and students continued their study of growth comparison between the known male and female turtles.

Thirteen turtles were housed in the outside Honu pond and 1 turtle, (# 04), in the quarantine tank. All turtles had been feeding well and had normal growth and weight gains. All turtles were exhibiting normal swimming behavior.

Two turtles (#5 and # 04) had been exhibiting on and off abnormal behavior in the past. Turtle # 5 had a left tilt and # 04 had a floating problem. These abnormalities have been sporadic and short lasting. Several other turtles had been observed with short lived floating problems. The cause for this problem is undetermined but could be related to diet, ingestion of foreign material or even bristle worms. It does not seem to be a disease process.

Seven turtles were selected for the July 4th Independence Day release. These turtles were # 2, #4, #5 (the 3 year olds) and # 02, #06, #08, and # 09, (the 2 year olds). Blood was drawn for CBC and blood chemistries from the 7 turtles.

The blood values we rely on to determine health status were normal for all 7 turtles (total protein, albumen, globulin, glucose, calcium, phosphorus, potassium, uric acid, packed cell volume and white blood cell count). This is based on a comparison with over 50 past "normal" Mauna Lani turtle values. Abnormal values of less significance were found on turtles # 5 (reversal of heterophil/lymphocyte ratio and #06 (reversal of heterophil/lymphocyte ratio and low cholesterol).

Based on these findings I recommend release of the 7 turtles provided no abnormalities develop between now and the release date.

Recommendations were made to move turtle # 04 back into the Honu pond and to flush the Honu pond with freshwater to determine the bristle worm status (it has been over 6 months since the last flush).

Robert A. Morris.MS, DVM

TURTLE ID - 2 yr OLD				02	06	08	09
DATES 6/13/07							
VALUES (43-58)	MEAN	SD	RANGE	02	06	08	09
ALK. PHOS	154	87	30-357	58	64	80	84
ALT	42	63	2-359	18	6	7	5
AST	370	344	54-1716	334	178	198	274
CK	3405	7386	260-48416	223	408	446	1065
LDH	333	246	67-1143	166	130	149	191
ALBUMEN	1.6	0.4	0.8-2.3	1.4	1.7	1.8	1.5
TOTAL PROTEIN	4.0	0.8	2.5-5.5	4.1	4.0	4.2	3.5
GLOBULIN	2.4	0.4	1.7-3.3	2.3	2.3	2.4	2.0
BUN				-	-	-	-
CREATININE				-	-	-	-
CHOLESTEROL	180	57	75-273	142	48	153	137
GLUCOSE	143	35	88-219	126	127	152	134
CALCIUM	7.6	1.5	5-10.7	7.7	6.8	6.8	7.0
PHOSPHORUS	11.1	3.5	5.9-18.9	8.3	7.8	7.4	7.9
POTASSIUM	5.4	0.7	3.8-7.2	5.6	5.2	4.9	5.3
SODIUM	160	5.8	138-171	160	155	157	158
A/G RATIO	0.7	0.1	0.4-1.0	0.8	0.7	0.8	0.8
URIC ACID	0.8	0.3	0.3-1.6	0.3	0.3	0.2	0.4
CA/P RATIO							
WBC	11.5	5.6	3.7-29	17.5	17.0	11.5	11.0
HCT	31	6.7	17-45	35	32	30	29.5
HETEROPHILS %	32	13	10-64	37	54	15	27
LYMPHOCYTES %	56	14	24-80	53	29	78	73
EOSINOPHILS %	5	6	0-24	2	2	1	1
AZUROPHIL %	5	3	0-17	8	15	6	2
MONOCYTES %	1	2	0-6	0	0	0	0
BASOPHIL %	0.5	1.4	0-6	0	0	0	0
ABSOLUTE HET	3947	3325	680-18560	6475	9160	1725	2640
ABSOLUTE LYMPH	6324	3248	1924-18836	9275	4930	8970	8030
ABSOLUTE EO	480	647	0-2460	350	310	115	110
ABSOLUTE AZU	555	486	0-2320	1400	2550	690	220
ABSOLUTE MONO	111	189	0-715	0	0	0	0
ABSOLUTE BASO	12	45	0-222	0	0	0	0
COMMENTS							

TURTLE ID 34R OLD

2

4

5

DATES 6-13-07

VALUES (43-58)	MEAN	SD	RANGE	#2	#4	#5
ALK. PHOS	154	87	30-357	53	68	50
ALT	42	63	2-359	4	20	37
AST	370	344	54-1716	337	456	757
CK	3405	7386	260-48416	1331	348	635
LDH	333	246	67-1143	159	196	191
ALBUMEN	1.6	0.4	0.8-2.3	2.2	2.0	2.5
TOTAL PROTEIN	4.0	0.8	2.5-5.5	5.2	5.1	6.0
GLOBULIN	2.4	0.4	1.7-3.3	3.0	3.1	3.5
BUN				-	-	-
CREATININE				-	-	-
CHOLESTEROL	180	57	75-273	229	231	219
GLUCOSE	143	35	88-219	120	126	136
CALCIUM	7.6	1.5	5-10.7	9.6	8.6	8.0
PHOSPHORUS	11.1	3.5	5.9-18.9	8.0	7.9	7.9
POTASSIUM	5.4	0.7	3.8-7.2	6.0	5.2	5.1
SODIUM	160	5.8	138-171	164	160	160
A/G RATIO	0.7	0.1	0.4-1.0	0.7	0.6	0.7
URIC ACID	0.8	0.3	0.3-1.6	0.8	0.5	0.5
CA/P RATIO						
WBC	11.5	5.6	3.7-29	7.5	16.0	13.0
HCT	31	6.7	17-45	38	33	39
HETEROPHILS %	32	13	10-64	31	39	50
LYMPHOCYTES %	56	14	24-80	62	52	40
EOSINOPHILS %	5	6	0-24	2	2	1
AZUROPHIL %	5	3	0-17	5	7	9
MONOCYTES %	1	2	0-6	0	0	0
BASOPHIL %	0.5	1.4	0-6	0	0	0
ABSOLUTE HET	3947	3325	680-18560	2325	6240	6500
ABSOLUTE LYMPH	6324	3248	1924-18836	4650	8320	5200
ABSOLUTE EO	480	647	0-2460	150	320	130
ABSOLUTE AZU	555	486	0-2320	375	1120	1170
ABSOLUTE MONO	111	189	0-715	0	0	0
ABSOLUTE BASO	12	45	0-222	0	0	0
COMMENTS						

Freestyle Ocean Cruising with Hawaiian Sea Turtles – 11/1/07

Sea turtles are threatened and endangered species worldwide. Fortunately in Hawaii the native green sea turtle, known as "honu" in the Hawaiian language, has experienced an encouraging increase in numbers during recent years. Hawaii's conservation and research programs for sea turtles have been highly successful. Studies have resulted in an improved understanding of how sea turtles live their lives and what steps are needed to effectively protect them. However, one of the remaining unsolved mysteries is where and how small turtles live in the open ocean. From a newly born hatchling to about four years of age, green sea turtles live far from land. When older and larger they live in shallow water close to shore. To solve this puzzle a unique project is being conducted by NOAA Fisheries and the Hawaii Preparatory Academy in partnership with NCL America and Sea Life Park/Dolphin Discovery. Captive-bred one year old green sea turtles are being released into the open ocean carrying miniature radio transmitters. Signals sent to orbiting satellites will reveal the turtles' movements for 4-6 months until the batteries run out. Information on oceanographic features will be combined with trackings of the turtles to learn about their life away from land. The nine yearling turtles for this study are presently aboard the Pride of Hawaii. They will be released on Sunday afternoon, November 4th, off the north shore of Kauai. The turtles will be available daily for passenger viewing in a seawater pool on Deck 12. Please stop by to say hello to the turtles and their caretakers, George, Marc and Linda. On the world wide web, please visit www.hpa.edu/turtle.html.

Subject: Final satellite tracking maps for the 4 Sea Life Park/DD captive-bred green turtles released into pelagic waters from the NCLA Pride of Hawaii-October 2006

5-16-07

Dear Friends and Colleagues- Attached here are the final satellite tracking maps for our four turtles released north of Kauai on the Pride of Hawaii's "Honu Aloha Cruise 2006." The outcome of this study was very successful and considerable insight was obtained on the pelagic life and travels of young Hawaiian honu. In summary, signals from the transmitters lasted 98-200 days. Total distances traveled by the turtles (up, down, and around) ranged from 574-2500 miles (or 925-4023 km). The details for each turtle appear on the maps and are listed below.

A Sincere Thank You- Mahalo and Aloha- to SLP/DD, NCLA, POH captains, crew, staff, and passengers, KSSK, Contest Winners, HPA, Mauna Lani Resort, and all the other delightful and dedicated people we met and worked with during the course of this special study. Please freely share these maps and information with others. Best Regards, George Balazs

Nani Pupu (Argos ID 68335)

98 days

575 miles or 925 km

Open ocean component 35%

Near shore component 65%

Ha'aheo (Argos 68330)

127 days

1520 miles or 2447 km

Open ocean component 100%

Kaimakana (Argos ID 50144)

170 days

1457 miles or 2345 km

Open ocean component 51%

Near shore component 49%

'Au Ku'oko'a (Argos ID 68334)

200 days
2500 miles or 4023 km
Open ocean component 96%
Near shore component 4%

121

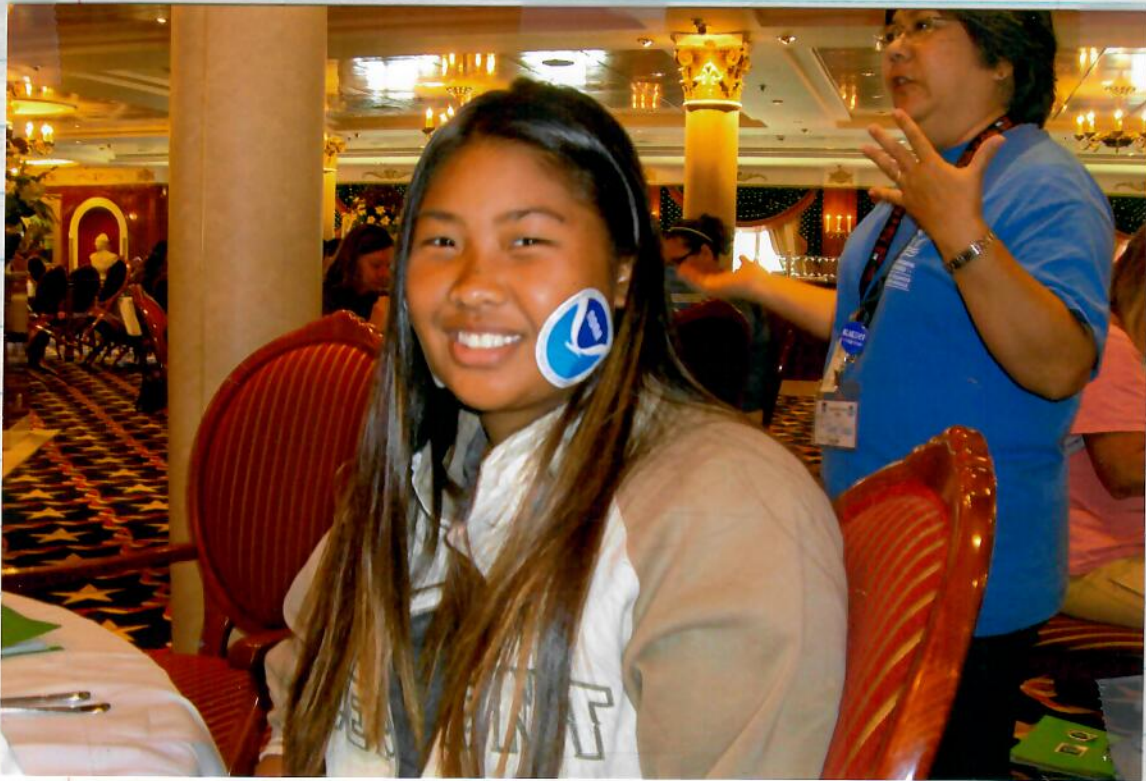
3 years old
ID 07

DATA ON MAUNA LANI TURTLE

ID: #2 (moto) / LF-YP 02 / RF-YR 02 / LH-470D134339 / RH-4527622564

Date	Weight (lbs)	SC Length (cm)	location	Comments
July 5, 2004				Hatched at Sea Life Park
1/05/05	0.64	12.3	SLP	
1/08/05	0.66	12.3	SLP	
Jan 12, 2005	-	12.9	Quarantine Tank - 2	Transferred to Mauna Lani
1/26/05	-	-		*see veterinarian report
2/26/05	1.21	15.4		*see veterinarian report plaque on mid tongue
4/05/05	1.73	17.2		*exam by G. Balaz/ T. Work
4/27/05	-	-		*see veterinarian report
6/22/05	-	-		*see veterinarian report
7/03/05	3.1	21.1	Atrium Pond (7/8/05)	Clean
7/27/05	3.6	22.2		No exam
8/31/05	3.8	23.1		*exam by G. Balaz/ T. Work
9/21/05	4.4	23.8		No exam
10/26/05	5.0	25.2		*see veterinarian report
1/05/06	6.5	27.4		*exam by G. Balaz/ T. Work
2/22/06	7.3	28.7	Honu Pond (2/1/06)	*see veterinarian report
4/26/06	-	30.1		No exam
5/31/06	9.6	31.5		No exam
6/21/06	10.4	32.3		*see veterinarian report
8/02/06	12.4	33.8	Lower salinity 23-25 ppt	1 plaque rt. tongue (<2mm) 8/10/06 (blood sample by Dr. Morris)
8/30/06	13.4	34.7		Clean
9/27/06	14.3	35.6		* see veterinarian report

Date	Weight (lbs)	SC Length (cm)	location	Comments
10/25/06	16.2	36.7		Clean
11/29/06	18.6	37.9	Q-1 (32 ppt)	Tongue >50% rugose plaque Throat upper/ lower rugose plaque
12/27/06	18.3	38.3		* see veterinarian report
1/31/07	20.4	39.4	Honu Pond	Mouth clean
2/28/07	20.4	39.9		Mouth clean
3/28/07	22.7	41.0		1 plaque left side tongue
4/25/07	24.3	41.7		Mouth clean
5/30/07	26.5	42.9		1 plaque right side tongue
6/13/07	27.3	43.4		Mouth clean * see veterinarian report / blood work
6/27/07	28.4	43.7		2 plaque left side of tongue * 1.0 cc tetracycline for bone marking



year old TDI 07

DATA ON MAUNA LANI TURTLE

ID: #4 (moto) / LF-YP 04 / RF-YR 04 / LH-470B2D232F / RH-4529530B41

Date	Weight (lbs)	SC Length (cm)	location	Comments
July 7, 2004				Hatched at Sea Life Park
1/05/05	0.78	13.4	SLP	
1/08/05	0.83	13.4	SLP	
Jan 12, 2005	-	13.9	Quarantine Tank - 1	Transferred to Mauna Lani
1/26/05	-	-		*see veterinarian report
2/26/05	1.61	16.5		*see veterinarian report clean
4/05/05	2.3	18.9		*exam by G. Balaz/ T. Work
4/27/05	-	-		*see veterinarian report
6/22/05	-	-		*see veterinarian report
7/03/05	4.5	24.4	Atrium Pond (7/8/05)	Clean
7/27/05	5.1	25.6		No exam * Left front tag missing
8/31/05	6.1	27.1		*exam by G. Balaz/ T. Work No front tags
9/21/05	6.7	28.0		No exam
10/26/05	8.1	29.6		*see veterinarian report
1/05/06	10.8	32.4		*exam by G. Balaz/ T. Work
2/22/06	11.7	33.8	Honu Pond (2/1/06)	*see veterinarian report
4/26/06	-	35.6		No exam
5/31/06	15.7	36.9		No exam
6/21/06	16.0	37.5		*see veterinarian report & blood test
7/03/06	17.0	37.9		*see George Balaz report
8/02/06	18.5	38.9	Lower salinity 23-25 ppt	Clean
8/30/06	20.0	39.7		Clean

Date	Weight (lbs)	SC Length (cm)	location	Comments
9/27/06	21.4	40.6		* see veterinarian report
10/25/06	22.5	41.3		2 spots on tip of tongue
11/29/06	23.4	42.2	(32 ppt)	Clean
12/27/06	24.1	42.8		* see veterinarian report
1/31/07	26.5	43.5		2 (3-5mm) right side tongue
2/28/07	26.5	44.0		2 (3-5mm) right side tongue
3/28/07	28.7	44.5		Mouth clean
4/25/07	31.2	45.1		Mouth clean
5/30/07	31.8	46.1		Mouth clean
6/13/07	32.4	46.6		Mouth clean * see veterinarian report / blood work
6/27/07	33.5	46.9		Mouth clean * 1.0 cc tetracycline for bone marking

ID: #5 (moto) / LF-YP05 / RF-YR05 / LH-470A10290D / RH-45261A0912

Date	Weight (lbs)	SC Length (cm)	location	Comments
10/25/06	15.8	36.3		Mouth clean
11/29/06	16.0	36.9	(32 ppt)	1 plaque (5-7mm) tip tongue
12/27/06	16.8	37.3		* see veterinarian report
1/31/07	17.2	38.0		Mouth clean
2/28/07	17.4	38.1	Q-1	Mouth clean Abnormal buoyancy
3/28/07	19.1	38.5		Mouth clean / abnormal buoyancy Blood work
4/25/07	20.1	39.2		Mouth clean
5/30/07	21.3	39.9		1 plaque tip of tongue 1 plaque left side tongue
6/13/07	21.7	40.5		1 spot mid tongue * see veterinarian report / blood work
6/27/07	22.7	40.4		1 spot mid tongue * 1.0 cc tetracycline for bone marking

3 years old
11/07

DATA ON MAUNA LANI TURTLE

ID: #5 (moto) / LF-YP05 / RF-YR05 / LH-470A10290D / RH-45261A0912

Date	Weight (lbs)	SC Length (cm)	location	Comments
July 7, 2004				Hatched at Sea Life Park
1/05/05	0.67	11.9	SLP	
1/08/05	0.71	12.0	SLP	
Jan 12, 2005	-	12.8	Quarantine Tank - 1	Transferred to Mauna Lani
1/26/05	-	-		*see veterinarian report
2/26/05	1.41	15.5		*see veterinarian report clean
4/05/05	1.82	17.0		*exam by G. Balaz/ T. Work
4/27/05	-	-		*see veterinarian report
6/22/05	-	-		*see veterinarian report
7/03/05	3.9	22.4	Atrium Pond (7/8/05)	Clean
7/27/05	4.4	23.6		No exam
8/31/05	5.0	24.6		*exam by G. Balaz/ T. Work
9/21/05	5.1	25.0		No exam
10/26/05	5.7	26.3		*see veterinarian report
1/05/06	7.2	28.2		*exam by G. Balaz/ T. Work
2/22/06	8.1	29.4	Honu Pond (2/1/06)	*see veterinarian report
4/26/06	-	31.2		No exam
5/31/06	10.9	32.4		No exam
6/21/06	11.0	33.0		*see veterinarian report
8/02/06	13.2	34.0	Lower salinity 23-25 ppt	Clean 8/10/06 (blood sample by Dr. Morris)
8/30/06	14.2	34.8		Clean
9/27/06	15.3	35.7		*see veterinarian report



WEIGHT

Animal #	LFT	RFT	10/11/06	10/12/06	10/16/06	10/17/06
30	YT 95	YT 96		102	113	
32	WG 81	WG 82		72	87	
55	WG 60	WG 61	108			124
74	WF 01	WF 05	107			120
76	YT 67	YT 68	140			146
79	YT 71	YT 72	120			144
87	WF 77	WF 78	100			118
90	WF 18	WF 17	79			93
91	WG 40	WG 41	66			75
93	WG 54	YS 51	86			99
96	WF 79	WF 80	107			120
101	WF 73	WF 74	98			116

Transfer date October 18, 2006

SCL

10/11/06	10/12/06	10/16/06	10/17/06	PE/Comments
	8.5	8.8		Normal feeding & PE normal except for healing bite wound sites which were treated topically with betadine scrub, dried and applied 2% gentian violet
	7.2	7.6		Normal feeding & PE normal except for healing bite wound sites which were treated topically with betadine scrub, dried and applied 2% gentian violet
8.6			9.1	Normal feeding & PE normal except for healing bite wound sites which were treated topically with betadine scrub, dried and applied 2% gentian violet
8.5			8.8	Normal feeding & PE normal except for healing bite wound sites which were treated topically with betadine scrub, dried and applied 2% gentian violet
9.4			9.6	Normal feeding & PE normal except for healing bite wound sites which were treated topically with betadine scrub, dried and applied 2% gentian violet
8.8			9.3	Normal feeding & PE normal except for healing bite wound sites which were treated topically with betadine scrub, dried and applied 2% gentian violet
8.4			8.9	Normal feeding & PE normal except for healing bite wound sites which were treated topically with betadine scrub, dried and applied 2% gentian violet
7.6			7.9	Normal feeding & PE normal except for healing bite wound sites which were treated topically with betadine scrub, dried and applied 2% gentian violet
6.9			7.1	Normal feeding & PE normal except for healing bite wound sites which were treated topically with betadine scrub, dried and applied 2% gentian violet
7.9			8.3	Normal feeding & PE normal except for healing bite wound sites which were treated topically with betadine scrub, dried and applied 2% gentian violet
8.6			8.9	Normal feeding & PE normal except for healing bite wound sites which were treated topically with betadine scrub, dried and applied 2% gentian violet
8.3			8.9	Normal feeding & PE normal except for healing bite wound sites which were treated topically with betadine scrub, dried and applied 2% gentian violet

2 years old
TID 07

DATA ON MAUNA LANI TURTLE

ID: #02 (moto) / LF-YN 92 / RF-WE 02 / LH-4413150C0E / RH-44143E1569

Date	Weight (g)	SC Length (cm)	location	Comments
July 25 2005	30 g	5.2 cm	SLP	Hatched at Sea Life Park Dolphin Discovery
8/05/05	46	5.9		
8/19/05	69	7.0		
9/02/05	94	8.0		
9/19/05	160	9.6		
10/03/05	236	10.9		
10/19/05	260	11.6		
11/04/05	337	12.5		
11/23/05	439	13.6		
12/13/05	555	14.8		
1/02/06	680	15.8		
1/25/06	760	16.8		
2/15/06	878	17.4		
3/04/06	1034	18.3		
3/18/06	1189	19.3		
3/29/06	1363	20.2		
April 12, 2006	(lbs)	(cm)	ATRIUM	Transfer to Mauna Lani Bay Hotel RF tag missing
4/26/06	4.0 lbs	22.6 cm		Clean
5/31/06	4.9	24.6		Clean
6/21/06	5.8	25.9		*see veterinarian report
8/02/06	7.7	28.2	Lowered salinity 23-25 ppt	Clean
8/30/06	8.6	29.9		Clean

ID: #02 (moto) / LF-YN 92 / RF-WE 02 / LH-4413150C0E / RH-44143E1569

Date	Weight (lbs)	SC Length (cm)	location	Comments
9/27/06	9.9	31.0		* see veterinarian report
10/25/06	10.0	31.9		1 spot left side of tongue
11/29/06	11.3	32.8		Mouth clean
12/27/06	12.8	33.8		* see veterinarian report
1/31/07	14.4	35.5	Honu Pond	1 plaque (6mm) tip of tongue
2/28/07	14.3	36.0	Q-2	Mouth clean Abnormal buoyancy
3/28/07	16.5	37.1		Mouth clean
4/25/07	19.1	38.2	Honu Pond	1 plaque right side tongue
5/30/07	21.7	40.0		Mouth clean
6/13/07	22.9	40.9		Mouth clean * see veterinarian report / blood work
6/27/07	24.0	41.4		Mouth clean * 1.0 cc tetracycline for bone marking



DATA ON MAUNA LANI TURTLE

TID 07 year old

ID: #06 (moto) / LF-YN 96 / RF-WE 06 / LH-4414266762 / RH-44141F3F1B

Date	Weight (g)	SC Length (cm)	location	Comments
July 25 2005	30 g	5.2		Hatched at Sea Life Park Dolphin Discovery
8/05/05	44	5.8		
8/19/05	55	6.6		
9/02/05	77	7.6		
9/19/05	108	8.8		
10/03/05	145	9.8		
10/19/05	185	10.2		
11/04/05	225	11.4		
11/23/05	309	12.5		
12/13/05	366	13.4		
1/02/06	457	14.2		
1/25/06	532	15.0		
2/15/06	646	15.7		
3/04/06	799	16.8		
3/18/06	849	17.5		
3/29/06	969	18.2		
April 12, 2006			ATRIUM	Transfer to Mauna Lani Bay Hotel
	(lbs)	(cm)		RF tag missing
4/26/06	3.1	21.0		Mouth clean
5/31/06	4.1	23.2		1 spot left side of tongue
6/21/06	4.6	24.6		*see veterinarian report
8/02/06	6.1	26.5	Lowered salinity 23-25 ppt	2 spots on left side tongue
8/30/06	7.1	28.0		1 plaque right side tongue (3mm)

ID: #06 (moto) / LF-YN 96 / RF-WE 06 / LH-4414266762 / RH-44141F3F1B

Di

Date	Weight (lbs)	SC Length (cm)	location	Comments
9/27/06	8.4	29.6		* see veterinarian report
10/25/06	9.1	30.8		Mouth clean
11/29/06	10.8	32.1		Mouth clean
12/27/06	11.6	33.2		* see veterinarian report
1/31/07	12.3	34.4	Honu Pond	Mouth clean
2/28/07	14.4	35.3		Mouth clean
3/28/07	15.7	36.2		Mouth clean
4/25/07	17.3	37.1		Mouth clean
5/30/07	18.0	38.6		1 plaque tip of tongue
6/13/07	19.1	39.1		Mouth clean * see veterinarian report / blood work
6/27/07	19.4	39.4		Mouth clean * 1.0 cc tetracycline for bone marking



DATA ON MAUNA LANI TURTLE

ID: # 08 (shell) / RF-WE 19 / LH-452830577B / RH-45254E0E0D

TIB 07 2-year old

Date	Weight (g)	SC Length (cm)	location	
July 25 2005	29.0	5.4	SLP	Hatched at Se Discovery
8/5/05	42.0	6.0		
8/19/05	55.0	6.6		
9/2/05	66.0	7.4		
9/19/05	92.0	8.5		
10/3/05	121.0	9.4		
10/18/05	151.0	10.1		
11/4/05	186.0	11.0		
11/23/05	251.0	12.0		
12/13/05	321.0	13.1		
1/2/06	375.0	14.0		
1/25/06	460.0	14.8		
2/15/06	506.0	15.2		
3/4/06	670.0	16.2		
3/18/06	819.0	17.6		
3/29/06	968.0	18.4		
4/18/06	1210.0	20.0		
5/8/06	1444.0	21.4		
6/4/06	1795.0	23.2		
6/22/06	2023.0	24.3		
7/10/06	2283.0	25.2		
7/28/06	2624.0	26.4		

DATA ON MAUNA LANI TURTLE

ID: # 08 (shell) / RF-WE 19 / LH-452830577B / RH-45254E0E0D

pag

Date	Weight (g)	SC Length (cm)	location	Comments
8/14/06	3052.0	27.6		
8/24/06	3208.0	28.4		
9/13/06	4050.0	30.0		
9/29/06	4400.0	31.2		
10/17/06	5100.0	32.3		
11/1/06	(lbs)	(cm)	Honu Pond	Transferred to Mauna Lani (11/1/06) Active and feeding well
11/2/06	11.2	33.7		No oral exam PIT tags inserted 11/6
11/29/06	13.1	34.9		Clean
12/27/06	12.6	35.5		* see veterinarian report
1/31/07	13.1	36.3		Mouth clean
2/28/07	13.2	36.6		Mouth clean
3/28/07	15.0	37.1		1 (1mm) plaque upper palate
4/25/07	16.1	37.9		Mouth clean
5/30/07	17.8	39.1		Mouth clean
6/13/07	18.5	39.6		1 spot upper palate * see veterinarian report / blood work
6/27/07	19.1	40.0		1 spot upper palate * 1.0 cc tetracycline for bone marking

DATA ON MAUNA LANI TURTLE

ID: # 09 (shell) / RF-WE 19 / LH-452830577B / RH-45254E0E0D

TIDOT
2 year old

Date	Weight (g)	SC Length (cm)	location	CC
July 25 2005	29.0	5.1	SLP <i>Hatched</i>	Hatched at Sea Discovery
8/5/05	44.0	6.0		
8/19/05	50.0	6.4		
9/2/05	74.0	7.4		
9/19/05	111.0	8.8		
10/3/05	137.0	9.8		
10/18/05	166.0	10.2		
11/4/05	210.0	11.0		
11/23/05	269.0	11.9		
12/13/05	338.0	12.8		
1/2/06	339.0	13.4		
1/25/06	455.0	14.4		
2/15/06	439.0	14.2		
3/4/06	558.0	15.2		
3/18/06	707.0	16.4		
3/29/06	390.0	17.3		
4/18/06	1023.0	18.8		
5/8/06	1189.0	20.0		
6/4/06	1589.0	21.9		
6/22/06	1806.0	23.1		
7/10/06	2237.0	24.2		
7/28/06	2624.0	25.8		

DATA ON MAUNA LANI TURTLE

ID: # 09 (shell) / RF-WE 19 / LH-452830577B / RH-45254E0E0D

page 2

Date	Weight (g)	SC Length (cm)	location	Comments
8/14/06	2989.0	27.0		
8/24/06	3322.0	27.8		
9/13/06	3900.0	29.3		
9/29/06	4220.0	30.4		
10/17/06	5020.0	31.6		
11/1/06	(lbs)	(cm)	Honu Pond	Transferred to Mauna Lani (11/1/06) Active and feeding well
11/2/06	11.5	33.0		No oral exam PIT tags inserted 11/6
11/29/06	12.9	33.9		1 plaque (1-2mm) left side tongue
12/27/06	13.4	34.6		* see veterinarian report
1/31/07	14.1	35.5		1 (2mm) plaque tip of tongue
2/28/07	14.4	36.0		Mouth clean
3/28/07	16.4	36.8		Mouth clean
4/25/07	18.5	38.1		1 plaque (3mm) left side tongue
5/30/07	19.8	39.2		1 plaque (3mm) tip of tongue
6/13/07	20.6	40.0		Mouth clean * see veterinarian report / blood work
6/27/07	20.8	40.3		2 plaque tip of tongue * 1.0 cc tetracycline for bone marking

