

BALAZS

KAPOHO

mead

COMPOSITION

~~FEB. 8-13, 2010 EXPEDITION NO. XVI~~  
~~FEB. 10-16, 2011 EXP. NO. XVII~~

OFFICIAL® 100 sheets • 200 pages  
9<sup>3</sup>/<sub>4</sub> x 7<sup>1</sup>/<sub>2</sub> in/24.7 x 19.0 cm  
wide ruled • 09918

MeadWestvaco Consumer & Office Products, Dayton, Ohio 45463 Made in Vietnam © 2007 MeadWestvaco Corporation

2 OF 2

KAPOHO



85



D2274

*spineless*

3

*KAPOTHO*

Location of Capture **MC Cove** Method of Capture **X NET capture**  
 data recorder **2/13/11** *Riv* date

straight carapace LENGTH **59.2 cm.** straight carapace WIDTH **47.4 cm.** head width  cm.  
 straight carapace NOTCH **58.7 cm.** D.B.  V.B.  flipper width  cm.  
 curved carapace LENGTH **61.5 cm.** curved carapace WIDTH **56.0 cm.**  
 LATERAL 1 **24.3 cm.** LATERAL 2 **22.3 cm.** LATERAL 3 **16.9 cm.**  
 PLASTRON LENGTH **48.9 cm.** PPS  Y/N  tumor score  oral Tumors   
 SEX **U** MF/undetermined TAIL LENGTH: TOTAL **12.5 cm.** CLOACA **8.0 cm.**  
 WEIGHT **65 lbs.** emaciation code

location	OLD TAGS	location	NEW TAGS
	<b>4768207208</b>		
	<b>476C736425</b>		

Samples Collected-- observations and remarks *Brownish/orange faeces in caudal*

*+ mototool 2nd L & R*

87

4

4

*snappers*  
Karoffo

Location of Capture <b>MC COVE</b>	Method of Capture <b>X NET NIGHT</b>
data recorder <b>Caylin</b>	date <b>2/13/11</b>

straight carapace LENGTH <b>62.3</b> cm.	straight carapace WIDTH <b>50.7</b> cm.	head width <b>—</b> cm.
straight carapace NOTCH <b>62.0</b> cm.	D.B. <b>0</b>	flipper width <b>—</b> cm.
curved carapace LENGTH <b>67.5</b> cm.	V.B. <b>0</b>	
	curved carapace WIDTH <b>60.0</b> cm.	
LATERAL 1 <b>24.2</b> cm.	LATERAL 2 <b>21.7</b> cm.	LATERAL 3 <b>18.2</b> cm.
PLASTRON LENGTH <b>52.1</b> cm.	Y/N tumor score <b>1</b>	oral tumors <b>N</b>
SEX <b>U</b>	PPS <b>N</b>	
MF/undetermined	TAIL LENGTH: <b>13.5</b> cm.	CLOACA <b>9.0</b> cm.
WEIGHT <b>74.3</b> lbs.	emaciation code <b>0</b>	

location	OLD TAGS
LH	470A101970
RH	47096F5663

location	NEW TAGS

Samples Collected-- observations and remarks *reddish brown juice in carrier*

- left eye are bilobed #1 } anterior } *Matches previous description of tumors*  
 - right eye are #1 } } *apparently no growth in 2 years since last capture.*  
 '+' mototool 2<sup>nd</sup> L&R

*Mangroveless Cove*  
 Location of Capture *KAPOHO* 5  
 Method of Capture *X net ~~land~~ night*  
 data recorder *Cylin* date *2/13/4*

straight carapace LENGTH 58.5 cm. straight carapace WIDTH 44.1 cm. head width — cm.  
 straight carapace NOTCH 57.8 cm. D.B.  V.B.  flipper width — cm.  
 curved carapace LENGTH 62.5 cm. curved carapace WIDTH 52.0 cm.  
 LATERAL 1 22.2 cm. LATERAL 2 19.3 cm. LATERAL 3 15.4 cm.  
 PLASTRON LENGTH 48.6 cm. PPS N Y/N tumor score  oral Tumors   
 SEX U M/F/undetermined TAIL LENGTH: 12.5 cm. TOTAL 8.5 cm. CLOACA  
 WEIGHT 73.5 gross lbs. emaciation 0 scale  
 location 18-27 NEW TAGS  

RH	4608041833	location	NEW TAGS
LH	460804287D		

Samples Collected-- observations and remarks  
- heart material for Valentine's Day

89

6

KAPPA 6

Location of Capture

Method of Capture

Blind Inlet Hot Pond		Scoop net-
data recorder Jordan	date 2/14/11	
2000 h		

straight carapace LENGTH  straight carapace WIDTH  head width

straight carapace NOTCH  D.B.  flipper width   
V.B.

curved carapace LENGTH  curved carapace WIDTH

LATERAL 1  LATERAL 2  LATERAL 3

PLASTRON LENGTH  PPS  Y/N  tumor score  oral Tumors

SEX  MF/undetermined TAIL LENGTH: TOTAL  CLOACA   
emaciation code

WEIGHT  emaciation code

location	OLD TAGS	location	NEW TAGS
LH	467B413D78		
RH	479D106444		

Samples Collected— observations and remarks

Red juice in canter

49

7

4-09 53.3 SCL  
48 lbs

KAROTTO

7

Location of Capture


Method of Capture

Blind Inlet Hot Pond		Scoop NET	
data recorder	Jordan	date	2/14/11 2000h

straight carapace LENGTH	60.0 cm.	straight carapace WIDTH	47.6 cm.	head width	cm.
straight carapace NOTCH	59.5 cm.	D.B.		flipper width	cm.
		V.B.			
curved carapace LENGTH	64.5 cm.	curved carapace WIDTH	58 cm.		
LATERAL 1	24.6 cm.	LATERAL 2	22.7 cm.	LATERAL 3	17.8 cm.
PLASTRON LENGTH	48.6 cm.	PPS	Y	tumor score	<input checked="" type="checkbox"/>
				oral Tumors	<input checked="" type="checkbox"/>
SEX	M/F/undetermined U	TAIL LENGTH:	TOTAL 13 cm.	CLOACA	8.5 cm.
WEIGHT:	70.5 lbs.	emaciation code			

location	OLD TAGS	location	NEW TAGS
RH	470B2D5E77		
LH	470A070775		

Samples Collected-- observations and remarks

PPS split scale →   
Red Juice in carrier

91

8

KAROTTO

8

Location of Capture *Blind Inlet Hot Pond* Method of Capture *Scoop Net*

data recorder *Jordan* date *2/14/11*  
2000 h

straight carapace LENGTH *70.6 cm.* straight carapace WIDTH *56.7 cm.* head width  cm.

straight carapace NOTCH *70.1 cm.* D.B.  flipper width  cm.

curved carapace LENGTH *75.5 cm.* curved carapace WIDTH *70.0 cm.* V.B.

LATERAL 1 *29.0 cm.* LATERAL 2 *26.6 cm.* LATERAL 3 *22.7 cm.*

PLASTRON LENGTH *56.4 cm.* Y/N tumor score  oral Tumors

SEX *M* PPS  TAIL LENGTH: TOTAL *20 cm.* CLOACA *14 cm.*

WEIGHT *115.5 lbs.* emaciation code

134.5 Gross

location	OLD TAGS	location	NEW TAGS
LH	4709701836		
RH	4701346171A		

Samples Collected-- observations and remarks

*Red juice in carries*  
*motototal 2nd LGR*

*ST*



EP

9

2-08  
SCL 52.8  
50.416

Location of Capture **Blind Inlet Hot Pond** Method of Capture **SCOOP NET**

data recorder **Jordan** date **2/14/11**  
2000 h.

straight carapace LENGTH **60.7 cm.** straight carapace WIDTH **48.4 cm.** head width

straight carapace NOTCH **60.3 cm.** D.B.  flipper width

V.B.

curved carapace LENGTH **65.5 cm.** curved carapace WIDTH **59.0 cm.**

LATERAL 1 **27.3 cm.** LATERAL 2 **24.6 cm.** LATERAL 3 **19.8 cm.**

PLASTRON LENGTH **50.3 cm.** Y/N tumor score **1** oral tumors **0**

SEX  M/F/undetermined PPS  TOTAL TAIL LENGTH: **13 cm.** CLOACA **8.5 cm.**

WEIGHT **77.0 lbs.** emaciation code

location	OLD TAGS	location	NEW TAGS
LH	4359317562		
RH	424F113561		

Samples Collected— observations and remarks

Left eye - ~~1~~ / #1 posterior conjunctiva  
1. #1 ant. & Dorsal.

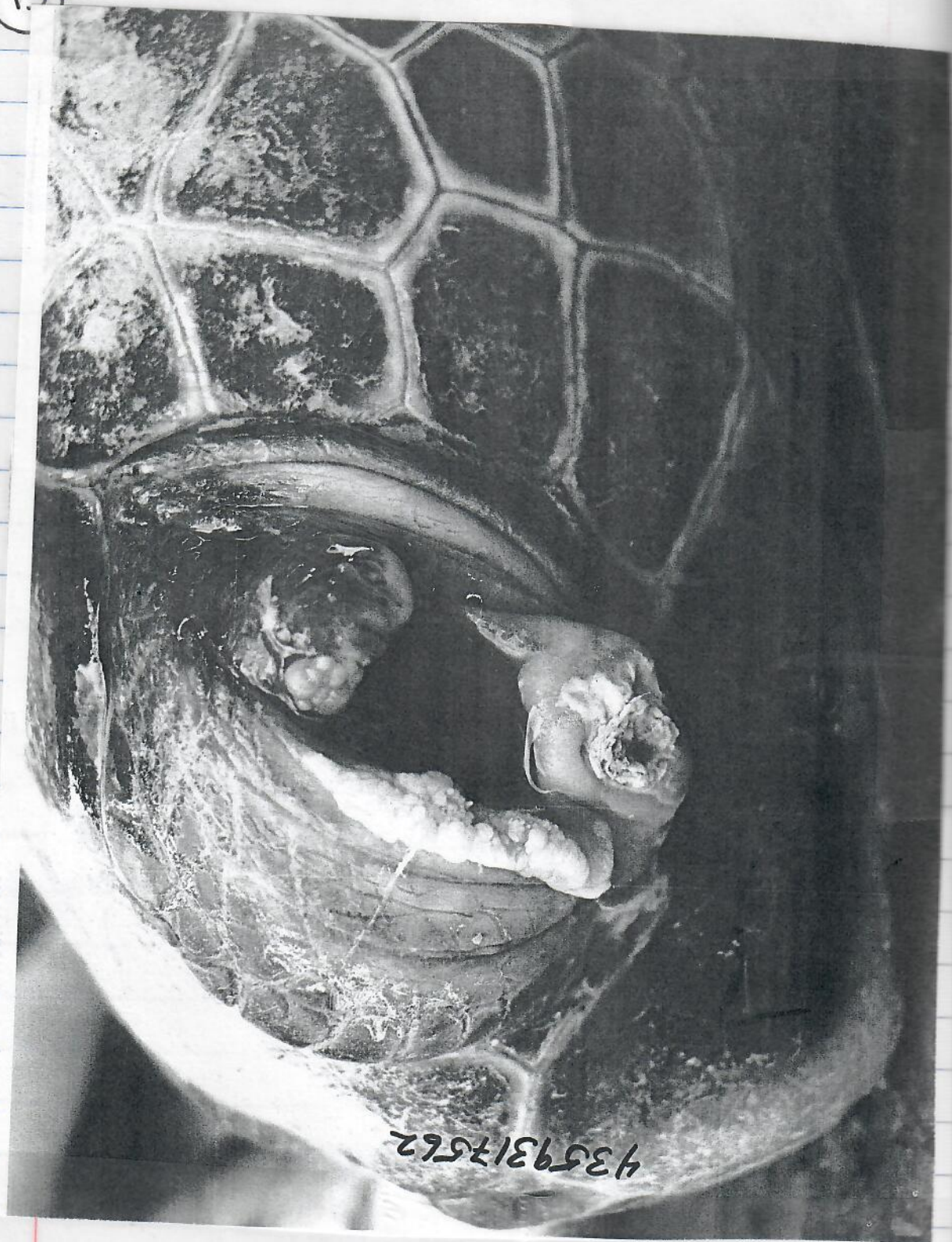
Right eye - discolored tissue ventral/ant. tumor 1#1

NO Tumors in 2008.

Red faeces in carrier

1st mototool 2nd LGR

93



4359317562



95

10

KAPOLLO 10  
04/09/11 C1 = 62.4 WT = 80

Location of Capture: **Blind Inlet** Method of Capture: **Snorkel Capture hand**

data recorder: **ZAC** date: **2/14/11**

2030h

straight carapace LENGTH: **68.0 cm.** straight carapace WIDTH: **55.9 cm.** head width: **— cm.**

straight carapace NOTCH: **67.5 cm.** D.B.:  flipper width: **— cm.**

V.B.:

curved carapace LENGTH: **73.0 cm.** curved carapace WIDTH: **66.0 cm.**

LATERAL 1: **27.6 cm.** LATERAL 2: **25.7 cm.** LATERAL 3: **21.3 cm.**

PLASTRON LENGTH: **55.5 cm.** Y/N tumor score: **7** oral Tumors:

PPS:  MF/undetermined

SEX: **U** TAIL LENGTH: **17 cm.** CLOACA: **11.5 cm.**

WEIGHT: **108 lbs.** emaciation code:

location	OLD TAGS	location	NEW TAGS
LH	46017C6814		
RH	452572103B		

Samples Collected-- observations and remarks

1 #1 tumor RFL Dorsal Distal -  
 Red Juice in canies  
 - 1 mototool 2nd L/R

11

570

KAROFFO

11

Location of Capture Blind Inlet	Method of Capture Smahel hand capture
data recorder ZAC	date 2/14/01 2030h.

straight carapace LENGTH 52.5 cm.	straight carapace WIDTH 41.0 cm.	head width cm.
straight carapace NOTCH 52.0 cm.	D.B. 0	flipper width cm.
	V.B. 0	
curved carapace LENGTH 56.5 cm.	curved carapace WIDTH 50.5 cm.	
LATERAL 1 22.2 cm.	LATERAL 2 19.8 cm.	LATERAL 3 15.5 cm.
PLASTRON LENGTH 42.5 cm.	Y/N Y	tumor score 1
	PPS Y	oral Tumors ∅
SEX MF/undetermined	TAIL LENGTH: TOTAL 11.5 cm.	CLOACA 7.5 cm.
WEIGHT 44 lbs.	emaciation code ∅	

location	OLD TAGS	location	NEW TAGS
LH	46 0227824		
RH	46 017E5A20		

Samples Collected-- observations and remarks

g-9 marginal right deep indentation (groove)  
 Left Eye - 1#1 Dorsal Lid  
 RT. Eye - 1#1 Long Thin - along ventral from Pos to Ant  
 Lt. Jaw Hinge 1#1 '-' mto too 2nd L/R  
 Red Juice in canier

97

12

~~12~~

Location of Capture **KAPoho** Method of Capture **(12)**

**Blind Inlet** **Hand capture**

data recorder **Kau** date **2/15/11** **SNORKEL**

straight carapace LENGTH **70.8** cm. straight carapace WIDTH **54.9** cm. head width **—** cm.

straight carapace NOTCH ~~70.0~~ cm. Same D.B. **0** flipper width **—** cm.

V.B. **0**

curved carapace LENGTH **76.0** cm. curved carapace WIDTH **65.5** cm.

LATERAL 1 **30.4** cm. LATERAL 2 **27.5** cm. LATERAL 3 **22.4** cm.

PLASTRON LENGTH **58.0** cm. PPS **N** tumor score **1** oral Tumors  No

SEX **undetermined** M/F/undetermined TAIL LENGTH: **18.5** cm. TOTAL CLOACA **12.0** cm.

$\frac{130.5}{-18.5}$  WEIGHT **112** lbs. emaciation code **0**

Tongue swollen & unusual looking - breathing

NEW TAGS

location	OLD TAGS
LH	4709640474
RH	4706694C3C

location	NEW TAGS
	Raspy?

Samples Collected - observations and remarks

Right eye # number 1

fecal sample collected - frozen

Peeling laterals 2<sup>nd</sup> & 3<sup>rd</sup> Lateral - Left. Posterior conjunctiva

" " 3<sup>rd</sup> & 4<sup>th</sup> " Right

— Cloaca Rugose tissue posterior of vent. — moto L & R 2<sup>nd</sup>

Pictures 9019, 9021, 9022, 9023, 9024 9015

13

Location of Capture Kapoho Method of Capture Hand Capture (13)

Blind Inlet

data recorder Kai date 2/15/11 Snorkel

straight carapace LENGTH 71.1 cm. straight carapace WIDTH 55.6 cm. head width — cm.

straight carapace NOTCH 70.9 cm. D.B.  flipper width — cm.

curved carapace LENGTH 76.0 cm. curved carapace WIDTH 72.5 cm. V.B.

LATERAL 1 29.5 cm. LATERAL 2 26.9 cm. LATERAL 3 21.8 cm.

PLASTRON LENGTH 59.3 cm. PPS  Y/N tumor score 1 oral Tumors

SEX undefined MF/undetermined TAIL LENGTH: TOTAL 17.5 cm. CLOACA 12.5 cm.

WEIGHT 121 lbs. emaciation code

location	OLD TAGS	location	NEW TAGS
LH	<del>4529</del> 4529618832		
<del>RH</del>	45241E70654		
RH	45241E7C54		

Samples Collected- observations and remarks

4th Lateral <sup>Right</sup> peeling

number 1 right eye posterior conjunctiva

motu 2nd L & R

Finished and Released at 1008

Photo = 9028, 9039-9032 -

99

14

Anguilliform Released at 1730+

Location of Capture MCO 1700 Method of Capture Net capture (14)

data recorder Kristen date 2/16/11

straight carapace LENGTH 53.2 cm. straight carapace WIDTH 42.2 cm. head width — cm.

straight carapace NOTCH 52.8 cm. D.B. 0 flipper width — cm.

curved carapace LENGTH 57.5 cm. curved carapace WIDTH 49.5 cm. V.B. 0

LATERAL 1 22.3 cm. LATERAL 2 19.4 cm. LATERAL 3 15.1 cm.

PLASTRON LENGTH 43.1 cm. Y/N tumor score 2 oral Tumors 0

SEX Undetermined M/F/undetermined PPS Y TAIL LENGTH: TOTAL 11.0 cm. CLOACA 7.5 cm.

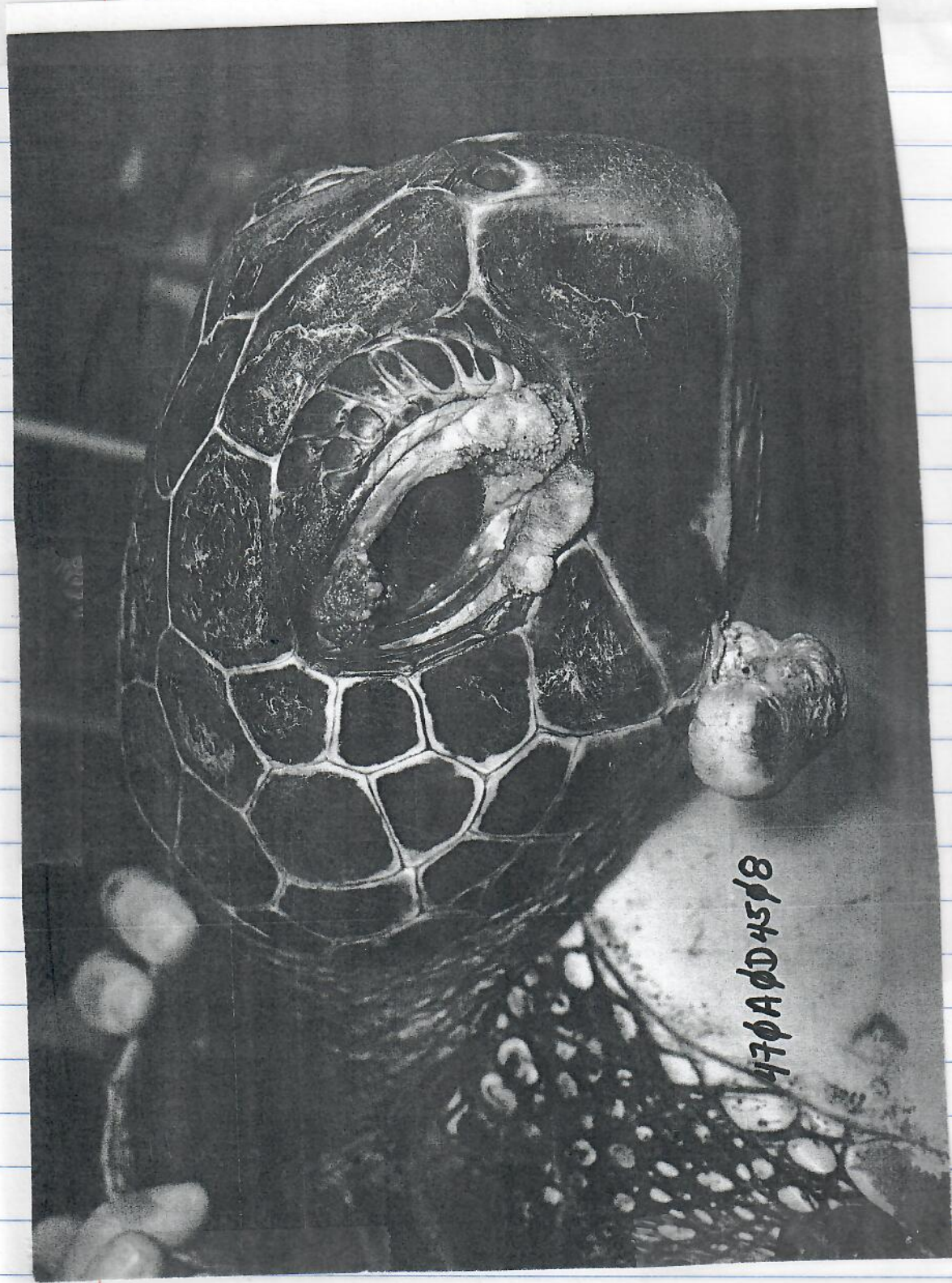
WEIGHT 47.0 lbs. emaciation code 0

location	OLD TAGS	location	NEW TAGS
LH	470A0D4508		
RH	470A385436		

Samples Collected-- observations and remarks

X motool still visible Right Eye 1#1 Dorsal Post  
 Left Eye 1#1 Dorsal Post 2#1 Ant.  
 Jaw huge Leeches in mouth 1#1 Ant. Ventral  
 1#1 Ant. 1#2 RT-Jaw hinge  
 RT Shella RFL 1#2 RT Hind  
 3#1, 1#2, 1#3 1#1 ventral RFL 1#1 base of flipper

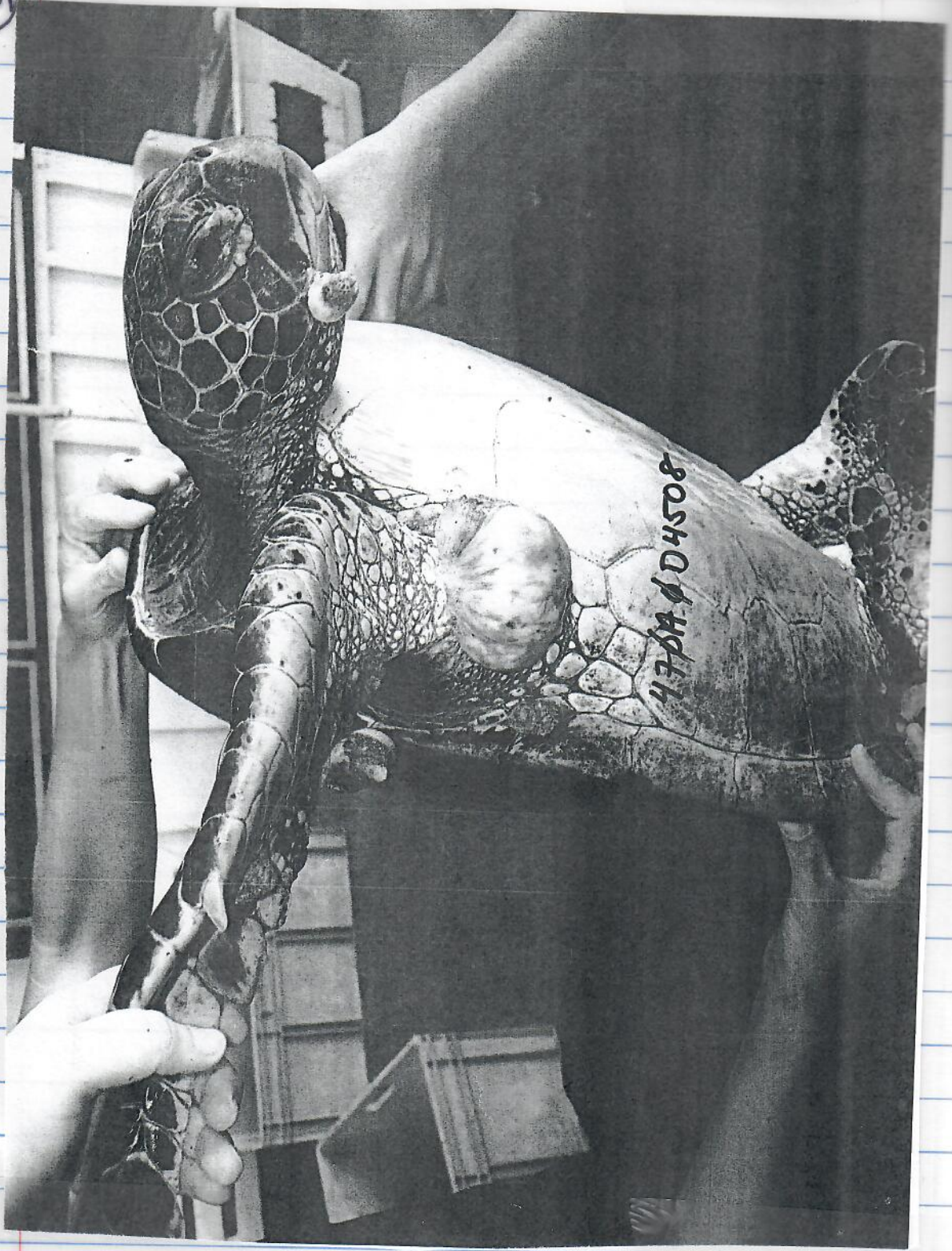




47φAφD45φ8

59

101



muscleless  
core

15  
Released at 1750

Location of Capture		Method of Capture	
MC	1700 hr	Net Capture	
data recorder Kristen		date 2/16/11	

straight carapace LENGTH	53.2 cm.	straight carapace WIDTH	41.8 cm.	head width	- cm.
straight carapace NOTCH	52.7 cm.	D.B.	0	flipper width	- cm.
		V.B.	0		
curved carapace LENGTH	57.0 cm.	curved carapace WIDTH	49.0 cm.		
LATERAL 1	19.6 cm.	LATERAL 2	18.1 cm.	LATERAL 3	13.9 cm.
PLASTRON LENGTH	42.5 cm.	Y/N	1	oral Tumors	0
		PPS	N	tumor score	1
M/F/undetermined		TAIL LENGTH:	TOTAL 11.0 cm.	CLOACA	7.0 cm.
SEX	U				
WEIGHT	40.5 lbs.	emaciation code	0		

location	OLD TAGS	location	NEW TAGS
RH	483B2C3E2F		
LH	485641297D		

Samples Collected-- observations and remarks

LH-1#2 Ventral Tip. Lft. Jaw hinge - Ragose Tissue  
 Left Eye 1#2 - NO vision Phlebotomy a little flat  
 RT. Eye suspicious white dot Ant/ventral  
 4' M to towel 2nd L/R

>> On Feb 5, 2011, at 2:39 PM, George H. Balazs wrote:

>>> Help me remember please- we need shell scrapings of tumored turtles at Kapoho- the contrast for what we collected at Kiholo (non-tumored native algae eaters vs Gracelaria eating).

>>> Sizes to about match SCL Kiholo: 54.0, 55.2, 56.6, and 64.4.

>>> Of course I'd rather not find any tumored at Kapoho. And on second thought, I'm not sure they need to be tumored for valid shell scraping comparison.

12-7-08

[ POLICE

#### NEIGHBOR ISLANDS

## 2 fishermen die after falling in sea

Two Big Island fishermen drowned yesterday after a big wave washed them out to sea off the Big Island, authorities said.

Police identified one of the men as Antonio Lagronio, 52, of Keaau, while the second man's identity was withheld last night, pending notification of next of kin. Lagronio's wife, who was at the scene, told police that the men were fishing together when a big wave crashed onto the rock and knocked them down at about 11:45 a.m., police said.

The unidentified fisherman, a 62-year-old Pahoa man, tried to pull his friend out of the water, but was swept out to sea, police said.

Firefighters found both men face down in the water about 250 yards from Kapoho Light-house.

Both men were unresponsive as they were taken to Hilo Medical Center, where they were pronounced dead.

Date: Thu, 24 Feb 2011 08:58:09 -1000  
From: Patty Belcher <pbelcher@hawaii.rr.com>  
To: George H. Balazs <gbalazs@honolab.nmfs.hawaii.edu>  
Subject: Re: Honu rescue

As you likely know, the entrance is to be kept completely open to a width of 3 feet. I am troubled (but not surprised) by your info since this 3 foot opening is reasonable for the common good in return for DLNR license to repair fishpond. Let me know if I can help in some way. I am willing to work to help wildlife.

I have long been troubled by the electric connection and pool light into the "Lyman pond," the terminus of the canal going past my mom's. It seems that an electric malfunction could prove dangerous. I located a state statute that prohibits lights in the water, but I was not sure how to approach DLNR, esp. after the way they came to my house aggressively to arrest me a couple of years ago after that false report was filed in my name. Perhaps something can be done about that as well? I know you are very busy and I am not inferring that you do this job as well, but just wanted to express my confusion at how to approach this.

With much aloha, and with gratitude and respect, too!

Patty

For  
Kapoho  
Book

Date: Mon, 21 Feb 2011 19:35:48 -1000  
From: Marc Rice <mrice@hpa.edu>  
To: George Balazs <gbalazs@honlab.nmfs.hawaii.edu>  
Cc: Marc Rice <mrice@hpa.edu>  
Subject: Kapoho

I mailed the data sheets along with some photos today... won't go out until tomorrow.  
You probably have the report from your team already but I wanted to let you know that we picked up a dead turtle at Blind Inlet on Wednesday (2/16). It was a 51 cm untagged green turtle that Sam and his worker found on the Barcell side of the inlet. It had been dead for a couple of days at least. I bagged it and brought it back to the freezer for future shipment.  
There was no apparent trauma and no tumors apparent.

A quick run-down on our capture work:

- 2/13- Picked up 5 turtles (one in inlet by Jill Quaintance) and 4 from Barcell s that evening.
  - 2/14- Picked up 4 in the hot pond and two more from blind inlet
  - 2/15- Spent 3 hours at the Makaha but did not have any turtles enter. Picked up two in blind inlet
  - 2/16- Spent 3 more hours at the Makaha without success..... Then netted two out of the back of Mangrove Cove
  - Snorkeled Champagne pond that night but there was only one turtle inside... it was a large female and I passed up on the opportunity.
- Total = 15

scl = ?/

Recaptures  
Short Term =

\*\*\*\*\*  
 Marc R. Rice  
 Director, Science and Technology  
 Director, Sea Turtle Research Program  
 Diving Safety Officer, AAUS  
 Hawaii Preparatory Academy  
 65-1692 Kohala Mt. Rd.  
 Kamuela, Hawaii 96743  
 www.hpa.edu/turtle.html  
 Phone: 808 881 4004  
 Cell: 808 987 6903  
 \*\*\*\*\*

Date: Wed, 23 Feb 2011 07:13:38 -1000  
From: Marc Rice <mrice@hpa.edu>  
To: George H. Balazs <gbalazs@honlab.nmfs.hawaii.edu>  
Cc: Marc Rice <mrice@hpa.edu>  
Subject: Re: Kapoho

it was found on the Barcell side of the inlet as indicated on the message(I don't know if that is his property or not... . It was not associated with the enclosed end of the inlet.

\*\*\*\*\*  
\*\*\*\*\*

Date: Sun, 13 Feb 2011 22:24:23 -1000  
From: Marc Rice <mrice@hpa.edu>  
To: George Balazs <gbalazs@honlab.nmfs.hawaii.edu>  
Cc: Marc Rice <mrice@hpa.edu>  
Subject: sunday night... Kapoho

*Kapoho Book*

We caught 5 turtles after you left. Jill caught the amputee with the line entanglement at 1645 hr and we worked it up and got the line off by 1730 hours. Set up the net at MC at 1830 h and captured 4 animals. All are tagged. One was very heavily tumored with lots of smaller tumors.. I think there were 73 in all. We worked it up as soon as we got home and got it back in the water--- it had no tumors when it was captured in 2008. The other three look fine ... robust and no external tumors.

Have a nice trip to Taiwan.

11

# Always on. For life.



Switch today and experience our Always On service — *for life*.  
Sign up for High-Speed Internet and Home Phone service  
and get a lifetime of savings.

Hawaiian Telcom



Date: Wed, 01 Dec 2010 07:52:52 -1000  
From: Tyler Bogardus <Tyler.Bogardus@noaa.gov>  
To: 'George H. Balazs' <gbalazs@honlab.nmfs.hawaii.edu>  
Subject: RE: Kapoho Champaign Pond- phone number of called?

Dirk Vanduesen, 989-5589 called 11/13/10 2:00pm. Kapoho, Champagne pond.

Thanks, sorry don't remember what happened here. I must of just never got a hold of him. I did leave a voicemail though.

-----Original Message-----  
From: George H. Balazs [mailto:gbalazs@honlab.nmfs.hawaii.edu]  
Sent: Tuesday, November 30, 2010 6:10 PM  
To: Tyler Bogardus  
Subject: Kapoho Champaign Pond- phone number of called?

Tyler recall the case you didn't recall at first, the one you took about ~2 weeks ago (?) "something metal" reported by a caller on a turtle at Kapoho Champaign Pond. You were going to call him back, but you never got an answer only voice mail. I'll call him, since I'm very familiar with Kapoho- please give me the man's name and phone number. Thank you.

harmonic tremor began and quickly increased to a level that obscured individual earthquakes on the seismic records.

At 11:18 p.m., the sustained high-amplitude seismic activity triggered alarms in the homes of two HVO scientists, who reached HVO in a matter of minutes. Realizing the imminent possibility of a Mauna Loa eruption, they immediately notified park and Civil Defense authorities.

At 11:42 p.m., scientists at HVO noticed a small glow above Mauna Loa. In less than two minutes, a bright red-orange glow outlined the entire summit region, illuminating a fume cloud that rose thousands of yards above the volcano.

The source of the glow and fume — lava fountains within Mokuaweoweo — could not be seen by observers at HVO or at Puuulaula. For direct observation of the eruption, aerial reconnaissance was needed, and, by 1:50 a.m., July 6, HVO scientists were flying over the summit in a light plane.

Fissures erupting fountains of lava 65 to 130 feet high extended across the length of Mokuaweoweo and about half a mile down the volcano's southwest rift zone. Lava had flooded more than half the caldera floor and was cascading into three pit craters on the upper southwest rift zone.

At 2 a.m., as HVO scientists continued their aerial observations, eruptive fissures opened in Mauna Loa's northeast rift zone.



Lava fountains up to 65 feet high erupted from fissures on the north flank of Mauna Loa early Sunday morning, July 6, 1975.

COURTESY OF USGS

Voluminous aa flows fed by these fissures moved swiftly down the north and northeast flanks of the volcano, putting the Mauna Loa Observatory access road in jeopardy and downslope residents on alert.

By dawn, the caldera and southwest rift zone fissures had stopped erupting, but the northeast rift zone fissures remained active for another 12 hours. Aa lava eventually overran parts of the summit hiking and jeep trails but did not cut off the Mauna Loa Observatory road. Fortunately, the potentially hazardous flows stagnated and ultimately stopped long before reaching inhabited areas.

The eruption ended around 7:30 p.m. July 6 — less than 24 hours after it began — but for Park Ranger Fink, the drama wasn't over. He spent an unexpectedly exciting Sunday night alone

at Puuulaula, with small earthquakes rumbling through the cabin every few minutes. Except for anxiety and loss of sleep, he was unscathed and was picked up by helicopter the next day.

With the center of seismicity shifting to Mauna Loa's northeast rift zone, HVO scientists and public safety officials remained on 24-hour watch, concerned that a possible lower-elevation eruption could threaten Hilo. Their worry lessened on July 10, when seismic activity noticeably waned. By July 20, seismicity had returned to pre-eruption levels, and the summit had stopped inflating.

Mauna Loa slept once again, but only until March 1984, when it erupted for 22 days. Since then, Mauna Loa has been quiet, exceeding its 25-year-long slumber prior to the 1975

eruption.

### Kilauea activity update

Over the past week, activity on the east rift zone flow field remained focused on the construction of low lava shields high above the pali. Some lava flows shed from the shields likely advanced a short distance toward the south and southeast, but none were reported to have crested the top of the pali. No surface flows have been reported on the pali or coastal plain for the last several weeks. The only incandescence observed at Puu Oo crater was from a small opening midway up the vertical eastern wall of the crater.

At Kilauea's summit, a circulating lava pond deep in the collapse pit within the floor of Halemaumau Crater was visible via the webcam throughout the past week. The baseline lava level was punctuated

# **VOLCANO:** In March 1984, Mauna Loa erupted for 22 days

sporadically by short-lived lava-level increases. Volcanic gas emissions remain elevated, resulting in high concentrations of sulfur dioxide downwind.

Two earthquakes beneath Hawaii Island were reported during the past week. A magnitude 2.7 earthquake occurred at 1:51 a.m. on Tuesday and was located 8 miles west of Kaena Point at a depth of 5 miles. A magnitude 3.6 earthquake occurred at 8:55 a.m. on the same day and was

located 6 miles northwest of Kaena Point at a depth of 22 miles.

Visit the HVO website ([hvo.wr.usgs.gov](http://hvo.wr.usgs.gov)) for detailed Kilauea and Mauna Loa activity updates, recent volcano photos, recent earthquakes and more; call 967-8862 for a Kilauea summary; e-mail questions to [askHVO@usgs.gov](mailto:askHVO@usgs.gov).

**Volcano Watch** is a weekly article and activity update written by scientists at the U.S. Geological Survey's Hawaiian Volcano Observatory.

165

Date: Sun, 14 Feb 2010 17:22:06 -1000 (HST)  
From: George H. Balazs <gbalazs@honolab.nmfs.hawaii.edu>  
To: Mark and Nancy Blackwell <Blackwell\_Mark@hotmail.com>  
Subject: Information to consider about possibly moving Sam the sea turtle

Dear Mark and Nancy- I'm sorry I wasn't able to meet you in person when you visited the Barsells' on Friday. As Marc Rice my colleague from HPA mentioned, I was out in the water tending our net to ensure any captured turtles would be cared for.

Regarding a possible move for Sam to the Barsells' pond system, I can't advise you on the legalities of such a possible plan (the question Marc conveyed to me from your speaking to him). I'm not the proper person to ask, I'm not aware of the law in that regard, that would be something to sort out by our NOAA Office of Law Enforcement, and also the US Fish and Wildlife Service, and the State of Hawaii DOCARE (the other law enforcement agencies responsible). But, as a sea turtle scientist, I can and would be happy to advise you on the relevant biology and science aspects of considering such a move.

Please see the attached picture of one of the turtles captured at the Barsells' property pond system the day you were there. Turtles with fibropapilloma tumors like this, but most often of lesser affliction, are not uncommon on the Barsells' property side of Kapoho Bay. The disease has an infectious component, linked to an alpha-herpes virus (but non-infectious to humans) coupled to some as yet unknown environmental co-factor. We don't know all the answers about this disease, but my disease-specialist colleagues and I have published many journal papers about the affliction over the past 20 years. I'd be happy to send you several pdf's of these papers, if you would like. The bottom line is that the pond where Sam has lived for 40+ years, without contracting tumors, is a very different pond ecosystem than the Barsells' ponds. The latter 1) are far more exchanging of direct ocean water via the porosity of the rock walls, and 2) constitute a small 'hotspot' where many turtles aggregate, including turtles with tumors. Hence there would be a real concern for Sam becoming infected with the tumor disease--- or at minimum one could logically surmise that his chances of getting the disease would be higher than they are now at his present pond location.

Might you have spoken with the property owner of the pond where the turtle Albert is kept? That might be useful in deciding where to move Albert- if that is what you wish to accomplish, and if it is legal to do so. Note that where ever Sam might be moved, there would have to be assurance that he is now fully healthy, in order to protect turtles (such as wild turtles and Albert) at the location where Sam might be moved to. What I mean is, ensuring a two-way street of healthiness, for Sam and for the turtles he would be closer to.

I hope the above is useful. I don't have the Barsells' Family email address, so if you do have it, would you please send to me so I can share this message with them. They have consistently been exceedingly gracious in allowing us to work with the turtles from their property. Best Regards, George Balazs

George H. Balazs, Leader  
Marine Turtle Research Program  
NOAA, National Marine Fisheries Service  
Pacific Islands Fisheries Science Center

2570 Dole Street  
Honolulu, Hawaii 96822-2396 USA  
Tel: (808) 983-5733  
Fax: (808) 983-2902

gbalazs@honlab.nmfs.hawaii.edu

(167)



Kapotto February 2010 photos  
(left to right)

170



72



February 2010



→ ROADWAY FILL CREATED ACROSS POND AREA. SEVERAL OTHERS PREVIOUS DONE



174



February 2010



Sat, 26 Dec 2009, Patty Belcher wrote:

Yesterday's Tribune Herald had an article about Marc Rice and release of 4 turtles. I tried to find it after everyone finished the paper, but it had vanished!

Kapoho Beach Lots still pedestrian-phobic, will not talk to Planning Dept about allowing walkers in. I talked to Planning Director, and all she wants is for the community to let walkers in and let them use the ocean accesses that are already established. Community President told "our" lawyer to write Director and tell her we will not talk with her. I guarantee this approach will escalate things! I emailed community about the "aloha" point of view, and got back a few nice and supportive emails, but also got back several emails saying I wanted to force Barsell blah blah and I threatened to sue Barsell blah blah! Then had four DLNR police come over to my house to ascertain who I was and "read me my rights!" This issue is not worth the stress to me. Someone must have wanted to frame me so used my name in an outrageous and bogus report to DLNR office. DLNR police were upset since bogus reports use their resources. Could even be more convoluted than that. I will stick to my grandson and father in law and do what I can there, and see what plays out in that paranoid community called Kapoho. Even the DLNR police called the place dysfunctional. Lots of kookie reports from there.

From  
PATTY  
BELCHER

Date: Mon, 1 Feb 2010 11:30:52 -1000  
From: Patty Belcher <pbelcher@hawaii.rr.com>  
To: George H. Balazs <gbalazs@honlab.nmfs.hawaii.edu>  
Subject: SHARK

A 6' white tip shark was sighted in Kapoho Bay on Thanksgiving Day. The turtle habits seem different to me. For example, there was a big old turtle, Ponder, that is missing now. And there was a little turtle, Squirt, who is also missing. Those two turtles have resided in the pond for a few years, with sightings maybe every other swim. No sightings since before Christmas. I have only seen TWO turtles since Christmas. The first had a chopped off flipper that was thick and white at the tip. The second has white stuff by the eye. For years, all was well and healthy (to my mind).

I am going to talk to my mom (definite - I want to ) but I am waiting for the right moment.

Many many thefts at Kapoho since articles in the paper showed up. The area is targeted as exclusive and wealthy. We are having maybe 8 or more break ins per week, up from 1 or 2 per month. Lock your cars, a lot of the thefts are from cars at night. If only the community could have shared our silly little road to WALKERS (not cars) then we would not have been in the paper, since Planning Director Bobbie Jean Leithhead would have been satisfied. Then the knowledge of the place would not have been so widespread and the resentment of Kapoho would be low. It is so important to share what we have!

My brother who owns Kapoho with Mom will be retiring this month. He will be living half time in Hawaii and I suspect he will want a more active hand in managing the Kapoho place next year. I spoke to mom in front of him and mom said she does not charge you anything for using the house. This may be true or may not be. Anyway, I told mom in front of Robby to keep using the place for turtle work, as the "highest and best use of that house." If it is not FREE accommodations for you, let me know since I may be able to help in that regard. There usually would still be a cleaning fee of \$100 or more. Let's just call your visits "enabling Honuamalu to reach its fullest potential."

Mom is doing great. We thank God for each year, and she has been aging and getting more forgetful each year. Thanks to you for the holiday wishes. Same good wishes to you and yours. Take care, and I will look fwd to seeing you here. Call if there is anything I can help with (640 4006). Much aloha, Patty

From  
PATTY BELCHER

Date: Tue, 2 Feb 2010 21:10:45 -1000  
From: Patty Belcher <pbelcher@hawaii.rr.com>  
To: George H. Balazs <gbalazs@honolab.nmfs.hawaii.edu>  
Subject: Re: Peaceful Place rental via Shareen

I finally had THE TALK with mom. It went just fine. She said that the rental managers always want some sort of income from a use of the house. She told them to give you a special rate, so they set the "affordable rate" which you have. You might be interested to know that special renters and long time friends get that rate. The rate you have is the best that can be done at this time. I will broach the subject when my brother is here, after things settle down. I am glad I checked into it, even tho' it will not change things for you. I am never in contact with the rental folks. I hope you enjoy your time at Kapoho. Please do not hesitate to call me if I can be of help.

With much aloha,      Patty Belcher  
cell 640 4006  
home 935 3939

179

JOHN BARSELL

Date: Fri, 19 Feb 2010 08:16:25 -0500  
From: sbarsell@aim.com  
To: gbalazs@honlab.nmfs.hawaii.edu  
Subject: Kapoho fish ponds

George,

I assume that you will prepare a report on your investigation of the turtles in Kapoho. I would appreciate it if you would send me a copy.

I have read your letter to the Blackwell's regarding the tumors on the turtles. I would assume that the disease is caused or spread by either or both the pollution in the Bay or by the congregation of turtles in a confined space. As you may know the rental houses around the Bay have do not have septic systems so that untreated sewage goes directly into the ocean. Water testing shows that the Bay does not meet Hawaii standards for clean water.

I want to close the malaha entrance to my fish ponds. It may be that you believe that allowing the turtles to congregate in large numbers in the ponds contributes to their health problems. If I had a letter from you recommending closing the Makaha I would use it to request that DLNR give me permission to do so. Of course, the closing would be coordinated with a turtle removal program. John Barsell

MAKAKA UNCOVERED  
2010 AFTER 5 MONTHS OF ROCK COVER,

180



FEBRUARY 2010 Photos



181

# SNORKEL

*and Whale Watch Adventures*



## DISCOVER

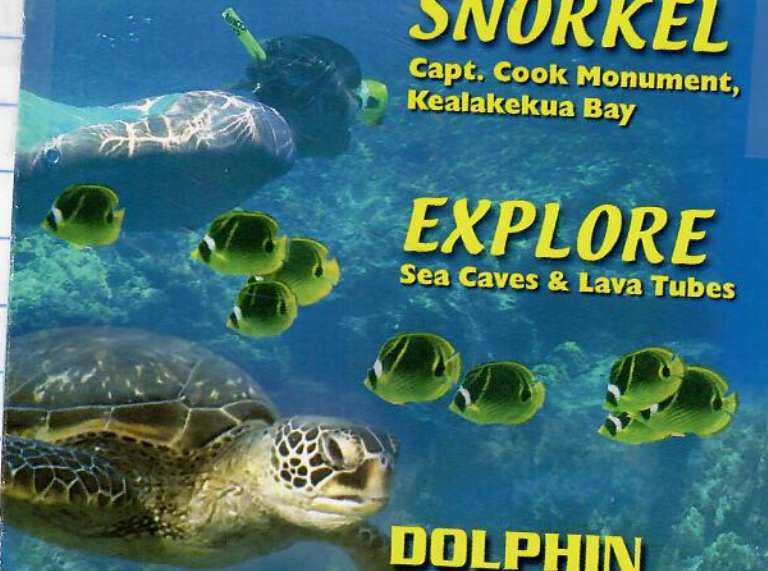
The Magical World of  
**DOLPHINS & WHALES**  
All Year Round!

*"This trip was by far  
the highlight of our  
vacation! Amazing!"*

*Jenine & Eric Unverzagt*

## SNORKEL

Capt. Cook Monument,  
Kealahou Bay



## EXPLORE

Sea Caves & Lava Tubes

## DOLPHIN DISCOVERIES

*Snorkeling  
with a difference...*

**(808) 322-8000**



[www.dolphindiscoveries.com](http://www.dolphindiscoveries.com)



183

~~0240510/312~~  
0240510/312  
476A18  
3807  
PIT

2/9/2010

page 29  
SCL = 64.1

LOCATION, SIZE, AND NUMBER OF TUMORS

	#1	#2	#3	#4	TOTAL	REMARKS
RIGHT EYE	1	1				
LEFT EYE	1	1				
MOUTH	1					just anterior of epiglottis
NECK						
RFF			1			(Small)
LFF			1			(Small)
RHF						
LHF						
CLOACA / TAIL						
SEAMS / SCUTES						
INTERNAL						
TOTAL						

ORAL TUMORS VISIBLE EXTERNALLY: YES OR NO

OTHER INFORMATION:

[Empty box for other information]

From P.45

2/12/2010

PIT 4672342AIE  
65.7 SCL

184

LOCATION, SIZE, AND NUMBER OF TUMORS

	#1	#2	#3	#4	TOTAL	REMARKS
RIGHT EYE	0		#1			no vision
LEFT EYE		1				
MOUTH		1	1			1#3 L Jaw hinge 1#2 R Jaw hinge
NECK	11	6				
RFF		6	11111			
LFF		111	11	1		
RHF		15	11			
LHF		8	111			
CLOACA / TAIL		11	1			
SEAMS / SCUTES	1					1#1 Plastron
INTERNAL						
TOTAL						

ORAL TUMORS VISIBLE EXTERNALLY: YES OR NO

OTHER INFORMATION:

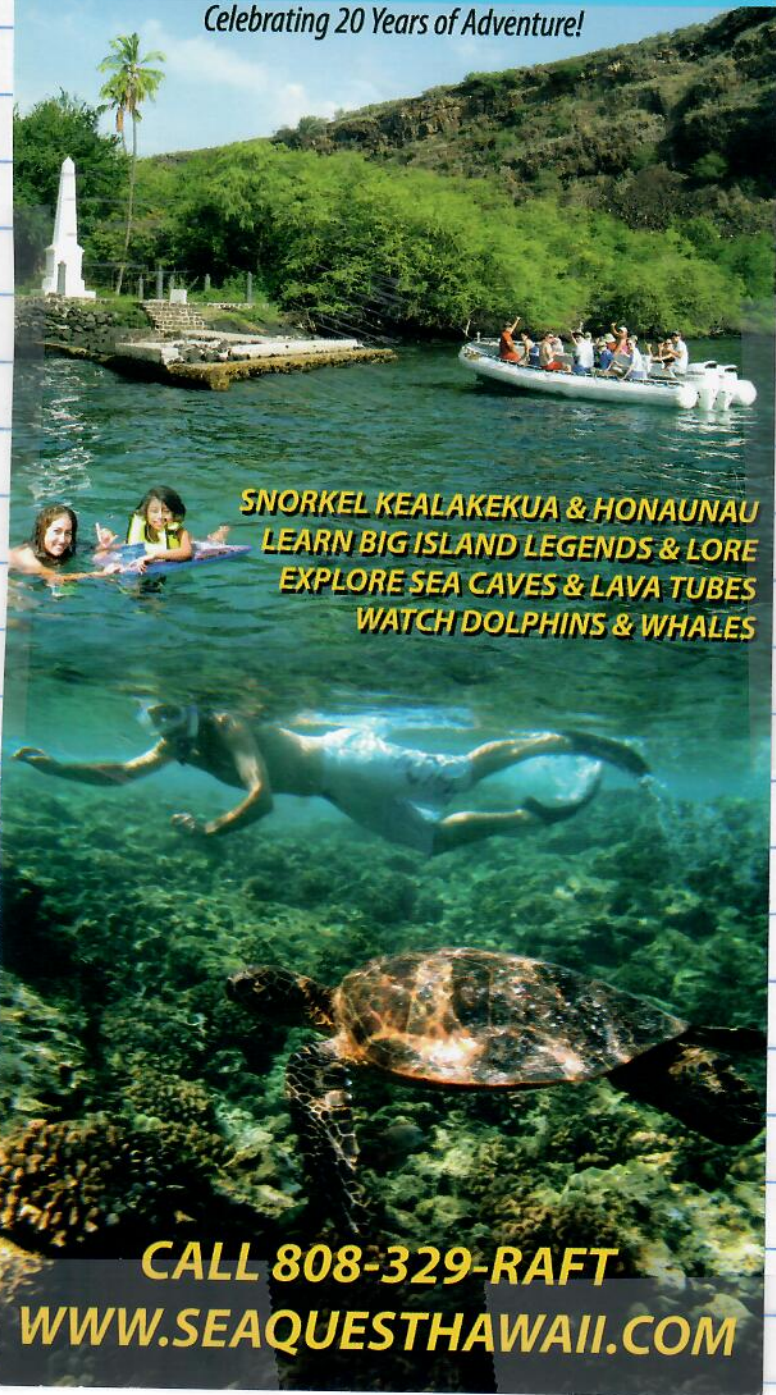
187

SEA  
QUEST

シュノーケリング

# SNORKELING ADVENTURE

Celebrating 20 Years of Adventure!



**SNORKEL KEALAKEKUA & HONAUNAU**  
**LEARN BIG ISLAND LEGENDS & LORE**  
**EXPLORE SEA CAVES & LAVA TUBES**  
**WATCH DOLPHINS & WHALES**

**CALL 808-329-RAFT**  
**WWW.SEAQUESTHAWAII.COM**

LOCATION, SIZE, AND NUMBER OF TUMORS

	#1	#2	#3	#4	TOTAL	REMARKS
RIGHT EYE						
LEFT EYE						
MOUTH						
NECK						
RFF						
LFF						
RHF						
LHF						
CLOACA / TAIL						
SEAMS / SCUTES						
INTERNAL						
TOTAL						

ORAL TUMORS VISIBLE EXTERNALLY: YES OR NO

OTHER INFORMATION:

189

Date: Fri, 27 Jan 2012 14:43:55 -0500  
From: Jennifer Keller <jennifer.keller@noaa.gov>  
To: George H. Balazs <gbalazs@honlab.nmfs.hawaii.edu>  
Subject: Kapoho 4414642E78 11/18/11

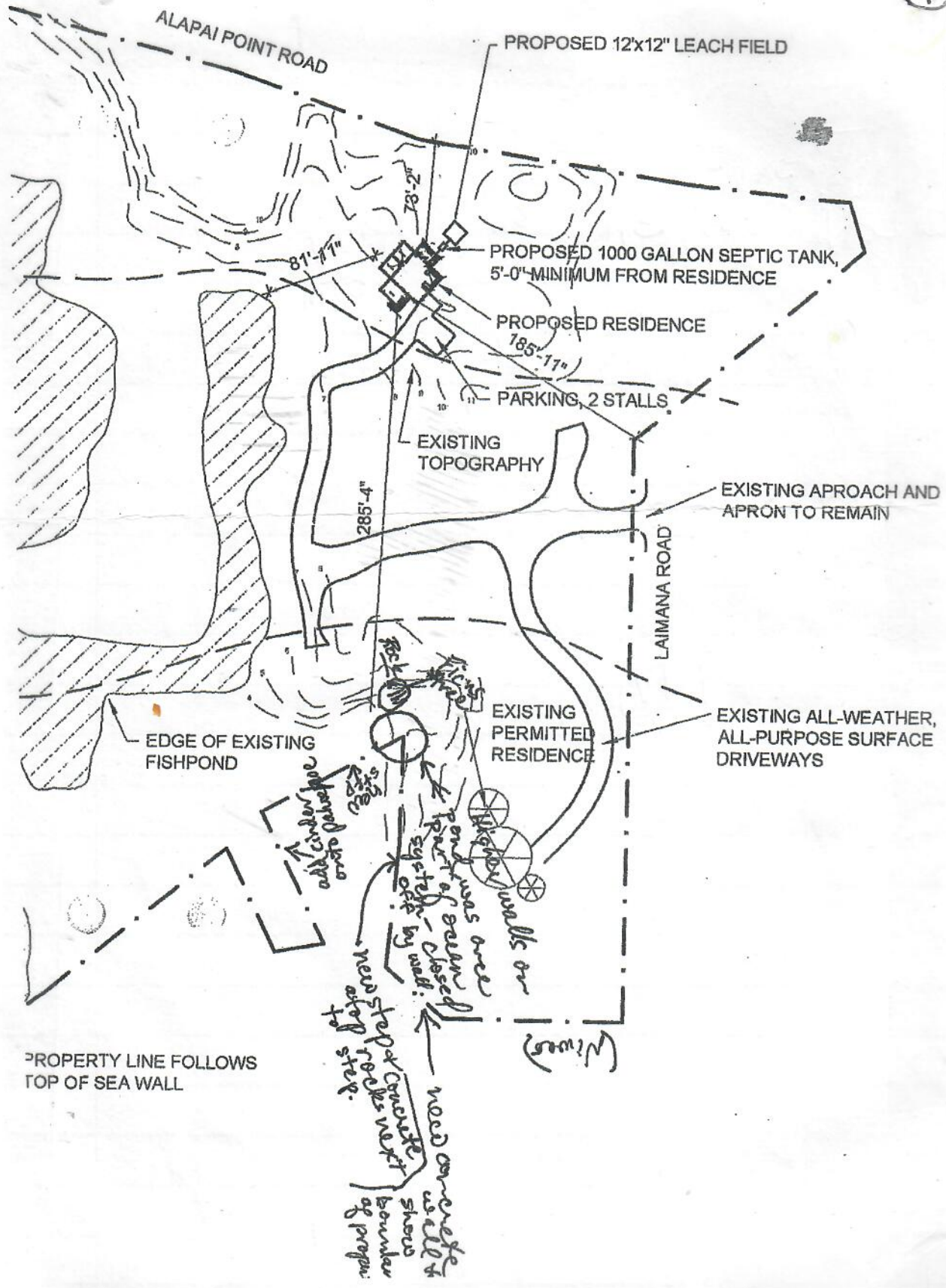
Hi George,

Im entering information from your field datasheets into our database and noticed something you can add to your datasheet from the turtle mentioned in the subject line. Its sex is definitely a male, because that's the one that showed us his penis.

Good memories from a fun trip.

Have a great weekend!  
Jenn

National Institute of Standard and TechnologyHollings Marine  
Laboratory  
331 Fort Johnson Road  
Charleston, SC 29412  
office: 843-725-4822  
lab: 843-762-8883



PROPERTY LINE FOLLOWS TOP OF SEA WALL

*add cinder pole onto polehole*

*point was raised*

*part of seawall set off by wall*

*need concrete as all the beams of prop.*

*need step of concrete rocks next to step.*

*thick walls on*

*(Wires)*

EDGE OF EXISTING FISHPOND

EXISTING PERMITTED RESIDENCE

EXISTING ALL-WEATHER, ALL-PURPOSE SURFACE DRIVEWAYS

EXISTING APPROACH AND APRON TO REMAIN

EXISTING TOPOGRAPHY

PROPOSED RESIDENCE

PROPOSED 1000 GALLON SEPTIC TANK, 5'-0" MINIMUM FROM RESIDENCE

PROPOSED 12'x12" LEACH FIELD

ALAPAI POINT ROAD

LAIMANA ROAD

PARKING, 2 STALLS

285'-4"

81'-7"

78'-2"

185'-11"

(191)

DANIELLE MARCH 2009 RE SAM

*Kapoho*

Date: Wed, 11 Mar 2009 11:41:34 -1000 (HST)  
 From: Danielle Woodward <djw@hawaii.edu>  
 To: George Balazs <gbalazs@honolab.nmfs.hawaii.edu>, John Coney <jconey@hawaii.edu>, Julien Christopher <julien@hawaii.edu>, Kevin Donmoyer <donmoyer@hawaii.edu>, Will Conner <william.connor@noaa.gov>, Jonathan Giddens <jonatha@hawaii.edu>, Bryce Edwards <bedwards@hawaii.edu>, Stacy Hargrove <stacy.hargrove@noaa.gov>, Tiffany Hooper <tiffany.hooper@noaa.gov>, Shawn Murakawa <shawn.murakawa@noaa.gov>, Irene Nurzai-hamburg <irene.nurzai-hamburg@noaa.gov>, Jason Turner <jpturner@hawaii.edu>, Judy Walker <joodiekay@yahoo.com>, KT Wills <ktwills@noaa.gov>  
 Subject: resend of Case H101

My apologies for the delay per George ~Ys request for the resend of case H101. I was out with the flu since Monday afternoon.

Turtle Case #H101  
 Date: 3/06/09  
 Persons responding: Bryce Edwards, Danielle Woodward, Julian Christopher  
 Time of Call: Email at 9:15; phone call at 10:30  
 Call received from: DLNR, resident Sandi  
 Location: Kapoho  
 Condition of turtle: Dead, tumored, very emaciated  
 Flipper Tags: N/A  
 Curved Carapace Length: 51"  
 Description of case:

An email was sent to Julian from DLNR of a dead turtle down at Kapoho on the lawn of one of the residents. Bryce and Danielle responded from UH Campus at 9:40. Sandi was called at 10:30 when we arrived on scene. The turtle was hauled out of the water and lying on the grass about 3 feet from the waters edge. It was a recent death due to the fact that the complete corps was no full of flies or disintegrated at all. The overall condition of the turtle was not well. There were many tumors around the eyes, mouth, and front flippers. Also its plastron was very sucked in. It was measured, bagged, and transported back to campus and stored in the freezer to await shipment.

Date: Thu, 7 May 2009 09:17:08 -1000  
From: "Imamura, Esther" <EIMAMURA@co.hawaii.hi.us>  
To: George H. Balazs <gbalazs@honlab.nmfs.hawaii.edu>  
Cc: "Kawaha, Alice" <akawaha@co.hawaii.hi.us>  
Subject: TMK: (3) 1-4-2:36 John Barsells

Good morning, George,

I was just give a November, 2008 complaint yesterday after I returned from a site inspection of this property - in response to a different complaint.

The anonymous complaint stated that "Turtle habitat is being lost through addition of rock and cincer on shoreline and in submerged area. I am unable to access a small pond at the toe of the 'foot' (foot shaped pond) which I land turtles) once accessed easilty."

Exact quote even if it doesn't quite make sense.  
I've attached a map which was submitted with the complaint; however, it doesn't denote the location of the turtle's landing area. I'm quite sure that you already have that information.

Esther Imamura  
(808) 961-8288, ext. 253 (Don't mind the Maija Cottle message, it's my phone extension)

COUNTY

ESTHER

IMAMURA

"TURTLE  
HABITAT LOST"

See map  
page 190

192



193

WHALE WATCH 2010 RE SAM

FEBRUARY 2010



2/2010 KAPOHO

194



195

8/30/10 KAYAK

Notes:

002767

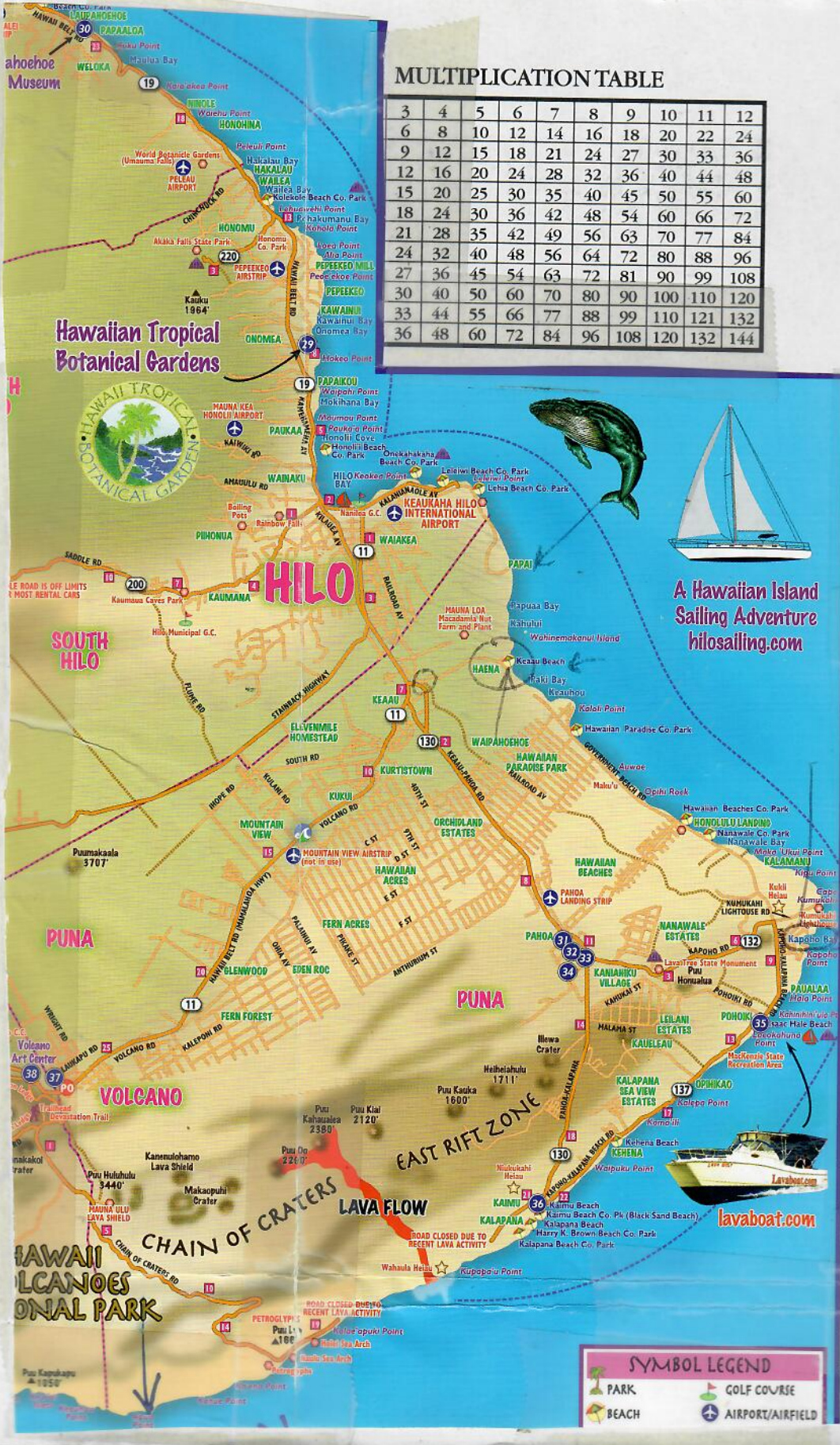
04/30/2009



**COSTCO**  
1 HOUR PHOTO

### MULTIPLICATION TABLE

3	4	5	6	7	8	9	10	11	12
6	8	10	12	14	16	18	20	22	24
9	12	15	18	21	24	27	30	33	36
12	16	20	24	28	32	36	40	44	48
15	20	25	30	35	40	45	50	55	60
18	24	30	36	42	48	54	60	66	72
21	28	35	42	49	56	63	70	77	84
24	32	40	48	56	64	72	80	88	96
27	36	45	54	63	72	81	90	99	108
30	40	50	60	70	80	90	100	110	120
33	44	55	66	77	88	99	110	121	132
36	48	60	72	84	96	108	120	132	144



= 100 cg = 1,000 mg  
 1 mg = .001 g  
 1 cg = .01 g  
 1 dg = .1 g  
 1 dkg = 10 g  
 1 hg = 100 g  
 1 kg = 1,000 g

A Hawaiian Island  
 Sailing Adventure  
[hilosailing.com](http://hilosailing.com)

a noun  
 noun to another  
 words or ideas  
 nation

recline.  
 cause.

a slight pause,  
 ously stated.

o form the  
 short stories,  
 zines,

**SYMBOL LEGEND**

- PARK
- BEACH
- GOLF COURSE
- AIRPORT/AIRFIELD

BEAT THE COMPETITION  
99¢

WONU IS A HANDCRAFTED LAGER  
BREWED WITH TROPICAL  
WATER IN THE HEAVENLY  
**FIJI ISLANDS**

ENJOY THE CLEAN, CRISP TASTE AND  
HELP US SUPPORT THE ENDANGERED  
**WONU DINA MAJESTIC**  
SEA TURTLE OF THE SOUTH PACIFIC.

**VONUBEER.COM**

**NO PRESERVATIVES** PURE INGREDIENTS WATER  
**SERVE COLD** Malted barley, sugar,  
wheat, hops & yeast

4.6% ALC/VOL 330ML **DRINK**  
BREWED AND BOTTLED AT THE RESPONSIBLY  
ISLAND BREWING CO. FIJI ISLANDS. **12** STANDARD  
DRINKS

 BREWSAWA TRUSTEE LTD, TRADING AS ISLAND BREWING  
COMPANY, EXCISE FACTORY NO. 6, LOT 2 KABANI RD,  
NADI, FIJI ISLANDS. PH +679 672 7093.

