

993 774 5935 0821

**PAPA**  
**COMPOSITION BOOK**

**BALAZS** George

4-17 JULY 2011

**JAPAN 2011**

MCI 003-481-1811

**NAGOYA**

2 of 3

Wide Ruled  
100 Sheets

9.75 in x 7.5 in (24.8 cm x 19 cm)



94

Date: Thu, 10 Nov 2011 18:06:06 -1000 (HST)  
From: George H. Balazs <gbalazs@honlab.nmfs.hawaii.edu>  
To: Tomomi SAITO <t-saito@nagoyaminato.or.jp>  
Cc: Marc Rice- HPA <mrice@hpa.edu>, DeniseM Parker <Denise.Parker@noaa.gov>, 'Masanori Kurita' <m-kurita@nagoyaminato.or.jp>, 'Director Makoto Soichi' <m-soichi@nagoyaminato.or.jp>  
Subject: Salmon net Hokaido-captured loggerhead returned to PNPA 11/2011

Thank you for the information about the recovered little turtle. If the turtle grew a little that does mean it had to have been feeding. Please even now collect whatever fecal pellets come, some may represent wild feeding-- so very important. I am glad no injuries. No appetite may be because of transport, adaptation to wild food, or low seawater temperatures its been in. How does the transmitter look? Did they turn it off? May we have pictures soon? Best Regards, George

On Fri, 11 Nov 2011, Tomomi SAITO wrote:

- > Dear George-san,
- > The rescued turtle have returned safely to PNPA and been in recuperation.
- > He has no external injuries but no appetite. SCL is 36.1 cm, BW is 8.4 kg.
- > He has grow a little. Now Dr. Yuka Kakizoe, veterinarian, looks into his
- > blood property.
- >
- > Best regards,
- > Tomomi Saito
- >

- >>
- >> I'm noticing you the information about recapture of 2 loggerhead turtles
- >> released from Sea of Japan. Details are below:
- >>
- >>
- >> ID: Cc09-44, Plastic tag: 540, Argos: 88060, released from off Noto peninsula on 15th July, 2011, recaptured by a Salmon set net around Shiretoko peninsula, east Hokkaido, on PM of 19th Nov., 2011. This turtle
- >> was already died and sent to PNPA.
- >>
- >>
- >>
- >> ID: Cc06-34, Plastic tag: 573, Argos: 23542, released from off Noto peninsula on 15th July, 2011, died and stranded on the Shichiri nagahama-beach, Tsugaru city, Aomori pref., on PM of 20th Nov., 2011.

- > The
- >> transmitter, plastic tag and etc. had sent to PNPA.
- >>
- >>

Date: Tue, 1 Nov 2011 19:03:07 +0900  
From: Tomomi SAITO <t-saito@nagoyaminato.or.jp>  
To: 'George H. Balazs' <gbalazs@honlab.nmfs.hawaii.edu>  
Cc: 'Masanori Kurita' <m-kurita@nagoyaminato.or.jp>,  
'Marc Rice- HPA' <mrice@hpa.edu>,  
'Director Makoto Soichi' <m-soichi@nagoyaminato.or.jp>  
Subject: RE: Important from George- Re: Recapture of loggerhead (57152)

Dear All,

Thank you for suggestion, but a curator of Shibetsu Salmon Museum says the turtle is not in good condition. He also says if the turtle is released near there but he will be caught again. In the Shibetsu Salmon Museum, there's no good reserve tank for keeping turtle. So, now we are considering to put him back to Nagoya and check his health, body weight, blood profile, and so on. And we want to wait a little longer for his recover and watch how the tag put off again. After the tag put off, of course, we will put it back to you soon.

Recapture site is N43.742, E145.124

Best regards,

Tomomi

> -----Original Message-----

> From: George H. Balazs [mailto:gbalazs@honlab.nmfs.hawaii.edu]  
> Sent: Tuesday, November 01, 2011 2:37 PM  
> To: Tomomi SAITO  
> Cc: 'Masanori Kurita'; 'Marc Rice- HPA'; 'Director Makoto Soichi'  
> Subject: Important from George- Re: Recapture of loggerhead (57152)

> Thank you Tomomi-san we very much appreciate the information. May I  
> suggest that the turtle be taken out to sea several kilometers and  
> released. This is the best thing so that our satellite tracking experiment  
> can continue. If there is nothing wrong with the turtle, that will be the  
> very best thing. Please advise. Best regard, George

> On Tue, 1 Nov 2011, Tomomi SAITO wrote:

> > Dear George-san,

> > I'm noticing you information about recapture of 1 loggerhead turtle  
> > released from Sea of Japan. Details are below:

> > ID: Ce09-36, Plastic tag: 532, Argos: 57152, released from off Noto  
> > peninsula on 15th July, 2011, recaptured by a Salmon set net around  
> > Shiretoko peninsula, east Hokkaido, on AM of 28th Oct., 2011. This  
> > turtle is still kept in the Shibetsu Salmon Museum.

> > Now we are discussing how we treat him.

> > Best regards,  
> > Tomomi Saito

57152  
= #48

3.5  
Month

LAST POSITION 11.9°C

G



96

Date: Thu, 22 Dec 2011 08:53:31 +0900  
From: Tomomi SAITO <t-saito@nagoyaminato.or.jp>  
To: 'George H. Balazs' <gbalazs@honlab.nmfs.haw  
Cc: 'DeniseM Parker' <Denise.Parker@noaa.gov>,  
Subject: RE: Recapture

Dear George-san,

Data of 88060 argos ID is as follows:

32.3- CL, 27.3cm SCW, 5.0 kg BW; une, 2011;  
33.1- CL, 27.4cm SCW, 6.0 kg BW; ov., 2011;

I will send back the transmitters to you soon.



Subject: 12/14/2011 mapping update for PNPA juvenile and subadult loggerheads released offshore from Kanazawa into the Sea of Japan on 7/15/11- 152 days transmitting

Attached are our partnership mapping updates for the Port of Nagoya Public Aquarium (PNPA) loggerheads released into the Sea of Japan offshore of Kanazawa on July 15, 2011. Marc Rice (Hawaii Preparatory Academy) and I were honored to have participated in the release with our close colleagues PNPA Tomomi Saito and Masanori Kurita. The turtles were released from a fishing vessel expertly operated by Captain Yoshino. The deployment was the first known effort to study satellite tagged loggerheads in the Sea of Japan. Loggerheads are known to occur in the Sea of Japan, and some nesting by loggerheads occurs on Japan's sand beaches bordering the Sea of Japan. A total of 31 loggerheads were released, consisting of 6 subadults and 25 juveniles (exact sizes of the turtles are shown on the attachment maps).

After 152 days since release, we currently have 14 of the 31 turtles continuing to transmit Argos locational data. Four of the turtles still transmitting are subadults, two of which are in the Sea of Japan, and two are in the North Pacific to the west of Japan. One of the subadults departed the Sea of Japan by way of Tsugaru Strait, and the other subadult left the Sea of Japan through La Perouse Strait.

Of the 10 juvenile loggerheads still transmitting, one has remained in the Sea of Japan (near Tsugaru Strait- see ID 19593 on the attached map), and 9 loggerheads are in the North Pacific. Of these 9, 8 left the Sea of Japan through La Perouse Strait, and one departed through Tsugaru Strait.

None of the 31 loggerheads have used the Korea Strait (to the south) to leave

the Sea of Japan.

An extremely valuable recovery of one of these satellite tagged loggerheads was made after being accidentally captured in a Salmon fishing net near Hokkaido. This turtle was returned alive to the PNPA under the professional coordination of PNPA Director Makoto and his staff. The importance of this recovery is that growth rate was able to be determined for the 3.5 months in the wild. This is the first such recovery for meaningful growth rate determination during our many years of collaborative research with Japan. I am pleased to report that the turtle did indeed grow, demonstrating that adaptation to the wild had started, after being reared its entire life 2.5 years in captivity. At the time of release the turtle weighed 7.2 kg, and the carapace measured 34.9 cm. When recaptured the turtle weighed 8.4 kg, and the carapace measured 36.1 cm.

For those of you that may be interested in journal publications of our past collaborative partnership research (Japan/Hawaii) on the pelagic ecology of Japanese loggerheads, I will shortly send you pdf's of these papers. Happy holidays, George Balazs



PRAYED FOR THEM  
 PRAYED TO THEM  
 TALKED TO THEM  
 HAD THEM PULL ME  
 FELT THEIR SPIRIT IN ME  
 FOUGHT (P&H BASKET)  
 PUT NECKLACE ON (yan-yan has now)  
 Met many people through them  
 Traveled many places due to them  
 DRIVEN WITH  
 POURED SAKI ON



- RESCUED
- CARRIED
- SAT WITH
- SLEPT WITH
- LAID DOWN WITH
- HUGGED
- KISSED
- CRIED WITH
- MAD AT
- HELPED LAY EGGS
- HELPED "GIVE BIRTH" (NEST)
- HATCHLING EYE TO STARS & UNIVERSE
- CAPTURED
- TOUCHED
- RELEASED
- STUDIED
- TAGGED
- KILLED
- BIO POSIED
- bled
- DISMEMBERED
- COOKED
- EATEN
- ATTACHED ELECTRONICS



# Buyers warned

*The Japan Times 7-16-2011*

## Faulty parts and shoddy designs take advantage of worried public

BLOOMBERG

In Tokyo's Akihabara electronics district, a Geiger counter sold under the brand name of Shanghai Ergonomics Detecting Instrument Co.'s DP802i costs ¥65,000.

For that price, twice the cost in China, it comes without a box, warranty or return policy.

Shanghai Ergonomics doesn't know how its device got onto the shelves at Akihabara as the company doesn't sell its Geiger counters directly overseas and offers a one-year warranty for models sold in China, Chairman Li Jinglei said.

Geiger counters, also known as dosimeters, have sold out and prices quadrupled in Tokyo because of worries about radiation fallout since the Fukushima crisis started in March. The demand spurred a gray market of "illegal" products that use faulty parts and shoddy designs or are fake, Li said. He declined to say how much it costs Shanghai Ergonomics to make the dosimeters.

Some of the devices on the Chinese market tested by the Shanghai-based company weren't hermetically sealed or stopped functioning within two or three days, Li said. He estimated a failure rate of about 70 percent for those models.

"It's by no means a high-tech product," said Huang Yinghong, a sales manager at Shenzhen

Xintaiheng Sci-tech Co., a Shenzhen-based seller of the devices. It takes about 20,000 yuan (¥245,000), 10 workers and commonly available circuit boards and chips to enter the Geiger counter business, Huang said.

Tokyo residents snapped up the devices after radiation readings in the capital soared more than 20-fold and tap water was temporarily deemed unsafe for infants in March.

Dosimeters sold out as far away as Germany after reactor meltdowns at the Fukushima No. 1 plant made the nuclear accident the worst since Chernobyl.

"It was a wave of panic buying," Huang said. "It was absolutely a seller's market," with some manufacturers selling out a year's worth of inventory in a week through March and April, he said. His shop has since restocked supplies, he said.

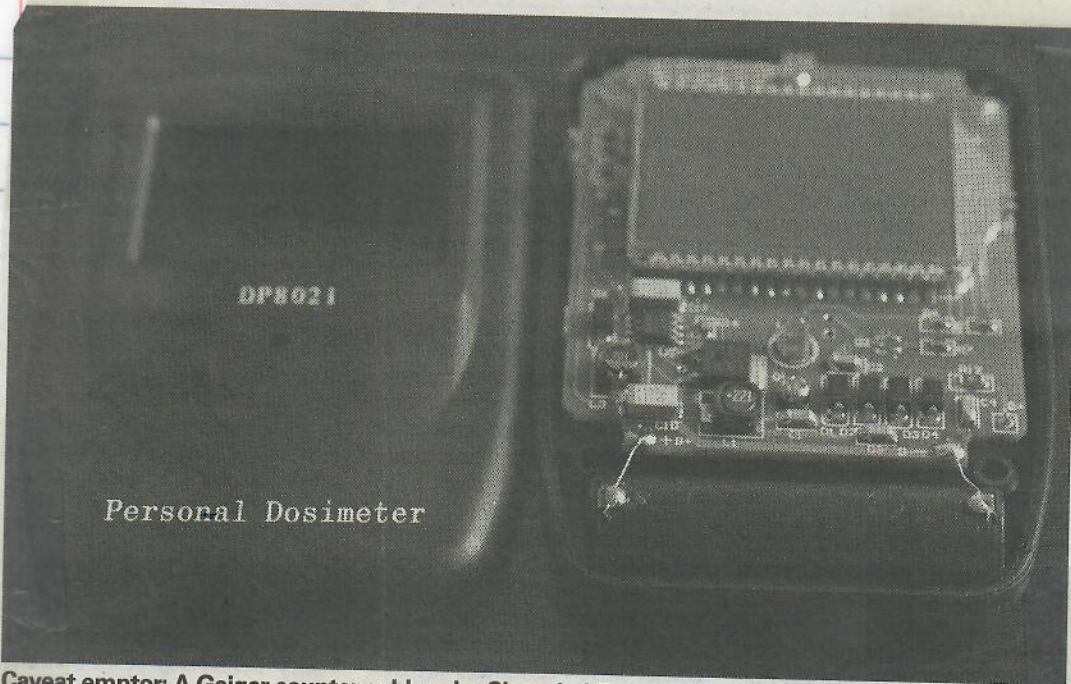
The Fukushima plant had three reactor meltdowns after the March 11 earthquake and tsunami knocked out power and backup generators. Radiation leaks displaced 160,000 people and contaminated products including spinach, mushrooms, bamboo shoots, tea, milk, plums and fish with cesium and iodine as far as 360 km from the station.

The proliferation of temporary production lines targeting Japan and South Korea led to a shortage of Geiger-Muller tubes, a gas-filled vial that detects ra-



130

# of 'illegal' Geiger



**Caveat emptor: A Geiger counter sold under Shanghai Ergonomics Detecting Instrument Co.'s DP8021 brand name is displayed Friday. In Tokyo's Akihabara electronics district, the device costs ¥65,000, twice the price in China, and that's without a box or warranty. BLOOMBERG**

diation, Huang said. The tube accounts for about 40 percent of the materials cost, he said.

SparkFun Electronics, an online marketplace for electronics enthusiasts, sells Geiger-Muller tubes for \$94 (¥7,439). A bulk order of 100 tubes fetches \$75 (¥5,935) per unit, according to the site.

Saint-Gobain Corp., a Pennsylvania-based maker of the components, has expanded capacity, moved employees and introduced longer working hours to meet the increase in orders, said spokeswoman Dina Silver Pokedoff.

The National Consumer Affairs Center of Japan has received multiple complaints related to dosimeters bought online, according to spokeswoman Michiko Izawa, who declined to name companies or the country of origin of the dosimeters.

The claims include devices that give wildly varying readings or the same readings in different locations, said Izawa. Some online stores accepted payments without shipping the product, she said.

The demand for Geiger counters and distrust of Chinese products by Japanese consum-

ers prompted Masanobu Suzuki, a 53-year-old employee of a defense contractor in Fukui Prefecture, to import Estonian-made dosimeters.

Suzuki started selling a model made by Tallinn-based Englo LLC on his website two months ago for ¥110,000. He sold 15 of the devices and said the next shipment is expected in the second half of September.

The Ministry of Education, Culture, Sports, Science and Technology has handed out 1,700 dosimeters made by Fuji Electric Co. to kindergartens, elementary and junior high schools



# counters

since April, according to ministry spokesman Hirotaku Oku.

Readings in Tokyo reached 0.809 microsievert an hour on March 15, compared with 0.0338 microsievert before the quake, the Tokyo Metropolitan Institute of Public Health said. The highest level was still below a hundredth of the radiation dose from a single chest X-ray.

The metropolitan government in March warned residents to avoid giving tap water to infants after radioactive iodine was found in the city's supply at levels twice the allowable limit for infants.

The reading dropped to within safe levels the next day.

Earlier this month, radioactive cesium-137 was found in Tokyo's tap water for the first time since April. The level was below the safety limit set by the government.

Ayako Ishikawa, faced with the option of buying a Chinese-made Geiger counter or waiting six months for models from Ukrainian and U.S. manufacturers, chose to ship soil samples from her Tokyo neighborhood's playground and park to a laboratory in France for radiation testing.

"The reputation of the Chinese Geiger counters that are still left on store shelves is not very good," said Ishikawa, a 33-year-old housewife who heads a neighborhood group demanding more radiation testing and cleanup of contaminated areas. "The Russian and Ukrainian-made dosimeters sell out in a flash."



(134)

# 4-17 JULY 2011 JAPAN GEORGE BALAZS

## MOVEMENTS AND EXPENSES

Residence

7/4/2011 Hawaii Kai POV TO AIRPORT 20 MILES  
Monday 945 AM

7/4 Depart Delta 611 1225 pm

7/5 ARRIVE NAGOYA JAPAN 410 pm

7/5 ATM WITHDRAW 50,000¥ Fee -

7/5 AIRPORT TO KANAYAMA HOTEL  
TUESDAY TRAIN 790¥

7/5 HOTEL CHECK-IN PREPAY 13 Nights ~~92,430¥~~  
6pm Room 530 (7/17 Adjustment TO 12.5 Nights 89,220¥)

7/6 Kanayama TO AQUARIUM <sup>NAGOYA</sup>  
Wednesday HOTEL Subway 2 <sup>round</sup> TRIPS (230¥ each) 920¥  
(ONE WAY)

7/7 KANAYAMA < > NAGOYA AQUARIUM 920¥  
Thursday SUBWAY 2 TRIPS

7/8 KANAYAMA < > AQUARIUM-SUBWAY 460¥  
Friday 1 ROUND TRIP



4-17 July 2011  
GEORGE BALAZS JAPAN

MOVEMENTS AND EXPENSES

7/4/11 " Hawaii to JAPAN TO AIRPORT - 20 miles  
9:45 AM

7/4 - Depart Delta 611 12:25 PM

7/5 ARRIVE NAGOYA JAPAN 11:40 PM

7/5 ATM WITHDRAWAL 59,000 ¥ Fee -

7/5 AIRPORT TO KANAYAMA HOTEL  
TRAIN 790

7/5 HOTEL CHECK IN 1st night 92.430

6:00 PM Room 5:30 (7/17 Advanture  
TO 12.5 Nights 89.220

7-13-11 →  
Central Kanayama 領上收書 79851 様

金額: 790円

名古屋鉄道 790円  
名鉄線

7/13/2011

金山 ▶ 790円  
小児 400円  
金山02001

印紙税申告納  
付につき名古屋中村  
税務署承認済

名古屋鉄道株式会社  
国際空港発行印  
01001



4-17 July  
2011

JAPAN  
MOVEMENTS and  
EXPENSES

BALANCE

7/8/2011 KAWAYAMA HOTEL ↔ Airport Round Trip TRAIN <sup>NO RECEIPTS</sup> 1580¥  
Friday

7/9 KAWAYAMA HOTEL < > Aquarium - 2 RTrips Subway 920¥  
Saturday

7/10 KAWAYAMA HOTEL < > Aquarium 1 Round Trip 460¥  
Sunday

7/11 NAGOYA (by PRIVATE CAR) TO CHOSHI City,  
MONDAY BOSO POINT

7/11-7/12/2011 1 Night HOTEL 13,800¥  
Choshi City  
(Release TURTLES OFFSHORE)  
7/12/2011

7/12 TRAIN - Choshi City 3,510¥  
Tuesday TO Tokyo

7/12 TRAIN <sup>PM</sup> - Tokyo <sup>Returns</sup> TO NAGOYA 10,780¥  
TUESDAY KAWAYAMA HOTEL

7/13/11 KAWAYAMA HOTEL 2 RTrips 920¥  
WEDNESDAY Subway TO AQUARIUM



138

お客様控

クレジットカードご利用票 / CREDIT CARD SALES SLIP

RO01  
有XX-XX

会社名・会員番号  
取引内容: 柿買上

UC-XXXXXXXXXXXX0162

支払区分: - 掛

¥10,780

商品名: (CS決済) 指定券

1枚(冊)

7月12日 のぞみ 259号 東京→名古屋 乗車券込み

私戻しはJR東日本の取扱箇所のみでいただきます。

変更や私戻しの方法等に制限があります。

この控は大切に保存してください。

23.-7.12 40655-03

東京駅@28発行

VISA

TRACK 17

乗車券・新幹線特急券 \*\*\*\*\*

乗車券 3日間有効

東京(都区内) → 名古屋(市内)

TOKYO(WARD AREA) → NAGOYACITYZONE

7月12日 (19:20発) (21:03着) C34

NO70MT 259 CAR. 5 SEAT. 8-B

10,780 内訳: 乗6,090・特4,690

券面の都区内各駅下車前迄無効

NO4490

無

RO01 40655-01

23.-7.12東京駅@28 (2-夕) 7/12/2011

中山



JAPAN  
MOVEMENTS & EXPENSES

4-17 JULY 2011 G. BALAZS

7/14/2011 Thursday Hotel RT Aquarium 460¥  
Subway

7/15 Friday Hotel TO KANAZAWA City - PRIVATE CAR  
(Offshore Turtle Release)

7/15 TRAIN - KANAZAWA BACK TO NAGOYA 7,130¥

7/16/11 SATURDAY TRAIN - NAGOYA TO KOBE  
(MEET<sup>ING</sup> WITH SEA TURTLE ASSOCIATION) 7,650¥

7/16/11 TRAIN - KOBE RETURN TO NAGOYA 7,950¥

7/17/11 Sunday Subway HOTEL Round Trip Aquarium 460¥

7/17 HOTEL KANAYAMA  
Room CHARGE Adjustment -

New TOTAL - 89,220¥

FAX charges (work related) 600¥

7/17 HOTEL TO CENTRAIR (TRAIN) 790¥

7/17 DEPART DELTA FL. 612 820 PM

7/17 ARRIVE HONOLULU 9 AM



140

TRAVEL EXPENSES

1105 YJOTFI-H

TRAIN NAGOYA TO KOBE

領取書 No 34  
窓口 No 2

駅 No 51305240

領 収 書

様

金額

¥7,650円  
消費税等込み

但し、乗車券類(クレジット扱い)として

23年 7月16日  
東海旅客鉄道株式会社

ご利用いただきましてありがとうございます

印紙税申告納  
付につき名古屋中村  
税務署承認済

金山駅

現金出納社員





4-17 July  
/2011

# JAPAN Movements & Expenses

7/17/2011 Depart AIRPORT 930AM

Sunday

POV PARKING

195. USD

NOTE: I had overlooked remembering  
the new \$15 per day AIRPORT PARKING charge (previously  
\$10 per day. If 195. EXCEEDS allowable  
I WILL ABSORB THE DIFFERENCE)

7/17

AIRPORT TO RESIDENCE

20 MILES

ARRIVE 1015 AM,



142

CARDNET

加盟店名 加賀川 加賀川 加賀川

ご利用日 2011/07/08 21:45:36

カード番号 052 681 0041 MS

伝票番号 16769

支払区分 110

端末番号 77334 510 59295

カード会社 加賀川 (101)

承認番号 061995

処理通番 245740

金額 ¥7,360

合計金額 ¥7,360

GEORGE H BALAZS CARDNET

案内

ご利用ありがとうございました

またのご来店を

お待ちしております。

\*2s773340000\*

係員

お客様控

Buffet  
7/9/2011

CARDNET

[クレジットカード売上票]  
(データギャザ専用)

加盟店名 加賀川 Family Susti

ご利用日 2011/07/08 20:42:29

カード番号 052 681 0041 MS

MASTERCARD XXXXXXXXXXXXXXX3710

伝票番号 09194

支払区分 110

端末番号 77334-510-92195

カード会社 IS3加川 (739)

承認番号 069284

処理通番 059975

金額 ¥3,610

合計金額 ¥3,610

GEORGE H BALAZS

ご案内

ご利用ありがとうございました

またのご来店を

お待ちしております。

\*2s773340000\*

係員

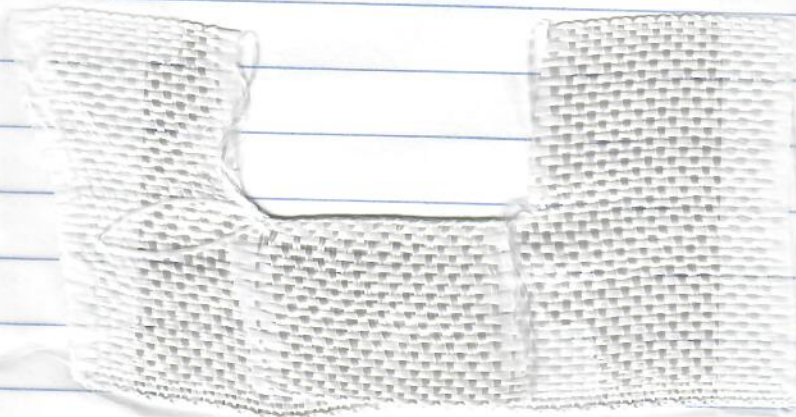
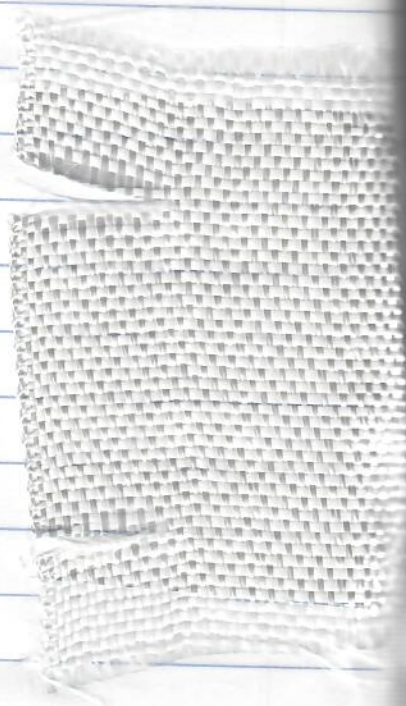
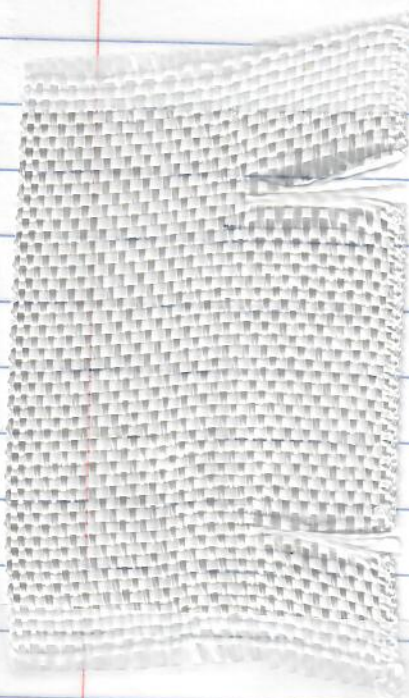
お客様控



(160)

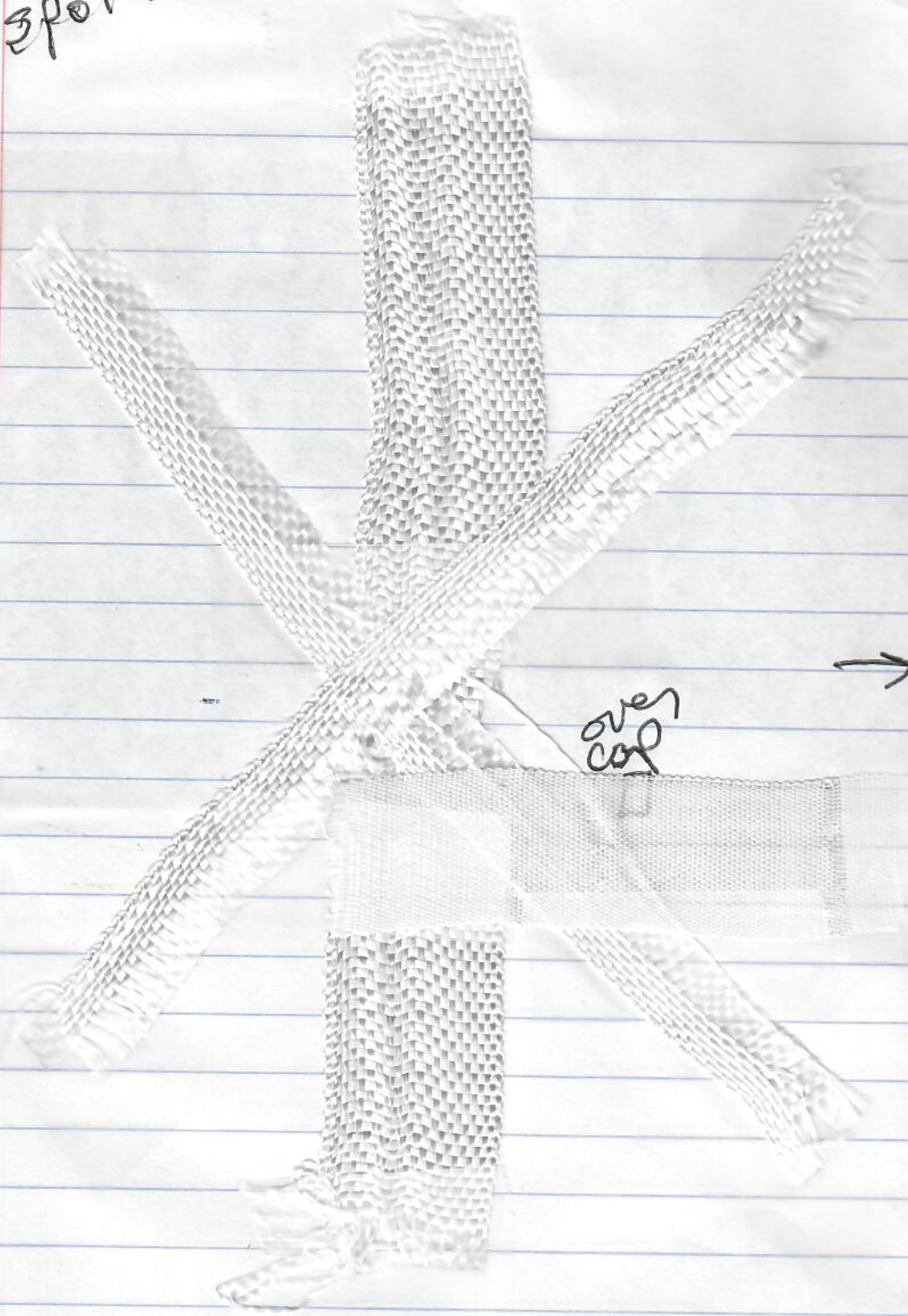
SPOT 5

↑ Head





3POT 5



→ Head

over cap







164

# アカウミガメの回遊経路は？

## 日本海に初放流へ

### 名港水族館 米と共同調査



放流するアカウミガメの甲羅に発信器を取り付ける米国の研究員＝港区の名古屋港水族館で

アカウミガメの子ガメを放流し、太平洋を回遊する経路や生態を調べている名古屋港水族館（港区港町一）は、今回初めて日本海側からカメを放流し、詳しい生息海域などを調査する。七月中旬にも、太平洋側の千葉県銚子市沖から放流する二十九匹とは別に、石川県の能登半島沖からも二十四匹を放流する。（吉田純奈）

水族館では米国・海いて今年で十回目。生 発信器をプラスチック洋大気局（NOAA）と 後六年（体長約三五）樹脂で固定し、約二年共同で二〇〇三年から 七五センチ）までの甲羅に 間の居場所を追う。カメの放流調査をして 人工衛星で追跡できる アカウミガメは、渥

## 甲羅に発信器、2年間追跡

美半島など、主に日本の太平洋側の砂浜でふ化し、成長後に産卵のため戻ってくるといわれている。発信器を使ったこれまでの調査により、子ガメは親潮と黒潮がぶつかりプランクトンが豊富な北太平洋海流に乗って生活していることが明らかになっている。

アカウミガメの産卵地の多くは太平洋側だが、能登半島などで一部報告があることから、初めて同半島沖二十キロ地点から放流することになった。両海で育つカメがたどる経路の違いなどを明らかにするのが狙いだ。

同館のウミガメの飼育担当・斉藤知己さんは「アカウミガメの生息海域を突き止めることで、絶滅の危機にひんするカメの保護区をつくることができ」と期待を込める。



APRIL 2010 DRY BOX





WELCOME TO UKAI,



鵜飼



May 11 ~ October 15

CORMORANT FISHING ON THE NAGARA RIVER





APRIL 2010

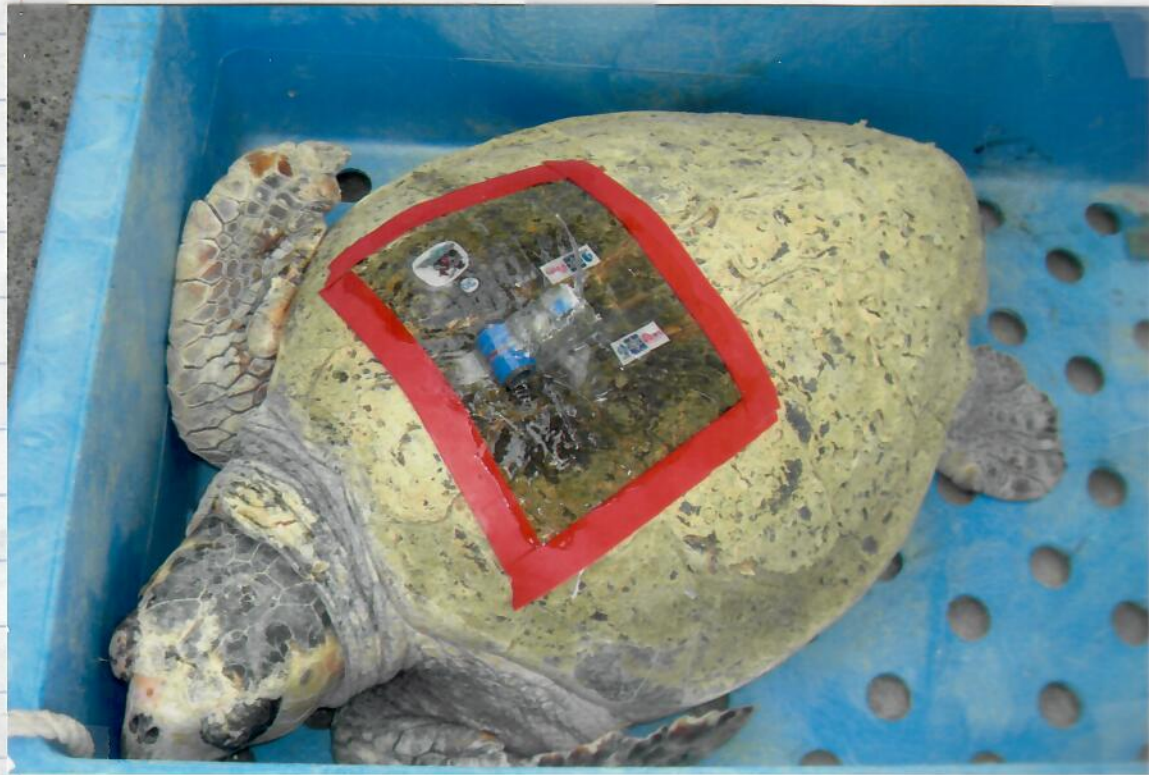


24



APRIL 2010





20 years  
PNPA ♀





APRIL 2010



171



APRIL 2010



APRIL  
2010





April 2010 GPR/GOP

51

April  
2010





APRIL 2010 GAMAGORI

081



APRIL 2010





ew  
Aictti  
NARU

GAMAGORI  
APRIL 2010

Release of Yakushima



# Farm ships 42 cows fed irradiated straw

7/16/2011 The JAPAN TIMES

## Another town in Fukushima has tainted beef

**Fukushima**  
KYODO

The Fukushima Prefectural Government said a farm in the town of Asakawa shipped 42 cows to Tokyo and other places after feeding them straw containing high levels of radioactive cesium, and the Tokyo Metropolitan Government said Friday it found a high level of cesium in beef produced from some of the cattle.

Miyagi Prefecture said Friday it found 3,600 becquerels of cesium per kilogram in straw checks at three places in the prefecture. Following the discovery, the prefecture ordered about 900 farms in the prefecture not to feed their cows straw harvested after March 11.

The 42 cows from Asakawa were shipped between April 8 and July 6: 14 were taken to Yokohama, 13 to Tokyo, 10 to Sendai and five to Chiba Prefecture, the Fukushima government said.

The straw was found to contain up to 97,000 becquerels of cesium per kilogram, about 73 times the government limit. It was cut last year by a rice farm in Shirakawa, Fukushima Pre-

fecture, and was left in an open field.

Following Fukushima's announcement, the Tokyo Metropolitan Government said beef from the farm contained about 3,600 becquerels of cesium per kilogram, far exceeding the government limit of 650 becquerels per kilogram.

The beef has been held at dealers in Tokyo, and it has not reached consumers, according to the metropolitan government said.

The farm collected and sold the straw after the Fukushima No. 1 nuclear power station was critically damaged March 11 and began leaking radiation, according to the prefectural government.



Prefectural officials inspected the cattle farm and asked it to stop shipping or transferring cows.

It made the same request to other cattle farms and related parties in the prefecture until all farms can be inspected, which could be completed by Monday.

The Health, Labor and Welfare Ministry asked the Tokyo, Yokohama and Sendai governments on Thursday to trace the cows shipped from the farm.

Beef produced from the cows shipped to Chiba made it to market, ministry officials said.

According to the Sendai Municipal Government, two of the 10 cows shipped there have been processed into beef and delivered to dealers in Tokyo; Sakata, Yamagata Prefecture; Hanamaki, Iwate Prefecture; and Sendai.

Where the beef from the eight other cows ended up had yet to be determined, the municipal government said.

Five cows shipped to Chiba were butchered May 11 and the meat sent to Tokyo, while 14 cows shipped to Yokohama were processed and the beef shipped to eight dealers in Tokyo and Kanagawa Prefecture.

A cattle farm in Minamisoma, also in Fukushima, was earlier found to have fed cows with straw containing 75,000 becquerels of cesium per kilogram.

The Agriculture, Forestry and Fisheries Ministry said Thursday it will examine straw stored at cattle and rice farms in Iwate, Miyagi, Fukushima, Tochigi, Ibaraki, Chiba, Gunma and Saitama prefectures.





# Tainted beef sold in at least 13 prefs

The Yomiuri Shimbun

A total of 1,200 kilograms of radioactive cesium-contaminated beef has been sold to consumers in at least 13 prefectures, The Yomiuri Shimbun learned Saturday.

The beef came from 42 cows shipped by a livestock farmer in Asakawamachi, Fukushima Prefecture, who fed the cattle with rice straw contaminated with high levels of radioactive cesium.

Although sales have been confirmed in only 13 prefectures, the meat has been distributed to Tokyo and at least 27 prefectures, the respective governments of which are investigating the wholesale and retail channels.

The local governments will collect frozen beef currently being stored by merchants, and have research institutes conduct tests to determine whether the meat contains ra-

dioactive materials.

At least 1,200 kilograms of the cesium-tainted beef has been sold in supermarkets and butcher shops in Aichi, Akita, Ehime, Gifu, Gunma, Ibaraki, Ishikawa, Kagawa, Kanagawa, Kyoto, Nagano, Saitama and Shizuoka prefectures, according to the local governments concerned.

The local governments of Tokyo and the 27 prefectures where the beef in question has been distributed have asked merchants to ensure it does not reach store shelves.

## Cattle shipments to be curbed

Kyodo News

The government's nuclear disaster task force is set to suspend shipments of beef cattle from Fukushima Prefecture amid concern that beef from the region may be contaminated with radioactive cesium, according to government sources.

The Fukushima prefectural government has begun inspecting all beef cattle farms in the prefecture and has asked the farms to refrain from shipping cows until Monday, when the inspections are to be concluded.

The central government will make a decision regarding beef cattle shipments from Fukushima after consulting with prefectural authorities, the sources said.

Concern over tainted meat reaching markets was heightened Friday by a Tokyo metropolitan government and Yamagata prefectural government announcement that radioactive cesium at levels exceeding the legal limit had been found in beef from cattle shipped from a farm in Asakawa, Fukushima Prefecture, to a slaughterhouse in Sendai.

■ Tokyo, 10 prefectures start questioning cattle farm owners. **Page 2**

## WEATHER

TOKYO



Fair,  
occasionally  
cloudy

OSAKA



Fair,  
occasionally  
cloudy

NIIGATA



Fair

FUKUOKA



Fair,  
later cloudy

Web: [www.yomiuri.co.jp/dy/](http://www.yomiuri.co.jp/dy/)

Twitter: [twitter.com/DailyYomiuri](https://twitter.com/DailyYomiuri)

E-mail: [dy@yomiuri.com](mailto:dy@yomiuri.com)

Customer service: [delivery@yomiuri.com](mailto:delivery@yomiuri.com)

881



New  
for  
2011!



**MERRELL**

Merrell Pace Glove  
Sizes 5-11 W Item 12581D \$100



**Jambu**  
ADVENTURE DESIGNS

Jambu JBU404-Water Ready  
Sizes 6-11 W Item 12318D \$99



## Benefits Of Barefoot

Introducing a movement that is changing the way we think about our feet and our overall body function. Barefoot style footwear boosts proprioception, which is the feedback that travels from your feet to your brain. The more proprioception it receives, the more efficiently your brain's signals can move your body. Super lightweight and flexible, **barefoot footwear** gives all the benefits of being barefoot, with the protection of normal shoes. Brands like **Merrell, Kigo, Jambu, and VIVOBAREFOOT** have created collections that work with the body, not against it. Get back to the basics. Run and walk naturally using the technology you were born with. Visit [Skymall.com](http://Skymall.com) and search **Planetshoes!**

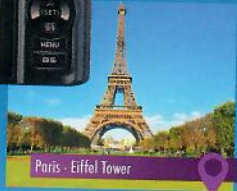


90

# WIDE RANGE OF FUNCTIONS USEFUL FOR TRAVELING



Displays your current location and nearby landmarks



Automatically add names of places and structures you photograph

Images with location can be transferred to a computer for detailed viewing and for sharing online with friends and family



Preset with info on 10,000 sites to alert you to nearby points of interest



**EX-H20GD**  
(\$349.99)

14  
MEGAPIXEL

3.0"  
SUPER CLEAR  
LCD

AUTO  
FACE  
DETECTION

10X  
ZOOM

CCD  
IMAGE  
STABILIZER

720p  
HD VIDEO

MULTI  
CPUs

BATTERY  
LONG-LIFE  
RECHARGEABLE

MAKES A  
Great  
Gift

GPS

CASIO

1-800-SkyMall (1-800-759-6255)

www.SkyMall.com