



TALOFA AIRWAYS



FLY TALOFA AIRWAYS RIDE LIKE THE WIND

Samoa's newest inter-island airline operating two Twin Commander 690B, 9-seater aircraft. Comfortable, roomy, air-conditioned cabins with great visibility for your enjoyment.

Take a flight to Pago Pago for the day, just across the water

Book a scenic flight over beautiful Samoa

Enquire about our charter flights to any Pacific island

Book a flight and visit the Kingdom of Tonga

"Best little airline in the South Pacific"

Ticket sales at Talofa Airways office in Vaea Street, Apia (next to Maria's Pharmacy) from 8.00am to 4.30pm. Also at Fagali'i Airport Terminal, Faleolo Airport Terminal and Tafuna Airport Terminal in Pago Pago.

APIA MAIN OFFICE (685) 30-005 / 30-006

FAGALI'I (685) 30-007 TAFUNA (684) 699-3002

e: enquiries@talofaairways.com facebook: Talofa Airways

www.talofaairways.com

Samoa

and American Samoa

Today & Tonight 2017-18

FREE



PACIFIC
TRAVEL
MEDIA

Advertising enquiries to:
info@samoapacific.com



www.samoapacific.com

BLUE PACIFIC CAR HIRE SAMOA'S TOP FLEET

Explore and enjoy - Samoa - the Heart of Polynesia, a sightseer's paradise. Blue Pacific Care Hire has a fleet of snappy colourful and comfortable vehicles for you to see the wonderful sights of beautiful Samoa. Efficient service, free delivery to hotels, budget rates for short and long term hire and comprehensive insurance.



ONE DAY FREE
with 7 day
booking

FREE pick-up and
delivery to all hotels
in the town area

FREE GIFT PACK
with 3 days
minimum hire

Free call within Samoa 0800 BLU (258)
Open Mon - Sun 8.00am - 4.30pm
For an exciting Samoa adventure, choose Blue Pacific Car Hire
Mobile: (685) 7722668, (685) 7770269
P.O. Box 3043, Apia, Samoa. Ph: (685) 22668 Fax: (685) 24447
Email: sales@bluepacific.ws Web: www.bluepacific.ws



Arriving & Departing

The first 'welcome to Samoa' comes when one exits the aircraft and feels the warm tropical air, especially when coming from the middle of winter

Processing through Customs & Agriculture is straight-forward and efficient. There is a line for International Passport holders and a line for Samoan Passport holders and there is often a live Polynesian string band to welcome visitors

Money can be exchanged from ATM's and Banks, both Westpac & ANZ are at the airport and if you have time, it is a good opportunity to pick up a SIM card and get on the local network. Often it is cheaper to do this at the airport than in town and it is much cheaper than global roaming, but do shop between the network providers.

Smartphones work fine in Samoa and coverage is good

The Samoa Tourism Authority has a Visitor Information Centre at the airport and the team are most helpful with advice and assistance and they can make bookings for visitors

If you are not picking up a rental car at the airport and your transport has not been pre-arranged there are taxis and shuttles; enquire & agree on the fare before accepting. It is 35km to Apia. If you arrive before 5.00pm you may be able to catch the local bus at the airport gate

If you are picking up a rental car at the airport, your licence must be validated, and most of the rental car operators can do this. Driving is on the left and many streets don't have signs but if you know the village location then you can find your destination



If you are travelling straight on to Savai'i, the ferry terminal at Mulifanua Wharf is not far from the airport. The trip across to Savai'i takes about 1 ½ hours. If you have not booked your sailing to Savai'i, the Samoa Shipping booking office is on Beach Road Apia, before the marina

Domestic flights and flights to Pago leave from Fagali'i Airport which is located 5 minutes out of Apia

If you are in Samoa to do business Government offices and shops usually open from 9.00am-5.00pm and Saturday shopping hours are from 8.00am-12.30pm

Six of the most important words worth remembering are:

- Talofa - Hello
- Malo - Hi
- Fa'amolemole - Please
- Fa'afetai - Thank you
- Tofa or Fa - Goodbye
- Soifua - Long may you live

When you are back at the airport heading home there are cafes that serve quality food both in the terminal and airside, and there are duty free shops. There is no departure tax

TRANSIT MOTEL

Clean and comfortable, budget-priced accommodation close to Faleolo International Airport

Convenient for passengers arriving late, early morning or in transit.

Variety of accommodation from backpacker to family rooms, some with aircon and ensuites, others with fan, shared bathroom and kitchenette. Advise your requirement when booking.

Shuttle service available.



**Phone (685) 45008
or (684) 688 7922**

transitmotel Samoa45008@gmail.com





Apia

With a population of around 37,000 Apia is a vibrant, busy town, now comprised of some 45 villages built around the original village

Mt Vaea, resting place of the author Robert Louis Stevenson rises to the south, and the north is fringed by a natural harbour

The whole of the waterfront from Vaiala Beach along to the marina at Apia wharf on Beach Road, through town and along Mulinu'u Road up to the observatory is ideal for strolling or jogging. There are numerous historical attractions around Mulinu'u, the old ceremonial capital, as well as the location of Parliament House. Palolo Deep is a marine reserve between Apia Harbour and Vaiala Beach offering excellent snorkelling and swimming

The Visitor Information Centre is opposite the Catholic Cathedral on Beach Road, the Public Library is by the town clock and there is an excellent Museum on Vaitele Street at Malifa

In the last couple of years the café scene has really taken off in Apia, and both

visitors and locals are treated to a high standard of food and coffee

Shopping for clothing, jewellery & craftwork can be especially rewarding in terms of quality and price so it is worth spending some time in these shops and talking with the shop assistants

The three largest supermarkets are in town and they stock goods sourced mainly from New Zealand and Australia including many popular brands

Fresh fruit & produce and cooked food is available at the re-developed food market on Fugalei Street. The produce available here is truly organic, fresh daily and very reasonably priced. Fresh fish & seafood can be bought from the Fish Market on the waterfront

If you are driving in Apia, there are traffic lights, and it is OK to turn left on a red light if the way is clear and traffic permits

Keep an eye on the footpaths, some are a little bit cracked & bumpy and take care especially if it rains

If Apia is your base and you want to go to different parts of Upolu, taxis are plentiful and most drivers are very happy to be your chauffeur for however long you like, and they will take you wherever you like on the island. Taxi fares are very reasonable but you should ask and agree on a price first before accepting the service

Buses are very cheap, very well patronised and they are a fun experience. There are no bus stops in Samoa, simply wave the busses down as they approach and pay as you are getting off. In Apia you can catch the bus from either the main bus depot by the Fish and the Flea Market (on the oceanfront side) or at the Main Bus Stop by the Food Market on the corner of Fugalei & Saleufi Streets; both these locations are very

easy to walk to. All the buses are named with their destination, just ask the driver if you need assistance

Apart from the fish market which is open from 5.30am-8.00am, Apia, and Samoa is quiet on Sunday because it is a day of worship, rest, family & feasting

There is a lot of practise & effort that goes into the church choirs in Samoa, and musically the results are quite outstanding; these choirs are some of the finest in the world

It is a wonderful experience to visit a church of any denomination on Sunday to hear these choirs sing. Visitors are very welcome and it is a great opportunity to chat with the locals after service



TRAVELLERS POINT

Hotel Samoa

Enjoy a private and relaxing atmosphere in the heart of Apia

ROOMS



RESTAURANT



EVENTS



A boutique hotel centrally located in Apia with convenient access to local amenities and tourist attractions.

Our Calliope Restaurant & Bar serves a variety of international cuisine with local flavours. Live band and shows every week.

1 Vaitele Street, Malifa, Apia | stay@travellerspointhotel.com
Tel: +685 33001 or 33002 | www.travellerspointhotel.com



LUCIA'S CATERING

World Famous in Tacoma, Washington State

We are a full service catering company based in Apia catering for office parties, luncheons, breakfast, weddings, private parties & gatherings. No occasion is too small or too big.

PHONE (685) 750 6956
LUCIASCATERING.CO@GMAIL.COM
WWW.LUCIASCATERING.COM



Whether it is tasty crafted club sandwiches for a small gathering or a sumptuous pig on a spit for a large wedding, our chefs source the finest local produce and ingredients and prepare daily baked goods, serving straight from our ovens fresh to your table. Contact us to discuss varying options to suit your taste and budget.



CHAN MOW SUPERMARKET

VAEA STREET, APIA
MON-SAT: 7AM - 8PM
SUN: 6AM - 9AM
PHONE (685) 22 616
chanmowsupermarket@gmail.com



BROAD RANGE OF FRESH AND OVERSEAS PRODUCE

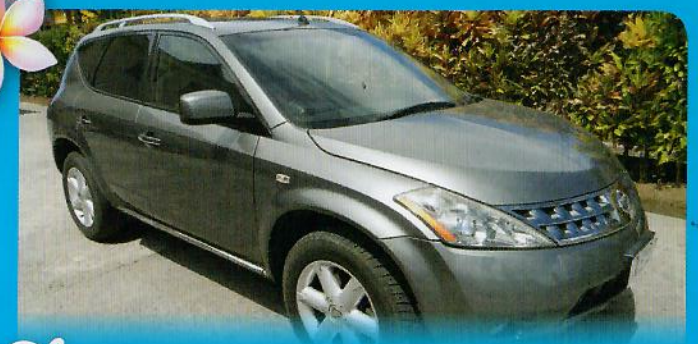
BAKERY, BUTCHERY AND DAIRY SECTIONS

DEPARTMENT STORE SELLING CLOTHING, FABRICS, TOYS, SHOES, HOMEWARE & KITCHENWARE



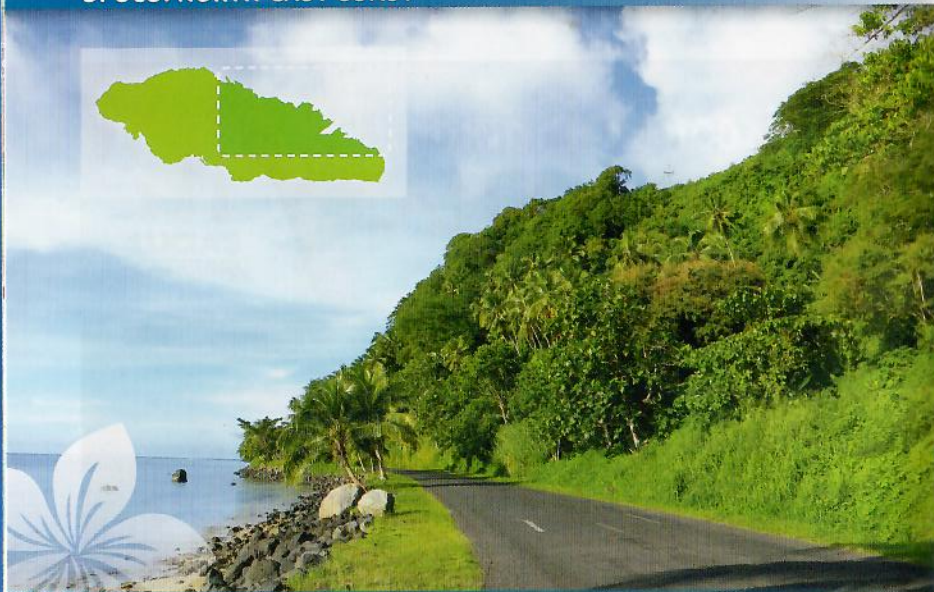
Discover Samoa
SAMOANA
RENTAL CARS

- Large fleet of modern vehicles to choose from
- Clean, reliable and comfortable
- 24hr breakdown service
- Special rates for short & long term hire
- Free airport delivery for rentals of 7-days and over
- Free delivery to all hotels in town area
- Open 7 days a week from 8.00am to 5.00pm



Phone + 685 28460

sales@samoana.ws | www.samoana.ws



Upolu: North-East Coast

This scenic route starts right at the doorstep of Apia

A magnificent coastal drive, quieter and more peaceful than the other major roads on the island, passing beaches suitable for swimming & surfing with towering mountains covered with tropical rainforest. The road passes through colourful seaside villages teeming with life where Samoan families live openly, giving the traveller a chance to view Samoan life a little closer

After about a 30 minute drive you will reach the famous Piula Cave Pool & Theological College, a great spot for a cool off. There are bathrooms and a changing area. And if you are lucky, you might catch the students at a game of Kirikiti (or Samoan Cricket)

Once reaching the village of Falefa, where the Falefa Falls meet the ocean,

the road turns inland and heads up over Le Mafa Pass affording a spectacular view back to the Coast

Fagaloa Bay is located on the north eastern coast. The area is a significant region of conservation and culture. The geographic area consists of a mountain formation rising out of the sea. At the base of the bay lies the village of Ta'elefaga at the mouth of the Malata river. To the east above the villages of Lona and Uafato are several waterfalls by mountain forests. On the western side is Mount Fao with spurs dissolving seaward into cliffs called Utulooa. Further east lies Uafato Bay at the eastern base of the Malata river which displays spectacular landscape of lush rainforest and waterfalls

The distinctive features of the Fagaloa area portrays some of the most interesting myths and legends in Samoan

Photo ©Tracey Saxby

mythology which are considered invaluable and relevant to the peoples' cultural lifestyle

The Uafato Conservation Area includes native forests and bird life earmarked for Unesco's world heritage protection. This site was added to the UNESCO World Heritage Tentative List on December 21, 2006 in the Mixed (Cultural + Natural) category

The bird species of Samoa include a total of 82 species, of which 10 are endemic, five have been introduced by humans, and 23 are rare or accidental. Seven species are globally threatened



Photo ©Sean Condon/Samoa Tourism



Photo ©Sean Condon/Samoa Tourism

Photo ©Sean Condon/Samoa Tourism

Photo ©Sean Condon/Samoa Tourism

Photo ©Sean Condon/Samoa Tourism

Photo ©Sean Condon/Samoa Tourism

Photo ©Sean Condon/Samoa Tourism

Photo ©Sean Condon/Samoa Tourism

Photo ©Sean Condon/Samoa Tourism

Photo ©Sean Condon/Samoa Tourism

Photo ©Sean Condon/Samoa Tourism

Photo ©Sean Condon/Samoa Tourism

Photo ©Sean Condon/Samoa Tourism

Photo ©Sean Condon/Samoa Tourism

Photo ©Sean Condon/Samoa Tourism

Photo ©Sean Condon/Samoa Tourism

Photo ©Sean Condon/Samoa Tourism

Photo ©Sean Condon/Samoa Tourism

Photo ©Sean Condon/Samoa Tourism

Photo ©Sean Condon/Samoa Tourism

Photo ©Sean Condon/Samoa Tourism

Photo ©Sean Condon/Samoa Tourism

Photo ©Sean Condon/Samoa Tourism

Photo ©Sean Condon/Samoa Tourism

Photo ©Sean Condon/Samoa Tourism

Photo ©Sean Condon/Samoa Tourism

Photo ©Sean Condon/Samoa Tourism

Photo ©Sean Condon/Samoa Tourism

Photo ©Sean Condon/Samoa Tourism

Photo ©Sean Condon/Samoa Tourism

Photo ©Sean Condon/Samoa Tourism

Photo ©Sean Condon/Samoa Tourism

Photo ©Sean Condon/Samoa Tourism

Photo ©Sean Condon/Samoa Tourism

Photo ©Sean Condon/Samoa Tourism

Photo ©Sean Condon/Samoa Tourism

Photo ©Sean Condon/Samoa Tourism

Horizon Surf Shop

Samoa's only authorised licenced dealer for Quiksilver, Roxy, DC, Billabong, Rip Curl, Oakley and Havaiana



A great selection of clothing, footwear, sunnies, caps and watches at very reasonable prices

Phone (685) 31366
Vaea Street, Apia E: horizonsurf.samoa@gmail.com



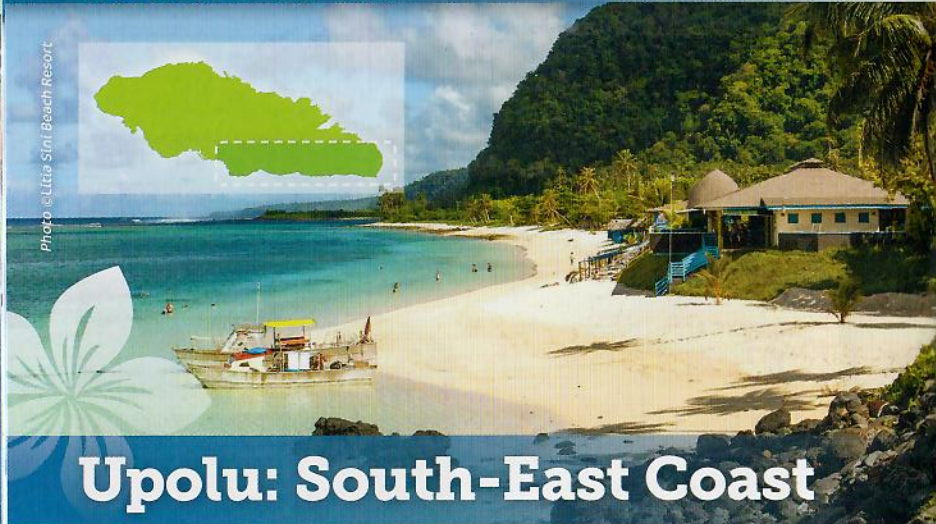


Photo © Little Sini Beach Resort

Upolu: South-East Coast

One of the most popular areas with visitors because of the legendary white sandy beaches and scenery, the South-East Coast of Upolu is well provisioned in terms of accommodation for travellers on any budget from basic fale to upmarket resorts

The most direct access is by turning on to Falealili Street off Beach Road in Apia. This is Cross Island Road, a scenic drive that rises up through the village of Vailima, past the turnoff to the tomb of the great Robert Louis Stevenson, then onto the Baha'i Temple at Taipapata with 22 acres of beautiful tropical gardens open to the public free of charge; a gift to all humanity

Continue further up to one of the highest points on this massive volcanic island. The views are spectacular on both sides of the island and there is a viewing platform of the beautiful Papapapaiuta Waterfall. Follow the road down to the bottom at Si'umu and turn left to the East Coast

This is a fun coast to explore, especially with a group. Most of the resorts and

fales have restaurants and bars geared for the casual visitor and there is a broad range of accommodation

If you are not overnighing then plan a whole day for this trip as there is a lot to explore and many stops are likely, but it is a must to drive to the very eastern tip of the island

At Lotofaga Village is the mighty To Sua Ocean Trench (translated as 'big hole'), a 30 metre deep hole in the ground with seawater at the bottom, accessed by an almost vertical wooden ladder

Samoa does not have a 'Queens Chain' or public beaches but rather, all beaches form part of a village and are village property. There is very little privately owned land on Samoa. You should always ask permission at the nearest village as you may have to pay a small entry fee, so keep some change handy. It is not polite to argue the point

The alternate route to the South-East Coast is by taking the North-East Road from Apia, over Richardson Road or Le Mafa Pass Road

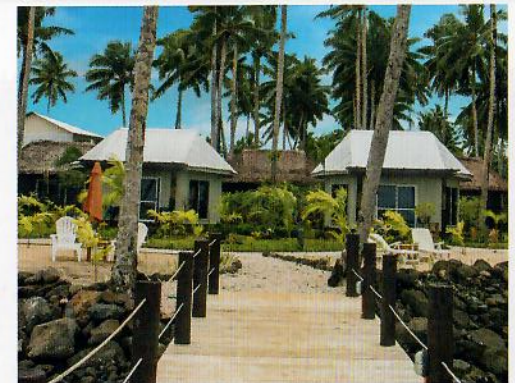


Saletoga Sands Resort & Spa combines luxury and comfort with the natural splendour of the beautiful island of Upolu, Samoa.



SALETOGA SANDS
RESORT & SPA

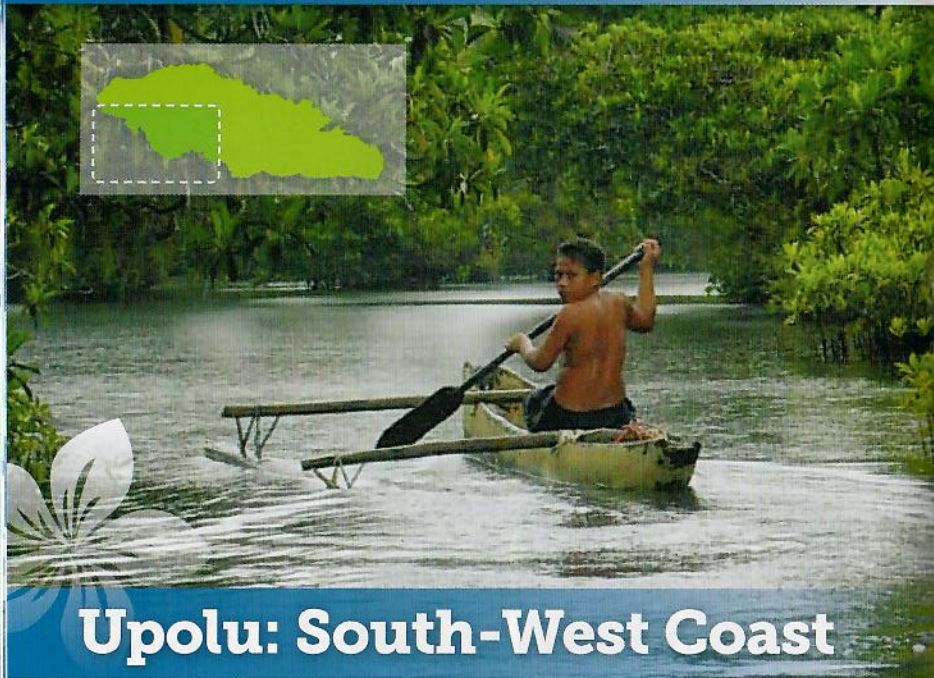
Exceptional value accommodation offering unique facilities for stays on Upolu's South Coast of Beautiful Samoa.



SALETOGA BEACH
BUNGALOWS & HOTEL



South Coast Road, Matatufu, Upolu
+ 685 41212 or 844 1212 | reservations@saletogasands.com
www.saletogasands.com



Upolu: South-West Coast

Possibly the best kept secret in Samoa, the South West Coast of Upolu from Si'umu to Mulifanua has some of the best surfing in the South Pacific as well as quieter secluded areas with natural & historic attractions along the way

There is plenty of accommodation from smart resorts, most with restaurants catering for the casual diner to fales on the beach

Aside from the swim & surf beaches the area is full of interesting places including the Satoa and Sa'anapu Conservation Area which is accessible from either of the villages. Both villages have an information fale where you can pay an admission charge to visit the mangroves on foot (at low tide only) or pay a fee for an outrigger canoe tour (best at high tide)

You will see two types of mangrove here, the red mangrove with stilt roots and the oriental mangrove with buttress roots of knee-like extensions. Birds include the grey duck and the reef heron. The villagers practise aquaculture and crab harvesting

Return to Paradise Beach was named after the 1953 movie starring Gary Cooper and written by James Michener which was filmed on location. This is a popular picnic spot with the locals on Saturdays

The coastal village of Savaia on the southern shores of Lefaga Bay is the site of the giant clam conservatory and visitors can swim in the lagoon and see these mythical creatures about 50 metres offshore in the shallow waters. The water can be cold on the top and hot on the bottom because of a natural spring flowing out from the lava rocks

The village of Falelatai is known for its beautifully kept and highly colourful gardens, winning the National Beautification Competition in 2010

One can head back to Apia either via Mulifanua and the coastal road, an area is steeped in natural history with the discovery in 1963 of Lapita pottery remains which carbon date back to 930-800BC

Or one can head back to Apia via Cross Island Road, climbing up to Mt Tafua and across Alafa'alava Road glimpsing the coast through tropical rainforest and plantations some of which date back to German administration in Samoa from the late 1800s



Photo ©Le Vajasi's Beach Fales



roko's
RESTAURANT
MOTO'OTUA

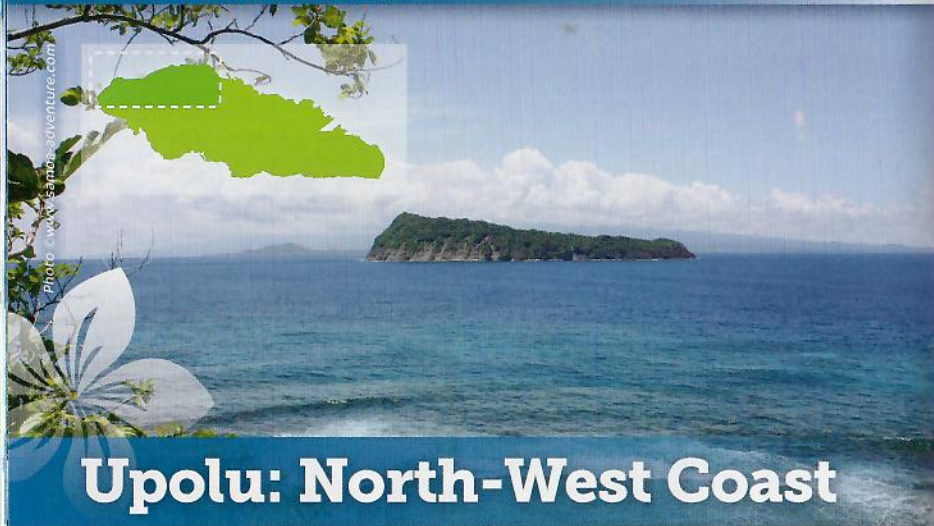
Most Innovative & Skilled
2016 Restaurant Challenge

Reigning Overall Champion
2015 & 2016 Oka Fest

Official Caterer
Commonwealth Youth Games



Phone: 20992
Email: rokosrestaurant@gmail.com | Ififi Street, Moto'otua



Upolu: North-West Coast

The North West Coast of Upolu from Apia to Falelolo Airport is the most densely populated area of Upolu, bustling with village life, schools and the magnificent architecture of Samoan churches

Once past the airport the villages give way to the tranquil countryside briefly before reaching the coast at Mulifanua from where the ferry departs for Savai'i and smaller boats leave for Manono

The coast is beautiful and if you do not have the opportunity to visit Savai'i, Manono or Apolima, then a trip out this way is a must do as the views out to these islands shows 'the Islands of Samoa' and will have you coming back for another visit

Around AD 950, warriors from Tonga established their rule on Savai'i, and then moved on to 'Upolu. Around the year AD 1250, under the leadership of Tuna, Fata and Ulumasui the Samoans defeated the Tongans and drove them to the west end of Upolu. Seeing there was no hope, the enemy decided to leave Samoa. Tui-Tonga (the Tongan king) rose up and

stood upon the sea-rock that is beyond the Fatusofia (the name of the rock is Tulatala), and called out:

*Ua malie toa, malie tau
Ou te le toe sau
I le auliuli tau,
A o le a ou sau
I le auliuli folau*

"Malietoa! (beautiful warrior), splendid war! I will not come again with a war party; but should I come to Samoa with a travelling party, that will not be to raise a war against Samoa. This is our covenant (*mavaega*)."
A favourable response was given to the covenant at Tulatala

From the first words "malie toa" originates the name Malietoa, which later became one of the principal titles of dignity. It is said that Tuna and Fata immediately started wrangling over the name and that both were so grievously wounded that they died. Through the intercession of Ulumasui the gods restored them to life. Both now renounced the title in favour of their sister's son. In the district of Tuamasaga it is claimed that Savea, a brother of Tuna and Fata, was the first Malietoa, the first chief to rule supremely over Samoa



frankieonlineshop@gmail.com



Frankie Supermarket Locations:

**Frankie Lotopa,
Frankie Matautu &
Frankie Mall in Apia**
Mon-Sat: 6am to 9pm,
Sun: 6am to 10am &
4pm to 9pm
Phone 24495,
32068 & 22925

**Frankie Hypermarket
at Vaitele**
Mon-Sat: 6am to 10pm,
Sun: 6am to 10am &
4pm to 10pm
Phone 22708

Frankie Savaii
Mon-Sat:
6.30am to 5pm,
Sun: 6am to 8am
Phone 51151



Hungry Franks Restaurant

"Hungry people's best friend."

WE HAVE:



LOTOPA 728 8969 FRANKIE MALL 22726
FRANKIE HYPERMARKET 22708 SAVAI'I 771 5595

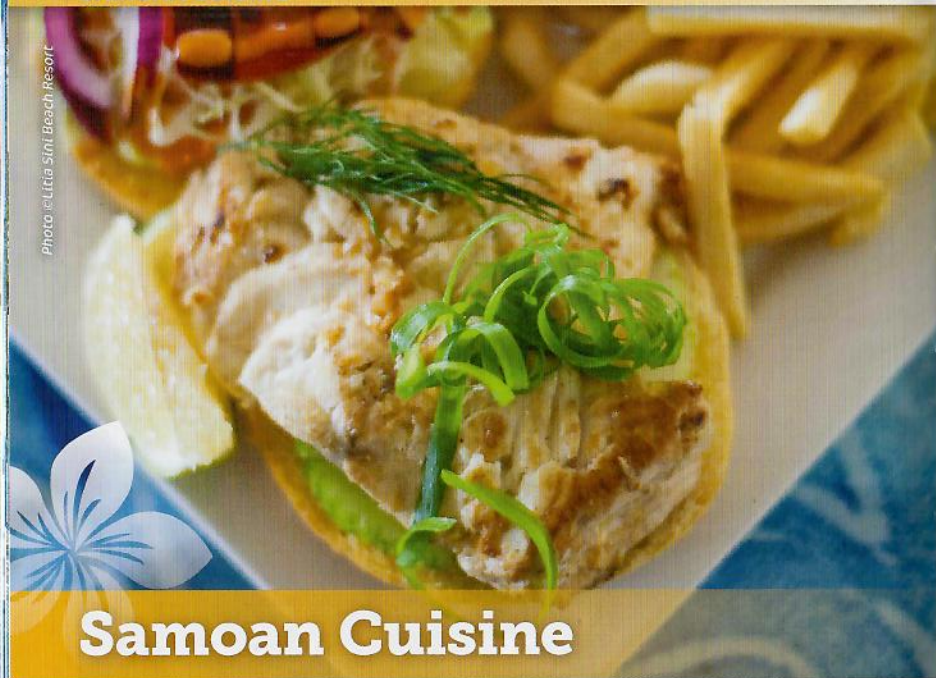


Photo © Lilia Sini Beach Resort

Samoan Cuisine

Pacific produce is 'en vogue' at the moment around the world, with products like coconut oil, koko Samoa and coconut water becoming very popular amongst both the culinary and the cosmetic industry

Samoan food is an expression of our culture, the raw relationship with our fertile volcanic soil and the deep blue sea is what makes our beautiful nation and people unique

In Samoa, most of our farmers are organic by default, it is our tradition to work the land and benefit from it's offerings

After the unfortunate invasion of turkey tails and the oh so beloved canned corned beef, Samoa is now realising that our food is not only wholesome,

cheaper and readily available compared to imported produce, but most importantly it is who we are

Samoan chefs are on a mission to re-discover our genuine pacific cuisine and present it to the world with pride, after all we might be a small nation, but we are certainly blessed with abundance of fresh organic produce, in fact there are 700 organic family farms in Samoa

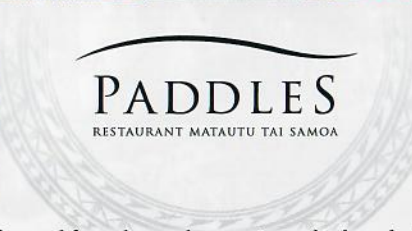
The aim of our game is sustainable agriculture and sustainable tourism, with the food industry on the front line!

Whenever in the neighbourhood, take time to indulge in Samoan Pacific cuisine. You will not be disappointed!

ARTICLE BY: **Dora Rossi**
Milani Caffè/Paddles Restaurant



OUTSTANDING FOOD & SERVICE



Italian cuisines influenced from the northern regions of Italy and selected local favorites from Samoa make Paddles Restaurant a must-visit while on the island

OPENING HOURS: MON-SAT 5.00PM UNTIL LATE

Beach Road, Matautu Tai, Apia. Phone (685) 21819.



MILANI CAFFÈ

GOLD STAR BUILDING, APIA

Delicious breakfast and lunch served with a touch of Italian love

Real Italian coffee, freshly baked croissants, salads, pastas, sandwiches, cakes, muffins, slices, and more...



PHONE
(685) 20584





Photo © Sean Condon/Samoa Tourism

Staying Healthy in Samoa

Samoa has a range of healthcare services available if you do have the unfortunate experience of getting sick while visiting our shores

There are 2 main hospitals – one in Upolu (Moto’otua) and the other in Savai’i (Tuasivi). These are supported by smaller District hospitals around both islands.



Photo ©www.samoa-adventure.com

There are also numerous private medical clinics which are mainly situated in the capital of Apia and two in Salelologa and Sapapali’i, Savai’i

Most clinics and pharmacies open during normal business hours and a few that are open after hours. Some private doctors do offer house-call services and these are best arranged through your hotel reception. There are 6 pharmacies within the capital Apia and a hospital pharmacy in Moto’otua Hospital and Tuasivi Hospital

Services such as physiotherapists and dentists are available at the hospital as well as privately owned clinics mainly situated in Apia

ARTICLE BY: **Zhenna Chan Mow**
Niu Pharmacy



A wide variety of prescriptions and medications

Check out our wide range of

- toiletries • babycare • skincare • insect repellents
- sunscreens • haircare • vitamins • cosmetics



PHARMACY

Saleufi Mall, Vaea Street, Apia
Phone (685) 22 420
Fax (685) 21138
Email niupharmacy@gmail.com

For a new and healthier you!

OPEN

Mon to Thur 8.30am-8pm
Fri 8.30am-6pm
Sat 8.30am-2pm
Sunday 6pm-8pm

Krush Juice Lounge
TANUGAMANONO
smoothies fresh juices vegan food
OPEN MON - SAT
PHONE: 27874



Samoa Massage

Traditional healing in Samoa involved the application of herbs, spells, calling upon the Gods and traditional massage known as 'Foho'

Samoa 'Foho' has a wide range of techniques starting from a gentle rub 'mili mili', to kneading 'lomi lomi', slapping or pounding - 'tu'i tu'i', to massaging with the balls of the feet while standing/walking - 'soli'



A Touch of Samoa services include full body and foot massages, manicures, pedicures and waxing. Our foot massage is our signature 'Foho'; it is a distinctive blend of Asian reflexology combined with local techniques. Similar to the Asian foot massage; while we soak your feet in a warm blend of salts and local herbs, we begin by massaging your back, neck, head, arms and hands before finally moving on to your feet

Our full body massage is a unique combination of massage styles including: Foho Samoa, modern Therapeutic, 'Lomi Lomi' (Hawaiian) and Shiatsu (Japanese). This matchless combination came about with many thanks to Tafaoga one of Samoa's premier modern Foho's

ARTICLE BY: **Tutasi & Faosofia Paul**
A Touch of Samoa

a Touch of SAMOA MASSAGE & BEAUTY HAVEN

- FOOT REFLEX MASSAGE • FULL BODY MASSAGE
- FACIALS, NAILS & WAXING

Walk-ins - Welcome. Groups - Appointments Recommended.

OPEN 7 DAYS



TWO LOCATIONS:

PH 843 0035 TAMALIGI: In town, Cross Island Road

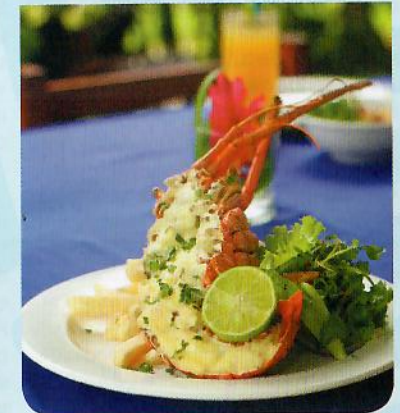
PH 843 0034 TANUGAMANONO: 7 mins from town, Cross Island Road



Restaurant & Bar

Tel +685 25 962

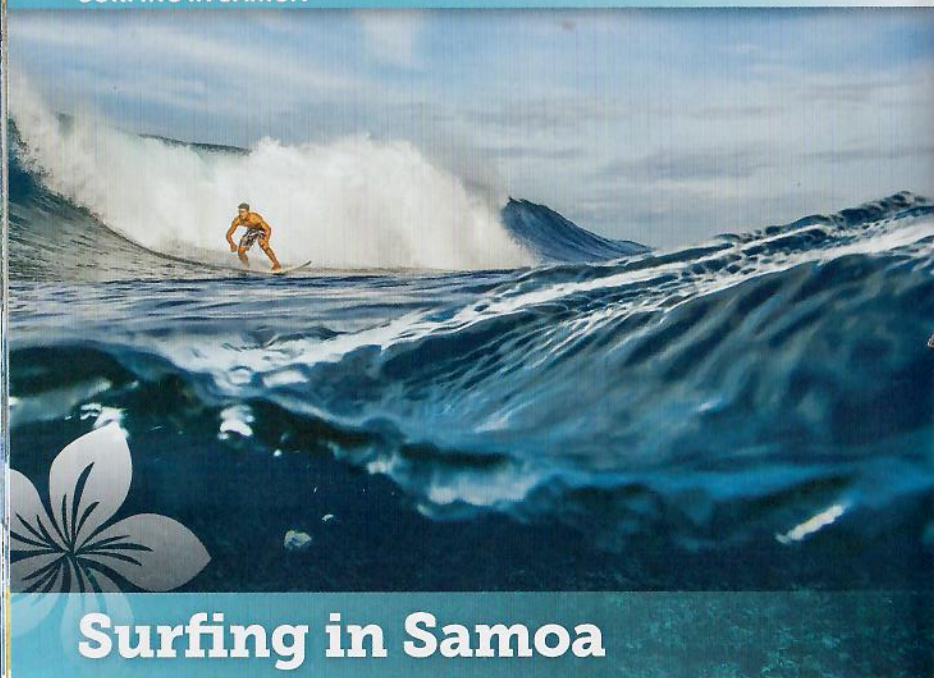
**Serving good quality cuisine
at a reasonable price in
pleasant surroundings**



OPEN FOR BREAKFAST, LUNCH & DINNER

Friday night features either the Lobster Special or Surf to Turf Special offering steaks (sourced from New Zealand) and a variety of seafood including sashimi (when available)

Beach Road, Matautu-tai, Apia - opposite Apia Marina, a short stroll from town



Surfing in Samoa

Most breaks in Samoa are reef breaks. Waves can get very sucky and powerful. It is not recommended for beginners to surf here because of the nature of the breaks

Good working knowledge of reef breaks is essential in order to see your way around safely. If you've never surfed reef breaks before and are comfortable with beach breaks then all is not lost but there are differences to be aware of. With Samoan reef breaks you usually deal with shallow coral bottoms and very fast waves. No real dramas if you've surfed decent waves before. Oh, the coral is also bloody sharp. Some breaks are further from shore than others but if you're a keen bugger like us locals, we paddle to the breaks. A far away break will take about 15 mins to paddle so it's not too bad, remember you've also got to paddle back. If you can't be bothered

then you can negotiate with some of the local fishermen to drop you off and pick you up. Also if you're wondering what the water temperature all I can say is its very warm. Unlike any water you've been in before. Also the water temperature does not fluctuate no matter what time of day it is or what the weather is like

If you can bring more than one board then do so. One for your usual shredding and one for larger waves. You may encounter a cross section of waves. Anything from 2 ft up to 15 ft. If not bring one board that you have total confidence in. If you're wondering what the chances are of breaking boards - there's a very good chance

Also bring a ding repair kit if you can because we get plenty of those. Maybe throw in a spare leg rope. There's like 1 or 2 surf shops in Apia so if you're in the outer areas make sure you're prepared

◀ Photo © Sean Condon/Samoa Tourism

It is a good idea to include a set of booties for the trip to save the agony of filleting your feet on the coral. Also if you are worried about getting skid marks on your thinker bring a helmet too, if you've never used one before it can make you feel a little claustrophobic. So stick with what you're used to. Us local guys don't use such things. We try not to stand up or bang our heads (with little success too)

Make sure you bring a few bars of warm water wax, a decent rash guard, plenty of sun screen and some solarcane for those sore days. Also maybe some eye drops if you're prone to that kind of stuff. Also do not bother to bring any kind of wet suit whatsoever

ARTICLE BY: **Gunther Kruse**
samoasurf.freesurfers.com

Savai'i has surf all year round, generally divided into the two seasons of south & north swells

The more consistent south swells are generated by the winter storms deep in the southern hemisphere (autumn, winter & spring), but it can happen at any time of the year. Tropical cyclones through the north swell season have produced epic South swells

South-east trade winds blow intermittently from around May to October, and are most frequent from June to September. But even in these months, conditions are typically calm and glassy in the mornings and often in the late afternoon as well

From November to early April north swells arrive from the tropical storms and hurricanes of the North Pacific, often the same swells that have already hit the north shores of Hawaii

Quality south swells are also common through this period generated by tropical cyclones in the mid Pacific

In these months the winds are predominantly from the north to north-west, with occasional south-east sea breezes

In the shoulder season months of February to April and October to November, the perfect combination of swell and weather conditions can occur

Water temperatures are warm all year round, averaging 24-28 degrees centigrade

Sunday surfing is only permitted at Aganoa Beach due to the presence of lifeguards

Waves in Samoa can be very powerful and often break over shallow coral reefs

Inexperienced surfers should seek advice from the local operator on Savai'i (Savai'i Surfaris based at Aganoa Beach)

There are beginner breaks on Savai'i and surfable on low tides, but local knowledge is invaluable

Visiting surfers should be aware there is a surfing education fund endorsed by the Samoa Tourism Authority at all breaks, which contributes to the primary schools at the surf breaks in Savai'i

Please remember the code of conduct written by the Samoa Surf Riders Association, 'Smile, say 'talofa', and share the waves'

You will experience a unique uncrowded surfing adventure to remember forever

ARTICLE BY: **Keith Martin**
Aganoa Beach Resort/Savai'i Surfaris



Playing Golf in Samoa

Golf is one of the minor sports but one of the fastest growing sports enjoyed by people of all walks of life. It is played in a very relaxed manner that you often see players playing in groups of 6 or more.

Visitors have easy access to all the courses with no reservations for tee times required. Samoa is blessed with



three 18 hole courses and one 9 hole course. Visitors will enjoy the challenges offered by the different courses and will treasure the experience of golf in the islands.

Le Penina Golf Course at Mulifanua

This championship course is 5 minutes from Faleolo International Airport and is next to the Sheraton Aggie Grey's Beach Resort. It is the home of the SIFA Samoa Open which is played in June every year. The course is very long and narrow and provides the ultimate test to even the most skilled golfers. The testament to this is that the winning score for the professional golfers over the 3 days has always been over par since the Open was held at Le Penina. Besides the challenge you will see some stunning sea views on some of the holes along the sea. The 13th hole along the sea reminds you of the 18th hole at Pebble Beach and it even has a tree in

← Photo ©Samoa Tourism Authority

the middle of the fairway. You can enjoy a cold beer after with some sushi at the two storey clubhouse designed in the shape of a traditional Samoa fale.

Royal Samoa Country Club at Fagalii

This is the oldest of the 3 golf clubs and is about 15 minutes from Apia. It is next to Fagalii Airport. It is a private club but open to visitors. The course itself comprises of 2 distinctive 9 holes as the course originally started off as a 9 hole course. It also has as its signature hole (no. 6) a par 3 that you hit a blind shot from the top of a cliff to the green over 50 metres below surrounded by a creek.

Faleata Golf Course at Tuanaimato

This public course is about 15 minutes from Apia and is situated at the sports complex at Tuanaimato. It is a medium

length and open course and is very popular with golfers doing a quick 9 holes after work. It has plenty of motorised golf carts to get you around and a clubhouse to enjoy the views of Apia with a cold drink.

Sinalei Golf Course at Siumu

This is a stunning 9 hole course belonging to the Sinalei Reef Resort and Spa. It is a 30 minute drive from Apia along the picturesque Cross Island Road. It is set amongst nice gentle hills and coconut trees. It is a good test of your short game. Anyone will enjoy going around twice from the 2 different tee boxes to complete your 18 holes in a slice of paradise.

ARTICLE BY:

Patrick Fepulea'i

Le Talie

CAR RENTALS

PESEGA | APIA

The best deals
on wheels!

Seven day rental =
free pick-up and drop-off
at airport or hotel

Ph +685 29 014

Mobile +685 752 9014

Email letalie@ipasifika.net



- Family run business
- Newer fleet of vehicles
- Customer & back-up service

Photo ©Amoa Resort



Gamefishing in Samoa

Game Fishing or Sport Fishing in Samoa - be prepared for the unexpected! Samoa holds world record fish in it's nutrient rich waters year round

From giant Blue Marlin within reach just minutes from the dock, barrel like yellow Fin Tuna that test anglers to their limits, shoals of Mahi Mahi that are always welcome on the menu. The grace and speed of Sailfish as they repeatedly attack the lures. The reef holding Giant Trevally, ready to test any kinks in an angler's



preparation. Deep fighting Dog Tooth Tuna that patrol the off shore boomies, Spanish Mackérel and Barracuda

Gamefishing in Samoa is one of the best kept secrets in the south pacific, add to this a perfect year round climate, the friendliest people you will ever meet and a fleet of well-equipped boats, with professional crews that want to catch fish more than you do! You have a recipe to catch fish most people only dream of

Samoa is fast becoming the game fishing destination of the Pacific and place of choice by world class anglers. The fleet of boats fishing the waters of Samoa vary from 43 foot 600hp v8 powered catamaran, to 50hp long boats, so there is a way for every body to get out on the water in some way shape or form

ARTICLE BY: **Jonathan & Bronwyn Barlow**
Extreme Measures Fish & Dive Charters



Manu Samoa

The most popular sport played in Samoa is rugby union, both 15's and 7's, and it is played in nearly all villages

Players from Samoa can be found playing in teams worldwide with a consistently strong presence in the New Zealand All Blacks and in New Zealand inter-provincial teams

The Samoa Rugby Union was founded in 1924 after the Marist Brothers brought the game to Samoa in 1920. The first international match was against Fiji in 1924, and featured a palm tree in the middle of the pitch

12 provincial unions make up around 120 clubs with nearly 5,000 senior and twice as many junior players in a country with a population of around 183,000 people

The national team is called Manu Samoa and is regarded as a tough opponent having competed in every World Cup since 1991. The name Manu Samoa is in honour of a famous Samoan chief and a traditional Samoan war challenge called the siva tau is performed before each game

Manu Samoa play in blue and white uniforms. They do not train on Sundays because many of the team are devout Christians

Apia Park, with a capacity of 15,000 is the home stadium of Manu Samoa and the venue for provincial rugby matches in Samoa. The stadium is located on Matautu Street (the Main East Coast Road) on the outskirts of town. Attending a local game here is a unique experience; a good opportunity to see rugby Samoan style and to rub shoulders with the locals



Tatau

Tatau is alive and flourishing in Samoa, one of the few places in the world where the art form is practised in the traditional way by tufuga ta tatau (master tattooists) using handmade tools of bone, tusks, turtle shell and wood

Striking examples can be seen on individuals where every little symbol has meaning and symbolism, and unique designs tell intricate layers of stories

The pe'a is the traditional tatau given to men. It begins at the waist and covers just about every bit of skin, right down to the knees, with intricate designs. It is a painful process considered a rite of passage into adulthood and done on both titled and untitled men

The malu is the traditional tatau given to women and covers the leg from the

upper thigh to behind the knee. It is not as dense as the pe'a

In Samoan society, the pe'a and the malu are viewed with cultural pride and identity, as well as a hallmark of manhood and womanhood

There are armband and legband designs as well

Some of the tufuga ta tatau travel the world and teach at symposiums, and tattooists from all over the world come to Samoa to study their ways. They have been instrumental in reviving traditional tattooing in Polynesia

Tufuga ta tatau are often working at the Cultural Centre fale behind the Samoa Tourism Authority Visitor Information Centre on Beach Road in Apia, where one can view these artisans and their assistants creating



tatau in the traditional way. There is no charge to view, but be mindful of protocol. Enquiries can be made at the Visitor Centre

There is a saying in Samoa, "E ta muamua le gutu ae le ta le vae". Literally translated this means "Tattoo the mouth before tattooing the legs" meaning that you should strive for a little bit of wisdom first before you rush to get a tatau done

There are tattoo studios using modern, conventional equipment that are available to both visitors and locals

If you are considering getting a tattoo while you are in Samoa, ask around and do your homework as there are good and expensive as well as bad and cheap artists but the prices for good quality work are unbeatable





Fa'afafine of Samoa

These talented 'effeminate man' are Samoa's own 3rd gender - the term fa'a means 'to be', fafine means 'a woman', and no the fa'afafine are not just cross-dressers, not males who have been reared as females - most see themselves as females despite their gender markers, and they grow up choosing to identify with the female gender

Today's fa'afafine run government departments, run successful businesses, are engaged in work involving support and care in the community, medical professionals, legal practitioners, youth advocates and because of their skills and flair are often in demand as employees in the tourism and hotel industry

Although acceptance levels of Samoa's 3rd gender is at an all-time high with the Prime Minister sitting in as Patron to the Samoa Fa'afafine Association, different villages and districts treat fa'afafines differently

Samoan culture treats and respects fa'afafine. Western culture through religious influences does not, so the fa'afafine

entrench themselves in their culture in order to be accepted into the community

The modern fa'afafine of Samoa are organised under the Samoa Fa'afafine Association Inc. and are the darlings of the Samoan community both local and overseas for the development of their own niche in the modern Samoan entertainment industry, working in drag shows, fashion parades and cabarets, and their national annual pageant entertaining local and overseas audiences alike, and raising money for charity

Fa'afafines also have their "fa'asinomaga" or who you are and where you sit in the spectrum of your family, your village, your church, your district, and your country

With their motto of "Ola Tautua, Ola Alofa" of "Live to Serve, Live to Love", the Samoa Fa'afafine Association has over 150 registered members in Samoa and over 200 members living overseas. So don't be shy, catch a fa'afafine show when you are next in Samoa

ARTICLE BY: **Ymania Brown**
Samoa Fa'afafine Association (Inc)

AA Rent-A-Car SAMOA

T: 25100
M: 7799088
E: info@aarent-a-car.net
W: www.aarent-a-car.net

Experience The Difference

We offer best rates on late model vehicles:

- SUVs, Sedans, Hatchbacks, Minivans •
- Full size Vans & Ute Pickup Trucks •
- Scooter rentals available •
- All vehicles are fully insured including third party cover •
- Free delivery to Hotels in the town area •

From as low as \$88 tala per day*

Insurance and gst included

**Conditions apply*





Doing Business in Samoa

Samoa has become an international success of late, showcasing strong economic indicators throughout the financial crisis. Foreign reserves are in a relatively healthy state, the external debt is stable, and inflation is low. Economic growth has also been sustained, underlining the health of the island nation.

Government commitments to deregulate the financial sector, encourage investment and apply fiscal discipline bode well for future growth

Not only is Samoa economically sound, it is also the most politically stable country in the region. An attractive fiscal scheme and investment incentives have attracted a wealth of international businesses, which are also being pulled by several well performing industries and affordable,

English-speaking skilled labour. Tourism, fisheries, food processing and engineering are developing with real vigour in the country, as the agricultural stronghold remains stable

New Zealand and Australia have a healthy economic relationship with Samoa

Internet coverage in both Upolu and Savai'i is generally good but the service can be slow and does go down at times. Access is by either pre-paid wifi cards linked to a hotspot or by purchasing a USB Modem and data packages. Both service providers are competitive so it pays to shop between the two. Both services are available at Faleolo International Airport on arrival

Smartphones work well in Samoa and it pays to buy a simcard and get on the local network as it is much cheaper than global roaming for both local and international calls

Banking is easy in Samoa and both Westpac and ANZ are well represented. Apia has many eftpos terminals and funds can be accessed using Debit & Credit cards

Many accommodation properties offer well equipped meeting & conference rooms, discuss your requirements and they will meet your needs


Legal, accounting and debt collection firms are well represented in Apia and can provide professional services with in-depth local knowledge which is invaluable

The Samoa Chamber of Commerce has an impressive membership base and is a good resource for networking




Business attire is practical in Samoa, smart casual is the order of the day. English is spoken in business circles


Be patient in terms of the decision making process, this may take longer as it may involve consultation with family and village before a decision is reached




TALAMUA

MEDIA & PUBLICATIONS

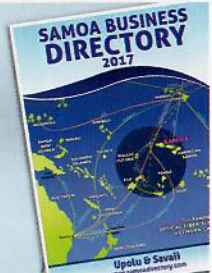
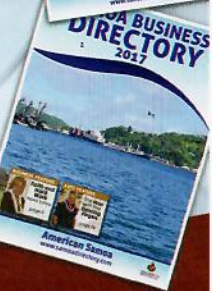
- 

Media Company Award
- 

Journalism Excellence Awards
- 

Radio Broadcaster Award

- Online News
talamua.com
- SamoaFM Radio **93.7 / 104.1**
talamua.com/samoafmapia
- Samoa Business Directory
samoadirectory.com
- Printing & Graphic Design
- Website Development
- 3D Modelling and more...

Suite 13, Level 2 Nia Mall, Fugal ei
 P.O. Box 1321, Apia, Samoa.
 P: +685 23827 | M: +685 7777023 / 7780527
 E: info@talamua.com / talamua_marketing@gmail.com



Manono Island

Getting to Manono Island is easy. Catch the Manono or Falelatai bus from Apia and that will drop you off at the landing site at Manono-uta at the western end of Upolu, just down the road from Mulifanua Wharf

It takes about 20 minutes to reach Manono Island by boat, a distance of 4 kilometres. The island is situated in the Apolima Strait between the two main islands of Upolu and Savai'i. With an area of just 3 square kilometres (289 hectares), the highest point of the extinct lava cone reaches 80 metres above sea level.

Close by is the neighbouring island of Apolima, surrounded by rugged cliffs and hosting a small settlement. These islands can be seen when crossing on the ferry between the two main islands

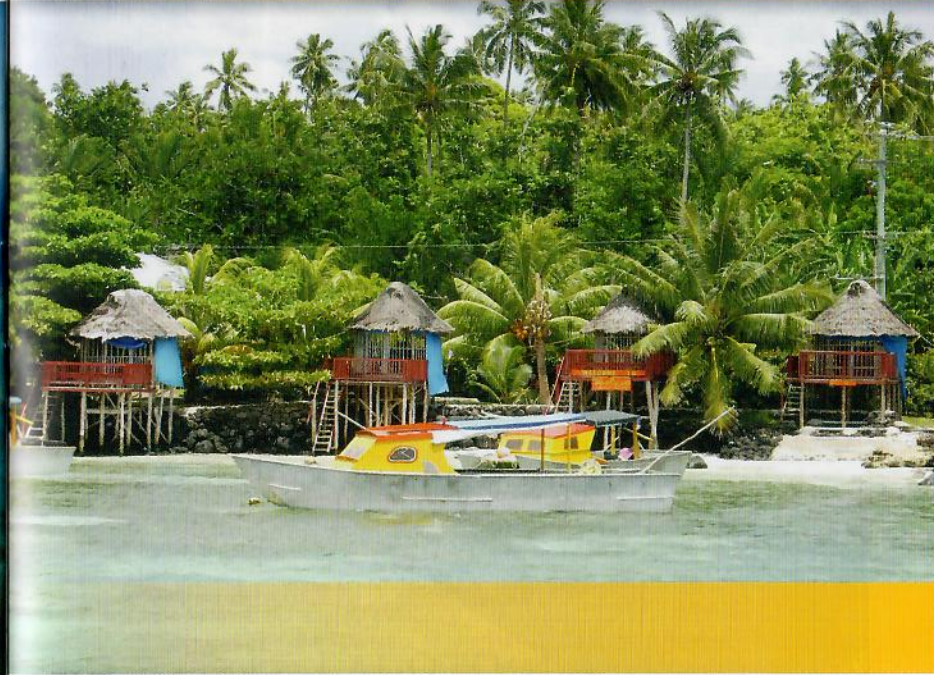
There are about 800 people living on Manono Island around 4 fishing villages, there are no cars or roads and no dogs

The picturesque pathway around the island is easy to walk and takes an hour or longer depending on how many of the locals and school kids you stop and chat with

There are tracks leading up to a number of archaeological sites in the interior of the island, such as the 12-pointed ancient star mound on the peak of Mount Tulimanuiva

At Lepuaii Village in the southwest of the island is the Grave of 99 Stones. Each stone represents one of the wives of the great chief Vaovasa.

There is good snorkelling, swimming, fishing and canoe paddling; the



area is a habitat of turtles and flying foxes

This is a great place to experience real Samoan hospitality, warm friendly people living the Samoan way of life off the land and sea

Accommodation operators provide a complete package which includes transfers, meals and snorkelling trips and visitors will find Manono Island a very affordable holiday

The accommodation on Manono Island is modest, the fish and the pineapple very fresh and the food from the umu is some of the tastiest to be had. Book direct with the operators

If visitors want to make a day trip to Manono Island or take a Half Day Tour, contact Manono Island Boat Transfers & Tours

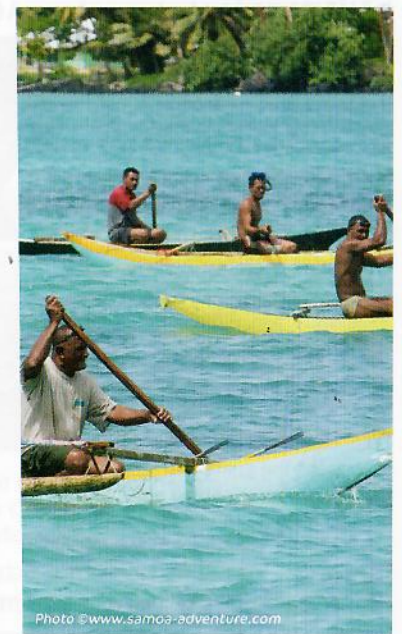


Photo ©www.samoan-adventure.com



Savai'i

On the 'Big Island' of Savai'i, the largest landmass in Polynesia outside of Hawaii and New Zealand, there are so many bays & beaches that fit the childhood imagination of the quintessential South Pacific Island

Called the Cradle of Polynesia and known as the soul of Samoa the people of Savai'i are warm, generous and welcoming to visitors

The white sand beaches are legendary and the island has an abundance of natural attractions such as lava fields with eerie lava tube caves, blowholes, mountains, waterfalls, rainforests teeming with birdlife, and ancient archaeological sites including the Pulemelei Pyramid, Polynesia's largest ancient monument

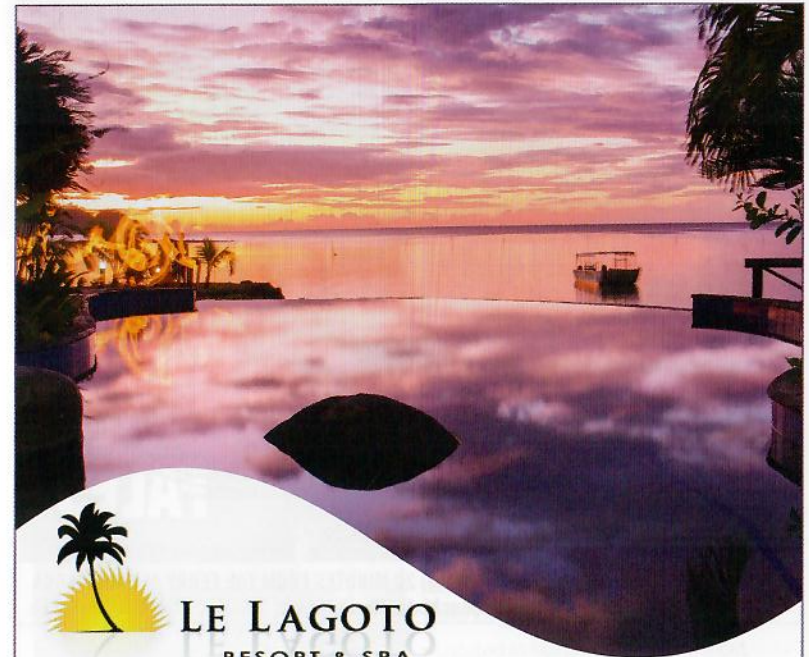
Savai'i has an exceptionally good road that circles the entire island, a round trip of 190k. A superb scenic drive almost entirely hugging the coast apart from a gentle inland climb up to the A'opo Conservation Area on the North Coast Road. Villagers take much pride in maintaining and beautifying the roadside

verges, and in places it is like driving through a tropical Garden of Eden. This is an ideal island to bike around

It is very easy to get to Savai'i from Upolu, the ferry service is safe, reliable and cheap, even to take a rental car across. The scenic journey takes 1 ½ hours and passes by the islands of Manono & Apolima. Terminals at both ends are well facilitated with parking, shelter & toilets

Savai'i is well serviced with two domestic airports, a health centre and a new market at Salelologa from which the local busses depart. The cell phone coverage is good. There is a new Visitor Information Centre in town about 500m from the ferry terminal. From the ferry terminal go left to the new market and busses, or go right to the information centre and town

The range of accommodation on Savai'i will meet the needs of any traveller, from fales on the beach, backpackers, hotels and smart resorts catering for the discerning traveller. There is no shortage of accommodation so even at short notice and during peak season you will find a comfortable bed that suits



LE LAGOTO
RESORT & SPA

"You haven't been to SAMOA, unless you're in SAVAI'I"



Air-conditioned Rooms • Restaurant & Poolside Bar • Day Spa • Beach Swimming Pool • Tours & Transfers • Car Rental • Pizzeria • Wi-Fi Access
Weddings • Cultural Activities • Fiafia Night • Kayaks & Paddle boards

NORTH COAST ROAD, FAGAMALO, SAVAI'I, SAMOA
+685 58 189 lelagoto@samoa.ws www.lelagoto.ws



The Perfect Holiday...

Superb swimming and snorkelling

Clean & comfortable fales - breakfast & dinner included

Accommodation on the beach or in a garden setting

Bar & restaurant

Fia Fia nights with local food & dancing






LAUIULA BEACH FALES

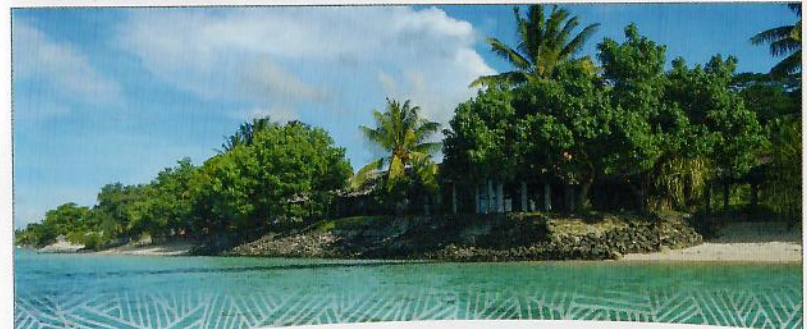
LOCATED AT LANO (EASTERN SIDE OF SAVAII) 20 MINUTES FROM THE FERRY AT SALELOLOGA
Phone (685) 752 0760 Email laiulabeachfales@yahoo.com www.laiulabeachfales.com



savaii
lagoonresort

Phone (685) 54168
savaiilagoon@samoa.ws

-  11 beachfront & garden bungalows on one of the most stunning beaches in Samoa, sheltered by a beautiful lagoon on the north-east coast of Savaii.
-  Catering for couples seeking a romantic escape and for families looking for that extra bit of sun during the school holidays.
-  Snorkel the crystal clear waters, kayak leisurely on the lagoon, relax with a book from our library or explore the island. Tours arranged.
-  Our beach bar & restaurant is at the water's edge. All bungalows have some cooking facilities.
-  Our glass bottom boat and fishing charters operate from the lagoon. For more info: www.savaiilagoon.co.nz



Stevenson's
@
Manase
Beach Resort Savaii

Stevenson's at Manase



Brand new swimming pool and brand new villas for you to enjoy!



- Located at Manase, one of the most beautiful and popular spots in Savai'i
- Air-conditioned Suites with contemporary Samoan design
- Beach Villas on the water's edge - ideal for families
- Euro Fales beside the beach sheltered by coconut palms
- Breakfast served in the garden in a large open-air traditional fale
- Lunch and dinner available from our beach bar overlooking the water
- Watersports and white sandy beach are at your doorstep

Phone (685) 58219
E stay@stevensonatmanase.com
www.stevensonatmanase.com





Photo © Le Lagoto Resort & Spa

Diving in Savai'i

Close your eyes and imagine a blue sky, pristine sandy beaches, a light breeze, and clear waters with year round temperatures of between 27 and 30 degrees. This dream comes true in Samoa. Then add to that some of the world's best and unspoiled snorkel and diving spots a short distance from shore

Samoa offers fantastic watersport activities for both beginners and advanced divers. If you have always wanted to try scuba diving or do your PADI scuba dive course, the clear warm waters make Samoa one of the best and most suitable environments to go diving

There is no discomfort with cold water or challenges with currents, no lengthy boat rides or dangerous down-swells, instead it is relaxing and pure enjoyment. Knowledgeable local staff are always there to assist

There are over 900 species of fish and 200 species of coral that divers can watch and enjoy, as well as the graceful peace of turtles along the reefs. There is likely to

be hawk-bill turtles or green turtles during your aquatic adventures on Savai'i

And keep in mind, it all happens not in a zoo or aquarium, or in captivity, but in the open ocean and you are there to experience it. With a little luck you can spot dolphins and even whales

Samoa has stunning shipwrecks, some quite new and purposefully sunk, others are older and have a history of being victims of storms or navigational errors. The volcanic nature of Savai'i has created a unique environment of cave tunnels to swim through, mixed with canyons and walls covered with coral. Samoa offers all this and a lot more close to shore

Bring your waterproof camera or rent one from the dive shop and take pictures and movies of this underwater paradise to show to your family and friends

Finish the day of snorkelling or diving with a drink on the beach and enjoy stunning sunsets. You deserve it

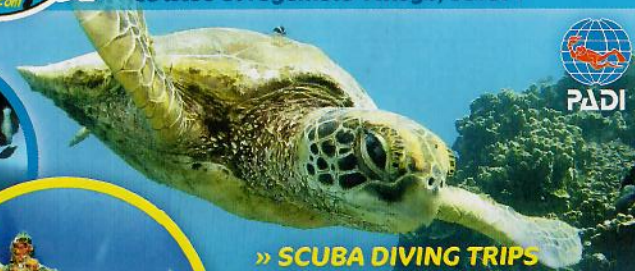
ARTICLE BY: **Olaf Weinhold**
Dive Savai'i



divesavaii.com

Phone +685 54 172

Mob +685 776 4900 Email info@divesavaii.com
Located at Fagamalo Village, Savai'i



- » SCUBA DIVING TRIPS
- » PADI SCUBA DIVE COURSES
- » BOAT SNORKELING TOURS
- » SNORKELING GEAR RENTAL

Open Monday to Saturday

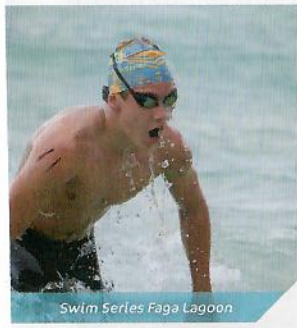
Take me to Savaii

Savaii - Come and see the real Samoa
www.takemetosavaii.com takemetosavaii@gmail.com

i TOURIST INFORMATION:
Open Monday to Friday Located 100m from Savaii Wharf
TELEPHONE (685) 842 3220



Calendar of Events 2017-18



Swim Series Faga Lagoon

June 2017

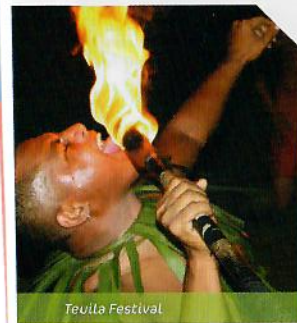
- **June 1:** Independence Celebrations
- **June 2:** International Super Rugby: Auckland Blues vs Queensland Reds
- **June 23:** International Rugby Union: Manu Samoa vs Wales

July 2017

- **July 15:** International Rugby Union - Manu Samoa vs Fiji
- **July 15:** International Sports Event - Lalomanu Ultra & Half Marathon (run race)
- **July 29:** International Sports Event - Samoa Warrior Race (triathlon)
- **July 31-Aug 3:** International Sports Event - Pacific Open Water Challenge (swim series)

August 2017

- **Aug 3-5:** International Sports Event - Samoa Swim Series
- **Aug 25-Sept 3:** Vailima Alo Paopao Festival (traditional canoe paddling)



Teuila Festival

◀ Samoa Triathlon

September 2017

- **Sept 2:** International Sports Event - Perimeter Relay
- **Sept 3-8:** Teuila Festival (cultural)
- **Sept 4-8:** Pacific Islands Forum Leaders Meeting
- **Sept 8:** Miss Samoa Beauty Pageant (part of Teuila Festival)
- **Sept 11-16:** International Sports Event - Ford Tour of Samoa (run race)
- **Sept 16:** Food & Wine Festival
- **Sept 23:** All Saints Anglican Food & Games Bazaar

October 2017

- **Oct 8:** White Sunday - Children's Day
- **Oct 21:** International Sports Event - Sa'uai Savaii Giants' Race (triathlon)

November 2017

- **Nov 3-5:** American Samoa Jazz & Arts Festival
- **Nov 10-12:** Samoana Jazz & Arts Festival of two Samoas

December 2017

- **Dec TBA:** My Island Christmas Lights

January 2018

- **Jan 6:** Samoa Tourism Excellence Awards

April 2018

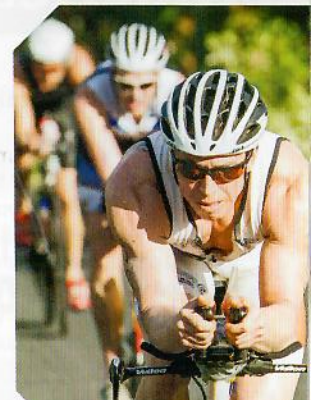
- **Apr 17-18:** American Samoa Flag Day
- **Apr TBA:** Samoa International Game Fishing Tournament
- **Apr TBA:** Samoa Tourism Exchange Forum

May 2018

- **May TBA:** American Samoa National Tourism Week Festival
- **May TBA:** International Sports Event - Five Islands Swim Challenge
- **May TBA:** Samoa Independence International 7's
- **May TBA:** International Sports Event - Independence Marathon



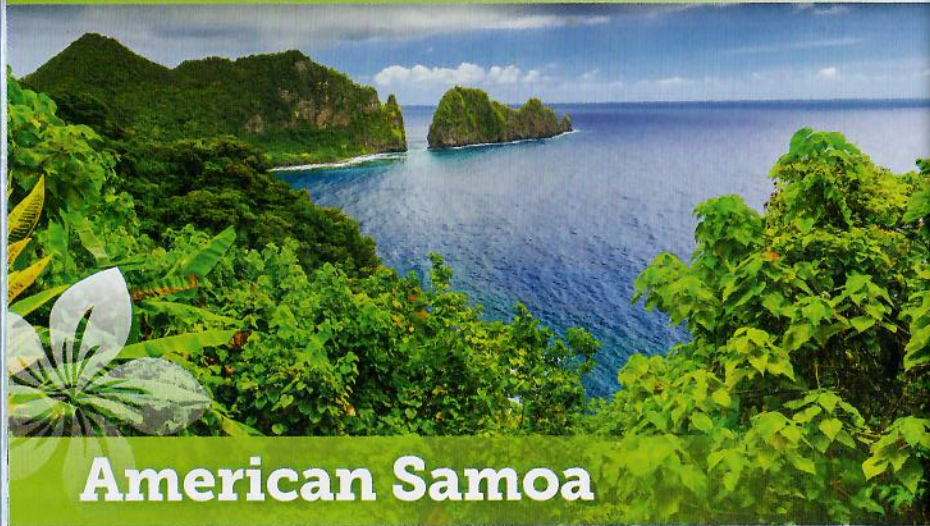
Pacific Open Water Challenge



Warrior Races



Falefa Falls Run



American Samoa

The Islands of Tutuila & Manu'a

American Samoa lies 45 miles east of the Independent State of Samoa, a 35 minute flight by island hopper across the international dateline. This southernmost territory of the United States boasts five inhabited islands and two coral atolls; as well as over 13,000 acres of National Parks and over 13,500 square miles of Marine Sanctuaries

The islands of American Samoa have a richly diverse landscape with steep, tropical mountains, secluded beaches, and one of the healthiest coral reefs in the world. A population of 55,000 are made up of Samoan residents plus a melting pot of other cultures from around the world; however, the American influence can be seen in the well maintained infrastructure, reliable electricity, clean coast lines, and upgraded telecommunications infrastructure. American accented English is universally spoken so communicating will be a breeze

American Samoa's Manu'a Islands have the distinct honour of never having been conquered. A fact that the last king of

Manu'a, Tui Manu'a Elisara, made clear when he and the other Manu'a chiefs waited four additional years to sign the Deed of Cession. While the islands of Tutuila and Aunu'u enthusiastically signed their Deed of Cession in 1900, the Manu'a Islanders waited and finally ceded sovereignty to the United States in 1904

The Manu'a Islands are about 50 miles east of Tutuila and Aunu'u, and are reachable by island hopper flights and boat. The wild and untamed beauty of Manu'a's beaches and rainforests have been rated by travel bloggers and writers as some of the travel world's best kept secrets. Ofu Beach, part of American Samoa's National Park system is both accessible and offers visitors terrific snorkelling, swimming, and diving. On the island of Ta'u, divers can swim among the giant corals of Ta'u, featuring coral head colonies as large as houses

New Zealand, Australian, United Kingdom and Canadian passport holders won't need to obtain separate visas to travel to American Samoa. Visit our web site www.americansamoa.travel for more travel information, pictures, and hotel and tour listings

Polynesian
AIRLINE OF SAMOA

Savai'i SAMOA
'Upolu
Pago Pago AMERICAN SAMOA
Ofu
Ta'u
INTERNATIONAL DATELINE

CONNECTING THE TWO SAMOAS

A reliable schedule and competitive airfares that suit your travel needs

We offer a high frequency of flights between Samoa and American Samoa and charter flights to Savai'i (Upolu, Samoa) and neighbouring Pacific Island countries such as Niue, Vavau (Tonga), Wallis & Futuna and others

www.polynesianairlines.com

Samoa: Apia Sales +685 22172, Fagalii Airport +685 22173
American Samoa: Pago Sales +684 6999126, Pago Airport +684 6999127
enquiries@polynesianairlines.com or book online

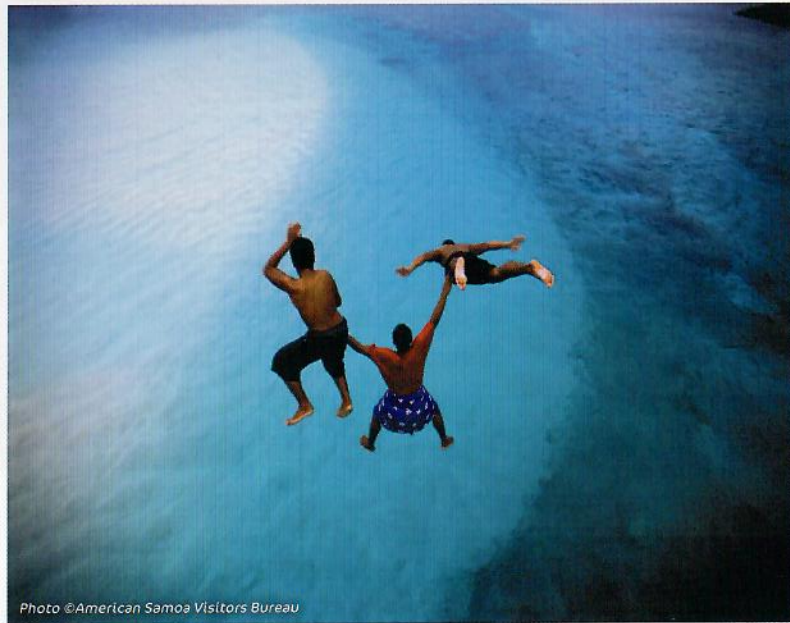


Photo ©American Samoa Visitors Bureau



AVIS PAGO PAGO

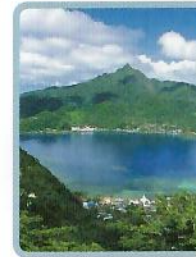


- Great rates and service
- Wide selection of late model cars, trucks and vans
- Air conditioned vehicles

Pago Pago International Airport

☎ (684) 699-2746 ✉ reservations@avis.as 🌐 avis.as

AVIS



Afio Mai
TRADEWINDS
HOTEL
AMERICAN SAMOA



Tradewinds Hotel is a tropical haven where guests can find peace & relaxation in style and comfort with superior service reflecting the spirit of American Samoa. Our staff are dedicated to providing you the very best service to ensure that your stay is as relaxing or productive as you want it to be.

- Equator Restaurant Hours:**
- Breakfast : 6am to 10am daily
 - Lunch : 11am to 4pm daily
 - Dinner : 6pm to 9.30pm daily



Ottoville Road, Pago Pago, American Samoa 96799
Phone +1 (684) 699 1000 info@tradewinds.as

Visit us at www.tradewinds.as or www.facebook.com/TradewindsHotelAS



TALOFA AIRWAYS



FLY TALOFA AIRWAYS RIDE LIKE THE WIND

Samoa's newest inter-island airline operating two Twin Commander 690B, 9-seater aircraft. Comfortable, roomy, air-conditioned cabins with great visibility for your enjoyment.

Take a flight to Pago Pago for the day, just across the water

Book a scenic flight over beautiful Samoa

Enquire about our charter flights to any Pacific Island

Book a flight and visit the Kingdom of Tonga

"Best little airline in the South Pacific"

Ticket sales at Talofa Airways office in Vaea Street, Apia (next to Maria's Pharmacy) from 8.00am to 4.30pm. Also at Fagali'i Airport Terminal, Faleolo Airport Terminal and Tafuna Airport Terminal in Pago Pago.

APIA MAIN OFFICE (685) 30-005 / 30-006

FAGALI'I (685) 30-007 TAFUNA (684) 699-3002

e: enquiries@talofairways.com facebook: Talofa Airways

www.talofairways.com