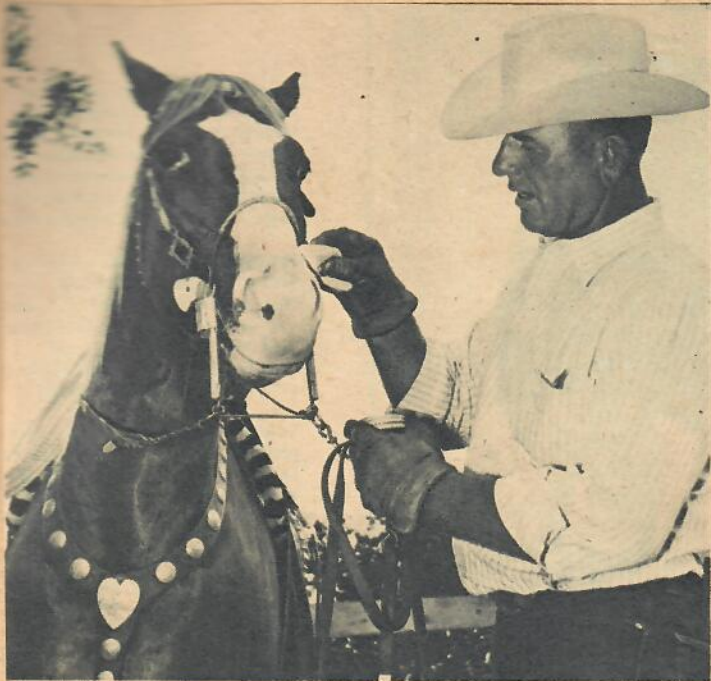


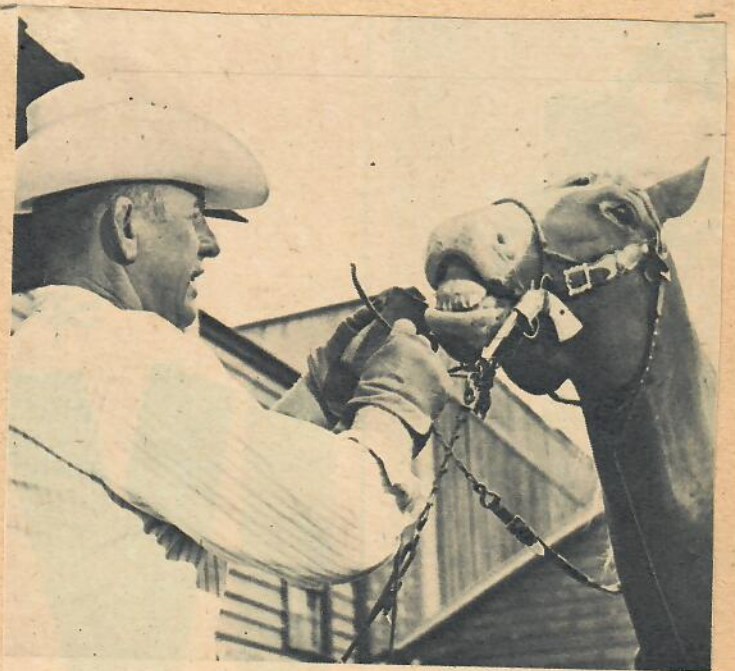
*Scrap
Book*



That distinctive white marking on Champion's nose is not entirely natural. Whitening is used to accentuate it.



A toothbrush becomes an eyelash brush as Dude untangles these glamorous lashes that are Champion's own, not false.



Most movie fans realize that a star's good looks are not left wholly to nature. Behind the scenes there lurks a makeup man to guarantee handsomeness. In Westerns, the same is true of the leading man's co-star—his trusty steed. Gene Autry's horse, Champion, has Dude Chick for his makeup man. Chick makes certain Champion's teeth are white and bright so they will glisten for the cameras.



First Navy patrol plane to have two piston and two jet engines is the long-range Mercator.

Convair XP5Y-1 is long range, day-night search plane. ▼

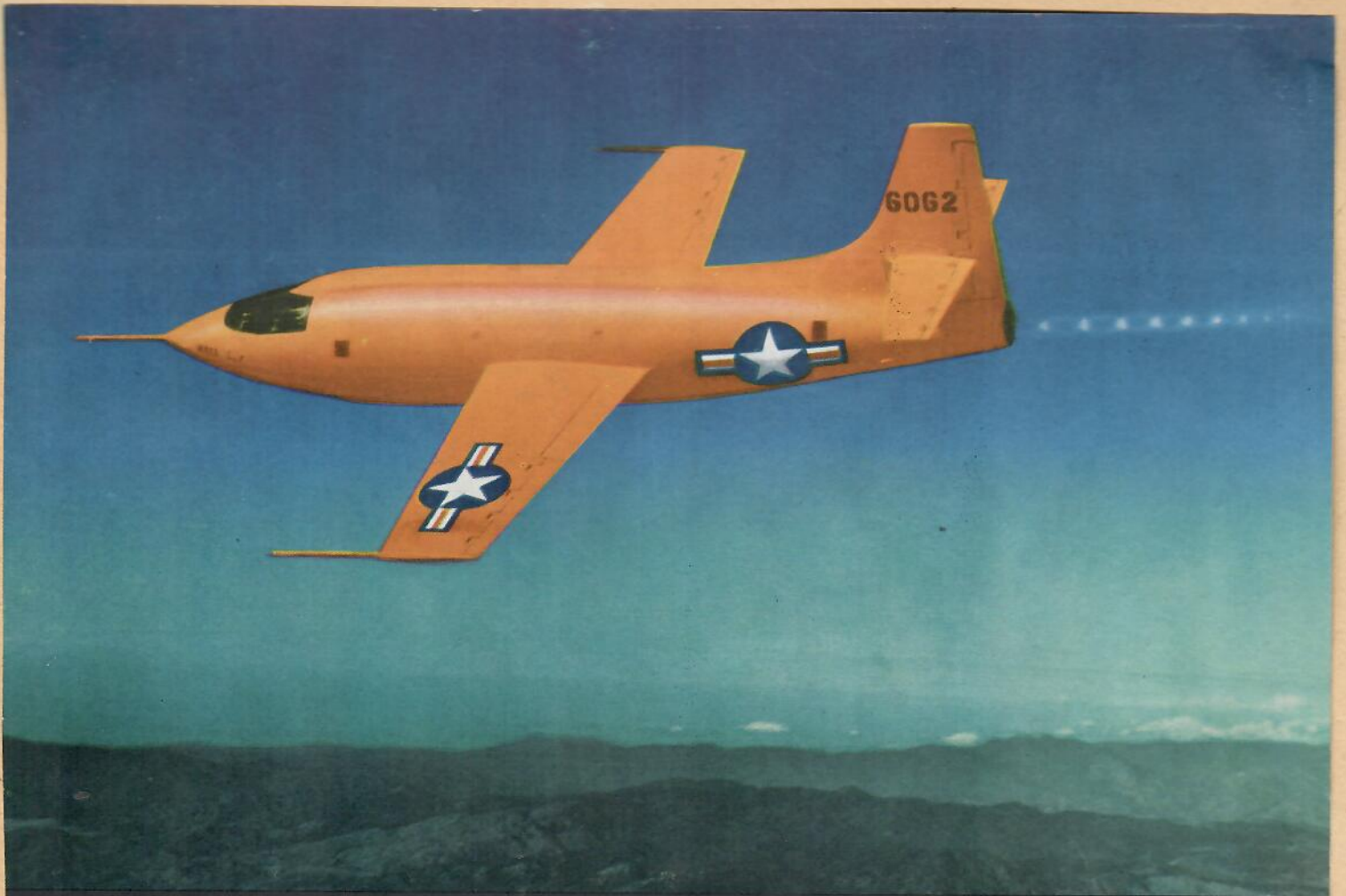




▲ A2D Skyshark has propellers driven by two jet turbines.



PO-1W Constellation tests electronic systems for Naval planes. Note plane's radome and drones below.



Bell X-1 was first U. S. plane to fly faster than sound. Experimental rocket craft has 1,000-m.p.h. top speed.



Designed especially for Essex-class carriers, the Douglas AD is one of the Navy's most versatile planes.



▲ Navy's AJ-1 bomber is one of largest carrier aircraft.

Bat-wing Cutlass is a first-line Navy jet fighter. ▼





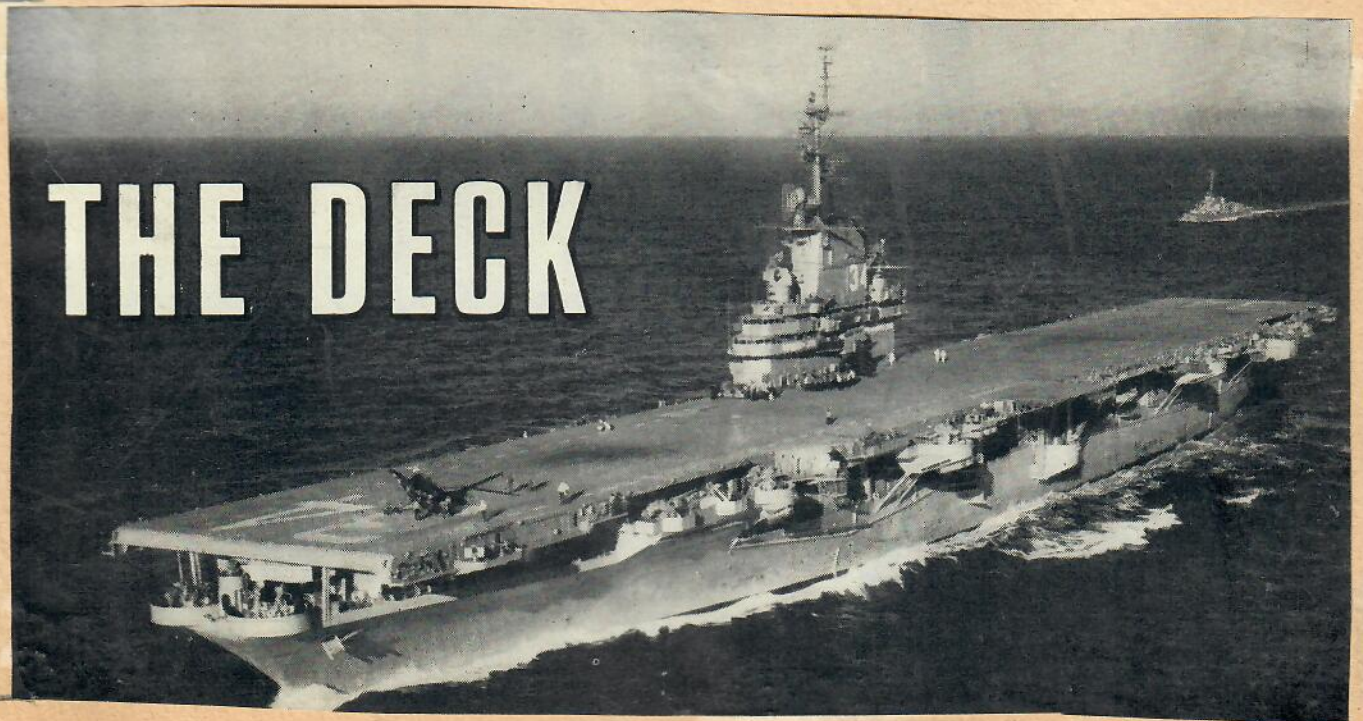


Grumman Panthers in Marine war paint. Several Russian MIG-15s have fallen before these fast fighters.



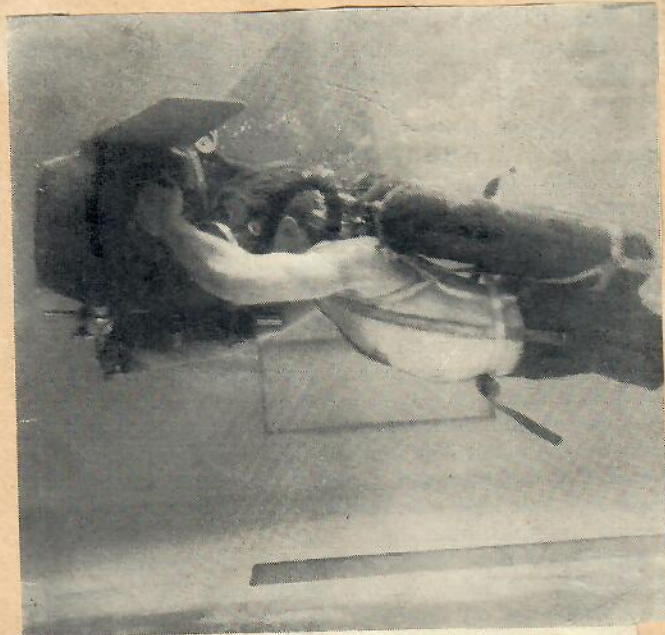
▲ Twin-jet, carrier-based Skynight has advanced radar.







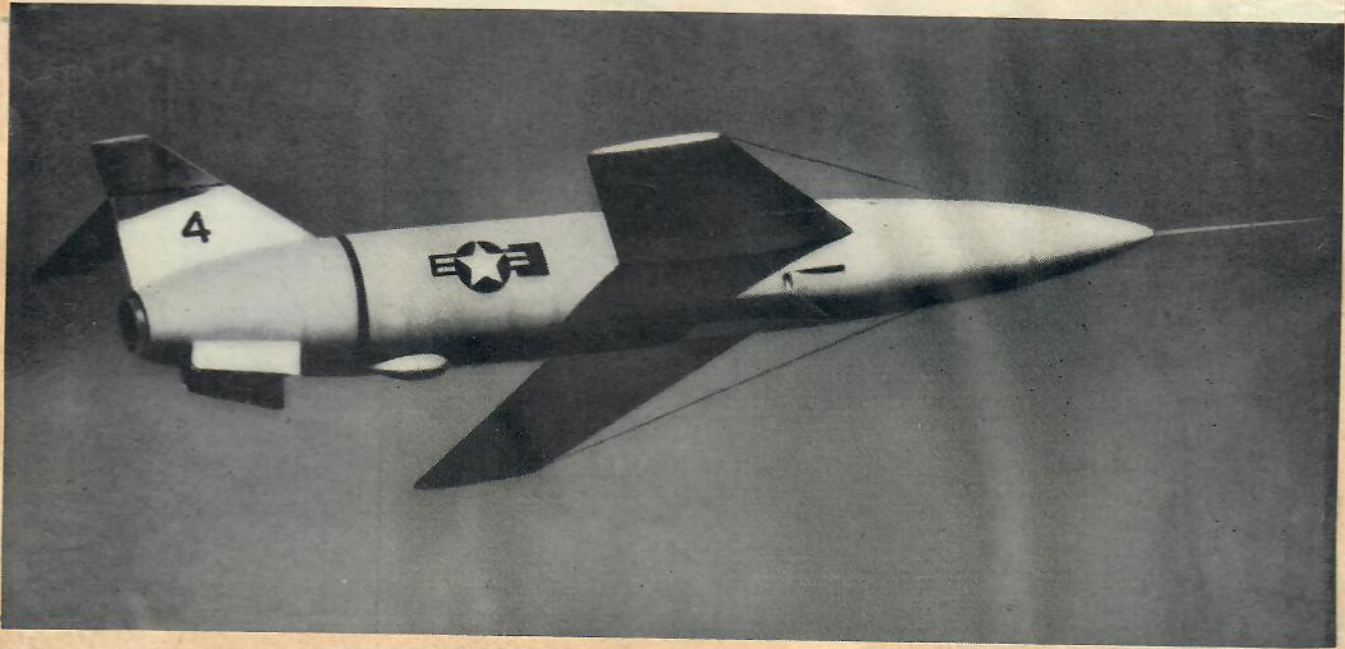
British Avro 707B delta-winged plane has air intake in top center of its fuselage. Cigar-shaped cylinder at base of fin and rudder contains small anti-spin parachute.



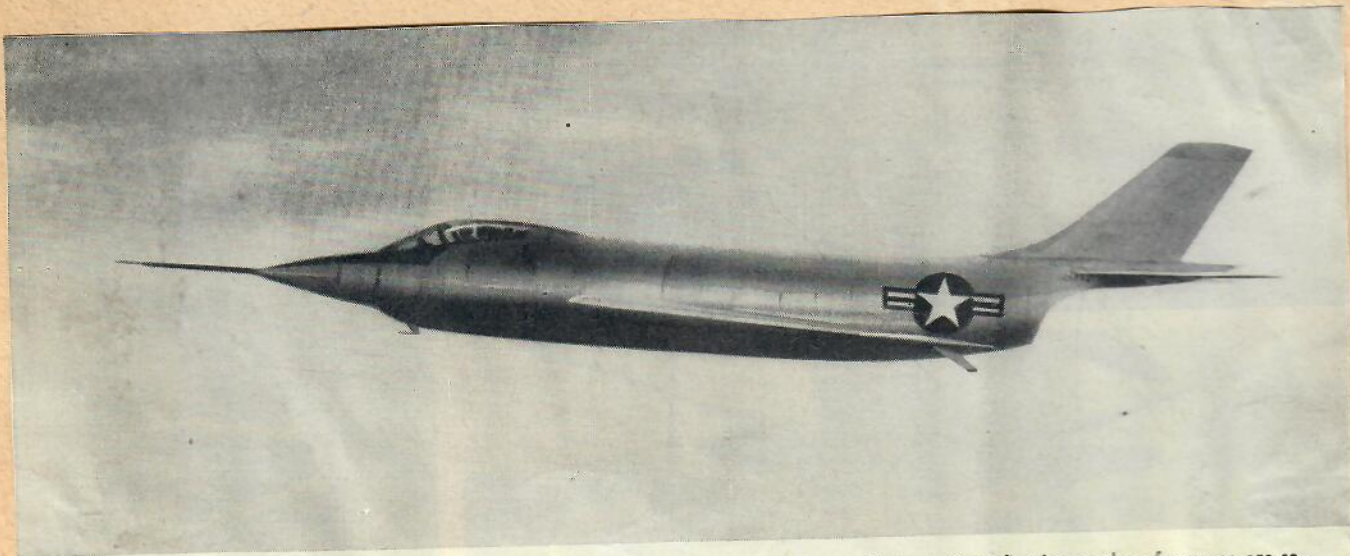
Photographer-frogman swims with submarine camera which propels itself and takes motion pictures of submerged hazards.



An excellent close-up of the sleek, cigar-shaped *Matador* showing wing sweepback, antennae and position of jet powerplant. The missile is tracked by radar range stations on the ground and telemeters information back to operators who guide it to the target.



The B-29 takes off before dawn from Eielson on a routine Ptarmigan flight to the North Pole. The 4,000-mile round trip takes 17 hours.

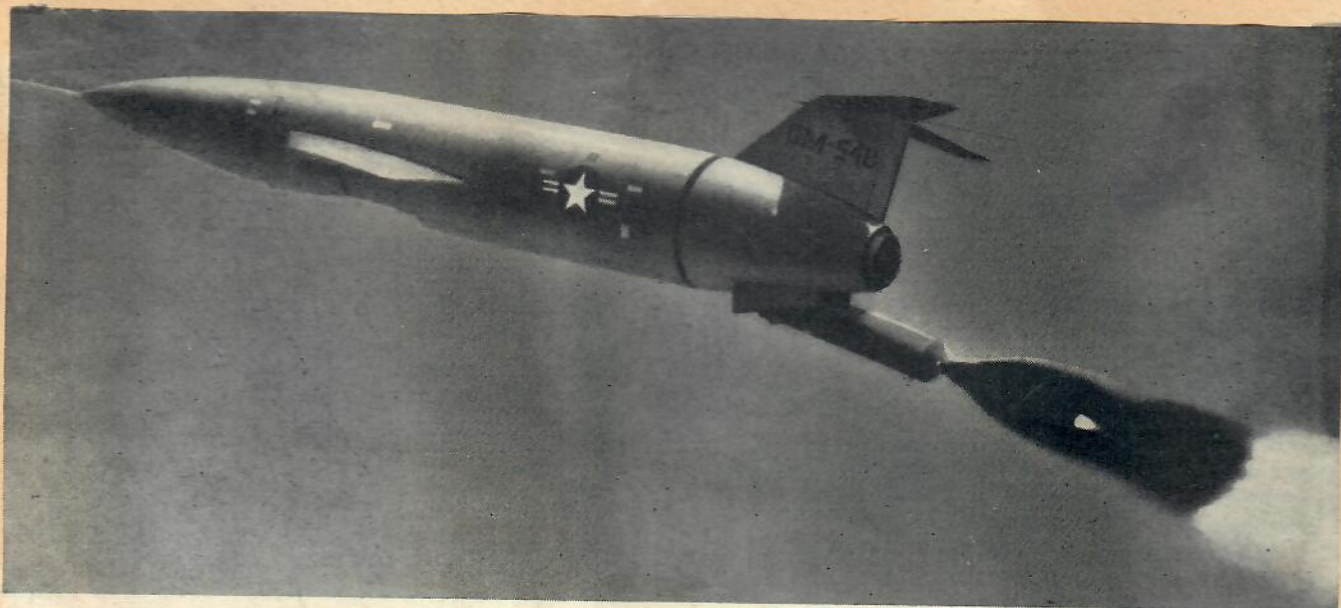


St. Louis. Specifications and performance are se-

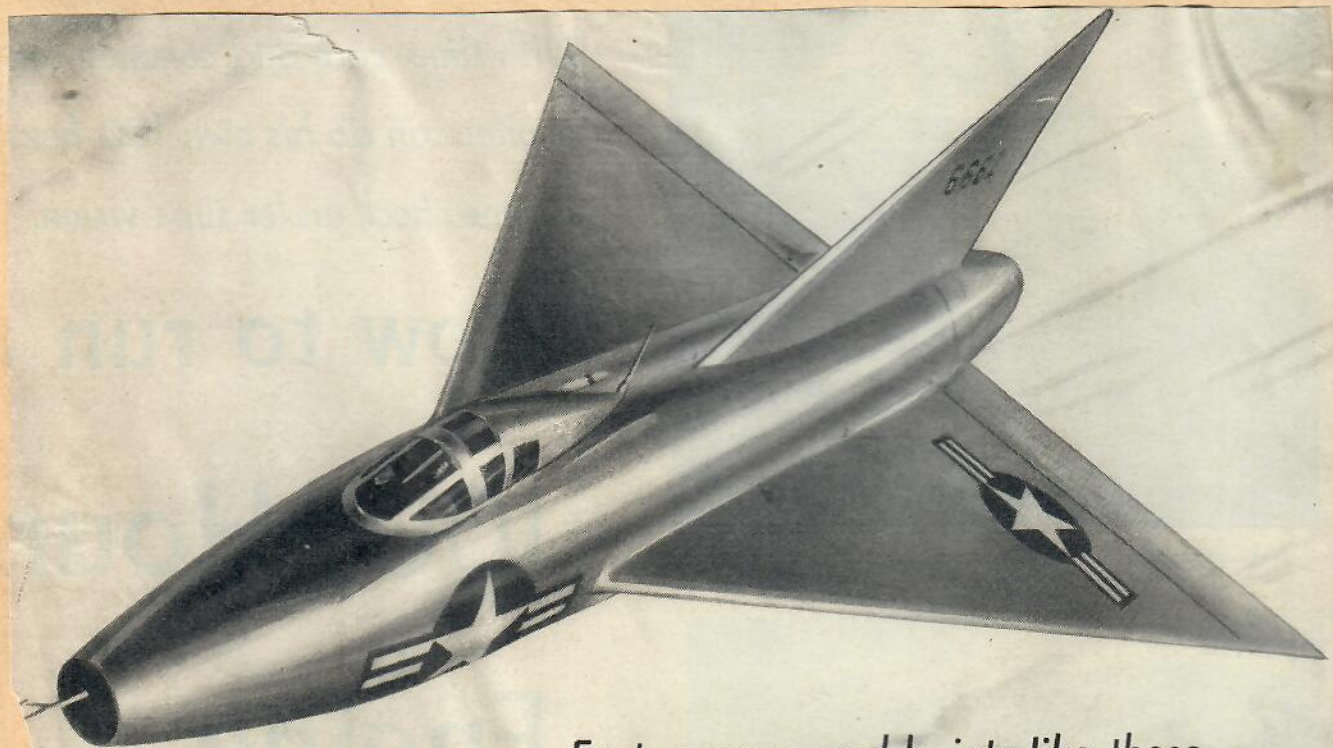


Atom Bomber

Ten engines on mammoth B-36D intercontinental A-bomber give top speed of 435 m.p.h. Plane grosses over 179 tons.

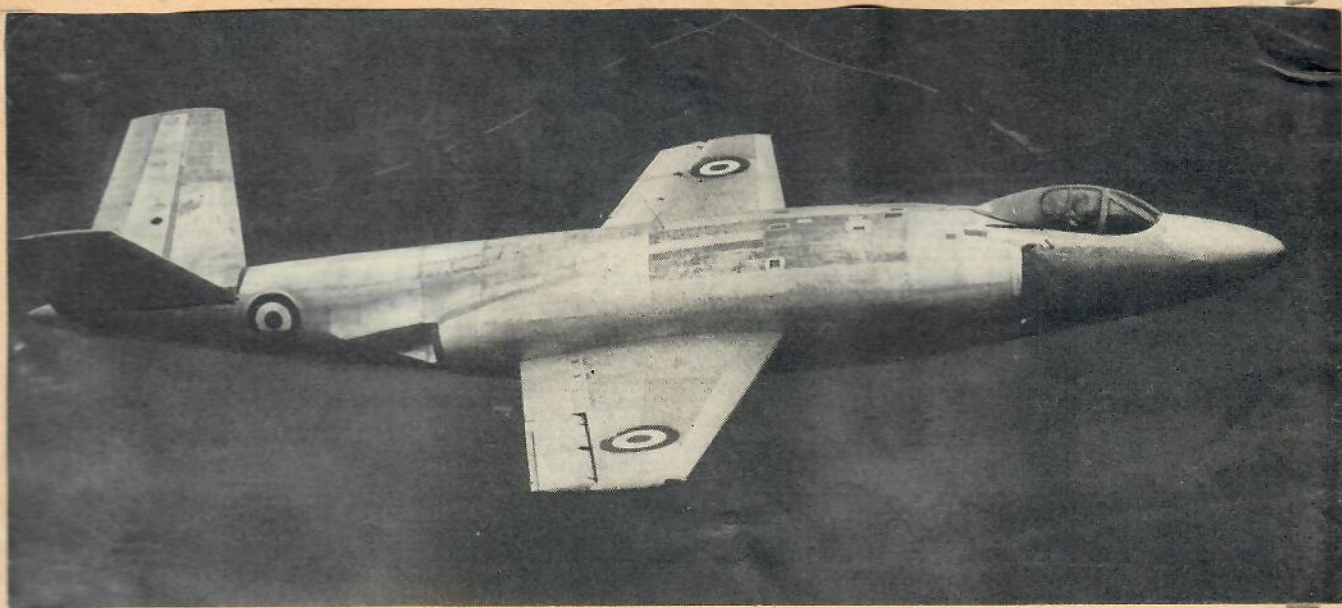


Spewing smoke and flame from an auxiliary rocket motor, the Air Force's new tactical guided missile, the *Matador*, streaks out over the Atlantic during a test. When the rocket bottle drops off power is supplied by a J-35 jet engine in the tail of the missile.

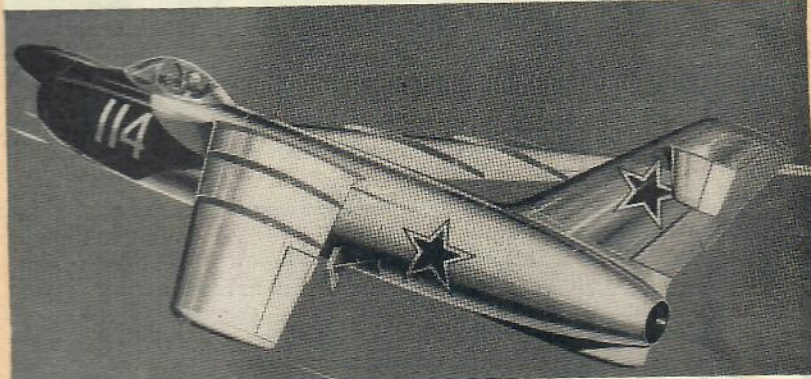


Fast, maneuverable jets like these would battle for air superiority in any war in the next few years.

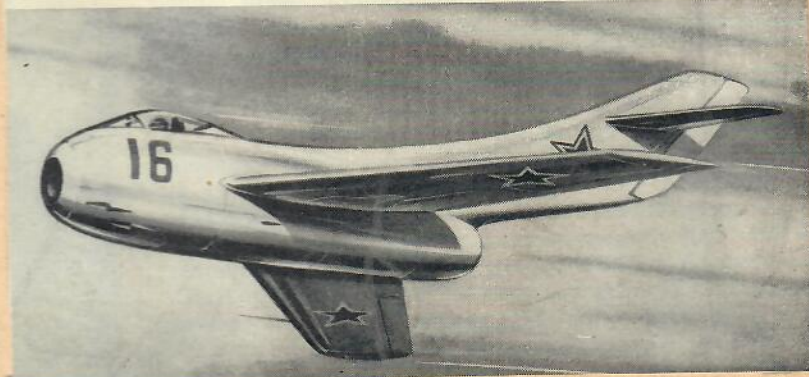
This Deltawing Convair F-92A is a research airplane but it forecasts configuration of new U.S. jet fighters soon to fly. Russia also is working on a supersonic Deltawing fighter, known as the Lippisch-designed P-13A, and Great Britain is testing two Deltawings.

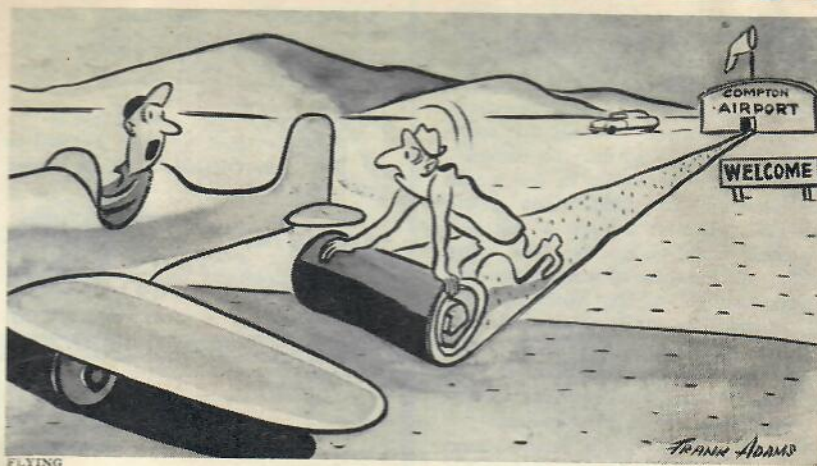


This sleek fighter, modified La-17, is another Red jet which may challenge our best aircraft. It has M-45 turbojet and an M-718 rocket engine.



This new, unidentified Red interceptor shows trend of Russian design. It has rocket motor installed above its axial turbojet at base of dorsal fin.



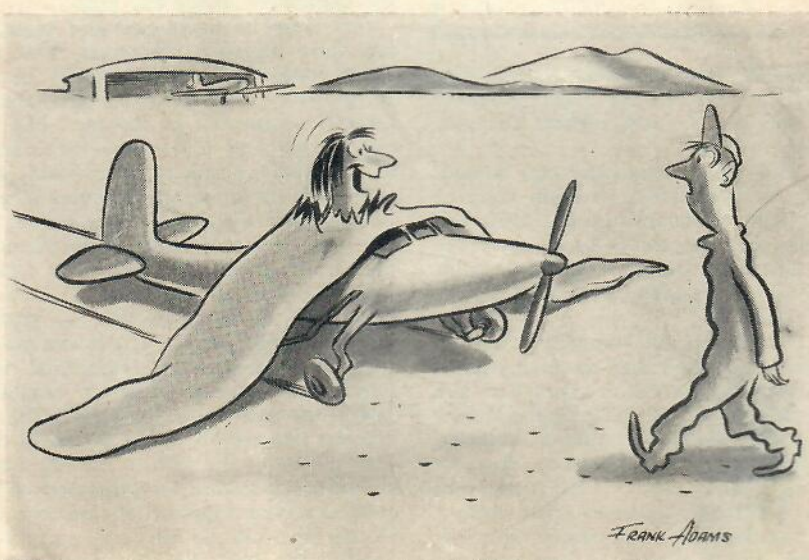


FLYING

"I just stopped to get a drink of water . . ."

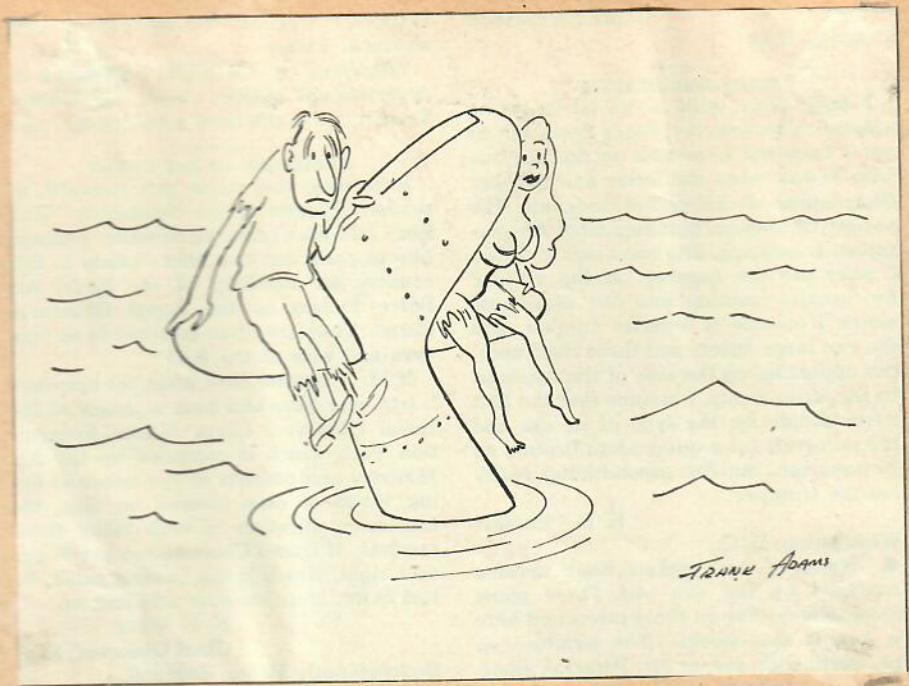


Another new RAF jet is the Supermarine Swift which has an Avon engine. Six factories are to produce this sleek fighter.



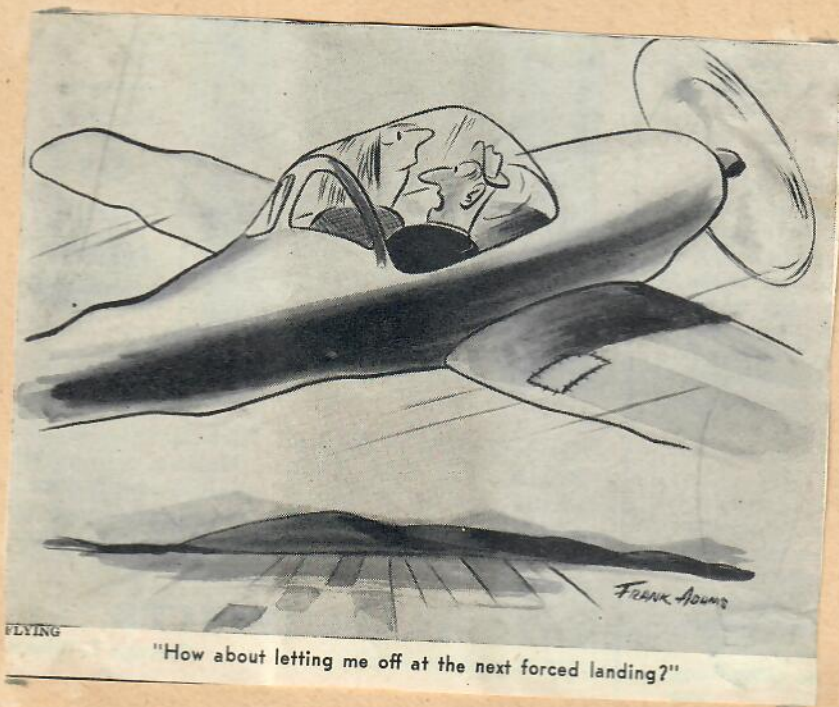
FLYING

"Bounced a little"





"It was getting awfully hot in here, sir!"



FLYING

"How about letting me off at the next forced landing?"



**DOYLE'S
Service Station**

STANDARD OIL
PRODUCTS
Phone 9081
On U. S. 131
Cedar Springs, Mich.

CLOSE COVER FOR SAFETY



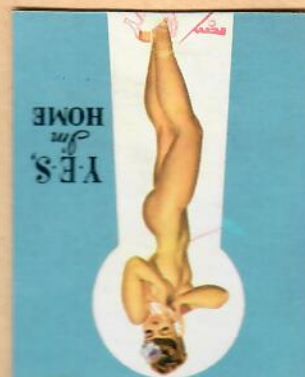
Does it still hurt?

**ALWAYS A FRIENDLY
WELCOME**

**PORTER'S
BILLIARDS**

RECREATION HALL
PUBLIC PHONE
Beer - Wine - Hot Dogs
Market Street
HINESVILLE, GA.

CLOSE COVER FOR SAFETY



SERVICE
Is What We Give

**O & L
MARKET**

GROCERIES, MEATS
and PRODUCE
Phone 4-5612
Clarksburg, W. Va.

CLOSE COVER FOR SAFETY



**YOU'VE TRIED THE REST
NOW Get the BEST**

**JEWELL CO-OP
ELEVATOR**

Co-Op Feeds and
Petroleum Products
Phone 74
JEWELL, IOWA

CLOSE COVER FOR SAFETY



On Tap

**THE
RED DOG**

PIONEERTOWN
CALIFORNIA

CLOSE COVER FOR SAFETY




**Always a friendly
WELCOME**

**PIONEER
BOWL**

BOWLING - POOL
BEER - LUNCH
SPANISH FOOD
PIONEERTOWN
CALIFORNIA

CLOSE COVER FOR SAFETY



**WE BAKE
OUR OWN
PIES**

PARKER CAFE
 JOSIE and REX
 Our Specialty
 HOME COOKED MEALS
 GREYBULL, WYOMING

CLOSE COVER BEFORE STRIKING

Room
 Dining
 Lounge
 Cocktail

**PLAZA
HOTEL**
 INDIO, CALIF.
 Phone 73445

CLOSE COVER BEFORE STRIKING



**COURTESY
FRIENDLY SERVICE
CLEANLINESS**

OUR PLEDGE:

SHELL

YUCCA VALLEY
 SKY CORRAL
 SHELL
 SUPER SERVICE
 Automotive & Aviation
 JULE BOLDIZSAR

CLOSE COVER BEFORE STRIKING MATCH



Dining & Dancing

**Mission
CAFE**
 BEST of FOODS
 and DRINKS
 Joe Garcia
 PROP.
 DEMING, NEW MEXICO

CLOSE COVER BEFORE STRIKING MATCH

*All Modern
CONVENIENCES*

**TOURIST
CABINS**

DIAL 3-7172

**GLENWOOD
COURTS**
 T. A. JACKSON
 Owner
 HIGHWAY 80-E
 EL PASO, TEXAS

CLOSE COVER BEFORE STRIKING MATCH

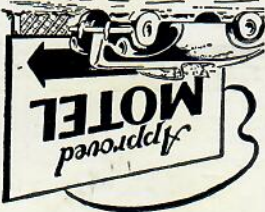
FISH FRY
 HOMEMADE PIES
 TASTY CHILI
 HOME COOKING

DIAL 2-1856

**THE
HERMANN'S**
 for
Fine Foods
 1733 CALUMET DRIVE
 SREBOYGAN, WISCONSIN

CLOSE COVER BEFORE STRIKING MATCH

All Conveniences



PHONE 5411

**MATTHEWS
MOTEL**

220 W. Main Street
BARSTOW, CALIF.

CLOSE COVER FOR SAFETY



Chessie
VISIT
OUR
BAR

Always a friendly
WELCOME

**STATE LINE
SERVICE HOTEL**

CAFE, BAR AND
CASINO

Cabins In Connection

East Line, Nevada
WENDOVER, UTAH

CLOSE COVER BEFORE STRIKING MATCH



NIGHT LUBRICATION

LANE MOTEL
And
STATION

Phone 750
122 W. SANTA FE
FLAGSTAFF, ARIZ.

CLOSE COVER BEFORE STRIKING MATCH



OPEN ALL NIGHT

**OUT WEST
CAFE**

GOOD FOOD

On Highway 66 & 89
Across From Depot
FLAGSTAFF, ARIZ.

CLOSE COVER FOR SAFETY

REASONABLE RATES

AIR COOLED

COMPLETELY MODERN

Phone 749-W

**VALLEY
MOTEL**

HWY. 70
SAFFORD, ARIZ.

CLOSE COVER BEFORE STRIKING

HIGHWAY-39
BUENA PARK, CALIF.



VISIT GHOST TOWN
AND OUR STEAK HOUSE

Phone ANAHEIM 2291

KNOTT'S BERRY FARM



BUENA PARK, CALIF.
for Chicken Dinners

CLOSE COVER BEFORE STRIKING MATCH

PROGRESSIVE
BANK IN A
PROGRESSIVE
COMMUNITY

**NORTHERN
WYOMING'S
LARGEST
BANK**

MEMBER F. D. I. C.

**BANK OF
COMMERCE**

Established 1893

SHERIDAN, WYO.

CLOSE COVER BEFORE STRIKING

