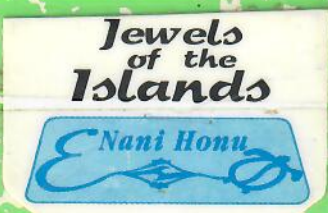


# MAUNA LANI 3 of 4 and Sea Life Park

3-14-06  
KAHALA SLP  
Releases "KALO"  
"KAPU"

2002-  
2006



BALAZS  
2002-2006

BALAZS  
286-289

alco<sup>®</sup> 2002-  
2006  
Composition Book

Name <sup>15th TID</sup> July 4, 2004 page  
School <sup>14th</sup> July 4, 2003 NL page  
Grade <sup>N=4</sup> ID/ST/PS = 2534, 25312 MT4  
SP6730 = 23459 MT5 22534  
Wide Ruled KAHALA = 11- -03  
9 3/4 x 7 1/2 in. 100 Sheets  
(24.76 x 19.05 cm)  
<sup>16th TID</sup> July 3-4, 2005 NL  
ST18 = 23542

Marine Turtle Research  
NMFS HONOLULU LAB  
2570 Dole Street  
Honolulu, HI 96822-2396

11-13-03 USCG SAT TAG N=2  
SLP Releases - 15 miles  
of S. Shore  
P. 56

I.D. 23176 23177 SPOT3  
I.D. 23542 ST18

1-5-06 TW/GB SAMPLED MAUNA LANI 7 P. 30

132



## July 4<sup>th</sup> Turtle Independence Day Celebration at Mauna Lani Resort

Sunday, July 3

**12 noon - 1:00pm**

**Honu Presentation**

This fun educational presentation by Sea Life Park is an opportunity for children to get an up close view of the honu. It's also a great photo opportunity for parents. Please meet at the Honu Garden.

**1:00 pm - 3:00 pm**

**Weighing & Tagging of the Honu**

Join us on the Mauna Lani Lanai as George Balazs of the Marine Turtle Research Program, National Marine Fisheries Service, and his team weigh, measure and tag the honu that will be released on July 4<sup>th</sup>. Learn more about the honu from everyone that nurtures, raises and monitors the honu throughout the year.

**5:00 pm - 7:00 pm**

**American Music Celebration**



The Hawaii Performing Arts presents "A Brass Bash in the Spirit of the Holiday". Enjoy rousing traditional favorites as well as new American music in a fun and festive concert at the Hale Hoaloha Pavilion.

Complimentary.

20-41-50

133

Monday, July 4

### 8:30 am - 11:30am Turtle Independence Day Celebration

The celebration begins at 8:30am with live entertainment and a carnival atmosphere complete with games, rock wall climbing, balloon animals and canoe rides for the kids. At 9:30am the turtles are gathered from the ponds and paraded down to the ocean where a special chant and 'Honu Hula' takes place prior to the release of the young turtles. And during the morning's festivities, good old-fashioned picnic fare is available, from hot dogs and hamburgers to Hawaii's favorite delight - shave ice. There will be exciting turtle displays to help educate everyone about the Hawaiian green turtle and how we can help in the preservation of the species.



Please contact the Concierge at ext. 24  
for additional information.

PJT  
4339 - SEC 32.7 cm 6/16/06  
"MAUNA LANI 7"

-----Original Message-----  
From: Robert A Rameyer [mailto:bob\_rameyer@usgs.gov]  
Sent: Friday, January 06, 2006 3:50 PM  
To: thierry\_work@usgs.gov  
Subject: Mauna Lani blood results 1-5-06

Thierry,

TO  
ML Book

ID	PCV	TS
YR01	38	4.8
YR02	22	2.0
YR03	34	3.6
YR04	34	4.8
YR05	22	2.4
YR06	22	2.2
YR07	25	3.0

3x 22 PCV? odds?

→ 901 = 32.9 cm SCL 6/16/06

→ 5190 = 40.3 cm SCL 6/16/06

134

3-14-06  
Release  
KAHALA

Revised 04/04/01

NMFS, HONOLULU LAB  
Marine Turtle Research  
2570 Dole Street  
Honolulu, HI 96822-2396

Named "Kapo" = Night

SEA TURTLE TAGGING FORM

ATSUKO KOJIMA  
小島 敦子

DATE FORM FILLED OUT 03, 14, 06

CAPTURE DATE, LOCATION AND METHOD:

THE KAHALA - CAPTIVE  
HOTEL SLP capture 03-14-06

Released  
10:30am  
2003 MARCH 3/14/06

PERSON RECORDING DATA: SM

TUMOR SCORE

0

ORAL TMRS EXT:  
YES OR NO

-

EMACIATION CODE

0

OLD TAGS:

4454457740 LHF  
4454064335 RHF

NEW TAGS:

RFL  
LFL

STRAIGHT CARAPACE - LENGTH:

56.7 cm

WIDTH: 49.0 cm

NOTCH LENGTH: 56.7 cm

DB: 0 L.O.

VB: 0 L.O.

CURVED CARAPACE LENGTH:

60.0 cm

WIDTH: 57.0 cm

HEAD WIDTH: 9.02 cm

AXIAL: 24.9 cm

LATERAL: 24.4 cm

PPS: YES OR NO OR NE N

SEX: Male, Female or Undetermined U

TAIL LENGTH: T ~~10.5~~ 10.5 cm

C 8.0 cm

RIGHT FRONT FLIPPER WIDTH:

9.3 cm

SAMPLES COLLECTED:

PLASTRON LENGTH: 45.4 cm

Yuka Takeuchi

WEIGHT: ~~63.0~~ 63.0 #

武内有加

Hayato Yonexama

DESCRIPTIVE REMARKS:

米山 敦人

PC lessened and healed  
Tail shortened  
MOTOYDOL "KAPO" on ~~2nd~~ 3rd L. lateral  
and 2nd R. lateral

135

3-14-06  
Release  
KALALA

Revised 04/04/01

NMFS, HONOLULU LAB  
Marine Turtle Research  
2570 Dole Street  
Honolulu, HI 96822-2396

"Kala" = Day  
Named -

SEA TURTLE TAGGING FORM

DATE FORM FILLED OUT 03/14/06

Released  
~ 1030am  
3/14/06

CAPTURE DATE, LOCATION AND METHOD:

THE KALALA CAPTIVE SLP 03/14/06  
HOTEL SM Bred 2003 HATCH H

PERSON RECORDING DATA:

TUMOR SCORE

0

ORAL TMRS EXT:

YES OR NO

-

EMACIATION CODE

0

OLD TAGS:

44521E535B LHF

44545B3822 RHF

NEW TAGS:

RFL  
LFL

STRAIGHT CARAPACE - LENGTH:

64.3 cm

WIDTH:

53.1 cm

NOTCH LENGTH:

63.9 cm

DB:

0 L.O.

VB:

0 L.O.

CURVED CARAPACE LENGTH:

69.5 cm

WIDTH:

60.5 cm

HEAD WIDTH:

9.4 cm

AXIAL:

27.1 cm

LATERAL:

26.6 cm

PPS: YES OR NO OR NE

N

SEX: Male, Female  
or Undetermined

U

TAIL LENGTH: T

15.5 cm

C

9.5 cm

RIGHT FRONT FLIPPER WIDTH:

10.6 cm

SAMPLES COLLECTED:

PLASTRON LENGTH:

51.0 cm

YUKA  
+  
HAYATO

WEIGHT:

86.0 #

DESCRIPTIVE REMARKS:

Mototool "KALA" on 3rd L. lateral  
and 2nd R. lateral



1-5-06

137

"MANNA CAWI 2"

Revised 04/04/01

NMFS, HONOLULU LAB  
Marine Turtle Research  
2570 Dole Street  
Honolulu, HI 96822-2396

SEA TURTLE TAGGING FORM

DATE FORM FILLED OUT

SLP

CAPTURE DATE, LOCATION AND METHOD:

hatch late Summer 2004

1-5-06 Manna Cawi Captive  
PERSON RECORDING DATA: Rebecca Wong

TUMOR SCORE

0

ORAL TMRS EXT:  
YES OR NO

—

EMACIATION CODE

0

OLD TAGS:

470A10290D  
no metal tags

NEW TAGS:

RFL

LFL

STRAIGHT CARAPACE - LENGTH:

28.2 cm

WIDTH:

cm

NOTCH LENGTH:

28.1 cm

DB:

L.O.

VB:

L.O.

CURVED CARAPACE LENGTH:

28.1 cm

WIDTH:

cm

HEAD WIDTH:

cm

AXIAL:

11.9 cm

LATERAL:

11.6 cm

PPS: YES OR NO OR NE

SEX: Male, Female  
or Undetermined

TAIL LENGTH: T

cm

C

cm

RIGHT FRONT FLIPPER WIDTH:

cm

SAMPLES COLLECTED:

PLASTRON LENGTH:

cm

Blood

WEIGHT:

7.2 lbs

DIAG

② RHF

DESCRIPTIVE REMARKS:

③ Right Tag Area

choanal Papillae 20% missing & healed

138

1-5-06

20-2-1

end 1-5-06

Revised 04/04/01

NMFS, HONOLULU LAB  
Marine Turtle Research  
2570 Dole Street  
Honolulu, HI 96822-2396

SEA TURTLE TAGGING FORM

DATE FORM FILLED OUT

CAPTURE DATE, LOCATION AND METHOD:

slp Hatch Late Summer 2004

1-5-06 MAUNA LANI Captive  
PERSON RECORDING DATA: Rebecca

TUMOR SCORE

[ ]

ORAL TMRS EXT:  
YES OR NO

[ ]

EMACIATION CODE

[ ]

OLD TAGS:

YR02  
missing Right metal  
470D134339

NEW TAGS:

RFL [ ]  
LFL [ ]  
[ ]  
[ ]  
[ ]

STRAIGHT CARAPACE - LENGTH:

27.4 cm

WIDTH: [ ] cm

NOTCH LENGTH: 27.2 cm

DB: [ ] L.O.

VB: [ ] L.O.

CURVED CARAPACE LENGTH:

[ ] cm

WIDTH: [ ] cm

HEAD WIDTH: [ ] cm

AXIAL: 11.7 cm

LATERAL: 11.7 cm

PPS: YES OR NO OR NE [ ]

SEX: Male, Female or Undetermined [ ]

TAIL LENGTH: T [ ] cm

C [ ] cm

RIGHT FRONT FLIPPER WIDTH: [ ] cm

SAMPLES COLLECTED:

PLASTRON LENGTH: [ ] cm

Blood  
DING

WEIGHT: 6.4/16g

① PHE

DESCRIPTIVE REMARKS:

③ Right tag lumpy area not tag

choanal Papillae 10% missing + heal



10  
Turtles shipped  
7/2 picked up by Mike

Mauna CANI "TURTLE INDEPENDENCE DAY 2003"

July 3, 03 <sup>Osborn and Jimmy</sup>

Waikoloa Shrimp & GB depart 9:15 am  
for Kona. Abolater - Avis car rental -

Drove to Waikoloa - walked to lagoon and  
saw turtles along edge. Very little C. v. seen  
seen in dolphin pens.

Fresh at Waikoloa shopping Mall.  
Drove down Kiholo road, but gate was  
closed at 2nd gate (possibly due to July 4th  
weekend). Drove to Mauna Kanu arriving  
2:00 pm checked in to rooms 504 & 505.

Prepared/unpacked at satellite attachment  
gear - Met Marc Rice and Jill, Marty Wismer.  
3 year olds (3) released on shore.

Picked 3 of two year olds (5 ST19's) for satellite  
tags. Also, one of the 3 year olds for  
SPOT3 tag (= 9 total). Tables set  
up and turtles in animal carriers -  
we proceeded to do the 3, ST19's  
first as a group. Elastomer first.  
Mototools 1, 2 & 4. "Keiki" with SPOT3  
no mototool. MT 4 was released from  
shore.

Did 3 layers of cloth and resin.  
The last layer was Castro gauze  
small piece of Keiki as anterior of Maxutter.

(140)

July 3, 03

4 hours out of 48 hours (2 during night & 2 during the day)

SPOT 3 attachment was harder due to PLASTIC "coating" WC had built on it. Magnet passed over it 7/4 about 1 pm, finished about 5 pm.

Dinner with Sandie Patton and her husband ERIC and her brother and girl friend.

4 Turtles kept in carriers <sup>BOX</sup> in Lanai of hotel room.

July 4  
2003  
FRIDAY

Up ~ 6 AM, sunrise - made a video of the day July 4<sup>th</sup>.

put 4 turtles into ponds to hydrate for a few hours. set up booth with Masc - 8:30 AM.

took turtles from pond "Grand procession" - 9:15 am using decorated golf cart

Suggestions: ① line up orderly for view by children only at first

② Involve more children in release - walking each one down.

③ Use a fitter, heavier that doesn't sag so that turtles can be seen by crowd.

④ Have your picture taken with the turtle -- like the Swim w/ Dolphins program

⑤ Announce sat tag releases. - Have an activity

(147)

Friday

14th

July 4, 2003

(6) Announce Bothers

SLP  
HRA  
NMFS

Speeches by Akaka, & GB

Turtle HOLA performed.

Each of 6 named turtles walked down

~ 130pm Motored offshore by Mr. Riddles  
3 w/ sat tags let go.

glossy seas. Turtles "spun" across  
the water's surface. "Jet propelled" -  
Attempting to see. All seemed to go  
south, in a Kapa direction.  
Do they inherently know they are  
in Pelagic <sup>because</sup> - can't see the  
bottom - scatter light/blue?

Departed ~ 4pm - dove into  
kikoh but gate locked again  
so continued straight, parked  
and walked along beach toward  
Dr. Bakken's. Small tube on right  
people swimming/bathing in it.  
We watched 3 turtles feeding close  
to rocks in very shallow water.  
Back to Honolulu Aoba Flight.

Released 12/1/04

See  
P. 104

143

SEA LIFE PARK HAWAII

HAWAIIAN GREEN SEA TURTLE *Chelonia mydas*

**RECEIVED FROM:** Minnesota Zoo  
**RECEIVED ON:** September 23, 2004  
**ARRIVAL WEIGHT:** 226 #'s / 103 kgs  
**NAME:** Three Dot  
**ACCESSION #:** 9254  
**HATCH DATE:** 7/96  
**LABELED:** not labeled  
**PIT TAG LHF:** 460729115C  
**PIT TAG RHF:** 4607440B69

AEGOS  
 ID  
 24194  
 ST 14

**ARRIVING CONDITION:** Visual exam appears within normal limits.

**BLOODWORK:** 9/28/04 CBC: Leukocytosis with a Heterophilia. Elevated Hematocrit. Chemistry Panel: Elevated CPK and Total Protein. Decreased BUN, Glucose, and Phosphorus.

10/29/04 CBC: Elevated Hct. Chemistry Panel: Elevated Total Protein, Globulin, and Sodium. Decreased BUN and Glucose.

11/26/04 CBC: Leukocytosis with a lymphocytosis, monocytosis, and eosinophilia. Elevated Hct.

**CURRENT CONDITION:** Activity appears normal. Inappetitant until 11/20/04.

**ASSESSMENT BY NMFS:** Pseudopenis extended. Active and jumpy. Male - long skinny tail; seems longer than it should be.

**FUTURE DISPOSITION:** Release.

Christie Hicks D.V.M.

SEA LIFE PARK HAWAII

HAWAIIAN GREEN SEA TURTLE *Chelonia mydas*

RECEIVED FROM: Minnesota Zoo  
RECEIVED ON: September 23, 2004  
ARRIVAL WEIGHT: 210 #'s / 96 kgs  
NAME: Two Dot  
ACCESSION #: 9255  
HATCH DATE: 7/96  
LABELED: not labeled  
PIT TAG LHF: not tagged  
PIT TAG RHF: not tagged

ARRIVING CONDITION: Visual exam appears within normal limits, however, appears more buoyant posteriorly.

BLOODWORK: CBC: Heterophilia / Lymphopenia.  
Chemistry Panel: Elevated CPK and LDH. Decreased BUN, Glucose, and Phosphorus.

CURRENT CONDITION: Activity is normal. Appetite consists of some veggies and pellets.

ASSESSMENT BY NMFS: Fat over hind flippers.  
Active/nervous/jumpy.

FUTURE DISPOSITION: Retain to add to our collection.

Christie Hicks D.V.M.

**SEA LIFE PARK HAWAII**

**HAWAIIAN GREEN SEA TURTLE *Chelonia mydas***

**RECEIVED FROM:** Columbus Zoo  
**RECEIVED ON:** October 13, 2004  
**ARRIVAL WEIGHT:** 172 #'s / 78 kgs  
**NAME:** Maui  
**ACCESSION #:** 983001  
**HATCH DATE:** January 18, 1998  
**LABELED:**  
**PIT TAG LHF:**  
**PIT TAG RHF:**

**ARRIVING CONDITION:** Visual exam appears within normal limits.

**BLOODWORK:** CBC: Appears normal. Chemistry Panel:  
Elevated CPK and LDH. Decreased ALP, BUN, and Glucose.

**CURRENT CONDITION:** Appetite and activity appear normal.

**ASSESSMENT BY NMFS:**

**FUTURE DISPOSITION:** Retain to add to our collection.

Christie Hicks D.V.M.

# Ripley's — Believe It or Not!

Dist. by United Feature Syndicate, Inc.

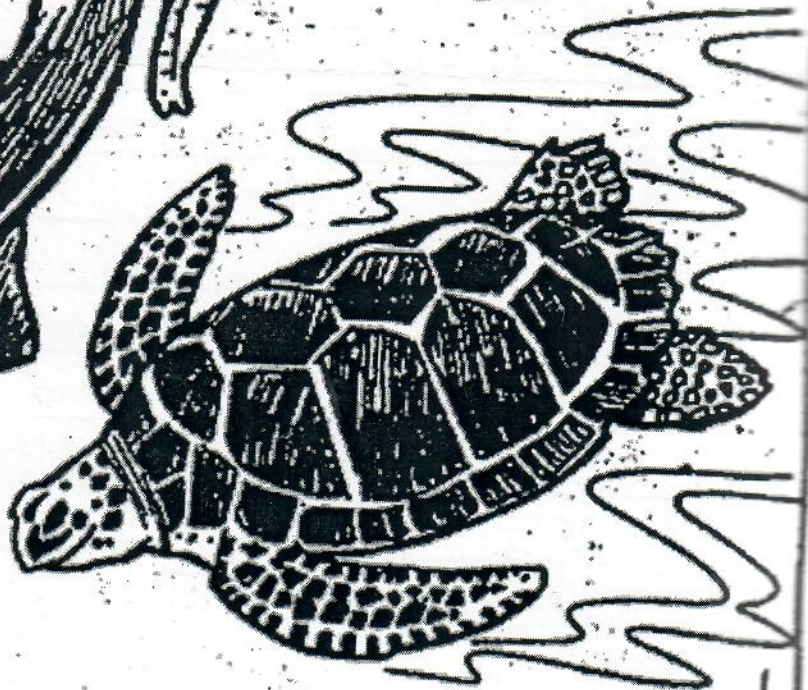
www.comics.com

© 2003 Ripley Entertainment Inc.



**ELEPHANTS**  
in Delhi,  
India, ARE FITTED  
WITH REAR-END  
REFLECTORS  
WHILE WORKING  
IN THE STREETS  
AT NIGHT!

Believe It or Not!  
WORKING ELEPHANTS  
in nearby Kerala  
WILL ENJOY FULL  
RETIREMENT  
BENEFITS AT AGE  
65!



9-16

Believe It or Not! THE MARINE TURTLE RESEARCH PROGRAM in Honolulu, Hawaii, HAS TRACKED A JUVENILE GREEN TURTLE THAT TRAVELED 3,000 MILES IN EIGHT MONTHS AND RETURNED TO THE SAME AREA WHERE IT WAS FIRST RELEASED!

Date: Sat, 23 Oct 2004 18:09:37 EDT  
From: ANIMALPROGRAMS2@aol.com  
To: gbalazs@honlab.nmfs.hawaii.edu, PhinneyPin@aol.com, SLPMOSBORN@aol.com,  
pawloski@hawaii.rr.com, ANIMALPROGRAMS2@aol.com  
Subject: Turtle Weights

[ Part 1, Text/PLAIN 10 lines. ]  
[ Unable to print this part. ]

Mr. Balazs,

Listed below are the weights obtained 10/22/04.

Santiago 92 pounds  
Bartolomi 106 pounds  
Triton 140 pounds  
Neptune 140 pounds

Sincerely yours,  
Christie

*S. J. ...*

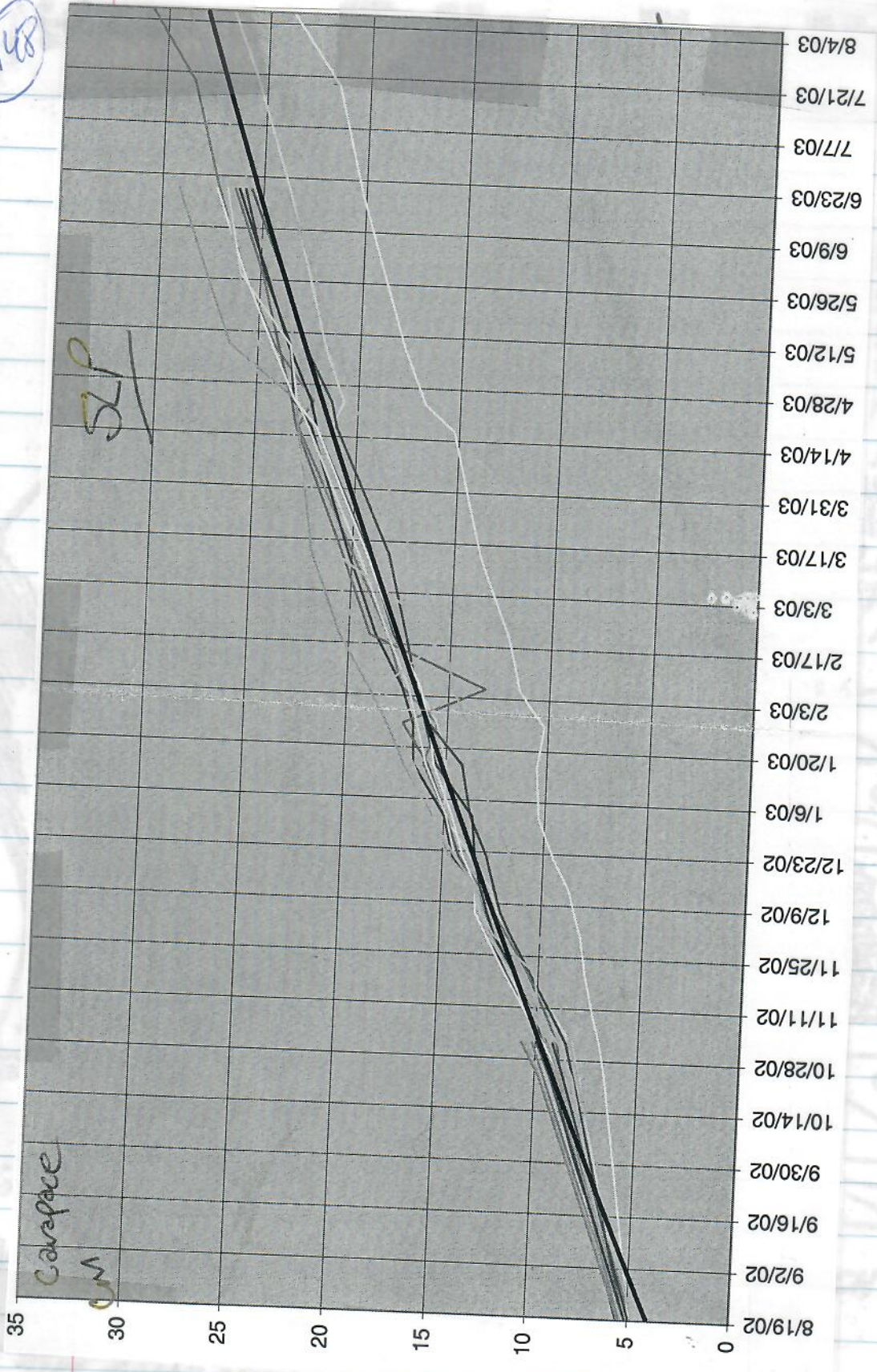
*MAINLAND  
Return  
Releases*

*10/22/04 - Released - Shirk cover across from SLP  
Bism*

*JAT TAG ID  
5118 12/48*



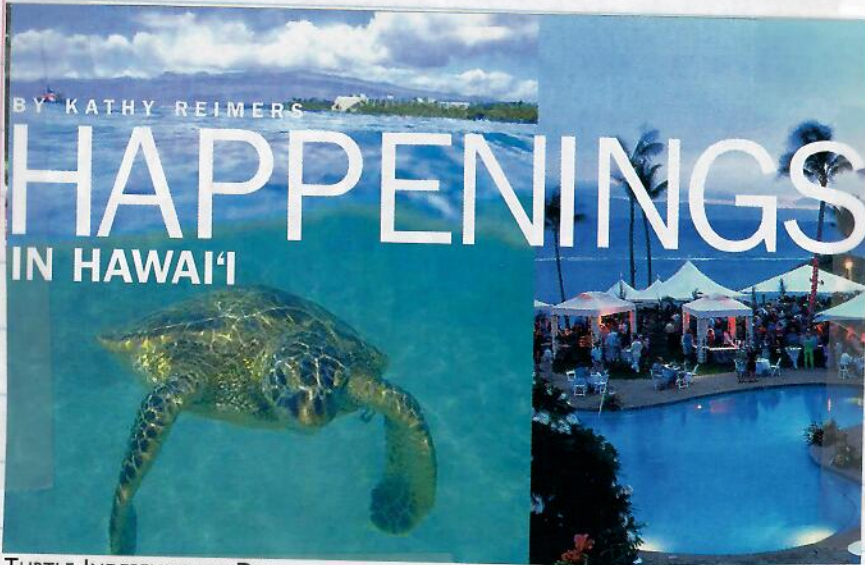
148



Carapace

SLP

150



TURTLE INDEPENDENCE DAY

### TURTLE FREEDOM

JULY 4

This unique Fourth of July event features flags, food, music, a parade, balloon animals, face painting—and young *honu* (Hawaiian green turtles). The *honu*, raised in salt ponds until they are old enough to survive on their own, are released into the ocean on **Turtle Independence Day**. Mauna Lani Resort, Big Island. Free. 885-6622.

*It is our privilege to welcome your return to  
The Mauna Lani Bay Hotel and Bungalows.*

*We hope that the spiritual energy of our resort  
and its rich past will renew  
and embrace you during your stay.*



Kurt Matsumoto  
Managing Director

152

Report for Spot tag 02S3003 on 16-Jun-2003 at 12:26:11  
Software: 3.06

Spot belongs to:  
National Marine Fisheries Service  
2570 Dole St.  
Honolulu, HI 96822-2396

Standard Argos PTT number: 23177 or 06A248 Hex.  
transmitting with fast repetition rate of 45.00 seconds  
and slow repetition rate of 90.00 seconds.  
It checks for dry (to start transmitting) every 0.25 seconds  
and switches to its slow repetition rate after 08 successive dry transmissions  
Transmissions will be suspended after being dry for never hours,  
and resume after being wet for 06 seconds.

Total Transmits to date = 17  
Maximum accumulating transmissions per day = 300

Transmit on these hours:

4, 8, 17, 21,

Transmit on these days:

1, 3, 5, 7, 9, 11, 13, 15, 17, 19, 21, 23, 25, 27, 29, 31

Transmit on these months:

Jan - Dec

Time at temperature Histograms are not collected.

---

until they are old enough to survive on their own, are  
released into the ocean. Turtle Independence Day  
Mauna Lani Resort, Big Island, P.O. Box 495-6011

Report for Spot tag 02S3000 on 16-Jun-2003 at 12:22:03  
Software: 3.06

Spot belongs to:  
National Marine Fisheries Service  
2570 Dole St.  
Honolulu, HI 96822-2396

Standard Argos PTT number: 23459 or 06E8E6 Hex.  
transmitting with fast repetition rate of 46.00 seconds  
and slow repetition rate of 91.00 seconds.  
It checks for dry (to start transmitting) every 0.25 seconds  
and switches to its slow repetition rate after 08 successive dry transmissions  
Transmissions will suspended after being dry for never hours,  
and resume after being wet for 06 seconds.

Total Transmits to date = 13  
Maximum accumulating transmissions per day = 300

Transmit on these hours:  
4, 8, 17, 21,  
Transmit on these days:  
1, 3, 5, 7, 9, 11, 13, 15, 17, 19, 21, 23, 25, 27, 29, 31  
Transmit on these months:  
Jan - Dec

Time at temperature Histograms are not collected.

154

Date: Tue, 01 Jul 2003 12:23:42 -0700  
From: Denise Parker <Denise.Parker@noaa.gov>  
To: ghb <gbalazs@honlab.nmfs.hawaii.edu>  
Subject: [Fwd: Set up of SPOT3's]

I'm resending my message to you written June 18 (see below). After talking w/ Dan this information is still correct. Either the 3rd or 4th would work, but I would suggest starting it on the 3rd (if you do this I would leave it on) and we should see positions show up in the ADS on the 4th. BUT (and this is my fault for not verifying the need when I was programming) it will not transmit on the 4th, the next day it will transmit is the 5th (odd days only), so if you switch on the day of the 4th we won't get any data until the 5th.

Note: Melinda's explanation for programming for the SPOT3 is the new version of software they are putting out. The software they sent you would only allow me to pick calendar days and months to transmit, but the same calendar days would transmit each month. In the new version, you can specify which days on which month you want to transmit (there will be 366 boxes to check)

Denise Parker wrote:

>  
> This is correct, If you start on the 4th the transmitter will not send  
> out transmissions until  
> the 5th (you'll just see 3 or 4 flashes of LCD when you turn on).  
>  
> Before I set it up they were programed to transmit all hours on all  
> days, so you are correct in thinking that if a SPOT3 accidentally got  
> turned on direct from factory it would be draining battery down  
> relatively fast (e.g. they are set to send out 500 transmissions/day  
> every day). Unfortunately w/ Argos we'd have a 24-hr delay before we  
> realized it was on.

> ----- Original Message -----

> From: "George H. Balazs" <gbalazs@honlab.nmfs.hawaii.edu>  
> Date: Wednesday, June 18, 2003 1:13 am  
> Subject: Re: Set up of SPOT3's

>  
> > so no matter when I turn it on, when the turtle is released on the  
> > a.m. of the 4th, no transmissions will happen until the 5th?  
> > Correct? Note  
> > I'll be attaching on the afternoon of the 3rd. And at say 945pm I turn  
> > it on. At 10pm I hear beep and beep every 45seconds. Then I turn  
> > it off  
> > (with magnet, watch for flashers). So, what if I turn it on 945pm and  
> > NOTHING happens at 10pm? What do I do, take it off the turtle and  
> > don't use it? That would be an embarassment. Maybe better to NOT  
> > test it.  
> > Just do it go for it-- turn it on  
> > a.m. of the 4th just before release- and hope of the best!  
> > Furthr advice appreciated.

> >  
> > PS please tell me why it beep beep when I passed the magnet over it  
> > before you set it up. Would it have kept on beeping "on"?  
> > On Mon, 16 Jun 2003, Denise Parker  
> > wrote:

> >  
> > > Aloha George -  
> > > These should be sent off today, Priority Fedex so you should recieve

Date: Mon, 16 Jun 2003 13:31:30 -0700  
From: Denise Parker <Denise.Parker@noaa.gov>  
To: ghb <gbalazs@honlab.nmfs.hawaii.edu>  
Subject: Set up of SPOT3's

Aloha George -

These should be sent off today, Priority Fedex so you should receive tomorrow.

I set these up so they would transmit every 2 days (for the SPOT3's this means every odd day of the month, e.g. 1st, 3rd, 5th, etc) and 4 hours on - GMT - 4, 8, 17, 21 (or 1800 (6pm), 2200 (10 pm), 0700, and 1100 - Hawaii time). Note: I tested with receiver today - and confirmed my suspicion that after initial LCD blinks when the transmitter turns on, since today is an even day (the 16th) it did not transmit anything (register on receiver). I believe this will also be the case if I had turned it on yesterday at an hour that was not specified for the transmitter to transmit.

Why this long explanation.. Mainly if you are going to want to test to make sure your transmitter is on (the one you'll be putting on at Mauna Lani) you'll have to turn it on with magnet sometime on the 3rd before 10pm and then use receiver to test around 10pm. (we'll have at least a day's delay in being able to tell if it is sending anything to Argos.) Sorry I didn't think this all over previously

Denise

[ Part 2, "Card for Denise Parker" Text/X-VCARD (Name: ]  
[ "Denise.Parker.vcf") 12 lines. ]  
[ Unable to print this part. ]

150

Date: Wed, 18 Jun 2003 08:59:53 -0700  
From: Denise Parker <Denise.Parker@noaa.gov>  
To: George H. Balazs <gbalazs@honlab.nmfs.hawaii.edu>  
Subject: Re: Set up of SPOT3's

This is correct, the transmitter will not send out transmissions until the 5th (you'll just see 3 or 4 flashes of LCD when you turn on). I think turning on just before release on 4th should be ok. better than other scenerio :)..

Before I set it up they were programed to transmit all hours on all days, so you are correct in thinking that if a SPOT3 accidentally got turned on direct from factory it would be draining battery down relatively fast (e.g. they are set to send out 500 transmissions/day every day). Unfortunately w/ Argos we'd have a 24-hr delay before we realized it was on.

----- Original Message -----

From: "George H. Balazs" <gbalazs@honlab.nmfs.hawaii.edu>  
Date: Wednesday, June 18, 2003 1:13 am  
Subject: Re: Set up of SPOT3's

- > so no matter when I turn it on, when the turtle is released on the
- > a.m. of the 4th, no transmissions will happen until the 5th?
- > Correct? Note
- > I'll be attaching on the afternoon of the 3rd. And at say 945pm I turn
- > it on. At 10pm I hear beep and beep every 45seconds. Then I turn
- > it off
- > (with magnet, watch for flashers). So, what if I turn it on 945pm and
- > NOTHING happens at 10pm? What do I do, take it off the turtle and
- > don't use it? That would be an embarassment. Maybe better to NOT
- > test it.
- > Just do it go for it-- turn it on
- > a.m. of the 4th just before release- and hope of the best!
- > Furthr advice appreciated.
- >
- > PS please tell me why it beep beep when I passed the magnet over it
- > before you set it up. Would it have kept on beeping "on"?
- > On Mon, 16 Jun 2003, Denise Parker
- > wrote:
- >
- > > Aloha George -
- > > These should be sent off today, Priority Fedex so you should recieve
- > > tomorrow.
- > > I set these up so they would transmit every 2 days (for the
- > > SPOT3's this
- > > means every odd day of the month, e.g. 1st, 3rd, 5th, etc) and 4
- > > hours> on - GMT - 4, 8, 17, 21 (or 1800 (6pm), 2200 (10 pm),
- > > 0700, and 1100 -
- > > Hawaii time). Note: I tested with reciever today - and
- > > confirmed my
- > > suspicion that after initial LCD blinks when the transmitter
- > > turns on,
- > > since today is an even day (the 16th) it did not transmit anything
- > > (register on reciever). I believe this will also be the case if
- > > I had
- > > turned it on yesterday at an hour that was not specified for the
- > > transmitter to transmit.
- > > Why this long explanation.. Mainly if you are going to want to
- > > test to
- > > make sure your transmitter is on (the one you'll be putting on
- > > at Mauna
- > > Lani) you'll have to turn it on with magnet sometime on the 3rd
- > > before> 10pm and then use receiver to test around 10pm. (we'll
- > > have at least a
- > > day's delay in being able to tell if it is sending anything to
- > > Argos.)> Sorry I didn't think this all over previously
- > > Denise
- >
- >



\*\*\*\*\*  
\* George H. Balazs, Leader \*  
\* Marine Turtle Research Program \*  
\* National Marine Fisheries Service \*  
\* Pacific Islands Fisheries Science Center \*  
\* Honolulu Laboratory \*  
\* 2570 Dole Street \*  
\* Honolulu, Hawaii 96822-2396 USA \*  
\* Tel: (808) 983-5733 \*  
\* Fax: (808) 983-2902 \*  
\* gbalazs@honlab.nmfs.hawaii.edu \*  
\*\*\*\*\*

Refused

Send photos  
SPOT3  
TO  
Denise  
+ sardi  
4 or 94

"Fire in the Turtle House: The Green Sea Turtle and the Fate of the Ocean"  
<<http://www.publicaffairsbooks.com/books/fire.html>>

----- Forwarded message -----  
Date: Tue, 10 Jun 2003 12:17:35 -0700  
From: Denise Parker <Denise.Parker@noaa.gov>  
To: George H. Balazs <gbalazs@honlab.nmfs.hawaii.edu>  
Subject: SPOT3 programming

Total transmission for SPOT3 are 20-25,000, if it ran constantly at surface (at 300 transmission/day - our average setup we need to have at least this many to get at least one good position) it would last approximately 66-83 days.

With an every other day transmission schedule and transmitting only 2-3 hours a day we might have it last as long as 166-208 days (but most-likely it will be something in between the 2 estimates).

Attached also is an overpass schedule for Maui which is close enough to Big Island to get idea of satellite coverage - I've included all satellites Argos incorporates in their multisatellite coverage. We should have collection an hour or 2 in morning and another hour or so in afternoon/evening?

"George H. Balazs" wrote:

- >
- > Also, I'll only need one SPOT3 for the July 3-4 event. One needs to be
- > programmed at earliest convenience so I have it here in case things are
- > "early" for you. I need a recommendation on how much we should have it
- > transmit. How many transmissions do the company say it should do running
- > constant? How about something like 2-3 hours a day every other 24 hours?
- > Theoretically, if turtle is at surface all the time, how long should it
- > transmit with something like that?

198

SAMIN

NOAA, NATIONAL MARINE FISHERIES SERVICE  
Pacific Islands Fisheries Science Center  
Marine Turtle Research Program  
2570 Dole Street  
Honolulu, Hawaii 96822-2396

JUN 07 2007

SEA TURTLE NECROPSY/TUMOR FORM

DATE FORM FILLED OUT: 6/4/07

21° 34.955' N  
158° 41.391' W

NECROPSY DATE:

GPS entered post-necropsy?

CONTACT: Rose Kaneakua	MTRP ID DATE: 6/4/07 B	LOCATION: Mokuleia Beach Park, see GPS Above Oahu
PERSON RECORDING DATA: MC   DM		NECROPSY BY:

DESCRIPTIVE REMARKS: Live turtle was found on shore in the wave wash with caudal end buried in the sand. Taken to MAC, examined by Dr. Morris who said it should go to KRF for further eval. Taken to A2 6/4/07 by DM/MC. Taken to KRF 6/5/07 by GS/MC.

NECROPSY:  
Decomposition: Fresh Mild Moderate Advanced  
Body Condition: Excellent Good Fair Poor  
GIT Fill: % Crop Fill %

PRE-NECROPSY:

- wht cord-line algae on carapace

EU? N Y cc's Time:

Cause of Stranding:

TUMOR SCORE:		TAGS: 422 F203 F56 - LHF	SPECIES: CM
ORAL TUMORS EXT: YES OR NO	Y	423 95 E535 B3 - RHF	
EMACIATION:	2	4692 - LFF meta tag	SEX: Male, Female, or Undetermined:
		MT#	
STRAIGHT CARAPACE LENGTH:	45.6	NOTCH LENGTH:	45.6
WIDTH:	37.3	DB:	N
CURVED CARAPACE LENGTH:	50.0	VB:	N
WIDTH:	44.5	HEAD WIDTH:	8.1
PLASTRON LENGTH:	38.0	RIGHT FRONT FLIPPER WIDTH:	7.4
WEIGHT:	29.4	TAIL LENGTH: T: 8.5 C: 5.0	
		AXIAL: -	16.0 PPS (Y/N): N
		LATERAL: 16.0	14.4
			11.7

see p. 104

6/14/05

w/ Capt'n Bruce Sautz Charters  
1258-4558

located by Kevin Winchester

PADI MSDT 162401

#927-0904

in a small cave located by the  
2 arches.

~~att~~ # aquadventure@yahoo.com  
Email.

- also seen turtles resting in that cave
- seen Ikaika in that area, recently w/o transmitter
- found 7-10 days ago,

Small cave



2 arches

30'

main cave  
arch

sand

By Cody

Makaha beach



Kevin Winchester  
1553 Pele St. Apt. C  
Honolulu, HI 96813

160

**TURTLE INDEPENDENCE DAY**  
**CELEBRATION AT MAUNA LANI**  
**JULY 4, 2003**



At Mauna Lani Bay the 4<sup>th</sup> of July is a fun celebration for the entire family. But the real stars of the day are the *honu* (Hawaiian green turtles). The juvenile *honu* from Sea Life Park are raised in the saltwater ponds at Mauna Lani, where they are cared for until they grow to a size and weight deemed appropriate for their release into the wild. This release occurs every July 4<sup>th</sup>, Turtle Independence Day at Mauna Lani.

**Thursday, July 3rd** 12:30 pm at the Honu Garden

A day before the release, children are invited to our 'Keiki Aloha Turtle Presentation.' It's an opportunity for children to get up close to the *honu* and learn more about them. It's also a great photo opportunity for parents.

**Friday, July 4th** 8:30 am - 11:30 am

The celebration begins at 8:30 a.m. with live entertainment and a carnival atmosphere complete with games, rock wall climbing, face painting, balloon animals and canoe rides for the kids. At 9:30 am the turtles are gathered from the ponds and are paraded down to the ocean where a



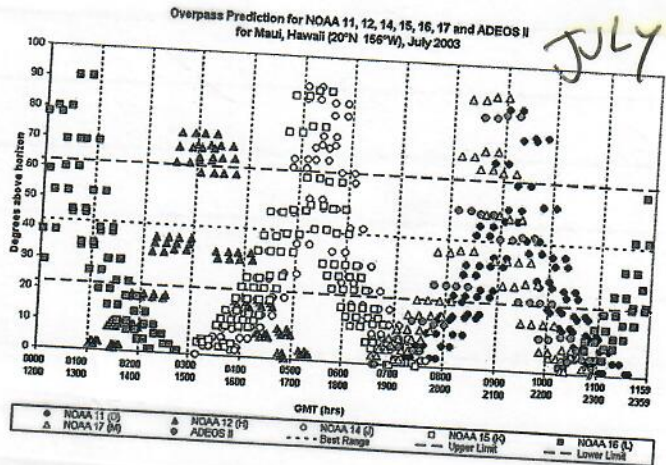
special chant and *honu hula* takes place prior to the release of the young turtles. And during the morning's festivities, good old-fashioned picnic fare is available, from hot dogs and hamburgers, cotton candy and Malasadas to Hawaii's favorite, delight shave ice.

Later in the day join us on the beach at 6:00 pm as Master Kumu Hula, John Ka'imikaua and his Halau, Kukuna 'okala will present traditional Hawaiian hulas until sunset.

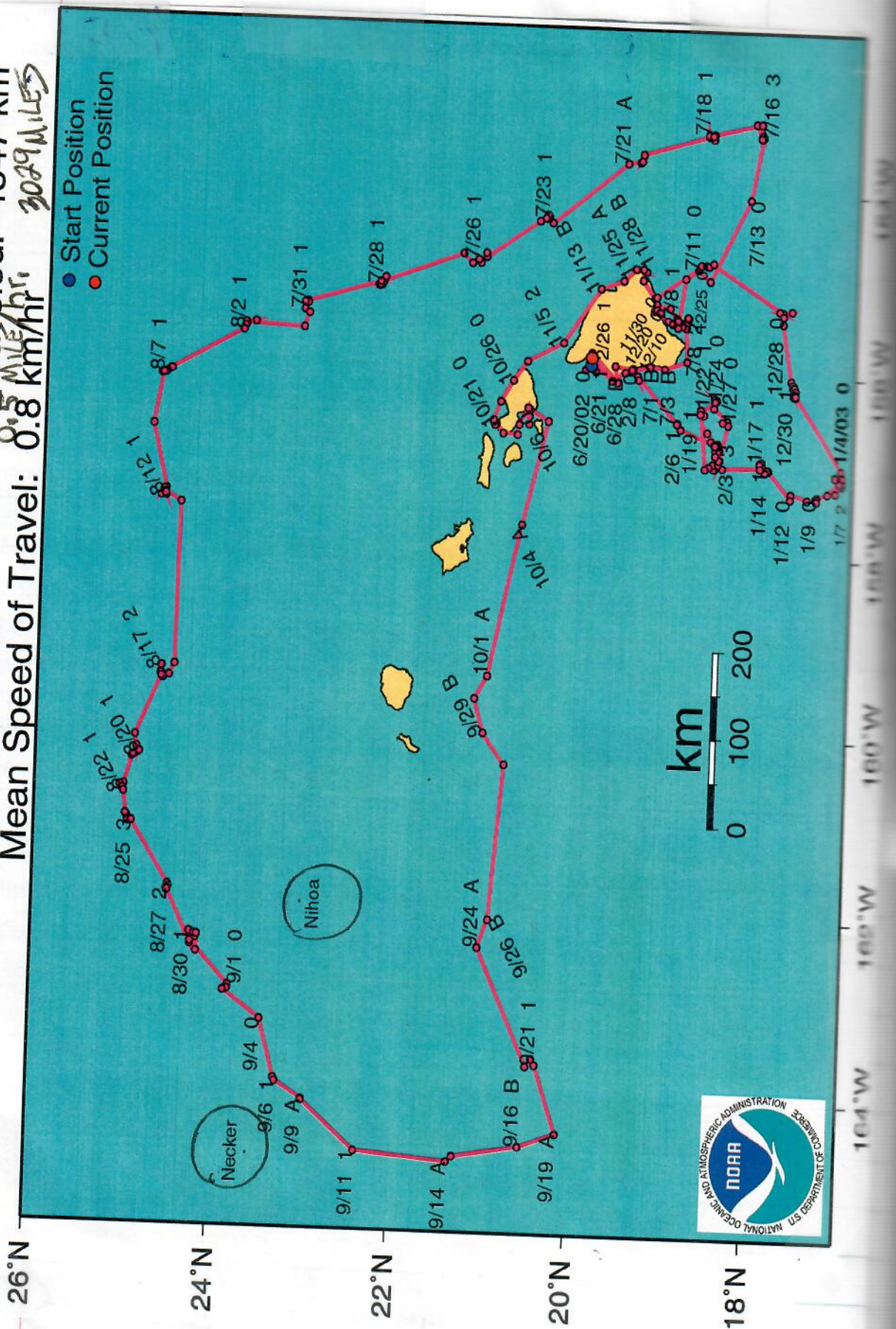
Please contact the Concierge at 885-6622 ext. 24 for additional information.

**MAUNA LANI RESORT**  
 MAUNA LANI BAY HOTEL & BUNGALOWS  
 FRANCIS H. I'I BROWN GOLF COURSES  
 MAUNA LANI SPA

JULY 2003



2002-2003 Movement of Mauna Lani Juvenile Green Turtle 22270  
 Duty Cycle: 12 hr on, 48 hr off SCL: 45.5 cm *28 inches*  
 Days Transmitting: 265 days Distance Traveled: 4847 km  
 Mean Speed of Travel:  $0.5 \frac{\text{MILE}}{\text{hr}}$  *3029 MILES*



14th TID Released 1030pm 7/4/03  
from Shore Mena Lani

163

Revised 04/04/01

NMFS, HONOLULU LAB  
Marine Turtle Research  
2570 Dole Street  
Honolulu, HI 96822-2396

MOTO TOOL 7  
3rd lateral  
L+R  
Renewed

①

SEA TURTLE TAGGING FORM

DATE FORM FILLED OUT 6/9/03

CAPTURE DATE, LOCATION AND METHOD:

6/9/03, Mena Lani Pond CAPTIVE  
PERSON RECORDING DATA: Jill Hand capture

TUMOR SCORE

∅

ORAL TMRS EXT:  
YES OR NO

—

EMACIATION CODE

∅

OLD TAGS:

422E3A2B0A

42374A3360

NEW TAGS:

RFL None

LFL

STRAIGHT CARAPACE - LENGTH:

42.3 cm

WIDTH: 31.9 cm

NOTCH LENGTH:

42.1 cm

DB: ∅ L.O.

VB: ∅ L.O.

CURVED CARAPACE LENGTH:

45 cm

WIDTH: 37 cm

HEAD WIDTH:

6.9 cm

AXIAL: 17.0 cm

LATERAL: 14.7 cm

PPS: YES OR NO OR NE

yes

SEX: Male, Female  
or Undetermined

U

TAIL LENGTH: T

7.5 cm

C 4.5 cm

SAMPLES COLLECTED:

RIGHT FRONT FLIPPER WIDTH:

6.7 cm

PLASTRON LENGTH:

33.5 cm

WEIGHT:

21.5 #

Glucose GB 72  
MR 82

DESCRIPTIVE REMARKS:

blood from neck to Dr Morris

"ST-19 available"

George

Mouth: clean

to two 900g bags tissue  
from Dr Morris

Released from shoe 7/4/03  
Māhina Lani

Revised 04/04/01

NMFS, HONOLULU LAB  
Marine Turtle Research  
2570 Dole Street  
Honolulu, HI 96822-2396

3rd later...  
L/R #9  
moto 9

② 14TH

SEA TURTLE TAGGING FORM

Renewed

DATE FORM FILLED OUT 6, 9, 03

CAPTURE DATE, LOCATION AND METHOD:

6-9-03, Māhina Lani pond, hand capture  
captive

PERSON RECORDING DATA: Jill Q

TUMOR SCORE

0

ORAL TMRS EXT:  
YES OR NO

-

EMACIATION CODE

0

OLD TAGS:

42346E262F  
423257190A

NEW TAGS:

RFL none  
LFL

STRAIGHT CARAPACE - LENGTH:

42.1 cm

WIDTH: 32.1 cm

NOTCH LENGTH:

41.9 cm

DB: 0 L.O.

VB: 0 L.O.

CURVED CARAPACE LENGTH:

45.5 cm

WIDTH: 37.5 cm

HEAD WIDTH:

7.1 cm

AXIAL: 17.4 cm

LATERAL: 17.0 cm

PPS: YES OR NO OR NE

yes

SEX: Male, Female  
or Undetermined

U

TAIL LENGTH: T

10 cm

C 6 cm

RIGHT FRONT FLIPPER WIDTH:

7.6 cm

SAMPLES COLLECTED:

blood from neck

PLASTRON LENGTH:

32.4 cm

glucose GB 69  
MR 69

WEIGHT:

22 lbs #

To DR. MORRIS

DESCRIPTIVE REMARKS:

2nd GB

"hanto tool #9  
STFF able"

mouth: a few ~~small~~ nodules  
oral bumps (ferrous)

Small crescent shaped piece out of RH (medicated)  
from biting by other turtles.



R25 position:

Released from shore  
7/4/03 Māna Lawi

Revised 04/04/01

Size 1  
G02  
2G02

NMFS, HONOLULU LAB  
Marine Turtle Research  
2570 Dole Street  
Honolulu, HI 96822-2396

3rd lateral  
LTH #8  
moto #8

3

SEA TURTLE TAGGING FORM

DATE FORM FILLED OUT 06/09/03 14th

Renewed  
6/9/03

CAPTURE DATE, LOCATION AND METHOD:

06-09-03, Māna Lawi pond, hand  
capture  
PERSON RECORDING DATA: Jill Q

TUMOR SCORE (circle) OLD TAGS:

ORAL TMRS EXT. YES OR NO  
EMACIATION CODE  
422E7A1D38  
422F1D1E42

NEW TAGS:

RFL NONE  
LFL

STRAIGHT CARAPACE - LENGTH:

43.4 cm

WIDTH: 25.9 cm

NOTCH LENGTH:

43.5 cm

DB: 0 L.O.

VB: 0 L.O.

CURVED CARAPACE LENGTH:

46.5 cm

WIDTH: 41.0 cm

HEAD WIDTH:

7.2 cm

AXIAL: 18.3 cm

LATERAL: 17.4 cm

PPS: YES OR NO OR NE

Y

SEX: Male, Female or Undetermined

U

TAIL LENGTH: T

10 cm

C 4 cm

SAMPLES COLLECTED:

RIGHT FRONT FLIPPER WIDTH:

7.7 cm

PLASTRON LENGTH:

33.4 cm

WEIGHT:

24.5 lbs

blood from neck  
glucose GB 81  
MR 100

DESCRIPTIVE REMARKS:

TO DR. MORRIS  
and GB

moto tool #8

mouth: plaque in rear throat

"ST-19 (able)"

164

(4)

7/3/03 #1

MOTO TOOL #1  
ID 22534 STA

TEL ID: #509192

NMFS, HONOLULU LAB  
Marine Turtle Research  
2570 Dole Street  
Honolulu, HI 96822-2396

3rd lateral  
Moto #1

SEA TURTLE TAGGING FORM

DATE FORM FILLED OUT 6/9/03 14th

Renewed  
Normal Scute

CAPTURE DATE, LOCATION AND METHOD:  
6-9-03, Mana Iani pond, hand capture  
captive

PERSON RECORDING DATA: Jenny

TUMOR SCORE

0

ORAL TMRS EXT:  
YES OR NO

-

EMACIATION CODE

0

OLD TAGS:

Empty boxes for old tags

New RH  
New LH

442C6A2469

442F15544C

STRAIGHT CARAPACE - LENGTH: 35.8 cm

WIDTH: 28.9 cm

NOTCH LENGTH: 35.7 cm

DB: 0 L.O.

VB: 0 L.O.

CURVED CARAPACE LENGTH: 38.0 cm

WIDTH: 32.5 cm

HEAD WIDTH: 96.4 cm

AXIAL: 14.8 cm

LATERAL: 14.4 cm

PPS: YES OR NO OR NE N

SEX: Male, Female or Undetermined 0

TAIL LENGTH: T 9 cm

C 5.5 cm

RIGHT FRONT FLIPPER WIDTH: 6.6 cm

SAMPLES COLLECTED:

PLASTRON LENGTH: 28.7 cm

WEIGHT: 14 #

DESCRIPTIVE REMARKS:

St-19 Able Mouth: Plaques on tongue and throat area

5 9/13/03  
Moto 4 #4  
Normal JR  
Sentes

25312  
ST19

TEL: 503199

Revised 04/04/01

NMFS, HONOLULU LAB  
Marine Turtle Research  
2570 Dole Street  
Honolulu, HI 96822-2396

3rd label  
Moto 4  
Renewed  
14th

SEA TURTLE TAGGING FORM

DATE FORM FILLED OUT 6/9/03

CAPTURE DATE, LOCATION AND METHOD:

6-9-03, Mana lani pond, hand capture  
capture  
PERSON RECORDING DATA: Jenny

TUMOR SCORE

0

ORAL TMRS EXT:  
YES OR NO

—

EMACIATION CODE

0

OLD TAGS:

R25 WB48  
size 1  
New  
RH  
LH  
New

NEW TAGS:

433B077222  
442D3C7076

STRAIGHT CARAPACE LENGTH: 35.8 35.5 cm

WIDTH: 28.4 cm

NOTCH LENGTH: 35.4 cm

DB: 0 L.O.

VB: 0 L.O.

CURVED CARAPACE LENGTH: 36.5 cm

WIDTH: 31.5 cm

HEAD WIDTH: 6.5 cm

AXIAL: 14.0 cm

LATERAL: 13.5 cm

PPS: YES OR NO OR NE N

SEX: Male, Female or Undetermined 0

TAIL LENGTH: T 8 cm C 5 cm

RIGHT FRONT FLIPPER WIDTH: 6.6 cm

SAMPLES COLLECTED:

PLASTRON LENGTH: 29.1 cm

WEIGHT: 13.5 #

DESCRIPTIVE REMARKS:

Mouth: few plaques right side throat  
St-19 able

160  
6

Released from Shore 7/4/03  
Mauia Lani

Revised 04/04/01

NMFS, HONOLULU LAB  
Marine Turtle Research  
2570 Dole Street  
Honolulu, HI 96822-2396

3rd lateral  
L+R  
Renewed

Moto 5  
6/9/03

14th

SEA TURTLE TAGGING FORM

DATE FORM FILLED OUT 6/9/03

CAPTURE DATE, LOCATION AND METHOD:

6-9-03 mauia Lani pond, hand capture  
captive

PERSON RECORDING DATA: Lindsey

TUMOR SCORE

0

ORAL TMRS EXT. YES OR NO

-

EMACIATION CODE

0

OLD TAGS:

WBSZ  
size  
1

NEW TAGS:

REF: 442F3C3F33  
LEF: [barcode]  
NEW 442C705D54  
[barcode]

STRAIGHT CARAPACE - LENGTH:

35.3 cm

WIDTH:

29.1 cm

NOTCH LENGTH:

35.1 cm

DB:

0 L.O.

VB:

0 L.O.

CURVED CARAPACE LENGTH:

37.5 cm

WIDTH:

32.5 cm

HEAD WIDTH:

6.2 cm

AXIAL:

13.9 cm

LATERAL:

13.8 cm

PPS: YES OR NO OR NE

yes

SEX: Male, Female or Undetermined

U

TAIL LENGTH: T

7.5 cm

C

4 cm

RIGHT FRONT FLIPPER WIDTH:

6.2 cm

SAMPLES COLLECTED:

Blood from neck

PLASTRON LENGTH:

29.2 cm

glucose (GB 69 MB 68)

WEIGHT:

13.5 #

TO DR. MORRIS

DESCRIPTIVE REMARKS:

and George

mouth: several areas of brown discoloration

ST-19 ABLE

④ 7/3/03 #2  
MOTO ID 25/3/14 ST19

Rel. ID = ~~503199~~  
3rd lateral 503204.  
L+R Renewed  
moto 2 14th

Revised 04/04/01

NMFS, HONOLULU LAB  
Marine Turtle Research  
2570 Dole Street  
Honolulu, HI 96822-2396

SEA TURTLE TAGGING FORM

DATE FORM FILLED OUT 6/19/03

CAPTURE DATE, LOCATION AND METHOD:

6-9-03 Moku Lani Pond, Hand capture  
captive  
PERSON RECORDING DATA: Lindsey

TUMOR SCORE

0

OLD TAGS:

WB 54

NEW TAGS:

442E3D6702

ORAL TMRS EXT:

YES OR NO

—

size

1

EMACIATION CODE

0



442D536175



STRAIGHT CARAPACE - LENGTH:

7/3/03 33.4

33.1 cm

WIDTH: 26.9 cm

NOTCH LENGTH:

32.9 cm

DB: 0 L.O.

VB: 0 L.O.

CURVED CARAPACE LENGTH:

36 cm

WIDTH: 29.5 cm

HEAD WIDTH:

5.9 cm

AXIAL: 13.1 cm

LATERAL: 12.7 cm

PPS: YES OR NO OR NE

NO

SEX: Male, Female or Undetermined

TAIL LENGTH: T

6 cm

C 4.5 cm

RIGHT FRONT FLIPPER WIDTH:

5.8 cm

SAMPLES COLLECTED:

Blood from neck

PLASTRON LENGTH:

25.9 cm

glucose GB 66 MR 80

WEIGHT:

11 #

TO Dr. Morris

DESCRIPTIVE REMARKS:

and George

mouth: clean

ST ~~19~~ ABLE

168

8

Released from shore 7/4/03 *Na'aua Lani*

Revised 04/04/01

NMFS, HONOLULU LAB  
Marine Turtle Research  
2570 Dole Street  
Honolulu, HI 96822-2396

3rd lab out  
L+R  
Renamed

14th

SEA TURTLE TAGGING FORM

DATE FORM FILLED OUT 6/9/03

MOTO 3  
6/9/03

CAPTURE DATE, LOCATION AND METHOD:

6-9-03 Mana Lani Park, hand capture  
captive

PERSON RECORDING DATA: *Limbey*

TUMOR SCORE

0

ORAL TMRS EXT:  
YES OR NO

—

EMACIATION CODE

0

OLD TAGS:

Empty boxes for old tags

NEW TAGS:

442F457A2A  
442C49137D

STRAIGHT CARAPACE - LENGTH:

39.2 cm

WIDTH: 27.2 cm

NOTCH LENGTH: 34.2 cm

DB: 0 L.O.

VB: 0 L.O.

CURVED CARAPACE LENGTH:

36.5 cm

WIDTH: 30.5 cm

HEAD WIDTH: 5.9 cm

AXIAL: 13.3 cm

LATERAL: 13.4 cm

PPS: YES OR NO OR NE  NO

SEX: Male, Female or Undetermined  U

TAIL LENGTH: T 7 cm

C 4.5 cm

RIGHT FRONT FLIPPER WIDTH:

6.2 cm

SAMPLES COLLECTED:

PLASTRON LENGTH: 27.5 cm

WEIGHT: ~~11.5~~ 11.5

DESCRIPTIVE REMARKS:

mouth: plaques on tongue and rear-throat area

ST-19 ABLE

9 wildlife computers  
SPOT 3 ID 23459

end

Revised 04/04/01

NMFS, HONOLULU LAB  
Marine Turtle Research  
2570 Dole Street  
Honolulu, HI 96822-2396

turtle for spot 3  
satellite  
tag for july 2003

#0253000

7/3/03 14th

SEA TURTLE TAGGING FORM

DATE FORM FILLED OUT 6.9.03

- white paint applied  
dots on each  
side.

CAPTURE DATE, LOCATION AND METHOD:

6-9-03 magna lani pond, hand captured  
captive  
atrium pond

PERSON RECORDING DATA: Lindsey

TUMOR SCORE

0

OLD TAGS:

WC18  
SNE1

ORAL TMRS EXT:  
YES OR NO

-

EMACIATION CODE

0

431E725751



43676D1419



STRAIGHT CARAPACE LENGTH:

7/3/03 26.6  
25.7 cm

WIDTH: 21.6 cm

NOTCH LENGTH: 25.7 cm

DB: 0 L.O.

VB: 0 L.O.

CURVED CARAPACE LENGTH:

27.5 cm

WIDTH: 24 cm

HEAD WIDTH: 4.8 cm

AXIAL: 10.8 cm

LATERAL: 10.9 cm

PPS: YES OR NO OR NE NO

SEX: Male, Female or Undetermined U

TAIL LENGTH: T 5.5 cm

C 3.5 cm

RIGHT FRONT FLIPPER WIDTH:

5.0 cm

SAMPLES COLLECTED:

PLASTRON LENGTH: 21.0 cm

WEIGHT: 6 #

DESCRIPTIVE REMARKS:

~~scribbles~~

Kjkrebs@pacbell.net  
Freelance travel writer

mouth: clean

JULY 2002 hatch Sea Life Park.  
Transferred to Maws lani 11/7/02

170

ID 22534  
AKAHI

July 4, 2003

Release all  
Released 130pm ~ 5 miles offshore  
by NORIKO OSHIMA  
Existing MT #1 w/GB

Revised 04/04/01

NMFS, HONOLULU LAB  
Marine Turtle Research  
2570 Dole Street  
Honolulu, HI 96822-2396

1 year  
10 months old

SEA TURTLE TAGGING FORM

DATE FORM FILLED OUT 7/3/03

NAME: "AKAHI" by Danny AKAKA

CAPTURE DATE, LOCATION AND METHOD:

Maualeani Captive 7/3/03	14ft
PERSON RECORDING DATA: GB	

TUMOR SCORE

OLD TAGS:

RH	442C6A2469
LH	442F15544C

NEW TAGS:

RFL	SAT 22534
LF	

ORAL TMRS EXT:  
YES OR NO

EMACIATION CODE

STRAIGHT CARAPACE - LENGTH:

cm

WIDTH:

cm

NOTCH LENGTH:

cm

DB:

L.O.

VB:

L.O.

CURVED CARAPACE LENGTH:

cm

WIDTH:

cm

HEAD WIDTH:

cm

AXIAL:

cm

LATERAL:

cm

PPS: YES OR NO OR NE

SEX: Male, Female or Undetermined

TAIL LENGTH: T

cm

C

cm

RIGHT FRONT FLIPPER WIDTH:

cm

SAMPLES COLLECTED:

PLASTRON LENGTH:

cm

WEIGHT:

6/9/03 14/09

Numerous print  
pictures and  
video

DESCRIPTIVE REMARKS:

ST 19 ID 22534 Attached 7/3/03  
 (Telavics # ~~1111~~ 509192) 2-4 pm w/3 layers  
 of fiberglass cloth and  
 Resin w/ Castro  
 Held on lens of pm 504 until 7/4 AM then  
 into ~~water~~ pond for 2 hours

ST 19 ID 22534  
Telavics # 509192



D 25312  
HOKU

JULY 4, 2003 Release ML

from Shore 1030AM

Revised 04/04/01

14th  
NMFS, HONOLULU LAB  
Marine Turtle Research  
2570 Dole Street  
Honolulu, HI 96822-2396

1 year  
10 months old

EXISTING MT #

SEA TURTLE TAGGING FORM

DATE FORM FILLED OUT

7.3.03

NAME: HOKU by Danny Araka

(Released by Marty Weisner)

CAPTURE DATE, LOCATION AND METHOD:

Maria Lani Capture 7/3/03 by Marty Weisner from SHORE

Resighted nearby at

PERSON RECORDING DATA:

TUMOR SCORE

0

ORAL TMRS EXT:

YES OR NO

—

EMACIATION CODE

0

OLD TAGS:

WB48

NEW TAGS:

RFL

433 BØ 77222

LFL

442 D 3C7076

SAT 25312 new

STRAIGHT CARAPACE - LENGTH:

35.8 cm

WIDTH:

— cm

NOTCH LENGTH:

— cm

DB:

0 L.O.

VB:

0 L.O.

CURVED CARAPACE LENGTH:

— cm

WIDTH:

— cm

HEAD WIDTH:

— cm

AXIAL:

— cm

LATERAL:

— cm

PPS: YES OR NO OR NE

—

SEX: Male, Female or Undetermined

U

TAIL LENGTH: T

— cm

C

— cm

SAMPLES COLLECTED:

RIGHT FRONT FLIPPER WIDTH:

— cm

PLASTRON LENGTH:

— cm

WEIGHT:

6/9/03 13.5 lbs #

DESCRIPTIVE REMARKS:

Numerous  
Print Pictures  
and Video

Recovered conditions for A to by MHC  
Rice MTH 2002  
SAT TAG Recovery

Known case by Danny Araka for a shore time

ST19 ID 25312 Attached 7/3/03  
(Telavics # 503199) 2-4 PM

Held on Lantai of Rm 504 until 7/4 then into  
Pool for 2 hours  
Fiberglass cloth and resin w/ castro

172  
ID 25314  
KUKINI

July 4, 2003 Release ML 14th  
130pm ~ 5 miles offshore

Revised 04/04/01

NMFS, HONOLULU LAB  
Marine Turtle Research  
2570 Dole Street  
Honolulu, HI 96822-2396

EXISTING  
MT # 2

by = Pili  
w/ab, noni, osha  
more Rice from  
Puddles, etc.  
Lendon/Sen Hib

SEA TURTLE TAGGING FORM

DATE FORM FILLED OUT 7/3/03

CAPTURE, DATE, LOCATION AND METHOD: Name KUKINI  
7/3/03 Manna Lani Capture (means "the king's fast runner")

PERSON RECORDING DATA:

TUMOR SCORE

0

ORAL TMRS EXT:  
YES OR NO

—

EMACIATION CODE

0

OLD TAGS:

WB 54  
442E306702  
442D536175

NEW TAGS:

RFL SAT 25314  
LFL

STRAIGHT CARAPACE - LENGTH:

33.4 cm

WIDTH: — cm

NOTCH LENGTH: — cm

DB: 0 L.O.

VB: 0 L.O.

CURVED CARAPACE LENGTH:

— cm

WIDTH: — cm

HEAD WIDTH: — cm

AXIAL: — cm

LATERAL: — cm

PPS: YES OR NO OR NE —

SEX: Male, Female or Undetermined U

TAIL LENGTH: T — cm

C — cm

RIGHT FRONT FLIPPER WIDTH:

— cm

SAMPLES COLLECTED:

PLASTRON LENGTH: — cm

WEIGHT: 69/03 11 lbs #

Numerous print  
pictures and  
video

DESCRIPTIVE REMARKS:

ST 19 ID 25314  
(Telovics # 503204)

Attached 7/3/03  
2-4 pm w/3 layers

of fiberglass cloth out  
of Rm 504 until 7/4 am then into pond for 2 hour.

ID 23459  
"Keiki"  
SPOT 3

July 4, 2003 Release ML by Francis Ruddle w/GB NO. M.P.  
14h NO MT  
Pii; Sandie Patton and Leilani/JAN HONO

Revised 04/04/01

NMFS, HONOLULU LAB  
Marine Turtle Research  
2570 Dole Street  
Honolulu, HI 96822-2396

10 months old  
SLP hatch 9/02

SEA TURTLE TAGGING FORM

DATE FORM FILLED OUT 7/3/03  
NAME "Keiki" by Danny AAAAA

CAPTURE DATE, LOCATION AND METHOD:

7/3/03 Mānālanī Captive

PERSON RECORDING DATA:

TUMOR SCORE

0

ORAL TMRS EXT:  
YES OR NO

1

EMACIATION CODE

0

OLD TAGS:

WC18  
43676D1419  
431E72575

NEW TAGS:

RFL SAT 23459  
LFL

STRAIGHT CARAPACE - LENGTH:

26.6 cm

WIDTH: cm

NOTCH LENGTH: cm

DB: 0 L.O.

VB: 0 L.O.

CURVED CARAPACE LENGTH:

cm

WIDTH: cm

HEAD WIDTH: cm

AXIAL: cm

LATERAL: cm

PPS: YES OR NO OR NE

SEX: Male, Female or Undetermined

TAIL LENGTH: T cm

C cm

RIGHT FRONT FLIPPER WIDTH: cm

SAMPLES COLLECTED:

PLASTRON LENGTH: cm

WEIGHT: 6.1 lbs  
6/9/03

Numerous  
PRINT pictures  
+ video

DESCRIPTIVE REMARKS:

Wild life Computers "SPOT 3" sat tag (weight = 5kg = 2 pounds)  
ID 23459 Attached 7/3/03  
(WC # 0253000) 2-4pm 2 layers of fiberglass cloth and Resin over plastic cylinder. Astro

Used Magnet to turn "ON" at 1 PM 7/4/03  
Heard in Room 504 Lend 7/3 on Lend  
Then into pond for 2 hours.

174

Date: Sat, 14 Sep 2002 16:59:48 -1000  
From: Robert Morris <morrisr005@hawaii.rr.com>  
To: George H. Balazs <gbalazs@honlab.nmfs.hawaii.edu>  
Subject: ML turtles

[ The following text is in the "iso-8859-1" character set. ]  
[ Your display is set for the "US-ASCII" character set. ]  
[ Some characters may be displayed incorrectly. ]

Here is what I have:

#8	scl
4-19-02	38
6-20-02	38.8
7-19-02	39
9-13-02	39.4

#9	
4-19-02	37
6-20-02	37.9
7-19-02	38.3
9-13-02	39

#7	
4-19-02	37.6
6-20-02	38.3
7-19-02	38.2
9-13-02	NOT MEASURED

Marty may have more-I will check. Comments on growth?

Date: Tue, 5 Nov 2002 07:34:19 -1000  
From: Robert Morris <morrisr005@hawaii.rr.com>  
To: George H. Balazs <gbalazs@honlab.nmfs.hawaii.edu>  
Subject: Fw: October ML turtle measurements

[ The following text is in the "iso-8859-1" character set. ]  
[ Your display is set for the "US-ASCII" character set. ]  
[ Some characters may be displayed incorrectly. ]

----- Original Message -----

From: "Marty Wisner" <mwisner@maunalani.com>  
To: <morrisr005@hawaii.rr.com>  
Cc: "Sandie Patton" <SPATTON.PO@AC.MLR@maunalani.com>  
Sent: Wednesday, October 30, 2002 12:40 PM  
Subject: October ML turtle measurements

10/30/02?

*ML Book reduce*

Aloha some more,

Here they are, all are growing at the normal rates for here at Mauna Lani according to my past records.

- #1 - 29.8 cm., 8.5 lbs.
- #2 - 28.6 cm., 7.0 lbs.
- #3 - 29.3 cm., 8.0 lbs.
- #4 - 29.4 cm., 8.0 lbs.
- #5 - 28.5 cm., 7.5 lbs.
- #6 - 28.3 cm., 8.0 lbs.
- #7 - 39.3 cm., 18.0 lbs.
- #8 - 39.9 cm., 18.25 lbs.
- #9 - 39.7 cm., 18.5 lbs.

All our turtles look good to me. Bye for now,

# Big Isle turtles win independence

By Rod Thompson  
rthompson@starbulletin.com

**MAUNA LANI RESORT, Hawaii** >> Nine young green sea turtles will win their freedom on the Fourth of July, or Turtle Independence Day on the Big Island.

Since 1990, Mauna Lanai Bay Hotel has been releasing 3-year-old green sea turtles into the ocean on July 4. Hotel cultural director Danny Akaka (not the U.S. senator) is credited with picking the day and giving the event its name.

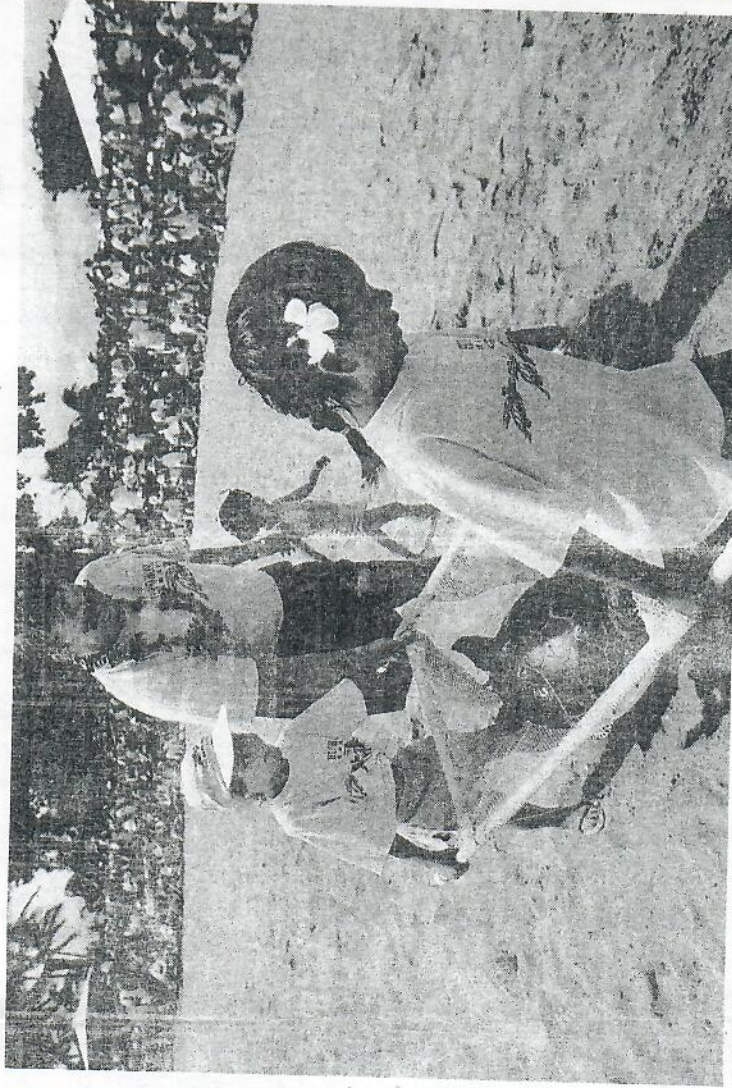
As many as 1,500 people gather every year, some from the mainland scheduling their vacation to be here for the event, said hotel biologist Marty Wisner. About half are local residents, such as Mayor Harry Kim, who comes every year not as a celebrity participant but as a bystander in the audience, Wisner said.

Beginning at 8:30 a.m., the festivities will include games, face painting, balloon animals, canoe rides and people dressed as "Teenage Mutant Ninja Turtles."

"It's packed. It's like a big carnival," Wisner said. At 9:30 a.m., selected turtles, prechecked to be sure they are healthy, are carried by children across the beach to the ocean in webbed "stretchers."

The halau of kumu hula John Kaimikaua will perform a traditional hula portraying the supernatural turtles Eaea from the Big Island and Kaiaka from Molokai.

These turtles were so large they looked like islands when they surfaced, and they had to be pulled out of the water. Ironically, saved people from a rough sea. Eaea had a red



**During Turtle Independence Day at the Mauna Lanai Bay Hotel last July 4, Steven Smith helped two children carry a turtle to be released into the sea.** COURTESY OF MIK LEA AEDER



ROD THOMPSON / RTHOMPSON@STARBULLETIN.COM

**This 3-year-old green sea turtle at the Mauna Lanai Bay Hotel was renamed Kilo Lani (Star Gazer) for his release into the ocean this Friday.**

"That's pretty good for a turtle that never saw the ocean until he was 3 years old," Wisner said.

On Friday, nine more turtles will be released: six from the shore, including one with a transmitter, and three from an offshore boat, each with a transmitter.

Another sign of success may be the turtles "basking," or lying in the sun for hours. Recent Hawaii Preparatory Academy graduate Jill Quaintance wrote a research paper on the behavior, which has been noted in West Hawaii for only 10 to 15 years, she said, about as long as Mauna Lanai turtle releases have taken place.

A sign of the educational value of Mauna Lanai's efforts was the young boy who came up to Wisner and told him he'd learned during a school outing to Mauna Lanai a year before that eating turtle meat is illegal.

The boy said he had gone home and told his turtle-eating friends. "You can't do that any

place for baby turtles to grow up when the first ones arrived in 1989. Just a year later, the biggest ones were outgrowing the ponds, and Akaka thought of Independence Day.

The success of the pond-rearing was shown this spring when Mauna Lanai Hono (Turtle) No. 7777 returned from a nine-month, 1,000-mile swim around the island. "It's a big deal," he said.

Before the U.S. Endangered Species Act was passed in 1973, Sea Life Park at Waimanalo had a population of the turtles. When new ones hatched, they were released into the sea, where they are estimated at having a one in 1,000 chance of surviving to adulthood.

Survivors may live to age 100, but there are few of them left. "It's a tragedy," he said.

shoreline waters of Mauna Lanai. Curious turtles will swim right up to people snorkeling, Wisner said. That's OK, but it is illegal for people to handle or feed them, he said.

Baby green turtles are black, and mature ones have the well-known, black and red "rot case shell" appearance. They are called "green" because of the

by women because the soothing melody of the chant was often used like a lullaby by mothers to calm their children, he said.

Like hawksbill and leatherback sea turtles, green sea turtles are classified as endangered under federal law. That's why regulations how people interact with them.

ML assistance

(177)

6-9-03

Jeffco Marine Science

14th

Kimberly J. Smith

Christine J. Pahl

Amy R. Garrison

John Kelly ←

Rob Buell

John G. ...

Marcy Hunter

Jenny Honer ←

Jessica Coenman

Katie R. Holloman

lateral

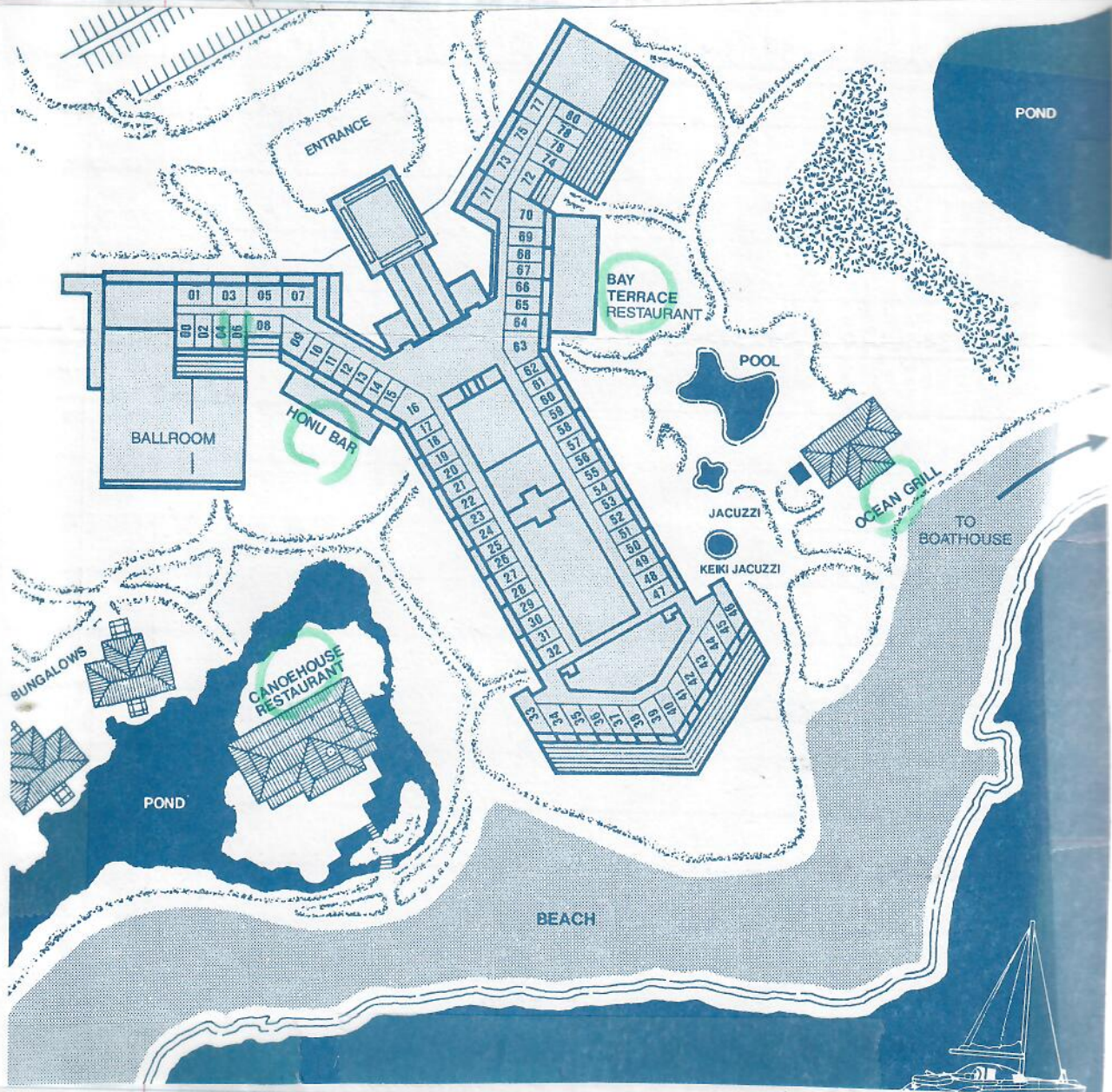
weight: NT





178

Mr. [unclear] [unclear]



[Faint, illegible text from the reverse side of the page, appearing as bleed-through on the lined paper.]