

BALAZS

BALAZS

1977-78

MIDWAY KURE FEB/MARCH 1978  
NACKER II NOV 1977  
FIS DEC 1977  
KURE RESC 1977  
L. HERMAN - MARCH 1978

Photo Log -

page 41

JUVENILE TAGGINGS - pages 6,8 (Necker)

Juvenile Taggings - pages 59, 61, 62, 63, 69, <sup>75</sup>(Midway) [6 total, 2 recoveries]

Juvenile Taggings - pages 79, 82, 83, ~~86-87~~, 91, 96, 97, 100, 101, (KURE)  
[9 total, 1 recovery]

MARCH 21, 1978 - Release of two turtles from Lou  
Herman's facility (tumor removal) - pages 114-116

Elephant seal interview - page 107

VERNON



ROYAL

COMPOSITION BOOK • 9 1/2 IN. x 7 1/2 IN.

AVAILABLE AS:

No. 1130 (09-9130)	60 SHEETS	COLLEGE RULED & MARGIN
No. 1130-P (09-9132)	60 SHEETS	COLLEGE RULED & MARGIN
No. 1143-X (09-9134)	100 SHEETS	COLLEGE RULED & MARGIN

No. 1130-P (09-9132) NUMBERED PAGES, No. 1143-X (09-9134) SECTION SEWED

GEORGE H. BALAZS

Made in U. S. A.

VERNON ROYAL, INC. Elizabeth, N. J. 07208

USCG LORAN Station  
FFS  
P.O. Box 449  
Honolulu, HI 96809

Cherly Gabke - 546-7130

NECKER II - November 10-19, 1977 pages 1-16

FFS - w/Whittow DECEMBER 1-8, 1977 (Narrative start p.18)  
Dec. Tide chart - p38-39 Data in tables of  
other book

KURE - w/walker DECEMBER 21-23, 1977 pages 42-49

Midway -  
(Cromwell departure)

FEBRUARY 16-24, 1978 pages 52-76  
(FEB. 17 day visit to KURE)  
(March 4 - Midway)

KURE

FEBRUARY 24 - MARCH 3, 1978 pages 77-106

- 1- INSTANT COFFEE
- 3- STERNÖ
- 3- SALMIN
- 12- GRANOLA BARS
- 1- 11oz RAISIN BRAN cereal
- 1- 16oz VELVEETA cheese spread
- 4- 5oz puddings
- 1- 15oz RAISINS
- 7- 12 oz spoon size shredded wheat
- 2- 6 each pop TARTS
- 1- 12 oz Roast Beef
- 2- 7<sup>3</sup>/<sub>4</sub>oz PINK SALMON
- 6- 6oz V-8 vegetable juice
- 2- 13oz canned milk
- 2- 15oz HOT CHILI
- 1- 16oz Cranberry
- 1- 16oz Green Beans
- 1- 16oz GRAPEFRUIT
- 1- 16oz peaches
- 2- package TANG orange DRINK
- 1- can mandarin oranges
- 1- <sup>3</sup>/<sub>4</sub> full honey
- 1- Chocolate pudding (5oz)
- 1- Smoked spam meat (canned)
- 1- canned Tortilla
- 1- Creamed corn
- 1- whole tomatoes

Oct. 77 SKINDIVER

pages 24-25

-BASKING  
-NW GreenSNAPPER - The ALLIGATOR SNAPPING TURTLE  
Adds EXCITEMENT TO INLAND DIVING by Bob French

-note FFS CAMERON statement

-DISTRIBUTION - ABUNDANCE -

HUMPBACK WHALES IN HAWAII:

VESSEL CENSUS: 1976

MARINE FISHERIES

REVIEW JULY 1977 V 39 N 7

\* → JO ANN MARIE - SIGHTED TURTLES (AND SEALS)  
AT ALBACORE GROUNDS - <sup>8mm movie film</sup> PHOTOS EXIST ACCORDING  
TO SKIP - NW of Midway.

→ VHF Portable, check on price.

DEPART Kewalo Basin via HONOLULU HARBOR ~ 5:30 PM

NOV 10, 77 R/V EASY RIDER with skip, Ron, Jimmy, Russ,  
THURSDAY George, NMFS OBSERVER MARTINA G. Greenh.7 PM - Coast Guard Notice - Research Boat  
20' underwater (position) - "give a  
wide berth".

Calm Seas across Kawai Channel

11/11/77 off of Lehua at ~ 7:30 AM

FRIDAY ~ 10 AM radio notice that Barking Sand will  
soon fire "weather rocket"

Some Laysan albatross sighted.

note -

- consider artistic photos -

Cornwell - Island aeriels; Island girls; Birds; seals; NW Turtles;

\* → note - RON'S TRIPLER FRIEND - N. Shore / KAEWA PT.

# 4 NECKER

11/12/77  
SATURDAY

Approached Necker about 9:30 AM - many green <sup>vegetation</sup> patches apparent; swell from Northwest.

West Cove has swell wrapping right up into gap - small turtle noted in swell next to ledge - motored along South side of island - noted appearance of hull of sailing canoe in West tip of island. Motored back around Northwest Cape to Shark Cove side - could see several seals (newly molted) on ledge against cliff by gap. Base of Bow Hill could also conceivably host haul out seals.

Too rough to make landing with gear - motored off to South for fishing.

NOTE - That SWELL/Rough water/Difficult landing conditions protect the island from human entry

August  
1976

NOAA Technical Report NMFS Circ - 396  
Whales, Dolphins, and Porpoises of the  
Western North Atlantic - A guide to  
their identification by  
Stephen Leatherwood, David K. Caldwell  
and Howard E. Winn.

Super. of Documents, U.S. Gov. Printing  
Office, Wash, D.C. 20402  
Stock No. 003-020-0019-0

11/12 Sat Bottom fished at south edge of bank, then set lobster traps. Returned to South side of Necker to anchor - report that Cromwell stays ~2 miles out at each of leeward areas.

11/13/77 -  
Sunday

Readied Avon 12' and gear - motored to West Cove, saw two small sharks by Easy Rider - Went on island about 9:15 AM. NW swell still present, but not as bad. 19 seals (of which 2 SA and 2 with tags) on main ledge - noted very small turtle feeding in pool. Brought all of gear ashore at ~10:30.

low tide  
1-2 PM

At 10:15 adult 681 tagged female hauled out - crawled considerable distance up - later a seal hauled out along side and many photos taken. Moved all gear up to first rough plateau on Annexation Hill.

Ledge washed clean - many water pools; white sand again cliff face; no sign of dead seal (but smell present). Albatross are present.

2 PM Moved gear to previous site near ledge; watched turtles feeding - caught a juvenile. Noted *Ulva* sp. growing intertidal by pool. Climbed up Annexation Hill - many albatrosses - Laysan and Black-footed - Noted nice plant growths - *Chenopodium*? (looks like Big TRIBULUS); Noted Bomb crater by Marae #3 - has BFA with new egg inside; Noted Shropnel

11/13  
Sunday

out on West Cape (looks like polynesian sailing canoe);  
 Blue-Grey Noddies present - area well protected from Trades -  
 No marae on this projection (?) If not, why not?  
 Noted that even in direct sun, rocks do not seem  
 to get very hot.

Note that basking "ramp" extends for some  
 distance underwater. What is width underwater

JUVENILE CAPTURE AT ~ 2 PM; scoop net inside  
 reef.

2412 RFL

2413 LFL

S -  $15\frac{1}{2}$  x  $13\frac{1}{2}$ C -  $16\frac{3}{8}$  x  $15\frac{7}{8}$ PL -  $12\frac{3}{4}$ "

18 lbs

HEAD -  $2\frac{1}{2}$ "TAIL -  $3\frac{3}{8}$ "

Pink coralline alga all over carapace

3x stomach samples -

Red alga (2 types - <sup>(appears to be)</sup> ^)

photos of Turtle



Good night on ledge w/ canvas - woke up several times to observe baskets - recording appears in basking log

11/14/77  
MONDAY

First light about 6:45 AM - Sunrise ~ 7:15 AM

Waves from tide going up on basking ledge -  
Saw juvenile turtle feeding.

Noted timestones on ledge -

Departed early (~8:30) up Anneration Hill to photograph Marae. <sup>at 12 noon</sup> for radio check with Ship. Photos of tying flag to pole - flag up at 1:19 PM -

afterwards departed for Flagpole Hill -

Collected three new types of plants -  
Noted 8 bomb craters going up (Summit<sup>or</sup> Flagpole?)

Noted 4 bomb craters going up Flagpole Hill. possible bomb strike on N face of Anneration Hill - to the left of Marae No. 6.

At gap between Anneration and Summit Hills I hiked down to South - noted shrapnel in area - bullet jacketing - down low noted seep which seemed to be producing a lot of water (20<sup>gal</sup> in 24 hours?).

Looked clean, but tasted very acidic - alum - makes mouth pucker.

Photo of seep.

[BACK note - possible bomb/bullet strikes on bluff ledges going up Anneration, before halfway cave.]

South of gap noted small snails very

11/14/77 MONDAY high on hot rock. Also some of pizhi  
 were quite high. Also note that  
 groups molt in front of halfway cave.

Returned to ledge about 5:15 PM -  
 noted adult seal lying in pool of blood,  
 belly area torn open - appears to be  
 mostly skin - flesh/fat all exposed,  
 turnstones pecking at area/blood.

Captured juvenile turtle w/scoop net at 5:45  
 in pool area:

2414 RFL

2415 LFL

S -  $16\frac{3}{4}$  x  $14\frac{1}{2}$ C -  $17\frac{5}{8}$  x  $16\frac{5}{8}$ 

Recaptured Necker II

4/26/79

See p 7 other  
DATA BOOK

PL - 14

TAIL -  $3\frac{3}{8}$ 

23/65

HEAD -  $2\frac{5}{8}$ 

also End of LFL rotted off / or injury  
 healing(?)

Two barracks on plastron collected  
 one on 1st MARG right remaining. Three difficult  
 stomach samplings produced small amount red leafy

11/15/77  
Tuesday

First light about 6:30 AM - Sunrise about 7:20  
Noted that NW swell coming up; departed up  
Annexation Hill about 8:30 AM - moved two good  
buckets up higher. Took photos by  
flagpole - then proceeded along each hill of  
island to the East. About 1 PM Easy Rider  
came by, talked to me, circled island - fishing,  
observed <sup>NW</sup> swell.

11/15 Roll 8 ASA 64. photos 1-8 me by Flagpole/Flag ~ 9:30 AM;  
Going down Annexation Hill noted one bomb crater (previous  
expedition photo); noted one crater right in saddle; Going up  
Flagpole Hill noted two craters on the right, three on  
the left (about half way up) - "slide" area below these  
craters contains much shrapnel; At 9:50 AM noted  
"blown out" ridge immediately upland and adjacent to  
Marae —, another one about 25 more upland;  
photo 10 where Marae 20 was (from NW) with side  
upright of Marae 21 showing in photo; photo 11 Marae 21  
and where Marae 20 was - bomb crater in foreground  
(from NE); photo 12 taken from Marae 18 - "refuge" sign pile -  
crater left - right, Marae 21 behind - where Marae 20  
was to left; photo 13-14 panorama to left of  
photo 12; photos 15-18 panorama right around - still  
standing on "refuge" sign pile (iron stake rusted in center);  
NOTE - (From refuge sign I counted 9 craters  
on slope of Summit Hill; 4-5 craters  
"terraced" - (down (to south) of Marae 19 uprights  
(East of "Black Stone w/ hole" Marae —));  
photo 20 saddle between Flagpole and

Tuesday

11/15/77

Roll 8

continued

Summit Hills - (note crater and Marae 26);  
 Photo 20 crater below (to East) of Marae 19 uprights;  
 Photo 22 Marae 26 from NW with Marae 27 in background  
 (B); Photos ~~23-24~~ Marae 24 from East (same as ~~21 A~~ A)  
 (photo 23 taken standing in Marae 25); Photos 25-26 Marae 25  
 (from East) (photo 25 has right most upright of Marae 26 in  
 left side of photo); Photo 27 Marae 26 from East;  
 Photo 28 slope of Summit Hill from front of Marae 26;  
 Photos 29-30-31 Marae 26 M upright with albatross;  
 Photos 32-33 Marae 27 from East, bomb embedded  
 in ground near where standing for photo (photographed trip);  
 Photos 34-35 Marae 27; Photo 36 Marae  
 26 from backside M; Photos ~~36~~ 37 Annexation Hill  
 from Flagpole Hill;

Roll 9  
Cont: 11/15/77

Roll 9

11/15/77

ASA 64

Photos 2-4 MARAE 12; Photo 5 retake of Marae 21  
 area from Marae 18 (more sun in this photo); Photo 6 Marae 21;  
 Photo 7 where Marae 20 used to be; Photo 8 Marae  
 22-21 crater to right; Photo 9 accidentally hit  
 timer mechanism; Photo 10 Marae 26 area from East  
 (note crater under Marae 19); Photo 11 Bluff shelter  
 SITEF (Sharpnel) Terrace at entrance all broken down;  
 Photo 12 Marae 28 and background; photos 13-14  
 Marae 29 from SW standing on adjacent terrace;  
 Photo 15 Marae 29 w/ adjacent terrace in distance  
 (from NE); photo 16 lowest terrace site H from  
 South; Photo 17 adjacent terrace (seems like a lot  
 of soil in some of these 6-8" or more); Photo 18  
 Terraces at H; Photo 19 "Cistern" at  
 terraces H = Photo 20;

Tuesday  
11/15/77  
~ 4 PM

Roll 9

Cont: 11/15/77

Photos ~~21-22~~<sup>23</sup> Marae 30; note there is a crater  
Bowl Hill side of Marae 30;  
Note also that a "rockpile" exists by Tritones on  
Bowl Hill; bolts and bolt eye in ground, also iron  
pipe/wood junk by Marae 31; Photos ~~24-25-26~~  
Marae 32; Photos ~~27-28~~ Marae 33 from SE;  
Photo 29 pile of rocks by HEAVY Tritones; Photo 30 -  
Shelter top  
of SIEVERS  
(93-34) photos of me by Marae 32; remainder?;  
note - 4 craters in saddle by Site I (water worn stones);  
also Bullet casings and shrapnel on terrace  
of Marae 21; Photo 31 - island to west from Sievers; Photo 32

Tuesday

11/15/77

~ 4 PM

Sievers from West; photo 35-36 SITE H; Photo 37 EAST slope Sun;  
Photo 38 NW cove

Returned down Annexation Hill - large white  
water surging through gap - brought all gear  
(except net/campers/scale) up to half way cave -  
then next higher cave; Saw three, then  
for short period 4, adult turtles hauled up  
part way on left boulder beach - some seals  
are up higher; one turtle noted as male;  
photos taken in roll 10; Note that regular  
basking site has water from gap rushing  
across it - some seals are on ledge up higher.

backnote - "white sand" at places to the back  
of ledge.

Spent night in cave with canvas spread  
over East opening. NW Swell hit

\* Reinforcing and/or flotation jacket for white bucket  
 \* CO<sub>2</sub> vest

11/15/77 West Cove all night - thunderous pounding  
 Tuesday isolation - Complete, West Cove is white  
 water (unknown how far this extends  
 underwater). Some seals still on ledge  
 and on Left Boulder beach.

11/16/77 Awake - 5:45 AM - still big waves;  
 WEDNESDAY at - 6:45 AM climbed up Annexation  
 Hill - took photos of sunrise Roll 10;

(\*) Brought down flag and pole at 7:40 AM;  
 observed south side of saddle between  
 Annexation and Flyfold Hills as possible  
 site to get off island - waves - swell  
 wash appears way to big. Went down  
 Annexation Hill - radio call with Skip  
 about 8:30<sup>AM</sup> - they have pulled gear  
 early and are now heading for island -  
 (still about 200 lobsters short of 2000-2200?)

I proceeded to NE point of  
 "NW" Cape - observed swell and  
 estimated that departure at this site  
 looks feasible; Notified Skip that  
 I will store some gear/removed  
 important articles - Left to  
 get gear at 9:30 AM -

Gear left in 3 (?) white buckets  
 in Half-Way Cave - Food (Canned);  
 batteries; small water container  
 collapsable; stomach probe for turtles;  
 jar of formalin; T-shirt, socks, shorts, blue

ORIGINAL FLAG FLEW: Sunday 27 May, 1894  
 83 years 5 months 14 days

11/16/77 sweat shirt; <sup>mattress patch kit;</sup> sterno; Folding chair; Air  
WEDNESDAY mattress, pink blanket in plastic bag,  
2 canvas tarps (5x7; 7x9 green); sauce  
pan and yellow cup.

Transported camera bucket - small knap  
sack with gear - and ~~third~~ second white  
bucket across gap - picked up  
rubbish; retrieved one preserve  
that had apparently washed through  
gap - originally was three or four on  
ledge above West Cove landing site;  
I previously saw one floating to  
West; also one is still on ledge;  
Noted seal spewing, red, contained  
spiny lobster parts.

It took two trips to transfer  
gear to NE departure site; also  
took calipers, net and scale  
which was already on NW cape  
side. No basking turtles on  
Boulder Beach at last observation;  
Transference of gear and me took about  
1 1/2 hour; start about 10 PM - two  
white buckets thrown out o.k. - First  
with cameras hit Avon. Backpack  
was left low after several attempts,  
hit by wave and washed down  
low on ledge, where it caught.  
Next wave hit and carried it

11/16 WEDNESDAY out, but trapped air kept it afloat. I jumped shortly thereafter with orange life preserver and wet suit hood. [very small juveniles seen feeding just off shore]

[BACKNOTE - Richard Kenny - LEHUA] Several attempts to throw line from Avon to me - finally succeeded and I jump on a hull in Avon a few minutes later.

Backnote - Before leaving island ship ~~was~~ informed me that "I don't want to worry further, but there's a school of about 25 sharks around the boat - Genos feeding them."

Several sharks followed Avon in to island.

Dried out gear on Easy Rider - had lunch - up anchor at ~ 3:30 PM. Motored in to NE point to observe at close range - WA photos taken with Roll 10 - also one of Genos with island in the background. Motored to West Cove where more photos were taken. Swell seems to have lessened some at this site. Motored past West end of island - series of photos taken under good light conditions (~ 4 PM). Continued approximately three miles to the South



11/16/77 where ~110 lobster traps were set at 10 fms. out.  
Wednesday Anchored along side gear for the night.

11/17/77 Awake about 7 PM - pulled gear -  
Thursday got ~146 legal size lobsters -  
Departed Bank for Honolulu  
Very calm night

11/18/77 Calm all day - kept lookout  
FRIDAY for logs - fish aggregation -  
Passed LEHUA in the afternoon - caught  
one small yellowfin tuna and one Ahi.

11/19/77 Arrive Kewalo Basin ~ 6 AM -  
Saturday Calm Weather

- Notes -
1. Consider Lehua expedition
  - \* 2. Blocks of wood for old tagg-drift
  3. Albatross predation on hatchlings  
North of Midway?
  - \* 4. Safety-throw line of polypropylene -  
monkey fist w/ float-weight
  5. Wet suit jacket-vest
  6. Air mattress biddle.

1. Collect water sample from large seep on  
South side of saddle between Annexation  
and Flaggale Hills - See if boiling makes  
it drinkable. (wat for fire?)
2. Collect soil sample from "H" traces -  
depth? excavate cistern.

GENOS HAND  
SIGNALS for surf

## Significant Results of Expedition -

1. Captured two juvenile turtles - tagged - obtained stomach contents;
2. Further confirmation of prevalent nighttime basking.
3. Use of boulder beach as a basking site
4. Occurrence of turtles at this time of year
5. Recovery of previous tagged <sup>adult</sup> basker
6. Seal wound observation \* (Need a slide and print from BW negative)

NECKER PHOTOS NEED - GREEN STONE  
- Bullet in cliff  
- Shrapnel

## Considers -

1. Current Charts <sup>IN OFFICE</sup> - between Central Polynesia and H.I. - Necker: - DRIFT (Change over past 500 years?)
  2. Seeps - contents of water? Boiling effect?
  3. Marae built within one or two lifetimes?
  4. "The Navigator"
  5. Effect of Salt Spray (on artifacts and fresh water)
- Several days after return, received algae specimens from George collected from lobster traps during trip.

# 18 FRENCH FRIGATE SHOALS

DEC. 1, 77 <sup>0900</sup> Depart Barbers Point C-130 1342 with Causey, Whitlow, Rogers, Ernstman,  
 Thursday H. Nogle et al., - one touch and go landing -  
 on way to Nihoa, clouds and rain,  
 but very little wind - never saw Nihoa.  
 Saw Necker - same swell apparent - did  
 not see orange life preserver. - took  
 several photos of island. Arrive  
 FFS area about 11 AM - one circle  
 of Shoals - upon landing, met Tim  
 Harris - note Palmer and Jones departed  
 for good.

Repacked boat - acid in new battery -  
 Walked around Tern - east end is  
 washing out → Nov 29<sup>or 30</sup><sup>th</sup>, Carretti, Gerald <sup>(Cook)</sup>  
 Saw (egging) two seals together -  
 by club - (may have been pupulating -  
 On November 12 they went to W-S  
 about 3 PM they saw ~ 6-8 basking turtles,  
 also young green seal with wound.  
 Set shark line.

Dec. 2, 77 UP about 7 AM - nothing on shark line -  
 FRIDAY up again at 8 AM. Cool morning - report  
 ~ 68°F. Launched boat and departed  
 for Trig ~ 11 AM. No turtles on Trig,  
 but I noted one track apparently  
 from yesterday. TO W-S, anchored  
 boat. No turtle basking. Photographs  
 of birds taken. I went out in

Dec 2,  
FRIDAY

Dec 2  
FRIDAY

Dec 2, 77  
FRIDAY

In regard to whoever put those signs on top of La Perouse Pinnacles, how the fuck could anyone be ~~that~~ enough to desecrate such an awe-inspiring natural monument. Whoever performed this deed was most likely a typical bureaucratic asshole with no sense at all. I think the damn things should be removed with kente.

J. Hambro KAMBIC  
RM3 JSCG

Dec 2, 77 boat ~ 3:45 PM - no turtles seen in Cove -  
FRIDAY (saw one earlier from shore in cove).  
Troll fished for awhile offshore, but caught nothing. Picked up Causey ~ 5 PM, motored to Trig - off South side. Saw big turtle at surface; two - three more under water. A male started to follow boat - (note that this has been seen/reported before at FFS). Survey of N Trig observed three basking turtles (probably all ♀). One up quite high. Returned to Tern about 5:45 PM, anchored boat off Turtle Club. Look reports that young green seal that was alive last night behind quarters is now dead. I observed and noted healed bite marks on tail like young Necker seal in August.

DEC. 2, 77 Cook caught an 8' foot shark a few weeks ago - saw jaws. Report of going outside of reef to the north - 45' water - caught small *Styria*, *Ulua*, *Mahihahi* - also many sharks came around boat when chummed.

(CONSIDER - that numbers of baskers / incidence may be a result of groups of turtles feeding out - and then coming in to rest.

Dec 3 Up about 9 AM - nothing on shark Saturday line - put tubes in tires on boat tracks. Cut open dead SA seal - nothing in stomach - w/pt. worms attached to ulcers - photos and preserved specimen - total length 57" - Male - fat layer  $\approx 3/4$ " thick - blood on outside of stomach. Marked burial site.

Departed Tern and arrived Frig at 1:20 - Basker<sup>m</sup> up from South on sand spit joining. Later found to be 1226 female. 70 W-S;

2-3 PM - no basker - no juveniles offshore. Back to ~~SSS~~ at 3:20 - Three total baskers up - 1226, 948 ♂, at west end, and male North shore. 948 Radiometer at 4 PM. 33°C - side to sun (in south quadrant).

Dec 3  
 SATURDAY  
 Breath an 8:30 sec breath hold -;  
 Turtle 1226 31°C at 4:25 PM. 3rd  
 turtle male at 4:45 PM <sup>[SUN BEHIND CLOUD]</sup> left side 22°C,  
 23°C side to ~~SUN~~ - this turtle presents  
 quite a deflection angle to sun. One  
 side completely shaded, after sun came  
 back out, radiometer showed 25°C - 24°C.

departed Trig ~ 5 PM  
 - Consider - redistribution of seals on islands  
 at different times of the year - A-S-A-P

- Consider - Food Study Importance - SHARKS  
 SEALS

- Consider - Compiling in Gray Book form all  
 seal tag recoveries, as per  
 juvenile taggings

\* - Consider - Bibliography of Hawaiian Monk  
 Seal research  
 Manuscript completed  
 2/16/78  
 TO MAC  
 office

Dec 4  
 SUNDAY. Left Tern for Trig about 10:45 -  
 arrived Trig 11 AM - baskets just hauled  
 out - left Causey on Trig and proceeded to  
 EAST via Round (Mullet gone); Surveyed  
 nearshore area of East - NO small turtles  
 seen; proceeded along West Reef to gap  
 and to La Perouse - many photos w/wA  
 circling rock. Noted posts of two signs on  
 top - also algae growing on rock - possibly  
Caulerpa. (Note that in 1973-74 I saw

John used to eat.   
 La Perouse

12/4/77  
SUNDAY

Catly  
Eggs  
noted  
also one  
seen  
on Tern

Asparogopsis on rock. Noted very few opiki - none on Little La Perouse. Returned to EAST - went ashore - noted many black footed albatross - many more than last year - few Laysan. New dominant vegetation present - extensive. Also kuku Burs.

Two specimens collected. Also checked East Reef - Caulerpa present - specimen collected. Concrete filled barrel where I usually sit has been tipped over by wave action.

Proceeded to W-5 - no feeding juveniles seen. Walked around island - counted seals, but again no baskers.

Proceeded to Trig about 3:30 PM - photos with whitow. Three baskers are up. The one we saw going up at 11 AM arrival left during the day. Male 948 is up on Sulerd of Trig - two are on North shore beach. Sand temperature near baskers - 21°C. Seawater - 25.5°C.

— Took Radiometer of Brown shell basker at ~ 4:30 PM (Tags 1229, 2417, 2418) female 30°C <sup>sun</sup> 26°C body then turned over for rectal. (photos) 29°C.

— Turned second female (1120, 1121, 2416) as it was leaving - Rectal - 25.4°C

Times out <sup>rec 29°C</sup> 12:45 PM 4:35 PM

3:03 PM - 4:35 PM

12/4/77  
SUNDAY

12/5/77  
MONDAY

Swimming  
through

12/4/77  
SUNDAY

Note that 1229 had reddish skin around ventral surface of four flippers.  
BACKNOTE - Rats bite backs of ALBATRESSES

NOTED AT KURE - MENTIONED IN

NATIONAL GEOGRAPHIC ARTICLE

Frigates on cover - Date?

12/5/77  
MONDAY

Depart Tern about 10 AM - fished on the way to Trig - caught two Ulua - saved one for shark bait - Arrived at Trig ~ 1030 AM TURTLE #1

female already ashore - may have been there since 10 AM or earlier; situated more toward East end of North shore. Hind limbs getting wet occasionally. Front right up close along side, body - left out at right angle and flat.

Whitlow later saw small pile of sand on left - sand flipped? Continuous observation as follows:

			EYE/BREATH	
	10	59	20	open (O)
	11	00	25	closed (C)
Sunny throughout	11	00	40	O
	11	02	00	Breath (BR)
	11	02	20	C
	11	02	50	O
	11	05	00	C
	11	05	15	O
	11	08	05	BR 6:05
	11	09	50	C
	11	10	45	O
	11	11	00	C
11	12	45	O	



12/5/77  
MONDAY

Cont. Turtle #1

10 63 50

11 64 35

11 16 05

11 18 15

11 19 20

11 20 25

11 22 10

11 22 40

11 24 15

11 24 35

11 25 00

11 26 45

11 27 40

11 29 10

11 29 40

11 29 55

11 31 20

11 31 45

11 33 15

11 34 00

11 34 20

11 34 55

11 36 20

11 38 40

11 39 50

11 40 25

11 40 45

11 41 20

11 42 20

5:45  
C (head moved slightly to right)

O

C

O

C

O

C

O

C

O

C

BR (head to right) 4:30

C

O

C

O

BR (head to left slightly)

C

O

C

O

BR 4:25

C

O

C

O

BR (head to right)

C

O

O

C

11	43	00	0	
11	43	45	C	
11	44	45	0	
11	46	50	BR	6:25 (Turnstone passed by) (head to left)
11	46	05	C	
11	46	30	0	
11	48	05	C	
11	50	35	0 BR	3:45 (head to right)
11	51	45	C	
11	52	05	0	
11	53	50	C	
11	56	45	0	
11	57	30	C	(Turtle noted offshore)
11	59	00	0	
11	59	55	C	
55	12	01	05	0
12	01	50	BR	6:15
12	02	30	C	
12	02	45	0	
12	03	30	C	
12	07	00	0 BR	5:10 (head to left)
12	08	40	C	
12	09	10	0	
12	10	15	C	
12	11	10	0 BR	4:10 (head to right)

55  
Turtle departed beach at 12:28  
note that a seal was about 5' from this  
turtle - head to tail.

12/5/77 MONDAY At 12:40 turtle #2 came ashore -  
 about central on N shore. Toog present  
 half way out on right flipper (female).  
 Still crawling up at 12:45

12	49	00	O	BR	- more crawl
12	50	30	O		crawl
12	51	40	C		
12	51	50	O	BR	2:50 crawl
12	52	30	C		
12	52	40	O		
12	52	55	C		
12	52	60	O		
12	54	00	BR	2:10	crawl
12	54	55	C		
12	55	00	O		
12	55	10	C		
12	55	20	O		
12	56	00	BR (deep)	2:00	EXPAND
12	56	40			carapace seemed to lift
12	57	30	C		crawl, slightly to left
12	57	40	O		
12	59	15	C		
12	59	25	O		
12	59	45	BR	3:45	crawl
01	01	05	C		
01	01	15	O		
01	02	30	BR	2:45	
01	03	00	C		
01	03	05	O		

## Turtle #2 (cont.)

01	04	15	C	
01	04	25	O	(Some sun came out)
01	06	00		(Skin/shell now appears dry)
01	06	30	C	
01	06	40	O	
01	07	40	C	
01	07	50	D	
01	08	35	BR	6:05
01	10	05	BR	1:30 (Turtle #3 came up)
01	11	55	BR	1:50
01	13	30		( <u>head to right</u> ) opens (eyes <del>close</del> then gradually <del>close</del> )
01	15	40		close
01	15	50		open (shade again)
01	17	40	BR	5:45 (head to left)
01	18	15	C	
01	22	10	O	
01	22	10	C	(gradual open, <u>head to right</u> )
01	23	10	C	
01	24	00	O	
01	24	10	BR	6:20
01	25	15	C	
01	25	30	O	
01	26	15	BR	2:15 (head to left)
01	28	45	BR	2:30
01	30	10	C	



## Turtle #2 (cont)

01	30	45	O
01	31	10	BR 2:00 crawl
01	34	00	C
			O
01	34	20	BR 3:10 (head to right)
01	35	15	C
01	35	35	O
01	36	10	C
01	36	50	O BR 2:30
01	37	00	C - O
01	39	15	C - O
01	40	50	BR 4:00 (head to left - throat activity)
01	41	45	C
01	42	30	O
01	43	30	C
01	43	45	O
01	44	15	C
01	45	00	O
01	45	25	BR 4:35

12/5/7  
MONDAY12/6/7  
TUESDAY

Turtle #3 Brown shell, female  
 came up about 1:10 PM North Bluff,  
 no top on right flipper - Hind right looks  
 deformed - healed injury ~~is~~ poked up? -  
 Red stains in creases of skin - same as  
 number two of yesterday.  
 at 12:00 PM, more crawls made.

12/5/77 short, hard rain at ~ 2:25 PM - stopped  
MONDAY and at 2:36 PM both turtles noted  
returning. Thereafter noted 3-4 turtles  
cruising offshore. Departed Trig for  
Tern Cat ~ 3:30 PM. No more baskets.

- Buried ~ 55' seal - brown, some green -  
with stake by head.

- Also put more dirt over a long  
dead seal noted at west end - 1/2  
buried orange float nearby.

Returned to Tern - made phone patches  
to Lin, folks. Baited shark line  
from hoist. Noted immature Red-footed  
boobie at end of runway with head  
injury.

12/6/77 NW wind blowing stronger - departed  
TUESDAY for Trig at ~ 10 AM - caught fish on  
the way - stayed on Trig from ~ 10:30 AM  
to 3:30 PM, no baskets. Saw juvenile  
or SA offshore - Two breath holders 8 min. each.  
Departed for W-S about 3:30 PM -  
caught two fish on the way. Anchored at  
W-S cove and noted <sup>10'</sup> tiger shark ~ 20' from  
shore in 6-8' water - tail section coming all  
the way out of water - straight up - about 1/3  
length of body; noted two sections of  
intestines float away - collected (sample retained)

12/6/77  
Tuesday

Shark left immediate site several times, but returned for more action. On one return, saw part of brown seal (head attached) come out of water - hopped very quickly. Water turbid - milky. Motored boat around cove - saw shark several times - once further out, and also over "feeding" (carcass) area. No blood seen in water, therefore presume original attack took place awhile ago. Relate that to observations by Caysey J at Trig of Shark trying to get at Turtle Torso washing in surf.

Returned to Tern ~ 5:30 PM - wet ride back against chop. Set shark line on hoist - (2nd nite). Report other line had 8' shark - but straighten gaff and escaped.

Note - need to update adult turtle recovery data sheets

12/7/77  
WEDNESDAY

Arrived at Trig 9:45 AM - clear skies, no wind (little) North surf up.

11:30 AM (#1) Turtle → 948 came ashore SW corner beach  
All wet from wave wash → ← flat

12 noon - wave wash - turtle crawled up more.

12:35 PM - Washed completely out

12:45 Crawled in again

12:48 Washed out again

few minutes later crawled out again  
1:10 PM photo (rolls) of turtle washed out <sup>swam along</sup> beach to east

12/7/77

12/7/77 Turtle #2 ashore at 1:25 PM, North shore, East end of beach.

1:47 crawling up more  
dry about 1:50-1:55 PM

2	06	15	BR	0	
2	09	10	BR	0	2:55
2	09	40	C		
2	11	25	O		
2	12	30	C		
2	15	10	BR	0	6:00
2	18	00	BR		2:50
2	18	30	C		
2	21	20	BR	0	3:00
2	22	45	C		
2	23	45	O		
2	24	15	C		
2	26	30	O	BR	5:10
2	29	00	C		
2	29	30	BR	0	3:00
2	30	15	C		
2	32	20	O		
2	34	10	C		
2	35	45	BR	0	6:15
2	36	40	BR		0:55 (Head to left)
2	37	30	BR		0:50
2	38	00	C		
2	43	45	O		(slight Head to center)
2	45	00	BR		7:30



## Turtle #2 (cont)

12/7/77  
WED

2	45	05	C	
2	46	45	O	
2	47	40	C	
2	49	00	O	
2	49	35	BR	4:35
2	50	30	BR	(head moved forward) 0:55
to right, right front flipper pulled in and passed over carapace, posterior to anterior - and brought to rest at right angle to ground along side of carapace.				
2	55	00	C	
2	56	15	O	
2	57	00	C	
2	58	10	BR	O 7:40
3	00	40	C	
3	02	50	O	
3	05	15	C	
3	07	20	O BR	9:10

This turtle found to be untagged -  
turned over at 4:45 PM -

Radiometer Carapace - 26°C

" plastron - 25

Cloaca - 27.7°C

Turtle #3 Male tag 1214<sup>LFL</sup> - came ashore at  
2 PM - central portion of North Shore  
at 2:15 PM appears completely dry -  
2:19 PM - half wet from wave.  
2:32 PM - all wet

12/7/77  
WED

Sand near globe - 21.2°C (damp) 33 FFS

12/7/77  
WED

<sup>part</sup> Inflators up close to body, but flat  
against the sand - <sup>body</sup> partially buried from  
wave washes -

Depart Trig at 5:30 - Turtle #3 still  
out - but shaded by slope of beach.

BACKNOTES Turtles #2 and #3, males  
tail curled and to left. #1, straight.

Turtles

Seals - complicated by many islets at FFS

Taped SOUND - check  
notes burrs on seal's coat -  
transference to other islands.

→ Young - squid specimens  
→ Ranson - dope - ER data

Profile - frightens turtles

Midway bird permit

3:10 PM - big turtle seen offshore -  
Feeding or sleeping (?)

3 PM Tide going out - very low.

12/7/77 Departed Trig ~ 5:30 PM - Hauled boat out -  
Wed. Put away gear -

Boston Whaler needs -

1. Wiring upgraded in panel
  2. " " " to ignition system (plug, coil)
  3. Seal strip for around motor covers
  4. Wire or tightening of steering connection at motor
  5. Small patch (need at previous site) - bottom
  6. lower gear oil/grease.
- Consider purchase of emergency transmitter

ER shark slides belong to Kenneth Homer.  
Returned ~ 12/18/77 post

ET - Vic DOSCH - S. Dakota  
owe him \$5.00 for FFS patch

12/8/77 Reached gear during morning - Rainbow Air  
Thursday arrived 11:50 AM - (99-669 Hulumanu St.  
Aiea, 96701)

pilots Harry Clark

Knows Bush -  
flys DC-6Chis  
Japanese MISSILE  
TRACKING

Joe ?  
Depart for Hono ~ 1 PM.

Altitude 9400 ~ 155 mph (knots)

12/8 /  
Thursday

12/8/77  
Thursday

TILDEN is now taking temperature data.  
BRION runs MARS/HAM unit.  
note that there are reports of juveniles  
being seen at Southeast corner of  
Runway (where old FAA wind sock was located)

BMI TYSON Home address  
1203 16th AVE North  
Jacksonville Beach  
Florida 32250

#10:00 Sent 12/9/77

JOSEF PALMERI  
2417 POLK STREET  
HOLLYWOOD, FLORIDA 33020

later letters  
returned - address  
unknown

GENAVCO CORP.  
AIRCRAFT MAINTENANCE  
SALES AND SERVICE  
HARRY J. CLARK  
PRESIDENT

225 KAIULANI AVE. NO. 1501  
Honolulu 96815

Bus. 847-3467  
Res. 923-9614

note - Lights at end of island by hoist  
continue to be kept off.  
Harry knows "Hank" Bush - "strange sort of guy"  
may not be making money - could be losing.

12/8/77  
THURSDAY

Objectives of THIS EXPEDITION WERE -

1. Thermal ecology observations/MEASUREMENTS  
AS PER NATIONAL GEO. GRANT
2. TAG RECOVERIES OF ADULT BASKERS / TAG  
UNTAGGED BASKERS / CENSUS (6 RECOV.; 1 NEW TAG)
3. CAPTURE, TAG, AND RECOVER JUVENILES

-MARS-

7 Feb 78

Call from Tim Harris - "swell washed  
 ~18" turtle over seawall - returned to ocean  
 by CG man. Also swell started to  
 erode corner of island - so buried  
 seal was moved. While out  
 fishing in South channel, Tim noted  
 several 6-8" turtles + big mamas.  
 Both Tim and Chuck depart on 29 March -  
 will be in Honolulu for a few days.

Prospective C.O. is Ann Heppers;  
 CWO is Al Klipetsky.

According to earlier message of  
 30 January - Buttonwood to FFS  
 12 February; - Malo to FFS - 13 March;  
 Return civilian flight March 1.

March 29 Flight already full.  
 He requested that I send out  
 two boxes of Milk Bone Dog Biscuits.

Dinner with Harris - Lancaster - Wotton and  
 wife - H. Harris - USCG Group,  
 Woods Hole, MA 0254 (on leave → 311  
 McCord, Sp 47, Bakersfield, CA 93309.

Chuck Lancaster, US Naval PGSCOL,  
 SMC #2328, Monterey, CA 93940

3/31/78  
 seal note  
 in files

# DECEMBER 1977 TIDE

SUNDAY	MONDAY	TUESDAY	WEDNESDAY
6AM NOON 6PM	6AM NOON 6PM	6AM NOON 6PM	6AM NOON 6PM

2 FEET  
1  
0

**MOON PHASES**

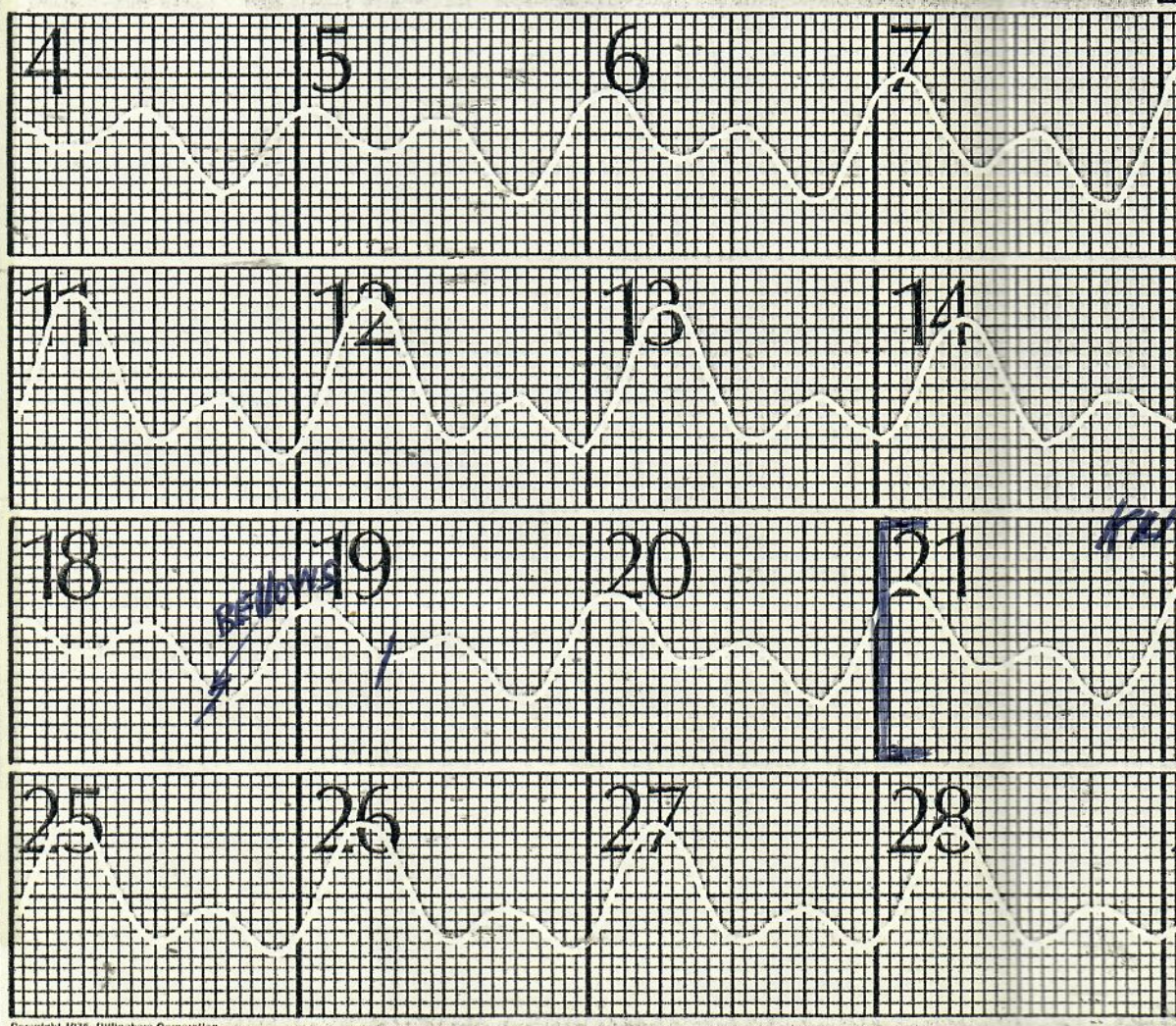
 LAST QUARTER DEC 3	 NEW MOON DEC 10
 FIRST QUARTER DEC 17	 FULL MOON DEC 25

For tide time at following places, add or subtract from Honolulu time.

PORTS	Hrs. Mins.	PORTS	Hrs. Mins.
HANAIE BAY, KAUAI	-1 40	KAUNAKAKAI, MOLOKAI	-0 09
NAWILIWILI BAY, KAUAI	-0 32	KAHULUI, MAUI	-1 48
PORT ALLEN, KAUAI	-0 32	KIHEI, MAALAEA BAY, MAUI	-0 14
HALEIWA, OAHU	-1 36	HILO, HAWAII	-0 59
HANAUMA BAY, OAHU	-0 55	HONUAPO, HAWAII	-0 24
KANEOHE BAY, OAHU	-1 35	MAHUKONA, HAWAII	-0 24
LAIE, OAHU	-1 48	KEALAKEKUA BAY, HAWAII	-0 16
WAIANAЕ, OAHU	+0 16		
WAIMANALO, OAHU	-1 15		



**Dillingham**



Copyright 1976, Dillingham Corporation

# 1977 TIDE CHART

WEDNESDAY

6AM NOON 6PM

THURSDAY

6AM NOON 6PM

FRIDAY

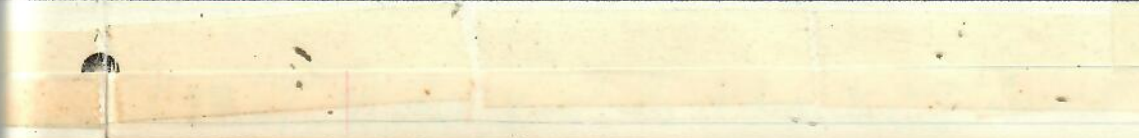
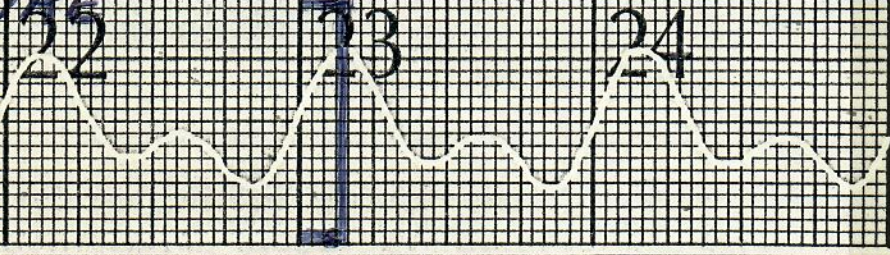
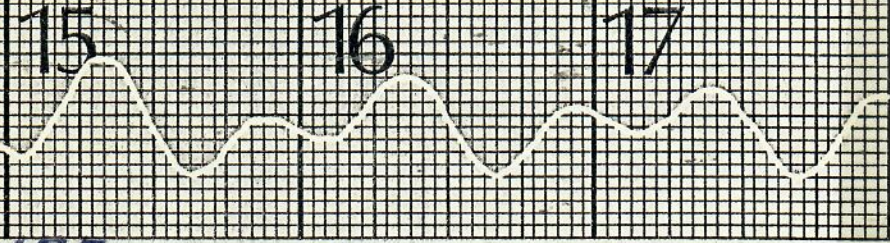
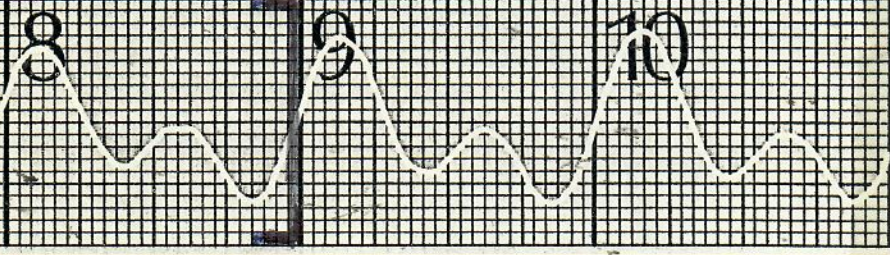
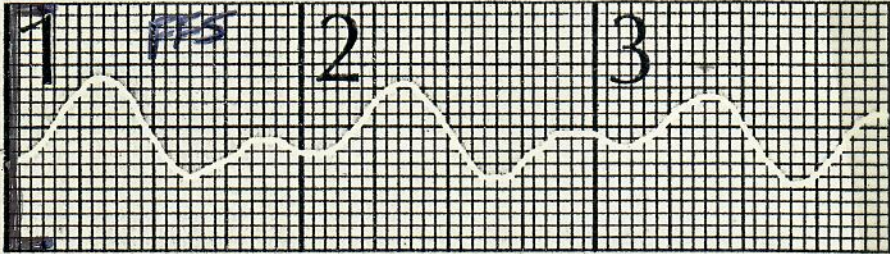
6AM NOON 6PM

SATURDAY

6AM NOON 6PM



Dillingham





EL Roll 12 - and Midway - (some through penguins); <sup>you may</sup> Albio in town;  
 " " 3/4/98 - New antenna area 7; Albatross Area 7; Eastern Is; from Sand;

ROLL NO.

EL 1 ASA 64

EL 2 - 25

ELW 3 64

EL 4 64

" " "

" " "

" " "

" " "

EL 5 ASA 64

" " "

" " "

" " "

" " "

EL 6 2/25

EL 8 2

" " "

EL 9 ASA 26

" " "

EL 10 ASA 64

" " "

" " "

" " "

" " "

EL 11 ASA 64

" " "

EL 12 ASA 64

ROLL NO.	DATES	Photo LOG	DESCRIPTION
EL 1 ASA 64	12/21/77 -		R. Walker c-130 cockpit; WA of Trig. Walker by Kure sign; H46 Chopper; Aerials of ATOLL (WFA); BLACK FOOTED; 12/22 Black footed
// //			
EL 1 -64	1/30 CANTON; 2/14/78	# 21-230	Photos of dead turtles and Crab; Seal; chopper on pod; Green Is from chopper; BFA w/chick - lost of roll → Sand Is, Midway; Kiwda in coffee room
EL 2 -25	2/17 -		EASTERN IS From chopper; 2 shots, Seal through scratched WINDOW; seal w/55mm
ELW 3 -64	2/17		Turtle 2451 caught behind EASTERN, with R. Smeltz; 2/19 - photo of 2178-79 (old 2454-2455) w/worth - Chrus wife.
EL 4 64	2/18		2/20 - Elaine Schmetz; 2/21 photos of Kam w/2458 and jaw and turtle alone. Floating manowar.
MIDWAY	))	))	2/22 - Eastern from S side sand; choppers; Man-o-war; jaegers; Ship departure.
EL 5 ASA 64	2/22		Laysan chick run over; Wave and chopper on chopper; aerials of Green Island and Sand Island; CG group around chopper; Birds in flight with WA. Adult and young WA; 2 Adult seals w/distinctive scars on Green Is; Albatross w/young; EAGLE IN Flight; seal crawling out on beach.
KURE	EL 6 ASA 64	2/25/78	seals on beach; Albatrosses w/young (feeding; white down (WA, SS)
KURE	EL 8 ASA 25	2/25/78	- 2467 juvenile; 2465 juvenile (bigger of two); MANY PHOTOS of XO Fred; JEFF, SARA by SIGN w/2467 and 2465; 2/26 - PHOTOS of birds in antennae fields.
KURE	EL 9 ASA 25	2/26/78	→ photos of Eagle w/fragate; seals; flies on wind; Turtle recovery 2083 - head, eye, neck, go, whole body, Me by sign by SARA; 2/27/78 EAGLE w/TEL; 2471 whole body.
KURE	EL 10 ASA 64	2/27 - 2471	ends of front flippers; 2/28 Babies together; Albatross in flight strong wind - 250 FB 25000 FB-516; Sweet in radio room; Eagle #4; also later in roll; 3/1/78 Eagle resting on runway, Radar reflector; Gooney young in strong wind.
EL 11 ASA 64			me by Kure sign; me with SCUBA; me with 2473 on beach; 2480 w/puller. 2473 w/ruler; 2480 w/ruler; 3/2 photos of Eagle; photo of Laysan killed by Eagle 587-91911; Eagle 3/3/78
EL 12 ASA 64	3/3		EAGLE; Kure crew at departure; Aerials of Kure (To page 40)

WED.  
E 12/21/77

8:45 AM -

DEPART BARBER'S POINT C-130 1345 w/Ron Walker,  
Roger Ernstrom, Cmdr. Sickafosse,  
Seabird report (on Kawai) <sup>from KAM</sup> to R. Walker. Flew to the  
South of Kawai where they had freighter  
under tow - then head toward Kaula -  
can see Nihoa in the distance - passed over  
trawler-type wood boat based at Kewalo -  
over long liner Japanese underway - diverted  
toward Kawai to check on Brighter  
underway - name Rio de Janeiro Maru  
(of Osaka). Flew to Nihoa where  
Ron took pictures. - then on to Necker  
Bank fairly calm, swell noted at West  
Cove, but does not appear to be surging  
through gap.

Noted Report on visit to Kure Atoll  
1969 by Ron Walker, Division of  
Fish and Game.

At 11:45 AM flew over FFS - right  
over inner lagoon at low level, calm, good  
view - nothing noted. Observed back side  
of Whale Skate - no basking turtles seen.  
Photo of Trip - did not get a real good look,  
but no turtles seen. Right over Tern  
Island. Past about eight miles south  
of Gardner Pinnacles at 12:20 PM. Shortly  
thereafter saw a Japanese long liner  
dead in the water - many shark fins  
hanging out.

12/21/77  
Wednesday~ 3 PM  
KURE ONE  
HOPE BETTING  
HONOLULU  
TIME

12/21/77

Consider - interviewing Japanese fishermen Wednesday about presence of turtle parts in the stomachs of sharks that they catch.

~ 3 PM

KURE ONE  
HOUR BEHIND  
HONOLULU  
TIME

Arrived at Kure - met by BM1 Michaels, Mr. Bailey. Seas fairly calm, skies sunny. C-130 departed for Midway ~ 4 PM - will stay there until ~ 1 PM 12/22 at which time patrol to Hancock Seamount, return to Kure ~ 3:30<sup>PM</sup> for night flight to Barber's Point.

→ Noted in C-130 — USCG AIR OPERATIONS MANUAL

Section 3880 (page 3-14)

Titled "Disturbance of Wildlife"

"Commanding officers shall take necessary steps to prevent unnecessary flying over known haunts of wildlife. When it is necessary to fly over such areas, an absolute altitude of at least 3000 feet shall be maintained, if maintaining such an altitude is not detrimental to the mission. Any type of hunting from any aircraft is prohibited"

after transferring baggage to station, proceeded with Ron Walker to go around Green Island, starting at windsock going South.

Tide very low. Very little beach drift present. A few Man-o-war noted

12/21/77 along NE Beach, but generally very scarce.  
 WEDNESDAY Noted one or two SANTHANA.

Noted one juvenile along East beach by exposed beachrock; one juvenile at South Point; <sup>and one before windsock.</sup> on second trip along East beach, noted one SA in sandy area where famous cave/hole is located.

Saw sponge (like commerce type) washed up at several places. Specimen collected for Mark Junker. Also noted some branched-type Codium along West (Lagoon) side of island. Tar globules at North point around to East - also footprints in this restricted area.

Walker reports that he was last here in 1968 or 1969. WIRTZ had a "house" here. Reportedly was working on seabirds <sup>(Boat storage area)</sup> for military use (killer birds?). Suggests that whole Pacific project was CIA - military DOD front.

BMI Michael reports that nesting turtle ~~through~~ <sup>NEW</sup> sand into Scarelas. Will show me site tomorrow. Only one Tiger seen close to beach last summer. One patrolled Sand Spit. NO INJURIES SEEN. Walker reports that he has movie filming of Krudler running down the beach poking seals with a stick to record sep.

12/21/77  
 WED.

12/21/77  
WED.

Observed helicopter Pilot or Co-pilot JEFF CASEY  
first went around Green to the east,  
and over to Sand. I could not see  
if it landed, or how close it got.

My seal count - 5A - 1 - THIS YEAR PUP  
(many more fresh tracks and wallows)  
Ronsaw @ total

Man reported juvenile basking turtle on  
beach, but I saw no evidence.

Observed several birds with backs  
(alone) eaten away. Rats after moisture?  
Did "SPAGINAW" BOOK MENTION RATS?

A few shotgun shells along runway.

Porn movies here for videotape. Report  
brought up by Public TV girl.

Called Gary Means during evening at 2300.  
He will meet Linda in Honolulu about  
29 December. KK meeting tonight. He reports  
that a new antenna is now being built in  
Area 7 - must mover ~ 500 birds. Never  
contacted Giergentanner about this. Apparently  
no turtle taggings or recoveries have  
been made. Lobster paper and  
management plan exists (mentions Skip).

Called Candy Harey -

Called Nancy B-Casey.

Gary also mentioned that student told

12/21/77 <sup>WEDNESDAY</sup> him of seeing 6 inch turtles at NAVFAC <sup>in water?</sup> <sup>on beach?</sup> last summer - person now gone.

12/22/77  
Thursday

At ~ 10:30 PM, walked again all the way around island, starting at wind sock. Used flash light, but did not see any turtles - tide very low. Saw two adult seals, one with recent cut on hind flipper, one with healed scar on back (like one at FFS).

12/22/77 <sup>THURSDAY</sup> Up at ~ 7:30 AM <sup>(KURE TIME)</sup>; sun rises very late - light rain - ground wet - didn't last long - sun came out. Walked to antennae, and to East beach down, cleared trail, proceeded to windsock and back to quarters. Noted a few Man-o-war recently washed in.

Called Harey at Midway - at KK, going to salvage bronze bell. <sup>means</sup>

Doug Bailey - November - saw possible seals copulating - very early morning hours - Female on back like sea otter.

"Boats" on night dive with men saw green floating in surf - head to wave - bit one of the men as he floated in to it.

Bailey has also seen <sup>from ship</sup> loggerheads eating big Man-o-war during blockade of Cuba.

~ 10 AM: Swam from Windsock to South - saw two small untagged turtles - one showed little fear, circled back

DIVE  
1

Went went to  
Wake in C-117  
Wedding

- CB Antennae  
- Shark Bait - lines

47 KURE

12/22/77 a few times to look at me. I did not make  
Thursday aggressive movements. Second turtles was  
seen feeding on bottom - item unknown. Swam  
off quickly when I approached. Do they  
have some fear of seals - or do they recognize  
as not a threat? Lon Walker joined me  
at next sand area. Observed juvenile  
sitting sideways in "famous" hole.  
Swam off quickly, seaward. All  
frightened ones seem to head seaward.  
Along edge of previous sand area I  
collected a Godwin and unknown red  
filament with lots of fuzz.

Boats mentioned. seen many turtles  
floating on surface by buoy during  
very calm weather period.  
After returning to quarters (~12 noon) for  
lunch, I proceeded with boats to  
site where turtle dug around this  
past summer - quite a ways from windrock.  
Hardly any depression present. I dug  
some with shovel - found smooth coral  
pieces and <sup>some</sup> wood junk. Note that  
Ken Henson (C.G. Nonstation, Klamath Falls, Oregon)  
may have noted another nesting site.

Another call to Gary Means, he indicated  
that an AF man reported turtle on beach  
in Area 7 last week - will file a report.  
After checking on nesting site, I

Wright went to  
Wake in C-117 -  
Diving -  
Wedding for  
Also



48KURE

12/22/77 Thursday walked to South point along beach, then  
noted juvenile way out but still inside reef. Walked back to station along lagoon side - saw large male seal with some scars lying up high close to edge of runway.

Consider - Turtles staying out, or partially hibernating at Bellows during winter months.

~4PM Walked to North point along East Shore - C-130 landed ~ 4:45 - returned to quarters via tower. Crew had dinner.

6:15PM Departed KURE for Midway - counted seals on Sand Island (21 total; 27 yesterday). Met by Gary, Curt, Joshua at Midway Terminal; Saw new Midway Islands Wildlife Refuge sign.

Midway XO's name - CMDR Pullan  
Helo Pilots asked to take Kayson to P & H.

~ 8:10PM Depart Midway

Need - (2) photos of Codium <sup>Brought of 2/16/78 trip</sup> for KK club.

(2) Compile all Midway juveniles into Gray data books <sup>completed</sup>

(3) Knit Collecting bag

(4) Line on Throw net

(5) Rat trap (for photo)

(6) letter to Fisher at Midway

Nat. Geo. article on rats?

Check Kenyon 1959 high counts for Kure -  
Favorable environmental conditions brought more ashore?

12/22/77 Gary/Curt have seen Janthinia with Maro-war  
 Thursday ashore at Midway.

"Unwritten Literature of Hawaii"  
 "The Sacred Songs of the Hula" by  
 Nathaniel B. Emerson

"Myths and Legends of the Polynesians" by  
 Johannes C. Andersen

"The Legends and Myths of Hawaii"  
 by Kaka'ana

Report on vegetation of Kure ~ 1961 by  
 Lamoreaux (Walker has copy)

12/23/77 Arrived at Barber's Point ~ 3AM

12/25 Dinner at Ship's house with Chief Art  
 Blume and wife Dorra (and Ed Schellenberger).  
 Blume indicated that Helicopters scooped up  
 glass balls at P&H as recently as  
 two weeks ago. Also that Marine  
 Corps General was there for plans on  
 assault of Eastern Island by  
 several hundred marines - terrorist  
 anti-measure. (What about spits?).  
 Also fire set that burned up some  
 birds. ?

52 MIDWAY

\* Notes - Turtles seek out calm water for resting.

Feb 16

FEB 16, 78 DEPART via C-141 (60th MAW) for Midway w/ Kam - Thursday Kam to join NOAA CROMWELL at Midway Feb 21st.

Take off 0815

His objectives -

- 1.) Conduct tiger shark fishing as per CROMWELL, Memo by me;
- 2.) Examine stomach contents of pelagic fishes;
- 3.) Acquaint himself with shipboard duty / test ability to work semi-independently.

My Trip objectives -

- 1.) Dive/organize at Midway with Coral Kings members to capture previously tagged turtles;
- 2.) Examine for presence and ecological importance of Physalia and Velella at Midway during winter months;
- 3.) See if "burrowing in" occurs at Midway (ie, under cargo pier) during these "cold water" winter months;
- 4.) Check density of Halophila at this "cold water" time;
- 5.) Inspect/interview concerning turtle "nesting" activity at NAVFAC (2nd occurrence reported by HANCO who departed Feb 11th)

Journal of Mammalogy

\* need xerox of Tiger/Turkey Rich page in Ellis Book

Gooney's Elepato

Feb 16, 78

6) Work along at Kure with the  
hope of recovering one of the  
turtles tagged in Jan. 1977 by  
Balays/Yunker

Some miscellaneous notes enroute:

possible titles for shark/seal paper -

- "Behavioral aspects of a Tiger Shark (*Galeocerdo cuvieri*) feeding on a Hawaiian monk seal (*Monachus schreineri*)"
- "Behavioral Observations of..."
- "Observations..."

Journal of  
Mammalogy notes

possible intro statement - "Examination of stomach  
contents have shown that Tiger sharks  
feed on the Hawaiian monk seal ( ), however,  
no direct observations have been made (check H. Reidler).  
as evidenced by stomach contents and certain wounds  
observed (photo here?) (ref - Taylor/Wofter report + oceans).  
on December 6, 1978 we observed a - - - at rear  
adjacent (in shallow water) to the 1600m. islet of  
W-S at FFS in the.

\* need xerox  
of Tiger/Turtle  
Richard  
page in Ellis  
Book

Perhaps concluding statement about effect of pred.  
rarity of seal etc. Note - no blood seen in H<sub>2</sub>O. Not  
seen by USCG several days later - not seen  
days before (?) - emaciated animal.

Gooney's  
Etepaio

Also - Behavioral ( ) of tiger sharks  
( ) feeding on ( ) Albatross.  
"Tiger shark feeding on birds well-known but  
not in literature (?) at Midway - school children"

54 Midway

Feb 16, 78  
Thursday

- Bibliography of Hawaiian marine turtles: Chelonia mydas, Eretmochelys imbricata and Dermochelys coriacea
- Bibliography of the Hawaiian green (Chelonia mydas), Hawksbill (Eretmochelys imbricata) and Leatherback (Dermochelys coriacea) sea turtles
- Use (C E D) at end of reference to show which species covered by citation
- 

~ 1115 over Pearl and Hermes Reef at ~ 25,000' right side of C-141 - Three photos from flight deck by crew member - 55 mm lens (H1MB).  
Touchdown 1145 Midway - 1045 local time

Checked into BOQ -

Walked to Cargo pier, by KK, to <sup>one oil</sup> inter harbor. Lots of beach <sup>soaked</sup>erosion <sup>gooney</sup>

\* ~ 2 PM I visited with Captain Fischer and Commander <sup>Edward</sup> XO Pullen. Pullen/Fischer noted that during some months winds are predominantly out of WEST - <sup>give us a push towards</sup> visited Gary and Linda at school.

Went out to see "seal" Has been there since last Friday. ~ 50' up beach on sand - many photos Roll I.

#6-11 on kaws roll w/w.A. ~ 5 1/2' long

Mark  
SEAL page  
initial  
journal

2/16/78

Thursday

nose overhang, sharp, spiked teeth. Two wounds in chest, two in side. round. Not emaciated. ~~no~~ (at least) yellow tags - Koto type - 5011, 5012. Report that a few days ago two chief dragged seal back to the water by hind flippers - I observed sandy rooting forward.

Checked out three books at library -

"Diving Companions" - Cousteau

"Wild Animals of N. America" NGS

"Nat. Hist. Marine Mammals." V. B. Scheffer

"Check - Endangered Animals of N. America - NGS

- Gary reports that bulldozers working on new antennae covers over gooseys - after he had moved them. Also this week, Islander has goosey death breakdown. Gary removed 5000 three years ago from Runway, but only 3-400 this year.

Note that Swedberg compiled booklet entitled - U.S. Navy - A Guide to Wildlife in the Hawaiian Islands - Pacific Division - Naval Facilities Engineering Command - Pearl Harbor - 2-69

MONK  
SEAL page -  
mother  
growing

Gary reports disposal of ~ 200 55 gal drums of isopropyl alcohol - shoot full of holes said Gary. Many rusted drums of formalin exist.

56 Midway.

KURE

Northern Elephant Seal -

Possible title of article: Mirounga angustirostris

Antarctic cousin  
FIRST Documented Record of an Elephant seal  
IN THE HAWAIIAN ARCHIPELAGO

M. leonia

Note: Distinct possibility of their occurrence in chain - but not recognized when seen. Recall Means presentation - Patricia not recognized

2/17/78 UP ~ 5:30 AM to EM Mess for breakfast  
FRIDAY first light ~ 6:45 AM -

Called John Naughton on MARS at  
~ 7:45 AM "Beth" MARS operator.

Went to Air ops for Helo.  
noted chart -

"Midway Islands and approaches"  
Alan Walked around Sand Island

HH-46A **D**epart for Kure at ~ 9:10 aboard NO 962  
"Sea Knight" orange-gray 150962. other chopper  
921, 151921. Flew out over Spit

Island - 13 seals counted - no turtles.  
Pilot - Jeff Case, Copilot - Lt Fallock -  
Loadmaster (Security) - Joe McLennan  
1500' altitude - mostly cloudy.

Radio Ham -  
CWO MIKE  
NAUGHTON

Three Bands read. at KURE -

Laysan 767-49359x <sup>sent 2/18</sup> EAGLE(?)  
BF 767-52208x <sup>sent 2/18</sup>

LA 737-98267 (rot) <sup>sent 2/18</sup>

2/17/78  
Friday

2/17/78  
Friday

Walked to North Point on Lagoon side - Saw  
eagle standing on end. Yellow/gold large  
hooked beak - brown w/white band.  
When it flies - feathers at end of wings  
turn up.

2/145 - noted low tide - Gold/Brown Alga exposed on  
fringing reef. No big waves or swells at  
South Point. Some Codium clumps washed  
ashore.

\* Note - that when Chopper visits on Friday,  
everyone aboard walks around.

Counted 5A 1SA 14P around  
Green Island.

Burned concrete pier partly exposed at  
South Point. Man-O-War drifts  
at high tide mark of South Point.

Departed Kure; 1:35 PM -  
nice flight around Sand and Eastern.  
photos taken

Later in afternoon walked out and  
saw Elephant Seal again.

Went to club with dive gear.

Noted 28 entries in log since my  
departure in June.

Dinner at Officers Club, afterwards  
visited at Mearns.

but  
visiting  
it

"  
R  
n

AM -  
OK  
Henry



2/18/78  
SATURDAY

up ~ 7:15 AM - breakfast at EM Mess, MARS  
to Lin - operator set up phone on Quarter Deck  
of Jarvis for Coast Guard men. note -

ACKNOWLEDGE MARS network for  
Coms in my project - FFS, <sup>NCS</sup>KURE, <sup>NCE</sup>MIDWAY, <sup>NVP</sup>  
also Amateur Radio - Frigate / Kure.

About 8 AM Gary put up sign on beach  
by Seal - Injured Seal - Do not disturb -  
Gary noted that seal trail started to  
lead to water, but only short ways -  
turned around ended up about same spot.

At ~ 4:45 I viewed seal - nose/head  
burrowed in 1/2 depth - sand on back  
indicative of more sand "flipping" like last  
night. No trails toward beach - staying in  
same place.

DIVE  
1

At ~ 9:25 AM SCUBA off KK ramp out  
to second buoy (-21). Drop off - ledge  
followed towards East. Sunken buoy and  
junk present - lots of habitat "holes"  
(~ 30"), but no turtles seen.  
out about 10:45 AM - noted Halophila -  
and a few strange leaf ones.

KK cleanup at 10 AM

About 1:30 PM to Eastern with John  
Ross, Roger and Elaine.

DIVE  
2

Snorkel back side of Eastern - saw  
two small juveniles swimming free -  
Three under ledges - Caught one in hole  
came out, but Alan was able to grab

2/18/78  
SATURDAY

2451

2452

2453

2/18/78 and hold on - very little struggle -

SATURDAY

S -  $21\frac{1}{8}$  x  $16\frac{5}{8}$

C -  $22\frac{5}{8}$  x  $20\frac{7}{8}$

2451 RFL

2452 RF

2453 LFL

PL -  $16\frac{7}{8}$ "

TAIL -  $3\frac{1}{4}$ "

HEAD -  $3\frac{1}{4}$ "

WT - 48 lbs.

Algal sample scraped from neck area

photos first of roll 4 - (coloration)

2/18/78  
SATURDAY

Johnsons, Craig "birdman" arrived on MAC flight.

Note that birds were bulldozed during new antenna construction - area 7.  
Two antennas - 125' Radius - Telephone poles.

Codium sample collected as beach wash specimen off of Eastern. One large seal noted hauled out on backside.

Returned to KK - collected growths on front legs of lobsters brought in by Dr. Ray.

Dinner later in evening at Mean's house.

2/19/78  
SUNDAYDIVE<sub>3</sub>

Breakfast at EM Mess - to KK in 8:15<sup>AM</sup> out for SCUBA in two boats - Gary, <sup>often Ed</sup> (Drug Councilor), Bekelder, Kam, me. Site one - edge of channel by spit - ledges, holes. Bekelder got one lobster - no turtles seen. Site two - across channel - drop off extending out from inner harbor. No turtles seen. While motoring back we spotted one turtle - Alan jumped from boat, but missed.

Upon return to KK group, Chris<sup>1</sup> notified us that he had caught a turtle last night - Tug side of

2/19/78  
Sunday

2454L

2455R

2/20/78  
Beach  
wedding  
one

PATEH Baird

2/19/78 Injner Harbor - he watched it go in  
Sunday hole - i put on snorkel gear and  
jumped in.

~~2178~~ ~~2179~~ OFF (on too light)  
originally tagged by Bob Burke / Tom Wirth Rusty  
Bucket - coming out of drum. no barns noted. Released KK ramp.

2454 LFL

6/28/77

S - 16 x 13 1/4

2455 RFL

S + 1/4; + 2 1/4

6/28/77

S - 15 3/4 x 11

7 months

22 days

C - 16 7/8 x 15 3/8

C + 3/8; + 1/2

6/28/77

C - 16 1/2 x 14 7/8

HEAD - 2 5/8

TAIL - 3 3/8

tail - 1 1/4

PL - 13 3/8

PL + 3/8

PL - 13

MANY skin barns - weight -  
samples taken

my scale - 22 1/2 lbs

KK w/canvas - 25

mine w/canvas 24

6/28/77 Weight - 20

wt - +5

also caught on  
8/20/77 by KK  
beach by  
Wedding ton  
same measurements.

AM  
tenberg  
Ed

WETHER