

MIDWAY KURE FEB/MARCH 1978
NECKER II - NOV 1977

MTS DEC 17
KURE PECA 177
L. HERMAN - MARCH 1978

BALAZS

BALAZS

1977-78

2 OF 2

2/19/78 ~ 12:30 PM to Eastern Island w/ Rogers,
 Sunday Ray Trivino - others. They let me,
 Alan and Wirth off. Across
 island to South side.

2/19/78

245

DIVE
4

Skin Dive all along reef edge.
 I caught turtle

caught on turn table 146.1 RF resting ^(Originally tagged by me 5/7/75)
 in same hole as
 2451 yesterday 2/18/78. A second tag
 was on right flap.

(Get go by Johnsons before it could be measured)
 They took photo with Binocular along side.
 Alan saw medium size juvenile with
 tag on left flap - thick shell,
 dark body.

Tom
 Wirth saw 3 juveniles -
 one ^{small} at very ^{east} coral cluster before "shark
 pit."

Returned to KK - 4 PM - wind coming up.

DIVE
5

Late afternoon - Kam and J. - full
 length of Cargo Pier - I found one
 small juvenile laying on bottom
 next to piling at the very end -

5:00 PM - Laying/perched
 on silt bottom - but not dug in - no silt notes
 on carapace.

2/19/78 Under Cargo Pier

2456 RFL

S - 16 x 13³/₄

2457 LFL

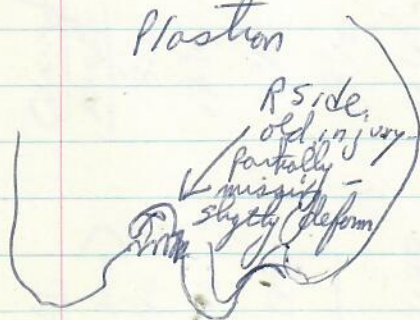
C - 17 x 16

PL - 12⁵/₈Head - 2³/₈TAIL - 3³/₈

very clean carapace (gold) and plastron (yellow-white) -
 "Growth" rings on lamae - appear to be three.
 weight - 21 lbs

PC's look slightly curled up.
 no photos due to late afternoon and rain.

Plastron



both kids have
 healed pieces missing.

64 Midway.

2/19/78 Met Station M.D. - Gary Beermier -
offers stomach tubes. - ^{obtained assortment}
_{on 2/22/78}
Correy Shumaker with USAF is here now
due to storm damage at Wake. - Runway
closed for some time.

Dinner with Gary and Linda at
Ironwood Steakhouse. - good.
Rib eye with fried onions

Note: I spend the most time at those
places which are the most productive

* Note: ^{send another copy of} My tagging instruction Memo to KK

I'm going to get my tagging instruction memo from the command

Midway Tagging since my departure in early June:
 (sheets will also be xeroxed)

1977

TAG NOS.	Curved length	Curved width	straight length	straight surface width	Position	Tail	wt	Date	Remarks
(2113 no good)									
2112, 2114	18 1/2	16 1/2	17 1/4	14	14	3 1/8	30	6/7/77	Box 19 REKELBER BUCKE
2115, 2116	17 3/4	16 5/8	17 1/4	37(?)	17 1/2	3	30	6/18/77	TREVINO Stevenson
2178, 2179	16 1/2	14 3/8	15 3/4	11	13	1 1/4	20	6/28/77	BUCKE, Bush with BUCKE
—	19 1/2	17 3/8	18 1/2	14 1/4	15	3/4 retracted	35	7/2/77	Bob Carlton found dead floating over
2178, 2179	16 1/2	14 7/8	15 3/4	11	13	1 1/2	22	8/20/77	wedding tag KK Beech
2180, 2181	17 1/2	16	13 1/4	14 3/8	—	3	20	9/10/77	
2182, 2183 ^{red}	17	15	13 1/4	14	13 3/4	3	25	1/29/78	PIER
2184, 2185	21	19 1/4	17	17	3 1/2	1 1/2	45	1/29/78	near Running 33
2186, 2187	16	14	15 1/4	12 1/2	12.5	.75	23	2/4/78	away Hambor

Some Books reviewed at the Midway Library →
and Mean's House:

1. Hammond Nature Atlas of America (1973)
A Ridge Press Book; Hammond Incorporated
Maplewood, N. J. - by Roland C. Clement - 255pp.

X 2. Vanishing Species (1974) Time-Life Books,
by the Editors of Time-Life Books, N.Y.
Editor - Kathleen Brandes 264pp.
(Hawaiian Monk seal p104 - 2 fighting photo by L. Acock)

* 3. The Reptiles (1963-revised 1972) by
Archie Carr, and the Editors of Time-Life
Books; Life-Nature Library of New York
(Monk seals and turtles basking at P. & Haines)

(Seen in ad in WILDLIFE magazine Dec 1977)

4. The World of Wildlife
(Published in collaboration with the
World Wildlife Fund) (1977?)
~~by~~ Edited by Nigel Sitwell
with a foreword by Thor Heyerdahl

Div of Time Inc
Time-Life Bk
Rochester, N.Y.
10020

2/20/78
 MONDAY
 Presidents Day Holiday
 - call on MARS to my folks -
 Cromwell came in this morning.
 Dive scuba 6 - morning w/kam Cargo Pier
 Dive scuba 7 - 4-5 seen on South side, none on North side Both sides
 Dive scuba 8 - ~ 4 PM w/kam Harbor w/ KK sides
 Cargo Pier

Seal left during late morning or early afternoon, as per means

Craig informs that bird may be a Steller Sea Eagle.

Dinner at Means with Johnsons and Craig.
 Gary showed slides - some of Wake.

2/21/78
 TUESDAY
 UP ~ 6:30 AM - breakfast at EM
 Mess - MARS call to Lin. Jarvis
 chopper went to Kure today - Ed Seale
 flying - apparently landed on sand spits to
 get glass ball. Jarvis due to
 depart tomorrow morning for Honolulu.
 Regular Kure Toy flight tomorrow C-130.

Checked 5548 13' whale out at KK
 and proceeded to the right of Reef holes
 near reef. Clean water, bright
 coral - not as many fish as previously
 seen.

DIVE 9 - snorkel - Alan found small

2/21/78 turtle slept ~~partly~~ partly under live coral head on
TUESDAY sand bottom -

near Reef Hotel -

2458 RPL S - 15 x 12 1/8

2459 LFL

C - 15 7/8 x 14 1/4

PL - 12 1/8

Head - 2 3/8

TAIL - 3

weight - 13 1/2 lbs

Codum + 1 small coral/sand piece
no skin; small piece sampled from stomach.
barnacle.
Skin alga present - scraping sample taken.

photos of very distinct serrations and
centrally located hard palate protrusion.

70 Midway -

2/21/78 **DIVE 10** - along backside of Eastern
TUESDAY - 1 PM - very calm - low tide - absolutely
no turtles seen. Saw Mandiwai off of
Eastern - photo off of INNER HARBOR.

DIVE 11 - 3 PM motored with Gary,
Kam and Tom Worth to Rusty Bucket to
see where he caught 2178 - lots of
junk in shallow, very cloudy water.
Short snorkel. As departing, we saw
one juvenile swimming fast. Patrolled area.
Lots of Podina present.

DIVE 12 on return to KK, we and Gary
were dropped off at the end of
Cargo Pier - scuba = very cloudy under
pier - I proceeded along drop off which
lead out to first buoy in front of
KK ramp. No turtles seen.

Noted
Asparagopsis
growing on
wooden pier
piling

~ 6:15 PM went to picnic given by
Chromwell. - met Captain again (Ed Galt)
Also Martina, Bob Humphrey (has
been looking at Billfish stomachs at
Honolulu Fish Auction). In Kornerstone, met
Marty - line officers.
Returned to BOG - 8:45 PM. Talked to
Tom HIDA at Kornerstone.

2/22
WED

Monday 2300
KK - 2307
1140

CWO Mike Daugherty KM6BI

2/22/78

WEDNESDAY

MARS to John Naughton, NMFS -
Reports that seal pups tagged at
San Miguel Island in Feb. of last
year - first time they had double tagged.
DeLong was with tagging team. This animal
therefore now a yearling (?).
B. & P. Johnson report seeing photos
of recent "monk" seal sighting on West Molokai,
It had ears.

~ 9 AM Ladd's gear aboard Cromwell.
Small craft warnings up; ∴ no boat
dive. Jarvis left ~ 8:30 AM.

Ed Seale followed in chopper ~ 1:30 PM,
following KURE C-130 log.

Navy ship pulled into fuel pier, ∴ no
pier dive.

Pedaled to green light - South corner
of island - back to runway crossing.
Commercial call to Lin at 2 PM from
BOG.

at Milliondollar dump beach saw drifts
of Man-o-war and Janthina - small dark
purple, as well as lighter larger size.
at ~ 2:45 talked to bombardier ED GELB
of Cromwell. Gave him one of my books.
Reviewed Memo I wrote earlier.

Saw Johnson's, Craig, Kam off
~ 3:30 PM. Plan call for Laysan,
Maro, Gardner Pinnacles, Necker.

Telephone

Means - 2300

KK - 2307

MARS - 725

2/22/78
WED. Report that Palmgren found ^{precious} coral at Nihoa. Not much at Hancock Seamount.

Went to Library and reviewed materials.

Dinner with Gary and Linda at Ironwood Restaurant. Pizza and spaghetti, crackling. Rose. I paid.

Note following:

① - Novel based on Bailey's experiences at Laysan - see Craig (sent him short tailed article) some pages subsequently copied for my files.

② 1pp. Checklist of Land Mammals living in a Wild State in the Hawaiian Islands DFG, DLNR (monk seal - "Seaward Islands, Rarely Visits Main ^{Chain} Islands").

③ 1pp. Endangered Indigenous Birds and Mammals of Hawaii. Reference: Regulations of August, 1973 (updated April 1976) DFG - DLNR [Mentions monk seal].

④ Birds of Midway and Laysan Islands by Bailey. Museum Historical No. 12 (1956?) [Mentions Seal]

got
in
Biblio

Kam on Cromwell 2/22 - BANDS 2476-2479

Midway → LAYSAN ~ 400 miles

73
Midway

2/22/78
Wednesday

(5)

Laysan and Black-footed Albatrosses
by Bailey. Museum Pictorial No. 6, 1952.

(6)

Stepping Stones Across the Pacific
Museum Pictorial No. 3

(7)

Bird Records from Midway Atoll, Pacific
Ocean. The Condor. H.I. Fisher. V67, N4,
1965 - 355-357.

56?)

74 Midway.

2/23/78 up ~ 7:00 AM - breakfast at EM Mess -
Coffee at George Cannon School - Prepared
for Necker talk - to theatre about
9 AM - talked from 10-11 AM - all
grades

At 12 Noon checked out ^{recalms} 55⁴⁸ to Eastern
Island with Shaun Bekelder, Nancy
Casey, and Judy Garland.

DIVE 13

Back side of Eastern - current
running to the East. Saw two turtles
swimming free, ^(plus) and one caught in hole
5' from hole, where previous two were
caught. This is a deep channel (narrow)
close to fringing reef. I got
carried out quite a way over fringing
reef by current - when waves break,
noted considerable chizing growth
of CODIUM. also believe that I
saw several small clumps of Codium
on calcareous rocks well inside of
fringing reef.

After releasing turtles, we watched it
breathe high regularly out to/or over
fringing reef. Instead of going over, in
tunnel left (East) and followed along.

2/23/78 EASTERN ISLAND -
Thursday

S-16 x $12\frac{3}{8}$

2460LFL

2461RFL

C- $16\frac{3}{4}$ x $14\frac{5}{8}$

PL- $12\frac{3}{4}$

HEAD- $2\frac{1}{2}$

TAIL- $2\frac{1}{2}$

Weight- 19 lbs

Sampled stomach with tube several times - small green "needle" and red filaments collected and saved.

Skin algae collected and saved - no barnacles noted.

76 Midway

2/23/78
Thursday note - that Steve Lesch has short
article on Mexican Ridley situation -
from Mother Jones magazine.

Note - Linda Means mention of article
on Cayman farm. Hong Kong Tattler - Dec 1977

DIVE 14 At ~ 4:15, eight bk club divers
proceeded to Inner Harbor -
Harbor turtle Dive - Saw only
one turtle between the two groups
(one group followed the other by 10 minutes).

Chased turtle ^{for ~ 5 minutes} - it was slow - circled
continuously - but couldn't catch -
Roger and other fellow were able to touch
it momentarily.

Roger mentioned that Canberra serrulata
is much denser on "Tug" side.

Cookout Chicken, potato salad
with Gary, Schmets, and (Linda?).

Moved some gear to Gary's in preparation
for trip to Kure tomorrow.

DIVE
1

2/24/78
FRIDAY

Breakfast at EM Mess - Transferred gear to Means - went to flight deck - Ronald ^{USCG} Bandy drove me to pick up gear at KK. ^{First class}

Helicopter departed for Kure - 10 AM - Lt. Joe "Flash" Fealock - Pilot, two guaves aboard. Flew over Sand Islets -

13 seals counted - Mother w/pup on Eastward. Seals ^{Also GOONEYS NEAR WIND SOCK} responded to presence of Chopper - We went down fairly low.

GREEN ISL.
Excluding N point -
10 Adults -
2 obviously pregnant

Mike Daugherty worked Ham unit all morning - Kube MARS - NNN & November Charlie Echo. (FFS - NNN & NCS)

Report that USCG chopper gave rides when here a few days ago. One group spotted very large shark resting at surface at South Point. Photos ^(Sweet) were taken. (outside fringing reef, to the EAST)

USCG
JEFF DEEM

Wood and subsequent diving partner ^{3 months ago} showed me photos of large turtle basking on Sand Island. Male with small splits in seams of PC - 11th marginals. Black shell.

* → Try to get prints.

NO JANTHINA NOTED

I walked along East shore to South Point, to pier on West side. Many Man-o-Wars blowing in on West beach due to SW wind.

DIVE
1

At 4 PM got ride in truck to South Point with JEFF DEEM - snowed out to Wind Sock. In first white sand patch I saw a

78 KURE

with's old shack called
"Birdhouse". Another one
now being constructed.

(13)

2/24/78
FRIDAY

medium size juvenile with ^{size 681.} tags slow
to respond when I approached. Noted
white on eye lids.

2/24/78
FRIDAY

A short time later noted another
smaller juvenile which moved off rapidly.

2462

Near beach house I observed a large
juvenile resting near bottom in depression
(deeper ^{"POCKET"} area) close to fringing reef. It
did not respond when I approached - grabbed
hind limb and transported to
Beach house. - Measured, etc. after
dinner, - 6:30 PM. → p 79

2463

2464

Lots of algae on neck/skin area of hind
quarters ventral. Also small crustaceans
(Sampled scraped and preserved.)
Black coloration carapace/head. Very
few light streaks in carapace.
3-4 indistinct "bands" ^{some} in lamina of
carapace.

(13)

KURE 79

2/24/78
FRIDAY

OFF BEACH SHACK-

S - 22 ¹¹/₁₆ x 19

olly.
2462 LFL

C - 22 ⁷/₈ x 22 ³/₈

ision
2463 RFL

alled
2464 ^{LF}

PL - 17 ³/₄

HEAD - 3 ⁵/₈

TAIL - 5 ³/₈

weight - 65 lbs

Right front flipper short-healed.

8th marginal right indented-healed ^{flattened}

Slight groove in seam between 11th marginal
Right and PC.

Small healed
injuries on Right
hind. ↓

Slow swimming when released.

2/24/78 FRIDAY
 notes:
 Dillingham calendar bird behavior choices - possibilities

1. in Flight
2. Roosting on water
3. Parent with young
4. Young alone / fledgling alone
5. Parent alone / Parent with egg

~10 AM - 11 PM. → walked shoreline around to concrete piers - saw 2 seal.

2/25/78 SATURDAY
 up ~ 7 AM, waited to get MARS call - talked to Mother and Father at 8 AM (through Mainland operator "Marie"). Talked to Lin via Chief Harberg (^{call no.} ~~ITL~~) - ^{NNNN} IKT Harberg and two other Hams were out here a few weeks ago - rap a marathon call session - will do article in QST in 2-3 months - on sale at Honolulu Electronics.

Chief Atwood - will depart first part of April.
 Note: that helicopter ^{Hydrolic fluid.} caught on fire in September (?) - had to bring over C-117 to replace engine. Diving for lobsters took place at this time. Two bombs found in last year. One dragged up on beach on lagoon side. One set off underwater, by Sand Island. Helicopter caught on fire on flight

2/25/78
 Saturday
 10 AM

~12 NO
 DIVE
 2

DIVE

2/25/78 carry explosives.

SATURDAY

10 AM - 12 noon

Walked around antenna field - saw eagle - walked around N point - saw eagle on eye - photos in flight. Noted ~~frigate bird~~ going after him - more like covert harassment - noted dead black-footed adult which may have been from eagle - BAND 737-9991

~12 noon

DIVE

2

Snorkeled along East reef from just before windsock to South point. Tide low. Shallow reef flat.

A short distance before last sand pocket I found a small juvenile slightly under ledge, ^{channel} sand on bottom, in about 4 feet of water. Approached shelter in last sand area from South and found it occupied by a plage juvenile.

Data for these two turtles are presented on the following two pages:

1st successful

DIVE 3

SCUBA out South point reef edge.

2/25/78 just south of East Sand area -
 SATURDAY Alga sample scraped from skin - abundant
 both anterior - posterior ventral.
 Stomach tube sample - small green ^{retained} obtained
 presumably Codium.

2467 LFL

S - $16\frac{3}{8}$ x $13\frac{3}{8}$

2468 RFL

C - $17\frac{1}{4}$ x $15\frac{5}{8}$

⑭

PL - $13\frac{1}{4}$ HEAD - $2\frac{5}{8}$

TAIL - 3

weight = 22 lbs.

11th Marginal light has healed piece out of it.
 R and L tips of front flippers are partially
 missing - rot.

Small gouge on head - some white/yellow
 "scab" material on eye lids.

Roll 8 - photos with tape measure - head,
 eyes, tip of front flippers with tape measure.

Released off WINDSOCK - FAST DEPARTURE.

2/25/78 In ^{same old} shelter at last sand area -
 SATURDAY Alga sample scrapped from skin - abundant both anterior-
 posterior ventral. Nothing obtained from stomach tube -
 wouldn't go in enough.

2465 LFL S - 20 1/4 x 16 5/8

2466 RFL C - 21 1/2 x 19 7/8

(15)

PL - 16

HEAD = 3 1/4

TAIL - 4

weight - 41 lbs.

Scales/lids of eyes white and scabby. End of
 right front flipper partially missing - rot.
 Gouge on head (bigger than ^{on} other juvenile).

Roll 8 photos w/tape; head; eye; red alga
 on skin.

Seem to be ~5 indistinct bands
 in laminae of carapace.

RELEASED OFF WINDSOCK -
 FBI DEPARTMENT

2/25/78
SATURDAY

BACKNOTE - Notes from Midway AR
OPERATIONS Manual read at Ready Rooms.
"Runway at Eastern can be used as an
alternative to ditching - it is ~ 5,300' x 300'.
Kure is 4,000' x 300'.
If fuel must be jettisoned - try to do it
outside reef if possible.

Three employees

Two fellows from USCG Engineering Honolulu are at
Kure to construct a new storage shed next
to BIRDSTACK.

2/26/78
SUNDAY

up ~ 7:30 - Talked to Jim ~ 9 AM - Walked
around N point between 10:30 - 11:45 AM - many
photos of birds in antennae fields.
Question - Do rats kill young albatross, or just adults -
I have only noted adults.

Noted two recently dead brown boobies in "Sandy" area of
antennae field. Red footed - 767-51313X sent
Marked baby band (dead) - 767-51028X/78
Black-footed band (dead (EAGLE?)) - 765-52221X

Noted seal with scar - pink healing wound on
back - photo of many green flies on.

Need to compile list of speculative
theories on seal situation at Kure -
Midway - Pearl and Hermes / All Seewards.

2/26/78 Cold water is deterrent to intensive
SUNDAY underwater studies.

[Back note - C.G. has brought canaries to
Midway in a transplantation effort.]

DIVE #4 With Jeff DEEM and Doc
Started from Windsock and worked almost
all the way to north point - Wind
blowing strong - some rain. Saw
many "pockets" with sand bottom - coral
borders. Saw ^{up DEEM} one medium size juvenile,
head out from under ^(deep and very close to reef) one of these
ledge overhangs. Appeared to be scab
material about eyes. It saw me
coming and swam off. Further along
towards north point, observed a small
juvenile - clean shell, no marks except
✓ in one of the front flippers.
Swam with it for a while, but could
not catch. * Considers that turtles
may not initially be fearful of a
swimmer due to resemblance and
assumed nonaggressiveness of MONKSEALS.
Also considers that turtles appear
to be selectively using ledges that
are on the up current side - that is,
the side that provides the the best
shelter from prevailing current (water
movement).

86(16)

2/26/78 Drove down to South Point and swam ~~to~~ over
 SUNDAY to "popular" shelter. Turtle present with
 head stuck (facing) inward - only hind
 quarters facing out. Data for this turtle
 follows:

photo of mark

caught same "hole"

OLD TAGS - 2083^{OFF}; 2084^{OFF} (algae and coralline cover
 head puncture - no collagen)

2469

Both through
 existing holes from
 previous
 tags

1/21/77 S - 24 x 19
 S - 23³/₈ x 18¹/₂
 S + ⁵/₈ + ¹/₂

2470

SL - 0.0481"

13 months

C - 25³/₈ x 23³/₄
 C - 25 x 23
 C + ³/₈ + ³/₄

PL - 19³/₄"HEAD - 3³/₄"TAIL - 4³/₄"

WEIGHT - 65 lbs

Minor cut/scratch in Second Lateral Left

No clear band present in laminae

(CONTINUED)

87

2/26/78
SUNDAY

Right front flipper tip has prot. Alga
abundant anterior/posterior ventral. Sample
scrapped and retained.

Photos on
roll 9

Right eye has very yellow (scab?) / white eye
lid - also scab material covering portion of
eye itself. Photos close up.

Left eye lid alone has some yellow.

Photo of alga on neck - photo of head.

Photo of old tag before removal.

Some scabs/scales ^{MISSING} on limbs - both
front and rear.

Released off windsock just before sunset.
Slow departure.

MAN-O-WAR noted on East Beach - strong wind.

2/26/78
SUNDAY

Consider ability of turtles to back up out of holes/ledges - reverse. Relate this to belief that turtles cannot apparently reverse on land.

Also consider that when I capture juveniles - and bring on land - this may be the first time ashore since departure as a hatchling. Appears to do well.

NNNØ-NWJ ENEWETAK - M.I. called at 8:15 AM

Consider - Abrol tags ^{may have} retarded growth?

Note:

Some instructions for MARS unit SWAN 7000 with Swan Mark II Linear Amplifier - Systron Donner Frequency Counter.

Turn to TUNE - Adjust P.A. GRID for desired R.F. Watts (100 for going into Linear, 350 for "Barefoot" Transceiver alone); Adjust P.A. Plate to point of dip in needle (needle on Drake Wattmeter Model W-4); Adjust FINE LOAD for point of dip in needle; Adjust Car. for low point in needle.

Some MARS Lings: "on Frequency" "Standing by on Frequency"

ME-4 Freq. 14.385 MHz - USB/FREQ. COUNTER - 8.883500
LSB/FREQ. COUNTER - 8.880200

2/26/78	ME-5	FREQ. 14.470 MHz	USB/FREQ. (8.97500) 8.968500	LSB/FREQ. 8.965200
SUNDAY	ME-6	FREQ. 14.480	8.981500	8.978200
	ME-7	FREQ. 14.7615	9.261500	9.258200

"Calling any station Honolulu/West Coast"

2/27/78
MONDAY
Up ~ 7:15 AM - ~ 8:30 AM phone patch
to Gary (George Cannon School - 683) and
Air Terminal (second class in charge) for MAC
reservation Saturday, March 4th.
- noon - Called ^{CWO} Tim Harris - ME-6 FFS →
He reports that during a recent island
visit 6-8 baskets were ^{each} noted on
EAST, W-S and TRIG. Will include
in report that will be cc to me
like earlier one.

subsequent
note by
him in
files.

Also Tim reported that on weekend of
February 11, 1978 an apparently adult
seal hauled out on sand bar on
end of island was bitten off
approximately from belly to top of back.
Track/Chaul marks seemed to
indicate that animal had crawled
up on its own. CG men buried
seal with tractor on bar. Note
that this bar shifts from season
to season.

2/27/78
MONDAY

● EAGLE NOTES: Eagle seemed easier to approach in truck. Feather missing from left wing. Report that it was soggy wet, bad shape when it arrived. Feather still looks kind of shabby. (First reported to me via mail on 2/14/78)

Helicopter came today ~ 10 AM.

DIVE 5

With Schultz, from wind sock to South Point - observed two small juveniles, both swimming - very possible that this was the same turtle twice. On second observation, noted that turtle may have been trying to settle into space where 2467 was captured on Saturday 2/25/78. This is a sand channel with ^{low} dead coral ledge overhang on each side. During this dive I also observed 2083 ~~2469~~ (2469) swimming free. Checked "popular" shelter - nothing inside - however, lobster molt carapace on sand outside -

CONSIDER: possibility that turtles dig in sand underwater - i.e., under ledges. This may account for sand/silt found on carapace of turtles.

~ 4 PM attempted SCUBA at South point - current too strong. "Bots" Tommy Michaels spotted looking for

2/27/78 out turtle at west end of South point beach.
 MONDAY This turtle was not here one hour ago, as we
 walked by area. As I approached, turtle showed
 no alarm. When I touched hind quarters, it just
 hauled up more. Setting - sun this quadrant - ∴
 (17) turtle trying to get warm?

2471 FL S - $18\frac{5}{8}$ x $15\frac{1}{2}$

2472 FL C - $19\frac{5}{8}$ x $18\frac{1}{2}$

PL - $14\frac{7}{8}$

HEAD - 3

TAIL - $4\frac{3}{8}$ "

WEIGHT - 36 lbs

Ends of both front flippers partially missing,
 some healing evident, but scabs, ^{yellow} and slight bleeding
 present. photos of animal last 2 on Roll 9. Ends
 of front flippers - on beginning of Roll 10.

Left hind section of carapace near PC
 shows slight healed injury -
 Thick alga Anterior/Posterior ventral - sample not taken.

RELEASED AT WINDSOCK - SLOW DEPARTURE.

Stomach tube sample attempted
 twice - nothing obtained.

2/27/78 - NOTE - Turtles seen at Midway have not
 MONDAY been afflicted by end of flippers rot
 or eye scab problems.
 Possibility of this, maybe, being caused
 by certain fish "biting" turtles.

"Bots" reports that there is a hole/
 depression area on the other side of
 main channel - water is very shallow on
 reef flat - but drops into protected area.
 Sort of a double reef effect - sounds
 like habitat at Runglanu - "horseshoe".
 This is the site where Bots saw very
 large turtle on coral head while out
 with Hobson and associate.

Blow sand conditions exist on Green
 Island at times. This apparently has
 "blown-out" vegetation in certain areas.
 It has also apparently piled up
 mounds of sand. Consider effect of
 blowing sand on adult and pup eyes - and
 basking turtles.

Bots - notes that during his _____ months
 no big sharks were ever seen inside
 the lagoon.

* Sarah reports that MK3 from Texas has
 taken 5 turtles during her 6 months at
 the station. one big shell on wall - roast

2/27/78
Monday
Turtle pieces on sticks at Barb's.
Apparently takes them with a spear. - later
report from Ltjg Bailey that Dick Beers
told him in Honolulu that they
have a license.

2/28/78
TUESDAY (531-8414)
UP ~ 7:30 AM - MARS to Lin at work
at 9:30 AM through NNP-MHX.

LAYSAN (ALBATROSS) 697-22311x ^{along 3/}
" " 767-47668x ^{runway 8/78}
^{antennae}
^{field}

MARS to mother and father through
MET El Toro Marine Corps Base, Calif.

about ~~1200~~ ^{1200 PM} walked through antennae
field - photos of birds - turned back due
to black rainclouds approaching.

DIVE
6 ~ 11 AM - with Bots to South Point.
SCUBA out along reef edge - strong surface
current - ^{but} good underneath. Good visibility -
lots of fish, but no turtles seen. This
can also at times be considered a sheltered
protected area from strong waves.
Subsequently snorkeled out to coral
head on lagoon side indicated by Bots
to ^{possibly} have a turtle nearby. Noted good
overhang ledge with sandy bottom.
Also checked "popu'ai" shelter - nothing.

2/28/78 TUESDAY Many Man-o-war coming ashore at S Point -
 Collected some off beach - rinsed off sand and frozen.
 A few frithia (no animals inside) noted on East Beach.

Consider possibility that Man-o-war sting seals / turtles. eyes?

DIVE
7

With Scott Jabuy from Florida near Alabama border.
 ~ 4:30 PM - from Windsock to the North. Check many "sand hole" depressions -
 Noted the added depth of those where turtle was sighted with Jeff Deem on 2/26. ~~SWAMP~~ Try to locate these sites. In aerial photos of island.

Following this dive we drove to South Point. I checked "popular" site - nothing. Observed four juvenile feeding on a large raft of Man-o-war ~ 1/2 distance off South Point.

→ Eagle - seen roosting in ^{by quarters} ironwood, North Point on sand beach, Rock off lagoon side of South Point, on runway where choppers land, on runway about halfway down.
 [at times, Messerschmitt, near North Point.

2/28/78 observed turtles around Man-o-war float,
 TUESDAY apparently feeding, until just before
 sunset.

(Back note - 6 Part program
 - 2 Part approach

NNNφ - UYH (WB6-SLA)

up - weekends 0000Z → 2PM Hono

days 0500Z → 7PM

Halbert E. Johnson, 594φ B Gannet Ave.
 Ewa Beach 967φ6

* note - That turtle field work is difficult on
 home life.

3/1
~~2/28~~/78
 WEDNESDAY

UP - 7AM - 10AM drove to
 South Point, saw eagle on runway.
 Made observations at South Point -
 only dried up Man-o-war from last
 night - no fresh ones. No turtles.
 Through binocular, I saw green "depressions"
 areas in reef not too far to the west
 of South Point.

Laysan Albatross - in cut near runway -
 587-85765
 737-98261 3/8/78

1PM - lunch - King Crab Salad -
 Drove to S Point several times in
 truck.

← NO SKIN BARNACLES, as per other Kure turtles →

3/1/78 SCUBA out Southpoint reef edge
WEDNESDAY Sarah and Jeff on shore. No turtles seen - Water conditions

DIVE 8 pretty good - tide low, reef exposed (aggregating Con. etc.)
Snorkel to "popular" shelter - nothing there. Snorkel to adjacent "popular" channel ledge - caught medium size juvenile, as follows: NO injured or signs of pathology

2473 RFL

S - 21 3/8" x 17 1/8" (at 6th marginal)

2474 LFL

2475 LFL

C - 22 5/8 x 20 5/8

(18)

Pl - 17 3/4

HEAD - 3 3/8

TAIL - 4 5/8

3/17/2020

NOTE

WHERE'S 2476, 2477, 2478, 2479?
WEIGHT - 49 lbs

12 MARGINALS ON EACH SIDE INSTEAD OF 11. 5 Post oculars ^{on each side} instead of

Blue sea

Green algae on plastron, red on gills/posterior-ventral. Sample scraped/retained. Stomach tube sample (juice only) retained. Photos on Roll 11. Paper Test: PH 6 after frozen

3rd central -



5th central - (divided) split in two →

appears longer than a normal one

Released by windsack just before sunset - med. to fast part.

3/1/78 ^{→ north side of WINDSOCK}
 WEDNESDAY Small juvenile caught at same deep pocket/overhang
 close to reef where turtle seen on 2/26/78 - J
 After grabbing a hold of shell, it took perhaps
 30 seconds for struggling, active swimming to occur.
 The turtle opened mouth wide and repeatedly tried
 to bite me while swimming it in.

S - $18\frac{1}{2}$ x $15\frac{1}{4}$

2480 LFL

2481 RFL

C - $19\frac{1}{2}$ x $17\frac{5}{8}$

(19)

PL - $14\frac{3}{4}$

HEAD - 3

TAIL - $3\frac{5}{8}$

weight - $30\frac{1}{2}$ lbs
 only marks/pathology is very slight and missing
 from each front flipper. (Mostly well healed,
 photos on Roll 11. Note sand/silt stuck
 in light algal mat on turtle's carapace.
 Green alga on plastron, red alga anterior/posterior
 ventral. Stomach tube sample (juice only?)
 paper test
 PH 7

Released by windssock just before sunset - sbw to med. depart

3/1/78

WEDNESDAY

NOTE: Kure appears to be one of the best sites for attaching a small helium filled balloon to a medium size juvenile. Consider using a break-away line, perhaps electronic gadget controlled.

Note - Today, sometime between 10 AM and 3 PM a pup was born on lagoon side of island near radar reflector. Eagle started to roost on top of ^{shed} radar unit reflector. Consider naming new turtle shack. Have a small sign made for above the door.

Report that reflector may be torn down.

Today I observed two juvenile seals that could be last summer's/year's pups. one has tar (black) stain on belly.

Many Coast Guardsmen were understandably anxious to get photos. Brief write up of mineo, would be useful as a friendly information bulletin.

~ 9 PM Patch to Lin through MKT Honolulu.

10-11 PM - Walked from pier around to windsock - tide appears to be up or coming up.

3/2/78 UP ~ 7:15 AM - Patch to Gary N.P. Drove
 Thursday twice during morning hours to Spout -
 strong southerly wind - lots of Man-o-war
 drifts present. Collected some Janitha formosa.

Note: - Send Bots news clippings
 Forms to Jeff Deem

Call from NES Tim Harris - FFS schedule
 as follows:

April 1, 78 - civilian log flight
 " 10 - Mallow depart for FFS
 " 26 - civilian log flight
 Compensatory leave people have been going back
 on buoy tender.

KURE - C-130 April 7-8-9 C-130 Kure
 " April 19-20-21 Bots leaves -
 Hancock Seamount

~ 2 PM strong wind from South - went to
 South Point - very rough waves coming
 in. observed at least 4 (4) juveniles
 actively swimming close to shore.
 Lots of new and old Man-o-war -
 Caught two juveniles from shore
 using short handled scoop net.
 Data for largest one on following page:

3/2/78
Thursday

Scoop net - South Point

2484

S - 20" x 16 5/8"

2485

C - 21 1/8" x 19 7/8"

(20)

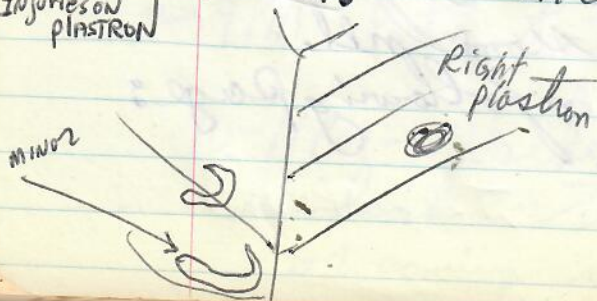
PL - 16 5/8"

HEAD - 3 3/16"

TAIL - 3 3/4"

WEIGHT - 47 lbs

Dark surface / with some yellow streaks -
 Callous or scar tissue at end of plastron
 Red alga anterior/posterior ventral - no sample
 taken. Green alga on plastron - no sample taken.

Injuries on
PLASTRON

Stomach tube sample -
 blue particles (man-o-war)
 in blue bottle. (combined w/
 2482-83)
 paper
 test PH 6

NO PHOTOS

3/2/78
Thursday

Scoop Net - South Point

2482 RFL

S - $17\frac{5}{8}$ x $13\frac{3}{4}$

2483 LFL

(21)

C - $18\frac{5}{8}$ x $16\frac{3}{4}$

PL - $14\frac{1}{4}$

HEAD - $2\frac{7}{8}$

TAIL - $3\frac{1}{4}$

WEIGHT - 28 lbs

Right front

← partly missing - healed.

Link, healed injuries on left front, but flipper end intact.

Small barnacle on neck. stomach tube sample blue particles (Mayo-wan) combined with 2484. Skin algae red - anterior posterior ventral - green algae on plastron - no samples taken.

ET Chief - MR. LARSON

O. DAVE Sweet

3/2/78 Laysan Albatross -

Thursday

587-91911x ^{sent 3/8/78}Eagle killed this bird by windsock -
photo on roll 11;

left Bots one shark hook and 100' cable.

3/3/78

FRIDAY

up ~ 7:15 AM - packed gear in prep.
for Helicopter. Talked to MARCUSon Ham MARS - ~~NNND-NCA~~ ^{arrived in NOVEMBER} - ^{BOW IN} ^{TWO TIME} ^{N&B}CO's name Lt. Art French - very
friendly - said they would welcome a visitor
for one week - More flights coming up due
to construction. Helicopter arrived

~ 11:15 AM -

Midway legal officer:

Ltjg David Schwendiman

LTJG, JAGC, USNR

USNS Box 2

FPO SF 96614

note - Schultz gave me note from bottle
found at South Point.Made 3 trips to S Point during
morning - no turtles seen offshore -
no Man-O-War (grow). Collected
Man-O-War for formalin.

Gave Bots a hook and 100' cable.

3/3/78
FRIDAY Also during morning I found a "slow" rat - close-up photos taken.

Paish Port of Bandon bill and food bill - total - \$32.xx

Circled out over Hoie Maru after 1:40 PM departure - observed some green spots in fringing reef. Photos taken of green island. Three GA buidlers left also on flight. Circled along reef to Hotel at Midway. Saw SA dive inside reef near here. Observed green holes - Gary says that some of these have caves leading out. Photos of Midway.

Gary met me at airport - got ride to BOG. Went shopping at exchange. Photo of albino young ^{MARS to LIA}. Dinner with Means at Ironwood restaurant.

3/4/78
SATURDAY ~ up 830 AM - Carried Roger's SCUBA bottle to KK. Gary and Bob were cutting off locks cleaning out lockers. Gary will write article on tagging turtles for the Islander. Bob gave me, Gwipel gits for regulator conversion. Must be cleaned - soak in vinegar. Gary could bring me - CO₂, slip,

3/4/78 ate [#] 1.65 brunch at AM mess. Packed gear and transferred to Flight deck - 9 pieces total (including Steve Smith's Coral). Egony Bird figurine present from Gary and Linda. Talked to ABMC (ABCMD) Art Blum -

* Two girls working in his office would like ^{several} prints of Midway -

Art
9/15/78
[Sn Kathy Durnery - Sn Abby Wallace
Box 20 USNS FPO SF 96614

also, art would like a frameable print of Kure Eagle - sent 4/16/78 8x10

Art drove me through Area 7 - saw construction of ^{new} antennae - two field - 125' radius - HEC (High Explosives) stored in area. Captain made it off-limits. Art said that 200 ²⁰⁰ marines will come in April aboard C-5A w/4 Huey Helicopters to do assault terrorist training on Eastern.

* Check with Skip about new engine available on Midway for pick-up, also check with Art about flight suit and gloves.

TO Terminal - 4:15 PM; flight came in about 4 PM - depart 4:45 - Takeoff to the West; cruising altitude ~ 37,000' - flight time 2h 30 min reported.

3/4/78 Note - That on Sunday 2/26 article appeared Saturday dealing with observations made at Midway Lackawanna, 1867.

A Second Set of Pliers and 681 INCONEL tps Numbers 2551-2575 turned over to Gary Means for KK use.

Need - xerox patch for KK bulletin board.

Check for emblem patch quotation at:

Global MFG Corp.

Dweir's Accessories

P.O. Box 15307

Milwaukee, WI 53215

Note - During week I was on Kure, Joe McHenry saw 4 turtles at one time off seawall at Green light (while looking for fishballs).

- Bill at Koralkings -

11 hours boat use - \$8.25 payable to club

Custom's Form - GPO-1974-536-608

article

"Ins Er A Belau" - by Frank Quimby
(Mentions that salt water grocs are known to eat "turtles"). *The New Pacific*

Jan-Feb 1978 V3 N1 Issue #7

P-16-19.

3/4/78
Saturday

Palau only island group in Micronesia that has crocs. Two species - Estuarine (*Crocodylus porosus*) ["salt water croc"]; New Guinea - (*C. novoguineae*). [freshwater type farther up rivers and in the lakes of the large island of Pabeldaob, freshwater a recent introduction, possibly brought to the islands during the Japanese Mandate period, 1915-45.]

∴ - Make reservations for Gary and Linda (18-24 months) ^{ok}
Marina or Dyraby, #18-25. or Reef Farm

Elephant Seal Info from Gary

"Found Fri. 10th Feb. 0-Beach
5011 5012 Tags. Two wound right side
Two wounds chest area. Found back
on EM Beach Sat 11th.
Dropped into water Sun 12th after
much harassment. Spuk on Beach
16th. Stayed until 20th Feb."
Also included color slide of seal with
head in the air.

C-141 landed at Hickam ~ 8:30 AM. local time

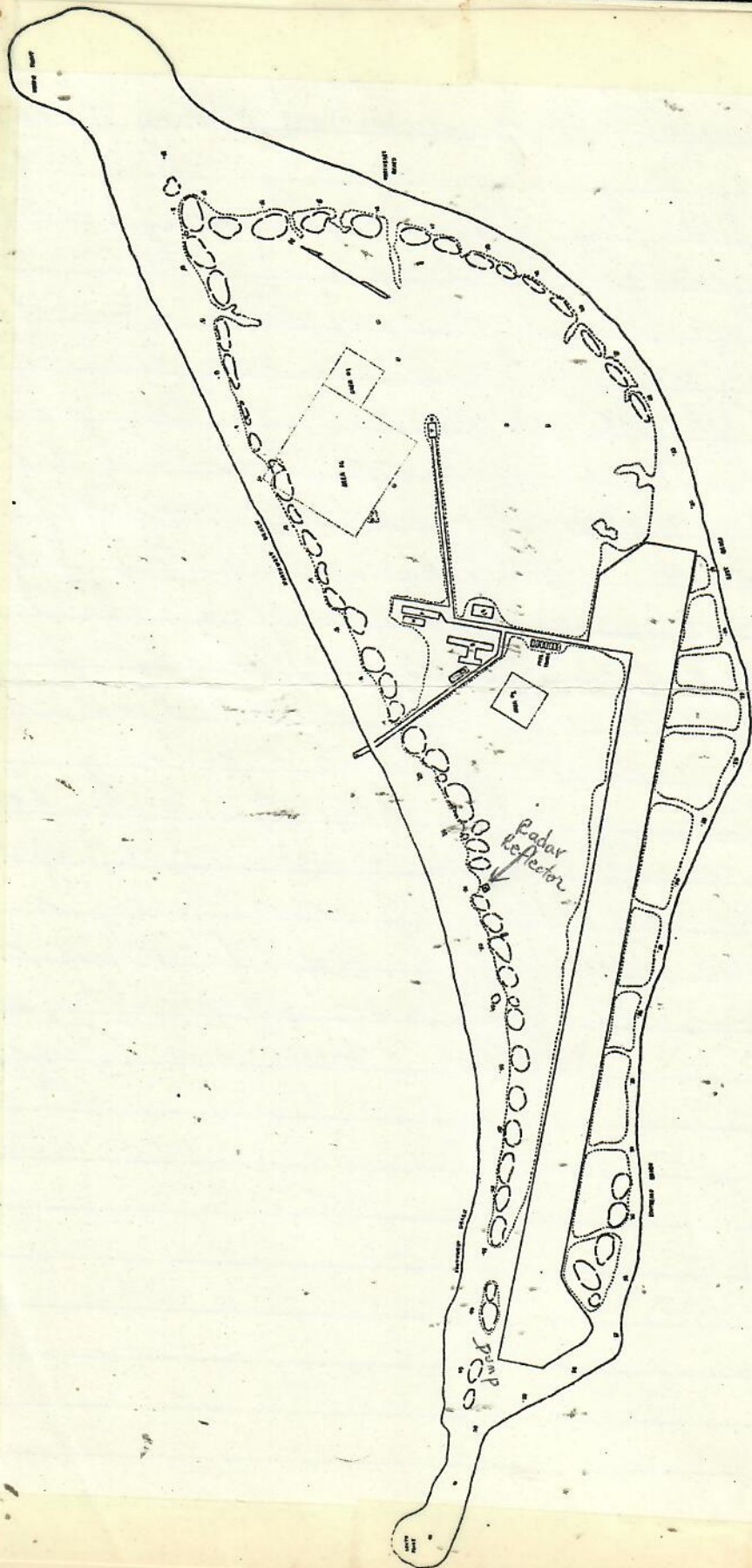
Tar in mouth in last swalker scoop netted
juvenile

3/21/78 Eagle reported to be on end of Midway runway this date.

3/25/78
Saturday
Talked to Hospital M (medic) / (1st class) Marshall Deasy at MAC terminal - he has been at Midway since summer of 1975 - in ^{late} July or early August he was diving off of NAVFAC and saw a 10-15' long male elephant seal swim over them - it did not display alarm - He was very positive of observation mentioned specifically the long proboscis. Brown also said something about seeing elephant seal off of Eastern Is. - but Deasy did not really believe him - at least was uncertain of his report.

* - Also in either August or September 1975 he caught a "one-armed" - 2016 green tagged by VH - it was lying on the bottom just off end of million dollar dump. This was presumably the one I chased down and tagged.

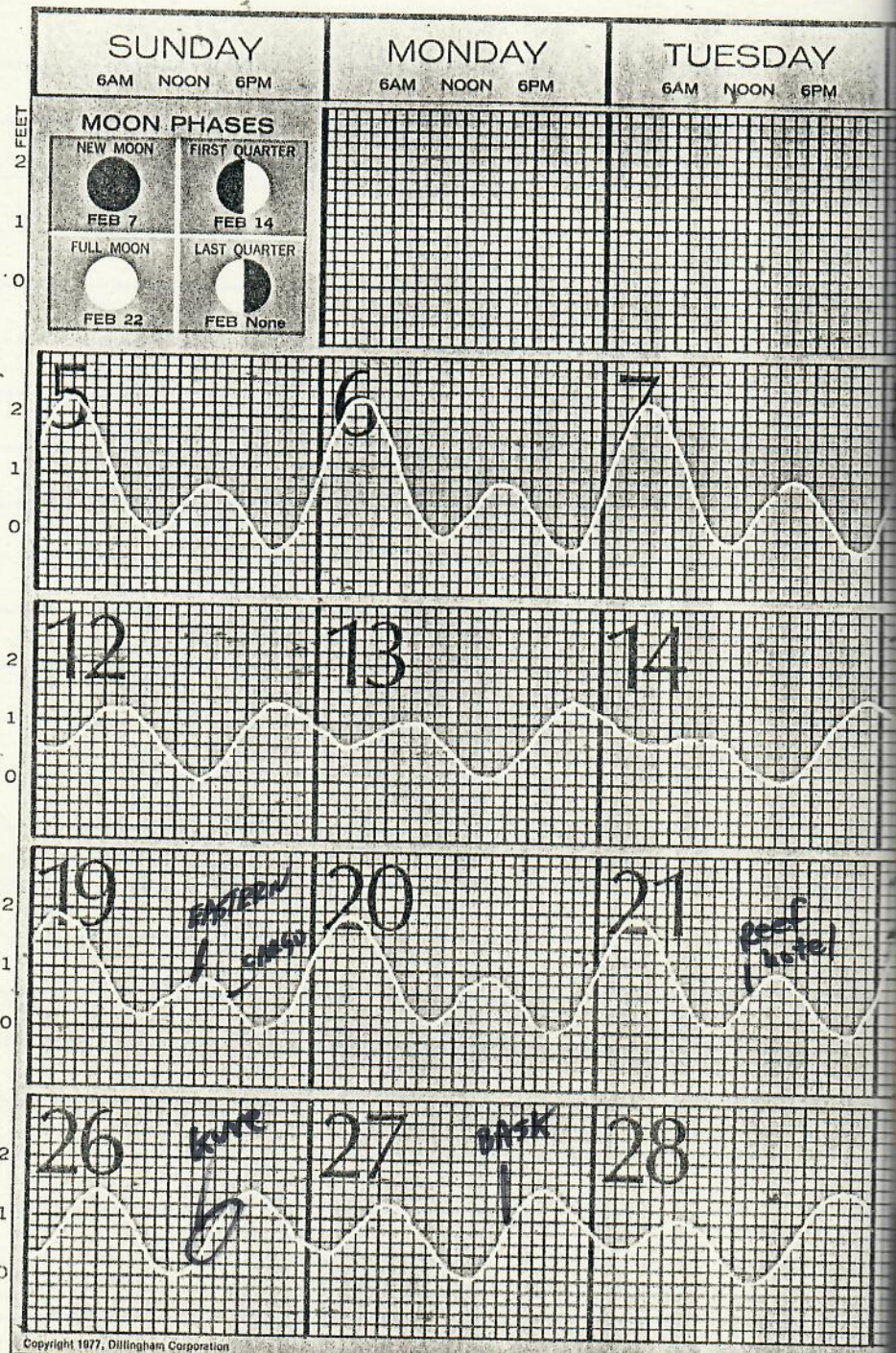
GREEN
ISLAND -
KURE
ATOLL



GREEN ISLAND KURE ATOLL
1 mile approx. 1000 feet
width

FEBRUAR

GREEN
ISLAND
KURE
ATOLL



*ENTER
SUNSET*

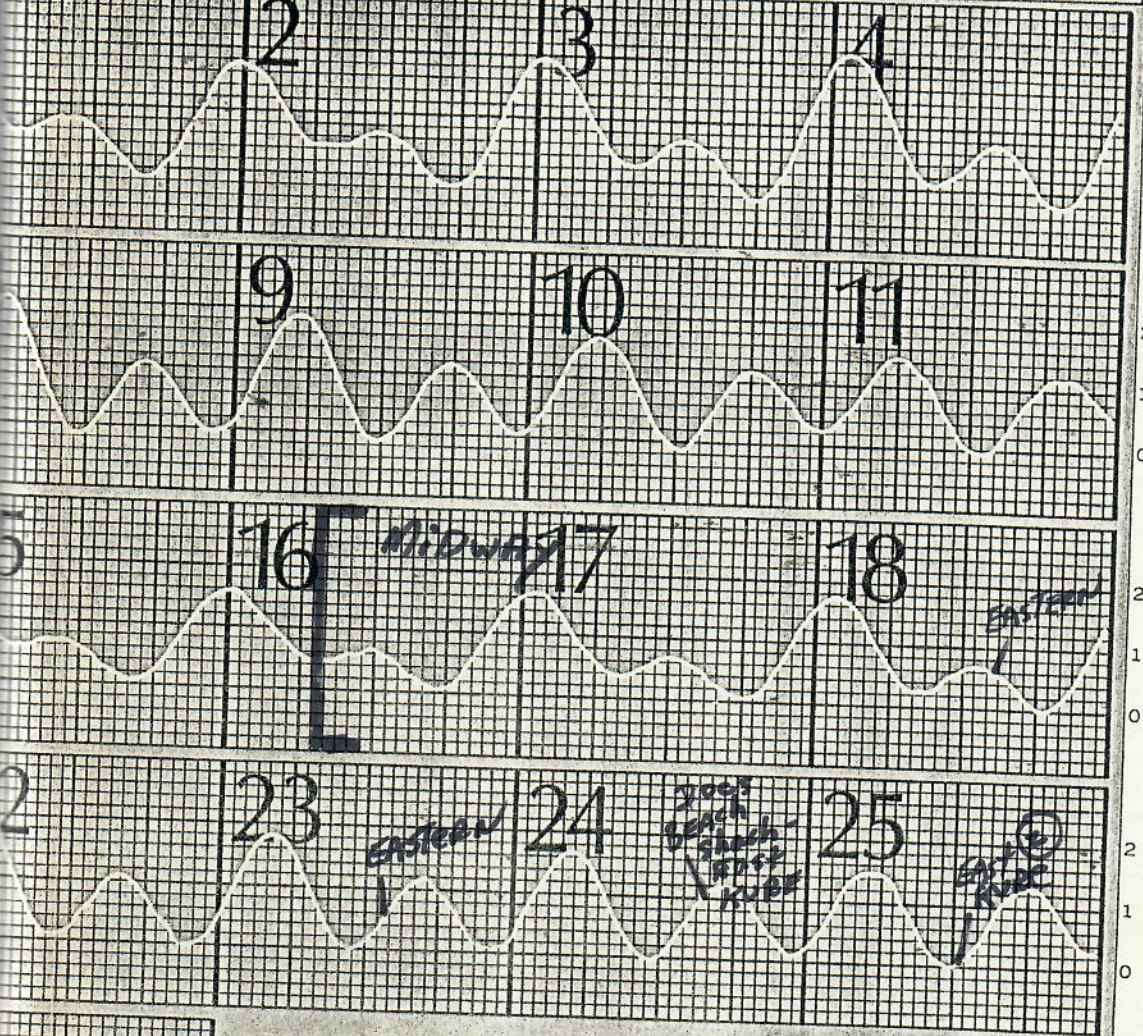
*Reef
Tide*

KURE

BASK

1978 TIDE CHART

WEDNESDAY 6AM NOON 6PM THURSDAY 6AM NOON 6PM FRIDAY 6AM NOON 6PM SATURDAY 6AM NOON 6PM



For tide time at following places, add or subtract from Honolulu time.

PORTS	Hrs.	Mins.	PORTS	Hrs.	Mins.
HANAIE BAY, KAUAI	-1	40	KAUNAKAKAI, MOLOKAI	-0	09
NAWILIWILI BAY, KAUAI	-0	32	KAHULUI, MAUI	-1	48
PORT ALLEN, KAUAI	-0	32	KIHEI, MAALAEA BAY, MAUI	-0	14
HALEIWA, OAHU	-1	36	HILO, HAWAII	-0	59
HANAUMA BAY, OAHU	-0	55	HONUAPO, HAWAII	-0	24
KANEOHE BAY, OAHU	-1	35	MAHUKONA, HAWAII	-0	24
LAIE, OAHU	-1	48	KEALAKEKUA BAY, HAWAII	-0	15
WAIANAЕ, OAHU	+0	16			
WAIMANALO, OAHU	-1	15			



Dillingham

GREEN
ISLAND
KURE
ATOLL

SUNDAY	MONDAY	TUESDAY
6AM NOON 6PM	6AM NOON 6PM	6AM NOON 6PM

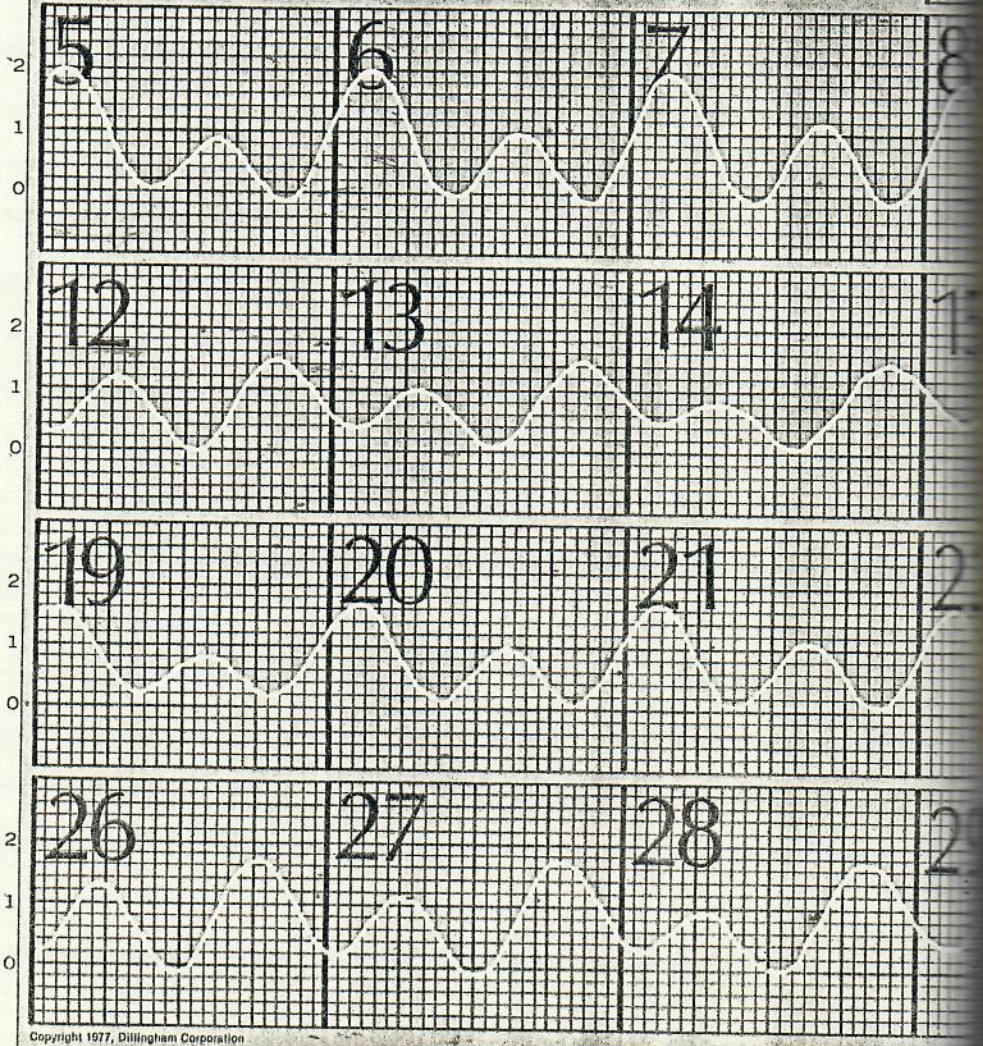
MOON PHASES

<p>LAST QUARTER</p>  <p>MAR 1, 31</p>	<p>NEW MOON</p>  <p>MAR 8</p>
<p>FIRST QUARTER</p>  <p>MAR 16</p>	<p>FULL MOON</p>  <p>MAR 24</p>

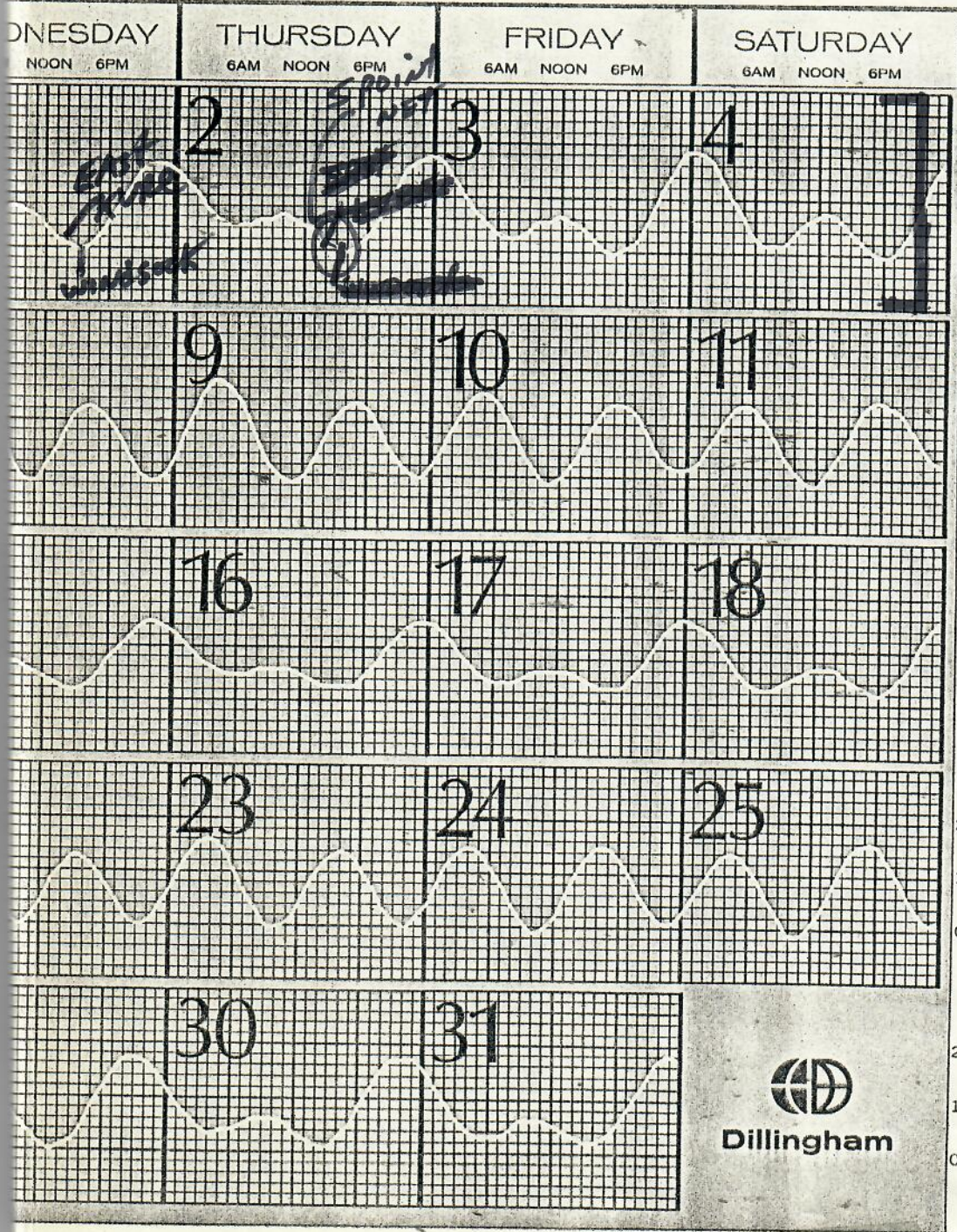
For tide time at following places, add or subtract from Honolulu time.

PORTS	Hrs. Mins.	PORTS	Hrs. Mins.
HANAIE BAY, KAUAI	-1 40	KAUNAKAKAI, MOLOKAI	-0 09
NAWILIWILI BAY, KAUAI	-0 32	KAHULUI, MAUI	-1 48
PORT ALLEN, KAUAI	-0 32	KIHEI, MAALAEA BAY, MAUI	-0 14
HALEIWA, OAHU	-1 36	HILO, HAWAII	-0 59
HANAUMA BAY, OAHU	-0 55	HONUAPO, HAWAII	-0 24
KANEOHE BAY, OAHU	-1 35	MAHUKONA, HAWAII	-0 24
LAIE, OAHU	-1 48	KEALAKEKUA BAY, HAWAII	-0 16
WAIANAE, OAHU	+0 16		
WAIMANALO, OAHU	-1 15		

2 FEET



78 TIDE CHART



5
h
led
d
h
ter.

l

3/21/78
TUESDAY

GK
I:
K
A:

Three greens that have been at Kewalo facility of Louis Herman, with porpoise, were transferred out on ~2/17/78. One went to Whittow's facility for basking studies; the other two were held at NMFS dock-side lab until my return from Midway/Kure trip. With assistance of Andy Dixon, Walter Ikehara, and others, turtles were loaded on ERiders and released ~3:30 PM near Diamond Head Buoy. Both stayed in immediate area for awhile, diving 10-15' and joining up after periods of separate "tumor removal" turtle last seen swimming into waves toward Diamond Head.

310PSY
RTLA 1883

"NO VIBES FOUND"

2486 RFL

2487^{RF}

S → 27⁷/₈"
70.8 cm

x 22¹/₄"

C → 30"

x 26³/₄"

HEAD - 4³/₈"

PLASTRON - 24⁵/₈"

TAIL - 7"

3/21 ^{cont}

→ This turtle had a very large Tumor growth on the underside of left front flipper - Tissue ~~tissue~~ samples were biopsied close to stalk and ② on tumor itself. Nylon line was then tied tightly around stalk, and tumor removed with scalpel. Bleeding occurred, however, not as much as expected. Not more than one pint (max.) of blood lost. Excised tumor preserved in ~30% formaldehyde - 70% seawater. Thin tissues ① and ② preserved in (FIXATIVE) - 20 cc 8% glutaraldehyde stored under N_2
 20 cc filtered sea H_2O
 S-collidine > several drops of
 1.0N HCl > each to buffer
 solution. to final pH 7.4.

Wound continued to bleed - seawater poured on during dissection - clotting in pool occurred fairly fast - cotton put on wound, and wrapped with gauze - tied. left on limb when released.

Photos 1-10 of release on boat - 2486 with calipers.

Note "new growth" band in laminae.

This material to be shipped to Harshbarger at Smithsonian Institution.

116

3/21/78
Tuesday

S - $30\frac{1}{8}$ x $24\frac{5}{8}$
76.5cm

2488 LFL

C - $31\frac{1}{2}$ - x $29\frac{1}{8}$

2489 RFL

2490^{RF}

HEAD - 4"

PLASTRON - $22\frac{1}{8}$ "

TAIL - 6"

CLIMATIC

- | Date | Conditions |
|---------------------------|---|
| 2/16/78 ^{thurs} | 25kt west wind, but only part cloudy/sunny. |
| 2/17 ^{FRiday} | Some W wind, but sunny and nice |
| 2/18 ^{Sat.} | " " " " " " " |
| 2/19/78 ^{SUN.} | off Spit Island - Harbor entrance - 19.5-20.0°C |
| 2/20/78 ^{Monday} | Calm during Afternoon. 19.5°C 19.5°C |
| 2/21/78 | Calm most of day - 19.5°C Reef Hotel |
| 2/22 ^{wed.} | strong wind and rain last night - small craft warning in morning, but calm water all afternoon. |
| 2/23 ^{Thurs.} | Nice weather, but moderate wind came in afternoon. |
| 2/24 ^{FRiday} | Rain/wind most of morning. |
| 2/25 ^{SATURday} | Bright sun until - noon - then very strong wind (SW and rain). |
| 2/26 ^{SUN.} | Some overcast in morning - Wind - 70°C change now from West - Some sun in the afternoon. |
| 2/27 ^{MON.} | 4 PM Seawater Temperature at South Point - 19.5°C |
| " " | RAIN in morning hours - cold air - clear last night |
| 2/28 ^{TUES.} | strong wind in morning - STRONG WIND AND squalls all afternoon - COLD |
| 3/1/78 ^{WED.} | intermittent clouds and sun most of day. AIR temp still cold. |
| 3/2/78 ^{Thurs.} | strong south wind overcast. Rain during night - water pool on runway. |
| 3/3/78 ^{FRiday} | S. wind and overcast |
| 3/4/78 ^{Sat.} | |

George H. Balazs
Hawaii Institute of Marine Biology
P.O. Box 1346 KANEOHE HAWAII 96744

TEL (808)
347-6631

