

2-5 DECEMBER 1980 - MOLOKAI
24 AUGUST 1982 - MAUI
27 AUGUST - 1 SEPTEMBER 1982 - MOLOKAI

BALAZS
p. 70 Bullpen drawing

G.H. BALAZS

MOLOKAI #1

LIBRARY OF
GEORGE H. BALAZS

BALAZS

1980

1982

Molokai - 2-5 DECEMBER 1980 Pages 2-32
(Narrative)

Photo Log page 118

Molokai LECTURE (6 AUGUST 1978) SEE OTHER BOOK p 73+

MAUI LEATHERBACK NESTING (24M AUGUST 1982) p 42
(P 35 This book)

Molokai (NARRATIVE) (27 Aug. - 1 SEPT. 82) (6376- p. 56

Molokai TAGGINGS By BILL PULELOA - p. 55
19 MAY 82 - KAPUAOKOOLAU -
OUTSIDE PAHIOMU FISHPOND
(6426 - 6432 : 4 TURTLES)

Bill
Box 175248
KUALAPUU,
Molokai
96757

RESIDENCE -
553-3778
WORK -
567-6696



TAGS SENT TO Bill Puleloa
FOR USE ON MOLOKAI -

COMPOSITION BOOK

9 3/4 IN. x 7 1/2 IN. (24.8 cm x 19 cm)

AVAILABLE AS:

- No. 09-9130 (1130) 60 SHEETS COLLEGE RULED & MARGIN
- No. 09-9132 (1130-P) 60 SHEETS COLLEGE RULED & MARGIN
- No. 09-9134 (1143-X) 100 SHEETS COLLEGE RULED & MARGIN
- No. 09-9132 (1130-P) NUMBERED PAGES

Made in U.S.A.

VERNON McMILLAN, Inc., ELIZABETH, N.J. 07208

G. H. BALAZS

5-12-82 - 6426-6435 (10)
5-19-82 - 6446-6450 (5)
6376-6425 (50)

9-8-82 - 6451-6475 (25)

6526-6550 (25)

6551-6600

10-19-82

10-31-82 6601-6650

7-8-83: 7276-7350 (75)

LIBRARY OF
GEORGE H. BALAZS

TAGS TO PULELOA, (CONTINUED)

2-2-84

6676 - 6700 (25)

6726 - 6750 (25)

7225, 7226 - 7250 (25)

5-22-84

7851 - 7950 (100)

OTHERS SENT
BETWEEN THESE
DATES?

4/26/85

8602 - 8625 (24)

8812 - 8825 (14)

8826 - 8850 (25)

"

63 Total

Page 70 drawing of Bullpent

Shawn

All data entered

NOV 27 2007

into TDPS.



— OBJECTIVES —

OVERALL - Scouting visit to locate aggregations of nesting and foraging turtles using word-of-mouth information that has been supplied over the years.

1. Dengerer - SW coast; Harry Edwards USAF sightings of tracks - July 13, 1977 (300 meters West of wharf)
2. Pekeko - Palaau - Kolo; L. Boulet
3. Halawa hawkbills
4. Aidem - Moomomi
5. Clarence Chow - Kinabouwharf - Wavecrest
6. Hotel Molokai - turtle steaks
7. Kalua Koi - Sheraton - Papohaku Roadstead
8. Turtle Stone
9. Kuunohouu

Review aerial photos of July 1977 and correlate with ground surveys -

2 DECEMBER 1980

TUESDAY

DEPART AIR HAWAII at 9:00 AM with Alan Kam for Molokai.

Fight - variable winds - water off Oahu is exceptionally clear. Reported that ^{NW 8'} surf along with shore.

Land at Molokai Airport - 9:25 AM.

Rental car obtained from Roberts - \$12.95 + \$5 collision insurance per day.

Food gear and drove to Kaunakakai - Ate at Gladys Saimin Shop -

Purchased some groceries at market across the street. Alan knows owners

son.

Drove out on pier and watched crane raise Chinese junk that had been sunk at mooring for ~ one month. ^{BLUE MOON}

Proceeded to "Hawaiian Research" buildings, left turn onto dirt road riding to the East (See xerox South Molokai map pages 6-7). Passed by "pump house" and crop growing verge, entered

Kalaau area, through Iholi (Iholi Pt. where Waikiki released was recaptured by Molokai fisherman). Shortly past here the ocean was visible - lots of Mangrove vegetation along the coastline.

2 DEC 1980 - TUESDAY

Examined coastline at site just past Pahanaka Fishpond. Observed algae washed on shore - also some in low kiawe limbs. Lots of evidence of cattle on beach - hoof marks, ^{COWS EAT ALGAE ? LIKE FISH SC}

Continuing along the coast, we turned on short road to beach at approximate ^{road just before} "Kala" fishpond. Very nice "man" petroglyph on right side of road. Trash barrel present at certain areas (DLNR), although this is Molokai Ranch land. At this site, we saw 2 small dead gray reef sharks and a dead eel. Net mortalities (?) Mangrove thicket to the east. Also noted bee hives set out along the road.

Proceeded to another short "turnoff" road at ruined fishpond immediately before Waiaikane. Dried bones ^{skull} of cow seen at this site. Five cows seen all along the road. Also turned off at Waiaikane (small coconut grove at this site). Continuing toward KOLO, noted small ruined fishpond about one mile before ruined wharf.

A locked cattle gate was present at Kolo wharf on dirt road.

2 DEC 1980

TUESDAY

Recalled that Sgt. Edward's OL-1

fliers saw "tracks" on beach

300 m to the west of Kolo Wharf.

White-brown sand beach starts a short distance to the west of Kolo. Water is deeper, far less turbid/muddy along this coast.

Kiawe vegetation on beach berm - but sufficient area seems present for turtle nesting. No signs of nesting seen.

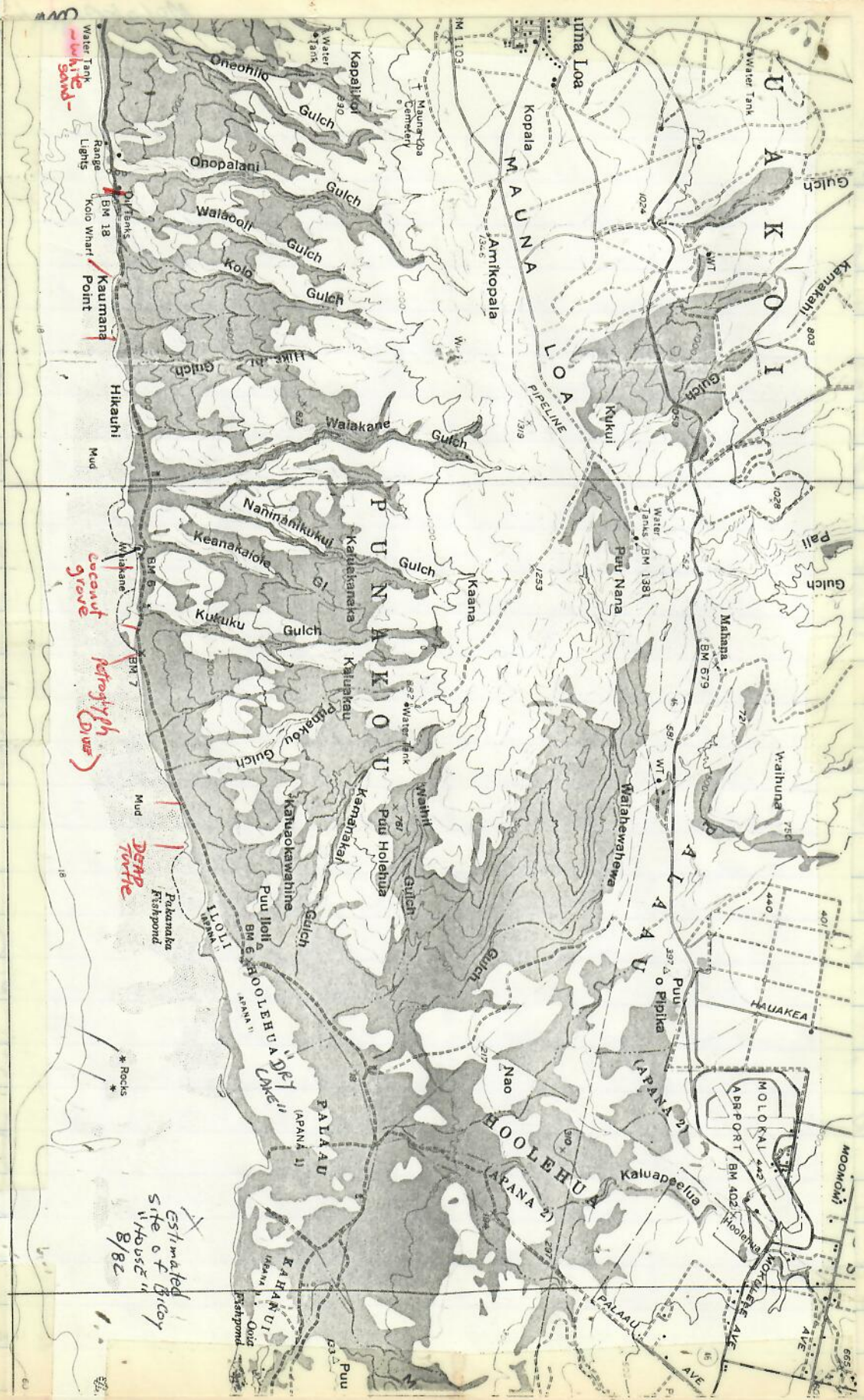
Note that dirt road (from dock gate) of Molokai Ranch continues right along coastline. Noted wood skiff ~ 18-20' on

beach - roller in sand - corrugated metal nailed over top - boat probably hasn't been used for some time. Haleakala ^{cliffs} of HarborNoted ghost crabs - in darker/muddy sand to the east. Oecypode ^(also) noted and captured - purple in color.

At 2:15 PM while walking along sand beach back to Kolo, three military helicopters came along the coast to the West - photos taken. Fast helicopter swung sharply - turned around after seeing me - hovered - sea spray came up - departed.

Drove back to Kala (Petroglyph site) and surveyed offshore area by skin diving. Very soft silty bottom - 6" or more of soft sediment.

Sand
wind blown?



Estimated site of Bicy
11/05/82
8/82

2 DECEMBER 1980
TUESDAY

Algae collection made. Some hard rock-coral rubble present to serve as substrate for algae growth. Noted that *Halophila* grows in moderate low density over much of area from ~2'-6' depth (samples collected). At ~2-300m from shore mud bottoms drop to ~6-7'; continues to be very poor visibility. Inflatable needed to survey. Returned to shore - and to Waialeale for overnight camping. Clear and still night - lots of stars. Cold - warm - cold again very early morning.

MOSQUITOS

3 DECEMBER 1980 First light ~ 6:15 AM
WEDNESDAY Sunrise (at tip of Haleakala) at ~ 6:45 AM. Observed offshore areas - no turtles seen. Tide is low

Departed ~ 8 AM and stopped at each observation site driving to the East. No turtles seen - water very glassy - calm.

Cow "trails" criss-crossing ranch land. Lots of *Acanthopora* on the beach. At first turn-off site of 1/2, we parked and I proceed to walk along the

3 DECEMBER

WEDNESDAY

beach toward Iloilo fishpond. Small boat offshore - same site as one seen

9-1030 AM yesterday. Near junction of Kiawe shoreline and Mangrove fishpond, I found decomposing ^(5-10 days?) plastron lying on muddy bottom in shallow water. "Cleared" carapace found a short distance inland - resting on back. Scouted area looking for more remains, but none found. Round winds in at this junction - trash present indicating visitations for fishing, etc.

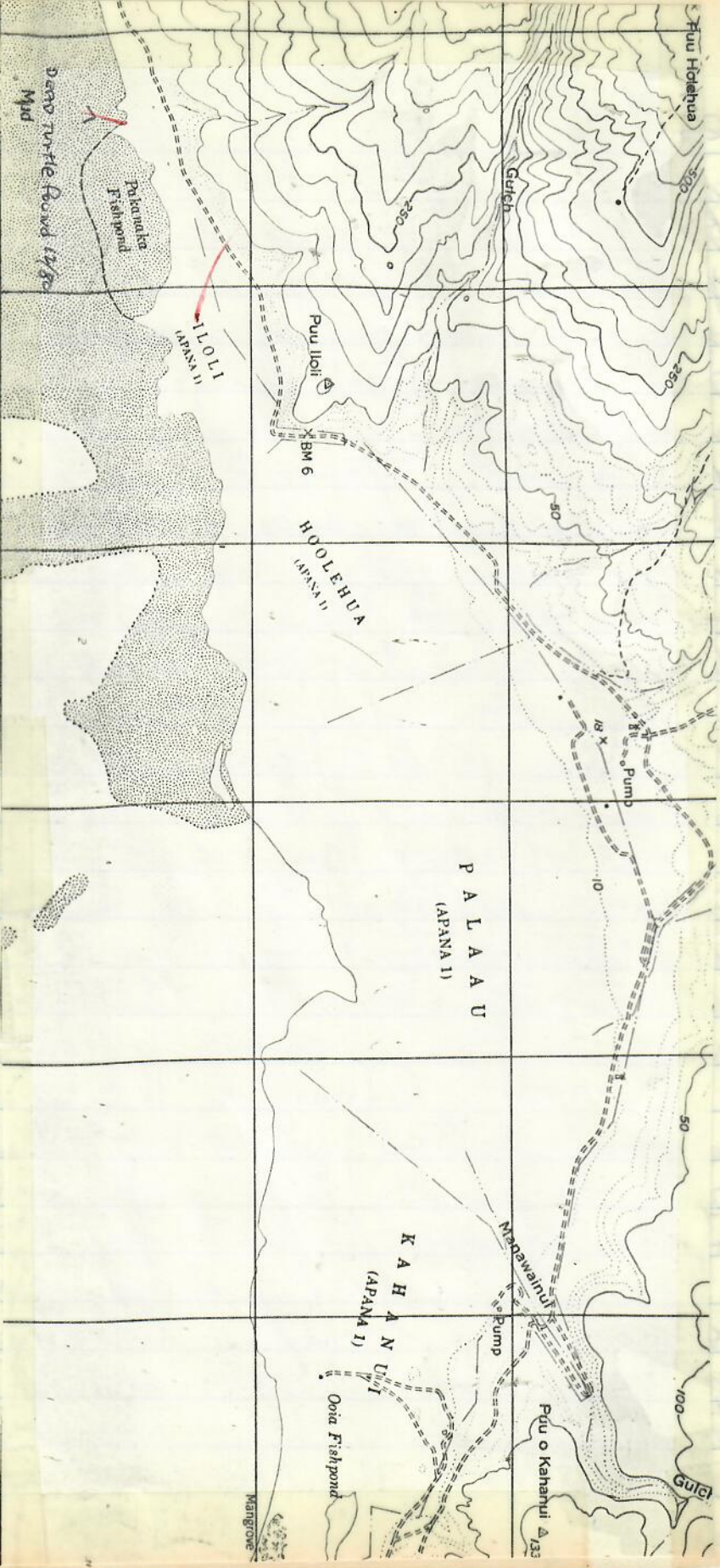
Clams present along beach. Also, mounds of dried algae - Enteromorpha? Boat offshore goes fast in circles at times - appears to be Scuba diver in the water. Catching?

Photos of me with turtle remains.

→ Curved - 61cm x 53cm
Several central plates and plastron bones retained.

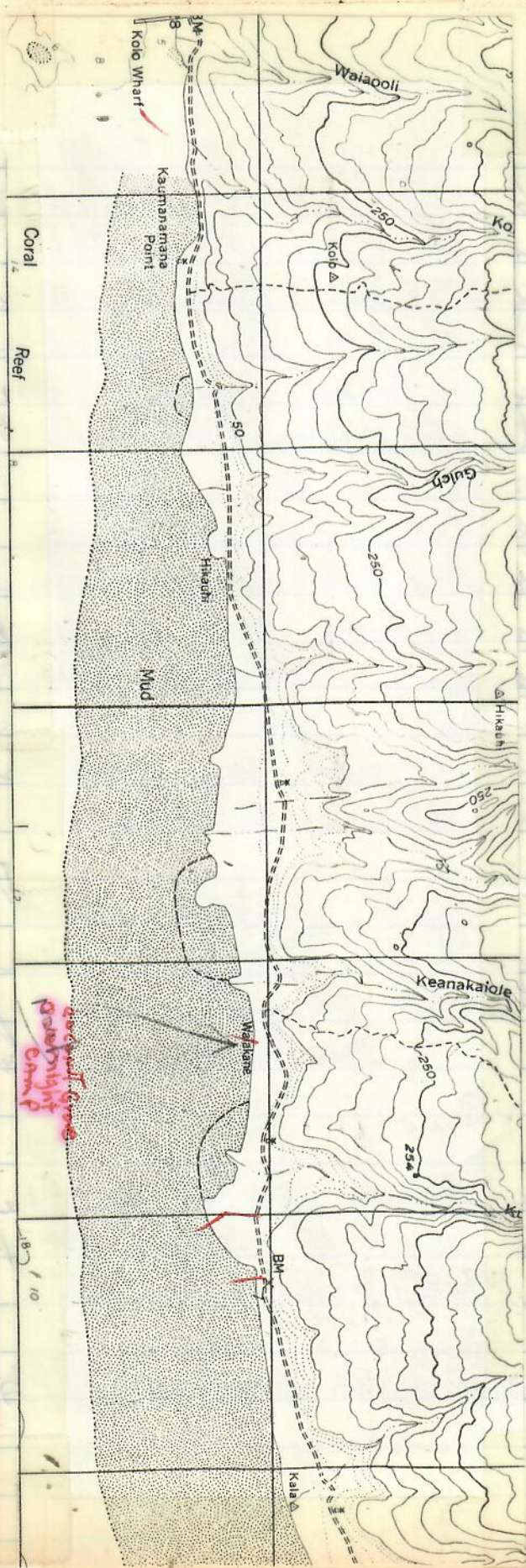
Departed for Paunakakai - drove to wharf - noted fishing shacks on beach - lobster nets noted - small boats moored close to shore.

Had hamburger lunch at Molokai Bakery. Telephoned Lin.



Prepared and published by the Defense Mapping Agency
 Topographic Center, Washington, D. C.

LEGEND
 MAP INFORMATION AS OF 1968



200 feet Green
pole bright
cave

[Faint, illegible handwritten notes in blue ink, likely bleed-through from the reverse side of the page.]

3 DECEMBER 1980

~~WEDNESDAY~~

Visited dive shop; noted large shark fooks (MUSTAD) \$9.00. Small polished green shell on wall. Overheard man mention about problem of traps being stolen. "Times" traps are available to prevent this.

~12:30 PM proceeded along highway to the west. Visited Kāmaloa wharf - noted Acanthophora and Hypnea and some Sargassum washed up on the beach.

No bone piles found, as mentioned 2 years ago by Clarence Chow.

Proceeded to small access road to well-maintained fishpond wall that connects to small island - Kawainui; mentioned by Chow for nesting.

At Wavecrest condos, noted a few small boats anchored - also a place to launch boats from a trailer.

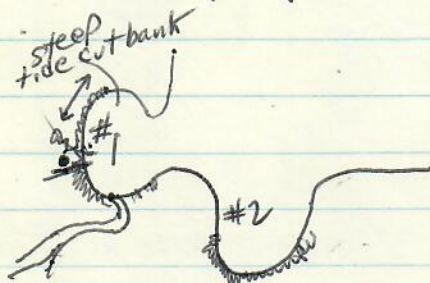
Noted placename on map - KALAIKAULA

3 DECEMBER 1980

WEDNESDAY

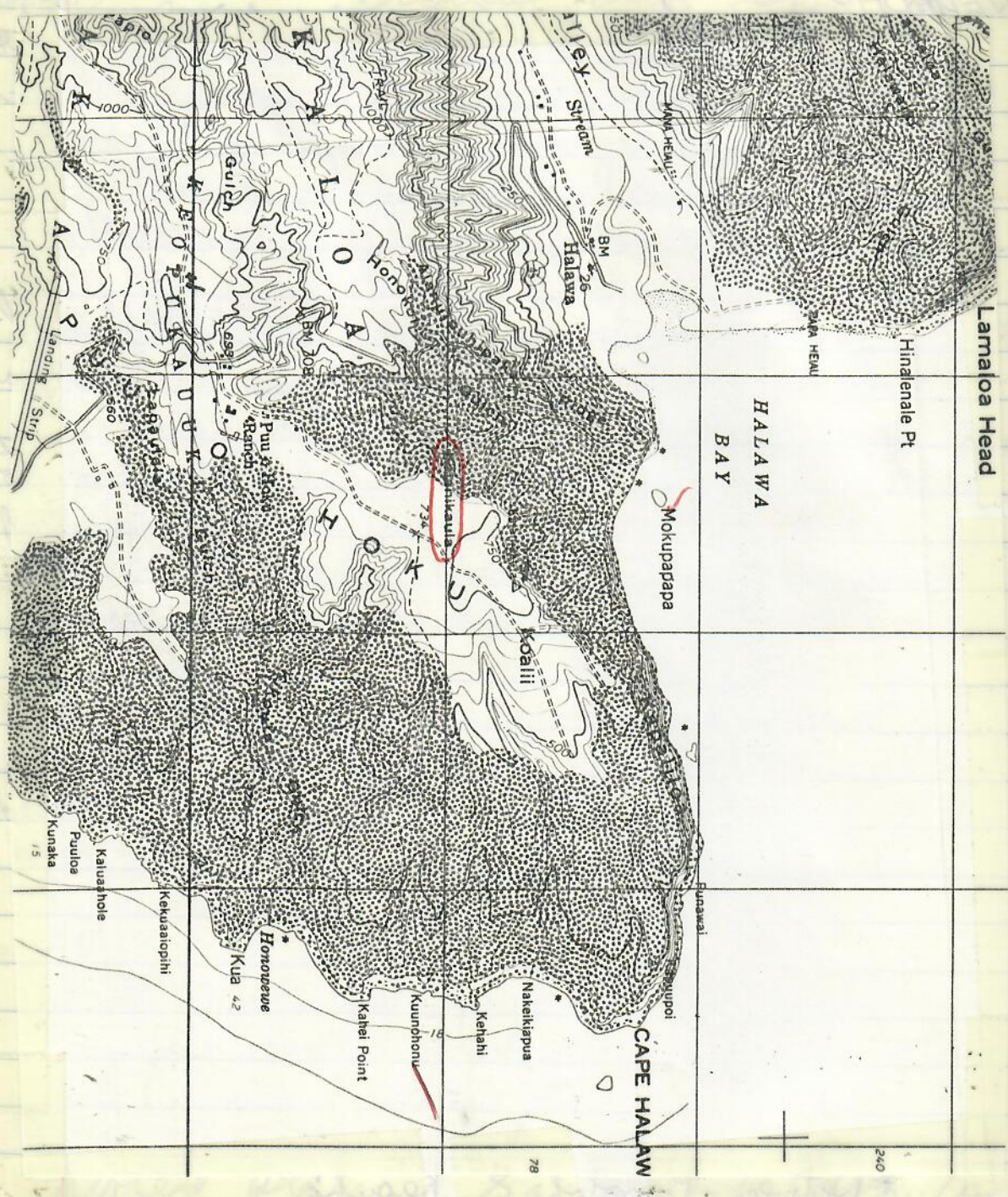
As the road (poor condition) proceeded upland, noted two white sand beach areas - the one with palm tree is Faggin's Beach* (previous owner of Murphy Ranch). Second white sand (strip) is to the East. Dirt jeep trail provides access, but through locked gate (key needed from Molokai Ranch).

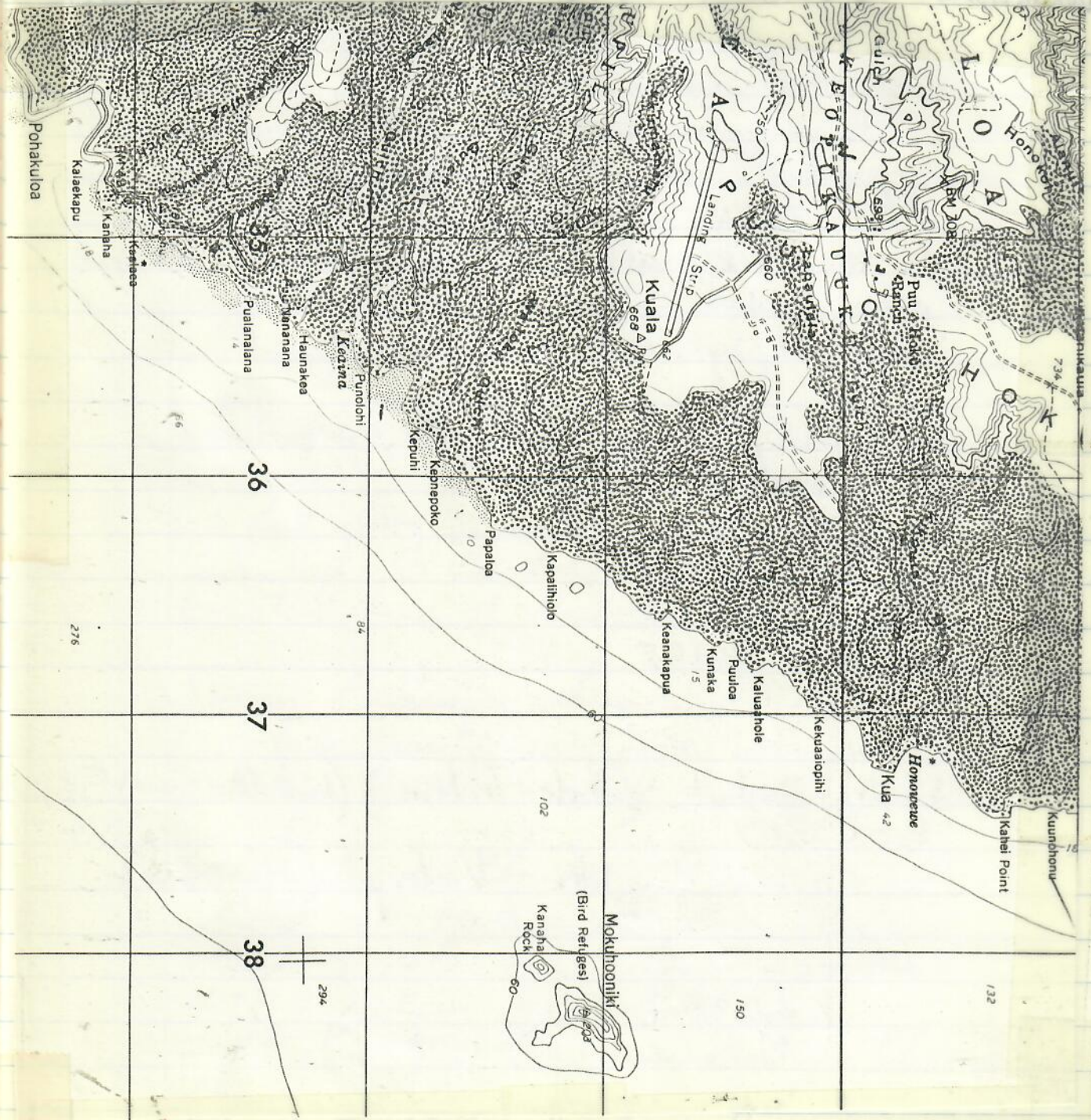
Noted Mokuapapaa as we descended to Halawa Beach. Found motorbike tracks at several places on beach. Found an old xiphoplastron on beach.



See postcard picture - page 28

*Between Punalohi & Kepuhi





3 DECEMBER 80

WEDNESDAY

Noted people on Halawa #1 Beach with dogs - digging in certain area. Later while scouting beach I found site with egg shells (at surface). Informed that their dog dug ^(shells collected) eggs and ate 10-15 last week. They covered remaining eggs - not taken out. Date of egg laying unknown.

Informants, as follows, provided information:

HAL NEWSOME
P.O. Box 296
K'KA 96748

Dupri Dudoit (wife - Leilani) (her mother ^(? name) - ^{Bo} 1977
Box 310 ^{age - 67}
daughter - Victoria (Honey Girl)

Nieces -

LUANA
MIKILANI (McGuire?)

Gathered Opili from rocks -
Caught large one from 14' aluminum boat.

3 DECEMBER 80

WEDNESDAY

Hal reports that tracks of turtles are usually not seen because tide erases them during the night (not necessarily true). He has been coming here since 1968, (lived here for the past 7 years). Turtles nest every year, most on Halawa #2.

Gills reported that hatchlings were found earlier this year - opinion seemed to lean toward hawksbill description.

Hal has seen seal at #1 for 2 years in a row, but not this year. ~ 5 feet long. Also, seals sometimes seen at Hakuhano (north shore) - coastal area of Haloku Falls.

Joan Aidem's husband - head of Molokai welfare. - Joan leads nature hiking trips - also Dorothy Curtis.

Lilani's mother - 67 years old - lived at Halawa all her life. When 15 she saw turtles nesting (4?) - also saw hatchlings. Left turtles alone - never bothered them. Also, someone had a "land turtle" pet at Halawa.

Note - Dark at night, very little light.
However - Consider ~~campers~~.

3 DECEMBER 1980

WEDNESDAY

Difficult to determine, but there appears to be ~7 digs in Halawa #1; possibly same number or more, in #2. 3-4 bushes of Naupaka in corner of #2 - Beach morning glory, backed by Okoa Hale. Also a low grass. Lots of light drift wood - small pieces - scattered over beach. "Hau" - or some other light wood. Sand sample collected #1 nest site.

Note: Hal has come many times at Faggin's Beach - doubts if nesting is taking place.

4 DECEMBER 1980

Thursday

Up ~ 7 AM. During the night a mongoose, or rat-mongoose, crawled onto my sleeping bag. Heard Gulls at night - Also, S. Noted that eaten coconut by Halawa Park pavilion. "SCET Project" (boil water requirement - or add a drop of clorox).

Halawa Beach #2 has barbed wire fence across grassy field. However, car access is possible though.

4 DECEMBER 80
 Thursday gate that says "Private Property" Car tracks
 inside; camping trash at several sites.

Halawa #1 backed by river.

Noted "line" strung over river - electricity?
 or?

Plovers regularly seen on beach and in
 grass areas.

During morning hours, 50 ghost crab holes,
 (possibly 2 species - 1 large, 1 small) at low
 tide.

Possible title: "Hawksbill Turtles Nesting at
 Halawa Beach, Molokai"

Saw turtle egg-eating dog roaming free during the
 morning. Found thin shell of egg in
 sand.

Departed Halawa ~ 10 AM.

Photos of beach at high elevation.

Noted cattle egrets in pastures.

While driving back to Kawalo-Kaunakakai,
 noted locked gate (Molokai Ranch) to
 Faggins Beach. Also, small strip
 of white sand right after house on
 moon-shaped bay. Gray sand

4 DECEMBER
Thursday beach at the mouth of
Waialua River.

12 noon Arrived a Kawalo Wharf - noted
twine net - 4" mesh, piled up on
small raft - Filipinos in Red
Chevy Truck 539-926. Net stated
used for Awa (or mullet to).

Surveyed reef and deeper "green" areas to
the west. Calm water, but still turbid
poor visibility. Lots of live coral along
sides of deeper areas.

Three kinds of unknown algae collected
others observed include:

Turbinaria

Caulerpa racemosa & *serpulata*

Acanthopora (large masses rolled up)

* Need: Place telephone calls to outer-island
people on record as making turtle
tag recoveries.

* Fishing observation survey at boat landings (B. Lee MOP
passed by fishpond with stone wall
(down short dirt road) that leads out
to attached island
by Clarence Chow as possibly having nesting ment.

4 December 1980

Thursday

Returned to Kaunakakai - on the way in, noted land development - road construction above fenced land of National Wildlife Refuge (marsh reeds?).

Ate lunch at Hop Inn. Walked through Dive & Fish shop.

Tried to telephone Joan Aidem - no answer.

Telephoned DOCare 567-6618 about road to Moomoomi - Also, Hawaiian

Homes Commission 567-6104. Report that gate is not locked - because lock kept getting shot off.

Proceeded to airport, through Hawaiian Homestead house lots (many nets noted at some houses). However, apparently very little fresh fish ever sold in Kaunakakai.

Out Moomoomi, dirt road ^{fenced} to Pavilion that sets right on red cliffs of Moomoomi Bay - Hawaiian people camping here - divers caught lobsters offshore - large surf rolling in. I walked out rocky cliff point to the right (calcareous rock substrate). Noted 2-3 small plants of Euphorbia.

Departed to locked Molokai Ranch gate to the west. Parked car and hiked along road - to coastline and sand dunes. Euphorbia found growing

4 December 1980

Thursday every so often in dunes. Also found 50 Cal slugs, and larger shell cases. Areas used for military practice in the past? Contingent to Poomooni half-moon bay with pavilion (DeMonte?). Euphorbia interspersed with other vegetation on each side of the dirt road. Walked around beach - lots of broken pieces of plastic containers. Steep sand bank where waves (large) have been washing in. Walked to western end and examined jagged limestone overhangs and cliffs where sand has blown into. Found smooth, heavy piece of driftwood. Noted mixtures of opihī, sand and other shells. Joan Aiden reports finding an Adze at this site - freshly uncovered by waves. Returned to airport to telephone Kalua Koi - Sheraton Molokai Hotel. Drove to this hotel for \$25 room. ~ 12-13 miles (5 miles from turnoff, coming toward Maunaloa town)
 Canned dinner in room

5 DEC
FRIDAY

5 December 1980

FRIDAY

Breakfast at hotel restaurant ~ 7:15 AM. Waitress indicated that USCG buildings at point are abandoned - haven't been used since the 1950's. Beach cove in front of hotel has extensive exposed rock before sand. Possibly this is only exposed during the

5 DECEMBER 1980

FRIDAY

winter with large surf. - Sand returns during the summer? Like certain Na Pali Coast beaches

In gift shop, I saw tanned axis deer skin on sale for \$125 - sent to the mainland for tanning - but from Molokai. Also, polished Upey (chains made from deer horn). Golf course present on both sides of hotel - Road to the south lead to Papohaka Beach - shuttle takes tourists there several times a day - ~ 2 miles. Fences and locked gate of Molokai Ranch land border this area. Fence perpendicular to shoreline is present a ways onto sand beach.

Need - short letter to manager of hotel concerning nesting, or other turtle observations.

Reported that African animals (Safari tour) are located on hillsides just above hotel.

Drove to Kalapaua look-out in State Palaua Park - Mule tour facilities close by. Walked away down trail - mud and mule dung mixture.

Drove on to Phallic stone(s) at end of paved road (still within Park). Many ironwood trees in area - Gnats and defacing present on stone. Proceeded back to Kaurakapi

5 DECEMBER 1980

FRIDAY

to wharf where I telephoned Joan Aiden. She indicated that she hadn't been out to "Moomomi into cliff" site was some distance past where we walked (on to Kalani area). Against dune of sand beach Moomomi she said rare remains of turtle industry - many burned turtle bones (why burned?). Doesn't think bones of turtles (prehistoric) were found with bird bones; however I should check with Zeigler.

Visited Kaunakakai waterfront shacks used for fishing - small boats moored in front. All of this must certainly be illegal. If you tear down Sand Island, and Kahi Lagoon (Oahu) squatter shacks, why not also tear down these?

Most usage may be by Filipinos.

Noted algae washed in along beach in front of shacks - *Gracilaria* (woman gathered), *Codium edule*, etc. Lots of twine nets in shacks - 2-4" mesh. storage raft at anchor that I can't see contents. Alan found a portion of plaster bone in the sand - partly decomposed.

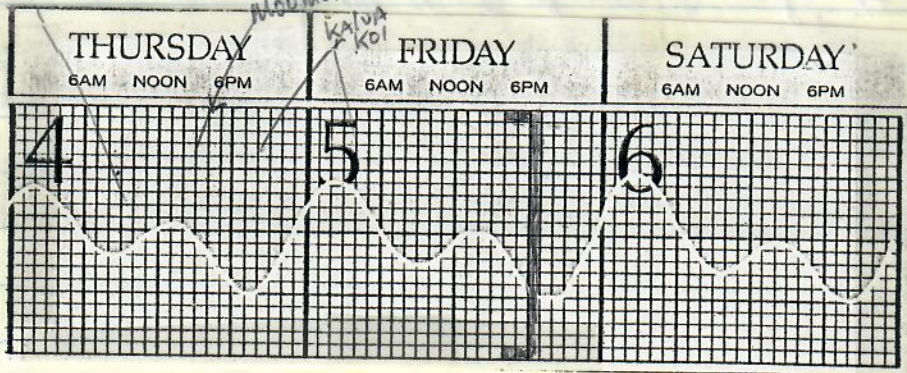
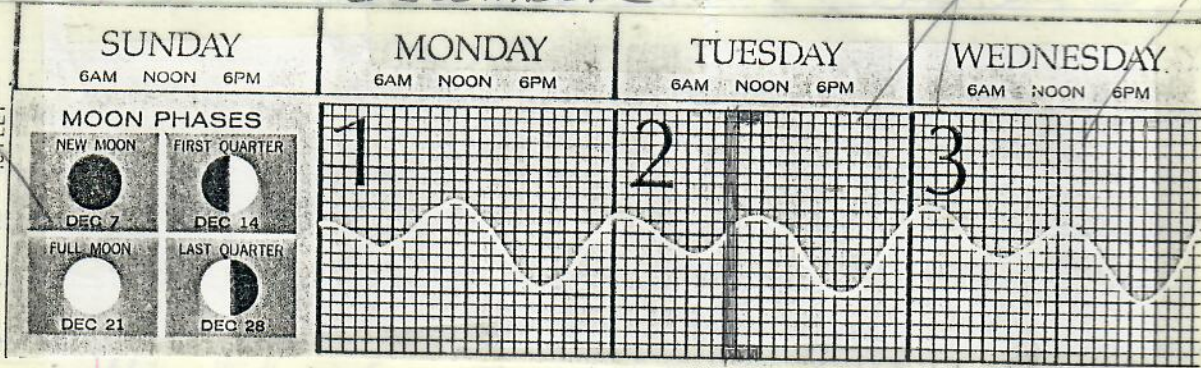
An inspection of wire remote trap dump areas in the vicinity did not

MOLOKAI, 27

Palaau District
Koloahart

Halawa

DECEMBER



For tide time at following places, add or subtract from Honolulu time.

PORTS	Hrs.	Mins.	PORTS	Hrs.	Mins.
HANAIEI BAY, KAUAI	-1	40	KAUNAKAKAI, MOLOKAI	-0	09
NAWILIWILI BAY, KAUAI	-0	32	KAHULUI, MAUI	-1	48
PORT ALLEN, KAUAI	-0	32	KIHEI, MAALAEA BAY, MAUI	-0	14
HALEIWA, OAHU	-1	36	HILO, HAWAII	-0	59
HANAUMA BAY, OAHU	-0	55	HONUAPO, HAWAII	-0	24
KANEOHE BAY, OAHU	-1	35	MAHUKONA, HAWAII	-0	24
LAIE, OAHU	-1	48	KÉALAKEKUA BAY, HAWAII	-0	16
WAIANAÉ, OAHU	+0	16			
WAIMANALO, OAHU	-1	15			

5 DECEMBER 1980

FRIDAY

produce remains. However, dried partly deteriorated carcass was found in old boat by dirt access road, the area was full of rubbish. Passerby indicated that shell had been on ground by road for some time before it was thrown into "rubbish" boat.

Measurement of shell - Curved - 60.5 cm x 54 cm
 Hawaiian still sighted in marsh area near shack - circled several times ^{calling}, then flew away.



Halawa Bay, Island of Molokai, Hawaii

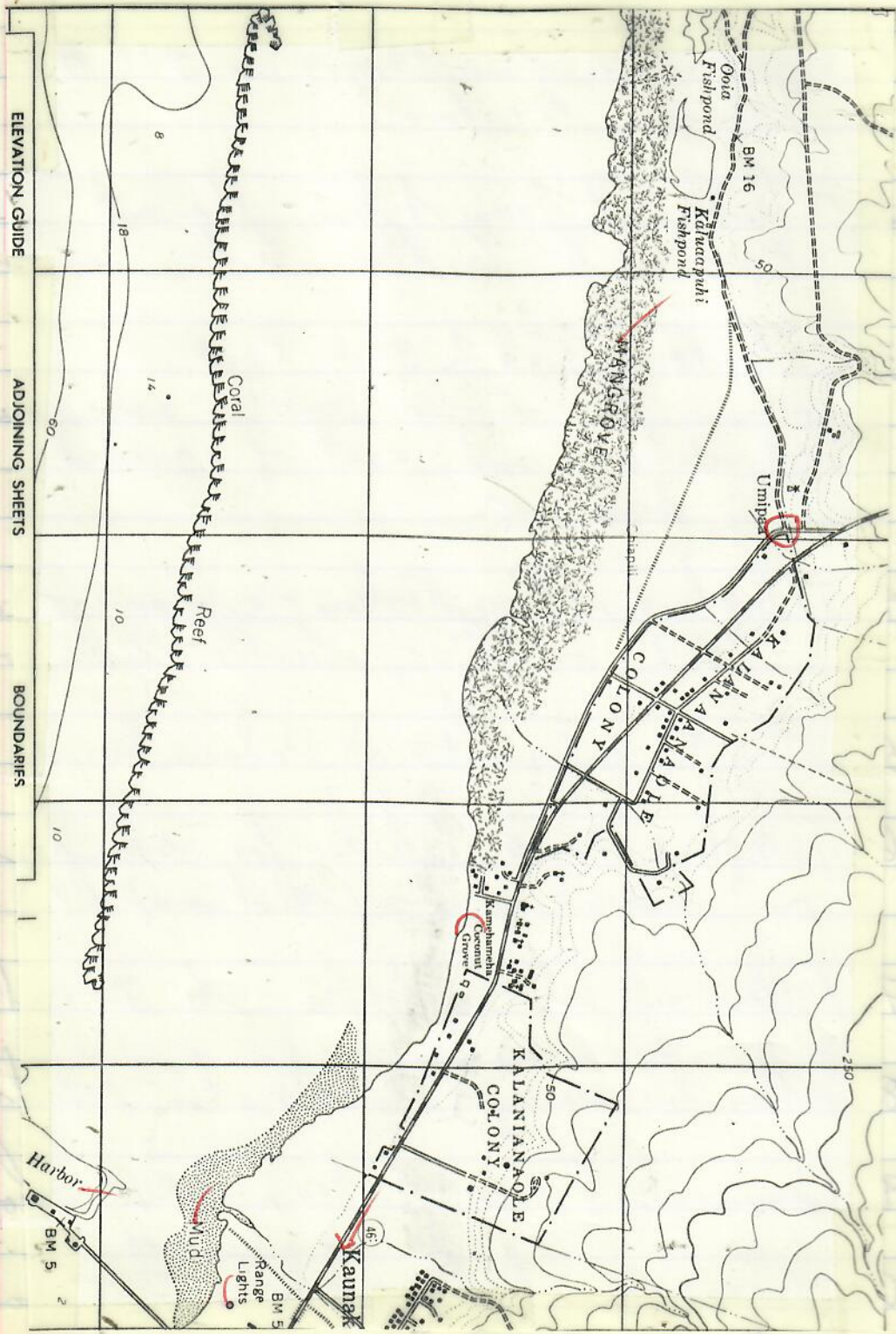
5 DECEMBER 1980

FRIDAY Southwesterly weather front started to move in - Proceeded to Hotel Molokai to write notes during heavy rain.

At 3 PM we drove to Airport. Rain had lessened considerably. Aloha jet canceled due to wet runway.

Waited for reserved seats on 6:15 PM AIR HAWAII Cessna 404. Arrived in Honolulu about 7 PM.

Note - Air Molokai flights - use of DC-3.



- 2-5 DECEMBER 1980 FOLLOW-UP ACTIVITIES

1. Clarification from Derges on 1928 Kolo report.
Behavior; Location
- * 2. Calendar to Joan Aiglem - Request
tips on turtle take. Send map
3. Telephone Fish & Dive Corp. -
Inquiry to Linlee Boulet concerning
^{recent} observation, and cost of guided
tour. Send map.
4. Telephone Le Roy Molina - Inquire about
1969 nesting; turtle-take violation
- X 5. Letter to informants at Halawa Beach
6. Telephone Noah Pehelo for clarification
on several points (send map?)
7. Follow-up on Euphorbia to Derral Herbs
8. Letter to managers of Sheraton - report sighting
9. Commercial use of deer skin & horn
10. Telephone turtle catchers^{know to me} that made
log recoveries -

MOLOKAI LECTURE - 5 AUGUST 1978

Departed for Molokai on Royal Hawaiian at 11:30 AM. - arrive - 11:40. took one photo of rocky islet at SE side of Molokai; flew down North Shore and noted bays; campers off powerboat were in one; second large one had large catamaran anchored offshore.

Rented car at airport and drove to Hotel Molokai - checked in and then departed to Halawa Beach.

noted mangroves abundant in places along the coastline. Stopped at Palakupiki and noted turtles ~ 50 yards from shore - channel exists offshore. Several of the large fishponds look in good condition. George Murphy ranch

5 AUG 78

SATURDAY

named PUU-O-HOKU. Rainfall obviously greater at this end of island. Report of lots of freshwater filtering into ocean along Molokai's South shore. At Halawa river-beach-valley (several photos); river beds into beach sandbar present - lots of driftwood litter on beach - sand sample taken. Several boats moored. Campers present.

Returned to hotel; called Lin; rapped for one hour; ate at Dairy Queen -

talk at Molokai School - about 25 people present - some tourists -

Presently include - George Peabody's wife (?)

- Clarence and Hilary Chole

- Joan Aidem

- Dr. Newman, M.D.

- Mr. & Mrs. Trapp - controller at Airport
ONLY 2 months on ISLAND

- Anthropology authority - name?

afterwards, went to Chow's for Hilihoi juice and cake.

Information summarized as follows:

1. Faggin Beach, small white sand located on ^(below ranch) land managed by Molokai Ranch reported that sturges nest
2. Nesting possibly also at Kawainui - an island connecting into a fishpond

Miss contact -
Kwelen Faggin

5 Aug 78
SAT.

12-MILE MARK

just past Smith-Bronte landing site.

3. Just past Kamaburufu - Waggcrest - report that many turtle skeletons were on the beach - in offshore water - 35' deep turtles were "gaffed" while sleeping next to boulders. Turtles always full of hifos - like limu - the kind O Nenee feed on.

4. Technique of catching turtles as per Clarence, who went with top molo kai killer some years ago, consisted of anchoring skiff some distance from sleeping turtle, one man (or two hold rope at proper distance) and man with "gaff" swims up over rock and hooks turtle.

5. Doesn't like to ^{sell} fish - only trade use for family
From Joan Aidem -

? [Bird and turtle bones were found deep in an eroded sand dune at Moomomi - evidence of a fire was present. Also, recently dead whole turtle was found at base of cliff. Crawled there in an attempt to nest (?) - More info needed from her on this subject.

but further to the west

6 August
SUNDAY

Breakfast at hotel - to airport - telephoned Joan at 553-5641 - She reports that

6 AUG 78
SUNDAY

Presumed. // more recently dead turtle bones
found at base of dunes at Kahani Point
(near Moongoni). She said that few
people go there to dive - therefore I thought
turtle got there trying to nest.

Questions: Do Fish and Game personnel ever attend
lectures?

11:45 AM

Depart Molokai - Royal Hawaiian Cessna (210?)

Should contact Leroy Molins concerning
1969 Halawa beach hawksbill nesting,
and possibly more recent ones that
have been suggested as occurring.

Send booklet - publication Bio. Cons. →

Agreed to take me
diving at turtle location.

WHOLESALE _____ RETAIL _____ RENTALS

C & H SALES and RENTALS

P.O. Box 726 KAUNAKAKAI, HI 96748
TELEPHONE 553-5585

CLARENCE G. CHOW - wife HILARY G. CHOW
PRESIDENT VICE-PRESIDENT

(8 kids total) - two in ^{pre-}dentistry, one ^{pre-}vet; building
a new house; raised Kahalohe - Clarence once caught
- 500 lbs turtle off of Kahalohe - tied it up.

24 AUGUST 1982

TUESDAY

Telephone ^{TO NMFS} call from a Russ Dorais
station manager of KMVE on Maui
tel 871-9744 on WATS line

Reports that he saw a turtle crawling
back in the water this morning
while he was walking on the beach
between Maalaea and Kihei.
Ridges on back - must have weighed
500-600 lbs. It had crawled up
and dug in the sand at a point
along the beach where cliff (?)
bedrock (?) prevented it from
going into the vegetation.

Bill Gilman suggested that
I fly over and assess the
situation.

Departed on Mid-Pacific flight 78 at 11am
but delayed ^{departure} until about 11:45 -
Arrived ~ 12:15pm, but it
took until 12:45pm to get my
2 white buckets off the plane.

I telephoned Russ and he
picked me up at the airport.

He lives in a Condo right on the
beach at Maalaea. He then
drove me to Maalaea area - swampy
region behind ^{white} sand row has

lots of sitting water. Russ says there is a considerable amount this year compared to last. We wound our way through the dirt roads where Kgm and I had gone during 1980 visit. Puddles blocked our way several times, but we finally found a way to the dirt road that runs parallel to the beach immediately behind beach dune and vegetation. We entered through the same parking area that Kgm & I used. I proceeded to walk along beach - tide was high this morning - down somewhat now. Noted limestone formation bordering close to shore where algae grows on it. Only extends a short ways off shore and is covered enough by the high tide. Note that Maafaea Bay itself is shallow for a considerable distance out; and that Kahoolawe is across the channel.

We walked down the beach about $\frac{3}{8}$ mile, a short ^{100-150 feet} distance before stream/bunch of trees, where Russ turns around on walk. Reportedly a 2 mile walk from

24 AUGUST 82

TUESDAY

his, Cordo (RT?). The upper bank here is saked-together mud-silt. Dune said nearby - all of which blows loose due to strong winds that always blow offshore across this isthmus. Some of the tracks were still visible, but were rapidly vanishing from off wind.

I took a few photos, some with Russ. Tracks at widest point visible were 60" (5 feet) Russ' arm span was 75".

Dig/Nesting disturbance area was adjacent to, or against "flume" - well above high-water mark.

The larger (1st) sand dug area had some sand built up - I dug several nest holes and collected a sand sample. Sand contains small pieces of mud clot here. I also excavated mound of sand area - loose sand for some distance underneath, but no sign of eggs. Second (presumably) and smaller dig site was mostly right on mud-saked silt - only a shallow scratching - hard mud underneath.

24 A
TUESDAY

24 AUGUST 82

TUESDAY

Maui Sunrise ~ 6:30am -
Twilight start at 5:45am

When Russ^{7am} first walked by the turtle, it was partially down the beach, or parallel to the water. On his return walking down the beach, he saw it crawl into the water. Only small waves are now breaking on the shore. When she crawled, he heard grunting. Turtle was "clean" - no injuries of any sort. Slick &

AN OBIE COMMUNICATION STATION



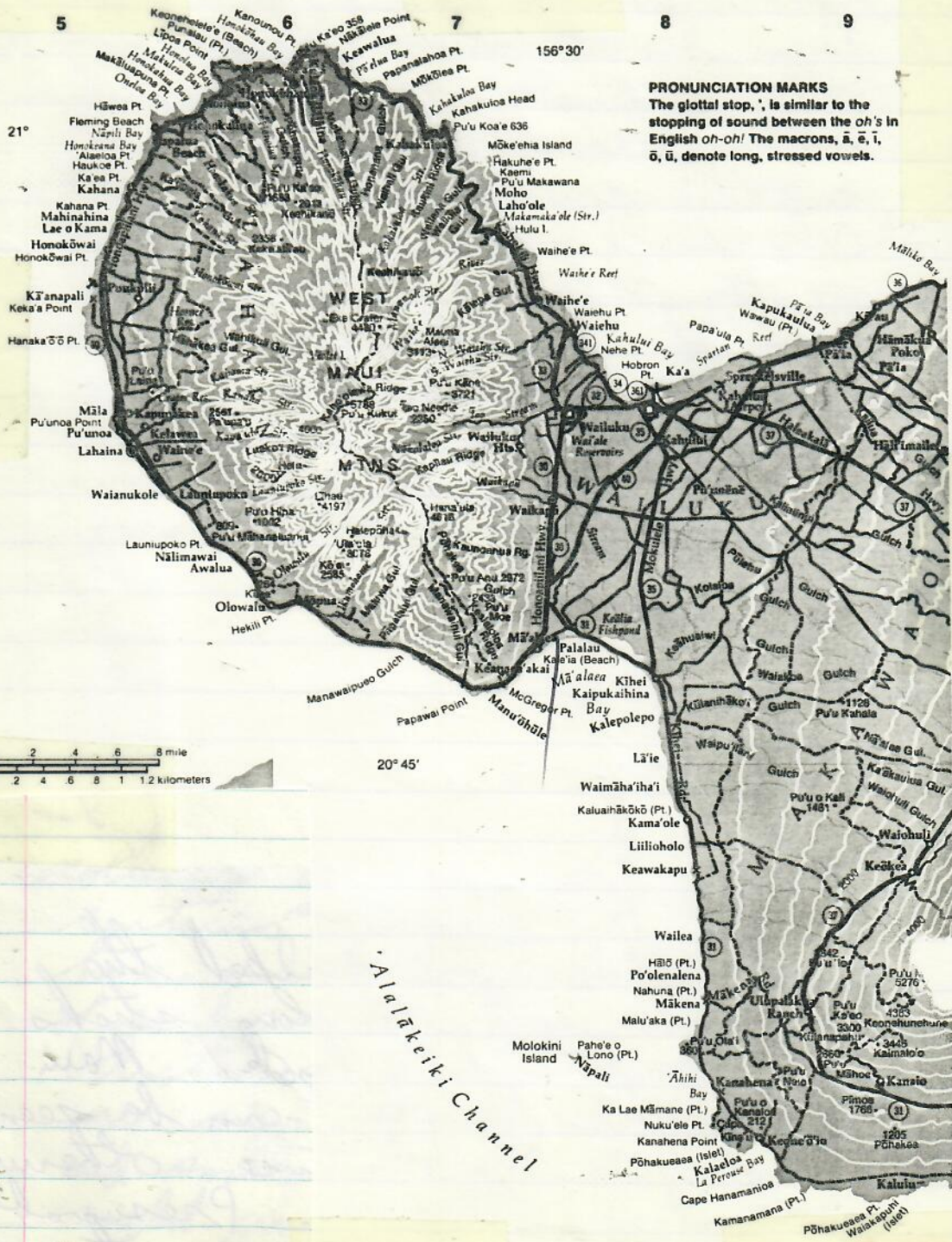
... FOR GOOD SOUND REASONS

WATS-537-5847

380 Dairy Road
Kahului, HI 96732RUSS DORAN
General Manager
871-9744

smooth skin. I marked the nest site with two long sticks on the upper portion of the bank. Maui electric generating plant can be seen, and heard, in the distance. Otherwise, vacant in the area. Presumably no lights at night, except cars on distant highway, probably not

MAP OF MAALAEA



24 AUGUST 82

TUESDAY

directly visible by resting turtle, or hatchlings. Kealia Pond is further down the bay toward Kehe. Far end of sand-beach bay is also bordered by condos or hotels - reportedly ~ 5 miles.

Noted grubby-looking campsite, made sunbathers; beach area is heavily used by exercisers. Also, Russ stated that "local" dive & fish along this beach.

Dig site was just about as far from high-tide line as you can get and still be in sand, and not silt.

After examining the nesting areas as carefully as possible, Russ and I returned to his car and went to a Mexican restaurant for lunch. He walks beach most every morning and will continue to look for tracks/nesting.

After lunch, Russ took me back to the airport. I telephoned Ed Bartholomew at Sea Grant Advisory. He mentioned hearing Peter Connolly tell about

24 AUG 82 seeing hatchlings on Lanai.
 Tuesday Need to mail Ed Bar a packet of
 turtle material. Address:

Departed Maui on stand-by Hawaiian
 Air jet at ~ 5pm.

26 AUG Telephoned Russ - he did not see any
 signs of nesting in the area he covered
 on 8/25 Wed; He did not walk beach
 this morning. Other people that work
 at KANVI that walk this beach
 will also be on the look-out,
 - Idea - Have Russ, or Ed Bartholome
 contact helicopter company to look out
 for leatherback(s) in the water.

9/2/82 Telephoned Russ - nothing new seen.
 Thursday

TRANSCRIBED FROM LETTER 55
SENT TO ME BY BILL POLELOA-DOAR

Turtles tagged on the morning of
19 MAY 1982 from Ed Medeiros' net
at Kapuaokoolau, Molokai, just outside
Pahiomu fishpond. (obviously only to nearest inch)

6426, ^{entry} ~~no. 102~~ CCL-18" (45.7 cm)
6427

6428, CCL-19" (43.3 cm)
6429

6430, ^{entry} ~~no. 102~~ CCL-30" (76.2 cm) "possibly female"
6432
6435

6433, CCL-22" (55.9 cm)
6434

Tag 6431 bent (applied later)

27 AUGUST 1982 - FRIDAY

27 AUG
FRIDAY

Depart at 2:25 pm on Hawaiian Air Dash-7 aircraft - 4 engine propellers, bound for Molokai.
Arrived at about 2:50 pm. Rented a car (\$19.95) Molokai-Rent-a-car. Drove to Pan Hana Inn - no vacancy tonight, probably due to Melvin Leed show. Checked in to Hotel Molokai \$20 night. Reviewed previous notes on Molokai.

cat
seen

2:55 pm I departed for Waikane - south shore "mud" flats along "Beach Access" road into Molokai Ranch land, turned left on road just before "Hawaiian Research" buildings.
"Nearly everywhere I go to study Hawaiian sea turtles I find evidence of (poached turtles) turtles (being killed); indicating the poachers are one step ahead of me.
New since Dec 1980 visit it a large plant with smoke stack (electrical generating?) with large land area surrounded by cyclone fence with barbed wire on top.
Just before plant, there is a fishpond on the left that says "Keep Out Mai Parit"

watched for
turtles - low
tide - none
seen

Mamy

27 AUG 82
FRIDAY

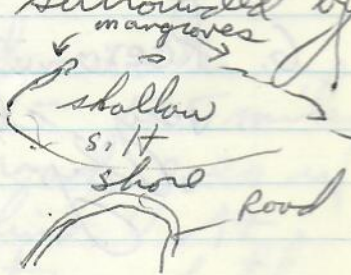
Lots of cattle on the road. Noted
"dry lake" on the left.
They seem to have been (or are going)
the bulldozing and removal of Heavies.
Saw lots of cattle egrets offshore - +
few on land. Lots of Game birds.

cat
seen

Arrived at Waikane about 6pm.
This is the coconut grove site. Low
tide present. Scutes of ^{large - sub-adult} green turtle
found in trail where I parked my
car. One saved. Watched for
turtles over silt-water mud
flat reef - none seen. Trash
containers present. Departed at
~ 6:45pm return.

watched for
turtles - low
tide - none
seen

Stopped at
next "beach" site - trash containers
across from stick-man ^{0.2 mile} petroglyph.
This site is 0.6 mile from Waikane -
Next stopoff - further down road
to the right - beach is surrounded by
the remains of a fish pond



Many Buffos on the road in places.
It was dark when I
reached the paved highway
8.5 miles total; 17 miles (RT).

see
map p. 6

BASIC REASONS FOR, ^{OR} OBJECTIVES OF, THIS TRIP:

Home Phone: 553-3778

P.O. Box 175

Kualapuu

9675

1. Work with Bill Puleoa & Ed Neale (paid \$100) to view Ed's net fishing operation which accidentally catches turtles.

P.O. Box 1216

Kaunakakai

96748

2. Go with Bill to sites where he saw turtles when he was young. Make comparisons.

3. Examine Halawa Beach for hawksbill nesting.

4. Hike to Moomooni again (?)

5. Telephone ^{Kalaupapa} Kalaupapa - Paul Harada?
Tel. 967-6446

6. Reexamine Waiokane site for turtles very close to shore, as reported by Noah Pekelo in 1974.

DOCS

1151 Punchbowl St.

Honolulu 96813

27 AUG 82 Returned to Hotel Molokai; had
FRIDAY dinner and called Fin.

Need - Xerox blow-up map of Kalapapa and use
for sighting form to send to Paul Harada.
Note to Park Service about Kalapapa
& ^{recent} Kalape hawksbill nesting.

Dinner at Hotel Molokai ~\$9

28 AUGUST 82 Wrote up data til noon -
Saturday also wrote a "Review letter" draft SE
recovery plan for Sally Hopkins.

Moved to Paul Hana Inn - \$15
instead of \$20. Ate lunch at Inn
restaurant - \$4.50

Departed for Halawa at ~1:30pm

Wavecrest condo complex is just
before mile marker "13" - Hawaiian
name here is -

"mud" flat reef and dirty water
decreases noticeably at ~17.5 miles.

At ~23 miles the road goes up,
departs from low coastline. At

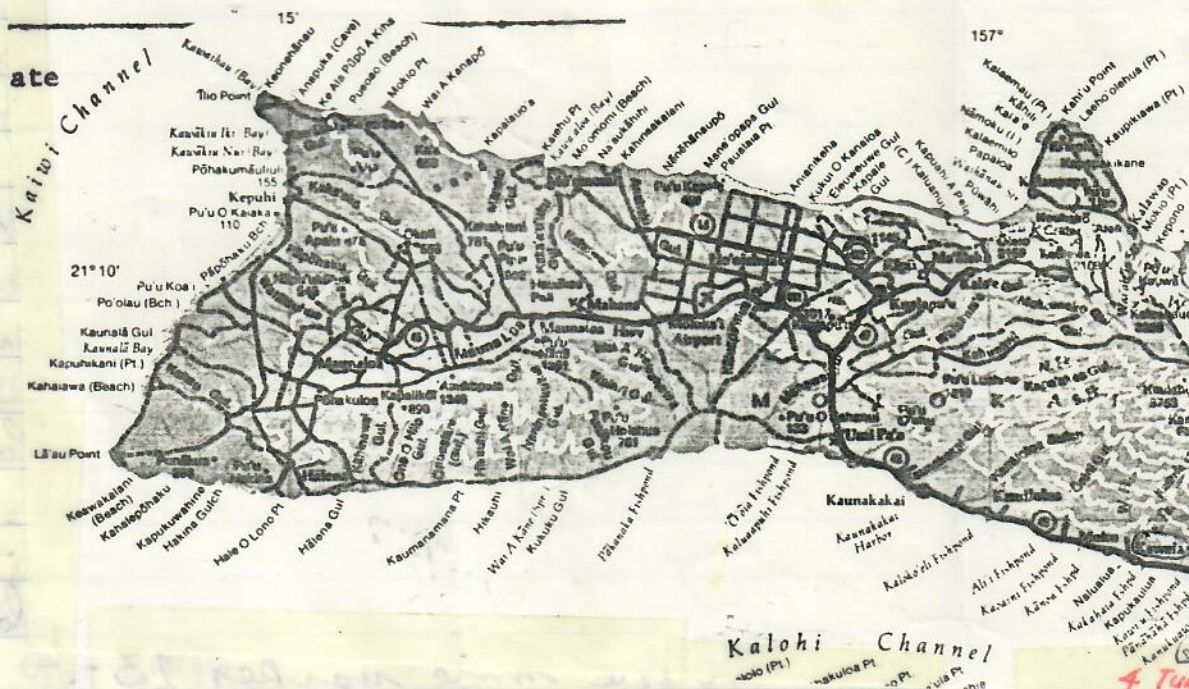
21 miles the condition of the
road deteriorates substantially -
appears to be little maintenance.

Just before road goes up, there is
a bay with small sand (yellow)

60-61 Molokai-map USED ON SIGHTING
REPORTS GATHERED BY
BILL PULELOA

see fishpond
references. need scale -

please return to: George H. Balazs
Smithsonian Institution of Marine Biology
P.O. Box 1346; Kaneohe, HI 96744
Phone: 247-6631, 946-2181



28 AUG 82

SAT.

beach. Adjacent house & 2 boats usually moored in bay. From this point, it is 6.5 more miles to Halawa Beach, or a total of 29.5 miles from Pan Hava Ima, Kawakahi. At about 25.5 miles you can look down and see Faggin's beach. From this point, you can see the ocean again until you start to descend into Halawa. When crossing through this inland area, you pass through "Pu-o-Hoku" ranch. Noted passion fruit along the road, so stopped and gathered some.

Arrived Halawa ~ 3:15pm. Noted that dirt road leading to bridge across river has "no trespassing private property" sign. Proceeded to Beach #2 pasture with partial fence. Surfers here in moderate breaking waves. Water very brownish ^{from river}. Hiked along #2 beach - no signs of nesting. Noted that wind must erase any tracks very quickly, since small black gray drifts of sand were seen on beach morning glory leaves.

28 AUG
SAT.

28 AUG 82

SAT.

At the end of #2 beach I continued along boulder coastline, and then climbed up to see around the point. I took several tries to find a safe way up. From the top, I took photos of Mokuapapa and Halawa. This is a good vantage point for seeing turtles, but none observed.

Returned to car, took off boots, and waded across pipes to Beach #1. 2 likely nesting sites found on supper grassy bank; 3 photos taken. "Lower" beach has lots of ^{small} driftwood and other debris. Two pit bulls came onto beach from tent - "living site" at east end. Dog ran all over the beach - this prevented me from digging around at either of the nests. Returned to the car and depart ~ 4:45 pm. For about 4 miles, starting at the sand bay where road meets the coast, there are several small beach areas where hawksbill could conceivably come ashore.

Noted KUPUKE fishpond - seems to be the most easterly pond,

28 Aug 82 :

and is in good shape.

Pukoo Harbor is at the 16 mile mark. Noted Mana'e canoe club shed. dredged area bordered by white sand. Stopped at WaveCrest (OLA Pie) store, and walked to unimproved boat launching area. Large drifts of Acanthopora and some Hypera on the beach.

"Smith - Blounte landing" is at the 12 mile mark. Kanaloa landing turnoff is near 10 mile marker (KK Kai side of St. Joseph's Catholic Church).

Pahionu Ford (site where Ed Medeiros' 4 turtles were tagged) seems to be near the 9 mile marker.

Sunset ~ 6:35 pm

Kawela = Kakaiaia Park (developed by Maui County under permit from FWS). This is across from FWS Refuge; - higher up is Woodworth Bee development. All at ~ 5.5 mile mark. Watched for turtles at this site until nearly dark at 7 pm. None seen.

28 AUG
SATURDAY29 AUG
SUNDAY

3 pm

28 AUG 82
SATURDAY

Returned to Pau Hava Inn;
showered and ate dinner at
Chinese "Hot Inn".

Should call - John Lichnovsky
Box 21

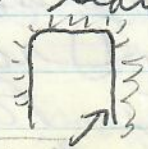
Reported sightings at ^{Kualapuu} Kawela

also - determine location of
Kalunaula landfill
(= plain old Kaulakakai dump - just
outside of town)

29 AUG 82
SUNDAY

Up ~ 7:30am; wrote up data and
letter to the 'Mau News - Box 550
Wailuku about leatherback nesting.

Went to Mass at St. Sophias Chin
Kaulakakai - 10:30am. Ate ^{lunch} breakfast
at Pau Hava.

3pm Departed for Kalunaula landfill -
a short distance past the "coconut grove."
Started searching fresh dump area
shaped  and immediately found
remains of a SL 56cm Green turtle.