

BALAZS

KIHOLO

1989-1990

2 of 2

#8 18-20 OCT 89

#9 24-26 JAN 90

#10 25-27 APR 1990

#12

START HPA #10

#9 (From p76)

CAPTURE DATE, TIME AND LOCATION: Kiholo (4/26/90)
4/25 CAPTURE data

TAG RECOVERY: Y124 (RFL) NEW TAGS: RFL LFL
Y125 OTHER TAGS:

MORPHOMETRICS

STRAIGHT CARAPACE- LENGTH: 49.4 WIDTH: 38.9
NOTCH LENGTH: 49.2

CURVED CARAPACE- LENGTH: 52.0 WIDTH: 46.5

HEAD WIDTH: 8.3

TAIL LENGTH: 12.1 (8.6)

RIGHT FRONT FLIPPER WIDTH: 8.4

PLASTRON LENGTH: 39.3

WEIGHT: 39.0 lbs (Taiwan Scale)

DESCRIPTIVE REMARKS (ie TUMORS, OTHER ABNORMALITIES)

SAMPLES COLLECTED:

(Go back to p77) for #10

62

~~121~~ HPA #10

Los Miras

CAPTURE DATE, TIME AND LOCATION: 4/25-4/26 ^{CAPTURES} data recorded

TAG RECOVERY: 8903
8904

NEW TAGS: RFL ~~8904~~ LFL
OTHER TAGS: 8903

MORPHOMETRICS

STRAIGHT CARAPACE- LENGTH: 44.4 WIDTH: 37.0

NOTCH LENGTH: 43.8

CURVED CARAPACE- LENGTH: 47.0 WIDTH: 43.0

HEAD WIDTH: 7.6

TAIL LENGTH: NT

RIGHT FRONT FLIPPER WIDTH: 7.9

PLASTRON LENGTH: 35.7

WEIGHT: 28.5 (Taiwan) 30.0 (Spring)

DESCRIPTIVE REMARKS (ie TUMORS, OTHER ABNORMALITIES)

(P_{Red})^{Already} engraved 8903 1LL- (3) = distinct
on 1st lateral left

SAMPLES COLLECTED:

#3
Wai

HPA #10

#2

New Recruit

63

CAPTURE DATE, TIME AND LOCATION: 4/25/90

TAG RECOVERY:

NEW TAGS: REL Y-657 LFL
OTHER TAGS:

Z-8(25L) point up

MORPHOMETRICS

STRAIGHT CARAPACE- LENGTH: 36.4

WIDTH:

31.1

NOTCH LENGTH: 35.9

CURVED CARAPACE- LENGTH: 38.0

WIDTH: 35.5

HEAD WIDTH: 5.9

TAIL LENGTH: 7.2 (5)

RIGHT FRONT FLIPPER WIDTH: 6.7

PLASTRON LENGTH: 30.0

WEIGHT: 16.0 (spring) 15.5 (taiwan)

DESCRIPTIVE REMARKS (ie TUMORS, OTHER ABNORMALITIES)

white Pl. no barnacles or algae

Likely New Recruit

SAMPLES COLLECTED:

CAPTURE DATE, TIME AND LOCATION:

4/25/90

TAG RECOVERY:

Y-20
Y-19

NEW TAGS: REL

LEL

OTHER TAGS:

~~Y-19~~

MORPHOMETRICS

STRAIGHT CARAPACE- LENGTH: 49.1

WIDTH: 37.8

NOTCH LENGTH: 49.0

CURVED CARAPACE- LENGTH: 52.0

WIDTH: 46.0

HEAD WIDTH: 7.8

TAIL LENGTH: 9.6 (6.5)

RIGHT FRONT FLIPPER WIDTH: 9.0

PLASTRON LENGTH: 39.3

WEIGHT: 36.0 (taiwan), 36.0 (spring)

DESCRIPTIVE REMARKS (ie TUMORS, OTHER ABNORMALITIES)

SAMPLES COLLECTED:

Thursday
25 JAN 90

HPA #9

Good
weather
NO
RAIN -
BUT
Shaded
by
Overcast

Photos taken of white sand
beach - Tourists, near stone.
Remove tree? Cleaned SPARCO plant
growths off stone.

Drove to Mauna Lani Hotel
Saw 7 turtles recently sent there
from S.P. In center court of
Hotel lobby - Can hear fancy piano
music. Turtles are separated
to different areas (3?). Also saw
and photoed graft-marked turtles
(3 total left). Eating a small shrub
branch. Interpretative signs
are excellent.

Returning to Kiholo - 4pm.
- 5pm I used a kayak to go to
center of bay just outside wave
break where kayakers had been
seeing turtles surface.
Found extensive cover of thin
Gelidium as seen in stomach.
pumping. Brought some back to
show to students.

No net captures at "Sunset", but
at 7pm George Watson saw net
go into a "V". Nothing present when
students swam to check.
Very Dark - Still w/no wind.
CALM. Low TIDE.

Thurs. -
25 JAN 90

TEMPERATURE WHERE TURTLE
feed outside SURF = 76°F
By net = 72°F

Snorkel at ~ 9:15 - 10:15 PM
9 captures, including ones by Marina,
Ferras and, rotating up front, others
Low tide, and calm conditions
allowed visibility, so snorkels
all the way around lagoon,
both sides. 1-2 captures
made after the very end.
U
Bar Upon arriving back at the
net and (untie) it, I found
a small green (very near
float line, but stop tangled
to easily breathe. Weak
but not unconscious.
Net taken in.

26 JAN. 90 All turtles worked up
FRIDAY 8:30 - 10:30 AM.

N. of Keahou Hotel
Departed Kiholo 11 PM for
Kahaluu Beach Park, just
south of White Sand Beach.

END HRA #9

HPA#10
 (Refer to footnote (67)
 on p. 113)

HPA#10

↓ TAG RECOVERIES - 29 turtles excluding 8
SL wt ORIG. SL ORIG. wt. DATE ORIG.

Y-124, 25

8903, 04

Y-19, 20

3494, 95 ²² # 62.0 67.5 lbs ^{9 1/2 YEARS} 44.9 ^{17.1 cm} 25 lbs = 42.5 lbs 10/17/80
 .71 inch/year 1.8 cm/year = 4 1/2 lbs/year

7787, 88 W 58.0 61.0 lbs ^{5 YR (S. 67)} 51.2 ^{17.2 cm} 49 lbs = 2.1 lbs/yr 8/30/84
 8 MO .47 inch/yr

3316, Y101

Y290, BBA462 HPA 9 ^{FIRST TAGGED}

7776, 77, Y15, 16

Y102, 03, 04

Y129, 30

Y23, 24

Y294, BBA469 HPA 9 ^{FIRST TAGGED}

Y282, 83 HPA 9 ^{FIRST TAGGED}

8941, 42

Y21, 22

Y241, 42

Y120, 21

Y249, 50

7785, 86, Y303

Y247, 48

Y285, 86 HPA 9 ^{FIRST TAGGED}

Y229, 30

Y291, 92 HPA 9 ^{FIRST TAGGED}

Y243, 44

Y257, 58 HPA #8 ^{FIRST TAGGED}

Y2, 3

3526, 27, Y15

Y111, 12

Y13, 14

[Red ink = Recap, for the first time since being tagged.]

APRIL 90

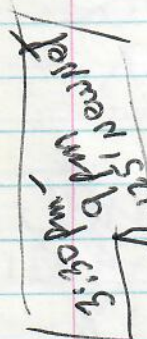
#10
HPA

58 Total
57 greens
(hawk (new))

see
p. 112

STEEP DECLINE TO BE
AFTER DARK. TURTLES
SHOULD BE GOING IN TO SLEEP?

125' net
4:30-8:00pm



WED. 25

HIGH (2.3) JUST BEFORE
DARK - MANY FEEDING?

4/25 5 1/2 hours = 36
+ (2) hand cap. 9:30am 4/26

4/26 3 1/2 hours = 15
nights snoozed = 5
2.3



For the time in following places, add or subtract from Honolulu time.

Place	hrs	mins
KANIKIE BAY, KAUAI	-1	40
NAI'AHU BAY, KAUAI	-0	34
PORT ALLEN, KAUAI	-0	35
HALEIWA, OAHU	-0	35
KANIKIE BAY, OAHU	-1	35
LAIE, OAHU	-0	34
WAIANAE, OAHU	-0	34
WAIMANALO, OAHU	-0	34
KAIKAI, MOLOKAI	-0	30
MAUI, MAUI	-1	46
HOSEA, MAUI	-0	44
HILO, HAWAII	-0	30
HONOLULU, HAWAII	0	0
KEANAKOIA BAY, HAWAII	0	34
KEANAKOIA BAY, HAWAII	0	34

- 24 mins.

NOTE: NO NIGHT SNOOZEL ON 4/25 pm

25 APRIL 90 wed.

Depart 11:35am + ALOHA FL 216.
 2 IGLOO's; Blue dive BAG; Gray suitcase.
 HAND CARRY, small igloo & calipers.
 "Freddie" hatchback rental
 from Dollar - \$20.95.

Arrive Kiholo 1:30pm, painting
 on Bakker's house. Reported to be
 done 1/91.

New 125' net - Foam float line;
 lead core bottom - 20 red floats;
 with reflector tape set at 3:30pm
 ~ 8-9' deep - estimate.

Numerous captures, starting ~ 3:45pm
 almost constant until ~ 9pm.

Net has exceptional tangling ability,
 possibly due to greater depth of
 net than other ones; and fact it is
 in shallow water.

Turtles became incredibly entangled
 in a very short time.

26 APRIL All these turtles worked up and
 THUS, released in the morning.
 Morning shankle at low tide
 by Maura + resulted in new
 Shawkbill being captured.

26 April Andy Kikuta & Larry Katchina
Thurs. came late afternoon to camp
the night.

NIGHT & Snorkel —
I saw both hawkbill
tagged this morning, and hawk
captured in Oct 89, and Jan 90.
Fast, was resting near underwater
"point".

27 April > All turtles worked up
Friday and released.

Depart ~ 1 pm.

Returned on a 3:30 pm Aloha Flight.

ORIG. TAGGED net Kiholo 17 Oct 80

4/25/90

CAPTURE DATE, TIME AND LOCATION:

TAG RECOVERY:

TIGHT - starting to ingrow very close to edge

3494 (R) 3495 (L) NEW TAGS: REL Z-9(2SR) LFL
OTHER TAGS:

MORPHOMETRICS

STRAIGHT CARAPACE- LENGTH: 62.0

WIDTH: 48.9

NOTCH LENGTH: 61.9

44.9

36.8

CURVED CARAPACE- LENGTH: 65.5

WIDTH: 57.5

HEAD WIDTH: 9.3

7.0

47.2

42.2

TAIL LENGTH: 11.5

(8.4)

7.8

RIGHT FRONT FLIPPER WIDTH: 10.7

PLASTRON LENGTH: 48.2

34.3

WEIGHT: 67.5

(Taiwan)

72.0 (spring)

25 lbs

DESCRIPTIVE REMARKS (ie TUMORS, OTHER ABNORMALITIES)

healed notch on right hind flipper (tag^{loss}?)

NO

SAMPLES COLLECTED:

#5

4/25/90

CAPTURE DATE, TIME AND LOCATION:

TAG RECOVERY:

NEW TAGS: RFL
OTHER TAGS:

Y-659

LFL Y-~~658~~

Z-10

(L2-3)

MORPHOMETRICS

STRAIGHT CARAPACE- LENGTH: 59.9

WIDTH: 47.6

NOTCH LENGTH: 58.9

CURVED CARAPACE- LENGTH: 63.0

WIDTH: 56.0

HEAD WIDTH: 9.4

TAIL LENGTH: 12.4 (8.1)

RIGHT FRONT FLIPPER WIDTH: 11.2

PLASTRON LENGTH: 49.0

WEIGHT: 66.0 (spring) 66.0 (taiwan)

DESCRIPTIVE REMARKS (ie TUMORS, OTHER ABNORMALITIES)

- many skin barnacles

- green & red algae

2LS "3" Sally Hansen nail strengthener
painted on - Dries quick!

SAMPLES COLLECTED:

possible stress
to pin
bass
(mis-
applica-
tion)

#6

4/25/90

CAPTURE DATE, TIME AND LOCATION:

Also Recovered HPA #9 24-26 JAN 90

TAG RECOVERY:

8931 (left)
8932 (right)

NEW TAGS: RFL

LFL

OTHER TAGS:

MORPHOMETRICS

STRAIGHT CARAPACE- LENGTH: 45.1

WIDTH: 36.7

NOTCH LENGTH: 44.9

CURVED CARAPACE- LENGTH: 48.0

WIDTH: 44.0

HEAD WIDTH:

TAIL LENGTH:

RIGHT FRONT FLIPPER WIDTH:

PLASTRON LENGTH: 37.0

WEIGHT: 29.0 (taiwan)

DESCRIPTIVE REMARKS (ie TUMORS, OTHER ABNORMALITIES)

recaptured from Jan. 1990 HPA #9
 8931 (1LL)
 yellow paint "3" old engraving

SAMPLES COLLECTED:

pt. cut off on all blue tags 4/26/90

#7

ORIG. TAGGED 8-30-84 P.49
Kiholo net

CAPTURE DATE, TIME AND LOCATION:

4/25/90

Z11

(2LS)

TAG RECOVERY:

7787 (right)

7788 (left)

(EXP. THIS DATE)

NEW TAGS: RFL

OTHER TAGS:

LFL

MORPHOMETRICS

STRAIGHT CARAPACE- LENGTH: 58.0

WIDTH: 46.3

NOTCH LENGTH: 57.9

51.2

41.0

CURVED CARAPACE- LENGTH: 63.5

WIDTH: 57.0

55.5

49.3

HEAD WIDTH: 8.4

8.7

TAIL LENGTH: 11.5 (7.6)

10.0

RIGHT FRONT FLIPPER WIDTH: 10.3

PLASTRON LENGTH: 47.2

41.3

WEIGHT: 61.0 (Taiwan)

49.0

61.0 (SPRING)

DESCRIPTIVE REMARKS (ie TUMORS, OTHER ABNORMALITIES)

barnacles inside old tags
Bivalves

SAMPLES COLLECTED:

Blood sample = "Male"

Marania HOUSE

#8

4/25/90

CAPTURE DATE, TIME AND LOCATION:

Kiplo

TAG RECOVERY:

Y101 (3/4R)
3316 (LFL)

NEW TAGS: RFL

OTHER TAGS:

Y660 (RH)
LFL

MORPHOMETRICS

STRAIGHT CARAPACE- LENGTH: 58.4

WIDTH: 46.8

NOTCH LENGTH: 58.3

CURVED CARAPACE- LENGTH: 62.0

WIDTH: 56.0

HEAD WIDTH: 9.1

TAIL LENGTH: 12.5 (8.5)

RIGHT FRONT FLIPPER WIDTH: 10.0

PLASTRON LENGTH: 47.4

WEIGHT: 62.5 (TAIWAN)

(SPRIT)

DESCRIPTIVE REMARKS (ie TUMORS, OTHER ABNORMALITIES)

RFL - Torn and tag loss
(from net last night?)
however, hole had
expanded already

Engraving
3315 (1 faint some yellow)
paint

loss of
3315

SAMPLES COLLECTED:

(#9 is on p 61)

10

77

(#9 on p6t)

4/25/90

CAPTURE DATE, TIME AND LOCATION:

TAG RECOVERY: ✓

NEW TAGS: RFL
OTHER TAGS:

Y661

LFL Y662

MORPHOMETRICS

STRAIGHT CARAPACE- LENGTH: 48.7 WIDTH: 38.4

NOTCH LENGTH: 48.4

CURVED CARAPACE- LENGTH: 51.5 WIDTH: 44.0

HEAD WIDTH: 7.7

TAIL LENGTH: 9.7 (6.7)

RIGHT FRONT FLIPPER WIDTH: 9.3

PLASTRON LENGTH: 39.0

WEIGHT: 36.0

DESCRIPTIVE REMARKS (ie TUMORS, OTHER ABNORMALITIES)

SAMPLES COLLECTED:

#11

4/25/90

CAPTURE DATE, TIME AND LOCATION:

light blue plastic - Miami address

TAG RECOVERY:

BBA 462 (RFL)
Y290 (LFL)

NEW TAGS: RFL

LFL

OTHER TAGS:

MORPHOMETRICS

STRAIGHT CARAPACE- LENGTH: 42.9

WIDTH: 32.2

NOTCH LENGTH: 42.7

CURVED CARAPACE- LENGTH: 46.0

WIDTH: 38.0

HEAD WIDTH: 7.3

TAIL LENGTH: 9.7 (6.6)

RIGHT FRONT FLIPPER WIDTH: 8.0

PLASTRON LENGTH: 33.7

WEIGHT: 28.0 (Taiwan)

DESCRIPTIVE REMARKS (ie TUMORS, OTHER ABNORMALITIES)

~ 30% algae cover on blue plastic bag.

Tip of blue bag cut off. (4/26/90)

Head indentation left side

Sea water temperature 75° surface
By Bart Wyatt. 79° below

SAMPLES COLLECTED:

dd 1 LL engraving (2) some yellow
" good-ok paint.

#12

79

4/25/90

CAPTURE DATE, TIME AND LOCATION:

TAG RECOVERY: ~~MISSING~~ NEW TAGS: RFL
OTHER TAGS:

Y662 RFL
LFL Z12

MORPHOMETRICS

STRAIGHT CARAPACE- LENGTH: 52.1 WIDTH: 41.7

NOTCH LENGTH: 51.4

CURVED CARAPACE- LENGTH: 55.6 WIDTH: 48.0

HEAD WIDTH: 8.5

TAIL LENGTH: 8.9 (6.4)

RIGHT FRONT FLIPPER WIDTH: 9.1

PLASTRON LENGTH: 41.0

WEIGHT: 48.0 (TAIWAN)

DESCRIPTIVE REMARKS (ie TUMORS, OTHER ABNORMALITIES)

SAMPLES COLLECTED:

Jané Provalenko

4/25/90

CAPTURE DATE, TIME AND LOCATION:

TAG RECOVERY:

NEW TAGS: REL Y-664 LFL 213

OTHER TAGS:

RH: Y-665

MORPHOMETRICS

STRAIGHT CARAPACE- LENGTH: 58.9 WIDTH: 46.5

NOTCH LENGTH: 58.7

CURVED CARAPACE- LENGTH: 62.5 WIDTH: 57.0

HEAD WIDTH: 9.4

TAIL LENGTH: 13.2 (8.4)

RIGHT FRONT FLIPPER WIDTH: 10.9

PLASTRON LENGTH: 47.4

WEIGHT: 71.0 (TAIWAN)

DESCRIPTIVE REMARKS (ie TUMORS, OTHER ABNORMALITIES)

SAMPLES COLLECTED:

#14 Amanda Roth

4/25/90

CAPTURE DATE, TIME AND LOCATION:

Also Recaptured HPA #9

TAG RECOVERY: 1252-L
1253-RNEW TAGS: REL
OTHER TAGS:

LEL

MORPHOMETRICS

STRAIGHT CARAPACE- LENGTH: 44.7

WIDTH: 35.5

NOTCH LENGTH: 44.3

CURVED CARAPACE- LENGTH: 48.0

WIDTH: 43.0

HEAD WIDTH:

TAIL LENGTH:

RIGHT FRONT FLIPPER WIDTH:

PLASTRON LENGTH: 35.0

WEIGHT: 26.5 (taiwan)

DESCRIPTIVE REMARKS (ie TUMORS, OTHER ABNORMALITIES)

old 1252 (3) yellow paint present
engraved

SAMPLES COLLECTED:

left eye - hemorrhaged &
protrusion when
upside down

#15

4/25/90

CAPTURE DATE, TIME AND LOCATION:

TAG RECOVERY:

NEW TAGS: RFL Y000 LFL 214
OTHER TAGS:

MORPHOMETRICS

STRAIGHT CARAPACE- LENGTH: 56.0

WIDTH: 43.9

NOTCH LENGTH: 55.1

CURVED CARAPACE- LENGTH: 60.0

WIDTH: 53.0

HEAD WIDTH: 9.2

TAIL LENGTH: 11.4 (8.2)

RIGHT FRONT FLIPPER WIDTH: 10.5

PLASTRON LENGTH: 44.9

WEIGHT: (taiwan) 56.5

DESCRIPTIVE REMARKS (ie TUMORS, OTHER ABNORMALITIES)

many skin barnacles
lots of skin algae

SAMPLES COLLECTED:

#16

4/25/90

CAPTURE DATE, TIME AND LOCATION:

TAG RECOVERY:

RFL-7776

LFL-7777

Y15 (4-5) (R)

116 (RH)

NEW TAGS: RFL

LEL

OTHER TAGS:

MORPHOMETRICS

STRAIGHT CARAPACE- LENGTH: 59.4

WIDTH: 47.2

NOTCH LENGTH: 59.2

CURVED CARAPACE- LENGTH: 64.0

WIDTH: 58.5

HEAD WIDTH: 9.0

TAIL LENGTH: 11.4 (8.5)

RIGHT FRONT FLIPPER WIDTH: 10.0

PLASTRON LENGTH: 49.5

WEIGHT: 68

DESCRIPTIVE REMARKS (ie TUMORS, OTHER ABNORMALITIES)

barnacles & fuzzy algae in tag

SAMPLES COLLECTED:

#17

9/25/90

CAPTURE DATE, TIME AND LOCATION:

TAG RECOVERY:

Y104(3-4L)
Y103 LFL
Y102 RFL

NEW TAGS: RFL

LFL

OTHER TAGS:

MORPHOMETRICS

STRAIGHT CARAPACE- LENGTH: 58.5 WIDTH: 45.9

NOTCH LENGTH: 58.2

CURVED CARAPACE- LENGTH: 62.0 WIDTH: 57.0

HEAD WIDTH: 9.0

TAIL LENGTH: 13.2(9.5)

RIGHT FRONT FLIPPER WIDTH: 10.5

PLASTRON LENGTH: 47.6

WEIGHT: 60

DESCRIPTIVE REMARKS (ie TUMORS, OTHER ABNORMALITIES)

44 burrowing barnacles
Left ilth marginal healed notch

SAMPLES COLLECTED:

#18

4/25/90

CAPTURE DATE, TIME AND LOCATION:

Also Rec HPA #9

TAG RECOVERY: 3952 RFL
3951 LFL
295 (3-4 R)
296 LH

NEW TAGS: RFL
OTHER TAGS:

LFL 3951

MORPHOMETRICS

STRAIGHT CARAPACE- LENGTH: 57.4 WIDTH: 45.3
NOTCH LENGTH: 56.9
CURVED CARAPACE- LENGTH: 61.0 WIDTH: 53.5
HEAD WIDTH: 8.8
TAIL LENGTH: 10.8 (7.4)
RIGHT FRONT FLIPPER WIDTH: 9.9
PLASTRON LENGTH: 46.4
WEIGHT: 57 lbs

DESCRIPTIVE REMARKS (ie TUMORS, OTHER ABNORMALITIES)

old 1ST ILL 3951 (3 w/ yellow paint)
small extra scute 4-5 central

SAMPLES COLLECTED:

#19

Capture, date, time, location: 4/25/90

Tag recovery: Y-130 LFL
Y-129 RFL

New tags RFL: 215 (ASR)
LFL:

other tags:

MORPHOMETRICS

Straight Carapace - Length : 54.3
notch Length : 53.8

width : 43.5

Curved Carapace - Length : 58.5

width : 50.0

Head width : 8.8

Tail Length:

Right Front Flipper width : 10.4

Plastron Length : 42.7

Weight : 55.5

Descriptive Remarks :

4 barnacles in belly

Samples Collected

Laura
Rice

Capture, date, time, location: 4/25/90

Tag Recovery: Y-23 RFL
Y-24 LFL

New tags RFL:
LFL:

Other tags:

MORPHOMETRIC:

Straight Carapace - Length: 47.4

width: 38.2

Notch - Length: 46.9

Curved Carapace - Length: 50.5

width: 45.0

Head Width: 7.8

Tail Length: 8.1 (5.3)

Right Front Flipper width: 8.5

Plastron Length: 38.0

Weight: 36.5

Descriptive Remarks:

Samples Collected:

Capture, Date, time location: 9/25/90

Tag Recovery: Y294 LFL* New tags RFL:
 RFL BBA 469 (90% algae) LFL:
 ↳ paint clipped Other tags:

MORPHOMETRIC:

Straight Carapace - Length: 44.7 Width: 36.1
 Notch - Length: 44.4

Curved Carapace - Length: 47.5 Width: 42.0

Head Width: 7.3

Tail Length: 9.1 (6.5)

Right Front Flipper Width: 7.9

Plastron Length: 35.5

Weight: 27.0

Descriptive Remarks:

old 1st ILL Y 294 (3) yellow paint

Samples Collected:

Jane Provalenko 09/26/14

Capture, Date, Time, Location

4/25/90

Tag Recovery Y282 (LFL)
Y283 (RFL)new Tags RFL:
LFL:

MORPHOMETRIC

straight carapace - Length: 46.7 width: 39.8
Notch Length: 46.0curved carapace - Length: 49.5 width: 47.0
head width:

tail length: 7.9 (5.0)

right front flipper width: 7.1

Plastron length: 37.1

Weight: 27.0

Descriptive Remarks:

dd engraving 1LL(Y282)(#2) yellow paint

Samples collected

#23

4/25/90

capture, Date, time, location

Tag Recovery:

RFL 8941

LFL 8942

New Tags RFL:

TFL:

MORPHOMETRIC

4

straight carapace length 46.3 width: 36.9

notch length 45.6

curved carapace length 49.0 width: 43.0

head width: 7.3

tail length: 9.9 (6.9)

right front flipper width: 7.6

Plastron length: 36.0

weight 29.0 (TAIWAN)

Descriptive Remarks

- possible hair taken from anus, + placed in tube.

samples collected "FOUNTAIN" Grass

#24

4/25/90

capture date, time, location

Also Recaptured ~~PA~~ #9

tag recovery

LFL 7752

RFL 7751

Y1(3-4R)

MORPHOMETRIC

straight carapace length: 49.0

width: 37.1

notch length: -

curved carapace length: 53.0

width: 45.5

head width: 7.7

tail length: 10.5 (7.6)

right front flipper width 9.2

Plastron length: 38.8

weight 34.5

descriptive remarks

samples collected

#25

4/25/90

capture, date, time, location

tag recovery

new TAGS RFL:

LFL: Y-22

TFL:

RFL: Y-21

MORPHOMETRIC

straight carapace length: 46.3 width: 36.7

notch length: 46.1

curved carapace length: 50.0 width: 43.0

head width: 7.6

tail length: 8.7 (6.5)

right front flipper width: 8.6

Plastron length: 37.0

weight 32.0

Descriptive Remarks:

Samples collected

#26

HPA #10

93

4/25/90

capture, date, time, location

Also Recaptured HPA #9

tag recovery

LFL: Y-114 (exp) This date

RFL: Y-113 (exp) This date

new tags:

RFI:

TFI:

Morphometric

Straight Carapace length 47.3 width: 37.3

notch length 46.4

curved carapace length: 50.0 width: 42.0

head width - 7.9

tail length - 11.2 (7.7)

right front flipper width: 9.0

plastron length 37.2

weight 30.5

Descriptive remarks

old engrave - 1st LL Y-113 (3) yellow paint

Samples collected

94

New Recruit

HPA #10

#27

4/25/90

capture, date, time, location

tag recovery:

NONE

new tags:

RFL: Y-662

LFL: Z-7

Morphometric

Straight carapace length: 39.0 width: 33.3

notch length: 38.5

curved carapace length: 41.0 width: 38.0

head width: 6.3

tail length: 7.9 (4.3)

right front flipper width: 6.7

plastron length: 31.3

weight 19.0

Descriptive remarks:

white plastron

- Likely New Recruit

Samples collected:

Kristen
Glaspey :

#28

New
Recruit 95

4/25/90

Capture, date, time, location

tag recovery:
none

new tags:
RFL Y-668
LFL Z-16

Morphometric.

straight carapace length: 38.8 width: 32.6
notch length: 38.3

curved carapace length: 40.5 width: 38.0
head width: 6.3
tail length: 6.6 (4.3)
right front flipper width: 7.7
plastron length: 30.7

weight: 18.5

descriptive remarks
whitish plastron Likely New Recruit.
6 pictures w Cassie Quaintance
(last 2 w electronic flash)

Samples collected

#29

capture, date, time, location

4/25/00

tag recovery:

none

new tags:

RFL: Y-669

LFL: Z-18

morphometrics

straight carapace length: 50.5 width: 39.6

notch length: 50.2

curved carapace length: 54.5 width: 46.5

head width: 7.8

tail length: 9.9 (7.0)

right front flipper width: 8.4

plastron length: 40.1

weight: 39.5

Descriptive Remarks

Samples collected

New Recruit 97

#30

4/25/90

Hand capture by Monica 4/26/90 9:30am

Capture, date, time, location

hand capture by Monica Traub, 9:30 AM, 4-26-90

tag recovery:

none

new tags:

RFL: Y-670

LFL: Z-19

morphometrics

straight carapace length: 42.4 width: 37.0

notch length: 41.8

curved carapace length: 45.0 width: 43.0

head width: 6.7

tail length: 6.9 (4.9)

right front flipper width: 7.6

plastron length: 39.4

weight: 22.0

Descriptive remarks:

white plastron

hand-capture by Monica Traub - 9:30 AM (4-26-90)

Likely New Recruit

Samples collected:

#31

capture, date, time, location 9/25/90

tag recovery:

LFL - Y-341

RFL - Y-242

new tags:

morphometrics

straight carapace length 47.3 width 36.6

notch length 4.1

curved carapace length: 50.0 width: 43.5

head width: 7.5 tail length: 10.2 (6.5)

RFF width: 8.3 plastron length: 38.4

weight: 32.5

photo is Sherrie Miller

#32

capture, date, time, location: 9/25/90

Also Recaptured HPA#9

tag recovery:

LFL: 8715

new tags:

RFL: 8714

morphometrics

straight carapace length 46.3 width: 35.7

notch length —

curved carapace length 49.0 width 42.0

head width: 7.4 tail length: 10.0 (6.9)

RFF width: 8.0 plastron length: 38.5

weight: 32.5

engraving:

LL 1LL - 87H (3 yellow paint)

#33

4/25/90

capture, date, time, location:

tag recovery: LFL: y-121 (exp) ^{this date} new tags:
RFL: y-120 (exp)

morphometrics

straight carapace length: 50.3 width: 39.4

notch length: 49.9

curved carapace length: 53.0 width: 47.5

head width: 8.0

tail length: 10.3 (7.3)

RFF width: 9.2

plastron length: 39.8

weight: 43.0

#34

capture, date, time, location: HAWKSBILL

hand capture by Monica Traub on 4/26/90 at 1:00 p.m.

tag recovery: none

new tags: LFL: D-098

Size
#1

RFL: D-099

morphometrics

straight carapace length: 27.9 width: 21.6

notch length: 26.7

curved carapace length: 28.0 width: 25.5

head width: 4.3

tail length: 4.5 (3.25)

RFF width: 4.4

plastron length: 27.0

weight: 5.5 lbs

NOTES:

- Little crustaceans crawling out from under the planks.

- caught $\frac{3}{4}$ way into pond. - Resting on bottom. Released same place.

#35

Laura Rice

9/25/90

capture, date, time, location:

tag recovery: ~~unmarked~~ new tags: Y671 RFL
Z17 (LFL)

morphometrics

straight carapace length: 53.2 width: 40.6

notch length: 53.0

curved carapace length: 46.5 width: 49.5

head width: 8.5 tail length: 10.7 (7.5)

RFF width: 9.1 plastron length: 42.4

weight: 44.5

has 7 scales on each FF
instead of 6; ∴ FF is small size.

#36

capture, date, time, location:

tag recovery: ~~unmarked~~ new tags: Z20 (LFL)
Y672 RFL

morphometrics

straight carapace length: 56.4 width: 43.7

notch length: 56.0

curved carapace length: 60.0 width: 52.0

head width: 9.1 tail length: 13.9 (10.5)

RFF width: 9.7 plastron length: 43.6

weight: 50.0

END
4/25 9/26 AM
pm

#37

1 = faint
2 = good (ok)
3 = very distinct

Green 101
67.6%
25 Resurgent
12 NEW
Green 37
1 hawkspinn
(new)

4/25/90

capture, date, time, location:

check
HPA #7

tag recovery y250 (LHD)
y249

new tags:

E 38
TOTAL

morphometrics

straight carapace length: 42.8 width: 34.9

notch length: 42.2

curved carapace length: 45.0 width: 40.5

head width: 7.0 tail length: 8.3 (5.9)

RFF width: 7.0 plastron length: 35.0

weight: 18.0

heeled crescent wounds left front flipper

turtle barnacle (3.2 x 3.0) + left it on

old engraving ALL y249 (2)

capture, date, time, location:

#38

tag recovery 7786 (RFL) Y303 (RH)
7785 (LFL)

morphometrics

straight carapace length: 60.0 width: 45.9

notch length: 59.6

curved carapace length: 64.0 width: 57.0

head width: 9.1 tail length: 12.0 (8.5)

RFF width: 9.6 plastron length: 49.0

weight: 68

old engraving: 1LL 7785(3) + 2LL 7785(2)

102

4/27/90
Friday

Please Press HARD w/Pencil

Cassie Quaintance
hand capture 10 PM

(J39)

4/26/90

Tag Rec: LFL Y248
RFL Y247

New Tags:

4/27/90

(1)

Straight length - 50.2
Notch: 49.8

width: 40.1

Curved length: 53.0

width: 46

head - 7.9

Plastron - 40.3

RFF - 9.4

Tail - 10.2 (7.8)

Weight: 38.5

NOTES:

4/26/90

(#210)

Cassie Quaintance hand capture 10 PM

Tag Rec: -

New tags: LFL Z21 RHY67

RFL Y673

Straight length: 62.3

width: 50.4

Notch: 62

Curved length - 67

width - 61.5

(2)

head - 9.8

plastron - 51.4

RFF - 10.5

tail - 13.0 (9.0)

Weight - 72.0

Notes:

#41

4/26/90

hand capture

Tag Rec: -

New Tags - RFL Y 675

LFL Z 22

Straight length: 37.7

width: 33.8

notch: 37.1

curved length: 39.5

width: 38

③

head - 6.1

plastron - 31.7

RFF - 6.4

tail - 5.7 (3.6)

weight - 17

Notes - Whitish plastron

likely new Recruit

Many small skin bands on whitest skin.

- picture w/ Chris Kopra

But heavy scum on carapace.

#42

4/26/90

Tag Rec - LFL Y 285

New Tags -

RFL Y 286

Straight length - 47.5

width - 36.8

notch - 47.2

curved length - 50.0

width - 43.5

④

head - 7.4

plastron - 37.6

RFF - 8.8

tail - 9.7 (7.1)

weight - 31.5

Notes - engraving 1LL Y-285 (3) Yellow Paint.

hand capture

#43

Claire Johnson

4/26/90

Tag Rec Y-229 RFL (Exp.) ^{Two} New tags
 Y-230 LFL (Exp.)

Straight length 54.8 width 42.6
 notch 54.5

curved length 58.5 width 50.5

⑤

head 8.6

plastron 45.2

RFF 9.9

tail 11.0 (8.0)

weight 51 lbs.

notes -

engraving 2LL - Y-229 (1) yellow

4/26/90

#44

Tag Rec

new tags - Y-676 RFL

Z-23 LFL

Straight length 37.7

width 32.9

notch 37.1

⑥

curved length 39.5

width 38.0

head 6.2

plastron 31.2

RFF 7.3

tail 6.7 (4.3)

weight 17.0

notes:

Cikely
New
Recruit

Skin algae - yellowish tinge to PL
 sm. burrowing barnacles in the mid-line
 beam of plastron - (removed)

#45

New Recruit 105

4/26/90

Tag Rec - New tags - Y-677 RFL
Z-24 LFL

Straight length 36.8 width 31.7
notch 36.3
Curved length 39.0 width 37.0

7

head 5.9 plastron 29.4
RFF 6.7 tail 5.6 (3.7)

weight 16 lbs.

notes: burrowing barnacles (mid line) 22 avg.

heavy red algae on plastron + scum
whitish PL

Likely New Recruit

Kristen Gaspey 4/26/90 (#46)

ALSO RECAP
HPA #9

tag recovery: (ISR) 8708 RFL right hind - X-284
(154) 8707 LFL

straight length: 51.0 width: 41.3
notch: 50.5
curved length: 54.5 width: 47.5

8

head: 7.9 plastron: 41.3
Right front flipper: 8.6 tail: 10.7 (7.7)
weight: 42.5

notes: left hind flipper - holed floppy flipper
(gill net entanglement?)

engraving: 1LL: 8707 (2 yellow paint)

4/26/90

#47

tag recovery: RFL-4-292 new tags:
LFL-4-291straight length: 47.8 width: 37.3
notch: 47.2

(9) curved length: 51.0 width: 45.5

head: 8.1 plastron: 38.8
right front flipper: 8.9 tail: 11.3 (8.2)
weight: 38.0NOTES: - 2 burrowing barnacles removed from belly
- engraving: 2LL: 4-291 (3 yellow paint)

#48

4/26/90

tag recovery: RFL-4-244 new tags:
RFL-4-243straight length: 51.3 width: 39.8
notch: 50.9 (chipped)

curved length: 55.0 width: 49.0

(10)

head: 8.5 plastron: 41.0
right front flipper: 9.2 tail: 12.2 (8.7)
weight: 45.0

NOTES

4/26/90

#49

tag recovery: LFL: Y-258

RFL: Y-257 (ulva inside tags)

straight length: 55.3 width: 46.4

notch: 54.6

curved length: 59.0 width: 52.0

(11)

head: 8.8

plastron: 43.9

right front flipper: 9.9

tail: 11.1 (7.4)

weight: 52.0

NOTES: engraving: 1LL: Y-257 (a)

(50)

tag recovery: NONE 4/26/90 new tags: RH: Y-679

RFL: Y-678 LFL: Z-25

Jane

Provalenko straight length: 60.9

width: 47.7

notch: 60.6

curved length: 64.5

width: 56.5

(12)

head: 9.1

plastron: 48.4

right front flipper: 10.6

tail: 13.2 (9.0)

weight: 67.0

NOTES: 34 borrowing barnacles

#51

4/26/90

#13

tag recovery: none

new tags:

RFL: Y-680 LFL: Z-26

straight length: 52.2

width: 39.2

notch: 52.0

curved length: 55.0

width: 48.9

head: 8.0

plastron: 42.7

right front flipper: 9.2

tail: 12.7 (9.3)

weight: 46.0

NOTES

#52

#14

4/26/90

tag recovery: none

new tags:

RFL: Y-681 LFL: Z-27

straight length: 44.3

width: 34.5

notch: 44.1

curved length: 47.0

width: 39.5

head: 7.5

plastron: 35.4

right front flipper: 8.2

tail: 7.8 (5.4)

weight: 23.5

NOTES

(53)

4/26/90

#15 tag recovery: LFL: y-3 new tags:
RFL: y-2
straight length: 53.8 width: 45.7
notch: 53.6
curved length: 56.5 width: 51.5

head: 9.0 plastron: 42.5
right front flipper: 9.8 tail: 11.5 (8.6)
weight: 53.5

NOTES:

Engraving - 1LL Y 2(2)

Marania House

(54) tag recovery LFL: Y15 (3/4L) new tags:
4/26/90 3526 LFL 3527 RFL
#16 straight length: 53.1 width: 41.2
notch: 53.0
curved length: 56.5 width: 50.0

head: 8.9 plastron: 42.6
right front flipper: 9.2 tail: 12.5 (8.6)
weight: 49.0

NOTES:

4/26/90

#55

tag recovery: Y111 (LFL)

Y112 (RFL)

new tags:

straight length: 45.4

width: 36.3

notch: 44.9

#17

curved length: 48.0

width: 43.0

head: 7.2

plastron: 36.6

right front flipper: 7.7

tail: 7.1 (4.7)

weight: 26.0

NOTESold healed injury to tail.
Engraving LL Y111 (3)

#56

tag ~~Y111~~ NONE

Newtags: Y682 RFL

Z28 LFL

#18

straight length: 44.1

width: 36.1

notch: 44.0

curved length: 47.0

width: 42.0.

4/26/90

head: 6.9

plastron: 35.2

right front flipper: 8.0

tail: 10.0 (7.0)

weight: 26.0

NOTES:

4/26/90

#57 tag recovery: None New tags: Y683 (RFL)
 #19 straight length: 51.9 width: 42.0
 notch: 51.8
 curved length: 55.0 width: 50.0

head: 8.3 plastron: 41.7
 right front flipper: 10.0 tail: 12.0 (8.9)
 weight: 51.0

NOTES:

#58 tag recovery (LFL): 8702 New tags:
 Also Recap (RFL): 8703
 #20 IHPA #9 (LH): Y-25Z

4/26/90 Straight length: 50.6 Width: 39.3
 notch: 50.2
 Curved length: 53.5 Width: 47.5

head: 7.9 Plastron: 39.9
 Right front flipper: 8.9 tail: 10.4 (6.8)
 Weight: 36.0

Notes:

Engraved: 1 LL 8702 (2) yellow paint

4/26/90

21 TOTAL - All greens

12 Recoveries (57.9%)

9 new

#21

Tag recovery: Y13 (LFL)
Y14 (RFL)

New tags: Y684 (RH)

#59

Straight Length: 52.1

Width: 41.0

Notch: 51.9

Curved Length: 55.5

Width: 49.0

Head: 8.2

Plastron: 41.0

Right Front Flipper: 9.0

Tail: 10.0 (7.0)

Weight: 47.5

101	① Z-8; Y657	36.4	16 lbs	HPA #10 likely New Recov. 75%
	② Z-7; Y662	39.0	19 lbs	③ Z16; Y668 38.8 18.5 lbs
				④ Z19; Y670 42.4 22 lbs
37	12			⑤ Z22; Y675 37.7 17 lbs
21	25			⑥ Z24; Y677 36.8 16 lbs

Greens = $\frac{58}{\text{Total}}$ 37 Recoveries (63.7%)

NOTE 8 of 13 greens Recap HPA #9 also recap HPA #10

74° top
75° bottom

} Lagoon temperatures

77° top
79° bottom

} Bay temperatures

Yah! DONE!

IT was Fun!
Thanks a lot!



Marania

Balazs
Growth HPA .124

HONOLULU LABORATORY
Southwest Fisheries Center
2570 Dole Street
Honolulu, HI 96822-2396

Growth data for 13 green turtles and one hawksbill recaptured at Kiholo Bay, North Kona, Hawaii during HPA Expedition #9, January 24-26, 1990.

Tag No.	HPA date first tagged	Straight carapace (cm)			Weight (lb)		
		initial	recovery	cm/mo	initial	recovery	lbs/mo
<u>Hawksbill</u>							
Y-254	10/18/89	32.9	36.2	1.10	9.5	11.0	.5
<u>Green Turtles</u>							
↘ 8714, 15	2/11/88	42.4	45.8	.15	--	30.5	--
↘ Y-252, 53	10/18/89	44.8	44.9	0	25.5	27.0	.5
↘ 8707, 08	10/22/87	45.3	50.4	.19	--	40.0	--
↘ 8702, 03							
Y-251	10/21/87	43.4	49.9	.24	--	35.5	--
↘ Y-113, 14	3/1/89	43.9	46.6	.25	26.0	30.5	.4
Y-259, 60	10/19/89	41.8	42.4	.20	23.0	22.5	--
↘ 8951, 52							
Y-295, 96	6/29/88	55.1	56.8	.09	50.5	55.5	.3
↘ 7751, 52							
Y-1	10/26/88	45.7	48.7	.20	27.5	34.5	.5
Y-96, 97	3/1/89	43.6	47.3	.34	27.0	34.0	.6
8939, 40	4/28/88	49.3	52.4	.15	37.5	43.5	.3
7774, 8935, 36	4/28/88	57.3	58.3	.05	56.0	60.5	.2
7755, 56							
Y-126	3/2/89	48.7	51.0	.21	39.5	43.0	.3
↘ 8931, 32	4/27/88	42.7	44.9	.10	26.5	28.0	.1

NOTE: .15 cm/mo = 1.8 cm (.7 inch)/year
.25 cm/mo = 3.0 cm (1.2 inch)/year
.5 lb/mo = 6 lbs/year

NOTE: 8 Turtles MARKED (↘) above were among those recaptured during HPA #10; other turtles recaptured during HPA #10 (29 more ∴ 8 + 29 = 37) see p.

HPA #9

13+1

TAG RECOVERIES

24-26 JAN 90

(No new long terms - ALL from HPA)

HAWKS BILL GREENS	STRAIGHT LENGTH	WEIGHT	DATE	STRAIGHT	ORIGINAL WT
Y-254; D095; D097	36.2	11.0		32.9	9.5
8714, 15	45.8	30.5	2/11/88	42.4	-
Y-252, 53	44.9	27.0	10/18/89	44.8	25.5
8707, 08	50.4	40.0	10/22/87	45.3	-
8702, 03, Y-251	49.9	35.5	10/21/87	43.4	-
Y-113, 14	46.6	30.5	3/1/89	43.9	26.0
Y-259, 60	42.4	22.5	10/19/89	41.8	23
3951, 52 (Y-295, 96)	56.8	55.5	JUNE 88 HPA #4	55.1	
*7751, 52, Y-1	48.7	34.5	10/26/88	45.7	27
Y-96, 97	47.3	34.0	3/1/89	43.6	27
8939, 40	52.4	43.5	4/28/88	49.3	37.5
*7774, 8935, 36	58.3	60.5	4/28/88	57.3	56.0
*7755, 56, Y-126	51.0	43.0	3/2/89	48.7	39.5
8931, 32	44.9	28.0	4/27/88	42.7	26.5

APPARENT "NEW RECRUITS" (Small, white belly, no tags)

HPA #9

BBA 470, Y293	39.6	15.5
BBA 461, Y289	37.7	14.0
BBA 462, Y-290	42.2	22.0

HPA #8 18 TAG RECOVERIES

115

18-20 Oct. 89

	<u>STRAIGHT</u>	<u>WT.</u>	<u>DATE</u>	<u>STRAIGHT</u>	<u>ORIG.</u>
					<u>WT.</u>
8702, 03 (Y251)	49.0	34.5			
8909, 10	49.0	41.0			
8712, 13	47.7	36.0			
8709, 10	56.6	58.0			
8934, 35, 3317, 7782	65.9	86.0			
7751, 52, Y-1	48.2	34.0			
7785, 86, Y303	59.6	67.0			
8935, 36, 7774	57.9	58.0			
8937, 38	44.3	31.0			
Y105, 06	47.9	34.0			
Y111, 12	44.5	27.0			
8716, 17	49.1	43.0			
Y124, 25	48.8	37.0			
7770, 71, Y-25	47.9	35.5			
Y-247, 48	49.2	37.0			
Y-2, 3	53.0	53.0			
8903, 04	43.5	27.0			
Y245, 46	51.7	44.0			

APPARENT "New Recruits"

HPA #8 - Possibles only - NOT clear-cut like #9 HPA

Y255, 56	41.8	21.0
Y259, 60	41.8	23.0

Summary of 24 green turtles tagged and resighted
at Kiholo Bay, Hawaii, 18-20 October 1989

Compiled by George H. Balazs
National Marine Fisheries Service, NOAA

HPA
#8

Inconel tag No.	Carapace length (cm)		Weight (lb)	Notation
	Straight standard/notch	Curved		
18-19 October 1989 (5 turtles)				
8702, 03 (Y251LH)	49.0/48.7	52.0	34.5	NP; a; photo of 8702
8909, 10	49.0/48.8	52.0	41.0	NP; a
Y252, 53	44.8/44.4	48.0	25.5	NP
8712, 13	47.7/46.7	50.5	32.0	NP; a
8709, 10, 11	56.6/56.2	60.5	58.0	NP
19-20 October 1989 (19 turtles)				
8934, 35, 7782, 3317	65.9/ --	70.0	86.0	
7751, 52, Y1	48.2/ --	52.0	34.0	LHF line mutilation
7785, 86, Y303	59.6/59.2	63.0	67.0	NP; a
8935, 36, 7774	57.9/ --	62.0	58.0	a
8937, 38	44.3/44.1	46.5	31.0	
Y105, 06	47.9/ --	51.0	34.0	a; photo of Y105
Y111, 12	44.5/44.2	47.0	27.0	
8716, 17	49.1/ --	52.5	43.0	a; damaged PC's
Y124; 25	48.8/ --	51.0	37.0	a; damaged PC
7770, 71, Y25	47.9/47.7	51.5	38.8	
Y255, 56	41.8/41.5	44.5	21.0	P
Y248, 49	49.2/48.8	51.5	37.0	a
Y2, 3	53.0/52.7	56.0	53.0	P; a
8903, 04	43.5/42.8	45.0	27.0	a
Y245, 46	51.7/51.4	55.0	44.0	a
Y257, 58	53.5/53.0	56.5	40.5	NP
Y259, 60	41.8/41.4	44.5	23.0	P
Y261, 62	42.4/41.7	44.5	22.0	NP; 3.5 cm barn
Y263, 64	49.5/49.0	52.0	41.0	NP
Hawksbill hand-captured, 19 October 1989, at 2230 hours				
Y254, D095, D097	32.9/31.2	34.5	9.5	Photos

NP = Nonprudent behavior (9 total).

P = Prudent behavior (3 total).

a = Turtle also captured during HPA No. 7, 3-5 May 1989 (12 total).

All turtles deeply engraved with Dremel moto tool on first lateral left.
All HPA No. 7 turtles had been engraved on second lateral left. Substantial regrowth apparent during the 5-month interval.

New tags applied during HPA No. 8 = Y251-Y264 (14 total).

Summary of growth rates for
15 green turtles, Chelonia mydas, tagged
and recaptured at Kiholo Bay, Hawaii
--NMFS/HPA Research Project--

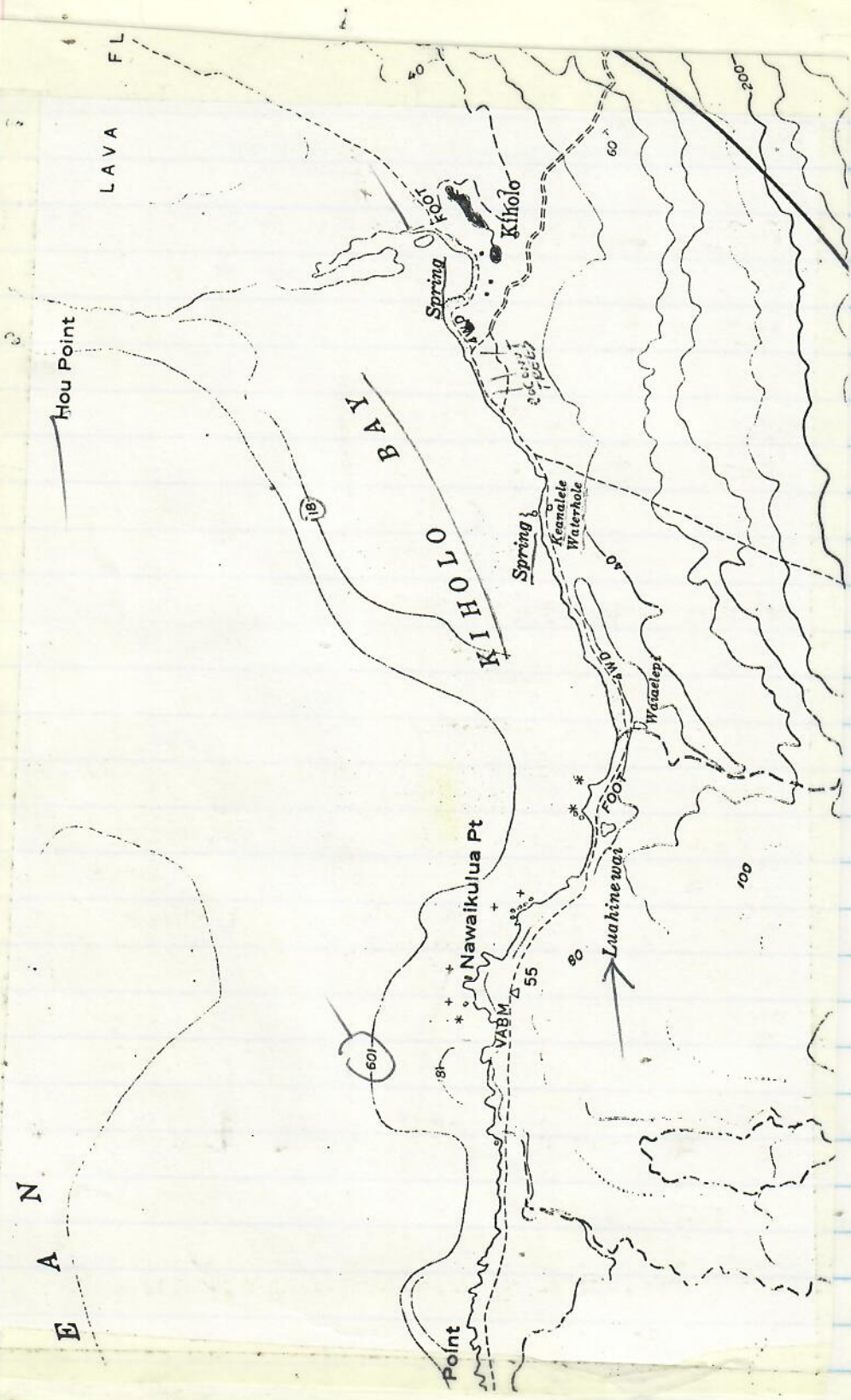
Compiled by George H. Balazs

As of
HPA #7

Need
update

Primary tag No.	Initial straight carapace length (cm)	Recapture interval in years	Growth rate in cm/year
7770	38.0	4.2	1.57
7751	45.7	4.2	1.76
7755	48.7	4.6	1.30
7768	50.4	4.2	1.98
3526, 27, Y15	52.6	7.7	1.32
7759	56.5	3.5	0.83
7774	57.3	3.8	1.13
7776, 77, Y15, Y16	57.5	4.6	1.00
3315, 16, Y15	58.2 49.9	9.0	1.70
7778, 485, 86, Y303	51.8 60.6	3.2	0.87
7789	63.2	4.3	0.79
3476	64.3	7.3	1.77
3317	65.8	8.9	1.83
3499	67.4	8.0	1.20
3487	70.4	8.3	1.50

$\bar{n} = 16$
 $\bar{x} = 1.37$ cm/year



SUMMARY OF 37 GREEN TURTLES TAGGED AND RESIGHTED AT KIHOLE BAY, HAWAII,
3-5 MAY 1989

Compiled by George H. Balazs (NOAA Fisheries)
and
David Gulko (Hawaii Preparatory Academy)

HPA #7

Inconel tag No.	Carapace length (cm)		Weight (lb)	Notation
	Straight standard/notch	Curved		
3-4 May 1989 (9 turtles)				
Y-229*, 30	52.7/52.6	56.5	44	Sluice gate
Y-231*, 32	44.6/44.3	47.5	29	P
Y-233*, 34	48.4/47.9	52.0	36.5	P
Y-235*, 36	38.2/37.8	40.5	18.5	NP
Y-237*, 38	47.9	51.0	36.5	RHF 1/2 missing
Y-105*, 06	46.6/46.5	50.0	27.5	a; NP
8905*, 06	44.8/43.9	47.5	27	b; NP
3315*, 16	58.0	62.0	60.5	c; NP
Y-101				
8947*, 48, 49	70.3/70.1	75.0	97	d
4-5 May 1989 (28 turtles)				
8903*, 04	41.6/40.9	43.5	24	e; P
8702*, 03	47.9/47.3	51.0	33	f; NP
Y-239*, 40	56.1	60.0	56.5	NP
Y-102*, 03, 04	56.9	60.5	58.5	g; NP
Y-241*, 42	44.0/43.9	46.5	27	h; NP
8909*, 10	47.4/47.1	36	36	i; NP
Y-21*, 22	43.5/43.2	46.5	27.5	j; NP
Y-133*, 34	42.4	44.5	23.5	k; NP
8941*, 42	43.8/43.4	46.5	26	l; P
Y-117*, 18, 19	63.4/63.2	67.5	67.5	P
Y-243*, 44	48.8	53.5	39	m; NP; LH line
7789*, 90	63.4	67.0	73.5	scar
Y-18				n; NP
7774*, 8935, 36	57.7	61.5	56.5	o; NP
Y-124*, 25	47.6	50.0	35	NP; pond capture
Y-245*, 46	51.1/50.9	54.5	42.5	NP
Y-247*, 48	47.7/47.4	50.0	33.5	p; NP
8929*, 8930	45.3/45.1	48.5	30	q; NP; LH injury
Y-142*, 43	52.1/51.9	55.5	39.5	r; shark injuries
Y-249*, 50	40.8	43.0	22	
8716*, 17	47.6	50.0	37.5	

= Recoveries (12 Total)
made 18-20 OCT. 89 HPA #8

Summary of turtles at Kiholo Bay. --Continued.

Inconel tag No.	Carapace length (cm)		Weight (lb)	Notation
	Straight standard/notch	Curved		
Y-96*, 97	44.2./43.5	47.0	29.0	S; P
8939*, 40	50.3/50.0	53.5	40.5	t; P
8712*, 13	46.7/46.1	49.5	32	u; NP
Y301*, 02	50.2	54.5	41.5	NP
Y-2*, 3	51.7/51.0	54.0	47.5	w; NP
Y-122*, 23	51.7/50.9	55.0	42.5	x; NP
7785*, 86, Y303	59.0/58.3	62.5	66	y; P
7755*, 56	49.2/49.0	52.0	40.5	z; P
Y126				

* = Carapace engraved with Dremel "free-wheeler" moto tool.

P = Prudent behavior (10 total)

NP = Nonprudent behavior (24 total)

a-z = Long-term tag resightings. See accompanying data summary of growth rates.

Summary of green sea turtle, Chelonia mydas, tagged at Kiholo Bay
prior to the October 1987 initiation of the
NOAA Fisheries/Hawaii Preparatory research project.

compiled by
George H. Balazs

<u>Study dates</u>	<u>Total no. captured</u>	<u>No. newly tagged</u>	<u>No. tag resightings</u>
14-15 May 73 (Monel tags only)	15	15	-
18-21 March 80 (Inconel tags)	12	12	0
14-20 Oct. 80	19	11	8
5-7 March 81	7	2	5
7-10 Aug. 84	20	15	5
29-31 Aug. 84	9	4	5

Summary of 15 turtles tagged at
Kiholo Bay, Hawaii, 13-15 May 1973

SOUTHWEST FISHERIES CI
HONOLULU LABORATOR
2570 DOLE STREET
HONOLULU HI 96822-23

George H. Balazs

Monel size 49 tag No.	Straight carapace length (cm)	Date, time, and remarks
602	52.4	5/13 p.m. - 5/14 a.m.
603	41.9	5/13 p.m. - 5/14 a.m.
604	45.7	5/13 p.m. - 5/14 a.m.
605	66.0	5/13 p.m. - 5/14 a.m.
607	47.6	5/14, 1400 h
608	49.7	5/14, 1400 h
609	37.3	5/14, 1900 h green alga on shell
610	42.9	5/14, 1900 h light brown shell
611	41.3	5/14, 1900 h blind on left eye
612	47.6	5/14 p.m.-5/15 a.m.
614	63.2	5/14 p.m.-5/15 a.m.
615	50.5	5/14 p.m.-5/15 a.m.
616	64.1	5/14 p.m.-5/15 a.m.
617	44.6	5/14 p.m.-5/15 a.m.
618	43.5	5/14 p.m.-5/15 a.m.

Size range - 37.3-66.0 cm

Salinity readings near net (low tide)

Surface = 7 ppt
8-ft depth = 28 ppt

Green Turtles

3 days/2 nights Study dates	Total no. captured	No. newly tagged	No. tag resightings	Total no. tagged in population to date	Petersen population index estimate
Oct. 87 #1 <u>HPA</u>	6	6	-	6	-
Feb. 88 #2	13	13	0	19	-
April 88 #3	10	9	1	28	190
June 88 #4	11	4	7	32	44
Oct. 88 #5	21	15	6	46*	112
March 89 #6	29	24	5	70	266
May 89 #7	37	17	20	87	130

* Total number of tagged turtles reduced by one as of 8/19/88 when an individual tagged in 6/88 was found dead from gillnet entanglement.

39 subtotal

18-20 Oct 89* #8	24	6	18	93	116
24-26 JAN 90* #9	22	9	13	102	157
25-27 APRIL 90** #10	58	21	37	123	188
24-26 Oct 90 #11	51	18	33	141	190

* ALSO 1 JUVENILE HAWKS BILL HAND-CAPTURED (SAME)

AS OF 5/89 = 126 captures
 AS OF 1/90 = 172 captures (+ hawksbills)

$$\frac{\text{No. marked Recaptured}}{\text{Total captured}} = \frac{\text{Total Marked Released into area}}{\text{Total turtle population in the area}}$$

