

Kaloko, Keawano'i

BALAZS

SEA  
TURTLE  
CAM

5 meters  
3 meters from  
KALOKO WAIKOLOA

LOGGER

141072 6-9-00

181186 6-9-00

PUAKO KIHLOLO - 261374 - SLUICE 6-9-00

KEAWA NUI  
MAUNA LANI - 29551 - Pond 2 6-9-00

KALOKO WAIKOLOA 1999-2001

PUAKO 2 MAY 2000 KIHLOLO 9 JUNE 00

6 JULY 2000 KIHLOLO KEAWA NUI Loggers p.101  
P.39 26 JUNE 00 P.111

Rearing Spring

30 AUGUST 00 MAUNA LANI 1 JULY 00 P.137  
KEAWA NUI 2 fish pond turtles - P.38

Compositions ML 4 JULY 2000

Name GEORGE BALAZS

808-983-5733  
808-395-6409

KIHLOLO TDR 24 OCT. 2001 PAGE 162 & 161  
9 3/4 in. x 7 1/2 in. 100 Leaves

Roaring Spring, PA 16673

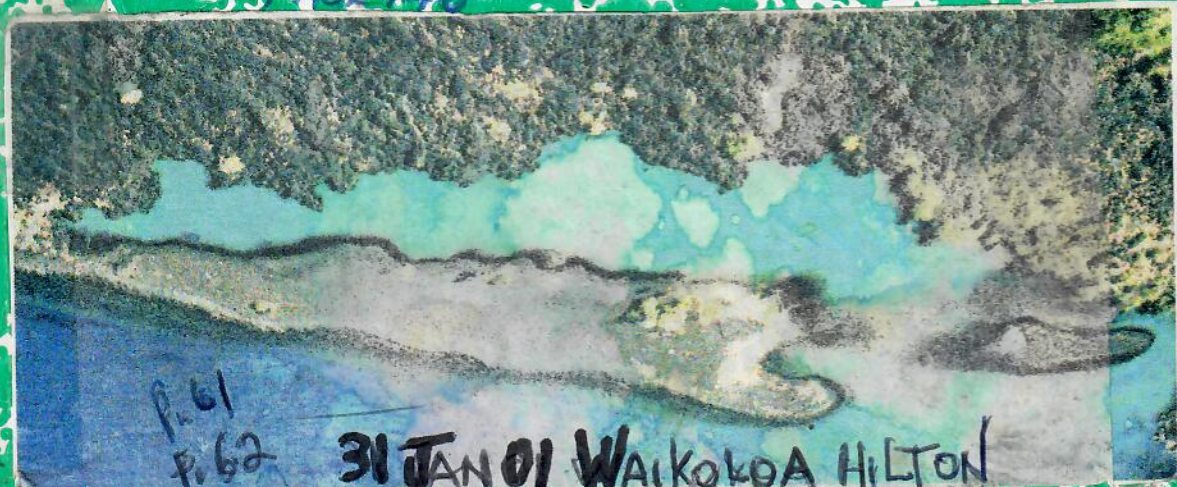
KALOKO 8 APRIL 2000



SeaTurtleCam 7-9 APRIL 2000 - KIHLOLO

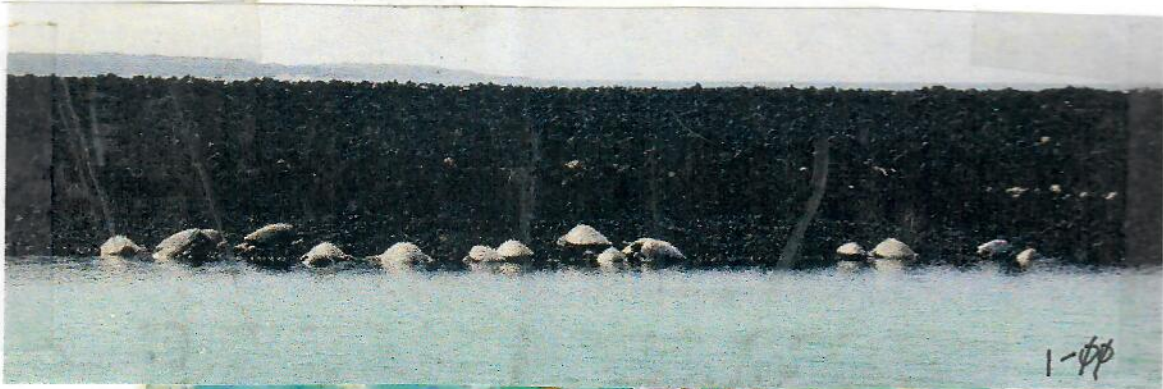
SeaTurtleCam 13 OCTOBER 2000 KIHLOLO  
PAGE 140

Marine Turtle Research  
NMFS HONOLULU LAB  
2570 Dole Street  
Honolulu, HI 96822-2396



P.61  
P.62

31 JAN 01 WAIKOKOA HILTON



1-pp

SCH

TIMI



THURSDAY

SU

RO

INS

FRIDAY

SU

RO

INS

SATURDAY

SUBJECT

ROOM

INSTRUCTOR



PERIOD 8

ID 11-30-00 Puako Q420 Necropsy p. 152

USE  
Decaps

22 Dec. 99

Rice students p. 78

Loggers  
P. 101

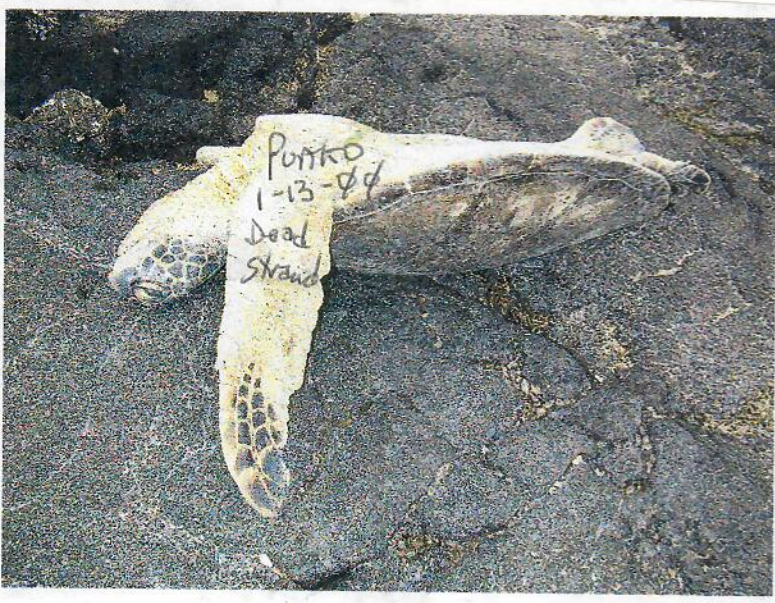
P. 170-177

29 DEC. 99

Rice et al.  
Kiholo p. 80  
3 captures

TABLE  
OF  
CONTENTS  
CONTINUED  
P. 168  
168

- See outside back cover -



MARC Arc  
9-23-00  
DATA  
PAGES  
Kiholo  
NIGHTWORK  
DATA pages =  
P. 37, 57, 69,  
70, 71,

15-16 JAN. 00 p. 88 Marc et al.

MARC-students Kiholo 8 captures

31 JAN 00 Kiholo = MARC-students 8 captures, 2 new PAGE

25 JAN 00 p. 93

Kiholo 2 captures

MARC-students

4-5 Feb 00 Daniel Zatz, Denny, Marc, MP  
to Honaunui, Kiholo, IHA  
See Move Wildlife Inc. 2 Loggers +  
New MKZ to MARC

15 February 00 Marc & students only - 1 capture  
PAGE Kiholo BASKING page

16 FEB. 00 KONA - Vette Anderson LENA MQ P. 100  
ALGAE SAMPLED KAWAIIAE, PUAKO, KIHOLO and HONOKONA

2

# Royal Kona Resort

The Essence of Kailua-Kona

Martin G. Hudon  
Director of Security & Safety

800/919-8333 • 808/329-3111 • FAX 808/329-7138  
75-5852 ALII DRIVE • KAILUA-KONA, HAWAII 96740  
Internet: www.royalkona.com

## SEE MORE WILDLIFE SYSTEMS



BILL HAGEY

858.459.8554 office • 858.395.8146 mobile  
6621 AVENIDA MIROLA  
LA JOLLA, CA 92037  
billh@seemorewildlife.com

www.seemorewildlife.com

858-530-2221  
FAX-7003  
~6-2-00  
Contract box under solar panels  
flooded from hightide.

9 JUNE 00

Friday

KIHOLE

DATA pages - 15-25

(NARRATIVE p. 12  
- Graspid crabs  
- MARK Hodges)

w/T.W., Leftco Summer Student's Marc, Laura Rice

22 captures - 11 scooped (1 new, 10 Recap)

only 1 ID  
25/Basket  
17 Big

Took out 3 loggers 11 basking (2 new, 9 Recap)

1) stone 2) far end pond 1  
3) pond 2

~ 1pm - 3:30pm  
 16 MARCH 2000 KITTOLO BAY Hike in Trail  
 Thursday with Osha Davidson and Daughter Sea'ana.  
 See page 107

Friday Sunday Page 114 -  
 7-9 APRIL 2000 KITTOLO BAY  
 Installation of world's first Sea Turtle Cam  
 of wild sea turtles  
 Daniel Zatz, Marc Rice, GHB, Bill HAGEY + 2 (wife of bill & friend of Daniel)

SATURDAY Algoe LIST OF PARTICIPANTS = 76-77  
 8 APRIL 2000 KALOK'O (central area)

Mouth  
 Samples  
 p. 113

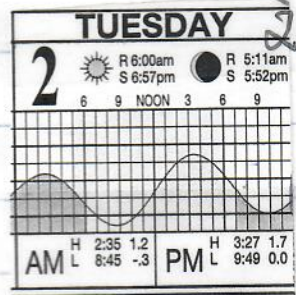
Marc Rice, Sandy Watson, GB, Stan Bond + Boy Scouts  
 DATA = page 4-7  
 N = 7 captures (5 scoop net, 2 BASK (one a flipper tag recovery) ON OFFSHORE ROCKS)

2 MAY 2000 Tuesday  
 DATA PAGES = 8-14  
 NARRATIVE See p. 119  
 Need length wt  
 size classes compared to 4/98 PUAKO.

students

Veronica Morriss  
 Garry Burns  
 Katie Harrington  
 Dan Walker  
 Jill Quaintance

PUAKO



+ Sandi & George WATSON  
 MARC Rice, T. Work - Blood for EVALUATION

PUAKO - SCUBA

2 SCUBA'S - 13 dwe 1, 1 dwe 2 =  
 14 TOTAL (6 Recs)

T.O.C. See  
 p. 168

START

CAPTURE DATE, LOCATION AND METHOD:

4-8-08 Koloko Scoopnet  
PERSON RECORDING DATA: Zbaca Graduate SHPA

OLD TAGS: \_\_\_\_\_

NEW TAGS: LH 410B6E6316  
RH 410B02410C  
OTHER NEW TAGS: \_\_\_\_\_

TUMOR SCORE: 0

STRAIGHT CARAPACE-LENGTH: 54.9 WIDTH: 41.3

NOTCH LENGTH: 54.6 DB: L.O. VB: L.O.

CURVED CARAPACE LENGTH: 58.5 WIDTH: 49

HEAD WIDTH: 8.6

SEX: MALE, FEMALE OR UNDETERMINED

PPS: YES OR NO OR NE Yes

TAIL LENGTH: T 11.6 C 8

RIGHT FRONT FLIPPER WIDTH: 9.3 SAMPLES COLLECTED

PLASTRON LENGTH: 35.1

WEIGHT: 44 lb. Blood 10% formalin

DESCRIPTIVE REMARKS: Mouth sample 10% formalin

10% formalin  
Mouth sample  
white line  
2nd lateral  
left and right

CAPTURE DATE, LOCATION AND METHOD:

4-8-08 Koloko Scoopnet  
PERSON RECORDING DATA: Reberca

OLD TAGS: \_\_\_\_\_

NEW TAGS: LH 410B653101  
RH 410C18395D  
OTHER NEW TAGS: \_\_\_\_\_

TUMOR SCORE: 0

STRAIGHT CARAPACE-LENGTH: 43.1 WIDTH: 34.9

NOTCH LENGTH: 42.5 DB: L.O. VB: L.O.

CURVED CARAPACE LENGTH: 46.9 WIDTH: 41.0

HEAD WIDTH: 6.9

SEX: MALE, FEMALE OR UNDETERMINED

PPS: YES OR NO OR NE Yes

TAIL LENGTH: T 10 C 7.5

RIGHT FRONT FLIPPER WIDTH: 7.6 SAMPLES COLLECTED

PLASTRON LENGTH: 34.3

WEIGHT: 27 lb. Blood 10% formalin

DESCRIPTIVE REMARKS:

10 centrals  
white line and lateral left and right

24

CAPTURE DATE, LOCATION AND METHOD:

4-8-00 Kaloiko Scoopnet

PERSON RECORDING DATA: Rebecca Goodman

OLD TAGS:

Empty boxes for old tags

NEW TAGS:



411936385C

TUMOR SCORE

0

OTHER NEW TAGS:

HT

41192F4105

STRAIGHT CARAPACE-LENGTH:

68.5

WIDTH:

52.3

NOTCH LENGTH:

68.5

DB:

L.O.

VB:

L.C.

CURVED CARAPACE LENGTH:

71.5

WIDTH:

66

HEAD WIDTH:

10.5

SEX:

MALE, FEMALE OR UNDETERMINED

PPS: YES OR NO OR NE

yes

TAIL LENGTH:

15.5

C

RIGHT FRONT FLIPPER WIDTH:

11.2

SAMPLES COLLECTED:

PLASTRON LENGTH:

53.9

WEIGHT:

95

DESCRIPTIVE REMARKS:

blood spots

noted  
white line and lateral left and right  
suspectious pump left eye lid dorsal  
mouth sample obtained

CAPTURE DATE, LOCATION AND METHOD:

4-8-00 Kaloiko Scoopnet

PERSON RECORDING DATA: Jill

OLD TAGS:

Empty boxes for old tags

NEW TAGS:



410C0C3D27

TUMOR SCORE

0

OTHER NEW TAGS:

HT

410B4D2228

STRAIGHT CARAPACE-LENGTH:

52.8

WIDTH:

40.1

NOTCH LENGTH:

52.1

DB:

L.O.

VB:

L.C.

CURVED CARAPACE LENGTH:

57.5

WIDTH:

49.0

HEAD WIDTH:

8.3

SEX:

MALE, FEMALE OR UNDETERMINED

PPS: YES OR NO OR NE

yes

TAIL LENGTH:

11.5

C

RIGHT FRONT FLIPPER WIDTH:

8.8

SAMPLES COLLECTED:

PLASTRON LENGTH:

42.0

WEIGHT:

42

DESCRIPTIVE REMARKS:

blood spots

noted

white line and lateral left and right

CAPTURE DATE, LOCATION AND METHOD:

4-8-00 Basking

PERSON RECORDING DATA: Ric

OLD TAGS:

J487  
J486  
J489  
J488

TUMOR SCORE

0

NEW TAGS: RPT

410B503B10

LH

OTHER NEW TAGS: LH

410B0B1766

STRAIGHT CARAPACE-LENGTH: 68.3

WIDTH: 59.5

NOTCH LENGTH: 62.9

DB:

L.O.

VB:

L.C.

CURVED CARAPACE LENGTH: 74

WIDTH: 64

HEAD WIDTH: 10.2

SEX: MALE, FEMALE OR UNDETERMINED

PPS: YES OR NO OR NE yes

TAIL LENGTH: T 14

C

10.5

RIGHT FRONT FLIPPER WIDTH: 11.3

SAMPLES COLLECTED

PLASTRON LENGTH: 87

53.8

WEIGHT:

87

DESCRIPTIVE REMARKS:

blood spot spots

notetooled

white line 2nd lateral left and right

CAPTURE DATE, LOCATION AND METHOD:

4-8-00 Basking

PERSON RECORDING DATA: Jill

OLD TAGS:

[Empty boxes for old tags]

TUMOR SCORE

0

NEW TAGS: LH

410B212508

OTHER NEW TAGS: RH

410B4B3413

STRAIGHT CARAPACE-LENGTH: 54.9

WIDTH: 42.5

NOTCH LENGTH: 54.4

DB:

L.O.

VB:

L.C.

CURVED CARAPACE LENGTH: 60.0

WIDTH: 51

HEAD WIDTH: 8.7

SEX: MALE, FEMALE OR UNDETERMINED

PPS: YES OR NO OR NE yes

TAIL LENGTH: T 11.5

C

8

RIGHT FRONT FLIPPER WIDTH: 9.1

SAMPLES COLLECTED

PLASTRON LENGTH: 43.2

WEIGHT:

44 lbs

blood spot spots

DESCRIPTIVE REMARKS:

notetooled

white line 2nd lateral

front large scales on trailing edge of flipper are "puffy" - lifted up in center.





CAPTURE DATE, LOCATION AND METHOD:

① 5-2-06 PUAKO HAND SCUBA

PERSON RECORDING DATA: Dan Walker

OLD TAGS:

K383  
K382  
N602  
L35 w/ blue plastic

NEW TAGS: RFL

TUMOR SCORE

0

LFL

OTHER NEW TAGS

500F256758

IFZA59672C

STRAIGHT CARAPACE-LENGTH:

57.0

WIDTH:

43.7

NOTCH LENGTH:

56.5

DB:

L.O.

VB:

L.C.

CURVED CARAPACE LENGTH:

61.5

WIDTH:

51.5

HEAD WIDTH:

SEX: MALE, FEMALE OR UNDETERMINED

Yes

TAIL LENGTH: T

C

RIGHT FRONT FLIPPER WIDTH:

SAMPLES COLLECTED:

PLASTRON LENGTH:

46.5

SAMPLES COLLECTED:

WEIGHT:

58

SAMPLES COLLECTED:

DESCRIPTIVE REMARKS:

Blood by T.W. + Blood dot spot

~~IRS~~ 1RS healed slit  
4-5<sup>th</sup> Marginal ~~left~~ healed indentation

CAPTURE DATE, LOCATION AND METHOD:

② 5-2-06 Puako

PERSON RECORDING DATA: Dan Walker

Hand SCUBA

OLD TAGS:

407D33825

NEW TAGS: RFL

TUMOR SCORE

0

LFL

OTHER NEW TAGS:

502E4C084B LH

STRAIGHT CARAPACE-LENGTH:

56.9

WIDTH:

44.4

NOTCH LENGTH:

56.9

DB:

L.O.

VB:

L.C.

CURVED CARAPACE LENGTH:

61

WIDTH:

52.5

HEAD WIDTH:

SEX: MALE, FEMALE OR UNDETERMINED

PPS: YES OR NO OR NE

Yes

TAIL LENGTH: T

C

RIGHT FRONT FLIPPER WIDTH:

SAMPLES COLLECTED:

PLASTRON LENGTH:

46.3

SAMPLES COLLECTED:

WEIGHT:

52

SAMPLES COLLECTED:

DESCRIPTIVE REMARKS:

Blood by T.W. + Blood dot spot

CAPTURE DATE, LOCATION AND METHOD:

③ 5-2-06 Puako

PERSON RECORDING DATA: Dan Walker

Hand  
Seuba

OLD TAGS:

NEW TAGS: R/L  
L/R

NE

500E0B0905 RH

TUMOR SCORE

0

OT

501F103851 LH

NEW TAGS:

STRAIGHT CARAPACE-LENGTH: 43.1

WIDTH: 34.2

NOTCH LENGTH: 42.8

DB:

L.O.

VB:

L.C.

CURVED CARAPACE LENGTH: 46

WIDTH: 39.5

HEAD WIDTH: 7.3

SEX: MALE, FEMALE OR UNDETERMINED

PPS: YES OR NO OR NE Yes

TAIL LENGTH: T

C

RIGHT FRONT FLIPPER WIDTH:

SAMPLES COLLECTED:

PLASTRON LENGTH: 34.4

Blood by T.W.

WEIGHT: 23

Blood spot

+ Blood spot

DESCRIPTIVE REMARKS:

Balans - forgot LIC

~~Hand~~

CAPTURE DATE, LOCATION AND METHOD:

④ 5-2-06 Puako

PERSON RECORDING DATA: Dan Walker

Hand  
Seuba

OLD TAGS:

NEW TAGS: R/L  
L/R

NEW TAGS: R/L  
L/R

4500E06656C

TUMOR SCORE

0

OTHER NEW TAGS:

RH 5019532347

STRAIGHT CARAPACE-LENGTH: 56.2

WIDTH: 42.9

NOTCH LENGTH: 55.4

DB:

L.O.

VB:

L.C.

CURVED CARAPACE LENGTH: 60

WIDTH: 50.5

HEAD WIDTH: 48.9

SEX: MALE, FEMALE OR UNDETERMINED

PPS: YES OR NO OR NE Yes

TAIL LENGTH: T

C

RIGHT FRONT FLIPPER WIDTH:

SAMPLES COLLECTED:

PLASTRON LENGTH: 44.4

Blood by T.W.

WEIGHT: 44 lbs

Blood spot

+ Blood spot

DESCRIPTIVE REMARKS:

mild imaciation  
soft center cara.  
sunny back

3.0 11g

9

CAPTURE DATE, LOCATION AND METHOD:

③ 5-2-00 Puako / Hand SCUBA  
PERSON RECORDING DATA: Jill Quaintance *new*

OLD TAGS: 11023 NEW TAGS: RFL LF 502E62751B



TUMOR SCORE: 0  
OTHER NEW TAGS: RFL 11021  
RFL 7F7D23106  
RFL B37  
RFL R921

STRAIGHT CARAPACE-LENGTH: 47.0 WIDTH: 38.6  
NOTCH LENGTH: 9.1 DB: 7.7 L.O. VB: L.C.  
CURVED CARAPACE LENGTH: 52 WIDTH: 40.5

HEAD WIDTH: [ ] SEX: MALE, FEMALE OR UNDETERMINED

PPS: YES OR NO OR NE [ ]

TAIL LENGTH: T [ ] C [ ]

RIGHT FRONT FLIPPER WIDTH: [ ] SAMPLES COLLECTED: [ ]

PLASTRON LENGTH: 39.1 [ ]

WEIGHT: 35 [ ]

DESCRIPTIVE REMARKS: 8 centals blood spot

CAPTURE DATE, LOCATION AND METHOD:

⑥ 5-2-00 Puako / Hand SCUBA  
PERSON RECORDING DATA: Jill Quaintance *new*

OLD TAGS: 8-128 NEW TAGS: RFL LF 500E4C162E



TUMOR SCORE: 0  
OTHER NEW TAGS: RFL 8-128  
RFL 7D 609E  
RFL 1F274A4828

STRAIGHT CARAPACE-LENGTH: 50.8 WIDTH: 38.7  
NOTCH LENGTH: 5.6 DB: [ ] L.O. VB: L.C.  
CURVED CARAPACE LENGTH: 54.5 WIDTH: 46

HEAD WIDTH: [ ] SEX: MALE, FEMALE OR UNDETERMINED

PPS: YES OR NO OR NE [ ]

TAIL LENGTH: T [ ] C [ ]

RIGHT FRONT FLIPPER WIDTH: [ ] SAMPLES COLLECTED: [ ]

PLASTRON LENGTH: 40.5 [ ]

WEIGHT: 40 [ ]

DESCRIPTIVE REMARKS: Healed split in Ray loss on 5th 3 flippers

CAPTURE DATE, LOCATION AND METHOD:

5-2-08 Puako / Hand scuba

PERSON RECORDING DATA: Jill Quaintance <sup>new</sup> 5019241745

OLD TAGS: 407001438 NEW TAGS: RFL LFL

TUMOR SCORE: 0 OTHER NEW TAGS:

STRAIGHT CARAPACE-LENGTH: 51.2 WIDTH: 40.4

NOTCH LENGTH: 51.1 DB: L.O. VB: L.C.

CURVED CARAPACE LENGTH: 55 WIDTH: 48.5

HEAD WIDTH: SEX: MALE, FEMALE OR UNDETERMINED

PPS: YES OR NO OR NE yes

TAIL LENGTH: T C

RIGHT FRONT FLIPPER WIDTH: SAMPLES COLLECTED:

PLASTRON LENGTH: 40.2

WEIGHT: 42

DESCRIPTIVE REMARKS: Blood by T.W.  
Blood spot  
+ Blood

CAPTURE DATE, LOCATION AND METHOD:

5-2-08 Puako / Hand scuba

PERSON RECORDING DATA: Jill Quaintance

NEW TAGS: RFL RF500F1A083A LFL

TUMOR SCORE: 0 OTHER NEW TAGS: RF5019276E57

STRAIGHT CARAPACE-LENGTH: 57.7 WIDTH: 43.6

NOTCH LENGTH: 57.2 DB: L.O. VB: L.C.

CURVED CARAPACE LENGTH: 52.02 WIDTH: 53.5

HEAD WIDTH: SEX: MALE, FEMALE OR UNDETERMINED

PPS: YES OR NO OR NE yes

TAIL LENGTH: T C

RIGHT FRONT FLIPPER WIDTH: SAMPLES COLLECTED:

PLASTRON LENGTH: 45.4

WEIGHT: 54

DESCRIPTIVE REMARKS: Blood spot  
+ Blood  
30 Lig

50% R or Cava

(11)

(9)

CAPTURE DATE, LOCATION AND METHOD:

5-2-88 Puako (Hard SUBA)

PERSON RECORDING DATA: Jill Quaintance

NEW TAGS: RFL R#502E484775



LFL

OTHER NEW TAGS: LH#500E481535



OLD TAGS:

TUMOR SCORE

0

STRAIGHT CARAPACE-LENGTH: 44.1

WIDTH: 35.1

NOTCH LENGTH: 44.8

L.O.

DB:

VB:

L.C.

CURVED CARAPACE LENGTH: 47.5

WIDTH: 41.8

HEAD WIDTH:

SEX: MALE, FEMALE OR UNDETERMINED

PPS: YES OR NO OR NE yes

TAIL LENGTH: T

C

RIGHT FRONT FLIPPER WIDTH:

SAMPLES COLLECTED:

PLASTRON LENGTH: 34.3

blood by

WEIGHT: 27

blood POT + blood POT

DESCRIPTIVE REMARKS:

"slightly chunky" 1.0 lig  
Body

(10)

CAPTURE DATE, LOCATION AND METHOD:

Puako 2-8-88 (Hard SUBA)

PERSON RECORDING DATA: Jill Quaintance

NEW TAGS: RFL R#500E137819



LFL

OTHER NEW TAGS: LH#502E213C15



LD TAGS:

TUMOR SCORE

0

STRAIGHT CARAPACE-LENGTH: 42.1

WIDTH: 35.1

NOTCH LENGTH: 40.4

L.O.

DB:

VB:

L.C.

CURVED CARAPACE LENGTH: 44.5

WIDTH: 35.1

HEAD WIDTH:

SEX: MALE, FEMALE OR UNDETERMINED

PPS: YES OR NO OR NE NO

TAIL LENGTH: T

C

RIGHT FRONT FLIPPER WIDTH:

SAMPLES COLLECTED:

PLASTRON LENGTH: 33.5

blood by +

WEIGHT: 24

blood POT spot

DESCRIPTIVE REMARKS:

blood 1.0 lig

5-6 magnum rd  
winked indentation

(11)

CAPTURE DATE, LOCATION AND METHOD:

52-00 Puako / Hand SUBA

PERSON RECORDING DATA: Jill Quaintance

OLD TAGS:

TUMOR SCORE

NEW TAGS: REF 500E153279 (new)



500F207ESB RH



NEW TAGS: RFL 500E492823 (new)



wouldn't often wipead insertion

STRAIGHT CARAPACE-LENGTH: 45.6

WIDTH: 34.5

NOTCH LENGTH: 45.4

L.O.

L.C

CURVED CARAPACE LENGTH: 48

WIDTH: 48.45

HEAD WIDTH:

SEX: MALE, FEMALE OR UNDETERMINED

PPS: YES OR NO OR NE

yes

TAIL LENGTH: T

C

RIGHT FRONT FLIPPER WIDTH:

SAMPLES COLLECTED:

PLASTRON LENGTH: 30.7

WEIGHT: 28

DESCRIPTIVE REMARKS:

Blood taken by T.W. + Blood spot  
LQ = 1.7ml

(12)

CAPTURE DATE, LOCATION AND METHOD:

52-00 Puako / Hand SUBA

PERSON RECORDING DATA: Jill Quaintance

OLD TAGS:

TUMOR SCORE

NEW TAGS: RFL B145



R146



1F27203258

NEW TAGS: REF



502E5C113C

OTHER NEW TAGS:

STRAIGHT CARAPACE-LENGTH: 51.9

WIDTH: 40.5

NOTCH LENGTH: 51.9

DB:

L.O.

VB: L.C

CURVED CARAPACE LENGTH: 55.5

WIDTH: 48.5

HEAD WIDTH:

SEX: MALE, FEMALE OR UNDETERMINED

PPS: YES OR NO OR NE

yes

TAIL LENGTH: T

C

RIGHT FRONT FLIPPER WIDTH:

SAMPLES COLLECTED:

PLASTRON LENGTH: 41.3

WEIGHT: 45

DESCRIPTIVE REMARKS:

Blood T.W. by T.W. + Blood spot

Can't find this turtle (on 4/10 list)

(13)

(13)

END  
DIVE  
ave

CAPTURE DATE, LOCATION AND METHOD:

5/2/00 hand scrub/Plako

PERSON RECORDING DATA: Rice

OLD TAGS:

NEW TAGS: [ ] [ ] [ ]

NEW TAG: 500F215A56



OTHER NEW TAGS: LH

500F1A6A74



RH

TUMOR SCORE: 0

STRAIGHT CARAPACE-LENGTH: 57.2

WIDTH: 43.8

NOTCH LENGTH: 57.0

L.O.

VB: L.C

CURVED CARAPACE LENGTH: 61.5

WIDTH: 53.0

HEAD WIDTH: [ ]

SEX: MALE, FEMALE OR UNDETERMINED

PPS: YES OR NO OR NE 100

TAIL LENGTH: T [ ]

C

RIGHT FRONT FLIPPER WIDTH: [ ]

SAMPLES COLLECTED: [ ]

PLASTRON LENGTH: 44.9

WEIGHT: 54

DESCRIPTIVE REMARKS:

493.0  
Blood taken by T.W. [unclear] + 580T  
Blood + 580T

(14)

END  
DIVE #2  
5/2/00

CAPTURE DATE, LOCATION AND METHOD:

5/2/00 Plako Hand Scrub

PERSON RECORDING DATA: GHB

OLD TAGS:

NEW TAGS: [ ] [ ] [ ]

NEW TAG: 500E056105



OTHER NEW TAGS: RH

500F214C06

TUMOR SCORE: 0

59.0

STRAIGHT CARAPACE-LENGTH: 59.0

WIDTH: 45.4

NOTCH LENGTH: 58.9

L.O.

VB: L.C

CURVED CARAPACE LENGTH: 63

WIDTH: 54

HEAD WIDTH: 9.0

SEX: MALE, FEMALE OR UNDETERMINED

PPS: YES OR NO OR NE Y

TAIL LENGTH: T 13.5

C

RIGHT FRONT FLIPPER WIDTH: [ ]

SAMPLES COLLECTED: [ ]

PLASTRON LENGTH: 45.6

1 by TW

WEIGHT: 56

blood + blood

DESCRIPTIVE REMARKS:

3.0 by



6-9-00 KIHOLO

BAV

2

CAPTURE DATE, LOCATION AND METHOD:

6/9/00 Kiholo scoop net  
PERSON RECORDING DATA: Brek.

OLD TAGS: 4136006949  
TUMOR SCORE: 40615A166B  
NEW TAGS: RFL  
LFL  
OTHER NEW TAGS:

STRAIGHT CARAPACE-LENGTH: 41.3 WIDTH: 34.1  
NOTCH LENGTH: 40.9 DB: L.O. VB: L.C.  
CURVED CARAPACE LENGTH: 44.5 WIDTH: 40.5

HEAD WIDTH: SEX: MALE, FEMALE OR UNDETERMINED  
PPS: YES OR NO OR NE yes  
TAIL LENGTH: T C

RIGHT FRONT FLIPPER WIDTH: SAMPLES COLLECTED  
PLASTRON LENGTH: 34.4  
WEIGHT: 24 lbs. Blood & Twpot-spot

DESCRIPTIVE REMARKS: ex 1st carapace molt to #5 repainted

CAPTURE DATE, LOCATION AND METHOD:

6/9/00 Kiholo scoop net  
PERSON RECORDING DATA: Brek.

OLD TAGS:  
TUMOR SCORE: 0  
NEW TAGS:  
OTHER NEW TAGS:

STRAIGHT CARAPACE-LENGTH: 39.4 WIDTH: 32.3  
NOTCH LENGTH: 39.1 DB: L.O. VB: L.C.  
CURVED CARAPACE LENGTH: 42.5 WIDTH: 39.0

HEAD WIDTH: SEX: MALE, FEMALE OR UNDETERMINED  
PPS: YES OR NO OR NE yes  
TAIL LENGTH: T C

RIGHT FRONT FLIPPER WIDTH: SAMPLES COLLECTED  
PLASTRON LENGTH: 31.9  
WEIGHT: 18 lbs. new

DESCRIPTIVE REMARKS: carapace molt to #7  
3 lat L & R new mt

Black Def. Head  
0.5 LTA

12

CAPTURE DATE, LOCATION AND METHOD:

6/9/00

KI Hole bay scoop net  
PERSON RECORDING DATA: Jacques Melcher

OLD TAGS:

K450  
K451  
41351A1652  
1F44222844

NEW TAGS: RFL  
LFL

TUMOR SCORE

0

OTHER NEW TAGS:

STRAIGHT CARAPACE-LENGTH: 56.6

WIDTH: 45.9

NOTCH LENGTH: 56.0

L.O.

DB:

VB:

L.C.

CURVED CARAPACE LENGTH: 61.0

WIDTH: 55.5

HEAD WIDTH:

SEX: MALE, FEMALE OR UNDETERMINED

PPS: YES OR NO OR NE

TAIL LENGTH: T

C

RIGHT FRONT FLIPPER WIDTH:

SAMPLES COLLECTED:

PLASTRON LENGTH: 45.3

WEIGHT: 54 lbs

DESCRIPTIVE REMARKS:

Blood 1/2 to 10+ spot  
Carapace ~~add~~ + tail #36  
MOB

old m T 36  
Repaired  
Repaired

13

CAPTURE DATE, LOCATION AND METHOD:

6-9-00

KI Hole bay scoop net  
PERSON RECORDING DATA: Jacques Melcher

OLD TAGS:

J1021  
J1020  
J622  
413003750  
411FZ1003A

NEW TAGS: RFL  
LFL

TUMOR SCORE

0

OTHER NEW TAGS:

STRAIGHT CARAPACE-LENGTH: 44.9

WIDTH: 36.3

NOTCH LENGTH: 44.5

DB:

L.O.

VB:

L.C.

CURVED CARAPACE LENGTH: 48

WIDTH: 41.5

HEAD WIDTH:

SEX: MALE, FEMALE OR UNDETERMINED

PPS: YES OR NO OR NE

4/0

TAIL LENGTH: T

C

RIGHT FRONT FLIPPER WIDTH:

SAMPLES COLLECTED:

PLASTRON LENGTH: 36.9

1.OUTH

WEIGHT: 25.155

DESCRIPTIVE REMARKS:

New Blood 1/2 to 10+ spot  
Carapace ~~add~~ + tail #72

3rd lat  
LAR

CAPTURE DATE, LOCATION AND METHOD:

6-9-00

PERSON RECORDING DATA: Kiholo scarp net  
Jaqueline Melcher

OLD TAGS:

H516

NEW TAGS: RFL

TUMOR SCORE

0

N521

LFL

N522

OTHER NEW TAGS:

4077361718

7F7D096341

STRAIGHT CARAPACE-LENGTH: 54.0

WIDTH: 40.8

NOTCH LENGTH: 53.9

DB:

L.O.

VB:

L.C.

CURVED CARAPACE LENGTH: 58.5

WIDTH: 48

HEAD WIDTH:

PPS: YES OR NO OR NE

yes

TAIL LENGTH: T

C

RIGHT FRONT FLIPPER WIDTH:

PLASTRON LENGTH: 44.7

WEIGHT: 44.105

DESCRIPTIVE REMARKS:

New MT 73

3rd lot L&R

Blood for Twdot-spot

CAPTURE DATE, LOCATION AND METHOD:

6-9-00

PERSON RECORDING DATA: Kiholo scarp net  
Jaqueline Melcher

OLD TAGS:

N526

NEW TAGS:

TUMOR SCORE

0

N526

OTHER NEW TAGS:

54.9

STRAIGHT CARAPACE-LENGTH: 54.7

WIDTH: 42.3

NOTCH LENGTH: 54.7

DB:

L.O.

VB:

L.C.

CURVED CARAPACE LENGTH: 58.9

WIDTH: 50.1

HEAD WIDTH:

PPS: YES OR NO OR NE

yes

TAIL LENGTH: T

C

RIGHT FRONT FLIPPER WIDTH:

PLASTRON LENGTH: 43.9

WEIGHT: 49.165

DESCRIPTIVE REMARKS:

New MT-74

LFL = Healed notch 3rd lot L&R

Blood for Twdot-spot

months + samples

2.3 LIQ

18

CAPTURE DATE, LOCATION AND METHOD:

0-29-00

Person Recording Data: Kihole bay, deep net, Sargassum, Melchior

OLD TAGS: 0723

NEW TAGS: RFL, LFL

TUMOR SCORE: 0

OTHER NEW TAGS: 410416031E, 4104084510

STRAIGHT CARAPACE-LENGTH: [ ]

WIDTH: [ ]

NOTCH LENGTH: [ ]

DB: [ ]

L.O.: [ ]

VB: [ ]

L.C.: [ ]

CURVED CARAPACE LENGTH: [ ]

WIDTH: [ ]

HEAD WIDTH: [ ]

SEX: MALE, FEMALE OR UNDETERMINED

PPS: YES OR NO OR NE NO

TAIL LENGTH: T [ ]

C [ ]

RIGHT FRONT FLIPPER WIDTH: [ ]

SAMPLES COLLECTED: [ ]

PLASTRON LENGTH: 34.5

80 T

WEIGHT: 21.65

Blood 4-70 det. spot, mt 40

DESCRIPTIVE REMARKS: Repair

CAPTURE DATE, LOCATION AND METHOD:

6-29-00

Person Recording Data: Kihole bay, deep net, Sargassum, Melchior

OLD TAGS: B2160

NEW TAGS: LH 413568197F

TUMOR SCORE: 0

OTHER NEW TAGS: 4139, 4138

STRAIGHT CARAPACE-LENGTH: 55.5

WIDTH: 43.9

NOTCH LENGTH: 55.7

DB: [ ]

L.O.: [ ]

VB: [ ]

L.C.: [ ]

CURVED CARAPACE LENGTH: 60

WIDTH: 53

HEAD WIDTH: [ ]

SEX: MALE, FEMALE OR UNDETERMINED

PPS: YES OR NO OR NE yes

TAIL LENGTH: T [ ]

C [ ]

RIGHT FRONT FLIPPER WIDTH: [ ]

SAMPLES COLLECTED: mouth

PLASTRON LENGTH: 44.2

80 T

WEIGHT: 59.165

Blood 4-70 det. spot, New mt 75, 3rd lat L&R

DESCRIPTIVE REMARKS: 3.0 LIG

9

CAPTURE DATE, LOCATION AND METHOD:

6-9-88

kindle scoop net  
PERSON RECORDING DATA: Jacques Melcher

OLD TAGS: ~~B257~~ 256  
LFL

NEW TAGS: RFL  
LFL

TUMOR SCORE: 0  
OTHER NEW TAGS: 1P10AIF1345  
4289  
413E167C03

STRAIGHT CARAPACE-LENGTH: 53.4  
WIDTH: 46.4

NOTCH LENGTH: 53.2  
DB: L.O. VB: L.C.

CURVED CARAPACE LENGTH: 57  
WIDTH: 50

HEAD WIDTH:

SEX: MALE, FEMALE OR UNDETERMINED

PPS: YES OR NO OR NE

TAIL LENGTH: T  C

RIGHT FRONT FLIPPER WIDTH:

SAMPLES COLLECTED:

PLASTRON LENGTH: 42.5

WEIGHT: 41.6 lbs  
Bleed for tub dot - spot  
MT 23 Reprint

DESCRIPTIVE REMARKS:

10

CAPTURE DATE, LOCATION AND METHOD:

6-9-88

kindle scoop net  
PERSON RECORDING DATA: Jacques Melcher

OLD TAGS: 9709  
NEW TAGS: 4136384966

TUMOR SCORE: 0  
OTHER NEW TAGS: 7F7F5B1739 LH  
2440 - imbedded NEW TAGS: LH

STRAIGHT CARAPACE-LENGTH: 77.0  
WIDTH: 67.5

NOTCH LENGTH: 76.6  
DB: L.O. VB: L.C.

CURVED CARAPACE LENGTH: 83.5  
WIDTH: 77

HEAD WIDTH: 114

SEX: MALE, FEMALE OR UNDETERMINED

PPS: YES OR NO OR NE

TAIL LENGTH: T  C

RIGHT FRONT FLIPPER WIDTH:

SAMPLES COLLECTED:

PLASTRON LENGTH: 101.2

WEIGHT: 149 lbs  
tubes for  
Bleed for tub dot - spot  
New MT - 7007  
L & R

DESCRIPTIVE REMARKS:  
"1st basking"  
"2nd basking"  
"LH - headed notched"  
"Gloop photo w/ turtle"  
"frequent seen in Seawall Cam"  
TAG LOSS

28

CAPTURE DATE, LOCATION AND METHOD: 6/9/00

PERSON RECORDING DATA: Kuhlols bay deep net

OLD TAGS: 407731307 NEW TAGS: RFL LFL  
TUMOR SCORE 433 OTHER NEW TAGS: 40772F10031  
0 24342

STRAIGHT CARAPACE-LENGTH: 46.9 WIDTH: 36.6  
NOTCH LENGTH: 46.2 DB: L.O. VB: L.C.  
CURVED CARAPACE LENGTH: 50.5 WIDTH: 43.5

HEAD WIDTH: SEX: MALE, FEMALE OR UNDETERMINED  
PPS: YES OR NO OR NE 440  
TAIL LENGTH: T C

RIGHT FRONT FLIPPER WIDTH: SAMPLES COLLECTED:  
PLASTRON LENGTH: 37.9

WEIGHT: 33.165  
DESCRIPTIVE REMARKS: Blood-ppf wdot-spot  
MAT-9 Reprints

CAPTURE DATE, LOCATION AND METHOD: 6-9-00

PERSON RECORDING DATA: Kuhlols bay BASKING

OLD TAGS: 410C010013 NEW TAGS: RFL LFL  
TUMOR SCORE 0 OTHER NEW TAGS: 0750  
V671 V670

STRAIGHT CARAPACE-LENGTH: 47.9 WIDTH: 38.9  
NOTCH LENGTH: 47.7 DB: L.O. VB: L.C.  
CURVED CARAPACE LENGTH: 51.00 WIDTH: 45.0

HEAD WIDTH: SEX: MALE, FEMALE OR UNDETERMINED  
PPS: YES OR NO OR NE  
TAIL LENGTH: T C

RIGHT FRONT FLIPPER WIDTH: SAMPLES COLLECTED:  
PLASTRON LENGTH: 38.6

WEIGHT: 35.165  
DESCRIPTIVE REMARKS: Blood-ppf wdot-spot  
NEW MT-HO

Radimtot - 28.3c  
Deep body - 28.3c

12

CAPTURE DATE, LOCATION AND METHOD:

Kiholo Bay 6-9-00 BASKING  
PERSON RECORDING DATA: Jacques Melcher

OLD TAGS: 410 B130600 NEW TAGS: RFL LFL  
TUMOR SCORE H295 OTHER NEW TAGS:  
H294 H296

STRAIGHT CARAPACE-LENGTH: 50.5 WIDTH: 40.7  
NOTCH LENGTH: 50.1 DB: L.O. VB: L.C.  
CURVED CARAPACE LENGTH: 54.0 WIDTH: 47.0

HEAD WIDTH: SEX: MALE, FEMALE OR UNDETERMINED  
PPS: YES OR NO OR NE  
TAIL LENGTH: T C

RIGHT FRONT FLIPPER WIDTH: SAMPLES COLLECTED:

PLASTRON LENGTH: 36 lbs  
WEIGHT: Blood for TLD dot-spot  
MT-57 Re-printed

DESCRIPTIVE REMARKS: 7.8.16  
Prof. [unclear]

ATD

14

CAPTURE DATE, LOCATION AND METHOD:

Kiholo Bay 6-9-00 BASKING  
PERSON RECORDING DATA: Jerry

OLD TAGS: K437 NEW TAGS: 500E213E52  
K438 L.H.  
K433 OTHER NEW TAGS: 500F2B1760  
TUMOR SCORE 0

STRAIGHT CARAPACE-LENGTH: 54.6 WIDTH: 44.9  
NOTCH LENGTH: 54.1 DB: L.O. VB: L.C.  
CURVED CARAPACE LENGTH: 59 WIDTH: 57.5

HEAD WIDTH: SEX: MALE, FEMALE OR UNDETERMINED  
PPS: YES OR NO OR NE  
TAIL LENGTH: T C

RIGHT FRONT FLIPPER WIDTH: SAMPLES COLLECTED:

PLASTRON LENGTH: 45.2  
WEIGHT: 50 lbs  
Blood 4-TLD dot-spot  
New MT-78  
3rd lot L&R

DESCRIPTIVE REMARKS: LFL Head notch  
Plastron looks flat to gauge

6521 W 109th AVE  
Broomfield CO 80020

photo #79  
year 2000

CAPTURE DATE, LOCATION AND METHOD:

PERSON RECORDING DATA: Kiholo bay BASKING 6-9-00  
judique melane 199

OLD TAGS: H33

TUMOR SCORE: H32

NEW TAGS: 500F1F2370

OTHER NEW TAGS: 04H 502E766A4E

STRAIGHT CARAPACE-LENGTH: 54.4 WIDTH: 41.3

NOTCH LENGTH: 54.2 DB: L.O. VB: L.C

CURVED CARAPACE LENGTH: 58 WIDTH: 52

HEAD WIDTH: [ ]

PPS: YES OR NO OR NE [ ] SEX: MALE, FEMALE OR UNDETERMINED [ ]

TAIL LENGTH: T [ ] C [ ]

RIGHT FRONT FLIPPER WIDTH: [ ] SAMPLES COLLECTED: [ ]

PLASTRON LENGTH: [ ]

WEIGHT: 50 lbs

DESCRIPTIVE REMARKS: New MI 79  
3rd CAT  
L&R  
BLOOD FOR TUBET spot

27

110

CAPTURE DATE, LOCATION AND METHOD:

PERSON RECORDING DATA: Kiholo bay 6-9-00 BASKING  
judique melane

OLD TAGS: 20075E080409

TUMOR SCORE: 0

NEW TAGS: 1 LH 1

OTHER NEW TAGS: [ ]

STRAIGHT CARAPACE-LENGTH: 45.9 WIDTH: 36.5

NOTCH LENGTH: 45.8 DB: L.O. VB: L.C

CURVED CARAPACE LENGTH: 49.9 WIDTH: 42.5

HEAD WIDTH: [ ]

PPS: YES OR NO OR NE [ ] SEX: MALE, FEMALE OR UNDETERMINED [ ]

TAIL LENGTH: T [ ] C [ ]

RIGHT FRONT FLIPPER WIDTH: [ ] SAMPLES COLLECTED: [ ]

PLASTRON LENGTH: 37.0

WEIGHT: 28

DESCRIPTIVE REMARKS: New MI 80  
3rd CAT  
flat to gaugh L&R  
BLOOD FOR TUBET spot



CAPTURE DATE, LOCATION AND METHOD:

PERSON RECORDING DATA: Kiholo bay BASKING 6-9-84  
Jacques Melcher 6-9-84

OLD TAGS:

K405

TUMOR SCORE

B224

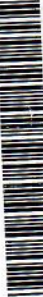
0

NEW TAGS:

LH

OTHER NEW TAGS:

#160600800



500F215D5B

STRAIGHT CARAPACE-LENGTH: 52.7

WIDTH: 39.7

NOTCH LENGTH: 52.2

DB:

L.O.

VB:

L.C.

CURVED CARAPACE LENGTH: 56

WIDTH: 47

HEAD WIDTH:

PPS: YES OR NO OR NE

yes

TAIL LENGTH: T

C

RIGHT FRONT FLIPPER WIDTH:

SAMPLES COLLECTED:

PLASTRON LENGTH: 47.3

40

WEIGHT: 42

160600800

Blood + TW dot spots

NEW MT 81

DESCRIPTIVE REMARKS:

LFL - has busted plastron  
Blue tag

CAPTURE DATE, LOCATION AND METHOD:

PERSON RECORDING DATA: Kiholo bay 6-9-84  
Jacques Melcher

OLD TAGS:

41505A3D68

TUMOR SCORE

4130

0

NEW TAGS:

LH

OTHER NEW TAGS:

4131

5019261516



STRAIGHT CARAPACE-LENGTH: 40.6

WIDTH: 34.6

NOTCH LENGTH: 40.4

DB:

L.O.

VB:

L.C.

CURVED CARAPACE LENGTH: 43

WIDTH: 39.5

HEAD WIDTH:

PPS: YES OR NO OR NE

yes

TAIL LENGTH: T

C

RIGHT FRONT FLIPPER WIDTH:

SAMPLES COLLECTED:

PLASTRON LENGTH: 33.1

33.1

WEIGHT: 23

NEW MT 82

Blood + TW dot spots

DESCRIPTIVE REMARKS:

plastron 600102 little flat

CAPTURE DATE, LOCATION AND METHOD:

Kiholo bay BASKING 9/19/00

PERSON RECORDING DATA:

Gregg

OLD TAGS:

NEW TAG

500E1F2966



500F292912



TUMOR SCORE

0

OTHER NEW TAGS:

RH

STRAIGHT CARAPACE-LENGTH:

58.7

WIDTH:

46.9

NOTCH LENGTH:

58.6

DB:

L.O.

VB:

L.C.

CURVED CARAPACE LENGTH:

69.0

WIDTH:

86.5

HEAD WIDTH:

SEX:

MALE, FEMALE OR UNDETERMINED

PPS: YES OR NO OR NE

NO

TAIL LENGTH:

T

C

RIGHT FRONT FLIPPER WIDTH:

SAMPLES COLLECTED:

PLASTRON LENGTH:

47.7

WEIGHT: NOT RECORDED

40 lbs

DESCRIPTIVE REMARKS:

Plastron looks like flat belly

blood + tubot spots

New mt #83

2nd lat  
L&R

27

20

CAPTURE DATE, LOCATION AND METHOD:

Kiholo bay BASKING 6-9-00

PERSON RECORDING DATA: Max Iba

Melcher

OLD TAGS:

DAIA5743

NEW TAGS:

LH 500E184963

TUMOR SCORE

0

OTHER NEW TAGS:

B958

B956

B957

STRAIGHT CARAPACE-LENGTH:

49.3

WIDTH:

38.9

NOTCH LENGTH:

49.0

DB:

L.O.

VB:

L.C.

CURVED CARAPACE LENGTH:

53.5

WIDTH:

45.5

HEAD WIDTH:

SEX:

MALE, FEMALE OR UNDETERMINED

PPS: YES OR NO OR NE

yes

TAIL LENGTH:

T

C

RIGHT FRONT FLIPPER WIDTH:

SAMPLES COLLECTED

PLASTRON LENGTH:

41.2

WEIGHT:

40 lbs

blood + tubot spots

New mt #84

DESCRIPTIVE REMARKS:

3rd lat  
L&R

CAPTURE DATE, LOCATION AND METHOD:

PERSON RECORDING DATA: Kiholo Bay Boaking Mizerisa Melcher

OLD TAGS: K629 K630 K631

TUMOR SCORE: 0

NEW TAGS: LA 502E265B1D

OTHER NEW TAGS: 2H 500F214757

STRAIGHT CARAPACE-LENGTH: 47.6 WIDTH: 37.6 L.C.   

NOTCH LENGTH: 46.9 DB:    L.O.    VB:   

CURVED CARAPACE LENGTH: 51.5 WIDTH: 45

HEAD WIDTH:    SEX:    MALE, FEMALE OR UNDETERMINED

PPS: YES OR NO OR NE yes

TAIL LENGTH: T    C   

RIGHT FRONT FLIPPER WIDTH: 37.6 SAMPLES COLLECTED:   

PLASTRON LENGTH: 34.0 blood for Toldt spot

WEIGHT:    NEW MT 86.5

DESCRIPTIVE REMARKS: 3rd lot L&R

CAPTURE DATE, LOCATION AND METHOD:

PERSON RECORDING DATA: Kiholo Bay Boaking

OLD TAGS:         

TUMOR SCORE: 0

NEW TAGS: LF 500F2B752E

OTHER NEW TAGS: 2H 500F222936

STRAIGHT CARAPACE-LENGTH: 62.9 WIDTH: 48.9 L.C.   

NOTCH LENGTH: 60.9 DB:    L.O.    VB:   

CURVED CARAPACE LENGTH: 68 WIDTH: 60

HEAD WIDTH:    SEX:    MALE, FEMALE OR UNDETERMINED

PPS: YES OR NO OR NE yes

TAIL LENGTH: T    C   

RIGHT FRONT FLIPPER WIDTH:    SAMPLES COLLECTED:   

PLASTRON LENGTH: 50.9 blood for Toldt spot

WEIGHT: 70 NEW MT 85

DESCRIPTIVE REMARKS: Plastron looks like blood on plastron  
exhausting 9 to 10 hauled  
Marginal Right indent

END  
6-9-00

1 #3 sites

26

CAPTURE DATE, LOCATION AND METHOD:

6/26/00 Keaukua, Hawaii  
PERSON RECORDING DATA: Allison Haseleward

CAPTURE DATE, LOCATION AND METHOD:

6/26/00 Keaukua, Hawaii  
PERSON RECORDING DATA: Amy Jones

OLD TAGS: 11478

NEW TAGS: RFL

TUMOR SCORE: K-966

LFL

OTHER NEW TAGS: LH-11C985709

OTHER NEW TAGS:

STRAIGHT CARAPACE-LENGTH: 46.6

WIDTH: 39.9

NOTCH LENGTH: 46.6

L.O. VB: L.C

CURVED CARAPACE LENGTH: 49.0

WIDTH: 44.0

HEAD WIDTH:

SEX: MALE, FEMALE OR UNDETERMINED

PPS: YES OR NO OR NE YES

TAIL LENGTH: T C

RIGHT FRONT FLIPPER WIDTH:

SAMPLES COLLECTED:

PLASTRON LENGTH: 39.1

Blood by TN + dot spot

WEIGHT: 36

Weight: 38

DESCRIPTIVE REMARKS:

Reminded tool #3 L-R on late side

CAPTURE DATE, LOCATION AND METHOD:

6/26/00 Keaukua, Hawaii  
PERSON RECORDING DATA: Amy Jones

OLD TAGS: # 41361686D

NEW TAGS: RFL

TUMOR SCORE: RH 4135291829

LFL

OTHER NEW TAGS:

OTHER NEW TAGS:

STRAIGHT CARAPACE-LENGTH: 50.1

WIDTH: 37.8

NOTCH LENGTH: 50.1

DB: L.O. VB: L.C

CURVED CARAPACE LENGTH: 54.0

WIDTH: 44.5

HEAD WIDTH:

SEX: MALE, FEMALE OR UNDETERMINED

PPS: YES OR NO OR NE

TAIL LENGTH: T C

RIGHT FRONT FLIPPER WIDTH:

SAMPLES COLLECTED:

PLASTRON LENGTH: 40.2

Blood by TN + dot spot

WEIGHT: 38

Weight: 38

DESCRIPTIVE REMARKS:

Weight (38) too close to mass of underside

CAPTURE DATE, LOCATION AND METHOD:

6/26/00 Keauhou Nui, Hawaii  
PERSON RECORDING DATA: Nick & Amy Jones

SCARP NET

OLD TAGS: (N) 41361608  
NEW TAGS: RFL  
LFL  
TUMOR SCORE 0  
OTHER NEW TAGS: Q385  
11510  
YE60

STRAIGHT CARAPACE-LENGTH: 41.3  
WIDTH: 33.2  
NOTCH LENGTH: 41.2  
DB: L.O. VB: L.C.  
CURVED CARAPACE LENGTH: 44.5  
WIDTH: 40.5

HEAD WIDTH:  
SEX: MALE, FEMALE OR UNDETERMINED

PPS: YES OR NO OR NE  YES

TAIL LENGTH: T  C  
RIGHT FRONT FLIPPER WIDTH:

SAMPLES COLLECTED:

PLASTRON LENGTH: 32.9  
WEIGHT: 25  
Blood by TW + spot

DESCRIPTIVE REMARKS:

DISPOSE YELLOW DISCOLORATION @ PHARYNX  
LENGTH (1.1cm) REPRESSION PROXIMAL USOPHAGES  
LINEAR (1.1cm)

A sample could be  
A scale - 7 centibels

CAPTURE DATE, LOCATION AND METHOD:

6/16/00 Keauhou Nui, Hawaii  
PERSON RECORDING DATA: Nick &

SCARP NET

OLD TAGS: (N) 413E482A1B  
NEW TAGS: RFL  
LFL  
TUMOR SCORE 0  
OTHER NEW TAGS: 7F7F5C00HC  
K95  
11004

STRAIGHT CARAPACE-LENGTH: 48.7  
WIDTH: 37.3  
NOTCH LENGTH: 48.4  
DB: L.O. VB: L.C.  
CURVED CARAPACE LENGTH: 52.5  
WIDTH:

HEAD WIDTH:  
SEX: MALE, FEMALE OR UNDETERMINED

PPS: YES OR NO OR NE  YES

TAIL LENGTH: T  C  
RIGHT FRONT FLIPPER WIDTH:

SAMPLES COLLECTED:

PLASTRON LENGTH: 39.7  
WEIGHT: 38  
Blood by TW  
+ spot

DESCRIPTIVE REMARKS:

TUMOR: IMPACT VESSEL PAPILLARY SUBMUCOSAL HYPERPLASIA  
T-SITES: HAD ANTERIOR LATENT @ PHX. REFUSE VESSELWORK.

Digital photo cameras

Maura Cam. Release

CAPTURE DATE, LOCATION AND METHOD:

6/26/00 Keawe Nui, Hawaii

6/26/00 Keawe Nui, Hawaii

PERSON RECORDING DATA: Amy Jones

PERSON RECORDING DATA: Amy Jones

OLD TAGS:

NEW TAGS:

TUMOR SCORE

OTHER NEW TAGS:

0

HR

413570205C



41357B5C20



STRAIGHT CARAPACE-LENGTH: 45.3

WIDTH: 35.1

NOTCH LENGTH: 45.3

DB: [ ]

L.O. [ ]

VB: [ ]

L.C. [ ]

CURVED CARAPACE LENGTH: 48.0

WIDTH: 42.0

HEAD WIDTH: [ ]

PPS: YES OR NO OR NE

yes

SEX: MALE, FEMALE OR UNDETERMINED

TAIL LENGTH: T [ ]

C [ ]

RIGHT FRONT FLIPPER WIDTH: [ ]

SAMPLES COLLECTED: [ ]

PLASTRON LENGTH: 36.3

WEIGHT: 30

DESCRIPTIVE REMARKS: [ ]

DISPOSE YOUNG DISCARDING (2) + (2) CARAPACE PLASTER IN

LQ = 1.7 ml

CAPTURE DATE, LOCATION AND METHOD:

6/26/00 Keawe Nui, Hawaii

6/26/00 Keawe Nui, Hawaii

PERSON RECORDING DATA: Amy Jones

PERSON RECORDING DATA: Amy Jones

OLD TAGS:

NEW TAGS:

TUMOR SCORE

OTHER NEW TAGS:

0

HR

4136104459



41351E563C



STRAIGHT CARAPACE-LENGTH: 48.1

WIDTH: 36.4

NOTCH LENGTH: 47.9

DB: [ ]

L.O. [ ]

VB: [ ]

L.C. [ ]

CURVED CARAPACE LENGTH: 51.5

WIDTH: 43.0

HEAD WIDTH: [ ]

PPS: YES OR NO OR NE

[ ]

SEX: MALE, FEMALE OR UNDETERMINED

TAIL LENGTH: T [ ]

C [ ]

RIGHT FRONT FLIPPER WIDTH: [ ]

SAMPLES COLLECTED: [ ]

PLASTRON LENGTH: 37.4

WEIGHT: 32

DESCRIPTIVE REMARKS: [ ]

DISPOSE YOUNG DISCARDING (2) + (2) CARAPACE PLASTER IN

LQ = 1.7 ml

CAPTURE DATE, LOCATION, AND METHOD:

06-00

Scoop Net

PERSON RECORDING DATA: Amy Jones

Keawā Nui, Hawaii

OLD TAGS:

Empty boxes for old tags

LH

NEW TAGS: 4136245450

TUMOR SCORE

0

OTHER NEW TAGS: RH

41371D2E7A

STRAIGHT CARAPACE-LENGTH: 41.9

41.9

WIDTH: 33.9

33.9

NOTCH LENGTH: 41.6

41.6

DB:

L.O.

VB: L.C

CURVED CARAPACE LENGTH: 44.0

44.0

WIDTH: 38.5

38.5

HEAD WIDTH:

SEX: MALE, FEMALE OR UNDETERMINED

PPS: YES OR NO OR NE

YES

TAIL LENGTH: T

C

RIGHT FRONT FLIPPER WIDTH:

SAMPLES COLLECTED

PLASTRON LENGTH: 33.3

33.3

by 2 spots

WEIGHT: 22

22

blood dot

DESCRIPTIVE REMARKS:

Tip Left front flipper missing + healed + 1st + 2nd lateral Right healing impact injury 6/8 x 3 cm LQ = 1 ml

CAPTURE DATE, LOCATION, AND METHOD:

06-12-00

Scoop Net

PERSON RECORDING DATA: Amy Jones

Keawā Nui, Hawaii

OLD TAGS:

Empty boxes for old tags

NEW TAGS: LH

413E293910

TUMOR SCORE

0

OTHER NEW TAGS: RH

413D7F2C22

STRAIGHT CARAPACE-LENGTH: 52.9

52.9

WIDTH: 42.7

42.7

NOTCH LENGTH: 52.2

52.2

DB:

L.O.

VB: L.C

CURVED CARAPACE LENGTH: 56.5

56.5

WIDTH: 49.0

49.0

HEAD WIDTH:

SEX: MALE, FEMALE OR UNDETERMINED

PPS: YES OR NO OR NE

YES

TAIL LENGTH: T

C

RIGHT FRONT FLIPPER WIDTH:

SAMPLES COLLECTED

PLASTRON LENGTH: 42.4

42.4

blood by TW + dot

WEIGHT: 43

43

spot

DESCRIPTIVE REMARKS:

LQ = 2.3 ml PLASTRON 15 A little flat

CAPTURE DATE, LOCATION AND METHOD:

6/26/00 Keewa Nuvi, Hawaii

6/26/00 Keewa Nuvi, Hawaii

30

PERSON RECORDING DATA: Amy Jones

metal tags

OLD TAGS: J26, J27, J28

NEW TAGS: LH 4137053340, RA 41357F684B

TUMOR SCORE: 0

STRAIGHT CARAPACE-LENGTH: 57.5

WIDTH: 42.5

NOTCH LENGTH: 56.9

DB: L.O. VB: L.C.

CURVED CARAPACE LENGTH: 51.5

WIDTH: 53.0

HEAD WIDTH:

SEX: MALE, FEMALE OR UNDETERMINED

PPS: YES OR NO OR NE YES

TAIL LENGTH: T C

RIGHT FRONT FLIPPER WIDTH:

SAMPLES COLLECTED:

PLASTRON LENGTH: 46.1

blood by T, blood by J

WEIGHT: 53

DESCRIPTIVE REMARKS:

LA = 3.0 ml

3 Amphipods, 1 left. Soft pink leaf

CAPTURE DATE, LOCATION AND METHOD:

6/26/00 Keewa Nuvi, Hawaii

PERSON RECORDING DATA: Amy Jones

OLD TAGS: 4135717278

NEW TAGS: RFL, LFL

TUMOR SCORE: 0

OTHER NEW TAGS: 413533173E

STRAIGHT CARAPACE-LENGTH: 55.8

WIDTH: 44

NOTCH LENGTH: 55.6

DB: L.O. VB: L.C.

CURVED CARAPACE LENGTH: 58.5

WIDTH: 53

HEAD WIDTH:

SEX: MALE, FEMALE OR UNDETERMINED

PPS: YES OR NO OR NE YES

TAIL LENGTH: T C

RIGHT FRONT FLIPPER WIDTH:

SAMPLES COLLECTED:

PLASTRON LENGTH: 45.2

blood by J, blood by J + J

WEIGHT: 47

DESCRIPTIVE REMARKS:

a little flat

AREA OF E-RUTREMA L. THORAC. 2MM X 6MM

down throat.



CAPTURE DATE, LOCATION AND METHOD:

6/26/00 Hawaii  
Keanu No. 5009  
Amy Jones

PERSON RECORDING DATA: Amy Jones

OLD TAGS: 414B080A41  
NEW TAGS: RFL  
LFL  
LFLFLYHIF2E5FX  
OTHER NEW TAGS: 4064  
4065  
4145

TUMOR SCORE: 0

STRAIGHT CARAPACE-LENGTH: 44.1 WIDTH: 35.9 L.C.

NOTCH LENGTH: 44 DB: L.O. VB: L.C.

CURVED CARAPACE LENGTH: 46.5 WIDTH: 42

HEAD WIDTH: [ ] SEX: MALE, FEMALE OR UNDETERMINED

PPS: YES OR NO OR NE Yes

TAIL LENGTH: T [ ] C [ ]

RIGHT FRONT FLIPPER WIDTH: [ ] SAMPLES COLLECTED: [ ]

PLASTRON LENGTH: 35.5

WEIGHT: 25

DESCRIPTION REMARKS: Plastron is a little flat. known sample collected

blood by TW X  
dot spot

CAPTURE DATE, LOCATION AND METHOD:

6/26/00 Hawaii  
Keanu No. 5009  
Amy Jones

PERSON RECORDING DATA: Amy Jones

OLD TAGS: 413E271E22  
NEW TAGS: L.H.  
OTHER NEW TAGS: RH

TUMOR SCORE: 0

STRAIGHT CARAPACE-LENGTH: 47.8 WIDTH: 38.6

NOTCH LENGTH: 47.6 DB: L.O. VB: L.C.

CURVED CARAPACE LENGTH: 50.8 WIDTH: 45.7

HEAD WIDTH: [ ] SEX: MALE, FEMALE OR UNDETERMINED

PPS: YES OR NO OR NE Yes

TAIL LENGTH: T [ ] C [ ]

RIGHT FRONT FLIPPER WIDTH: [ ] SAMPLES COLLECTED: [ ]

PLASTRON LENGTH: 38.7

WEIGHT: 34

DESCRIPTION REMARKS: blood by TW  
+ dot spot

CAPTURE DATE, LOCATION AND METHOD:

6/26/00

Keawala Nui,  
Hawaii

PERSON RECORDING DATA:

Amy Jones

OLD TAGS: 291503DIB4C



NEW TAGS: LH

TUMOR SCORE

0

OTHER NEW TAGS:

Empty boxes for other new tags

OLD TAGS:

Empty boxes for old tags

NEW TAGS: RFL

LFL

OTHER NEW TAGS:

Empty boxes for other new tags

STRAIGHT CARAPACE-LENGTH: 47.3

WIDTH: 87.2

NOTCH LENGTH: 47.2

L.O.

VB: L.C

CURVED CARAPACE LENGTH: 99.8

WIDTH: 48

HEAD WIDTH:

PPS: YES OR NO OR NE Yes

SEX: MALE, FEMALE OR UNDETERMINED

TAIL LENGTH: T

C

RIGHT FRONT FLIPPER WIDTH:

SAMPLES COLLECTED:

PLASTRON LENGTH: 37.7

SAMPLES COLLECTED BY

WEIGHT: 31

Blood by  
Blood spot

DESCRIPTIVE REMARKS:

Mouth sample collected

CAPTURE DATE, LOCATION AND METHOD:

32

PERSON RECORDING DATA:

OLD TAGS:

Empty boxes for old tags

NEW TAGS: RFL

LFL

OTHER NEW TAGS:

Empty boxes for other new tags

STRAIGHT CARAPACE-LENGTH:

WIDTH:

NOTCH LENGTH:

L.O.

VB: L.C

CURVED CARAPACE LENGTH:

WIDTH:

HEAD WIDTH:

PPS: YES OR NO OR NE

SEX: MALE, FEMALE OR UNDETERMINED

TAIL LENGTH: T

C

RIGHT FRONT FLIPPER WIDTH:

SAMPLES COLLECTED

PLASTRON LENGTH:

Empty boxes for plastron length

WEIGHT:

Empty boxes for weight

DESCRIPTIVE REMARKS:

Empty boxes for descriptive remarks

8 Recaptures of 13 6/26/00 Keawani  
 (3ave M/L Releases) Keawani 6-26-00 ~~Mauna Lani~~ Historical Informati

Tag Information:

Tag Number	Date	Tag Type	Tag Position
35291829	8/19/99	PIT	RHF
3616686D	8/19/99	PIT	LHF

①

Date      Type of Encounter      Location:      TumorRank:      NestingAct:      Straight Carapace

8/19/99	Near Shore	Hawaii, Keawa Nui Bay	0	-	49.8
6-26/00					50.1

Tag Information:

Tag Number	Date	Tag Type	Tag Position
11004	7/3/91	I681	R23
3E482A1B	8/19/99	PIT	LHF
7F5C004C	6/15/93	PIT	PIT
J18	6/15/93	I681	LFL
K95	9/24/93	I681	RHF

Mauna Lani Release

Date      Type of Encounter      Location:      TumorRank:      NestingAct:      Straight Carapace

7/3/91	Near Shore	Hawaii, Mauna Lani, Captive	0	-	---
7/4/91	Near Shore	Hawaii, Mauna Lani, Captive	0	-	26.7
7/4/92	Near Shore	Hawaii, Mauna Lani, Captive	0	-	33.8
6/15/93	Near Shore	Hawaii, Mauna Lani, Captive	0	-	41.8
7/4/93	Near Shore	Hawaii, Mauna Lani	0	-	---
9/24/93	Near Shore	Hawaii, Keawa Nui, South Kohala	0	-	42.5
10/27/97	Near Shore	Hawaii, Keawa Nui, South Kohala	0	-	47.1
8/19/99	Near Shore	Hawaii, Keawa Nui Bay, Mauna Lani Beach Club	0	-	48.3
9/1/99	Near Shore	Hawaii, Kiholo	0	-	48.4
9/1/99	Near Shore	Hawaii, Keawa Nui Bay, Mauna Lani Beach Club	0	-	48.4
6/26/00					48.7

(34)

Tag Information:

(3)

Tag Number	Date	Tag Type	Tag Position
01392829	6/13/96	PIT	PIT
11510			R34
361E2843	8/19/99	PIT	LHF
Q585	6/13/96	I681	RFL
YE60		M1	LFL

MAUNA LANI Release 1996

Date	Type of Encounter	Location:	TumorRank:	NestingAct:	Straight Carapace
6/13/96	Near Shore	Hawaii, Mauna Lani, Captive	0	-	37.5
7/4/96	Near Shore	Hawaii, Mauna Lani	0	-	38.2
8/19/99	Near Shore	Hawaii, Keawa Nui Bay, Mauna Lani Hotel Beach	0	-	40.5
5/30/00	Near Shore	Hawaii, Mauna Lani, Mauna Lani Beach	0	-	---

6/26/00 (PRAE NOTATIONS)

41.3

(4)

Tag Information:

Tag Number	Date	Tag Type	Tag Position
J26	6/15/93	I681	RFL
J27	6/15/93	I681	LFL
J28	6/15/93	I681	LHF

Date	Type of Encounter	Location:	TumorRank:	NestingAct:	Straight Carapace
6/15/93	Near Shore	Hawaii, Keawa Nui, South Kohala	0	-	42.4

6/26/00

57.5

(5)

Tag Information:

Tag Number	Date	Tag Type	Tag Position
3533173E	8/19/99	PIT	RHF
3571727B	8/19/99	PIT	LHF

Date	Type of Encounter	Location:	TumorRank:	NestingAct:	Straight Carapace
8/19/99	Near Shore	Hawaii, Keawa Nui, South Kohala, Hand/Snorkel	0	-	55.6

6/24/00

55.8

35

Tag Information:

Tag Number	Date	Tag Type	Tag Position
1F2E5F2C	9/23/98	PIT	PIT
4064	8/19/99	I681	LFL
4065	8/19/99	I681	LHF
4145	8/19/99	I681	RFL
4B686A41	9/23/98	PIT	LHF

6

Date	Type of Encounter	Location:	TumorRank:	NestingAct:	Straight Cara
9/23/98	Near Shore	Hawaii, Keawa Nui Bay	0	-	44.5
8/19/99	Near Shore	Hawaii, Keawa Nui Bay	0	-	44.1
6/26/00					44.1

same

Tag Information:

Tag Number	Date	Tag Type	Tag Position
1F2E5F2C	9/23/98	PIT	PIT
4064	8/19/99	I681	LFL
4065	8/19/99	I681	LHF
4145	8/19/99	I681	RFL
4B686A41	9/23/98	PIT	LHF

Date	Type of Encounter	Location:	TumorRank:	NestingAct:	Weight
9/23/98	Near Shore	Hawaii, Keawa Nui Bay	0	-	25.0
8/19/99	Near Shore	Hawaii, Keawa Nui Bay	0	-	24.0

lost wt.

36

7

Tag Information:

MOTO TOOL "3"  
People Biter

Historical Informa

Tag Number	Date	Tag Type	Tag Position
11478	7/15/93	I681	RFL
1C683709	9/23/98	PIT	LHF
2A597D61	6/20/94	PIT	PIT
3B652A7B	9/23/98	PIT	PIT
K966	6/20/94	I681	LFL

MAUNA LANI  
Release 1994

Date	Type of Encounter	Location:	TumorRank:	NestingAct:	Straight Carapace
7/15/93	Near Shore	Hawaii, Mauna Lani, Captive	0	-	---
6/20/94	Near Shore	Hawaii, Mauna Lani, Captive	0	-	32.9
7/4/94	Near Shore	Hawaii, Mauna Lani	0	-	---
11/29/94	Near Shore	Hawaii, Keawa Nui, South Kohala	0	-	33.4
9/23/98	Near Shore	Hawaii, Keawa Nui Bay	0	-	43.9
8/19/99	Near Shore	Hawaii, Keawa Nui Bay, Mauna Lani Beach Club	0	-	44.9
9/1/99	Near Shore	Hawaii, Kiholo	0	-	45.4
9/1/99	Near Shore	Hawaii, Keawa Nui Bay, Mauna Lani Beach Club	0	-	45.4
9/4/99	Near Shore	Hawaii, Mauna Lani, Captive	0	-	---
9/4/99	Near Shore	Hawaii, Keawa Nui Bay, Bay Club	0	-	---
9/7/99	Near Shore	Hawaii, Keokeo Park, N. Kohala	0	-	---
9/7/99	Near Shore	Hawaii, Mauna Lani, Captive	0	-	---

6/26/00

46.6

Kiholo

9/24/00

Data logger - Back pond - # 29581  
appears to be in good shape, but engaged -  
will return it

KIHOLO LAGOON  
NIGHT BASKER CAPTURES  
9/23/00 SATURDAY

Team: Thomas and Laura, Jill Quintance, Katie Harrington and Marc Rice

Arrived at Kiholo Bay at 1400 hours and set up camp by the Awa. Began first survey at 1500.

1500-1430 Weather clear and hot with an onshore (west wind) at 15 knots. Tide high (2.3 feet) at 1400. Lagoon had a number of white (dry) baskers. In order of appearance from NE to West and around the lagoon.

FIRST SURVEY (Marc)

C91, #1, C76, C57, C86, C2, C63, C60, C55, #2, #3, C34, #4, C53  
TOTAL OUT = 14

SECOND SURVEY (Jill and Katie)

1715- Weather clear with onshore wind at 10 knots. Tide dropping.

C91, #1, #5, C76, #6, C57, C86, #7, C2, #8, C63, #9, #10, C74, C60, C55, #11, #12, #13,  
#14, #16, #53 (LASTED AS #17)  
TOTAL OUT = 22

Night Capture:

There were six turtles out that we were able to capture. Each of these had been observed basking earlier in the day.

#1	52 lbs	time = 2011	Tb =	29.7 C	out since-
MT76	36	2040	28.6	15.18	1400
MT547	36	2050	28.3	14.50	
MT2	17	2105	26	15.00	
MT96	62	2127	26.5	16.00	
MT97	20	2148	25.0	15.00	

I will fax the data sheets to you tomorrow.

We had a good trip with plenty of action and nobody else around. Amazing for a weekend! My next thought is to simply spend time out there and observe the time when turtles that extend basking into the night, move back into the water. The night scope will be invaluable for this portion of the study.

Go to page 57

M-2300

KIHOLO

23 OCT 2000

①

capture date

9/23 ✓

location and method of capture

band capture at db11 -  
Basking!

recorder

V675 ✓ LR ✓
V694 ✓ RR ✓

PIT tag bar code AH ✓

4136106E28 ✓

old tags:

other new tags:

straight carapace length:  cm, notch:  cm

straight carapace width:  cm

curved carapace length:  cm, curved width:  cm

head width:  cm, total:  cm

tail length:  cm

weight:  lbs,  cm

right front flipper:  cm

plastron:  cm

descriptive remarks

(Gulf of Mexico)

Carapace length = 26.0

Right front flipper = 29.7

Plastron length =

Tail length =

SEPT 23,  
2000  
KIHOLO  
MARC  
RICE

No MTT  
No PPS

37

Released ML July 4, 00

330  
380

**SKIPPING SHORELINE (PRINT REC. TEST)**  
 CAPTURE DATE, LOCATION AND METHOD:  
 7-1-00 Mauna Lanu Fish Pond

PERSON RECORDING DATA: Sandie Foster

NEW TAGS: 4135675746  
 L.H.  
 OTHER TAGS: 413E465B00  
 K.H.

OLD TAGS: 10551  
 10552  
 10553  
 H-163

TUMOR SCORE:  0

STRAIGHT CARAPACE-LENGTH: 69.0 WIDTH: 52.8 L.C.  0

NOTCH LENGTH: 69.0 DB:  0 L.O.  0

CURVED CARAPACE LENGTH: 73.0 WIDTH: 66.5

HEAD WIDTH: 9.7

SEX: YES OR NO OR NE  YES

PPS: YES OR NO OR NE  YES

TAIL LENGTH: T 31.0 C 29.0

RIGHT FRONT FLIPPER WIDTH: 11.9

PLASTRON LENGTH: 57.4

WEIGHT: 89 lbs

PLASTRON LENGTH: 8cc blood

WEIGHT: 99 lbs

SAMPLES COLLECTED:

PLASTRON REMARKS: 11g DPT 1g skinning DOT BLOT MIL-D 1g not tood left and right lateral and right

PRINT TOS including NOT TOOD cavity

**HAUD -**  
 CAPTURE DATE, LOCATION AND METHOD:  
 7-1-00 Mauna Lanu fish pond

PERSON RECORDING DATA: ALLISON BEALE

NEW TAGS: 4061671245  
 L.H.  
 OTHER TAGS: 413704174D  
 NEW TAGS:  0

OLD TAGS: 10556  
 10554

TUMOR SCORE:  0

STRAIGHT CARAPACE-LENGTH: 69.6 WIDTH: 54.1

NOTCH LENGTH: 69.6 DB:  0 L.O.  0

CURVED CARAPACE LENGTH: 76.0 WIDTH: 68.0

HEAD WIDTH: 9.6

SEX: YES OR NO OR NE  YES

PPS: YES OR NO OR NE  YES

TAIL LENGTH: T 1615 C 10.0

RIGHT FRONT FLIPPER WIDTH: 10.7

PLASTRON LENGTH: 56.0

WEIGHT: 94 #

PLASTRON LENGTH: 8cc blood for DNA and plasma DOT BLOT Biotiny

WEIGHT: 94 #

PLASTRON EXAM: ORAL EXAM

PLASTRON REMARKS: 190" NOT TOOD

PRINT TOS including NOT TOOD cavity

SAMPLES COLLECTED:

PLASTRON REMARKS: 190" NOT TOOD

PRINT TOS including NOT TOOD cavity

3/15 SKINNY!  
 3/15 PCV (17.0 and 2.3 mm)

3/15 PCV (17.0 and 2.3 mm)



2

Reminder Mandalay Bay Ag. for the Quantances

CAPTURE DATE, LOCATION AND METHOD:

7/6/08 Basking North Pond

76/68 Kimo basking

PERSON RECORDING DATA:

PERSON RECORDING DATA: Jill

OLD TAGS: K-697

NEW TAGS: RFL

TUMOR SCORE: 0

LFL

OTHER NEW TAGS: 1A-4104

OTHER NEW TAGS: B22DC

STRAIGHT CARAPACE-LENGTH: 53.8

WIDTH: 42.7

NOTCH LENGTH: 53.6

DB: 58

L.O. VB: L.C

CURVED CARAPACE LENGTH: 50

WIDTH: 50

HEAD WIDTH: [ ]

SEX: MALE, FEMALE OR UNDETERMINED

PPS: YES OR NO OR NE

yes

TAIL LENGTH: T [ ]

C

RIGHT FRONT FLIPPER WIDTH: [ ]

SAMPLES COLLECTED

PLASTRON LENGTH: 435

WEIGHT: 42 lbs

DESCRIPTIVE REMARKS:

Ts = 26° C photo 5 heavy silt on

Tc = 25° C

Tb = 31.8° C

Tsu = 16° C

carapace

new #91

PERSON RECORDING DATA: Jill

OLD TAGS: [ ]

NEW TAGS: LH

TUMOR SCORE: 0

OTHER NEW TAGS: RH

STRAIGHT CARAPACE-LENGTH: 62.4

WIDTH: 62.4

NOTCH LENGTH: 62.4

DB: [ ]

L.O. VB: L.C

CURVED CARAPACE LENGTH: 68.9

WIDTH: 61.9

HEAD WIDTH: 9.7

SEX: MALE, FEMALE OR UNDETERMINED

PPS: YES OR NO OR NE

yes

TAIL LENGTH: T 11.6

C 11.5

RIGHT FRONT FLIPPER WIDTH: [ ]

SAMPLES COLLECTED

PLASTRON LENGTH: 50.0

WEIGHT: 79 lbs

DESCRIPTIVE REMARKS:

11/11/08 34 mt-92

11/11/08 34 mt-92

Ts = 31

Tc = 32

Tb = 32.5

39

→ need black paint  
knee pads

CAPTURE DATE, LOCATION AND METHOD:

7/6/00 Kiholo

PERSON RECORDING DATA: Laura Rice

OLD TAGS:

Q-280

Y-238

Y-237

LF 200C73627 F

NEW TAGS: RFL

LFL

mototool 93

TUMOR SCORE

0

OTHER NEW TAGS:

STRAIGHT CARAPACE-LENGTH: 63.5

WIDTH: 51.7

NOTCH LENGTH:

DB:

L.O.

VB:

L.C.

CURVED CARAPACE LENGTH: 68.4

WIDTH: 61.4

HEAD WIDTH: 9.9

SEX: MALE, FEMALE OR UNDETERMINED

PPS: YES OR NO OR NE

TAIL LENGTH: T 16 C 11

RIGHT FRONT FLIPPER WIDTH:

SAMPLES COLLECTED

PLASTRON LENGTH: 50

WEIGHT: 72 lb.

DESCRIPTIVE REMARKS:

little fat  
right hand flipper is missing 1/2 lengthwise  
mint red shirt clustered  
photo #11  
♀  
missing BB

Ts=34°C

Tc=33°C

Tb=31.4°

soft areas to the plastron

CAPTURE DATE, LOCATION AND METHOD:

7/6/00 Kiholo Basking South Beach

PERSON RECORDING DATA: Laura Rice

OLD TAGS:

#50 (mototool)

Q 698

Q 696

Q 697

NEW TAGS: RFL

LFL

TUMOR SCORE

0

OTHER NEW TAGS:

STRAIGHT CARAPACE-LENGTH: 44.5

WIDTH: 35.2

NOTCH LENGTH: 43.7

DB:

L.O.

VB:

L.C.

CURVED CARAPACE LENGTH: 47.2

WIDTH: 40.5

HEAD WIDTH: 7.3

SEX: MALE, FEMALE OR UNDETERMINED

PPS: YES OR NO OR NE Yes

TAIL LENGTH: T 9 C 6

RIGHT FRONT FLIPPER WIDTH:

SAMPLES COLLECTED

PLASTRON LENGTH: 36.5

WEIGHT: 28 lbs.

DESCRIPTIVE REMARKS:

photo #12

Ts=34°C

Tc=32°C

Tb=28.3°C

Mototool 50

CAPTURE DATE, LOCATION AND METHOD:

Kiholo Bay Basking South Beach  
PERSON RECORDING DATA: Laura Rice 7/6/00

OLD TAGS: 41362A546C RFL

Y284

TUMOR SCORE

0

NEW TAGS: RFL

4135791907

OTHER NEW TAGS:



STRAIGHT CARAPACE-LENGTH: 67.3

67.4

WIDTH:

55.7

NOTCH LENGTH: 55.7

DB:

L.O.

VB:

L.C.

CURVED CARAPACE LENGTH: 72.5

64.5

HEAD WIDTH: 9.6

SEX: MALE, FEMALE OR UNDETERMINED

U

PPS: YES OR NO OR NE

Yes

TAIL LENGTH: T

C

RIGHT FRONT FLIPPER WIDTH:

SAMPLES COLLECTED:

PLASTRON LENGTH: 54.5

WEIGHT: 92 lbs.

DESCRIPTIVE REMARKS:

Left hind injury (cut & healed) femur bisected

Picture #14 scratches on pasteur of plastron

Ts = 36

Tc = 31

Tb = 30.0

100% flat

Moto Tool 52

web tool

REMOVED

CAPTURE DATE, LOCATION AND METHOD:

Kiholo Bay 7/6/00 Basking South Beach  
PERSON RECORDING DATA:

OLD TAGS: 407A307165 LH

1F71155D7E LFL

TUMOR SCORE

0

NEW TAGS: RFL

OTHER NEW TAGS:

8933 / 7782

3317

J632 RH

STRAIGHT CARAPACE-LENGTH: 71.7

71.7

WIDTH: 55.7

NOTCH LENGTH: 71.7

DB:

L.O.

VB:

L.C.

CURVED CARAPACE LENGTH: 77

77

WIDTH: 71

HEAD WIDTH: 10.6

SEX: MALE, FEMALE OR UNDETERMINED

U

PPS: YES OR NO OR NE

Yes

TAIL LENGTH: T

C

12.5

RIGHT FRONT FLIPPER WIDTH:

SAMPLES COLLECTED:

PLASTRON LENGTH: 59.2

WEIGHT: ~105 est.

DESCRIPTIVE REMARKS:

1 small crab under when picked up

Tc = 36

Tb = 30.7

Moto Tool 94

IF

42

7600  
7600

CAPTURE DATE, LOCATION AND METHOD:

Kiholo 7/6/00 Basking North Pond

PERSON RECORDING DATA:

OLD TAGS:

TUMOR SCORE

NEW TAGS: 41361A5534



OTHER NEW TAGS:

413518641E RH

STRAIGHT CARAPACE-LENGTH: 64.8

WIDTH: 53.2

NOTCH LENGTH: 64.8

L.O.

DB:

VB:

L.O.

CURVED CARAPACE LENGTH: 70.0

WIDTH: 65.5

HEAD WIDTH: 10.6

SEX: U

MALE, FEMALE OR UNDETERMINED

PPS: YES OR NO OR NE YES

TAIL LENGTH: T 14

C

RIGHT FRONT FLIPPER WIDTH:

SAMPLES COLLECTED:

PLASTRON LENGTH: 54.1

WEIGHT: 894

DESCRIPTIVE REMARKS:

Ts=37

Tb=28.0

L1Q 4.8

Tc=33

MotoTool 95

CAPTURE DATE, LOCATION AND METHOD:

PERSON RECORDING DATA:

OLD TAGS:

TUMOR SCORE

NEW TAGS: RFL

LFL

OTHER NEW TAGS:

STRAIGHT CARAPACE-LENGTH:

WIDTH:

NOTCH LENGTH:

DB:

L.O.

VB:

L.O.

CURVED CARAPACE LENGTH:

WIDTH:

HEAD WIDTH:

SEX:

MALE, FEMALE OR UNDETERMINED

PPS: YES OR NO OR NE

TAIL LENGTH: T

C

RIGHT FRONT FLIPPER WIDTH:

SAMPLES COLLECTED:

PLASTRON LENGTH:

WEIGHT:

DESCRIPTIVE REMARKS:

Aug. 2000

30

☀ R: 7:38am  
☁ S: 6:49pm  
🌙 S: 8:19pm

6 9 NOON 3 6 9

① CAPTURE DATE, LOCATION AND METHOD:

AUGUST 30, 2000 Keawa Nui, Big Island  
PERSON RECORDING DATA: Veronica Cummings Net

OLD TAGS: [ ] NEW TAG: 41356B1D16 LH  
TUMOR SCORE: 0 OTHER NEW TAGS: 41370D4961

STRAIGHT CARAPACE-LENGTH: 48.9 WIDTH: 37.4 L.C.  
NOTCH LENGTH: 48.8 DB: [ ] L.O. VB: [ ]  
CURVED CARAPACE LENGTH: 52.0 WIDTH: 44.0

HEAD WIDTH: 7.7 SEX: MALE, FEMALE OR UNDETERMINED U  
PPS: YES OR NO OR NE Y  
TAIL LENGTH: T 10.5 C 7.0

RIGHT FRONT FLIPPER WIDTH: 8.7 SAMPLES COLLECTED: Blood dot  
PLASTRON LENGTH: 39.6  
WEIGHT: 34

DESCRIPTIVE REMARKS:  
Red algae in mouth  
1.7 L10

② CAPTURE DATE, LOCATION AND METHOD:

August 30, 2000 Keawa Nui, Big Island  
PERSON RECORDING DATA: Veronica Cummings Net

OLD TAGS: LF 411F190769 NEW TAGS: RFL [ ] LFL [ ]  
TUMOR SCORE: 0 OTHER NEW TAGS: LF 1F27520167

STRAIGHT CARAPACE-LENGTH: 53.7 WIDTH: 41.4 L.C.  
NOTCH LENGTH: 53.7 DB: [ ] L.O. VB: [ ]  
CURVED CARAPACE LENGTH: 57.0 WIDTH: 50.0

HEAD WIDTH: 8.8 SEX: MALE, FEMALE OR UNDETERMINED U  
PPS: YES OR NO OR NE Y  
TAIL LENGTH: T 11.0 C 7.0

RIGHT FRONT FLIPPER WIDTH: 8.7 SAMPLES COLLECTED: Blood dot  
PLASTRON LENGTH: 43.9  
WEIGHT: 49

DESCRIPTIVE REMARKS:  
metal tags: LFF = N-894 Red algae in mouth  
RFF = N-893

44

3

CAPTURE DATE, LOCATION AND METHOD:

August 30, 2000 Keana Nui, Big Island Net  
PERSON RECORDING DATA: Veronica C.

OLD TAGS: ~~1116~~ X411C656741 NEW TAGS: RFL LFL  
1F273AUG7A OTHER NEW TAGS:  
TUMOR SCORE 0

STRAIGHT CARAPACE-LENGTH: 49.3 WIDTH: 39.3

NOTCH LENGTH: 49.1 DB: L.O. VB: L.C.

CURVED CARAPACE LENGTH: 52.0 WIDTH: 46.0

HEAD WIDTH: 8.1 SEX: MALE, FEMALE OR UNDETERMINED U

PPS: YES OR NO OR NE Y

TAIL LENGTH: T 10.5 C 7.0

RIGHT FRONT FLIPPER WIDTH: 8.5 SAMPLES COLLECTED: Blood dot

PLASTRON LENGTH: 41.2

WEIGHT: 38

DESCRIPTIVE REMARKS:  
Molting K-758 K-756  
top K-759 K-757

CAPTURE DATE, LOCATION AND METHOD:

08-30-00 Keana Nui, Big Island Net  
PERSON RECORDING DATA: CEM

OLD TAGS: H 41362C4C3F NEW TAGS: RFL LFL  
1F 415D3D1B4C OTHER NEW TAGS:  
TUMOR SCORE 0

STRAIGHT CARAPACE-LENGTH: 47.1 WIDTH: 37.2

NOTCH LENGTH: 47.6 DB: L.O. VB: L.C.

CURVED CARAPACE LENGTH: 50.0 WIDTH: 43.0

HEAD WIDTH: 7.5 SEX: MALE, FEMALE OR UNDETERMINED U

PPS: YES OR NO OR NE yes

TAIL LENGTH: T 10.5 C 7.0

RIGHT FRONT FLIPPER WIDTH: 8.2 SAMPLES COLLECTED: Blood dot

PLASTRON LENGTH: 37.9

WEIGHT: 29.0

DESCRIPTIVE REMARKS:  
4139  
4140

5

CAPTURE DATE, LOCATION AND METHOD:

08-30-00 Keawanui, Big Island Net

PERSON RECORDING DATA: CEM

OLD TAGS: LF 1F2ASS481A

NEW TAGS: RFL



4136034B00

TUNOR SCORE

TAGS:

STRAIGHT CARAPACE-LENGTH: 48.4

WIDTH: 37.4

NOTCH LENGTH: 48.4

DB: L.O.

VB: L.C

CURVED CARAPACE LENGTH: 52.0

WIDTH: 44.5

HEAD WIDTH: 8.2

SEX: MALE, FEMALE OR UNDETERMINED

4

PPS: YES OR NO OR NE

yes

TAIL LENGTH: T

11.0

C

RIGHT FRONT FLIPPER WIDTH: 8.5

SAMPLES COLLECTED

blood dot

PLASTRON LENGTH: 38.6

mouth sample

WEIGHT: 33.0

1.9 cc L/R

DESCRIPTIVE REMARKS:

Met RH J-844 RF J-841

LF J-842 LH J-843

6

CAPTURE DATE, LOCATION AND METHOD:

08-30-00 Keawanui, Big Island - Harbor Hand

PERSON RECORDING DATA: CEM

OLD TAGS: H 413571727B

NEW TAGS: RFL

RH

413533173E

LFL

TUNOR SCORE

OTHER NEW TAGS:

STRAIGHT CARAPACE-LENGTH: 55.8

WIDTH: 43.8

NOTCH LENGTH: 55.8

DB: L.O.

VB: L.C

CURVED CARAPACE LENGTH: 58.5

WIDTH: 52.0

HEAD WIDTH: 9.1

SEX: MALE, FEMALE OR UNDETERMINED

4

PPS: YES OR NO OR NE

yes

TAIL LENGTH: T

14.0

C

RIGHT FRONT FLIPPER WIDTH: 11.0

SAMPLES COLLECTED

blood def

PLASTRON LENGTH: 44.5

WEIGHT: 46.0

DESCRIPTIVE REMARKS:

Plastron a little flat

7) 55.0 on 6-30-88

SCL=55.7 on 6-30-88

CAPTURE DATE, LOCATION AND METHOD: [CAPTIVE]

PERSON RECORDING DATA: CEM

08-30-88 Ocellular, maina-  
pond, Hawaii, ~~Caro, Hager~~

OLD TAGS: NEW TAGS: LH

41361D3008

413C510957

TUMOR SCORE

OTHER NEW TAGS: RH

STRAIGHT CARAPACE-LENGTH: 80.4

WIDTH: 58.1

NOTCH LENGTH: 80.4

L.O. VB: L.C

CURVED CARAPACE LENGTH: 87.0

WIDTH: 73.0

HEAD WIDTH: 11.6

SEX: MALE, FEMALE OR UNDETERMINED

PPS: YES OR NO OR NE  YES

M

TAIL LENGTH: T 22.0

C 15.5

RIGHT FRONT FLIPPER WIDTH: 13.3

SAMPLES COLLECTED

PLASTRON LENGTH: 64.0

6 ~~X~~ blood dot

WEIGHT: 155.0

5.6 cc LIQ

DESCRIPTIVE REMARKS:

7 cc blood sample for hematology

metal tags (LIS) 10558  
RH 10559

by T.W.

48  
8

CAPTURE DATE, LOCATION AND METHOD:

08-30-88 Keawana'i, Big Island

PERSON RECORDING DATA: CEM

hand

413E3B7629

TUMOR SCORE

OTHER NEW TAGS: RH

STRAIGHT CARAPACE-LENGTH: 65.7

WIDTH: 49.9

NOTCH LENGTH: 65.7

L.O. VB: L.C

CURVED CARAPACE LENGTH: 71.0

WIDTH: 62.5

HEAD WIDTH: 10.1

SEX: MALE, FEMALE OR UNDETERMINED

PPS: YES OR NO OR NE  YES

U

TAIL LENGTH: T 14.0

C 9.5

RIGHT FRONT FLIPPER WIDTH: 12.3

SAMPLES COLLECTED

PLASTRON LENGTH: 53.8

43 LIQ

WEIGHT: 100.0

2 blood dot

DESCRIPTIVE REMARKS:



9

CAPTURE DATE, LOCATION AND METHOD:

08-30-00 Keawanui, Big Island Scoop

PERSON RECORDING DATA: CEM

OLD TAGS:

TUMOR SCORE

NEW TAG

413E090E77



OTHER NEW RH TAGS:

413575566E



STRAIGHT CARAPACE-LENGTH: 57.1

WIDTH: 43.9

NOTCH LENGTH: 56.9

DB:

L.O.

VB:

L.C

CURVED CARAPACE LENGTH: 60.5

WIDTH: 52.5

HEAD WIDTH: 8.5

SEX:

MALE, FEMALE OR UNDETERMINED

PPS: YES OR NO OR NE  YES

TAIL LENGTH: T 14.0

C

9.5

RIGHT FRONT FLIPPER WIDTH: 9.2

SAMPLES COLLECTED:

PLASTRON LENGTH: 45.0

3.0 cc LIQ

WEIGHT: 52.0

2 blood sample

DESCRIPTIVE REMARKS:

red filaments in mouth + sand in mouth

10

CAPTURE DATE, LOCATION AND METHOD:

08-03-00 Keawanui, Big Island Scoop

PERSON RECORDING DATA: CEM

OLD TAGS:

TUMOR SCORE

NEW TAGS:

41363A7F52



OTHER NEW RH TAGS:

500E176720



STRAIGHT CARAPACE-LENGTH: 41.9

WIDTH: 32.4

NOTCH LENGTH: 41.5

DB:

L.O.

VB:

L.C

CURVED CARAPACE LENGTH: 44.0

WIDTH: 38.0

HEAD WIDTH: 7.1

SEX:

MALE, FEMALE OR UNDETERMINED

PPS: YES OR NO OR NE  YES

TAIL LENGTH: T 8.5

C

6.0

RIGHT FRONT FLIPPER WIDTH: 7.3

SAMPLES COLLECTED:

PLASTRON LENGTH: 33.0

1.0 LIQ

WEIGHT: 21.0

2 blood dot

DESCRIPTIVE REMARKS:

red filaments in mouth + sand in mouth

11510

48  
12

CAPTURE DATE, LOCATION AND METHOD:

08-30-00 Keawanui, Big Island

PERSON RECORDING DATA: CEM

SCOOP

OLD TAGS: LF 9EDYAG6A4E

NEW TAGS: LH

5019773035



TUMOR SCORE

OTHER NEW TAGS:

STRAIGHT CARAPACE-LENGTH: 59.8

WIDTH: 46.1

NOTCH LENGTH: 59.8

DB:

L.O.

VB:

L.C.

CURVED CARAPACE LENGTH: 9.3

WIDTH: 63.0

WIDTH: 50.5

HEAD WIDTH: 9.3

SEX: MALE, FEMALE OR UNDETERMINED

PPS: YES OR NO OR NE

yes

TAIL LENGTH: T 13.5

C

9.0

RIGHT FRONT FLIPPER WIDTH: 10.7

SAMPLES COLLECTED:

PLASTRON LENGTH: 47.6

3.0 cc LIQ

2 blood dot

WEIGHT: 73.0

DESCRIPTIVE REMARKS:

R-97  
K-739  
R-98  
R-99

Slightly flat plastron

CAPTURE DATE, LOCATION AND METHOD:

08-03-00 Keawanui, Big Island

PERSON RECORDING DATA: CEM

SCOOP

OLD TAGS: LF 407D6D266Z

NEW TAGS: LH

500E0F3D6E

TUMOR SCORE

OTHER NEW TAGS:

STRAIGHT CARAPACE-LENGTH: 42.1

WIDTH: 34.5

NOTCH LENGTH: 41.9

DB:

L.O.

VB:

L.C.

CURVED CARAPACE LENGTH: 45.0

WIDTH: 39.5

HEAD WIDTH: 7.3

SEX: MALE, FEMALE OR UNDETERMINED

PPS: YES OR NO OR NE

yes

TAIL LENGTH: T 10.0

C

6.0

RIGHT FRONT FLIPPER WIDTH: 7.1

SAMPLES COLLECTED:

PLASTRON LENGTH: 34.3

1.0 LIQ

2 blood dots

WEIGHT: 23

DESCRIPTIVE REMARKS:

met: V-712  
tags:

8 white pin-point bumps dorsal  
soft pallet.

(13)

CAPTURE DATE, LOCATION AND METHOD:

08-30-00 Keawanui, Big Island scoop

PERSON RECORDING DATA: CEM

OLD TAGS: 22115B5268

NEW TAGS: 502E627438



TUMOR SCORE

OTHER NEW TAGS:

STRAIGHT CARAPACE-LENGTH: 42.9

WIDTH: 33.4

NOTCH LENGTH: 42.6

L.O.

DB:

VB:

L.C.

CURVED CARAPACE LENGTH: 46.0

WIDTH: 39.5

HEAD WIDTH: 7.2

SEX: MALE, FEMALE OR UNDETERMINED

4

PPS: YES OR NO OR NE

yes

TAIL LENGTH: T 10.0

C

7.0

RIGHT FRONT FLIPPER WIDTH: 7.2

SAMPLES COLLECTED

PLASTRON LENGTH: 34.1

1.0 UQ

2 blood dots

WEIGHT: 23.0

DESCRIPTIVE REMARKS:

Metal: 0-576  
Tags: (R2-3) 11048

(14)

CAPTURE DATE, LOCATION AND METHOD:

08-30-00 Keawanui, Big Island scoop

PERSON RECORDING DATA: CEM

OLD TAGS: 41351E5630

NEW TAGS: RFL

RH 4136104459

LFL

TUMOR SCORE

OTHER NEW TAGS:

STRAIGHT CARAPACE-LENGTH: 48.2

WIDTH: 36.5

NOTCH LENGTH: 48.0

DB:

L.O.

VB:

L.C.

CURVED CARAPACE LENGTH: 51.0

WIDTH: 43.0

HEAD WIDTH: 8.5

SEX: MALE, FEMALE OR UNDETERMINED

4

PPS: YES OR NO OR NE

yes

TAIL LENGTH: T 10.0

C

6.5

RIGHT FRONT FLIPPER WIDTH: 7.7

SAMPLES COLLECTED

PLASTRON LENGTH: 37.4

2 blood dots

WEIGHT: 31.0

DESCRIPTIVE REMARKS:

END

1

M. Rice  
pictures - 2462, 2463

CAPTURE DATE, LOCATION AND METHOD: Balazs, 20, 21 digital

10-30-00 Kalko-1000 Net

PERSON RECORDING DATA: Katie Kerec

OLD TAGS: [ ] [ ] [ ]  
NEW TAGS: RHF 500E3F7976  
TUMOR SCORE: 0  
OTHER NEW TAGS: [ ] [ ] [ ]

STRAIGHT CARAPACE-LENGTH: 57.3 WIDTH: 44.1

NOTCH LENGTH: 57.3 DB: [ ] L.O. VB: L.C

CURVED CARAPACE LENGTH: 62 WIDTH: 52

HEAD WIDTH: 9.2

PPS: YES OR NO OR NE Y SEX: MALE, FEMALE OR UNDETERMINED U

TAIL LENGTH: T 12.5 C 8.5

RIGHT FRONT FLIPPER WIDTH: 10.3 SAMPLES COLLECTED: [ ]

PLASTRON LENGTH: 45.2

WEIGHT: 54.6g

DESCRIPTIVE REMARKS: T.W. blood culture, plastron little flat, molted white horizontal line, 2nd lateral left bright blood dots, oral swab, mouth sample collected 21.2 axial depth 20.6 lateral depth 3cc big

50

M. Rice  
pictures - 2451, 2450

CAPTURE DATE, LOCATION AND METHOD: Scoop Net

10/30/00 Kalko-Kanokohau

PERSON RECORDING DATA: Katie

OLD TAGS: RHF-4135780476  
NEW TAGS: RFL [ ] LFL [ ]  
TUMOR SCORE: 0  
OTHER NEW TAGS: [ ] [ ] [ ]

STRAIGHT CARAPACE-LENGTH: 62.9 WIDTH: 46.9

NOTCH LENGTH: 62.4 DB: [ ] L.O. VB: L.C

CURVED CARAPACE LENGTH: 68 WIDTH: 61

HEAD WIDTH: 9.5

PPS: YES OR NO OR NE N SEX: MALE, FEMALE OR UNDETERMINED [ ]

TAIL LENGTH: T 14.5 C 10.5

RIGHT FRONT FLIPPER WIDTH: [ ] SAMPLES COLLECTED: [ ]

PLASTRON LENGTH: 49.6

WEIGHT: 74.16g

DESCRIPTIVE REMARKS: 3rd lateral left, healed 8mm hole to bone T.W. blood culture, 3 foci of hyperemia - oral molted white horizontal line, 2nd lateral left bright

3 Pictures: M. Rice 2464, 2465

CAPTURE DATE, LOCATION AND METHOD: Balazs's 22, 23

10/30/00 Kaloko-Honokohau Scoop Net

PERSON RECORDING DATA: Katie

500F224E41

OLD TAGS:

NEW TAGS: LHF

TUMOR SCORE

0

OTHER NEW TAGS: RHF

500E074042

STRAIGHT CARAPACE-LENGTH: 61.3

WIDTH: 48.0

NOTCH LENGTH: 61.3

DB: [ ]

L.O. [ ]

VB: [ ]

L.C. [ ]

CURVED CARAPACE LENGTH: 66

WIDTH: 59

HEAD WIDTH: 9.6

SEX: [ ]

MALE, FEMALE OR UNDETERMINED

PPS: YES OR NO OR NE [ ]

Y

TAIL LENGTH: T [ ]

3

C

8.5

RIGHT FRONT FLIPPER WIDTH: [ ]

SAMPLES COLLECTED: [ ]

PLASTRON LENGTH: 49.8

WEIGHT: 68 lbs

DESCRIPTIVE REMARKS:

TW: blood culture, shallow scutes to carapace. mototooled white horizontal line, 2nd lateral left & right

blood dots, oral swab

24.0 axial depth

23.2 lateral depth

4 foci of hyperemia - oval

3.6 cc liq.

4 Pictures: M. Rice 2460, 2461

CAPTURE DATE, LOCATION AND METHOD: Balazs's 12, 13

10/30/00 Kaloko-Honokohau Scoop Net

PERSON RECORDING DATA: Katie

50194B714F

OLD TAGS:

NEW TAGS: LHF

TUMOR SCORE

0

OTHER NEW TAGS: RHF

500E190766

STRAIGHT CARAPACE-LENGTH: 56.2

WIDTH: 43.9

NOTCH LENGTH: 55.9

DB: [ ]

L.O. [ ]

VB: [ ]

L.C. [ ]

CURVED CARAPACE LENGTH: 60

WIDTH: 54.5

HEAD WIDTH: 9.1

SEX: [ ]

MALE, FEMALE OR UNDETERMINED

PPS: YES OR NO OR NE [ ]

Y

TAIL LENGTH: T [ ]

12

C

9.5

RIGHT FRONT FLIPPER WIDTH: [ ]

SAMPLES COLLECTED: [ ]

PLASTRON LENGTH: 44.6

WEIGHT: 55 lbs

DESCRIPTIVE REMARKS:

TW: blood culture. mototooled white horizontal line, 2nd lateral left & right blood dots, oral swab, mouth sample collected. 3.0 cc liq. 9 small foci of hyperemia - oval.

20.5 - lateral depth, seam between 2nd & 3rd central

20.5 axial depth 3rd seam, posterior margin

M. Rice

5 pictures: 2454, 2455

CAPTURE DATE, LOCATION AND METHOD: Balazss 18, 19

10/30/00 Kaloko-Honokohau. Scoop Net.

PERSON RECORDING DATA: Katie

OLD TAGS:

NEW TAGS:  LHF **5019157673**

TUMOR SCORE:  0

OTHER NEW TAGS:  RHF **502F033673**

STRAIGHT CARAPACE-LENGTH:  59.7  WIDTH:  48.1  L.C.

NOTCH LENGTH:  58.9  DB:  L.O.  VB:  L.C.

CURVED CARAPACE LENGTH:  64  WIDTH:  57.5

HEAD WIDTH:  9.5  SEX: MALE, FEMALE OR UNDETERMINED

PPS: YES OR NO OR NE  Y  C

TAIL LENGTH: T  13  C  9

RIGHT FRONT FLIPPER WIDTH:  SAMPLES COLLECTED:

PLASTRON LENGTH:  48.1

WEIGHT:  65 lbs

DESCRIPTIVE REMARKS:  
 TW blood culture, plastron little flat.  
 1st lateral right-healing scar - 15cm  
 mortooled white horizontal line  
 2nd lateral left right 3CC Lig.  
 blood dots, oral swab  
 2- axial depth 5 instead of 10, mouth sample collected  
 2- lateral with 2 fecal at liver area

M. Rice

6 pictures 2466, 2467

CAPTURE DATE, LOCATION AND METHOD: Balazss pic. 10, 11

10/30/00 Kaloko-Honokohau. Scoop Net.

PERSON RECORDING DATA: Katie

OLD TAGS:  RHF 9119484516  NEW TAGS: REL

TUMOR SCORE:  0  OTHER NEW TAGS:  LHF 4108450819 - Kaloko LFL

STRAIGHT CARAPACE-LENGTH:  62.6  WIDTH:  50.5

NOTCH LENGTH:  61.7  DB:  L.O.  VB:  L.C.

CURVED CARAPACE LENGTH:  67  WIDTH:  60

HEAD WIDTH:  9.9  SEX: MALE, FEMALE OR UNDETERMINED

PPS: YES OR NO OR NE  Y  C

TAIL LENGTH: T  13.5  C  9.5

RIGHT FRONT FLIPPER WIDTH:  10.7  SAMPLES COLLECTED:

PLASTRON LENGTH:  50.0

WEIGHT:  76 lbs

DESCRIPTIVE REMARKS:  
 Heavy algal growth on carapace  
 TW blood culture  
 mortooled white horizontal line 2nd lateral left right  
 blood dots, oral swab

51

6

Mr. Rice  
pictures: 2473, 2474 Balazs's  
16/17

10/30/00 - Kaloko-Honokohau  
Scoop Net  
PERSON RECORDING DATA: Katie

NEW TAGS: 500F2B3557  
LHF  
OTHER NEW TAGS: 500E11668  
RHF  
TUMOR SCORE: 0

STRAIGHT CARAPACE-LENGTH: 52.5 WIDTH: 40.9  
NOTCH LENGTH: 52.5 DB: L.O. VB: L.C.  
CURVED CARAPACE LENGTH: 57 WIDTH: 51

HEAD WIDTH: 8.7 SEX: MALE, FEMALE OR UNDETERMINED  
PPS: YES OR NO OR NE Y  
TAIL LENGTH: T 11 C 7.5

RIGHT FRONT FLIPPER WIDTH: SAMPLES COLLECTED  
PLASTRON LENGTH: 43.1  
WEIGHT: 47 lbs.

DESCRIPTIVE REMARKS:  
TW blood culture  
photo tooked white horizontal line, 2nd lateral left  
blood dots, oral swab.  
2.3 cc Liq.

axial depth 21.6 cm  
lateral depth 20.9 cm  
plastron little flat

Mr. Rice  
pictures: 2468, 2469, 2478  
8

10/30/00 - Kaloko-Honokohau  
Scoop Net  
PERSON RECORDING DATA: Katie

OLD TAGS: 41357B1D7A NEW TAGS: RFL  
LHF 413E3B3838 Kawanui LFL  
OTHER NEW TAGS:  
TUMOR SCORE: 0

STRAIGHT CARAPACE-LENGTH: 54.2 WIDTH: 41.9  
NOTCH LENGTH: 54.1 DB: L.O. VB: L.C.  
CURVED CARAPACE LENGTH: 58 WIDTH: 49.5

HEAD WIDTH: 9.0 SEX: MALE, FEMALE OR UNDETERMINED  
PPS: YES OR NO OR NE Y  
TAIL LENGTH: T 13.5 C 9.5

RIGHT FRONT FLIPPER WIDTH: SAMPLES COLLECTED  
PLASTRON LENGTH: 43.2  
WEIGHT: 45 lbs.

DESCRIPTIVE REMARKS:  
TW blood culture  
interacted white horizontal line, 2nd lateral left  
blood dots, oral swab, mouth sample collected.

Balazs's pictures: 6, 7

Pictures: 2452, 2453

CAPTURE DATE, LOCATION AND METHOD:

10/30/00 Kaloko-Honokohau Scoop net

PERSON RECORDING DATA: Katie

OLD TAGS:

NEW TAGS: RFL

TUMOR SCORE

LFL

OTHER NEW TAGS:

OTHER NEW TAGS:

0 RHF 41371F 2904

LHF 41352D 7D66 - Kaloko

STRAIGHT CARAPACE-LENGTH: 60.5

WIDTH: 45.5

NOTCH LENGTH: 60.4

L.O.

VB: L.C

CURVED CARAPACE LENGTH: 64.5

WIDTH: 56.0

HEAD WIDTH: 9.7

SEX:

MALE, FEMALE OR UNDETERMINED

PPS: YES OR NO OR NE

Y

TAIL LENGTH: T

16

C

RIGHT FRONT FLIPPER WIDTH:

SAMPLES COLLECTED:

PLASTRON LENGTH: 47.9

WEIGHT: 71 lbs.

DESCRIPTIVE REMARKS:

Heavy algal growth, green filamentous

Two blood culture. 1<sup>st</sup> on carapace. 2<sup>nd</sup> on 2<sup>nd</sup> lateral left right

5 small foci of hyperemia, faint - ORAL.

blood dots, oral swab, mouth sample collected

Mr Rice pictures: 2458, 2459

CAPTURE DATE, LOCATION AND METHOD: Balazs =

10/30/00 Kaloko-Honokohau Scoop net

PERSON RECORDING DATA: Katie

OLD TAGS:

NEW TAGS: RFL

LFL

TUMOR SCORE

OTHER NEW TAGS:

0 RHF 413D7B32F

LHF 413679723F

Kaloko

OTHER NEW TAGS:

STRAIGHT CARAPACE-LENGTH: 51.0

WIDTH: 43.6

NOTCH LENGTH: 50.8

DB:

L.O.

VB: L.C

CURVED CARAPACE LENGTH: 55

WIDTH: 51

HEAD WIDTH: 8.6

SEX:

MALE, FEMALE OR UNDETERMINED

PPS: YES OR NO OR NE

Y

TAIL LENGTH: T

11

C

RIGHT FRONT FLIPPER WIDTH:

SAMPLES COLLECTED:

PLASTRON LENGTH: 43.3

WEIGHT: 51 lbs.

DESCRIPTIVE REMARKS:

Two blood culture

metatooled white horizontal line, 2<sup>nd</sup> lateral left & right

two small foci of hyperemia, faint - ORAL.

blood dots, oral swab

54

10



11 M. Rive  
pictures 2477

Bala255

CAPTURE DATE, LOCATION AND METHOD:

10/30/00 Kaloko-Honokohau Sloop net  
PERSON RECORDING DATA: Katie

OLD TAGS: RHF 40615ASEF NEW TAGS: RFL

LHF 410C260B53 Kaloko LFL

TUMOR SCORE

0

OTHER NEW TAGS:

STRAIGHT CARAPACE-LENGTH: 47.8

WIDTH: 38

NOTCH LENGTH: 47.7

DB:

L.O.

VB:

L.C.

CURVED CARAPACE LENGTH: 50.8

WIDTH: 45

HEAD WIDTH: 8.0

SEX: MALE, FEMALE OR UNDETERMINED

PPS: YES OR NO OR NE Y

TAIL LENGTH: T 10.5

C

RIGHT FRONT FLIPPER WIDTH:

SAMPLES COLLECTED:

PLASTRON LENGTH: 38.6

WEIGHT: 39 lbs

DESCRIPTIVE REMARKS:

nototooled white horizontal line, 2nd lateral left  
blood dots, oral swab  
right

> 115 PM

Bala255 pic, D2-1, 2 M Ace 112  
CAPTURE DATE, LOCATION AND METHOD: 2484, 2485, 2486

10/30/00 Kaloko-Honokohau Sloop net  
PERSON RECORDING DATA: Katie

NEW TAGS:

LHF

TUMOR SCORE

0

OTHER NEW TAGS:

413608415B



500E456164



STRAIGHT CARAPACE-LENGTH: 58.4

WIDTH: 42.6

NOTCH LENGTH: 58.2

DB:

L.O.

VB:

L.C.

CURVED CARAPACE LENGTH: 62.5

WIDTH: 52.5

HEAD WIDTH: 9.7

SEX: MALE, FEMALE OR UNDETERMINED

PPS: YES OR NO OR NE Y

TAIL LENGTH: T 14

C

RIGHT FRONT FLIPPER WIDTH:

SAMPLES COLLECTED:

PLASTRON LENGTH: 45.4

WEIGHT: 57 lbs

DESCRIPTIVE REMARKS:

nototooled white horizontal line, 2nd lateral  
3cc Lig.  
blood dots, oral swab  
left & right

21.8 axial depth  
21.9 lateral depth

~~MAN~~ M. RIFE

DJ- Balazs pic. 8, 9.

13 2491, 2492

CAPTURE DATE, LOCATION AND METHOD:

10/30/00 Kaloko-Honokohau Scoop net.

PERSON RECORDING DATA: Katie

OLD TAGS: \_\_\_\_\_

NEW TAGS: LHF 41357F0243

TUMOR SCORE: 0

OTHER NEW TAGS: RHF 41356E4C2A

STRAIGHT CARAPACE-LENGTH: 56.3 WIDTH: 42.3

NOTCH LENGTH: 56.3 DB: \_\_\_\_\_ L.O. \_\_\_\_\_ VB: \_\_\_\_\_ L.C. \_\_\_\_\_

CURVED CARAPACE LENGTH: 60.5 WIDTH: 51.2

HEAD WIDTH: 9.1

PPS: YES OR NO OR NE Y

TAIL LENGTH: T 11.5 C 7.5

RIGHT FRONT FLIPPER WIDTH: \_\_\_\_\_ SAMPLES COLLECTED: \_\_\_\_\_

PLASTRON LENGTH: 46

WEIGHT: 52 lbs.

DESCRIPTIVE REMARKS: mototooled white horizontal line, 2nd lateral left  
blood dots. 3cc Lig.  
21.7 axial depth  
21.2 lateral depth

M. RIFE 2489, 2490

Balazs'5-D2 3, 4

CAPTURE DATE, LOCATION AND METHOD:

10/30/00 Kaloko-Honokohau Scoop net

PERSON RECORDING DATA: Katie

OLD TAGS: RHF 41352D3D NEW TAGS: RFL \_\_\_\_\_

LHF 407A2CSA00 Ka 10/ko LFL \_\_\_\_\_

TUMOR SCORE: 0

OTHER NEW TAGS: \_\_\_\_\_

STRAIGHT CARAPACE-LENGTH: 64.4 WIDTH: 50.3

NOTCH LENGTH: 64.4 DB: \_\_\_\_\_ L.O. \_\_\_\_\_ VB: \_\_\_\_\_ L.C. \_\_\_\_\_

CURVED CARAPACE LENGTH: 69 WIDTH: 64.5

HEAD WIDTH: 9.5

PPS: YES OR NO OR NE Y

TAIL LENGTH: T 15 C 11

RIGHT FRONT FLIPPER WIDTH: \_\_\_\_\_ SAMPLES COLLECTED: \_\_\_\_\_

PLASTRON LENGTH: 52.1

WEIGHT: 83 lbs.

DESCRIPTIVE REMARKS: mototooled white horizontal line, 2nd lateral left  
deep healed notch in 9th marginal, severe right  
blood dots  
24.6 axial depth  
24.1 lateral depth

14 57 6

(B) 15 10/30/00 Kaloko-Hanokohau Scoop net  
 CAPTURE DATE, LOCATION AND METHOD: 10/30/00 Kaloko-Hanokohau Scoop net  
 PERSON RECORDING DATA: Katie

capture date: 9/23 ✓ location and method of capture: hand Baiting 2040 hrs Kuno  
 recorder: Ria

OLD TAGS: \_\_\_\_\_  
 TUMOR SCORE: 0  
 NEW TAGS: 5019462024  
 OTHER NEW TAGS: RHF  
 PIT tag bar code: 410C10D15 ✓  
4103784466 ✓

STRAIGHT CARAPACE-LENGTH: 57.9 WIDTH: 45.6  
 NOTCH LENGTH: 57.2 DB: \_\_\_\_\_ L.O.: \_\_\_\_\_ VB: \_\_\_\_\_ L.C: \_\_\_\_\_  
 CURVED CARAPACE LENGTH: 62 WIDTH: 55

HEAD WIDTH: 9.1 SEX: \_\_\_\_\_ MALE, FEMALE OR UNDETERMINED  
 PPS: YES OR NO OR NE Y

TAIL LENGTH: T 11.5 C 7.5 SAMPLES COLLECTED: \_\_\_\_\_  
 RIGHT FRONT FLIPPER WIDTH: \_\_\_\_\_

PLASTRON LENGTH: 46.5  
 WEIGHT: 55 lbs.

DESCRIPTIVE REMARKS:  
photographed white horizontal line, 2nd lateral / left  
blood dots. 3cc. Lig.  
22.7 - lateral depth  
5 foci of hyperemia - ORAL

(2)

straight carapace length: \_\_\_\_\_ cm.  
 notch: \_\_\_\_\_ cm.  
 straight carapace width: \_\_\_\_\_ cm.  
 curved carapace length: 50.7 cm.  
 curved width: \_\_\_\_\_ cm.  
 head width: \_\_\_\_\_ cm.  
 tail length: \_\_\_\_\_ cm.  
 weight: 36 lbs.

other new tags: \_\_\_\_\_  
 sex: \_\_\_\_\_ male female unknown  
 cloaca: \_\_\_\_\_ cm.

total: \_\_\_\_\_ cm.  
 PPS: YES NO \_\_\_\_\_  
 right front flipper: \_\_\_\_\_ cm.  
 plastron: \_\_\_\_\_ cm.

descriptive remarks:  
Ts = 24  
Tc = 26  
Tb = 28.6  
Te =  
96-MT  
side picture 2290  
side picture 2292

From p. 37  
 Co to p. 69

(57)



1L Kaloko\_103000 1R Kaloko\_103000

PERFECT eyes! Look at that smooth connective tissue. No warping or hint of white veining.



2L Kaloko\_103000 2R Kaloko\_103000

Date: Wed, 01 NOV 2000 20:00:20  
From: Ursula Keuper-Bennett <howzit@turtles.org>  
To: George Balazs <George.Balazs@noaa.gov>

Right eye fine (that's just a fleck of sand on the connective tissue)

Left eye. If it were Honokowai I'd make note of that lightening working through the connective tissue. And mark it as "suspicious".



3L Kaloko\_103000 3R Kaloko\_103000

Interesting one.

Right eye passes. Beautiful flawless connective tissue.

But left shows lumping or something posterior near corner of the eye. So I magnified it (third image). It doesn't help, but it does bring out the lumps more.

Don't know what I'm looking at. Doesn't look like FP coming in. And doesn't look like it going out. The angle needed to be 90% to the connective tissue so I'm unable to assess.

Would put left eye as "suspicious".

(Note, we have one excellent example this summer or an asymptomatic left eye and the turtle's right has two very tiny tumours in the right. So we know a turtle can have a good eye and the other bad.)

Forget the right eye. A washout. Sun or flash killed it.

Left eye? not much better. Out of focus. Still no lump or anything. But there's lightening happening. I just can't tell whether that's in the connective tissue or the result of the flash.

Pau.

Mahalo for these images. All of them. I love working this stuff. Reinforces what we see at Honokowai. What we regarded as "normal" indeed was.

Not as of right now we (Peter and me) have 281 eye video images for just Summer 2000. This doesn't include PHOTOGRAPHS. And doesn't include other years. I am memorizing eyes. And what's interesting is what I DON'T SEE in the eyes you provide!

It's what I DON'T SEE that's normal!



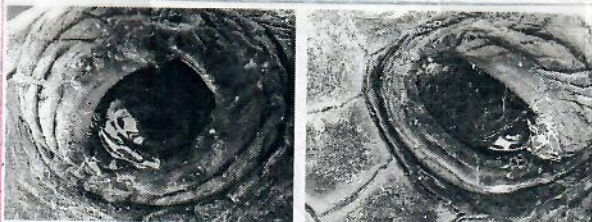
4L Kaloko\_103000

4R Kaloko\_103000

Left eye looks fine.

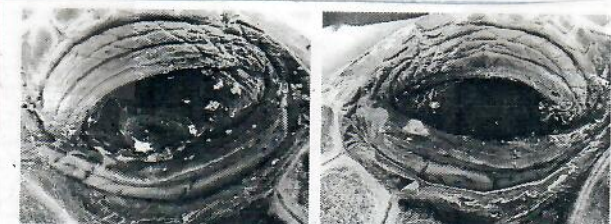
Right connective tissue looks fine except at the very back near the corner --it's white. But that could be that stuff honu slough all the time. It could be a function of the lighting. Seeing that the rest of the connective tissue looks flat and smooth, this honu is likely ok.

Still, I'd document that there was white posterior right eye. But nothing threatening to be a lump.



5L Kaloko\_103000

5R Kaloko\_103000



6L Kaloko\_103000

6R Kaloko\_103000

Right eye fine.

Left eye, not normal. I don't know what it is, but it's not normal. I'm not talking about those white pieces of sand either. That connective tissue is swollen. Is it tumour precursor? Unlikely. There isn't a strong enough white to this. Too uniform.

But remember how we speculated that some FP might be very mild? Just a "sniffle"? Well this is what I would expect it to look like. No lump.

I'd want a closer look at this eye though. Underwater!



7L Kaloko\_103000

7R Kaloko\_103000

Left eye. What's wrong with it? There isn't a "corner" --it's not almond shaped but looks like something's grown over it or something. Actual connective tissue on the eyeball can't be "defined" sharpened no matter what I try.

out of focus or something. Still connective tissue is dark with no lightening threatening.

Right eye. There's white near the back. It's not a place I normally see tumours erupt but it doesn't matter. I don't like it. I'd call this honu eye "suspicious" I'd want a closer look at that one.

(60)

- Throughout morning, got caught in net at bridge.
- No baskers reported recently,

- 8 Turtles tattoo band on forearm
- + Turtle on upper leg w/ "Track" marks

Partner  
- Per's

Reve

MS. Tennille Howard  
11-B Puako Beach Drive  
Kamuela, HI 96743

(sent)

Turtle pictures

Tennille HOWARD  
11-B PUAKO BEACH DR.  
KAMUELA, HI 96743