

Molokai

BALAZS  
808-286-2899  
395-6409

2002-2003

BALAZS

MOLOKAI 11-14 NOVEMBER 02 PALAU  
27-28 JANUARY 03 - PALAU  
25-27 AUGUST 03 - PALAU  
MIKE HOLMES  
SUORKEZ

# G. H. BALAZS

12-14 November 2002 PALAAN

11-12-02 DAY 1	11 TOTAL	2 Tumored (1-TS1 1-TS2)	1 Recovery (PITS) (NON-Tumored)
11-13-02 DAY 2	12 TOTAL	2 Tumored (1-TS1 1-TS2)	1 Recovery (PIT) (NON-Tumored) <small>Flipper PAGS</small>
11-14-02 DAY 3	7 TOTAL	2 Tumored (2-TS1)	1 Recovery (PIT) (NON-Tumored)
<hr/>			
30 TOTAL =		20%	10%

27-28 JANUARY 2003 PALAAN page = 28-41

1-27 DAY 1 11 TOTAL

1-28 DAY 2

4 TOTAL

---

15 TOTAL (1 Recovery; 4 Tumored)  
<sup>7.5%</sup>  
all new  
27% Tumored But Low N  
+ Cases are most low severity

Glucose  
Summary = p. 32

Monday Tuesday  
25-26

AUGUST 2003

2 captures -  
1 new, 1 Recap  
none (netted) turned.  
2 DATA pages: 108-109

Narrative p. 47 -

CAPTAIN

EMAIL: oceanman@mobetta.net

MIKE HOLMES

P.O. Box 424, HOOLEHUA

Hogs Sportfishing"

Molokai, HI 96729

www.molokai-rentals.com

Funhogs

TEL. (808)

8) "AHI"

576-6789



**HOTEL MOLOKAI**

Presented by

Castle Resorts & Hotels For Reservations (800) 367-5664 or (808) 591-2235

**JANIS A. DELA CRUZ**

Front Office Manager

Kamehameha V Highway  
Kaunakakai, Molokai, HI 96748

Mailing Address:

P.O. Box 1020  
Kaunakakai, Molokai, HI 96748

Phone: (808) 553-5347

Fax: (808) 553-5047

www.hotelmolokai.com

Ellis  
Jessica

JANIS

### Molokai Air Shuttle

99 Mokuëa Place  
Honolulu, Hawaii 96819

Res: Oahu (808)545-4988 Res: Molokai (808)567-6847

# GPS of Bullpen Sets

DAY 1 & 2 - (2105.561 N  
15707.128 W

Day 3 (100YARD  
west of Seguno) (2105.480 N  
15706.115 W

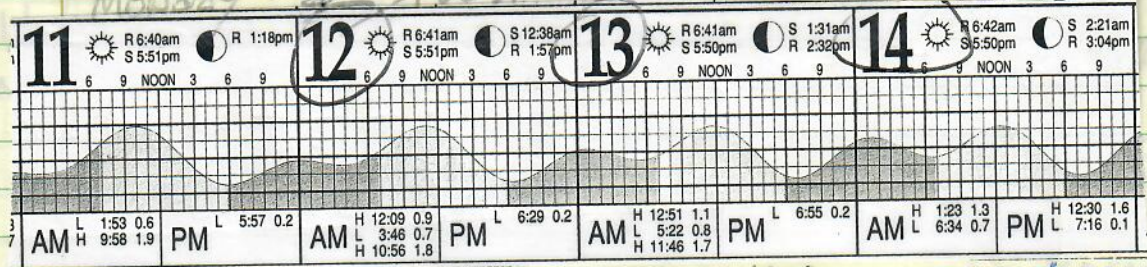
1/1 Miles east of Day 1 & 2

C<sup>o</sup> Seguneta at Bullpen  
on the bottom  
Pickup Days 1, 2 & 3 (Actual)

11/12/02 11:32	25.98
11/12/02 13:32	26.16
11/12/02 15:32	26.34
11/12/02 17:32	25.98
11/12/02 19:32	25.63
11/12/02 21:32	25.81
11/12/02 23:32	25.63
11/13/02 1:32	25.46
11/13/02 3:32	25.28
11/13/02 5:32	24.93
11/13/02 7:32	25.11
11/13/02 9:32	25.46
11/13/02 11:32	25.28
11/13/02 13:32	26.16
11/13/02 15:32	26.87
11/13/02 17:32	26.69
11/13/02 19:32	26.34
11/13/02 21:32	25.81
11/13/02 23:32	25.63
11/14/02 1:32	25.63
11/14/02 3:32	25.46
11/14/02 5:32	25.11
11/14/02 7:32	24.76
11/14/02 9:32	25.11
11/14/02 11:32	25.11

November 2002

Monday DAY 1 DAY 2 DAY 3  
Tues Wed Thurs



11 TURTLES

12 TURTLES

7 TURTLES

3 DAY TOTAL = 30

**STEVE SCHONELY**

Molokai

**Island  
KINE**



**AUTO RENTAL**

Cell: 658-0210

[cars@molokai-aloa.com](mailto:cars@molokai-aloa.com)

P.O. Box 1018

Kaunakakai, HI 96748

phone -808.553.5242

Fax -808.553.3880

[molokai-aloa.com/cars](http://molokai-aloa.com/cars)

4

Date: Mon, 11 Nov 2002 17:02:11 EST  
From: Casaplaya@aol.com  
To: gbalazs@honlab.nmfs.hawaii.edu  
Subject: Re: Monday, Tuesday,  
Wednesday and Thursday days and nights of this week.

Hi George,

your message reminded me to tell you about something. We were on Molokai last weekend for an archaeology field trip and down at the beach at Halawa valley a couple of the students found 3 hatchling green turtles (dead) -- I assumed a nest there would probably not be news to you, but just in case, I thought I should tell you about it -- we looked about for evidence of a nest, but didn't find anything. I did take pictures of the three.

Have a good time,  
Regina

HALAWA  
HATCHINGS  
See p. 7

# PALAU, MOLOKAI

11/11/02 Depart ~ 40 pm ISLAND AIR FL.  
 Monday Above. Masc Rice and students will meet  
 me on Molokai. Ed Medeiros to set  
 fullpen today at PALAU. Rooms 131.  
 Hotel Molokai reservations #68 night RM 199  
 Dinner w/ Rice at Hotel Molokai  
 Restaurant, Jennifer Muscovat, Jill and  
 Nick Quamance

11/12/02 pick up Day 1 - net is  
 Tues. 3-4 "harbors" to west. Taken  
 to renovated and repaired "house" on  
 reef said by Darts "Baby Fish"  
 catamaran boat - twice 705.

2 men  
 fish  
 collectors  
 oahu.  
 collected  
 biopsy  
 for  
 AYL A

Ed drove to Halawa. Store brought  
 back to backyard from up  
 Tomoeatia tree. No sight of  
 housebird nesting or emergence seen.  
 However, last Saturday Regina Lutz  
~~was~~ found along w/ hatchlings -  
 see taped email messages.

11/13/02 pick up Day 2, net again.  
 Wednesday at 630 am at pier.  
 Bakery open today for breakfast.  
 Not moved to pier yet after  
 getting turtles fish  
 by Evanes and Ed boat overtuned Halawa  
 Darts helped them.

15  
 12  
 11  
 10  
 9  
 8  
 7  
 6  
 5  
 4  
 3  
 2  
 1  
 0  
 11/14/02

Thursday pick up Day 3. 630am  
 Picked up net - Ed brought it back -  
 Mars and I and students in Darts boat.

<sup>6</sup>  
11/14/02  
Thursday

I left on a 225pm Island  
Air flight  
for Honolulu.



see p. 4

Photo by Regina Luna Helwa - Dried dead,



RECAPTURES FROM PALAU, MOLOKAI

11/2-11/14/02

30 captures 1070  
3 recoveries 2070  
6 w/TTM

Reduce to  
McGowan  
book

- Piled
- ED
- Done
- DWT
- MASC
- J11

Historical Information for Turtle Tag 351A355D  
George H. Balazs  
Marine Turtle Research Program  
National Marine Fisheries Service  
2570 Dole Street  
Honolulu, Hawaii 96822-2396

Tag Information:

Tag Number	Date	Tag Type	Tag Position
351A355D	7/9/99	PIT	LHF
36355F79	7/9/99	PIT	RHF

Date	Type of Encounter	Location	Turn/Rank	Nesting Act	Straight Carapace	Since Last Encounter			Overall				
						Interval	Year	Growth-Rates	Interval	Year	Growth-Rates		
7/9/99	Near Shore	Molokai, Palau D, Slightly east of Pakanaka	2		59.1	...	...	...	...	...	...		
11/12/02	Near Shore	Molokai, Palau	0		66.6	40.0	3.3	0.2	2.3	40.0	3.3	0.2	2.3

Historical Information for Turtle Tag Y974

George H. Balazs  
Marine Turtle Research Program  
National Marine Fisheries Service  
2570 Dole Street  
Honolulu, Hawaii 96822-2396

Tag Information:

Tag Number	Date	Tag Type	Tag Position
44131E5D0E	11/13/02	PIT	LHF
44132B0252	11/13/02	PIT	RHF
Y974	7/9/90	I681	F
Z129	7/9/90	R	

Date	Type of Encounter	Location	Turn/Rank	Carapace	Since Last Encounter			Overall				
					Interval	Year	Growth-Rates	Interval	Year	Growth-Rates		
7/9/90	Near Shore	Molokai, Palau F	...	...	...	...	...	...	...	...	...	
11/13/02	Near Shore	Molokai, Palau	...	64.5	148.0	12.3	0.1	1.4	148.0	12.3	0.1	1.4

Historical Information for Turtle Tag 7A41161C

George H. Balazs  
 Marine Turtle Research Program  
 National Marine Fisheries Service  
 2570 Dole Street  
 Honolulu, Hawaii 96822-2396

Tag Information:	Date	Tag Type	Tag Position
Tag Number	11/14/02	PIT	LHF
4413152B00	11/14/02	P'	RHF
4414762635	7/9/98	P'	PIT
7A41161C			

Date	Type of Encounter	Location	Surv. Rank	Nesting Act	Straight Carapace	Since Last Encounter			Overall			
						Interval Month	Year	Growth-Rates cm/mo	Interval Month	Year	Growth-Rates cm/mo	
7/9/98	Near Shore	Molokai, Palaau A	N <sup>3</sup> 0		45.5	---	---	---	---	---	---	---
11/14/02	Near Shore	Molokai, Palaau	Change		53.1	---	---	52.0	4.3	52.0	4.3	0.1
						---	---	---	---	---	---	1.8

41356D1D7D

413572786D

41362A4705

41356F2715

PHOTOS  
 40 photos  
 Bill P... ..

Date: Tue, 4 Jan 2005 08:39:53 -1000  
From: George H. Balazs <gbalazs@honlab.nmfs.hawaii.edu>  
To: Bill Puleloa <puleloa@wave.hicv.net>  
Subject: Re: Stranded dead turtle (fwd)

Bill, here's the info on the recent Molokai turtle stranding.

----- Forwarded message -----  
Date: Tue, 04 Jan 2005 08:16:53 -1000  
From: Cody Hooven <Cody.Hooven@noaa.gov>  
To: George H. Balazs <gbalazs@honlab.nmfs.hawaii.edu>  
Subject: Re: Stranded dead turtle (fwd)

Contact info:

Sam Aruch

PO Box 220

Kualapuu, Molokai 96757

Dead, approx. 3' and 250 lbs., in tide line at Kawela Beach, east side  
of Kanoa Fishpond, heavily tumored.

Pick up  
DAY 1 11-12-02 TUESDAY PALAU

11

TUESDAY

SL-  
N-

SW-

CL-

CW-

(1)

46.7  
46.0

36.3

48.0

43.0

Mouth = clean

AX = 18.5



413603760F

LH

LAT = 19.3



41357C4D02

RH

(2)

69.5  
69.5

50.7  
~~44.5~~

75.0

63.5



41345A4768

LH

AX = 29.6

LAT = 29.7

Mouth = clean



41350C447D

RH

(3)

71.7  
71.7

53.7

77.0

67.0



41356D1D7D

LH

AX = 31.8

LAT = 31.1

Mouth = clean



4135727B6D

RH

PHOTOS

4B et al

JIT Quantance

(4)

45.2  
44.9

35.0

48.0

41.5

41362A4705



LH

AX = 18.0

LAT = 17.8

Mouth: clean



41356F2715

RH



# Seawords

December, 2002  
Volume XVI  
Number 11

Moloka'i's southern shoreline is speckled with remnants of an ancient Hawaiian agricultural practice. Circles of carefully built stone-walled fishponds protrude from the rocky shoreline, left over from the fishing practices of ancestors hundreds of years earlier. These fishponds, once a major source of food for the island's residents, have now been replaced by modern technology; leaving the barren fishponds as only a relic of times past. Residents of the island are now looking to restore the traditional practices of aquaculture and transform the archaic fishponds, which are on property owned by Kamehameha Schools Bishop Estate, into a sustainable economy for a new generation of Hawaiians.

Moloka'i's youth have a vested interest in ensuring the success of the fishponds' restoration. They hope to create an economy for Moloka'i aside from tourism, ranching and agriculture. One of the projects is to use the fishponds to create "live rock" out of cement, which is rock that contains living organisms that can be used in aquariums.

Working with University of Hawai'i's Marine Option Program, students have been able to work towards earning a MOP certificate while learning about the biology of aquaculture and the mechanics of constructing the ponds. "We are using the techniques of our ancestors to develop the fishponds," said MOP student Hano Naehu. "There is so much we can do to help support our future."

Describing the ahupua'a system, Naehu explained that the ancient Hawaiians developed their fishing practices by sectioning the land in a way so all areas both contribute to and gain benefits from the other parts. It is a chain reaction that starts on the tops of mountains, winding through the land until it empties nutrient-rich water into the sea, a situation that is ideal for nourishing the fish populations.

## A Visit to Moloka'i

by Katie Block

At the Keawanui fishpond, the students plan to grow taro, naupauka and other native plants in their garden. They are also considering constructing a windmill to help supply energy. "We are going to stock the ponds with milk-fish and mullet," said Josh Kalua, another MOP student at Molokai'i. "They feed low on the food chain and are good for our ponds."

Students work with Project Loko I'a coordinator Walter Ritte on Moloka'i, MOP director Sherwood Maynard on Oahu, and Maui Community College coordinator Donna Brown both inside and out of the classroom. Classes are held via UH HITS (Hawai'i

Interactive Television System) at the MCC Moloka'i Education Center where students engage in distance learning with other students from around the islands via television monitors. The classrooms are hooked up with microphones and cameras so that students can directly ask questions and communicate with classmates and the instructor.

"It's good because we get to learn about aquaculture without having to leave the island," said Naehu.

"We've come a long way with distance learning," said Donna Brown, MCC coordinator. "I remember when students had to hold a phone and listen to lectures that way."

Students hope to eventually transform part of the fishpond area into an education center for

the youth on Moloka'i to learn more about aquaculture and their heritage.

Students on Moloka'i are examples that within life and history opportunities for change can emerge. These students are working to preserve an ancient culture that has sustained their people for thousands of years. They hope to make the same commitment to their children, and thus to give Moloka'i a brighter future.



Hano Naehu holding "live rock" from the project's nursery at the Honouliuli stream fishpond.

TUES

11-12-02 Pickup DAY 1 PALAU

5L	SW	CL	CW
66.6	51.4	71.5	61.0
66.4(N)			

RFL am pit = shrunken

Reye cornea = clouded # > Previous tumor?

Mouth = ~~clouded~~ clean likely bleed??

5 RECOVERY

~~27.0~~ 27.0 = AVIL  
27.2 = LAT

LH 4135 1A 355 B  
RH 4136 355 F 79

63.5	50.9	58.0	60.5
63.4			

6

AVIL 24.6  
LAT 25.4

41357A5646 LH

4135706728 RH

Mouth =

58.4	SW	63.0	CW
58.2(N)	ditto		Healed injuries

7

AVIL = 23.7  
LAT = 23.5

41363F762F LH

41367C3D15 RH

→ Right side of cornea - MISSING MARGINALS

<del>65.0</del> 64.9(N)	49.3	69.5	61.0

Mouth = clean

8

AVIL 29.0  
LAT 29.2

413E480F21 LH

413605650D RH

## The Mangrove Debate

By Elena Millard

The Florida red mangrove, *Rhizophora mangle*, was introduced to Molokai purposely in 1902 by the American Sugar Company to help solve local erosion problems. By the 1940's, the mangroves had spread extensively along Molokai's coastlines and had also established themselves in abundance by means of ocean currents on the neighboring island of Oahu. Project manager of Molokai's Keawanui Fishpond, Walter Ritte, explains that "The mangroves were brought here to stop the soil from washing out onto the reef due to overgrazing by ranchers. Their roots took hold and did the job. The problem came when they were not managed. They became a pest. They inundated the native fishponds and made them inaccessible, the roots weakened and broke down the stone walls. They also cut off much access to the ocean. It has been 100 years now since the mangroves were brought here and its time we take a closer look."

A project under the principal investigation of Dr. Craig Smith and Ph.D candidate Amanda Demopoulos, both of the UH Mānoa Department of Oceanography, aims to assess the impacts that the mangroves are having on coastlines throughout the Pacific. Research is being conducted on Kosrae, Federated States of Micronesia, as well as on Molokai and Oahu, where large areas of mangroves have already been cleared. The researchers hope to identify the proportions of introduced to native organisms that are using the habitat and compare those results to the organisms that inhabit non-mangrove areas. The project, funded by Sea Grant, will help people to answer some of the questions that communities are having about the possible removal of the coastal plants.

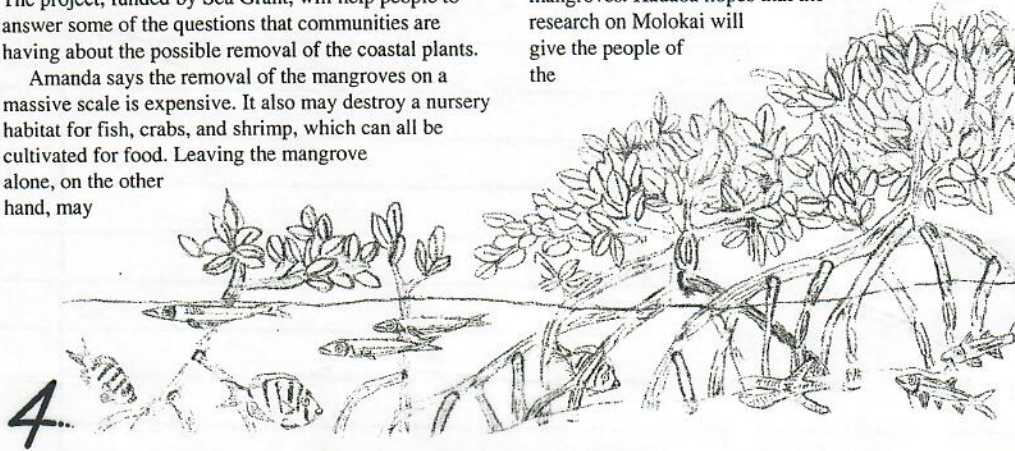
Amanda says the removal of the mangroves on a massive scale is expensive. It also may destroy a nursery habitat for fish, crabs, and shrimp, which can all be cultivated for food. Leaving the mangrove alone, on the other hand, may

result in a great reduction of native Hawaiian birds such as the Hawaiian stilt, *Himantopus mexicanus*, that require open water spaces for nesting. The tree's destructive effects on the fishponds may put an end to an important piece of Hawaiian culture.

From January 31st to February 3rd, a team of researchers, MOP students, and volunteers conducted the fourth survey of the ichthyofauna and other megafauna that are using the shallow mangrove ecosystem of Molokai's southwest shore. With funding from the USDA Forest Service, Institute of Pacific Islands Forestry and from MOP, MOP student Kauaoa Fraiola, a biology major at UH Mānoa, is assisting with this research on mangroves as his MOP project. In addition to helping with the collection, Fraiola also developed a way to efficiently set up and deploy the large 80 meter collecting net and will be working on identifying the species using taxonomic keys and microscopy.

After the perimeter of a 19 meter by 19 meter square plot was cleared of mangrove roots, the poles and net were set up at low tide. At high tide, the net was deployed and secured, and the animals were collected and preserved during the following low tide. The process was conducted again in a non-mangrove mudflat for comparison. The samples were brought back to the UH Mānoa campus for analysis.

Amanda will be conducting stable isotope testing which will give insight on what these animals are eating and if they are benefiting at all from food supplied by the mangroves. Kauaoa hopes that the research on Molokai will give the people of the





11-12-02 <sup>Pick up</sup> DAY 1 PALAAN END 15 DAY 1  
 TUESDAY

SL	SW	CL	CW
44.5	35.7	47.0	42.5
43.9 (N)			

9

APIL 16.0  
 LAT 16.3  
 mouth-clean

LH  
 4413356A4D

RH  
 441439433F

Tumored

49.8	39.1	CL	CW
49.6 (N)		52.5	45.0

LH  
 44146F0D48

RH  
 44143E5029

10  
 TS=1

APIL = 18.8  
 LAT = 19.1

mouth = ~~not~~ clean      Tumors = #1 (1) between scales on head

Tumored

62.7	50.2	CL	CW
67.6 (N)		66.5	59.5

LH  
 44142E0355

RH  
 4413014C17

11

APIL = 26.8  
 LAT = 27.1

TS=2

LFF #2 (3)      NECK #2 (3) visible externally  
 Leye #1 (1) #2 (1)      Mouth Rjaw #1 (1)  
 Reye #1 (1)      Ljaw #2 (1) 2 samples  
 RFF #3 (1) #2 (3)      Ayla Bico's biopsy: from LFF #2

4 samples from LFF, 3 separate tumors

94W PALM EMO 50mg

Pick UP DAY 2 11-13-02 Wednesday PALAU 17

SL	SW	CL	CW
57.4	46.6	62.0	54.5
57.7 (N)			

Note: 6 Central scutes

①

AVUL: 24.6		LH	mouth ok
LAT: 24.9			
		RH	

(SL)	(SW)	(CL)	(CW)
58.9	46.4	64.5	55.0
58.8 (N)			

②

AVUL 23.6		LH	mouth ok
LAT 23.5			
		RH	


61.7	58.0	67.0	61.0
61.5 (N)			

③

AVUL <del>24.9</del> 24.9		LH	mouth ok
LAT 25.3			
		RH	

63.3	50.3	68.5	61.0
63.0			

④

AVUL: 26.6		LH	mouth = ok
LAT: 26.7			
		RH	

PALANU

PICKUP DAY 211-13-02  
wednesda

19

SL  
SL-N

SW

CL

CW

63.9

49.3

69.0

68.0

5

63.8 (N)

27.1

AVUL = ~~27.1~~

LAT = 27.4



44131B582F

LH

Mouth



4414715C3C

RH

Okay!

swollen tear ducts left & right eyes

57.4

41.8

54.5

48.0

6

57.0

AVUL 19.9

LAT 19.8



44142C7215

LH

Mouth Okay



441305520D

RH

74.5

56.5

80.0

70.0

7

74.3

AVUL 30.7

LAT 31.4



44132E2848

LH

Mouth Okay



4422041251

RH

45.0

48.0

45.0

8

44.1 (N)

AVUL 17.5

LAT 18.0



4414326E67

LH

NEW RECRUIT!  
white plastered

VIDEO (MARC)

photo of fall

w/ STONEY

Mouth Okay



4413274320

RH

Weight  
27 lbs.

PL 36.6

11-13-02 Wednesday Pickup Day 2 PALAMU

21

SL 34.0

SW Ventral removed both flippers

FOR JOHN ZARDUS

9

PLASTIC: 34.0 (w/2 barnacles)

ANAL: 17.4

weight = 23 lbs.

LAT: 17.5



LH



RH

	(SW)	(CL)	(CW)
42.6	34.9	45.5	42.0
42.0 (N)			

10

45.4

34.9

(CL)

(CW)

45.0

48.0

40.5



LH

ANAL: 17.7

LAT: 17.1

weight: 27 lbs.



RH

SL 63.4

SW 47.8

CL 68.0

CW 59.0

NO TAIL 63.7

11

ANAL: 26.4

LAT: 25.9

MOUTH = okay



LH



RH

Tremors: #1 (1) NEW (may be regressing)

15=L

22

11-13-02  
Wednesday

Pickup Day 2  
PALAAD

(12)

Old Tags -  
RFL 4974  
LFL - Blue Plastic (Bottom Plate Mission) Z 129

Recovery

SCL - 64.5  
Notch (11.7)  
SCW - 52.5  
CCL - 68.0  
CCW - 61.5

Axial - 21.0  
Lateral - 21.1  
Mouth -

TS=2

Moderate Severe Emaciation - <sup>but</sup> plaster film

1 #3 Tumor on left anterior head - eroded  
upper beak (missing)  
Left eye is not affected  
by the Tumor



LH

44131E5D0E

RH

4413280252

11-14-02  
Thursday

PICK DAY #3 (New site)

PALAA<sup>23</sup>

LFF (407A41161C) = old tag

RECOVERY!!!

(SL) 53.1 (SW) 43.9 (CL) 56.5 (CW) 51.0  
(Noth) 52.5

RH "shell" missing (Axil) 21.4 mouth = okay  
(LAT) 21.5



LH



RH

LFF = deformed: healed fracture

(SL) (SW) CL CW  
64.6 51.3 68.0 60.5  
64.4

2

25.0  
Axil: ~~25.0~~  
LAT. 25.7



LH



RH

TUMBLER!

(SL) (SW) (CL) (CW)  
70.8 54.6 76.0 66.5  
70.2

R eye #2(1) Axil 28.4  
L eye #2(1) LAT 28.5

S=1

LFF #2(2)  
R jaw #2(1)  
NECK #1(1)



LH



RH

Pickup Day 3

11-14-02 Thursday PALAAS

25

SL/N

SW

CL

CW

(4)

85.2

66.1

93.5

83.5

84.9

NOTE: 5 LATERAL scales on right side.



44131B1F5B

LH

APU

37.8

LAT

37.6



44143A626C

RH

photos of twite  
with GB, Jill, Nick, & me  
Make Rice & me

(5)

60.5

47.2

66.0

58.0

60.3

APU: 25.5

LAT: 25.5



44132C0644

LH



4414326415

RH

(6)

74.0

58.3

79.5

71.0

73.7



4421603318

LH



44145F5572

RH

APU: 29.3

LAT: 29.5

Pickup Day 3 11-14-02

Thursday

SL/N

SW

PARAN

end Day 3  
27

7  
TURNED

62.3  
62.3

47.5

67.5

58.0

RFF #2(3)

LFF #2(2); #1(1)

APOL: 26.9

LAT: 26.8

Reye #1(1)

Leye #1(1); #2(1)



4414476A7F

LH

Rjaw #2(1)

Ljaw #1(2)



44127F6624

RH

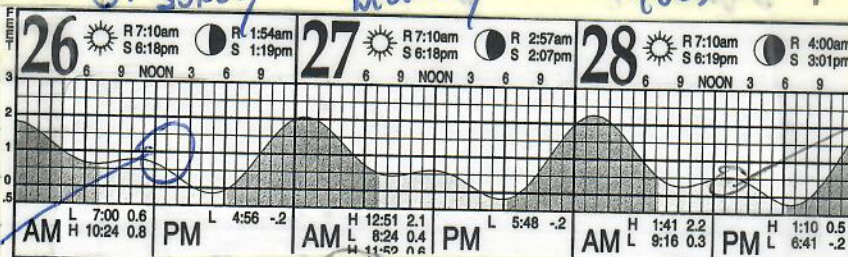
TS-1



28

January 2003  
Sunday Monday

Tues. Day 2

Bullpen  
Net  
SetBullpen  
out

11 turtles

4 turtles

15 TOTAL

GPS of Bullpen Set =

N 21.05555  
W 157.06268

27 January 03

Monday

Pickup  
Day 1

Bob Morris & I  
 Depart Island Air 6:15am w/ haven't  
 for Molokai Palau stomach flush 2 pickup  
 days. TO Dock, depart ~ 7:30am  
 Dept's "Baby Fish" boat. Also w/ Annie Ferris  
 and reporter from Oregonian newspaper (Travel)  
 Bill Puleloa.  
 TO "House" at Harbor transfer to  
 "IN AI" net boat - glassy calm, no  
 swell, no wind. 11 turtles in net.  
 Small pieces of presumably *Lynx*  
 collected by K.A.  
 Back to dock about 3pm. Checked  
 in to Hotel Molokai. Drove to  
 Palau lookout Kalapala. Drove to  
 just past Mr. Morher 14 Aets house  
 for 7pm fish fry dinner. Fred Bicy  
 & wife. Ayla showed us her FPJ  
 science project. (cont. page 30)

Date: Thu, 23 Jan 2003 08:15:42 -1000  
From: Edwin V. Medeiros <ed@mobetah.net>  
To: 'George H. Balazs' <gbalazs@honlab.nmfs.hawaii.edu>  
Subject: RE: Monday and Tuesday Pickups

[ The following text is in the "Windows-1252" character set. ]  
[ Your display is set for the "US-ASCII" character set. ]  
[ Some characters may be displayed incorrectly. ]

Geworge -

Well as you, neither wind nor snow or high surf can prevent Friendly Isle Fish Comapny for accomplishing it's work, My crystal ball tells me that we should be in the water on Sunday and be ready for you on Monday at the Warf at around 7:30. I have laid net in this area during Hurrricane Eva and still was able to retrieve all of my equipment. No problem!!! See you on Monday, God Willing.

PAUAAU  
MOCOKAI  
SN# 557685

01/27/03 12:26:54.0	25.76
01/27/03 14:26:54.0	26.81
01/27/03 16:26:54.0	27.52
01/27/03 18:26:54.0	27.34
01/27/03 20:26:54.0	26.63
01/27/03 22:26:54.0	26.11
01/28/03 00:26:54.0	25.76
01/28/03 02:26:54.0	25.42
01/28/03 04:26:54.0	25.42
01/28/03 06:26:54.0	25.24
01/28/03 08:26:54.0	25.07
01/28/03 10:26:54.0	25.59
01/28/03 12:26:54.0	25.07

Continued from page 28

28 JANUARY 03 Breakfast at Molokai Drive IN,  
Tuesday

Depart, Part's boat about 8 AM.  
Workmen jock-hammering up catwalk near  
boat ramp. 4 turtles in net.

John Goman & crew Maui Ocean Center  
came to get small ray from yesterday,  
but it wasn't there today. They didn't  
want white-tipped sharks. They took  
back many small blue/pacific  
turtles transferred to House porch deck  
where we worked them up. Ed's foot  
deeply cut by KKA fish blades on tail.  
Stitched by Dr. Morris.

finished about 9 PM - Ed etc had  
piked up net and returned to house.  
Returned to dock via Part's boat.  
Spent some time watching Humpback  
whales.

Shower at Hotel, packed and checked  
out by 3 PM. Depart on 6:15 PM Island Air  
flight. Just before, we drove to  
Maui Loa town - general store  
and kit shop.

660.66708

MAWI ocean club

274-7000

6. 870-8656

SCL

65.2

59.7

Glucose

75

85

114

5

1/27/03 DAY 1 PICKUP Palau 1/27/03 33  
MONDAY

SL-65.2 SW-52.0 CCL-71.0 CCW-62.0

N-64.9

SF

①

AX-27.9



LH

Q 8278

Recaptured

LAT-28.3

Gauge: 75

434F727749

RH

See 8/26/03 See PAGE 109



SL 72.3 N 71.8 SN 56.5 CL 79.5 CW 71.5

②

435B3C601D

LH

AX 29.8



LAT 30.2

434829543B

RH

SF



Q 8253

STOMACH samples jellyfish

SL 59.7 N 59.1 SW 47.5 CL 64.5 CW 60.0

64.5

③

AX 25.4



LH

SF

LAT 25.8

435B6C3639

Q 8281

43593E2074

RH



GL-85

N 55.1 SL 55.9 SW 41.2 CL 59.0 CW 48.0

④

4359113738

LH

SF



Q 8251

433D372041

RH

RF Flipper Swollen



⑤ Radius 2.4mm

AX 21.8

LAT 21.9

Pickup Dty I PACAAU 1/27/03 35

SL-68.0 SW-47.9 CCL-67.5 CW-58.0

5

N-67.7

435904374C

LH

SF



Q8282

AX-25.5



RH

Glucose  
GL-114

LAT-25.7

SL 67.1 N 66.8 SW 54.0 CL 73.0 CW 67.5

6

AX-28.7

435C2A7B7A

435C40206A

SF

LAT-28.8



Q8280

LH

RH

SL 57.5 N: 57.0 SW 45.2 CL 61.5 CW 54.5

7



435874632F

LH

AX 22.5

SF

LAT 22.6

Q8250

43520E6C33

RH

Recovery

Old Tag

J212 LF

J211 RF

J213 RR

8

SL-67.8



435C2E7B76

LH

AX-27.4

N-67.6

SW-54.3

CCL-73.5

CW-67.0



4349106F4B

RH

Glucose 90

Q8252

SF

SL 44.0 N 43.4 SW 34.5 CL 47.5 CW 41.5

9

RH 1/8 missing + healed

glucose: 95

Stomach  
SF Lush

435B781240



LH

April 17.9

Lateral 17.9

435C110549



RH

Q8283

Pickup Day 1 1/27/03 PALAAN

37

⑩

AX - 28.4

LAT - 28.6

SF

Q 8279

GL 108

① #1 Right Eye - Anterior

SL 69.6

N 69.3

SW 55.8

CCL - 75.5

CCW - 67.5

433D42420D



LH

4368025255



RH

TS =  
I

⑪

CCL 70.5

CCW 60.5

SL 64.9

N 64.7

SW 49.8

AX 26.2

LAT 26.4

4367571452



LH

SF

Q 8254

4358633949



RH

Assisted  
1/27 &  
1/28/03  
Palaan

Annie Farris

1640 Prince Crk, Rd.

Carbondale, CO 81623

970-963-9509

anniefarris@hotmail.com

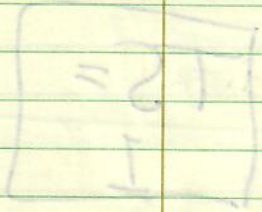
cut

423767421F

508F2B682F

27 & 28 JANUARY 2003 Bull Pen Set

28 JAN 03 - GPS = N 21 05 55  
W 157 06 26 8



(4)



Palaau

JANUARY 28, 03 pickup DAY 2 39

PL 52.2 Tail 14/10  
 ① SL 64.8 SW 52.5 CCL 69.5 CCW 62.5  
 N 64.8  
 AX 26.6  
 LAT 26.7  
 Left Eye 1 #1 Posterior 1 #1 Anterior  
 Right Eye 1 #1 Posterior

SF Q8255

434A290B00  
LH

Overall Tumor Score = 1

Glucose 101 mg/dL

43587C2B47  
RH

② PL 49.8 Tail 11/7.5  
 SL 61.2 SW 47.8 CCL 66.0 CCW 59.0  
 N 60.8  
 AX 25.4  
 LAT 25.7

SF Q8256

435B64787F  
LH

Tumor Score = 1

Glucose 89 mg/dL

442F1E7A03  
RH

Left Eye 1 #1 Posterior  
Right Eye 1 #1 Posterior

③ PL 50.5 Tail 13.5/8.5  
 SL 62.8 SW 49.5 CCL 67.0 CCW 59.5  
 N 62.4  
 AX 26.0  
 LAT 26.2

SF Q8257

423767421F  
LH

3 Tumor Biopsy  
Normal Skin

TS = 0

500F2B682F  
RH

- Took Biopsies  
- 4 Raised Areas of Right Shoulder  
- Possible Regressed Tumors

Glucose 75

Right Eye: Clouded Cornea. Limited Vision  
Left Eye - Suspicious Bump - Posterior - Potato

# Pickup Day 2 JANUARY 28, 2003

41

Palaau

Jan. 28<sup>th</sup> 2003

④

PL 51.9

Tail 11/7

SL 63.5

SW 47.2

CCL 68.5 CCW 58.0

N 62.8

AX 24.7

422D603C57

LH

LAT 24.7



SF

Q 8258

4235046440

RH

Glucose 97



LFF 1#3

Right Neck 1#3

1#1 Neck

LJH 1#2, 1#1

RJH 1#1

TUMOR  
SCORE =  
2

HARD PALATE 1#1, 1#2 = ORAL

10<sup>th</sup> Marginal Right Healed Notch

Healed Notch Right Hind Flipper

Oral LJH visible externally

Smooth tumors <sup>some</sup> w/ necrotic holes suggestive  
of Regressing.

END 1/27-1/28/03  
PALAUA





Aug 2003

25

Day 1  
water 100%  
water 100%  
w/ M. K. K. K.  
one 100%  
Plush  
usage

# FUN HOGS SPORTFISHING

FISHING, WHALE WATCHING & SIGHTSEEING  
(WEST END, SOUTH SHORE, & NORTH SHORE)

**808.567.6789**

Welcome to Molokai! You've come a long way and the ocean awaits you! Enjoy the natural beauty of our island from offshore aboard the Ahi, a 27-foot twin diesel sport fisher. The Ahi is located at the Kaunakakai Wharf, Slip #11, second slip beyond the boat ramp. We offer....

**DEEP SEA FISHING CHARTERS** 4, 6 or 8 hour trips. Join us for the excitement of hooking up and landing a Mahi-Mahi, Ono or a speedy tuna. Gear provided.

**SUNSET CRUISES** 4 to 6 pm Celebrate the sunset with the whales and peaceful beauty of our southern coastline. 6 passenger maximum.

**NORTH SHORE EXCURSIONS** Weather permitting, see the pristine north shore of Molokai. Plan on a full day, fish along the way. Advance reservations required. Best months, August, Sept & October.

**WHALE WATCHING** December through April. Enjoy the whales breaching in the channels between Molokai and Lanai. Tours run twice a day 8:00 to 10:30 and 10:30 to 1:00.

## **CALL FOR DETAILS**

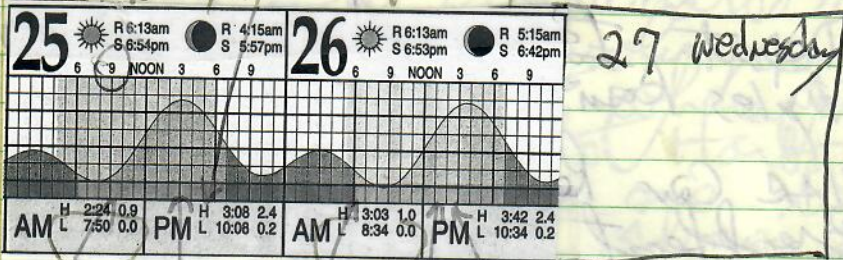
Captain Mike Holmes  
P.O. Box 424, Hoolehua, HI 96729  
[www.molokai-rentals.com/funhogs](http://www.molokai-rentals.com/funhogs)  
Email: [oceanman@mobettah.net](mailto:oceanman@mobettah.net)

Aug 2003

Monday

DRIVE TO  
HAWAII  
MY SIGN  
OF TESTING

Tuesday



DAY 1

Myles, GB, KA  
 8:30am Depart KK  
 W / MIKE & MIES  
 One Hand Snorkel  
 Flush  
 NOTAGS

Return to KK

DAY 2

1pm Return  
 Depart  
 6AM Return  
 1pm  
 one Hand Snorkel  
 Flush  
 TAG Recovery

1pm Return

Myles and KA  
Depart

PALAU

8/25/03 Depart Island Air 6:15 am  
 Monday w/ Myles Roanoke & Karen Arthur,

Dollar Car Rental - to Bakery  
 for breakfast then to HK Pops -  
 Slip 2 "Ahi" 27 ft twin Diesel  
 owned by Mike Holmes. Met Ed.  
 Recall he could go fishing due to  
 Lammoney tip-over accident.  
 Departed ~ 8:45 am for Palau  
 no South Swell - no wind.

As we (low tide 7:50 am) motored  
 in we saw 2 turtles semi submerged  
 on coral head on right, GB & Arthur  
 in water, but turtles got away before  
 we could get to them.

~9:15 am We then started her and snorkeled  
 landward toward house on reef following  
 reef edge - swam in ~~the~~ <sup>(one turtle seen)</sup>  
 then crossed over to west side  
 off Palau harbor channel -  
 snorkeled seaward - saw only one  
 turtle in crevice and caught it.  
 Karen <sup>TRIED TO catch but slipped away</sup> saw one coming out of crevice  
 on East side.

Then snorkeled onto reef flat Myles also Toward  
 tube. Made a large oval shaped  
 pathway going out to where waves were  
 normally break out into area where  
 bullseye is set. Then back to boat

Sugba Sugba Palau - Mitro Holmes

8/2/03 worked in Palau Harbor, lots of  
muddy ~~lygys~~ <sup>lygys</sup> seen (mostly gray-brown) seen  
at zone about 200m (not possible  
to be so close to harbor, Karen  
collected some. One one turtle seen -  
moving in juvenile, out closer to the  
wave break - estimated depth 6-9 ft.



8/26/03  
Stomach flush  
Palaau

98

Date: Fri, 7 Sep 2001 07:45:59 -1000  
From: George H. Balazs <gbalazs@honlab.nmfs.hawaii.edu>  
To: Bill Puleloa <puleloa@aloha.net>  
Subject: Re: Tag 9575 Molokai

Bill, Here's what Shawn just dug out! AmAZing. YOU tagged it, the record is from you, one of your typed data sheets that you used to send. Do you recall the case now? Was the turtle you rescued at Halawa Nesting ashore? Was it now adult size now? SuperStuff, please write back soon. You've saved and handled the turtle twice in 15 years! She loves you I'm sure, very powerful stuff. Aloha, George

PS I go to Midway for a week of field work starting tomorrow. Will send you in separate email our summary of results for Midway to date.

Only encountered once....captured incidentally in fishermen's nets on 5-21-86 at Kalokoeli Fishpond, Kawela, Molokai, SCL=53.5cm, CCL=57.5cm, no tumors. Tags 9575 LFL/9576 RFL. Comments..."Definitely not a green turtle but was identified as a hawkbill after checking with reference materials and literature".

> \*\*\*\*\*

>> On Thu, 6 Sep 2001, Bill Puleloa wrote:

- >
- > > Mahalo for the copy of the Saipan survey. Had to rescue a turtle at
- > > Halawa on the August 2nd. She made it back safely. Tagged with
- > > #9575.....what's the scope with this animal?

----- Forwarded message -----

Date: Mon, 10 Sep 2001 09:13:29 -1000

From: Bill Puleloa <puleloa@aloha.net>

To: George H. Balazs <gbalazs@hnlab.nmfs.hawaii.edu>

Subject: Re: Tag 9575 Molokai

Thank goodness for Shawn. I've long since given up trying to maintain my turtle data base. Yes, after relocating my original data book I clearly recall the incident. She was not a by-catch of Ed's operation, but instead old man Horcajo's (who has since departed us). I remember him saying that he had released several other turtles that day, but realized that this one, i.e. #9575 was different and therefore held it in his boat for me to see. Indeed it was different! I drove to his boat to examine and tag the animal which was released in front of Kanoa Fishpond. It may be a opportune time to correct your data base. The animal was caught in the vicinity of Kalokoeli fishpond, but tagged and released at Kanoa fishpond which is very close by. Kalokoeli is a decrepit pond long since destroyed and known to only a few old timers. It may be useful to use Kanoa as a reference point to avoid confusion in the future.

#9575 was indeed an adult, and a contributing female at that on the night of August 2nd. She was on the beach doing her business the night before but apparently mistime her activities and was caught by the morning sun. The time frame between her initial encounter at Kanoa to now Halawa suggest nesting activities may be somewhat novel to her, hence the bad timing. We didn't have a measuring tape, but my best guesstimate puts her CCL at about 95 cm conservatively. No tumors. Right tag #9576 no longer attached.

----- Forwarded message -----  
Date: Thu, 15 Nov 2001 15:05:00 -1000  
From: Bill Puleloa <puleloa@mail.aloha.net>  
To: George Balazs <gbalazs@honlab.nmfs.hawaii.edu>  
Subject: 'ea from Molokai

Please add this to our database. This hawksbill was an incidental catch by a fisherman at Kahananui, Molokai on Thursday, November 15th. Under separate covers I'm sending you some tissue sample.

Data as follows:

curved carapace length: 33.0 cm  
straight carapace length: 31.0 cm  
curved carapace width: 28.0 cm  
straight carapace length: 24.0 cm  
monel tag left front flipper: V-884  
monel tag right front flipper: V-883  
released at same site of capture at Kahananui, Molokai  
(between Puhaloa and Ualapue fishponds)



## HAWAII'S ENVIRONMENT

JAN TENBRUGGENCATE

9-18-00  
**Kaua'i THA  
 infected  
 with 'kiawe  
 from hell'**

**A** very long-thorned form of kiawe is spreading on the west side of Kaua'i, and landowners are being urged to eradicate it before it gets worse.

The plant, *prosopis juliflora*, first appeared in Hawai'i in 1978 at Sand Island on O'ahu. It appeared several years ago along the sandy coastline at Mānā on Kaua'i. It's not clear whether seeds washed ashore from the O'ahu infestation, or whether the plant was inadvertently imported by humans.

Its thorns, some as long as two inches, are the problem. They are sturdy, and can puncture automobile tires, as well as slippers and shoes.

Surfers and fishermen who drive down sandy roads to the beach refer to the plant as "the kiawe from hell."

Botanist Winona Char found the plants established along the beach during a recent botanical survey at Kapalawai, the Robinson family home near Pākalā.

The plants there were restricted to the coast, and apparently had grown from seeds washed down the coastline from trees at the nearby Pacific Missile Range Facility.

Char said she also performed a botanical survey for the missile range, and found what she assumes is the mother plant for the West Kaua'i infestation.

"I found a huge plant, about 25 feet tall and wide," she said.

Char said she has recommended to the missile range that it eradicate the long-thorned kiawe. In recent testimony before the state Land Use Commission on a proposed developed at Kapalawai, she also recommended the plants be eradicated.

Kaua'i attorney Laurel Loo, at the same Land Use Commission hearing, said that during a field trip to the Kapalawai site, kiawe thorns pierced her sneakers.

One serious concern: The long-thorned kiawe readily crosses with the traditional kiawe found in Hawai'i, creating a new strain of trees with long thorns.

The first traditional kiawe, *prosopis pallida*, was brought to the Islands in 1828, and planted at the old Catholic Mission grounds on Fort Street. While kiawe, also known as algaroba or mesquite, is from the Americas, its seed came by way of the royal gardens in Paris.

The offspring of that Fort Street tree sired all the subsequent kiawe forests on the dry leeward sides of the Islands.

The tree does well in dry areas, and kiawe seed pods have been used for cattle feed.

Thorn length isn't the only difference between the long-thorned and standard kiawe. Leaflets on the long-thorned variety are considerably larger than those found on the standard kiawe, which has small, feathery leaflets.

Char said the long-thorned variety also has a tendency to extend long, narrow, thorned branches out along the ground, where they are easily stepped on or driven upon.

Date: Fri, 22 Sep 2000 11:01:55 -1000 (HST)  
From: "George H. Balazs" <gbalazs@honlab.nmfs.hawaii.edu>  
To: Bill Puleloa <puleloa@aloha.net>  
Subject: Story

I think you need to think long and hard about doing that (writing a story, sharing with others what you wrote to me).. Hanging the turtle in a tree, wrapping it up in netting, and the turtle fall to the ground, was never ever a part of any plan I heard about beforehand, nor would have thought appropriate. Also, not setting up camp right with the turtle, to be there with her.

I wonder two things for the turtles sake. Maybe you can help to answer or speculate. How high up was she, how much of a fall was it? Was all netting accounted for, might she have been entangled with some pieces and taken them back into the ocean with her?

On Fri, 22 Sep 2000, Bill Puleloa wrote:

> I just started writing and it came out the way it did. No one else  
> got a copy of it but yourself. It sounds corny but that night's  
> encounter was more of a spiritual engagement than anything else for  
> myself. I guess I allowed my emotions to take over and thus the  
> particular tone of the message. Since you've inquired, I've since  
> gone back to reread it. Perhaps there's a message to be shared. I'm  
> considering expanding on it for possible publication in some native  
> Hawaiian narrative type journal.

----- Forwarded message -----  
Date: Sun, 10 Sep 2000 17:48:17 -1000  
From: Bill Puleloa <puleloa@aloha.net>  
To: George Balazs <gbalazs@honlab.nmfs.hawaii.edu>  
Subject: reprieve

who were the other 3?

She was beautiful! Vigorous and full of fight when we tried to stop her from returning to the sea. It didn't take us long to realize that holding her in the box was not going to work. Reinforcement with ropes, rocks, stakes, sand, and tree branches proved futile. She was too strong and too determined. Not to be outdone, we procured an old cargo net. Using two pieces of rope, we wove them through the webbing creating a bag. Four of us together lifted and placed her in it. As an added measure, we hung our prized clutch from the heliotrope tree. Suspended above terra firma, she had no leverage at all. After watching her dangle for more than an hour and being satisfied, we returned to camp for the night. A pervasive feeling deep inside made me feel most uneasy. I walked back three times to check on her. On the third trip, I was shock to see the bag hanging limply in the air. She had dismantled several weathered strands, and that was enough for her to slip out. Thinking there was still enough time, I quickly located her tracks with my flashlight but to my dismay saw them disappear into the surf. Too late! Almost in disbelief I stood there momentarily stunned, staring helplessly at her truncated imprints. The sound of waves lapping onshore eventually jarred me back to reality, and slowly I came to realize that she was actually safe and well. Eschewing our snare, she now swam unhindered in the bosom of the sea. Oddly enough, the disappointment I was feeling began to be replaced with a sense of relief. It was as if a large weight had been lifted off my shoulders. At this point for some curious reason, my mind flashed back to a time when as a youngster my grandmother admonished me for being too inquisitive. "Niele!", I remembered her telling me when I peppered her with questions about her life. Staring into the dark moon less night, it was as if she were talking to me again. Clearly I recalled her voice telling me ". . . you don't need to know all those things." The difference this time was I understood what she was trying to tell me those many years ago. She wanted me to accept her as she was. There was no need for me to know every nuance about her life. I should have been satisfied knowing she was alive and well, and that we were together for time being. After all, isn't

If she fit then it had to work because it has numerous part times. Not part of acceptable INSTRUCTED methodology! I wanted to sleep next to turtle. OR TAKE turtle TO CAMP OR TURN turtle over and eggs.

DAN'S NAME =

maybe Bill does it but stress do.

Yes  
any  
pieces  
with  
her?  
of  
what  
how  
far?

that what matters the most? We had that turtle bundled up tighter than a drum and still she managed to escape! A clearer omen there could not be. It was as if someone was reminding me again not to be so niele, and to accept things as they were. That turtle was full of life, going about her business as she has done for so many years now. We should be satisfied with the knowledge that she is healthy and robust, and a successful progenitor of her kind. In return, she asked only for anonymity. It seems only fair to allow her this remaining shred of dignity as the rest of the world collapses on her existence. Turning my back to the beach, I walked silently towards camp feeling deeply appreciative of the opportunity to have shared a moment in time with her on this earth. For me, that will be good enough. If she needs to be tagged, labeled, and burdened with some manmade contraption, it'll have to be done without my participation. I owe that much to my grandmother.

*Mobo Bud*

**Subject:** mahalo

**Date:** Mon, 11 Aug 2003 07:19:22 -1000

**From:** "Jeffrey Polovina" <Jeffrey.Polovina@noaa.gov>  
**Organization:** NOAA

**To:** Guy Hughes@nps.gov

*reed*

**CC:** Bud Antonelis <Bud.Antonelis@noaa.gov>, George Balazs <George.Balazs@noaa.gov>

Guy, The night at Kalaupapa was a welcome rest. We left at about 7am the next morning and with the wind and waves at our backs made it to Mo'omimomi in about 3 hours. We played with the kite for a while even tied the two kayaks together and used the kite to tow use - although the most fun was using the kite with a single kayak and surfing the waves. At Mo'omimomi we saw recent turtle tracks and a couple nesting pits. Thanks again Guy for the opportunity to stop over in Kalaupapa and to meet you. We greatly enjoyed your tour. I know Bud will continue collaborating with you on Monk Seals and if there are any other marine resource issues you think we can help with please don't hesitate to contact me. Cheers, Jeff





## HONOLULU LITE

Charles Memminger

EXLEY  
2003

### HSB Molokai is cruisin' for a \$\$\$ bruisin'

**S**AY someone wants to come to your house and give you money. Now say it again. Say it as many times as you want, but it's not going to happen.

Unless you happen to live on Molokai. There are literally shiploads of people aching to disembark on the Friendly Isle and give money to the friendly islanders. But some of those islanders aren't so friendly when it comes to cruise ships. They don't want the big boats parked outside their reefs, shuttling sunburned travelers to the island to sight-see and buy island-made Molokai mementos. True, the island where the doodads are made actually is Taiwan, but hey, an island is an island. Or is it?

Some islands, like Kauai, Oahu and Maui, beg for tourists. A tourist is the most efficient and advanced currency-conveying organism to evolve on Earth. And it is very easy to get tourists to give you currency. You simply have to give them something of less value in return. Why tourists would be willing to buy a puka shell necklace for \$25 when

they can buy a bag of the same necklaces at Costco at home in Boise for half the price is one of those happy mysteries that keep tourist industry executives giggling themselves to sleep every night.

Like turtles wading ashore to bury eggs in the sand, tourists come ashore here and leave wads of swag buried in local businesses. Government officials thoughtfully wrench most of that money away from the businesses in the form of taxes, fees, assessments, charges, levies, tariffs and ransom, investing it in things like schools, roads and the election campaigns of their brothers-in-law.

**MOST ISLANDERS SEEM** happy to relieve tourists of their financial burden. Kauai is like a punch-drunk fighter when it comes to trying to attract tourists: Every time it gets on its feet, it gets knocked down again. (It's an uppercut from the Gulf War! Boom! It's a straight right from Hurricane Iniki! Slam! The champ's tryin' to get to his feet. He's almost up. He's ... wait! There's a roundhouse from 9/11. Blooie!)

But there are two islands that aren't that keen on tourists: Molokai and Kahoolawe. Well, Kahoolawe likes tourists to visit, but it keeps blowing up.

Molokai residents have gotten used to low-key tourist developments, but some don't want the cruise ship trade. Their prayers that the cruise ships not anchor have been eerily answered in recent weeks, once when the wind kept the boat at bay and last week when the ship was called away by the Coast Guard to help in a rescue at sea.

Don't be surprised if the anti-cruise ship faction wins this one. Not because they are right. But because once seagoing tourists find out that neither they nor their moola are wanted on Molokai, they'll find a friendlier isle in the chain on which to unload their dough.

Charles Memminger, winner of National Society of Newspaper Columnists awards, appears Mondays, Wednesdays, Fridays and Sundays. E-mail [cmemminger@starbulletin.com](mailto:cmemminger@starbulletin.com)



Revised 04/04/01

NMFS, HONOLULU LAB  
 Marine Turtle Research  
 2570 Dole Street  
 Honolulu, HI 96822-2396

SEA TURTLE TAGGING FORM

DATE FORM FILLED OUT / /

CAPTURE DATE, LOCATION AND METHOD:

*Molokai*  
*Mounds*  
**PALAAU 8/25/03** *Hand snorkel*  
 PERSON RECORDING DATA: **MYLES** *"Harbor"*

TUMOR SCORE

ORAL TMRS EXT:

YES OR NO

EMACIATION CODE

OLD TAGS:

*(Diagonal slash through box)*

NEW TAGS:

*Westside - EDGE*  
*Well inside*  
 RFL:   
 442C514810  
 LFL:   
 442D053F7C

STRAIGHT CARAPACE - LENGTH:

cm

WIDTH:

cm

NOTCH LENGTH:

cm

DB:

L.O.

VB:

L.O.

CURVED CARAPACE LENGTH:

cm

WIDTH:

cm

HEAD WIDTH:

cm

AXIAL:

cm

LATERAL:

cm

PPS: YES OR NO OR NE

SEX: Male, Female or Undetermined

TAIL LENGTH: T

cm

C

cm

RIGHT FRONT FLIPPER WIDTH:

cm

SAMPLES COLLECTED:

PLASTRON LENGTH:

cm

*KA. Stomach Flush*

WEIGHT:

#

DESCRIPTIVE REMARKS:

*Jelly for in mouth*

*Snorkel from Mike Holmes boat "Ahi"*

Revised 04/04/01

NMFS, HONOLULU LAB  
Marine Turtle Research  
2570 Dole Street  
Honolulu, HI 96822-2396

*Handwritten:*  
K.I.D  
PALAAN  
8/25-8/26/03

SEA TURTLE TAGGING FORM

DATE FORM FILLED OUT / /

CAPTURE DATE, LOCATION AND METHOD: *Tuesday*  
*Palaan Molokai 8/26/03 Hand/Snorkel*

PERSON RECORDING DATA: *Myles* *Near Harbour Edge*  
*outer entrance*

TUMOR SCORE:  0 *LN*  
ORAL TMRS EXT: YES OR NO:  *LN*  
EMACIATION CODE:  0  
OLD TAGS: 4358792703  
                  734F727749  
NEW TAGS: RFL: \_\_\_\_\_  
                  LFL: \_\_\_\_\_  
*Recaptive from 1/27/03 see page 33*

STRAIGHT CARAPACE - LENGTH: *1/27/03*  cm WIDTH:  cm

NOTCH LENGTH: *65.2*  cm DB:  L.O. VB:  L.O.

CURVED CARAPACE LENGTH: *1/27/03*  cm WIDTH:  cm

HEAD WIDTH:  cm AXIAL:  cm LATERAL:  cm

PPS: YES OR NO OR NE  SEX: Male, Female or Undetermined  U

TAIL LENGTH: T  cm C  cm

RIGHT FRONT FLIPPER WIDTH:  cm SAMPLES COLLECTED:

PLASTRON LENGTH:  cm *K.A.S. Stomach Flush*

WEIGHT:  # *Yellow fish from mouth on face.*

DESCRIPTIVE REMARKS: *Smeat of stomach algae on page 66-67*

*Print pictures of turtle.*

*Snorkel from Mike Holmes "BOAT "AHI"*

Revised 04/04/01

NMFS, HONOLULU LAB  
 Marine Turtle Research  
 2570 Dole Street  
 Honolulu, HI 96822-2396

SEA TURTLE TAGGING FORM

DATE FORM FILLED OUT / /

CAPTURE DATE, LOCATION AND METHOD:

--	--

PERSON RECORDING DATA:

TUMOR SCORE <input type="text"/>	OLD TAGS: <input type="text"/>	NEW TAGS: <input type="text"/>	
ORAL TMRS EXT: YES OR NO <input type="text"/>	<input type="text"/>	RFL <input type="text"/>	
EMACIATION CODE <input type="text"/>	<input type="text"/>	LFL <input type="text"/>	
	<input type="text"/>	<input type="text"/>	

STRAIGHT CARAPACE - LENGTH:  cm WIDTH:  cm

NOTCH LENGTH:  cm DB:  L.O. VB:  L.O.

CURVED CARAPACE LENGTH:  cm WIDTH:  cm

HEAD WIDTH:  cm AXIAL:  cm LATERAL:  cm

PPS: YES OR NO OR NE  SEX: Male, Female or Undetermined

TAIL LENGTH: T  cm C  cm

RIGHT FRONT FLIPPER WIDTH:  cm

PLASTRON LENGTH:  cm

WEIGHT:  #

DESCRIPTIVE REMARKS:

SAMPLES COLLECTED:


## LOCATION, SIZE, AND NUMBER OF TUMORS

	#1	#2	#3	#4	TOTAL	REMARKS
RIGHT EYE						
LEFT EYE						
MOUTH						
NECK						
RFF						
LFF						
RHF						
LHF						
CLOACA / TAIL						
SEAMS / SCUTES						
INTERNAL						
TOTAL						

ORAL TUMORS VISIBLE EXTERNALLY: YES OR NO

OTHER INFORMATION:

TUMOR SCORE: 

APPROXIMATE TUMOR SIZE CATEGORIES:

#1 = DETECTABLE PATCH TO 1cm DIAMETER

#2 = &gt;1cm TO 4cm

#3 = &gt;4cm TO 10cm

#4 = &gt;10cm



"ON DOMMIT, ON STUPID,  
ON WUNDAH, ON BITTEN,  
ON SMASHA, ON RANCID,  
ON PANTAH AND WHICH'UN....."



.....OH..... HI!!! Merry Christmas 2002!

I was just reminiscing about Pop & how he used to rename all our animals..... always makes me smile....

So, did this year fly by fast enough for you all?? Yikes!! Hang onto your BVD's, another year's approaching!!



This year almost seems like a blur. Oh..... It IS a blur, wait I have to get my glasses..... yes, we are all getting older (considering the alternative, that's a GOOD thing!) We are now the ones telling the little old folks jokes. Only they aren't jokes, they are now every day occurrences of life! Like putting a pie on the roof of the car while you unlock the door & then driving off with it still up there (until you go around a corner & hear that sickening "SPLAT!" sound) Or when you knock on wood for luck, you answer yourself "Who's there?" And getting up out of the easy chair to stumble off to bed has become An Event. No easy movements here! Ah well.....



Ok, enough of that.... Eddie's internet business is growing & branching out into other related enterprises. They went wireless this year & spent time putting up antennas in strategic areas of Molokai. Amazing. They even advertise at all the Wallace theaters in Hawaii now - "Molokai's homegrown internet service" - with cute pictures of Kela (our niece) & her best friend Tarrah to attract attention. Eddie's been super busy, flying off-island several times a month now for various meetings. Yup, he's Somebody all right! But he always remembers to give thanks to God, the REAL Somebody behind it all! Thank you, Lord!!

Don't get to see quite enough of the grandkids, but then what grandparent ever does, huh? They are some sweet kids, Kaila's 19 months now & full of pizzazz! Has DEFINITE ideas about not wearing shoes! Egads! Rips those buggers right off her little tootsies in a screaming rage!! Then smiles & sighs with relief! AHHHH!!! Kekoa is the star of her life.... Wonderful Big Brother! Watches over her fiercely, & then tortures her when he can get away with it. He's a smart little guy, caring & funny - like his mom & dad. Good peoples!!



Thought I was going to get away with not having to say we lost another kitty but.... Teeta was determined to go to Heaven, so there you are. What is it about cats and highways anyway?? Capone grieved in his own muttly way....(oh boy, more cat fud for ME!!!)



I am still plugging away at the Credit Union... year #15!! I can't believe it. But every time I think about quitting, some sweet little lady comes in & says something like "Can you help me? They're going to turn off my electricity and I have no one to help me but you." Now how can you walk away from folks like that? I'll probably be here until they have to pry my wrinkled fingers off the computer keyboard!

So, much love to you all and God's blessings for this coming year. And when things get crazy, remember what Corrie Ten Boom said - "There's no safer place to be than in the center of God's will."



MUCH LOVE TO YOU ALL!

Love + Di  
XOXOX

(A CHRISTMAS "WAVE" FROM THE CRITTERS!)



 CAPONE  
 ZOEY  
 HALA

# MERRY CHRISTMAS 2004!!

 SKITTLE

 PIKACHU  
 ALOHA OI

(AS IN "JUST WHEN YOU GET USED TO WELCOMING THE YEAR, IT CHANGES ON YOU!!")

"Grace be unto you and peace, from God our Father, and from the Lord Jesus Christ. I thank my God upon every remembrance of you." Phil 1:2&3..... you know, these days, those words are so true - we wish peace for you all and we are so thankful to have such dear friends and family in our lives and hearts!

Our surprise blessing came into the world this year - Tiana Danielle - our 3<sup>rd</sup> grandchild!! What a little sweetheart she is!! She came to us 2 months early and scared us all a bit first - weighing in at 3lbs 6 oz!! Such a tiny little new life!! But she is chubby and smiley now, laughing with Mom & Dad & trying so hard to get in on the fun with Kekoa & Kaila! She just loves watching them and trying to play - and they are soooooo good with her!! We went to Maui to see Kekoa in his first ukulele recital! It was so cute!! He's learning all his chords & is making us all very proud! PapaMoke keeps trying to teach him the key of "Q"; but he's not biting!! Kaila is becoming a sweet little lady..... She only punched one boy this year so far!! Ok, but he was trying to touch her sister & Mom said "Don't let anyone touch your sister!" .....! She is such a doll, long blonde hair & blue eyes like her Popo. She's gotten quite attached to PapaMoke & he just beams when she says things like "Come sit by me Papa & then I'll be happy!" awwww.....

Eddie has been increasing his irrigation & landscaping clients - lots of building going on down at the West End of the island - so he's met lots of interesting people & is working on some really prime properties. Going to work is not so bad when you look around & see gorgeous seascapes & landscapes all around! Mobettah.net is still doing well & the wireless is spreading to the far ends of the island. But his favorite thing in life is just being PapaMoke - very fulfilling!!

I, of course, am still at the Credit Union - I graduated from a 3 year management course at Pomona College this year - (see Mom? I finally went to college!!) But I go with Eddie a lot on weekends & help with his landscaping jobs. ("Help"= I bring him water, food, hand him tools & mostly just keep him company!) Hey, togetherness is an 'all the time' celebration, not just on special occasions!! We are thankful to still be "us" after all these years! Each day is a new blessing!

.....ok, I have good news and bad news..... The good news is, a really cute, smart, funny little black kitty showed up at our house & decided to stay (even the dogs don't seem to mind her). Her name is Zoey & she even tries to play with the dogs! (No biting from them, Capone & Hala just slobber on her!) The bad news is, about 2 weeks later, Pikachu, my black fuzzy kitty, ended up on the white line - in exactly the same spot we lost her sister, Teeta, 2 years ago!! I dunno, Ollie, these kitties just don't get it!! For Pete's sake, stay off the road!! Her friend, Skittle, was a little upset by all this, but she seems to be working out her depression by bopping the new kitty on the head when she thinks I'm not looking. Oh yeah, then she sees me & purrs & rrrruubbbss up against her like "What did I do???" The sociology of cats, good grief!

Ok, that's it for now - and if the stresses of life seem to be bearing down on you, remember: "I will keep him in perfect peace whose mind is stayed on me." AMEN! LOVE + BLESSINGS, EDDIE + DI



# Mangroves: Is clear-cutting a solution?

by Casey Twanow

In the Kahalu'u mangrove stand in Kāne'ohe Bay, the air smells like fresh, salty mud. Prop roots drop down from smooth branches overhead and plunge into the mud like stubby fingers.

Early in the morning you might find University of Hawai'i graduate student Amanda Demopoulos crawling and climbing through the tangle of red mangroves, *Rhizophora mangle*, collecting leaves and mud.

Mangrove trees, which belt two-thirds of tropical shorelines, are not native to Hawai'i. Since the American Sugar Company introduced mangroves here in 1902 to prevent erosion, they have been planted or spread to all of the main Hawaiian Islands.

Today the troublesome trees sprawl across more than 2,000 acres of Hawai'i coastal mudflats, overgrowing the habitat of endangered native shorebirds, the *ae'o* (Hawaiian stilt), *'alae ula* (Hawaiian gallanule), *'alae keo'keo* (Hawaiian coot) and *koloa* (Hawaiian duck). Mangroves also harbor shorebird predators like the night heron and the introduced mongoose, cattle egret, and rat.

On O'ahu, mangrove areas in Nu'upia Ponds and He'eia State Park have been clear-cut by state and federal environmental agencies to restore shorebirds' wetland habitat, and there are plans to clear areas of Pearl Harbor. But mangroves' role in Hawai'i's ecosystem is not fully understood. With Sea Grant funding, Demopoulos studies the Kahalu'u mangroves to determine if native organisms rely on mangrove habitat and to clarify the effects of clear-cutting mangroves on the coastal environment.



UH graduate student Amanda Demopoulos notes leaf litter in a quadrat of mud below a suspended basket. —E. Quinones photo

Each month Demopoulos gathers leaves from mesh baskets suspended in the mangrove canopy and leaf litter from a quadrat of mud below each basket. Her observations suggest more leaf matter is

produced in and flows out of mangroves in Hawai'i than in areas where they are native, possibly because Hawai'i lacks certain herbivorous crabs, insects and isopods to limit production.

These bountiful mangrove leaves, however, do not seem to support the coastal food web. From chemical analyses of leaf matter and organisms from Kahalu'u,



Demopoulos perches in a tangle of red mangroves to retrieve leaves that have fallen into a mesh basket suspended in the canopy. —G. Demopoulos photo

Demopoulos says, "Sandflat and mangrove species seem to depend on algal or bacterial food sources instead."

Even if mangroves are not a main food source, they could be a habitat for native species such as mud-dwelling worms and crustaceans.

To find out if the benthic invertebrates mangroves shelter our mainly native Hawaiian fauna or alien species, Demopoulos is analyzing four years of mud core samples from Kahalu'u.

If she finds a high proportion of alien species in the mud, it is possible that clear-cutting benefits native Hawaiian species by eliminating a "foothold" niche that is easily colonized by invasive alien species.

Some mangrove areas must be cleared to maintain ancient fishponds and modern drainage channels. But in areas where environmental agencies opt to cut mangroves and restore native mudflat habitat, Demopoulos suggests increased monitoring of the effects of mud-dwellers, coastal erosion, and water quality on nearby coral reefs.

The success of replanting native vegetation or leaving the mangrove root systems in place to reduce erosion after clear-cutting also needs to be determined.

Demopoulos recently learned that her Kahalu'u mangroves will be clear-cut and the area will become a regional park. Although it will interfere with her study, Demopoulos sees an important new research opportunity: "I would like to see how this drastic change affects the Hawaiian coastline." 🐟

(Casey Twanow is a graduate student at Boston University's Knight Center for Science and Medical Journalism. She participated as a 2002 summer intern with Sea Grant's Science Writers Project.)

Makai.  
Sea Grant  
newsletter  
Fall 2002 Makai 3

*Dartagnon and Julie-Ann Bicoy*  
*Request your presence at the Wedding Ceremony*  
*Of their daughter*

***Phoebe-Ohia Mei-Ing Bicoy***

To

***Lopaka Kanikaio Inciong***

Son of  
*Alfred and Malia Beaver*

Saturday, July second two-thousand and five  
*Our Lady of Seven Sorrows Catholic Church*  
*11 o'clock AM*

***Reception***

*Fred and Evelyn's Home*  
*561 Kam Hwy*  
*13 miles east of Kaunakakai Town*  
*Pupu's 3:00 PM*  
*Dinner 4:00 - 8:00 PM*



*Dartagnon and Julie-Ann Bicoy*  
*Request your presence at the Wedding Ceremony*  
*Of their daughter*

***Phoebe-Ohia Mei-Ing Bicoy***

To

***Lopaka Kanikaio Inciong***

Son of  
*Alfred and Malia Beaver*

*Saturday, July second two-thousand and five*  
*Our Lady of Seven Sorrows Catholic Church*  
*11 o'clock AM*

***Reception***

*Fred and Evelyn's Home*  
*561 Kam Hwy*  
*13 miles east of Kaunakakai Town*  
*Pupu's 3:00 PM*  
*Dinner 4:00 - 8:00 PM*





Phoebe Bicoy  
Apt. 209  
337 Ululani St.  
Hilo, HI 96720





1 20' 15' 10' 05' 5

4

3

2

1

20'

15'

10'

05'

5

Kaunakakai Channel

# HAWAII Molokai

The Friendly Isle

published by  
University of Hawaii Press  
Honolulu 96822

by James A. Bier  
Department of Geography  
University of Illinois at Urbana-Champaign

LANA'I

MAUNALO-A-KAUNAKAKAI  
17 miles  
Kaloko o'ia (17 miles)

KALAWA

KALOOLA

O'AHU

A

B

C

21°

10'

05'

120°

115°

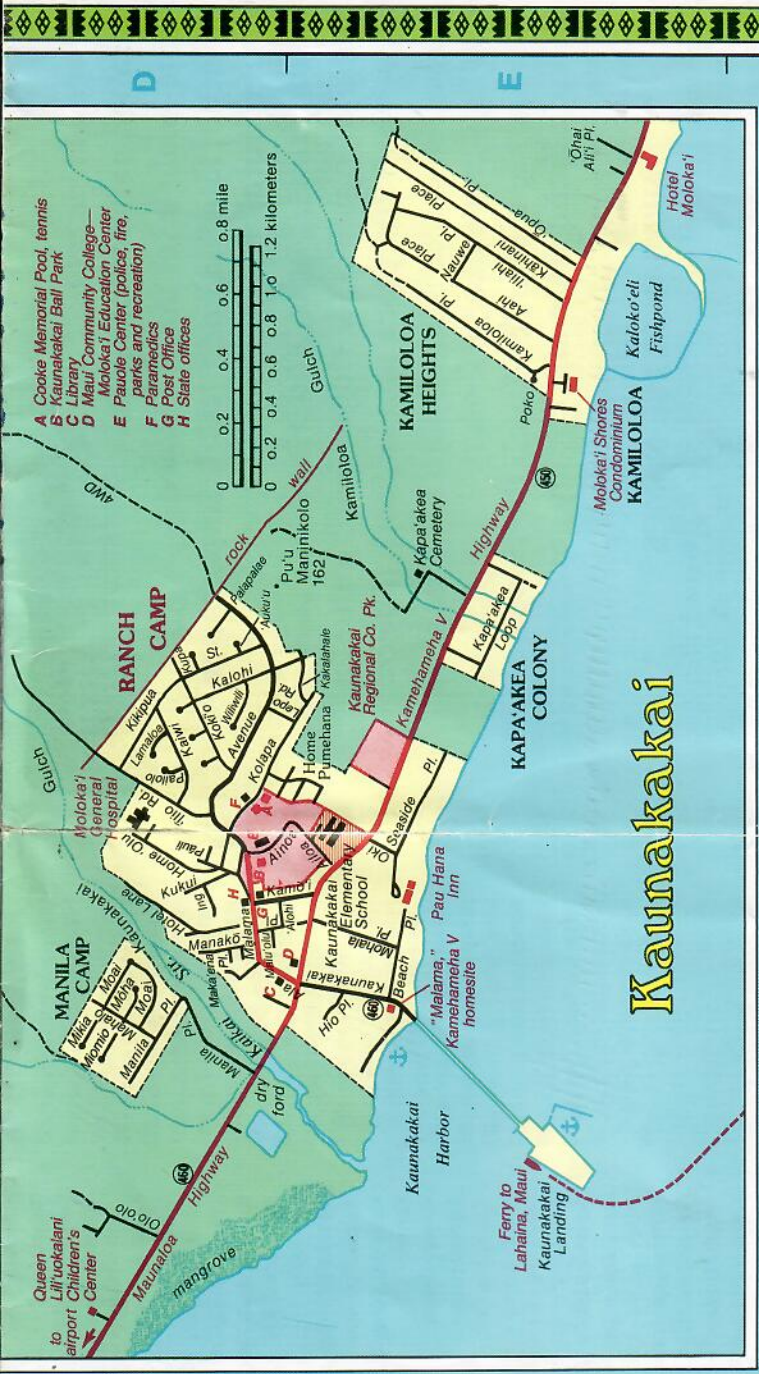
110°

105°

100°

5





# Kaunakakai

**PRONUNCIATION MARKS**  
 The glottal stop, ' is similar to the stopping of sound between the *oh's* in English *oh-oh!* Macrons denote long, stressed vowels (ā, ē, ī, ō, ū).



**PLEASE KŌKUA.** Help preserve all archeological sites for future generations. Defacing petroglyphs and moving or destroying material from ancient heiaus, trails, and other features erase a part of Hawai'i's heritage.

	Town		Perennial stream		State highway number
	Village/settlement		Irrigation ditch or water pipeline		Mileage between red dots
	Site or locality		Waterfall and length in feet		Golf course
	District boundary		Coral reef		Park, county beach, preserve
	Elevation in feet		Intermittent stream		Point of interest
	Cave		Swamp or marsh		Small-boat harbor
	Forest reserve				
			Principal through		
			Secondary through		
			Other (paved, gravel, graded dirt)		
			Ungraded dirt or 4-wheel drive		
			Foot or pack trail		

All rights reserved

Copyright © 1977, 1982, 1990 by University of Hawaii Press







157°00' 55' 50' 45' 21° 10' 05'

**KALAUPAPA NATIONAL HISTORICAL PARK**

**Kalaupapa Peninsula**  
Kaupikiawa Pt.  
Keanao'o (cave)  
Keanaluaehine (cave)  
Papa'oa (flat)  
Papa'oa Bay

**Waikolu**  
Waikolu Falls  
Waikolu Pt.  
Waikolu Pt. (cave)  
Waikolu Pt. (cave)

**Kamakou**  
Kamakou Pt.  
Kamakou Pt. (cave)  
Kamakou Pt. (cave)

**Kamalo**  
Kamalo Pt.  
Kamalo Pt. (cave)  
Kamalo Pt. (cave)

**Kaunakakai**  
Kaunakakai Pt.  
Kaunakakai Pt. (cave)  
Kaunakakai Pt. (cave)

**Paipaho**  
Paipaho Pt.  
Paipaho Pt. (cave)  
Paipaho Pt. (cave)

**Paipaho Channel**  
Paipaho Channel

**Maui Channel**  
Maui Channel

**Kaunakakai-Pu'u O Hoku Ranch**  
25 miles

012798 1041 3

MAUI