

G. H. BALAZS

MOLOKAI

18-23 JULY 2004

2004 BALAZS

10 SEPT, 2000  
Sunday

Palaau with ED & LA  
to search for Halophila P. 9

National Brand  
43-571  
Made in USA

PAX  
550  
7E  
JUN  
DUN

18 - 23 JULY 2004 PALAAU w/ MAREE  
Friday PICKUP DAYS = 5  
P. 21  
N = 69 (8 recaptures) (19 Tumbled)  
P = 21

7/19/04	= 12	Monday
7/20	20	
7/21	12	
7/22	17	
7/23	8	
	<hr/>	
	69	

G. H. BALAZS

Molokai Ranch  
552-2741

660-2883  
660-2884

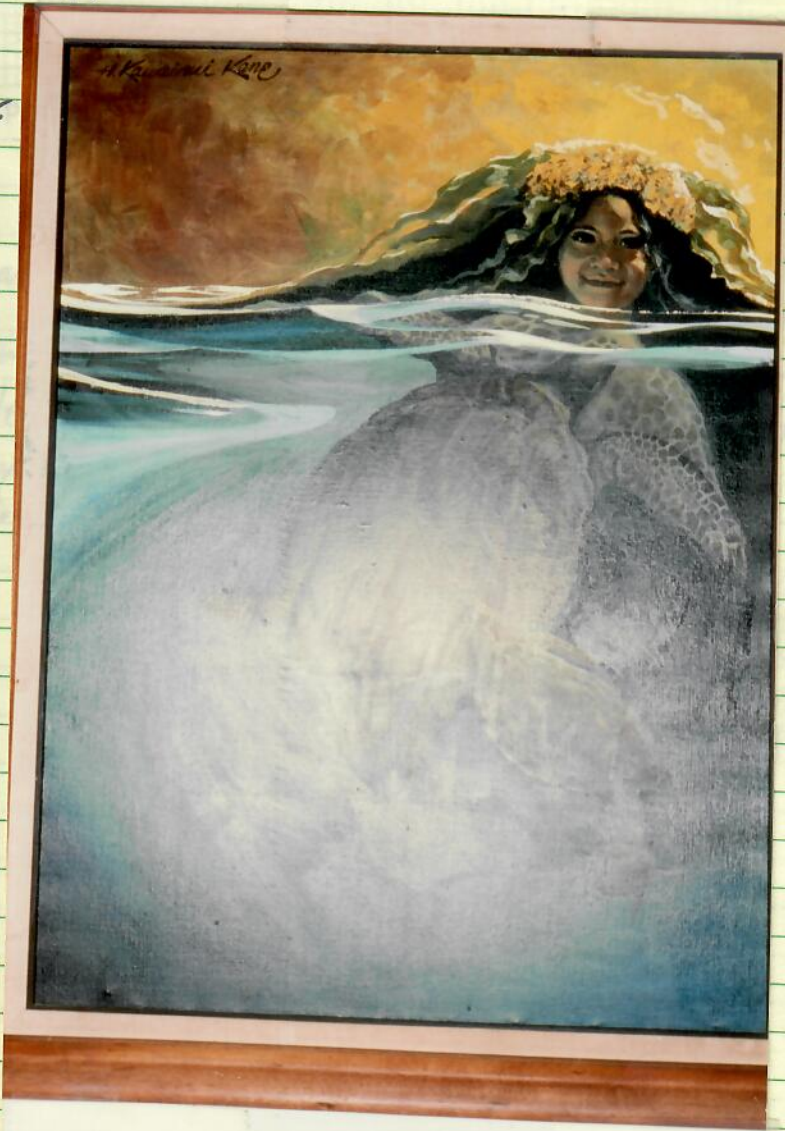
"Dakine"

Car Rental

553-3880

Yolanda Reyes  
Stable - Arena

2308  
4PM  
AUCHELLE



good

Kauila - Mystical Sea Turtle of Punaluu  
Painting by H. Kawainui Kane

HE LĀ HONU - TURTLE DAY 1995

2  
ERIC

Dennis  
KO 558-8362  
(858) 792-1554

Leslie  
Girl friend's mother

Eric - 558-8362  
Jim  
Michelle

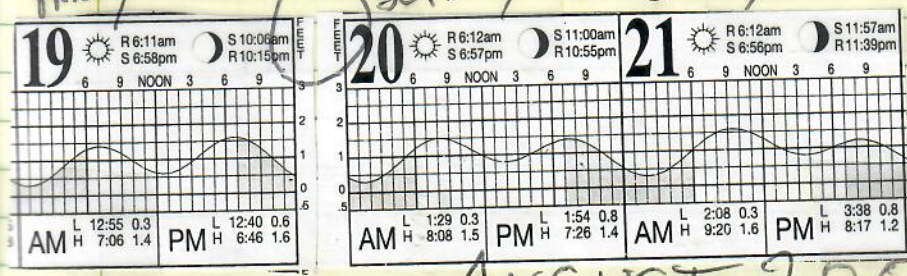
Kaula - Mystical Sea Turtle of Punaluu  
Painting by H. Kawainui Kane

HE LA HORU - TURTLE DAY 1995

August 2000  
Friday

Bill & ERIC  
MONITORED  
HAWAIIA  
Saturday

Sunday



# AUGUST 2000

Telecan w/Bill DAY 1 7/23/00 Hakawa - lots of pits.  
first seen - assumed successful

same turtle? → DAY 13 8/5/00 one large pit - unknown if good.

9 day cycle? DAY 19 8/11/00 lots of pits - assumed good.

+19 days = 8/30 ∴ monitor <sup>mon, Tues, wed.</sup> 8/28-8/29-8/30

DAY — 8/31/00 night - call from Bill at 10:30 pm - hawk <sup>Bill</sup> up and nested. Another call 3 AM (9/1) saying they don't have the turtle.

Date: Fri, 28 Jul 2000 11:49:44 -1000  
 From: Bill Puleloa <puleloa@aloha.net>  
 To: George Balazs <gbalazs@honlab.nmfs.hawaii.edu>  
 Subject: Halawa e'a

+ Reddy digs  
 Thursday  
 Night 8/24/00

MOLOKA

(1) No signs this morning. My guess is that she did her business for now. I'm hopeful she'll reappear in another week or so.  
 (2) While doing my rounds this morning, I met up with someone who stumbled across what I believe to be FFS 24198 while diving at Mapulehu, not too far from Wailua, her "hale". The informant had a long and hard look at the mounted transmitter and described it to me in great detail. It was too obvious not to notice he said! His guess was that about 2 years ago when he encountered the turtle. This fits in nicely with the time frame of your tracking data.  
 (3) Got some feedback from Marylou Foley (Marshalls). As I suspected, she's with the Outrigger Hotel and is trying to drum up eco tourism business. I'm not too keen on the idea. The atolls she mentioned are remote and pristine for the moment. From a resource prospective, nothing good can come by having a multitude of people visiting them. There has to be some places on earth that should be treated as natural heritage areas free from human predation. Nevertheless, I'm going to try to weasel my way back to the Marshalls (on their expense account without compromising my principles) and try to at least obtain some genetic stuff for Peter Dutton if nothing else.

Date: Mon, 7 Aug 2000 09:53:08 -1000  
 From: Bill Puleloa <puleloa@aloha.net>  
 To: George Balazs <gbalazs@honlab.nmfs.hawaii.edu>  
 Subject: new action

8-5-00

George....She came out again Saturday night (5th) and successfully did her business, same day. If this is the same animal of the June 23rd incident, then it appears that she's on a 2 week cycle. We'll keep checking. If something happens this coming weekend (i.e. 20 days ala Big Island) then we'll know if we're dealing with a second animal.

Date: Mon, 14 Aug 2000 17:04:21 -1000  
From: Bill Puleloa <puleloa@aloha.net>  
To: George Balazs <gbalazs@honlab.nmfs.hawaii.edu>  
Subject: 3rd nesting

As luck would have it, there was a third haul out Friday night (11th) which suggest perhaps the involvement of a second animal. Eric and I drove down this morning to confirm it and there's no doubt. This latest nesting (19 days after the first incident) throws a ringer into our calculations. Is this animal number one on a 20 day cycle ala Big Island, or a new second animal coming ashore starting another sequence of nesting events? We'll leave that call up to your good judgment. Eric is planning to camp out this weekend either way.

Date: Tue, 15 Aug 2000 14:45:10 -1000  
From: Bill Puleloa <puleloa@aloha.net>  
To: "George.H. Balazs" <gbalazs@honlab.nmfs.hawaii.edu>  
Subject: Re: 3rd nesting

I planned to spend the night with Eric too. We'll use my cell and call you at home if there's any action. You can come the following morning, not necessarily on the very first flight for that matter. If you wish, Eric and I can even transport the animal to the airport where you can attached the transmitter in the DOA baseyard (away from prying eyes) after which you can catch the next plane back to Honolulu. Eric and I can then return to Halawa for the release. Your call.

*Bill Puleloa*

Date: Tue, 22 Aug 2000 08:34:34 -1000  
 From: Casey Jarman <jarman@aloha.net>  
 To: "George H. Balazs" <gbalazs@honlab.nmfs.hawaii.edu>  
 Subject: Re: Cycle

[The following text is in the "ISO-8859-1" character set]  
 [Your display is set for the "US-ASCII" character set]  
 [Some characters may be displayed incorrectly]

Geo. intervals:

We just had 2 turtles (Kamehame) here that returned on exactly the same schedule at the interval between first 2 nests, 18d and 19d -- the latter one got a transmitter. The Kawa turtle had a 23d interval BUT with several days of crawling/false nesting prior to each -- she's crawling now again, but at 17-18d, no crawl last night, so will go to try to catchup to her tonight..... They have one turtle recorded on a 28d interval, but my guess is they slept thru a nesting at 14d!!

Our Maui turtles have been on 18-21d intervals in last 3 yrs.

Hope this helps...my guess is that you'll have to deal with wide brackets of time on Molokai, esp. if she's false nesting and "experience" with interpreting this on the beach is low.

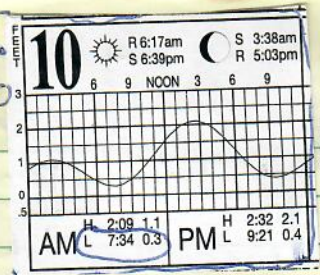
just faxed you the transmitter info.....I'll not be back to the office till end of day, so if need to get me, please call and leave msg....i check msg's often. later, Bill

-----  
 > From: George H. Balazs <gbalazs@honlab.nmfs.hawaii.edu>  
 > To: Bill Gilmartin <jarman@aloha.net>  
 > Subject: Cycle  
 > Date: Monday, August 21, 2000 3:38 PM

>  
 > What's the interesting interval of the Kawa turtle you've been tracking?  
 > I'm asking to relate to the Molokai situation.  
 >  
 > Separate topic, caught my eye. The 332Z you put the radio on, does she  
 > also carry 333Z?  
 >  
 > Aloha, Geo.



Dino flagellate protocol Sept. 2000



The protocol I have been following:

30 grams macroalgae (or seagrass) shaken with 100 mL of seawater (from bag/collection) 30 times, save 50 mL of the resulting seawater/epiphytes with 5 mL 10% buffered formalin. As you know, I take two separate 30 grams samples for replication.

In the case of the Halophila, I have been picking it w/rhizomes (at least one replicate, one replicate can be leaves only), to make it comparable to Jan's historical data.

Thanks for picking up for me, George. Sorry! I'll be conscientious of situations like this in future.

- look box <sup>bucket</sup> Az?
- Tables
- Garbage bags
- postal scale
- pipettes
- formalin
- graduated cylinder
- filtration vials
- zipper bags
- Toilet paper
- marking pen
- <sup>plastic</sup> bottle for sea water
- protocol xerox
- salinity/temp

3m deep = 60 m<sup>2</sup> / 3m = 20 m<sup>2</sup>

8

Date: Wed, 10 Jun 1998 09:39:36 -1000 HST)  
From: Shawn Murakawa <smurakaw@honlab.mfs.hawaii.edu>  
To: "George H. Balazs" <gbalazs@honlab.nmfs.hawaii.edu>  
Subject: Re: Dr. Landsberg

- 1) Collect around 30g algae (not too much salt water) in plastic bag
- 2) Pour water from bag into graduated cylinder
- 3) Add water to make 100ml
- 4) Take algae out and weigh 30g of algae
- 5) Pour 100ml water + 30g algae back into bag
- 6) Seal then shake bag 30 times
- 7) Decant 50ml of water into larger labeled plastic bottle then add 10ml of 10% buffered formalin, swirl
- 8) When ready, swirl bottle 15 times
- 9) Pipet 10ml (couple ml from top of vial) water/formalin mixture into scintillation vials
- 10) Put parafilm on top of scintillation vials before sealing

Rinse measuring containers between each sample with salt water and be sure to change pipets with each sample. If you have any questions please feel free to email her at home.

*Yvette Sml  
10/10/98*

KAAU - HAWAII

10 Sept. 00  
Sunday

Objective = Collect Halophila for  
Yve's thesis study - She didn't find any  
at Palau during 8/00 trip. ~~at Palau~~ <sup>Hobawa</sup>

black  
road

Depart Island Ave 5:50am W/LA for  
Molokai - Dollar Car Rental #42. Drove to  
Mauna Loa to get Palau gate key, Darlene,  
TO "Human Research" met Ed Medeiros - Drove to  
Ukiahue (one locked gate). Used white bucket "look box"  
to search for Halophila. <sup>Caularia</sup> ~~Caularia~~ serrulata found,  
has appearance of Halophila. Low tide - walked  
and search in shallows, then walked zig zag up  
and down, in and out, to waste/lower chest deep  
water - 200-300m (or more) from shore -  
good viewing conditions - None found - walked  
to 100 ft. - Ed met us - zig zagging  
off shore near shore - none found, only Caularia  
serrulata. Drove out and stopped evening?  
to visit w/ Shrimp farmers Becky Ewen.  
husband & son. A Dan helped  
Bill at Palau - howzbill got away.

is?  
it?

red

Ed's LAST NAME?  
Phone #, how to contact him? ERIC??  
to Hotel Molokai for lunch w/ Ed & Diane (Molokai  
Hobawa) <sup>Steger Sandorich</sup>  
Drove to, Hobawa - Saw Julie Broy, Fred Broy,  
Fred's wife, Dawn, Dayton & wife Duffie, Ayla,  
and Ed's Mother. Walked right side  
of Hobawa beach - photos. Saw two places  
where eroded body fit seemed to exist -  
a short distance from start of beach; the  
other under Messerschmidia (Beach Heliotropis  
tree). Lots of (piles of) dried sugar cane  
(?) washed up. Hatchlings would crawl  
over it. Drove back to airport  
LA departed 5:50 pm DASH, I left  
6:50 pm DASH.

## GROWTH RATES AND INCIDENCE OF FIBRO-PAPILLOMATOSIS IN HAWAIIAN GREEN TURTLES UTILIZING COASTAL FORAGING PASTURES AT PALAAU, MOLOKAI

George H. Balazs<sup>1</sup>, William Puleoa<sup>2</sup>, Edwin Medeiros<sup>3</sup>, Shawn K.K. Murakawa<sup>4</sup>, and Denise M. Ellis<sup>4</sup>

<sup>1</sup>National Marine Fisheries Service, Southwest Fisheries Science Center, Honolulu Laboratory, 2570 Dole Street, Honolulu, HI 96822-2396, U.S.A.

<sup>2</sup>State of Hawaii, Division of Aquatic Resources, P.O. Box 248, Kualapuu, HI 96757, U.S.A.

<sup>3</sup>Friendly Isle Fishing Company, P.O. Box 1216, Kaunakakai, HI 96748, U.S.A.

<sup>4</sup>Joint Institute for Marine and Atmospheric Research, c/o 2570 Dole Street, Honolulu, HI 96822, U.S.A.

Long-term studies of green turtles, *Chelonia mydas* (honu), in the Hawaiian Islands have been underway to obtain comprehensive data on growth rates, health status, population trends, food sources, habitat use, reproductive migrations, and underwater behaviors. Systematic monitoring for 24 consecutive seasons (1973-96) at the principal breeding site of French Frigate Shoals (FFS) has documented a significant increase in nesting females (Wetherall *et al.*, 1997). However, fibropapillomatosis (FP), a debilitating and often fatal sea turtle disease, is currently an inhibiting factor to the full recovery of the Hawaiian green turtle population. The disease involves the formation of multiple fibrous tumors up to 25 cm in diameter on the eyes, in the mouth, and on all skin surfaces. Other sites affected less frequently include the carapace, plastron, and internal organs. The increase of FP and its epidemiological aspects in Hawaii have been documented in a major foraging aggregation at Palaa, Molokai. Some of the significant results of this work are summarized in this paper.

Green turtles were obtained alive and unharmed as by-catch in a bullpen, a fishing technique similar to the use of pound nets on the U.S. Atlantic coast and fish weirs in the South Pacific, Philippines and Taiwan. From 1982-96, 1,458 green turtles ranging from 34.4 to 89.3 cm in straight carapace length (SCL) were captured, tagged and released along the southern coast of Molokai. During this period a massive increase of FP was recorded, peaking at 61% prevalence in 1995 (Fig. 1). A similar increase of the disease also occurred elsewhere in Hawaii from 1982-96, based on data from strandings, in-water research, and other observations.

Two-hundred and three or 13.9% of the 1,458 turtles were recaptured one or more times, of which 171 turtles ranging from 38.0 to 84.6 cm yielded SCL remeasurement data useful for determining growth. A single growth increment was computed for each turtle based on the initial capture measurement and the measurement taken when last recaptured. The time intervals for the 171 growth increments ranged from 3 months to 12.3 years.

The overall mean growth rate was  $2.1 \pm 0.9$  cm/yr. When each turtle was assigned to a 5 cm size category, ANOVA revealed a significant difference in growth for 10 different size classes (Fig. 2). Duncan-Waller analyses showed that growth rates were significantly faster in five of the size classes encompassing 40-65 cm, compared to the 75-80 cm size class (0.9 cm/yr). In addition, growth rates in the 45-50 cm and the 60-65 cm size classes (both 2.4 cm/yr) were also significantly faster than the 80-85 cm size class (1.1 cm/yr).

Tumored turtles comprised 46.2% of the 171 turtles recaptured and utilized to compute growth. A significantly slower ( $P > 0.05$ ) rate of growth took place in tumored turtles (1.9 cm/yr) than in non-tumored turtles (2.2 cm/yr). ANOVA showed a significant difference in the rates of growth between four levels of tumor severity (Fig. 3). The depression of growth, as identified by these data, should be considered as a minimal estimate of the impact of the disease. Growth rates computed for nearly all of the afflicted turtles in this study included unknown intervals of time, prior to the formation of tumors, that served to bias the growth data.

Only a few of the 1,458 tagged turtles have been resighted away from Molokai. Four adults were seen in the seasonal migrant breeding assemblage at FFS after being tagged at Molokai. In addition, two adults tagged at FFS were

### PROCEEDINGS OF THE SEVENTEENTH ANNUAL SEA TURTLE SYMPOSIUM

4-8 March 1997  
Orlando, Florida U.S.A.

1982-96  
1,458  
203 Recap

recaptured at Molokai. An adult male fitted with a satellite transmitter at FFS was tracked to Molokai on its post-breeding migration (Balazs and Ellis, in press). These data lend strong support to other findings that demonstrate a high degree of residency by Hawaiian green turtles for their foraging areas (Balazs *et al.*, 1994).

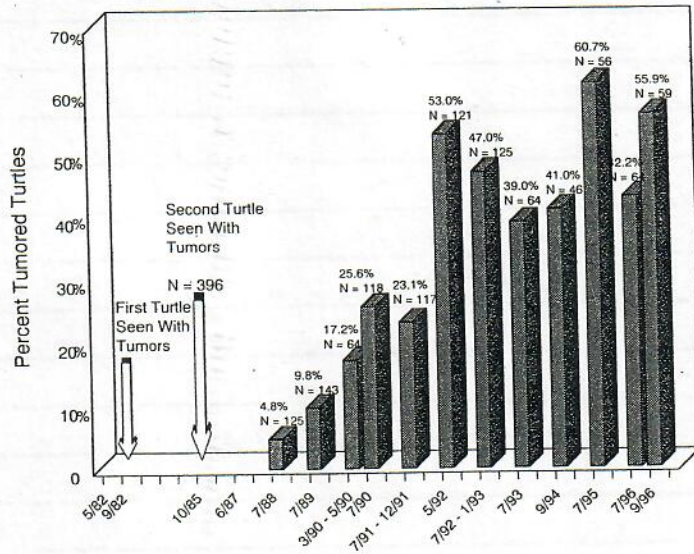
LITERATURE CITED

Balazs, G.H., W.C. Dudley, L.E. Hallacher, J.P. Coney and S.K. Koga. 1994. Ecology and cultural significance of sea turtles at Punalu'u, Hawaii. U.S. Dep. Commer., NOAA Tech. Memo. NOAA-TM-NMFS-SEFSC-351:10-13.

Balazs, G.H. and D.M. Ellis. In press. Satellite telemetry of migrant male and female green turtles breeding in the Hawaiian Islands. U.S. Dep. Commer., NOAA Tech. Memo. NOAA-NMFS-SEFSC.

Wetherall, J.A., G.H. Balazs and M.Y.Y. Yong. 1997. Statistical methods for green turtle nesting surveys in the Hawaiian Islands. U.S. Dep. Commer., NOAA Tech. Memo. NOAA-NMFS-SEFSC.

Figure 1. Incidence of fibropapillomatosis observed in green turtles captured from 1982-96 at the



Palaau foraging pasture along the southern coastline of Molokai.

From: Bill Puleloa <puleloa@hawaii.net>  
 Subject: night of 27th

Just a long, dark, cold, and wet night. Cells for tonight are 1 in 1000. The night is very dark. The stars are very bright. The moon is very bright. The clouds are very dark. The wind is very strong. The rain is very heavy. The temperature is very low. The humidity is very high. The air is very thick. The water is very cold. The ground is very wet. The sky is very dark. The sea is very rough. The waves are very high. The current is very strong. The tide is very low. The moon is very bright. The stars are very bright. The clouds are very dark. The wind is very strong. The rain is very heavy. The temperature is very low. The humidity is very high. The air is very thick. The water is very cold. The ground is very wet. The sky is very dark. The sea is very rough. The waves are very high. The current is very strong. The tide is very low.

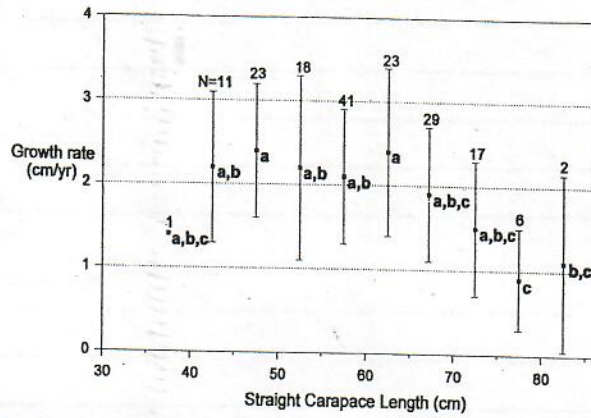


Figure 2. Mean and standard deviation for the rates of growth divided into 5 cm size classes exhibited by green turtles tagged and recaptured at Palaau, Molokai. Means bearing the same alphabet letter (a, b, c) are not significantly different ( $P > 0.05$ ).

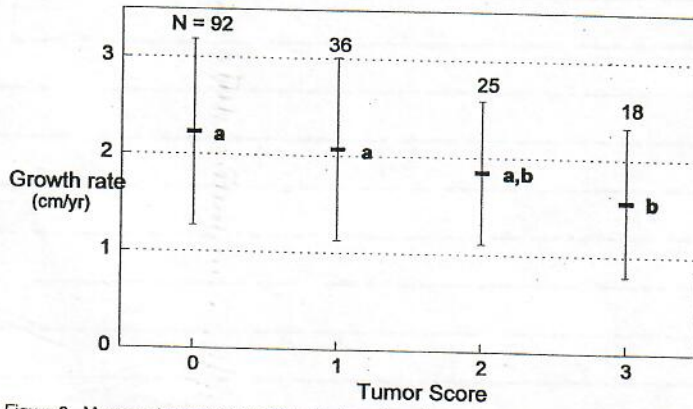


Figure 3. Mean and standard deviation for the rates of growth exhibited by four groups of green turtles tagged and recaptured at Palaau, Molokai. 0 = no visible tumors, 1 = lightly tumor afflicted, 2 = moderately tumor afflicted, and 3 = heavily tumor afflicted. Means bearing the same alphabet letter (a, b) are not significantly different.



U.S. DEPARTMENT OF COMMERCE  
National Oceanic and Atmospheric Administration  
NATIONAL MARINE FISHERIES SERVICE  
Southwest Fisheries Science Center Honolulu Laboratory  
2570 Dole St. • Honolulu, Hawaii 96822-2396  
(808)983-5360 • Fax: (808)983-2902

September 8, 2000

5 PAGES

To: Mr. James Duvauchelle  
Molokai Ranch - *Livestock office*  
Fax: 552-2308  
Tel: 552-2741

From: George Balazs *[Signature]*  
Research Biologist  
Leader, Marine Turtle Research Program  
Cell: 286-2899  
Office: 983-5733

Subject: Request for cattle gate key for vehicle access to Waikane, Pala'au on  
September 10, 2000

Aloha,

I spoke by telephone with Yolanda yesterday and she described your rules for borrowing the gate key to Pala'au. My reason for wanting to enter the area for a few hours on Sunday morning (9/10/2000) is to collect small samples of seaweed relating to our on-going research of Hawaiian sea turtles. The two persons going with me will be Ms. Laurie Allen and Mr. Ed Medeiros. The key will be returned on the same day Sunday by 2 p.m.

I will phone your office later this morning. Mahalo for your consideration.



GEORGE H. BALAZS  
ZOOLOGIST AND LEADER  
MARINE TURTLE RESEARCH  
and

Regional Vice Chairman for the Pacific Islands  
IUCN Marine Turtle Specialist Group

HONOLULU LABORATORY  
SOUTHWEST FISHERIES SCIENCE CENTER  
NATIONAL MARINE FISHERIES SERVICE  
2570 DOLE STREET  
HONOLULU, HAWAII 96822-2396 (808) 983-5733  
Email: gbalazs@honlab.nmfs.hawaii.edu Fax: (808) 983-2902  
Report turtle strandings: (808) 983-5730

Date: Mon, 28 Aug 2000 08:22:50 -1000  
From: Bill Puleloa <puleloa@aloha.net>  
To: George Balazs <gbalazs@honlab.nmfs.hawaii.edu>  
Subject: night of 27th

Zero! Long, dark, cold, and wet night! Odds for tonight are 1 in 3 as best as I can figure. I've been monitoring my cell phone's signal strength on the way to Halawa to marked the best vantage point. Will be test calling you tonight around 6:30 pm. Please keep your phone on. Discard earlier cellular number you used to contact me. (That phone left last night with Nahoe to Portland). New number: 265-5478

FORM CD-404  
(REV. 7/89)  
U.S. DEPARTMENT OF COMMERCE  
[F]

**SUPPLY, EQUIPMENT, OR SERVICE ORDER**

This Order Number must appear on all invoices and packages. **40JJNF000181**  
6. ORDER NUMBER  
40JJNF000181

1. PAGE 1 OF 1

2. RECEIVING OFFICE NO. 9246

3. CONTRACT ORDERED AGAINST

A. PURCHASE ORDER (See Attached) X

DELIVERY ORDER (See Block 3)

7. SUB

8. S  
A  
U  
D  
P  
D  
P  
R  
L  
E  
I  
S  
E  
S  
R

DENNIS E. KO  
HC01 BOX 901  
KAUNAKAKAI, HI 96748

4. ORDER DATE: 07/27/00

5. SOURCE: 2

9. SHIP TO:  
REFERENCE ORDER NO. 40JJNF000181 (INCLUDE ON SHIPPING LABEL)

U.S. DEPARTMENT OF COMMERCE  
NOAA, NATIONAL MARINE  
FISHERIES SERVICE  
HONOLULU LABORATORY  
2570 DOLE STREET  
HONOLULU, HI 96822-2396

TELEPHONE/CONTACT:

10. 1099 TAX X

11. EMPLOYER I.D.# 149664924

B. REQUISITION NUMBER NFFR6500000181

C. REQUISITIONER INFO: (Last Name, Initial, Phone, Bldg, Room)  
GEORGE BALAZS (808)983-5733

12. LINE ITEM	13. AC CD	13a. QTY REC.	14. DESCRIPTION	15. BUDGET OBJECT	16. ACC LINE	17. QUANTITY	18. UNIT ISSUE	19. UNIT PRICE	20. AMOUNT
01			PROVIDE A WRITTEN REPORT BASED ON FIRST-HAND DAILY OBSERVATIONS OF SEA TURTLE NESTING ACTIVITY ALONG THE EAST SHORE OF MOLOKAI INCLUDING TRACK NUMBERS, TRACK WIDTHS, AND ESTIMATION OF NESTING SUCCESS AND FALSE CRAWLS, 7/30/00 TO 8/30/00.	2527	01	1	JOB	500.00	500.00

21. FOB POINT DESTINATION

22. DISCOUNT TERMS

23. PROMPT PAYMENT X

24. SUB-TOTAL THIS ORDER

\$500.00

25. DELIVERY DATE 09/10/00

26. SHIP VIA

27. ESTIMATED FREIGHT \$0.00

28. TOTAL

\$500.00

D. Reference Order No. 40JJNF000181 (Include on Invoice)

B A  
I D NOAA, NMFS, SWFC, F/SWC2  
L D HONOLULU LABORATORY  
L R 2570 DOLE STREET  
I E HONOLULU, HI 96822-2396  
N S  
G S

29. ACC LINE

30. BUREAU CODE

31. ACCOUNTING CLASSIFICATION

32. DIST

33. AMOUNT

01

14

0FR65008L2BER72

100%

\$500.00

30-50-0006-05-00-00-00  
28L2BER, P72

E. (DO NOT SHIP OR BILL TO THIS ADDRESS)

I O  
S F NOAA, NMFS, SWFC, F/SWC2  
S F HONOLULU LABORATORY  
U I 2570 DOLE STREET  
I C HONOLULU, HI 96822-2396  
N E  
G

ACCEPTANCE: I certify that articles/services annotated above have been received, inspected and accepted as complying with this order as of the date shown.

34. RECEIPT DATE

35. ACCEPTANCE DATE

F. ORDERED BY (Name and Title)  
JANE YOSHIDA/PURCHASING AGENT

G. FOR INQUIRIES CALL:  
JANE YOSHIDA/(808)983-5358

36. ACCEPTANCE SIGNATURE, TITLE & PHONE NO.

37. TYPE SHIPMENT

H. CONTRACTING/ORDERING OFFICER, SIGNATURE  
JANE YOSHIDA *Jane Yoshida*

I. DATE SIGNED  
JUL 27 2000



## The Hawksbill Sea Turtle Project:

An account of all Hawksbill nesting activities

In Kaawili Bay, Halawa Valley

Between July 22<sup>nd</sup> to August 31, 2000

HC-01 Box 901  
Kaunakakai, HI  
96748

D. Eric Co &  
Stephanie Dunbar  
Supervised by:  
Bill Puleloa

The Hawksbill sea turtle, an endangered species, has recently been sought after on the island of Molokai for the purpose of tagging with a radio transmitter. In the past, one has been known to nest on Molokai, at Kaawili Bay in Halawa Valley. The reason for the transmitter would be to observe if this turtle joined other Hawksbills off of the Hamakua Coast, Big Island after nestings. Between July 22<sup>nd</sup> and August 31<sup>st</sup>, we walked the Kaawili Bay beach searching for signs of Hawksbill nesting activity. In all, four incidents of nesting activity were observed. The first nesting activity was believed to be on the night of July 22<sup>nd</sup>. The second nesting activity occurred on the night of August 5<sup>th</sup>, 14 days from the first nesting activity. The third came six days later, on August 11<sup>th</sup>. A failed attempt at capturing and tagging the turtle on August 18<sup>th</sup> led us to believe that the nesting that occurred seven days prior was created by a second Hawksbill turtle, and that the first turtle was on an inter-nesting cycle of more than fourteen days. On August 24<sup>th</sup> a fourth nesting was found. This final nesting was believed to have been made by the second turtle. A second attempt at capturing and tagging the turtle (which we believed to be the first animal) began on August 27<sup>th</sup> and extended to August 31<sup>st</sup> \*. This second attempt was unsuccessful; the turtle did not nest.

\* The second attempt at capturing and tagging a turtle extended past August 31<sup>st</sup>, this was the last day that Eric and Stephanie could participate in the attempt.

Sun	Mon	Tue	Wed	Thr	Fri	Sat
<p>July 23: First nest found at far right end of Ka'awili Bay. Two tracks clearly mark the turtle's route to and from the nest. A third track was found near the nesting site (going into the ocean); however, it's connection to the nest is unknown.</p>	<p>July 24: Did not check</p>	<p>July 25: Walked the length of the beach- no tracks were found</p>	<p>July 26: Walked the length of the beach- no tracks were found</p>	<p>July 27: Walked the length of the beach- no tracks were found</p>	<p>July 28: Walked the length of the beach- no tracks were found</p>	<p>July 22 (day 1 of tracking): One set of tracks seen at far (right) end of Ka'awili Bay; up from water and back without nesting            Night of July 22: NESTING            ACTIVITY # 1            July 29: Did not check</p>
<p>July 30: Walked the length of the beach- no tracks were found</p>	<p>July 31: Did not check</p>	<p>Aug 1: Walked the length of the beach- no tracks were found</p>	<p>Aug 2: Did not check</p>	<p>Aug 3: Walked the length of the beach- no tracks were found</p>	<p>Aug 4: Did not check</p>	<p>Aug 5: Walked the length of the beach- no tracks were found            Night of Aug 5: NESTING            ACTIVITY # 2            (14 days from #1)</p>

Aug 6: Did not check	Aug 7: Nest found at left end of Ka'awili Bay, approximately 50 feet from entrance to the beach. Two distinct tracks were also found leading to and from the nesting site. This nest, unlike the first one that was found, was extremely exposed. (False Nesting?)	Aug 8: Walked the length of the beach- no tracks were found	Aug 9: Walked the length of the beach- no tracks were found	Aug 10: Walked the length of the beach- no tracks were found	Aug 11: Walked the length of the beach- no tracks were found Night of Aug 11: NESTING ACTIVITY #3 (6 days from #2 and 20 days from #1)	Aug 12: A third nesting was found just to the left of the first nesting site. Two, or perhaps three tracks were found, all presumed to be from the same animal. These tracks were the most confusing of any found due to their long lengths and varying directions.
----------------------	--	---	---	--	---	---

Aug 13: Did not check	Aug 14: Walked the length of the beach- no tracks were found	Aug 15: Did not check	Aug 16: Walked the length of the beach- no tracks were found	Aug 17: Did not check	Aug 18: First attempt at capturing and tagging the turtle at Ka'awili Bay. Three observers camped overnight, surveying the beach in shifts until dawn. No turtle was found. After this attempt, it was concluded that the nesting on Aug 11th represented a second animal; and that animal #1 was on an interesting cycle of more than 14 days.	Aug 19: Walked the length of the beach- no tracks were found before breaking camp.
-----------------------	--	-----------------------	--	-----------------------	---	--

<p><b>Aug 20:</b> Tropical Storm Hector; huge runoff from Halawa Stream; much vegetative debris deposited on beach</p>	<p><b>Aug 21:</b> Walked the length of the beach- no tracks were found</p>	<p><b>Aug 22:</b> Did not check</p>	<p><b>Aug 23:</b> Walked the length of the beach- no tracks were found</p>	<p><b>Aug 24:</b> Did not check <b>Night of Aug 24:</b> <b>NESTING ACTIVITY #4</b> ( 19 days from #2 and 13 days from #3)</p>	<p><b>Aug 25:</b> Nest found to the far right of Karawili Bay. Four turtle tracks were found coming and returning to the ocean over the rocky basaltic shoreline separating Kamalaea Bay and Karawili Bay. Both sets appeared to have been made on the same night. Although she dug a hole in the sand, her tracks made their way beyond the beach and into the brush.</p>	<p><b>Aug 26:</b> Did not check</p>
<p><b>Aug 27-Aug 31:</b> Second attempt at capturing and tagging the turtle.</p>						

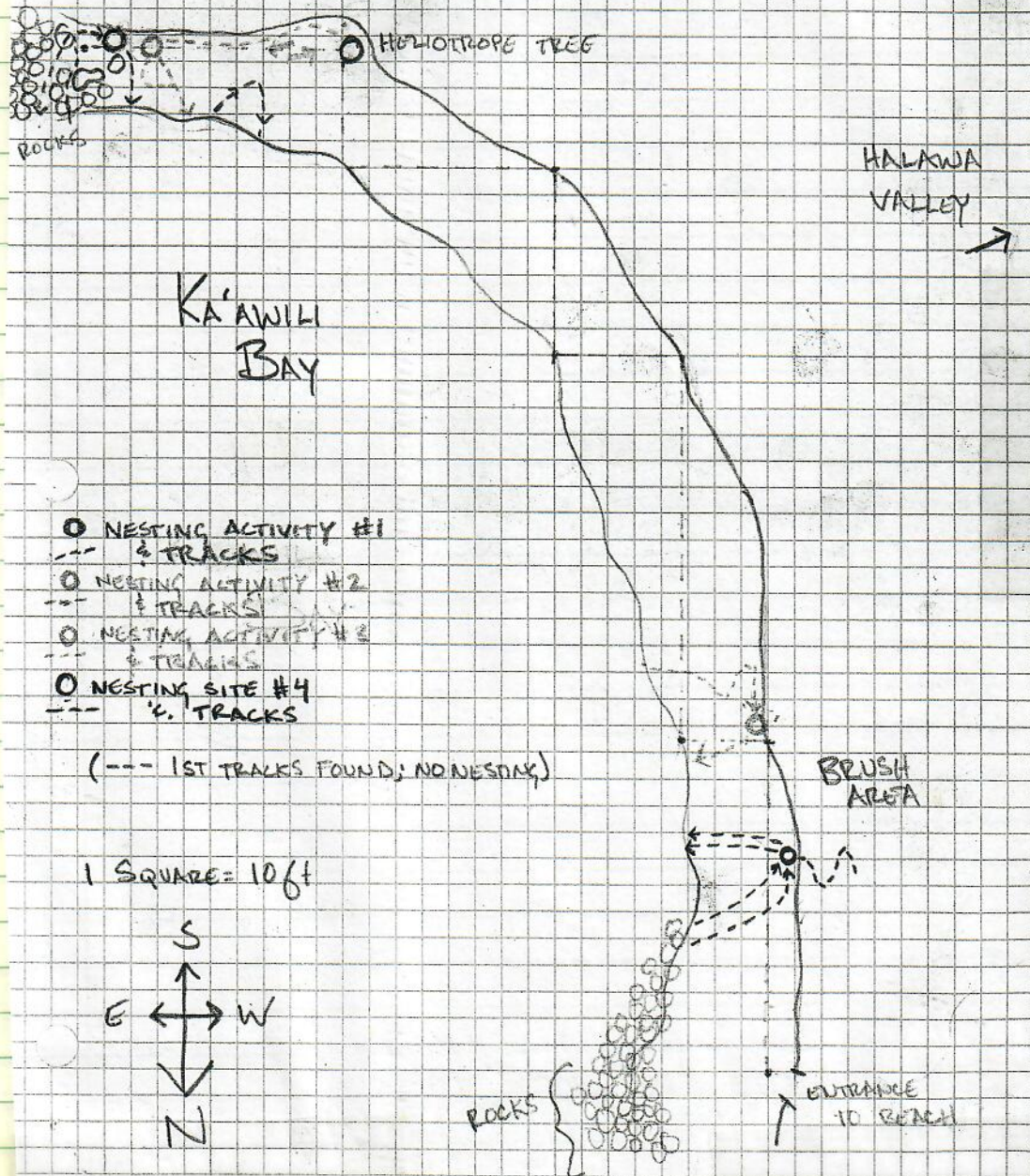
July 2004

HALAWA

19

# MAP OF HAWKSBILL TURTLE TRACKS AND NESTING SITES IN KA'AWILI BAY \*

JULY 22ND - AUGUST 24, 2000



\* MAP WAS MADE USING COMPASS AND 100ft TRANSECT TAPE

12/25

MOLOKAI RANCH, LIMITED  
NOTICE, WAIVER AND INDEMNITY

The person(s) signing below (alone and together called "Permittee"), have requested permission to enter upon land owned to Molokai Ranch, Limited (the "Ranch"). The Ranch will grant you permission to enter onto its land ("Ranch Land") on the dates of \_\_\_\_\_ through \_\_\_\_\_ to conduct \_\_\_\_\_, in consideration of and only if, and on the express condition that, you, the Permittee, acknowledge that you understand the information set forth in this Notice, Waiver and Indemnity, waive any and all claims against the Ranch (including any right to a lawsuit against the Ranch) and indemnify the Ranch against any losses to the Ranch caused by your entry onto the Ranch Land.

A. **NOTICE.** YOU, THE PERMITTEE, ARE HEREBY NOTIFIED THAT:

1. **NO** potable (i.e., drinkable) water is available or provided anywhere on the Ranch Lands, including, but not limited to, the camp grounds and facilities located at Helena Camp and along the coastline areas of the Ranch Land in general. Untreated, non-potable water is unsuitable for human consumption and may result in serious sickness or death, so **DO NOT DRINK** the water from any and all sources located on the Ranch Land.

2. The entire Ranch Land is used for ongoing Ranch operations, including, but not limited to, the use of horses, raising of livestock and crops and other ranching activities. Due to natural and man-made conditions, the Ranch Land contains **DANGEROUS CONDITIONS** which may not be specifically designated by signs and/or other landmarks. You hereby relieve the Ranch from any real or perceived duty to maintain the Ranch Land to eliminate any such natural and man-made dangerous conditions. You must be **alert** and take **extreme care**.

3. The Ranch provides **NO SECURITY** for or on the Ranch Land and has no control over persons who enter the Ranch Land such as hunters and hikers with or without the Ranch's knowledge or consent. You must be **alert** and take **extreme care**.

B. **WAIVER.** By signing below, the Permittee voluntarily and fully **WAIVES** and releases any and all claims for damage or loss to his or her person or property, or to the person or property of any person claiming by or through that Permittee or accompanying that Permittee, against the Ranch, its officers, agents or employees arising out of or in conjunction with his or her entry onto the Ranch Land, use of the land or near shore waters, including without limitation, trails, campgrounds and other facilities contained within the Ranch Land, and participation in any activities within or around the Ranch Land. The Permittee assumes the risk of all dangerous conditions in and about the Ranch Land and waives any and all specific notice of the existence of such conditions.

C. **INDEMNITY.** By signing below, the Permittee voluntarily agrees to fully indemnify the Ranch for all claims, damages and losses (including attorneys' fees) incurred by the Ranch due to the actions or inactions of that Permittee or any person claiming by or through that Permittee or accompanying that Permittee in connection with his or her entry onto the Ranch Land, use of the land or near shore waters, including without limitation, trails, campgrounds and other facilities contained within the Ranch Land, and participation in any activities within or around the Ranch Land.

D. **OTHER.** The Permittee agrees and acknowledges that he or she and persons accompanying Permittee may not for any reason, except an emergency, enter onto any other areas of the Ranch Land other than the permitted areas.

The permission granted to Permittee to enter upon the Ranch Land is further conditioned upon the full compliance by the Permittee with all laws, government regulations, and the Ranch's policies. The Permittee and any person accompanying that Permittee onto the Ranch Land must comport with and conduct himself or herself in accordance with good social behavior and respect for the person and property of all others on the Ranch Land. The Ranch retains the right in its sole discretion to, at any time, revoke any permission to enter onto its Ranch Land and require the Permittee or any person accompanying the Permittee to immediately leave the Ranch Land for any reason whatsoever, including without limitation, failure to comply with any of the requirements expressed, implied or referenced in this Notice, Waiver and Indemnity.

The Permittee shall be fully and legally responsible for the safety, actions and inactions of all persons which Permittee brings onto the Ranch Land.

Print Name: \_\_\_\_\_

Print Name: \_\_\_\_\_

I/we have signed for the following minors:

Name \_\_\_\_\_ Age \_\_\_\_\_

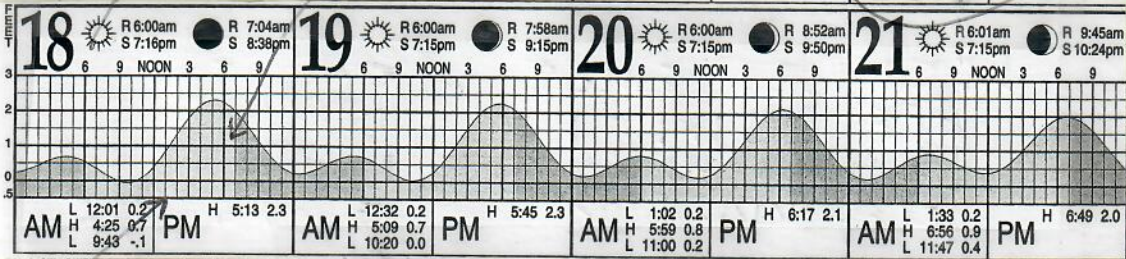
Name \_\_\_\_\_ Age \_\_\_\_\_

Name \_\_\_\_\_ Age \_\_\_\_\_

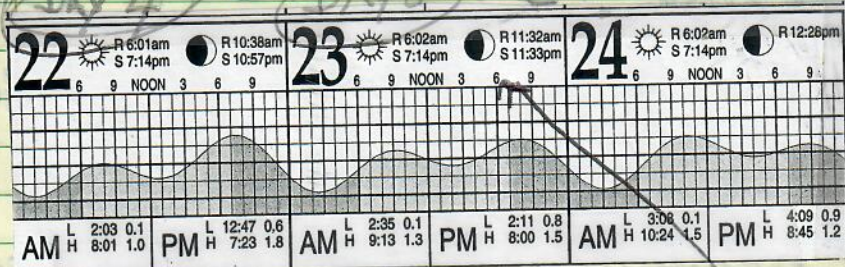
Name \_\_\_\_\_ Age \_\_\_\_\_

# JULY 2004

DAY 3



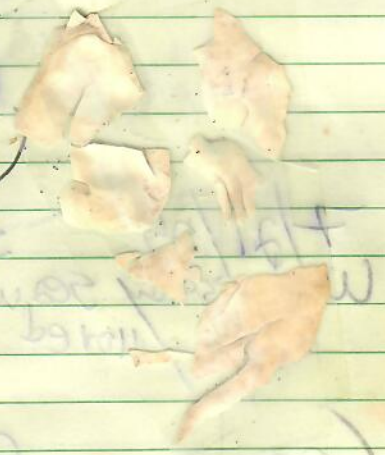
MONDAY DAY 1 (SEGUNDO) SITE A  
 12 Turtles (4 Recap)  
 3 TUMORED  
 TUESDAY DAY 2 (SEGUNDO) SITE A  
 10 Turtles (5 TUMORED)  
 4-TS 1; 1-TS 2  
 (NO RECAPTURE)  
 WEDNESDAY DAY 3 (SEGUNDO) SITE A  
 12 Turtles (2 Recaptures)  
 (4 TUMORED)



THURSDAY N=17 Turtles (2 Recap) SITE B (4 TUMORED)  
 FRIDAY N=8 (0 Recaptures) SITE B (3 TUMORED)

N = 69 total  
 8 Recaptures (~11.6%)  
 19 TUMORED (~27.5%)  
 13 TS 1 (70%)  
 6 TS 2 (30%)  
 0 TS 3 (0%)

depart



~~Need~~

KRISTOPHER GILES  
838 MAKIKI ST  
WAILUKU HI 96793  
(808) 244-4026

FROM  
LANAI  
wrote DATA  
7/20/04 Day 2

7/19 Monday Dinner at Hotel Molokai

Today 41ST wedding anniversary - we celebrated ~~the~~ night

7/20 Tuesday Picked up Cody in the P.M. - Drove to  
Kaulaops lookout - Also tried to  
Stone. Video.

7/21 Wednesday Drove to Halawa Valley. Saw one recent excavation  
(1-2 days old) by Helicopter. Video. Saw exposed eggs  
at the surface - most seemed hatched.

7/22 Thursday TO (Moqmoq - Recent DGS at Sand Beach  
Parillon) between Parillon and Crescent Bay  
Video - one very large "DONUT" shape. (could still see tracks)

7/21/04 SNORKEL ~ 1/30AM - 1PM Segundo  
Wednesday seaward and west to where net has been  
moved TO: GB - SAW 4 Turtles

CH - SAW 4  
RICE SAW 6 (4 outside - 2 inside)

(CONTINUED P<sub>2</sub>)



HONOLULU  
L4 Leave LANAIKA  
NOTE: no earlier 3/12/04 3/13/04  
NOTE: 7/19 with M.A.P.C. Hotel 23  
no later than Molokai

Arrive no later 4/19

4/18 Box dives

4/3-4/8/04 (4 days) box dives

↑ 1 AM  
Box DIVES start

= 7 days of  
Box dives

8 AM - 3/4 PM Surfacing dives

4/8 Box dives end 10 AM then <sup>on</sup> surface  
then 1 AM 4/9 starts deep dive  
spike + slow ascent dives

4/18 8 PM Box dives

4/19 - 2 AM out to bank  
7 AM temp starts to rise.  
- Dates last seen each turtle  
See pattern at Lanaika dive/bank very  
different from migration movements of

Speed of travel ♀s, ♂s

Revised 04/04/01

NMFS, HONOLULU LAB  
Marine Turtle Research  
2570 Dole Street  
Honolulu, HI 96822-2396

DAY 1

①

SEA TURTLE TAGGING FORM

SITE = SEGUNDO

GPS = 21° 5.55' N  
157° 6.04' W

DATE FORM FILLED OUT / /

CAPTURE DATE, LOCATION AND METHOD:

7/19/04 Monday PACAAN Bullpen

PERSON RECORDING DATA:

TUMOR SCORE

2

ORAL TMRS EXT:

YES OR NO

—

EMACIATION CODE

⊗

OLD TAGS:

[Empty boxes for old tags]

NEW TAGS:

REF. LEF. 443A220E23 LH  
4454374B1C RH

STRAIGHT CARAPACE LENGTH:

67.6 cm

WIDTH: 53.9 cm

NOTCH LENGTH: 67.2 cm

DB: ∅ L.O.

VB: ∅ L.O.

CURVED CARAPACE LENGTH:

73.5 cm

WIDTH: 66 cm

HEAD WIDTH: — cm

AXIAL: 27.1 cm

LATERAL: — cm

PPS: YES OR NO OR NE —

SEX: Male, Female or Undetermined U

TAIL LENGTH: T — cm

C — cm

SAMPLES COLLECTED:

RIGHT FRONT FLIPPER WIDTH: — cm

PLASTRON LENGTH: — cm

WEIGHT: — #

DESCRIPTIVE REMARKS:

1#3 Lhfi

2

Revised 04/04/01

NMFS, HONOLULU LAB  
Marine Turtle Research  
2570 Dole Street  
Honolulu, HI 96822-2396

SEA TURTLE TAGGING FORM

DATE FORM FILLED OUT / /

CAPTURE DATE, LOCATION AND METHOD:

7/19/04 Monday Palaau  
 PERSON RECORDING DATA: JBriag BULL PEN

TUMOR SCORE

ORAL TMRS EXT: YES OR NO

EMACIATION CODE

OLD TAGS:


RFL 4452300377 LH  
 LFL 4452397027 RH

STRAIGHT CARAPACE LENGTH: 58.6 cm WIDTH: 57.1 cm

NOTCH LENGTH: 98.3 cm DB:  L.O. VB:  L.O.

CURVED CARAPACE LENGTH: 63 cm WIDTH: 56 cm

HEAD WIDTH:  cm AXIAL: 23.7 cm LATERAL:  cm

PPS: YES OR NO OR NE  SEX: Male, Female or Undetermined

TAIL LENGTH: T 10 cm C 7 cm

RIGHT FRONT FLIPPER WIDTH:  cm SAMPLES COLLECTED:

PLASTRON LENGTH: 47.5 cm

WEIGHT:  #

DESCRIPTIVE REMARKS:

Revised 04/04/01

NMFS, HONOLULU LAB  
Marine Turtle Research  
2570 Dole Street  
Honolulu, HI 96822-2396

3

SEA TURTLE TAGGING FORM

DATE FORM FILLED OUT / /

CAPTURE DATE, LOCATION AND METHOD:

7/19/04 monday Palaaui ~~BULL PEN~~

PERSON RECORDING DATA: JB

TUMOR SCORE

0

ORAL TMRS EXT:  
YES OR NO

—

EMACIATION CODE

0

OLD TAGS:




44517E721E

LH



44397A2F4A

RH

STRAIGHT CARAPACE - LENGTH:

80.1 cm

WIDTH: 63.4 cm

NOTCH LENGTH:

79.4 cm

DB: 0 L.O.

VB: 0 L.O.

CURVED CARAPACE LENGTH:

87.5 cm

WIDTH: 82.0 cm

HEAD WIDTH:

— cm

AXIAL: 34.4 cm

LATERAL: — cm

PPS: YES OR NO OR NE

—

SEX: Male, Female  
or Undetermined

0

(Presumed female)

TAIL LENGTH: T

— cm

C — cm

RIGHT FRONT FLIPPER WIDTH:

— cm

SAMPLES COLLECTED:

PLASTRON LENGTH:

— cm

WEIGHT:

— #

DESCRIPTIVE REMARKS:

--

(4)

SEA TURTLE TAGGING FORM

DATE FORM FILLED OUT / /

CAPTURE DATE, LOCATION AND METHOD:

7/19/04 Monday Palaaun Bull PEN

PERSON RECORDING DATA: VB

TUMOR SCORE

0

ORAL TMRS EXT:

YES OR NO

—

EMACIATION CODE

0

OLD TAGS:

Empty boxes for old tags



44550D6255

RFL  
LFL



443A0C5821

LH

RH

STRAIGHT CARAPACE - LENGTH:

57.4 cm

WIDTH:

46.9 cm

NOTCH LENGTH:

56.9 cm

DB:

0 L.O.

VB:

0 L.O.

CURVED CARAPACE LENGTH:

61.5 cm

WIDTH:

56.0 cm

HEAD WIDTH:

— cm

AXIAL:

23.4 cm

LATERAL:

— cm

PPS: YES OR NO OR NE

—

SEX: Male, Female or Undetermined

U

TAIL LENGTH: T

— cm

C

— cm

SAMPLES COLLECTED:

RIGHT FRONT FLIPPER WIDTH:

— cm

PLASTRON LENGTH:

— cm

WEIGHT:

— #

DESCRIPTIVE REMARKS:

91-Rice glucose  
81-GB glucose

ORIGINAL Tagging

Revised 04/04/01

NMFS, HONOLULU LAB  
 Marine Turtle Research  
 2570 Dole Street  
 Honolulu, HI 96822-2396

11/02

SCL 60.5 TS-0

5

Recapture

## SEA TURTLE TAGGING FORM

DATE FORM FILLED OUT / /

CAPTURE DATE, LOCATION AND METHOD:

7/19/04 Monday Palau

BULLPEN

PERSON RECORDING DATA: JR

TUMOR SCORE

0

ORAL TMRS EXT:

YES OR NO

—

EMACIATION CODE

0

OLD TAGS:

4413200644 LH

4414326415 RH

NEW TAGS:

RFL

LFL

STRAIGHT CARAPACE - LENGTH:

65.0 cm

WIDTH: 50.7 cm

NOTCH LENGTH: 64.5 cm

DB: 0 L.O.

VB: 0 L.O.

CURVED CARAPACE LENGTH:

70.0 cm

WIDTH: 63.0 cm

HEAD WIDTH: — cm

AXIAL: 27.9 cm

LATERAL: — cm

PPS: YES OR NO OR NE

—

SEX: Male, Female  
or Undetermined

U

TAIL LENGTH: T — cm

C — cm

RIGHT FRONT FLIPPER WIDTH: — cm

PLASTRON LENGTH: — cm

WEIGHT: — #

SAMPLES COLLECTED:

DESCRIPTIVE REMARKS:

Revised 04/04/01

NMFS, HONOLULU LAB  
Marine Turtle Research  
2570 Dole Street  
Honolulu, HI 96822-2396

6

SEA TURTLE TAGGING FORM

DATE FORM FILLED OUT / /

CAPTURE DATE, LOCATION AND METHOD:

7/19/04 Monday Palaau BULLPEN

PERSON RECORDING DATA: JB

TUMOR SCORE

0

ORAL TMRS EXT:

YES OR NO

—

EMACIATION CODE

0

OLD TAGS:


NEW TAGS:

REF  
LEL

445209505F

44525A0331

LH

RH

STRAIGHT CARAPACE - LENGTH:

64.5 cm

WIDTH:

52.8 cm

NOTCH LENGTH:

64.4 cm

DB:

0 L.O.

VB:

0 L.O.

CURVED CARAPACE LENGTH:

69. cm

WIDTH:

64 cm

HEAD WIDTH:

— cm

AXIAL:

27.9 cm

LATERAL:

— cm

PPS: YES OR NO OR NE

—

SEX: Male, Female or Undetermined

U

TAIL LENGTH: T

— cm

C

— cm

RIGHT FRONT FLIPPER WIDTH:

— cm

SAMPLES COLLECTED:

PLASTRON LENGTH:

— cm

WEIGHT:

— #

DESCRIPTIVE REMARKS:


Handwritten notes on lined paper below the form, including "Left eye..." and "Right eye..."

Revised 04/04/01

NMFS, HONOLULU LAB  
 Marine Turtle Research  
 2570 Dole Street  
 Honolulu, HI 96822-2396

7

SEA TURTLE TAGGING FORM

DATE FORM FILLED OUT / /

CAPTURE DATE, LOCATION AND METHOD:

7/19/04 Monday Palaau BULLPEN  
 PERSON RECORDING DATA: JR

TUMOR SCORE  
 1  
 ORAL TMRS-EXT:  
 YES OR NO  
  
 EMACIATION CODE

OLD TAGS:


NEW TAGS:

RFL  
 LFL

443A145F17 LH  
 445260671A RH

STRAIGHT CARAPACE - LENGTH: 69.3 cm WIDTH: 53.6 cm

NOTCH LENGTH: 69.2 cm DB: 0 L.O. VB: 0 L.O.

CURVED CARAPACE LENGTH: 75.5 cm WIDTH: 64.5 cm

HEAD WIDTH: — cm AXIAL: 30.6 cm LATERAL: — cm

PPS: YES OR NO OR NE  SEX: Male, Female or Undetermined

TAIL LENGTH: T — cm C — cm

RIGHT FRONT FLIPPER WIDTH: — cm SAMPLES COLLECTED:

PLASTRON LENGTH: — cm

WEIGHT: — #

DESCRIPTIVE REMARKS:

Video 1 -  
 Right eye posterior - #1 Smooth.  
 Left eye posterior - irregular tissue



Revised 04/04/01

NMFS, HONOLULU LAB  
Marine Turtle Research  
2570 Dole Street  
Honolulu, HI 96822-2396

7/98 72.2 SCL TSI  
TSI

Recapture

SEA TURTLE TAGGING FORM

DATE FORM FILLED OUT / /

CAPTURE DATE, LOCATION AND METHOD:

7/19/04 Monday Palaau Buipen  
PERSON RECORDING DATA: JB

8

TUMOR SCORE

0

ORAL TMRS EXT:

YES OR NO

-

EMACIATION CODE

0

OLD TAGS:

LFL-4077575918  
LFL

NEW TAGS:

44521F5F13  
443A1A497B  
RH

LH

STRAIGHT CARAPACE - LENGTH:

75.5 cm

WIDTH:

54.4 cm

NOTCH LENGTH:

75.5 cm

DB:

0 L.O.

VB:

0 L.O.

CURVED CARAPACE LENGTH:

82 cm

WIDTH:

70.5 cm

HEAD WIDTH:

- cm

AXIAL:

32.2 cm

LATERAL:

- cm

PPS: YES OR NO OR NE

-

SEX: Male, Female or Undetermined

0

TAIL LENGTH: T

- cm

C

- cm

SAMPLES COLLECTED:

RIGHT FRONT FLIPPER WIDTH:

- cm

PLASTRON LENGTH:

- cm

WEIGHT:

- #

DESCRIPTIVE REMARKS:

Rice - 93 Glucose  
GB - 105 Glucose  
GB#2 - 106 Glucose

Revised 04/04/01

NMFS, HONOLULU LAB  
Marine Turtle Research  
2570 Dole Street  
Honolulu, HI 96822-2396

7/89 SCL45.6

TSP

(9)

Recapture

SEA TURTLE TAGGING FORM

DATE FORM FILLED OUT / /

CAPTURE DATE, LOCATION AND METHOD:

7/19/04	Monday	Palaau	Bullpen
PERSON RECORDING DATA: JR			

TUMOR SCORE

0

ORAL TMRS EXT:

YES OR NO

—

EMACIATION CODE

0

OLD TAGS:

LF	Y374 close to edge

NEW TAGS:

	LH
4452486024	
	RH
4454667607	

STRAIGHT CARAPACE - LENGTH:

69.3 cm

WIDTH:

54.6 cm

NOTCH LENGTH:

69.2 cm

DB:

0 L.O.

VB:

0 L.O.

CURVED CARAPACE LENGTH:

74.5 cm

WIDTH:

66.0 cm

HEAD WIDTH:

— cm

AXIAL:

25.7 cm

LATERAL:

— cm

PPS: YES OR NO OR NE

—

SEX: Male, Female or Undetermined

U

TAIL LENGTH: T

— cm

C

— cm

SAMPLES COLLECTED:

RIGHT FRONT FLIPPER WIDTH:

— cm

PLASTRON LENGTH:

— cm

WEIGHT:

— #

DESCRIPTIVE REMARKS:

PLASTRON  
PL Flat

10

Revised 04/04/01

NMFS, HONOLULU LAB  
Marine Turtle Research  
2570 Dole Street  
Honolulu, HI 96822-2396

SEA TURTLE TAGGING FORM

DATE FORM FILLED OUT / /

CAPTURE DATE, LOCATION AND METHOD:

7/19/04 monday Palaau BullPEN  
PERSON RECORDING DATA: VB

TUMOR SCORE

0

ORAL TMRS EXT:

YES OR NO

-

EMACIATION CODE

0

OLD TAGS:

Empty table for old tags

NEW TAGS:

RFL 443A27556D LH  
LFL 44521E227C RH

STRAIGHT CARAPACE - LENGTH: 78.3 cm

WIDTH: 59.5 cm

NOTCH LENGTH: 78.3 cm

DB: 0 L.O.

VB: 0 L.O.

CURVED CARAPACE LENGTH: 84.5 cm

WIDTH: 76.0 cm

HEAD WIDTH: - cm

AXIAL: 34.6 cm

LATERAL: - cm

PPS: YES OR NO OR NE -

SEX: Male, Female or Undetermined U

TAIL LENGTH: T - cm

C - cm

RIGHT FRONT FLIPPER WIDTH: - cm

SAMPLES COLLECTED:

PLASTRON LENGTH: - cm

WEIGHT: - #

DESCRIPTIVE REMARKS: RH-half missing and healed

GB-95 glucose  
MR-77 glucose

Revised 04/04/01

NMFS, HONOLULU LAB  
Marine Turtle Research  
2570 Dole Street  
Honolulu, HI 96822-2396

9/96 SCL 72.7cm  
ORIGINAL TS-2

Recapture

SEA TURTLE TAGGING FORM

DATE FORM FILLED OUT / /

11

CAPTURE DATE, LOCATION AND METHOD:

7/15/04 Monday Palaau  
PERSON RECORDING DATA: JB

TUMOR SCORE  
1  ~~1~~  
ORAL TMRS EXT.  
YES OR NO  
  
EMACIATION CODE

OLD TAGS:  
LFL-410408560A

NEW TAGS:  
44521E0746  
4454083717  
RH

STRAIGHT CARAPACE - LENGTH: 80.9 cm WIDTH: 63.2 cm  
NOTCH LENGTH: 80.8 cm DB: 1 L.O. VB: 0 L.O.  
CURVED CARAPACE LENGTH: 88. cm WIDTH: 77 cm  
HEAD WIDTH: — cm AXIAL: 32.4 cm LATERAL: — cm  
PPS: YES OR NO OR NE  SEX: Male, Female or Undetermined  Presumed female  
TAIL LENGTH: T — cm C — cm  
RIGHT FRONT FLIPPER WIDTH: — cm  
PLASTRON LENGTH: — cm  
WEIGHT: — #  
DESCRIPTIVE REMARKS: Chelonia  
Bamical removed for J. ZARDUS  
IN ALCOHOL

GB-132 Glucose one to regress tumor on  
MR-error;  
GB #2 134 Glucose #2 front vt flipper.  
GB #3 143

AND  
DAY 1

SEA TURTLE TAGGING FORM

(12)

DATE FORM FILLED OUT / /

CAPTURE DATE, LOCATION AND METHOD:

7/19/04 Monday Palau  
PERSON RECORDING DATA: JB

TUMOR SCORE

0

ORAL TMRS EXT:  
YES OR NO

—

EMACIATION CODE

0

OLD TAGS:

[Empty boxes for old tags]

NEW TAGS:

RFH  
LEL  
445209343F  
443A015B79

LH  
RH

STRAIGHT CARAPACE - LENGTH:

78.6 cm

WIDTH:

63.6 cm

NOTCH LENGTH:

78.3 cm

DB:

0 L.O.

VB:

0 L.O.

CURVED CARAPACE LENGTH:

84.5 cm

WIDTH:

80.0 cm

HEAD WIDTH:

— cm

AXIAL:

33.7 cm

LATERAL:

— cm

PPS: YES OR NO OR NE

—

SEX: Male, Female  
or Undetermined

U

TAIL LENGTH: T

— cm

C

— cm

RIGHT FRONT FLIPPER WIDTH:

— cm

SAMPLES COLLECTED:

PLASTRON LENGTH:

— cm

WEIGHT:

— #

DESCRIPTIVE REMARKS:

[Empty box for descriptive remarks]

GB-111 glucose  
MR-104 glucose, 99 glucose

Revised 04/04/01

NMFS, HONOLULU LAB  
Marine Turtle Research  
2570 Dole Street  
Honolulu, HI 96822-2396

①

*DAY 2  
SEGUNDO  
SPOT*

SEA TURTLE TAGGING FORM

DATE FORM FILLED OUT / /

CAPTURE DATE, LOCATION AND METHOD:

*Tue 7/20/04 Palau*  
PERSON RECORDING DATA: *KRISTOPHER GILES BULL PEN*

TUMOR SCORE

ORAL TMRS EXT:  
YES OR NO

EMACIATION CODE

OLD TAGS:

Empty box for old tags

4452030A1A



443A134E35



*LH  
RH*

STRAIGHT CARAPACE - LENGTH:

cm

WIDTH:  cm

NOTCH LENGTH:  cm

DB:  L.O.

VB:  L.O.

CURVED CARAPACE LENGTH:

cm

WIDTH:  cm

HEAD WIDTH:  cm

AXIAL:  cm

LATERAL:  cm

PPS: YES OR NO OR NE

SEX: Male, Female or Undetermined

TAIL LENGTH: T  cm

C  cm

RIGHT FRONT FLIPPER WIDTH:  cm

SAMPLES COLLECTED:

PLASTRON LENGTH:  cm

WEIGHT:  #

DESCRIPTIVE REMARKS:

*RFF #2 TUMOR HAS NORMAL SKIN SURFACE*

Revised 04/04/01

NMFS, HONOLULU LAB  
Marine Turtle Research  
2570 Dole Street  
Honolulu, HI 96822-2396

(2)

SEA TURTLE TAGGING FORM

DATE FORM FILLED OUT / /

TUESDAY

CAPTURE DATE, LOCATION AND METHOD:

7-20-04	PALAAU BULLPEN
PERSON RECORDING DATA:	

TUMOR SCORE  
  
 ORAL TMRS EXT:  
 YES OR NO  
  
 EMACIATION CODE

OLD TAGS:


443A293F59  
  
 44522B344F  


LH  
RH

STRAIGHT CARAPACE - LENGTH:  cm      WIDTH:  cm

NOTCH LENGTH:  cm      DB:  L.O.      VB:  L.O.

CURVED CARAPACE LENGTH:  cm      WIDTH:  cm

HEAD WIDTH:  cm      AXIAL:  cm      LATERAL:  cm

PPS: YES OR NO OR NE       SEX: Male, Female or Undetermined

TAIL LENGTH: T  cm      C  cm

RIGHT FRONT FLIPPER WIDTH:  cm      SAMPLES COLLECTED:

PLASTRON LENGTH:  cm

WEIGHT:  #

DESCRIPTIVE REMARKS:

Faint handwritten notes at the bottom of the page.

Revised 04/04/01

NMFS, HONOLULU LAB  
 Marine Turtle Research  
 2570 Dole Street  
 Honolulu, HI 96822-2396

(3)

## SEA TURTLE TAGGING FORM

DATE FORM FILLED OUT / /

CAPTURE DATE, LOCATION AND METHOD:

7-20-04 TUESDAY PALAAN BULLPEN

PERSON RECORDING DATA:

TUMOR SCORE

1

ORAL TMRS EXT:

YES OR NO

NO

EMACIATION CODE

0

OLD TAGS:


NEW TAGS:

4454752D4E



452A082029

LH  
RH

STRAIGHT CARAPACE - LENGTH:

58.4 cm

WIDTH: 44.2 cm

NOTCH LENGTH:

57.9 cm

DB: 0 L.O.

VB: 0 L.O.

CURVED CARAPACE LENGTH:

63 cm

WIDTH: 51 cm

HEAD WIDTH:

— cm

AXIAL: 23.9 cm

LATERAL: — cm

PPS: YES OR NO OR NE

—

SEX: Male, Female  
or Undetermined

D

TAIL LENGTH: T

— cm

C — cm

SAMPLES COLLECTED:

RIGHT FRONT FLIPPER WIDTH:

— cm

PLASTRON LENGTH:

— cm

WEIGHT:

— #

DESCRIPTIVE REMARKS:

QJH 1#2  
 PLAMP

LEFT EYE FROM FOUR # 1'S  
 NECK 1#2 (PORK)



4

Revised 04/04/01

NMFS, HONOLULU LAB  
Marine Turtle Research  
2570 Dole Street  
Honolulu, HI 96822-2396

SEA TURTLE TAGGING FORM

DATE FORM FILLED OUT / /

CAPTURE DATE, LOCATION AND METHOD:

7-20-04 TUESDAY FALAAN BULLPEN

PERSON RECORDING DATA:

TUMOR SCORE

0

ORAL TMRS EXT:

YES OR NO

-

EMACIATION CODE

⊕

OLD TAGS:

Four empty rectangular boxes for recording old tag information.

4523363A0C



45264A470E



LH  
RH

STRAIGHT CARAPACE - LENGTH:

54.7 cm

WIDTH:

42.9 cm

NOTCH LENGTH:

54.5 cm

DB:

0 L.O.

VB:

0 L.O.

CURVED CARAPACE LENGTH:

58.5 cm

WIDTH:

50.5 cm

HEAD WIDTH:

- cm

AXIAL:

22.4 cm

LATERAL:

- cm

PPS: YES OR NO OR NE

-

SEX: Male, Female or Undetermined

U

TAIL LENGTH: T

- cm

C

- cm

SAMPLES COLLECTED:

RIGHT FRONT FLIPPER WIDTH:

- cm

PLASTRON LENGTH:

- cm

WEIGHT:

- #

DESCRIPTIVE REMARKS:

Large empty rectangular box for descriptive remarks.

USIP, SEP, 1989, MAR 10/10/89

Revised 04/04/01

NMFS, HONOLULU LAB  
Marine Turtle Research  
2570 Dole Street  
Honolulu, HI 96822-2396

5

SEA TURTLE TAGGING FORM

DATE FORM FILLED OUT / /

CAPTURE DATE, LOCATION AND METHOD:

7-20-04 TUESDAY PALAAM BULLPEN  
PERSON RECORDING DATA:

TUMOR SCORE

0

ORAL TMRS EXT:  
YES OR NO

NO

EMACIATION CODE

0

OLD TAGS:

[Empty boxes for old tags]

NEW TAGS:

REF  
LFL  
452934701D  
4522251079

RH  
LH

STRAIGHT CARAPACE - LENGTH:

76.4 cm

WIDTH: — cm

NOTCH LENGTH:

76.4 cm

DB: 0 L.O.

VB: 0 L.O.

CURVED CARAPACE LENGTH:

82.5 cm

WIDTH: — cm

HEAD WIDTH:

— cm

AXIAL: 32.5 cm

LATERAL: — cm

PPS: YES OR NO OR NE

—

SEX: Male, Female  
or Undetermined

0

TAIL LENGTH: T

— cm

C — cm

RIGHT FRONT FLIPPER WIDTH:

— cm

SAMPLES COLLECTED:

PLASTRON LENGTH:

— cm

WEIGHT:

— #

DESCRIPTIVE REMARKS:

[Empty box for descriptive remarks]

Head indentation to marginals of  
RIGHT SIDE SHELL

Revised 04/04/01

NMFS, HONOLULU LAB  
Marine Turtle Research  
2570 Dole Street  
Honolulu, HI 96822-2396

6

SEA TURTLE TAGGING FORM

DATE FORM FILLED OUT / /

CAPTURE DATE, LOCATION AND METHOD:

7-20-04 TUESDAY PALAAN BULLPEN
PERSON RECORDING DATA:

TUMOR SCORE

0

ORAL TMRS EXT:  
YES OR NO

—

EMACIATION CODE

0

OLD TAGS:


NEW TAGS:

REF	4529657709	LH
REF		
	4523704244	PH

STRAIGHT CARAPACE - LENGTH:

73.7 cm

WIDTH:

— cm

NOTCH LENGTH:

73.7 cm

DB:

0 L.O.

VB:

0 L.O.

CURVED CARAPACE LENGTH:

79.5 cm

WIDTH:

— cm

HEAD WIDTH:

— cm

AXIAL:

34.1 cm

LATERAL:

— cm

PPS: YES OR NO OR NE

—

SEX: Male, Female  
or Undetermined

0

TAIL LENGTH: T

— cm

C

— cm

SAMPLES COLLECTED:

RIGHT FRONT FLIPPER WIDTH:

— cm

PLASTRON LENGTH:

— cm

WEIGHT:

— #

DESCRIPTIVE REMARKS:

NOV 20 10 00 AM '04  
MARINE TURTLE RESEARCH  
HONOLULU, HI

Revised 04/04/01

NMFS, HONOLULU LAB  
Marine Turtle Research  
2570 Dole Street  
Honolulu, HI 96822-2396

7

SEA TURTLE TAGGING FORM

DATE FORM FILLED OUT / /

CAPTURE DATE, LOCATION AND METHOD:

7-20-04 TUESDAY PALAAN BULL PEN

PERSON RECORDING DATA:

TUMOR SCORE <input type="checkbox"/> 0	OLD TAGS: <input type="checkbox"/> <input type="checkbox"/> <input type="checkbox"/>	NEW TAGS: RFI 452A624221 LFI  452470120C 
ORAL TMRS EXT: YES OR NO <input type="checkbox"/> —		
EMACIATION CODE <input type="checkbox"/> 0		

STRAIGHT CARAPACE - LENGTH:  cm      WIDTH:  cm

NOTCH LENGTH:  cm      DB:  0 L.O.      VB:  0 L.O.

CURVED CARAPACE LENGTH:  cm      WIDTH:  cm

HEAD WIDTH:  cm      AXIAL:  cm      LATERAL:  cm

PPS: YES OR NO OR NE  —      SEX: Male, Female or Undetermined  0

TAIL LENGTH: T  cm      C  cm

RIGHT FRONT FLIPPER WIDTH:  cm

PLASTRON LENGTH:  cm

WEIGHT:  #

DESCRIPTIVE REMARKS:

SAMPLES COLLECTED:

BLOOD G/wcose MR 94  
BLOOD G/wcose GB 82

Revised 04/04/01

NMFS, HONOLULU LAB  
Marine Turtle Research  
2570 Dole Street  
Honolulu, HI 96822-2396

8

SEA TURTLE TAGGING FORM

DATE FORM FILLED OUT / /

CAPTURE DATE, LOCATION AND METHOD:

7-20-04 TUESDAY PALAAN BILLPEN  
PERSON RECORDING DATA:

TUMOR SCORE

0

ORAL TMRS EXT:

YES OR NO

—

EMACIATION CODE

0

OLD TAGS:

[Empty boxes for old tags]

NEW TAGS:

RFI 452642167D  
. LFI 452B081D4F

LH  
RH

STRAIGHT CARAPACE - LENGTH:

43.6 cm

WIDTH: — cm

NOTCH LENGTH:

43.2 cm

DB: 0 L.O.

VB: 0 L.O.

CURVED CARAPACE LENGTH:

46.5 cm

WIDTH: — cm

HEAD WIDTH:

— cm

AXIAL: 16.7 cm

LATERAL: — cm

PPS: YES OR NO OR NE

—

SEX: Male, Female or Undetermined

U

TAIL LENGTH: T

— cm

C — cm

SAMPLES COLLECTED:

RIGHT FRONT FLIPPER WIDTH:

— cm

PLASTRON LENGTH:

— cm

WEIGHT:

— #

DESCRIPTIVE REMARKS:

[Empty box for descriptive remarks]

Revised 04/04/01

NMFS, HONOLULU LAB  
Marine Turtle Research  
2570 Dole Street  
Honolulu, HI 96822-2396

9

SEA TURTLE TAGGING FORM

DATE FORM FILLED OUT / /

CAPTURE DATE, LOCATION AND METHOD:

20 JULY 04 TUES <sup>rocky</sup> PALAAN BULL PEN

PERSON RECORDING DATA:

TUMOR SCORE

ORAL TMRS EXT:  
YES OR NO

EMACIATION CODE

OLD TAGS:

NEW TAGS:

RFL 45234D1354 LH

LFL 

45227A4B75 RH



STRAIGHT CARAPACE - LENGTH:

67.5 cm

WIDTH:

cm

NOTCH LENGTH:

67.0 cm

DB:

L.O.

VB:

L.O.

CURVED CARAPACE LENGTH:

73.5 cm

WIDTH:

cm

HEAD WIDTH:

cm

AXIAL:

29.8 cm

LATERAL:

cm

PPS: YES OR NO OR NE

SEX: Male, Female  
or Undetermined

TAIL LENGTH: T

cm

C

cm

RIGHT FRONT FLIPPER WIDTH:

cm

SAMPLES COLLECTED:

PLASTRON LENGTH:

cm

WEIGHT:

#

DESCRIPTIVE REMARKS:

BLOOD G. Glucose  
G. GB 79

Revised 04/04/01

NMFS, HONOLULU LAB  
Marine Turtle Research  
2570 Dole Street  
Honolulu, HI 96822-2396

16

SEA TURTLE TAGGING FORM

DATE FORM FILLED OUT / /

CAPTURE DATE, LOCATION AND METHOD:

20 JULY 04 TUESDAY PALAAN BULLPEN  
PERSON RECORDING DATA:

TUMOR SCORE\*

0

ORAL TMRS EXT:  
YES OR NO

—

EMACIATION CODE

0

OLD TAGS:

[Empty box for old tags]

NEW TAGS:

RFL: 452421643F  
LFL: [Barcode]  
452419431D  
[Barcode]  
[Empty box]

STRAIGHT CARAPACE - LENGTH:

72.3 cm

WIDTH: — cm

NOTCH LENGTH:

72.1 cm

DB: 0 L.O.

VB: 0 L.O.

CURVED CARAPACE LENGTH:

78 cm

WIDTH: — cm

HEAD WIDTH:

— cm

AXIAL: 28.3 cm

LATERAL: — cm

PPS: YES OR NO OR NE

—

SEX: Male, Female  
or Undetermined

U

TAIL LENGTH: T

— cm

C — cm

RIGHT FRONT FLIPPER WIDTH:

— cm

SAMPLES COLLECTED:

PLASTRON LENGTH:

— cm

WEIGHT:

— #

DESCRIPTIVE REMARKS:

[Empty box for descriptive remarks]

Revised 04/04/01

NMFS, HONOLULU LAB  
 Marine Turtle Research  
 2570 Dole Street  
 Honolulu, HI 96822-2396

11

SEA TURTLE TAGGING FORM

DATE FORM FILLED OUT / /

CAPTURE DATE, LOCATION AND METHOD:

20 JULY 04 TUESDAY PALAAM BULLPEN

PERSON RECORDING DATA:

TUMOR SCORE

0

ORAL TMRS EXT:  
 YES OR NO

—

EMACIATION CODE

0

OLD TAGS:

[Empty boxes for old tags]

NEW TAGS:

RFI  
 LFL  
 4526553043  
 [Barcode]  
 452A352D62  
 [Barcode]

LH  
 RH

STRAIGHT CARAPACE - LENGTH:

63.9 cm

WIDTH: — cm

NOTCH LENGTH:

63.8 cm

DB: 0 L.O.

VB: 0 L.O.

CURVED CARAPACE LENGTH:

69.5 cm

WIDTH: — cm

HEAD WIDTH: — cm

AXIAL: 27.0 cm

LATERAL: — cm

PPS: YES OR NO OR NE

—

SEX: Male, Female  
 or Undetermined

U

TAIL LENGTH: T

— cm

C — cm

RIGHT FRONT FLIPPER WIDTH:

— cm

SAMPLES COLLECTED:

PLASTRON LENGTH:

— cm

WEIGHT: — #

DESCRIPTIVE REMARKS:

[Empty box for descriptive remarks]



Revised 04/04/01

NMFS, HONOLULU LAB  
Marine Turtle Research  
2570 Dole Street  
Honolulu, HI 96822-2396

12

SEA TURTLE TAGGING FORM

DATE FORM FILLED OUT / /

CAPTURE DATE, LOCATION AND METHOD:

20 JULY 04 <sup>Tuesday</sup> / PALAAN BULLPEN

PERSON RECORDING DATA:

TUMOR SCORE

0

ORAL TMRS EXT:

YES OR NO  
-

EMACIATION CODE

0

OLD TAGS:

[ ]

[ ]

[ ]

[ ]

NEW TAGS:

452A4A4813

[ ]

4524452C7A

[ ]

LET  
RIT

STRAIGHT CARAPACE - LENGTH:

77.2 cm

WIDTH: [ ] cm

NOTCH LENGTH:

77.1 cm

DB: 0 L.O.

VB: 0 L.O.

CURVED CARAPACE LENGTH:

82.5 cm

WIDTH: [ ] cm

HEAD WIDTH:

[ ] cm

AXIAL: 31.4 cm

LATERAL: [ ] cm

PPS: YES OR NO OR NE

[ ]

SEX: Male, Female or Undetermined

0

TAIL LENGTH: T

[ ] cm

C [ ] cm

SAMPLES COLLECTED:

RIGHT FRONT FLIPPER WIDTH:

[ ] cm

PLASTRON LENGTH:

[ ] cm

WEIGHT:

[ ] #

DESCRIPTIVE REMARKS:

[ ]

BLOOD G /ucose MR 116  
BLOOD G /GB 96  
ucose

Revised 04/04/01

NMFS, HONOLULU LAB  
Marine Turtle Research  
2570 Dole Street  
Honolulu, HI 96822-2396

13

SEA TURTLE TAGGING FORM

DATE FORM FILLED OUT / /

CAPTURE DATE, LOCATION AND METHOD:

MOLOKAI

20 JULY 04 THE PALAAN BULLPEN  
PERSON RECORDING DATA:

TUMOR SCORE

1

ORAL TMRS EXT:  
YES OR NO

~~1~~

EMACIATION CODE

0

OLD TAGS:

[Empty boxes for old tags]

NEW TAGS:

RFL 442F783F5E  
LFL 442F567E2F

LH  
RH

STRAIGHT CARAPACE - LENGTH:

66.6 cm

WIDTH: — cm

NOTCH LENGTH: 66.4 cm

DB: 0 L.O.

VB: 0 L.O.

CURVED CARAPACE LENGTH:

71.5 cm

WIDTH: — cm

HEAD WIDTH: — cm

AXIAL: 25.5 cm

LATERAL: — cm

PPS: YES OR NO OR NE —

SEX: Male, Female or Undetermined U

TAIL LENGTH: T — cm

C — cm

SAMPLES COLLECTED:

RIGHT FRONT FLIPPER WIDTH: — cm

PLASTRON LENGTH: — cm

WEIGHT: — #

DESCRIPTIVE REMARKS:

Tumor #1 RFF (VIDEO) 11:42 TIME  
NORMAL SKIN

BLOOD Glucose MR 61  
BLOOD Glucose GB 59

Revised 04/04/01

NMFS, HONOLULU LAB  
Marine Turtle Research  
2570 Dole Street  
Honolulu, HI 96822-2396

24

SEA TURTLE TAGGING FORM

DATE FORM FILLED OUT / /

CAPTURE DATE, LOCATION AND METHOD:

20 JULY 04 THE PALAAN BULLPEN

PERSON RECORDING DATA:

TUMOR SCORE

0

ORAL TMRS EXT:  
YES OR NO

-

EMACIATION CODE

0

OLD TAGS:

[Empty boxes for old tags]

NEW TAGS:

RFL [Barcode]

442F594854 LH

LFL

[Barcode]

442F061113 RH

STRAIGHT CARAPACE - LENGTH:

70.0 cm

WIDTH: - cm

NOTCH LENGTH:

69.9 cm

DB: 0 L.O.

VB: 0 L.O.

CURVED CARAPACE LENGTH:

76 cm

WIDTH: 65 cm

HEAD WIDTH:

- cm

AXIAL: 26.1 cm

LATERAL: - cm

PPS: YES OR NO OR NE

-

SEX: Male, Female or Undetermined

U

TAIL LENGTH: T

- cm

C - cm

RIGHT FRONT FLIPPER WIDTH:

- cm

PLASTRON LENGTH:

- cm

WEIGHT:

- #

SAMPLES COLLECTED:

DESCRIPTIVE REMARKS:

[Empty box for descriptive remarks]

Revised 04/04/01

NMFS, HONOLULU LAB  
Marine Turtle Research  
2570 Dole Street  
Honolulu, HI 96822-2396

15

SEA TURTLE TAGGING FORM

DATE FORM FILLED OUT / /

CAPTURE DATE, LOCATION AND METHOD:

20 JUL 04 THE PALAAM BULLPEN

PERSON RECORDING DATA:

TUMOR SCORE

0

ORAL TMRS EXT:  
YES OR NO

—

EMACIATION CODE

0

OLD TAGS:

Empty boxes for old tags

NEW TAGS:

442C68263A  
4414491B64

STRAIGHT CARAPACE - LENGTH:

70.3 cm

WIDTH:

— cm

NOTCH LENGTH:

69.5 cm

DB:

0 L.O.

VB:

0 L.O.

CURVED CARAPACE LENGTH:

75.5 cm

WIDTH:

— cm

HEAD WIDTH:

— cm

AXIAL:

26.9 cm

LATERAL:

— cm

PPS: YES OR NO OR NE

—

SEX: Male, Female or Undetermined

U

TAIL LENGTH: T

— cm

C

— cm

SAMPLES COLLECTED:

RIGHT FRONT FLIPPER WIDTH:

— cm

PLASTRON LENGTH:

— cm

WEIGHT:

— #

DESCRIPTIVE REMARKS:

BLOOD G/ucose GB 94  
BLOOD G/ucose MR 100

Revised 04/04/01

NMFS, HONOLULU LAB  
Marine Turtle Research  
2570 Dole Street  
Honolulu, HI 96822-2396

16

SEA TURTLE TAGGING FORM

DATE FORM FILLED OUT / /

CAPTURE DATE, LOCATION AND METHOD:

20 JULY 04 TUE PALAAN BULL PEN

PERSON RECORDING DATA:

TUMOR SCORE

1

ORAL TMRS EXT:  
YES OR NO

0

EMACIATION CODE

—

OLD TAGS:

[Empty boxes for old tags]

NEW TAGS:

RFI  
LFL  
442D6D5F27  
4413127D56

LH  
RH

STRAIGHT CARAPACE - LENGTH:

78.3  
78.3 cm

WIDTH: 68.9 cm

NOTCH LENGTH:

78.0 cm

DB: 0 L.O.

VB: 0 L.O.

CURVED CARAPACE LENGTH:

84.5 cm

WIDTH: 75 cm

HEAD WIDTH:

— cm

AXIAL: 30.4 cm

LATERAL: — cm

PPS: YES OR NO OR NE

—

SEX: Male, Female  
or Undetermined

U

TAIL LENGTH: T

— cm

C — cm

SAMPLES COLLECTED:

RIGHT FRONT FLIPPER WIDTH:

— cm

PLASTRON LENGTH:

— cm

WEIGHT:

— #

DESCRIPTIVE REMARKS:

SKIN SAMPLE FOR DNA  
TO see if this turtle came from BOBISLE HAWAII

BLOOD glucose MR 101  
BLOOD glucose GB 112

Pointy shape to posterior of carapace. "indentations" anterior to marginals.

Revised 04/04/01

NMFS, HONOLULU LAB  
Marine Turtle Research  
2570 Dole Street  
Honolulu, HI 96822-2396

(A)

SEA TURTLE TAGGING FORM

DATE FORM FILLED OUT / /

CAPTURE DATE, LOCATION AND METHOD:

20 JULY 04 TUESO PALAMU BULLPEN  
PERSON RECORDING DATA:

TUMOR SCORE

2

ORAL TMRS EXT:

YES OR NO  
-

EMACIATION CODE

0

OLD TAGS:

[Empty boxes for old tags]

NEW TAGS:

RFL 44523C1271  
LFL [Barcode]  
442E387F22  
[Barcode]

LH  
RH

STRAIGHT CARAPACE - LENGTH:

57.2 cm

WIDTH: - cm

NOTCH LENGTH: 57.2 cm

DB: 0 L.O.

VB: 0 L.O.

CURVED CARAPACE LENGTH:

61 cm

WIDTH: - cm

HEAD WIDTH: - cm

AXIAL: 20.9 cm

LATERAL: - cm

PPS: YES OR NO OR NE -

SEX: Male, Female or Undetermined 0

TAIL LENGTH: T - cm

C - cm

RIGHT FRONT FLIPPER WIDTH: - cm

SAMPLES COLLECTED:

PLASTRON LENGTH: - cm

WEIGHT: - #

DESCRIPTIVE REMARKS:

(L) EYE 2#1's

(L) FF 1#3

(R) EYE 1#1's

HONEY COLOR TO SHELL

Revised 04/04/01

NMFS, HONOLULU LAB  
Marine Turtle Research  
2570 Dole Street  
Honolulu, HI 96822-2396

(18)

SEA TURTLE TAGGING FORM

DATE FORM FILLED OUT / /

CAPTURE DATE, LOCATION AND METHOD:

20 JULY 04 TUES, PALAAN BILLPEN  
PERSON RECORDING DATA:

TUMOR SCORE

0

ORAL TMRS EXT:

YES OR NO

→

EMACIATION CODE

0

OLD TAGS:

[Empty boxes for old tags]

NEW TAGS:

443A05481C  
445260782F

LH  
RH

STRAIGHT CARAPACE - LENGTH:

70.0 cm

WIDTH: — cm

NOTCH LENGTH:

69.5 cm

DB: 0 L.O.

VB: 0 L.O.

CURVED CARAPACE LENGTH:

74.5 cm

WIDTH: — cm

HEAD WIDTH:

— cm

AXIAL: 29.0 cm

LATERAL: — cm

PPS: YES OR NO OR NE

→

SEX: Male, Female or Undetermined

J

TAIL LENGTH: T

— cm

C — cm

RIGHT FRONT FLIPPER WIDTH:

— cm

PLASTRON LENGTH:

— cm

WEIGHT:

— #

DESCRIPTIVE REMARKS:

[Empty box for descriptive remarks]

SAMPLES COLLECTED:

[Empty box for samples collected]

[Empty box for samples collected]

[Empty box for samples collected]

Revised 04/04/01

NMFS, HONOLULU LAB  
Marine Turtle Research  
2570 Dole Street  
Honolulu, HI 96822-2396

19

SEA TURTLE TAGGING FORM

DATE FORM FILLED OUT / /

CAPTURE DATE, LOCATION AND METHOD:

20 JULY 04 TUE PALAAN BULL PEN  
PERSON RECORDING DATA:

TUMOR SCORE

1

ORAL TMRS EXT:  
YES OR NO

—

EMACIATION CODE

0

OLD TAGS:

Empty table for old tags

NEW TAGS:

RFI: 4452253C35  
LFL: [Barcode]  
44397D170E  
[Barcode]

LH  
RH

STRAIGHT CARAPACE - LENGTH:

76.5 cm

WIDTH: — cm

NOTCH LENGTH: 76.5 cm

DB: 0 L.O.

VB: 0 L.O.

CURVED CARAPACE LENGTH:

82 cm

WIDTH: U cm

HEAD WIDTH: — cm

AXIAL: 31.9 cm

LATERAL: — cm

PPS: YES OR NO OR NE —

SEX: Male, Female or Undetermined U

TAIL LENGTH: T — cm

C — cm

RIGHT FRONT FLIPPER WIDTH: — cm

SAMPLES COLLECTED:

PLASTRON LENGTH: — cm

WEIGHT: — #

DESCRIPTIVE REMARKS:

NECK 1#2  
LFF 1#2

Both Tumors  
SMOOTH  
NEARLY  
NORMAL  
SKIN



END  
Day 2  
N = 20  
N = 20

SEA TURTLE TAGGING FORM

DATE FORM FILLED OUT / /

CAPTURE DATE, LOCATION AND METHOD:

20 JULY 04 THE PALAAN BULL PEN  
PERSON RECORDING DATA:

TUMOR SCORE

0

ORAL TMRS EXT:  
YES OR NO

—

EMACIATION CODE

0

OLD TAGS:

[Empty boxes for old tags]

NEW TAGS:

44550A4E75



443A124F02



STRAIGHT CARAPACE - LENGTH:

70.1 cm

WIDTH:

— cm

NOTCH LENGTH:

69.5 cm

DB:

0 L.O.

VB:

0 L.O.

CURVED CARAPACE LENGTH:

75 cm

WIDTH:

— cm

HEAD WIDTH:

— cm

AXIAL:

28.6 cm

LATERAL:

— cm

PPS: YES OR NO OR NE

—

SEX: Male, Female  
or Undetermined

U

TAIL LENGTH: T

— cm

C

— cm

SAMPLES COLLECTED:

RIGHT FRONT FLIPPER WIDTH:

— cm

PLASTRON LENGTH:

— cm

WEIGHT:

— #

DESCRIPTIVE REMARKS:

① EYE BLIND (WHITE COATING)  
(VIDEO)  
TAKEN

~~BLOOD SAMPLE~~

SITE A Again  
Wednesday DAY 3

SITE B  
Moved to tree  
N 21° 5.558' ①  
W 157° 6.260'  
(4.04km from House)

Revised 04/04/01

NMFS, HONOLULU LAB  
Marine Turtle Research  
2570 Dole Street  
Honolulu, HI 96822-2396

SEA TURTLE TAGGING FORM

DATE FORM FILLED OUT / /

CAPTURE DATE, LOCATION AND METHOD:

7/21/04	Wednesday	BULLPEN
PERSON RECORDING DATA: PAWAU		

TUMOR SCORE

0

ORAL TMRS EXT:  
YES OR NO

—

EMACIATION CODE

0

OLD TAGS:


NEW TAGS:

REL	452356100B
LFL	
	4527574921

LH  
RH

STRAIGHT CARAPACE - LENGTH:

74.3 cm

WIDTH: — cm

NOTCH LENGTH:

73.3 cm

DB: 0 L.O.

VB: 0 L.O.

CURVED CARAPACE LENGTH:

80 cm

WIDTH: — cm

HEAD WIDTH:

— cm

AXIAL: 31.4 cm

LATERAL: — cm

PPS: YES OR NO OR NE

—

SEX: Male, Female  
or Undetermined

U

TAIL LENGTH: T

— cm

C — cm

RIGHT FRONT FLIPPER WIDTH:

— cm

SAMPLES COLLECTED:

PLASTRON LENGTH:

— cm

WEIGHT:

— #

DESCRIPTIVE REMARKS:

① DEE POSTERIOR SNIP. BUMP

BLOOD G. MR ERR  
BLOOD G GB 81

Revised 04/04/01

NMFS, HONOLULU LAB  
Marine Turtle Research  
2570 Dole Street  
Honolulu, HI 96822-2396

(2)

SEA TURTLE TAGGING FORM

DATE FORM FILLED OUT / /

CAPTURE DATE, LOCATION AND METHOD:

21 JULY 04 WED PALAAN BULLPEN  
PERSON RECORDING DATA:

TUMOR SCORE

0

ORAL TMRS EXT:  
YES OR NO

—

EMACIATION CODE

0

OLD TAGS:

[Empty boxes for old tags]

NEW TAGS:

452940784D  
4527554865  
[Barcode tags]

44  
PCH

STRAIGHT CARAPACE - LENGTH:

70.1 cm

WIDTH:

52.2 cm

NOTCH LENGTH:

69.8 cm

DB:

0 L.O.

VB:

0 L.O.

CURVED CARAPACE LENGTH:

76 cm

WIDTH:

68.5 cm

HEAD WIDTH:

— cm

AXIAL:

30.1 cm

LATERAL:

— cm

PPS: YES OR NO OR NE

~

SEX: Male, Female  
or Undetermined

U

TAIL LENGTH: T

— cm

C

— cm

SAMPLES COLLECTED:

RIGHT FRONT FLIPPER WIDTH:

— cm

PLASTRON LENGTH:

— cm

WEIGHT:

— #

DESCRIPTIVE REMARKS:

PCA on Carapace.

Revised 04/04/01

NMFS, HONOLULU LAB  
Marine Turtle Research  
2570 Dole Street  
Honolulu, HI 96822-2396

43.6

ORIGINAL TAGGED

Recapture

SEA TURTLE TAGGING FORM

DATE FORM FILLED OUT

JAN 21 1993

PALAAU NOT SEEN SINCE UNTIL NOW

CAPTURE DATE, LOCATION AND METHOD:

21 JULY 04 NED. PALAAU BULL PEN  
PERSON RECORDING DATA:

TUMOR SCORE

2

ORAL TMRS EXT:

YES OR NO  
-

EMACIATION CODE

0

OLD TAGS:

RFL - P726  
LH - R728

NEW TAGS:

RFL 452361331B  
LFL 4528484920

LH  
RH

STRAIGHT CARAPACE - LENGTH:

~~63.4~~ 63.4 cm

WIDTH:

59.9 cm

NOTCH LENGTH:

63.3 cm

DB:

0 L.O.

VB:

0 L.O.

CURVED CARAPACE LENGTH:

67.5 cm

WIDTH:

60.0 cm

HEAD WIDTH:

- cm

AXIAL:

23.1 cm

LATERAL:

- cm

PPS: YES OR NO OR NE

-

SEX: Male, Female or Undetermined

U

TAIL LENGTH: T

- cm

C

- cm

SAMPLES COLLECTED:

RIGHT FRONT FLIPPER WIDTH:

- cm

PLASTRON LENGTH:

- cm

WEIGHT:

- #

Honey yellowish color to carapace  
LFL MISSING TAG  
LH 1#4  
FLAT PL

DNA SKIN SAMPLE (VIDEO)  
to see if this turtle  
came from outside Hawaii.

Revised 04/04/01

NMFS, HONOLULU LAB  
Marine Turtle Research  
2570 Dole Street  
Honolulu, HI 96822-2396

SEA TURTLE TAGGING FORM

DATE FORM FILLED OUT / /

CAPTURE DATE, LOCATION AND METHOD:

21 JULY 04 NED. PALAAM BULLPEN  
PERSON RECORDING DATA:

TUMOR SCORE  
2  
ORAL TMRS EXT:  
YES OR NO  
—  
EMACIATION CODE  
0

OLD TAGS:  
[ ]  
[ ]  
[ ]  
[ ]

NEW TAGS:  
RFL  
LFL  
452915355E  
4527392911

LH  
RH

STRAIGHT CARAPACE - LENGTH: 54.3 cm WIDTH: 41.5 cm  
NOTCH LENGTH: 54.0 cm DB: 0 L.O. VB: 0 L.O.  
CURVED CARAPACE LENGTH: 58 cm WIDTH: 48.5 cm  
HEAD WIDTH: — cm AXIAL: 20.6 cm LATERAL: — cm  
PPS: YES OR NO OR NE — SEX: Male, Female or Undetermined 0  
TAIL LENGTH: T — cm C — cm

RIGHT FRONT FLIPPER WIDTH: — cm  
PLASTRON LENGTH: — cm  
WEIGHT: — #

DESCRIPTIVE REMARKS:  
(R) EYE I#3 MINOR VISION.  
(VIDEO) TMR BLOODY

BLOOD glucose MR 35  
BLOOD G CR 22

Revised 04/04/01

NMFS, HONOLULU LAB  
Marine Turtle Research  
2570 Dole Street  
Honolulu, HI 96822-2396

SEA TURTLE TAGGING FORM

DATE FORM FILLED OUT / /

CAPTURE DATE, LOCATION AND METHOD:

2 JULY 04 WED <sup>WED</sup> PALAAN BULLPEN

PERSON RECORDING DATA:

TUMOR SCORE

0

ORAL TMRS EXT:  
YES OR NO

—

EMACIATION CODE

0

OLD TAGS:


NEW TAGS:

~~RFL~~  
~~LEL~~

4526717336 LH

452667543F RH

STRAIGHT CARAPACE - LENGTH:

57.7 cm

WIDTH:

46.2 cm

NOTCH LENGTH:

57.6 cm

DB: 0 L.O.

VB: 0 L.O.

CURVED CARAPACE LENGTH:

61.5 cm

WIDTH:

54.5 cm

HEAD WIDTH:

— cm

AXIAL: 23.2 cm

LATERAL: — cm

PPS: YES OR NO OR NE

—

SEX: Male, Female  
or Undetermined

U

TAIL LENGTH: T

— cm

C — cm

RIGHT FRONT FLIPPER WIDTH:

— cm

SAMPLES COLLECTED:

PLASTRON LENGTH:

— cm

WEIGHT:

— #

DESCRIPTIVE REMARKS:

--

BLOOD G GB 82  
BLOOD G MR 91

Revised 04/04/01

NMFS, HONOLULU LAB  
Marine Turtle Research  
2570 Dole Street  
Honolulu, HI 96822-2396

SEA TURTLE TAGGING FORM

DATE FORM FILLED OUT / /

CAPTURE DATE, LOCATION AND METHOD:

2 JULY 04 NED, PALAAM BULLPEN  
PERSON RECORDING DATA:

TUMOR SCORE

1

ORAL TMRS EXT:  
YES OR NO

-

EMACIATION CODE

0

OLD TAGS:

[Empty boxes for old tags]

NEW TAGS:

RF  
4527212742  
4528596878  
PH

STRAIGHT CARAPACE - LENGTH: 48.9 cm WIDTH: 37.2 cm

NOTCH LENGTH: 48.6 cm DB: 0 L.O. VB: 0 L.O.

CURVED CARAPACE LENGTH: 52.5 cm WIDTH: 46 cm

HEAD WIDTH: - cm AXIAL: 18.7 cm LATERAL: - cm

PPS: YES OR NO OR NE - SEX: Male, Female or Undetermined 0

TAIL LENGTH: T - cm C - cm

RIGHT FRONT FLIPPER WIDTH: - cm

PLASTRON LENGTH: - cm

WEIGHT: - #

DESCRIPTIVE REMARKS: PL + (R) EYE 1#2 VIDEO

Faint handwritten notes at the bottom of the page.

Revised 04/04/01

NMFS, HONOLULU LAB  
Marine Turtle Research  
2570 Dole Street  
Honolulu, HI 96822-2396

(7)

SEA TURTLE TAGGING FORM

DATE FORM FILLED OUT / /

CAPTURE DATE, LOCATION AND METHOD:

2 JULY 04 WED <sup>nes day</sup> PALAAN BULLPEN  
PERSON RECORDING DATA:

TUMOR SCORE

0  1

ORAL TMRS EXT:

YES OR NO

YES  NO

EMACIATION CODE

0  1

OLD TAGS:

[Empty boxes for old tags]

NEW TAGS:

RFI  
LFL  
45272E2B36 LH  
[Barcode]  
4525557510 RH  
[Barcode]

STRAIGHT CARAPACE - LENGTH:

56.7 cm

WIDTH:

44.7 cm

NOTCH LENGTH:

56.6 cm

DB:

0 L.O.

VB:

0 L.O.

CURVED CARAPACE LENGTH:

60.5 cm

WIDTH:

53.5 cm

HEAD WIDTH:

[Blank] cm

AXIAL:

20.5 cm

LATERAL:

[Blank] cm

PPS: YES OR NO OR NE

YES

SEX: Male, Female or Undetermined

U

TAIL LENGTH: T

[Blank] cm

C

[Blank] cm

RIGHT FRONT FLIPPER WIDTH:

[Blank] cm

PLASTRON LENGTH:

[Blank] cm

WEIGHT:

[Blank] #

SAMPLES COLLECTED:

DESCRIPTIVE REMARKS:

① 1#2 ABOVE (L) EYE

BLOOD G. NR 77  
BLOOD G. GB 78



8

Revised 04/04/01

NMFS, HONOLULU LAB  
Marine Turtle Research  
2570 Dole Street  
Honolulu, HI 96822-2396

SEA TURTLE TAGGING FORM

DATE FORM FILLED OUT / /

CAPTURE DATE, LOCATION AND METHOD:

21 JULY 04 WEDNESDAY PALAAN BULLPEN

PERSON RECORDING DATA:

TUMOR SCORE

0

ORAL TMRS EXT:  
YES OR NO

-

EMACIATION CODE

0

OLD TAGS:

[Empty box for old tags]

NEW TAGS:

4524223C0D



45254A352D



LH  
RH

STRAIGHT CARAPACE - LENGTH:

57.5 cm

WIDTH: 43.6 cm

NOTCH LENGTH:

57.3 cm

DB: 0 L.O.

VB: 0 L.O.

CURVED CARAPACE LENGTH:

61.0 cm

WIDTH: 53.0 cm

HEAD WIDTH:

- cm

AXIAL: 22.9 cm

LATERAL: - cm

PPS: YES OR NO OR NE

-

SEX: Male, Female  
or Undetermined

U

TAIL LENGTH: T

- cm

C - cm

SAMPLES COLLECTED:

RIGHT FRONT FLIPPER WIDTH:

- cm

PLASTRON LENGTH:

- cm

WEIGHT:

- #

DESCRIPTIVE REMARKS:

[Empty box for descriptive remarks]

Revised 04/04/01

NMFS, HONOLULU LAB  
 Marine Turtle Research  
 2570 Dole Street  
 Honolulu, HI 96822-2396

(9)

Recapture

## SEA TURTLE TAGGING FORM

DATE FORM FILLED OUT / /

CAPTURE DATE, LOCATION AND METHOD:

2 JULY 04	WED	PALAAU	BULLPEN
PERSON RECORDING DATA:			

TUMOR SCORE

0

ORAL TMRS EXT:  
YES OR NO

1

EMACIATION CODE

0

OLD TAGS:

DH 4136077071

PH 413E4D0A00

NEW TAGS:

RFL

LFL

STRAIGHT CARAPACE - LENGTH:

67.6 cm

WIDTH: 52.3 cm

NOTCH LENGTH:

67.3 cm

DB: 0 L.O.

VB: 0 L.O.

CURVED CARAPACE LENGTH:

72.5 cm

WIDTH: 62 cm

HEAD WIDTH:

— cm

AXIAL: 26.1 cm

LATERAL: — cm

PPS: YES OR NO OR NE

—

SEX: Male, Female  
or Undetermined

U

TAIL LENGTH: T

— cm

C — cm

RIGHT FRONT FLIPPER WIDTH:

— cm

SAMPLES COLLECTED:

PLASTRON LENGTH:

— cm

WEIGHT:

— #

DESCRIPTIVE REMARKS:

2 - 10

x 9

÷ original #

Revised 04/04/01

NMFS, HONOLULU LAB  
Marine Turtle Research  
2570 Dole Street  
Honolulu, HI 96822-2396

(10)

SEA TURTLE TAGGING FORM

DATE FORM FILLED OUT / /

CAPTURE DATE, LOCATION AND METHOD:

7/21/04	Bull Pen Palaau
PERSON RECORDING DATA:	

TUMOR SCORE

ORAL TMRS EXT:  
YES OR NO

EMACIATION CODE

OLD TAGS:


NEW TAGS:

RFL  RHL

KFL

LHL

STRAIGHT CARAPACE - LENGTH:  cm      WIDTH:  cm

NOTCH LENGTH:  cm      DB:  L.O.      VB:  L.O.

CURVED CARAPACE LENGTH:  cm      WIDTH:  cm

HEAD WIDTH:  cm      AXIAL:  cm      LATERAL:  cm

PPS: YES OR NO OR NE       SEX: Male, Female or Undetermined

TAIL LENGTH: T  cm      C  cm

RIGHT FRONT FLIPPER WIDTH:  cm      SAMPLES COLLECTED:

PLASTRON LENGTH:  cm

WEIGHT:  #

DESCRIPTIVE REMARKS:

Blood GB 59  
MR 63

Revised 04/04/01

NMFS, HONOLULU LAB  
 Marine Turtle Research  
 2570 Dole Street  
 Honolulu, HI 96822-2396

(11)

## SEA TURTLE TAGGING FORM

DATE FORM FILLED OUT / /

CAPTURE DATE, LOCATION AND METHOD:

7/21/04 Wed.	Palaau, Molokai
Boat dive	

PERSON RECORDING DATA:

TUMOR SCORE

0

ORAL TMRS EXT:

YES OR NO

-

EMACIATION CODE

0

OLD TAGS:


NEW TAGS:

RFL

4529607525

LFL



452420473F



LHL

RHL

STRAIGHT CARAPACE - LENGTH:

51.6 cm

WIDTH: 40.9 cm

NOTCH LENGTH:

51.4 cm

DB:

0 L.O.

VB:

0 L.O.

CURVED CARAPACE LENGTH:

55.5 cm

WIDTH: 48.5 cm

HEAD WIDTH:

-

AXIAL:

20.6 cm

LATERAL:

-

PPS: YES OR NO OR NE

-

SEX: Male, Female  
or Undetermined

U

TAIL LENGTH: T

-

C

-

SAMPLES COLLECTED:

RIGHT FRONT FLIPPER WIDTH:

-

PLASTRON LENGTH:

-

WEIGHT:

-

DESCRIPTIVE REMARKS:

--

Blood GB 102  
 Sugar MB 105

Revised 04/04/01

NMFS, HONOLULU LAB  
Marine Turtle Research  
2570 Dole Street  
Honolulu, HI 96822-2396

SEA TURTLE TAGGING FORM

67

DAY 3  
END  
7/21/04  
Wednesday  
(12)

DATE FORM FILLED OUT / /

CAPTURE DATE, LOCATION AND METHOD:

7/21/04 Wed	Palaau, Molokai
PERSON RECORDING DATA: Boat dive	

TUMOR SCORE

0

ORAL TMRS EXT:  
YES OR NO

—

EMACIATION CODE

0

OLD TAGS:


NEW TAGS:

4526623C1B	RHC
4528360F51	LHL

STRAIGHT CARAPACE - LENGTH: 62.7 cm WIDTH: 48.5 cm

NOTCH LENGTH: 62.9 cm DB: 0 L.O. VB: 0 L.O.

CURVED CARAPACE LENGTH: 68.0 cm WIDTH: 58.5 cm

HEAD WIDTH: — cm AXIAL: 28.5 cm LATERAL: — cm

PPS: YES OR NO OR NE — SEX: Male, Female or Undetermined U

TAIL LENGTH: T — cm C — cm

RIGHT FRONT FLIPPER WIDTH: — cm SAMPLES COLLECTED:

PLASTRON LENGTH: — cm

WEIGHT: — #

DESCRIPTIVE REMARKS: