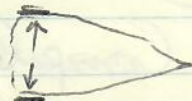


LEATHERBACK STRANDING  
WAIMANALO

3/24/82 WEDNESDAY

103.5 cm length Plastron  
75.5 cm width (straight)  
137 cm carapace length



4.49' (54")

PHOTOS

2:45 pm Bridge just before  
Waimanalo Beach Park  
(next beach past Shriener Beach?) or hollows?

All 4 flippers chewed off - looks fresh.

Paul Chinen - 247-0807

Duane Alvarez - 247-3194

Robert Shockley

→ Brian Richard - 624-3632 [sat]

photo & weight  
← 45-402 KOA  
KAHIKO  
KANEOTE  
96744

I was told it was very lively -  
tried to "crawl" back into the  
water.

Transported on pallet in van to  
Kewalo Basin lab at ~ 5:30 pm

Chiswick had killed it by 2  
bang-stick shotguns in the head.

FIRST SEEN ~ 20' from shore



Turn on back, cut plaster cut off -  
easy to cut - mostly cartilage

3-24-82

WED. Complete GI removed - large  
caecum(?) seen.

Remains of each front limb saved +  
remains of femurs.

Complete head.

Square section from plaster.

4 "plugs" from carapace.

Ovaries present - very small  
eggs present. looks immature

Quantity  
weighed transfer  
material in



25 MARCH 82

GI TRACT OF  
LEATHERBACK

11

Murray Daily, Rod,  
Peaney and me

Esoph. to <sup>1st(?)</sup> Stomach 145 cm  
appears to b  
→ value

Stomach? blind sack loop  
may have valve

Quarter  
rigid translucent  
material in  
gut

1st value (crop) 35-40 cm

valve leads to fluid filled  
crop(?)

150 cm from above crop <sup>analob</sup> to change  
to smaller inst. seems to be  
another valve

~~found~~ cutting backwards toward  
~~plastic~~ front from last tie.

found; <sup>name not given</sup> plastic worm (?)  
no abnormalities discussed

<sup>zone 1</sup> Next tie off point forward from back  
inside very ridged muscular  
highly ridged (increase surface area)  
another worm (?) found

~~found~~ <sup>3rd</sup>  
<sup>and</sup> larger portion of yellowish green  
material, somewhat like gut size



leather back cont.

found dark flecks found in contents  
of first section cut. Murray took  
examples off to look at.

Contents up to this point  
put down drain

Second cutting began at rear  
portion of crop(?)

Bag found in beginning determined  
to be part of the system  
sack has diff looking mucosal  
lining

pipuli starts just after  
sack

found in lower esoph looks  
like food matter

A section of esoph was cut  
to be saved

did not have a sphincter, supposed  
large pipuli serve purpose  
for freezing and photo

small  
contents

about  
1/3 way  
down

structure  
to make

Section  
↓  
very  
heavy  
and large



(small intestine) measurement of Area #4  
from ~~the~~ <sup>start of</sup> to Cecum 625 cm

mucosa greenish all way along  
inner surface

Surface <sup>is</sup> ~~has~~ pitted ~~surface~~ which,  
when pushed on secretes a mucoselike  
thick ~~liquid~~, numerous holes  
yellowish (mucus?)

about  
1/3 way  
down

changes to a more snake skin  
appearance, no more secretions,  
strange

~~secretion~~  
secretion  
to snake

Begin second cutting of little intestine  
no food or parasite found, but very  
heavy mucosal material yellowish  
and thick. Does not have secretions  
looks like snake skin up above  
little intestine thrown out after  
inspection

Section #5 the ~~of~~ Cecum  
pouch <sup>blind</sup> duodenum

spleen is attached  
still frozen, ~~but~~ not good for worms  
spinal value

Bag is full of (butter <sup>mucus</sup> scotch topping)



material of mostly digested

cellophane

found another piece of plastic

Section #6 <sup>105 cm</sup> Some material from large intestine saved also found large numbers of small gelatinous bodies

3-25-82 Thursday

sect #7 rectum 25 cm

3-25-82

bag from sect 7 put in towel pack

Also liquid from sect 6 mixed with water and decanted samples taken

29 March 82

July

found a few examples of what maybe fecal material in to packet #1 plus cellophane also found some rocks

Tom Hida - Pyrosoma

Real pack serving party

F&G Survey of MAXUKA et al.

Haun 94636.5 H3425

from Galway

Ni. Ill. Univ.

CECIL H. BROWN March 1981 J Poly. Soc. Growth & development of folk zoological life-forms in Polynesian lagoons

shells in his from T...



G.H. BALAZS

SCANNED

DAILY LOG

FEB 82 - DEC 1982

G.H. BALAZS