

JATA II

JATA III

NOV. - DEC. 87  
(CONTINUED BOOK 3)

AUG. 87  
PRELIMINARY

Book 2  
JATA - BALAZS

JATA

BALAZS  
1985 & 1987



29 AUG - 1 SEPT 85 JOHNSTON ATOLL P. 57

10-14 AUGUST 87 JA P. 87

23 NOV. - DEC 87 JATA III - P. 103  
MON

TIDE CHART - P. 119

G. H. BALAZS

Bree VAUGHN - MARS NAV-8

471-0029  
422-5566

Lennon Home - 395-2422

Barry CHOY - 235-1391

HARRY EMMETT FINCH = (213) 457-7895

W6PWF

32101 PACIFIC COAST HWY  
MALIBU, CA

90265



### COMPOSITION BOOK

9 3/4 IN. x 7 1/2 IN. (24.8 cm x 19 cm)

AVAILABLE AS:

- No. 09-9130 (1130) 60 SHEETS COLLEGE RULED & MARGIN
- No. 09-9132 (1130-P) 60 SHEETS COLLEGE RULED & MARGIN
- No. 09-9134 (1143-X) 100 SHEETS COLLEGE RULED & MARGIN
- No. 09-9132 (1130-P) NUMBERED PAGES

Made in U.S.A.

VERNON McMILLAN, Inc., ELIZABETH, N.J. 07208

LIBRARY OF  
GEORGE H. BALAZS



DATA Book No. 2  
- JATA PROJECT -

1

Johnston - 422-0531 " Johnston IS  
operator at JA  
Bill <sup>Gilgert's</sup> home 261-2232  
Bill Cooke - office - 3182  
Residence - 2715

JA MAILING ADDRESS -  
APO San Francisco  
96305

Angela's mother - 732-7163

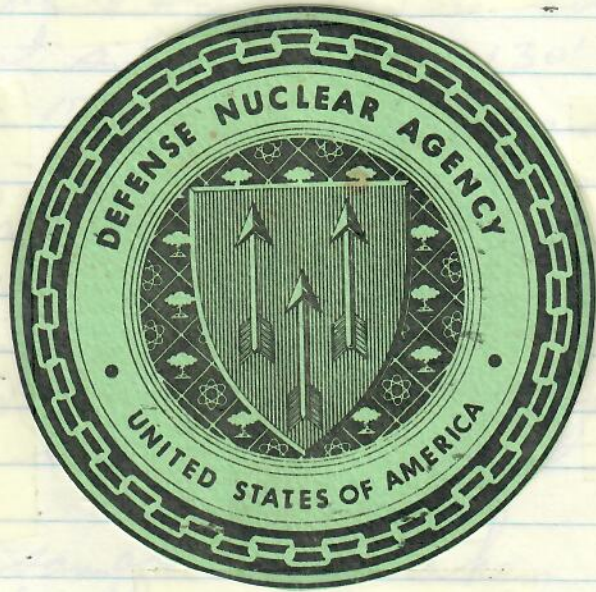
AUTOVON AUTOMATIC FROM Honolulu  
Bill Rumsey 622-4258  
Bill Rumsey (USCG) 2305  
Doug Forcell - r.f. ext. 3182  
Quarters 293c

My room 214A Bldg 16 8/10-8/14/87 Tel 2975  
J Ham Shack Tel 2805



12 NOV 83

SATURDAY



*[Faint, illegible handwritten notes in pencil, covering the majority of the page below the seal.]*



12 NOV 83

SATURDAY

UP 6am; Bill, John & Gail set  
4 nets<sup>"BW"</sup> starting at 7:15am -

Strong squall present, 25-30kts.

1-60' at site #2; 1-130' site #3;

1-130' at site #12; 1-130' at site #7,

AT ~ 10:15am Alan and I  
set 1-90' almost continuing on the ~~line~~  
west from site #2.

(75 MINUTES - 26')

DIVE Starting at 10:30am - from zodiac -

19

DIVE  
SITE 5

Swam to subsurface, faintly seen  
green head inside east end of  
WP.

Water sample "D" taken here at  
15' depth inshore side of head -  
All Caulerpa growth; only small  
patches of live encrusting coral. Lots  
of silt in water. Top of head is  
probably 5' under. Surrounding silt  
patches. Drifts of detached Caulerpa

Swimming straight out-oceanward - we  
took water sample "B" almost  
even with the edge of WP wall -  
18' depth - inshore side (north) -  
Still all Caulerpa - surrounding silt patches.  
Caulerpa drifts

Swam to #1 coral head, seemingly most  
favored, off WP. Water sample "A"  
17' seaward side.



6

INTRODUCE DIFFERENT ALGAE TO JA?  
DIVE IMMEDIATELY ALONG W/ SEAWALL

12 NOV 83

Saturday Saw Laurencia growing on the inside slope of head - (very sparse on outside slope). Top of head down to about 5' has only Bryopsis. But not total coverage. There are places with bare limestone. Lower <sup>(25')</sup> depth of head has live encrusting coral in many places.

DIVE

19

SITE 5

We then swam under and along Site #2 nets (1-60'; 1-90'). There is lots of depth under them for a turtle to swim. No algae seen growing between heads nos. 1 & 2 - just corals and limestone and silt areas. - 20' (+) where nets are set, except where slope of no 2 head comes up - <sup>60'</sup> net had been set over this and was partly caught on the bottom.

Water sample "C" taken at 20' sea ward side of head no. 2. Silt area at the <sup>silt</sup> base of this head is 26'. Lots of Bryopsis on the top to a depth of - 5'. Only 1 patch of Laurencia seen (seaward, just below Bryopsis). The rest of slope all around is encrusting coral and limestone. Small patches of Pocillopora.



12 NOV.  
SAT. no algae.

DIVE 19  
SITE S

Swam back to Head no. 1 where I took 15 photos of Caulerpa & Bryopsis.  
UW - B roll. Then picked what I believed to be grazed areas of Bryopsis for nutrient analysis. Returned to dining hall for lunch.

A 3:15 pm build I motored to Sand Island. Beaching cove is a sand beach ~ 100 yards long. Bar BG and electrical outlet there. East part of island is a high dome. 2 groups of frigates noted - male displaying pouches. Vegetation is a thick "iceplant."

Higher areas seem to be bunch grass. Lots of shearwater borrows, consequently much also be suitable for turtles to dig nests. Lots of beer bottles, iron debris and other junk especially along south shore. Old cement slab noted too.

See  
Map  
p. 43

Questions - Where does Sand Is. sewage go?

How many lights are there at night?

Council indicated that water is regularly sampled for coliforms right off the golf course. Coliforms are found.

Source?

Attended <sup>at 10:45</sup> Commission Service



Nestly EAST 1992

12 NOV 83 Turtle caught ~ 4pm WP  
SAT set #2

PAINTED NO. 21

Released by piling at ~ 5:35 pm.

photos on coral rubble beach - Roll 3  
(Tag shows on R HAND)

87.0 x 67.4

7560 LFL

S - ~~87.0~~ x ~~67.4~~

C - 92.6 x 85.3

7561 L3-4th

PL - 70.6

7562 RFL

HEAD - 12.0

TAIL - 21.2

7563 R3-4th

WEIGHT - 239 lbs (108.6 kg)

RFF - 13.2

7564 R HAND

LFF - 13.2

6-6

EYES - 4/4

10 may L - bone wedge

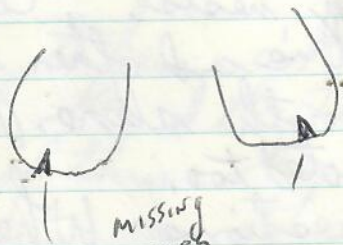
Blood for sep &amp; chot.

fat biopsy

Bone?

Red algae on skin

green on PL

MISSING  
pieces

7560 Picked out mouth particle



1. Hoop net
2. Varathane
3. Setting locations - water, <sup>Decom water/vehicles</sup> permission needed to <sup>disperse</sup> water quality report / Blk discharge
4. Checking of above from land
5. Number of sets
6. Weighing/measurements
7. Release site Blood in water from sampling
8. Continuous setting - time of start
9. Rough water - high winds
10. Dive without other divers in boat
11. Chol. test encouraged
12. Data write-up/evening

### Reasons for not setting east end

1. Eventually will grow likely, i.e. dive needed
2. Drowned when checking
3. Red hat draining pipes
4. Sewer discharges

Note - Turtles see floats when head comes out of water; They can't do this at night.

13 N  
SUND

Dive  
#20  
R



13 NOV 83  
SUNDAY John and Bill set nets ~ 10am

as follows:

Site #1 - 130'

Site #13 (new) - 60' - just west of site #1

Site #2 - 90'

Site #14 (new) 130' - just west of site #2

Site #7 - 130' - anchor dragged - BAG IN west end.

Bill Alan and I took zodiac to  
MEM area and later 2 made Dive  
#20 - 85 minutes - 20' MAX.

Dive  
#20  
R

Start ~ 11:50am; finished ~ 1:05pm.  
Inshore at 10' depth the heads and  
hard substrate has all Caulerpa growth also  
Saw thick patches of serpulata - serpulones  
on both sides growth in silt bottom area.  
Very sparse fish life generally noted.  
Visibility on this dive estimated  
10-12' most. We swam along  
to the East Coral head of MEM (site #1).  
Bottom of this head at silt area is  
14'. Bryopsis on top extends down  
slope only to ~ 3' depth. Saw a few  
patches of Caulerpa on top. Caulerpa  
all on the slopes of this head.  
"E" water sample taken at inside  
base. Noted some bare area  
of limestone on top of head between  
the Bryopsis growth.



DIVE #20 (CONTINUED)  
13 NOV 83  
SUNDAY

outer oceanside slope of this head seems to have less Caulerpa than inner slope. There are bare areas and encrusting corals present on the outer slope.

We then swam ~50' seaward of head. Noted that Caulerpa becomes less, but there are large drifts in the silt areas. Some table-top Acropora present.

Approx. 100' - 150' seaward of head Caulerpa is sparse. Large drifts of Caulerpa and Bryopsis are in silt areas. What is the source of this Bryopsis? At the

bottom depth of 20' I collected water sample "G". Lots of encrusting corals seen in the area. In this area, I collected a bag of detached Bryopsis from the drift. Noted long fine growths, unlike that collected from the tops of heads.

Question - How long can Bryopsis remain intact - green - when detached?

No Caulerpa or Bryopsis seen growing in this area. Saw a 10' depth head bare limestone. Swimming back in saw a 15' head with sparse Bryopsis

13 NOV  
SUN

756

7566

7567

7568

7569

75



13 NOV, 83

SUN

John & Bill picked up nets starting at 5:30pm -  
 Returned ~ 7:15. Turtle found in  
 net at Site #2. Hoop net taken  
 on BW. PAINTED - NO. 22

7565 RFL

S - 92.5 x 72.1  
(Same for notch)

7566 R3-4th

C - 96.7 x 96.0

7567 LFL

PL - 79.3

HEAD - 12.6

7568 L3-4th

TAIL - 26.4

WEIGHT - 312 lbs. (141.8 kg)

7569 R HAND

RFF - 14.3

LFF - 14.0

6-6

EYES - 4/4

Fat Biopsy

Bone wedge

Tried, but could not draw blood.

7565 Obtained scraping of skin &amp; PL (red, red &amp; green)

7565 Mouth sample

Orange PL

Lots of photos taken.

Notch healed area between 4-5th scale left FF<sub>2</sub>.  
almost looks like old tag loss.

7565 Stomach pumping - Ran water into stomach w/ pressure on flask



14 NOV 83

MONDAY

Leaving dock at 7am, Bill & I  
 set nets at the following locations -

- 1 - 130' <sup>site #1</sup> MRM - even between the 2 heads
- 1 - 130' Site #2
- 1 - 60' Site #11
- 1 - 90' Site #7
- 1 - 130' Site #15 (new) just east  
 of WP seawall, parallel  
 to the end.

Radiation hazard signs on fence in  
 east portion of Redhat - Steer. 90  
 source in X-ray machine, according  
 to Maj. Arken. To be removed!

NOV  
SUNDAY

DIVE

21

SITE

T



NOV 13 Backnotes: <sup>3:10 PM</sup> Noted in zodiac to Sand Is.  
 SUNDAY while John, Alan and Gail when in  
 DIVE BW on scuba diving to North Is., east side,  
 21 north end. Bill checked nets at 3:30 PM  
 SITE 3 seen in areas.

T

From sand core, I walked counter-clockwise around east end of Sand Is. Photos taken of beaches designated #1, #2 (both facing east), #3 (facing ~~west~~ north), and #4 - mooring cove (faces southwest). See Map p. 43 book 1 for locations.

Sand sampled elevated vegetated slopes of beach #1.

Cement "box" seen at beach #2.

The island really is a high dome - all natural presumably.

Lots of debris that could be picked up and removed. Copper ground wires, many at surface, from existing antenna. Reportedly 2 gun stands were <sup>here</sup> (offshore?)

Visited "mothballed" other end of island but only to end of causeway. Noted lots of black molluscs intertidal along causeway.

Man at green building reports normal workday of 10-12 men. Trash regularly removed by Mike boat & dumpster.



14 NOV 83

MONDAY

45 MINUTES - 52'

14A

DIVE  
21/22

U

DIVE 21 - John, Alan & I  
in BW. Motored out channel - used  
"look-box", but hard to see  
the bottom. Off Air Terminal -  
but still inside entrance buoy light.  
Bottom 55-60'. We anchored as  
a head 10' from surface. Compared  
with Dive 7 (10-5), the heads here  
are much larger, but few - farther  
apart. Visibility est. 40-50'.  
Saw a plastic or PVC line 1.5-2"  
diameter, presumably running offshore.  
Saw numerous 55 gal drums,  
some of which appeared to still  
be sealed. Fish life  
sparse, but still more present  
then Acropora area across from  
harbor.

5' to  
Row of  
Pillings =



14 NOV 83 Departed at 3:30pm with Alan  
in Zodiac - tide subsiding -  
Started at channel edge, East Point,  
and count/snapped to the extent  
possible, all coral heads with  
Bryopsis growing on them.

Some general observations are:

1. If the head is high enough for waves to break on it, Bryopsis is present;
2. The 2 most emergent heads are right off WP; turtles don't feed on top because <sup>an</sup> insufficient amount of water depth is present;
3. Some heads inshore have both Coulesera and Bryopsis growing on top
4. Bryopsis covered heads, i.e. heads that break, only appear a short distance from shore.

— EP <sup>peninsula</sup> to row of Piling — <sup>CARGE</sup> Bryopsis head just to the east of EP

First Bryopsis coral heads are actually to the west  $\nabla$  of EP - they show up on the aerial photo.

A total of 29 <sup>heads</sup> were counted. In addition, there is a coral ridge, broken in places, that extends more inshore between EP and the piling. Bryopsis is on top of this ridge. Inside the ridge

EP to  
Row of  
Piling =



14 NOV 83

MONDAY

Row of  
PILINGS  
TO W. edge  
of WP =

31

Pilings to end of building that sets along road and air strip. 13 heads counted along here, as well as some inshore ridge broken (separated from each other) in places. Caulerpa is present on top along with the Bryopsis on this ridge. MRM's 2 coral heads (Net Site #1) are also off the building. (+5 MORE OFFSHORE 11/16) = 18

MRM. to west edge of WP. Counted 7 + 4 prominent (ie 2 highly emergent, 2 where sites #2 and #3 have been made) Totals 11 (+2 MORE 11/16) = 13

WP -  
Southwest  
CORNER =  
18

West edge of WP to (and including) Double Coral Head (Site #7) that shows prominent on map. Counted 12 Total

Double Coral Head to Southwest end of island - Counted 6

- 79 Total + Ridge -



14 NOV 83

There is an underwater rock ridge extending out from Southwest end - Currents strong through here, sometimes pulling southwest, sometimes north. We saw shark line and dumped garbage go both ways, depending on stage of tide. Across the channel there is Acropora without algae. Waves break hard in places.

"Sewer" receives far more than just human waste sewage. - Note Deion's washing of vehicles - wash runs into drain grate and presumably directly into ocean. Caretaker of rabbits stated that carcasses are being preserved in formalin for disposal in WTEADS plant when completed.



15 NOV 83 6-7am Hard rain squalls.  
 TUESDAY Bill & John set nets from BW as follows:

Site #2 130'  
 Site #3 130'  
 Site #7 90'  
 Parallel to WP face (New) #16 130'  
 Right (west) side of WP (new) #7 60'

no captures all day; picked up ~ 6:15pm

Also MENTIONED DETONATION OF LIVE BOMB NO  
 ↓ FOUND NEAR TURNING BASIN

Spoke with H&N Security officer Moses Caballero.

On Saturday 11/12 he saw painted no. 10 from his (Shobie) cat, off house point near reef where iron stake is located. Turtle dove vigorously when approached. This 333lb turtle was caught and released on 11/6 at boat ramp. Years ago he saw a large turtle with many barnacles at this location. (when in school)

In the 1950's he used to catch turtles at the Big Is. and sell them commercially. Largest was 400 lbs. Never found one with

u  
So  
cc  
Big Is.  
NOTE



15 NOV

TUES.

a tag. Used to take meat from the wings, save the shell, and throw the rest away. Places he caught them included Cape Kumukahi; and Opihika o near Ditchdale Park in Puna. There is a large underwater cavern here ~~the~~ where a "herd" of turtles swims out. Catch methods included ice hooks with rope attached to rubber raft, when the turtle tires itself out they go get it. Also shoot them with a .30-30 from the cliffs!

About 12 noon Alan & I motored zodiac slowly to mark where TC10 was seen, then over coral heads to the inside edge of barrier reef to the west of North Island (see p430 Book I). Snorkeled for 30 minutes - Strong currents from waves coming over reef. Very clear. *Acropora* + *Millipora* <sup>red</sup> ~~corals~~ found in shaded areas. Lots of spiny sea urchins and sea cucumbers. They proceeded to south shore area - used "look box" to check yesterday's



"BIT"  
"Deen Jaws"

15 NOV.

15 NOV  
TUES,

Bryopsis head counts.

East of <sup>18 pair</sup> pilings there is very little Caulerpa, except inshore. West of pilings Caulerpa seems to be out further.

45 MIN - 15'  
DIVE  
22 23  
V

Anchored just inshore and east of pilings; lots of live coral - including Acropora heads. <sup>no Caulerpa or very little</sup> 1/2 way distance swimming inshore Caulerpa becomes more common, but includes prostrate "grapes", serpulata patches in silt, as well as some erect Caulerpa. Turned right and swam parallel to shoreline. erect Caulerpa on silt bottom, but not dense. coverage like M.M. Depth has varied from 8' - 15'.

16 Nov  
Wed.

Turned seaward after awhile - at 4th piling pair (from end) Caulerpa disappears and Bryopsis patches appear, as well as live coral.

Alan spotted a large "navy" anchor - used for pile driver? Why were pilings put in? <sup>initially to block radio transmission between EP&WP - later abandoned 1960s</sup> Large drifts of Bryopsis in silt areas. No Caulerpa seen with it.



How fast do drifts of Caulerpa  
decompose?

23

15 NOV  
TUES.

X Backnote - Shark fisherman reported  
seeing 2 turtles feed on fish bait  
on their shark hook.

Check "Piliy Beach" for bunkers at ~10pm.  
Beach has sand suitable for nesting. Is  
vegetated. Adjacent to Ironwood tree.  
~200 yards long. Cement "jetty"  
sticks out near west end.

Drove to WP, and from there counted Red hot  
lights - 23 yellowish on front of bunkers,  
plus 9 white on lamp posts.

16 Nov Wed. Bill checked beach between 5:15-5:30am -  
nothing seen.

Up 6:30am Met at Port 7:30am  
and disassembled/packed all gear  
until ~10:30am.  
Got blood sample taken for Cholinesterase.  
results to be mailed.

Departed with Kam in BW at ~12  
noon - Set 1-130' at Site #2  
using aeban anchor downwind, Navy  
type upwind.

Group of Army planning to go to  
Donavan's reef today for lobsters.



1. 15 NOV 83 A Tim Snover stated that  
 WED. over the past 10 months he had  
 made 6 scuba dives at Donovan's Reef  
 and 8 snorkel dives, and had never  
 seen a turtle.

Sam & I first noticed Bryopsis  
 head offshore - bearing <sup>east corner of WP</sup>  
 and red white body. Spotted approx.  
 2 more off WP (offshore) and 5 more  
 heads off beach → MEM (offshore) that  
 were probably not in the original count.  
 Now add them.

DIVE  
 23  
 24  
 W

46 MINUTES <sup>35'</sup> - on several Bryopsis heads  
 out and to the east of emergent heads.  
 These may have been missed on other  
 surveys. Fairly clear water ~40'  
 visibility. Heads are "dome shaped".  
 Most Bryopsis growth is 5' and shallower  
 however some is as deep as 25'.  
 Estimate heads have 80% coverage.  
 Noted 15-2" cable laid out, plus  
 old 55 gal drums. Drifts of Bryopsis  
 in silt areas.

Attempts made to measure the Bryopsis  
 covered tops of the heads - 7' pole spear  
 used - measurements as follows:

15 NOV  
 WED.

largest

Smallest

DIVE  
 24

25 x



		6.4m	6.4 =	
		21'	21'	41.0 m <sup>2</sup>
15 Nov 83				
WED.	1.	3	X 3	
	2.	3 <sup>21'</sup>	X 1 <sup>7.1'</sup>	= 13.4 m <sup>2</sup>
largest	3.	4 <sup>28'</sup>	X 7 <sup>49'</sup>	= 126.7 m <sup>2</sup>
	4.	2 <sup>14'</sup>	X 2 <sup>4.3'</sup>	= 18.5 m <sup>2</sup>
Smallest	5.	2 <sup>14'</sup>	X 1 <sup>7.1'</sup>	= 9.0 m <sup>2</sup>
	6.	4 <sup>28'</sup>	X 4 <sup>8.5'</sup>	= 72.3 m <sup>2</sup>

$$X = 46.8 \text{ m}^2$$

After dive 23 we motored toward East Point looking at *Bryopsis*. head for turtles. 4-5 seen - head - large, all with silt of shells. No painted numbers obvious. We followed one slowly - headed seaward, not too far from channel. I jumped into the water with face mask to see if it had a ~~my~~ painted number but none present.

Motored across the channel within a yard in approx. line with channel markers #9 & #10 we found a number of coral heads with *Bryopsis*. This extends eastward to about the midpoint of Sand Island. Dive 24 25 min at 30', made an arc around one of these heads.

DIVE

24

25 x

Clear on top, but < 30' visibility at the bottom. Surgeon fish and other herbivores on top - presumably



16 Nov. 83

Wed.

They eat the Bryopsis to some extent.  
Bryopsis on the heads of this area does not seem as thick-lush - as off J.I. Apparently there is a relatively narrow band along the coastline where the heads are at the right depth for growth of Bryopsis.

REBAR  
 X  
 EXPERIMENT

Two pieces of iron rebar were thrown out - one each on heads adjacent, and in direct line with channel markers 9 & 10. While motoring in this area we saw 3 juveniles on top of heads - all swam off when boat came near. 1 sighting could have been the same turtle.

At 3:30 pm we motored to iron marker off House Point. Very clear water - coral head - dropped down and dredged channel (first east, then west). Lots of undercuts and depressions for resting turtles, but none seen.

DIVE  
 25

16  
Wed.17 NOV  
THURSDAY



16 NOV During the afternoon, Gail, John &  
Wed. Bill made observations from South  
shore - data attached on following pages.  
At 6:15 I watched the net  
for 15 minutes;

- 1 - large seen MEM area
- 1 - inside WP - east
- 1 - at 6:24pm offshore coral heads

Bill and I pulled net at ~ 7pm -  
nothing caught.

Checked Piling Beach at 10:45am - nothing  
fuel ship came in - saw "17 to drop  
off vent attachment crewman. Consider  
effects of fuel spill on south shore.  
Note that black tar(?) is stuck  
all over top of cement WP seawall.

17 NOV. Collection points along here.

THURSDAY

Bill checked Piling Beach at 5:15-5:30am  
nothing. Later when Cris arrived he  
said that he had never seen a turtle  
beached there. He goes there sometimes  
in the morning to get bait with a  
throw net. He loaned me color  
photos of turtles, and seal w/pup.

Backnotes - Some *Bryopsis* floats.  
Consider - turtles moving in close at  
night to sleep inshore (some evidence).



17 NOV. OP - 6:45am, packed all gear; talked with Lucille about Cholesterol baseline in turtles. Took photographs off Wt.

Departed on MAC flight - 1:35pm.

Sat next to Bill Jackson  
Dept. of Energy  
P.O. Box 29939  
Honolulu 96734

(Hickam AFB Bldg T<sub>2</sub> 3225)  
422-9211

Conducts surveys of people in the Marshalls - that Utrink says turtles are regularly eaten - on a recent (?) trip looks (taken) natives out of eating a captured hawkbill. Says that "dose" in the people's diet is declining. Give more info part of UC - not Federal. Same with Brookhaven.

He can advise on where turtle bone samples can be analyzed.

11/22

Name supplied by Bill Jackson:

EDWARD T. LESSARD

PROJECT - MANAGER

MARSHALL IS. RADIOLOGY STUDY

SAFETY & ENVIRONMENTAL DIVISION

BROOK HAVEN NATIONAL LABORATORY  
ASSOCIATED UNIVERSITIES OF N.Y. INC.  
UPTON, N.Y. - 11937

BILL JACKSON  
1-30-84 TEL. CONF.

666-TEC.

2824250



RICHARD HARTMAN, COL MSC  
 FITZSIMMONS ARMY MEDICAL CENTER  
 DEPT. OF PATHOLOGY & ALS  
 AURORA, COLORADO 80045

AROVON 943-3318/8548

<sup>staff</sup> S. Sargent DAVID HIATT

Radiation Safety officer - Lapi  
 Bone Samples / Algae

Bacteriology - Swabs  
 (Wattage) of existing R. Hat lights?  
 (lumens)  
 Sand Is. light?

Briefing to avoid turtles.



11-29  
TUES

Meeting with Maragos &amp; Lennon at ACE.

Suggestions -

1. Fright of turtles due to their experiences when in the lagoon
2. Hurricane may have wiped islands clean in 1923 when Wetmore expedition visited.
3. Groundwater containing nutrients may persist for many years, & thereby fertilizing nearshore algal growth.

date -

Telephone conversation with  
Fitzsimon A.M.C., as follows:



32

Algae Samples ID'ed By DENNIS RUSSELL  
(Sent 25 Oct. 83)

## PHASE 1

Sample No.Description

- | <u>Sample No.</u>   | <u>Description</u>  |
|---------------------|---|
| 1. WP HEAD 10/12/83 | Collected from hard substrate along S. shore<br>5-10' depth           |
| 2. WP HEAD 10/10/83 | Collected from top of coral head - wave<br>break at low tide; Grazed? |
| 3. 7451 10/4/83     | STOMACH Pumping   |
| 4. 7461 10/5/83     | " "   |
| 5. 7473 10/7/83     | " "   |
| 6. 7476             | " "   |
| 7. 7466 10/5/83     | " "   |
| 8. DIVE 11          | SPARSE growths collected<br>on hard substrate                         |
| 9. DIVE 12 10/12/83 | " " "   |

Sample

- |         |
|---------|
| 1. 748  |
| 2. 748  |
| 3. 749  |
| 4. 751  |
| 5. 756  |
| 6. 748  |
| 7. 748  |
| 8. 755  |
| 9. 756  |
| 10. 756 |
| 11. 749 |
| 12. 751 |
| 13. 756 |
| 14. 75  |
| 15. Div |
| 16. Div |
| 17. Di  |



Algae Samples Sent to Dennis Russell <sup>33</sup>  
for Identifications  
PHASE 2 NOV 18, 1983

Sample NO.

Description

1. 7481 Scraping from skin & shell (mostly plaston)
2. 7485 "
3. 7495 "
4. 7512 "
5. 7565 "
  
6. 7481 Particles found in mouth
7. 7485 "
8. 7555 "
9. 7560 "
10. 7565 "
  
11. 7495 Pumped from stomach
12. 7512 "
13. 7565 "
  
14. 7509 Rinsed fecal pellet
  
15. DIVE 13
16. DIVE 14
17. DIVE 15



Backnote Interview with Wendell Nunes  
 Manager of JA Diving Hall.  
 (See also page 76 of Book 1)

He used to be Dining Room Manager at  
 Coco Palms. Between 1972-75 he  
 fished commercially with members  
 of his family. Flew aircraft  
 spotting fish - also saw turtles  
 so they set nets in those areas.  
 Fishing spots included:

1. PALIKERUA
2. TAKAI BAY (east of Molokai)
3. Left side of Tirola - near  
 river - 60' drop
4. Sewer <sup>outfall</sup> that used to be  
 at Mahilona (Kafaa)

Sold meat to restaurants -  
 especially Wailua Marina...

Once they hauled down turtles in  
 net. They revived them -  
 then cut neck so blood would  
 come out.  
 Lowatose turtles have pale meat.



## NETTING TIMES & LOCATIONS

PHASE II (NO NOCTURNAL SETS)

<u>DATE</u>	<u>TIME</u>	<u>LENGTH OF TIME</u>	<u>SET NO. LOCATION</u>	<u>LENGTH OF NET</u>
11/4-	0730-1800	10.5	#3	130' (39.6m)
11/4-	0800-1800	10	#2	90' (27.4m)
11/5-	0800-1830	10.5	#2	130'
11/5	1000-1830	8.5	#1	130'
11/5	1230-1830	6	#3	90'
11/6	0900-1830	9.5	#2	90'
11/6	0900-1830	9.5	#3	130'
11/6	1100-1830	7	#7	130'
11/6	1100-1830	7	#8	130'
11/7	0830-1830	10	#7	130'
11/7	0830-1830	10	#9	130'
11/7	1000-1830	8.5	#2	90'
11/7	1000-1830	8.5	#3	130'
11/8	0900-1830	9.5	#2	90'



H  
ET

9.6M)

4M)

METER HOURS  
OF NET

416

274

416

337

164

260

376

277

277

396

396

233

337

260

4,419



<u>DATE</u>	<u>TIME</u>	<u>LENGTH OF TIME</u>	<u>SET NO. LOCATION</u>	<u>LENGTH OF NET</u>
<u>I</u> // 8	0900-1830	9.5	#3	130' (39.6m)
// 8	1000-1830	8.5	#7	130'
// 8	1000-1830	8.5	#10	130'
// 9	0800-1830	10.5	#3	130'
// 9	0800-1830	10.5	#11	130'
// 9	0930-1830	9	#2	90' (27.4m)
// 9	0930-1830	9	#1	130'
// 10	0830- <del>1800</del>	9.5	#1	130'
// 10	0830-1800	9.5	#2	130'
// 10	0930-1800	8.5	#3	(90+60) 150 (45.7m)
// 10	0930-1800	8.5	#11	130'
// 11	0800-1800	10	#2	130'
// 11	0800-1800	10	#7	130'
// 11	0800-1800	10	#12	130'
//				



METER HOURS  
OF NET

376

337

337

416

416

247

356

376

376

388

377

396

396

396

5,190



<u>DATE</u>	<u>TIME</u>	<u>LENGTH OF TIME</u>	<u>SET NO. LOCATION</u>	<u>LENGTH OF NET</u>
"/11	0800-1800	10	#3	60'
"/11	1300-1800	5	#1	90' (27.4m)
"/12	0800-1830	10.5	#2	60' (18.3m)
"/12	0800-1830	10.5	#3	130' (39.6m)
"/12	0800-1830	10.5	#7	130'
"/12	0800-1830	10.5	#12	130'
"/12	1000-1830	8.5	#2 <sup>CONTINUATION</sup>	90'
"/13 <sup>SUNDAY</sup>	1000-1830	8.5	#1	130'
"/13	1000-1830	8.5	#2	90'
"/13	1000-1830	8.5	#7	130'
"/13	1000-1830	8.5	#13	60'
"/13	1000-1830	8.5	#14	130'
"/14	0800-1830	10.5	#1	130'
"/14	0800-1830	10.5	#2	130'



F	Length of Net	METER HOURS OF NET	Length of Time	TIME	DATE
		183	10.2	0800-1830	11/14
4m)		137	10.2	0800-1830	11/14
3m)		192	10.2	0800-1830	11/14
4m)		416	10.2	0800-1830	11/12
		416	10.2	0800-1830	11/12
		416	10.2	0800-1830	11/12
		233	10.2	0800-1830	11/12
		337	10.2	0800-1830	11/12
		233	10.2	0800-1830	11/12
		337	10.2	0800-1830	11/12
		156	10.2	0800-1830	11/12
		337	10.2	0800-1830	11/12
		416	10.2	0800-1830	11/12
		416	10.2	0800-1830	11/12

4,225



<u>DATE</u>	<u>TIME</u>	<u>LENGTH OF TIME</u>	<u>SET NO. LOCATION</u>	<u>LENGTH OF NET</u>
11/14	0800-1830	10.5	#11	60' (18.3m)
11/14	0800-1830	10.5	#7	90' (27.4m)
11/14	0800-1830	10.5	#15	130' (39.6m)
11/15	0800-1830	10.5	#2	130'
11/15	0800-1830	10.5	#3	130'
11/15	0800-1830	10.5	#7	90'
11/15	0800-1830	10.5	#16	130'
11/15	0800-1830	10.5	#17	60'
11/16	1230-1900	6.5	#2	130'



METER HOURS  
OF NET

3m)

192

4m)

288

6m)

416

416

416

288

416

192

257

2,881

TOTALS

16,715

Phase II

(68.04%) 1194 (14)

7,851

Phase I

(31.96%) 1122 (7)

= 24,566

I &amp; II

1170 (21)

21 Turtles



	METER HOURS	NO. CAPTURED	CATCH PER M/H
SITE ✓ #1	1,959	1	1959
SITE ✓ #2	4,209	8	535
SITE ✓ #3	3,488	0	
SITE ✓ #7	2,735	5	547
SITE ✓ #8	277	0	
SITE ✓ #9	396	0	
SITE ✓ #10	337	0	
SITE ✓ #11	985	0	
SITE ✓ #12	812	0	
SITE ✓ #13	156	0	
SITE ✓ #14	337	0	
SITE ✓ #15	416	0	
SITE ✓ #16	416	0	
SITE ✓ #17	192	0	

16,715



ASSUMING A CLOSED POPULATION:

7 TURTLES TAGGED, PHASE 1

20 DAYS ELAPSED

14 TURTLES CAUGHT AND TAGGED  
WITH NO RECAPTURES, PHASE 2

HOWEVER IF (OR THE 15TH TURTLE WAS A RECAPTURE)  
1 TAG RECAPTURE HAD  
BEEN MADE, THEN:

$$\frac{7 \text{ tagged}}{x} = \frac{1 \text{ recapture}}{14 \text{ caught}}$$

$$1x = (7)(14)$$

$$x = 98$$

$$1x = (7)(15)$$

$$x = 105$$



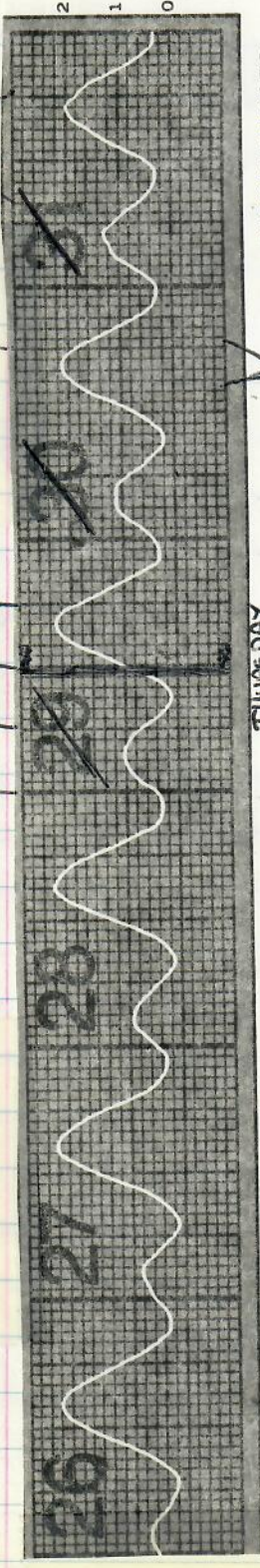
2-13-84 Telephoned Steve West at JA -  
Monday but also spoke with Lee Gore.  
Steve arrived at JA 1969 -  
Sewer line already laid - He  
dove off West Peninsula about  
1-2 years ago, and the algae  
cover looked the same as in 1969.  
Lee Gore mentioned that in  
1964 when laid the sewer  
line, algae was there, but  
not as dense as now,  
to the best of his memory.  
Steve West recently saw a  
turtle surface by the his anchored  
boat, then dive quickly away,  
at Darwin's Reef.



AUGUST 1985

6pm  
65' x 10' x 2 JOINED  
NO TURTLES  
SITE # 7

MONIGHT  
6am (MISC-14)  
6pm  
KIAIKAI



THURSDAY

For tide time at following places, add or subtract from Honolulu time.

PORTS	Hrs. Mins.		Hrs. Mins.		
	+	-	+	-	
HANAIE BAY, KAUAI	-1	40	KAUNAKAKAI, MOLOKAI	0	09
NAWILIWILI BAY, KAUAI	-0	32	KAHULUI, MAUI	-1	48
PORT ALLEN, KAUAI	-0	32	KIHEI, MAALAE BAY, MAUI	-0	14
HALEIWA, OAHU	-1	36	HILŌ, HAWAII	0	59
HANAUMA BAY, OAHU	-1	35	HONOLULU, HAWAII	0	24
KANEHOE BAY, OAHU	-1	48	MAHUKONA, HAWAII	0	24
LAIE, OAHU	-0	16	KEALAKEUA BAY, HAWAII	0	16
WAIANAE, OAHU	-1	15			
WAIMANALO, OAHU	-1	15			

MOON PHASES



MUST HAVE BEEN NEARLY FULL AT JOHNSON TOO, FROM WHAT I SAW.

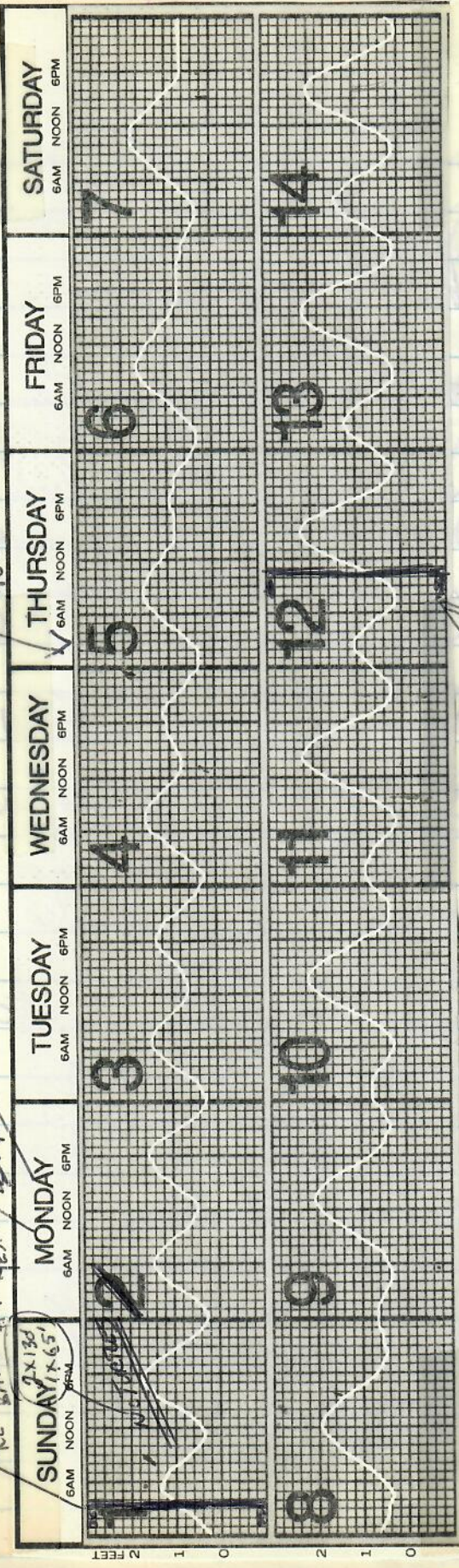
#2 = 65' x 10'  
SITE #3 = 65' x 10'  
SITE #3 - 4.5 hours  
ALGAE COLLECTED (TURTLES)  
1 MANTA - released alive

TIDE CORRECTION - ON HONOLULU.  
High +1 30  
Low +1 26  
-0.1 ft



ROBIN WESTLAKE  
TO SA  
SEPT 85

USCG C-137 TO  
SUN BAYS PT. NETS AS - #7  
A RETRIEVE #7  
YESTERDAY



everyone returned  
from SA



For tide time at following places, add or subtract from Honolulu time.

PORTS	Hrs.	Mins.	PORTS	Hrs.	Mins.
HANALEI BAY, KAUAI	-1	40	KAUNAKAKAI, MOLOKAI	-0	09
NAWILIWILI BAY, KAUAI	-0	32	KAHULUI, MAUI	-1	48
PORT ALLEN, KAUAI	-0	32	KIHEI, MAALAE BAY, MAUI	-0	14
HALEIWA, OAHU	-1	36	HILO, HAWAII	-0	59
HAKUNA BAY, OAHU	-1	35	HONUAPO, HAWAII	-0	24
KANEHOE BAY, OAHU	-1	48	MAHUKONA, HAWAII	-0	24
LAIE, OAHU	-0	16	KEALAKEKUA BAY, HAWAII	-0	16
WAIANAE, OAHU	-0	16			
WAIMANALO, OAHU	-1	15			

*[Faint handwritten notes and bleed-through from the reverse side of the page are visible.]*



NET SITES # 1, 2, 3 & 7  
CAUGHT TURTLES

Aug 20  
Thi

Same Objectives

- 1) Growth rate data - catch and remeasure.
- 2) Stomach Samples using a water hose/pressure system
- 3) Caulerpa & Byropsis samples for Valerie Paul  
(TOXINS) and also Dioxin/Radiological analysis
- 4) Scuba survey areas fin-pointed by J. Samuels people
- 5) Changes in distribution of Caulerpa & Byropsis beds
- 6) Bone & fat samples for radionuclides / Dioxin
- 7) Evidence of nesting on Sand islet / <sup>FORAGING NEAR</sup> other islets
- 8) Search more for sleeping areas - look for turtles  
of the surface - then dig.
- 9) Follow-up interviews. Dive club, fishermen, etc.  
Data on areas of concentration.
- 10) Salvage of dead turtles - bones & gut contents
- 11) Healing and V-notch closure of bone and fat  
biopsies - photograph for publication.
- 12) Mail black white samples to Bill Cooke.
- 13) Locate Coral head across channel where we put Rebar.
- 14) Nighttime checks for baskets; Daytime for marks.
- \* 15) Give Bill Cooke Ridley & sponge(?) samples.



Aug 29, 85 ~ 7:15am arrive at MAC terminal  
 Thursday Hickam for flight to Johnston.  
 Rod Watson, Lew Consiglio, Robert  
 Forsyth, Doris Alcom and me.

Depart C-141 crew flight ~ 11AM.  
 Land at 1pm - same time as Honolulu.

Wake is more isolated than Johnston?

Spent quite a bit of time in  
 briefing room - gas mask sealing.  
 Picked up all baggage (20 pieces)  
 and were met by Bill Cooke  
 and Bob S. Payne (AF Tech. Sergeant).

Drove to assigned quarters in  
 building right next to Dining Room.  
 → Hall phone - 3272  
 Army Account #97718

Bill mentioned that Peter Gallaway  
 had spent time at Johnston

Met Lt. Farley for clearance  
 back and forth to downwind  
 shed. Large pile of soil-sand  
 on JACADS site. NO other  
 construction present.



JOHNSTON TEL. INFO. - 3000

W.J. Cooke FWS.

Office JOC 225

Tel. 3182

Residence 16-413B

Tel. 2715

Bldg 520 - 3<sup>rd</sup>  
Tel. 3472

Doris Alcom



## LOGISTICAL NEEDS

- 1.) 3 portable radio - frequency assignments
- 2.) Vehicle use after sunset - transport gear, etc.
- 3.) 2 Boston Whalers, gas, oil, scuba bottles and refills
- 4.) Access to South shore - ~~Red Dog~~ HAT
- 5.) Gas for vehicle
- 6.) Use of JOC scale - collect data - Surgery on Turtles
- 7.) Area to store gear (Whale Warehouse by Harbor)
- 8.) Requirements for return flight to Honolulu - (MTC & Continental schedules)
- 9.) FAA Flights?
- 10.) Freeze samples



8-29 THURS. Drove with Cooke to JACADS site about 3pm. Immediately saw 5-7 turtles at various frequented sites. Swell and wind present. Green water up & over seawall.

Returned ~ 7pm - only 1 or 2 seen. Stopped at beach both times where seal had been seen.

8-30 FRIDAY Drove to 7:15am - 7:30 W. Peninsula - 7:40 - 7:50am Shark Chute

Driver said not so many sharks seen lately. Chris said more turtles seen lately in this area. Coming from across the channel?

Transferred gear to boat harbor office downstairs - Herb Ching helped. Unpacked nets and joined 2x2 together. Assigned covered area/garage

- 11:15am - Moses gave instructions on boat use & care. Took written test.

8-30  
FRIDAY

- 4 hours  
setting  
traps

W  
8-31  
SAT.



Monk seal seen between pilings and WP - 61  
hauled out. Concern about catching in  
turtle nets?

8-30  
FRIDAY

2:30 pm 2 nets (-120') deployed

by me, Robert and Rodney. <sup>Spoke with Cris and other</sup>  
locals who said that

~4 Hours  
Netting  
+ time

Out at 6:30 pm. Manta are abundant now.  
years. Arrive ~ March-April. Trip out > Sept. Octo.  
Seem to be getting more each

~ 5:00 pm saw floats together  
and white/black of large Manta.

~ 6 pm All except Doris motored to nets.

Site #3 net completely rolled up with  
Manta. Able to cut it free alive by  
moving slow "hooks" <sup>HORNS</sup> on the head of  
manta catch right into legs of net - just  
like the one at <sup>have a way by</sup> Nichol. Proceeded to  
pull up site #2 net - came in nicely.

Sporkel dove to collect *causeria* and  
*bryopsis*. Frozen later that night in WIRI-PACK 3  
for Valerie Pauls.

Woke up ~ 6:15 am

8-31  
SAT.

8:45 am 2 x 65' by 10', SITE 7  
region (double coral-head) <sup>slightly inshore</sup> and to the east.

Robert, Rod, Doris & Lew.

I went to JOC for paperwork on  
departure via MAC or USCG.  
Robert saw one turtle east of site 7 net setting.

9:45 am - WP looking at coral heads.  
2 Turtles seen at closest heads to the right.  
Manta jumped twice by 2  
offshore breeding heads.



8-31 Robt & I checked Site #7 by bike.  
 SATURday 10-10:15am.

Earlier today Chris <sup>Bolubar</sup> said that turtles often "play" ground piling #7 - right side going out - where corals and rubble fill material has been dumped.

~ 11:15am checked by Lew & Donis

~ 1pm checked by Robert & Rodney  
 7 turtles seen from W. Peninsula to double coral head. Manta seen between seawall and Site #7 net.

2:30pm - 2 mantas between net and wall.  
 4 turtles.

4pm check - Robt. & I  
 8 mantas > WP to double  
 4-5 turtles (2 of which were at double)

WP - 4:10pm  
 2 mantas  
 6 turtles (2 in nearest head)

Turtle & Manta together

8-  
SAT

all  
done

9/1/85



8-31-85

SAT Needs

- Seal/turtle posters for Cooke, + turtle literature.
- Correct name of invertebrate found on olive ridley (Cephalopoda?)
- Thank you letter to Cooke.

all done

~ 5:15pm - Robt, me &amp; Doris

I stayed at WP, took photos, and talked to Cris. I counted 7-8 Mantas - 5-6 turtles surfacing here & there. Not very many as 2 heads closest to wall. Cris says seawall here will be reinforced. Robt & Doris saw a manta wave toward the net, slow down and drift to the side.

USCG C-130<sup>USCG 1306</sup> with Admiral lined to depart at ~ 7pm. No. 4 engine didn't work correct, so no take off. Flare replacement sent from Barber's Point at 12:30am 9/1/85. Depart ~ 12:45am. Land Barber's Pt ~ 3:30 AM. July driver took me to Hawaii Kai - arrive ~ 5:45am.

9/1/85







9/1  
Sunday Talked to Rodney by telephone, then later to Robert. 3 nets were set all day today.

2 - 2 x 65' x 10'

2 - 65' x 10'

All blocking off site #7 double coral head. No turtles caught, but turtles seen in between nets, negotiating in and around them. Can obviously see the mesh. Lots of mantas still seen. Many turtles don't seem to be associated with coral heads.

Need ① "Thank you" for Doris card  
② Patch soap

9/2  
Monday Talked to Rodney - 2 turtles caught at site #7  
3 nets, like yesterday.

1) 45 lbs

2) 115 lbs

2 turtles seen underwater at WP.  
not as many mantas seen.

9/3  
TUES.

Talked to Robert 9/4 wed morning in the cafeteria; 9/3 they caught 2 turtles - one at area site #7; one at site #2 or 3. No caught right at sunset. No mantas seen today or yesterday. Probably due to wind shift - coming out of the



8-29-85

WELCOME NEWCOMERS who arrived on yesterday's MAC flight, namely, SSG James L. Burton, SP4s Stanley C. Carter, Michael C. Clay, James G. Daleo, Joseph K. Hill, Andre L. Lackey, Kevin J. Lewallen, Curtis J. Nuti, Mark A. Robinson, Richard D. Soulliere, John A. Talley, MAJ Robert N. Vanderwarker, all for the US Army Chemical Activity-WESTCOM! Welcome also all TDYers -- Doris Alcorn, George Balaz, LT Lewis Consiglieri, Robert Forsyth and Rodney Watson of the National Marine Fisheries;

8-31-85  
TOMORROW'S TIDE AND SUN  
 L 0038 0.2 H 0611 1.8  
 L 1143 0.2 H 1824 2.5  
 Sunrise 0704 Sunset 1932

9-1-85  
SUNDAY'S TIDE AND SUN  
 L 0057 0.2 H 0649 1.9  
 L 1133 0.3 H 1849 2.3  
 Sunrise 0705 Sunset 1931

MONDAY'S TIDE AND SUN  
 L 0117 0.2 H 0728 2.0  
 L 1309 0.5 H 1916 2.1  
 Sunrise 0705 Sunset 1931

TUESDAY'S TIDE AND SUN  
 L 0138 0.2 H 0813 2.1  
 L 1402 0.6 H 1941 1.9  
 Sunrise 0705 Sunset 1930





LAYTON J. O'NEILL  
Senior Health Physicist

UNITED STATES DEPARTMENT OF ENERGY  
NEVADA OPERATIONS OFFICE  
P.O. Box 14100, Las Vegas, Nevada 89114

FTS: 575-0996  
BUS: (702) 295-0996

RES: (702) 648-4144



HOLMES & MARVER, INC.

POL/Transit Alert	- S. K. Wright	Bldg 280	2156	252-C1	3353
Camp Supplies/Plumbing/ Safety & Gen'l Stores Whse	- B. Himalaya	Bldg 100	2137/2393	250-A10	
Electrical Materials Whse	- P. L. Chang	Bldg 396	2386		
Matl Yard/Paint & Property		Bldg 398	2194		
Mechanical/Spare Parts Whse	- A. Ponce	Bldg 395	2568	252-D26	3357
Subsistence Warehouse	- G. Fukushima	Bldg 397	2580	250-C8	

DEPARTMENT OF ENERGY (DOE)  
PACIFIC AREA SUPPORT OFFICE (PASO)

Site Representative - Stephen J. Bolling JOC 226 2122/2356 291-A 2740

FIELD COMMAND, DEFENSE NUCLEAR AGENCY, JOHNSTON ATOLL (FCJ)

Commander	- John G. Woelfel, Lt Col, USAF	JOC 221	3005	Pt Hse	3005
Civil Engr	- R. J. Majka, Major, USAF	JOC 223	3035	293-E	3035
Logistics	- R. H. Jacobson, Jr., Major, USAF	JOC 221	2359	293-C	2359
Operations	- L. Rodriguez, MSGT., USAF	JOC 221	2142	16-401	2233
Pers/Admin	- R. J. Sauerwine, TSgt., USAF	JOC 219	2142	16-402	2361
	- K. C. Harper, SSgt., USAF	JOC 219	2142	16-403	3632
Chaplain	- H. A. Michelson, MAJ, USA	JOC 230	2427/2610	293-A	CHAP



9-5-85 Call from Robert  
 Friday in the early morning - Yesterday  
 they caught one turtle, right at  
 dusk. May have dove into net as  
 they were pulling it in. Robin arrived  
 yesterday morning. No mustards seen  
 anywhere. Wind has now shifted  
 back to normal. Five nets have been  
 set out today. Robert fell in boat  
 yesterday - Rodney speeded boat catching him  
 off balance. Robert noted that  
 Rodney is very susceptible to  
 sea sickness. Goes out only in  
 the calm morning time. Tomorrow will  
 be a day off. Few had previously  
 taken one off a few days ago.

9/1  
TUES

9-7 They took the day off.  
 Sat

9-8 Talked to Rodney at ~10:15 pm.  
 Sun. They caught 2 turtles today. <sup>1 - site #7</sup>  
<sup>1 - WP</sup>  
 Saw a seal briefly the  
 other day of West end of the island.

9/12  
THURS.

9/9 Talked to Robert -  
 Mustard gas operations for the next  
 3 days - I recommended setting all  
 nets at W.P.



HOLMES & Narver, Inc.  
 ENERGY SUPPORT DIVISION  
 PACIFIC OPERATIONS - JOHNSTON ATOLL  
 CONTRACT DE-AC08-76NV00020

SEPTEMBER 1985

EXECUTIVE DEPARTMENT

	OFFICE	PHONE	QTRS	PHONE
Resident Manager	JOC 226	2171/2180	294-E	2505
Radiological Safety Engineer	JOC Rm H	2956	294-A	2956
Safety Engineer	JOC 228	2962	294-A	3961
Senior Admin. Assistant	JOC 226	2180	16-109	2815

ADMINISTRATION & FINANCE DEPARTMENT

General Supervisor	P. J. Butler	JOC 207	3309/2312	293-F	2525
Administrative Assistant	G. J. Muller	JOC 215	2750		
Supervisor, Accounting	R. M. Kaya	JOC 207	2312	16-103	2415
Accountant	H. E. Disney	JOC 207	2312	251-C41	2547
Timekeeping	D. Dumlanta	JOC 207	2183	252-A14	3103
Cashier	A. Pu (OPEN: 0830 to 1115) (1200 to 1515)	JOC 207	2549		

FOR EMERGENCY CASHIER SERVICES AFTER WORKING HOURS, CALL SECURITY 2358

Supervisor, Personnel	R. R. Shono	JOC 211	2512/2535	16-113	2166
Administrative Assistant	M. P. Pada	JOC 211	2535		
Travel Specialist	S. Y. Honda	JOC 211	2535	16-311	2184
Reproduction Services	M. Inoshita	JOC Rms. F&G	3904		
Wage\$Salary/Forms/Central Files/TMO	A. T. Igarashi	JOC 208	2776	699-F	3962
Supervisor, Recreation	R. Suarez	JOC 102	3296/3474	16-112	3297
Librarian/Breeze Editor	L. Kytana	JOC 102C	2277/2577		
Recreation Boathouse	M. Caballero	Bldg 127	2355	16-409	3399
Swimming Pool	M. F. Pavao	Fac. 704	2889	251-C1	2301

CAMP OPERATIONS DEPARTMENT

General Supervisor	G. R. MacCulloch	Bldg 190	3794/2395	293-B	2080
Staff Assistant	S. Murashige	Bldg 190	2395		
Manager, Food Services	W. H. Nimes	Bldg 519	2380	16-105	2435
Supervisor, Housing	C. C. Cabasag	Bldg 190	2595	16-104	2434



AGENT OF

3205  
2284  
2284  
2594  
2437  
2626  
3216  
2856  
2090  
2930  
3713  
2998  
2921  
2362  
3962  
2542  
2362  
2362  
2820  
2408  
2855  
2090  
2362  
2155  
3103  
252-A7  
2552

252-B32  
16-407  
16-407  
294-C  
16-106  
16-208  
16-410  
16-203  
699-D  
16-209  
16-404  
692-D  
692-C  
696-A  
699-F  
16-102  
696-A  
696-A  
16-111  
16-215  
16-201  
699-D  
696-A  
16-108  
2448/CM-3  
2447  
2340/CM-4  
2341/CM-5  
2423/2102  
2563/2772  
2446  
2330/3709  
2550/CM-6  
3926/CM-5  
2215/3926  
2106  
2368  
2552

BLDG 510  
BLDG 4  
BLDG 130  
JOC 222  
JOC 222  
JOC 222  
JOC 222  
JOC 222  
JOC 222  
JOC 222  
JOC 222  
JOC 222  
JOC 222  
JOC 222  
BLDG 287  
BLDG 287  
BLDG 316  
BLDG 316  
BLDG 401  
BLDG 316  
BLDG 40  
BLDG 190  
BLDG 316  
BLDG 110  
BLDG 316  
BLDG 48  
BLDG 48  
BLDG 45  
BLDG 318  
CALL MAINTENANCE TROUBLE DESK, 2552

5/51  
2334/2761  
2334/2203  
2346/CM-2  
2346/2957  
2957  
2225  
2225  
2225  
2225  
2225  
2225  
2225  
2318/2793  
2318/2793  
2448/CM-3  
2447  
2340/CM-4  
2341/CM-5  
2423/2102  
2563/2772  
2446  
2330/3709  
2550/CM-6  
3926/CM-5  
2215/3926  
2106  
2368  
2552

BLDG 510  
BLDG 4  
BLDG 130  
JOC 222  
JOC 222  
JOC 222  
JOC 222  
JOC 222  
JOC 222  
JOC 222  
JOC 222  
JOC 222  
JOC 222  
BLDG 287  
BLDG 287  
BLDG 316  
BLDG 316  
BLDG 401  
BLDG 316  
BLDG 40  
BLDG 190  
BLDG 316  
BLDG 110  
BLDG 316  
BLDG 48  
BLDG 48  
BLDG 45  
BLDG 318  
CALL MAINTENANCE TROUBLE DESK, 2552

BLDG 510  
BLDG 4  
BLDG 130  
JOC 222  
JOC 222  
JOC 222  
JOC 222  
JOC 222  
JOC 222  
JOC 222  
JOC 222  
JOC 222  
JOC 222  
BLDG 287  
BLDG 287  
BLDG 316  
BLDG 316  
BLDG 401  
BLDG 316  
BLDG 40  
BLDG 190  
BLDG 316  
BLDG 110  
BLDG 316  
BLDG 48  
BLDG 48  
BLDG 45  
BLDG 318  
CALL MAINTENANCE TROUBLE DESK, 2552

BLDG 510  
BLDG 4  
BLDG 130  
JOC 222  
JOC 222  
JOC 222  
JOC 222  
JOC 222  
JOC 222  
JOC 222  
JOC 222  
JOC 222  
JOC 222  
BLDG 287  
BLDG 287  
BLDG 316  
BLDG 316  
BLDG 401  
BLDG 316  
BLDG 40  
BLDG 190  
BLDG 316  
BLDG 110  
BLDG 316  
BLDG 48  
BLDG 48  
BLDG 45  
BLDG 318  
CALL MAINTENANCE TROUBLE DESK, 2552

BLDG 510  
BLDG 4  
BLDG 130  
JOC 222  
JOC 222  
JOC 222  
JOC 222  
JOC 222  
JOC 222  
JOC 222  
JOC 222  
JOC 222  
JOC 222  
BLDG 287  
BLDG 287  
BLDG 316  
BLDG 316  
BLDG 401  
BLDG 316  
BLDG 40  
BLDG 190  
BLDG 316  
BLDG 110  
BLDG 316  
BLDG 48  
BLDG 48  
BLDG 45  
BLDG 318  
CALL MAINTENANCE TROUBLE DESK, 2552

BLDG 510  
BLDG 4  
BLDG 130  
JOC 222  
JOC 222  
JOC 222  
JOC 222  
JOC 222  
JOC 222  
JOC 222  
JOC 222  
JOC 222  
JOC 222  
BLDG 287  
BLDG 287  
BLDG 316  
BLDG 316  
BLDG 401  
BLDG 316  
BLDG 40  
BLDG 190  
BLDG 316  
BLDG 110  
BLDG 316  
BLDG 48  
BLDG 48  
BLDG 45  
BLDG 318  
CALL MAINTENANCE TROUBLE DESK, 2552

Manager, Clubs

ENGINEERING DEPARTMENT

- Resident Engineer Assistant
- Administrative Assistant
- Civil Engineer
- Electrical Engineer
- Mechanical Engineer
- Structural Engineer
- Assistant Engineer
- Assistant Engineer
- Designer/Maint. Control
- Maint. Control Planner

FIRE DEPARTMENT

- Fire Chief
- Staff Assistant

MAINTENANCE AND PLANTS OPERATION DEPARTMENT

- General Superintendent
- Staff Assistant
- Supt., Bldgs & Grounds
- Supt., Electrical
- Supt., Transportation
- Supt., Communication
- Asst. Supt., Construction
- Asst. Supt., Marine Ops
- Asst. Supt., Mechanical
- Asst. Supt., Operation
- Supt., Plants
- Supt., Power Plant
- Asst. Supt., Plant
- Distillation

ONLY.....2552 (After Hrs., 2358)



MEDICAL DEPARTMENT

Chief Medical Officer - Dr. R. A. Huffman, Jr.  
Senior Medical Officer - Dr. E. L. Kehoe  
Supvr., Medical Services - N. J. Francisco  
Staff Assistant - R. A. Sevilla

OFFICE                      PHONE  
OTRS                      PHONE

Bldg 405                      2731/2345                      294-F                      2241  
Bldg 405                      2731/2345                      294-B                      2506  
Bldg 405                      2345                      252-D7                      3128  
Bldg 405                      2345                      686-E                      2560

SECURITY ENFORCEMENT DEPARTMENT

Captain - G. H. Brown  
Desk Sergeant

JOC 125                      2021                      696-B                      2541  
JOC 125                      2358/2576

SUPPLY DEPARTMENT

General Supervisor - R. M. Katena  
Staff Assistant - K. L. Leyson  
Computer Operator - S. F. Suttley

Bldg 190                      2157/3755                      699-E                      2967  
Bldg 190                      3755/2157                      16-206                      2035  
Bldg 190                      2164/3755                      252-B41

Supvr., Matl/Property Acct - A. B. Calana  
Property Records - R. K. Ely  
Subsistence Coordination - B. Ho

Bldg 190                      2857                      699-E                      2967  
Bldg 190                      2164                      250-D15  
Bldg 190                      2857

Supvr., Material Control - R. M. Katena

Bldg 190                      2932/2971                      699-E                      2967

Traffic & Warehousing - C. Balubar  
Air Pax & Cargo Coord (MAC) - S. T. Matsuura

Bldg 285                      2266/2268                      16-101                      2266  
Bldg 285                      2252/2343                      250-C5                      2252

POL/Transit Alert - S. K. Wright

Bldg 280                      2156                      252-C1                      3353

Camp Supplies/Plumbing/  
Safety & Gen'l Stores Whse - B. Himalaya  
Electrical Materials Whse - P. L. Chang  
Matl Yard/Paint & Property  
Mechanical/Spare Parts Whse - A. Ponce  
Subsistence Warehouse - G. Fukushima

Bldg 100                      2137/2393                      250-A10  
Bldg 396                      2386  
Bldg 398                      2194  
Bldg 395                      2568                      252-D26                      3357  
Bldg 397                      2580                      250-C8

DEPARTMENT OF ENERGY (DOE)

PACIFIC AREA SUPPORT OFFICE (PASO)

Site Representative - Stephen J. Bolling

JOC 226                      2122/2356                      291-A                      2740



FIELD COMMAND, DEFENSE NUCLEAR AGENCY, JOHNSTON ATOLL (FCJ)

Commander	- John G. Woelfel, Lt Col, USAF	JOC 221	3005	Pt Hse	3005
Civil Engr	- R. J. Majka, Major, USAF	JOC 223	3035	293-E	3035
Logistics	- R. H. Jacobson, Jr., Major, USAF	JOC 221	2359	293-C	2359
Operations	- L. Rodriguez, MSgt., USAF	JOC 221	2142	16-401	2233
Pers/Admin	- R. J. Sauerwine, TSgt., USAF	JOC 219	2142	16-402	2361
	- K. C. Harper, SSgt., USAF	JOC 219	2142	16-403	3632
Chaplain	- H. A. Michelson, MAJ, USA	JOC 230	2427/2610	293-A	CHAP

U.S. ARMY CHEMICAL ACTIVITY - WESTCOM (USACAW)

Commander	- Robert D. Orton, COL, USA	JOC 309	3949	297	2126
XO	- J. C. Doesburg, MAJ, USA	JOC 309	2649	290-B	2412
PMO	- S. C. Lewis, MAJ, USA	JOC 317	3395/3582	290-E	2890
COMD SGT MAJ	- G. E. Hendrix, CSM, USA	JOC 309	2992	16-214	2975

Headquarters, Headquarters Company (HHC)

Commander	- Donald W. Bailey, CPT, USA	JOC 105	2112/2765	290-D	2872
1SG	- J. L. McLendon, MSGT, USA	JOC 105	2112	18-113	2010

Military Police Company (MP CO)

Commander	- Edwin A. Hayes, Jr., CPT, USA	JOC 315	3395/3582	291-D	3737
XO	- R. L. Farley, 1LT, USA	Bldg 728	2073	291-D	3737
1SG	- W. L. Eiland, SFC, USA	Bldg 694-F	3739	694-F	3739

U.S. COAST GUARD

1957 ISG (KENTRON)	- R. A. Shell, CWO2, USCG	Sand Is	2305/2366	290-F	2305
CABLEHEAD (KENTRON)	- A. F. Albano, Site Supvr	JOC 202	2151	16-309	2173
AAFES (BX)	- A. F. Albano, Site Supvr	JOC 217	3064	16-309	2173
AIR MICRONESIA	- E. C. Miguell, Manager	Bldg 248	2944/2128	16-308	2944
AFRTS (Radio & TV)	- Site Representative	JOC 211	2535	16-408	2282
APO SF 96305	- B. A. Frye, SP5, USA	Bldg 241	2495	251-C23	2081
WEATHER STATION	- P. P. Respicio, Chief Postal	Bldg 288	2310		
SANDIA		Bldg 276	2901		
FISH & WILDLIFE SVC	- W. J. Cooke, Ph.D, Biologist	JOC 225	3182	16-413B	2715

PLEASE CALL 2180 TO REPORT ANY CHANGES TO THIS LISTING.



9-5-85 Call from Robert  
 Friday in the early morning - Yesterday  
 they caught one turtle, right at  
 dusk. May have dove into net as  
 they were pulling it in. Robin arrived  
 yesterday morning. No wants seen  
 anywhere. Wind has now shifted  
 back to normal. Five nets have been  
 set out today. Robert fell in boat  
 yesterday - Rodney speeded boat catching him  
 off balance. Robert noted that  
 Rodney is very susceptible to  
 sea sickness. Goes out only in  
 the calm morning time. Tomorrow will  
 be a day off. Few had previously  
 taken one off a few days ago.

9/1  
TUES

9-7 They took the day off.  
 Sat

9-8 Talked to Rodney at ~10:15 pm.  
 Sun. They caught 2 turtles today. <sup>1 - site #7</sup>  
<sub>1 - WP</sub>  
 Saw a seal briefly the  
 other day of West end of the island.

9/12  
Thurs.

9/9 Talked to Robert -  
 Mustard gas operations for the next  
 3 days - I recommended setting all  
 nets at W.P.  
 Mon.



9/10  
TUES. Robt. called my office - They caught 3 turtles yesterday - 1 large > 200 lbs and 2 medium. Got blood from 2. All caught at W.P. - 2 at ~ 3pm, 1 at sunset when nets were pulled.

BACKNOTE  
A couple of turtles seen at filings 9 & 10.

9/11  
WEDNESDAY Called Robert - no turtles caught yesterday. Not many even seen in the larea (2-3 only). He has the name of DOE(?) who is interested in PU (239-240) analysis.

9/12  
Thurs. [ Nets out <sup>yesterday</sup> until ~ 3pm. Snagged on coral heads. Everyone returned to Honolulu today via MAC.



1.	4170 (2 tubes)	9/09	71.8	52.4	Johnston Atoll
2.	4153 (2 tubes)	9/08	73.9	58.2	Johnston Atoll
3.	4161 (2 tubes)	9/09	61.9	37.8	Johnston Atoll
4.	7437	9/02	50.4	18.0	Johnston Atoll

WHOLE FROZEN BLOOD SENT TO Dr. Sylvia BRADEN-GALLOWAY  
ON SEPT. 17, 1985



1

9/2/85

TAG NOS.

LEFT = 7433  
FRONT (3-4 scale)\* RIGHT = 7435  
FRONT (3-4 scale)

Wt. 105 1/2 # (48.0 kg)

LEFT = 7434  
FRONTRIGHT = 7436  
REAR

SITE 7

SC - 69.1 x 55.9

N = 68.6

CC - 74.3 x 70.5

H - 10.2

PL - 55.8

T - 14.5

R FL - 10.4

#7433 Stomach

Polysiphonia tsudana TRACE  
Caulerpa racemosa TRACE

NOTES: SMALL FRESH ABRAS. ON TIP R. FOREFLIPPER. GREEN ALGAE ON PLASTRON, RED ON HEAD REGION <sup>& tail</sup>. CARAPACE NOTCH SAMPLES TAKEN... GOT BLUE PAINT ON THEM FROM NEW SAW; NOTCHED MADE IN 10<sup>th</sup> + 11<sup>th</sup> ON BOTH SIDES. TRIED TO GET STOMACH SAMPLE, BUT ~~NOTE~~ <sup>small amount</sup> OBTAINED; TURTLE MADE 'GURGLING' SOUNDS, SO STOPPED TRYING TO GET SAMPLE. PAINTED #1 (BOTH SIDES). TRIED TO DRAW BLOOD - NONE OBTAINED. TURTLE RELEASED BY BOAT RAMP 1420.

PHOTOS TAKEN: Roll #1  
#8 = OVERVIEW (RIGHT SIDE VIEW)  
#9 = WEDGES  
#10 = HEAD VIEW

SAMPLES TAKEN:

1) CARAPACE (4 wedges)

2) small amount STOMACH CONTENTS

\* old tear in flap region of right front flipper



#2

9/2/85

TAG NOS.LEFT = 7437  
FRONT

RIGHT FRONT = 7439

LEFT = 7438  
FRONT  
(3-4 SCALE)

RIGHT REAR = 7440

WT. 39½ # (18.0 kg)

SITE 7

SC = 50.4 x 41.4 N = 50.2

CC = 53.8 x 49.0

H = 8.0

PL = 41.3

T = 9.5

RFL = 7.4

#7437 Stomach

Bryopsis pennata - TRACE  
Griffithsia sp. - TRACE

NOTES: GREEN ALGAE ENTIRE UNDERSIDE. 4 CARAPACE SAMPLES TAKEN.  
STOMACH SAMPLE OBTAINED. BLOOD (~ 2/3 TUBE) DRAWN FROM NECK  
(DORSAL, LEFT SIDE). TURTLE QUIET; "SHOCKER" NOT USED.  
1656 = TURTLE RELEASED AT OUR BOAT MOORING.

PHOTOS TAKEN:

#11 Side view

#12 Front view

SAMPLES TAKEN

- 1) CARAPACE (4 WEDGES)
- 2) STOMACH CONTENTS
- 3) ~ 2/3 TUBE BLOOD (15mm tube)



3

9/3/85

WT = 110 # (50.0 kg)

TAG NOS.

RIGHT FRONT = 7441

LEFT FRONT = 7443

RIGHT FRONT = 7442  
(3-4 scales)

LEFT REAR = 7444

SC =  $69.8 \times 52.2$  N = 69.6CC =  $74.0 \times 66.7$ 

H = 10.1

PL = 57.5

T = 16.0

RFL = 11.2

SITE  
#7  
(west side net)

#7441 Stomach

Caulerpa racemosa var. peltata

NOTE: RED AND GREEN ALGAE ... MUCH GREEN ON PLATRON. 4 CARAPACE WEDGES TAKEN. STOMACH SAMPLES OBTAINED. NO BLOOD OBTAINED.

("SHOCKER" NOT USED).

Released at 1725

Looks Thick! C/S width ratio = 1.28

PHOTOS TAKEN:

- #13 Side
- 14 Rear side
- 15 front

SAMPLES TAKEN:

- 1) CARAPACE (4 wedges)
- 2) STOMACH CONTENTS



4

9/3/85

TAG NOS.

RIGHT = 7445  
FRONT

LEFT = 7447  
FRONT

RIGHT = 7446  
FRONT  
(3-4 scale)

LEFT = 7448  
REAR

WEIGHT = 231\* (105.0 kg)

SITE #3  
(EAST SIDE NET)

SC = 88.4 x 70.3 N = 88.0

CC = 93.0 x 87.7

H = 12.0

PL = 70.6

T = 24.5

RFL = 13.7

#7445 Stomach

Halophila ovalis 50%  
Caulerpa racemosa var. peltata 50%  
Polysiphonia tsudana TRACE  
Lyngbya sp. TRACE

NOTE: VERY BIG TURTLE. GREEN ALGAE - MUCH ON PLASTRON; RED ALGAE AROUND TAIL, AND BETWEEN CARAPACE AND TAIL. CARAPACE SAMPLES TAKEN (4 WEDGES). UNABLE TO OBTAIN BLOOD - TRIED, BUT NONE. STOMACH SAMPLE OBTAINED. (USED SHOCKER). TURTLE RELEASED = 2125.

PHOTOGRAPHS

16 = SIDE VIEW (PLASTRON)

17 = HEAD VIEW (PLASTRON)

} note:  
CARAPACE PHOTO NOT TAKEN -

SAMPLES:

1) CARAPACE

2) STOMACH CONTENT

5

WEI

SC :

CC :

H :

PL :

T :

RFL

NOTE

CARA

DRAP

TUR

PHOTO

SAMP



5 9/5/85

TAG NOS.  
RIGHT = 7449  
FRONT

4151  
LEFT FRONT = ~~4151~~

RIGHT FRONT = 7450  
(3-4 scale)

4152  
LEFT REAR = ~~4152~~

WEIGHT = 95 # (43.2 kg)

#  
SITE 7

SC = ~~68.1~~ 68.1 x 54.2 N = 67.5

CC = 72.6 x 68.6

H = 9.9

PL = 55.3

T = 115

RFL = 10.6

#7449 Stomach

Halophila ovalis 60%  
Bryopsis pennata 40%  
Griffithsia sp. TRACE  
Ceramium sp. TRACE

NOTE: GREEN ALGAE; RED (ON VENTRAL SKIN). HAD TO USE SHOCKER.  
CARAPACE SAMPLES TAKEN. TRIED TO GET BLOOD, BUT UNABLE TO  
DRAW ANY. OBTAINED STOMACH SAMPLE (CONTENTS).  
TURTLE RELEASED 2130 (BY OUR BOAT DOCK).

PHOTOGRAPHS:

18 = HEAD ON (OVERVIEW) - before #5 put on

19 = " - after #5 put on

20 = DORSAL VIEW - after #5 put on

SAMPLES:

1) CARAPACE (4 WEDGES)

2) STOMACH CONTENTS



#6 9/8/85  
weight - 128<sup>#</sup> (58.2 kg)

Tag nos. left  
Right front = 4156 front = 4153  
left front = 4154 left rear = 4155  
(3-4 scale)

SC = ~~73.9~~ 73.9 x 57.2 N = 73.4  
CC = 80.1 x 72.5  
H = 10.2  
PL = 59.2  
T = 15.0  
RFL = 11.1

SITE #7  
(EAST SIDE NET)

Turtle sighted in net at 1305 hrs. Measurements taken at 1400. Painted w/ white spray paint 6 on both sides of carapace. RFF nail area bleeding some; Carapace samples taken (10<sup>th</sup> + 11<sup>th</sup> notches). 2 tubes blood collected. ("Stoeker" used) for stomach samples + blood. Released 1551.

#4153 Stomach

Polysiphonia tsudana - TRACE  
Caulerpa racemosa - TRACE

PHOTOGRAPHS:

- 21 = SIDE view
  - 22 = RIGHT REAR (CARAP. NOTCHES) " " " " "
  - 23 = HEAD view
  - 24 = SIDE view
- Healed notch in RHI groin

SAMPLES TAKEN:

- 1) CARAPACE (4 WEDGES)
- 2) BLOOD
- 3) STOMACH CONTENTS  
Completed 1530h

#  
Wei  
SC =  
CC =  
H =  
PL =  
T =  
RFL =  
Mea  
both  
obtai  
tags  
San  
1)  
2)  
PHO



#7 9/8/85

Weight = 61# (27.7kg)

SC = 58.5 x 46.6

CC = 63.2 x 56.1

H = 9.3

PL = 45.4

T = 12.5

RFL = 9.8

N = 57.9

Tag nos.

right front = 4157

left front = 4160

right front = 4158  
(3-4 scale)

left rear = 4159

SITE  
#3  
(west side net)

#4157 (7) Stomach

Caularpa racemosa var. peltata  
2 amphipods

Measurements taken at 1730; Spray painted 7 on both sides of carapace; TRIED TO GET BLOOD, BUT NONE OBTAINED. Stomach sample obtained. (Some bleeding from tags.)

Samples taken:

- 1) Carapace - gels
- 2) Stomach contents

PHOTOGRAPHS:

25 = SIDE VIEW

26 = HEAD VIEW

27 = (LEFT) SIDE VIEW

28 = DORSAL VIEW

29 = VENTRAL ("NODULES" by tail)

30 =



80

8.

9/9/85

WT = 83 # (37.7 kg)

TAG  
NDS:

LEFT FORE = 4161

LEFT FORE = 4163  
(3-4 scale)

RIGHT FORE = 4162  
(3-4 scale)

RIGHT Hind = 4164

SC = 61.9 x 50.7

N = 61.5

CC = 66.8 x 61.8

H = 9.3

PL = 51.5

T = 13.5

RFL = 104.2

SITE  
# 3  
(north side net)

#4161 Stomach

Bryopsis sp. TRACE  
3 amphipods

note: Tear in "armpit" right FF, so no tag put there. Measured.

Sprayed w/ #8. 4 carapace samples taken. ~ 1/2 TEST TUBES

BLOOD OBTAINED. STOMACH CONTENTS OBTAINED. (note: SHOCKER used)

~ 1830 = TURTLE RELEASED.

(NOTE: TUMOR (~1" diam) in right

armpit.)

SAMPLES:

- 1) CARAPACE (4 wedges)
- 2) BLOOD.
- 3) STOMACH CONTENTS

PHOTOGRAPHS:

31 = PLASTRON

32 = left side / dorsal

33 = HEAD ON

} note: no # on carapace yet.

TAG (4166)



9. 9/19/85

WT = 225 lbs (102.3 kg)

SEX = male

## TAG. NOS.

LEFT FORE = 4165

RIGHT FORE = 4168

LEFT FORE = ~~4166\*~~  
4167 (3-4 scale)

RIGHT HIND = 4169

SC = 86.5 x 65.1

N = No. notch

CC = 91.0 x 86.0

H = ~~12~~ 12.7PL = ~~A~~ 69.6 cm

T = 34.0

RFL = 13.9

#4165 (9) Stomach.

Caulerpa racemosa TRACESphacelaria furcigera TRACEAcrochaetium sp. TRACESITE  
#3  
(Southside net)NOTE: TURTLE HUGE - WORKED WITH IT IN BACK OF PICKUP.

TRIED TO DRAW BLOOD BUT NONE OBTAINED (... NECK LEATHERY,

KEPT PULLING IT IN).

EYES "STRATIFIED" = START OF

"TUMORS" - OR hemorrh. membranes - front portion of <sup>both</sup> EYES.PAINTED 9 ON BACK (NO UNDERLINE) ... 9

BOTH SIDES. TURTLE RELEASED ~ 1930 at boat ramp.

SAMPLES:

1) CARAPACE

2) STOMACH

AHL DISTAL partly missing  
but healed.PHOTOGRAPHS:

34 = RIGHT SIDE

35 = RIGHT SIDE

} note: no #9  
on it when  
photos takenTAG (4166 RUINED END OF FILM ROLL  
DURING TAGGING)



(10)  
9/9/85

## TAG. NOS.

RIGHT = 4170  
FORELEFT = 4172  
FORERIGHT = 4171  
FORE  
(3-4 scale)LEFT = 4173  
REAR

WT = 115 # (52.3 kg)

SC = 71.8 x 55.3 N = 71.1

CC = 76.5 x 71.5

H = 10.1

PL = 58.3

T = 14.5

RFL = 11.0

SITE  
#3  
(North side net)

#4170 (10) Stomach

Polysiphonia tsudana TRACEHalophila ovalis TRACELyngbya sp. TRACE

chips of dark blue paint

Note: Turtle had very dark carapace. Shockers used.  
2035 = turtle released at Boat Ramp.

SAMPLES:

- 1) CARAPACE (4 wedges)
- 2) BLOOD (2 partial tubes)
- 3) STOMACH CONTENTS.

PHOTOGRAPHS: Roll #2

FRAME 1 = HEAD on view

2 = LEFT SIDE view

3 = DORSAL view

} note: photos taken inside  
with fl. light — no flash.



ROBERT FORSYTH - DIVES AT JJA IN 1985

Scuba

Date	Location	Max Depth	Time	Partner
9/1/85	W. Peninsula (site 2-3)	32'	33 min	Lew
9/2	Breaking C. Heads W. Pen.	35'	23	Lew
9/7	S. of N. Island	35'	55	Lew

Snorkel

Date	Location	Time	Partner
9/3	Buoy 9 & 10	20 min	Doris



DORRINGTON IS.  
All measurements in cm - 1985

Tag #	Carapace length		Plastron length	Tail length	Head width	Weight (kg)		
	Straight	Curved						
7433-36	69.1	74.3	55.9	70.5	55.8	14.5	10.2	48.0
7437-40	50.4	53.8	41.4	49.0	41.3	9.5	8.0	18.0
7441-44	69.8	74.0	52.2	66.7	57.5	16.0	10.1	<del>50.0</del>
7445-48	88.4	93.0	70.3	87.7	70.6	24.5	12.0	105.0
7449-52	68.1	72.6	54.2	68.6	55.3	11.5	9.9	43.2
4153-56 <del>4153-56</del>	73.9	80.1	57.2	72.5	59.2	15.0	10.2	58.2



4157-60 58.5 63.2 46.6 56.1 45.4 12.5 9.3 27.7

4161-64 61.9 66.8 50.7 61.8 51.5 13.5 9.3 37.7

4165-69 86.5 91.0 91.0 86.0 69.6 34.0 12.7 102.3

4170-73 71.8 76.5 55.3 71.5 58.3 14.5 10.1 52.3



## SUMMARY OF SPECIES LISTED

Seagrass (flowering plant)

Halophila ovalis (R. Br.) Hook

CHLOROPHYTA (green algae)

Bryopsis pennata Lamx.

Caulerpa racemosa (Forsskal) J. Ag.

Caulerpa racemosa var. peltata (Lam.) Eubank

PHAEOPHYTA (brown algae)

Sphacelaria furcigera Kutzing

RHODOPHORA (red algae)

Polysiphonia tsudana Hollenberg

Griffithsia sp.

Ceramium sp.

Acrochaetium sp.

CYANOPHYTA (blue-green algae)

Lyngbya sp.

George,

There was very little that could be identified in these samples. I found a lot of mush and epithelial cells, but few algae. Some of the algae identified are typical of skin or shell algae (Polysiphonia tsudana, Sphacelaria furcigera, Acrochaetium and Lyngbya). I found a bit of terrestrial plant material in a couple of samples, but could not place it to grass, tree, etc. A couple of samples had blue paint chips in them (#4170 in particular).



42

## APPENDIX 2

## List of persons interviewed:

Francisco Aguinaldo  
- Cris Balubar  
Lucille Bodnar  
- Moses Caballero  
Herb Ching  
Dave Fung  
Lee Gohr  
Jim Hashimoto  
Kent Hiner  
Tom Matsuura  
Ed Mattson  
- Wendell Nunes  
Ralph Ogata  
Mike Pavao  
Pat Plunkett  
Wendell Pu  
Phil Roseberry  
- Jake Sitter  
Tim Snover  
Gary Stillman  
- Rudy Suarez  
Steve West  
Irv Wolf  
Claire Wombacher  
Charles H. U. Young



88. PRELIMINARY TRIP FOR JATA III

10 AUG 87 Depart MAC 9:45 am for JA -  
all paid by FWS - driven to terminal at  
Monday Hickam by Mel D'Amico. 2 hour flight.

Briefing lectures upon arrival,  
including one on the refuge by Doug  
Forseell. About 1000 people now on  
island. Exterior of JACADS looks  
completed.

Doug drove me in  
golf cart to Room 214A near  
JDC. Shared bathroom -

Airforce Major (DNA) DAVE Perella  
comes here for 30 days at a time.

Doug loaned me his bicycle  
and I pedaled to East  
Peninsula - photos of 2

2:45 pm wanted right next to sea  
wall. No *Caulerpa* seen here.  
Noted plastic trash debris -  
pieces blow into the water.

Doug reported break in  
sewer line near main  
pump on W. Peninsula (seen later).  
No turtles seen off E.P.

Pedaled past iron girders -  
noted 2 cement-block steps  
(check previous photos. Western  
one had raw sewage flowing  
out from it - obviously  
the diverted sewage from pump.)

3:15  
pm

Diana  
3/2

Photo  
in



## NEEDS / QUESTIONS / ACTIONS

- Sewer Reimbursement? Sewer EIA/EIS?
- Raise net -- hold up with traps
- No recommendation followed, or referred to.
- Sightings of turtle concentrations elsewhere?
- Darby <sup>IRON</sup> Caulerpa finding? <sup>PLUTONIUM ANALYSIS</sup>
- <sup>DIOXIN BY DNA</sup> <sup>STORAGE, SCALE, JOC</sup> Trip, quarters, boat, access -- i.e.
- <sup>SEWER</sup> Tools to do the job, if undertaken.
- <sup>130</sup> Sewer pulse rate now, with <sup>130</sup> people - 4x previous occupation? <sup>see memo to body</sup>
- Volume now of sewer (holding tank volume)
- Shark fishing? channel edge.
- TIME & NUMBER & SITE OF TURTLE OBSERVATION
- Doug done any?
- Stranded/dead turtle reports?
- Trip report memo.
- JACADS well into construction ... NO ONE CONTACTED US.
- <sup>HAVE</sup> Lennon --- we've met our requirements.
- Need young's BW photo of Tiger shark.
- Shark Fishing - A&N Cherry Picker?
- Tower/TANK HEIGHT
- Need "Repetitive Counts"
- <sup>Plutonium in molluscs?</sup> Allison Kay - Molluscs -
- Housing truck -- request require in proposal. Schrieber gets a truck.
- Dates of JACADS I attended



10 AUG 87

MONDAY W.P.

3:35 - 4:30pm watched from

10A

New seawall blocks being installed. Cable snarl in the water.

Many turtles seen - most associated with head. Previously I'ded as being important. Sizes ranged from (very small (15") to

WP  
region -  
(9)

very large (36") <sup>est. 4 on head closest to WP</sup>. ~~Most~~ heads obviously feeding. No turtles stayed at the surface "loafing". ~~Fast~~ Fast surface interval. Doug reports no boats allowed along this side now.

Pedaled back to room - to harbor-boat house. Then walked to dinner - 5:15pm.

Met by Doug at 6:30pm - drove to CP (est. 2 med. on large (double-jointed) head to east. By girders 2-3 seen offshore. Note confusion often with Mantas. At WP fewer turtles seen than earlier. <sup>est. 5</sup> Mainly surfacing between head - Cambaja areas? - one showed fight-response to us.

FOR CHEM WE

11A  
TUE

\*→



10 AUG. Drove then all the way around island - sunset - twilight. Chute reported no longer used. Dump at West "dock". EPA requirement?? New underground bunkers have been built - Steel buildings no longer have gas. We looked at wooden platform for "turtle tower" Also possible use of steam tower chimneys.  
Walked to Joe Chapin office for 9-9 line. call to Fin, Christian & Paul

FOR CHEMICAL WEAPONS

11 AUG 87 UP 6:15 am - breakfast -  
TUES. Met Doug at Sam + C.O. Air Force Colonel.

Dorby Iron - Cauberpa racemosa  
sites 25-40' deep -

Site 81 (?) + ? "Common" and "Abundant" categories.

used Xerox.  
Met "Mike" and gave him sighting cards (Rec. Services).

Doug reported seal at West Wharf a few months ago.

\*\* Danger zone for <sup>mine</sup> gas will be extended to include all of West Point.



11 AUG 87 Pedaled to east point, then to WP.  
 TUESDAY Watched area from 12:30 - 1 pm.  
 Low tide. 7 seen to the east, 3 to the west = (10) total

Slept from 145 - 245 pm.

3 pm Met Doug at Harbor for survey  
 in his 23' former USCG  
 boat. Proceeded to the west along  
 north shore - markers now  
 in place. North channel also  
 marked.

Noted floating target for 50 cal  
 machine gun near West camera  
 stand. Motored slowly around  
 west channel and heads - no  
 turtles seen.

At 4 pm proceed to survey  
 count turtles along South Shore -  
2 miles distant.

x — wide.

Shade from passing clouds blocks  
 ability to census.

11 AUG  
 TUESDAY



Top of Coral Head = CH  
 open water = OW

4-5:30 PM

11 AUG 87

TUES

<u>Number Seen</u>	<u>Site</u>	<u>Area</u>
1	OW	West end
2	100M off CH double	"
<del>1</del>	OW	off metal Building
3	OW	Start of Bunkers
5	CH double	netting site
1	OW	near seawall
1	CH subtidal	
1	OW	
1	CH	
2	CH	
1	OW	near buoy
3	CH	
2	CH	just W of WP
1	CH	" "
1	CH	" "
1	CH	off WP
2	CH	" "
3	near CH	2 emergents
2	CH	
1	OW	east of WP
1	"	" "
1	"	" "
2	CH <sup>MANTA</sup> side	" T1 "
1	OW	between WP & Girders
1	CH	" " "
2	CH	T1 near Girders
2	CH	IT1 IT3 "



94 11 AUG 87  
TUESDAY

<u>Number seen</u>	<u>Site</u>	<u>area</u>
1	CH	T3 east of Gardens
1	CH	T1 " "
1	CH	T3 " "
1	CH	" "
2	OW	east Pen. region
1	CH	" "
1	OW	T1
3	CH	T1
1	CH <sup>near</sup> channel	T1
<hr/>		
57	TOTAL	

Level of Boat traffic previously kept  
such censuses from being done -  
Turtles were too weary.

- Tissue/bone analysis - include  
in proposal

Got Ham approval - spent  
evening in shack met Bob Artry w/ 5K?  
AND RON BOWLING (WB) KL7



"AS IN PREVIOUS STUDIES"  
 need:

- B/DG 120 + Port Control for storage
  - Radio - Red Hat +
  - CODA-A-GUN TELONICS, Mesa Arizona
  - NAOH Tank
  - Fuel Tank - East Point
  - Life - History of racemosa
  - Balloon / radio track -
- main value = locate sleeping.

Jenny  
 my file JA  
 food algae.

- Permygnet
- Ploty - monitor to see if algae changes - before/after sewer
  - Radio track to find resting habitat.

12 AUG 87  
 wed

UP - 9 AM - had gone to bed at 1 AM.

pedaled to EP/WF  
 Sewer still not fixed - leaking overflow near gardens.

1 PM departure in FWS 23 1/2' boat with Darby Iron & Randy to locate Caulerpa areas seen 2-3 years by her. She reports great decrease one year after originally finding it. Located area. LIVE UP PILING with left (W) end of said is. 500-800 yards to piling. Coral heads not very close to surface.



Pop. ~ 930

Maj. FRANK WILLIAMS  
KIRKLAND

12 AUGUST 87

Wed.

2:15pm

seen  
EAST of piling

I TF seen CH before  
finding *Caulerpa* heads.  
Doug and Randy snorkeled while boat  
drifted. Randy est. 2-3% coverage -  
tops and side.

Darby - "not much sand on bottom in  
lagoon - mostly coral coverage."

Motored through east extension  
of coral head zone - no  
other turtles seen.

Returned to port 3:30pm.  
- operated radio for about 1 hour.

5:30-6pm Golf cart w/ Doug to  
TACADS - climbed ~ 1/4 way up  
red and white stack.

Height = ?

Climber NAOH tanks - good  
site for observation - but need  
shade. No turtles seen.

Main feeding sightings has been  
slightly earlier.

Drove along red - hat black top.  
Watched double head, but no  
turtles seen.

Evening - talked to Maj. Dave Perrella  
and Engineer Frank Williams  
(Col) Jim Jepison tel. me previously.  
check daily log.



Paul Bergeron

97

(301) 671-2041  
Rick Rife's Assistant

Dr. A.E. NEVISSI  
UNIV. Wash.

Garage - \$100  
Plutonium - \$200

(206) 543-4259

MA Flight back to Hono canceled  
13 AUG. 87 Climbed w/ Doug - Safety belts  
Thursday 4-5 pm = Gray platform with  
stairs 55' high.

NAOH TANKS = 28' TANK (2)

Red/white "Smoke" stack = 95'  
(only went up a short distance - yesterday)

excellent observations for  
seeing turtles in the somewhat  
immediate Jacads area (WP).

Garbage reportedly dumped 2:30 pm at  
west boat wharf.

14 FRIDAY 87

Sewer leak still present -  
talked to plumber in mess hall.  
Lots of problems. Pump had to be  
fixed to.

Visited with Doug at JOC going  
over various paperwork - including  
plutonium analysis possibility.



AUG.

14 Friday 87

MAE flight finally arrived ~ 7:30 pm  
 Departed ~ 9:30 am.

Van at airport, Hickam, for me.  
 Drove Mr. Frank William, Army George  
 Abernathy + 2 civilians to  
 International terminal for 1 am  
 departure.

Jim picked me up at lab arrival  
 home at ~ 1:15 am.

2  
 Reports  
 sent



Rick Rife, Project Manager  
 Project EXECUTIVE OFFICE  
 PEO - PM, CML DEMIL  
 ABERDEEN PROVING GROUND, MD  
 21010-5401



AUG. 87  
SUN/TIDE

15	L 0322 0.1 L 1818 0.7 Sunrise 0702	H 1114 2.2 H 2114 1.4 Sunset 1943
16	L 0405 0.1 Sunrise 0702	H 1230 2.3 Sunset 1942
17	L 0455 0.1 L 2204 0.4 Sunrise 0702	H 1338 2.5 Sunset 1942
18	H 0030 1.1 H 1430 2.6 Sunrise 0702	L 0559 0.2 L 2222 0.4 Sunset 1941
19	H 1206 1.1 H 1515 2.7 Sunrise 0702	L 0704 0.1 L 2244 0.3 Sunset 1941
20	H 0304 1.2 H 1553 2.7 Sunrise 0703	L 0801 0.1 L 2306 0.3 Sunset 1940
21	H 0345 1.3 H 1626 2.8 Sunrise 0703	L 0846 0.1 L 2327 0.3 Sunset 1939
22	H 0422 1.4 H 1655 2.7 Sunrise 0703	L 0927 0.1 L 2348 0.2 Sunset 1939
23	H 0456 1.5 H 1723 2.7 Sunrise 0703	L 1009 0.1 L 0008 0.2 Sunset 1938
24	H 0529 1.6 H 1748 2.6 Sunrise 1703	L 1045 0.1 Sunset 1937
25	L 0025 0.2 L 1123 0.2 Sunset 0704	H 0603 1.7 H 1814 2.5 Sunset 1936
26	L 0044 0.2 L 1205 0.3 Sunrise 0704	H 0639 1.8 H 1839 2.3 Sunset 1936
27	L 0102 0.1 L 1251 0.4 Sunrise 0704	H 0722 1.9 H 1903 2.1 Sunset 1935
28	L 0125 0.1 L 1350 0.6 Sunrise 0704	H 0807 2.1 H 1931 1.9 Sunset 1934

(sic)

10	L 0052 0.0 L 1129 -0.1 Sunrise 0701	H 0615 1.5 H 1839 2.5 Sunset 1946
11	L 0123 0.0 L 1221 0.1 Sunrise 0701	H 0705 1.7 H 1915 2.6 Sunset 1945
12	L 0152 0.0 L 1320 0.3 Sunrise 0701	H 0801 1.8 H 1949 2.3 Sunset 1945
13	L 1221 0.0 L 1429 0.5 Sunrise 0701	H 0859 2.0 H 2021 2.0 Sunset 1944
14	L 0251 0.0 L 1557 0.7 Sunrise 0701	H 1004 2.1 H 2049 1.7 Sunset 1944

Census  
4-5:30pm

29	L 0147 0.1 L 1508 0.7 Sunrise 0704	H 0903 2.2 H 1957 1.7 Sunset 1933
30	L 0219 0.1 L 1711 0.7 Sunrise 0704	H 1011 2.3 H 2028 1.4 Sunset 1933
31	L 0301 0.1 Sunrise 0704	H 1128 2.4 Sunset 1932

(sic)



APPROX. DISTRIBUTION

OF TURTLES SIGHTED

DURING 90 MINUTE BOAT

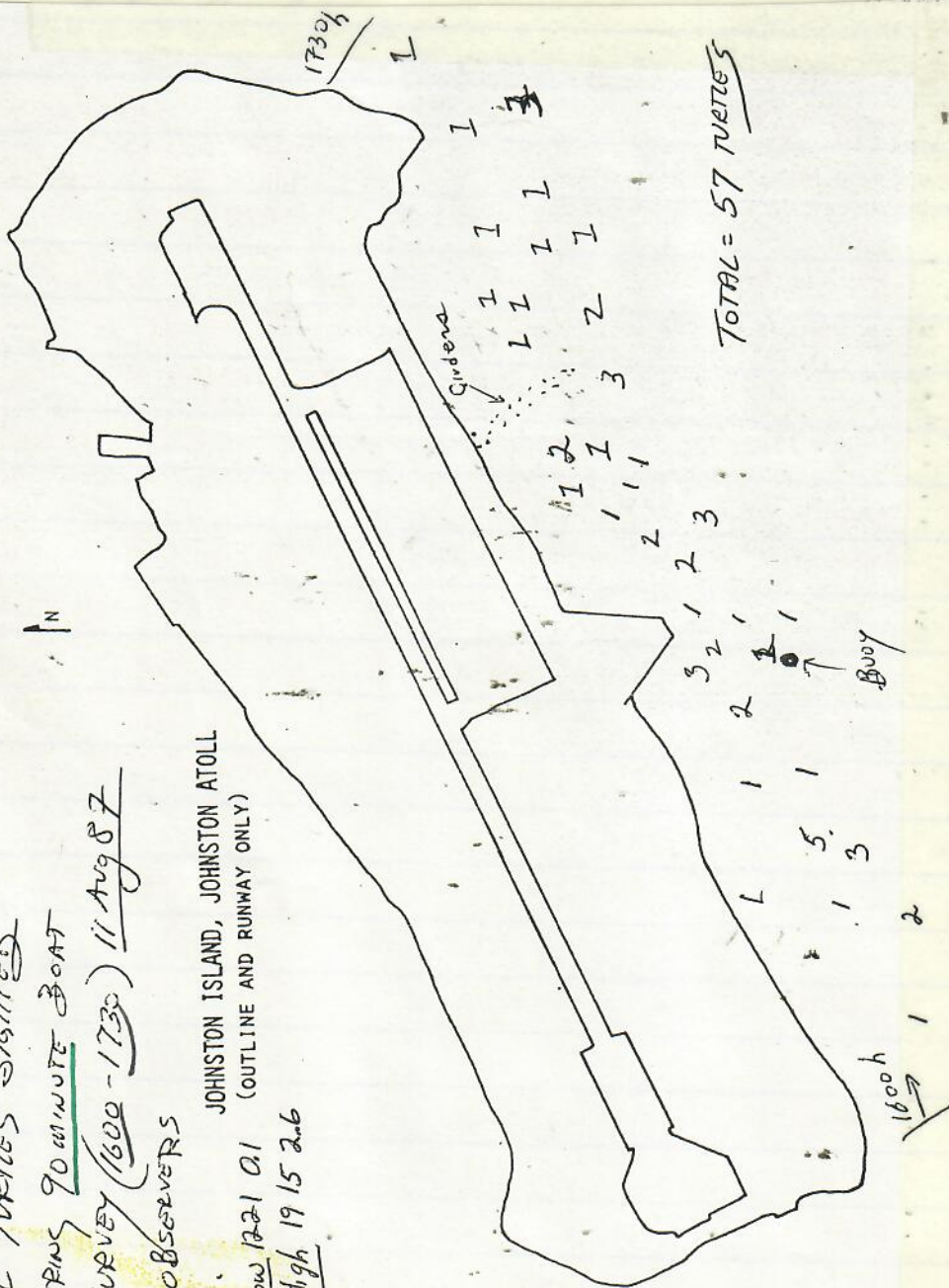
SURVEY (1600-1730) 11 AUG 87

2 OBSERVERS

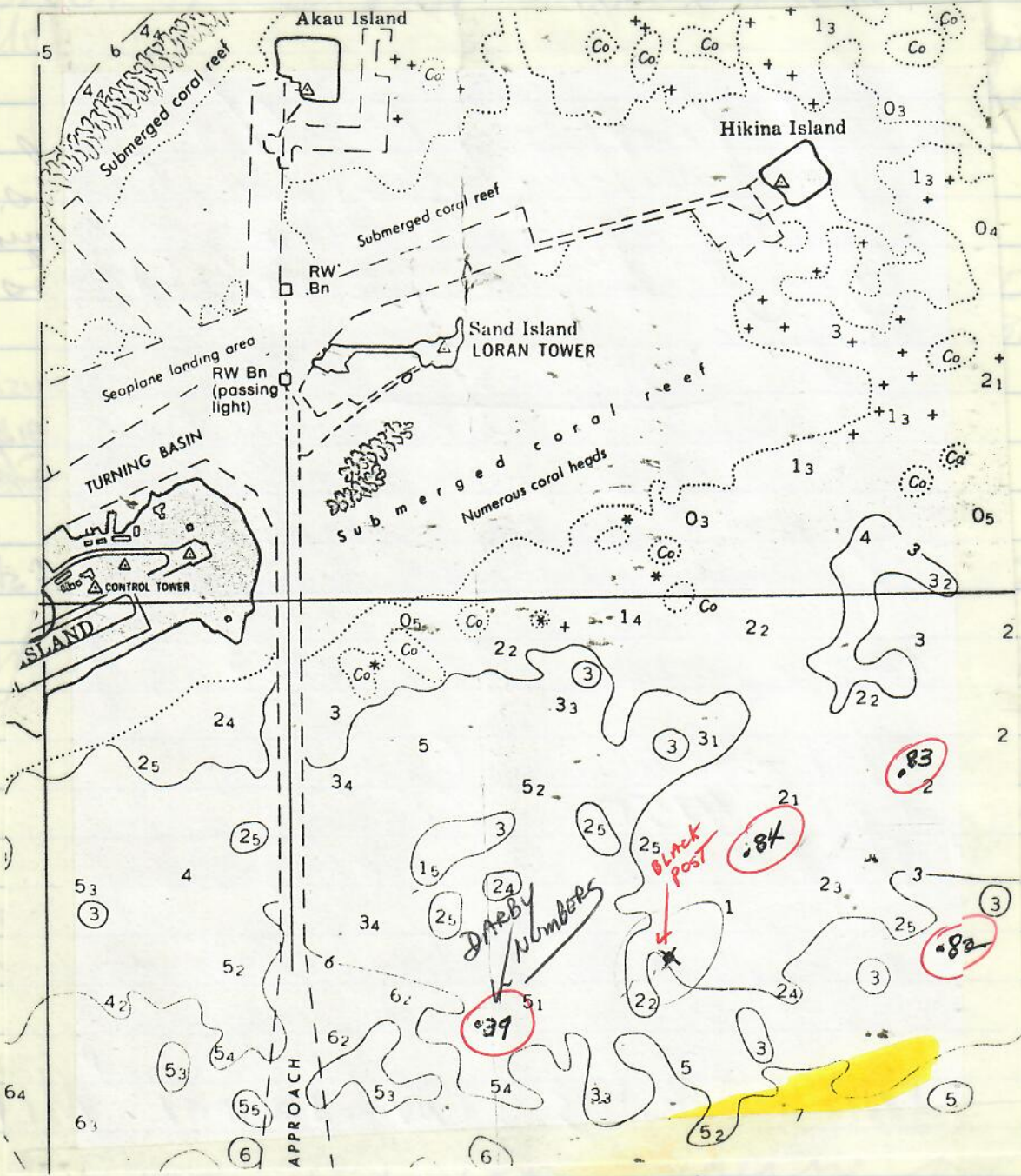
JOHNSTON ISLAND, JOHNSTON ATOLL  
(OUTLINE AND RUNWAY ONLY)

Low 12:21 A.M.

High 19:15 A.M.







ESTIMATED AREA Doug/Randy  
 Snokeled over Wed. 8/13  
 ~ 3% *Caulerpa rosea* coverage found.



JOE.

Col. B. HUNEKE

11/5/87 call from Doug Forsell -  
 He recently saw 2 turtles  
 foraging off South shore -- 10 minutes  
 or so then he departed. Photos  
 taken.

A IRA LEVINE - UH Biochemistry  
 recently visited JI. (DOUG PAID?)  
 to study algae off South Shore.  
 No Caulerpa seen.  
 Telecon w/Him 9-7-88. Probably too far off shore.

11/10 TAGS PACKED FOR 1987 JATA

3951 - 4050 (50)  
 4051 - 4150 (50)  
 4174 - 4250 (77)

177 TOTAL  
 + old piers for sealing <sup>NO.</sup> <5000 INCONELS

JNA JACADS ENVIRONMENTAL "MIPER"



23 Nov 87 Depart ~ 9:15 AM MAC -  
 MONDAY checked in at Hickam - 8 AM  
 Brenda Becker, Robin Westlake,  
 Thea J-K, Robert Forsyth

Arrive Johnston 11:15 AM -  
 Quarters in BLDG 16 Rm 410A  
 Tel. No. 3216. Rott 410B, 3219;  
 Brenda/Thea 409-A-B - phone  
 don't work.  
 Robin - tel. 2202 (out of order)

2 PM  
 Used ACE van to store gear at  
 Port Control, visit <sup>5-8 seen</sup> JCADS site <sup>from</sup> PLATFORMS  
 Drive around island (garbage <sup>LOW TIDE</sup>  
 dumped at 3 PM).  
 Met with Foisell & Maj. PROBST  
 (Army security) and Col. Bruce  
 Heitke for Protocol

Traded van at 4 PM for Hawaiian  
 Dredging pickup 017. Thea  
 and Brenda took swim test.

Dinner 4:15 - 7 PM. Theatre not  
 operating.



24 NOV. 87      SUNRISE - 0727 AM  
 TUESDAY      Sunset 643 PM

TIDES      H - 0800 AM 2.9'  
                  H - 801 PM 1.0'

L - 353 PM 0.1'

Breakfast at 6:30 AM -

Taped & launched BW

Blood tests - "update" only for  
 Robert and I.

Set up 100' painted net -  
 rebar anchors - 15' chain, 50'  
 nylon anchor line.

Drift set between #1 & #2  
 prominent heads, slightly to the  
 west of, immediate off JACADS  
 point. Net in H<sub>2</sub>O at 2:45 following  
 VHF Channel 16 from Doug.

Theresa and I watched from tower  
 for ~ 1 hour 8:45 - 9:35 AM  
 only (1) positively seen - MRM  
 heads, progressing toward us.

High  
 TIDE  
 2.9

10 minutes at EAST PENINSULA - NO RAYS,  
 Turtles -  
 nothing seen.



11-24-87

TUES,

1:30-1:40 pm

5-6 turtles  
seen from tower.Turtle  
caught  
4:45 pmNet "pinned" at time turtle  
was taken out ~ 5:15 pm.

Brought turtle to raft tied to  
boat house pier - loaded to in  
truck and worked up by  
port control storage room site  
on the back of pick-up. Excellent  
location.

DINNER 6:30-7:30 pm

Needs -

- COUNT LIGHTS ON JACADS
- Blast steel pilings
- PHOTOS OF TOWER - JACADS FROM H<sub>2</sub>O



TUESDAY  
24 NOVEMBER 874:25 pm  
(out of net  
~ 05 pm)100' BLUE NET  
BETWEEN #1 & #2 Head set  
at 2:45 pm OFF JACARDS

Processed at 1945

TAGS S - 80.5 X 44.3

NOTCH - 19.5

4174-RFL

C - 86.0 X 80.0

4175-LFL

PL - 64.4 orangish color.

4176-LFL

HEAD - 11.5

3<sup>rd</sup> & 4<sup>th</sup>

TAIL - 18.0

RFF - 12.8

4177-RF

3<sup>rd</sup> & 4<sup>th</sup>STOMACH - sample taken  
GARDEN HOSE

4178-LH

Blood - tried, no sample taken

- PAM LUBRICANT -

FECES - tried several times, clamped very tight  
no sample taken (obtained)→ BONE - sample taken Left 10<sup>th</sup>, Right 10<sup>th</sup>  
Right 9<sup>th</sup>, Left 9<sup>th</sup> (4 pieces TOTAL)Net burn on left front flipper - rubbed off superficial  
scales

GIRDER BEACH

Release 9 pm

PAINT

Yellow  
Blue

11

EACH SIDE

PHOTOS ON THE BEACH.  
Resting by one of many mounds  
OF CAULORPA  
Buried in the beach.Polysiphonia  
tsubanaRed algae, <sup>present</sup> underside of carapace

#4174 Stomach sample, 11-30-87

Caulerpa racemosa  
Schizothrix calcicola100%  
Trace



NETTING DAY 2

2805 - HAM  
STACK **A07**

25 NOV, 87  
WEDNESDAY

TIDES = L 1235AM 0.0  
H - 853AM 2.8  
L - 450PM 0.1  
H - 9:35PM 1.0

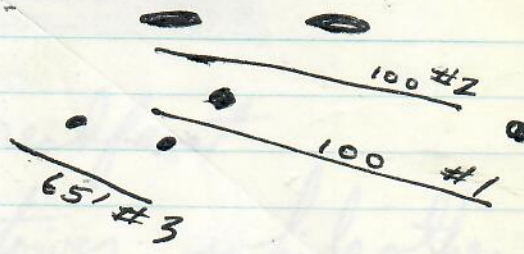
805-835AM GHB & BB  
windy/choppy - high tide

3-4 seen total. The PINNED-UP NET  
Looks GOOD FROM TOWER.

11:30AM TWO nets set up & put out

"NOT  
TANGLING!"

NET #2 - 100' #1 UNPINNED  
#3 65'  
RIGHT AFTER SETTING, SAW  
ONE TURTLE - PANIC BRIEFLY IN #1



1:35 PM - GHB & RF  
1:55 PM

"NOT  
TANGLING!"

7 seen  
at 1:50 PM - floats down in middle  
of #2 - shortly thereafter a turtle  
swam out.

307-325 PM

RF alone

8 total sighted -  
1 came up in front of  
net #1, dove and later  
beyond right end.

4:37 - 452 PM  
RW & GHB

10-13 Turtles  
seen.



Thus far, very milky H<sub>2</sub>O.

25 NOV 87

Wed.

~ 5:35 pm departed harbor -

GHB, RF &amp; TJ.

Pinned ALL

These nets and back to harbor  
by 6:35<sup>sun very low</sup> pm. only ~ 25 pins

(needed for 100 nets).

RW & BB in fower report only

seeing 3 turtles - 1805-1816 (605 to 616)

~10 minutes per net to pin - working fast.



NETTING DAY #3

109

SUNRISE - 0728 AM

SUNSET - 6 43 pm

26 NOV. 87

THURSDAY

(THANKSGIVING DAY)

WIND - SEASTATE CONDITIONS MUCH  
REDUCED FROM THE PAST 2 DAYS.

L 0134 :2

H 0951 2.7

L 538 pm 0.0

H. 1126 pm 1.2

ATTENTION FISHERMEN!!! The East and West peninsulas are closed to shark fishing and chumming until 7 December. There will be people working in the waters off this area and we do not wish to attract sharks.

UP 6:15<sup>Am</sup> as usual - Breakfast

8:15<sup>Am</sup> GHB & RW to tower while other 3 assembled lost 3-65' red-float nets

Turtle head seen by #1 coral head at 8:28 AM. Glare on water in vicinity of heads due to morning sun. 8:45 noted bright green assemblage (phytoplankton) in east corner of Jacobs. Gone (dissipated) later in the day.

Total seen = (1) - Pinned-up nets look fine.

10 AM GHB, TJ & RF set out



26 NOV. 87  
THURSDAY

65 65 65  
nets #4, 5 & 6 mostly to the east of JAADS east & equal.

Returned to port at 11:15 am. 3 TURTLES seen from tower by BB & RW while we were out.

→ Need - Ask Chris if algae drifts on South Sand beach by girders are normal.

→ 9-17-85 Blood sent to Broddon

→ NO. & LIGHTS ON JAADS - VISIT AT NIGHT 11/27

1:30pm - 1:45pm - GAB & RW

NO TANGLING BECAUSE THEY'RE NOT PANICING!

#6

1:33pm Turtle swimming right at net back and forth eventually passed by and not caught - no fame.  
#5 #13  
1:44pm Turtle swam at end buoy - passed by #4 #6

(8) Total Seen

3:04pm - 3:28pm  
BB & TJ

(6) Total

6 Total seen

RAIN Squalls Depart port ~ 5:15 pm after Thanksgiving Day dinner 5:30pm  
GHB RW & RF. Return 6:45  
Pinned all 6 nets - pulled 2 snags on the bottom - free.



Backnote Seal seen at west wharf  
the day or so before our arrival.

50 cal machine gun firing area.

→ Turtle came from across channel by shark  
chute (Cris 1985)??

NETTING DAY #4 7:55 AM TO TOWER

27 NOV. 87 RF BB TJ looking to the

FRIDAY West RW/GB TO EAST +

PROMINENT HEADS.

Choppy/windy

Sewer pumped every 6-10 minutes  
observed for 30 minutes, until 8:25 AM

3 Total Seen



- Consider - "overflow" <sup>sewer</sup> pipes seep out  
low levels of sewage fertilizer.

850 AM RF, BB, TJ Depart port to  
unpin nets

902 AM GB/RW to tower - while nets  
unpinned

902 AM Sewer pumped

918

931 " photos

947 "

1001 "

4 Total Seen

Unpinning & untagging completed Wilbans



27 NOV 87

FRIDAY

GB to tower at 12:10 pm - alone

(4) total seen (12:24 - sewer pumped)  
12:25 pm

Not seeing turtles associated with coral heads hardly at all, like previous trips.

Switched to other feeding behavior?

2:10 - 2:40 RF &amp; BB

RF <sup>looking</sup> east 5

BB west 4

(9) total

→ 2:45 turtle seen caught net #4

GB, RW BB depart Port 3:00 pm

not in net when arrived.

Proceeded around west wharf -  
not turtles seen double head on  
along Red Hat. Back 3:30 pm

4:37 - 4:52 pm

RF BB

↓  
3 west ↓  
3 East

(6) total

Depart 5:15

5:27 - 5:54

nets  
net #2GB TJ RW pinned  
Had planned to leave  
100' in overnight. However,



FRIDAY

11/27/87 Robert spotted a MANTA (first seen this trip) off net #3 heading west.

RF & BB saw 4 turtles total 2 west 2 east.

Returned to port ~ 6:15 pm.  
Dinner over at 7 pm. Waikiki Club burgers, etc<sup>5010</sup> until 9 pm.

8 pm GB-RF-BB visited JACADS  
Double fence security lights on poles around JACADS - not as yet. But apparent are along Redhat new fence.  
Lights on plant illuminate to some extent the waters near tower. floats from nets reflected light and could be seen.  
Lights will attract MANTAS at night??



HIGH WIND (>21 KNTS) RED FLAG UP

28 NOVEMBER 87 TURBULENT CHOP & SWELL (S)  
AT JACADS - WATER OVER  
SATURDAY SEAWALL. ∴ NETS NOT DOWN TODAY

SITE	OBSERVERS	TOTAL SEEN
8:02-8:33 AM JACADS TOWER	5 of us	(4) (all to the EAST) None by head

Sewer seen pumping 8:02, 8:15, 8:33  
Turtle near wall made quick dive  
after surfacing - surely saw us.

8:42-8:57 west wharf 4 (2)  
Beige = 10 counts/min.

9:25-9:40 "overflow" near Girders 5 (1)  
fresh, thick algal mats  
washing in. Heavy Glare  
to the east.

9:45-10 AM Near Terminal 5 (1)  
Can see good out to girders

- needs
- Dates lights at Red Hat went on?
- Date Sec. lights - JACADS will go on?
- Height of tower

10:05-10:20 EP 5 (0)  
staying people on  
all three sides



28 NOV 87 (nets not down)

115

SAT.

Total

1153-1209 pm Redhat 5  
near doublehead

(6)

(3 TO EAST 3 → 1 near TOWARD head)

Mean submergence times = 9'18"  
3'56"

Consider for standard observations:

- Time of day
- Sunglasses
- elevation
- Seastate
- Glare factor
- Sunny vs Shady
- Turbidity

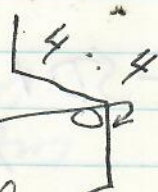
2:42 pm - Tower 5

(10)

313

JACKS

Sewer - 2:43, 257, 306 pm



noted Turb float by seawall  
none by heads  
Head/felt exposures while watching.

- Date started?
- No. done?
- effect feeding behavior?
- Attract sharks?

Milky white water in east corner of WP - all around nets.



116

28 NOV 87 (NETS NOT DOWN)

Saturday

Down

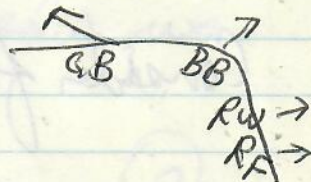
Jan Daniels - 3790 TOUR

329pm - West Wharf 5  
344 + corner

(0)

Big surf noted on out north reef. Strong current in West Channel area.

"GB Brine" barrels



4:00-4:30pm ~~Red hat~~ double-head 5

(13)

2 seen associated w/ double head; 1 by another (submerged) head

3-4 of seen look and down times recorded = 5'52"

446-501

Terminal

2 RW GB RF

(1) Big

445-500 EP

2 BB TU

(0)



29 NOV. 87 NETTING DAY #5

117

SUNDAY

Wind seems less + red flag not  
up - slight different direction (more north)

Big rainy squalls to the south.

(Swell from south apparently  
wrapping around from heavy wath surf  
on reef.

811-826 AM JACADS TOWER <sup>observers</sup> 5 1 Total  
no sewer pump. near net #5

- reef date tower moved here ("Thursday"  
before our arrival.

855 - RF, RW, BB unpinning nets.  
1055 chaffy + swell - - some (near seasick).  
Sewer pumped 906 AM  
949 AM 3 Total  
milky color water

4	blasts Sand IS.	10 AM
3	"	1220 PM
2	"	1250
1	"	110
	+ ?	

(continued JATA III Book)



NOV. 87

119

NETTING DAY #

MON 23

H 0702 3.0 L 1451 0.2  
H 1849 1.0 L 2346 -0.2  
Sunrise 0726 Sunset 1843

① TUES 24

H 0800 2.9 L 1553 0.1  
H 2001 1.0  
Sunrise 0727 Sunset 1843

② WED 25

L 0035 0.0 H 0853 2.8  
L 1649 0.1 H 2135 1.0  
Sunrise 0727 Sunset 1843

③ THURS. 26

L 0134 0.2 H 0951 2.7  
L 1738 0.0 H 2326 1.2  
Sunrise 0728 Sunset 1843

④ FRI 27

L 0300 0.4 H 1047 2.5  
L 1821 0.0  
Sunrise 0729 Sunset 1843

NETS UP SAT. 28  
HIGH WIND

H 0049 1.5 L 0457 0.6  
H 1156 2.2 L 1855 -0.1  
Sunrise 0728 Sunset 1843

SUN 29

H 0151 1.8 L 0647 0.6  
H 1238 2.0 L 1927 -0.1  
Sunrise 0730 Sunset 1843

MON 30

H 0240 2.1 L 0822 0.6  
H 1337 1.8 L 1959 -0.2  
Sunrise 0730 Sunset 1843

DECEMBER 1987  
TIDE AND SUN SCHEDULE

TUES 1

H 0320 2.4 L 0938 0.5  
H 1427 1.6 L 2028 -0.2  
Sunrise 0731 Sunset 1843

WED 2 NETS OVERNIGHT

H 0357 2.6 L 1043 0.4  
H 1511 1.4 L 2055 -0.2  
Sunrise 0732 Sunset 1843

THURS 3 7 NETS OVERNIGHT

H 0436 2.8 L 1139 0.3  
H 1557 1.2 L 2122 -0.2  
Sunrise 0732 Sunset 1844

FRIDAY 4

H 0547 2.9 L 1228 0.2  
H 1714 1.1 L 2222 -0.2  
Sunrise 0733 Sunset 1844

SAT 5

H 0622 2.9 L 1358 0.2  
H 1753 1.0 L 2254 -0.1  
Sunrise 0734 Sunset 1844

SUN 6

H 0659 2.8 L 1443 0.2  
H 1838 1.0 L 2327 -0.1  
Sunrise 0735 Sunset 1845

MON 7

H 0736 2.7 L 1523 0.2  
H 1927 1.0  
Sunrise 0735 Sunset 1845

FWS BOAT SURVEY 1555-1750 h





### WATERPROOF SUNSCREENS AVAILABLE IN HAWAII

Table 1

Aloe Gater; SPF 25  
 Aloe Up; SPF 4, 8, 20, 25  
 Banana Boat; SPF 8, 15, 23  
 Bull Frog; SPF 18  
 Cancer Garde; SPF 33  
 Coppertone  
   (regular); SPF 4, 6, 8, 15, 25  
 Coppertone Waterbabies; SPF 15  
 Formula 405; SPF 15  
 Hawaiian Tan Maker; SPF 8, 15  
 Hawaiian Tropic; SPF 8, 10, 15, 22  
 Little Gator; SPF 25  
 Long's Brand; SPF 8, 15  
 Native Tan; SPF 10, 15, 22  
 Physician's Formula; SPF 15  
 PreSun; SPF 4, 8, 15, 29  
 Shark Skin; SPF 18  
 Solar Edge; SPF 18  
 Subtropic; SPF 8, 15  
 Sundown (J&J); SPF 8, 15, 20, 24  
 Supershade; SPF 15, 25  
 Total Eclipse; SPF 15, 20 (spray)  
 Turtle Guard; SPF 27  
 Zinka (Zinc Oxide); A total sun block

### SUNSCREEN PRODUCTS APPROVED BY THE SKIN CANCER FOUNDATION\*

Table 2

Ban de Soleil; SPF 15, 23, 30  
 PreSun; SPF 15, 29  
 Sea & Ski, Blockout; SPF 15, 20, 25  
 Skin Cancer Garde; SPF 33  
 Total Eclipse Spray; SPF 20

\*Products evaluated and Sun  
 Protective Factors confirmed by the  
 National Skin Cancer Foundation —  
 New York City.

NON  
PABA



Phil Roseberry - 2962 (Hendricks 944-1143) Recording  
 449-2807  
 6975  
 AIR NIC 800-421-5390  
 GEMAN (ACE) Mary Ertel/Gerhard 438-2264  
 J.A. 432-0521

John Henderson home 377-5351  
 PHOTO LOG - P. 118  
 TAGGING SUMMARY - P. 112  
 H&N Security - 235B "Alamo"  
 Redhat Guard Shack - 695D-3022  
 471 7411 -

J.A. APO San Francisco - 96305

Dulley - home 955-6987  
 Heacock - 822-3834

HOUSTON TIDE COLLECTION (P. 328)  
 (16°45' 169°31') ON HOAUCULU (SEE MAP, ESTIMATE P. 98)

HIGH WATER		LOW WATER	
hours	minutes	hours	minutes
+1	30	+1	26

feet -D.1.

NETTING TIMES & LOCATION . . . P108  
 BY-CATCH SUMMARY - P. 110  
 SCUBA DIVE SUMMARY - P. 104  
 "Questions/Needs" - P. 7; P. 25; P. 26

MET  
 LEN  
 millim  
 centim  
 decim  
 meter  
 decar  
 hecto  
 kilom  
 myriam

AREA

61.02 cubic inches

liter

TELEPHONE  
 Lt. Col. Moore 3005/2359  
 " " 366y 3035  
 Major Mitchell 2359  
 Major Jim Aikens - 2112  
 CWO G.G. Stillman 2305/3366

APO SF 96305 - P. Rapiere 2081  
 C. Balaban Traffic/Warehousing 2266/2268  
 Security - Capt. G.H. Brown 3020  
 Kitty Aiken 948-2222

Ms. Schleich - B.P. Museum 817-3511

Virginia Thomas - M/S (N/C) Randi

TON STAGER - (305) 887-7761

Dennis T. Russell  
 School of Natural & Mathematical Science  
 Seattle Pacific University  
 Seattle, WA 98119

P.G. Ackman (802) 429-8300  
 P.O. Box 1000  
 HA LI FAX NS 835 2X4

CODE



