

DAILY LOG

Keoki Balazs

Honu Scientist



Very kind of you to offer to take me up to the North Shore; I'd love to go but on one condition: that you wait until you have to go up there for a another reason and don't make a special trip.

Aloha

6 an 8 ny.

(808) 395-6409
GEORGE BALAZS

100 Sheets • 200 Pages • Wide Ruled
7 1/2 in. • 24.7 x 19.0 cm

808-286-2899



3 of 3

CHANG CHING FANG



THE BEST OF FANG 2002 COLLECTION

張清芳的



George & Linda Balazs
992 Awaawaanooa Pl Unit A
Honolulu, HI 96825

• Karen Rosa
Fish and Wildlife Biologist
Field Response Coordinator
Pacific Islands Fish and Wildlife
P.O. Box 50088
Honolulu, HI 96850
ph: (808) 792-9400
fax: (808) 792-9581

As is so often the case in nature prevailling physical con-
ditions, though giving character to place, do not account for cri-
tical characteristics of that place. Environmental extremes, brief
in time but intensive in effect, are the true determinants of such
physical landscapes.

ROBERT STANDEN JAN. 1969 MS THESIS

150 Ask Rosty

Wec student Algor

JAN 11, 2008 Friday PARC

"Palmyra Atoll Research Consortium"
TALK by Benigno Cleonora & Kate (Kevin) Frey
NARO-MACIEL STERLING MACFADDEN

Movement on land around islands - issue
6 kayak surveys (1-man kayak) 180 sightings
2nd heads

Johnaugutan

July - Nov.

March - Nov

Maritime
#25,200

History - Discovery who written? Google it

Acoustic Arrays
Hoping to do in August.

B. Allard Camera?

AMNH Sackler Institute for Comparative Genomics
+ web site

Approach for critical thinking/active learning

- DAY 1 TUESDAY JANUARY 8 = PP presentations/discussions / A2 sat tags
- DAY 2 1/9 WED = TW necropsies, biopsy bleeding handling / KRF
- DAY 3 1/10 Thurs = Kiftolo HPA netting STOMACH FLUSH scoop
- DAY 4 1/11 Friday = Palmyra PP DISCUSS / A2 Attach epoxy polyester
- DAY 5 1/12 Saturday = Study site visits WAWAWAW / MW Perry
- DAY 6 1/13 SUNDAY DAY OFF

obs
TRAIN
subset
obs
1-10-08
Above
Day 7
Day 8
1/16/08
Twe
Pho
Jan 20
Tuesda
1/2

LL observer
TRAIN eq
Subset of observers

ST24 Doubles Intercycles
52695 8-72 off
52697 36-8-36 off on off

Friday
10
1

GET A 52694 36-8-36
KIT B H 52693 8-72
KIT C HEGOS 52696 36-8-36
29066 8-72 set 1
KIT D 52698 36-8-36 set 2
19595 8-72 set 1

Above kits with epoxy Given to observers

Day 7 1/14/08 PALMYRA 411 KAWAINUI N=8 net
Day 8 1/15 HAWAIIAN A - Removed SONIC TDR from Nugget

1/16/08 Telecon Linden JOESTING 55 S. Judd
Kawela Bay gent #1810 HONOLULU 96817

Property Association W/F stickers STRAND instructions
JAN 22, 2008 Score Meeting - Bud GALAPAGES
Tuesday Shanks & Mont Seals: A Conservation Council

1/28/08 Noumea Fedoff #8597 -4099-570
2 - ST24 40469 (#571484) 6/24
1 - Silicone Elastomer
RICHARD FARMAN 40477 (#59657)

152

Yucca Valley w/LIN

- GRANT Rock
- PS TR 2m
- JTN Park
- Keiso

Sunday

JAN 27 (9:30pm) ^{depart}

Sunday

Feb 3 Sunday

fence gate [east & west] sides installed.
Front

CAVIAKEA SAT TAG & TDR Deployments

Rice & BAU25 Feb 4 Monday (LI exam)

Feb 5 Tuesday ^{Rice BAU25} tags on L1 & L4 (changed TDR)

Feb 6 wed / GB only - 6/24 6/24

Feb 7 Thurs GB only -

2/8/08 KIT E 40579 8/72
Friday 23542 36/8/36

KIT F 22535 8/72
23002 36/8/36

to Kevin's observer program

10-14 FEBRUARY 2008 - KAPOHO

Sunday Thurs NS. Jim / 8th graders N=39
HPA 6-7

15 February 2008 Friday L2 cracked back

February 18-25, 2008 Sunday Sunday
ST 24 2/2 AT KEISO

TAIWAN - Turtle Sacrifice V

1-800
1 241 6522 2921M / CHANG - TAIWAN
1/27/08 ARGOS 41789
Telomus 564375

Febex # 8597 4099-5556

2/4/08 "Marie Burns" - court notes at
2/5 Hawaiian - As per Steve Cotton DO CARE, HAWAII

TUESDAY
2/26/08 / IPM

- MTRP part of PSD staff meeting
- Jeff ~~POD~~ MTRP visitor from ELL (Gorden Bolten/Bjornsdal)
- TWO ^{EMPLOYEES} occupying same ~~TRASH~~

NEXT GENERATIONS

"FACTS are seldom complete - There are
information gaps - so to fill in humans
use instinct and intuition"

(sent)

Telecom ~~quest~~ writes
3/15/08 ASICAL SHER 228-8607
2 wks ago SAW MATING Attempt - close to shore for blue water
53667 KAM Hwy HAWAII HI 96717

(156)

PUNALOU KAU

brochure sent

From
Janette Howard 730 35108
Danielle Flocke
Hilo Hawaiian

officer
SHIBUYA
Hilo police

RONALD JANKI'=~~HER~~ BOSS

Truck Blue Toyota pickup
HLL 797 Metal Rack
4 young boys

took route along
with pet when
they picked it up.

Cross netting pavilion
OLE
541-2727
see Tom Friel
808
330 3768

George,

Well what can I say? Thank you doesn't seem to be enough for all that you've done for me. I could not have done it without your support. It has been great working here and very hard for me to leave. You have helped me achieve my goals and grow through the years. The money was more than enough and I really appreciate it. Having you there meant a lot and I'm going to miss you. I'll be in touch and if you ever make it to San Diego, you had better give me a call! Take care!

Love,
Shardell

Date: Wed, 09 Jan 2008 16:32:24 -0500 (EST)
 From: Andres Garza <andres.garza@mrغامericas.com>
 To: George H. Balazs <gbalazs@honlab.nmfs.hawaii.edu>
 Subject: Re: Response from George Re: Turtle Kit supplies

Ok George, I apologize about getting this information to you so late. Here is a complete inventory of what we have both at sea and on land for the turtle supplies.

NO. OBSERVERS AT ONE TIME

- 2 Corers: ①
 - 1 Turtle Nets: 106
 - 1 DNA Poles with Core tip: ② 537
 - 1 Tag Applicators: ③ 54
 - 1 Forceps: ④ 71
 - 10 Whirlpicks: ⑤ 83
 - 4 Biopsy Punch: ⑥ 1018
 - 14 Alcohol Prep Swabs: ⑦ 351
 - 2 Vals of NAACL: ⑧ 2394
 - 25 Metal Turtle Tags: ⑨ 211
- Handwritten notes and corrections:
- 530
 - 542
 - 713
 - 834
 - 10185
 - 18758
 - 10177
 - 759
 - 1058

Keep in mind that we send out 2 cores, 1 net, 1 DNA pole, 1 Tag Applicator, 1 forcep, 10 whirlpicks, 4 Biopsy punch, 14 Alcohol prep swabs, 2 vals of NAACL and 25 metal turtle tags with every observer. I hope this information will help with our future communication between our company and your operation. If you have any other questions please feel free to call me or e-mail me. Aloha and have a great day. Andres!



Rotnwayne Scott
 Desert Home Park
 need 2004 Yucca
 2005 RATES
 2006 of The Monthly

- DRIVAVen TO Jackblack
- DOOYOP
- DIAL TONE phone

TO LA - Hawaiian Air
 YUCCA VALLEY
 DEC 3-9, 2007

PEOPLE



10-18-07 COLUMBIA PICTURES
Burt Lancaster passionately kisses Deborah Kerr in a beach scene — filmed near the Halona blowhole — in the 1953 movie "From Here To Eternity."

H5B

Kerr's kiss remembered for 'Eternity'

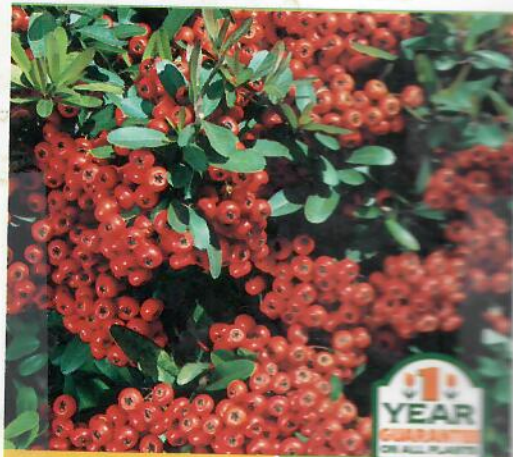
LONDON >> Deborah Kerr, who shared one of Hollywood's most famous kisses while portraying an Army officer's unhappy wife in "From Here to Eternity" and danced with the Siamese monarch in "The King and I," has died. She was 86.

Kerr, who suffered from Parkinson's disease, died Tuesday in Suffolk in eastern England, her agent, Anne Hutton, said today.

The Academy of Motion Picture Arts and Sciences nominated Kerr six times for best actress, but never gave her an Academy Award until it presented an honorary Oscar in 1994 for her distinguished career as an "artist of impeccable grace and beauty, a dedicated actress whose motion picture career has always stood for perfection, discipline and elegance."

ASSOCIATED PRESS / MORE PEOPLE, D6

GRABER PYRACANTHA



SUN

PYRACANTHA FORTUNEANA 'GRABERI'

- White blooms in spring
- Flores blancas en la primavera
- Espaliered on wall or fence
- Use una espaliera en la pared o la cerca



\$

NE MEX. Linn. Forest, CA 95000
 SKU 80199 2004-07-11



Brian Joy
 PRESIDENT / OWNER

1050 Kikowaena Place
 Honolulu, HI 96819
 Ph: (808) 834-ROCK (7625)
 Fax: (808) 836-8682
 E-mail: bigrock@apacs.com
 www.bigrockhawaii.com

160

----- Forwarded message -----

Date: Sat, 6 Oct 2007 21:08:53 -1000

From: Robert Morris <morrisr005@hawaii.rr.com>

To: George H. Balazs <gbalazs@honlab.nmfs.hawaii.edu>

the treatment I am on is Valacyclovir (Valtrex) 1gm 3X daily

Is there any treatment?

The severity and duration of an attack of shingles can be significantly reduced by immediate treatment with antiviral drugs, which include acyclovir, valacyclovir, or famcyclovir. Antiviral drugs may also help stave off the painful after-effects of shingles. Other treatments for postherpetic neuralgia include steroids, antidepressants, anticonvulsants, and topical agents.

In 2006, the Food and Drug Administration approved a VZV vaccine (Zostavax) for use in people 60 and older who have had chickenpox. When the vaccine becomes more widely available, many older adults will for the first time have a means of preventing shingles. Researchers found that giving older adults the vaccine reduced the expected number of later cases of shingles by half. And in people who still got the disease despite immunization, the severity and complications of shingles were dramatically reduced. The shingles vaccine is only a preventive therapy and is not a treatment for those who already have shingles or postherpetic neuralgia

Stanley de Silva,
Apt.#207, 480 McLevin Ave.,
Scarborough, Ontario, M1B 5N9
Canada.

Date: Sat, 29 Dec 2007 10:11:55 -0500 (EST)
From: George de Silva <stanleydesilva@rogers.com>

Balloons

Shawn Murakawa wrote:

- > Only two with "balloon" in the comments.
- >
- > 1) 11-1-89/Turtle Bay Hilton, Oahu/SCL=38.3cm - Found dead and decomposing washed ashore. Very small with scutes peeling off. Scutes peeling. Cut out entire G.I.T. appears to have: orange *balloon*, 1cm plastic tube, black plastic, and fishing line. Towards stomach there's algae (Pterocladia, Amania). Samples: stomach contents, SB in Bridget's preserve bottle, orange *balloon*, 1cm plastic tube, black plastic, and fishing line. Stomach contents: 50% Amania, 50% Galaxaura, 2% Hypnea, 1% Pterocladia, trace Centroceros, and one plastic artificial Christmas tree needle.
- >
- > 2) 2-7-04/Waianae Boat Harbor, Oahu/SCL=38.0cm/Wt=15.4# - Found dead by a dolphin tour boat and taken to Waianae Boat Harbor. Carcass placed into a bag and taken to Ice House for storage. Picked up by SSG on 2-8-04. Injury to RFF/RHF from possible entanglement. Prefrontals sloughing. Bridge between nostrils missing. Used for LL observer training on skin biopsies and metal tag application on 2-17-04. Transferred to Halawa on 2-24-04. Necropsy performed on 2-26-04. Mild emaciation. Plastron very clean and yellowish-whitish in color. Gash on 2nd R. lateral, 2cm long. Hole in R. posterior head due to decomposition. Cut by tail, 1cm long. No PPS. Axial: 13.2cm, lateral: 13.4cm. Fair body condition. Mild decomposition. Lots of body fat. Internal organs very red. Large intestines contain polypropylene line, plastic, fishing line, and *balloon*. G.I.T. 15% full. Samples: humeri, metal tag A132 from LL observer training, esophagus contents, intestinal contents, skin in salt packet for DNA, and digital photos (dorsal, ventral, internal, and intestinal contents) saved.

The first listed here by Shawn is included in my list- cause = plastics in intestines.
The second (2/7/04) was given a cause = line ingestion. The balloon looks to be rubber from the picture.

My list (11 cases) is taken from Cause- 1982-January 2007 (4705 cases). Two were from 1984, 3 from 1986, 1 from 1987, 1 from 1989, 1 from 1991, 1 from 1993, 1 from 1999, 1 from 2006, (and 1 from 2004- Shawn's case below).

Total cases involving balloons = 2 (0.04% of strandings). Total cases involving plastics = 11 (0.25% of strandings). I would have to do a bit more work to see the % of turtles necropsied that had plastics/balloons.

162

Bergsma

NOTE CARDS



TRUE ART IS BUT AN EXPRESSION
OF OUR LOVE OF NATURE..

HENRY DAVID THOREAU

Our day in Kauai was bittersweet but good. We saw monk seals and whales. We saw whales in Oahu and Kona. We always had a soft spot for them, too.

In Oahu we visited Kailua Bay + Hanalei Bay and I even got to see the little greens at Kewalo. What a great trip! Thank you again, George. Stacy was a great tour guide. Please let me know if

I can ever return the favor.

www.bergsma.com
Bergsma Gallery, Bellingham, WA



Notecard Package #243552
Printed in Korea, Assembled in China

Alena
Dana

Mellie Johnston
1988 PAHOETHOE
ST 96756
KAWAIA

(162)

August 07

DEAN BAGLEY

Dear George,

Thank you for giving me such a wonderful time while I was in Hawaii. As I told you before, not many people can be the perfect host when they're not even there, but you did it.

Stacy showed me so many of your wonderful study sites. We saw green turtles everywhere! They swam right next to me and hauled out to bask right in front of me. Virtually everywhere we went! It was wonderful!! and I wish our Florida turtles would act like that. They are so timid that you're lucky to even see them swimming away. I was so excited when two of your satellite tagged adults hauled out at Lanikahe. What fun to see them both!

Our trip to the Kona coast was spectacular. The scenery was so

breath taking, and the turtles made us feel welcome everywhere we went. We started out at Kaloko where the turtles were in such shallow water that we could see their sonic tags and before we left, we'd seen six of them basking on the beach. Kiholo was amazing - they were all over the shore and the rock isleland just awesome. I walked out to one of the islands where Stacy could take my picture surrounded by basking turtles - they never even knew I was there. Then she took me to Puukoua O Hanalei to watch through the park and swim that beautiful reef. The colors were so vibrant in the fish. And of course the turtles came to swim and bask there, too. They welcomed me everywhere we went. We stopped at Kahaluu Beach Park, and despite all the people there, the turtles were right in the middle of them, feeding at the rock walls. Thank you, George, for such a fabulous couple of days on Hawaii. It was amazing.

-OVER-

Bill Johnston
DARR P. HOEHOE

Managing a high-maintenance boss

CHA 8/6/07

They get more done in a day than most people accomplish in a year. They're brimming with ideas, charismatic, relentless in achieving goals, focused on the task and direct about how they want it done. They are your high-maintenance folks.

Companies need them because the words "can't do" aren't part of their vocabulary, says Katherine Graham Levis, author of "High-Maintenance Employees."

The problem is that people who work for them may, well, find them a bit challenging.



AT WORK

By Andrea Kay

After all, these high-maintenance folks also are emotional and intense and can be, at times, confrontational, demanding, impatient and blunt.

Also, despite their charisma, they aren't people-

oriented, says Levis. And their lack of attention to social interaction often turns into an obstacle because they usually need to work through others to get results.

By high maintenance, Levis means they take more effort to manage and there's a greater risk that they will fail in a big way. But they are also the visionaries and creative problem solvers who lead companies to make innovative changes, improve things and produce results. So smart companies should always look for high-

SEE AT WORK, C2

At work

CONTINUED FROM C1

maintenance employees.

But what if you work for one? Levis offers these tips to help you convey your ideas and get along with your high-maintenance boss:

- **Get clues on your boss' mood.** Know that the more stress or pressure they're under, the less likely they are to chitchat. So don't be thrown if one day, your boss wants to shoot the breeze and the next day, he's short and intense. Let your boss give you clues he's in the mood to chat or not.

- **Deliver on time.** High-maintenance bosses don't want to be slowed down by missed deadlines. They also want to get to the finish line, so they don't like listening to a lot of counterarguments, says Levis. If you have suggestions, keep them brief and in order of most important to least important, and state them as benefits or results.

- **Give only essential details.** High-maintenance bosses like to learn, but mostly want to take practical approaches using information they learned. They want to know "exactly what they need to know, when they need it and then they want to move on," says Levis. So don't bog them down with detail when presenting ideas or reports. Always begin with how the

idea will benefit the company, the goal and the customers. Then get into relevant specifics.

- **Don't surprise your boss.** These types of bosses are very sensitive about being kept informed about what they should know. "It has to do with their need to be prepared and stay two steps ahead of everyone else about what is going on," says Levis. So over-communicate with your high-maintenance boss. Share information that helps them see the big picture.

- **Show your loyalty.** They tend to commit themselves completely to what they do. They appreciate and want the same from you and will be loyal in return. Keep your boss informed so she can stay on top of things. Bring solutions to problems and new ideas to your boss first. Do what you say you're going to do by when you say you will do it.

- **Approach your boss with solutions.** These types of bosses have high standards but also tolerate mistakes. If you make one, be prepared to discuss solutions to fix it. Without ideas, options and solutions, this boss will view communicating as a waste of time, says Levis.

High-maintenance bosses can be challenging, but if you learn how to work effectively with one and not take their intensity and directness personally, you'll grow and learn a lot.

E-mail Andrea Kay at andrea@andreakay.com.

164

June 4, 2007

Dear George,

It was so nice seeing you again last week! What a great event - based on audience size, I'd say you have many, many friends and supporters here!

Thank you again for the wonderful dinner - the company and cuisine were an excellent way to cap the day!

I'm enclosing a CD of photos for your digital scrapbook. I also sent a copy to Wende.

Until the next event...

All the best,

Phyllis HPA

G-

2007

Just wanted to thank you for everything. I've learned a lot & hopefully it will help me on my next adventure. I'll be talking to you soon so I can't get too mushy (that's not my style anyway.)

PS: silver henna made by me.

aloha -
Cathy ♥

Heaven

Let's Talk Turtles Outreach Event Draws Enthusiastic Crowd

Summer
2007
MAHEKULA

By Wende Goo, Pacific Islands Fisheries Science Center (PIFSC)

On Thursday, May 31, more than 100 people gathered at the Outrigger Keauhou Beach Resort to learn about sea turtles from a pair of local experts on the subject. The special event was a Pacific Islands Fisheries Science Center (PIFSC) public outreach presentation, *Let's Talk Turtles*. Doing the talking were George Balazs from NOAA's PIFSC and Marc Rice from HPA.

They entertained and educated the rapt audience with tales of their 20 years of collaboration on sea turtle research and conservation.



PIFSC Science Director Sam Pooley (left) and sea turtle scientist George Balazs flank HPA Director of Sea Turtle Research Marc Rice at the PIFSC *Let's Talk Turtles* public outreach event.

Balazs, the foremost authority on sea turtles in Hawai'i, has spent most of his illustrious scientific career working to ensure the recovery of Hawaiian green turtles and has mentored, supported, and collaborated with numerous other sea turtle scientists across the Pacific. One of his most enthusiastic collaborators is Rice, director of the HPA Sea Turtle Research Program. Since 1987, the pair has worked together on important sea turtle research projects locally and around the world.

For over an hour, Balazs and Rice captivated the audience as they described projects they have conducted on the Island of Hawai'i, at French Frigate Shoals, in Japan, and other locations. Their research typically has involved safely capturing turtles in near shore waters, examining and measuring them, tagging them to ensure later identification, and carefully releasing them back into their natural habitat. Many of their projects have involved students, including those from HPA. With guidance from Rice, some students have devised their own research projects and some have even parlayed these early experiences into successful careers in research.

Balazs and Rice made sure the presentation was both informative and entertaining, frequently mixing the serious talk with funny stories about their experiences, their students, and each other.

Thanks to the Outrigger Keauhou Beach Resort for the use of their facility and The Kohala Center for helping with event advertising. ■

166

109-479

(j) WESTERN PACIFIC AND NORTHERN PACIFIC REGIONAL MARINE EDUCATION AND TRAINING.—

MAGNUSON-STEVENSON
JAN 2007

(1) IN GENERAL.—The Secretary shall establish a pilot program for regionally-based marine education and training programs in the Western Pacific and the Northern Pacific to foster understanding, practical use of knowledge (including native Hawaiian, Alaskan Native, and other Pacific Islander-based knowledge), and technical expertise relevant to stewardship of living marine resources. The Secretary shall, in cooperation with the Western Pacific and the North Pacific Regional Fishery Management Councils, regional educational institutions, and local Western Pacific and Northern Pacific community training entities, establish programs or projects that will improve communication, education, and training on marine resource issues throughout the region and increase scientific education for marine-related professions among coastal community residents, including indigenous Pacific islanders, Native Hawaiians, Alaskan Natives, and other underrepresented groups in the region.

(2) PROGRAM COMPONENTS.—The program shall—

(A) include marine science and technology education and training programs focused on preparing community residents for employment in marine related professions, including marine resource conservation and management, marine science, marine technology, and maritime operations;

(B) include fisheries and seafood-related training programs, including programs for fishery observers, seafood safety and seafood marketing, focused on increasing the involvement of coastal community residents in fishing, fishery management, and seafood-related operations;

(C) include outreach programs and materials to educate and inform consumers about the quality and sustainability of wild fish or fish products farmed through responsible aquaculture, particularly in Hawaii, Alaska, the Western Pacific, the Northern Pacific, and the Central Pacific;

(D) include programs to identify, with the fishing industry, methods and technologies that will improve the data collection, quality, and reporting and increase the sustainability of fishing practices, and to transfer such methods and technologies among fisheries sectors and to other nations in the Western, Northern, and Central Pacific;

(E) develop means by which local and traditional knowledge (including Pacific islander, Native Hawaiian, and Alaskan Native knowledge) can enhance science-based management of fishery resources of the region; and

(F) develop partnerships with other Western Pacific Island and Alaskan agencies, academic institutions, and other entities to meet the purposes of this section.

Thanks for the heads-up, George -- you're welcome to talk to anyone about your research on company time. Particularly a meeting called by an important partner like the Council. And if you wander into policy issues, just say it's your personal opinion and you're not representing NOAA. That's not so unusual. - Sam

4/6/07 From Sam CC Bud

George Balazs wrote:

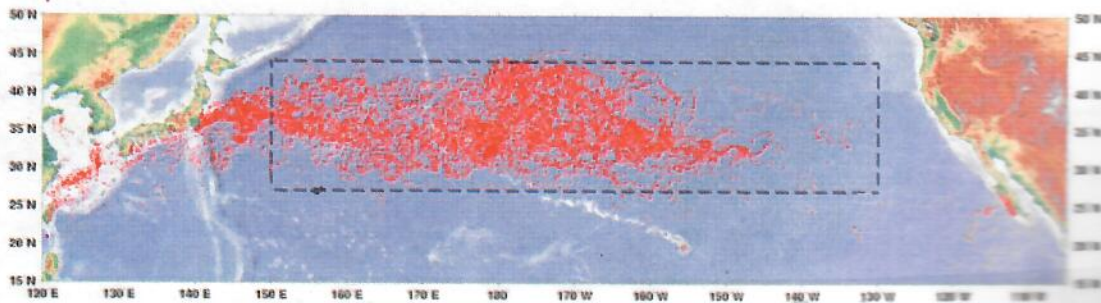
I read this message pm of the 5th when I returned from New Caledonia. Sylvie had left a voice mail on my cell asking about this- heard when I got off the plane lam of the 5th. I've told them I simply can't- clashes with things already planned for both days. Anyway this is an fyi only, no particular actions needed on your parts. But I'm sure such an invite will arise again, and depending upon what's involved it perhaps might be best if I took a/l to talk so that no one misunderstands anything re noaa. Will figure that out if and when the time comes. But knowing Kitty-- it will.

----- Original Message -----

Subject: puwalu IV - april 10 and 11 - ala moana hotel
Date: Sat, 31 Mar 2007 17:29:42 -1000
From: Kitty Simonds <kitty@lava.net>
To: George Balazs <gbalazs@mail.nmfs.hawaii.edu>

george, would you be willing to speak to the hawaiian practitioners of the ocean and land during lunch on wednesday, april 11 about your work recovering the honu? it would be great if you would also talk about your collaboration with the japanese. pics, pics and graphs. george, i would be so very grateful if you would accept this invitation. the council is charged with working with indigenous communities and to consider traditional management (all this in the msa 1996 and 2006 reauthorizations). about 80 practitioners from every moku, plus a few others.

Figure 1. Map of North Pacific Ocean and 186 satellite tagged loggerhead sea turtle tracks (red) covering the time span 26 January, 1997 – 1 July, 2006. Dashed line delineates grid used for pelagic habitat study, 150°E – 130°W longitude, 27°N - 44°N latitude.



Ho brought Hawai'i to the world via TV

BY WILL HOOVER
Advertiser Staff Writer

Don Ho was the right entertainer in the right place at the right time.

He became the image of the musical sound of the Islands at a time when Americans and much of the rest of the world were thirsting for all things Hawai'i — right after Hawai'i became a state in 1959.

That was the same year that Qantas Airways introduced the first jet airplane service across the Pacific, giving eager post-World War II travelers a quick means of reaching Waikiki and the land of aloha so many had only read about in magazines and seen in films.

And there, waiting to entertain them, was Ho.

Those who couldn't make it to the 50th state still had ample opportunity to see Ho through another of America's great love affairs of the age, network television.

Beginning in the early 1960s, Ho appeared on dozens of specials and prime-time TV shows, including "Laugh-In" and "The Tonight Show." In 1969, Ho appeared a number of times on NBC's "Kraft Music Hall" and ended up hosting the show that season.

He appeared as himself on "Batman," "I Dream of Jeannie," and "Sanford and Son."

And although it wasn't around for very long, one program that seemed to stick in the collective mind of viewers was his own "The Don Ho Show" — a half-hour daytime ABC television variety show that ran from October 1976 to March 1977.

Here, Mainland folks got to see Ho — a hip, handsome and laid-back Island version of Dean Martin and Elvis — right in his own Waikiki setting. Mostly taped at the Outrigger Reef Ho-



Advertiser library photo

Don Ho with Saki in "Kraft Music Hall Presents: The Don Ho Fourth of July Special," which aired July 2, 1976.

tel's Ocean Lanai, the series presented the picture postcard, beach-boy Hawai'i to audiences everywhere, beckoning them to come.

Ho's initial leap of fame happened so quickly, the entertainer himself never seemed to fully grasp the magnitude of it. Almost without realizing it, he had become Hawai'i's ambassador to the rest of the United States and the world.

Ho's signature song and biggest hit, "Tiny Bubbles," bounced around the national Billboard charts in 1966 for more than four months. But "Tiny Bubbles" and Ho's other songs became so closely associated with the singer, they practically transcended chart listings. Visitors by the tens of thousands dutifully carted recordings home and then picked up more on their return trips.

And Ho's almost mystical audience appeal led people to continue to come to Waikiki to see the performer they felt they already knew. And that was just the way Ho wanted them to feel.

For more than four decades, people just couldn't get enough of him.

Crocodile removed from endangered species list

Numbers have risen significantly over the last 32 years

By Mark Potter
Correspondent

Updated: 1:16 p.m. HT April 19, 2007

HOMESTEAD, Fla. - For wildlife officials, today is an important milestone and a sign of success. After three decades, the American crocodile goes off the federal endangered species list. It happened because science, government and industry agreed to protect a prehistoric animal that was about to go away.

The ancient predator had become a victim of development, habitat loss and hunting.

"We're doing something good, and they are responding," Joe Wasilewski, a wildlife biologist, says.

In the United States, the crocodile is found only in South Florida. It's much more reclusive than its cousin, the alligator and 32 years ago was placed on the endangered species list.

In 1975, the American crocodile was very close to extinction in the U.S., with only 200 of them — and just 10 to 20 breeding females. Scientists say there now may be as many as 2,000 crocodiles in Florida. But to collect data, they have to catch them!

Over the years, Wasilewski has captured thousands of crocodiles, gathering information on their feeding and nesting habits and their growth rates.

"We're learning how to manage the species better," Wasilewski says.

Wildlife experts say the main reason crocodiles rebounded is that sanctuaries were set aside to protect them. One in the Everglades National Park, a second at Crocodile Lake in Key Largo, and a third at the cooling canals of the Turkey Point nuclear power plant, where crocodiles are thriving.

"The key to recovery of endangered species is habitat, habitat, habitat," says Frank Mazzotti, a wildlife scientist at the University of Florida.

After nearly losing the crocodile, a successful man-made effort to bring it back.

Geoffrey Bonnycastle
JIA / LU

518 COYLE Avenue
ARCADIA, CA 91006
(626) 446-6258 office
353-3592 Mobile
821-5361 home

(170)

As of 6/11/07:

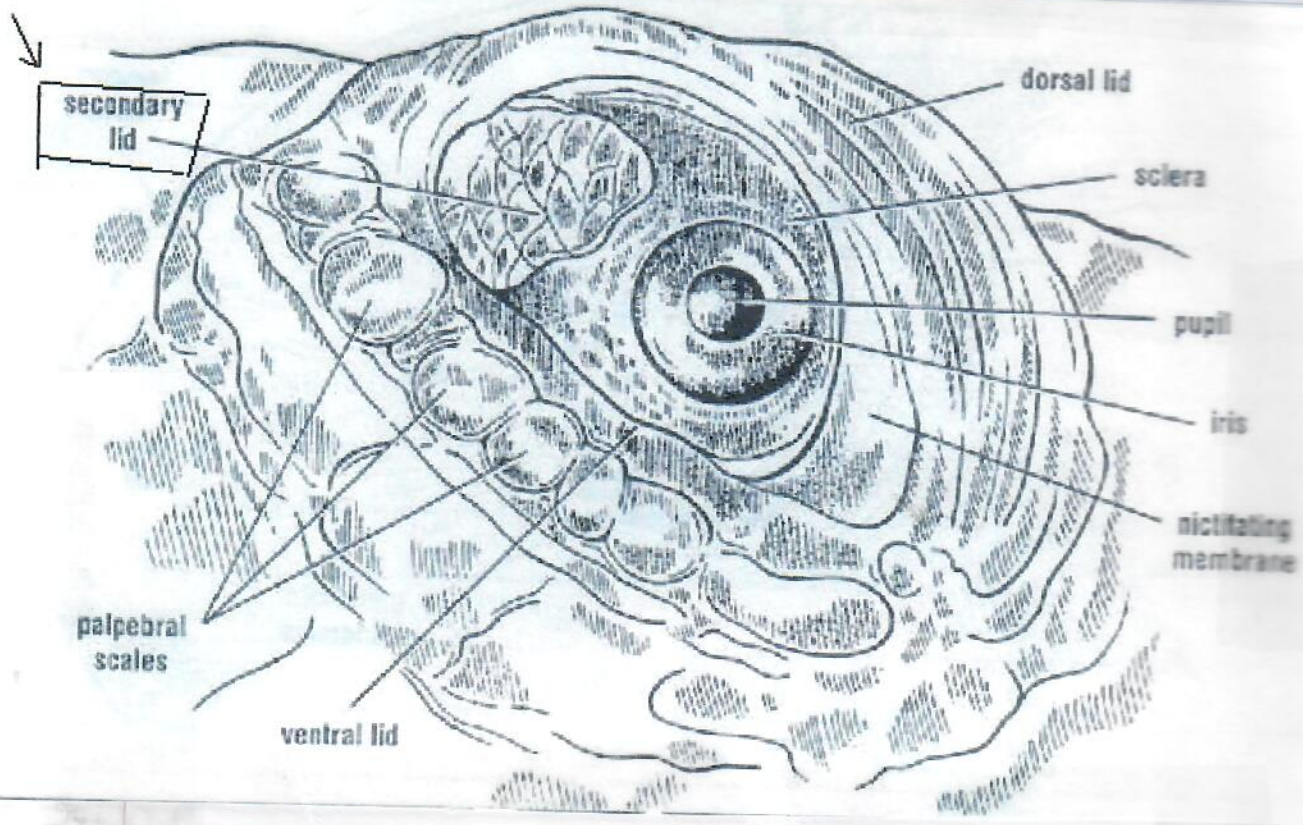
AA 710C7M2 Shan
124,388

CO KF185678 0965
73,489

HA
206,059 Sha.

A		4ok JA	PHONE 836-7497
GB	25,736		8923
LB	22,366		0920
PB	1,000		2768
	49,102		

881-301 Home
 323-3212 Mobile
 (888) 442-6328 Fax
 4000111111111111
 218 GALT AVENUE
 710 S. LA
 GALT AVENUE



172

KARL Kenyon

(Karl Walton KENYON Passed away at his home in Hilo, HI, March 27th, ²⁰⁰⁷. Born and raised in LaJolla, CA. He attended Pomona College and Cornell University. Served in WWII as a naval aviator aboard the USS Sangamon escort carrier. Discharged with Honors as a Lt. Commander. Taught at Mills College and then joined the US Fish and Wildlife Service in 1947. Here his work involved Northern Fur Seal and Sea Otter research in Alaska, and was largely responsible for the reintroduction of the Sea Otter on the Washington coast. He also participated in conservation on the Laysan Albatross on Midway Is. and the Hawaii Monk Seal in the Northwestern Hawaiian Islands. Both his professional and private life were distinguished by his continual work on environmental causes and wildlife protection. Survived by his companion of 39 yrs., Clarence Larson, his brother, Frederick (Mel) Kenyon and two nieces and two nephews.

Published in print on 4/8/2007. *Sunday Seattle Times*

"POSTERIOR CONJUNCTIVA" Hawaiian Green



NOTE
5/21/07
Bob Morris
note two
SAME w/
olive
Ridley

JOHN F. PEYTON JR. / 1944-2007

Ex-isle official dies in crash

4/07 HSB

The lawyer is praised for his public service, ethics and dedication

By Robert Shikina
rshikina@starbulletin.com

John Francis Peyton Jr., a veteran federal prosecutor in Hawaii and former director of the state Department of Public Safety, died in a car accident in Africa. He was 62.

Relatives said Peyton was driving with his wife, Eileen, on Wednesday night, Hawaii time, when the car's tire blew out, flipping the vehicle several times.

Peyton died in the crash. His wife, who escaped with minor injuries to her shoulder, will return to Honolulu in a few days, said Peyton's son John Peyton V.

Peyton was working in Malawi, a country in southeastern Africa, on a U.S. Treasury Department contract helping the Malawian government pass

legislation to crack down on money laundering and other financial crimes. He also helped create policies to apprehend criminals, said his daughter Erin Peyton.

"He was very committed to public service and to helping other people," she said by phone from New York.

Peyton served 20 years as an assistant U.S. attorney, including 18 years in Honolulu. In 2004, Peyton left after 18 months as director of the state Public Safety Department to help Bosnia establish its Rule of Law administration.

Peyton handled high-profile cases. He successfully prosecuted Ronald Rewald in 1985 for swindling about \$20 million from Hawaii residents. Rewald was sentenced to 80 years in prison but was released in 1995 after a back injury placed him in a wheelchair.

Senate President Colleen Hanabusa said Peyton was instrumental in the start-up of the federal Weed and Seed program to rid neighborhoods of drugs.



John Peyton Jr.: He was working in Africa to help with legislation to fight money laundering

Peyton also served as chief litigator for the Central Intelligence Agency.

"He was just a great guy with a wonderful sense of humor, a great lawyer," said Hawaii Attorney General Mark Bennett, who worked with Peyton as an assistant U.S. attorney.

"John was honest, ethical and tough," Bennett said.

He added, "John was the kind of person who wanted to try to make life better for people and try to do the right thing."

Gov. Linda Lingle said, "John was a good man and a dedicated public servant who always strived to ensure the safety and well-being of the people of Hawaii. His commitment to helping people extended to the international community."

In January 2006, Peyton began his contract with the U.S. Department of Treasury that would have ended this December. Peyton planned to retire and divide his time between Honolulu and another house in Idaho, his son John said.

Born Oct. 27, 1944, in New York, Peyton graduated from the University of Dayton and received his law degree from the University of Cincinnati and a master's of law from George Washington University. He came to Hawaii in 1983.

John Peyton V said he spoke to his father the night before he learned of the accident. His parents talked about their plans for a two-day drive to a game park, where they would observe wildlife and visit a nearby village.

Aside from his wife, son and daughter, Peyton is also survived by daughter Molly Peyton of Massachusetts, daughter-in-law Nicole and grandson Micah. Services at Holy Trinity Catholic Church at 5919 Kalamiaole Highway are pending.

174

HONOLULU HONU

4

4-1-07
HSB A15



JAMM AQUINO / JAQUINO@STARBULLETIN

A cartoon sea turtle seems to mirror the curiosity of 9-year-old K-Aloha Stephens as he looks through his bag of goodies yesterday afternoon during the E Malama Na Keiki Easter Celebration on the Farrington High School grounds in Kalihi. The event, in its seventh year, is put on by four nonprofit organizations — Angel Tree Foundation, Spirit of Aloha Inc., Hui Ho'omalu and Keiki O Ka Aina Family Learning Centers — to encourage and promote family well-being during the Easter period.

No.337, Suogang Village, Magong City, Penghu County
880, Taiwan (R.O.C.)

No.337, Suogang Village, Magong City, Penghu County
880, Taiwan (R.O.C.)



KAnoko 2/27/07

YARU CAI
NO. 15, LANE 218
DATONG ROAD
LUJHU TOWNSHIP
KAOHSIUNG COUNTY 821

TAIWAN ROC
886-7696 8888

cell 886(0) 963047-439

台灣省澎湖縣馬公市鎖港里337號

LITITIA HSIU-CHI WENG
NO. 337, SUOGANG VILLAGE
MAGONG CITY, PENGHU COUNTY 880
TAIWAN ROC

176

The Skywalk at the Grand Canyon opens to the public on March 28. Above, dancers of the Hualapai Nation perform during yesterday's Skywalk opening ceremonies on the Hualapai Indian Reservation at Grand Canyon West, Ariz.

Tribe builds on sky to lure tourists

The new Skywalk's glass-bottom deck is 4,000 feet above the Grand Canyon floor

By **Chris Kahn**
Associated Press

HUALAPAI INDIAN RESERVATION, Ariz. >> Indian leaders and other visitors stepped gingerly beyond the Grand Canyon's rim yesterday, staring through a glass floor and into the 4,000-foot chasm below during the opening ceremony for a new observation deck.

A few members of the Hualapai Indian Tribe, which allowed the Grand Canyon Skywalk to be built, hopped up and down on the horseshoe-shaped struc-

ture. At its edge — 70 feet beyond the rim — the group peeked over the glass wall.

"I can hear the glass cracking!" Hualapai Chairman Charlie Vaughn said playfully.

The massive deck is anchored deep into a limestone cliff. As people walk across it, the glass layers creak and the deck wobbles almost imperceptibly. To one side, the Colorado river appears as a slim, pea-green ribbon. To the other, people can see a triangular dip in the canyon's ridge, known as "Eagle Point" because it looks amazingly like an eagle with outstretched wings.

The Hualapai, whose reservation is about 90 miles west of Grand Canyon National Park, allowed Las Vegas developer David Jin to build the \$30 mil-

lion Skywalk in hopes of creating a unique attraction on their section of the canyon.

The tribe will include access to the deck in a variety of tour packages ranging from \$49.95 to \$199.

The Skywalk is scheduled to open to the public March 28.

The tribe hopes it becomes the centerpiece of a budding tourism industry that includes helicopter tours, river rafting, a cowboy town and a museum of Indian replica homes.

Robert Bravo Jr., operations manager of the Hualapai tourist attractions called **Grand Canyon West**, said he hopes

the Skywalk will double tourist traffic to the reservation this year, from about 300,000 visitors to about 600,000. In later years, he hopes it brings in

about 1 million tourists.

Architect Mark Johnson said the Skywalk can support the weight of a few hundred people and will withstand wind up to 100 mph. The observation deck has a 3-inch-thick glass bottom and has been equipped with shock absorbers to keep it from bouncing like a diving board as people walk on it.

Jin spent several years persuading the tribe to build the observation deck, and he fronted the money to build the Skywalk. According to the tribe, Jin will give it to the Hualapai in exchange for a cut of the profits.

Jin wouldn't speak to reporters about his financial settlement with the tribe.

Construction crews spent two years building the walkway.



Dear Council Ohana Members — Past and Present:

You are cordially invited to attend a once in a lifetime event—the simultaneous celebration of the Western Pacific Regional Fishery Management Council's 30th anniversary, the National Oceanic and Atmospheric Administration's 200th anniversary and the reauthorization of the Magnuson-Stevens Fishery Conservation and Management Act. Join other past and present members of the Council, the Scientific & Statistical Committee, Plan Teams, Advisory Panels and staff at this Council ohana reunion—featuring live music as well as tuna, swordfish and bottomfish from Hawaii's model fisheries!

When: 4 p.m. to 9 p.m., Monday, March 12, 2007

Where: United Fishing Agency, Pier 38, 1133 North Nimitz Highway
(across from the Nimitz Business Center)

RSVP by February 26, 2007.

Phone 808 522-8220; fax 808 522-8226; or email ellen.reformina@noaa.gov

Aloha,

Kitty M. Simonds

Kitty M. Simonds
Executive Director

Sean Martin

Sean Martin
Chair

178

Subject: External program review -- results
From: "Samuel Pooley" <Samuel.Pooley@noaa.gov>
Date: Thu, 08 Mar 2007 17:41:00 -1000
To: #HONUSERS <honusers@mail.nmfs.hawaii.edu>

Good afternoon, everyone. We just finished the three day external program review of the Center. Each division provided an overview of their program and snap-shots of some illustrative projects. The review panel was very appreciative of the contributions and all the divisions did an excellent job, which is a reflection on the work of everyone here at the Center. I.e., you. So thank you very much. Pat yourselves on the back.

While there will be a written report, the results of the review can be summed up by the panel's response to this question: Is the Center doing the right things right? And the answer, in bold letters, was YES. Sure there are issues to be met, corrections to course that can be taken, etc. And the review panel challenged us to take a hard look at a number of topics. But the general theme was clear. The review panel was also very demonstrable in their recognition of the top science being conducted here and the highly competent scientists who are doing it. That should be no surprise for any of us but it's always nice to hear.

I'd like to recognize the tremendous support that the administrative assistants, ITS, and others of our staff gave to making this review come off perfectly. It was hard work and the review would not have been successful without their help. Thank you.

One rays on the beach in Waikiki

2-2-07 THA



ABOVE: For many visitors to Waikiki, monk seal "H59" was the star attraction. **ABOVE LEFT:** H59 was born on Kauai six years ago; she spends most of her time between Kalaeloa and Hanauma Bay.

Peter Gellatly photos



SECRETS OF SUCCESS

John-Paul Micek

Protecting intellectual property

I recently attended a teleconference where my jaw dropped practically the entire time – and not because the content was fabulous. I was in shock because it was my content that the leader was sharing – without giving any credit to where or from whom she had obtained the information.

In an age where information is a commodity, many business owners haven't educated themselves on what they can and cannot use themselves to re-sell for their own profit.

This topic came up again when I was talking to a business owner who was putting together a unique presentation. We were discussing ways for her to protect her information from being re-used, or distributed without her company name or author's tag on it.

I gave her several tips on what she could do immediately to begin protecting her work, and then I encouraged her, as I would any business owner: Learn everything you can about protecting your intellectual property.

That's because once you do all the research and put in all the time, money and energy into innovating something that you put together and sell, you'll most certainly want it protected from others who would simply copy it.

And, do it soon.

Let me share one secret that can help you in a court of law, if you ever needed several ways to prove that you developed and used the information first.

Mail yourself a printed copy of the workshop handouts, book, or printed Web pages that you have on content that you create. I would also include your handwritten notes, mind-maps, or anything else you used to develop your innovative idea or material. Whether it's a Web site, company name, unique strategy, or design, mail it to yourself before you let the general public see the information.

Lately, I have received mail without the date stamp, so I would suggest that you also have a confirmation of delivery that shows the date, or ask the postal service to hand-cancel it with the postmark date.

Once you receive it, do NOT open the envelope. Keep it in a sealed envelope in a safe place, so that the court could open it, if you needed additional proof that you had it in use first.

This isn't necessarily a legal strategy, but it has helped others prove their contributions to a book or a product. After all, if you have gone to great lengths to protect this information, and your copycat competitor did not, who do you think the judge will side with?

It is also important that you understand the various types of intellectual property violations: patent, trademark, and copyright infringement; unfair competition; and counterfeiting and piracy. I highly recommend you do some research so you will know the law about using other people's material, and protecting your own.

John-Paul Micek is a business coach at RPM Success Group Inc. He can be reached at JPM@RPMsuccess.com

180

Rockies wolves to lose federal protection

1/28/07
Officials plan to
take the species off
the endangered list

HSB C2
Associated Press

BILLINGS, Mont. >>
Wolves in the northern Rockies will be removed from the endangered species list within the next year, the U.S. Fish and Wildlife Service said Friday, a move that would open up the population to trophy hunting.

Federal officials are expected to announce the plan tomorrow, said Sharon Rose, a spokeswoman for the service. The agency also will finalize removal from the list of a separate population of wolves in the Great Lakes region.

Federal officials have been readying a proposal calling for Montana, Idaho and Wyoming to assume management of the 1,200-plus wolves in their states. The plan would go into effect following a year-long comment and review period, Rose said.

If the proposal for the Rocky Mountain gray wolf skirts expected legal challenges and becomes law, it would open wolves there to trophy hunting for the first time since an intensive restoration effort began in the late 1980s. The Great Lakes wolves would be protected from public hunting for at least five years.

A similar proposal made last year to take about 4,000 wolves off the endangered list in Minnesota, Michigan and Wisconsin is being finalized, Rose said.

Gray wolves were virtually eliminated across the West by the 1930s following a government-sponsored eradication effort. The animal was declared endangered in 1974.

Federal and state biologists previously have said that each of the Rocky Mountain states would be required to maintain a minimum of 100 wolves, including 10 breeding pairs, or the animal would again come under federal protection. Before reaching that minimum, hunting restrictions would kick in if the number of breeding pairs dropped to 15.

"We have no concern about the long-term future of wolves," said Ed Bangs, coordinator of the northern Rockies wolf recovery program for the Fish and Wildlife Service.

But Jamie Rappaport Clark with Defenders of Wildlife said that with the exception of Montana, the state plans come up short.

"We are absolutely certain removing northern Rocky Mountain wolves from the endangered species list at this time will only jeopardize their continued recovery," Clark said.

Others claim the federal government is not moving fast enough. Friends of the Northern Yellowstone Elk Herd, based in Montana, is seeking state assistance for a planned lawsuit to make the delisting effective immediately because wolves are reducing the elk herd.

JAN 2007 HSB

Grapeseed may boost cardiac health

The Grapeseed Cure: This extract blasts cholesterol and boosts cardiac health.

WHAT IT IS

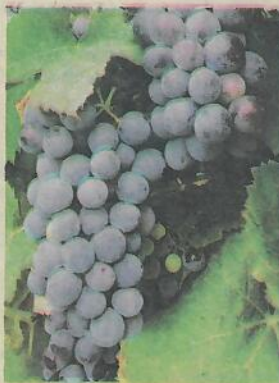
Grapeseed extract (GSE) is made from the small seeds of red grapes—the same kind of grapes used to make wine.

WHAT TRADITIONAL MEDICINE SAYS

European folk healers have long used grapes to treat a wide range of health problems, including eye infections, liver and kidney diseases, cholera, and smallpox. In the early 20th century, the fruit became popular in a diet known as “the grape cure” and was promoted as a cancer treatment.

WHAT WE KNOW

GSE contains antioxidants that researchers believe boost cardiac health, in part by preventing the development of plaque in arteries, which can cause heart disease. GSE's antioxidants may also protect against cancer by blocking mutations in DNA that could lead to the disease.



MORGUEFILE.COM

What new research shows
In a recent 4-week study at the University of California-Davis, cardiovascular researchers gave a daily dose of 150 milligrams or 300 milligrams of GSE or a placebo to 24 people with some combination of high cholesterol, high blood pressure, high blood sugar, and obesity. Both GSE groups saw blood pressure drop, which may lower heart disease risk; those in the 300 milligrams group also experienced a drop in damaging oxidized LDL cholesterol levels. GSE is regarded as a safe supplement by the FDA and hasn't been associated with any serious side effects.

WHAT TO TAKE

Choose a GSE that is standardized to 95 percent OPC content—it's the active ingredient—and take 50 milligrams a day as a preventive measure; see an herbal practitioner if you want to take a higher dose.

Rodale Press Inc.

How to determine what you should be backing up

WELL, it's the new year, a time when most local folks traditionally go through the exercise of cleaning up their houses, offices, cars, and whatnot.

What about computers? Does anyone actually clean these up anymore?

We're not talking about the exteriors of a PC. After all, just about everyone dusts their boxes, wipes down their screens and shakes out their keyboards once in a while.

Rather, when we talk about cleaning up a PC, we're typically referring to its innards—more specifically its hard drive.

We've all heard the mantra that “disks are so cheap now,” and this is true. So for home users, you pretty much don't need to delete anything. For most folks, you won't fill up your hard drive until it's time to buy a new PC. Those of you who dabble in video editing or other pursuits that require a lot



TECH VIEW

John Aagsalud

of disk space are usually savvy enough to know what to delete.

What about businesses or government organizations? Certainly you can't keep everything, nor would you necessarily want to. After all, while disks are cheap, the costs still add up over time.

What you really need is a data retention policy. Simply put, such a policy sets the rules by which data should be saved, and just as importantly when it

should be deleted.

Data retention policies have been in place long before computers were even in vogue. Of course, in those days, data was mostly on paper, but organizations, especially those in the financial or insurance industries, had rules in place to deal with the paper.

WHAT are some of the things your organization take into account when developing such a policy?

A popular approach is to limit the size of user e-mail boxes: In and of itself, this is not a bad tenet, but it's easy to get around. Most users who want to keep old e-mail will find a way around this limit, thereby moving the problem but not solving it.

Still, a good policy must address e-mail. But don't forget about instant messaging either. While many folks still view IM as a plaything for teenage girls, more and more respectable

adults are using it to get work done. Saving such communications is often important to establishing a trail as to what exactly happened.

Follow the age-old rule of “backups always work: it's the restoration that causes the problem.” Make sure that data archived to offline storage, such as tape, CD/DVD or even disk can be restored in a timely and effective manner. Define procedures for backup and restore, and test those procedures on a regular basis.

There are a host of other considerations when defining such a policy, many of these are specific to your business or industry. Expect your needs to change over time and review your data retention policy on a regular basis.

John Aagsalud is president of ISDI Technologies Inc., a Honolulu-based IT consultancy. Call him at 944-5742 or e-mail jagsalud@isdi-hi.com.

Scene Plan Shows & Spotted this. read Test "restoring" from the extent from the extent

182

George SHANDELL GRADUATION 2003

You will never know how grateful I am to you for all you have done for Shandell while she has been in Hawaii. She has shared so many wonderful things about you and I am so appreciative. Also, it was so kind of you to let her have the extra time off during our visit to Hawaii.

I truly enjoyed meeting you, Shawn & Paul. FINALLY! The turtles put on such a good show for us also. We have many family photos with them. 😊

Thanks for everything!
Many kisses

Turtle power

"TMNT," a computer-animated movie featuring the Teenage Mutant Ninja Turtles, brings in \$25.45 million in ticket sales, becoming the highest-grossing movie in North America this week. >> D1



George -

• Wonderful to be able to talk with you Thursday. Here is ^{the} signed copy of performance evaluation. Miss working with you in person also -

5/07

Mahalo
Dennis

12/06

HEMATOLOGY & SERUM

(ISIS Normals)	
DATE	Bob Morris Normals
HEMATOLOGY	
RBC (1.94)	
Hgb (10.7g/dl)	
Hct (27-49%)	17-35
MCV (154.6 fl)	
M.C.H.(55.2 pg)	
M.C.H.C.(35.7 g/dl)	
PLATELETS (28)	
Reticulocytes	
Nucleated RBC/100 WBC	
WBC (2900-18000)	5.9-23.6
Heterophils (876-6630)	236-4012
Lymphs (1220-10100)	3127-19588
Monos (108-1344)	236-4012
Eos (78-1080)	236-6844
Baso (78-339)	0-1%
Azurophils (168-2700)	0-4%
Bands (0)	
ESR (at 60 min)	
SERUM CHEMISTRY	
TP & ALBUMIN	
Total Proteins (2.6-5.7g/dl)	2.9-5.6
Albumin (1.2-3.1g/dl)	0.6-2.2
Globulins (1.4-3.3g/dl)	1.8-4.0
Uric Acid (0.2-1.5 mg/dl)	0-4.5
BLOOD CHEMISTRY	
Glucose (98-172 mg/dl)	64-234
BUN (54-154 mg/dl)	0-320
Creatinine (0-0.4 mg/dl)	0.1-0.5
HEPATIC PROFILE	
Cholesterol (142-354 mg/dl)	32-280
Triglycerides (124-932mg/dl)	
Direct Bilirubin (mg/dl) N.D.	
Indirect Bilirubin (mg/dl) N. D.	
Total Bilirubin (0.2-1.4 mg/dl)	
AST-SGOT (148-982 IU/L)	1-270
ALT-SGPT (5-82 IU/L)	0-50
ALK P (31-183 IU/L)	12-62
Gamma GT (0-21 IU/L)	
CK (190-1902 IU/L)	

184

Golf course chemicals found to pose low risk

Your typical golf course is hardly an all-natural playground. To create verdant fairways, lush rough and tight greens, all manner of chemicals, including pesticides, are usually needed.

Might that have an effect on golfers, who may breathe in pesticide vapors while playing? A study by Rebecca R. Murphy and Douglas A. Haith of Cornell shows that there is little inhalation risk, at least at courses in the Northeast.

The study, published by the journal Environmental Science and Technology, assessed the health risks of 15 pesticides, including fungicides like azoxystrobin and iprodione and herbicides like bensulide, which is used to control crabgrass, at three locations, Boston; Philadelphia; and Rochester, N.Y.

The study found that for all 15 chemicals, the long-term noncarcinogenic health risk — as identified by what is known as a "hazard quotient" — was extremely low.

Even for course workers or tournament spectators, who spend more time on a course, risks were minimal.

Science C7 1-14-07 HSB



HONOLULU STAR-BULLETIN / OCTOBER 2004

NOAA's research vessel Hi'ialakai.

TALK STORY WITH NOAA SCIENTISTS

While the NOAA ship Hi'ialakai plies the waters of the Papahānaumokuākea Marine National Monument for the next three weeks, the three government agencies that co-manage the area will host a series of free Saturday morning "talk story" sessions with scientists.

Sessions will be at 9-11 a.m. next Saturday, July 21 and 28, and Aug. 4. All will be at the Outrigger Waikiki, 2335 Kalakaua Ave., on the second floor near the Hula Grill. Valet parking is \$5 with validation at the event. For more information, contact Ethan Chang at 921-9731.

Part A. Please provide a statement of value describing the collaborative efforts and contributions by the Foreign National Guest (identified below) that will further NOAA's mission. Please indicate the Home Country and dates of assignment for the Foreign National. Include sufficient and specific detail and clarity regarding the qualifications and expertise that the foreign national will contribute to your project.

Irene Nurzia-Humburg possesses specialized experience and knowledge in the conduction of field monitoring and research of marine turtles at remote nesting beaches. This expertise includes the application of passive integrated transponder tags, health and disease diagnostic screening, and complex documentation of turtle behaviors relevant to essential population censusing. In addition, Irene Nurzia-Humburg has the demonstrated superior ability to proficiently and harmoniously train other personnel in carrying out specialized field research techniques of nesting marine turtles. The above attributes are of high value to the NOAA PIFSC in order to proceed successfully with a long term monitoring and research program of nesting green turtles in the newly established Monument in the Northwestern Hawaiian Islands. Irene Nurzia-Humburg will contribute significant skills and the enhancement of field and laboratory procedures necessary for NOAA to accomplish the mission of recovering threatened and endangered marine turtles in the insular Pacific islands.

Ms. Nurzia-Humburg is an Italian national. She will be working at NMFS/PIFSC/PSD/MTRP between 03/20/07 and 03/20/08.

Table 1: 120 Species listed in order of percent occurrence in 372 samples

Species	#/Ttl	%Smp	%/tr	Av%	(SD)
<i>Acanthophora spicifera</i>	237	64.0%	5:1	44.1%	(32.8)
<i>Hypnea musciformis</i>	154	41.4%	4:1	42.0%	(32.7)
<i>Gracilaria salicornia</i>	138	37.0%	19:1	40.9%	(33.0)
<i>Codium edule</i>	95	25.5%	10:1	32.1%	(30.5)
<i>Laurencia nidifica</i>	88	23.7%	1:1	12.5%	(16.5)
<i>Codium arabicum</i>	78	21.0%	12:1	28.9%	(30.5)
<i>Amansia glomerata</i>	70	18.8%	3:1	30.0%	(34.1)
<i>Dictyosphaeria cavernosa</i>	62	17.0%	1:1	20.2%	(27.6)
<i>Halophila hawaiiiana</i>	59	15.9%	5:1	24.0%	(14.3)
<i>Pterocladia capillacea</i>	57	15.3%	3:1	35.5%	(31.3)
<i>Dictyota acuteloba</i>	50	13.4%	0.43:1	8.5%	(8.5)
<i>Lyngbya majuscula</i>	49	13.2%	0.07:1	4.0%	(3.5)
<i>Spyridia filamentosa</i>	49	13.2%	0.4:1	15.7%	(25.7)
<i>Dictyosphaeria versluysii</i>	36	9.7%	1:1	5.5%	(5.8)
<i>Sargassum echinocarpum</i>	36	9.7%	3:1	10.89%	(13.2)

<i>Halimeda discoidea</i>	29	7.8%	0.45:1	7.2%	(9.6)
<i>Sargassum sp.</i>	29	7.8%	0.14:1	36.3%	(32.0)
<i>Gracilaria coronopifolia</i>	25	6.7%	2:1	20.8%	(28.9)
<i>Sargassum polyphyllum</i>	25	6.7%	2:1	12.6%	(22.6)
<i>Valonia aegagropila</i>	21	5.7%	0.11:1	3%	(2.8)
<i>Halophila decipiens</i>	15	4.0%	15:1	28.4%	(28.8)
<i>Ulva reticulata</i>	15	4.0%	1:1	33.8%	(40.0)
<i>Ceramium sp.</i>	14	3.8%	0:14	100%	trace
<i>Hypnea cervicornis</i>	14	3.8%	2:1	23.1%	(34.2)
<i>Sphacelaria furcigera</i>	14	3.8%	0.08:1	1%	(1>trace)
<i>Champia parvula</i>	13	3.5%	0.18:1	16.0%	(19.8)
<i>Cladophora sp.</i>	13	3.5%	0.18:1	51.0%	(69.3)
<i>Sphacelaria sp.</i>	13	3.5%	0:13	100%	trace
<i>Turbinaria ornata</i>	13	3.5%	0.86:1	16.5%	(20.6)
<i>Codium phasmaticum</i>	12	3.2%	12:0	18.5%	(16.9)

'Red wine extract found to keep obese mice healthy

A landmark study finds the supplement blunts the ill effects of weight and aging

By Seth Borenstein
Associated Press

WASHINGTON >> Huge amounts of a red wine extract seemed to help obese mice eat a high-fat diet and still live a long and healthy life, suggests a new study that some experts are calling "landmark" research.

The big question is, can it work the same magic in humans?

Scientists say it's far too early to start swilling barrels of red wine. But some are calling the latest research promising and even "spectacular."

The study by the Harvard Medical School and the National Institute of Aging shows that heavy doses of red wine extract lower the rate of diabetes, liver problems and other ill effects in obese mice.

Fat-related deaths dropped 31 percent for obese mice on the supplement, compared to

"These fat old mice can perform as well on this skill test as young lean mice."

Dr. David Sinclair
Study's lead author

untreated obese mice, and the treated mice lived longer than normal, the study said.

Astonishingly, the organs of the fat mice that got the wine extract looked normal when they shouldn't have, said lead author Dr. David Sinclair of Harvard Medical School. He said other preliminary work still being done in the lab shows the wine ingredient has promise in lengthening the life span of normal-sized mice, too.

Sinclair has a financial stake in the research. He is co-founder of a pharmaceutical firm, Sirtris Pharmaceuticals Inc. of Cambridge, Mass., which is testing the safety of using the extract on humans for treatment of diabetes.

For years, red wine has been linked to numerous health benefits. But the new study, published online in the journal *Nature*, shows that mammals

co-author Rafael de Cabo of the National Institute on Aging. "These fat old mice can perform as well on this skill test as young lean mice," Sinclair said.

The only major body measurement that didn't improve — aside from weight — was cholesterol, and that didn't seem to matter in the overall health of the mice, Sinclair said.

The study is so promising that the aging institute is considering a repeat of the same experiment with rhesus monkeys, coming the closest to humans, said institute director Dr. Richard Hodess.

Hodess cautions that it's too early for people to start taking non-regulated resveratrol supplements because safety issues haven't been addressed.

Sirtris Pharmaceuticals is working on a high-dose resveratrol pill that — unlike unregulated supplements on the market now — would be used as a drug and require Food and Drug Administration approval, said company chief executive officer Dr. Christoph Westphal. Federal approval is about five years away, he said.

Even would-be competitors are praising the study.

"It's a fairly spectacular result," said University of Wisconsin medical professor Dr. Richard Weindruch, who co-founded another biotech company that looks at the genetics of aging and drugs that could expand life spans. "People will go to McDonald's and afterwards they'll do super-sized resveratrol."

"This is fantastic," said Brown University molecular biology professor Stephen Helfand, who was the first reviewer for *Nature* and part of the team. "This is a historic landmark contribution."

Helfand said he won't be taking red wine extract supplements — but he has put his elderly mother on them. Mice, he said, are good initial test subjects for human drugs because their bodies function more similarly to humans than differently. However, he added that those differences can prove crucial.

Sinclair said he takes resveratrol supplements, but doesn't recommend it for others. Sinclair's mice took such high doses of resveratrol that it would be the equivalent of an adult drinking 100 bottles of wine daily.

given ultrahigh doses of the red wine extract resveratrol can get the good effects of cutting calories without having the pain of actually doing it.

"If we're right about this, it would mean you could have the benefit of restricting calories without having to feel hungry," Sinclair said. "It's the Holy Grail of aging research."

Resveratrol, produced when plants are under stress, are found in the skin of grapes and in other plants, including peanuts and some berries.

The resveratrol-treated 55 obese mice on a high-calorie diet (one scientist called it a "McDonald's diet") are not only about as healthy as normal mice, they are as agile and active on exercise equipment as their lean cousins, showing what can be considered a normal quality of life, higher than usual for obese mice, said study

Date: Thu, 28 Dec 2006 07:28:20 -1000

From: Paul Dalzell <Paul.Dalzell@noaa.gov>

To: George H. Balazs <gbalazs@hnlab.nmfs.hawaii.edu>

Cc: Irene Kinan <Irene.Kinan@noaa.gov>, Kitty Simonds <kitty.simonds@noaa.gov>

Subject: Re: Clarification- Re: Research needs for the Hawaii green turtle?
Request from George

George:

I'm currently on vacation in Vegas so dont have my head wrapped around work too much at the moment, more focussed on going to a show tonight and sqaundersing money in slot machines. However, I think Irene's comments are all pertinent. One issues I'd like to expand on is the ecosystem effects of a recovering turtle population in the Hawaiian Islands. Irene alluded to the folks in Kau and the loss of limu. My wife Nellie, who is from Papua New Guinea, comes from a group of islands (Mussau) where the entire population are Seventh Day Adventists, and hence dont eat turtles or even harvest the eggs. Consequently they have a large populations population of green turtles around their coasts. She tells me that traditional runs of rabbit fish (Siganidae) have been much reduced because the turtles compete with the rabbitfish for seagrass and other alagal resources. Obviously in Hawaii we dont have rabbitfish but there are clear similarities between Mussau and Kau. So I think consideration of these type of effects, where a recovering/recovered popualtion can have impacts on other elements of the marine ecosystem are essential. Hope this is helpful. regds

575
412
098

need
COLETTE

RE Effect on
PAUL DALZELL Ecosystem

188

KAIMUKI

Date: Tue, 16 May 2006 08:44:24 -0700
 From: Denise Parker <Denise.Parker@noaa.gov>
 To: George H. Balazs <gbalazs@honlab.nmfs.hawaii.edu>
 Subject: Re: Pictures I have on CD's from Costco downloaded from my digital camera media cards

You just need to copy the whole CD to the External drive (instructions below) - Depending on processor and memory of your computer it can take from 10 min - 30 min per CD (average around 15 min).. Note: you can be doing other projects while data is copying such as working on E-mail or another program such as Word or Excel etc..

Copying Instructions *16 May 2006 from Denise*

BACKUPS

1. Have CD in player and the External drive hooked up. 2. Then click on My Computer (this should show you all of your drives. e.g. C:, the Compact disk Drive, and your external drive)
3. Click on External drive and go to File-New-Folder and name the New Folder something related to the CD that you are copying.
4. Click the "Up" Folder (Folder on tool bar with an up arrow) which will take you back to all drives. - Click on your Compact disk drive. Select all files (Ctrl-A). Right click and select Copy.
5. Click the "Up" Folder and Click on External Drive. Right Click on New Folder and select Paste.

It usually will tell you how long the copy will take usually and show the files as they are copied over. Then when done you just need to click on where everything was Pasted (the New Folder) to do a check to make sure all was copied OK.

Te
 Routing
 321370707

VA

TEL:

sent

915.56

11/14/06

✓

BANK CARD SERVICES

P.O. BOX 94014

PALATINE, IL 60094-4014

need

✓

MR. RICHARD FREUDEN THAL
ENTERTAINMENT CONSTRUCTION SERVICES
3265 MUSTANG STREET
LAS VEGAS, NV 89108

546

662

620

By Jason Genegabus

jason@starbulletin.com

WITH THE OPENING of Hart and Huntington Tattoo Co. in Hawaii, Jared Kawashima is proving that not everything that happens in Vegas has to stay in Vegas.

A little more than a year after getting a tattoo at the original Las Vegas Strip shop made famous by the A&E Network reality show "Inked," the local attorney parlayed a casual conversation into the first of three new locations H&H plans to open this year.

"Like everything else in life, a lot of it is timing," Kawashima said last week. "We had to seize the opportunity."

Please see Tattoos, D4

JAN 2007 HSB



WAKAKO YAMAMOTO (left)

Age: 30

Hometown: Tokyo

Experience: Seven years

Specialty: Japanese

Most memorable tattoo: "I can't remember. I've tattooed Pride (Fighting Championship) fighter Phil Baroni."

More artists on D4

190

need PDF

Order: 370 Abstract ID: 1831 Type: Poster Subject: Population Biology and Monitoring

Greece

w/INSIDE COVER

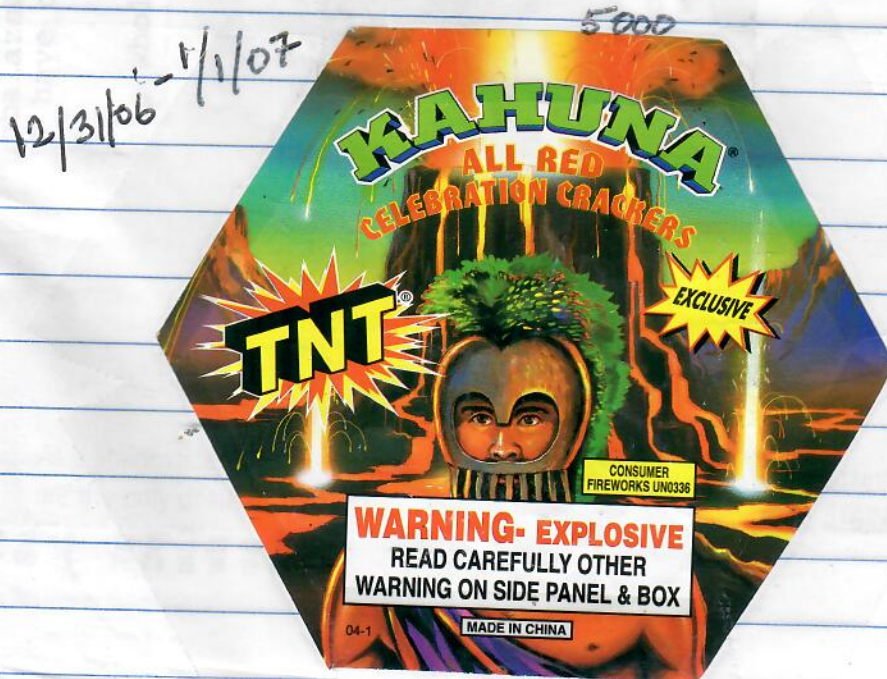
HATCHLING SEX RATIOS OF HAWAIIAN GREEN SEA TURTLES

Jennifer Estes¹, George Balazs², and Thane Wibbels¹

¹ University of Alabama at Birmingham, Birmingham, AL, USA

² National Marine Fisheries Service, Honolulu, Hawaii, USA

Green sea turtles in Hawaii represent an isolated population inhabiting the Hawaiian Archipelago. Green turtles possess temperature-dependent sex determination (TSD) which can result in a variety of hatchling sex ratios. Thus, hatchling sex ratios are of conservational and ecological interest. French Frigate Shoals (FFS), part of the Hawaiian Islands National Wildlife Refuge, is an atoll where approximately 90% of Hawaiian green nesting occurs. The study sites, East and Tern Islands, are two sandy islets that help comprise FFS. The purpose of this study was to predict hatchling sex ratios produced on East and Tern Islands based on both nest and beach temperature data from 1998-2004. Dataloggers were placed into nests and in beach locations at mid-nest depth (approximately 45 cm) to monitor temperatures. Sex ratio predictions were based on the average temperature during the middle third of incubation. Based on the nest temperature data, the results suggest an overall male-biased sex ratio. The sand dataloggers also recorded relatively cool temperatures and followed similar patterns. Additionally, a second technique was employed to verify the sex of hatchlings from the 2004 nesting season. Gonadal histology was used to identify the sex of hatchlings that were found dead in nests after all of the live hatchlings emerged. The kidneys and gonadal tissues were preserved and processed using standard paraffin histological procedures. Each gonad was then examined microscopically to determine if it was an ovary or a testis. Both male and female hatchlings were identified from FFS during 2004.



191

Reduce
TAPES

Pacific Islands Fisheries Science Center
Protected Species Division
PROJECTED FY-2007 First Quarter Travel

Dates of Travel	Purpose	Location	Travelers	Cost	Priority	Category
10/6/06-10/9/06	Conduct research	NCL ship	Balazs	\$540	High	O
10/13/06-10/24/06	Conduct research	Nagoya, Japan	Balazs	\$5,200	High	O
11/2006	Sea Turtle Assoc. of Japan Conference	Osaka, Japan	Balazs	\$5,000	Medium	SC
11/8/06	Conduct research - semi-annual tagging and assessment	Kahaluu, Hawaii	Balazs	\$500	Medium	O
12/6/06	Conduct research & present lecture	Molokai, Hawaii	Balazs	\$700	High	O
12/16/06-12/17/06	Conduct research - foraging pasture	Kiholo, Hawaii	Balazs	\$800	High	O
Winter 2-3 wks TBD 1 st qtr?	Cetacean field research	Kwajalein Atoll, Marshall Islands	Baker, other?	\$2,000- \$3,000	High	O

Priority: High, Medium or Low

Category Key:

IA = International Agreement
SC = Scientific Conference
CT = Commission Treaty
CM = Congressional Mandate
O = Other

MELICK AQUAFEED

TURTLE FINISHER

GUARANTEED ANALYSIS

Crude Protein.....(min.) 35%
 Crude Fat.....(min.) 4%
 Crude Fiber.....(max.) 5%
 Phosphorus(P).....(min.) 1%
 Ash.....(max.) 15%

Ingredients

Animal Protein Products, Plant Protein Products, Processed Grain By-Products, Fish Oil, Soy Lecithin, Calcium Lignin Sulfonate, Vitamin A Supplement, Vitamin D3 Supplement, Riboflavin Supplement, Niacin Supplement, Calcium Pantothenate, Vitamin B12 Supplement, Choline Chloride, d-Biotin, Thiamine Mononitrate, Pyridoxine Hydrochloride, Vitamin E Supplement, Menadione Sodium Bisulfite Complex (source of Vitamin K activity), Folic Acid, L-ascorbyl-2-Polyphosphate (source of Vitamin C), Ethoxyquin (A preservative), Potassium Iodate, Salt, Manganese Sulfate, Zinc Sulfate, Copper Sulfate, Sodium Selenite

CAUTION

Store in a dry, well ventilated area, free from rodents and insects. Do not use moldy or insect infested feed.

Manufactured By:
 Melick Aquafeed
 139 South First Street
 Catawissa, PA 17820
 1-800-358-6595

Net Wt. 40 lbs.

7.0MM

108

See page 195

FOR ADDRESS

MELICK AQUAFEED

TURTLE DEVELOPER/STARTER

PROTEIN 40%
 FAT 10%
 FIBER 5%
 PHOSPHORUS 1%
 ASH 15%

3.0MM

192

Milestone Title	Planned Completion Date	Milestone Description	Milestone Contact Information
<p>Determine number of green turtles nesting at East Island, French Frigate Shoals, during the 2007 nesting season</p>	<p>8/15/2007</p>	<p>A quantitative basis is necessary for monitoring the abundance of the Hawaiian green turtle population in support of the Recovery Plan for U.S. Pacific Populations of the Green Turtle. The number of green turtles nesting at East Island, French Frigate Shoals, in the Northwestern Hawaiian Islands has been estimated annually since 1973. The estimate is based on partial-season survey of nesting activity conducted collaboratively by the PIFSC and the U.S. Fish and Wildlife Service. Survey statistics are extrapolated by the PIFSC to estimate the total number of nesting females during the survey year. Extrapolation procedures are based on statistical methods developed by the PIFSC during a series of saturation surveys conducted from 1988-92. The estimates of nesting activity at East Island are used to provide an index of abundance for the Hawaiian green turtle population and to monitor population trends for management purposes including recovery status.</p>	<p>George Balazs 983-5733 and Jerry Weitherall 983-5396</p>
<p>Publish a co-authored manuscript in a peer-reviewed journal on the age and growth of olive ridley sea turtles in pelagic habitat of the North Pacific Ocean</p>	<p>12/15/2008</p>	<p>Research results will be published in partnership with Drs. George Zug and Milani Chaloupka providing the skeletochronological analysis for age estimates of North Pacific olive ridleys caught incidentally in pelagic longline fisheries. Estimates of the median age at sexual maturity have been determined for the first time for this species. These data are significant for use in simulation models needed for sound scientific management of both pelagic commercial fisheries and the conservation and recovery of Pacific populations of olive ridleys protected under the U.S. Endangered Species Act.</p>	<p>George Balazs 983-5733</p>
<p>Prepare and submit a co-authored manuscript for peer-reviewed journal publication on the status of the molecular ecology of the green turtle in the Hawaiian Archipelago</p>	<p>5/15/2007</p>	<p>Working in partnership, George Balazs and Peter Dutton will prepare a manuscript for journal submission detailing the results of 20 years of mtDNA sample collection and analysis of green turtles in the Hawaiian Islands. A robust long term data set results from turtles sampled as foraging pasture immatures, strandings of all size classes, and reproductively mature females at the breeding rookery of French Frigate Shoals. Evidence has been assembled to support the hypothesis that Hawaiian green turtles qualify as a spatially disjunct metapopulation that can be considered a single genetic stock for management purposes. This knowledge is essential for accurately evaluating the current biological status and progress toward recovery of Hawaiian green turtles listed under the U.S. Endangered Species Act.</p>	<p>George Balazs 983-5733</p>
<p>Prepare a manuscript for journal publication detailing the epidemic outbreak, rise, and decline of fibropapilloma tumor disease prevalence in the resident green turtle foraging population at Palau, Molokai in the Hawaiian Islands</p>	<p>7/15/2007</p>	<p>During the mid-1980's fibropapilloma tumor disease was first detected in the large resident aggregation of foraging green turtles at Palau, Molokai in the Hawaiian Islands. Subsequent surveys have been conducted annually for 20 years thereby resulting in a robust data set highly relevant to sea turtle epidemiology. In partnership with Drs. Milani Chaloupka and Thierry Work, an analysis will be conducted and a manuscript prepared for journal submission to better understand factors causing this disease outbreak and why it has significantly declined in recent years.</p>	<p>George Balazs 983-5733</p>
<p>Initiation, implementation and conduction of an international cooperative research project on the pelagic ecology of South Pacific loggerhead turtles</p>	<p>8/15/2007</p>	<p>In partnership with Dr. Jeffrey Polovina (PIFSC Ecosystems and Oceanography Division) and prominent scientists in New Caledonia, a major research project will be established to investigate the pelagic movements and foraging ecology of Southern Hemisphere loggerhead turtles. The goal of this 2-3 year study is to determine life history aspects relevant to commercial longline and other high-seas commercial fisheries. Loggerhead sea turtles of the South Pacific are an endangered and declining species. Knowledge obtained from this project is essential to the formulation of sound management strategies for both commercial fisheries and sea turtle conservation and recovery.</p>	<p>George Balazs 983-5733 and Jeff Polovina 983-5390</p>

George Balazs
983-5733

193

FY06

D8LAM26-PMT (Marine Turtle Research) - \$521.0K

Salary (11XX) - \$137.8K
 Benefits (12XX) - \$67.8K
 Travel (21XX) - \$40.8K
 Transportation (22XX) - \$5.6K
 Rental/Communication (23XX) - \$56.1K
 Contracts (25XX) - \$74.4K
 Supplies (26XX) - \$126.2K
 Equipment (31XX) - \$12.3K

D8LAM26-PFP (Fibropapilloma Research) - \$330.0K

Travel (21XX) - \$0.5K
 Printing (24XX) - \$0.4K
 Contracts (25XX) - \$77.7K
 Supplies (26XX) - \$1.2K
 Equipment (31XX) - \$0.2K
 Grants (41XX) - \$250.0K

The conduction of a comprehensive sea turtle stranding and salvage research program in the Hawaiian Islands provides a valuable quantitative basis for estimating anthropogenic as well as natural causes of strandings and mortality. Analysis of data collected from 1982 through 2003 produced useful insights on sea turtle interactions and associated trends with coastal fishing gear, including nets and fishing line entanglement. An updating and summarization of this dataset will be carried out with the addition of cases compiled during 2004 through June of 2007.

8/31/2007

Pacific Islands Fisheries Science Center
 FY-2007 Foreign Travel

Dates of Travel	Purpose	Location	Travelers	Cost	Priority	Category
10/13/06-10/24/06	Conduct Research	Nagoya, Japan	George Balazs	\$5000	High	O
November 2006	Sea Turtle Assoc. of Japan Conference	Osaka, Japan	George Balazs	\$5000	Medium	SC
February 2007	Conduct Research	New Caledonia	George Balazs	\$5000	High	O
April 2007	Conduct Research	Ogasawara, Japan	George Balazs	\$5000	High	O
August 2007	Conduct Research	New Caledonia	George Balazs	\$5000	High	O

Priority: High, Medium or Low

Category Key:

IA = International Agreement
 SC = Scientific Conference
 CT = Commission/Treaty
 CM = Congressional Mandate
 O = Other

Collect, computerize by GPS location, and summarize trends of marine turtle strandings in the Hawaiian Islands 2004-June 2007 by species, size-class, sex, and cause of stranding determined by necropsy

Kiyoshige Kobayashi
 4-13-1, Kouei, Minato-ku,
 Nagoya 455-0015 Japan

94

Sea turtle biologist wins national recognition

The National Wildlife Federation has honored turtle biologist George Balazs with its National Conservation Achievement Award for exemplary leadership in protecting wildlife and natural resources.

Balazs has devoted his 34-



George Balazs: He has spent his career saving the Hawaiian green sea turtle

year career to recovery of the Hawaiian green sea turtle, which he began studying in 1971 while working at the University of Hawaii's Institute for Marine Biology.

In 1973 he began an annual count of turtles nesting in the Northwestern Hawaiian Islands that was instrumental in getting the species added to the Endangered Species List in 1978.

Now a protected-species biologist and team leader for the National Oceanic and Atmospheric Administration's Fisheries Service, Balazs has become a world leader in sea turtle biology, publishing widely and serving as a scientific adviser for a number of turtle conservation groups.

Balazs received the award March 31 at the annual meeting of the National Wildlife Federation in Washington.

Year	JAW Nesters	Total No.	New Tag	Prev Tag
1973	67	4	4	0
1974	105	8	7	1
1975	120	104	104	0
1976	39	24	22	2
1977	82	39	37	2
1978	101	52	48	4
1979	77	53	41	12
1980	52	51	32	19
1981	149	119	78	41
1982	130	119	75	44
1983	35	30	15	15
1984	199	129	68	61
1985	162	114	70	44
1986	69	61	44	17
1987	143	86	62	24
1988	180	187	112	75
1989	294	263	164	99
1990	150	150	100	50
1991	107	108	58	50
1992	384	297	117	180
1993	191	173	83	90
1994	132	127	49	78
1995	252	238	104	134
1996	367	348	165	183
1997	504	419	199	220
1998	64	62	17	45
1999	209	192	75	117
2000	353	335	215	120
2001	314	296	124	172
2002	467	441	145	266
2003	219	217	94	123
2004	548	524	228	296
2005	344	-	-	-
TOTALS	6609	5370	2756	2584

EAST FFS

Island	Newly	Recapture	Total
Oahu	3718	2194	5912
Hawaii	3464	1664	5128
Molokai	1866	352	2218
Lanai	235	46	281
Kauai	100	60	160
Maui	36	189	225
TOTAL	9419	4505	13924

2756 + 2584 = 5370

SLP
Adult cm

Practice by Irene NORZIA-Humbert

MAY 31, 06

195

4454484C23



MT = ?

470G5C507D



MT "G"

445467345E



MT "U"

424F2E1705



MT "H"

Washing Machine Yucca - 29" wide, 25.5" deep, 36" high + BACKLIP
to facet 7.5" (8" dk)

Date: Tue, 03 Oct 2006 07:20:2
From: Shawn Murakawa <Shawn.Mu
To: George H. Balazs <gbalazs@
Subject: SLP Adult Turtles

BEHR
PREMIUM PLUS EXT FLAT
BISON BROWN (780B-7)
DEEP BASE (4300)
GALLON

COLORANT	OZ	48	96
D THALO GREEN	2	32	0
E THALO BLUE	5	8	0
F RED OXIDE	3	32	0

Phone #: (760) 324-0100 RANCHO MIRAGE
9/24/06 18:35 - DKU - 0667

Female	Male	
B		A
E		C
G		H
K(iana)	J	
L		T
M	W	
N(ui)		P
		U

N=7 N=8

NOT RETURNABLE
BEHR
PREMIUM PLUS EXT SEMI-GL
(MANUAL)
PASTEL BASE (5560)
GALLON

COLORANT	OZ	48	96
AX PERM YELLOW	5	32	0
T MEDIUM YELL	1	20	0

Phone #: (760) 324-0100 RANCHO MIRAGE
9/24/06 18:35 - DKU - 0667

Yucca kitchen AC =
~~18 3/4" TALL~~ ~~28 1/4" wide~~
18 1/4" 26 1/2" CARD housing!
See page 191
570-356-7161

800-358-6595

Melick AQUA Feed INC Jofu
139 South 1st Street Vendetta
CATAWISSA, PA 17820

(196)

YUCCA Aug 16 21, 2006 (GCB from SD)

2006
June/July Honolulu
Honolulu Av

NATURE

Turtle Diaries

As summer nears and the winter surf on Kaua'i's North Shore settles down, scuba divers head back into the ocean, particularly around Makua Beach, where the surf's erosion of lava tubes has created fantastic formations of arches, caverns and crevices—an area known as Tunnels. It's not just divers who like the spot—here, the endangered green sea turtle eats and sleeps. The scuba diving tour operator, **Sacred Seas Scuba**, monitors the turtles' health and welfare continually on behalf of the National Marine Fisheries Service, and it turns to its clients to assist in the surveys. The company takes a maximum of only four divers and provides an in-depth pre-dive briefing that includes a review of anticipated marine life encounters and a topographical map of the underwater dive site, illustrating the dive route. In addition to

120

Thursday, March 8, 2007

The Honolulu Advertiser

GILL NET REGULATIONS

- Total ban on the use of lay gill nets on Maui.
- Area bans for O'ahu: From Portlock Point to Keahi Point at the west side of the Pearl Harbor channel; From Mōkapu Peninsula to the northern end of Bellows Air Force Base; In Kāne'ohe Bay between the ship channels, including Ahu O Laka.
- Existing rules retained on West Hawai'i.
- No bans on Moloka'i, Lāna'i, Kaua'i or Ni'ihau, but these areas are subject to statewide regulations: Gill nets may not be left in the

water more than four hours any one day, and may not be set at night.

Gill nets may not be left unattended for more than a half hour, and must be inspected every two hours. Undersized, illegal or unmarked catch removed. No more than a single 125-foot length may be set, and each must be marked with buoy.

Lay gill nets may not be set in streams or at stream mouths.

- All nets must be registered with the Department of Land and Natural Resources. Each net must have at least four identification tags.

ON THE WEB

Detailed net regulations: www.hawaii.gov/dlnr/s/ch75.pdf



PANDA TRAVEL
TOUR THE WORLD

SAIFOLAU BROWN
LEAD AGENT

Panda Building
1017 Kapahulu Avenue
Honolulu, Hawaii 96816

T 808 738 3834
F 808 732 4136

sbrown@panda-group.com
www.pandaonline.com

Tissue samples collected for contaminant analysis will be stored in the NOAA-National Sea Turtle Tissue and DNA Archive at the SWFSC and analyzed at:

Analytical Laboratory
Texas A&M University at Galveston
2402 Perthuis Drive
LaMarque, Texas 77568 USA

AT&T
CAPTAIN

197

FTS 2001 1-800-999-9000

017-241-2343-5961



Date: Fri, 02 Apr 2004 22:51:57 -0500
From: K Schell <kaysemail@angelfire.com>
To: George H. Balazs <gbalazs@honlab.nmfs.hawaii.edu>
Subject: History

Richie's
DAUGHTER

Hi, I was going through some web sites and found one that I thought you might enjoy. I don't know if you have any of your moms family tree. If you go to rootsweb.com and put your fathers name in. A lot of sites will appear that you can go into for information (and it's all free). Under world connect it shows your father married to Emily B. Bauser. The information is from the Tegan/Schotts family tree. It was submitted by Beckey Schotts. It gives the information about your mothers parents. Just click on the names and you will even have more information. You might already know everything, but just in case you don't, I thought you might like to have it. Have fun...Kay

90-74-41



HAPPY HONU GIFTS

Port Allen Marina Center
4353 Waialo Road, Eleele, Hawaii

335-3211

CELL PHONE 639-3627

OWNER - DARYL MEDEIROS

Irene's DAUGHTER -

Beverly K NESHTEL

Address:

- 35mm slides
- 35mm PRINTS
- DIGITAL stills
- Digital Video
- 8mm Film
- VHF Video
- 16mm FILM

UCHIDA

my home (Fax No. 81-52-876-6842)

(Tel. No. 81-52-876-4392).

80/2-23400

com

07 ACCOUNT CODE E8LAM26-PMT *

198

128 Fedex 3291-2430-4

SEAMORE DOWNLOAD LUNG

06 ACCOUNT CODE = D8LAM26PMT

Sea Turtles in Trouble?
Stranded Ashore Sick or Injured?
Report cases to NOAA/NMFS
983-5730
Authorized Federal Agency
See <http://www.turtles.org/nmfs>
or Request Literature 983-5730

1-800
421-0600

*800-348-888
4653

719 CTM2
800-237-9971

CO = 877-311-0055
KF185678

HA: Tel = 838-0611
115-219-970

ALOHA
xGB 101-0151-6806
PIN 8923 ALOHA

xLB 101-0119-6674
PIN 0920 ALOHA

* PAUL 201-0226-0323
PIN 2768 ALOHA

DARA 201-0226-404
PIN 4857 ALOHA

LB UA
0316859
7710
(GAME)

DETA =
216857441
(This Book)

LIST OF YUCCA
TRIPS: June 1-5, 05
Feb 20-24, 05

AUG 13-18, 05
DEC 05
APRIL 06

Fence MAY 2006
PAUL 185 803 972

PAUL - Hawaiian
Miles = 185 803
972
53495667

TYPES of IMAGERY
B&W 35 mm prints
35 mm slides
35 mm prints
8 mm film
VHF video
16 mm film -
Digital prints
Digital Video

Pacific Islands Regional
OBSERVATION
PROGRAM

Manami Yamaguchi
Ogsawara Marine Center
Byobudani Chichi-jima
Ogsawara, Tokyo 100-2101
JAPAN
TEL: +81-4998-2-2830
FAX: +81-4998-2-3258
mana@bonin-ocean.net
<http://bonin-ocean.net>

Jeff Polovina

west fence AUG 12-18, 2007
Playglass Oct 17-24, 2007

Ray Clarke = GATE
NOAA FISHERIES Pacific Islands Region International
Program

Yucca
AUG 16-21, 2007

Lin Haines
HAWAIIAN Airlines
PAUL 163 979 468

It looks like they have taken their hub offline out at FFS. We can do the testing anytime today that you have some free time. I will be available. If you'd like to download the newest build of the software you can do so by <http://www.seemorewildlife.com/latest/build/RemoteMPEG.exe> and placing it in your C:\SWS directory. This file should replace the RemoteMPEG.exe that you currently have on your system. Just give me a call when/if you can do the testing today.

like Betty
OK

YUCCA - JAN 19-25 07
JUNE 2-8 07

METRIC U

When You Know:

Length and

- inches
- feet
- yards
- miles
- millimeters
- centimeters
- meters
- meters
- kilometers

Surface or Area

- square feet
- square yards
- square miles
- square kilometers
- hectares

Volume and Capacity

- pints (U.S.)
- quarts (U.S.)
- gallons (U.S.)
- liters
- liters
- liters

Weight and Mass

ounces	28.3495	grams
pounds	.4536	kilograms
short tons	.9072	metric tons
kilograms	2.2046	pounds
metric tons	1.1023	short tons

Temperature

To convert Fahrenheit (F°) to Celsius (C°):
subtract 32, multiply by 5, and then divide by 9.

To convert Celsius (C°) to Fahrenheit (F°):
multiply by 9, divide by 5, and then add 32.

PUNCTUATION

Use a period at the end of a declarative sentence.

EXAMPLE: We went to see the Tulip Festival in Lynden.

Also use a period at the end of an imperative sentence that does not express strong emotion.

EXAMPLE: Open the door.

Use a question mark after an interrogative sentence.

EXAMPLE: Where will we go for our field trip?

Use an exclamation mark after a sentence that expresses surprise or strong emotion.

EXAMPLE: Rodney looks just great!

Use a comma to separate words and phrases in a series.

EXAMPLE: Al Smith has goats, some cows, and a pair of llamas.

SIGHTING INFORMATION TURTLE AND SEAL

Animal sighted (circle): Turtle Seal
 Number of animals: 1 Type, if known: GREEN
 Date: _____ Observer: C.W. SMITH
 Time: 3PM Address & phone (optional): 111 W. HOOKAWA LANE HILO, HI 96720 (961-2069)
 Location: ONE KAWA KAWA BEACH PARK
 Observed from (circle): shore boat (name: _____),
 while skin or SCUBA diving (off surface) or at _____ feet deep).
 Estimated size (length): 4 FT

Comments: (such as color pattern; injuries; scar patterns; tumors; whether flipper tags are present (Y/N); color and number of the tag(s); bleach marks (number/letter); behavior; and weather)

300-400 LBS NO TAG OR TUMORS PRESENT CLEAR, CALM WEATHER TURTLE WAS FEEDING IN SURF ZONE. BIGGEST I'VE EVER SEEN IN HAWAII

Seals and sea turtles are protected under Federal and State law.

DO NOT DISTURB.

The Orion Light uses Two CR2032 Lithium Batteries
 To order replacement batteries call toll free.

877-269-8490

Also check out the complete line of Cyclops lighting products at:

www.cyclopsolutions.com

8	8	16	24	32	40	48	56	64	72	80	88	96
9	9	18	27	36	45	54	63	72	81	90	99	108
10	10	20	30	40	50	60	70	80	90	100	110	120
11	11	22	33	44	55	66	77	88	99	110	120	132
12	12	24	36	48	60	72	84	96	108	120	132	144

To: 901 / 98 - 102 Maroubra Road,

Maroubra, Sydney, NSW 2035,

Australia.

Chiu, Hsiang-Chun

TEL: 61-411-475-119

Use double quotation marks around a direct quotation.

EXAMPLE: He said, "I am very happy."

Use an apostrophe in a contraction, as in it's (for it is), or to show possession, as in Dirk's dog.

EXAMPLE: just possible
 change change

When a verb ends in a change the verb
 before adding ing

EXAMPLE: to try try

8098



(808)
286-4359
286-4377

Jia Lu, Geoffrey Bonnycastle
518 Coyle Avenue
Arcadia, CA 91006
626-446-6258 Office
626-353-3592 Mobile
626-821-5361 Home
gbonny@alios.net
gbonnycastle@gmail.com

DAILY LOG



00539121
AGT JAPAN
NTT 00348087
JT 00411124

0 26229 46012 8
Item No. 46012
Norcont, Inc.
Norcross, GA 3007
www.norcontinc.com
Made in Brazil