

BALAZS  
2008

2 of 3

GEORGE BALAZS  
Marine Turtle Research  
NOAA NMFS PIFSC  
2570 Dole Street  
Honolulu, Hawaii 96822

GEORGE BALAZS

4327

(808) 286-2899

(808) 395-6409

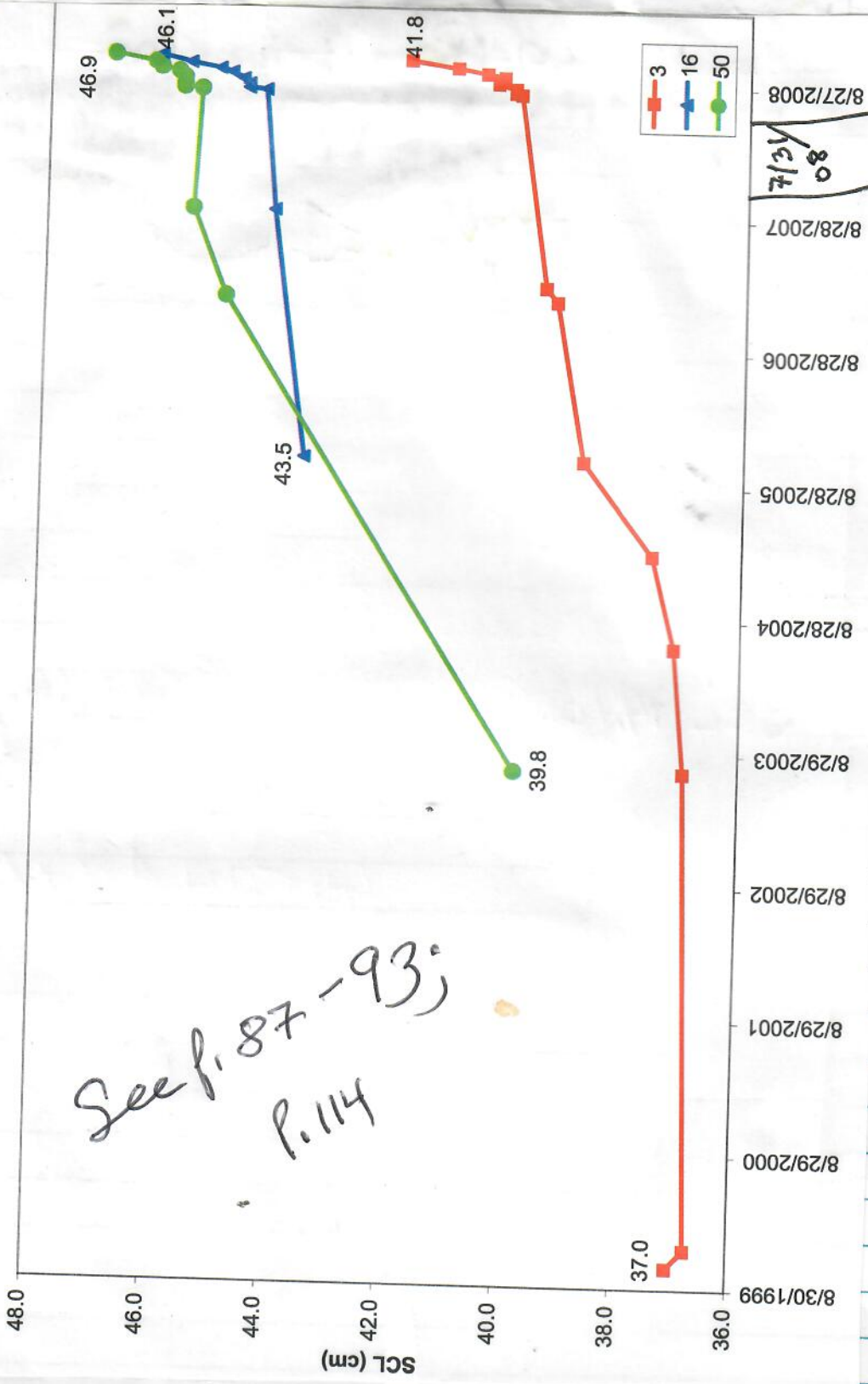
APRIL 14, 2008 TO

DECEMBER 31, 2008

gbalazs@honlab.nmfs.hawaii.edu

gbalazs@honlab.nmfs  
edu

Growth History for 3 Juvenile Hawaiian Green Turtles from Kiholo Bay Undergoing Nutritional Rehabilitation at the PIFSC KRF



See p. 87-93; p. 114

88

8/27/08

17 July on Thursday - Skippy

18 July on Friday

8/8/08

XEROX for MAUI BOOK needs bus ticket rate

Age 48  
page 9

July 16, 2008 Wednesday  
HA 4:50 pm cancelled 5:30 pm  
to Maui arrive 6 PM - Bag didn't arrive  
Lecture at Sanctuary ~ 6:40 PM starts  
~ 9:15 pm end. Drove to Hono Kona  
overnight w/ Peter and URSULA. DAY TIME

17 July 08 Thursday TO Airport picked up luggage  
TO WAILEHU and WAIIHEE  
- Skipped phone call - SUPER SUCKER WORKING KILLER  
walked beach no sign of tracks/nesting  
Didn't go to WAIIHEE. Flat tire Wendy's.  
TO Sanctuary - dropped off reports  
- TO 5690 / 5th nesting site (night of 7/15/08)

18 JULY 08 FRIDAY MORNING - Dutton discussion about  
Friday's genetics paper (Proofs) w/ workshop.  
Peter email from Keith Leber had mailed  
The Book of Hawaii advance published copy.  
Received ~ 12:30 pm. Photos of the 3 of us  
TO FLEMING, HONOLUA BAY, PINEAPPLE HILL RESTAURANT  
of site Fleming's HOME

7/17/08 TO MOC - PIT Tagged, weighed,  
measured 6 Turtles.  
voice from Cheryl KING - been on  
MAIL KATHOLAWA 2 week awaiting  
hatch of g. to nest.

DONNA BROWN cliff front home.  
S-TURN beach  
7/18/08 HA 12:35 TO Hono Kona ~ 6:55 pm

18

WANT BOOK  
WANT BOOK

FRANK GIARETTO (NOAA LE)  
(808) 781-6832

7/21 newspapers  
Eloise 239-7618  
Rose - 529-4756

7/23/88 Tebeon Message  
Wanna @ Scoville Lives on Paprika Rd.

637-3449 "Saves turtles on a regular basis"  
Pledges Arrest & conviction

Runs w/ 3rd World Groups

7/23 (702) 516 4776 Jennifer South

1053 AM  
2:50 PM MDC-Kacia Joy

Thurs. 7/28 couple presentations during the day 669-8915

Friday 7/8/08

7/19/08 Sat.

7/22

7/23 Wed

Thursday 7/28

Monday

Friday  
7/18/08

6pm call from Don Hancock re: Large Turtle 7/16/08 ANINI taken to Dr. David HAYS (Marine Mammals) PITCH on head - to his x/c office over and end to wash for improvement. Decision to be made on Monday, Don said old tags as follows:

LH 821-~~X~~ (XT)  
RH 879-~~X~~ (XT)

7/19/08  
Sat.

Turtle found by volunteers at L20 = PIT TAG LH  
Landed 9 AM buried in Sand.

7/22 Tues. JW gb etc "necropsy" of parts.

7/23/08 PUNALUU  
Wednesday LANGOLIN FILMS N=

Jeff Semuff Arrived PM 7/27 Sunday  
Depart LATE PM 7/30 Wednesday  
N=11 (3 from the ITOIO MOTOTREYS)

Monday 7/28 KAWAINUI - Right of Way  
Monday (Michael W. Perry) Brenda David, ERIC  
Brenda Pearson Jeff Semuff, Alicia Bore

WELCOME  
**E KOMO MAI**

Welcome to Kualoa Ranch, a place of extraordinary beauty, preserved through the stewardship of the Morgan family, descendants of Dr. Gerrit P. Judd who acquired the initial ranch lands from King Kamehameha III in 1850.

Kualoa Ranch is Oahu's largest and oldest cattle ranch and the site of its first sugar mill. The land is unique in that it covers three of the ancient Hawaiian land divisions known as ahupua'a, each with distinctly different characteristics. The ranch terrain varies from dense rainforest to broad open valleys and from beautiful white sand beaches to awesome verdant cliff faces. It is truly a paradise for outdoor recreation with many places accessible only by horseback, on an all terrain vehicle or by hiking.

Ancient Hawaiians considered Kualoa one of the most sacred places on Oahu. It was a residence of kings, a place of refuge and sanctuary - a pu'uhonua - and a training ground for royalty who were instructed at Kualoa in the arts of war, history and social traditions.

If the Ranch's 4,000 acres look familiar, that's because Kualoa Ranch has been the site of many television shows and Hollywood films such as *Jurassic Park*, *Windtalkers*, *Pearl Harbor*, *Godzilla*, *Tears of the Sun* and *50 First Dates*. TV shows include *Hawaii Five-0*, *Magnum P.I.* and most recently, the hit show *LOST*.

Whether you choose to ride a horse, drive an ATV, take a ranch tour or just relax with a snack in our new visitor center, we hope you enjoy your visit!



**Kualoa Ranch**  
Hawaii

**RESERVATIONS: 808-237-7321**

Email: [activityinfo@kualoaranch.com](mailto:activityinfo@kualoaranch.com)

Website: [www.kualoa.com](http://www.kualoa.com)

Handwritten notes on lined paper, including the words "KUALOA RANCH" and "RESERVATIONS" written upside down.

Denise - pelagic greens  
Diet paper - Need - Twin offer in Hawaii

500, 90KTS  
Elevation

Baja

75 miles off shore Baja  
up to 180 miles

7/30/08  
Wednesday

Jeff Semhoff 10 AM TALK - Polovina, Havel  
kobayashi, Melome +  
hunts bills spray etc  
300 nests a year

received Salvador - Carlos HASBUN  
USFID nest in estuary "

Jeff's 1st slide - Michcan nesting green w/ barnacles  
Shows POSTERIOR INDENT. Not on "PACIFIC COAST"

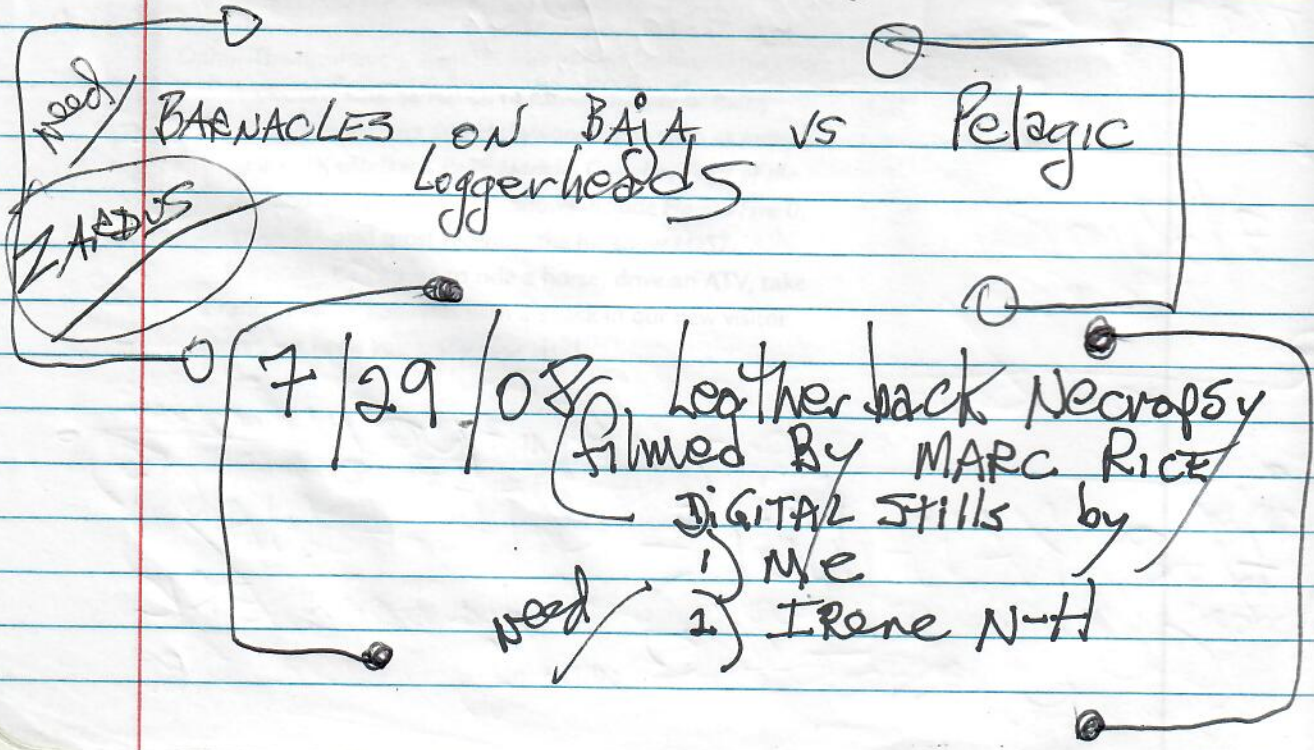
4-day = 'distance workshop' N. California

First years

21,000 loggerheads - Baja

2005 2006 2007

95% 15,344 - 30,500 thousand





HATASE to JL

Isotopic Inventory

87

7/31/08  
Thursday

KHLO-3  
Bob Morris & GB

BAYA Baskets  
on ec?

3 turtles exceedingly poor growth

Shipped to Honolulu 8-1-08 Friday  
up by Regina to KRF IDs =

CH	PITS	4150576C	03	Picked	TW
				23	3.8
		4351480C	50	29	3.8
		4526277B	16	20	3.4

Blood Drawn by TW 8/1/08

See p. 80

88

DC Necropsy

Sea Tu

Species Code

DC

- CC Loggerhead
- CM Green
- DC Leatherback
- EI Hawksbill
- LV Olive Ridley
- UH Unid. Hard Shell
- UT Unidentified

Capture

Date/Time Day Month Year Hour Minute  
 20 JUL 2006 20 25

Latitude Deg. Decimal Min. NS  
 14 22.2 N

Landed  ✓

Longitude Deg. Decimal Min. EW  
 160 15.9 W

Tags Present?  Y Yes  
 N No  
 U Unk.

Measurements

Round to the nearest half cm.

Carapace Length (curved) 69.0 cm

Carapace Width (curved) 52.0 cm

Plastron Length 55.0 cm

Tail Length 4.5 cm

Carapace Length (straight) 64.5 cm

Carapace Width (straight) 40.0 cm

SPACES  
 photos sent to MAEC for U

Date:

From:

To: G

T

Subje

TW bl

"03"

"50"

"16"

2.9)

# KITULO

STUDENT HELPERS Thursday July 31 2008

BRACES →

- ✓ Kimi Cantynte
- ✓ Nani Welch Kellingamalu
- ✓ Ryan Fujioka
- ✓ Meimei Nakahara
- ✓ Tyler Sakurai HPS Graduated Summer 2008

Photos sent to COMSEC FOR UPRA

IM TO Distribute

Date: Tue, 5 Aug 2008 09:56:20 -1000  
 From: Robert Morris <morrisr005@hawaii.rr.com>  
 To: George H. Balazs <gbalazs@honlab.nmfs.hawaii.edu>, Thierry Work <thierry\_work@usgs.gov>  
 Subject: blood

TW blood

Idexx lab

"03" PCV (23)	(31)
TP 3.8	5.0 (ALBUMIN 1.0, GLOBULIN 4.0)
"50" PCV (29)	(33)
TP 3.8	5.0 (ALBUMIN 1.1, GLOBULIN 3.9)
"16" PCV (20)	(23)
TP 3.4	4.0 ALBUMIN 1.1, GLOBULIN
2.9)	

90

Kiholo-3

N=16  
(1 new)

Kiholo 7/31/08

location of capture: Kiholo      method of capture: Awa'i-Nex capture  
 Data Recorder: Tiler S      Date: 7/31/08

plastron: 33.4 cm      tail length: 8 cm      cloaca: 5.5 cm  
 axial body depth:      lateral body depth:      head width:      cm.  
 straight carapace length: 39.9 cm      straight carapace width: 32.8 cm  
 straight carapace length - NOTCH: 39.7 cm      D.B.      V.B.      flipper width:      cm.  
 curved carapace length: 42.5 cm      curved carapace width: 38.0 cm      weight: 23.0 lbs  
 PPS: YES (NO)      SEX (male, female, undeter):      tumor score:      oral trms ext: Y/N

mucination code:      tag location:      new tags:      #1  
 old tags: #1  
 L1: 4150576003  
 R1: 410111192F

samples collected: KRF Blood drawn by Sr. Morris 8/1/08 new MT 03  
 Turtle to Honolulu KRF 8/1/08

PCV TO 38

Tag Information:

Tag Number	Date	Tag Type	Tag Position
410111192F	10/26/1999	PIT	RHF
4150576003	10/26/1999	PIT	LHF

L1 17.1  
 2 15.4  
 3 11.3

Date	Type of Encounter	Location:	Tumor Rank:	Nesting Act:	Straight Carapace	Weight
10/26/1999	Near Shore	Hawaii, Kiholo, Awa'i	0	-	37.0	16.0
12/15/1999	Near Shore	Hawaii, Kiholo, Awa'i	0	-	36.7	16.0
7/9/2003	Near Shore	Hawaii, Kiholo, Awa'i/Sluice/Bay	0	-	36.9	-
6/15/2004	Near Shore	Hawaii, Kiholo, Awa'i	0	-	37.1	17.7
2/23/2005	Near Shore	Hawaii, Kiholo, Shallow water	0	-	37.5	20.0
11/2/2005	Near Shore	Hawaii, Kiholo, Awa'i Pond	0	-	38.7	21.4
1/12/2007	Near Shore	Hawaii, Kiholo, Internal Pond	0	-	39.2	20.0
2/20/2007	Near Shore	Hawaii, Kiholo, Bay	0	-	39.4	21.2

Kiholo-3

91

MT 50

location of capture: Kiholo  
 method of capture:   
 Data Recorder: Tyler S Date: 7/31/08

plastron: 36.6 cm. tail length: 51.5 cm. cloaca: 5.5 cm.  
 axial body depth: cm. lateral body depth: cm.  
 straight carapace length: 45.4 cm. straight carapace width: 55.8 cm. head width: cm.  
 straight carapace length - NOTCH: 45.3 cm. D.B. V.B. flipper width: cm.  
 curved carapace length: 44.0 cm. curved carapace width: 43.0 cm. weight: 29 lbs.  
 PPS: YES/NO (NO checked) SEX (male, female, undeter): tumor score: oral tumors ext.: Y/N (N checked)

emaciation code:   
 tag location: old tags #2  
 LH: 4351480C60 = #2  
 RH: 470A451F4B  
 tag location: new tags

samples collected  
 Blood was drawn by Dr. Moore  
 Labeled OC50 TO HOWARD KRF 8/1/08  
 New MT50

observations / remarks #2  
 Blood drawn OC50 TW Rev = 29 TS = 38  
 L1 13.1  
 L2 15.9  
 L3 13.0  
 KRF

Tag Information:				Historical Inform		Orical Inform	
Tag Number	Date	Tag Type	Tag Position				
4351480C50	7/9/2003	PIT	LHF				
470A451F4B	1/12/2007	PIT	RHF				

Date	Type of Encounter	Location:	Tumor Rank:	Nesting Act:	Weight	Straight Carapace
7/9/2003	Near Shore		0	-	---	36.6
1/12/2007	Near Shore		0	-	26.9	44.3
9/6/2007	Near Shore		0	-	27.6	45.5

92

Kiholo-3

MT 16

7-31-08

location of capture: Kiholo      method of capture: seep net - pond

Data Recorder: Tyler S      Date: 7/31/08

plastron: 35.1 cm      tail length: 9 cm      cloaca: 5.5 cm

axial body depth:      cm      lateral body depth:      cm

straight carapace length: 44.3 cm      straight carapace width: 36.0 cm      head width:      cm

straight carapace length - NOTCH: 43.9 cm      D.B.       V.B.       flipper width:      cm

curved carapace length: 47.5 cm      curved carapace width: 42.5 cm      weight: 25.5 lb

PPS: YES/NO       SEX (male, female, undeter):       tumor score:       oral trms ext: Y/N

emaciation code:

tag location	old tags	tag location	new tags
LH	452627 7B(6)		
RH	44144 50B41		

samples collected: Blood drawn by Dr. Morris      Labials 7B16      TO Honolulu      KRF new 8/1/08 MT 16

observations / remarks: KRF TW PCV 20 TS 3.4      L1 - 17.5      L2 - 15.4      L3 - 12.3

Tag Information: #5

Tag Number	Date	Tag Type	Tag Position
4414450B41	11/2/2005	PIT	RHF
4526277E16	11/2/2005	PIT	LHF

Date	Type of Encounter	Location:	Tumor Rank:	Nesting Act:	Straight Carapace	Weight
11/2/2005	Near Shore	Hawaii, Kiholo, Awai Pond	0	-	43.5	23.5
9/6/2007	Near Shore	Hawaii, Kiholo, Sluice	0	-	44.1	24.4

3/4/08 Monday

8/15/ Friday

8/15/ Friday

8/15/ Friday

Kittolo-3

(93)

8/4/08 ALL 3 kittolo weighed Measured and photoed.  
Monday

Being fed 13 squid (1.5 lbs) every other day.

8/15/08 ~ 290 body weight

MT03	23.0 lbs	20.5 lbs
MT16	25.5 lbs	22.5 lbs
MT50	29.0 lbs	26.5 lbs
<hr/>		
	77.5 lbs	

8/15/08 ALL 3 kittolo weighed & Measured  
Friday (GB & SKM)

	7/31/08 SCL	8/15/08 SCL
MT03	39.9	40.0
16	44.3	44.6
50	45.4	45.7

8/15/08 START 4% body wt. every other day  
Friday

8/15/08 TW drew blood + SKM & I skin  
Friday biopsied neck KRF SLP TWO turtles

See p. 80 continued p. 114

94

# PALMYRA

## Needs

par Sover / Chabupka TO Alan. FRIEDLBERG NOAA.GOV  
Turtle Collaboration? VOSTOK  
(Millennium Caroline)

Turtle Collaboration - CHRIS Lowe UCLB  
Photo of San Gabriel Turtle

1987 FFS Book xerox

xerox this book p. 9, 13, 42-45, 816

- JOHN - Turtle Book + pictures
- CHRIS Heard - Turtle Book + pictures

+ need Canton

Karen



Jim & Barbara Cole  
 S/V Complexity  
 Barbara.Cole@SVComplexity.com  
 JW.Cole@SVComplexity.com  
 Ham Call Sign: KDZLHO  
 SSB Call Sign: WDC5480



Hallberg Rassy 36

WDC 5480@sailmail.com

New  
 1/4/08  
 Nat. Geo. Article  
 KANTON ISLAND

9-15-08  
 KPF

isotope 9/15/08 Monday MEASURED SCL ONLY  
 Smaller Turtle TANK A - 37.2 SCL  
 Larger Turtle TANK A - 40.5 "

After Weigh Measure laterals PL of Kittalo 3  
 (6 week marks)

small  
 large

9/9/08  
 Tuesday



8/3/08 Size #1 Tags

MAILED TO Jeff PAULOSKI SLP

yx01-99  
yw01-99

2 KRF Turtles Isotopic Study

	DATE	<del>WT</del>	<del>REMARKS</del>	<del>INITIALS</del>
Small	8/18/08	96 "96" - WFT9	Light SCL: 36.6, N: 36.2 SCW: 29.4	CU: 39.5 CEW: 33.0
Large	8/18/08	"101" - WFT9	Dark SCL: 39.9 N: 39.7 SCW: 31.7	CU: 43.0 CEW: 36.5
			* 4mm skin biopsy	taken from

WT	<del>REMARKS</del>	<del>INITIALS</del>
6.8 kg 15.0 #	PL: 29.3 lat1: 14.8 lat2: 12.4 lat3: 10.3	5CC Blood taken by T. wor
8.4 kg 18.5 #	PL: 31.9 lat1: 16.0 lat2: 14.0 lat3: 11.6	3CC Blood taken by T. wor

the dorsal neck of each turtle

10/9/08 Thursday Weighed Measured Kettolo 3 + Manna (ent)  
TANK ANOW on pellets

253  
3/10/08  
Pellets

(96)

Bob Morris = 291-2053

PALMYRA

~~need to return~~  
Need Pictures ~~or replaced~~

Small GAS ~~Lowel~~ and on right file cabinet

extension handle for scoop net given

John Scott CHRIS JASKIN X3 PATRICK CHING book

~~95cm copper~~

~~P. Ching book sent~~

Scott DAY

Capto  
John  
J. H. H. H.  
J. H. H. H.  
Paper  
over

Ching  
sh  
10

Ching  
sh  
10

LFL

"L-BAND SATELLITE "skyview" PALMYRA #5-14 August  
Tues 7:00 2808

August 4 Monday Departure cancelled due to "severe rain" over Palmyra

Aug. 5 Tuesday departure = 1:30 pm  
GI #39,000 3 hr 50 min flight  
Arrive ~ 5:30 pm 6000' runway, smooth

landing. Started raining shortly after arrival. Bill Smith departed here. Chris DePkin (from Georgia) arrived for 3 wks. Then Beth Flint, then Steve Buckley. Chris here 2001-2002 prior to TNC PARC new building.

Evening - orientation talks

CAPT. AUGUST 6 Wednesday

By John (girlfriend Stacy) TOUR of LAGOON - turtles feeding inside just before major channel - dark close but couldn't touch on one. Tour of Turtle Hole - East. Turtles seen clear water. JUV. Turtles on flats over blue. But Spooked when approached by good net

Spooked blind net on north - net could go across mouth. Murky with worn down heads of LIMESTONE ROCK.

2 Boats = Chris DePkin FWS

AUGUST 7 Thursday AM. Capt. JOHN

Surkeled turtle hole AM. I saw 1 small hawkbill - Marc Team 3 greens northern side.

Shark nursery Reef - across from camp.

150' net caught 113 lbs

Caught 12cm SCL  
LF = 4EØ2 RFL = 4EØ1 HUMB

MT = A1 LER

"AL"

STARL

"Withering DEWASH IDEA"

① INCONEL SIZE 681 photos

(98)

PALMYRA

A Mollusc name = "Heteropod"  
EMAIL TO JOHN

As Remnant shell  
2 turtles seen eating it drifting in  
to north

ABAGAIL = 9y.o.

Eleanor Sterling - BOOK  
- Nat. History of Viet Nam

TW - Manuscript Palmyra - Garrett

5-14 AUGUST 08

(9A) TOOLS - knife / Pliers - Cutter

(1) Vigilance / SAFETY ← Human Turtle

(2) BYCATCH  SHARK   BUT LARGE SHARK  
 CORAL   
 ROCKS

(4) Number of personnel

(3) Efficiency of catch  
Health - STRANDINGS TO TW  
- Resuscitator given  
foam-core float line  
work in boat as platform for data collection  
Turtles where possible

(6) COPY X  
Contributed ST 24

Pay 2nd turtle together  
NO. SETS

DIVE handsnorkel

BOAT DIVE

SCOOP NET

Melissa Snow

08-08-08 CABIN 8

Palmyra (99)

~ 11 AM  
AUGUST 8, 2008 Scott GB, MR, Eleanor, KATE, KEVIN  
FRIDAY Set 400' foot net - 2 loop  
to left just inside channel of TURTLE

PM set 400' around Shark Nursery  
nothing - eagle ray 4 burps Reef

MR + GB  
late afternoon + evening Walked N. Beach Road  
looking for Coconut CRABS to Photo

AUGUST 9, SATURDAY

PARADISE ISLAND - set 1 (parallel to shore)  
400' net just east  
of pill box 2 captures adult ANES

ALL washed up  
on the beach

- ② B1 4E03 4E04
- ③ B2 4E05 4E06
- ④ B3 MORE to east 400' set 2  
4E07 4E08
- ⑤ B4 4E09 4E10
- ⑥ B5 4E11 4E12

PLASTIC white life now recent

100

George;

Your old hound dog. The book is beautiful, well written, and very much appreciated. When I went in for my exit interview at TNC, they gave it to me and I opened it to a lot of ooh's and aah's. I think that up until that moment, they doubted my Doctor of Turtleology.

Please stay in touch and tell all the turtle folk "Doc Chris says hey".

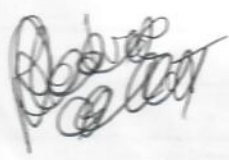
Thanks again for this book.

Yours,

Chris Heard, turtle guy

CS1996@bellsouth.net

Dr. Chris Heard  
1800 Babens Grove rd  
Beaufort, TN, 37076



AUGUST  
SUNDAY

1

ENT = A

MT = A

Subd

AUGUST  
Monday

Turt

10

PALMYRA

(10)

AUGUST 10, 2008

Morning off.

Sunday "Complexity" yacht departed for Canton

130pm 400' net set on (sand)  
Shark nursery patch reef - 2 catches  
within 20 min.

⑦ MT = "A2" Juvenile w/ hind flippers & associated  
missing and healed. 4EØ13  
4EØ14

⑧ MT "A3" "AUDREY" Spot 5 epoxy  
Subaloff named by Ingrid Attached.  
(foil fast)

4EØ15  
4EØ16 Released ~ 845pm  
Multiple abnormal carapace scutes.

AUGUST 11, 2008

Monday

MARC 2x Scuba NW end

Whirling Dervish 2 near misses = Ø  
400' by Bird Is. Ø (leagle Ray)

400' net west side turtle hole

Turtle Hole = 13 meters

⑨ 4EØ17 > "C1" Motofool  
4EØ18

⑩ 4EØ19 > "C2" MT  
4EØ20

PALMYRA

(105)

August 12, 2008

Tuesday

MARC SCUBA by  
Rusty "DOLPHINS"

Depart ~ 12 noon for Turtle hole  
Set net 400' west side of  
Turtle hole. 3 captures - 1 Small  
comatose

(11) "C3" MT 4EØ21, 4EØ22

(12) "C4" MT 4EØ23, 4EØ24

found comatose. bottom of net by Turtle Hole.  
RHIND only

(13)

NEED  
TDRS



4607334F6F

~ 38 cm SCL

Tube from <sup>pencil</sup> pen into glottis.  
~ 2:15 - 3:30 pm came back to life.

Kept overnight in Cabin 8

Aug 13 = Released ~ 8:30 am to the East channel  
before turtle hole.

NO MT, no samples.

Set 400' on Shark Nursery Reef - nothing



104

John.the.viking@helloworld.com John S

ST24 8/13/08 PALMYRA  
PARADISE Islet Release =

N 05° 52.705'

W 162° 03.423'

August 13, 2008  
Wednesday

11am TO LAGOON

Island 16 lagoon Boat  
w/ 2 by ANS,

no turtles <sup>seen</sup> first two "turtle areas" visited  
2 days ago. As tide rose over beach  
next "open area" - upright slab in water,  
marks the start.

set 400ft - caught B6 <sup>new</sup> MTC  
by holding up "float line" (Polyprop only)

Mesh size 14" knot-to-knot

= B6 <sup>maturing</sup> male 73cm SCL  
has some Hawaiian appearance.

new "B7" caught by hand (Adult Male) by Kevin  
Frey. 82 cm SCL

~~ST 24~~ put on B7 "FOIL-FAST"  
EPOXY  
My ST 24 ARGOS ID 235/3 ATTACHED  
w/ FAST-FIX MARINE  
EPOXY

Released 6pm. 4E27

4E28

"B8" MTool Missing FF soft Plastikon  
hand caught by Marc - green algae  
on carapace. Smooth skin on tail base.

106

RUTH UTZURUM DM WR <sup>need</sup>  
~~Again~~

Chris Heard  
cheard@tnc.org

~~need~~

~~sort~~  
~~need~~

~~CANTON~~

Barrie F. Morgan  
Deputy Director Palmyra Program

923 Nu'uuanu Ave.  
Honolulu, HI 96817

WORK cell: 271-5527  
Tel (808) 587-6213  
Fax (808) 545-2019  
palmyra\_admin@tnc.org  
nature.org

The Nature Conservancy   
Protecting nature. Preserving life.

home: 254-6501  
personal cell:  
391-6501

100% recycled consumer materials

~~sort~~

Steve Breckley

4017 E. Huber St.  
Mesa, AZ 85205  
480.832.8202 hm  
480.734.7777 cell

See page 98  
10

G  
De

CHRIS DEPkin  
DEPKIN@aol.com  
843-384-4244

Sent  
~~sent~~

Chris Depkin  
1378 Julienton RD NE  
Townsend, GA 31331

~~sent~~ JOHN SVENDSEN  
POSTAL =  
~~sent~~ PO Box 2061  
KITE & HE 96753

AUGUST 14, 2008  
Thursday

~ 8 AM set 400' net  
on Shrub Nursery Reef. -  
nothing caught, one turtle seen  
surfacing over deep area near edge.

Cleaned Cabin / RAKE leaves.  
Met w/ Eleanor. Met with Chris DEPkin.

See page 98

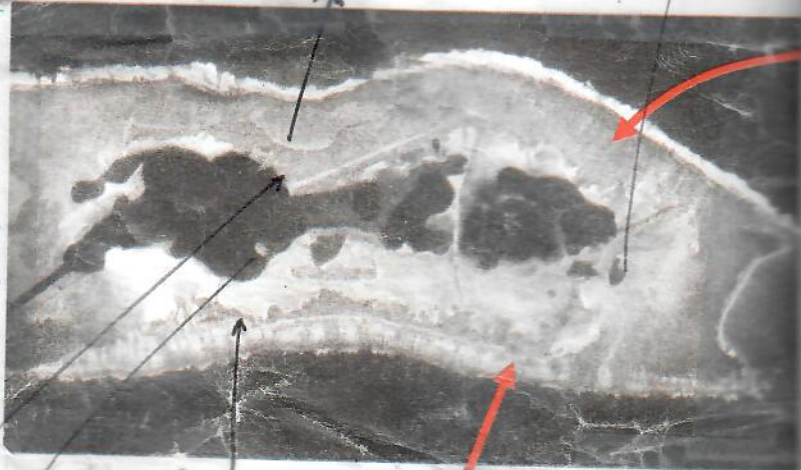
GI arrived 105 PM. KATE McFADDEN TRAVEL.  
Depart Blmyra 240 PM.

168

Feb  
1/8

NORTH BEACH

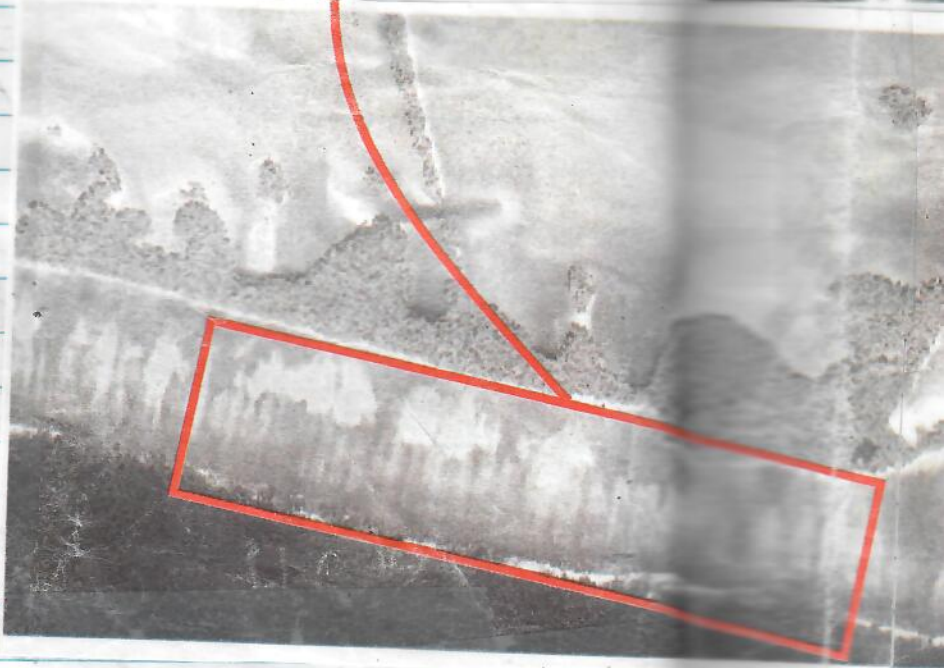
TURTLE HOLE



PARADISE IS.

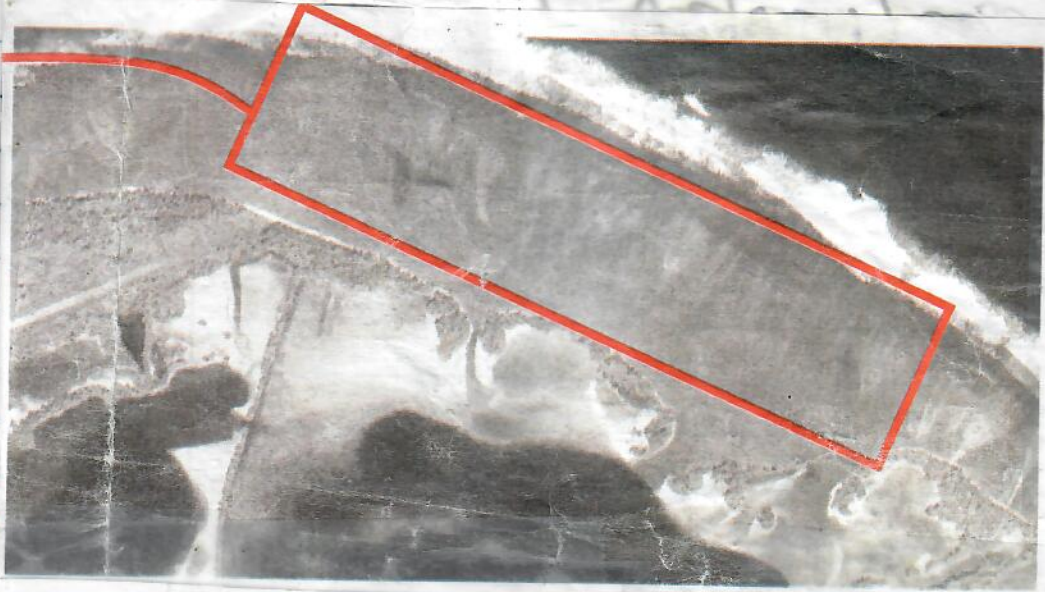
camp

SHARK NURSERY REEF



(109)

MT 330 > First Bay



Handwritten notes on lined paper, including the words "edge" and "100's".

(110)

Patrick Doyle  
Joanne  
Petty

L3 (MT 396) First Day  
Returned TO LANAIKA from FES  
AUGUST 18, 2008 MONDAY

med  
in  
lanaike  
book

Send for Lanaike book

MR. Mackenzie  
Papaloa Rd.

8/17/08 - 6PM  
Sunday Met Joanne and walked to and  
past beachrock of Puena Point around  
to sandy region of Police Beach.  
Airstrip (compacted gravel behind beach hidden  
by vegetation). Concrete "block house"  
marks a point of land.  
5 seemingly good (older but good) excavations seen.

Scale  
New  
Body

AUGUST 18, 2008 1pm meeting -  
MONDAY Bud, Melissa, Lisa, Karen F., Frankie

Meeting at  
PIRO

"NOAA NMFS PIRO

need "Management Plan" VS  
"Turtle Program"

Send Lisa VANATA Pd + S PIRO  
Acting for CHRYSATES so plans will be  
rewritten

SCORE opportunities - friendships - Trust - respect

MEETING  
TUESDAY

STEWART TUESDAY AUGUST 19, 2008 (SCORE)

'AHA MOKU 37 Regional Councils  
2007 Act

'AHA Moku Council Commission

"TEK" Traditional (Environmental)

"aha moku system" vs "ECOLOGICAL Knowledge"

Local Knowledge (late 1800's Chinese  
Japanese management)

"COMMAND CONTROL" vs old Hawaiian way  
of Management.



Sam -  
Stock Assessment  
IN Integration

of current "scientific separation"  
and Divisional

How can the ISSUE of fisheries -vs-  
protected species stock assessments  
be rectified  
justified & accommodated

3/19/08  
11  
10  
9  
8  
7  
6  
5  
4  
3  
2  
1

you are  
"S"  
3/2/11  
S

8/19/08 <sup>FY09 Center Milestones Meeting</sup> MILESTONE Meeting Sarah Malloy / Sam Pooley <sup>Facilitator</sup>

- 1) "Centerwide Milestones" - driven by external factors
  - 2) Transition due to new administration.
  - 3) Ecosystem approach to management.
    - Cross-Division, Interdisciplinary
    - Long Term in vision / first step
- For fewer from exercise today "NATIONAL TRAVEL"
- Then batch area from divisions: (Panel PDFs of what science needs for MAMMALS)

8/20/08 " 8AM - NOON Rights, Roles, Responsibilities FOR Federal EEO/NO FEAR COMPLIANCE "

Whistle Blower - you need a claim number.

you are Kitty/NATHELLE "being paid to know"

Bud - "Honey" waitress in Sacramento restaurant highly offended. SHE WAS ONLY 16-17 years old. He heard her talking to other people at other times.

"Situations" (= issues)

8/21/08 TV " PBS ISLAND INSIGHTS " Thursday 7:30-8pm TO 8 PM. Sam Pooley, Sean Martin, Bruce Anderson, Fishers, & author PBS Hawaii 973 1187 \$65 Turtle Towel www.pbs/hawaii

114

Captured from P. 96 Kiholo KRF-3

INITIAL Blood PM By IDEX

DATE				7-31-08		
TURTLE I.D.				Kiholo HI	0C50	6C03 7B16
CHEM (n=53)	MEAN	SD	RANGE			
ALK. PHOS	33.5	12.2	12-62	29	70	37
ALT (SGPT)	3.9	7.0	0-50	3	4	1
AST (SGOT)	158	41	1-270	157	165	137
CK				3300	1918	743
LDH	203	180	55-1286	282	208	122
ALBUMIN	1.7	0.4	0.6-2.2	1.1	1.0	1.1
T. PROTEIN	4.2	0.6	2.9-5.0	5.0	5.0	4.0
GLOBULIN	2.7	0.5	1.8-4.0	3.9	4.0	2.9
CHOLESTEROL	140	43	32-280	98	53	85
GLUCOSE	114	35	64-234	77	75	90
CALCIUM	9.1	1.7	1.1-12.1	10.4	12.6	10.3
PHOSPHORUS	8.2	1.3	5.9-11.8	6.7	4.6	4.6
POTASSIUM	5.2	0.9	3.9-8.6	4.9	5.4	3.8
SODIUM	158	4.0	148-170	148	152	148
A/G RATIO	0.6	0.2	0.2-1.2	0.3	0.3	0.4
URIC ACID	1.3	0.8	0-4.5	0.7	0.9	0.5
WBC EST.				22-25		8-10
WBC COUNT	13.8	5.3	5.9-23.6	15.3	4.3	3.8
HEMATOCRIT	29	4	17-25	33	31	23
HETEROPHILS	10	3	4-17	21	2	6
LYMPHOCYTE	71	8	53-83	68	86	78
AZUROPHILS	6	3	4-17	7	5	3
EOSINOPHILS	13	6	4-29	4	7	13
BASOPHILS	0	0	0-1			
ABSOL. HETS	1380		236-4012	3213	86	228
ABSOL. LYMPH	9798		3127-19588	10404	3678	2964
ABSOL EOSIN	1794		236-6844	612	301	494
ABSOL AZURO	828		236-4012	1071	215	114
COMMENTS						
DR JOSEPH:						
WBC EST. MAY						
MORE						
ACCURATE						

12/1/08 150 shipped back to Animal Monday following minimal feeding

Thursday 12/25

See  
p. 116  
p. 50

The early onset of metamorphosis among the stunted tadpoles in contrast to the control group is of interest because previous studies on tadpoles (Adolph, 1931; Rose, 1960; Rugh,

1981

Copeia, 1981(3), pp. 737-741  
© 1981 by the American Society of Ichthyologists and Herpetologists

**GROWTH AND METAMORPHOSIS OF SOLITARY RANA PIPIENS TADPOLES IN CONFINED SPACE.**—In experimental studies on crowded tadpoles, crowding is achieved by putting some excessive number of tadpoles into a prescribed area bounded by fixed walls. In terms of spatial relationships, a crowded condition consists of two fundamental components: confinement by physical walls; or confinement by other tadpoles. All interactions are either tadpole to tadpole or tadpole to wall. As long as there are two or more tadpoles sharing

12/1/08 #50 Shipped back to KithoLo  
Monday following normal feeding

tion competition among tadpoles of *Rana utricularia*. Ecology 59:1039-1046.

WILBUR, H. M. 1977. Density-dependent aspects of growth and metamorphosis in *Bufo americanus*. Ecology 58:196-200.

KENNETH R. JOHN Biology Department, Franklin and Marshall College, Lancaster, Pa. 17604 and JAMES M. FUSARO University of Rome, Italy. Accepted 16 June 1980.

We have demonstrated that tadpoles are tolerant of extreme physical confinement, but the more important result, from our point of view, is that tadpole growth is not inhibited by physical confinement provided that the dimensions of the growth chambers do not seriously hamper their mobility. This means that, as far as physical components are concerned, the reduced growth rates of crowded tadpoles may be attributed entirely to physical encounters between tadpoles, though confining walls of course play an indirect role.

Some of our results may be relevant to events under natural field conditions, as in the case of tadpoles completing metamorphosis in tiny residual depressions of a shrinking pond. This comparison may be unrealistic because the food

available in such a natural depression might be quite limited whereas this was not the case in the laboratory. If the results can be translated to the field, we suggest that tadpoles of sufficient size might be stimulated into early metamorphosis by extreme reduction of their living space.

TW Bled, measured, weighed, skinned, bled, all KithoLo Tadpoles. MT 50 put in Tank B Reduced food to ship 10/1/08 to MAC Rice.

Thursday  
12/25/08

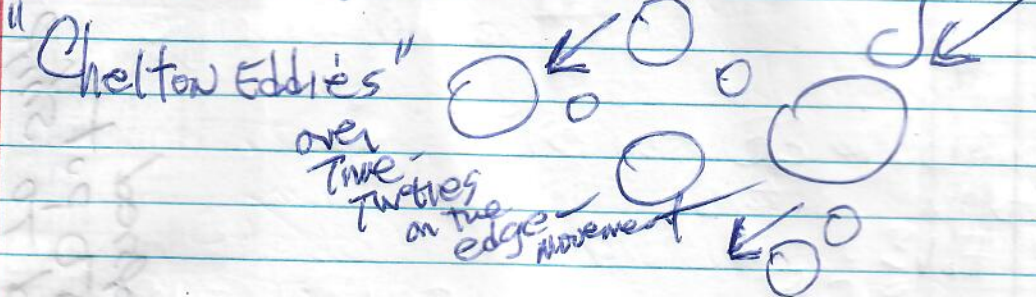
3 KithoLo (+ 2 Tank A) weighed, measured, bled and bled.

MARC SANTOS

9/26/08  
Friday Dinner

Hilite - Irene Kelly  
9/25/08  
MARC TALK

14 environmental variables  
1994 - 2007 38 turtles Diving



Few if any similarities between loggers heads  
ATLANTIC VS Pacific

Upper Right of 4 Red/Blue BAR graphs ~~image~~ looks like a longline boat.

MARC LAMMERS

"Foraging on scattering layer"

Date: Mon, 1 Dec 2008 12:59:22 -1000  
 From: Marc Rice <mrice@hpa.edu>  
 To: George Balazs <gbalazs@honlab.nmfs.hawaii.edu>  
 Subject: Kiholo #50

OK the water at 1251 h. Headed straight back onto the pond.  
 Marc Rice  
 Hawaii preparatory Academy

Need email cc Moon include recent loggerhead publications



### Seon-Jae HWANG

Distant-water Fisheries Resources Division  
National Fisheries Research & Development Institute

408-1, Shirang-ri, Gijang-eup, Gijang-gun  
Busan, 619-705, Korea  
TEL : +82-51-720-2325  
FAX : +82-51-720-2337  
C-P : +82-11-522-7619  
E-mail : hwangseonjae@hanmail.net

Send to Jett - EV from Richard  
need to Marcos - Genetics Hawaii  
- Rice & Bala 25

msantos@uac.pt  
- counterpart of dense paper?  
- Invite Him BACK - Archived

9/26/08 MARCO SANTOS - Informal Friday Seminars

Request - Photo of ORCA eating loggerhead  
[Trade for CAOCHWIE picture]

"Seamounts" - Very important for turtles  
So - N. Pacific? need TAIWAN tracks  
S. Pacific?

closed circulation over top known as Taylor Columns

Diving 80% of time at or near surface.  
most 2-5 meters  
Most less than 2 min  
Not active at night.

Corrosion LINK = 1 hour 3 hours etc Can Buy

← CONTINUED

(511)

Tiffany and GBA2  
8/26/08 Tues.

104 eggs  
estimated total

# CANA; POTHLOA EXCAVATION

3 NO sign development  
||

Presumably 33 alive and  
out of nest =  
31.7 =

EARLY Embryo  
1 |

32%  
Emergence

11 MID-EMBRYO  
|||||

59 LATE-STAGE develop 57%  
|||||

HATCHED SHELLS

39 |||||

6 HATCHING <sup>Dead</sup> FULL develop (HATCHED)  
|||||

Kent TO  
LANAI Book

(119)

8-22-08

FRIDAY

TO LANAI - Island Air -

Depart - 8:40 AM, 30 min

TO EXCAVATE nest POLIHA. Worked at  
airport for 1 hour - picked up by Mike ~ 10:30 AM.  
Hamburgers at Blue GINGER.

DRIVE TO POLIHA RE nesting reported  
Tracks/dig June 2008.

- 6 Test Towers recently installed on island -  
for WIND speed etc.

- Ron McQueen recent back surgery.

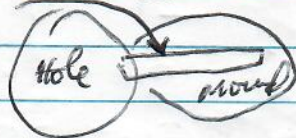
- Diane's daughters go to Hanalei - 1 - eighth grade

- Mike's son - 8th grade to Hanalei school

Dirt road to Polihua quite good.

Parked at end point by silt wash  
and white sand. Walked to the left

then over two rocky projection areas =  
to second sand cove. Hole and mound  
apparent. Dug trench through  
AT START OF COVE.



mound. Lots of sand slippage - dug. Dug  
for 45-60 min. Thin layer of moist silt of  
deep in sand. Close to giving up when  
egg shells found shallow and very  
close to Body Pit hole.

Further excavation revealed very few hatched  
shells, lots of unhatched advanced embryos,  
and a few hatched developed hatchlings.  
Possibly none emerged. All saved in  
plastic bags. Possible high heat, low  
moisture mortality.



CONTINUED 2072 GPS = 1/8 0.17 0.0017

(121)

8/22/08.  
LANAI  
Friday

Sounded the core - estimated  
200 meters wide (kabuto rocks).

Blip. Plastic windbreak  
makeshift in middle. Campfire evidence  
at several places. Turtles come to a  
tree partly shaded area with sand  
nearby. Nowhere else in core is like  
this. At bergs at midpoint of core  
there is the hint of a body pit  
and mound. Possible. In the first  
of the two cores and (more probable)  
body pit and mound (~~either wind worn~~).  
25¢ piece on mound (odd). Neither of  
these were attempted to be excavated  
(no time, no energy!).

WIND  
WORN

Departed Lohilua about 330 pm.

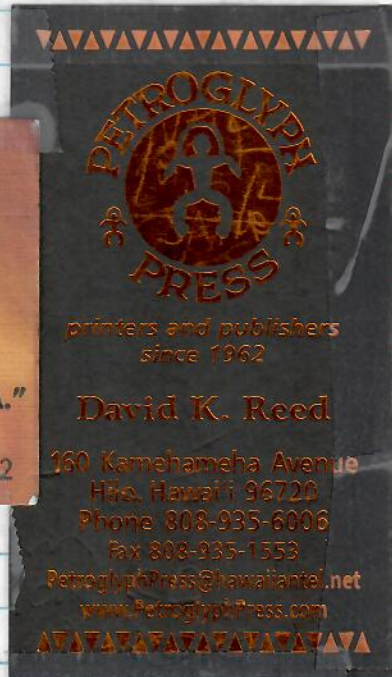
ALAMO HILO 8/31 SAT. 540364597  
COUNT

\$1500 - 100 years ago all BUT extract

8/26/08 TUES evening

\* Doug Williams  
254-4250  
366 ILMALIA Loop

Resurrection = 8/27  
Necropsy =



seen TV  
or KATMAI #2 - Wildlife View - Bears  
NAT. PARKS #1 Grand teton WY

(125)

8-25-08  
Monday 6-paired neck skin biopsy  
3 - pellets to Fedor Semov  
KRF 2 turtles, 7 <sup>post</sup> present squid.

8/26/08  
Tues 18 paired serum subsamples  
from their work fedor  
for blue ice to Semov  
# 8623 5321 9841  
Earliest 11-3-06 date, resant  
8-15-08

AUGUST 30-31 2008

"MACAMA PUNALUU" <sup>overnight</sup> <sup>WRIGHT</sup>

Pele HAWAII

WARDS

MAALETU festival

Eddie Kamae  
KAWAII

- Office of Hawaiian Affairs

- Hawaii County Council

- KAU Preservation

- Governor Ling <sup>day</sup> Aug 31, 2008

- Visited HONUAPU

Saw turtles foraging  
turtles coming into ponds  
described by fishermen

- Cape KUMUKAHU

- PUNALUU

SEPTEMBER 2-14, 2008  
Tuesday Sunday

SYDNEY - NOUMEA - LA GLORIEUSE TO  
AUCKLAND (Release N=42 Cc  
9/7-9/11 2 - cm ; 4-8 kg  
5pm 9pm at South East)

AUCKLAND 9/13 SAT. TO SYDNEY AUSTRALIA

9/17/08 TO JOHN ZARDUS

Send ID PIT 45255E712E  
Plastom & skin Biopsies from

had MTRP ID 9-13-08 39cm SCL  
Orchid Hotel via Pii & MARC RICE  
Left eye crystal

1/2 of sample to Bob Morin for analysis 9/22/08

Colette PhD UMN, BC <sup>under #B2AB</sup>  
VIA EDD

"Green sea turtles: mapping their foraging grounds in the <sup>Caribbean</sup> and modeling ecological ~~area~~ activities"

(ofcpts) 2005 "Baseline trophic relationships at Kaloko Honohou Hawaii"

Brenda MS <sup>thesis</sup> HPU

"EVALUATING SMALL SCALE SPACIAL and Temporal Patterns of GT Distribution"  
(need - AT ....)

ERIC Vetter

DAVID

ALAN FRIEDLANDER

Regina cell  
295-0079  
home 922-3670

VA For example

~~Oct 29 739 AM Flight 934  
648 PM WLA TO PSUA541~~

~~Nov 6 235 PM FL 5433 PS TO LA  
405 PM TO Honolulu VA935~~

~~or else NOV 5-13~~

(Sydney lost & Found police  
or Visitors Bureau

YUCCA VALLEY  
Monday 9/29 -  
10/4/08  
SATURDAY

Mon  
92

UA 730 am 9/29 TO 5541 PSP 7:19 pm

Sat 5433 219 pm 10/4  
UA 875/0 am

Arrive 7:55 pm

~~Tue WA 92 730 am  
Sept 30 5442 435 pm~~

~~Arrive PSP 525 pm~~

~~Tue WA 5459 1044 AM  
Oct 7 VA 83 236 PM~~

~~ARRIVE 5 23 pm~~

Today 48:48 has A/W

Sept. 16 2008  
TUESDAY

ALL HANDS MEETING  
9AM - DOLE Street  
10AM

(127)

3am  
Will "Give you a paired look that says  
"Shut up".  
Re JOHN OLIVER ITS issues brought up

RE:  
Performance Review - Importance of doing a good written  
Remind DC what you do.  
Don't focus on negative, opportunity.  
These are the things I accomplished  
Somewhere between 2-5. "one per element" = 4

A SHIP IN KAILUA

Ian Garvey  
546 Iana Street  
Kailua, Hawaii  
96734

Mailed  
STAND  
MARKETS  
+  
brochures

9/25/08 Alden TAGARINO  
684-733-5304 cell

Re: 16.5cm cch hawk's bill  
photo seen - good shape.

9/17/08 <sup>new</sup> SPST 5 Data sheets mailed  
Wednesday to Denise N=12

N=23  
N=16

51

to freezer

Need MAEIL  
FOR THE FIRST TIME  
Thank you for Lisian sk  
get hatchlings

9/19 - SAW THE SNOW TIGER HIDING BEHIND THE WAVES.

2:30 PM Year end FY08 Performance Review 1hr 15min  
and Report back nothing negative conveyed

Need Don Kobayashi - green turtle hatchlings? dispersed

Recommend Need Contact WC & Telorias / MICROWAVE SMALLER

BUD Jim Harvey - Monday Shallow DIVE Hatchling  
Mass Landing Bird tags modify for hatchlings

James T. Harvey  
proposed work for next year

Monday include hawk skills

11/24/08 feedback Performance Meeting Score 83  
3.68%



need to write book ANATHULU RIVER P.M.

(129)

Saturday Sunset =

9/20/08 Arrive Anathulu Sand Bar 4:45 pm

Met Ray Clarke and daughter Zoe, later  
Jan David; Steve Stella <sup>daughter's</sup> JESSICA KOLINSKI + others  
Ray wife; Turtle already already coming in.  
They counted 10+ so far, turtles  
need - 1/2 N for Ray's son David (13y.o.)

+ see photos

Notes/Needs: Water temperature outgoing flow  
like this date:

- Contact w/ Canal club - access & property use
- STW turtle <sup>garage</sup> w/ PAIRED Chelonia L & R forelimbs
- STW Small bobber on small turtle swimming
- kayak up river
- Paddle boards going in/coming out  
right over turtles - no response
- Pot on tracher - Sat Tag + TDR
- Large turtle crawled into sand bank when  
confronted by small dog.
- Prof of sand seaward ~~Prof~~ along seawall  
Turtles here in deeper water.
- walking aluminum boat up stream <sup>outboard</sup>  
There's a place by bank of bridge to take  
small boats in and out.
- Ray on earlier occasion saw small boat  
w/ motor running go up stream.
- Lots of small pole & light light small hook  
fishers along seawall and across channel  
in shallows of small beach there. No one  
seems to pay any attention to the turtles.

Marine Turtle Strandings on Molokai 1982-2007

	CM	EI	Unk
1982	1		
1983	0		
1984	3		
1985	2		
1986	1		
1987	2		1
1988	1		
1989	3		
1990	1		
1991	0		
1992	0		
1993	0		
1994	0		
1995	1		
1996	1		
1997	3		
1998	3		
1999	1		
2000	0		
2001	1	3	
2002	1		
2003	1		
2004	2		
2005	3	1	
2006	2		
2007	0		
Grand Total	33	4	1

	Alive	Dead	EU
CM	5	26	2
EI	1	3	0
Unk	0	1	0
Grand Total	6	30	2

9/2  
 Sant  
 Alge  
 sent  
 Ne  
 9

Monday  
9/22/08 Molokai

Needs based on 9/22/08 conversation

Sent by phone with Bill Puleloa:  
"The Book of Honu" To Dr. Pohlenue  
HFN To Bob Nishimoto, Mike Cohelo (+ Thanks)

~~Sent~~ for deep meat  
~~need~~ Russell Balazs <sup>MAIL</sup> to BILL  
Algae ID Book +  
Algae Seagrass book(?) + Print out of Arthur Balazs  
and Russell Balazs papers, + Genetics papers  
~~need~~ send Fedex Label for Bill's old papers re effect  
to SHIP TO ME.

Need Based on Conversations with  
KATE Z (MOC 9/22) & JOHN Gorman (MOC)

~~sent~~ 9/23/08 -  
Send BALAZS & Koss - Copies <sup>Hawaii</sup> Basking  
Withrow & BALAZS - PS <sup>Hawaii</sup> Basking

George,

DEC. 2008

FROM  
SHANDELL

Merry Christmas! I want  
to take this time to let  
you know how much I  
appreciate you. It is people  
like you that make this  
world a better place. Thank you  
I am wishing you and your  
family nothing but the best  
this Christmas and New Year!

HOLIDAY TRADITIONS

12/30/08 ASB

133



Shrine offers spiritual start to 2009

Explore the spiritual side of the New Year's — the one that doesn't involve fireworks and champagne toasts — at Hatsumode 2009, a Japanese celebration, from midnight Wednesday to 5 p.m. Thursday at Hawaii Kotohira Jinsha-Hawaii Dazaifu Tenmangu.

Events will include a traditional New Year's blessing, Shishimai Lion Dance and free bowls of ozoni — mochi soup.

Omamori, or lucky amulets, for 2009 will be sold, including the shrine's exclusive hibiscus- and honu-print omamori, as well as charms for the Lunar Year of the ox.

Admission is free.

The shrine is at 1239 Olomea St. in Kalihi. Shuttles will run from Damien School, where parking will be available from midnight to 3 p.m.

Call 841-4755 or visit [www.e-shrine.org](http://www.e-shrine.org).

HONOLULU LITE

Charles Memminger is on vacation. His column returns Jan. 13.

COURTESY HAWAII KOTOHIRA JINSHA

Palm RA

8/08



Acanthopora RA



134

see p. 70 KAWAALOHA Summary

cell - (760) 774-1272  
home MOLOKAI 552-2829

Lynn  
552-2111

Telecons  
bill  
Vogt

9/24/08 9/26  
Small cup  
hole - taken  
out. Window  
Screen put  
over area.

9/30/08  
A.M. 49 Tracts  
by Joe

8th day  
since  
dig

on the road to Manualoa, just before the 15 mile marker, turn right on Kalua Koi road  
stay on the road about 5.8 miles, turn into the open steel gate  
the sign on the rock wall says 390  
the name of the house, also on the sign says Ula Ula Hale  
the entrance is .5 miles past the papohaku beach park  
my phone number at the house is 558 2829  
Mahalo, Joe

Lynn and Bill Vogt

P.O. Box 338  
Maunaloa, HI 96770  
808-552-2911  
blvogt@mac.com

Joe  
KITAGAWA  
BOX 556 HI  
HOO (LETTER)  
96729

553-3069  
LIL MACMILLAN  
HCOI BOX 235  
KAWAKAWA, HI  
96748

I've attached my article for y  
the TNC volunteers for our tur

Aloha, Lil

All  
Members

N=9

- Joan Aidem
- Bill Feeter
- Frances Feeter
- Mike Grinnell
- Joe Kitagawa
- Lil Macmillan
- Phyllis Murakami-Ciu
- Scot Schafer
- Kathy Tachibana

Mike & Paddles talked to  
Coffee MARIA HOLMES (Mike Holmes) (135)

9/22/08 Monday  
Tues 9/23/08  
Monk Seal Monitoring Casuarina Point  
JULIE LOPEZ

telephone talk  
Loppa pulled  
with Bill

Arrived Motokai, Motulele AIR -  
10 AM. Dollar Car Rental -  
He at Kinemoto, Bakery wrote up notes.

\* Checked into Motokai Hotel room 107.  
125. Drove to Manaloa, then  
to IAPONA KU KALUA KOI - #

Joe KITAGAWA House. 5 acres 4.5M  
4 years ago. with wife, Son &  
Daughter. Mother from WAKEYAMA,  
1940's put in internment camp Calif.  
but vegetable farm ownership protested by  
a friend. Life in Thermal.

Just before sunset, excavated nests -  
first the one in front of Joe's home -  
hatching tracks 2 nights ago -  
found 5 live hatchlings. let them  
go, long way to sea (should have  
poked off). See page 136.

Second excavation to the south  
toward Casuarina Point in front of Bill Vogt's  
home. Dug a lot and deep nothing  
found (not numbered on page 136).  
West excavation nearby labeled #2  
top of eggs found - 2 broken. Recovered.  
(Re-buried)

(continued page 137)

(136)

MOLOKAI

ALL 9/22/08 Monday

Papohaku 9 egg shells  
5 live hatchlings, 6 unmatched

(3 saved for Adv. stage DNA embryos + 2. no sign of development)

#1

N 21° 10' 21.3"  
W 157° 15' 39.1"

NOTE  
From LIL  
M. A. Wilson  
for  
9/22/08

#2 -  
Left in place

N 21° 10' 17.8"  
W 157° 15' 43.0"

#3 -  
To the north

N 21° 10' 25.1"  
W 157° 15' 35.3"

95 egg shells  
+ 7 consisting of  
4 no apparent development  
3 Advanced embryos  
Dead and

- map Datum - Old Hawaiian

Very decomposed (debris saved) for DNA Attempt

+ 2 Hairybill embryos from follows Excavation



Molokai

PLASTIC BAG  
one sample

This note given to me by Lil at time of departure

(137)

Turtle #1 - 5/24/08  
 Hatch #1 - 7/28/08  
 → KAWAĀLOA Molokai  
 dug up 7/31/08

65 empty shells  
 2 undeveloped <sup>EMBRYO</sup> <sub>S/NTHING</sub>  
 1 very small egg

9/23/08 -  
collected by  
group 7/24/08  
KAWAĀLOA.

SAVED  
for DNA

Interview with  
2 Molokai DISPATCH  
INTERNS.

(Continued from p. 135). Then walked to  
9/22/08 Monday Nest #3 - another great hatch, no live hatchlings  
to north, part nest #1, and excavated  
(see p. 136).

Barbque at Joe's until ~ 8:30 PM, managed  
Drove back to Hotel Molokai (Tim's company)

9/23/08 Tuesday Drove to end of paved road - met Cil rode with  
up ~ 6:30 AM. Coffee at hotel restaurant.

Poe Poe  
manager

her to Kawaihoa Beach - met Bill Francis feet  
(Bill is 79) + Joekitegua - walked to west end of  
beach - excavated pits that has 2 excavations  
close together - both of unsure if eggs in both.  
Dig and dug but nothing found.  
Shells had to be her, Joan Arden saw  
emergency place.

Walked back drove out road a way  
then walked to sand area along cliff

(GO TO PAGE 139)

138

There's not a  
Dune to be seen  
\*Time\*



PAPOHAKU Beach by Joe Kitzgawa

Cliff  
more  
4 years

Joe said him and son attempted a dig of  
last year, 2007

Also, this season (2008) there is another  
excavation for toward Lau Pea.

fr  
9/23/08  
wednesday  
Kua  
Dr  
Su  
x  
Dr  
fr  
ID  
2

9/5  
exc

Date: Sun  
From: Lil  
To: Georg  
Subject:  
Re: George  
It was a  
their way  
What we f  
70 empty  
3 undevel  
5 dead, 4  
4 live th

Molokai

Question: 15 Hawksbill  
Haplotype specific  
Sequence special to  
Hawaii like giant turtle? (139)

(from p. 137)

9/23/08 Lots of excavations - dry sand,  
Tuesday heavy rain brought <sup>some</sup> silt into area.

Coffee at Hawaii Coffees shop in  
Kualapuu with Lil Bill Frances.

Drove to Hala'awa. photos. Found  
subtle depression - dug w/ hand and found  
shell/embryo eggs - others see p. 136.

Drove back and later picked up samples  
from Lil.

Departed Molokai ~~Molokai~~ Island Air  
~ 6:25 pm.

9/5/08 SUNDAY 9AM

Lil + Bill + Lynn <sup>by phone</sup>  
excavated papohaku at nest - ~~I consulted~~  
together.

Date: Sun, 05 Oct 2008 13:33:52 -1000  
From: Lil Macmillan <lilmac@hawaii.rr.com>  
To: George H. Balazs <gbalazs@honlab.nmfs.hawaii.edu>  
Subject: papohaku #2

Hi George,

It was a fun morning, always a highlight helping the stragglers on  
their way. :-)

What we found in the nest.....

- 70 empty shells
- 3 undeveloped eggs
- 5 dead, 4 still partially in their shells
- 4 live that were released to the ocean

Molokai

Question: 15 Hantsbill  
Haplotype specific  
Sequence special to  
Hawaii like giant? (139)

(from p. 137)

9/23/08 Lots of excavations - dry sand,  
Friday heavy rain brought some silt into area.

Coffee at Hawaii Coffees shop in  
Kualapuu with Lil Bill Frances.

Drove to Halaupa. photos. Found  
subtle depression - dug w/ hand and found  
shell/embryo eggs - others see p. 136.

Drove back and later picked up samples  
from Lil.

Departed Molokai ~~Molokai~~ Island AIR  
~ 6:25 pm.

9/5/08 SUNDAY 9AM  
Lil + Bill + Lynn by phone  
excavated papohaku at nest - I consulted together.

Date: Sun, 05 Oct 2008 13:33:52 -1000  
From: Lil Macmillan <lilmac@hawaii.rr.com>  
To: George H. Balazs <gbalazs@honlab.nmfs.hawaii.edu>  
Subject: papohaku #2

Hi George,

It was a fun morning, always a highlight helping the stragglers on  
their way. :-)

What we found in the nest.....

- 70 empty shells
- 3 undeveloped eggs
- 5 dead, 4 still partially in their shells
- 4 live that were released to the ocean

(140)

Dr. Lowenberg LA Dentist

EMAIL DAVID BUEVY KAUAI

Needs for NCL OCT 2008

ENERGY  
Int# 9835747

96225  
96225

George, 2008!

5964  
oldest (trunk)  
notebook  
Spr 5964

- new Basket & Lowering Ropes
- Programming by Denise <sup>SAT TAG spots on ST24</sup>
- Pelleted Food/Fish net <sup>(one on longer cycle FIVE Mest)</sup>
- Magnet NCL data Book
- ANIMAL CARRIERS (6) <sup>at least</sup>
- CONTACT <sup>NOTIFY</sup> (FWS/NOAA/STATE) <sup>PHWR</sup>
- DOMINGO CRAVALLO <sup>CALL</sup>
- Test size of ST24 on Turtle
- Poster(s) of past Trackings
- CASE OF PWF brochures
- PRINT-outs of <sup>hobbyashi, Howell</sup> POLOVINA + Parker Diet
- <sup>Small</sup> Hand Puppets/Flower Lei <sup>(Turtle blow up)</sup>
- ~~Halloween~~
- Clean-up stuff: <sup>NEW</sup> wiper/plastic BAGS/underPADS
- Kids swim pool
- AVAILABLE Room <sup>TIME and PLACE</sup> <sup>BOARD</sup>
- Web site Sign <sup>Poster</sup>
- Need SATURDAY <sup>MTPP</sup> WORKER
- PIT Reader / PIT TAGS
- ANIMAL CARRIERS
- Hatching model
- My cards
- Hand out - describe Project
- My notebook
- Hawaiian ST Research <sup>NOAA</sup> Logo
- Turtle Tattoos HP A
- SIZE 1

★ Deb Yamaguchi photo

★ Sealed in PLASTIC Plastic

Deb Yamaguchi Tiffany

PWA  
Sep  
9/3  
MI  
WC  
26  
Medewi  
DA  
du

MA