

BALAZS

JANUARY 5, 2009
TO FEBRUARY 25, 2010

FEBRUARY 25, 2010

COMPOSITION BOOK
GEORGE BALAZS
808-286-2899
427154
42717
50154
12

INDEX
P. 12-13

VONU IS HANDCRAFTED LAGER
BREWED WITH TROPICAL
WATER IN THE HEAVENLY
FIJI ISLANDS.
ENJOY THE CLEAN, CRISP TASTE AND
HELP US SUPPORT THE ENDANGERED
VONU DINA MAJESTIC
SERV TITLE OF THE SOUTH PACIFIC
VONUBEER.COM

3 of 3

NO PRESERVATIVES. PURE INGREDIENTS. WATER
SERVE COLD. WALTERED BARLEY & HOPS
4.5% ALC/VOL (930ML) 12 DRINKS
BREWED AND BOTTLED AT THE ISLAND BREWING CO. FIJI ISLANDS.

BREWSAWA & STEEL LTD. TRADING AS ISLAND BREWING
COMPANY, EXCISE CONTROL NO. 1072 KABANI BD
NADI, FIJI ISLANDS. PH +679 672 7493

BEST BEFORE: 17 FEB 10 VCB

FEB 1-5, 2010

Fiji - NADI ^{side trip} LANTOKA

VONUBER.COM

"TURTLE SATELLITE TAGGING and DATABASE TRAINING"

TANOA International Hotel TONGA, FIJI, KIRIBATI
TUVALU

ID Code 4/462 on Lady NAKALOU
(Vanua, Levu captured) Released Wailoaloa beach
1/28/2010 2/3/10 (12:15 PM)

SUSTAINABLE USE - Food for Thought ^{SON OF TURTLE}
CULTURAL

KAPOHO, PUNA FEB. 8-13, 2010

N=28 (10 NEW, 18 RECAPTURES) Monday - Saturday
6 FP 125 TOTAL

Rice + LAURA JIM Team Week 6-8th graders
HPA Middle School

Makaha opened just 2 weeks ago

leeches

2/11/2010 Telecon Eleanor STERLING
Re: Palmyra

need - EMAIL Eleanor / ANNE TREVOR
Re TAG Numbers Palmyra

Need HISTORICALS

2/12/2010 Rice/BAZZS
LIST of Flipper TAGS/
ARGOS ID/DATES

139

- 1) 746-T 747-T 748-T 748-T
- 9/10/97 573-T 15-T 16-T
- 3) ^{no tag flipper of sheet} BLANK 24192 (9/2/98)
- 4) ^{no flipper TAG shown} BLANK 24194 9/5/98 ^{Head Cool}
- 5) " 4800 9/4/98
- 6) " 25694 9/2/98
- 7) " 23044 (2/6/08) L18
- 8) U260 4800 8/6/92
- 9) U236 8/6/92
- 10) U306 8/7/92
- 11) U273, 74, 75, 76 8/30/93
- 12) U204, U205, U283, U285 8/24/93
- 13) BLANK 22175 MALES 6/7/95
- 14) 6038 6/7/95
- 15) A769 0773 9/23/95
- 16) A734, 9289, 9312, 199-C 9/8/97
- 17) 6-T, 7-T, 9-T 9/8/97

All SAT Tagged
RE FFS

Acquisition Procurement TRAINING WORKSHOP
FEBRUARY 16, 2010 WESTERN DIVISION 8AM -
TUESDAY credit card SUSAN STERRELL

TALK FRAMST!
3k supplies
2k Services ^{materials} etc.
Contract tense?
Labor hours

BPA - Good for 5-years.

Acquisition Strategy - P.O., CC, GSA schedule, BPA ^{Contract} ^{Product} ^{Services}
Sole Source.

Members:
All now - USA based businesses are Large Businesses.
Justification: only one source

Fedbizop website
"Results of Market ^{sole source} Survey"

Purchase Orders ⁽³⁾ vs "Contracts"
15 MIN Break

PART II

APG (Acquisition Process Guide)

Milani have credit card acceptance?

x Morris - INVOICE IT ALL ^{Basic} + BPA or credit card
cancel and do it a different way.

Milani 2.4k started work?

Regina?

Soft permit
STRANDINGS?

April 19 - Midway need travel order
Schedule March — need travel order for KONA.

social security • April 16 need travel order for HILO
SS - 2009 earnings statement?

2/16/10 1PM Spend Down JIMAR led by BONNIE
2010 2009-2010 Money by Sept 30, 2011 Meeting Seminar Room
DOMINIQUE

2010 Jimar Proposals for funding
Renew NEPA 6 MONTHS IN advance EA

NOTIFY STACY

6.5k Hawaii Wildlife Food BAA end of 2011

From p. 129 Kill MAISON - Mapping LAJOLLA
Feb 23-24 2010
Western/Southern nesting areas - 170 sites

Spatial Criteria - "MANAGEMENT UNITS"

Groups within 500km are another

Green - 170 gt sites

hawksbills > 140 sites

Need Program Overview Printout

ANAL MAP book (by Mike CEE) Need

STACY - Hawksbills in Hawaii - Present

MANJULA / ^{camping cap} East Is. and Colette KALOKO camp reports

S. Diego Power Plant will close end of 2010

"Dumb But Adaptive"

TO PAGE 143

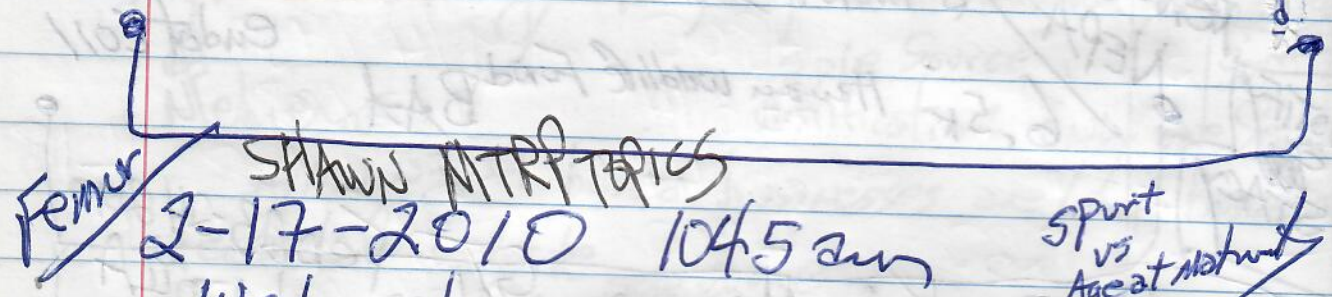
ANMA

Amritapuri, KERALA
Southern India

Sometimes
said as "AMA"

- Malayalam (Indian language) = "Tutle"

YOUTUBE: ANMA ABC 20/20
ANMA CNN



Wednesday "

LAGS = Lines of Arrested Growth

To determine Age of maturity

two =
Gonads? histo

- * special ^{BONES} Samples
- * (1) Tag history - ^{TDR} Hopsokollai totalenwa STRAND
- * (2) Slow/no growth KONA

Send Bob Humphrey - Melissa tetracycline

PSD STAFF Meeting
KAPICANI - 1:30pm

CHAD ^{deployed} - Kawai cell-phone TAGS
Kyle - " ^{collaborated w Stacy and George} Submitted manuscript to Journal
Shawn FAA - Being Rehired

Need: TALK TO Nicole RE
+ MARCH 16th 2010 +

PSD Encourage Graduate School

TRACY - JUNIOR
Year ~ 1981 from Hida Retirement.

4:45 PM (FROM PIHI) FEBRUARY 23, 2010
KYLE North Shore - N. Shore decline?
and so what happened to takewa hot spot?
and Kana hot spot.

- Need = BCIAU Stacy pdf of dissertation.
- Need = KI - diet breakdown
- Need = DISPLACE Ngae (see Dennis Russell)

OKA - Geographic - native? ~~INVASIVE~~
→ Sandy Beach outfall need
injection

1 **Title:** Eutrophication, invasive macroalgae, and a tumor-forming disease in marine turtles

2 **Authors:** Kyle S. Van Houtan^{a,b,1}, Stacy K. Hargrove^a, and George H. Balazs^a.

3 **Affiliations:** ^a National Marine Fisheries Service, Pacific Islands Fisheries Science Center, 2570
4 Dole Street, Honolulu, HI 96822; and ^b Nicholas School of the Environment and Earth Sciences,
5 Duke University, Durham, NC 27708.

6 ¹ To whom correspondence should be addressed. Email: Kyle.VanHoutan@gmail.com

7 **Key Words:** fibropapillomatosis, spatial epidemiology, herpesvirus, luxury consumption, arginine

8 **Abstract word count:** 216

9 **Main text word count:** 3,643 (excluding references)

10 **References:** 58

11

12 **SUBMITTED TO NOAA INTERNAL REVIEW ON 6 JAN. 2010**

13 **PLEASE DO NOT SHARE WITHOUT PERMISSION**

14

15 **ABSTRACT**

16 Wildlife diseases are an increasing concern for endangered species conservation, but their
17 causes and human influences are often unknown. We analyzed 3,939 stranded Hawaiian green
18 sea turtles (*Chelonia mydas*) over 28 years to understand fibropapillomatosis, a tumor-forming
19 disease related to a herpesvirus. Turtle size is a consistent risk factor and size-standardized
20 models revealed a variety of temporal patterns. Some regions peaked in the 1990s and then
21 declined, in some regions rates remained constant, and rates in other regions increased. Land
22 use, onshore of where the turtles feed, may play a role. Spatial models that characterized
23 disease rates locally performed better than those that grouped observations by island or
24 altogether. Elevated disease rates clustered in watersheds with high nitrogen (N) footprints - a
25 measure of natural and anthropogenic factors that influence coastal eutrophication. Further
26 analysis shows strong epidemiological links between disease rates, N Footprints, and invasive
27 macroalgae and points to a potential cause. These turtles now forage on invasive macroalgae,
28 which can dominate nutrient rich waters and sequester environmental N in the amino acid
29 arginine. Arginine is known to regulate immune activity, promote herpesviruses, and contribute
30 to tumor formation. Our results have implications for understanding diseases in aquatic
31 organisms, eutrophication, herpesviruses, and tumor formation.

1/2010

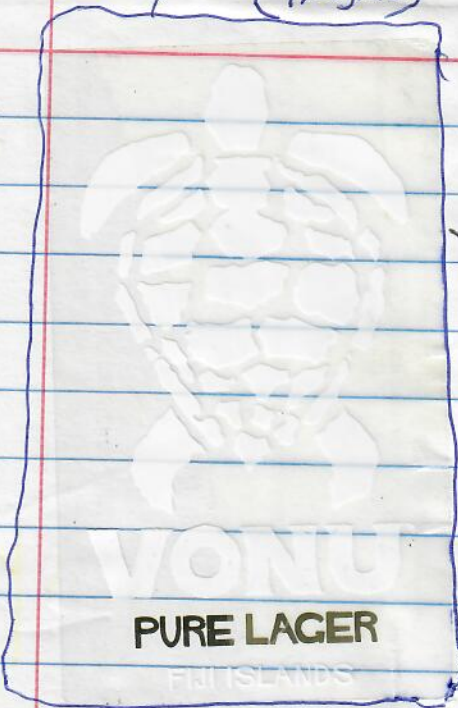
Top 10

NAME
DAN

YUCCA VALLEY FEB. 18-22, 2010 then
(4 nights) START: TUESDAY

145

From
and back
TO: San
Diego



February 23, 2010
9 AM LAJOLLA
"NMFS Pacific SEA
TURTLE PROGRAM OVERVIEW
AND DEVELOPMENT"
New-YONAT =
"Fishery Conservation and
Interaction Division"

See page 148

Jeff Semiroff - "Blueprint
Dutton = under his picture "Synthesis"
other = SE and Contaminants

RFP
start of a
synthesis
conducted
and
SCC

BAS office sustainable fisheries
" Marine Habitat Conservation
" Protected Resources

Top. 127

1988 Amendment created National Sea Turtle Conservation
BAS Policy & Guidance
Philan 1988-96 (1995) sea Grant Intern + Assistant
Brewer Stacy - IPA, FPR

NAME
DAN

NED

PR1 - results; PR2 - BAS
"Two coming from Hawaii" Contaminants
used turtle
155003

ARIEL 2F, NO. 1033, Yucheng Rd.
GUSHAN DIST, KAOTSIUNG CITY
804 TAIWAN ROC



Season's Greetings

From our family to yours,

Patrick, Bridget, Nora, Molly
and Mea'a

2009



In April 2009, Pat traded in his Navy khakis for Air Force blues. He loaded the UHaul and drove 5000 miles from Jacksonville, Florida back home to Anchorage, Alaska where he joined the Alaska Air National Guard as a C-130 pilot. The McBrides enjoyed the Alaskan summer, then in September moved to Cabot, Arkansas for C-130 training. We'll be here for 6 months and so far have embraced the Razorback lifestyle.

Nora rang in her 3rd birthday with a trip to NeverLand at Aunt Ginny's, and if I had to say she had an imaginary friend it would be Peter Pan. She still loves all things pink (although purple has been making an appearance lately), princesses, puzzles, and having "sleepnights" (sleepovers) with her cousins. Nora started preschool two days a week and lives for dance class. She's also very good at using our own parenting phrases against us to make her point.

Molly is 18 months, has discovered the power of screaming "No!" and has a very strong kung-fu grip. She loves to give hugs and kisses, but it is sometimes followed by a quick slap to the face. (We're working on it!) She seems to learn 5 new words a day, so we don't think she'll have a problem keeping up with big sister. She loves brushing her teeth, cookies, "gilk" (milk), making towers, and sitting on Mea.

Bridget thinks 2009 was a busy year- living in 3 states, chasing 2 kids, and squeezing in a run when she can. And when that didn't occupy her, she spent too much time (according to her husband) immersed in the TWILIGHT series. Bridget is looking forward to not living out of a storage unit and settling down for good in Alaska next spring.

Happy Holidays! Love, The McBrides



2009

Thank you for everything. Sorry it took me a while to send this back to you. For my project I got an A. My panelists said I was really good at presenting and scored me good. Thank you again for all your work. Please when you find out when you are coming to Kona side please call. I would love to come down and help

Sincerely,

Casey Wosten

Home: 328-0103



NMFS Pacific Sea Turtle Program Overview and Development
February 23-24, 2010
3333 North Torrey Pines Court (large conference room)
La Jolla, CA

Agenda (Full)

Objectives:

- To share information among NMFS scientists and managers on current recovery activities for Pacific sea turtles
- To identify data/information gaps and management/research priorities
- To discuss future Program planning, development and coordination

149

WORLD/IN BRIEF



An Indonesian police officer and tourists carry a sea turtle to release it into the ocean on Kuta beach in Bali, Indonesia.

AP photo

Indonesia rejects turtle sacrifice plan

JAKARTA, Indonesia — Indonesia has rejected a push by the resort island of Bali for rare turtles to be legally slain in Hindu ceremonies, siding with conservationists of the protected reptiles against religious advocates, an official said Friday.

Bali Governor I Made Mangku Pastika enraged environmentalists by advocating a quota of 1,000 green turtles be killed each year, strictly for ceremonial purposes.

He said legally killed turtles

should not end up in cooking pots, served to tourists in restaurants as soup or turtle skewers as they had in the past.

"It would be supervised tightly, and any violation would have to be punished," Pastika said in Denpasar, Bali, on Wednesday.

Editorials

TUESDAY, SEPTEMBER 29, 2009

MAN, LAND AND SEA

Hawai'i fisheries need

Catching reef fish in Hawai'i can be pretty straightforward.

Take whatever tool you need — a pole, net, spear — to many shorelines and catch one. Or two. Or 20.

This wide-open, lightly regulated harvesting makes no sense. The survival of Hawai'i's near-shore reefs depends on a healthy population of fishes. So does our economy, which values those reefs at an estimated \$10 billion.

The near-shore reefs are worth protecting, and there should be sensible rules that can do the job.

But even as the state Department of Land and Natural Resources moves closer to imposing modest regulations — size

TO LEARN MORE

DLNR has been holding informational meetings on fisheries management, including regulations for harvesting uhu, weke and jacks. Two more are scheduled on O'ahu next month:

Honolulu: 6-8 p.m. Oct. 8, 1151 Punchbowl Street, Kalan-imoku state office building, DLNR Board Room 132.

Kāne'ohe: 6-8 p.m. Oct. 13, Benjamin Parker Elementary School cafeteria, 45-259 Waikalua Road.

and bag limits on uhu, weke and jacks, three popular but threatened reef fish species — it is encountering resistance.

Spokesmen for fishermen worry that too-strict bag limits will put small commercial fishers out of business.

They also say that the limited

data available do not reflect the amount of fish that are really out there — that there's still enough to allow a robust fishery.

It's true that the data are limited. While new rules have led to more commercial fishers reporting their catches, Hawai'i doesn't require recreational or sub-

closer management



sistence fishing licenses, or any reporting on what's caught. So it's difficult to say how

much fish are being taken out of the ocean. Nonetheless, there are strong arguments for stricter management of Hawai'i fisheries.

Recent studies have shown that overfishing has a significant negative impact on fish populations, depleting popular species like parrotfish and jacks to critical levels. And it doesn't take a study to know that there are far fewer fish offshore than there

used to be.

Certainly, limits on harvesting uhu, weke and jacks, for both commercial and other fishers, are needed to sustain the species in the long run. And for the smart, comprehensive management of Hawai'i's fisheries, other tools, such as seasonal closures and a ban on monofilament lay gillnets, should be considered as well.

Fishing is an integral part of Hawai'i's cultural, economic and recreational heritage. In old Hawai'i, the fisheries were carefully managed and protected with sustainability in mind.

Somehow we've moved away from this practice; it's time we returned to it.

Date: Mon, 28 Sep 2009 11:58:24 -1000
From: Irene Nurzia-Humburg <Irene.Nurzia-Humburg@noaa.gov>
To: George H. Balazs <gbalazs@honlab.nmfs.hawaii.edu>
Subject: Turtles in landfills

George,

As you asked for during necropsy the other day, here are some numbers:

Turtles necropsied 3/24/1982 to 5/5/97 (day that Kapaa Quarry shut down as a landfill), assumed to have gone to Kapaa quarry landfill: ~1050
Turtles necropsied 5/6/97 to 7/31/09, assumed to have gone to Waimanalo Gulch landfill: ~1750

These do not include turtles in the "non necropsied" category, which include turtle parts or carcasses too decomposed to look at, which probably still contribute to this number, but would require a case by case analysis, and I didn't think it necessary at this stage.

LAND FILL

2,800 TURTLES

END TO END IF 65cm = 162,000 cm ≈ 100 miles

100 miles
end-to-end turtles

151



Humpback protection may go

HSB 10/2/09

The whales could be taken off the U.S. list of endangered species, but there is opposition

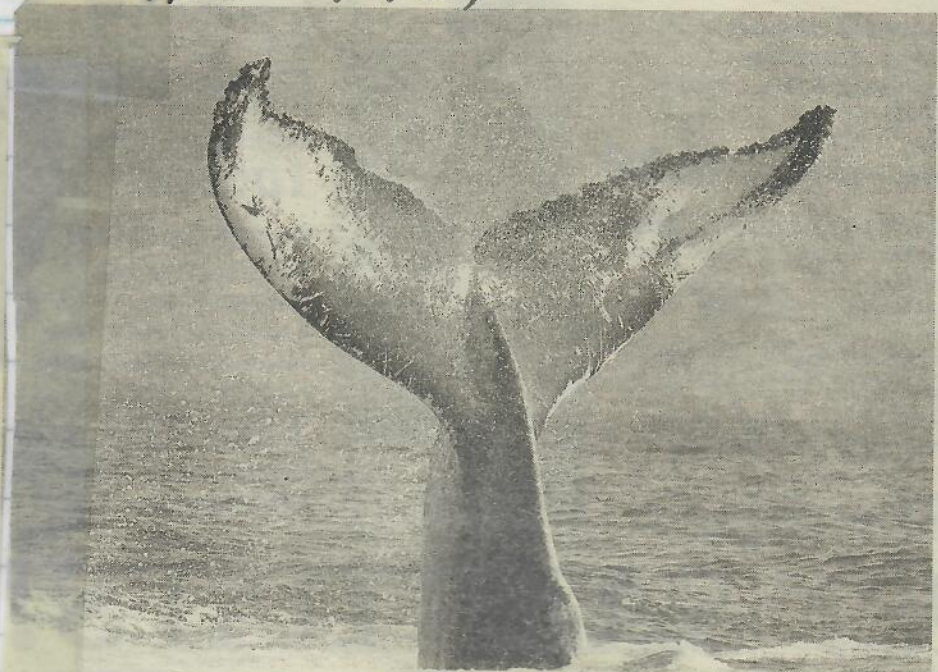
BY AUDREY MCAVOY
Associated Press

The federal government is considering taking the humpback whale off the endangered species list in response to data showing the population of the massive marine mammal has been steadily growing in recent decades.

Known for their acrobatic leaps from the sea and complex singing patterns, humpback whales were nearly hunted to extinction for their oil and meat by industrial-size whaling ships well through the middle of the 20th century. But the species has been bouncing back since an international ban on their commercial whaling in 1966.

"Humpbacks by and large are an example of a species that in most places seems to be doing very well, despite our earlier efforts to exterminate them," said Phillip Clapham, a senior whale biologist with the National Oceanic and Atmospheric Administration.

The government is required by law to review the endangered species status of an animal or plant if it receives "significant new information." The National Marine Fisheries Service, a NOAA agency, received results last year from an extensive study showing that the North Pacific humpback



NOAA FISHERIES SERVICE/ 2004

The federal government is considering taking humpback whales off the endangered species list in response to data showing the animal's population has been steadily growing in recent decades. Above, the tail of a humpback whale is seen off the coast of Hawaii.

population has been growing 4 to 7 percent a year in recent decades.

Public comment is being accepted until Oct. 13 on the upcoming review, which is expected to take less than a year. It is the first review for humpbacks since 1999.

A panel of scientists will then study the data and produce a scientific report on their analysis in late spring or early summer. It is unclear what the decision on delisting the humpback will be.

"I don't know where the humpback people are going to come out," said David Cottingham, who heads the marine mammal and sea turtle conservation division at the Fisheries Service. "It would be

premature to talk about it."

Some environmental groups are already opposing the possibility of a delisting.

Miyoko Sakashita, ocean programs director at the Center for Biological Diversity, said that ongoing climate change and ocean acidification are emerging threats that could hurt humpback whales.

"Ocean conditions are changing so rapidly right now that it would probably be hasty to delist the humpbacks," Sakashita said.

Ralph Reeves, who chairs the cetacean specialist group at the International Union for the Conservation of Nature, said the U.S. should remove humpbacks from the list if populations have sufficiently recovered.

He said conservationists must "be prepared and willing to embrace success" if they are to maintain what he called a "meaningful" endangered species program.

"The whole process, the credibility of it, depends on telling people that things are really bad when they're really bad, and tell people that they aren't so bad when they aren't so bad," Reeves said.

THERE ARE now an estimated 18,000 to 20,000 humpbacks in the North Pacific, up from just 1,400 in the mid-1960s.

An early 1990s survey of humpbacks in the North

Atlantic showed the population there was some 10,600. The results of a follow-up to that study, expected by the end of the year, are likely to show this population has grown, too.

The global humpback population is estimated to be about 60,000, according to the Swiss-based Conservation of Nature union.

Helping the humpbacks is that they reproduce once every two to three years, as opposed to every three to five years for other whale species. They also have a diverse diet, including krill and herring, capelin and other fish.

"They feed on a lot of different kinds of things, so they're adaptable," Clapham said. "They seem to be a resilient species generally with a lot of options."

THERE ARE some subpopulations of humpbacks, however, that are not as robust. A South Pacific group that feeds in the Antarctic and then migrates to the warm waters off New Caledonia, Samoa and Tonga to breed and calve is not doing as well.

Whale experts say this is because commercial whaling and, later, illegal whaling by the Soviet Union shrunk this population so dramatically that it has had a harder time recovering.

There are also humpback populations about which relatively little is

known. These include humpbacks that spend the winter in tropical waters off southern Japan and the Philippines and the summer near Russia's Far East coast.

This group also appears to be relatively small, with only about 1,000 whales.

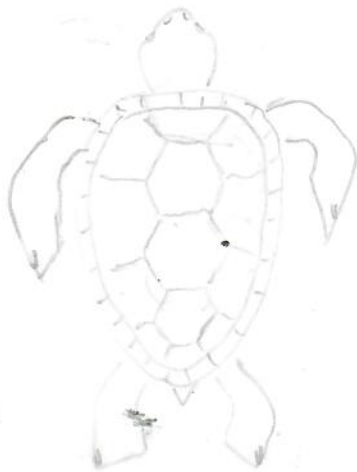
There is a chance the review could lead to the removal of healthier subpopulations from the endangered species list while other groups that are still at risk could be left on.

The U.S. does not have authority over species management in the waters of other nations, but it may prosecute U.S. citizens and corporations that violate U.S. endangered species law overseas.

Hallmark

To: Mr. Balazs

Thank you for all you
have done to help me under-
stand turtles more, I have learned
lots from you and really
appreciate it. Specially every-
thing you have sent to me.
It will really help me in my
presentation, that is coming
up in two weeks.



Ally 2009

CASEY WOUTEN

83-5215 PAINTED CH. RD.

CAPTAIN COOK, HI 96764

It was very much appreciated.

HSB 11-12-07

Brown pelican to be removed from endangered species list

ASSOCIATED PRESS

WASHINGTON >> Much like after its death-defying dives for fish, the brown pelican has resurfaced after plummeting to the brink of extinction.

Interior Department officials announced yesterday that they were taking the bird off the endangered species list, after a nearly four-decade struggle to keep the brown pelican population afloat.

The bird now prevalent across Florida, the Gulf and Pacific coasts and the

Caribbean was declared an endangered species in 1970, after its population — much like those of the bald eagle and peregrine falcon — was decimated by use of the pesticide DDT. The chemical, consumed when the pelican ate tainted fish, caused it to lay eggs with shells so thin they broke during incubation.

The pelican's recovery is largely due to a 1972 ban on DDT, coupled with efforts by states and conservation groups to protect its nesting sites and monitor its population, Interior



ASSOCIATED PRESS / MARCH 2007

The brown pelican has rebounded after coming close to extinction.

Department officials said.

"Today we can say the brown pelican is back," Interior Secretary Ken Salazar said. "Once again,

we see healthy flocks of these graceful birds flying over our shores. The brown pelican is endangered no longer."

The official announcement came earlier at a press conference at Big Branch Marsh National Wildlife Refuge in Louisiana, which is dubbed the "Pelican State". The bird has been on the state's official seal since 1804, but the pelican had virtually disappeared from its coasts in the 1960s.

"It's been a long journey," said Tom Strickland, assistant secretary for fish,

wildlife, parks for the Interior Department.

Strickland acknowledged that the bird's coastal habitat was in danger from rising seas and erosion, but he said wildlife officials were confident the bird was ready to be taken off the list.

The bird's global population, including the Caribbean and Latin America, is estimated at 650,000. The announcement does not remove all protections for the species. It will still be protected by other laws, such as the Migratory Bird Treaty Act.

155

156

Milestone ideas for FY 2010

Date: Mon, 14 Sep 2009 16:59:54 -1000 (HST)
 From: George H. Balazs <gbalazs@honlab.nmfs.hawaii.edu>
 To: Stacy Hargrove <Stacy.Hargrove@noaa.gov>
 Subject: Milestone ideas

Do you have suggestions? See my assortment below.

Possible MileStone assortment FY10- four are normally expected of us:

- 1) Publish Work and Balazs drowning pathology of longline turtles taken in Hawaii-based fishery. ~~GB~~
- 2) Prepare manuscript on ECOPATH analysis of green turtle carry capacity X
 Kaloiko-Honokohau long-term study site. ~~GB~~
- 3) Prepare manuscript on stable stoptic analysis (captive greens work already done).
- 4) Institute international collaborative Phase II study pelagic southern stock loggerhead pelagic ecology for continue bycatch mitigation progress. ~~See Risk~~
- 5) Prepare and submit manuscript to journal on nesting density carrying capacity modeling for green turtles at East Island FFS. ~~STACY~~
- 6) Monitor nesting green turtle numbers at East Island FFS during the 2010 season in collaboration with the US Fish and Wildlife Service. ~~GB~~
- 7) Prepare manuscript hawksbill age and growth skeletochronology

157

Dear Travelers,
If you experience difficulty using your JPMorgan travel card while on travel or prior to your departure, you may email Marlena Bowman at this email address:

Fisheries.TravelCardRequest@noaa.gov

Marlena is the NMFS contact and she will check this mailbox after hours as well. Examples of when you may need to contact her is if your card is declined due to the Merchant Category Code for the vendor you are attempting to charge with or if you need a temporary increase in your monthly limit.

52 MidWeek October 28, 2009

HONOLULU PA'INI

LEX BRODIE'S AWARD AND BIRTHDAY

The Lex Brodie's Tire Company Foundation recognized Kaily Preza, the winner of its "Thank You ... Very Much" Award, Oct. 17 on the *Perry and Price Morning Show* at Jimmy Buffett's restaurant. The lively group also celebrated Alexander (Lex) Brodie's 95th birthday.



Janet Teves, Lex Brodie, Evelyn Brodie and Sandy Brodie

Inouye proudly declares he's No

BY HERBERT A. SAMPLE
Associated Press

U.S. Sen. Daniel Inouye, normally not a politician who seeks a lot of attention outside of election years, is proclaiming himself Capitol Hill's king of earmarks.

"It may please you or it may not please you," he told a gathering of business leaders on the Big Island, West Hawaii Today reported. "I'm the No. 1 earmarks guy in the U.S. Congress."

Inouye and his colleagues in the Hawaii congressional delegation have

long defended targeted spending provisions as a prerogative of Congress, to which the Constitution gives the power of the purse. They also contend they can better ascertain what their districts need than executive branch officials.

During remarks Monday to the Kona-Kohala Chamber of Commerce, the 84-year-old senator described his earmarks as transparent and beneficial to the state. He cited the Army's Pohakuloa Training Area on the slope of Mauna Kea, which resulted in significant

upgrades to Saddle Road, once a narrow, unsafe path that connects the east and west sides of the vast island. The senator helped dedicate the newest 6.5-mile section of improved roadway on the day of his speech.

The amount of federal money the eight-term senator has poured into the project could not be determined, but supporters said the improvements could not have been accomplished otherwise.

"It's a huge project for this island and we can't wait to get it completed,"

1 in setting earmarks

8/21/09 HSB
said Vivian Landrum, president of the Kona-Kohala chamber.

• Federal funding for the road has not received much criticism. But other Inouye earmarks have, such as the \$2 million that he and U.S. Rep. Mazie Hirono, D-Hawaii, secured for the Imiloa Astronomy Center in Hilo.

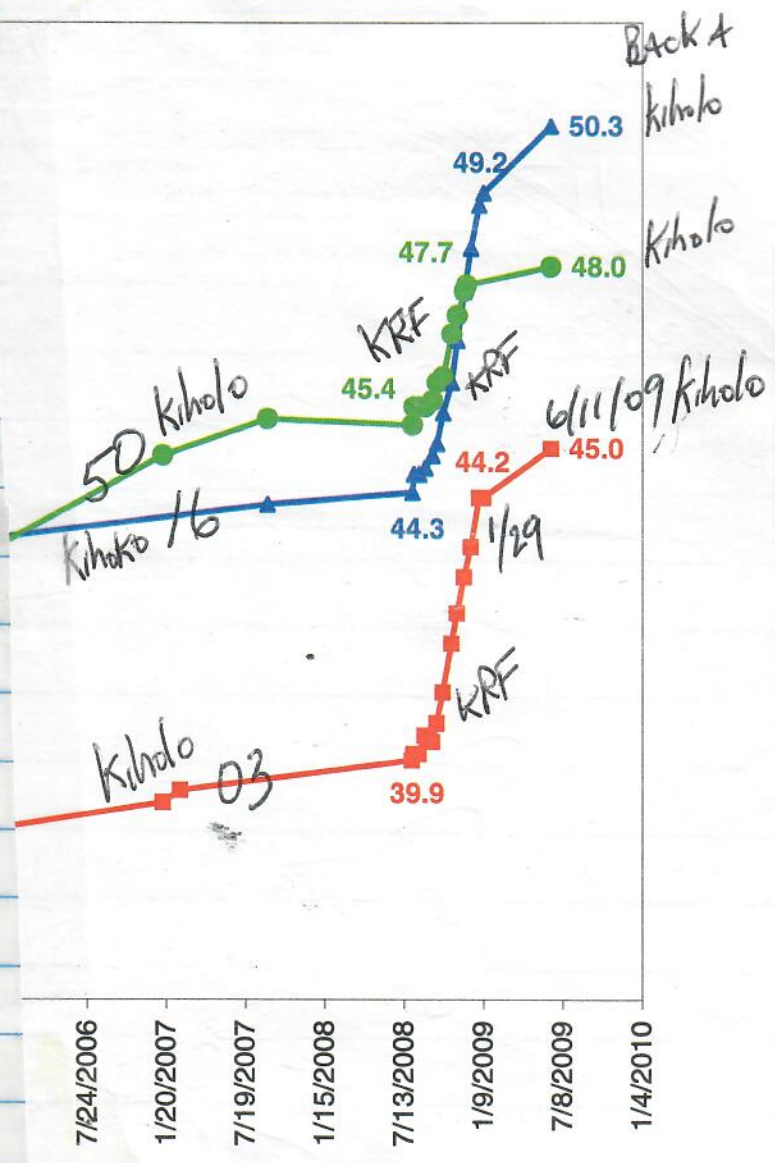
"Why do we need \$2 million to promote astronomy in Hawaii when unemployment is going up and the stock market is tanking?" Sen. John McCain, R-Ariz., said in March.

Inouye sponsored 324

earmarks totaling more than \$2 billion in the 2008 and 2009 appropriations bills, according to the Center for Responsive Politics and Taxpayers for Common Sense, two Washington, D.C. watchdog organizations.

Steve Ellis, vice president of the latter group, lauded Inouye for improving accountability on Senate earmarks, though more reforms are needed. But Ellis cited other comments the senator made about Hawaii projects he wants to finance before he leaves office.

urtles from Kiholo Bay
the PIFSC KRF

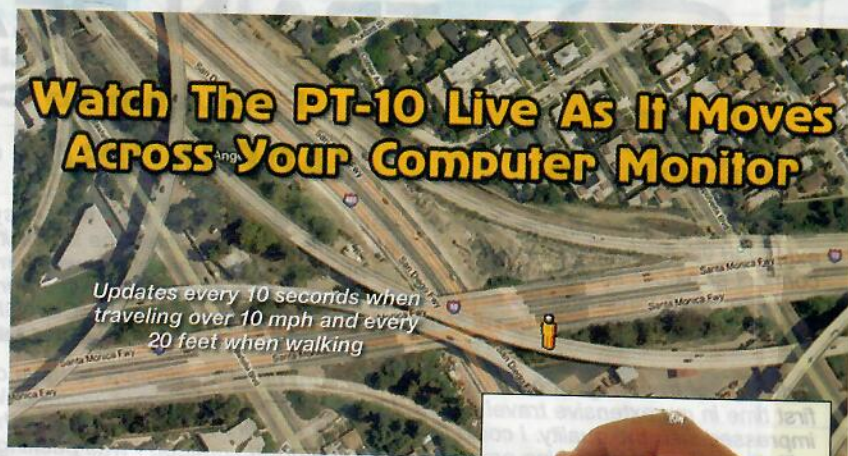


Know where your child, teen driver, loved one or company vehicle is at all times

Whether you're a business owner, concerned family member or parent you can easily monitor the movements of anyone or anything, from anywhere in the world with the Live Trac PT-10. The PT-10 is the easiest to use, most accurate GPS tracking device on the market today. Watch live as the PT-10 moves across your computer screen. You can even set up alerts that send you text messages should your PT-10 exceed certain speeds or deviate into areas they're not supposed to go. The device even logs and plays back everywhere it has been.

VGP102G Live Trac PT-10 \$399.99

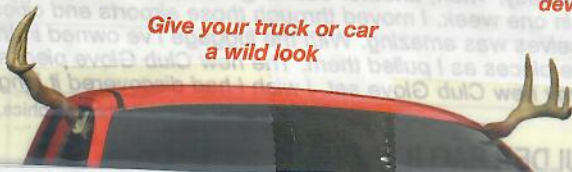
A flat rate, unlimited use monthly service fee of \$39.99 is required.



The PT-10 is the most portable device of its kind



Give your truck or car a wild look



Subject: ISTS special session (ecosystems)

From: Milani Chaloupka <m.chaloupka@uq.edu.au>

Date: Sat, 31 Oct 2009 06:28:08 +1000

To: Karen Bjorndal <bjorndal@ufl.edu>, Alan Bolten <abolten@ufl.edu>, Colette Wabnitz <colette.wabnitz@gmail.com>, Bryan Wallace <b.wallace@conservation.org>, Jeffrey Seminoff <Jeffrey.Seminoff@noaa.gov>

CC: Col Limpus <Col.Limpus@epa.qld.gov.au>, George Balazs <George.Balazs@noaa.gov>

Hi Guys

Here is my abstract for the special ecosystem session at the Goa symposium.. Please get your abstracts to me ASAP.

Does tiger shark predation really affect green sea turtle ecosystem dynamics?

Understanding the ecological role of marine turtles requires an ecosystem-based modeling approach. Quantitative approaches such as simulations models are the preferred choice but this approach requires extensive knowledge of complex ecological processes that is poorly known for most marine species including marine turtles. Qualitative modeling approaches such as graph theory (signed directed graphs and matrix algebra) are a promising new way to address the challenging questions relating to unraveling the ecological role of marine turtles. I demonstrate the utility of this approach by evaluating the ecosystem dynamics of the green turtle-seagrass-macroalgal community in Shark Bay (Western Australia). The community or food web matrix underlying this model comprises 9 states and the direct and indirect interactions between these states: primary producers (seagrass, macroalgae), major consumers (dugongs, green turtles, sea urchins, herbivorous fishes), major predators (tiger sharks, carnivorous fishes) and a detritus pool. I then use a perturbation approach with both density-dependent and independent versions of this model to assess whether tiger shark predation affects the long-term dynamics of this community structure. It was apparent that tiger shark predation has a far greater affect on dugong and consequently seagrass population dynamics rather than the Shark Bay green turtle population. This robust qualitative modelling approach is well suited for developing a better understanding of complex ecosystem dynamics given data-poor and knowledge-vague settings.

N=18 MTRP TAGS Deployed in BAJA

161

ID Code	Species	Date captured	Date deployed	Deployment location	Species	SCL (cm)	COL (cm)	Sex	Tag nos.	Final location	Date terminated	Distance traveled	Transmitting days	Mean Speed of Travel	Capture status
1990	10	n/a	7-Aug-99	Peter Dutton 20.533N 109.955W	CC	58.8	-	U	-	Last signal 22.47N 115.45W	19-May-00	2628 km	286		Control
1969	10	n/a	3-Aug-99	Peter Dutton 23.244N 112.143W	CC	63.8	-	U	-	Last signal 21.60N 111.33W	5-Mar-00	1501 km	214		Control
22130	10	n/a	10-Oct-98	Peter Dutton 32.018N 119.440W	CC	77.1	80.0	U	-	Last signal 30.21N 152.48W	27-Dec-99	3335 km	78	1.8 km/hr	Captive
22131	10	n/a	8-Oct-98	Peter Dutton 31.361N 118.598W	CC	74.5	77.0	U	-	Last signal 30.67N 167.37E	25-May-00	8287 km	229	1.5 km/hr	Captive
22180	SDR	yes	16-Jul-02	Daya, California 24.402N 115.117W	CC	66.0	-	U	"Yuki"	Last signal 25.11N 112.43W	22-Oct-02	1271 km	66	0.5 km/hr	Control
22182	SDR	yes	26-Aug-02	San Juanico, BC 25.191N 112.260W	CC	-	72.0	U	"Esperanza"	Last signal 25.94N 113.18W	12-Dec-02	907 km	108	0.4 km/hr	Control
22278	SDR	yes	3-Aug-02	Cabo San Lucas 26.014N 112.867W	CC	-	60.0	U	"Napli"	Last signal 25.57N 112.61W	22-Jan-03	1630 km	172	0.4 km/hr	Control
22279	SDR	yes	17-Aug-02	Peter Dutton 24.714N 112.325	CC	-	60.5	U	"Socorro"	Last signal 20.37N 110.35W	4-Mar-03	2731 km	103	0.6 km/hr	Control
24748	SDR	yes	2-Dec-00	Peter Dutton 20.162N 113.737W	CC	54.5	57.0	U	697-R, 695-R	Last signal 22.32N 112.24W	3-Mar-01	754 km	91		Control
24759	SDR	yes	7-Aug-00	Peter Dutton 24.034N 111.788W	CC	64.8	73.8	U	660-A, 663A	Last signal 23.64N 111.95W	23-Oct-00	694 km	77		Control
24760	SDR	yes	7-Aug-00	Peter Dutton 24.023N 112.180W	CC	57.0	62.3	U	645-A, 647-A	Last signal 25.01N 112.40W	5-Nov-00	721 km	90		Control
24851	SDR	yes	8-Aug-00	Peter Dutton 22.182N 108.705W	CC	55.5	58.7	U	695-A, 697-A	Last signal 25.40N 111.34W	27-Mar-01	2022 km	231		Control
24852	SDR	yes	2-Dec-00	Peter Dutton 20.003N 114.027W	CC	71.0	75.8	U	694-R, 695-R	Last signal 19.02N 110.97W	11-Apr-01	1588 km	495	0.1 km/hr	Control
22858	Kivala	n/a	2-Jul-04	Baja Mexico Bahia de los Angeles	CC	78.0	-	U	-	Last Position 29.02N 112.45W	23-Jul-04	81 km	27	0.0 km/hr	Net
17435	ST-18	n/a	2-Aug-03	Baja Mexico 25.192N 112.117W	CC	-	-	J	-	Last Position 26.01N 112.54W	27-Jul-04	3003 km	350	0.4 km/hr	Hand
21143	SDR-T16	n/a	9-Aug-03	Baja Mexico 25.193N 112.114W	CC	-	79.0	F	-	Last Position 25.69N 112.34W	8-Jun-04	2213 km	204	0.3 km/hr	Hand
12978	ST-20	n/a	19-Sep-04	Baja Mexico 25.250N 112.283W	CC	-	65.0	U	"Lola", PAT40866	Last Position 26.02N 113.55W	3-Dec-04	137		Hand	
40652	SDR-T16	n/a	3-Sep-05	Baja Mexico Baja - ?	CC	-	-	J	-	Last Position 25.18N 112.12W	7-Sep-05	4		Hand	
16064	SPO2	n/a	2-Sep-05	BajaHoyt	CC	-	88.0	U	LL-277, LL276, "Euphrat"	Last Position 21.37N 159.90W	3-Jan-06	123		Hand	
17710	SPO2	n/a	2-Aug-05	BajaHoyt	CC	-	76.0	U	956-G, 957-G, "Agnus"	Last Position 29.06N 113.01W	25-Oct-06	449		Hand	
42077	ST-20 (1W)	n/a	23-Jun-05	BajaHoyt	CC	-	75.0	U	977-G, 981-G, "Brnmar", PAT33011	Last Position 22.06N 111.00W	6-Apr-06	288		Hand	
42078	ST-20 (1W)	n/a	23-Jun-05	BajaHoyt	CC	-	75.5	U	979-G, 982-G, "Estelena", PAT33010	Last Position 25.69N 112.55W	7-Oct-05	106		Hand	
43079	ST-20 (1W)	n/a	23-Jun-05	BajaHoyt	CC	-	70.4	U	993-G, 994-G, "Miranda", PAT43912	Last Position 25.08N 112.57W	7-Jan-06	198		Hand	
42980	ST-20 (1W)	n/a	24-Jun-05	BajaHoyt	CC	-	74.5	U	989-G, 992-G, "NAZDA", PAT33006	Last Position 25.38N 112.25W	11-Jul-05	17		Hand	
42991	ST-20 (1W)	n/a	24-Jun-05	BajaHoyt	CC	-	66.3	U	980-G, 978-G, "Juliette", PAT43813	Last Position 28.22N 113.28W	21-Oct-05	119		Hand	
42983	ST-20 (1W)	n/a	30-Jun-05	BajaHoyt	CC	-	73.0	U	936-G, 942-G, "Penelope", PAT33003	Last Position 25.54N 112.35W	7-Aug-06	403		Hand	
42985	ST-20 (1W)	n/a	2-Jul-05	BajaHoyt	CC	-	61.4	U	966-G, 964-G, "Joanna", PAT33007	Last Position 26.12N 113.35W	29-Aug-05	58		Hand	
42986	ST-20 (1W)	n/a	2-Jul-05	BajaHoyt	CC	-	70.5	U	951-G, 953-G, "Mada", PAT33009	Last Position 25.18N 112.35W	28-Jun-06	208		Hand	
29766	PSAT	n/a	2-Aug-03	Hoy/Baja	CC	-	-	F	-	Last Position 20-Aug-03	NA	18	N/A	Hand	
40892	SDR-T16	n/a	3-Sep-05	Baja - ?	CC	-	-	J	-	Last Position 25.18N 112.12W	7-Sep-05	4		Hand	
42474	24	n/a	16-Jul-06	Puerto A. Lopez Mateos, BCS, Mexico	CC	-	87.5	F	"Georgia"	Last signal 25.83N 113.25W	12-Sep-06	58		Hand	
42475	24	n/a	16-Jul-06	Puerto A. Lopez Mateos, BCS, Mexico	CC	-	87.5	F	"Georgia"	Last signal 23.66N 113.16W	17-Sep-06	63		Hand	
42476	24	n/a	22-Aug-06	San Juanico, BC 26.014N 112.667W	CC	-	91.5	F	"Lizet"	Last signal 26.22N 113.81W	19-Oct-06	58		Hand	
42477	24	n/a	22-Aug-06	San Juanico, BC 26.014N 112.667W	CC	-	91.5	F	"Lizet"	Last signal 26.72N 114.05W	27-Oct-06	66		Hand	
43811	PSAT	n/a	23-Jun-05	BajaHoyt	CC	-	-	F	-	-	-	-	-	-	-
43813	PSAT	n/a	24-Jun-05	BajaHoyt	CC	-	-	F	-	-	-	-	-	-	-
53006	PSAT	n/a	-	BajaHoyt	CC	-	-	F	-	-	-	-	-	-	-
53007	PSAT	n/a	-	BajaHoyt	CC	-	-	F	-	-	-	-	-	-	-
53008	PSAT	n/a	-	BajaHoyt	CC	-	-	F	-	-	-	-	-	-	-
53009	PSAT	n/a	-	BajaHoyt	CC	-	-	F	-	-	-	-	-	-	-
53010	PSAT	n/a	-	BajaHoyt	CC	-	-	F	-	-	-	-	-	-	-
53011	PSAT	n/a	-	BajaHoyt	CC	-	-	F	-	-	-	-	-	-	-

N=18

DUOS

N=8 PSAT

THOMAS P. GILL / 1922-2009

'Iconic figure' shaped land use, rights laws

BY MARY ADAMSKI
madamski@starbulletin.com

Former Hawaii Lt. Gov. Thomas P. Gill had an impact on society and law in Hawaii and the United States far beyond his few years in elected office.

Gill, 87, who died yesterday, is best remembered for his role in passage of the Civil Rights Act of 1964. During his only term in the U.S. House of Representatives, he was picked to be floor manager, successfully ushering the measure through committees to a vote.

He wrote Title VI, the section prohibiting discrimination in any enterprise receiving federal funding.

"That has had an impact on everything that happens in the United States," said local civil rights advocate Marsha Joyner.

Gill "played a major role in defining the political culture in Hawaii," U.S. Sen. Daniel Inouye said in a statement.



Tom Gill, right, and Nelson K. Doi chatted on December 4, 1973 — the day they made the formal announcement that they would run as a team for governor and lieutenant governor.

STAR-BULLETIN FILE PHOTO / 1973

Like his
...
Gill returned
...
engineered
...
War II politics
...
that brought
...
states of imm
...
tical power
...
by Kamehame
...
"He played
...
organizing th
...
of the Democ
...
preparation
...
victory" in th
...
and political
...
maker Tom G
...
As a state
...
was an autho
...
legislation —
...
will live unde
...
which we ow
...
tion of conse
...
tricts, open s
...
agricultural l
...
compact urb
...
man said.
...
Gill also w
...
for the lease
...
law, forcing l
...
well lots to le
...
passed in 19
...
Former De
...
Chairman Ri
...
Gill "was the
...
voice of the I
...
Party for mo
...
ter century."
...
Gill started

Like Inouye and other veterans, the Honolulu-born Gill returned to Hawaii and engineered the post-World War II political revolution that brought the descendants of immigrants into political power formerly held by kamaaina landowners.

"He played a major role in organizing the infrastructure of the Democratic Party in preparation for its historic victory" in the 1954 election, said political writer and filmmaker Tom Coffman.

As a state lawmaker, Gill was an author of land-use legislation — "the law we still live under today, to which we owe the preservation of conservation districts, open space, agricultural lands, relatively compact urban areas," Coffman said.

Gill also was an advocate for the leasehold-conversion law, forcing large estates to sell lots to lessees, which passed in 1967.

Former Democratic Party Chairman Richard Port said Gill "was the progressive voice of the Democratic Party for more than a quarter century."

Gill started as an Oahu

county chairman in 1952 on his return home from college, and continued to be active in the party, although a long political career eluded him.

In addition to single terms as congressman and lieutenant governor, he served two terms in the state House, holding office when Hawaii became a state.

After losing a bid for the U.S. Senate in 1964, he returned to Hawaii and was appointed by Gov. John A. Burns to head the state Office of Economic Opportunity, which implemented anti-poverty laws he had a role in passing.

"He got Hawaii's grant proposals to Washington while other states were still reading the manual," said Coffman. "He displayed a great capacity to make a telling difference in a short period of time through intellectual vigor, deep conviction and very hard work."

In written statements, U.S. Rep. Neil Abercrombie called Gill an "iconic figure ... tough minded, sharp-tongued and dedicated to Hawaii," and Honolulu Mayor Mufi Hannemann said he "was a seminal figure in Hawaii's history."

Another former Democratic lieutenant governor, Jean King, said, "Integrity is the word that immediately comes to mind ... to make the wisest, most caring decision he could on the side of the people, and integrity in the sense that there would be no personal, unethical shenanigans."

Gill was an individualist, drawing criticism in his day as not being a team player. Although not Burns' favored running mate, he was elected lieutenant governor in 1966. The rift between the two men and their supporters affected the party for years.

After unsuccessful bids for governor in 1970 and 1974, he continued in private law practice, specializing in labor practice and employee rights. His son Tony Gill, also a labor attorney, said the headlines today about the legality of imposing furloughs for state employees are affected by his father's work.

"In almost any conceivable litigation scenario, the law that will be applied was, in large part, developed by my father. He either tried cases, assisted in writing briefs or influenced the text

of the law. I often have the honor now to cite the cases he tried."

In the 1990s, he was appointed by former Gov. Ben Cayetano to head the State Commission on Sexual Orientation and the Law, which advocated legalizing same-gender unions.

His last public advocacy was with Save Our Star-Bulletin, a committee of local leaders who launched a successful effort in federal court that stopped Liberty Newspapers, former owner of the newspaper, from shutting it down.

Gill was born in Honolulu, graduated from Roosevelt High School and enlisted in the Army, serving in New Guinea and the Philippines. He earned a law degree at the University of California.

He is survived by Lois, his wife for 61 years; sons Thomas (Tony), Eric, Gary, Ivan and Timothy; daughter Andrea; brother Lorin T. Gill; 12 grandchildren and three great-grandchildren.

A private family service is planned. The family requests that in lieu of flowers, memorial donations be made to the American Civil Liberties Union.

164
Dr. George Balazs
Marine Turtle Research
Pacific Islands Fisheries Science Center
NOAA, NMFS
2570 Dole Street
Honolulu, Hawaii 96822-2396

Dear George,

I wanted to thank you for personally taking time from your busy schedule to have lunch and share your marine turtle program efforts with me. I have not been to Hawaii in years and it truly remains one of our national treasures. George, you have built a world-class marine turtle research program and most importantly an effective conservation education program. I know you may hear this all the time. The work that you are doing with Hawaiian marine turtles is amazing and the stories are fabulous! I look forward to working with you as we build a marine conservation education program and share some of these great stories with our future guests at the new resort. Thank you again for all of your time and hope that I can repay with a tour of The Seas if you ever venture away from your beautiful island.

P.S. I just love the red rope idea! Simple and easy.

Sincerely,



Jane Davis
Aquarium Curator
The Seas
Walt Disney World Co
2020 North Avenue of the Stars
Lake Buena Vista, FL 32830
Jane.davis@disney.com

Please check out our website at www.disneyconservation.com

165

Fish cutter, peddler became a top Hawaii fishcake maker

BY KAYLEE NOBORIKAWA
knoborikawa@starbulletin.com

Tatsuo Goto advanced from a fish cutter to a fish peddler to the founder of one of the island's largest fishcake manufacturers, Red and White Foods Inc.

"He was a very hard worker," said his son Dennis. "His success was based on his physical and mental strength and his drive. He had to be a driven guy to do all of this."

Goto died May 17 in Leahi Hospital. He was 93.

Born in Paaulo, Hawaii, Goto began working when he was 12 years old for the Hamakua Sugar Plantation and Hawaii Consolidated Railway. He saved enough to travel to Manchuria and Japan, which motivated him to move onto bigger things, and in 1939 he moved to Oahu for better job opportunities, his son said.

Despite the hardships of the Depression, Goto found a job in Honolulu as a fish cutter for M. Otani Fish Co., his son said. After several years in the fish business,



Tatsuo Goto:
The successful fish business operator started working at 12

Goto started his first business, delivering fresh fish to neighborhoods.

As a fish peddler, Goto realized that fishcake was a major item, and created a factory in Kakaako with his wife, Joyce Murata.

With nearly a decade of experience in the fish business, Goto opened the mom-and-pop factory in 1947 with five employees and expanded four times, with 60 workers by the time the company closed in 2004.

Red and White Foods sold fishcake to fish peddlers in the 1950s, but as the company grew larger, so did its clients, which included

supermarkets, restaurants and mainland retailers.

Hideko Murakami of Manoa worked with Goto for more than 25 years and described him as a generous boss and kindhearted man. When asked why Red and White Foods was so successful, Murakami said, "He took good care of his employees. Mr. and Mrs. Goto worked very hard with all the workers."

Goto sold Red and White Foods to Kibun Foods in 1993, and the business closed in 2004 when the Japanese corporation closed its Oahu operations.

In 1953 Goto started Houlau Market on Kēkaulike Street in Chinatown, which provided meat, produce and fish to locals for nearly 30 years.

He is survived by sons Dennis and Larry, brother Kats, sisters Edna Yamamoto and Carol Maeda, five grandchildren and three great-grandchildren.

The visitation will be held at 1 p.m. Saturday at Hosoi Garden Mortuary, followed by the service at 2 p.m. Casual attire is requested.

168

NATIONAL MARINE FISHERIES SERVICE MARS

Personnel Summary/Detail Report

Organization Codes: 30 71 Project: G8LAM2 PMT Task: PMT Vacancy: Both
 Group By: Org Org Level Grouping: 1 FY/Calendar Year/Pay Period: 2009_2009_10

NAT. MARINE FISHERIES SER - OFF OF ASST

ion Code	Project - Task	Employee Name	Job Title	Grade	Salary	Benefits	COLA	Total Labor	Retr Plan	Duty Station	Work Status	PP Hrs	FT Rate
0-00-00	G8LAM26-PMT	BALAZS, GEORGE	ZOOL	ZP-4-3	\$102,670.00	\$29,548.43	\$25,667.50	\$132,218.43	HI-FERS	HONOLULU	FT-PERM	80	49.2
0-00-00	G8LAM26-PMT	HARGROVE, STACY	RES BIOLGST	ZP-3-1	\$59,400.00	\$17,095.32	\$14,850.00	\$76,495.32	HI-FERS	HONOLULU	FT-PERM	80	28.46
0-00-00	G8LAM26-PMT	MURAKAWA, SHAWN	BIOLCL SCI TECHNCN	ZT-3-3	\$55,470.00	\$15,964.27	\$13,867.50	\$71,434.27	HI-FERS	HONOLULU	FT-PERM	80	26.58
					\$217,540.00	\$62,608.02	\$54,385.00	\$280,148.02					
					\$217,540.00	\$62,608.02	\$54,385.00	\$280,148.02					
					# of Employees: 3								
					# of Employees: 3								

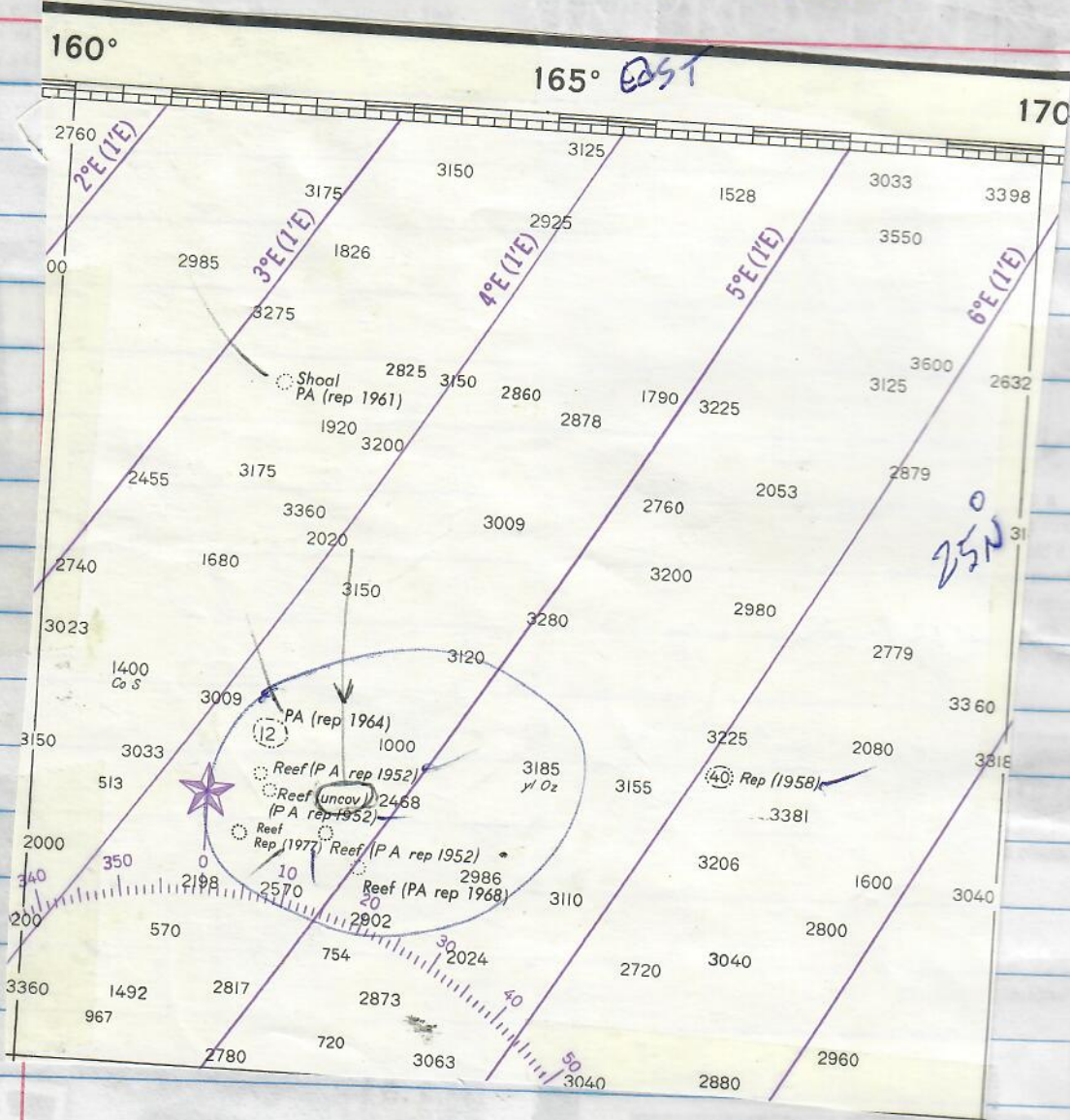
1418 WH

VIG

VIGIA

NORTH PACIFIC OCEAN

167



Shallow spots Reported in The
 Middle of nowhere. 1961, 1964, 1952, 1977,
1968 clustered
 1958

SATELLITE IMAGES NOW?
 Loggersheads by any of these?



THE PRESERVE YOUR MEMORIES PHOTOGRAPH CONVERTER.

This device quickly and easily converts photographs into digital images, allowing you to confidently preserve your memories for generations to come. Photographs are placed in a tray that slides into the converter, and the touch of a button instantly records the image to your PC via the included USB cable. Faster and easier than a conventional scanner, the converter instantly captures the whole image using a 5MP CMOS sensor, the same found in digital cameras. With up to 1,800 dpi resolution, 10 bits per color channel, and automatic exposure control and color balance, clear, accurate digital images are assured. Requires USB 2.0 and Windows XP/Vista. Includes software that allows you to edit, crop, and resize your pictures. Accepts 3 1/2" x 5", 4" x 6", and 5" x 7" photographs. 6 3/4" H x 10 1/2" W x 8 3/4" D. (1 lb.)

74597A \$149.95

Six Additional Photograph Trays.

Two of each size: 3 1/2" x 5", 4" x 6", and 5" x 7".

75255A \$24.95



THE ONE STEP DVD/CD DUPLICATOR.

At the touch of a button, this standalone duplicator makes an exact replica of a DVD or CD in just over six minutes without the need for a PC. Simply place the source DVD in the top tray and a blank DVD in the bottom tray, and this duplicator takes care of the rest. At 16X DVD and 48X CD drive speeds, this device can back up an entire library of home movies and allows you to easily copy a child's piano recital for a distant relative. An ample internal 8 MB buffer (with 2 MB drive buffer) ensures that large files are copied seamlessly and without error. Supports all DVD technology platforms. Not intended for duplicating copyrighted or encrypted material. 7" H x 7 1/2" W x 11" D. (13 lbs.)

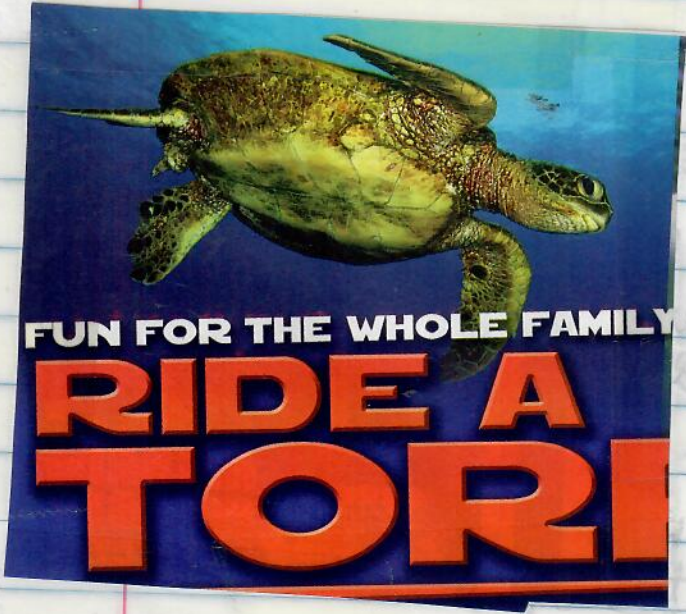
74935G \$349.95

One-Step CD Duplicator. Similar to above, but only for duplicating CDs. The standalone device makes a high-quality replica of a CD in approximately three minutes without the use of complicated wiring or software installation. 6 3/4" H x 7 1/2" W x 11 1/4" D. (11 1/2 lbs.)

72886G \$299.95

Hammacher Schlemmer

1-800-SkyMall (1-800-759-)



THE LP RECORD...
 ...and...
 ...record...
 ...only...
 ...wide...
 ...to...
 ...change...
 ...More...
 ...cassettes...
 ...word...
 ...remote...
 ...up to...
 ...H...
 ...75000...
 ...Two...
 # 34

Wolverine Image...
 • No com...
 • Save im...
 • Color L...
 • 35mm a...
 • 1GB SD...
 Online P...
 OFF...
 YOUR...
 #345163

169



THE LP AND CASSETTE TO CD RECORDER STEREO SYSTEM.

A Hammacher Schlemmer exclusive, this is the combination recorder and stereo system that allows you to preserve your classic vinyl records and cassette tapes by recording them to CDs. It takes only three steps to faithfully transfer an LP or cassette to a digital audio CD-R/RW and at any time during recording you can pause to select only certain songs, turn the album or cassette over, and change albums or cassettes to make compilation recordings. More than just a recorder, the system plays 33s, 45s, 78s, and cassettes. Includes automatic/manual track increment control, record level indicator, record level control, backlit LCD, and remote control that requires two AA batteries. Needle plays LPs for up to 50 hours before requiring replacement. Plugs into AC. 9" H x 19" W x 15" D. (23 lbs.)

75300J \$399.95
Two Replacement Needles. 74925J \$24.95



THE DIGITAL PHOTO TO DVD CONVERTER.

This is the compact recorder that effortlessly copies photographs from your digital camera's memory card directly onto a CD for playback on a DVD player without using a dedicated computer. Photographs are converted into MPEG format and immediately burned onto a CD (CD-RW or CD-R required) which can be placed in a DVD player for slide show viewing using your DVD player's remote control. An album index enables easy photograph selection prior to full-screen viewing. The recorder can also burn photographs onto a CD in JPEG format, allowing you to view the CD's photographs on your computer. The recorder has both RCA and S-video inputs that allow you to connect it directly to your TV and view photographs either from a burnt CD or from an inserted memory card. The recorder can accept Compact Flash, Smart Media, Memory Stick, Secure Digital, Multi-Media Card, and Microdrive memory cards. Plugs into AC. 3" H x 10 1/2" W x 10" D. (1 1/2 lbs.)

75168G \$199.95



Wolverine Film-to-Digital Image Scanner F2D

- No computer required
- Save images directly to SD card
- Color LCD to view and edit
- 35mm and slides
- 1GB SD card included

Online Price \$129.99
OFF -30.00
YOUR COST \$99.99

#345163

[VIEW DEMO ONLINE](#)

Costco.com

B. DVDirect® DVD Recorder - Record Video onto DVD

Save your cherished memories on DVD. The Sony DVDirect Multi-Function DVD Recorder transfers content to DVD from other compatible media quickly and easily. Insert compatible camera memory card or connect compatible camcorder, VCR, or DVR (accessories not included) to record DVDs playable in standard DVD players. For greater clarity and imagery, record high-def AVCHD video from your Sony HD camcorder to DVD, playable in most Blu-ray Disc™ players or PLAYSTATION®3.

Multi-Function DVDirect Recorder • 971035J \$229.99

170

Update as of 3/10/09:

2008-2009 Movement of subadult male green turtle (Argos ID 23513)

released from Paradise Island, Palmyra on August 13, 2008

ST-24 Duty cycle: 2 hr on, 2 hr off SCL: 73.0 cm Days Transmitting: 209 days



★ Start Position
● Current Position



Suit pla

...with only one
...been going around
...and around for me
...The swimming is
...enough for a 5-yr
...what life expect
...30 years.
...Allen was set
...when resea
...either is a black
...with a carbon-fib
...on the back that
...give gracefully w
...the.
...That's a sea t
...what a sea turtle
...Dave Cromwell, a
...watched the tu
...moves at Sea Tu
...Texas not-for-prof
...rehabilitates inju
...the.
...The fin on the s
...ventilates a wetsu
...about three-quar
...body: acts like a
...gives her stability

Suit places turtle in swim

4/9/09
HSB

Associated Press

SOUTH PADRE ISLAND, Texas >> Allison, a green sea turtle with only one flipper, has been going around and around and around for most of her life.

But swimming in tight circles is tough for a 5-year-old turtle whose life expectancy is about 150 years.

Allison was set straight yesterday when researchers outfitted her in a black neoprene suit with a carbon-fiber dorsal fin on the back that allows her to glide gracefully with other turtles.

"That's a sea turtle doing what a sea turtle does," said Dave Cromwell, a worker who watched the turtle's new moves at Sea Turtle Inc., a Texas hot-for-profit group that rehabilitates injured sea turtles.

The fin on the suit, which resembles a wetsuit covering about three-quarters of her body, acts like a rudder and gives her stability. Allison can

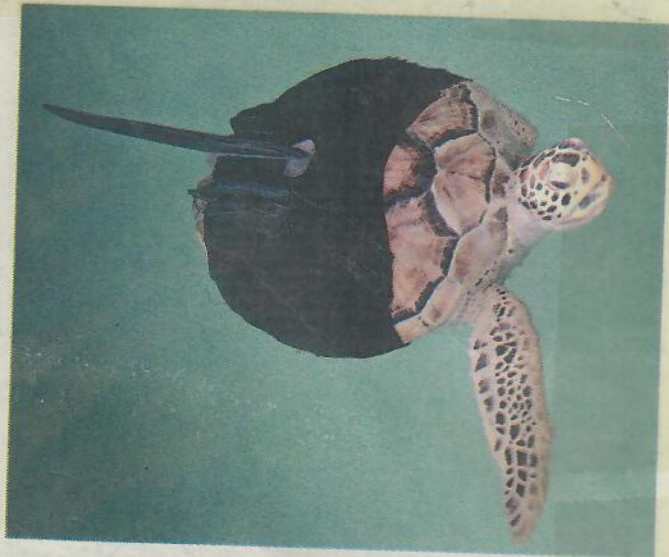
change direction by varying the strokes of her front right flipper, the lone survivor in what rescuers believe was a shark attack.

Sea Turtle Inc. curator Jeff George said turtles with only one flipper are usually euthanized because they would struggle to reach the surface for air. Two-flipper turtles can be adopted by zoos and three-flipper turtles can be returned to the wild.

Allison, who arrived at the rescue center in 2005, was given a slim chance of survival, but she recovered from her injuries and wormed her way into the hearts of her rescuers, who tried to find a way to help the circling turtle.

"The whole reason we're doing this is to improve her quality of life," said Tom Wilson, a 21-year-old intern who thought up the suit.

George said a team of scientists spent months last year trying to develop a prosthetic flipper to counter the thrust of



ASSOCIATED PRESS

Allison, a rescued green sea turtle that has only one flipper, swims with the aid of a fin attached with neoprene at Sea Turtle Inc. on South Padre Island, Texas.

Allison's remaining paddle, but there was not enough of a stump remaining to attach prosthetics.

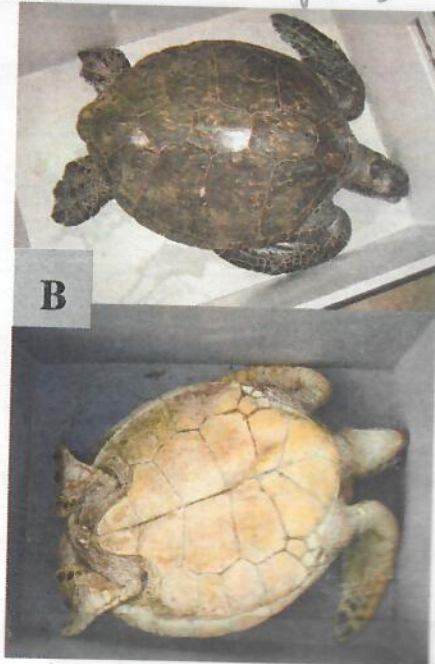
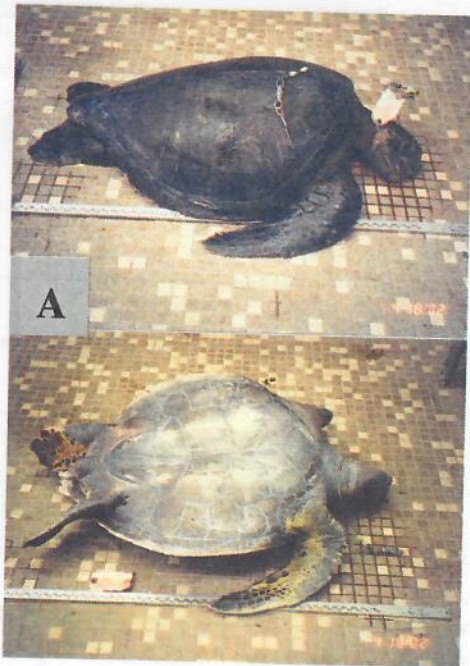
Wilson's idea applied the physics of canoe paddling. The scientists have developed equations that will allow them to tailor new suits and fins because Allison could grow to

around 500 to 600 pounds.

Even though Allison will never return to the sea, the groundbreaking work will make her an "ambassador" for an endangered species, George said.

On the Net
Sea Turtle Inc.:
www.seaturtleinc.com/

Dense et al Pelagic diet



172

E4 INSIGHT: OPINION

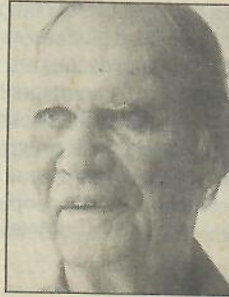
sent 3/2/08 DM 3/2/08

Researchers must honor

IN 2005, the state of Hawaii finally embraced what native Hawaiians have known for generations: the Northwestern Hawaiian Islands are a delicate, sacred ecosystem that must be respected. The state took a visionary step forward establishing the first state marine refuge in the NWHI and requiring that human activity there "do no harm" to this fragile ecosystem. In 2006, the federal government followed suit, establishing the Papahānaumokuākea National Marine Monument. These protected areas rely on permits to control the human footprint up there.

But today more and more people are going to the NWHI for research, education, even sightseeing. Any time you set something off limits, people want to go there; this is the irony of our success in establishing protections for the Northwestern Hawaiian Islands. Already this year, permits have been granted to allow unlimited numbers of people to go to the NWHI to do any kind of dredging, discharging and taking, even recreational fishing. Researchers have violated their permits and we have seen little will for enforcement. This is wrong. We must change our attitude about this place entirely — there should be no human footprint there.

We all have a stake in this. The reef complexes of the Northwestern and main Hawaiian Islands are only 100 miles apart. If we leave it be, these remote islands can be what replenishes our waters with resources overexploited and overharvested in the main Hawaiian Islands today. And one day, perhaps, the waters of



GATHERING PLACE

Louis "Buzzy" Agard

Hawaii might again be a refrigerator — a robust food resource for the people of these islands.

When the "do no harm" rule is ignored, the good work for which this area was set aside is not being done. For too long, we have allowed too many human footprints to be left in this delicate place. Whaling, commercial fishing, coral harvesting — I was up there for 10 years, and I can tell you: the place can't take it, and it doesn't need it. When you take stuff from there, when you damage it, it does not come back. I looked around and I could see the place was telling us, "Go home already." So I turned the boat around, set the bearing to 90 degrees and headed back to Honolulu. And since then, I have been trying to tell people, "Hey it runs out. It's fragile. When you take from this place, it doesn't come back." I'm saying it again today.

Millions of dollars have been set aside by the federal government, and with good intentions. But money is a magnet for peo-

173

Every year tons of marine debris wash up on the shores of islands in the Northwestern Hawaiian Islands Marine National Refuge. This pile waits on Sand Island at Midway Atoll for transport to Honolulu.

ple. They see the money and their first question is, "What can I propose to do up there?" A scientist will say to the Hawaiian fisher, "Take only what you need," but in his research practice he doesn't heed his own advice. This is not why the people of Hawaii and the world fought so hard to protect this place.

Currently, there is no man-

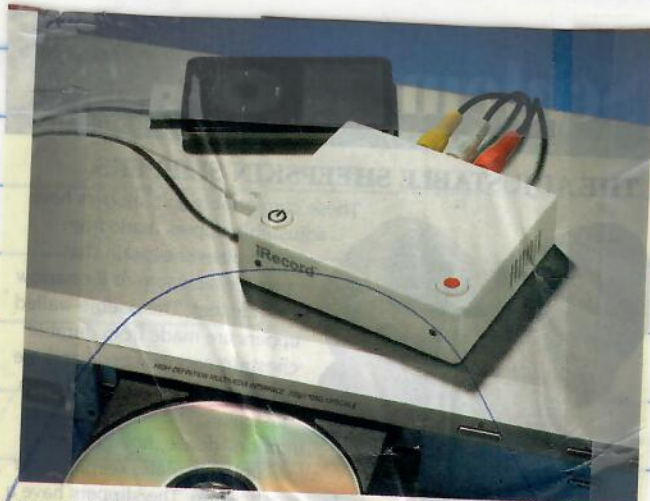
agement plan for the Northwestern Hawaiian Islands, no conservation goals and no way to say what research is needed to fulfill those conservation goals. No one has answered to the public the question: "What research is needed for the Northwestern Hawaiian Islands?" Without a fundamental change in our attitude about this place, the human footprint

will continue to grow and eventually destroy this place.

The Northwestern Hawaiian Islands is a place of great hope for the future of the resources in our oceans, and it is for this reason that we set it aside. Let us honor the commitment we made to protect this fragile place as a true puuhonua.

Louis "Buzzy" Agard, a founding

board member of KAHEA: The Hawaiian-Environmental Alliance, is a former commercial fisher who served on the Western Pacific Fishery Management Council for more than a decade. In 2001, he was honored by President Clinton at the establishment of the NWHI Coral Reef Ecosystem Reserve. He still serves on the citizen advisory council to that reserve.



THE ONE TOUCH ANY MEDIA IPOD® UPLOADER.

This device, the first of its kind, converts any type of video or audio, including cassette tapes, vinyl records, television shows, and VHS tapes, directly to an iPod at the touch of a button. The device allows you to preserve your audio and video memories without having to rely on a conversion service or risk long-term damage to the original medium, and no computer or special software is required. The converter plugs into any audio or video device equipped with RCA connections and S-Video (standard on nearly all A/V components) with its included audio/video cables. Simply push the record button, and content is converted to digital MP3 (audio) or MPEG4 (video) format—three hours of 320 x 240 resolution video content takes up approximately 1GB—and is stored immediately onto an iPod (video iPod required for video content). Data can also be uploaded to a USB flash drive or USB hard drive plugged into the converter's USB port; it automatically detects if it has attached an iPod or USB key. Plugs into AC.

73745A

\$199.95

174

HARRY ENNUETI
FINCH
2009

THE ADVENTURERS

-
There are some who are born to adventure,
Who never can stand still --
Whose great desire never expires,
To see what ~~is~~ beyond the hill.

-
Be it the Seven Seas or the Carribees,
Or the hills of Mongoloon --
The thirst for thrills is never stilled,
Whatever the phase of moon.

-
It ~~is~~ almost a curse, some might say,
As the horizon lures them on.
The normal life with family and wife,
Is not their way or song.

-
But still we need them it is said,
How else could the new be found?
How could those undiscovered lands,
Be found to be around?

-
It ~~is~~ true, sometimes they ~~are~~ rough and tough,

And not like other folks.

But that's what makes them different --

For civilization makes them choke.

-

They have strange goals, where sun or cold,

Deters them not at all.

The stronger the opposition --

The Higher seems the call.

-

Some may ask, why is this so?

Why is their life so strange?

What is the lure of the deep unknown?

And why is their life untamed?

-

They often die in a foreign land,

Where no one cares at all --

Or they take their leave on a stormy sea,

Or from a mountain fall.

-

And so the answer lies within,

The Soul and its Destiny --

Why each are different, and especially those,

Who seek Life's Mysteries.

Line Islands - Wikipedia, the free encyclopedia

Line Islands

From Wikipedia, the free encyclopedia

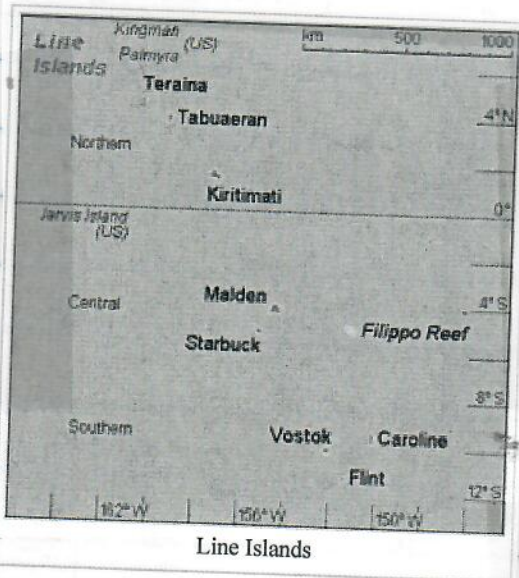
Coordinates: 0°0'S 157°0'W (<http://stable.toolserver.org/geohack/geohack.pl>)

(Redirected from Northern Line Islands)

The **Line Islands**, or **Equatorial Islands**, are a group of eleven atolls and low coral islands in the central Pacific Ocean south of the Hawaiian Islands, eight of which belong to Kiribati, while three are United States territories grouped with the United States Minor Outlying Islands. Those that are part of the Republic of Kiribati are in the world's furthest forward time zone, UTC+14. The time of day is the same as in Hawai'i, but the date is one day ahead. The time is 25 hours ahead of some other islands in Oceania.

All the islands in this group are or were claimed by the United States except Filippo Reef.

The group is geographically divided in three subgroups, Northern, Central, and Southern Line Islands. The Central Line Islands are sometimes grouped with the Southern Line Islands. The table is listing the islands from north to south.



18 Meet Hawaii's Super-Sized Sea Turtles

It's as common to see a giant Green Sea Turtle as it is rare to catch a look at the nearly extinct Hawksbill Sea Turtle. Both species are considered endangered, but the Hawaiian hawksbill population is estimated at less than 30 nesting turtles. Named for its sharp, beaklike mouth, a hawksbill can weigh up to 270 pounds, much smaller than the hulking green sea turtle, which sometimes weighs in at 400 pounds.

Hawksbill turtles are known for their beautiful exterior shell, often referred to as "tortoise shell," which was exploited for many years by the fashion industry and has driven the species almost to extinction.

Kahalu'u Beach Park, about six miles south of Kailua-Kona on Ali'i Drive, is a good place to come face-to-face with sea turtles. They also are commonly seen at Honaunau Bay near the Place of Refuge.

Green Sea Turtles, unlike Hawksbills, are often featured in films about Hawai'i, and regularly appear live on ocean excursions. Watch for them feeding on seaweed that grows on the rocks in shallow areas. Called honu in Hawaiian, the turtles are referred to as green not for the color of the algae growing on their backs, but for the color of their meat. Yep, it's green.

Look but don't touch. Protected by the Endangered Species Act, it's against the law to harass both Hawksbill and Green Sea turtles in any way, including touching. So if you see one when you're snorkeling, give it 10 to 15 feet of space and enough room to surface and breathe.

Line Island

Line Islands

The lagoon

atypical atoll,

Only three isla

2005), of whic

Teraina. The t

Kiritimati is th

were annexed

with Tabuaeran

functioned bet

Copra and "Pet

Retrieved from

Categories: Lin

Hidden categor

lacking sources



Line Islands - Wikipedia, the free encyclopedia

Line Islands 514,74

* The lagoon areas marked with an asterisk are contained within the island areas a typical atoll, inland waters completely sealed off from the sea.

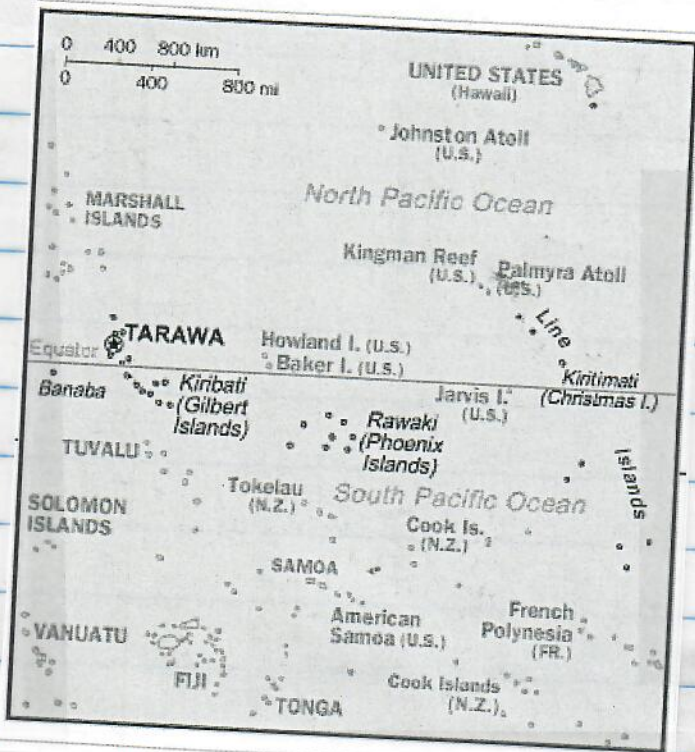
Only three islands are inhabited, with a total population of 8,809 (census of 2005), of which 5,115 are on Kiritimati, 2,539 on Tabuaeran, and 1,155 on Teraina. The total population of these three atolls in 1900 was about 300.

Kiritimati is the largest atoll in the world in terms of land area. The islands were annexed by Britain in 1888 with a view to laying the Pacific cable with Tabuaeran (then Fanning Island) as a relay station. That cable functioned between 1902 and 1963 except for a short period in 1914.

Copra and "Petfish" are the main export products (with seaweed).

Retrieved from "http://en.wikipedia.org/wiki/Line_Islands"
Categories: Line Islands | Islands of Kiribati | Islands of the United States
Hidden categories: Articles lacking sources from July 2008 | All articles lacking sources

of the previous column because they are, unlike in the case of



178

Local News

Too close to honu
Turtle feeding, petting reported at Keaukaha beach

by **Bret Yager**
Tribune-Herald Staff Writer

Published: Friday, January 30, 2009 9:53 AM HST

Print Page

Call it harassment or too much love; either way, it isn't the pono way to hang with the sea turtles.

At Carlsmith Beach Park in Keaukaha, people are feeding handfuls of grass to the green sea turtles, swimming with them, nuzzling up to them. Even getting nipped by them.

Two honu in particular have gotten so used to handouts of fresh grass they come swimming whenever they see people approach, said resident Tonia Jordan, who lives in the adjacent Mauna Loa Shores condominiums and visits the sheltered lagoon area daily.

"We'd like to have it where the tourists and everyone else can enjoy the turtles. It's just that they feed them, and the turtles are starting to nip at them," said Jordan, who said there needs to be a clear sign near the shoreline pointing out the activity is prohibited.

Green sea turtle populations have been slowly declining worldwide for decades. Since 1973, they have been protected under the federal Endangered Species Act. They are considered threatened -- defined as "any species which is likely to become an endangered species within the foreseeable future."

The interaction is not only illegal, but it's bad for the turtles. Grass is not a natural food source and it can affect their metabolism and the functioning of their digestive systems. Also, they can become dependent on people for food, reducing their ability to forage in the wild. "The turtles swim up, looking for food, and they follow you around. It's gotten out of hand," said park user Mapuana Peterson, who is trying to organize volunteers from Mauna Loa Shores to mount an information campaign for the folks who come down to the park.

In the past month or so, turtles have gathered in crowds around the steps leading into the water at the park, and so have the people, she said.

"Our hope is to educate the public so we're not putting the honu at risk," she said.

Last week, she observed three green sea turtles at the stairs with people feeding them grass. Other turtles soon gathered around for the feast.

"By five o'clock, there were 10 turtles and people were still petting and feeding them," she said.

Jordan even watched one man use a bundle of grass tied to a rope to lure a turtle right out of the water.



Click Photo to Enlarge

Lisa Koda, a visitor from California, feeds tufts of grass to a pair of green sea turtles that were interacting with swimmers Tuesday in a sheltered lagoon at Carlsmith Beach Park. Koda was following the lead of other swimmers who were offering grass to the honu. During the half hour or so she was in the water, Koda and her two acquaintances were joined by a third green turtle, and one of the turtles nipped her on the abdomen without causing any bleeding. - William Ing/Tribune-Herald

The end of activity
attempted to hear

"They're a threaten
harassment," Kahia

About green sea tur
consists of jellyfish

Kahapo said he'd
People who see so

so close to l

227-7795. On week
at 643-3567.

For violations such
Fisheries Service a

E-mail Bret Yager a

179

That kind of activity is out of line, said John Kahiapo, a Department of Land and Natural Resources education specialist who was astonished to hear the news.

"They're a threatened species, so you're not supposed to get close to them or harass them, and that would be a form of harassment," Kahiapo said. "And you're not supposed to feed any form of marine life."

Adult green sea turtles are herbivores, meaning they eat only plants, but juvenile green sea turtles are carnivorous. Their diet consists of jellyfish and other invertebrates.

Kahiapo said he'd inform DLNR rangers and ask them to keep an eye on the area.

People who see someone feeding turtles can advise them of the law. In East Hawaii, they can also call 327-7780, 969-5067 or

so close to honu

<http://www.hawaiitribune-herald.com/articles/2009/01/30/loca>

327-7795. On weekends, holidays, and after hours, they can call the state Division of Conservation and Resources Enforcement at 643-3567.

For violations such as killing, harming or harassing a turtle, people can call the Enforcement Division of the National Marine Fisheries Service at 961-7291.

E-mail Bret Yager at byager-@hawaiitribune-herald.com.



CANBERRA, AUSTRALIA

5-23-09
HSB



ASSOCIATED PRESS

The Tasmanian devil, a snarling, fox-size marsupial made notorious by its Looney Tunes cartoon name-sake Taz, was listed in Australia as an endangered species yesterday because of a contagious cancer that has wiped out most of the wild population. Above, Tasmanian officials released this picture of one of the normally feisty creatures suffering from a cancerous growth on its face.

180

2009 for GCB

Item	Description	Qty	Rate	Total
IRIDIUM 9555	Iridium Satellite phone <u>9555</u> , includes SIM CARD AC Wall Charger One High Capacity Battery International Adapters Cigarette Lighter Adapter Ear Piece Auxiliary Antenna Auxiliary Antenna Adapter Leather Case Instruction Manual One Year Warranty	1	1,540.00	1,540.00
IRIDIUM PREPA...	Iridium Prepaid 500 minute plan, valid 12 months from activation, includes 500 minutes. Minutes expire after 12 months. Options to keep unused minutes: - add another years service - add one months service for \$167.50 and get additional 75 minutes - add 200 minutes valid for 6 months at \$500	1	620.00	620.00
IRIDIUM ACTIV...	IRIDIUM ACTIVATION FEE \$50, includes SIM card	1	50.00	50.00
			Subtotal	\$2,210.00
			Sales Tax (0.0%)	\$0.00
			Total	\$2,210.00

Edward Kissel, President
 ekissel@mobilesource.com

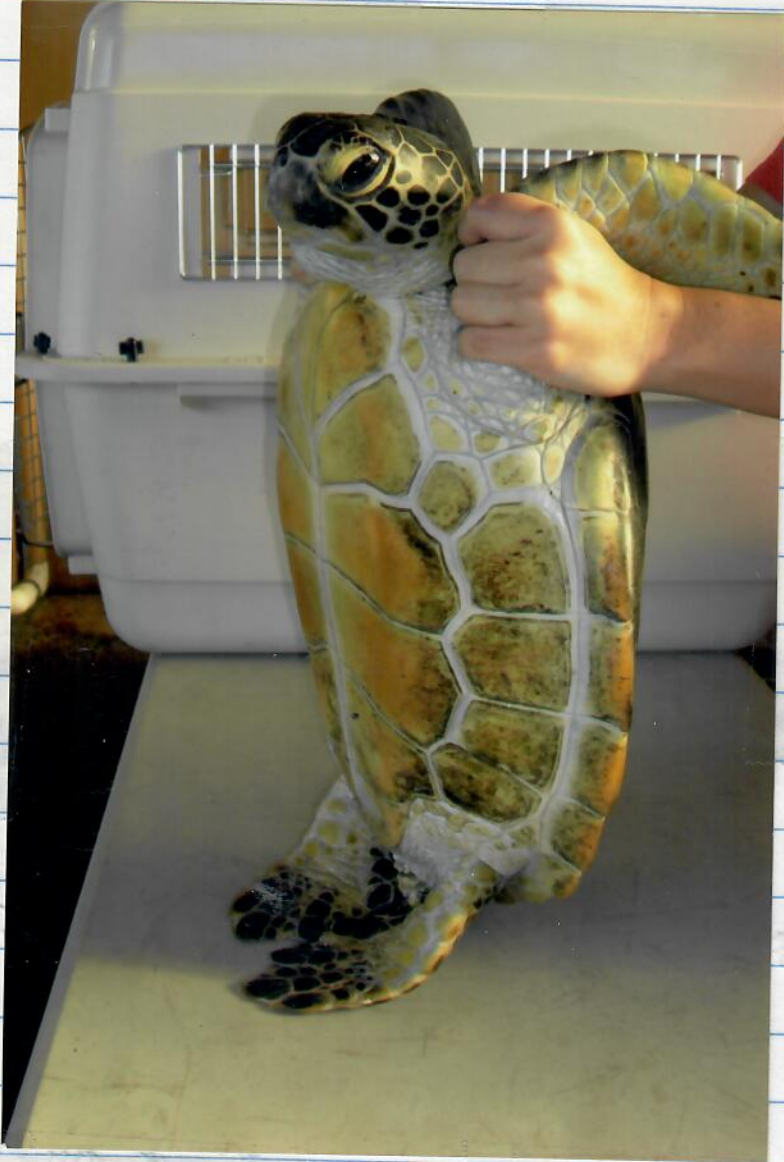
Mobilesource Corp.
 3500 NW Boca Raton Blvd #603
 Boca Raton, FL. 33431

Phone: 561-416-7224 Boca Raton
 904-567-5916 Jacksonville
 239-243-9487 Ft. Myers
 305-508-4043 Miami

Fax: 561-416-9716

181

MT 16



AT TIME OF RETURN TO KIHULO BAY

182



RETURN TO KITHOLO BAY

WHICH COUNTS MOST BEST? MASS OR SCL?

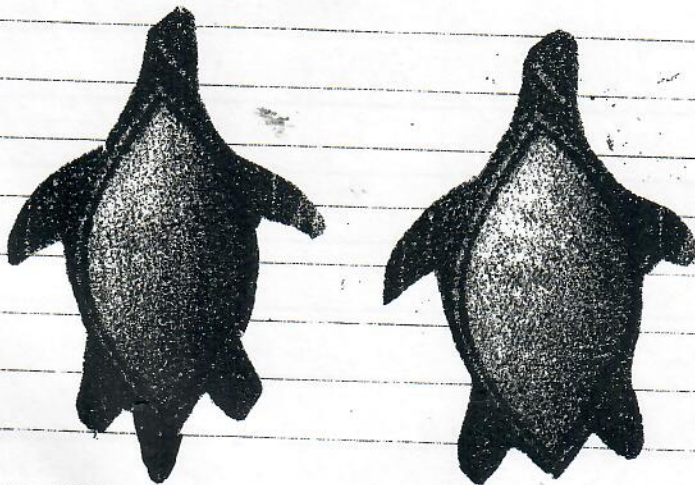
has
variable of
got fill
see growth
paper WCSTC
Smithsonian Proceedings

need Chronological

Full-time MTRP Employees

Last Name	First Name	JIMAR	NOAA	Years
Balazs	George		1980 - Present	(28) years
Bromwell	Karl	1991 - 1992		(1) year
Brunson	Shandell	11/97 - 08/00		
Carnevale	Maria	05/07 - Present		(1) year
years Choy part time	Barry			
Connor	William	04/07 - Present		
years Finn part time	Michelle			
Forsythe	Robert			
Herren	Richard	12/04 - 02/05	never off probation	
Hooven	Cody	07/03 - 06/06	06/06 - 05/07	
Kubis	Stacy	01/06 - Present		2.5 years
Marshall	Darren	11/05 - Present		2.5 years
McBride	Bridget	08/03 - 10/05		2.5 years
Miya	Russell	Aug-94		
Murakawa	Shawn	8/93 - 10/02	5/92 - 8/93, 10/02 - Present	(15)
Nurzia-Humburg	Irene	04/07 - Present		1.5
Parker	Denise	10/94 - Present	9/91 - 9/94	14 years
Siebert	Erin	06/04 - 10/07		3 years
Wilbanks	Cori	03/05 - 04/06		
years Winton	Bryan			

122



"F
is
im
sig
on
in
are
wo
Anw
Coor
adv
Asso
Dign
Adva
Rich
abov

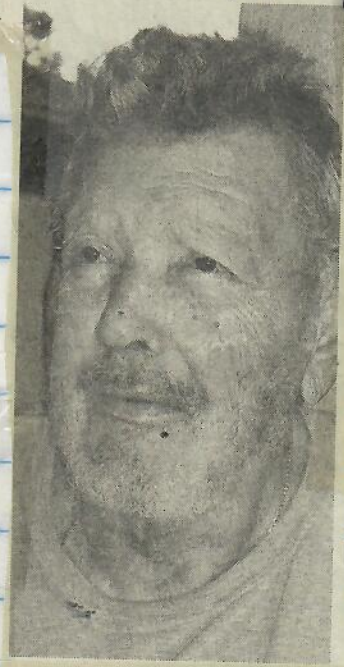
185

RICHARD MARKS / 1929-2008

Kalaupapa resident promoted park plan

AB ASB 12-11-08

By Mary Adamski
madamski@starbulletin.com



COURTESY OF PAT BOLAND

"His legacy is huge, his impact is significant, not only for people in Hawaii, but around the world."

Anwei Skinsnes Law
Coordinator for leprosy advocacy group *International Association for Integration, Dignity and Economic Advancement*, speaking about Richard Marks (pictured above)

281

RICHARD MARKS lived out his life in a remote corner of Hawaii, but he had a global impact.

His advocacy led the state to rescind the century-old quarantine order that sent more than 8,000 leprosy patients to Kalaupapa, and stimulated the federal government to make the tiny Molokai peninsula a National Historic Park, administered by the National Park Service.

Marks, 79, died Tuesday in Kalaupapa. A memorial service on Oahu is being planned.

Marks spoke to international officials and medical professionals at International Leprosy Conference meetings in Europe and India, and at a 1997 Quest for Dignity exhibition at the United Nations. He met with Pope John Paul II, Mother Teresa of Calcutta, India, and the royalty of Belgium.

And day after day for nearly 40 years, he told his story and the history of his unique hometown to people aboard his Damien Tours bus, an educational and personal experience remembered by thousands of people from around the world.

"God loves you for all you have done to help people to know and love all those afflicted with leprosy," Mother Teresa said in a message to Marks in 1996, when the New York-based Damien Dutton Society for Leprosy Aid presented him with its annual Damien-Dutton award. She and President John F. Kennedy were among the previous awardees.

Marks was a strong proponent of sainthood for Father Damien DeVeuster and Mother Marianne Cope, who went to Kalaupapa in the late 19th century to give physical and spiritual support to banished victims of the disease. Pope John Paul II held a private audience in 1983 with the late Ozzie Bushnell, a Hawaii author, Franciscan Sister Mary Laurence Hanley and Marks to hear their advocacy for the Cope sainthood cause.

Marks would tell visitors and news reporters that as far as he was concerned, the two Catholic missionaries were already saints and that the Vatican just needed to catch up. Pithy critiques of the state, federal and even Vatican bureaucracies were part of his tour commentary.

Born in Puunene, Maui, Marks saw his father, older brother and younger sister contract leprosy. They were sent to Kalaupapa, where his grandmother, an aunt and an uncle had been banished earlier.

"He ran away," said Patrick

Boland, a longtime friend. "He knew he was going to be next." Marks was 15 when he joined the Merchant Marine in 1945. "He knocked around the world and the mainland a bit," said Boland.

He was diagnosed with the disease in 1948 on his return to Hawaii, and, except for a few years at the federal hospital in Carville, La., he lived in Kalaupapa ever since.

Boland, who is retired from the state Comprehensive Health Planning Agency, said Marks "was a major actor" in putting an end to quarantine that was first imposed in 1866. "The fact that it happened at all is due to Richard and his outspokenness."

In a 1968 interview in the former Beacon magazine, Marks "talked about the way patients were still being treated by the state, the separation and confinement, even though the drugs (that contain the disease) had been around since the 1940s. Most countries had

already changed their policies. It was a very controversial interview," Boland said.

The state Health Department convened a citizen committee to consider the situation. Their recommendation led the state Legislature to rescind the forced isolation of patients in 1969.

"His legacy is huge, his impact is significant, not only for people in Hawaii, but around the world," said Anwei Skinner Law, international coordinator of the International Association for Integration, Dignity and Economic Advancement, an education and advocacy group for former leprosy patients around the globe.

"When we went to the 1984 International Leprosy Conference in India, at that time it was unusual for a former patient to go to these things." She said Marks and Bernard Punikaia gave the medical and public health officials attending "an insight into their experience of being isolated for a long time." At a later conference in the Netherlands, Marks and his wife, Gloria, told about their experience using tourism as a vehicle for education about the disease.

"Richard literally changed the course of history in Kalaupapa," said Valerie Monson, of Ka Ohana o Kalaupapa, a non-profit group of residents and their families and supporters.

"His crowning glory was to have brought in the National Park Service," said Monson. "He was concerned that something be done to preserve the history for other generations."

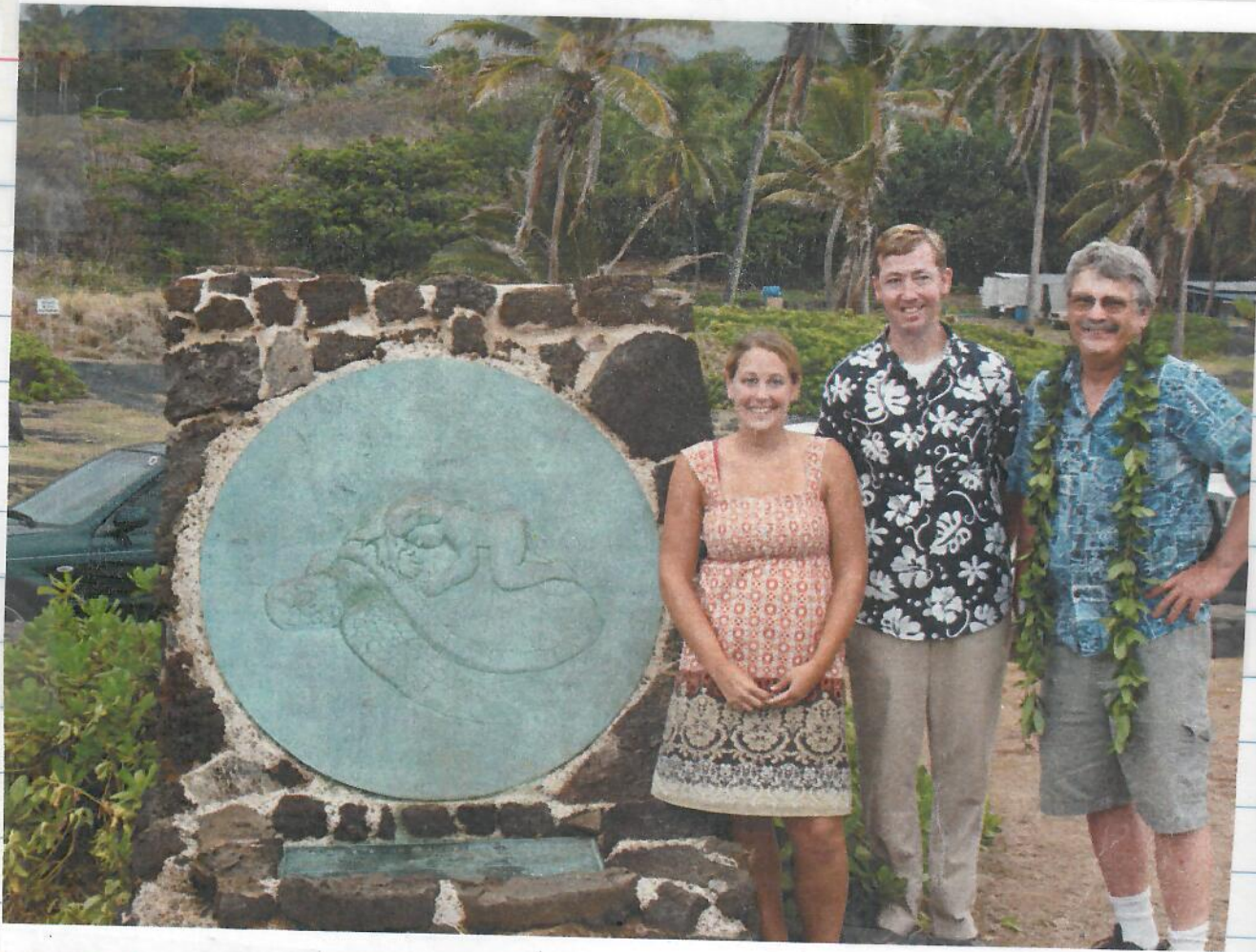
She said Marks attended a National Park Service public hearing on Molokai at which the subject was a planned Big Island historic park. He invited the committee members to come down to the Kalaupapa peninsula, which they did the next day. It set the ball rolling, eventually leading the late U.S. Rep. Patsy Mink to introduce federal legislation that established the National History Park in 1986.

Richard and Gloria Marks were a rare example of successful private enterprise in the settlement, which has been government-administered since the beginning. They started Damien Tours in 1966. State law requires that day-trip visitors to the peninsula be guided.

Maui County presented the Markses in 2006 with a lifetime achievement award for small-business owners.

The couple was married in 1962. They had three daughters and two sons who were raised outside Kalaupapa by Gloria Marks' parents. State law forbade patients to keep their children.

181



MANLAND
Chinese
Scientist

Date: Sat, 24 Jan 2009 14:47:12 -1000
From: Minling Pan <Minling.Pan@noaa.gov>
To: George H. Balazs <gbalazs@hnlabs.nmfs.hawaii.edu>
Cc: w ym <wildlif66@yahoo.com.cn>
Subject: Re: About the Turtle person from China

Hi George,

The Mr. Turtle (Dr. Yamin Wang) have left for the Chinese New Year. Here is his email address: <wildlif66@yahoo.com.cn> and the postal address: Shangdong University at weihai, College of Ocean, No. 180 Wen Hua Xi Lu, Weihai, 264209, Shangdong Province, China.

2/12/09 HSB



**EDWARD
ALVEY WRIGHT**

Edward Alvey Wright was born January 27, 1909 in Richmond, Virginia. His forefather came over to Jamestown in 1607 as a cabin boy and was adopted by chief Powatan as an interpreter for the colonists.

Alvey was educated at the University of Virginia, the U. S. Naval Academy, MIT, and the Harvard Business School. He was a retired Rear Admiral in U. S. Navy with 35 years of service.

During his Navy career and afterwards, he was:

- technical director of the U. S. Navy's ship laboratory
- designer of aircraft carriers and other combatant warships
- Production Officer of the Mare Island Naval Shipyard
- Commander of the Charleston Naval Shipyard
- Commander of the Pearl Harbor Naval Shipyard
- Director of the Department of Transportation, State of Hawai'i, under Governors Burns and Ariyoshi
- builder of the Reef Runway adjacent to the Honolulu International Airport,
- re-designer of the H-3 Interstate freeway to its current alignment
- and an advocate of inter-island ocean ferry transportation including SeaFlight and the SuperFerry.

He was a longtime member of the O'ahu Country Club and the Outrigger Canoe Club. He was also active in the Rotary Club of Honolulu.

Alvey was married for 71 years to Dorothy Virginia Russell of Baltimore, Maryland. They lived on the beach in Lanikai, Hawai'i for 34 years. Dot passed away May 3, 2004. Alvey is survived by his son, Rusty Wright, and by Rusty's wife, Pattye.

Always an organized and prepared man, Alvey wrote the above obituary before his recent passing on February 5, 2009 at the age of 100 years and 9 days. He will be deeply missed by his extended family and by his many friends. Services will be private. Borthwick Mortuary is handling the arrangements. Well planned and well done, dear Alvey.

IN LOVING MEMORY OF

Eileen Patricia O'Brien-Brown

October 8, 1939

November 2, 2009

An Old Irish Blessing

May the road rise up
to meet you
May the wind be
always at your back
May the sun shine warm
upon your face,
May the rain fall soft
upon your fields
And, until we meet again,
May God hold you
in the palm of his hand.

Amen

National Cremation Society
Funerals - Cremations - Gatherings
Oviedo, Florida

KAREN
MOTHER
MATCHES

TOOLS AND T

Backing up data as easy as pushing a button

Backing up computer files is important.

Everyone knows this, but because of the cables, software downloads and clunky external drives involved, it's no wonder many users don't do it.

Of course, all it takes is one waterlogged laptop to make users wish for the day when they were smart enough to make a copy of their data. **San-Disk**, the maker of flash storage cards, has introduced what it hopes will be a more inviting solution.

Instead of cables, its Ultra Backup USB flash drive relies on a dedicated and clearly marked backup button. Press it and the job is done. The USB drive does the rest by searching your computer for the necessary updates.

In addition to its one-step backup, the drive also offers two layers of protection for

your files by using password-protected access control and Advanced Encryption Standard technology. The Ultra Backup USB flash drive is available in models from 8 gigabytes (\$40) to 64 gigabytes (\$200) and will be released in April — just in time for digital spring cleaning.

Digital camera recalls days of Polaroid shots

The **Polaroid** film cameras may be dead, but you can still have instant photos with the company's new PoGo Instant Digital Camera, a compact snapshotter with a built-in printer that lets you capture and immediately print 2-by-3-inch images.

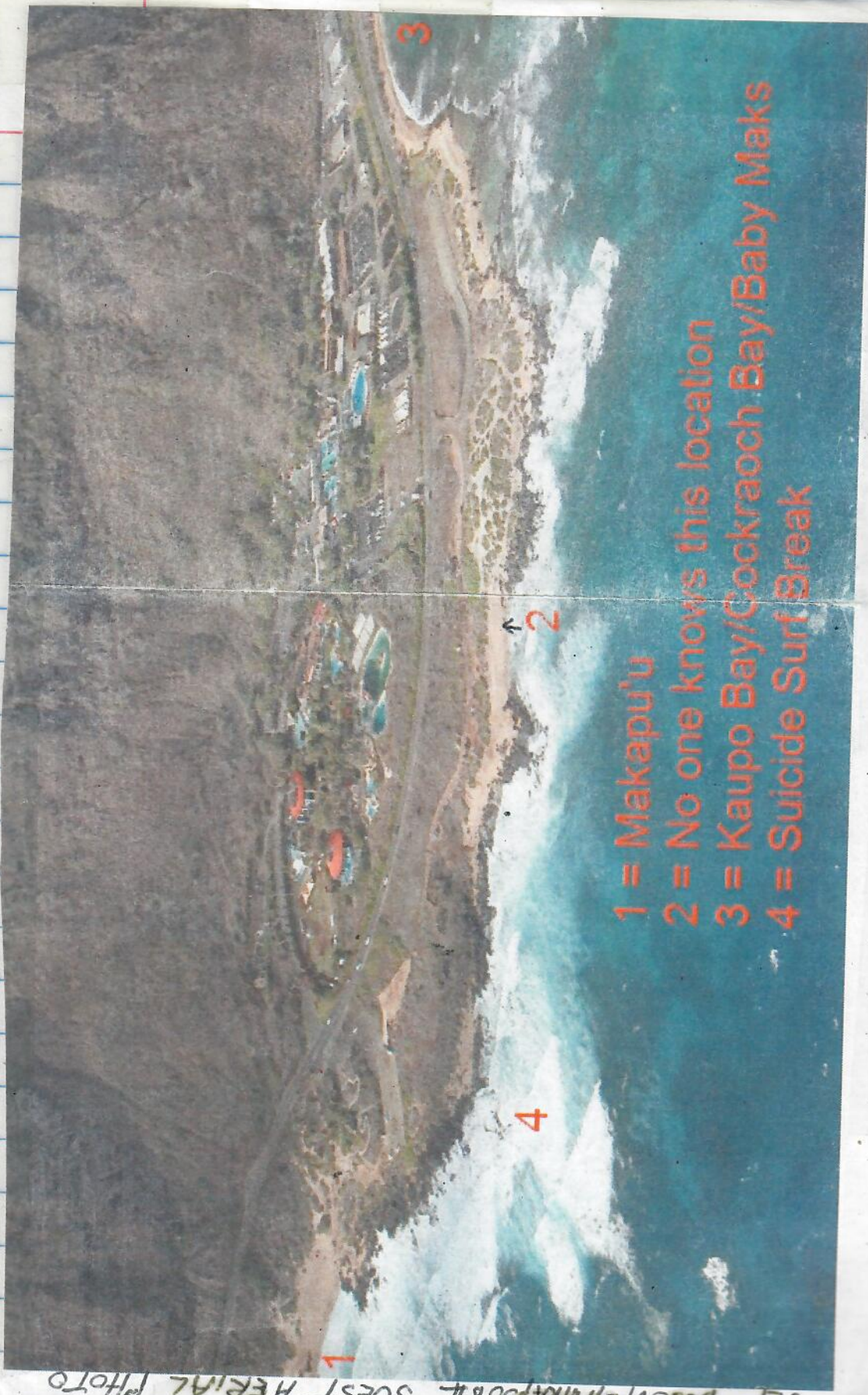
The \$200 PoGo camera is a follow-up to Polaroid's PoGo Instant Mobile Printer, which appeared on store shelves in July. Like the printer, the combination device uses Zink printing

technology, an inkless system that uses heat-activated dye crystals to produce an image in about 60 seconds. The photos have an adhesive backing, which enables them to double as stickers.

The PoGo camera has a 3-inch LCD for reviewing images before you print. That is essential because the paper will set you back \$12.99 for a pack of 30, or about 43 cents for each photo.

The device looks a bit clunky but weighs only 10 ounces, which is pretty slight when you consider there is a printer inside. Don't expect great images or outstanding prints from a device in this price category, though you will get the instant gratification that Polaroid made famous many decades ago. Look for it in stores in March.

New York Times



- 1 = Makapu'u
- 2 = No one knows this location
- 3 = Kaupo Bay/Cockraoch Bay/Baby Moks
- 4 = Suicide Surf Break

"SLP" Beach = Makapu'u SEEST AERIAL PHOTO

1/1/09 HSB

Botanist championed Hawaii's native species

By Gary T. Kubota
gkubota@starbulletin.com

WAILUKU >> A crusader for the preservation of native Hawaiian plants has died.

Rene Sylva, who helped found the Native Hawaiian Plant Society on Maui, died Sunday at his home in Paia. He was 79.

Sylva, a native Hawaiian, was a widely respected fisherman and self-taught botanist who frequently spoke at public meetings in the 1980s about the need to preserve and nurture native plants.

"Rene was a person of high intellect and of passion," said

"He was a kind of spiritual leader for young botanists. ... All of the conservationists on the island and other islands had a great respect for him."

Robert Hobdy
Retired state forester, on Rene Sylva

Ed Lindsey, a native Hawaiian cultural expert. "Whenever he worked on a project, he didn't go for the easy fish. He went for the deep things that really mattered."

Lindsey said Sylva almost single-handedly brought forth a public consciousness of endemic plants to the government and community to the point where state officials are now trying to grow native

plants along Maui's highways.

Lindsey said Sylva hiked virtually all the valleys and mountains on Maui and knew the location of many native plants, sometimes discovering new species.

One of them was a small white daisy, which was named *Tetramolopium sylvae*.

Retired state forester Robert Hobdy said Sylva had a "real eye for things" on his many hikes in the 1970s and 1980s.

"He spent a lot of time in the field. ... He'd go out and he'd walk around, and he'd find things that other people might miss," Hobdy said.

Hobdy said that when botanists came to Maui, they would call on Sylva.

"He was a kind of spiritual leader for young botanists. ... All of the conservationists on the island and other islands had a great respect for him," Hobdy said.

Sylva worked as the groundskeeper at the now-defunct Maui Zoo in Wailuku and began planting native foliage to the point that it also became known as a botanical garden, Hobdy recalled. When the zoo closed, the area became the Maui Nui Botanical Gardens.

"The garden and the landscaping part was always well done. He did it all without any support. He just took an interest and did it."

Memorial services are scheduled for 9 a.m. to noon Sunday at the Maui Nui Botanical Garden, followed by a potluck lunch.

Sylva is survived by sister Vera Demello, brothers Randal "Buster" and Cecil "Tootsie" Sylva, and 50 to 60 nieces and nephews.

Rene SYLVA

193

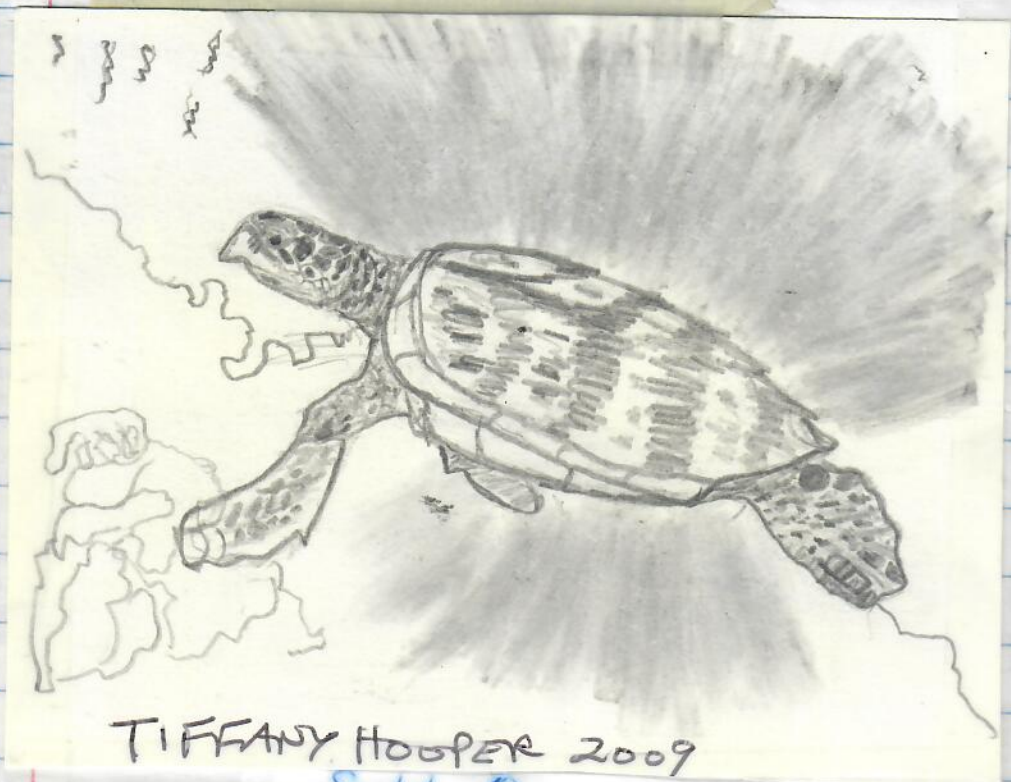
Saddam supporter sentenced

BAGHDAD >> Saddam Hussein's former foreign minister, Tariq Aziz, was convicted and sentenced to 15 years in prison today for his role in the 1992 execution of 42 merchants accused of price gouging while Iraq was under U.N. sanctions. The conviction was the first against Aziz, who for years was the former regime's public face to the West.

Saddam's cousin "Chemical Ali" al-Majid also got a 15-year prison sentence in the case. Two of Saddam's half-brothers, former Interior Minister Watban Ibrahim al-Hassan and director of public security Sabawi Ibrahim, were sentenced to death.

Associated Press

HSB 3/11/09



Sachiko Oya
 Blk2 Kaki Bukit Ave.1 #03-06/08
 Kaki Bukit Industrial Estate, Singapore 417938
 (DISCO HI-TEC(S)PTE LTD)

THURSDAY 1/29/09

HSB

Enact restrictions on cadavers shown in public exhibits

A Barnum & Bailey-style exhibition of skinless, mummified human bodies from China completed a seven-month stretch last weekend at Ala Moana Center, but any return appearance should undergo scrutiny. Enactment of legislation sponsored by Rep. Marcus Oshiro and approved this week by a House committee is needed to assure respect for the dead.

The legislation will not interfere with the display of bodies at funerals or the exhibit of cultural artifacts that include human hair or teeth.

More than 10 million people across Europe and the United States have seen "Bodies ... The Exhibition," an assortment of cadavers configured in life-like poses. The exhibition, sponsored by Atlanta-based Premier Exhibitions, closed at Ala Moana and opened last week in Dublin, prompting calls for examination by the Irish Human Rights Commission.

The corpse preservation involves removing fluids and replacing them with chemical polymers, or plastic. It was developed by Gunther von Hagens, a German scientist and competitor of Premier whose company has taken in more than \$200 million by displaying corpses over the past decade. Premier agreed three years ago to pay \$25 million for a reliable supply of bodies from China.

But whose bodies were they? Premier has maintained that it uses unclaimed and unidentified bodies given by police in China to the Dalian Medical University in northeastern China. A university spokesman says it has no knowledge of the bodies' origins.

"The grim reality is the Premier Exhibitions has profited from displaying the remains of individuals who may have been tortured and executed in China," New York Attorney General Andrew M. Cuomo concluded last May after investigating the exhibition that opened in Manhattan in 2006. He said Premier "was unable to demonstrate the cause of death or the origin of the decedents."

In a settlement with the state of New York, Premier agreed to "obtain written documentation demonstrating the source of each body and body part, the cause of death and the decedent's consent to the use of his or her body."

The settlement requires Premier to disclose on its Web site and in advertisements that it is unable to confirm that the bodies and parts that were displayed in New York "were not, or did not belong to, Chinese prisoners who may have been victims of torture and execution." To this day, Premier's Web site states, "Premier Exhibitions cannot, however, independently guarantee the origin of the specimens."

Even documentation that is provided might be suspect, as shown by birth certificates provided by the Chinese government in a controversy over young girls who won gold medals in women's gymnastics at last year's Olympic Games in Beijing.

"In China, what becomes fact is what the government says is fact," notes Gay Mitchell, a member of the European Parliament from Dublin.

HSB EDITORIAL

1-30-09 HSB
Display of bodies shows lack of humanity

I strongly agree with the sponsors of legislation concerning the exploitation of human bodies for commercial display, and hope it passes (Star-Bulletin,

Jan. 28). I found even the advertising for this exhibition to be offensive. It is disgraceful to exploit the remains of the dead in a commercial manner. It is disingenuous to claim this was an "educational" exhibit — if you want this kind of an education, get it at the University of Hawaii, not at the mall. I boycotted Nordstrom because this exhibit was next to the store.

It is astounding to read the comments from those who condoned this incredibly tasteless commercial exploitation. I have no quarrel with the science community, which needs to work with donated human bodies (particularly those donated willingly by people before their deaths) for their work. But this ... this was not about science or learning. This was about making money and demeaning humanity.

Frances Cypher
Kaneohe

PAGE A7

TUESDAY | February 3, 2009

'BODIES' BILL
Questionable exhibit should be prohibited

I applaud the proposal before state lawmakers introduced by Rep. Marcus Oshiro and reported in the Jan. 28 article by Peter Boylan. I found the exhibition of "Bodies" reprehensible and completely agree with Rep. Oshiro that the sale and display of human bodies, without proving where they come from and getting consent from the deceased, should be prohibited. I am glad an elected official is trying to stop such presentations.

These "Bodies" came from the Communist Chinese police and could very well be those of persecuted Christians and other religious faith groups. China is listed in the top 10 persecutors of Christians in the world by Open Doors International.

It is time those outside of China said "no and not here" to "Bodies."

DOUGLAS WAITE | Honolulu

TRAVEL DATES	PLACE	PURPOSE	EST. COST	PRIORITY	Justification
January 29, 2005 (GB)	Kiholo, Hawaii	Field sampling	250.	H	Time sensitive long term research
February 3 (GB)	Kilauea, Kauai	FWS 100 year ceremony	250.	H	Request PIFSC for turtle research
5 (GB)	Kahalo, Hawaii	Field sampling	200.	H	Time sensitive long term research
23-24 (GB)	N. shore, Oahu	SNARE TAGS DEPLOY	450.	H	Time sensitive turtle investigations
18-19 (GB)	Kahalo, Maui	Basking turtle assessment	450.	H	Commitment to FWS and DNR Biologists
MARCH 18 to (GB)	JAPAN	Bycatch and Research	7000.	H	Time sensitive international commitment
April 3 (GB)	JAPAN	Bycatch and Research	7000.	H	Time sensitive international commitment
APRIL 23-30 (GB)	KAPALO, Hawaii	Field sampling	1,600.	H	Time sensitive commitment
28-30 (SH)	" "	graduate student support	500.		Time sensitive commitment
MARCH 18 (GB)	Kahalo, Hawaii	Field sampling	250.	H	Time sensitive long term research
May 11-13 (GB)	PMRF, Kauai	field sampling	800.	H	Time sensitive commitment
6 (GB)	Kiholo, Hawaii	Field sampling	250.	H	Time sensitive long term research
June 8 (GB)	Mohokai	Field sampling	250.	H	Commitment to volunteer group
16 (GB)	West Maui	Field sampling	250.	H	Time sensitive long term research
23-25 (GB)	SNFSC & Job, California	Collaborative Research	1500.	H	Commitment to research colleagues
July 3-4 (GB)	West Hawaii	TED Educational outreach	450.	H	Commitment to research colleagues
13 (GB)	Kula, Hawaii	Field sampling	250.	H	Time sensitive long term research
17 (GB)	Kahalo, Hawaii	Field sampling	250.	H	Time sensitive long term research
23 (GB)	Kahalo	Field sampling	250.	H	Time sensitive long term research
August 12-14 (GB)	West Maui	Deploy TDR Trackers	750.	H	Time sensitive long term research
September 8 (GB)	Molokai	Field sampling	250.	H	Time sensitive long term research
14 (GB)	Kahalo, Hawaii	Field sampling	250.	H	Commitment to volunteer group
14 (SH)	" "	" "	" "	" "	Time sensitive long term research

#10,200 Domestic
 #7,000 International
 #17.2K

KAJIKI
 #203, 7-28, FUJIMI-CHO
 NAKA-KU, NAGOYA 460-0014 JAPAN

29/11/05
 MCB

29 Feb 05
MCB

VISITOR PASS

BALAZS, GEORGE

808.286.2899

SPONSOR-LT BALAZS

CA/6BVB851

22JAN09



PASS EXPIRES AT MIDNIGHT ON DATE INDICATED ABOVE

197

2 MONDAY 1/19/09

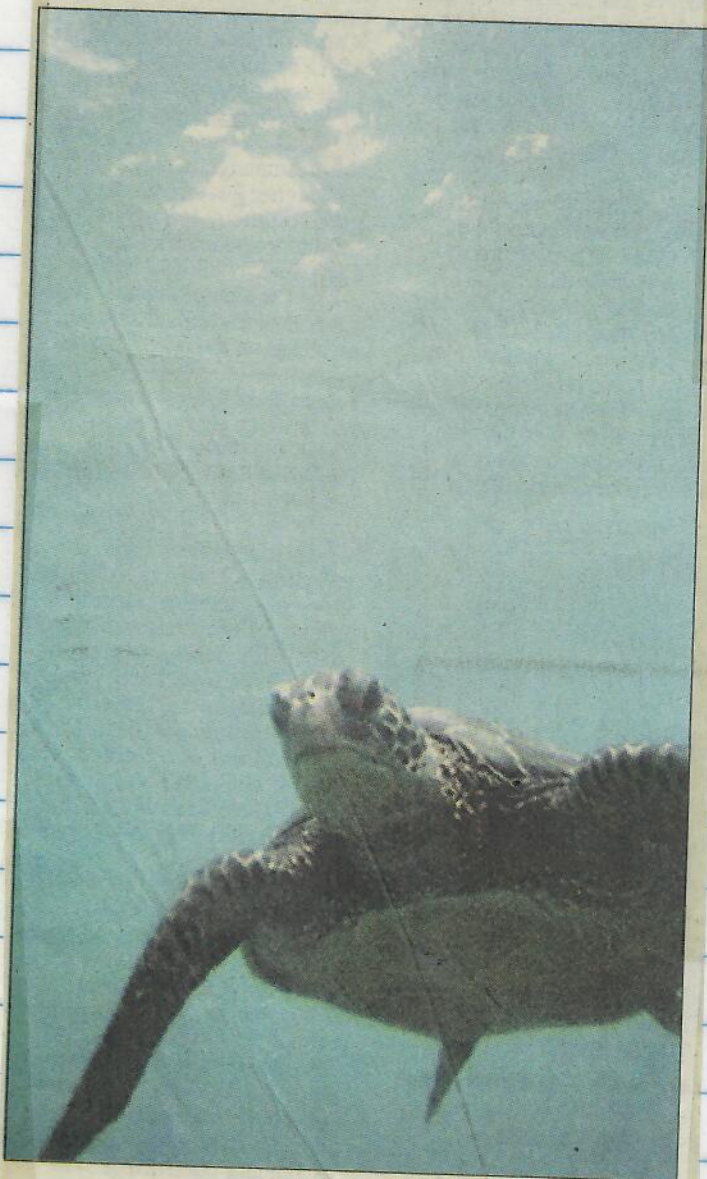


On display in "Origami Do Experience" are creations by an international selection of artists. They include "Hawksbill Sea Turtle," left, by Satoshi Kamiya of Japan, folded out of paper made by Kamiya and exhibit curator Michael LaFosse. The piece was given to LaFosse after Kamiya's 10-month apprenticeship. "Mask," center, and "Rooster" were designed and folded by Eric Joisel of Paris. Many of the pieces are for sale at the gallery.

MRS. Miyuki Kajiki #203090-5873-1573
NAGOYA 460-0014 JAPAN FUJIMI-CHO, NAKA-KU

A8 — Tuesday, February 3, 2009

Honu happiness



Nathan Eagle/The Garden Island

A green sea turtle swims recently at Tunnels on the North Shore.

199

Nozomi
TOUYAMASAKI

3-65-606

KOUYU U

MINATO-KU

NAGOYA-SHI

AICHI-KEN

JAPAN

455-0013

0422222222
0422222222

TAMMY SUMNER
P.O. Box 10001
PMB 370
SAIPAN, MP 96950

Julie Rocho-Levine
Manager of Marine Animals
267 South Kalahaheo Ave.
Kailua HI. 96734

2004
D. Itaru Uchida, Director
Port of Nayoya Public Aquarium
1-3 Minato-Machi
Minato-Ku
Nagoya, 455-0033

Ms. Shannon Graham
11-3891 11th Street
Volcano, HI 96785
808-989-8784

Mr. Marc R. Rice
Hawaii Preparatory Academy
65-1692 Kohala Mountain Road
Kamuela, Hawaii 96743-8476

From: ~~Bo Alinski~~
~~1673 Halama~~
~~Kih E. Ete~~
~~96783~~

Dr. Eleanor Sterling
CBC
American Museum of Natural History
Central Park West at 79 St.
NY, NY 10024

Zenia Moura
Pacific Islands Fisheries Science Center
1601 Kapiolani Blvd., Suite 1110
Honolulu, HI 96814-4700

Simon Chan
26A, Block 4
Bayshore Towers
Ma On Shan,
Hong Kong

Dr. Ruth Utzurrum
Dept. of Marine and Wildlife Resources
PO Box 3730
Pago Pago, American Samoa 98799

Ms. Hui-Ling Lin
9F, No. 166, Chung Hsiao East Rd. Sec. 3
Taipei, Taiwan, 106

Ka-shing CHEUNG,
WFC/M, AFCD,
7/F., Cheung Sha Wan Govt. Offices,
303 Cheung Sha Wan Road,
HONG KONG.

Sheri Saari
Park Ranger
U.S. Fish and Wildlife Service
Kilauea Point National Wildlife Refuge
P.O. Box 1128
Kilauea, HI 96754

81
0980356528
0426875813

From: Mon, 05 Jan 2009 11:03:11 -1000
From: Irene Nurzia-Humburg <Irene.Nurzia-Humburg@noaa.gov>
From: George H. Balazs <gbalazs@honlab.nmfs.hawaii.edu>
Subject: My work starting date... as per your phone message

Date: Mon, 05 Jan 2009 11:03:11 -1000
 From: Irene Nurzia-Humburg <Irene.Nurzia-Humburg@noaa.gov>
 To: George H. Balazs <gbalazs@honlab.nmfs.hawaii.edu>
 Subject: My work starting date , as per your phone message

Irene Nurzia-Humburg, the successful applicant for the JIMAR Marine Turtle
 Research Associate position, will commence employment within MTRP on April 2,
 2007.

1 亨 亨 亨
 12
 文

TEACHER

HO HUI-WEN

1057 SEC 1 CHUNG-SHEN RD.

TA CHIA TOWN

TIATUNG COUNTY

TAIWAN

9	10	27	30	43	54	63	72	81	90	99	108
10	20	30	40	50	60	70	80	90	100	110	120
11	22	33	44	55	66	77	88	99	110	121	132
12	24	36	48	60	72	84	96	108	120	132	144

Table of Time Measure

seconds	=	1 minute
minutes	=	1 hour
hours	=	1 day
days	=	1 week
weeks	=	1 calendar month
months	=	1 year
years	=	1 common year
leap years	=	1 leap year
centuries	=	1 century

Table of Length

1 meter (m)	=	1,000 mm (100 cm.)
1 millimeter (mm)	=	0.001 m
1 centimeter (cm)	=	0.01 m
1 decimeter (dm)	=	0.1 m
1 decameter (dkm)	=	10 m
1 hectometer (hm)	=	100 m
1 kilometer (km)	=	1,000 m

Table of Paper Measure

1 ream	=	1 quire
1 bale	=	1 ream
1 bale	=	1 bale

Table of Weight

1 gram (g)	=	100 cg	=	1,000 mg
1 milligram (mg)	=	0.001 g		
1 centigram (cg)	=	0.01 g		
1 decigram (dg)	=	0.1 g		
1 decagram (dkg)	=	10 g		
1 hectogram (hg)	=	100 g		
1 kilogram (kg)	=	1,000 g		

HAWAIIAN
BLOOD LINE

Number of turtles

	Maui	Oahu
Emaciated	28	220
Excellent	12	17
Fair	29	92
Good	20	42
Poor	4	37
Scavenged	0	0
Unknown	0	8
Total	93	416

Percentage of turtles

	Maui	Oahu
Emaciated	30%	53%
Excellent	13%	4%
Fair	31%	22%
Good	22%	10%
Poor	4%	9%
Scavenged	0%	0%
Unknown	0%	2%
Total	100%	100%

Subject: Kona BC

	n	%
Emaciated	26	35
Excellent	4	5
Fair	16	22
Good	15	20
Poor	10	14
Scavenged	2	3
Unknown 1	1	
Grand Total	74	

Tadunay 5 2000