

JUNE 2011 - MAY 2012

Mead.

COMPOSITION
GEORGE BALAZS

OFFICIAL® 100 sheets • 200 pages
9¾ x 7½ in / 24.7 x 19.0 cm
wide ruled • 09918

MeadWestvaco Consumer & Office Products, Dayton, Ohio 45463 Made in Vietnam © 2008 MeadWestvaco Corporation

808-395-6409



FIRST DAY EVER IN TAIWAN

mead®
AUGUST
23
1994

SQUARE
 DEAL

PURPLE
 ORCHID



"DIA HO FA"

SCHEDULE

HORAIRE / HORARIO

BRIGHT
 BRILLIANT
 SOUND

BAG 2011 FIRST DAY EVER HONGKONG

	1	2	3	4	5	6	7	8
TIME HEURE HORA								
MONDAY LUNDI LUNES								
TUESDAY MARDI MARTES								
WEDNESDAY MERCREDI MIÉRCOLES								
THURSDAY JEUDI JUEVES								
FRIDAY VENDREDI VIERNES								
SATURDAY SAMEDI SÁBADO								
SUNDAY DIMANCHE DOMINGO								



(Janet)

Keiyen Zhang's son

Husband (Apple) Lai Si-Yuan "Thankful and express gratitude to your source of everything you have"

IACUC NEW MEXICO

PAGES 59-83

Chinese saying "you need to remember always your source of water when you drink"

(Ocean-name) water

new DARA 21094 HIGHWAY 65584
 ST. ROBERT, MO

AYA

CHINA

Feb 3 TPE

Feb 8 HK

Feb 18 HNL

WAIT LIST

Feb 19

Sunday

LIZETTE OLA DURAND

①

See page 28 next HK trip.

Hawaii

"Where are all the people coming from?"
"The Death of a turtle" April 29, 2012 Sunday
808-388-0464

UNLOCK 70955920

VOICE MAIL & PIN 6363

JOHN EHRLSMANN

7667 Acoma TRAIL

YUCCA VALLEY, CA 92284

AMA GATA

HEAVEN

DIRECTION

BOB JUSTMAN telecon 10/2011 = 662 Flights
TO TERN OVER 22 YEARS

As per
JoAnne
Pettigrew

Leif Anderson - Anahulu turtles

old timer

Rolly?

PAGE 90 11-11-11 1111 PMS

Beverly KNESTEL
171 Lee Road 2037
SALEM, AL 36874

Makai Animal Clinic

420 Uluniu Street
Kailua, HI 96734

808-262-9621

E. Alan Zane, DVM
Wendy Asato, DVM
Joe Herzog, DVM
Mina Khoi, DVM



Hours:
M-F 8AM - 6PM
Sat 8AM - 5PM
Sun 8AM - 2PM

820-844-1666
official PP#

9/8/11

7/9/16

Oknawa Churaum
www.kayakala.com

E P Page

George Balazs@noaa.gov

Ma Gong *8

Commerce Learning
<https://doc.learn.com/noaa>

Gether *8 Again

NFC Home Page

< <https://www.nfc.usda.gov/personal/eplogin.aspx> >

YVETTE JOAKIM
KAI RENN

Maastads
3829 12th Ave S
Mpls, MN 55407

The Blooms
6162 Makaniolu Place
Honolulu, HI 96821

LIL MAC MILLAN
HC 01 - BOX 235
KAWAIAKI, HI 96748

DARA

WALMART

ROUTING # 124 085 024

DIRECT DEPOSIT #
918187 00937852 030

The Hargrove
14040 SW 72nd Ave
Palmetto Bay, FL 33158

HONGKONG
THINGS =
PAGE 28

DARA Hicks
21094 Highway Y.
ST. ROBERT, MO 65584
(573) 202-5323

CHRISTIAN & STEFANI
40 PIRATES COVE DRIVE
SWANSBORO, NC 28584

Nancy Cinsley
1402 Greenville Way
THE VILLAGES, FL 32162

Less than

< 6000 records

STRANDINGS data - daily the most
time consuming - come in daily
+ necropsies.

Fieldwork and nesting - pulse activities
entered a game in but could be
use a week, are a worthy ocean capture
set aside ^{a year} one month to enter nesting data

Nesting & nearshore 65000 records.

ALAN HONG
321 KALAMAILU
HONOLULU, HI 96825

37010 N. LINDSEY RD. GREENVILLE WY
THE WILKINS FL 32152

What is a Division chief
suppose to do?
Why research HST?

CHIANGUNG COUNTY
TAIWAN

②
Lester
L6000, K...
----- Forwarded message -----

From: Paul Becker <paul.becker@noaa.gov>
Date: Thu, Feb 2, 2012 at 8:55 PM
Subject: NIST-PIFSC collaborations
To: Sam Pooley <sam.pooley.coop@noaa.gov>
Cc: Michael Seki <michael.seki@noaa.gov>

Hello Sam,

I would like to extend our appreciation for the efforts of George Balazs and the Marine Turtle Research Program staff at the PIFSC to develop a collaborative program with NIST for establishing a sea turtle biorepository and an associated analytical program to investigate contaminant exposure of these animals. As we began expanding some of our existing programs on marine mammals and seabirds into the U.S. Pacific Region, it was apparent that sea turtles are a top priority because of health and conservation concerns. George has been enthusiastic in working with us and we intend to provide additional analytical data and interpretation that we hope will support his program. Together with George's program, we collected samples from over 90 turtles in 2011 from live-captures, strandings, and longline fisheries. NIST is currently analyzing the samples for organic and inorganic contaminants and exploratory metabolite work is also ongoing that might provide some additional insight into response of these animals to diseases. The NIST lead for developing this sea turtle effort with George is Jennifer Keller, an organic analytical chemist who has done extensive work on contaminant exposure and health of loggerhead sea turtles. She and George are working very well together and will be co-authoring a presentation on this collaborative work at the 32nd International Sea Turtle Symposium this March. In addition, Jenn is preparing a NIST Internal Report describing the program, including objectives, rationale, and protocols.

We appear to be moving very rapidly in development of the biorepository and the analytical component that supports sea turtle research. This could not have been done without George's functioning field operations that are supported by the PIFSC's Marine Turtle Research Program. George has been extremely open, helpful, and excited about this collaboration. We are grateful for the efforts of him and his staff and look forward to the ongoing sampling and research efforts we have established together.

Best regards,
Paul

2/2010 NANCY LINSLEY 1402 GREENVILLE WAY
THE VILLAGE FL 32162

DEL MOSS 55831 29 Palms Hwy.
YUCCA VALLEY, CA 92284

His address is below, just to make sure
2-14-66-3 Nannko Chigasaki;;253-0061;;Japan
Dr. Itaru UCHIDA

KAJIKI
4-5, Oi-cho, NAKA-KU
NAGOYA 460-0015 JAPAN

何惠文
HO HUI-WEN
1057 SEC 1 CHUNG-SHEN RD.
TA CHIA TOWN CHUNG-YE
MIATUNG COUNTY
TAIWAN



JEFF CORWEN
ANATASIA

BOB
SIGALL

REARVIEW MIRROR

Pink hotel's storied history reaches back 85 years

The year 1927 was a historic one for Honolulu. Several important buildings opened that year, including the Hawaiian Electric building, Bank of Hawaii (at King and Bishop streets), the YWCA on Richards Street, the Academy of Arts and St. Francis Hospital in Nuuanu.

The grandest of them all was, and still is, the Royal Hawaiian. The Pink Palace of the Pacific opened 85 years ago this week with a dinner for 1,200.

The sumptuous black-tie affair cost \$10 per person and featured a re-enactment of Kamehameha the Great's arrival on the site in 1795 with 12,000 warriors.

Since 1927 the Royal Hawaiian has been a symbol of oceanfront luxury on Waikiki Beach and the favorite resort for royalty and sophisticated travelers alike. The famous pink facade, vaulted Spanish archways and gardens offer a unique ambience found only at the Royal.

An earlier Royal Hawaiian Hotel existed downtown, but I'll save that for a future column. When it closed in 1917, Matson bought the Royal Hawaiian name.

Capt. William Matson saw the possibility of building luxury ships to bring people to luxury hotels in Hawaii,

much like New Yorkers visited Europe.

Matson manager William Roth and Ed Tenney, who headed Castle & Cooke, secured 15 acres on the beach where King Kamehameha I and Queen Kaahumanu previously had a summer palace.

The New York architectural firm of Warren and Wetmore chose a Spanish-Moorish style that was popular in the 1920s, partially due to the popularity of Rudolph Valentino movies.

No other actor has spawned an architectural style, but the Arab-Deco craze spread to Hawaii where it also inspired Honolulu Hale, HECO, the Academy of Arts and the C. Brewer building.

A golf course was built in Kahala for hotel guests. It later became the Waialae Country Club. Greens fees were \$2.50 on weekends at opening.

President Franklin D. Roosevelt stayed at the Royal Hawaiian, and it was the first place to be dubbed the "Western White House."

Mary Pickford, Douglas Fairbanks, Clark Gable, Rockefellers, DuPonts and Fords came with their cars and servants for monthlong holidays.

The Shirley Temple drink was invented at the Mai Tai



STAR-ADVERTISER / 1958

This photo of the Royal Hawaiian was taken before the Sheraton Waikiki and many other hotels were built. Across Kalakaua Avenue from the Royal Hawaiian Hotel, the old Waikiki Theatre can be seen.

Bar in 1935 when the child star came for her first visit. Of course, it was pink.

Marilyn Monroe and Joe DiMaggio began their honeymoon there. Duke Kahanamoku met his wife, Nadine, at the Royal Hawaiian.

More recently the Brothers Cazimero headlined at the Monarch Room for more than a decade. But before World War II it was called the Persian Room. Harry Owens conducted the orchestra there from 1934 until 1941 and wrote the song "Sweet Leilani" for his

daughter.

Bill Sewell, who had been chief purser on Matson's White Ships in the 1950s, recalls that the Royal was a stunningly beautiful oasis in the middle of a gigantic garden.

"The times I stayed at the Royal," Sewell says, "one had the feeling of being in the middle of a well-kept jungle. The grounds stretched to Kalakaua Avenue and to Lewers Street. The low-rise, unobtrusive Outrigger Canoe Club was next door, and beyond it, the Moana."

During World War II the

Navy took over the Royal Hawaiian and used it for R&R. The hotel staff sealed the wine cellar with concrete, making it look like the wall of the underground tunnel it was part of.

After the war they returned to see whether the Navy had found it, and lo and behold, it was still hidden. For four years the Navy never discovered the secret

cache of fine wine.

By the mid-1950s more than half of all Hawaii tourists stayed in Matson's Moana, Royal Hawaiian, Surfriider and Princess Kaiulani hotels. In 1959 the hotels were sold to Sheraton for \$17.6 million. Sheraton sold the hotel to Kyo-ya in 1963 but still manages it. Today it is called the Sheraton Royal Hawaiian Hotel.

Bob Sigall, author of the "Companies We Keep" books, looks through his collection of old photos to tell stories each Friday of Hawaii people, places and companies. Email him at Sigall@yahoo.com.

JUNE 13-15, 2011

8TH U.S. CHINA MARINE RESOURCES

PANEL - JOINT COORDINATION MEETING (11)

NOAA HEADQUARTERS 8AM

LIVING MARINE RESOURCES

JUNE 14, 2011

SILVER SPRING FPR

TUESDAY

USA NED Cyr U.S. CHAIR

ANGIE SOMA - Head of FPR

"WORKING W/ STATES"

RE FORUM - WPRFMC state of Hawaii ESA Enhance Recovery Sec 10 Science Research

MMPA "sister Agency" FWS. "co-management w/ native Groups"

Listings sea turtle

Science needed to support conservation - down list

"Remove from list as recovered"

"ROAD TO RECOVERY"

EVAN - ~~Chinese~~ 64-92cm 3 patterns need EVAN TRANSLATION PAPER

"NATIONAL Government"

LIU QING presentation CFS

Rapid economic development - severe challenges

Re habitat - pressures

hydroelectric, hydroelectric rivers, pollution reclaiming land, agriculture, needed to reveal raw materials - conservation of sharks & Tuna.

Balancing econ. develop w/ environment protection

Social issues - poor regions - compensation offset Need to Balance.

Research platforms related to conservation

Learn from LMR 6-14-2011 (CONTINUED)
Information exchanges - experiences in
concentrate large species -

Humpback Whales. [Gt Hawaii]

HUANG HONGHUI ^{send even}
90%ⁱⁿ South China Sea ^{CHAW et al.}

3 nesting ^{85% CM} PENGHU, HK, HUI DONG, 1986 design
^{near} TAIWAN 1992 elevated to NATIONAL

1997 internationally only one in MAINLAND CHINA

1184 LANDED SINCE (20 years)

600 nests 70,000 eggs

60,000 young Artificial released 750,000

GANGHOU means "port"

tagged 7100

Rescue work 7700 saved

Let public participate in release

up to 2006

8 sat. tracking

speed 1-3 km/hr

GANGHOU I to OKINAWA - Recovered by fishermen Recovered device

Keel rises sea surface Salinity

Kuroshiro flow IN EAST SEA

14

HK SAR

Need
Spot 55
Huidong
Small for Small turtles

SSM = SILVER SPRING MARYLAND?

CONTINUED

LIVING MARINE RESOURCES (15)

Tracking

Ganghoy #7 sat. tag -

come back to nest twice,

DATA from Hong Kong.

Taiwan Strait

collaborations - demonstration or conservation started 2006 - wrapped up this year. protected in waters

We wish

- ① Artificial feeding of turtles Research (SLP, Hawaii)
- ② Disease control
- ③ More information on Migratory pathways - of young - enhance trackings - GIS - Balance Seaturtle manage & protect

④ Impact of climate change on Seaturtles. Multi country cooperations

need EMAIL HUANG HONGHUI Presentations

Bowhead Whales Protection of Marine Mammals

POLAR BEARS

delayed for presentation 20 MIN Break

NEXT STEP - Joint Programs -

NEXT LMR Letter 2012 IN CHINA

LOCATION TO BE DETERMINED

Need

PBS
History channel

CHINA
VIDEO

started 300 - worked up the

fact in water

We wish

Research (279)

- 1 Artificially... of turtles
- 2 Science...
- 3 More information on... turtles

of your - enhance... turtles

- 4 Impact of climate change on turtles

Research... turtles

Research... turtles

Next step - joint programs

determined to be lactation

Next time better 2012 in China

Concrete cooperative projects
collaborations

BROAD for SUSTAINED COOPERATION
LIST JUST for Aquaculture

- ① Integrated Multi-Aquaculture
- ② ecosystem models - re location of
- ③ ways to assess predict contaminants
POP PSP TO shellfish Aquaculture
- ④ collaborate with World Bank 2030 initiative
- ⑤ new Aquaculture Feeds
- ⑥ Fish health
- ⑦ hatchery technology genetics
- ⑧ Environmental estrogens & environmental impacts
? ENVIRONMENTAL SAFETY [A Group of Hormones]

LIST JUST FOR POP? CLIMATE IMPACTS ON Living Marine Resources

- ①
- ②
- ③ Understanding ecosystem of Fisheries

Large Scale climate change Pacific
Combined effects of acidification & ocean warming:
EAST CHINA Sea copepods & krill - changes
due to climate change

(18)

sup Jeff Paulski -

question filming animals for Disney opening.

AIR CHINA
South CHINA Air } DIRECT flights
TO Hawaii

Prof. Chen XUEZHONG East CHINA SEA Fisheries Research
SPEKE IN English - Adviser to LIU
or was it

DR. HUANG HONG HUI

" SINO-American " suggested by Dr. Pooley

DR. HUANG suggested:

Chinese Academy of Science's
SUPPORT

? NA Visiting Scientist = 1 year

Visiting Student = 1 MONTH (1-3 months)

SINO = dictionary.com

CONTINUED

MLR 6-13-2011 tuesday (19)

LIST Calcification (SP) ACIDIFICATION

RE: RUSTY BRAINARD
DOING RESEARCH ON CORAL REEF IN CHINESE WATERS

Science exchange
"Menu of options for collaboration"
Biodiversity & Carbonate chemistry

SEEMINGLY NOT CHINESE PRIORITY

CIST HARMFUL ALGAL BLOOMS

BROAD CATEGORIES TO "NEST"

OFFICIAL DESIRE COOPERATION
"SHARING EXPERIENCES"
Monitoring & Predictions & Prevention Red tides
AND TECHNIQUES (Hence information) Techniques TO Mitigate.

LIST HABITAT Monitoring & Restoration

ARTIFICIAL REEFS Miami visit by Chinese

Separate category "parking lot"
Near-term opportunities for dialog
training / Meetings

Final AREA
Thematic slide
sea turtles

specific proposal
conference A workshop
Section of Chinese white dolphin + Bowhead whale

Restoration of HABIT into sharing
develop collaborations
Accepted jointly
exchange into
ASSESSMENT TECHNIQUES
NRC booklet title

in 4 weeks of Collaborative Activities MLR (20)

BRIEF PROPOSALS WITHIN 3 MONTHS FOR SPECIFIC AREAS
Develop a jointly Agreed list of projects

- ① LEAD PIs
- ② Objectives
- ③ Proposed Activities + TIME LINE
- ④ Resources

* "Greenwrite workshop - different phases of development" Ms. Lui fast
PI = "Lead Scientist" VS. Point of Contact
Linking PIs together

" Hybrid Model
need cyp's
POC → MRC/HAN → USA
interaction affairs coordinator -
- one POC on each side -

8th U.S.-China Living Marine Resources Panel
Joint Coordination Meeting

June 13-15, 2011

NOAA Headquarters
1315 East West Highway
Silver Spring, MD 20910 USA

Meeting Objectives:

- Educate each other on the Chinese and U.S. government systems for supporting the management of living marine resources
- Identify joint priorities and specific areas for collaboration (short and longer-term activities)
- Define the scope and future of the LMR Panel and identify mechanisms and resources to sustain cooperation and joint activities over the next five years

Opening Session of the LMR Panel Meeting

10:00 - 10:20 Opening Remarks and Introduction of the Delegations
Dr. Ned Cyr, U.S. Chair
- Ms. Liu Qing, Chinese Chair

Version June 10, 2011

11:00 - 12:00 Overview of Chinese Fisheries/Living Marine Resource Management Agencies, Ms. Liu Qing, Chinese Chair

Aquaculture (including enhancement, mollusk culture and ecosystem assessment)

16:00 - 17:00 Integrated Multi-trophic aquaculture in Sanggou Bay, China. Mao Yuze, Yellow China Sea Fisheries Research Institute, CAFS

Ecosystem-based Culture Technologies in Sub Tropical Bays, Huang Honghui, South China Sea Fisheries Research Institute, CAFS

Effects and Assessment of Environmental Estrogens on Commercial Species of Fish Health and their Habitat in Mariculture Areas, Zhang Yusheng, Third Institute of Oceanography, State Oceanic Administration

Bowhead Whale and Indo-Pacific Humpback Dolphin Conservation,
Zhang Yusheng, Third Institute of Oceanography, SOA

14:40 - 15:00 Discussion

20 MIN

Discussion of Potential Activities and Scope for the Joint Program (short and long-term)

11:15 - 11:30 Remarks by the Chinese Chair

11:30 - 11:45 Remarks by the U.S. Chair and Sam Pooley, NOAA Fisheries, Acting Science Advisor

11:45 - 12:15 Discussion

12:15 - 13:45 Lunch (Local Restaurant)

13:45 - 14:00 Group Photo

Endangered Species

14:00 - 14:20 U.S. Conservation Programs for Marine Protected Species, Angela Somma, NOAA Fisheries

14:20 - 14:40 Conservation Strategies, Liu Qing, CAFS

Green Turtle Conservation, Huang Honghui, South China Sea Fisheries Research Institute, CAFS

Xisha
Pu

John
Meet

Email
Address

JAVAN JULY 4 - 17 2011
Mar. Fixed bayon...
11 Co. Subadults done by GB 7/12/11
24 juvenile Co. + 5 = 29
25 " Co. + 6 = 31
to kobe - met w/ Maki... & Yuki...

sent

George and Nanna Bradford
4161 Black Point Road
Honolulu, Hawaii 96816

6/22/2011
Wednesday

from ↑

Removed large DEAD turtle
nested 2007 at East, FBS

JUNE 28, 2011 - KALOHO TAGGING
w/ Kawa Jim + students + S
Sallie + Wendy Marks, Shandell Brunson and T.W.
(overnight "Pohala's Plantations" old house.)

JUNE 29, 2011 P
PUNALUU w/ UH Hilo MOP.
+ Rescue of FAT Hawksbill from Punaluu Pond. 308 lbs.

JAPAN JULY 4 - 17, 2011

Marc Rice & Kayan Arrived 7/8/2011

11 Cc subadults done by GB 7/6 & 7/7 & 7/8 (AM).

24 juvenile Cc + 5 = 29 (Choshi City) ROSE Release

25 " Cc + 6 = 31 (Sea of Japan Release)
(KANAZAWA)

TO Kobe met w/ Naoki KAMEZAKI & Yoshi MATSUDA

PSD Staff Meeting ^{wednesday} July 20, 2011

16% ^{Budget} Reduce of 2011 (proposed)

August 23 - TRAINING 930AM
ETHICS

~~Need~~ DATA Loggers - Will Seitz

Brenda - ^{saw} turtle tracks ^{va. coli}
David Boynton ^{others} photos ^{fell}
Send Brenda ^{Frank} kaula

"Cell Phone tops" - investigate

Leighton ^{cultural practitioners} Gu
Going w/ Charles
1st Aug Settle

~~need~~ Marie/charges - Hera Hon Titwines article

43 days at Gin camping

"out of Harris way"

Taiwan "Demand Deposit Account"

Cathay United Bank

International Bank of Taipei

* Things to TAKE TO HONG KONG / CHINA

NOT Taken still need

1. Moto tools

131 Bit

convert 220V no charge needed

2. SAT TAGS / supplies

50-50

3. Gifts - 0

MR. GU CHENAS cloth Regal candy WACADAMIA

4. Hk D

Taiwan AIR

5. Notebook

need

6. PIT TAGS / small reader

7. Red envelopes

8. Special pen

9. Sunglasses

10. kids gifts

11. Stone PURPLE CRYSTAL

12. handouts

13. EAR phones

14. Print picture Co

FEI YAN SON = SI-YUAN LAI

Frederick YEH p.142 JAN. 5, 6, 89

Rebecca (new) LAURA MANAGER

Expert of International Trade of Fisheries Bureau of Agriculture Ministr
SHOU College of Economics and Mangement
Research Center of Fisheries Development Strategy of China

Sun Chen Ph.D
Professor

Add: 999 Hucheng Huan Road,
Shanghai, P.R. China, 201306
E-mail: chensun@shou.edu.cn

Tel: 86-21-65710118
Mobile: 13371935636

Chialing Fong
231 New Taipei City, Xindian Dist.,
San-ming Road, 58, 4F
Taiwan (R.O.C.)

馮加伶

= Chialing

ADD ON "Hawaiian Sea Turtles" ~ 1986

CORE BIOLOGY Add-on ERMARK PRIOR

Conduct "Conductor" of research Core Program
Research "Conductor" Conduit for research

INNOVATE " Please Ask Questions
Facilitate People Make Partnerships"
Synergize

DANISE TYLER Wendy JIMAR After Hours - 6 6(+1)=7
SHAWN SHANDELL ME NOAA (NOAA VACANT)

- 1995 - Research Experience ⁸⁰ International ⁷⁵ USA
- >1990 - Rescue Rehabilitation & Ocean Return = 719
- 2005-2011 - Educ^o Outreach > 80 visits
- 1982-2011 - EU ~ 640 (30-50 years) 90% FP

* need a few Recovery Plans

"SPRING BOARD" for BIOTURTLES ^{UTEP} → Graduate School

- LIST Graduate Students - Theses → ACADEMICS
- 9 MASTERS + 2 nearing completion
 - 6 PhD + 1 Nearing Completion

N. SHORE TAKE BARBLESS

RESOURCES

- Field support VIA (OCEAN CAPTURE)
- Finance support
- Academic support

Todd De J
John Davenport

1982-2010 5,627 cases
1/3 alive 2/3 dead

Intro BY SAM

GB

YOUNG BOGGS

MIKE

MIKE

FRO

26 July 2011 DAY 1

900AM START (31)

Molly
NANCY
Selena
BRIAN

EXTERNAL Program Review Sea turtle and Bycatch Research

Intro. "Are we doing the right things right?"
BY SAM S. Pooley

MIKE Sasaki overview

→ 2003 RIR created

Federal (NON-Fed)
107 JIMAR
150

257 staff
GB, DP, ^{enise}SKM, ^{handell}SB, ^{enise}WM, ^{y/en}TB, ^{hawn}SH (HOLLINGS)
1 2 3 4 5 6 7

YONAT Boggs - "Fisheries Research & Monitoring Division" 4 Fed (3+1 RAN)
3 NON
7 (currently 6)
MTRP

MIKE "CORE" PIFSC
"Hawaiian Seaturtle 5-yr Budget History"

"By-catch engineering"

MIKE Priorities List FY12 for Center

except By-catch no priorities for turtles until finding out budget status / EAR MARK LOSS.

"Your question is a good one" timely
Frank - overview S.T.R.P.

TURTLE PROGRAM REVIEW ^{continued}
Frank

7/26/2011
Tuesday

SOCIO-ECONOMICS

P.D.O. = Pacific Decadal Oscillation
Sam - "we're not looking for budget advice"
" "

Molly = "Agency - not Agency"
Socio-economic Fisheries
(cultural not mental though)

FRANK overview

"Studying them to death" DID NOT ^{take} ^{care} etc

CHRIS BOGA -
fish Bio Catch (and don't catch organization)
"You've got this money for an awful long
time now, aren't you Dave?"

EOD Jeff Lobina - no PP

Rusty Reef - Kevin -
coral

PLS
papers

Kyle FIRST
MODULE

July 27, 2011

(35)

TORNADO VIRUS
TORNADO VIRUS FLORIDA Wednesday

Arg. promotes Viral tumors + herpes

Sand Is. - Celia Smith

- 4 - ~~NON~~ NATIVE
- 4 - INVASIVE

INATURALIST.ORG

supported by
significant amount of
~~empirical~~ empirical
DATA

"Hawaii Sea Turtle Monitoring"
(cell phone)
(SMART phone) not public yet

"NEXT MODULE

Historical biogeography of sea turtles
in the Pacific Ocean"

need - old time fishers get-together
KITTY

7-27-2011

8-19-2011
Friday

out reach / research submit

wrap up pedagogy ^{for} hardware

Faculty / graduate more

NOAA
institutional

collaborations "out House" in house

- Permits

Assessment Model / framework

Schwa
actual knowledge as what
assessment models need to do,

7-27-2011

(39)

EOD Jeff Polovina presentation.

Jeffrey C. Mangun
Peter H. Dutton
Add Evan Howard to PhD List
DIVERSE CHAPTER OF THESIS.

Done - Already in Chinese.
TRANSLATE INTO JAPANESE.

ABSTRACT The post-capture movements made by loggerhead sea turtles *Caretta caretta* in the southwestern Pacific Ocean were monitored from 2003 to 2007. Fourteen loggerhead turtles were fitted with satellite transmitters and released off the coast of Peru. All turtles were juveniles (total carapace length range: 40.5 to 63.5 cm) incidentally captured by small-scale longline fishing vessels from southern or central Peru. Track durations were highly variable (mean = 237 (sd) = 90 d, maximum = 697 d) with no clear signs of immediate post-release mortality. Upon release, all turtles moved offshore beyond the continental shelf. Eight of 14 turtles tracked for >100 d had final displacements of <750 km, suggesting that loggerhead turtles often maintain extended residency in these waters and that this area is an important foraging zone for loggerhead turtles of southwest Pacific origin. Satellite tracks also showed a substantial overlap of areas used by turtles with known Peruvian longline fishing effort. Turtles spent 75% of their time within the area fished by this fleet (based upon observed sets). This suggests that turtles are vulnerable to fishery-associated and that spatially explicit measures should be employed to minimize fishery impacts on loggerhead turtles. The loggerhead tracked during this study spent on average 51% of their time in Peruvian waters, 20% in international waters and 29% in Chilean waters, which emphasizes the need for a multinational approach to sea turtle conservation and fisheries management in the region.

PE

SEAPDM

HABITAT
INDEX

VS ACTUAL
TRACKS

N & S habitat gradients
haven't been able to do east/west gradients

(40)

Post-capture movements of loggerhead turtles in the southeastern Pacific Ocean assessed by satellite tracking

Jeffrey C. Mangel^{1,2,*}, Joanna Alfaro-Shigueto^{1,2}, Matthew J. Witt²,
Peter H. Dutton³, Jeffrey A. Seminoff³, Brendan J. Godley²

¹Pro Delphinus, Octavio Bernal 572-5, Lima 11, Peru

²Center for Ecology and Conservation, University of Exeter, Penryn, Cornwall TR10 9EZ, UK

³Protected Resources Division, Southwest Fisheries Science Center, National Marine Fisheries Service,
NOAA, La Jolla, California 92037, USA

ABSTRACT: The post-capture movements made by loggerhead sea turtles *Caretta caretta* in the southeastern Pacific Ocean were monitored from 2003 to 2007. Fourteen loggerhead turtles were fitted with satellite transmitters and released off the coast of Peru. All turtles were juveniles (curved carapace length range: 40.5 to 68.5 cm) incidentally captured by small-scale longline fishing vessels from southern or central Peru. Track durations were highly variable (mean \pm SD: 143 \pm 90 d; range: 8 to 297 d) with no clear signs of immediate post-release mortality. Upon release, all turtles moved offshore beyond the continental shelf. Eight of 11 turtles tracked for >60 d had final displacements of <750 km, suggesting that loggerhead turtles often maintain extended residency in these waters and that this area is an important foraging zone for loggerhead turtles of southwest Pacific origin. Satellite tracks also showed a substantial overlap of areas used by turtles with known Peruvian longline fishing effort. Turtles spent 75% of their time within the area fished by this fleet (based upon observed sets). This suggests that turtles are vulnerable to fishery interactions and that bycatch mitigation measures should be employed to minimize fishery impacts on loggerhead turtles. The loggerhead turtles tracked during this study spent ca. 51% of their time in Peruvian waters, 39% in international waters and 9% in Chilean waters, which emphasizes the need for a multinational approach to sea turtle conservation and fisheries management in the region.

Hilo CRACK SHELL REPAIR - 4 MILE

~~SPOTS~~

Jerry
SLP
cell 341-3020

LT # ARR = 722

4851206E24

4851206E24

722

SCL = 89.4
Released

8/3/11

Left

201.9
lbs

SCL = 89.4

Right

4/4 4 SPOTS
ID

KAWAIKI 7/9/19
oahu

4839582676



4839582676

SPOT 5 AGOS ID 71719

Meeting
 M. Asi
 Polynesian Shores Condo
 Green Turtle Nesting (NOT)
 Danielle Hanoue
 7353 Bayoak way
 (530) 774-3027 Citrus Heights 95621
 6th / 10 pm last night. / 2 weeks from Calif

Molokai
 Waiawa July 3 "nest"
 + July 18 Tel 558-8421
 Set Barbara Nickou
 Box 1894
 KIK HI 96748

Abundance, Distribution and Habitat Quality of the Hawaiian Monk
 Seal Turtle (*Chelonia mydas*) at Resting and Feeding Sites along Maui's
 South Coast

Daniel Maldini¹, Robert W. Rankin², Nicola Karczaghi²

¹Pacific Whale Foundation, 300 Moalaea Road, Suite 211, Waiolu, Hawaii
²Università degli Studi di Milano, Via Festa del Perdono 7, 20122 Milano, Italy

8-23-2011
TUESDAY

9AM - 1030AM
ETHICS TRAINING

~~Differentiate~~

Interviewed as a professional
or as a NOAA position ("representing NOAA")

SES = Senior Exec Service



Meeting
w/PWF

Seal Sighting
four

Seal
eats
algae

(45)

NICOLÒ ROCCATAGLIATA

mikrok86@hotmail.it

~~Seal~~

pdf,
Webnitz et al

cc Bennett

Maui 24-25, 2011

NAME =

Wed. Thurs. 31+5=36
MDC Release of 5 SLP captives

Dr. DANIELA MALDINI Research DIRECTOR

Meeting

Daniela Maldini, Ph.D.
Chief Scientist
Pacific Whale Foundation
300 Ma'alaea Rd., Suite 211
Wailuku, HI 96793
Phone: 808-856-8338
Cell: 808-264-2540
Fax: 808-243-9021
Email: dmaldini@pacificwhale.org

need
Jean et al
2011

**Abundance, Distribution and Habitat Quality of the Hawaiian Green
Sea Turtle (*Chelonia mydas*) at Resting and Feeding Sites along Maui's
South Coast**

Daniela Maldini¹, Robert W. Rankin¹, Nicolò Roccatagliata^{1,2}

¹Pacific Whale Foundation, 300 Maalaea Road, Suite 211, Wailuku HI 96793

²Università degli Studi di Milano, Via Festa del Perdono 7, 20122 Milano, Italy

8/31 2-year Loggerheads N.P.
760k estimate to Alexis et al

ANNUAL

EOB Jeff

30k TAGS

100k 3 staff parttime

130

130

240

380

370?

MTRP

10k TW Bycatch

100k TAGS

50k Argos

10k Travel

65k Demise

30k GB

265k

(I wrote 240)

Sept 1, 2011

~~XXXXXXXXXXXXXXXXXXXX~~ (47)

100-230PM 360 requested

Profession Development by G.B

Direct Report DR

3
3 - Peer → P

1 Boss Superior Supervisor
DIRECTOR'S OFFICE

→ coworkers = C STACY

List

(5)	DR = 5	HT
(10)	P =	HT (HT HT)
(2)	S/O/A = 2	HT HT
(6)	C =	HT HT 1

STACY = HT
23

29A.2.10.11
11/11/11

9-14-2011

Received by key
~ Oct. 14, 2011

~ 3 MONTHS OLD
IN Aug 2011

Sent FEIYAN ZHANG
GANGKOU SEA TURTLE NATURE Reserve
HUIDONG, GUANGDONG, CHINA
526359

Mailed from Yucca Valley - 2 cans of
powdered baby formula + food + baby toys,

BABY'S NAME =

11-16 September 2011
YUCCA VALLEY

House to west -
Irene's daughter - Pauline
1504 Reggis Ave
IRVINE, CA 92614
Tel. (949) 651-9962

Mike
Seki
Presentation
CAPS

9-19-2011 Monday Conference
coll w/ Karen Bjornal & Stacy Haggare

9:10 A.M. →

- Annual STRANDINGS - Tag recoveries?
- Stacy prepare examples of data sets of our database,
- Carry over effort
- MDC - quality of data - need.
- Bring MFLANI
- Revisit Growth rate places
- include other sites for "intake work"

- Fossil - Selma student
- ~~need~~ obtained
- Carr & Goodman
- "Ecologic implications"
- Growth after maturation

50

Wednesday 9/21/2011

PSI Staff Meeting
9:30 AM

need send Kyle/Todd Stacy's Pref.

APU?

Thesis of Mark Contaminant

Eleanor protocol?

★ STILL need

10/9/50

need Jesse Lopez

~~Jesse Lopez~~

NIST

Eleanor

~~Need Entangled in Packing STRAP~~

~~Mark seal ELAPO~~

~~TRACY WORTH~~

FY 2011
Performance Review 9/21/2011
11 AM - 12:15 PM

Meta

w/ ~~XXXXXXXXXX~~

Milestone -
Draft plan initiation = network
collecting inventory of peripherals
initiation of a robust workshop
collaborate then meet

TAIWAN & HONG KONG

28 SEPT. - 15 OCTOBER 2011

wed.

CHINA AIRLINES INVITATIONAL HNL-TPE-HK-TPE-NARITA-HK (A/L)

9/28 - 10/8/2011 (10/4 - 10/8 Kenting & Liu Qui ISLAND)

10/5 - Presentations

10/6 - Health ASSESSMENT & Necropsies

10/9 SC and 10/4 - 10/4 (6 nights) BRIDAL TEA HOTEL 10/14 - 10/15 (1 night)

10/10 Met PAUL Lam / Margaret Murphy

10/10 Met Assistant Director MR. LAY

10/10 Met Wet LANDS Park (Little green)

10/10 Met Ocean Park (green & Simon) (with thanks bill) DAVID

10/14 Friday Met 1.5 hours conferred w/ Simon

★ ★
Need download of LMR turtle presentations.
need Alexis Gutierrez my Trip.

endy = 2 turtles
Moribilly virus - for seal
Alaska <-> Hawaii

JOHN & JULIA
Davenport

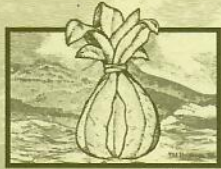
Executive Assessment & Development

Jeffrey C. Crawford, Ph.D.
Consulting Psychologist

2269 Okoa Street
Honolulu, Hawaii 96821
808 373 1172
ExecDevelopment@Hawaii.rr.com

EDDIE KAMAE

THE HAWAIIAN LEGACY FOUNDATION



Ho'okupu Project

P.O. Box 8230
Honolulu, Hawai'i 96830-0230

Tel: (808) 951-7316
Fax: (808) 949-7718

Website: hawaiianlegacy.com
Email: hawnlegacy@lava.net

Eddie Kamae, Director
Myrna Kamae, Producer
Executive Director

* 9/3
Print
Recommend
email
for the book
steril
Filter
steril
OCT
TRAVEL
FY 2012
CHAD

Wednesday
19 OCTOBER 2011
9:30 AM

PSD STAFF (53)
Meeting

Print
Recommendations
email
for the book

PSD staff is Administrative "Semi-Hyper"

"As far from Science & Research as one
could ever imagine."

sterile
Filter
Sterile

TRAVEL 2nd
FY 2012

3rd APRIL
4th JULY
5th AUG
6th SEPT
7th OCT
8th NOV
9th DEC
10th JAN
11th FEB
12th MARCH
13th APRIL
14th MAY
15th JUNE
16th JULY
17th AUG
18th SEPT
19th OCT
20th NOV
21st DEC

CHAD BE - Biological Evaluation

East Is. field camp
MONK SEALS

Wendy = 2 turtles vs samples (big issues)
etc.

Tyler =
ERROR check w/ devon oversight

"Moribilly virus" - for seals, to
Hawaii? Humpback whales migrating
Alaska <-> Hawaii.

(54)

~~Attended~~

Friday see page

I haven't
Suek
①
Frank

+ Thursday 11-10-2011 3pm - 5:15pm
② Crawford
Feedback
④ Final

- Some strategies -

- When getting staff each morning tell them how I am - what state of mind - "Feel Great" etc
- one on one - Do I praise your good work sufficiently? often enough, are good words, and good as email
- Short emails to me
- Socks into 109
effect to speak softly
- Ask for feedback, if uncomfortable
- Up lift colleague at Center whenever appropriate. Since I'm so big/huge
- DON'T comment on presentations unless all positive - don't correct except in private

dye my hair so not "Silverback"?

Meeting

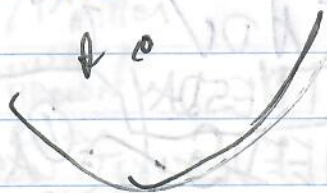
3 pm 31st October 2011
After lunch ?

~~PP~~

NOVEMBER 10, 2011 3pm Thursday

Field work = turtle
safety & personnel
Community & public perception/Hawaiian

PIRO - not salvagable



10 AM Conference Call

KEITH CHANON

Academy of Sciences

10/24/2011
Monday

conference call
South China Seas Research
Institute

Frene Kelly, P. opay, Alexis
Keith, Tomo Eguichi,
Jeff Semnow, Evan Howell, Stacy
HARGROVE,
Shanghai UNIV.

next week

TIME? → NOV 1st Reception Hotel
TUESDAY Workiki, Resort

NEEDS = ① ASSEMBLE selected literature list Chinese
NG Schipa Sea

send TO STEERING Committee: CI Report + Simon Parker
+ Don Jeff Semnow Dawson
- presentations TOPICS - SeaLife Park Hawaii et al. STRABLING NEWS

PROPOSED PROJECTS / COLLABORATIONS

DIG FOR BONES IN SAND AT RESERVE
- spend weekend

DON'T CIRCULATE
WORD

- ① Host up to 4 scientists - Research Exposition of HKU Program for 2 weeks; 1 scholar Researcher for 3 months
- ② S. CHINA SEA - Coop SAT TRACKING Hard Shelled YAMIN WAN
- ③ Gangkou 3 MONTHS (or longer) SHORTER or

IF PERG HU, Then CHINA AIRLINES TO HK w/ TAIPEI STOPover.
IF HK ONLY THEN CONTINENTAL DIRECT VIA GUAM.

Federated

STRAND
N=5

how
M20

10/24/11

MONDAY

to Kimberly Herrin
SPOT 5

ID - 19597 4/44
TARONGA ZOO

+ Supplies

Federated # 8721-6657-0074

Wildlife Comp 1051214

Federated

57
The one brought
Back 2011 PNPA
from HAWAII
JAPAN.

AWARD PLAQUES GIVEN

STRAND

UH MOP - 20 years

Kuwabara
CINDY Hunter

N=5 HITWMS - 10 years

PATTY Miller

MC UH - 10 years

Donna BROWN

UH Hilo - 10 years

John Coney
JASON Turner

SLP H - 3 years

Jerry/Seft

N=1

Punaluu UHMOP
3 years
JASON JOHN

PLAQUES

Needs smaller?
Pay for some myself
WORDING needed

- HAWAIIAN Bay

Hawai

DON HEACOCK

MZUI

SKIPPY HALL / GYNNIS

HWF

Will Seitz - Hawaii Island H.R.P.

MALAMA NA HOU (or Joanne Pettyrew only)

ALAN KAM

FWS FFS

LA PEROUSE

IACUC 101 ^{10/24} HNL 10 PM VIA DALLAS/FTW ARRIVE MON 10/25

(59)

ALBUQUERQUE NW
10/26 DAY 1 8 AM
Wednesday - Monte Matthews UNIV. OREGON
TOUGH VIA GLASS DOLPHIN - Kewalo Lab's facility.
LABORATORY ANIMAL CARE
ARRIVE HNL 4 PM
SAT. DEPART 9:20 AM 10/29
Michael & Ed to Adam's CISTINE Chapel

NIH office - OLAW enforcement.

1876 British - Cruelty to Animals Act - Registration,

Eugenics = "Good Birth"

Nuremberg Code - Human Consent, Experiment designed on animal experimentation (if it makes sense).

1887 Hygenics lab set up NIH predecessor.

"AZAP Program Description" "AZAP site visit"

USDA ANNOUNCED INSPECTIONS AZAP Accredited, new GUIDE - Chapter 3 new Aquatics

The Three Rs
Replacement Refinement Reduction

1970 Animal Welfare Act
PAIN Cot C, DE

1985 - AWA Amendments established IACUC

need web site - PIFSC

Assurances on web site.

(6)

SWFSC web Site =

AAA-LAC Approval

- NAM = Community Member
- US Gov. Principles
- "give Benefit of doubt to animal" - Re discomfort & Pain. Moral & legal obligations.
- MS222 - aquatic Anesthetic
- Publics involvement

- Feb 4
- 1962 Silent Spring
 - 1966 Life Magazine - "Your dog is in CRUEL Danger"
 - 1969 Greenpeace Founded
 - 1975 Animal Liberation Peter Singer
 - 1981 "Silver Spring Monkeys"
 - 1983 - UNIV. Penn, U-head injury studies. Baboons

Illegal Actions - Rise - 1981 to Present

"Illegal Break IN'S
 Animal Lib. Front UNIV. Oregon
 Researchers/staff
 Homes +
 Graduate students doing
 Animals."

Dollar figure of loss? - you can't

"Minimization of pain discomfort etc."
 * SELF-REGULATIONS *

"MAINTAIN Trust
 PUBLICS use of knowledge
 not A right"

Wednesday DAY 1
10/26 / 2011 GO 200
SPAN 1

(63)

MARKY PITT - "Key Components"

"NSA" Principles for the ethical care & use of Animals

Will it help people of animals.
Pain & distress

"follow protocol that was approved"

Attending Veterinarian
Authority to intervene - pain/distress

The IACUC - "The Safety Stewards"
Safety of animals and people

oversight of whole program

Members - affiliated & non-scientific

* Recognition of Members *

pace car DRIVER

"The Institutional official" - The Race car
? Wende Sam Mike (I.O.)

Responsibility - Person that legally commits

SIGNS IACUC Assurance - Senior Admin

Who signs ours?

legal person responsible

DAY I 10/26/11 WEDNESDAY
~1015am

(65)

Jerry Collins PAST chair
Yale ANESTHESIOLOGY
IACUC FUNCTIONS

What & why doing wildlife studies.

"Culture of Compliance"
"So interest in science might forget about animals"

"General Society" Media image of a scientist.
KNOW "Why I do it!"

IACUC - A fire wall. Ensures self-reg. IACUC
asking on behalf of institution.

Imposing on folks more than needed? look
at questions asked.

"Semi-Annual evaluation" - 5 yr? "Ask"?

IACUC can request modifications, legitimate.

AIS MOST important
#9 - "Confirming reviews of each previously approved"
Post-approval monitoring. USDA animal reviews.

Provision of adequate vet care.

Responsible for catteries and people working with them.

Get comfortable asking questions.

#1 Program Review

#2 Facility Inspections who conducts?

Confidentiality "Conflict of Interest" "Whistle Blower" →

GENERAL COUNSEL
Aware involved?

Wende Goo
Bill Pottee
Shandell

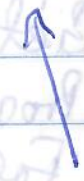
OUR IACUC

Occupational - History of Injuries - Tell persons what risks are and provide training.

Requirements & Expectation

Species they are using

Handwritten notes on the left margin, including the word "Species".



26 OCTOBER 2011 Wednesday

(67)

DAY 1

An IACUC suspension of an animal ^{activity protocol} committee can not be overturned by any institutional authority.

Replace animals with non-animal models.

← 3 birds
"what you first is not Always what there is"

11AM Michigan state
MOLLY GREEN - "Qualifications, TRAINING & Animal Health"
MMFS don't cover fish. Why not?

5 FREEDOMS

- 1 hunger
- 2 discomfort
- 3 pain injury disease
- 4 fear & distress
- 5 Express most normal behaviors

[unrelated to project]

AALAS Learning Laboratory.

How do you Access ^{STAFF} people ARE PROPERLY TRAINED? ^{RETRAINED?}

IACUC Compliance — move to ALSO ADVOCACY and EDUCATION

ARE SOPs ^{protocols} being followed?

"Scientist consider themselves as 'Victims' - But they are point of program."

DISASTERS - TRAIN How TO MANAGE Disaster.
Need A PLAN

Ask if they want more training.

(68) "IACUG 101" Next one MARCH 2012 IN BOSTON

PHS = "Public Health Service"

AAALAC =

OLAW =

USDA

DMR

VS

FCR = Full Committee Review

IRB =

ENRICHMENT = promote Psychological well being

IO

"NUREMBERG CODE"

DA
260
Web
Response
card

NE
A
C
NATI
Av
"A
S
Module
BOPM
ETH

DAY 1 10 AM NW Time =
12 midnight 10/27/11 27.999
26 OCT. 2011 Lunch 1200-1230pm

Wednesday 1230pm - Questions & Answers
Response Card TURNING POINT digital. www.turningtechnologies.com

Website - Results of inspections (up to institution)
Transparency - protocol forms - etc.
Assurance form? no home addresses
Next Module "Semi Annual Evaluations" SIRI
Dr. ^{in CYPRUS} Gillett DVM (required) if using USDA
Animals, "Semiannually = Twice a year"

Whistleblower posted form.
Enrichment - hiding spots, etc.
Recap needles? Invite Safety Officer

NATIVE AMERICANS
CULTURAL POINTS OF VIEW
and CONCERNS

IACUS - GATE keepers
IACUC - DISSECT protocols
in applications

"Accredited"

Set up meeting w/ IO, update on status of program.
Module - Basic elements of Protocol Review

130pm

Dr. Ernest Prentice

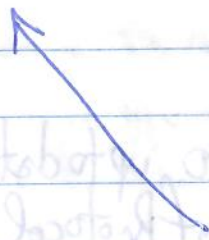
ETHICS - understand & appreciate human research,
Biomedical vs Wildlife Research
Research

"Responsible advancement of Science & Medicine dependent on
Animal, Men human use."

TRAYLOR
MIDE
1962
FDA
WORKS
UP

Research PI -
Are "Creative"

Cost-benefit
Ethical cost Relationship Relationship Acceptance
Scientific value vs Ethical cost



Having effective Occ

DAY 1

DOGS

HK

8AM

(7)

Informed consent form

retroactive of ownership

27 =

6PM = 26th NM

10/26/2011 - PAIN, DISCOMFORT & DISTRESS

Tuesday - NO UNIVERSAL oversight in research

Research - Can't involuntarily withdraw

Animals more highly regulated than human research (but wildlife research??)

PHS = "Complete Review every 3 years"

USDA - Annually

Increasingly more

Fish → Pig → Dog → Chimp higher order (higher moral status)

BABOON Liver into Human 1993 Pittsburgh -

Session II

"When using animals, they become our surrogates" because their MORAL STATUS is elevated.

PHS policy: Must be met for research to be VALID/APPROVED. Is there unnecessary duplication? NOT UNNECESSARILY duplicative

What is the potential relevance of research?

Increasing use of 3 Rs

MUST Reduce ETHICAL COSTS.

Replacement Reduce Refinement

Treatment of PAIN/DISCOMFORT

Magnitude/duration

need: STATE OF ART

Post-procedure Monitoring

Euthanasia - What is RATIONALE? FOR METHOD CHOSEN?

loss of consciousness and death

(14)

PHS funded -
All Vertebrates

Wed.

Thurs.

27-28 October 2011

"A WALK ON THE WILDSIDE"

A conference on IACUC oversight of
wildlife research. IACUC 101 Training and*
Workshop on Animal Welfare Act Compliance
for Studies of Wildlife in the Field and in
Captivity

BR
Records

DAY 2

81
27
THU

WB
② W

Break ~ 3pm

DAY I 26 OCT. 2011

Recap: Mock IACUC Answering assigned questions.
Alternate now affiliated - Quorum etc NOAA applicable?
2 full-time Rest.

"Collective Wisdom" of group.
change of anesthesia - even for better - must
be reported to IACUC.

QUESTIONS: END Session Day 1

DISPLAY ANIMALS
Siri - Alternants? ZEBRA

ORIGON STATE covers IACUC fish embryo
Materially altering behavior of animal (determined
by how it behaves after to return to wild),
"bleed a bird" - survival 30%
END 4:30 PM

8:15 am Ellen PAUL INTRO Budget 9090 NEH
27 Oct. 2011 need & desire to study NSF 7 Billion
USGS 1.1 "

THURSDAY Wildlife Biology in natural environment
vs Biomedical Research.

Chocolate & cheese. WB about species

- 1) welfare of animal
 - 2) impact not modifying behavior
 - 3) concerned public response - (flippers) Regulatory Agencies
- WB not a job

② WILLIAM GAWSON - wildlife research - funny photos
of real field work.

27 OCT. 2011

(3) Robert Sikes - IACUC "IACUC GUIDE" system designed - 7 versions

(wildlife specific) of book - 4 paragraphs 220 pages
by 14 Authors

665 references - 0 of those for wildlife research.

capture = 0 "TAXON SOCIETY"

need ★ Guidelines - Amphibians & Reptiles
1987 Publications - developed at request of NSF. Also ones for mammals, and birds.

35 Authors "Wildlife Care & Handling"

need Revise PHS Policy to recognize documents.

(4) Jeanne FAIR -

(5) Robert Sikes - field study "Any study conducted on free-living wild (9 CFR 1.1) animals in the nat. habitat that does not materially alter behavior."

• USDA under ANA is exempt

But not PHS.

F.S. no definitive definition of "field study"

Manipulative vs Observational

Bird Banding 1.0 - 1.5% injury/mortality.

(6) Ellen Paul Again

Impact at population level.

"Place permits"

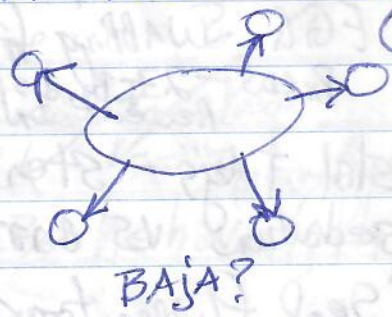
ESA Birds - permit needed for counting & observational

(7) David Druffy - "Populations and Protocols - What matters?"

Siri Safety Acceptance Health

"Populations are what matter in Biology."
"Is there mortality or just behavioral responses?"
If you look hard enough you'll find something.

"SINK POPULATIONS"



Production → HACE GYNX

BAJA?

BIRDS + Collect - Specimens available for decades to hundreds of years.
Alaska - HARASSMENT PERMIT?

Siri? "Autonomous underwater Gliders" - disturb?

Siri Which comes first permit or IACUC Assurance?

DR. JOTHU - Bird Banding Lab - Agency?

- BREAK - Reconnect 11 AM - Panel w/ Doug Demaster

Siri HALAKA DAN MULCAHY + 4 others,

(Capture methods - Physical Restraint collection)

Field surgery and other invasive procedures, Siri - Turtles jump on them (grasp w/hands)

DAN - 19,000 telemetry papers

Siri - Sop's - establish a "clearing House" for them. STANDARDIZED

ISTS + IACUC Submission forms Standardized

Question Who? Training? Experience? How biologists view Vets, Vets (no Wildlife). STEREOTYPED "IACUC HUNTERS"

10-27-2011 Thursday

DAN - Sterilized penetrates skin (anything) -
not just disinfected,

EGG SWABBING for DNA, Fecal for stress hormones,
BIRDS - 27 Bird species
Recent DNA paper,

Metal Tags - sterilize
sedation VS anesthesia

* DAN's paper in press

Seal Flipper tags - poked hole -
anesthetic, DAN He lost?

CHEMICAL INTERVENTION!!

NATIONAL Agriculture Library, Literature Searches

DAN - post op PAIN?

Clareoil for Fish - illegal,

Alter vs (materially) Alter USDA - field study
versus "Reportable"

one person said "Any" handling is material.

PITA - Headquarters Norfolk, Virginia
Rehabed animals used for education or dialog for PITA

How do deal with Confrontation in the field. ^{hostile} media TRAINING
USDA APHIS FIRST concern - EXTRACT FROM situation!

LOCAL Antygen
Vaccin
Benzodiazepine

Flipper Tag Application
Lidocaine
Leads
Blood etc.

JOLINE
JOANNA

OCT 27,
2011

excludes
PARTS & MICE
warm blood
except
(77)

LUNCH TALK ~ USDA APHIS AWA,
House Protection, PET (KATRINA fema) MULCATHY
108 inspectors

IACUC Reviews -

FARM Bill 2002, 2004 7400 comments on Regs.

* After Lunch → DAN TALK ← "Injury & MORTALITY"
- Post-Release Alteration in Behavior, Ph
- Transgenerational effects
- Occupational health

"We can do the worst harm with the Best intentions"
IACUC Represents
ANIMAL & Public

NEXT TALK - AIR FORCE ACADEMY - DR. HALL
Allow for Creativity - Think outside box • HALE?

EAT DINNER at Surgery - DAN

Siri - "Please give me some indication that you've thought
about numbers". They

Consistency - should BAT vs Bird wings Flipper
DAN Propol used for local, but will be deemed "Controlled" Marine Flipper

ISOflurane - needs oxygen (difficult to ship) Substance"
DAN stopped using 2000. But - Now there are Oxygen Generators.

Cool them Down (Heaps) - for Surgery? Anesthesia
(not for cold adapted species)

(Frogs - Pit tags - go to bladder and eliminate out.)
"TRAP MONITORS" - Radio frequency ALERT.