

3 of 3

4/10/2017 7:59 AM, George Balazs - 1

For turtles 'simply' stop killing them (especially for Commerce) and 'sit back' and wait 40 years.

+1 808 683 8402

**MUROTO CAPE**  
**COMPOSITION BOOK**  
 STAT 27 <sup>TH JPN</sup> 7-13 DEC. 16  
 XIAMEN-TAIWAN 6-11 JUN 17  
 TAIWAN PENGHU 8-15 FEB 17  
 PUNA LUI 17 FEB 17; 25 FEB Hilo  
 BALAZS, GEORGE  
 17-20 MARCH 17 HK-CHINA  
 TOP FLIGHT

Wide Rule  
 100 Sheets • 200 pages  
 9.75 in x 7.5 in (24.7 cm x 19.0 cm)



汕头大学学术交流服务中心  
SHANTOU UNIVERSITY ACADEMIC CONFERENCE CENTRE



1 Doraemon  
 1 Peking Man  
 LE CREUSET  
 1  
 TAIWAN  
 KAH  
 KEE



Good  
response

George Balazs

A

## A Stormy Night

The rain beat furiously on the street that night. Large streams of water rushed along in the gutter. The stars and moon were completely hidden from view by the enormous black clouds.

It was midnight. The clock on the street corner chimed the hour. The last stroke echoed hollowly through the rain.

He walked through the darkness. His coat was soaking wet and his face showed the strain from working late at the office. As he walked, part countless houses and buildings. All seemed dead except the never ceasing rain. The door of



a near-by garage flew open. At first he jumped back then resumed walking when he realized it had only been the wind.

Suddenly strange hands reached out from the dark. Two figures pulled him into an ally! He struggled but they held him in a grip of steel. They pushed him through a door, it slammed behind him. He was in a dimly lit hall.

Heavy drapes cut off his view of the adjoining room. His voice was thin with anger as he spoke. "Listen, I don't know what this is all about, but you've got the wrong man." One of the two figures glared at him and said "No, you are an earthling, we have the right man." "I don't



George Balogh

understand," he said. Without saying another word the two figures started pushing him toward the curtained doorway. For the first time he noticed a telephone on a small table. As if haunting him it started ringing. One of the figures let go of him and answered it. "Yes. We've got him."

What? Yes, all right? Putting the telephone back like it was the figure walked ~~back~~ over to him. It spoke again. "Instructions are that he be told everything. Sister well, earthman, we are not of earth. We are aliens from a parallel dimension who have taken human form. We are



170

sending you to our dimension so our scientists  
can observe you and learn all about humans.

Beyond these drapes is a room of nothingness,  
the entrance to our dimension. <sup>4</sup> They pushed  
him through the soft drapes. He screamed but  
it did no good. He felt himself whirl and plunge  
downward into blackness.

When his thoughts cleared he found  
himself in a bed. Sunlight (shined) dimly through  
a curtained window. A sigh of relief came over  
him. The whole thing had only been a dream. He  
got up and walked over to the window and pulled  
the curtain. His very blood froze as he saw  
the three suns in the sky.



# It's birds vs. history, critics say

HSA 11/7/2016

By Caleb Jones  
and Josh Ledermann  
Associated Press

**MIDWAY ATOLL, NORTH-WESTERN HAWAIIAN ISLANDS**  
>> The Battle of Midway was a major turning point in World War II's Pacific theater. The remote atoll around which thousands died is now a delicate sanctuary for millions of seabirds, and a new battle is pitting preservation of its vaunted military history against the protection of its wildlife.

Halfway between the United States and Asia, Midway's three islets are surrounded by vibrant coral reefs and are home to the biggest colony of Laysan albatrosses on Earth. The large white-and-black seabirds pair off and mate for life, nesting and raising their young on Midway.

President Barack Obama recently traveled here to announce the expansion of the Papahānaumokuākea Marine National Monument, now the world's biggest oceanic preserve.

"I look forward to knowing that 20 years from now,

40 years from now, 100 years from now, this is a place where people can still come to and see what a place like this looks like when it's not overcrowded and destroyed by human populations," Obama said.

But Midway is a place where many people have lived, and perished — almost 3,000 in the historic conflict with Japan, which took place mostly in the waters north of the atoll. And the public hasn't been allowed to visit the refuge or the battle monuments for years.

About 50 agency staff and volunteers live on the

atoll at any given time, staying in renovated military housing.

During its military prime, up to 5,000 people were stationed on Midway. A public visitation program in the late 1990s allowed 100 people per week, plus support staff, to stay on the island.

Today, only volunteers, researchers and journalists can get a permit to visit the remote atoll. Approval of a permit request can take up to a year and isn't guaranteed. Exceptions are made, such as for the battle's upcoming 75th anniversary, when about 25 people will attend a ceremony.



The U.S. Fish and Wildlife Service "has every right and obligation to protect the wildlife, but they also have an obligation to protect the historic sites and the meaning of Midway," said James D'Angelo, founder of the International Midway Memorial Foundation. "It is precisely because of the men that lived and died that that memory should never be forgotten."

Six months after the Pearl Harbor attack, American forces turned away the Japanese at Midway and went on the offensive. In all, 2,500 Japanese and 307 Americans were killed in the battle.

The Midway Atoll National Wildlife Refuge was established in 1988 when the atoll was still under Navy control. In 1996 management was transferred to the wildlife agency with a mandate to maintain and preserve not only the wildlife, but the atoll's historical significance.

Since 2000 the site has been designated as a

Please see MIDWAY, B3



# MIDWAY

*Continued from B1*

National Memorial to the Battle of Midway. The original seaplane hangar is rusted and has shrapnel pockmarks. Behind it a huge pile of desks, bicycles and broken speedboat engines awaits removal.

Along Midway's paths are piles of feathers with rings of plastic in the middle — remnants of birds that died with the plastic in their guts. Each year, the agency removes about 20 tons of plastic and debris that washes ashore.

The critically endangered short-tailed albatross can be found only on Midway and one other small Pacific island. Endangered Hawaiian monk seals and green sea turtles also frequent Midway's shores.

In 1996 the government reached an agreement with the Georgia-based Phoenix Midway Corp. to help operate the island's visitor program, with lodging, a restaurant, a dive shop and bowling alley, at no cost to taxpayers.

But in its six years of operation, the company had only one profitable month, according to a document submitted to Fish and Wildlife and provided to the Associated Press by the memorial foundation.

In mid-2001 the company pulled out. After that there was either no visitor program or a limited one.

"It's financial suicide for anybody to think that they can go in unless they were given the carte blanche

rights to run the island," said Bob Tracey, Phoenix Midway's former executive vice president.

In 2014 the Congressional Subcommittee on Fisheries, Wildlife, Oceans and Insular Affairs held an oversight hearing about Midway. "Objectively observers can certainly question whether it was a mistake to transfer this sacred ground to an agency that is far better equipped to maintain birds than visitors," said the chairman, Rep. John Fleming, R-La.

The Government Accountability Office concluded in 2016 that the wildlife agency maintained most historic properties but tore down seven others without the required public notice.

But the GAO noted funding had been slashed to less than \$3 million from \$4 million annually, resulting in the end of public visitation in 2012.

Officials say more than \$1 million a year would be required to re-establish a

visitation program, excluding startup costs.

Matthew Brown, Fish and Wildlife's superintendent for the marine national monument, said sustainable tourism is feasible despite the challenges. "It's a very logistically challenging place to do anything," he said.

Its World War II-era structures weren't built to last, and some are coated in lead paint, Fish and Wildlife spokeswoman Megan Nagel said, adding that Laysan albatrosses ingest the paint chips, causing illness.

Too many visitors could disturb the delicate ecosystem, Nagel said.

Some contend a private company could easily profit from a Midway visitation program, but "evidence shows that is historical fiction," Guam Rep. Madeleine Bordallo said at the 2014 congressional hearing.

"Preservation of historic resources is expensive. If we value it as a country, we should pay for it."



171

## Preliminary Investigation of movements and concentrations of green sea turtles in coastal habitat on the North Shore of Oahu.

By David L. Clarke

### Abstract

In tropical and sub-tropical areas green turtles, *Chelonia mydas* are known to use near shore areas such as rivers, mangroves, beaches and shallow bay areas for resting. Green sea turtle movements were monitored by visual counts at the Anahulu River mouth at Hale'iwa harbor for a total of 9 evening and 2 morning observation sessions during the months of September and October 2008—a period of almost no surf or rainfall on the north shore of Oahu. During 22.2 hours of observation, a total of 968 green sea turtles were observed moving either upstream or downstream in the Anahulu River. 12.6% (n=122) were recorded as being juveniles (<45cm) and 87.4% as either sub-adults or adults. The greatest number seen during an observation session was 205 (morning of September 13, 2008), and although most were moving downstream, a significant number (n=31) were moving upstream (although some double counting may have occurred). As few as 11 turtles were observed during a 120 minute evening viewing session. As many as 20 individuals were recorded during a five minute recording interval. On average, during a two hour viewing session, 88 individuals were recorded.

All turtles appeared in good health, with only 1% being recorded as having tumors and 2 with missing fins—one was observed with fishing line and a plastic bobber attached to its fin but it was moving freely. A total of 26 adult males were identified but no sexual breakdown was determined. Satellite tagging by the NOAA Fisheries PIFSC confirmed the use of the Anahulu River habitat along with the sea areas of Kai'aka, Waialua, and Haleiwa Bays. The track clearly shows the turtle moving into the Anahulu River. Most turtles observed in the Anahulu River are speculated to be resident to the North Shore of Oahu. During the sampling period the Anahulu River mouth was observed to be an area of considerable water-based recreational activities including swimming, stand up, canoe and kayak paddling and fishing – but the human activities appeared to have little or no impact on the turtle's movements—tides and water flow appear to be greater issues for the turtles. This preliminary study documents what may be one of the most significant green sea turtle resting habitats in the main Hawaiian Islands. Further monitoring and investigation is highly recommended. The use of sonic tags may better detail the movements of turtles in the river throughout the year. At certain times of the year, and periods of the day the Anahulu River mouth may be one of the best areas in all of Hawaii to see turtles in their natural environment.



He became aware of reports of *honu* in unknown numbers being seen moving in and out of the Anahulu Stream early in the morning and in the evening in May 2008. Mr. Balazs alerted us to this fact in late August and suggested that we go there to see the turtles coming in (upriver) in the early evening or going out (down stream) in the morning. Mr. Balazs indicated that although it is well documented that turtles will use mangroves and near shore areas as resting and sleeping sights – the extent and degree to which the Anahulu Stream was being used was essentially unknown. He was interested in finding someone to monitor the situation and I volunteered. The results of this monitoring are the focus of my project.

19/24

### Project Site - Anahulu Stream

The Anahulu River (also called Anahulu Stream) is the longest watercourse on the island of O'ahu in Hawai'i. The Hawaiian meaning of the name is "ten days". Anahulu Stream is formed on the western side of the northern part of the Koolau Range approximately 7 mi (12 km)

The satellite tracking system is called Argos. Argos is a French satellite system. A signal is sent from the tag – in this case a Telonics model TAM-2619 (see Figure 2) – to a satellite circling the earth (see; <http://www.telonics.com/products/argosMarine/>). The tag was deployed by G. Balazs. To do this first one needs to choose your subject or platform, which in this case was a green sea turtle, and then the tag is attached to the turtle using resin and fiberglass. This all needs to be done by a trained professional. Then the tag is registered into a tracking system



and then position coordinates are obtained when the turtle comes to the surface of the water. These are sent to a satellite by the tag--and then onto a computer at a base station on earth -- in this case to a person's computer in Oregon. The person then plots the coordinates electronically on a map and that is how the object (turtle) is tracked. The plots of the tracks show where the turtle went. This was all done by the NMFS PIFSC -- I was not involved in the tracking-- but Mr. Balazs made the information available to me to show an example of the range of one of the turtles that use Anahulu River.

**Results**

**Species**

It is believed that all turtles observed were green turtle *Chelonia mydas* -- all recorded observations were made in water that was clear enough to confirm the species, however, there is

of the tag results suggest:

moving offshore spending time in Kai'aka and Waialua Bays (Figure 5). A preliminary analysis

The satellite tag shows the specimen moving up river at least 1.5 kilometers and then

**Movements - in the Ocean**

upstream sometime caused turtles to run into one another.

many turtles in the small channel that they were crawling over one another and those coming

active in terms of a 5 minute bin--with several bins having 20 turtles recorded. There were so





"The turtle is highly focused or fixated on the immediate near shore areas of Haleiwa. No long distance movements have been documented. Coupled with what we know from visual observations of turtles using the Anahulu River area, the conclusion could be drawn, with some informed opinion, that RT exhibits behavior representative of most of many turtles known to use the area. That is, going into the river to rest, and foraging in the immediate region of Haleiwa. Another significant finding is the use of the Haleiwa Small Boat Harbor. The high accuracy of the Argos position confirms that at time the turtle (hence likely other turtles) enters into the harbor-- like a small boat seeking shelter. And last, some of the positions for RT are sufficient to say that at times use is made (for resting likely) of river areas well inland up beyond the bridge."

-G. Balazs, per. comm.

## Discussion

The mouth of the Anahulu River proved to be an excellent place to monitor green turtles in their natural habitat. Evening or early afternoon proved to be a good time to monitor the turtles coming into the river while mornings were a little harder. My data set is limited by the number of morning observations and that is one area that needs to be expanded (at least 2

unknown but I suggest is that they sleep upriver to avoid sharks, since some sharks are nighttime hunters. There may be other reasons such as to cleanse their shells in fresh water to eliminate parasites - or animals that feed or cling to turtles. I saw several turtles stopping in mid-channel and allow fish to pick on their shells--shell cleaning stations are well documented in other places in Hawaii.



hath not promised  
without rain,  
without sorrow,  
without pain.  
God hath promised  
length for the day,  
rest for the labor,  
help for the way,  
peace for the trials,  
aid from above,  
filling sympathy,  
and dying love.

Family of Funeral Homes  
www.martenson.com



# 集美鳌园

集美鳌园是陈嘉庚先生纪念馆的重要组成部分，是全国重点文物保护单位，是陈嘉庚先生“寓教于游、寓教于乐”教育思想的深刻体现。是一本生动的教科书，陈嘉庚纪念馆的基本陈列获评全省博物馆十大精品展。

**印象厦门**  
Memory XiaMen  
鳌园春晖 (厦门集美区)

集美，是陈嘉庚先生的故乡。鳌园，位于“嘉庚公园”内。鳌园中建筑和雕刻，均体现他寓教于游、寓教于乐的思想，包含中外古今、天文地理、科技文教、书法绘画、动物植物、工农业生产等诸多方面，无所不有，无所不包，博大精深。

印象厦门·鳌园春晖



集美鳌园门型



集美鳌园门票

票价: 30元

(全价票)

厦门集美鳌园景区  
景区门票

发票号码:

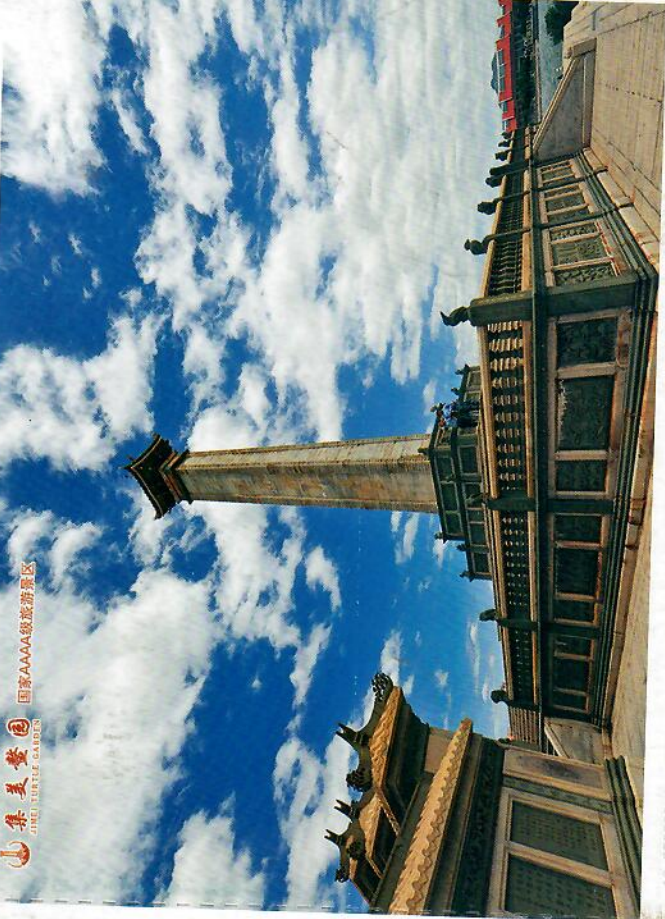
00010236

售票代码:

1350216007Z1



R000310236



国家AAAAA级旅游景区

集美鳌园  
JIMEI TURTLE GARDEN

集美鳌园景区(含延平史纪念馆、集美文化广场、鳌园、嘉庚公园、延平史纪念馆、归来堂、白鹤亭) 是厦门市集美区鳌园景区、国家AAAAA级旅游景区、全国文明单位、集美大学爱国主义教育基地、福建省爱国主义教育基地、集美大学“寓教于游、寓教于乐”教育品牌的深刻体现。是“一馆一书”社会书、延平史纪念馆的集美馆群群全案博物馆十大精品展。

集美鳌园  
JIMEI TURTLE GARDEN

温馨提示: 本景区实行通票, 当日有效, 售出不退

19-350209-11-0029-030 中国厦门集美鳌园门票分公司发布

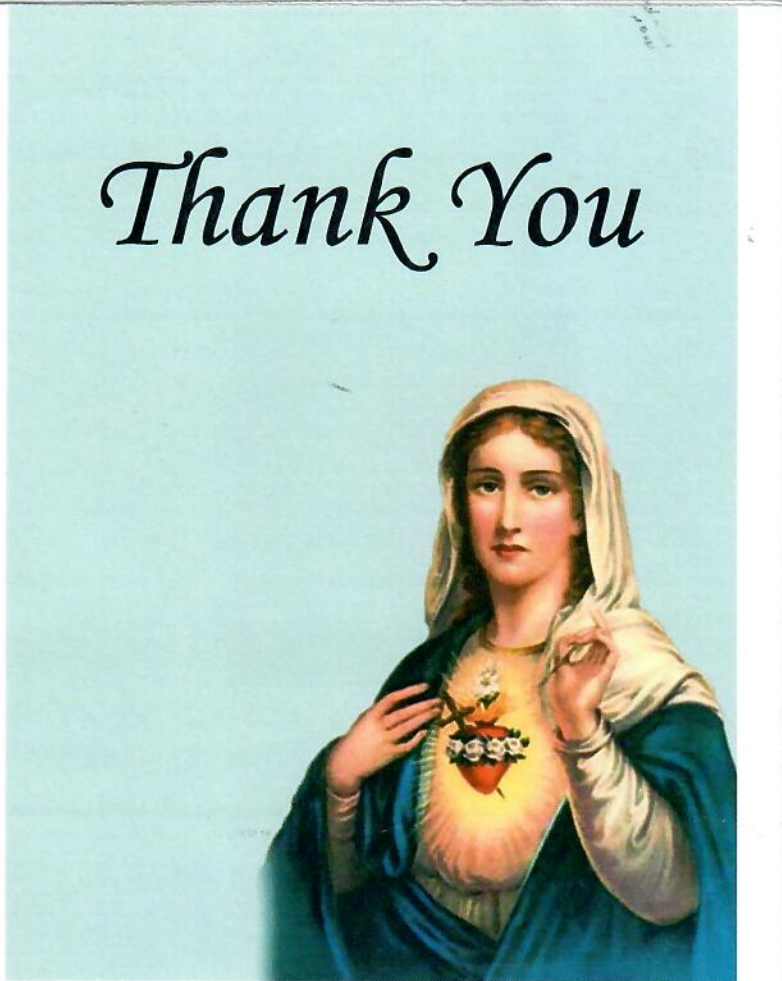
鳌园由门廊、木、中式灰廊、故事的青石铺陈。

出品: 凤凰工作室



176

# Thank You



*God hath not promised  
a path that is always blue,  
or strewn pathways  
for our lives to follow;  
God hath not promised  
a life without rain,  
or without sorrow,  
or without pain.  
God hath promised  
strength for the day,  
aid for the labor,  
direction for the way,  
comfort for the trials,  
help from above,  
loving sympathy,  
and dying love.*

in Family of Funeral Homes  
[www.martenson.com](http://www.martenson.com)



249

and then position coordinates are obtained near shore areas of Haleiwa. No  
 These are sent to a satellite by the vessel with what we know from visual  
 this case to a person's computer. The conclusion could be drawn, with  
 on a map and that is how the foraging of most of many turtles  
 turtle went. This was the Haleiwa Small Boat  
 Mr. Balazs made a shelter. And last, time the turtle (hence  
 turtles that use the boat (for resting  
 Results  
 Species tag and with up to 100 turtles (or more) using the  
 more than \$300,000 (!!). Mr. Balazs said that there are cheaper ones  
 and this may be the best way to monitor the area year-round - through periods of  
 rain and murky water. I'd like to look into this in the future.

conclusion could be drawn, with  
 foraging of most of many turtles  
 Haleiwa Small Boat  
 time the turtle (hence  
 the boat (for resting



significantly affected by humans—however this should be studied more fully. None the less the  
 Despite considerable use by humans the activities of the turtles do not appear to be  
 fashion.  
 using the Anahulu River and to see if other streams in the area are being used in a similar  
 unique situation be monitored and studied more fully to better understand why green turtles are  
 channel becomes much larger, and the water is murkier. It is highly recommended that this  
 also appears to continue during the winter months but is difficult to quantify because of the

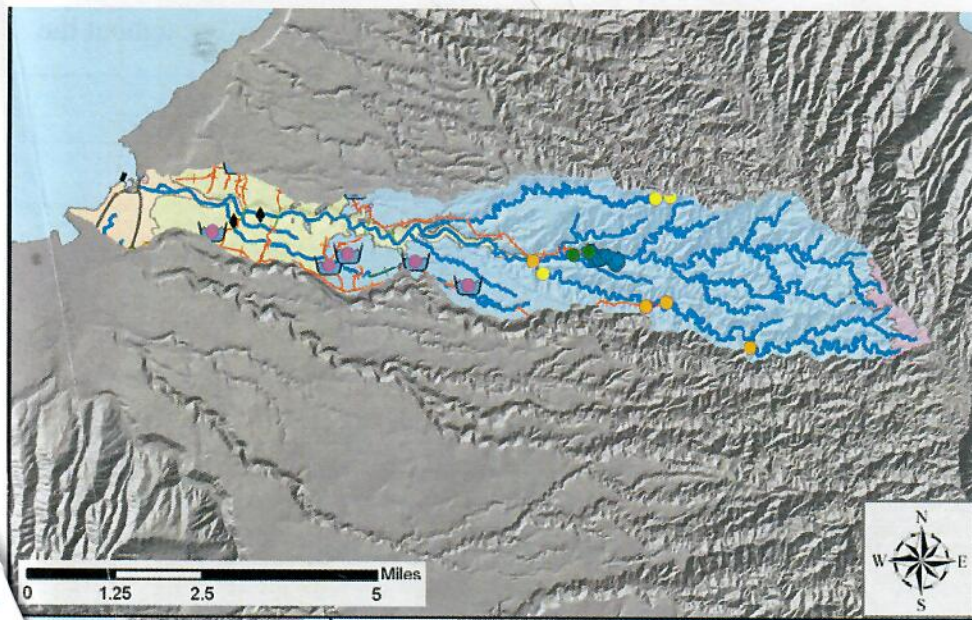
a city roadway, and in a rural or urban part of Oahu (if the carcass is on a city street).  
 In this case the roadway is overseen by the state Department of Transportation, and the number to call is 831-6714, the state highways division hotline. Press 1 for dead animal pickup. After hours, call 485-6200.  
 Since we were calling to  
 If it had been a city street within Honolulu, the number to call would be 768-3200. Press 1 and then press 8, to connect to the Honolulu Refuse Collection Yard. It's open 6 a.m. to 2 p.m. Mondays through Saturdays.  
 Areas outside Honolulu are covered by the Department of Facility Maintenance  
 pickup" on the first page of city and county listings in the phone book.  
 Your query begs the question of how the general public is supposed to know whether the city or state oversees a given thoroughfare. One way to find out is to call the city Department of Design and Control's Land Division at 768-8725.



Figure 6. Frequency of occurrence in 5 minute sampling bins on morning of Sept. 13, 2008 numbers of turtles recorded going in or out of the Anahulu Stream.

Table 1. Summary of turtle observations at Anahulu Stream. Oahu during September through November 2008. See text for details. **Detailed breakdown of each day provided upon request.**

Figure 1



JAMES BURNS 1937-2017

next  
PAGE →



JAMES S. BURNS / 1937-2017

# Former judge is recalled

3/10/2017 HSA

By Leila Fujimori  
lfujimori@staradvertiser.com

Retired Intermediate Court of Appeals Chief Judge James S. Burns, who served more than 30 years on the bench, died Thursday at age 79 after a long bout with throat cancer.

Burns was married for 33 years to TV journalist Emme Tomimbang. Six years ago he began treatment for stage 4 throat cancer. She served as his caregiver. He became hers when she suffered a brain aneurysm.

"With a grateful heart, mahalo to all who have shared their thoughts," Tomimbang wrote Thursday on her Facebook page. "My soulmate, love of my life and husband of 33 years has gone to the heavens — out of pain and suffering."

Burns also leaves behind son Brendan and daughter

Meredith.

"Jim Burns was a wise and humble man who was always guided by his love of Hawaii and a strong sense of fairness and common sense," Hawaii Supreme Court Chief Justice Mark Recktenwald said in a written statement. "He was a model of integrity and always exemplified the utmost professionalism."

Burns, the youngest child of Gov. John A. Burns, was a lawyer by the time his father took office in 1962, but couldn't go before a judge his father had appointed.

Instead he found himself practicing family law because the Family Court judge was not an appointee of his father, he told PBS Hawaii TV in 2014.

Burns, who bore a striking resemblance to the governor, said that while his father was a "very significant

person," he didn't think of his own life as worthy of publication.

"I think you really have to live your own life, and find your own niche, and become as good at it as you possibly can," he said. "You don't live your father's life; you live your life, and that's what I tried to do, without embarrassing him."

"Piece by piece" he found his own path, he told PBS.

William Richardson, appointed chief justice by Gov. Burns, encouraged the younger Burns to become a judge, and eventually he tested the waters in 1976 as a District Court per diem judge.

In 1977 Gov. George Ariyoshi appointed Burns as First Circuit Court judge. In 1980 he was among three judges appointed to the newly formed Intermediate Court of Appeals, and in



JAMES  
BURNS

1937-2017

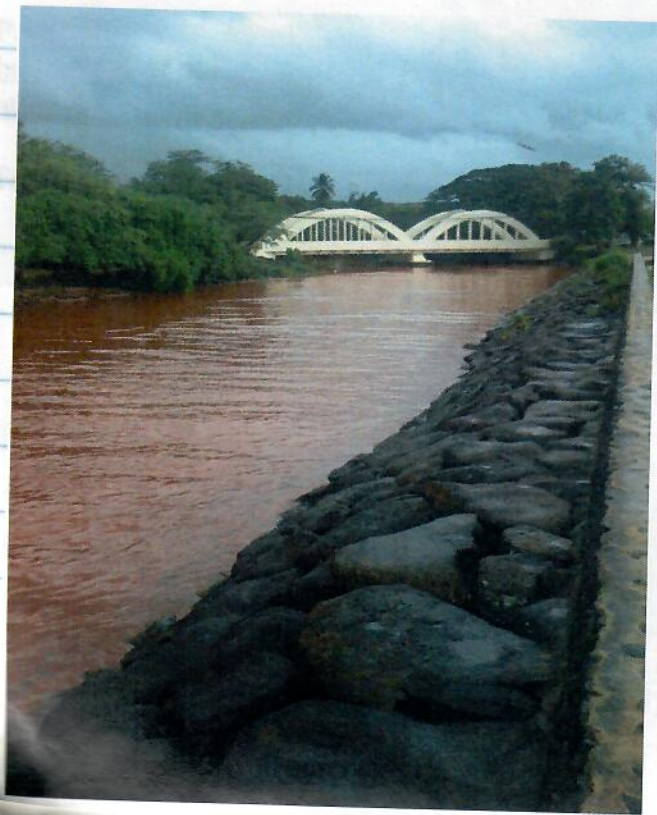
next  
PAGE



Figure 3



Figure 4





# as 'a model of integrity'

1982 became chief judge, serving until his retirement in 2007.

"Commonly regarded as the father of the ICA," Burns was responsible for establishing the culture and spirit of ohana there, said Chief Judge Craig Nakamura. "He shaped and nurtured the court and inspired all who have worked here."

Born in Honolulu on April 19, 1937, Burns graduated in 1955 from Saint Louis High School. He earned his Bachelor of Science degree from Benedictine University and his law degree from Villanova Law School. He served two years in the Army and 12 years in the Hawaii National Guard. As a lawyer he was a solo practitioner for 12 years.

Burns "was probably the humblest leader one is ever likely to meet," said Avi Soifer, dean of the University of Hawaii William S. Richard-



COURTESY PHOTO

**James Burns:**

*Among three judges appointed to the newly formed Intermediate Court of Appeals, he is credited with establishing the culture of the court*

son School of Law, in a written statement.

Burns, an adjunct professor and board member, left his legacy through talk-story sessions with students and practical advice to all, was

much beloved and quietly inspired others, he said.

Soifer added, "A man of few, well-chosen words, practicality and dry humor, Judge Burns nonetheless changed the law in Hawaii in many ways as a judge."

One ruling involved a banyan tree branch hanging into a neighbor's yard. Hawaii had no law on the subject, Burns told PBS. He and his fellow judges ruled the boundary line was the deciding factor. Anything on a person's side of the property line, including mangoes from the neighbor's tree, was the property owner's.

Burns also recalled serving as replacement Supreme Court judge who cast the tie-breaking vote in a same-sex marriage case in favor of sending it back to the Circuit Court to allow a hearing, which the lower court had not.



Table 1. Summary of turtle observations at Anahulu Stream, Oahu during September November 2008. See text for details. Detailed breakdown of each day provided upon request.

Day	Minutes	Bins	Time	Total	Small	Med/Large	Tumors	Males	# going In	# going out
1	120	25	Evening	103	16	87	1	6	103	1
2	105	21	Morning	205	21	184	0	13	31	143
3	115	23	Evening	95	6	89	0	0	95	0
4	170	34	Evening	90	12	78	0	0	90	0
5	110	22	Evening	133	16	117	0	0	134	1
6	165	33	Evening	31	3	28	1	1	31	0
7	0	0	Morning	0	0	0	0	0	0	0
8	130	26	Evening	81	7	74	3	1	81	0
9	120	24	Evening	11	2	9	1	0	11	0
10	115	23	Evening	104	22	82	1	4	104	3
11	180	36	Evening	115	17	98	2	1	125	0
Totals	1330	267		968	122	846	9	26	805	148
adv.	120.9	24.3		88	17	76.9				
%					12.6	87.4	1.0			

### Jars record Earth's magnetic field

Earth's magnetic field — which deflects harmful space radiation — has been weakening, losing about 10 percent of its strength over the last two centuries. Should we be worried?

Ancient pottery suggests not.

In a paper published recently in PNAS, a team of scientists examined 67 jar handles collected from excavations of ancient Judah. The ceramic jars encoded a record of Earth's magnetic field as they were fired in kilns and then cooled.

Examinations of the oldest jars, from the late eighth century B.C., indicate that the field was 2-1/2 times stronger than it is today. But its intensity declined by about one-third in less than 30 years.

The decline may well be part of a natural cycle, but geophysicists still are unable to explain how it works.

New York Times

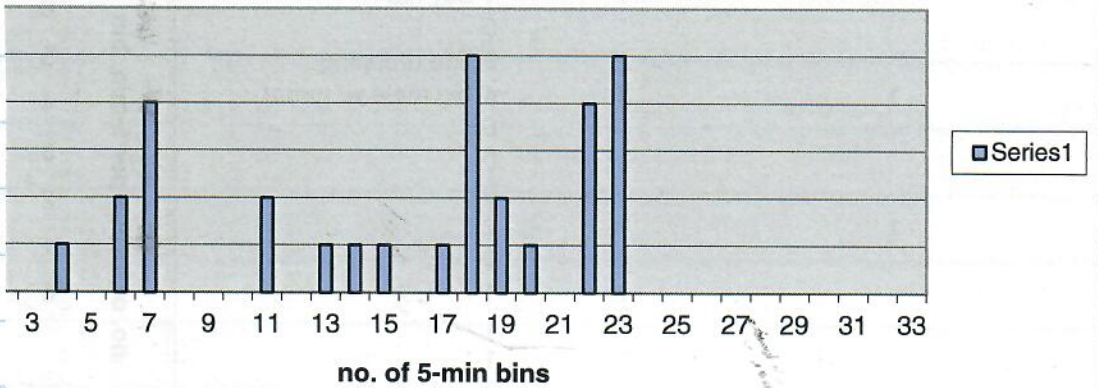
HSA

3-28-2017



081

afternoon, oct. 15, 2008



Dear George Balazs

I'm glad to see you again

at the Turtle meeting

Some days

I wish I met Turtle in person

I hope the New year finds you in good health and excellent spirit!

Ayane



Dear. George Balazs

I'm glad to see you again.  
at the Turtle meeting.

Some day.

I wish I meet Turtle in Hawall.

I hope the New year finds you in good  
health and excellent spirit!

Ayane

Date

15-Oct

sm

med/g

total

remarks

16:10  
16:15  
16:20  
16:25

1 warm bottom  
0 cold top  
0  
1 bay flat

6



Dearest George

Dec. 2016

THINKING OF YOU, AS THE YEAR  
 COMES TO A CLOSE; I AM REMINDED  
 OF THE AMAZING PEOPLE IN MY LIFE  
 WHO HAVE CONSTANTLY SHOWN THEIR  
 SUPPORT & GRACE. AS I TRAVE WITH  
 THE TURTLES IN XIAO LIU QIU WITH THE  
 DREAM OF MAKING IT THE 'GREENEST'  
 ISLAND IN TAIWAN. MAY 2017 BRING  
 TWICE AS MANY SUCCESS. THANK  
 YOU FOR THE HEAVEN LOVE IN TAIWAN,  
 RIGHT BACK AT YOU & LINDA. HAPPY  
 HOLIDAYS. *Wendy*

P.S. HOPE TO SEE YOU  
 SOON!! XIAO LIU QIU  
 MEETS YOU.



LARSENIA HUI  
 #3 CURTAIN ST.  
 DISTRICT 112, BETHUN  
 TAPE, TAIWAN  
 R.O.C

GEORGE BALAZS

992 AWAANAANUA PLACE

APT A

HONOLULU, HAWAII 96825

U.S.A

我想跟你一樣，當環保尖兵。

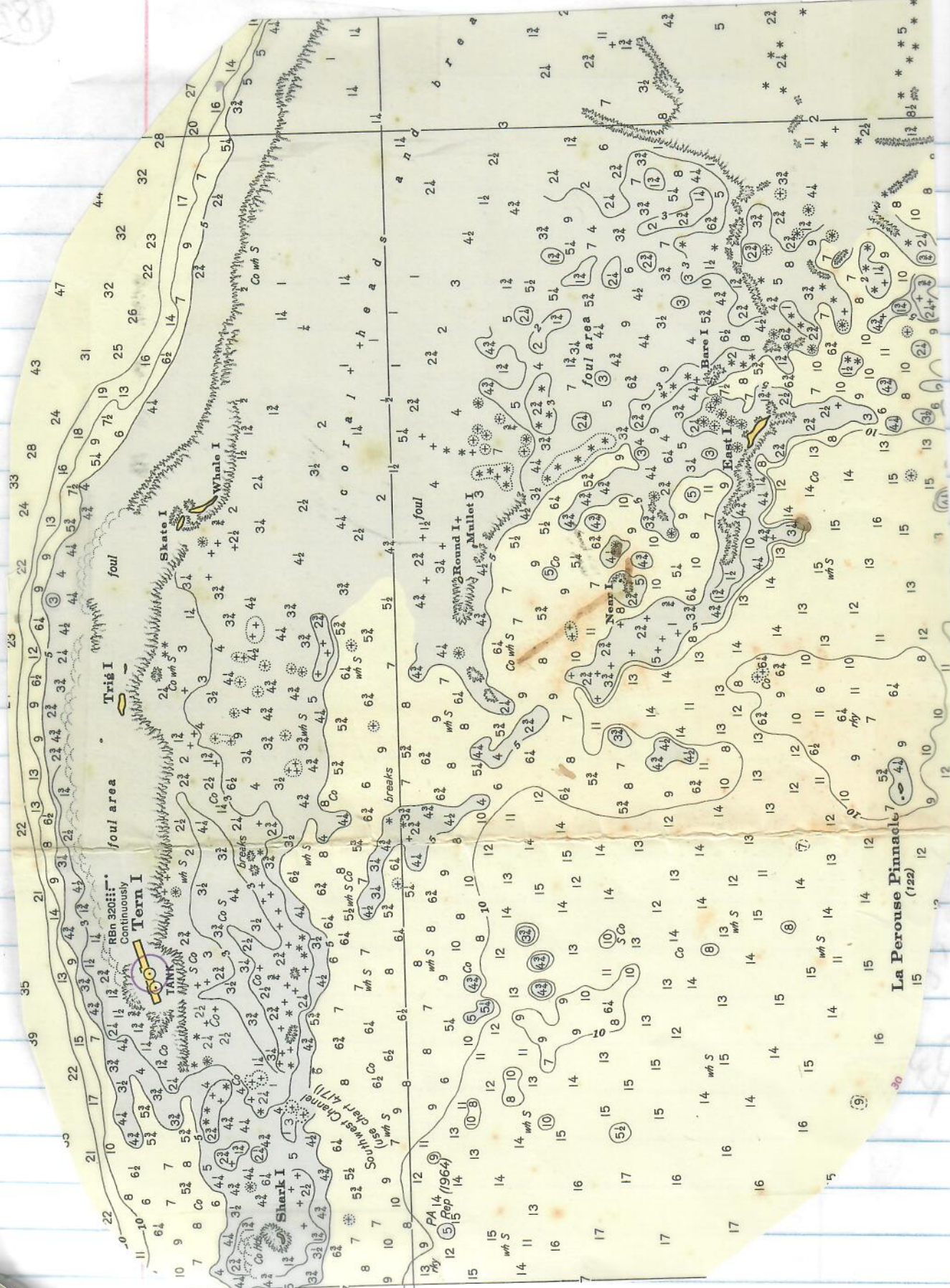
我♥小琉球。

2017  
 12/17  
 12/17  
 12/17





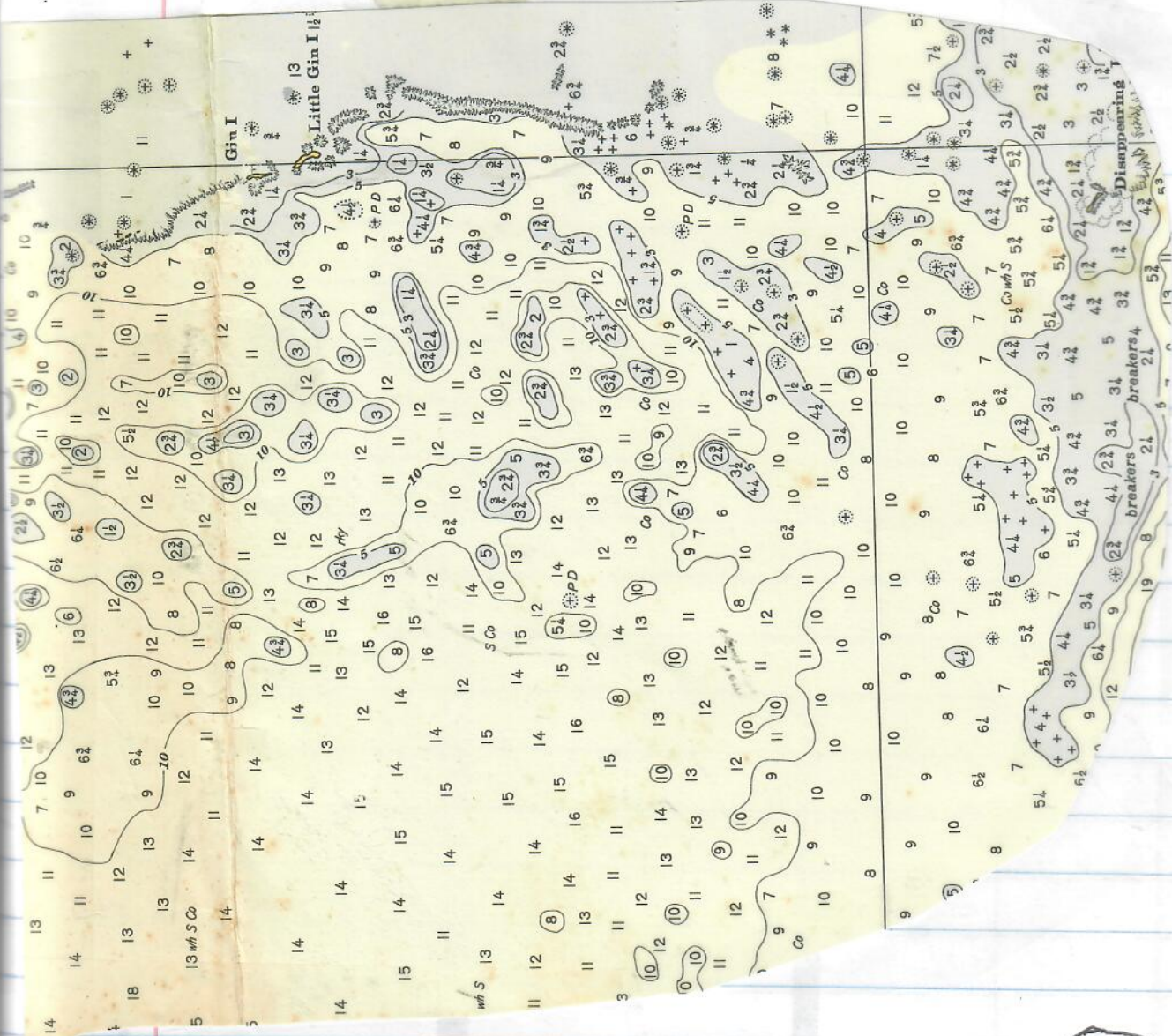
38



La Perouse Pinnacle (122)

39





184

谢谢你的中文  
 谢谢你的中文

"Thank you" in  
 Simplified  
 Mandarin



Despite their great diversity, all the expressions of Chinese folk religion have a common core that can be summarised as four spiritual, cosmological, and moral concepts<sup>[13]</sup>—*Tian* (天), Heaven, the source of moral meaning, the utmost god and the universe itself; *qi* (气), the breath or substance of the universe; *jingzu* (敬祖), the veneration of ancestors; *bao ying* (报应), moral reciprocity—, and two traditional concepts of fate and meaning<sup>[14]</sup>—*ming yun* (命运), the personal destiny or burgeoning; and *yuan fen* (缘分), "fateful coincidence",<sup>[15]</sup> good and bad chances and potential relationships.<sup>[15]</sup> Yin and yang is the polarity that describes the order of the universe,<sup>[16]</sup> held in balance by the interaction of

Being Chinese culture a holistic system, in which every aspect is a part of a whole, Chinese folk religious practice is often intermingled with political, educational and economic concerns.<sup>[198]</sup> A gathering or event may be encompassed with all of these aspects; in general, the commitment (belief) and the process or rite (practice) together form the internal and external dimensions of Chinese religious life.<sup>[198]</sup> In village communities, religious services are often organised and led by local people themselves.<sup>[52]</sup> Leaders are usually selected among male heads of families or lineages, or village heads.<sup>[52]</sup>

[https://en.wikipedia.org/wiki/Chinese\\_folk\\_religion](https://en.wikipedia.org/wiki/Chinese_folk_religion)

24

This faith expresses into large-scale festivals participated by members of the whole village or larger community on the occasions of what are believed to be the birthdays of the gods or other events,<sup>[54]</sup> or to seek protection from droughts, epidemics, and other disasters.<sup>[54]</sup> Such festivals invoke the power of the gods for practical goals to "summon blessings and drive away harm".<sup>[54]</sup> Special devotional currents within this framework can be identified by specific names such as Mazuism (*Mazujiao*),<sup>[111]</sup> Wang Ye worship, or the cult of the Silkworm Mother.<sup>[112]</sup>



186





391

Instead of signing the demise of traditional religiousness, China's economic development has brought a spiritual renewal.<sup>[55]</sup> The worldview of the Chinese indigenous religion is distinctive;<sup>[55]</sup> its images and practices are shapen by the codes of Chinese culture, helping Chinese people to face the challenges of modernisation.<sup>[55]</sup>

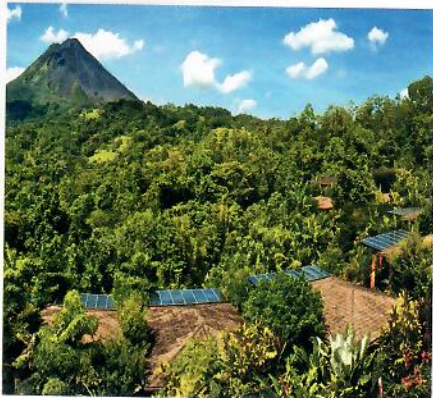
Given much space for popular religion to develop.<sup>[54]</sup> In recent years, in cases, local governments have taken an even positive and supportive attitude towards indigenous religion in the name of promoting cultural heritage.<sup>[54]</sup>



The Temple of the Town God of Wenaio, Magong, Taiwan.



Temple of the White Sulde of Genghis Khan in the town of Uxin in Inner Mongolia, in the Mu Us Desert. The worship of Genghis is shared by Chinese and Mongolian folk religion.<sup>[note 12]</sup>



## Nayara Hotel, Spa & Gardens

Arenal Volcano National Park, Costa Rica

Member of Small Luxury Hotels of the World

Nayara Hotels is a collection of two world-renowned properties located in Arenal Volcano National Park in Costa Rica. With only 50 freestanding villas, the hotel is a unique luxury experience set directly in the lush rainforest. Sister property Nayara Springs (adults only) features just 35 oversized villas with plunge pools fed by hot springs. The sister properties are connected by a pedestrian footbridge. A member of Small Luxury Hotels of the World, Nayara Hotels were rated by Travel + Leisure the #1 and #2 resorts in Central America in 2016.



ZHOU YOUGUANG /  
1906-2017

HSA 1/16/2017

## Linguist created China's Pinyin writing system

Associated Press

**BEIJING** >> Zhou Youguang, considered the father of modern China's Pinyin Romanization system, has died at the age of 111.

Born in 1906 during the Qing Dynasty, Zhou passed away at his home in Beijing on Saturday, one day after celebrating his birthday.

Zhou moved to the U.S. as a young man and worked as a banker on Wall Street. Returning to China after the communist victory in 1949, he was put in charge of a committee working on a new system to allow Chinese characters to be converted into Roman script. Pinyin was later adopted by the communist People's Republic and now has largely become the global standard.

In his later years, Zhou became a government critic, penning a number of books, most of which were banned.

## Hunting good for ecosystem, families

I am thoroughly appalled by a letter-writer's malicious depiction of hunting ("State's promotion of hunting disturbing," Star-Advertiser, Letters, Dec. 30).

Would he rather see mass starvation of animals because the land's carrying capacity is over its limit? For several generations my family has hunted responsibly, helping to manage introduced game species for the good of Hawaii's habitat.

Ka 'ike a ka makua he hei na ke keiki. All that I know of hunting I learned from those older than me.

He should know that family-oriented hunting creates precious memories and stronger bonds, not only between immediate family but with others in the hunting community.

The social aspects of hunting go far beyond the hunt itself. When we prepare the meat and share it with friends and family, it brings people together.

While my family and I eat free-range, non-GMO venison burgers, others eat hormone-injected beef from a cruelty-ridden, mainland slaughterhouse.

*Mackenzie Plunkett*  
Hauula

1/5/2017 HSA



2/25/17 w/ DAISY

中国广东省汕头市大学路 243 号汕头大学  
李平 13924751249

Dr. Li Ping (phone:13924751249)

Marine Biology Institute, Shantou University  
Daxue Road 243, Shantou, Guangdong 515063, P.R. China

Daxue Road 243, Shantou, Guangdong 515063, P.R. China

李平 13924751249







Kui Xing, the god of exams, made up of the characters describing the four Confucian virtues (Side 四德), standing on the head of the ao (鳌) turtle (an expression for coming first in the examinations), and pointing at the Dipper (斗)". [note 14]

## Collagen in dinosaur rib is oldest ever discovered

By Amina Khan  
Los Angeles Times

2/3/2017  
HSA

Dinosaur paleontology has long been the domain of bones and teeth — but now soft tissues could be changing the game. Scientists say they have discovered collagen preserved in a 195 million-year-old rib from a long-necked Lufengosaurus.

The protein fragments, described in the journal *Nature Communications*, are more than 100 million years older than the previous record-holder, shattering the notion that such soft tissues are short-lived and cannot be preserved. These kinds of samples could offer paleontologists a whole new window through which to study these long-gone creatures.

For a long time scientists believed that protein molecules, which make up soft tissues, could last only about 4 million years or so; only hard tissues like bone and teeth could be preserved over longer geologic time scales. Soft tissues like cartilage and muscle typically decay long before they can be preserved.

Recent studies have begun to challenge that notion. A study in 2015 found evidence of collagen fibers and red blood cells within a 75 million-year-old claw from a carnivorous dinosaur. That finding met with no small amount of skepticism, said Susannah Maidment, a vertebrate paleontologist at the University of Brighton who was not involved in the current study, but who co-authored that 2015 paper.

The new fossil evidence comes from a Lufengosaurus, a genus of early sauropodomorph dinosaurs that probably walked on two legs instead of four (unlike their fellow long-necked cousins, the sauropods). Rather than removing the sample from the bone, and thus risk damaging or contaminating it, the scientists used confocal Raman spectroscopy and a type of infrared spectroscopy to study the insides of the bones in detail.

Within a rib the scientists found fragments of proteins, likely from the collagen in the bone's vascular canals. Those canals were also polka-dotted with collections of hematite — an iron oxide that may have come in part from hemoglobin and other iron-rich proteins in the dinosaur's red blood cells. It's possible that this iron may have acted as an antioxidant, the authors wrote, preventing the proteins from decaying further.



## Bixia and mother goddess worship

[https://en.wikipedia.org/wiki/Chinese\\_folk\\_religion](https://en.wikipedia.org/wiki/Chinese_folk_religion)

The worship of mother goddesses for the cultivation of offspring is present all over China, but predominantly in northern provinces. There are nine main goddesses, and all of them tend to be considered as manifestations or attendant forces of a singular goddess identified variously as Bixia (*Bixiá Yuánjūn* 碧霞元君, the "Princess of the Blue Dawn"; also known as *Tiānxīān Niángniáng* 天仙娘娘, "Heavenly Immortal Lady", or *Tàishān Niángniáng* 泰山娘娘, "Lady of Mount Tai",<sup>[x]</sup><sup>[188]</sup> or also *Jiǔtiān Shèngmǔ* 九天圣母,<sup>[187]</sup> "Holy Mother of the Nine Skies"<sup>[xi]</sup><sup>[188]</sup> or Houtu, the goddess of the earth.<sup>[189]</sup> Bixia herself is identified by Taoists as the more ancient goddess Xiwangmu,<sup>[190]</sup> Goddesses are commonly entitled *mǔ* (母 "mother"), *lǎomǔ* (老母 "old mother"), *shèngmǔ* (圣母 "Holy Mother"), *niángniáng* (娘娘 "lady"), *nǎimai* (奶奶 "granny"). The additional eight main goddesses of fertility, reproduction and growth are:<sup>[191]</sup>

- Banzhen Niangniang (癩疹娘娘), the goddess who protects children from illness;
- Cuisheng Niangniang (催生娘娘), the goddess who gives swift childbirth and protects midwives;
- Naimu Niangniang (奶母娘娘), the goddess who presides over maternal milk and protects nursing;
- Peigu Niangniang (培姑娘娘), the goddess who strengthens young girls;
- Peiyang Niangniang (培养娘娘), the goddess who protects the upbringing of children;
- Songzi Niangniang (送子娘娘) or Zisun Niangniang (子孙娘娘), the goddess who presides over offspring;
- Yanguang Niangniang (眼光娘娘), the goddess who protects eyesight;
- Yimmeng Niangniang (引蒙娘娘), the goddess who guides young children.



Temple of Mazu  
Tianhou<sup>[1]</sup> in Qingdao,  
Shandong.



Temple of Houtu in Jiexiu, Shanxi.



Altars of goddess worship are usually arranged with Bixia at the center and two goddesses at her sides, most frequently the Lady of Eyesight and the Lady of Offspring.<sup>[191]</sup> A different figure but with the same astral connections as Bixia is the Qixing Niangniang (七星娘娘 "Goddess of the Seven Stars").<sup>[xii]</sup> There is also the cluster of the Holy Mothers of the Three Skies (三霄聖母 *Sanxiao Shengmu*; or "Ladies of the Three Skies", 三霄娘娘 *Sanxiao Niangniang*), composed of *Yunxiao Guniang*, *Qiongxiao Guniang* and *Bixiao Guniang*.<sup>[192]</sup> In southeastern provinces the cult of Chen Jinggu (陳靖姑) is identified by some scholars as an emanation of the northern cult of Bixia.<sup>[193]</sup>

Other goddesses worshipped in China include Canmu<sup>[xiii]</sup> (蚕母 "Silkworm Mother"; or Cangu 蚕姑, "Silkworm Maiden"),<sup>[189]</sup> identified with Leizu (嫫祖, the wife of the Yellow Emperor), Magu (麻姑 "Hemp Maiden"), Saoqing Niangniang (扫清娘娘 "Goddess who Sweeps Clean"),<sup>[xiv]</sup><sup>[195]</sup> Sanzhou Niangniang (三洲娘娘 "Goddess of the Three Isles"),<sup>[195]</sup> and Wusheng Laomu, the goddess that is the central idea of many of the folk religious sects.<sup>[189]</sup>

#### Notes about the deities and their names

- i. The honorific *Tiānhòu* (天后 "Queen of Heaven") is used for many goddesses, but most frequently Mazu and Doumu.



3DS =  
N=41  
HONU NATION  
GHB PHOTOS gcb  
Kishia Sat Track  
HAINAN N=57

Begece  
nobody else  
gate to  
PHONE A Head  
GHB Photos 1  
GHB Photos 2  
GHB Photos 3

heaven's  
HONU WORLD IN HAWAII  
East FFS Photos  
Liu CHI STS 34 photos  
PDF 0  
PDF 00  
PDF 000 } GHB

38 Bones  
iles # 70-  
192  
2270 ML  
p=3  
NATION  
NTR photos  
p=11  
NOK photos  
p=4  
JCS photos  
p=19

TATTOO N=144  
UNLIAO N=93  
UNLIAO N=31  
5690 Photos N=8  
Midway Photos N=4  
5690-04  
5690-06  
5690-08  
5690-10 N=55  
5690-11 + -13  
5690 news N=19  
5690 (4809) N=190  
FLOW N=42  
218=08

PDF 609 }  
PDF french X  
LI N=36  
L2=34  
L3=32  
L4=48  
L5=16 L6 N=1  
L7=29 L12=8  
L10=1 L15=19  
L11=73 L17=N2

FIRST LIFE - Bells

BASH Photos N=120  
FFS SATRACKS N=14  
ANATHULU Photos N=43  
HONANUA Photos N=109  
PUNALUU Photos N=17  
KIHOLO Photos N=43  
TAHITI Photos N=36  
NECK N=5

Honokowai Photos N=6  
Laniakea Photos N=16  
MOC Photos N=19  
PNRA 2011 photos N=10  
Thail Photos PDF 37  
Laniakea PDF N=0  
Singapore Photos  
ANATHULU  
Heron Photos N=63

Cayman Photos N=5  
PDF 30"



PDF N2  
\* GATES CLOSED (continued)

- 3/4/14 pdf 31 N=144
- pdf 32 N=44
- pdf 33 N=108
- pdf 34 N=81

pdf 35 = N=59

GATES CLOSED  
ghost month

pdf 36 = N=47

PLAIN "pdf" N=37

Wednesday 3/5/2014

Sealife Park PDF N=12

3/6/14

~~Laniates PDF N=57~~ First life  
~~Cooker's special N=12~~

Accomplishments N=72

Council Reports N=42

Farming N=15

Headstart N=159

PIT N=151

GATES  
CLOSED

Symposium N=10

TO P. 80

N=46  
N=11

Mototool N=35

PDF 29 N=110

PDF 30 N=127



ghosi

Gates Closed,

PDF 2

PDF 3 N=64

PDF 4 N=46 Chalou pka

PDF 5 N=49 Agunwa + MTSQ Bjornell

PDF 8 N=46 Zug

PDF 9 N=33

PDF 10 N=21 Sritchard

PDF 11 N=26

PDF 12 N=88 B Journal / witzeel

PDF 13 N=57 Mortimer LU

PDF 14 N=53 Seminaft

PDF 15 N=98 Carr

PDF 16 N=73

PDF 18 N=39 Arttue

PDF 19 N=97 Bowen LU

PDF 20 N=99 Work

PDF 21 N=125 Wood & Ayman Hargrave

PDF 22 N=84

PDF 23 N=105 Bennett

PDF 24 N=105

PDF 25 N=106

PDF 26 N=116

PDF 28 N=68

PDF 29 N=113

PDF 30 N=127

GATES CLOSED

K3

K7

Vertical text on the left margin: 21, 22, 23, 24, 25, 26, 27, 28, 29, 30, 31, 32, 33, 34, 35, 36, 37, 38, 39, 40, 41, 42, 43, 44, 45, 46, 47, 48, 49, 50, 51, 52, 53, 54, 55, 56, 57, 58, 59, 60, 61, 62, 63, 64, 65, 66, 67, 68, 69, 70, 71, 72, 73, 74, 75, 76, 77, 78, 79, 80, 81, 82, 83, 84, 85, 86, 87, 88, 89, 90, 91, 92, 93, 94, 95, 96, 97, 98, 99, 100



21 EARLY BIRD  
PHOTOGRAPHY  
5/21/14

Meet Discussion  
MT

- 1) Stranding
- 2) Scuba - S. Smith
- 3) Walk watch Ford
- 4) PS Trans
- 5) PP WAIAU
- 6) Sinokel P+R + PP

ROBERT

BROCK  
TATTOO

V727  
THAILAND = 64  
Viet = 48  
Softshell = 33  
ROSE = 75

ALL George. Bal 25  
@ NOAA.GOV

HIWASAT = 21  
KAWAALO A =

13) DeLongline N=71  
CIE N=212  
WebCam 00 = 66

PHOTOS 1 N=444  
HONYMAZU

HK HK2 HK3

HK5-67 HK6=215\*

NOHK

21) WebCam 01 = N=24

PHOTOS 2 N=63

WebCam 02 = N=18 (WebCam 12 N=39)  
WebCam 03 = N=82 (WebCam 13 N=17)  
WebCam 04 N=77 (WebCam 14 N=57)  
WebCam 05 N=111  
WebCam 06 N=135  
WebCam 07 N=53  
WebCam 08 N=34  
WebCam 09 N=39  
WebCam 10 N=24  
WebCam 11 N=93  
webcam 12 open

" 3 N=31  
" 4 N=88  
" 5 N=50  
" 6 N=52  
" 7 N=54  
" 8 N=72  
" 9 N=40  
" 10 N=21  
" 11 N=44  
" 12 N=43  
" 13 N=240  
" 14 N=118  
" 15 N=105  
" 16 N=31  
" 17 N=146  
" 18 N=41  
" 19 N=17

POINTS N=6

China Airlines

JMAZU

UN N=196 BARNACLE photos  
UN2 N=209 Heron photos  
KONG N=201 HONOKOWAI photos N=6  
N=97 KAHALA photos N=4  
N=49 TAIWAN N=221  
N=112 HK14 N=139  
N=115  
N=150

NOAA.GOV HK 8 N=  
SAFE = N=69  
MONKSEAL N=107

A111



3/3/14 ✓ # 4 3/4 3/5 2 AM 5/6/14  
★ 1545 AM OFF

HONOLEA <sup>K<sub>n</sub></sup> ~~TS~~ HONOLULU WORLD  
DAJIAN N=108

↓  
LIP  
Photos  
N=5

Livchu Photos  
MAZUPHOTOS  
MAZUSpecial

10/27  
20/12

L19 =  
22

PDF 6  
PDF 66

L20 =  
59

PDF Japan X  
PDF KIDS

BRock PDF

L24  
N=7

PDF Thesis  
Peng Hu Photos

L26 =  
5

HONG KONG PHOTOS  
HONG K PHOTOS 2

L27 =  
5

Taiwan Photos

N=94 HONOLEA

L28 =  
2

Japan Photos

N=64

L2  
Photos  
60

New Cal Photos  
TID Photos

N=23

N=40 TID N=68

Palm  
Photos  
N=18

Muroto SAT  
Kauai Photos

N=65

SLP  
SAT  
N=5

Kapoho Photos  
Attok Photos

N=20

N=121

N=14

NCL Photos  
Puako Photos

N=4

N=7

2d  
J=31

Samoa Photos  
BALAZS

N=6  
256 - end

NEERA N=8  
ALAN N=8

Photos  
N=8

YAP  
Track 57

Shuk  
Attok

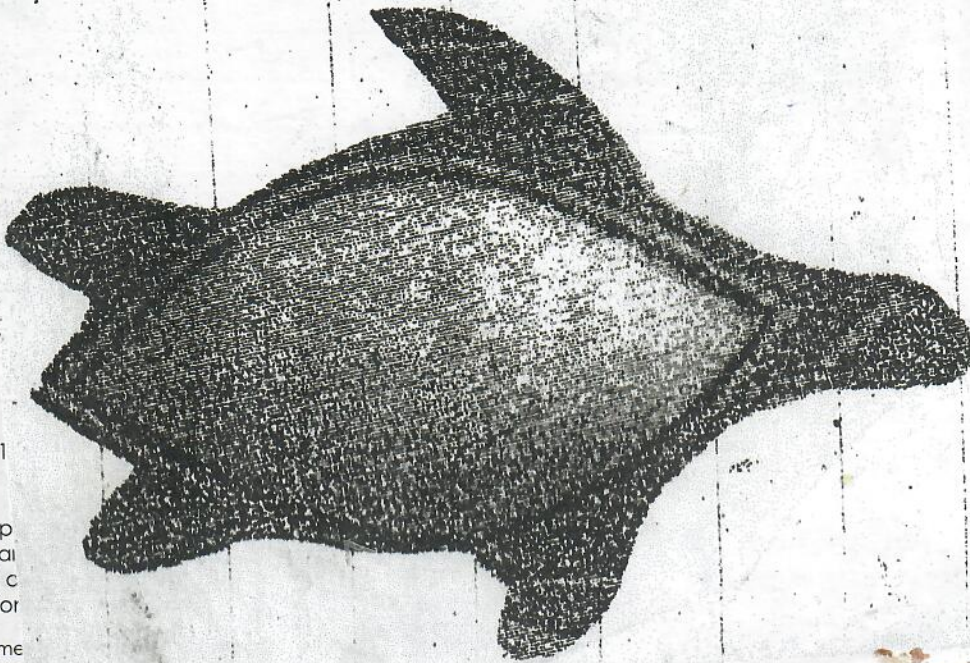
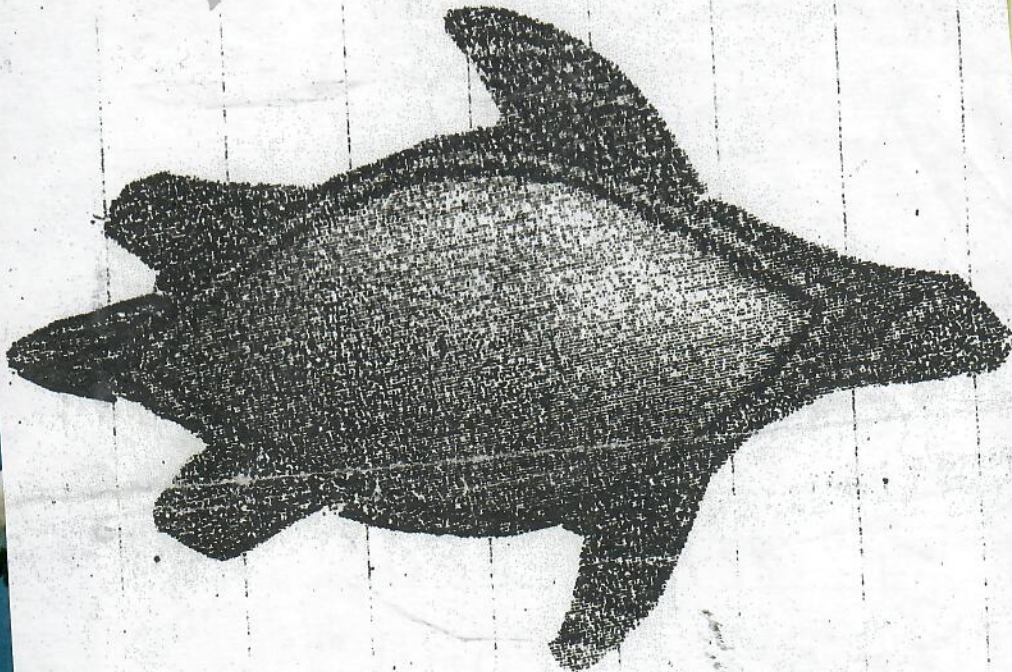
TAHITI  
SAT Track  
N=43

Taiwan SAT  
Track  
N=26

sooby,  
h its  
begin  
ut its  
balazs

50  
1,000





**Misc**

1 bu. p  
1 bai  
cu. feet c  
1 gallor

Circle diame  
Circle diame

Atomspheric p  
square inch at sea level

-13.5 cubic feet of air weighs 1 lb

Em is the square width of any  
given type size.

on each side

A section of land is 1 sq. mile.

A quarter section is 160 acres.

A township is 36 sq. miles.

LITERS	PINTS	QUARTS	GAL
1.000	2.113	1.057	0.264
0.473	1.000	0.500	0.125
0.946	2.000	1.000	0.250
3.785	8.000	4.000	1.000

Masked Booby,  
and with its  
thers only begin-  
w, tries out its  
orge H. Balazs

NDS  
20  
25  
00  
50

NDS  
50  
25  
000





10 reams = 1 bale

**Miscellaneous Measures**

- 12 units = 1 dozen
- 12 dozen = 1 gross
- 12 gross = 1 great gross
- 20 units = 1 score
- hand = 4 inches
- 1 fathom = 6 feet
- 1 knot = 6076 feet
- 3 knots = 1 league
- 1 bu. potatoes = 60 lbs.
- 1 barrel flour = 196 lbs.
- cu. feet of water = 62.4 lbs.
- 1 gallon water = 8.33 lbs.
- Circle diameter x 3.1416 = circumference
- Circle diameter squared x 0.7854 = area
- Atmospheric pressure is 14.7 lbs. per square inch at sea level
- 13.5 cubic feet of air weighs 1 lb
- Em is the square width of any given type size.

20 pennyweights = 1 ounce  
12 ounces = 1 pound

**Table of Circular Measure**

- 60 seconds = 1 minute
- 60 minutes = 1 degree
- 360 degrees = 1 circumference

A degree of the earth's surface or a meridian = 69.16 miles.

**Table of Surface Measure**

- 144 sq. ins. = 1 sq. ft.
- 9 square feet = 1 square yd
- 30.25 sq. yds. = 1 sq. rod
- 160 sq. rods = 1 acre
- 640 acres = 1 sq. mile
- An acre measures 208.71 ft. on each side

A section of land is 1 sq. mile.

A quarter section is 160 acres.

A township is 36 sq. miles.

**KILOMETERS**

1.00  
1.609

*A young Masked Booby, still downy and with its flight feathers only beginning to show, tries out its wings. (George H. Balazs)*

**GRAMS OUNCES POUNDS**

1.00	0.035	0.0020
28.35	1.000	0.0625
453.59	16.000	1.0000
1,000.00	35.274	2.2050

**KILOGRAMS OUNCES POUNDS**

1.000	35.274	2.2050
0.028	1.000	0.0625
0.454	16.000	1.0000

**LITERS PINTS QUARTS GAL**

1.000	2.113	1.057	0.264
0.473	1.000	0.500	0.125
0.946	2.000	1.000	0.250
3.785	8.000	4.000	1.000



