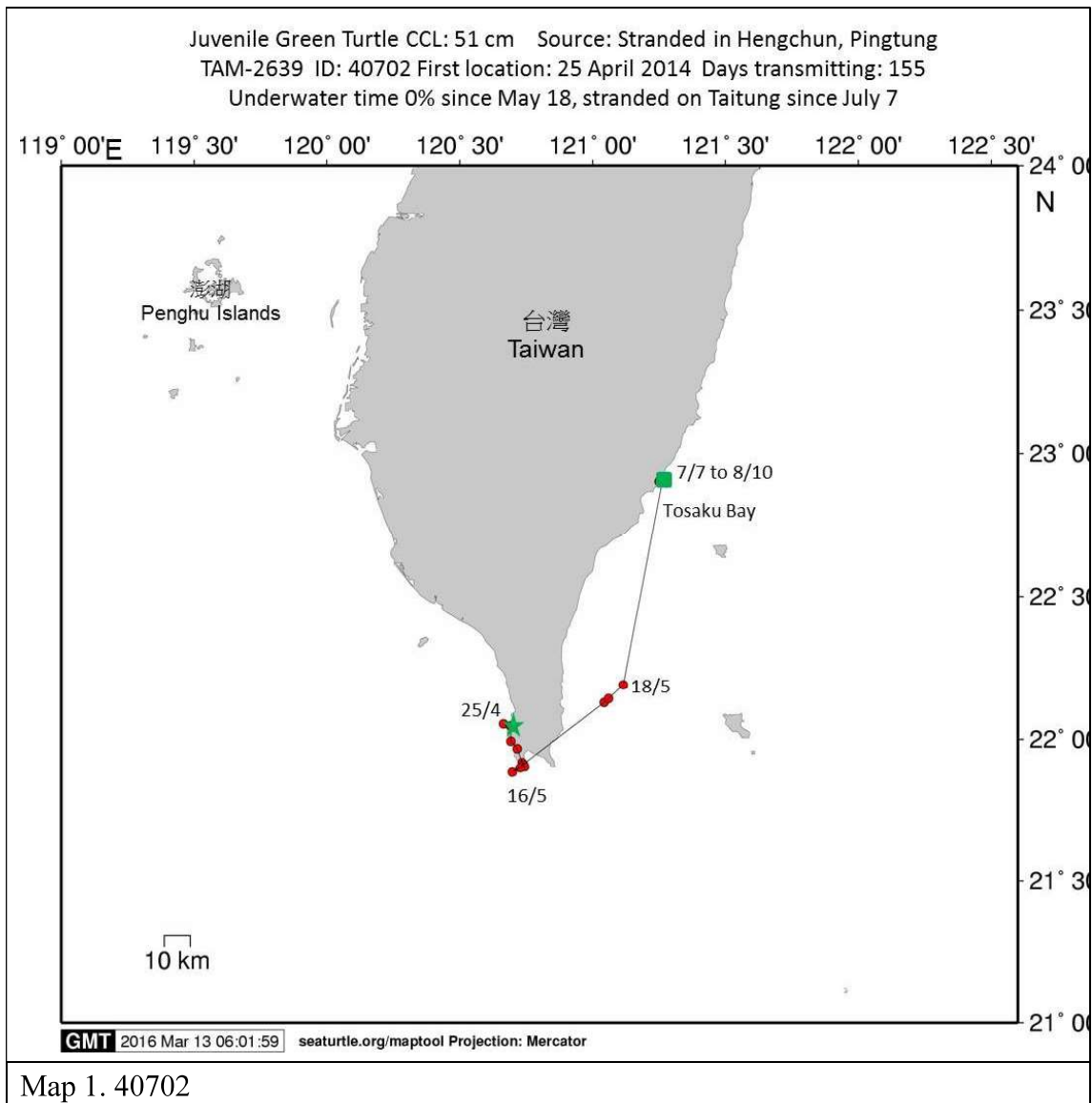
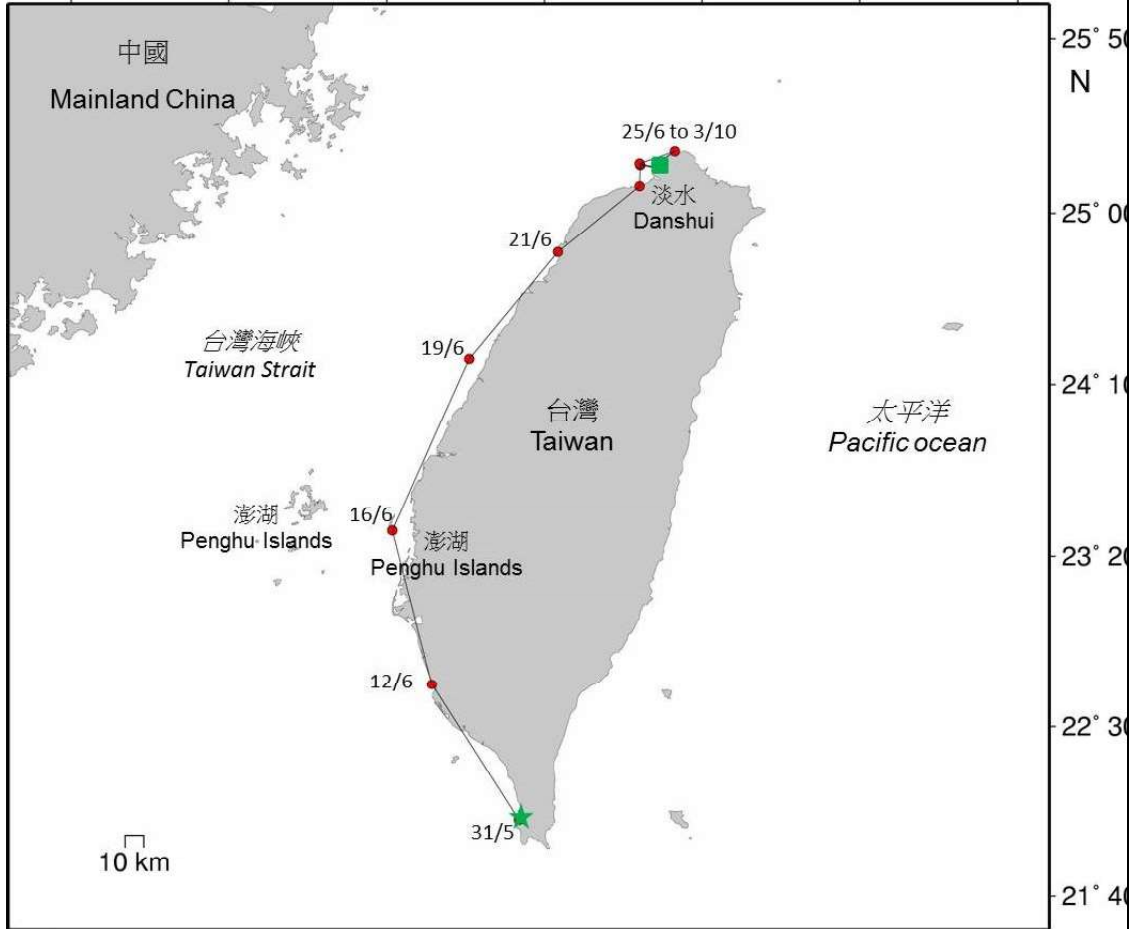


Figures A. Tracking maps of by-catch or stranded green turtles after rehabilitation. Star icon on the map denotes the release location and square icon the final location. The solid and dash lines linking the data points in the maps are for easy reference of the course direction only. They do not imply the exact pathway of the sea turtles. The inset map of each tracking map (if any) represents home range extents: simple hatch shade refers to Minimum Convex Polygon, Cross hatch shade KDE 50%, Grey solid line KDE 90%, Black solid line KDE 95%. (SEATURTLE.ORG Maptool. 2002. SEATURTLE.ORG, Inc. <http://www.seaturtle.org/maptool/> January 2017)



Juvenile Green Turtle CCL: 45 cm Source: Floating in the port at New Taipei City
TAM-2639 ID: 41788 First location: 31 May 2014 Days transmitting: 124

118° 20'E 119° 10' 120° 00' 120° 50' 121° 40' 122° 30' 123° 20'

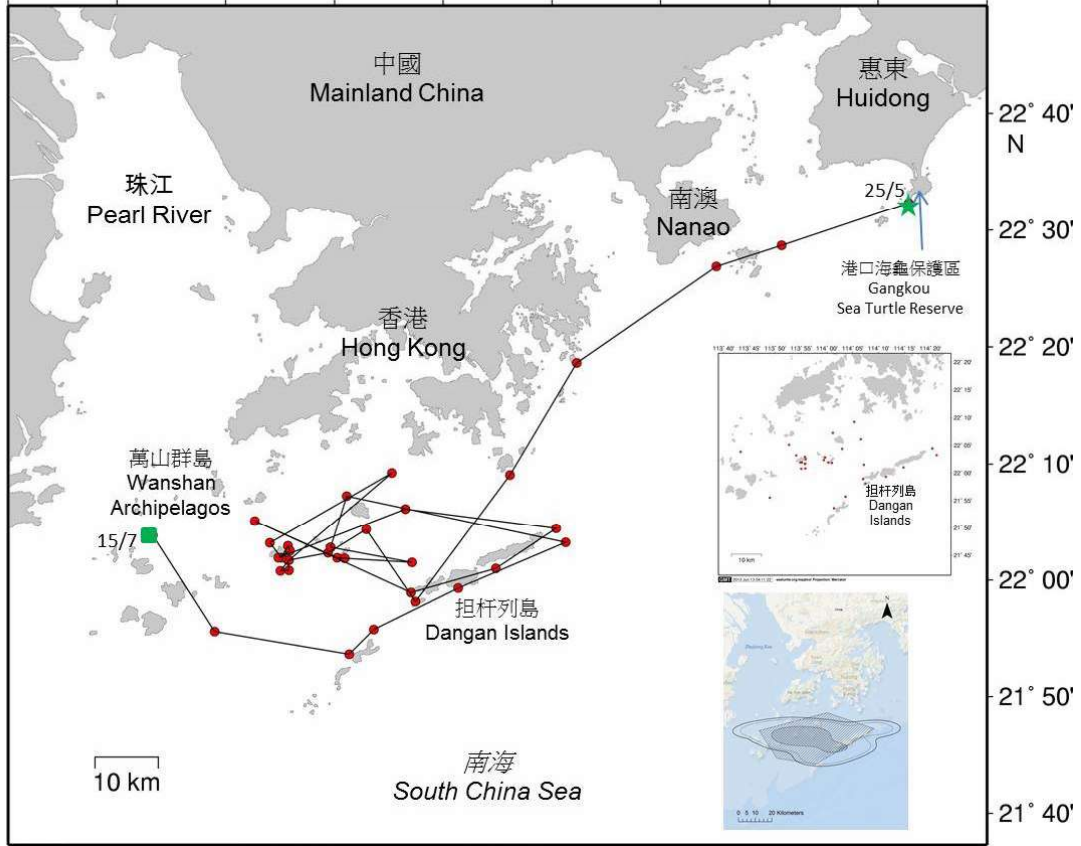


GMT 2016 Mar 13 06:22:12 seaturtle.org/maptool Projection: Mercator

Map 2. 41788

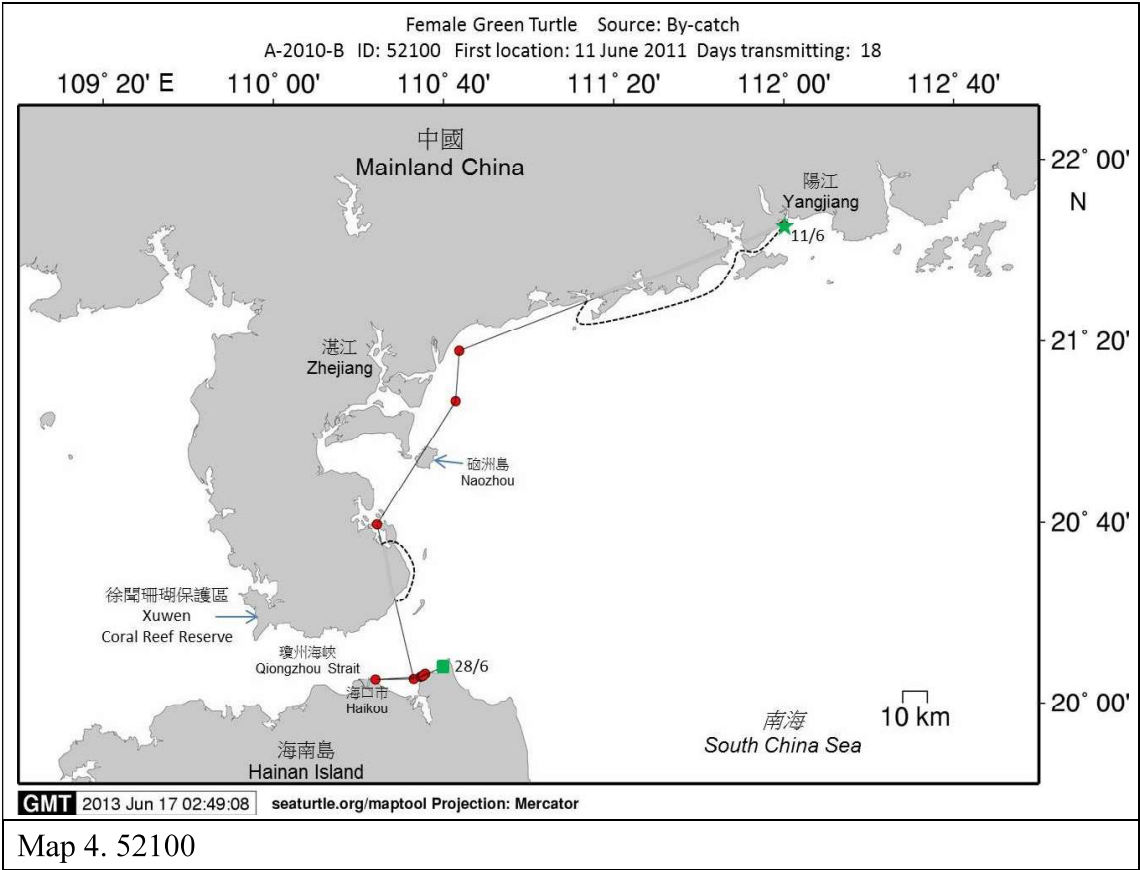
Female Green Turtle CCL: 80 cm Source: By-catch
A-2010-B ID: 52099 First location: 25 May 2007 Days transmitting: 55

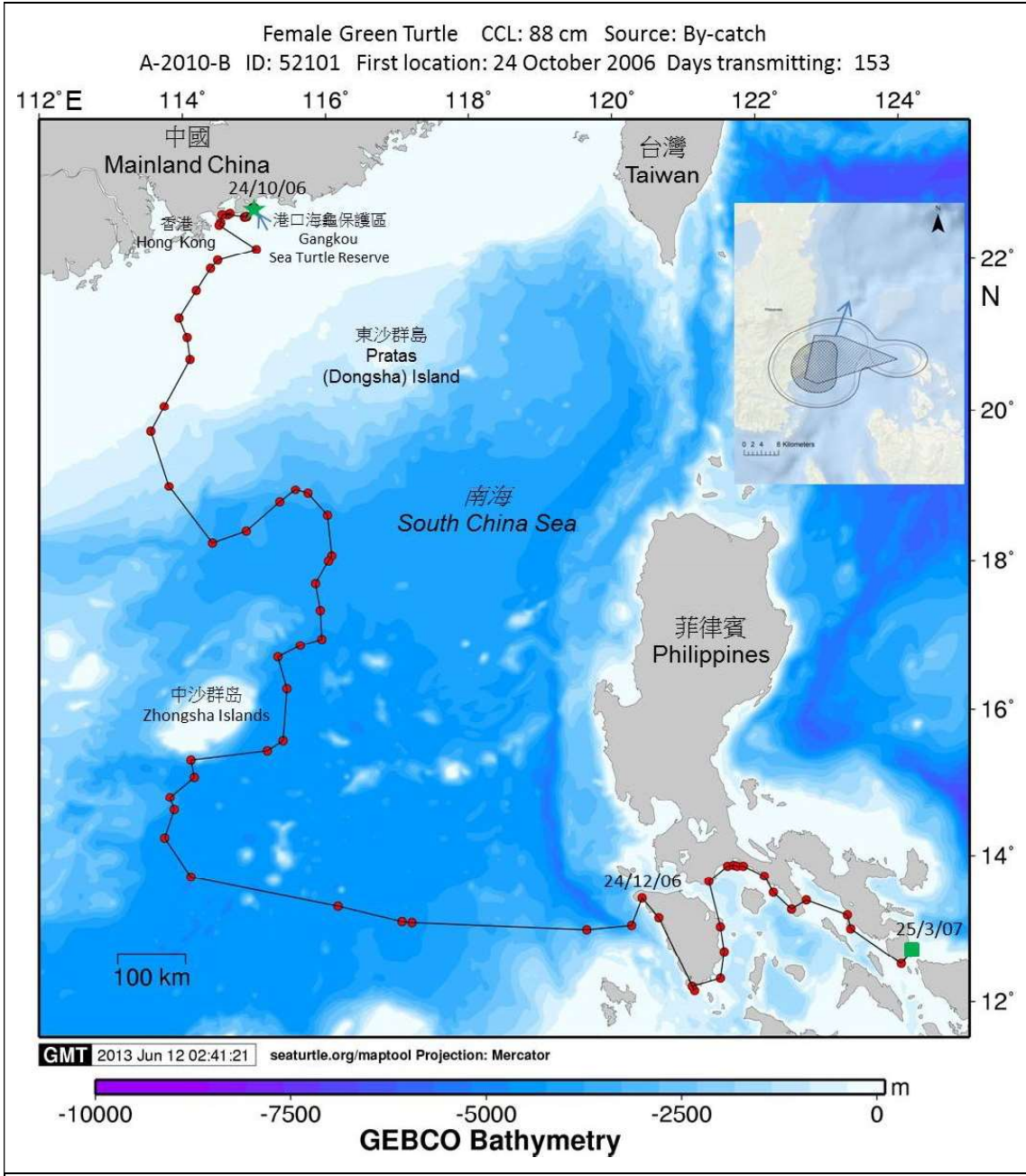
113° 30'E 113° 40' 113° 50' 114° 00' 114° 10' 114° 20' 114° 30' 114° 40' 114° 50' 115° 00'



GMT 2013 Jun 13 04:01:20 seaturtle.org/maptool Projection: Mercator

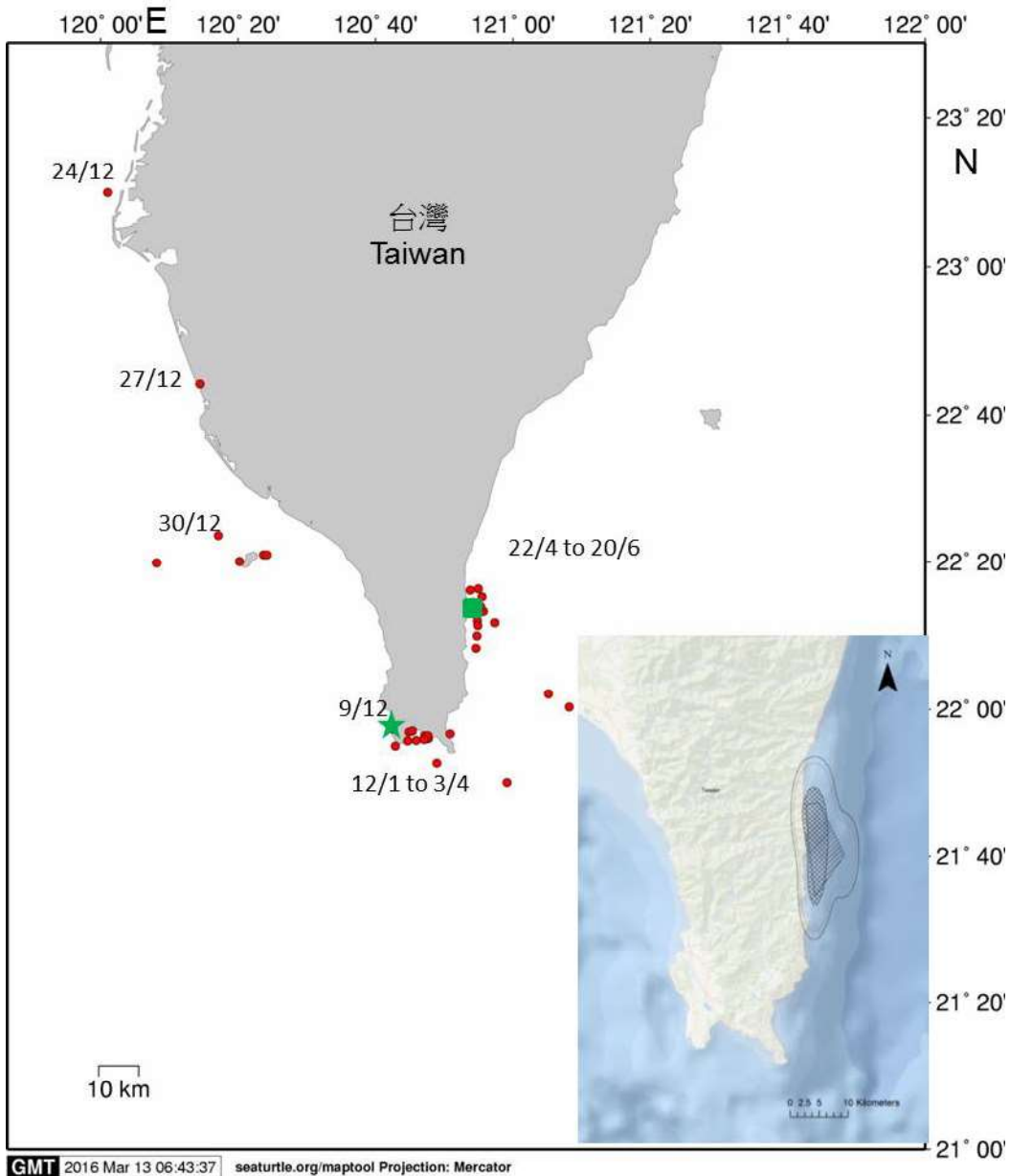
Map 3. 52099



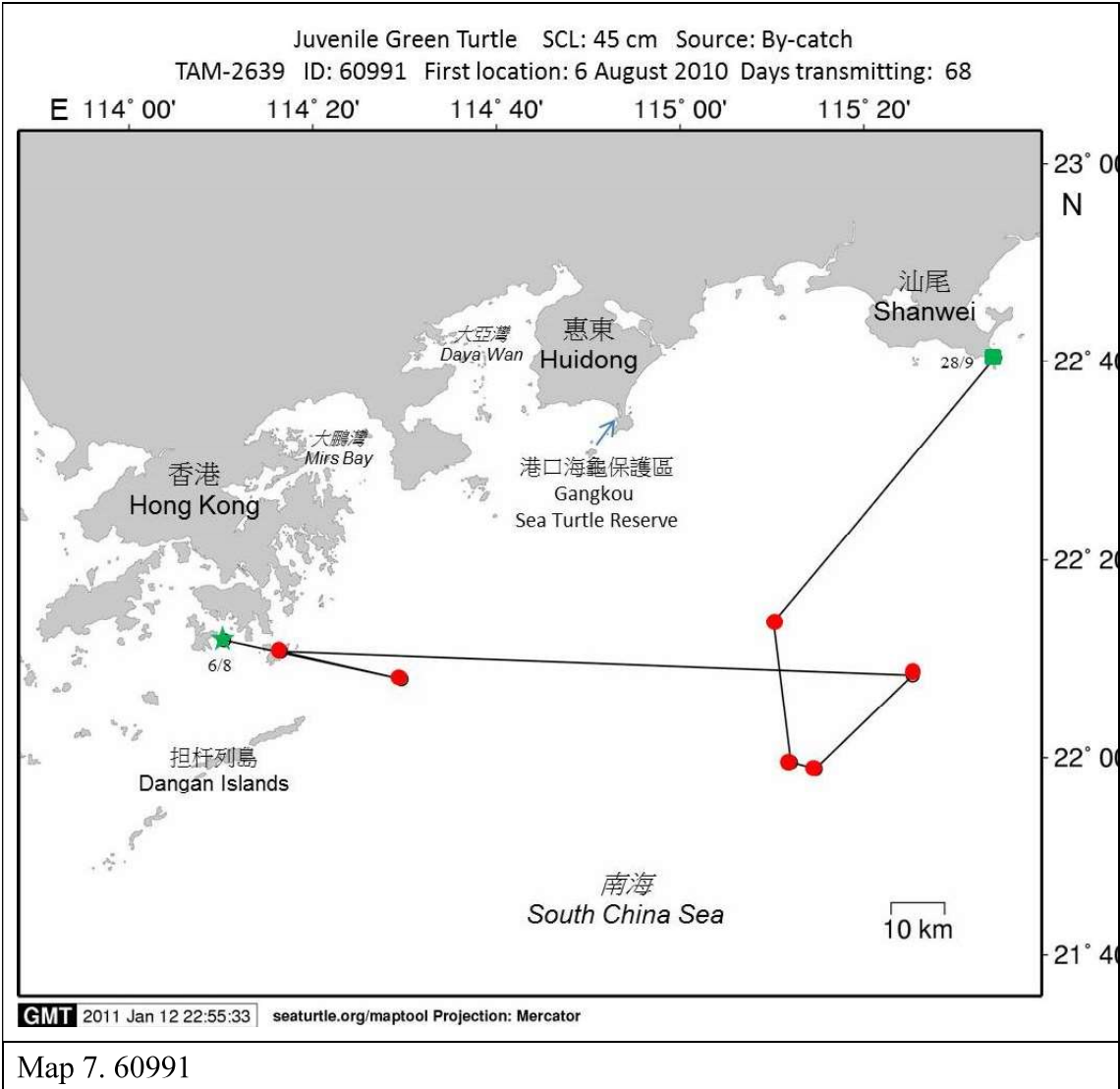


Map 5. 52101

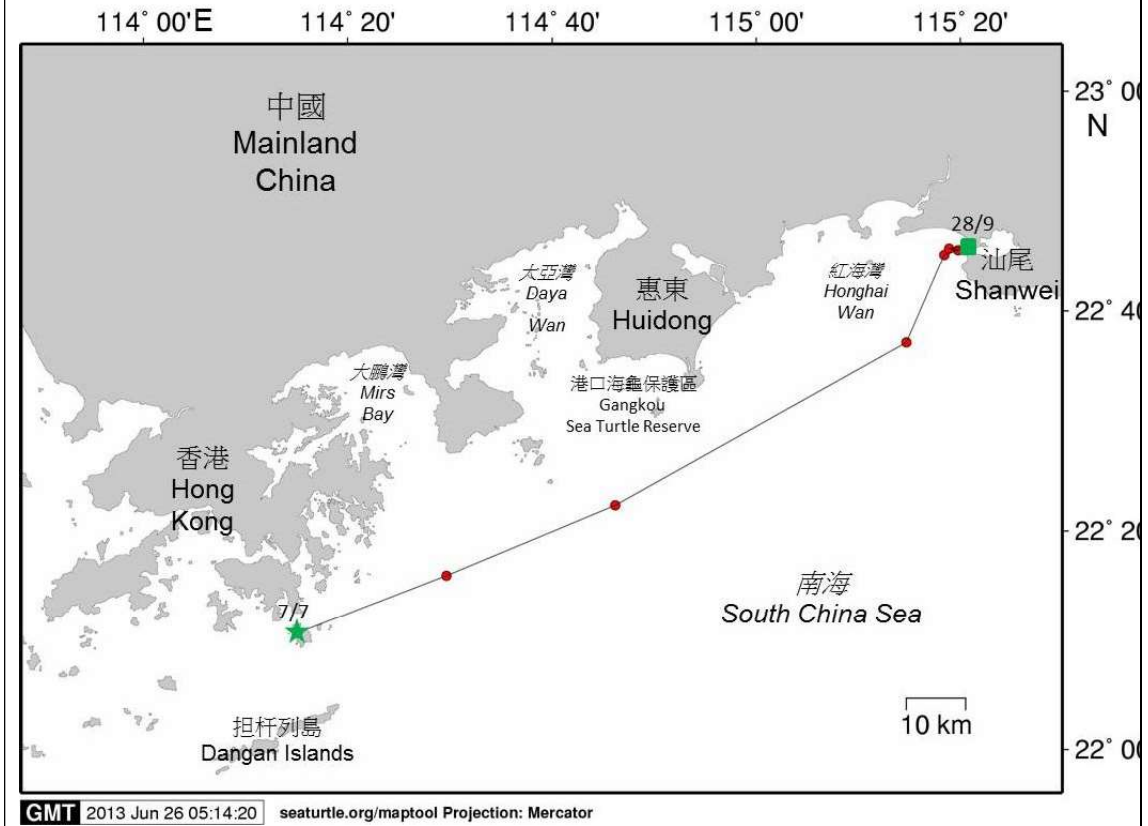
Sub-adult Green Turtle CCL: 80.6 cm Source: Stranded
TAM-2639 ID: 53748 First location: 9 December 2013 Days transmitting: 237



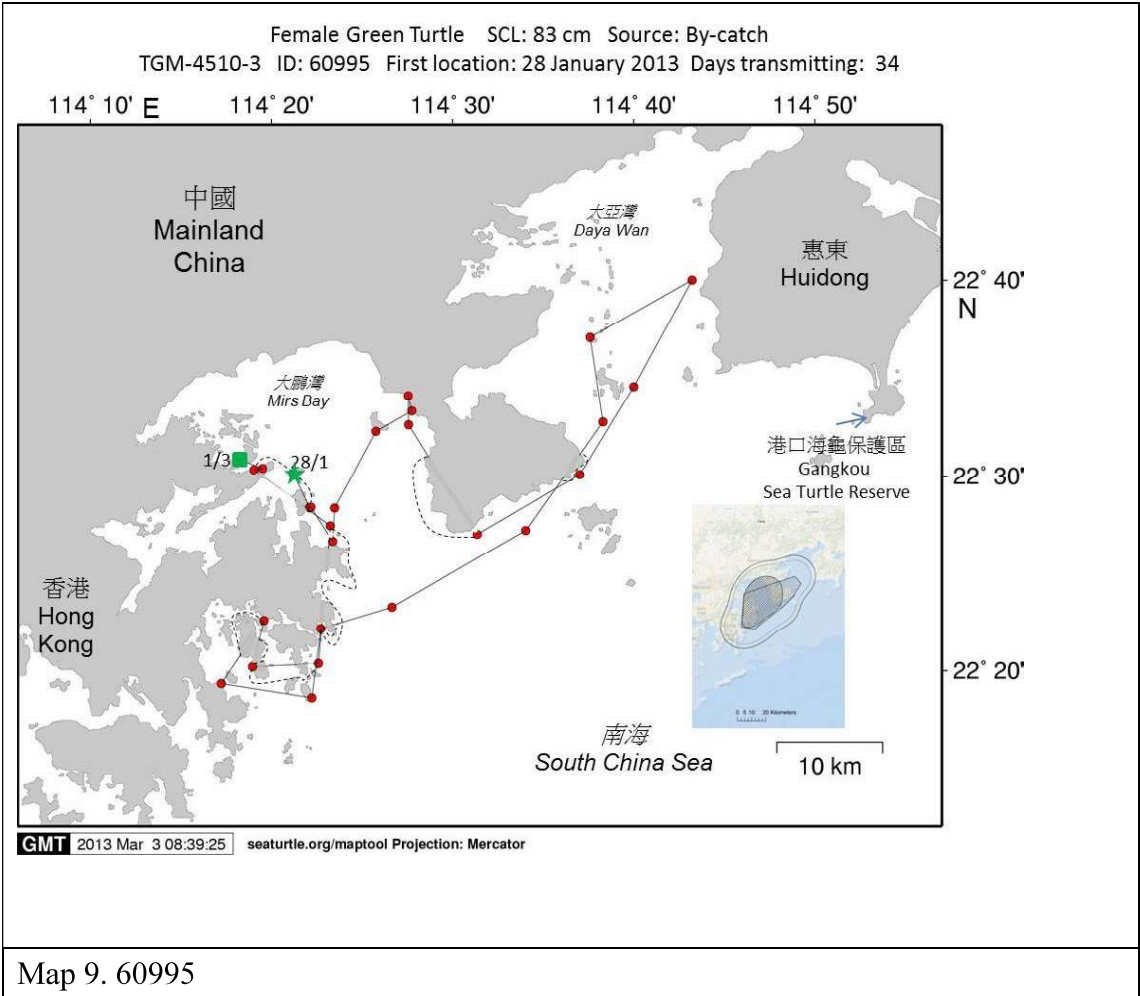
Map 6. 53748



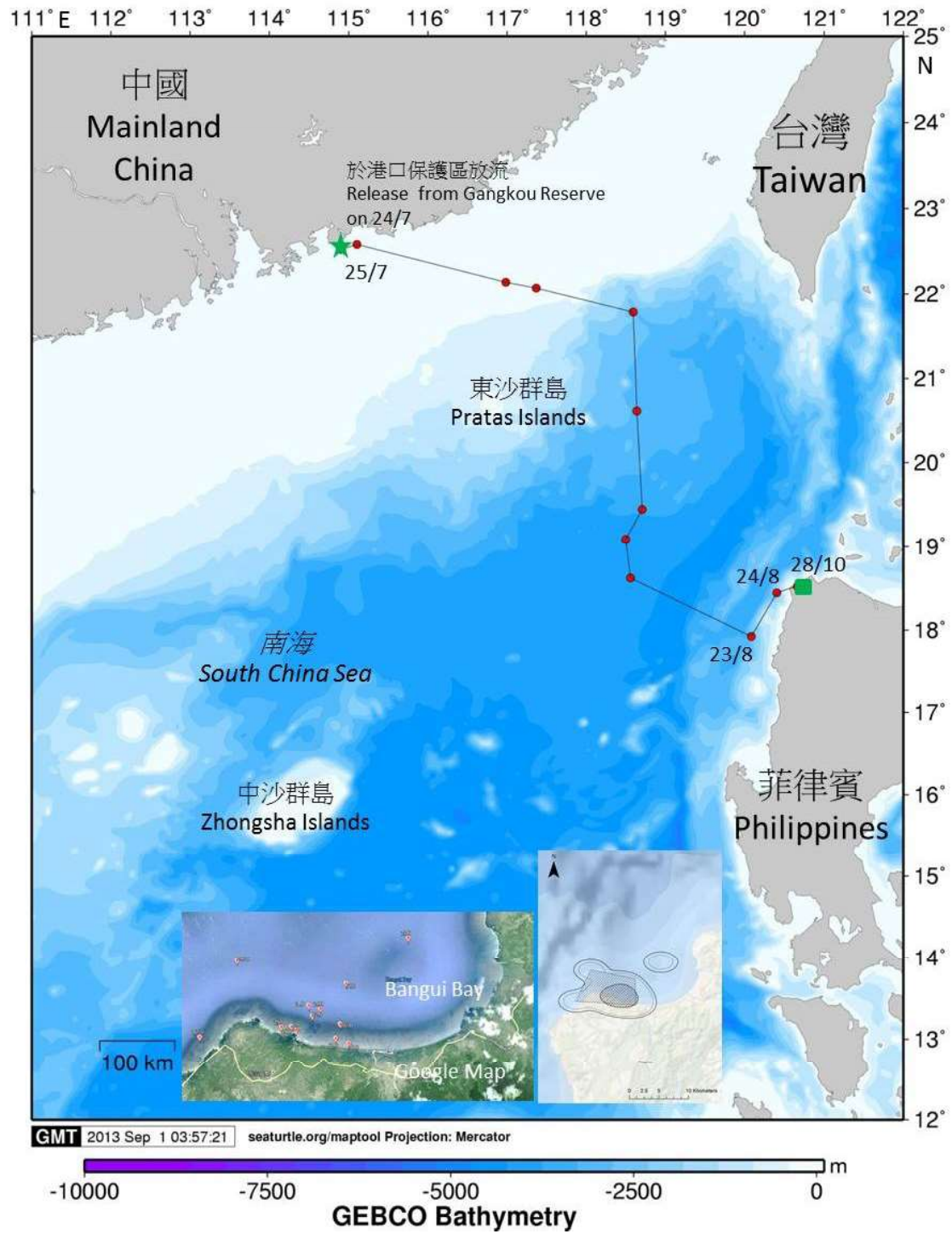
Female Green Turtle SCL: 83.9 cm Source: Stranded
TGM-4510 ID: 60992 First location: 7 July 2011 Days transmitting: 84



Map 8. 60992

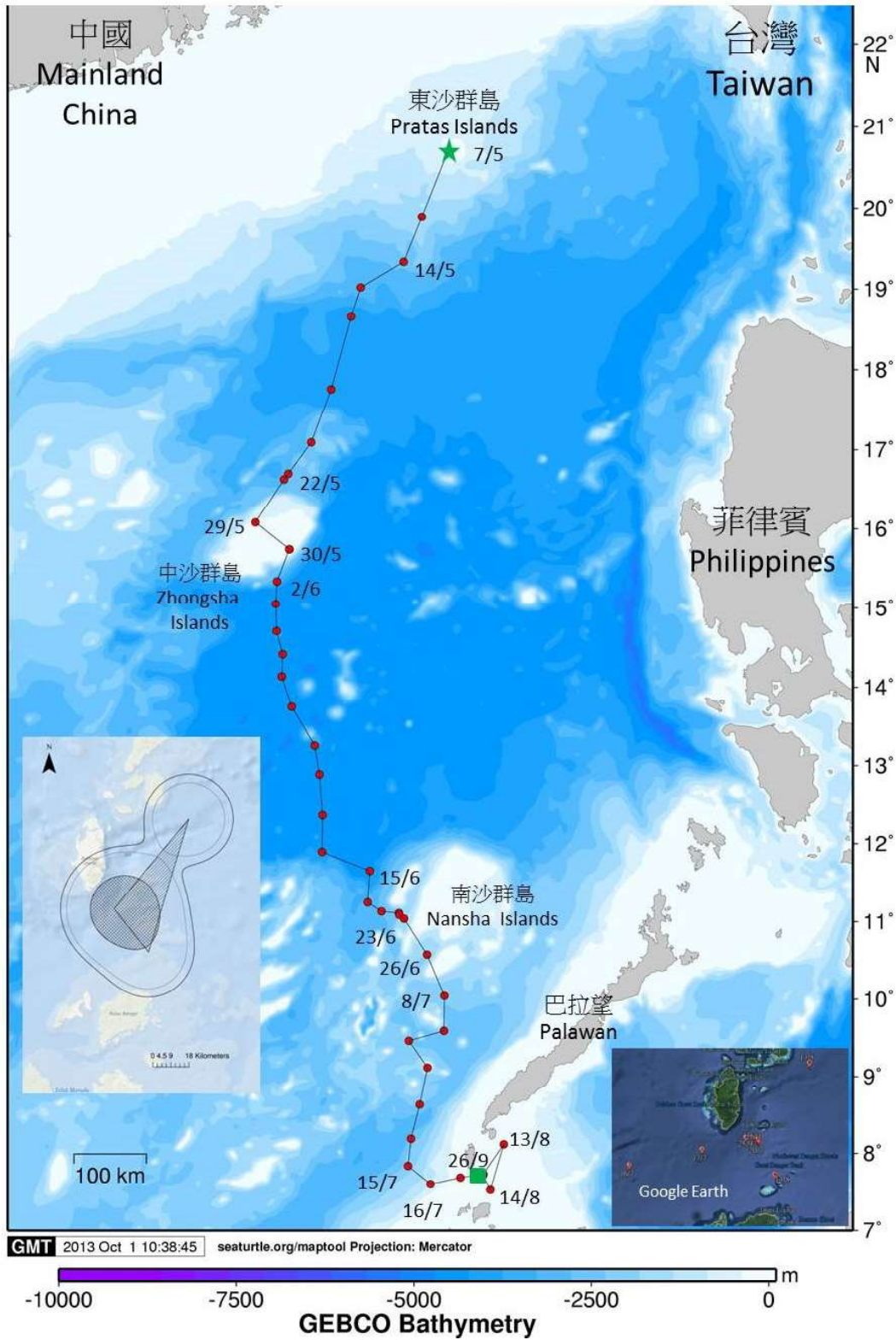


Female Green Turtle CCL: 93.5 cm Source: By-catch
TAM-2639 ID: 65417 First location: 24 July 2013 Days transmitting: 100



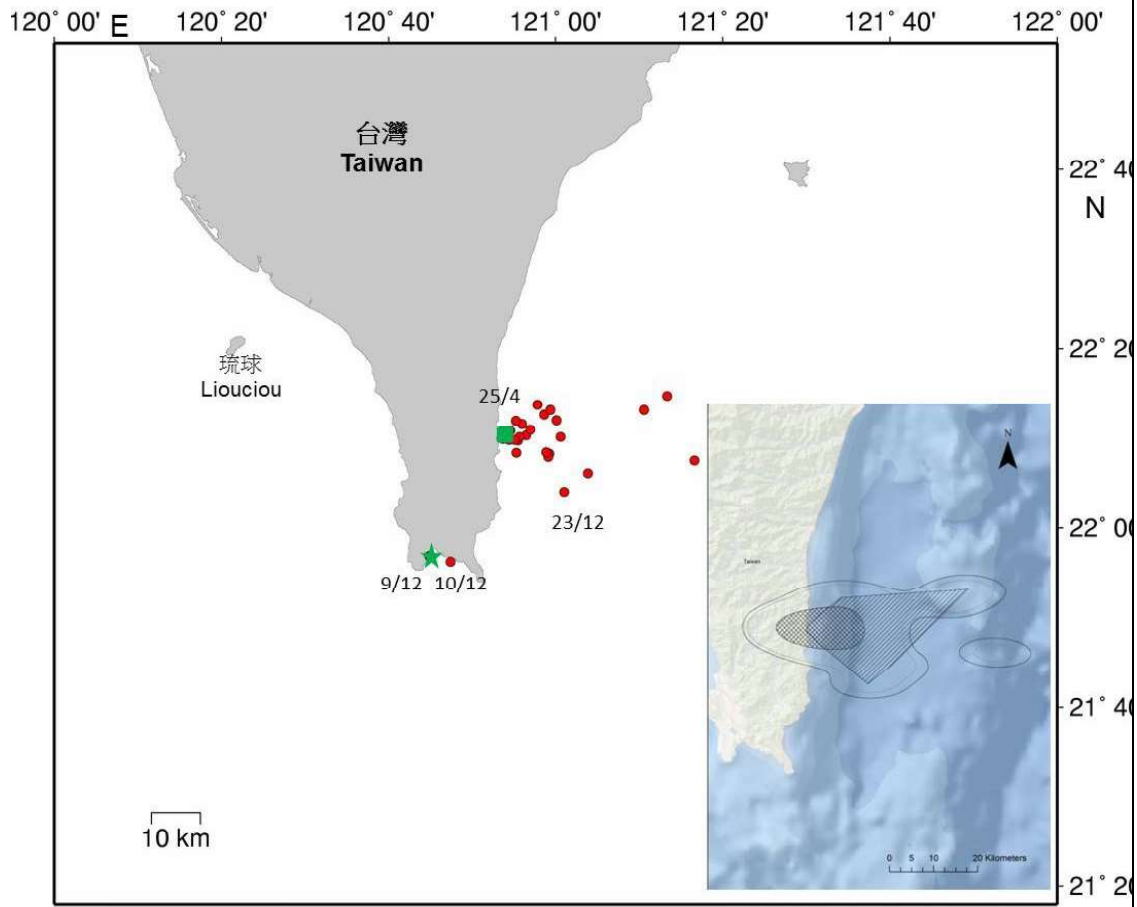
Map 10. 65417

Green Turtle SCL: 41 cm Source: Stranding
 TAM-2639 ID: 68329 First location: 13 May 2013 Days transmitting: 142



Map 11. 68329

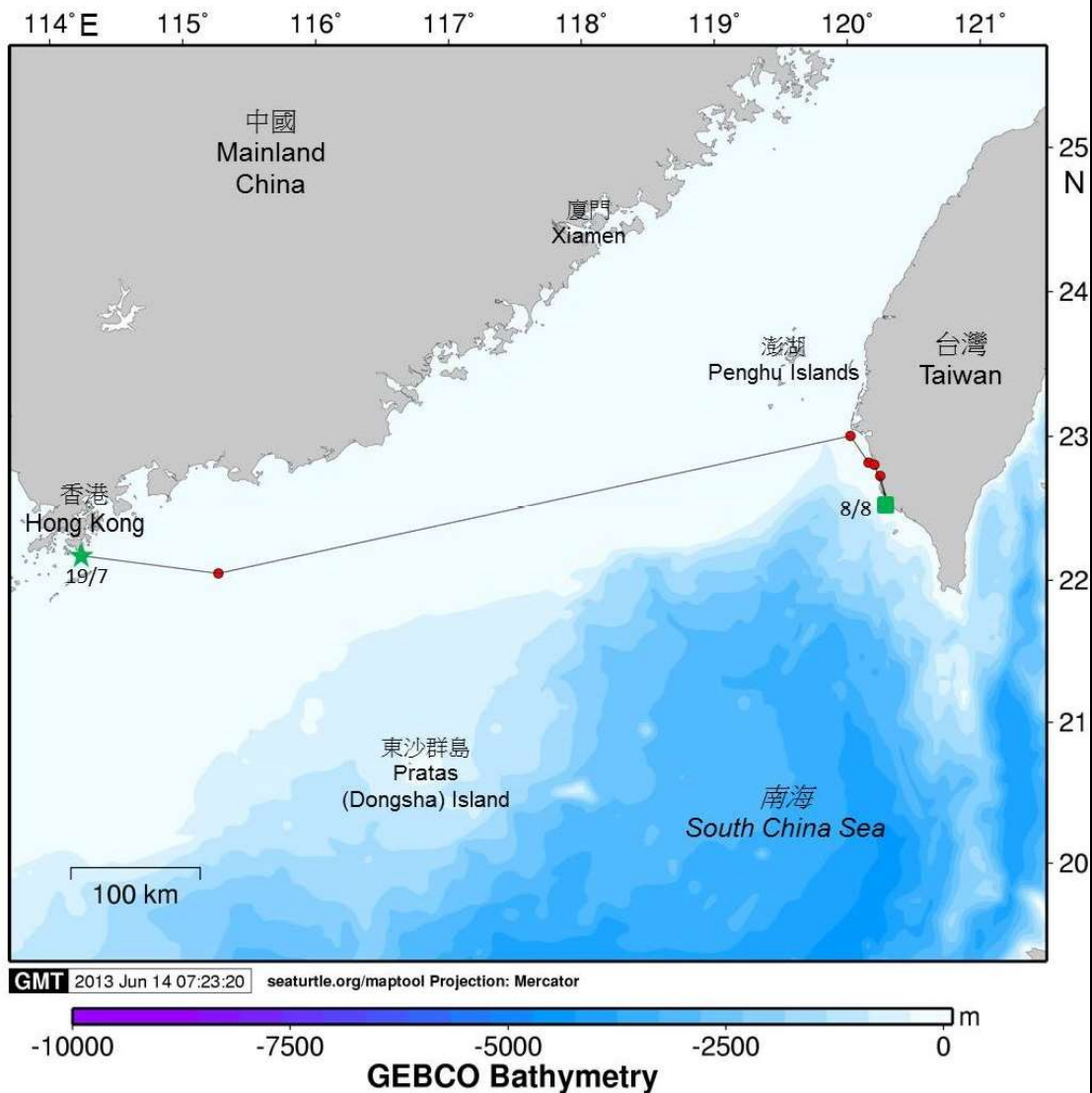
Juvenile Green Turtle CCL: 61 cm Source: Stranded in Manjhou, Pingtung
TAM-2639 ID: 71914 First location: 9 December 2013 Days transmitting: 147



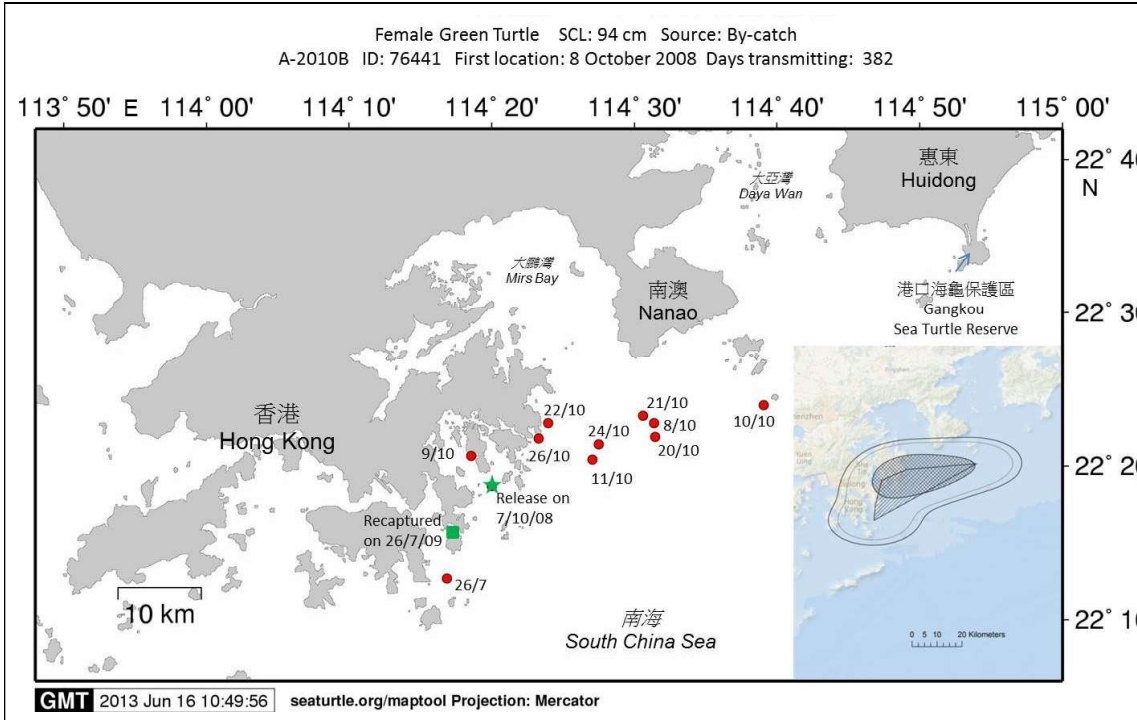
GMT 2016 Mar 13 08:55:18 seaturtle.org/maptool Projection: Mercator

Map 12. 71914

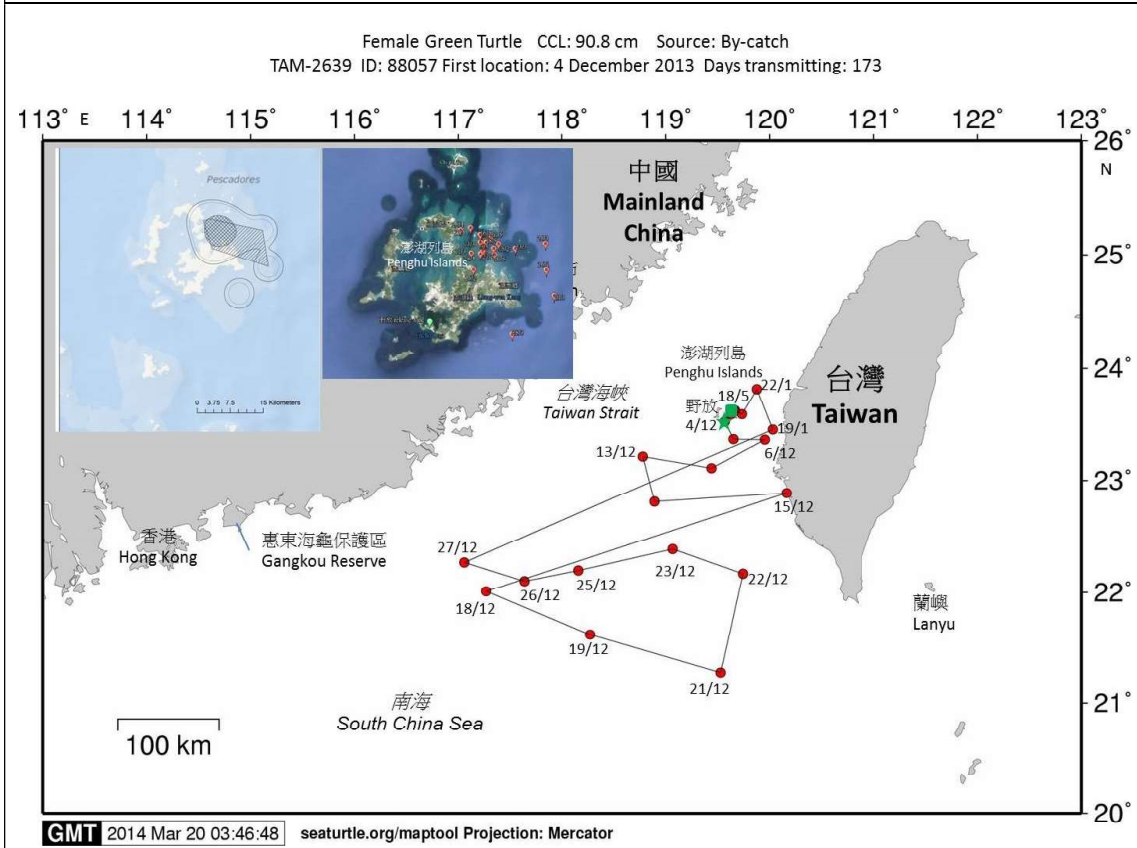
Juvenile Green Turtle SCL: 37 cm Source: By-catch in Wanshan Archipelago
A-118 ID: 76439 First location: 19 July 2008 Days transmitting: 22



Map 13. 76439



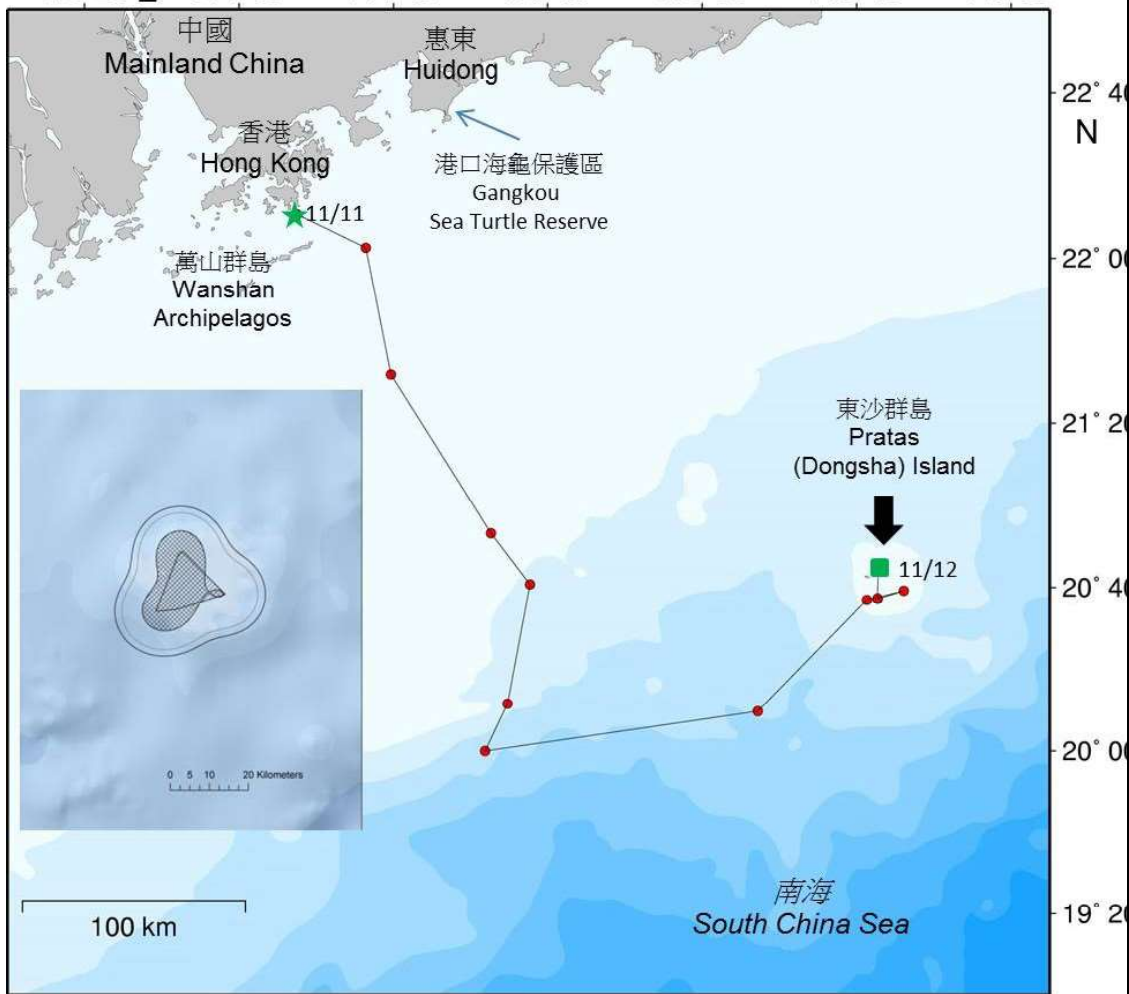
Map 14. 76441



Map 15. 88057

Female Green Turtle SCL: 95 cm Source: By-catch
TGM-4510 ID: 96513 First location: 11 November 2010 Days transmitting: 31

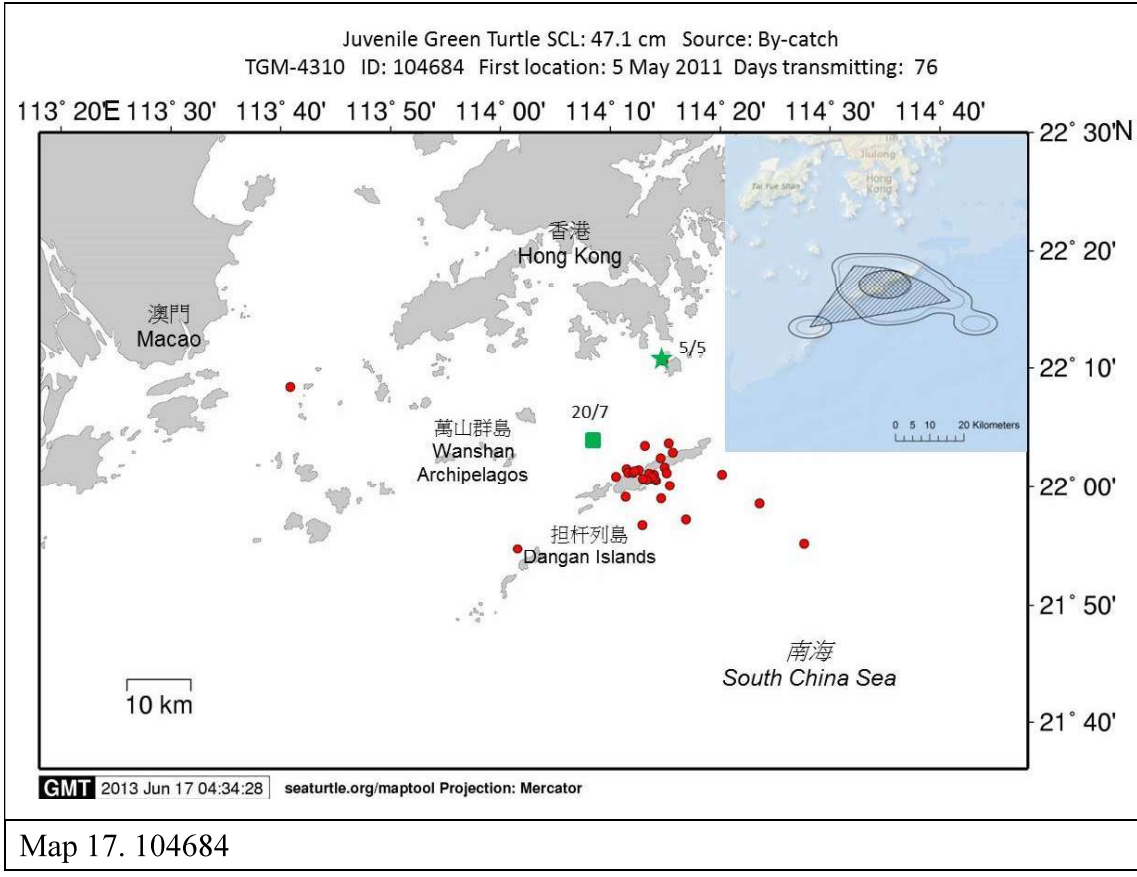
113° 20' E 114° 00' 114° 40' 115° 20' 116° 00' 116° 40' 117° 20'



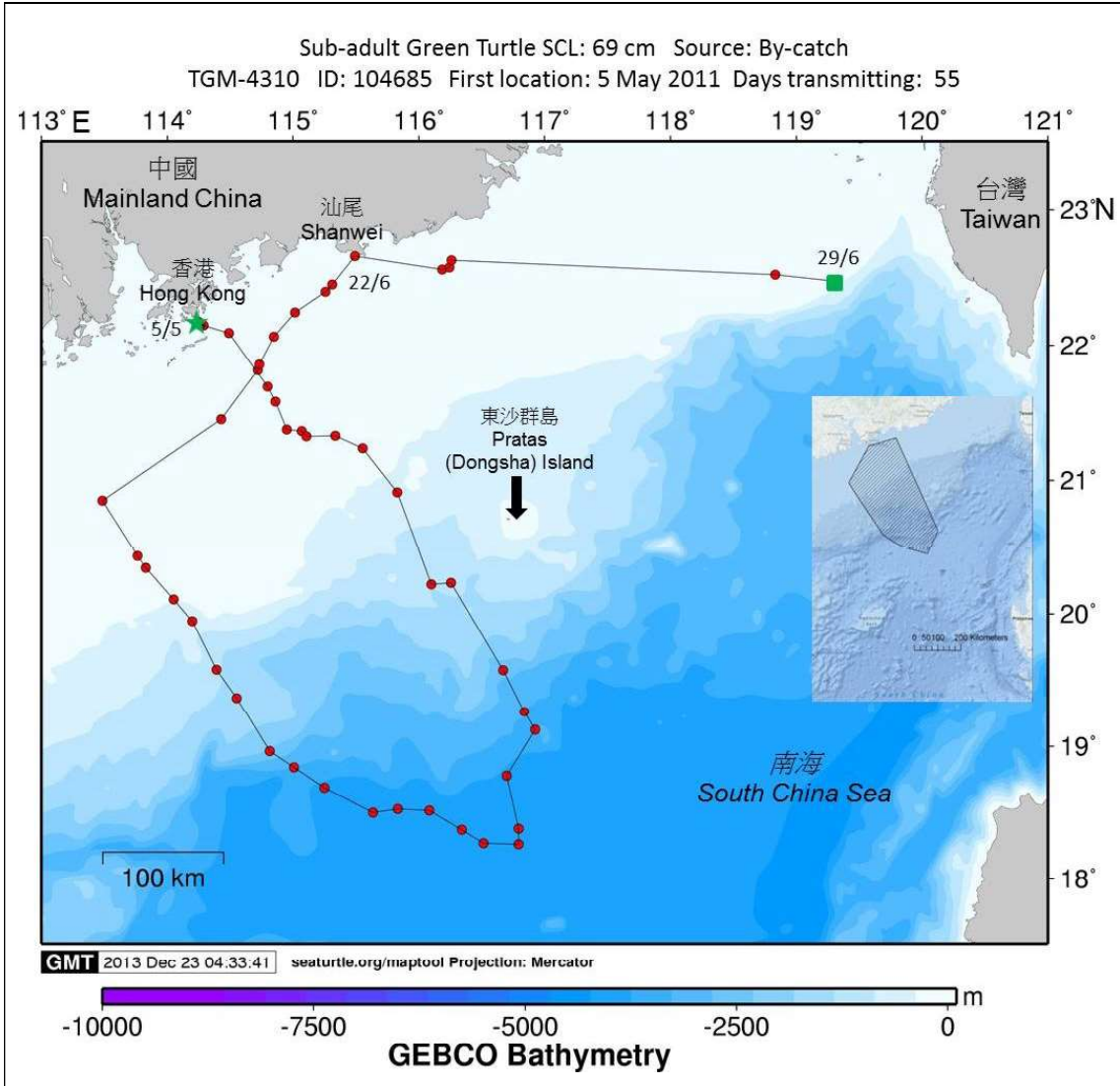
GMT 2013 Jun 17 03:54:20 seaturtle.org/maptool Projection: Mercator



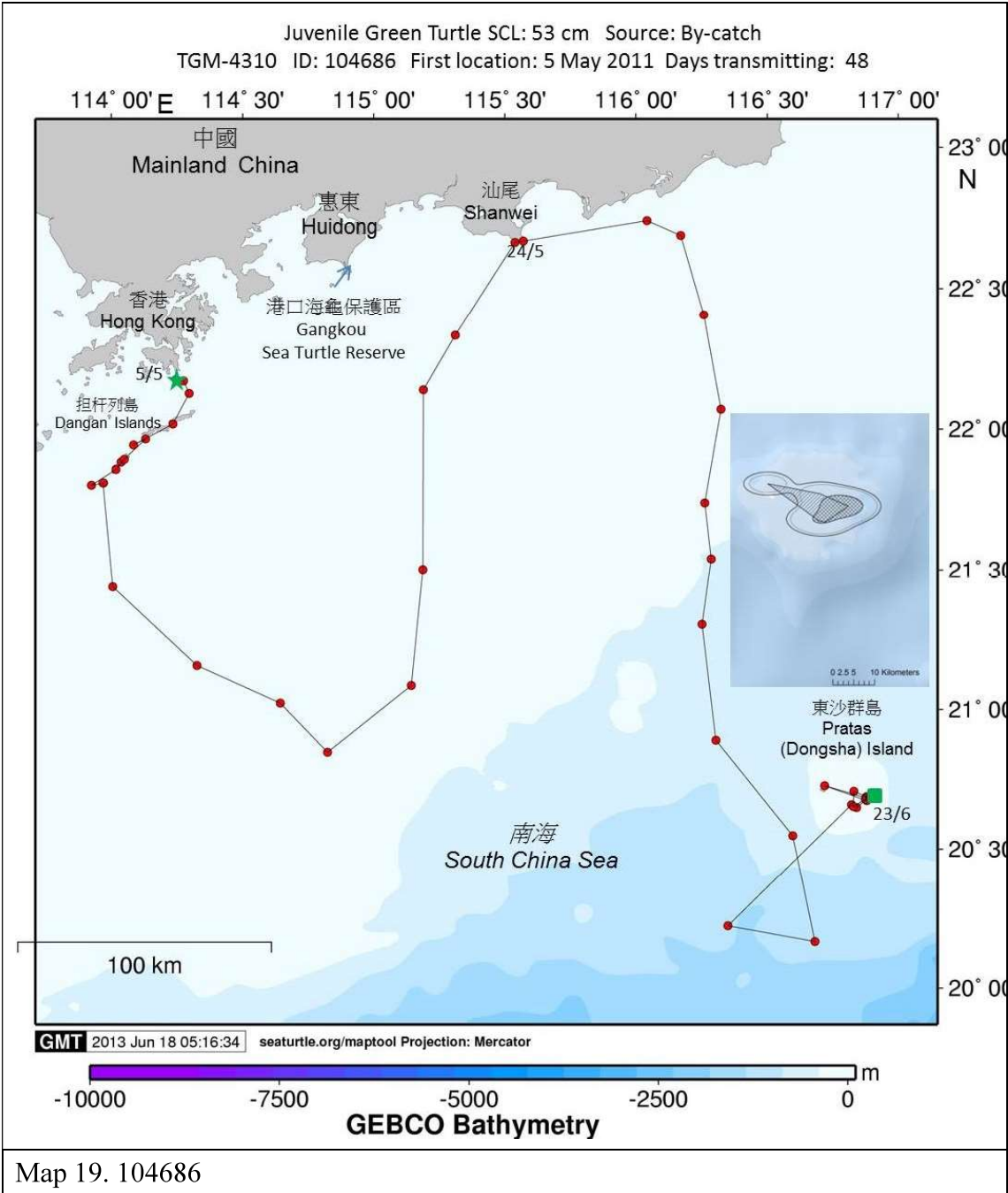
Map 16. 96513



Map 17. 104684

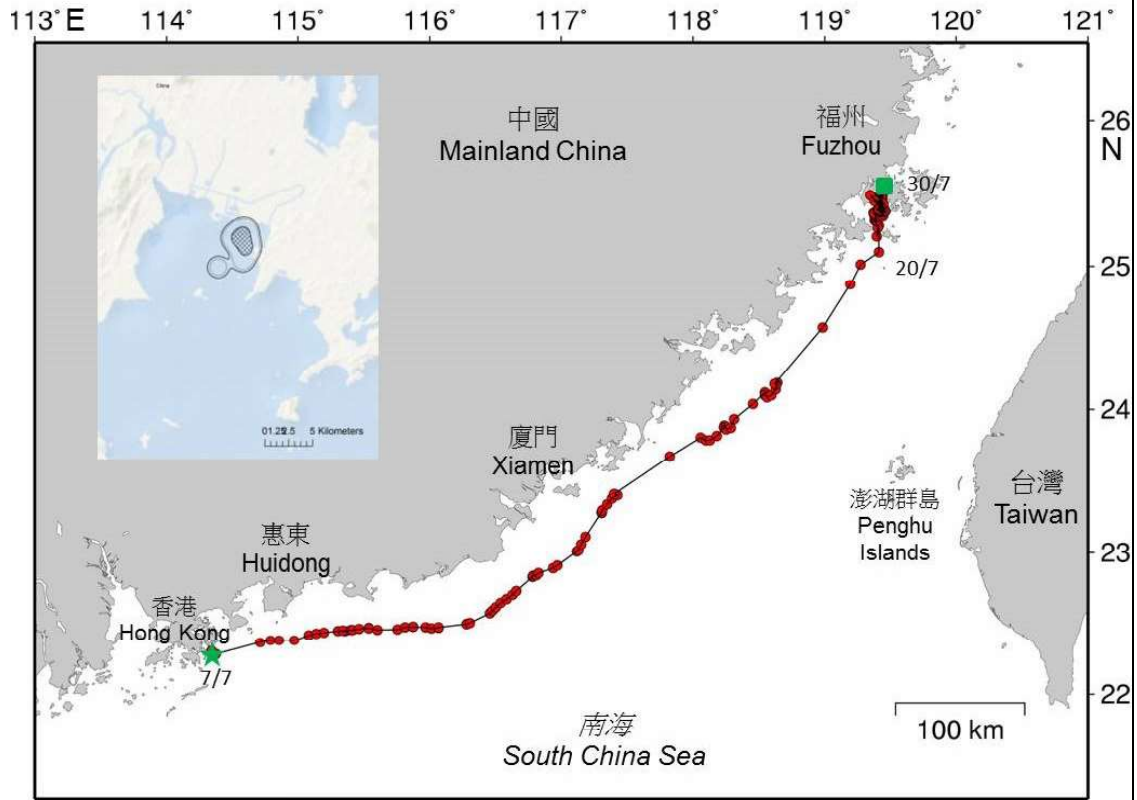


Map 18. 104685



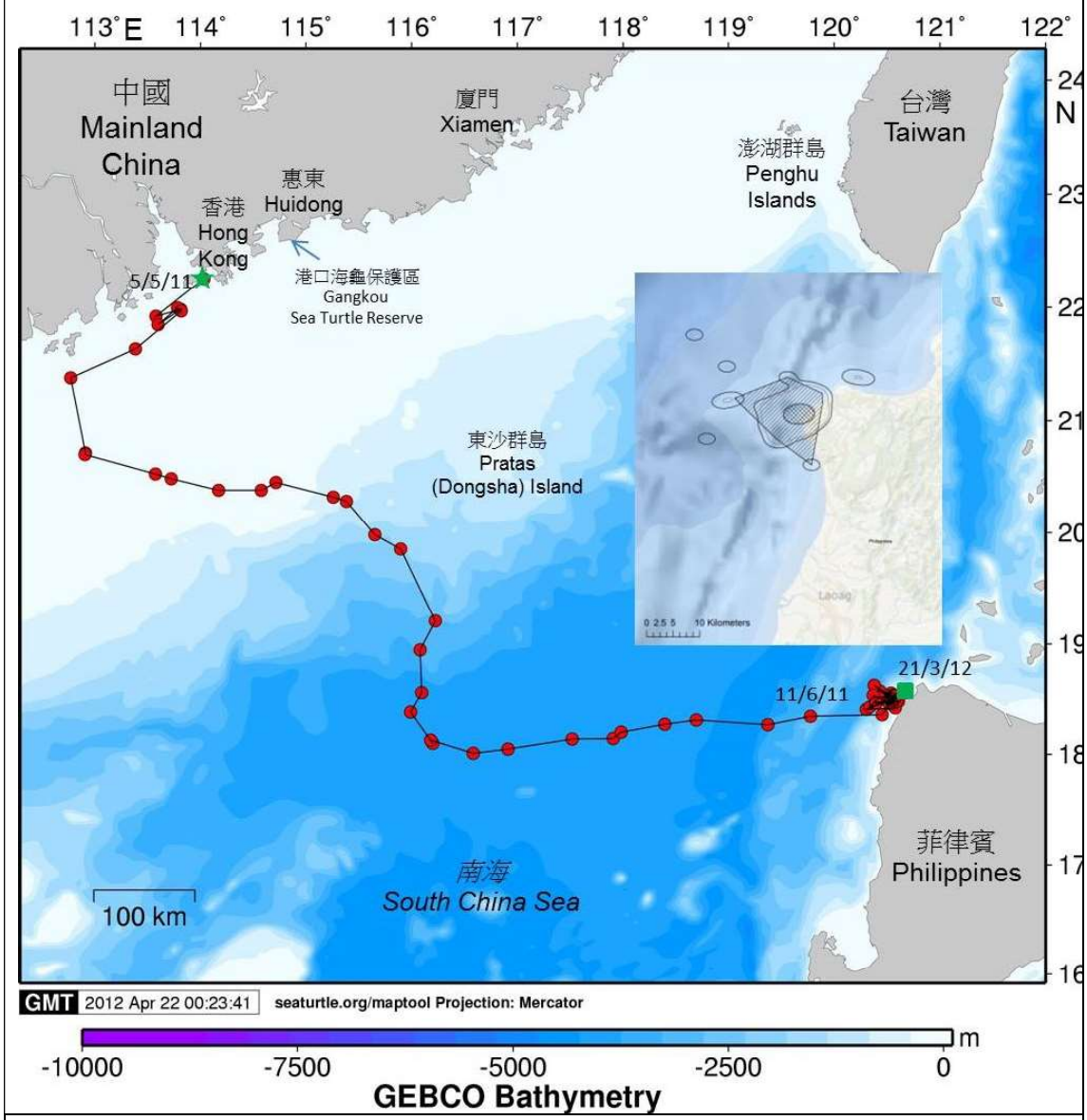
Map 19. 104686

Sub-adult Green Turtle SCL: 72.8 cm Source: Stranded
TGM-4310 ID: 104687 First location: 7 July 2011 Days transmitting: 24



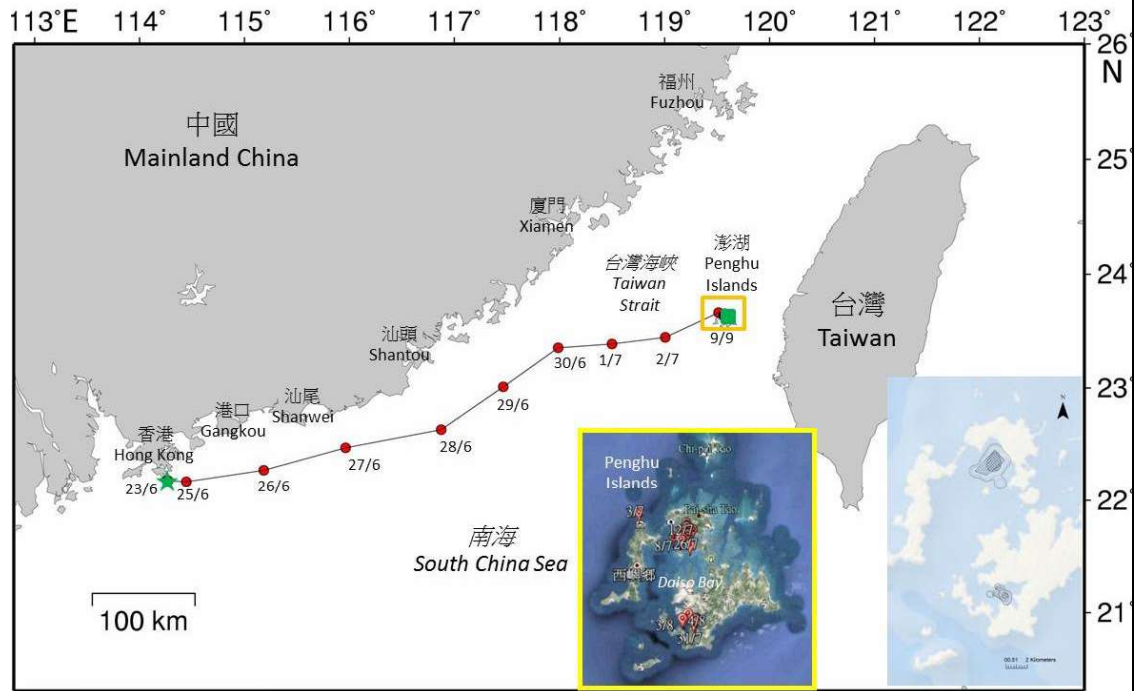
Map 20. 104687

Juvenile Green Turtle SCL: 44.1 cm Source: By-catch
TAM-2639 ID: 104713 First location: 5 May 2011 Days transmitting: 322



Map 21. 104713

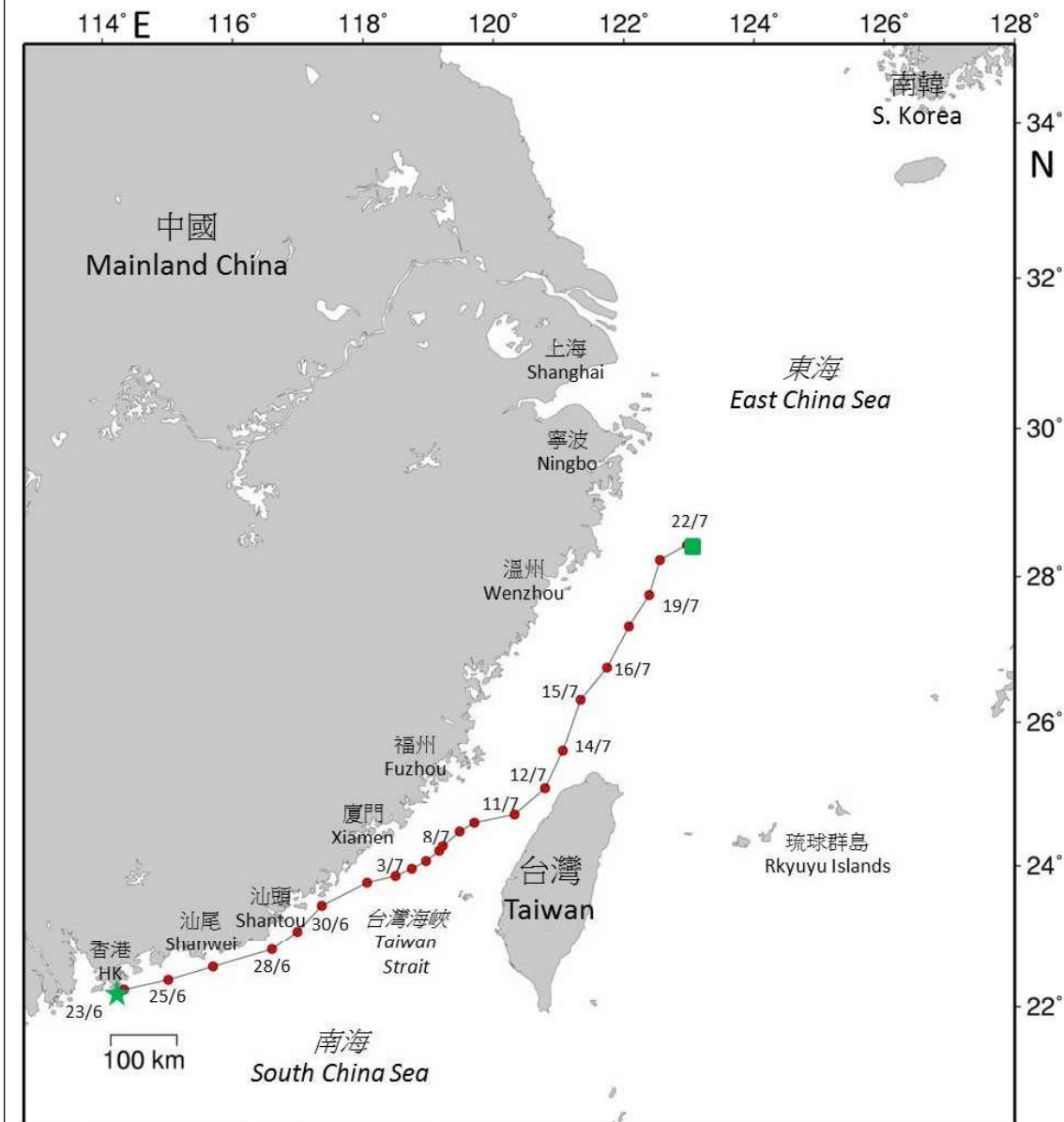
Maturing Male Green Turtle CCL: 79cm Source: Hatching from Sham Wan in 2001, in captivity
TGM-4510 ID: 129723 First location: 23 June 2014 Days transmitting: 78



GMT 2014 Jul 22 22:30:35 seaturtle.org/maptool Projection: Mercator

Map 22. 129723

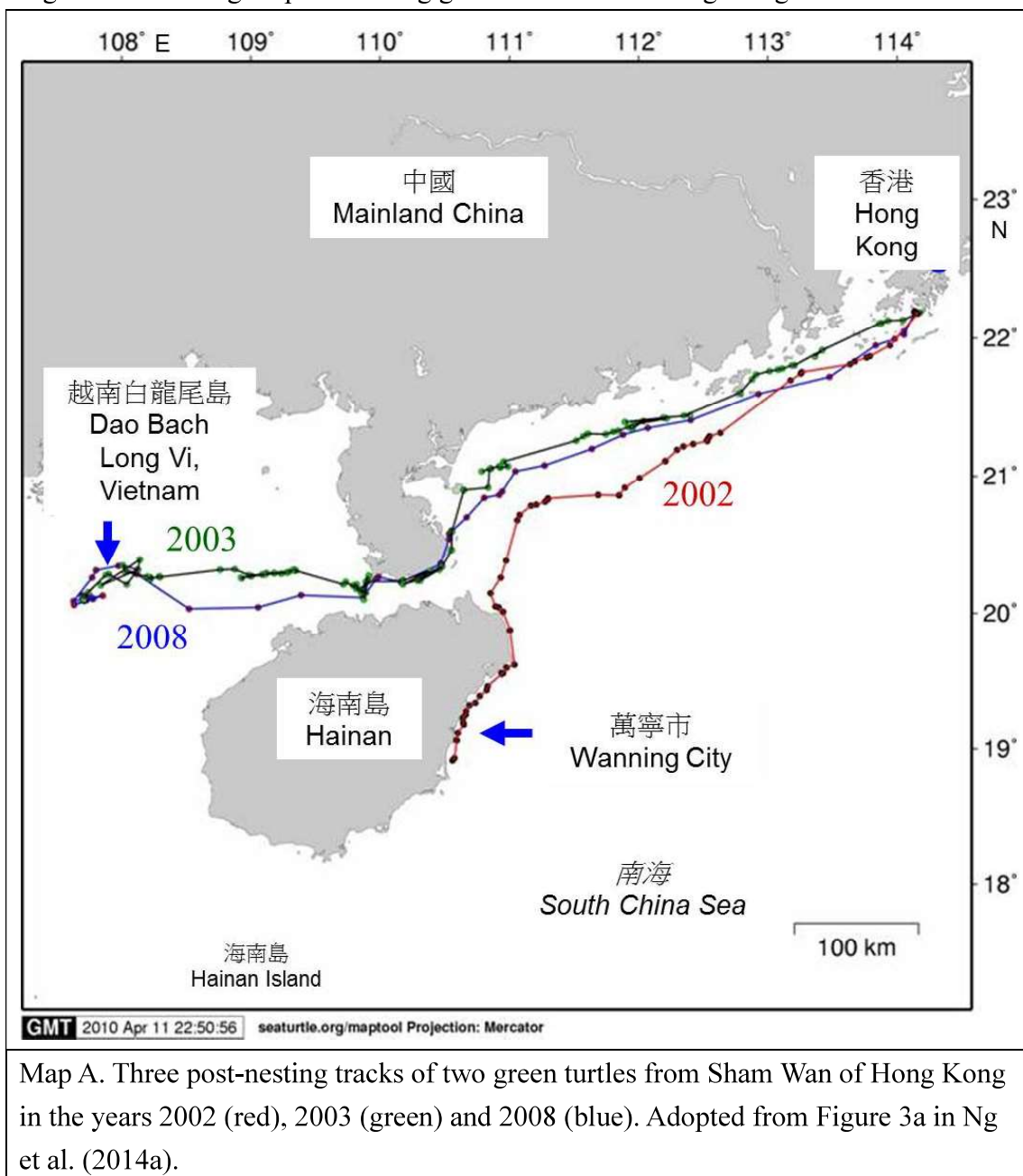
Juvenile Green Turtle CCL: 35cm Source: Floating in Yan Chau Tong, HK
TAM-2639 ID: 134341 First location: 23 June 2014 Days transmitting: 39



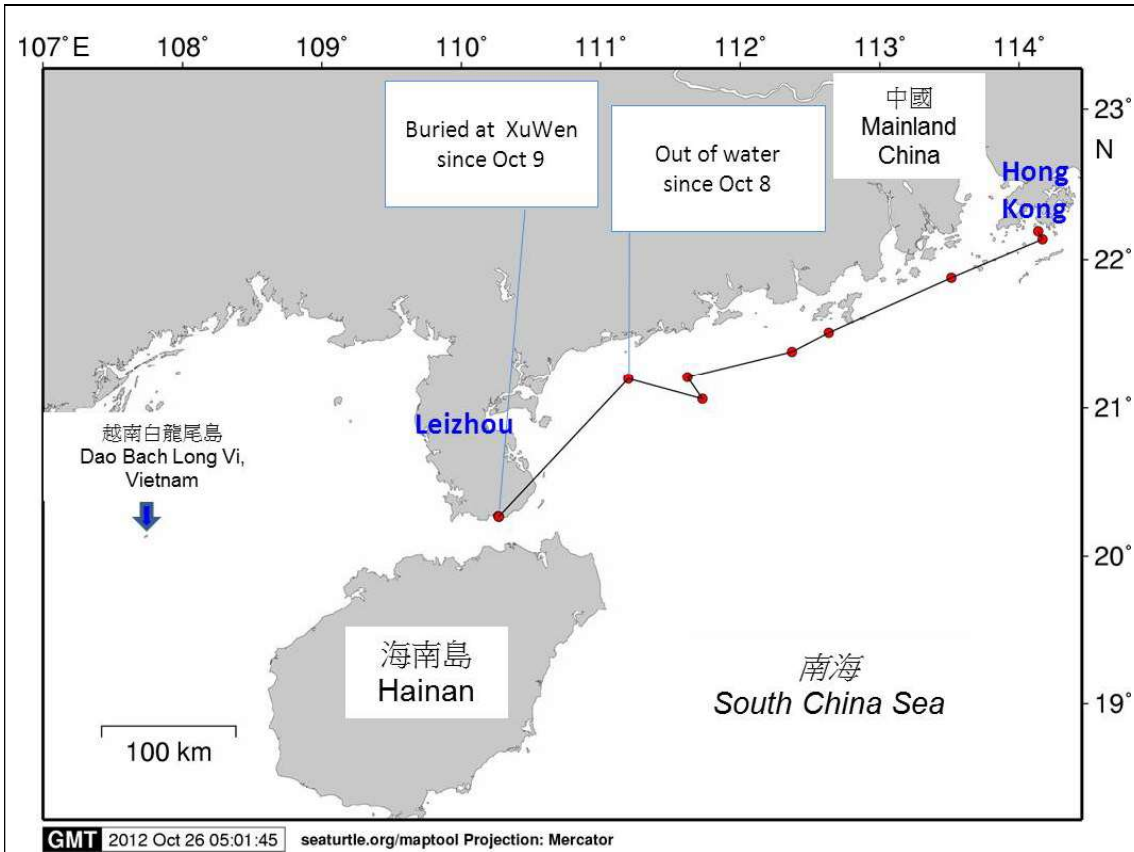
GMT 2014 Aug 3 01:13:49 seaturtle.org/maptool Projection: Mercator

Map 23. 134341

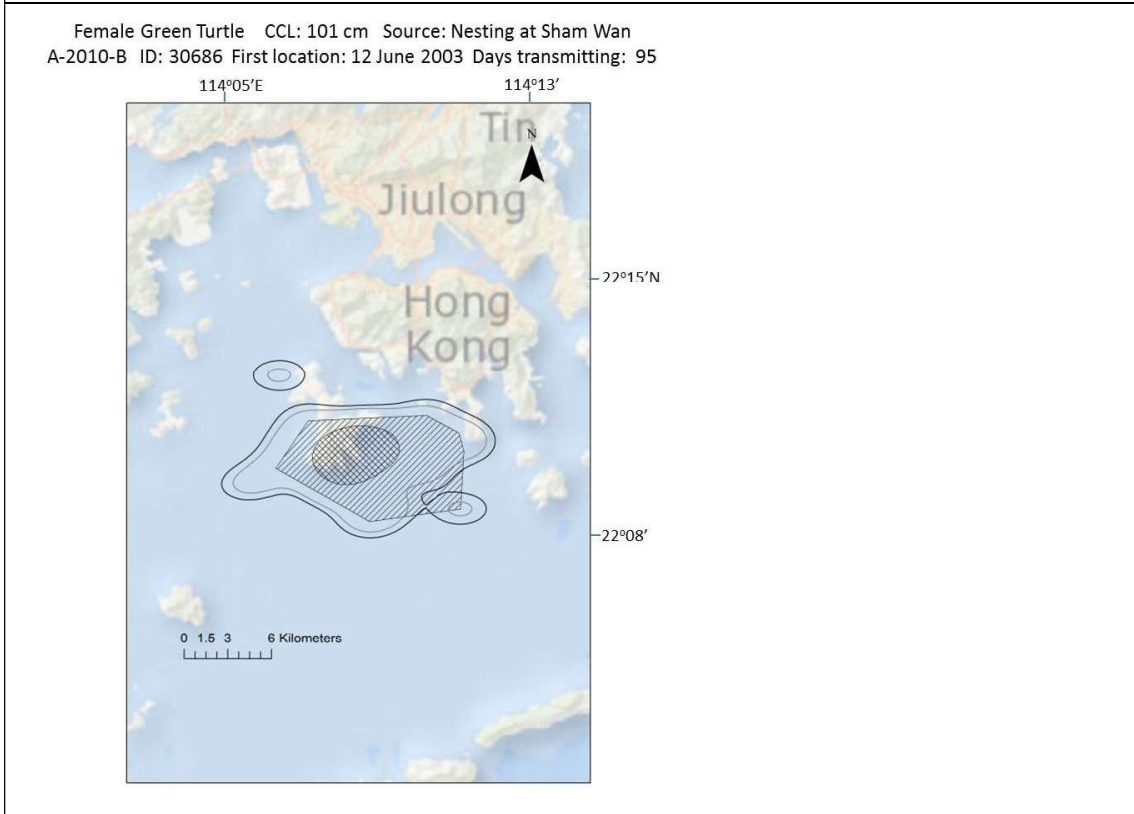
Figures B Tracking maps of nesting green turtles from Hong Kong and Taiwan.



Map A. Three post-nesting tracks of two green turtles from Sham Wan of Hong Kong in the years 2002 (red), 2003 (green) and 2008 (blue). Adopted from Figure 3a in Ng et al. (2014a).

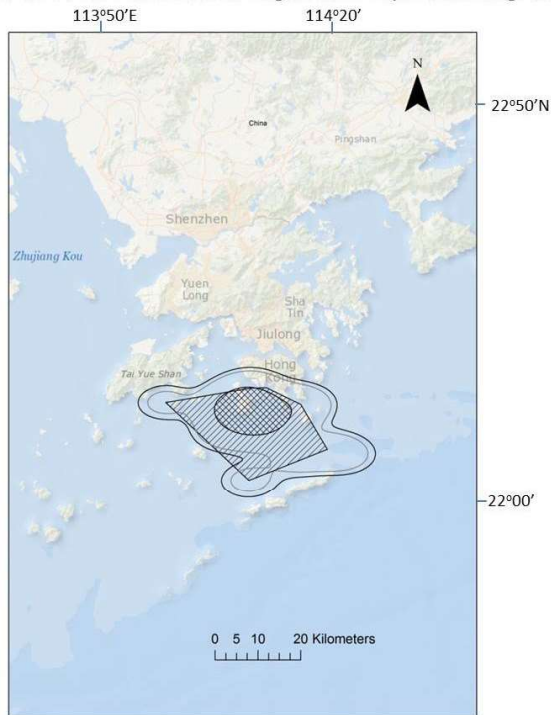


Map B. Post-nesting track of the green turtle, which also nested in 2003 and 2008, in 2012. Adopted from Figure 3b of Ng et al. (2014a).



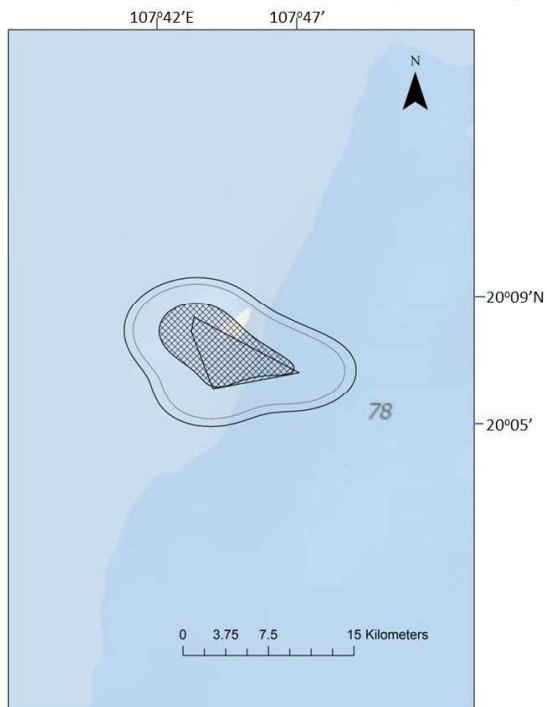
Map C. 30686 (inter-nesting period)

Female Green Turtle CCL: 101 cm Source: Nesting at Sham Wan
A-2010-B ID: 76440 First location: 7 August 2008 Days transmitting: 67



Map D. 76440 (inter-nesting period)

Female Green Turtle CCL: 101 cm Source: Nesting at Sham Wan
A-2010-B ID: 76440 First location: 30 October 2008 Days transmitting: 20

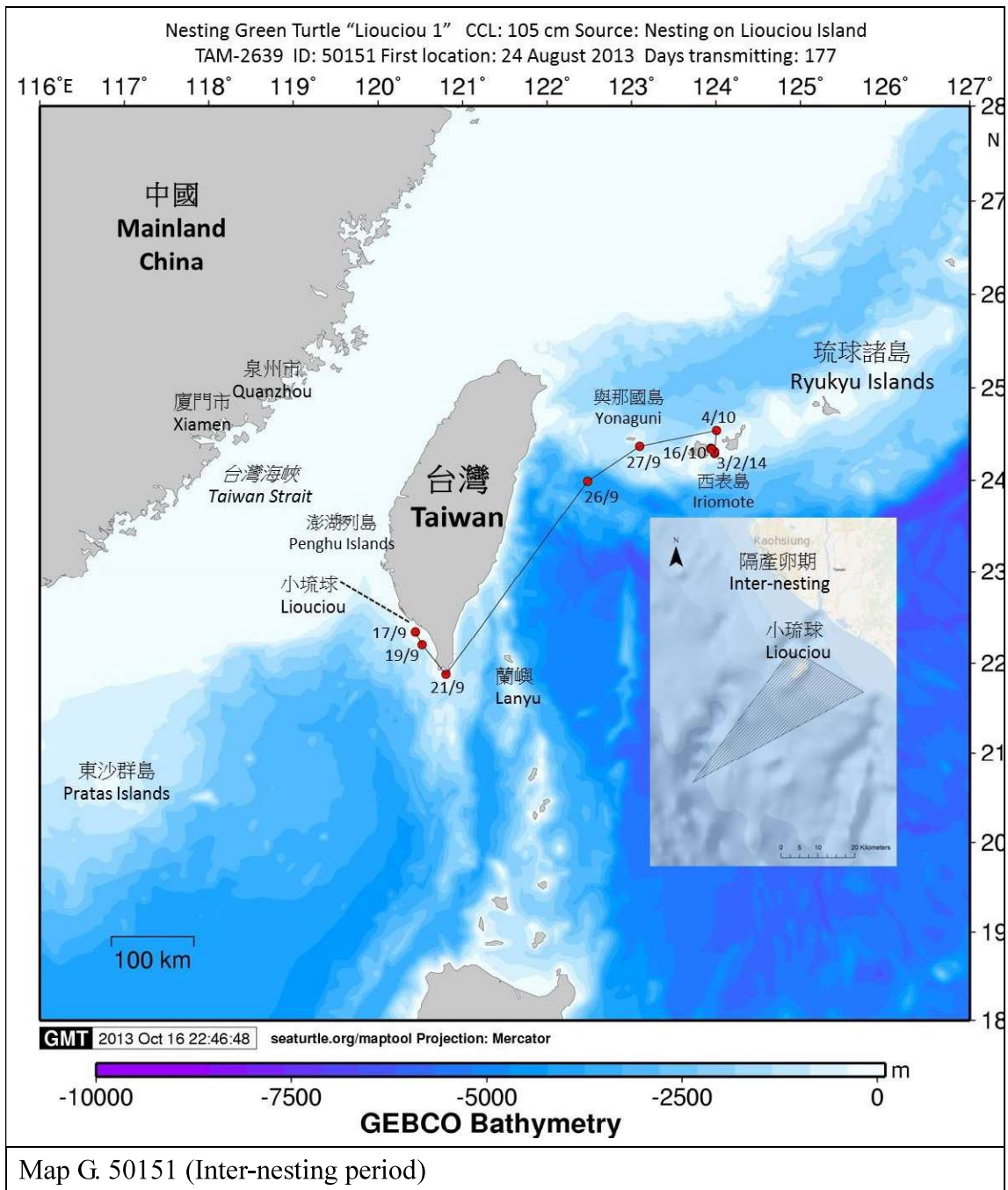


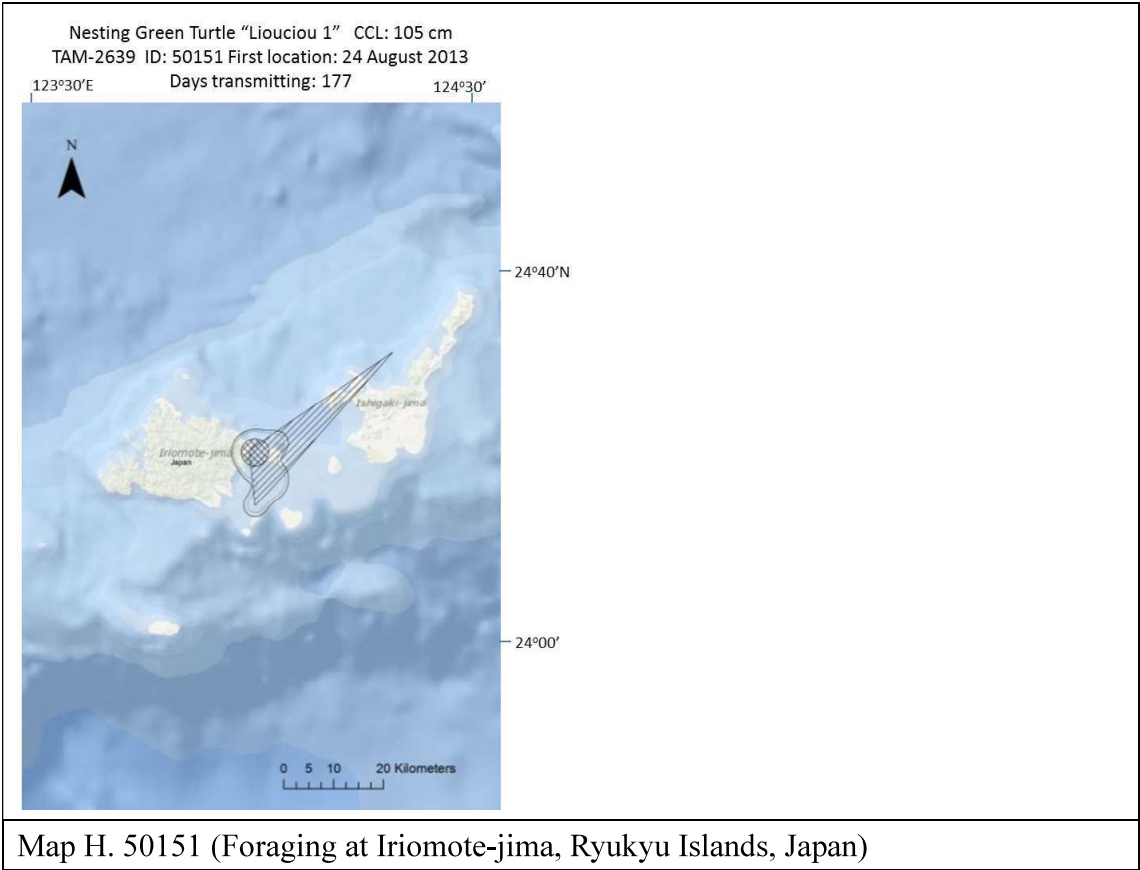
Map E. 76440 (foraging period)

Female Green Turtle CCL: 101 cm Source: Nesting at Sham Wan
First location: 15 August 2012 Days transmitting: 48

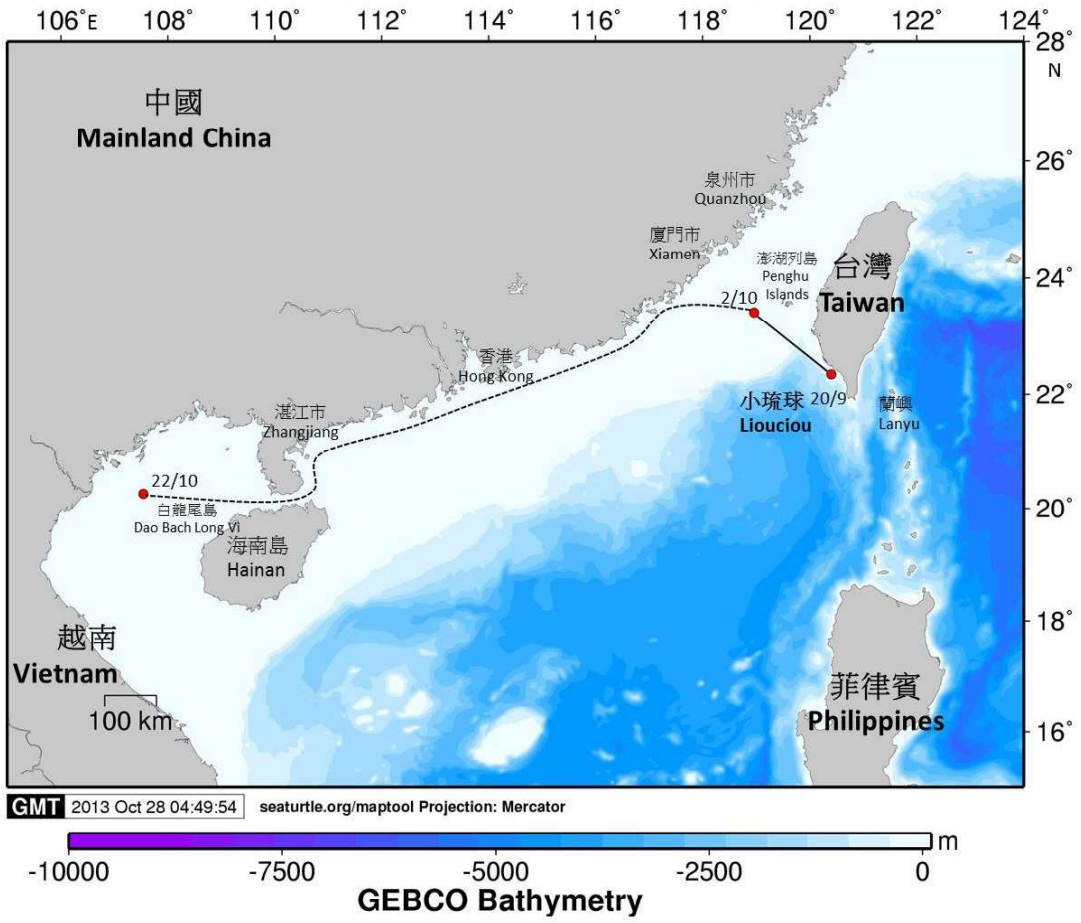


Map F. 110601 & 121213 (Inter-nesting period)





Nesting Green Turtle "Liouciou 2" CCL: 108 cm Source: Nesting on Liouciou Island
TAM-2639 ID: 53767 First location: 24 August 2013 Days transmitting: 64



Map I. 53767

1 Appendix

2 Table 1 Physical features of each released green turtle with tracking results and home range extent of foraging and inter-nesting ground (if available). F stands for female, M for male, U for unknown sex. Duration of tracking includes start and end days.

4 (A) By-catch or stranded green turtles (Turtles marked with asterisk with tag IDs 52100, 60991, 60995, 65417, 76441 & 88057 were by-catch)

Biological & Physical Information					Start	End	Distance moved (km)					Duration of tracking (days)			Speed (km/ hr)			Home Range Extent (km ²), foraging ground			
Tag ID	Origin	Cara-pace length (cm)	Age	Sex	Date of first location	Location (lat 'N, long 'E)	Location (lat 'N, long 'E)	Duration of tracking (days), inclusive	End point	In transit	At foraging ground	Inter-nesting	In transit	At foraging ground	Inter-nesting	In transit	At foraging ground	MCP	KDE50 %	KDE90 %	KDE95 %
40702	Hengchun, Pingtung, Taiwan	CCL: 51	Juvenile	U	25-Apr-14	NMMBA, Pingtung, Taiwan (22.04, 120.70)	(Stranded on land) north of Tosaku Bay, Taitung, Taiwan (22.91, 121.27)	155	N/A	13	N/A	N/A	N/A	N/A	N/A	N/A	N/A	N/A	N/A	N/A	N/A
41788	New Taipei City, Taiwan	CCL: 45	Juvenile	U	31-May-14	NMMBA, Pingtung, Taiwan (22.04, 120.70)	Danshui, Northern Taiwan (25.23, 121.45)	124	416	410	66	N/A	15	109	N/A	1.14	0.03	N/A	N/A	N/A	N/A
52099	Guangdong, China	CCL: ca.80	Adult	F	25 May 2007	Huidong Gangkou Sea Turtle National Nature Reserve, China (22.54, 114.88)	Wanshan Archipelago, China (22.06, 113.72)	55	131	105	345	N/A	6	49	N/A	0.73	0.29	1017	356	1232	1545

5

6 Table 1 (A) By-catch or stranded green turtles (Turtles marked with asterisk with tag IDs 52100, 60991, 60995, 65417, 76441 & 88057 were by-catch)

Tag ID	Biological & Physical Information				Date of first location	Start Location (lat 'N, long 'E)	End Location (lat 'N, long 'E)	Duration of tracking (days), inclusive	Distance moved (km)			Duration of tracking (days)			Speed (km/ hr)			Home Range Extent (km ²), foraging ground			
	Origin	Cara-pace length (cm)	Age	Sex					End point	In transit	At foraging ground	Inter-esting	In transit	At foraging ground	Inter-esting	In transit	At foraging ground	MCP	KDE50 %	KDE90 %	KDE95 %
52100*	Guang-dong, China	Nil	Adult	F	11 Jun 2011	Yangjiang, China (21.76, 112.00)	Xinbuhai, North Hainan Island, China (20.11, 110.62)	18	255	303	40	N/A	12	6	N/A	1.05	0.28	N/A	N/A	N/A	N/A
52101	Guang-dong, China	CCL: 88	Adult	F	24 Oct 2006	Huidong Gangkou Sea Turtle National Nature Reserve, China (22.54, 114.88)	San Bernardino Strait, South of Luzon, Philippines (12.70, 124.16)	153	1464	3131	101	N/A	127	26	N/A	1.03	0.16	131	83	285	355
53748	Taiwan	CCL: 80.6	Sub-adult	U	9-Dec-13	Kenting, Taiwan (21.95, 120.75)	Taiwan East (22.23, 120.92)	188	41	537	74	N/A	135	53	N/A	0.17	0.06	50	53	144	168

7

8

9

10

11

12 Table 1 (A) By-catch or stranded green turtles (Turtles marked with asterisk with tag IDs 52100, 60991, 60995, 65417, 76441 & 88057 were by-catch)

Biological & Physical Information					Start	End	Distance moved (km)			Duration of tracking (days)			Speed (km/ hr)			Home Range Extent (km ²), foraging ground					
Tag ID	Origin	Cara-pace length (cm)	Age	Sex	Date of first location	Location (lat 'N, long 'E)	Location (lat 'N, long 'E)	Duration of tracking (days), inclusive	End point	In transit	At foraging ground	Inter-esting	In transit	At foraging ground	Inter-esting	In transit	At foraging ground	MCP	KDE50 %	KDE90 %	KDE95 %
60991 *	Mui Wo, Hong Kong	SCL: 45	Juvenile	U	6 Aug 2010	Near Pok Liu, Po Toi, Hong Kong (22.20, 114.17)	Jieshengzhen, Shanwei, China (22.71, 115.43)	68	147	405	N/A	N/A	68	N/A	N/A	0.25	N/A	N/A	N/A	N/A	N/A
60992	Hong Kong	SCL: 83.9	Adult	F	7 Jul 2011	South of Po Toi, Hong Kong (22.10, 114.14)	Magong Port, Shanwei, China (22.82, 115.23)	84	126	138	stranded floating nearby island 江牡島 in Shanwei	N/A	6	N/A	N/A	0.96	N/A	N/A	N/A	N/A	N/A
60995 *	Tai Po, Hong Kong	SCL: 83	Adult	F	28 Jan 2013	Port Island, Mirs Bay, Hong Kong east (22.50, 114.35)	East of Port Island, Hong Kong (22.50, 114.39)	34	4	N/A	194	N/A	N/A	34	N/A	N/A	0.24	423	303	1109	1369
65417 *	Guang-dong, China	Nil	Adult	F	24 Jul 2013	Huidong Gangkou Sea Turtle National Nature Reserve (22.55, 114.89)	Bangui Bay, Luzon, North Philippines (18.58, 120.62)	97	750	1031	22	N/A	33	64	N/A	1.30	0.01	32	12	56	78

13

14 Table 1 (A) By-catch or stranded green turtles (Turtles marked with asterisk with tag IDs 52100, 60991, 60995, 65417, 76441 & 88057 were by-catch)

Biological & Physical Information					Start	End	Distance moved (km)				Duration of tracking (days)			Speed (km/ hr)			Home Range Extent (km ²), foraging ground				
Tag ID	Origin	Carapace length (cm)	Age	Sex	Date of first location	Location (lat 'N, long 'E)	Location (lat 'N, long 'E)	Duration of tracking (days), inclusive	End point	In transit	At foraging ground	Inter-nesting	In transit	At foraging ground	Inter-nesting	In transit	At foraging ground	MCP	KDE50 %	KDE90 %	KDE95 %
68329	Dongsha Islands	SCL: 41	Juvenile	U	13-May-13	Dongsha Island (20.70, 116.73)	Northwest Danger Shoals, Great Danger Bank, Palawan, South Philippines (7.72, 117.13)	143	1436	1781	190	N/A	74	69	N/A	1.00	0.12	770	974	3978	5148
71914	Manjhou, Pingtung, Taiwan	CCL: 61	Juvenile	U	9-Dec-13	Kenting, Taiwan (21.95, 120.75)	Manjhou Village, Pingtung, Taiwan (22.16, 120.92)	138	45	37	402	N/A	15	123	N/A	0.10	0.14	343	89	503	692
76439	Wanshan Archipelago, China	SCL: 37	Juvenile	U	19 Jul 2008	Hong Kong South (22.16, 114.16)	Nanzi District, Kaohsiung, Taiwan (22.73, 120.25)	22	618	607	81	N/A	13	9	N/A	1.95	0.37	N/A	N/A	N/A	N/A

15

16

17

18

19 Table 1 (A) By-catch or stranded green turtles (Turtles marked with asterisk with tag IDs 52100, 60991, 60995, 65417, 76441 & 88057 were by-catch)

Tag ID	Biological & Physical Information				Date of first location	Start Location (lat 'N, long 'E)	End Location (lat 'N, long 'E)	Duration of tracking (days), inclusive	Distance moved (km)			Duration of tracking (days)			Speed (km/ hr)			Home Range Extent (km ²), foraging ground			
	Origin	Cara-pace length (cm)	Age	Sex					End point	In transit	At foraging ground	Inter-esting	In transit	At foraging ground	Inter-esting	In transit	At foraging ground	MCP	KDE50 %	KDE90 %	KDE95 %
76441 *	Sai Kung, Hong Kong	SCL: 94	Adult	F	8 Oct 2008	near Basalt Island Sai Kung, Hong Kong (22.31, 114.33)	Tai Miu Wan, Sai Kung, Hong Kong (By-catch) (22.26, 114.29)	382	12	N/A	137	N/A	N/A	19	N/A	N/A	0.30	274	371	1090	1372
88057 *	Penghu Island, Taiwan	CCL: 90.8/ SCL: 83.7	Adult	U	4-Dec-13	Penghu Island, Taiwan (23.53, 119.57)	Huwin Village, Penghu, Taiwan (23.63, 119.65)	165	34	1710	109	N/A	72	93	N/A	0.99	0.05	72	31	134	191
96513	Unknown	SCL: 95	Adult	F	11 Nov 2010	South of Po Toi, Hong Kong (22.18, 114.25)	Dongsha Island (20.73, 116.76)	31	308	480	46	N/A	10	21	N/A	2.00	0.09	117	262	732	907
104684	Unknown	SCL: 47.1	Juvenile	U	5 May 2011	South of Po Toi, Hong Kong (22.10, 114.14)	Wanshan Archipelago, China (22.06, 114.14)	76	18	13	333	N/A	5	71	N/A	0.11	0.20	299	64	440	606

20

21

22 Table 1 (A) By-catch or stranded green turtles (Turtles marked with asterisk with tag IDs 52100, 60991, 60995, 65417, 76441 & 88057 were by-catch)

Biological & Physical Information					Start	End	Distance moved (km)			Duration of tracking (days)			Speed (km/ hr)			Home Range Extent (km ²), foraging ground					
Tag ID	Origin	Cara-pace length (cm)	Age	Sex	Date of first location	Location (lat 'N, long 'E)	Location (lat 'N, long 'E)	Duration of tracking (days), inclusive	End point	In transit	At foraging ground	Inter-esting	In transit	At foraging ground	Inter-esting	In transit	At foraging ground	MCP	KDE50 %	KDE90 %	KDE95 %
104685	Unknown	SCL: 69	Sub-adult	U	5 May 2011	South of Po Toi, Hong Kong (22.10, 114.14)	Taiwan Strait (22.46, 118.86)	55	471	N/A	1803	N/A	N/A	55	N/A	N/A	1.37	92734 (pelagic)	N/A	N/A	N/A
104686	Unknown	SCL: 53	Juvenile	U	5 May 2011	South of Po Toi, Hong Kong (22.10, 114.14)	Dongsha Island (20.68, 116.89)	48	322	858	133	N/A	31	17	N/A	1.15	0.32	58	47	180	235
104687	Pak Sha Wan, Sai Kung, Hong Kong	SCL: 72.8	Sub-adult	F	7 Jul 2011	South of Po Toi, Hong Kong (22.10, 114.14)	Fujian East Harbour, China (25.41, 119.43)	24	642	645	136	N/A	14	6	N/A	1.92	0.94	5	4	14	18
104713	Unknown	SCL: 44.1	Juvenile	U	6 May 2011	South of Po Toi, Hong Kong (22.10, 114.14)	Luzon, North Philippines (18.50, 120.57)	322	786	1384	648	N/A	40	282	N/A	1.44	0.10	117	13	77	146

23

24

25

26 Table 1 (A) By-catch or stranded green turtles (Turtles marked with asterisk with tag IDs 52100, 60991, 60995, 65417, 76441 & 88057 were by-catch)

Biological & Physical Information					Start	End		Distance moved (km)			Duration of tracking (days)			Speed (km/ hr)			Home Range Extent (km ²), foraging ground				
Tag ID	Origin	Cara-pace length (cm)	Age	Sex	Date of first location	Location (lat 'N, long 'E)	Location (lat 'N, long 'E)	Duration of tracking (days), inclusive	End point	In transit	At foraging ground	Inter-esting	In transit	At foraging ground	Inter-esting	In transit	At foraging ground	MCP	KDE50 %	KDE90 %	KDE95 %
129723	Sham Wan, Lamma Island, Hong Kong	CCL: 79	Sub-adult	M	23 Jun 2014	Northwest of Po Toi, Hong Kong (22.19, 114.25)	South Daiso Bay (SDB), Kang Wei, Penghu, Taiwan (23.54, 119.58)	78	559	576	46	N/A	12	51	N/A	2.00	0.04	1.05 (at North DB) & 2.42 (at SDB)	0.2 & 1.5	1.22 & 6.04	1.75 & 7.84
134341	Yan Chau Tong, Hong Kong	CCL: 35	Juvenile	U	23 Jun 2014	Northwest of Po Toi, Hong Kong (22.19, 114.25)	WenZhou, East China Sea (28.44, 123.05)	29	1130	1207	N/A	N/A	29	N/A	N/A	1.73	N/A	N/A	N/A	N/A	N/A

27

28

29

30

31

32

33

34

35

36

37 Table 1 (B) Nesting green turtles

Tag ID	Origin	Carapace length (cm)	Date of first location	Start Location (lat 'N, long 'E)	End Location (lat 'N, long 'E)	Duration of tracking (days), inclusive	Distance moved (km)					Duration of tracking (days)			Speed (km/ hr)			Home Range Extent (km ²), foraging ground				Home Range Extent (km ²), inter-nesting ground			
							Integrated distance	End point	Inter-nesting	In transit	At foraging ground	Inter-nesting	In transit	At foraging ground	Inter-nesting	In transit	At foraging ground	MC P	KDE5 0%	KDE9 0%	KDE9 5%	MC P	KDE5 0%	KDE9 0%	KDE9 5%
76440	Sham Wan, Lamma Island, Hong Kong	CCL: 101	8 Aug 2008	Sham Wan, Hong Kong (22.19, 114.14)	Bach Long Vi, Vietnam (20.12, 107.71)	105	1065	703	257	770	38	67	18	20	0.16	1.78	0.08	24	43	130	163	376	118	560	719
110601 & 121213	Sham Wan, Lamma Island, Hong Kong	CCL: 101	15 & 28 Aug 2012	Sham Wan, Hong Kong (22.19, 114.14)	Xuwen County, Guangdong, China (20.27, 110.27)	54	445	455	84	migration before death: 361km	N/A	48	6	N/A	0.07	2.50	N/A	N/A	N/A	N/A	N/A	27	5	45	59
50151	Liouciou Island, Taiwan	SCL: 97.5	26-Aug-13	Liouciou Island Northeast, Taiwan (22.35, 120.39)	East of Iriomotejima, Ryukyu Islands, Japan (24.35, 123.94)	177	862	493	94	558	209	24	18	135	0.16	1.29	0.06	123	14	71	92	427	N/A	N/A	N/A

53767	Liouciou Island, Taiwan	SCL: 99	24-Aug-13	Liouciu Island Northeast, Taiwan (22.35, 120.39)	Dao Bach Long Vi Island, Beibu Bay, Vietnam (20.26, 107.55)	64	1506	1353	87	1419	N/A	26	38	N/A	0.14	1.56	N/A	N/A	N/A	N/A	N/A	N/A	N/A	N/A	N/A	N/A	N/A	N/A	N/A
-------	-------------------------	---------	-----------	--	---	----	------	------	----	------	-----	----	----	-----	------	------	-----	-----	-----	-----	-----	-----	-----	-----	-----	-----	-----	-----	-----

39 Table 2 Home range extent (km²) at each respective foraging/ inter-nesting ground in this study and other studies. Habitat type is provided if available.

				Foraging ground				Inter-nesting ground						
Location	Age	Sex	Duration of tracking at foraging ground	MCP	KDE50%	KDE90%	KDE95%	MCP	KDE50%	KDE90%	KDE95%	Sample size	Reference	Method of tracking
Luzon, North Philippines	Sub-adult & Adult	F	64-282	32-117	12-13	56-77	78-146	N/A				2	This study	Satellite tracking
South of Luzon, Palawan Philippines	Adult	F	26	131	83	285	355					1		
Northwest Danger Shoals, Great Danger Bank, Palawan, South Philippines	Juvenile	U	69	770	974	3978	5148					1		
Dongsha Island	Sub-adult & Adult	F	17-21	58-117	47-262	180-732	235-904					2		
Wanshan Archipelago, China	Sub-adult & Adult	F	49-71	299-1017	64-356	440-1232	606-1545					2		
Hong Kong East (Sai Kung, Port Island)	Adult	F	19-34	274-423	303-371	1090-1109	1369-1372					2		
Huwin Village, Penghu, Taiwan	Adult	U	93	71	31	134	191					1		

40

41

42

43 Table 2 Home range extent (km²) at each respective foraging/ inter-nesting ground in this study and other studies

				Foraging ground				Inter-nesting ground						
Location	Age	Sex	Duration of tracking at foraging ground	MCP	KDE50%	KDE90%	KDE95%	MCP	KDE50%	KDE90%	KDE95%	Sample size	References	Method of tracking
Penghu, Taiwan	Adult	M	51	1.1 (at North Daiso Bay)	0.2	1.2	1.8	N/A				1	This study	Satellite tracking
				2.4 (at South Daiso Bay)	1.5	6.0	7.8							
Taiwan Strait	Sub-adult	U	55	92734 (pelagic feeding)	N/A	N/A	N/A							
Taiwan East	Juvenile, Sub-adult	U	53-123	50-343	53-89	144-503	168-692					2		
Dao Bach Long Vi, Vietnam	Adult	F	N/A	N/A	N/A	N/A	N/A	52	11	68	86	1		
Dao Bach Long Vi, Vietnam	Adult	F	20	24	43	130	163	376	118	560	719			
Xuwen County, Guangdong, China	Adult	F	N/A	N/A	N/A	N/A	N/A	27	5	45	59			

45 Table 2 Home range extent (km²) at each respective foraging/ inter-nesting ground in this study and other studies

Location	Age	Sex	Duration of tracking at foraging ground	Foraging ground				Inter-nesting ground				Sample size	References	Method of tracking
				MCP	KDE50%	KDE90%	KDE95%	MCP	KDE50%	KDE90%	KDE95%			
East of Iriomote-jima, Ryukyu Islands, Japan	Adult	F	135	123	14	71	92	427	N/A	N/A	N/A	1	This Study	Satellite tracking
North-Eastern Australia (Offshore tropical reefs with a vegetated sand cay and mangrove cay)	Juvenile	U	84.6 (23-100)	\	0.14±0.043 (0.08-0.24)	\	0.74±0.159 (0.47-1.04)	\	\	\	\	17	Hazel, Hamann, & Lawler (2013)	Automated ultrasonic transmitter
Repulse Bay, Australia (Localised seagrass)	Adult	U	11.5	3.15	\	\	\	\	\	\	\	10	Whiting and Miller (1998)	Radio telemetry
Palm Beach, Florida, U.S. (Narrow clustered patches of macroalgae)	Juvenile	U	60	2.38±1.8 (0.69-5.05)	\	\	2.09±1.8 (0.73-4.89)	\	\	\	\	6	Makowski et al. (2006)	Smallest home range reported, Tracked by sonic and direct sighting
Kaneohe Bay, Oahu, Hawaii, U.S. (Clustered macroalgae)	Juvenile	U	13	2.62	\	\	\	\	\	\	\	12	Brill et al. (1995)	Sonic telemetry

46
47

48 Table 2 Home range extent (km²) at each respective foraging/ inter-nesting ground in this study and other studies

				Foraging ground				Inter-nesting ground						
Location	Age	Sex	Duration of tracking at foraging ground	MCP	KDE50% (core use)	KDE90%	KDE95%	MCP	KDE50%	KDE90%	KDE95%	Sample size	References	Method of tracking
Everglades, Florida, US (Mangroves and mudflat)	Juvenile	U	47.7 (27-62)	1004.9±618.8 (374.1-2060.1)	22.5±22.1 (5.0-54.4)	\	154.4±136.1 (24.6-371.0)	\	\	\	\	6	Hart et al. (2010)	Satellite tracking
Mansfield Channel, Texas, U.S. (Seagrass and algae beds)	Juvenile	U	182.9 (8-434)	\	332.0±353.6 (32.1-1056.7)	\	2075.4±1567.2(406.3-4944.4)	\	\	\	\	\	Shaver, Hart, Fujisaki, Rubio, & Sartain, (2013a)	Satellite tracking
Mosquito Lagoon, Florida, U.S. (Clustered seagrass)	Juvenile	U	40	2.88	\	\	\	\	\	\	\	9	Mendonca (1983)	Sonic telemetry
Failaka Island, Saudi Arabia	Adult	U	238-248	\	8.4-14.5	\	64.9-75.9	\	\	\	\	2	Rees et al. (2013)	Satellite tracking
Kuwait, Saudi Arabia	Adult	F	2-121	\	\	\	\	\	3.8	\	\	2	Rees et al. (2013)	Satellite tracking

49 Table 2 Home range extent (km²) at each respective foraging/ inter-nesting ground in this study and other studies

				Foraging ground				Inter-nesting ground						
Location	Age	Sex	Duration of tracking at foraging ground	MCP	KDE50% (core use)	KDE90%	KDE95%	MCP	KDE50%	KDE90%	KDE95%	Sample size	References	Method of tracking
Egypt, Libya, Syria, Tunisia and Turkey	Adult	F	291 (43-424)	summer: 77±72 (12-90); winter: 37±37(10-28)	\	\	\	\	\	\	\	10	Broderick et al. (2007)	Satellite tracking
Gulf of Panama, Off Nicaragua, Gulf of Papagayo, Gulf of Elana in Central America	Adult	F	55 (18-89)	4894.56±6212.50 (315-18,335)	950	\	\	\	\	\	\	9	Blankco et al. (2012a)	Satellite tracking
Costa Rica, East Pacific	Adult	F	19.4 (5-39)	\	\	\	\	\	2.6-3	\	11.02-14.5(pooled)	12	Blanco et al. (2012b)	Satellite tracking
Scattered algae fields, Gulf of California, Mexico	Juvenile and Adult	U and M	60	16.62±3.2 (0.58-39.08)	\	\	15.37±2.8 (0.41-32.31)	\	\	\	\	12	Seminoff et al. (2002)	Radio and sonic tracking

51 Table 3 Foraging grounds of sea turtles identified by satellite telemetry, news reports and interviews with local people on sea turtle strandings or
 52 sightings in South China Sea. Foraging grounds of green turtle that nest in South China Region are listed separately for easy reference.

Species	Nesting ground	Foraging ground	References
Green turtle	N/A	Along the coastline of mainland China from south to north: Coastal waters of Guangdong such as Xuwen of Zhangjiang, Taishan, Wanshan Archipelago, Mirs Bay including Nanao, Daya Bay including Gangkou, Shanwei including Guiling Island, Nanao Island of Shantou; Beihai of Guangxi; Pingtan Island and Dongshan Island and East Harbour in Fujian; Yuhuan, Daishan and Dongyushan of Zhejiang; Qingdao in Shandong; Hainan Island: including Haikou, Qionghai, Wanning, Wen-chang and Sanya; Taiwan: coastal waters, Penghu Islands, Taitung, Liouciou Island; South China Sea: Taiwan Strait; Pratas (Dongsha) Island; Paracel (Xisha) Islands; Luzon, north of the Philippines; Palawan, south of the Philippines	Chan et al., 2007; Chen, 1995; Cheng & Chen, 1997; Cheng, 2000; Frazier et al., 1988; Huang, 1979; Xia & Gu, 2012; Cheng, 2013; Xu & Zheng, 2003; Wang & Li, 2008; Jinghua, 2011; Ye, Chen, Gu, & Li, 2015; The present study
Hawksbill	N/A	Along the southern coastline of mainland China: Waters surrounding Nanao Island and Dongshan Island, between Guangdong and Fujian; Taishan and Huidong of Guangdong; Hainan: Coastal waters; Taiwan: Coastal waters; South China Sea: Paracel (Xisha) Island	Chen, 1995; Cheng & Chen, 1997; Huang, 1979; Xu & Zheng, 2003; The present study
Olive ridley	N/A	Along the southern coastline of mainland China: Waters surrounding Nanao Island and Dongshan Island, between Guangdong and Fujian; Taiwan: Coastal waters; South China Sea: Luzon Strait	Cheng & Chen, 1997; Huang, 1979; Xu & Zheng, 2003; The present study
Loggerhead (including nesting turtles from Minabe, Japan)	N/A	Coastal waters off Guangdong, Shandong and Taiwan; East China Sea including Dongyushan of Zhejiang	Cheng & Chen, 1997; Cong & Wang, 1997; Hangzhou, 2012; Hatase et al., 2002; Huang, 1979; Kobayashi et al., 2011; Wang & Li, 2008
Leatherback	N/A	Along the coastline of mainland China from north to south: Shandong; Liaoning; Lusi in Jiangsu; Waters surrounding Nanao Island and Dongshan Island, between Guangdong and	Benson et al., 2011; Cheng & Chen, 1997; Hua & Yin, 1993, Xu &

Species	Nesting ground	Foraging ground	References
		Fujian; Hainan Island; Coastal waters off Taiwan; The Philippines; Malaysia	Zheng, 2000
Green Turtle (Nesting in South China Region)	Sham Wan, Hong Kong	Wanning of Hainan, Dao Bach Long Vi in Vietnam	Chan, Chan, Lo, & Balazs, 2003; Ng et al., 2014a
	Gangkou Reserve, Guangdong, China	East coast of Leizhou Peninsula; Okinawa Island in southern Japan	Song et al., 2002
	Wan-an Island, Taiwan	Coastal waters off northern Taiwan, Qinpeng-Dao of Nanao Island at Shantou, Huidong, Pratas (Dongsha) Island, Wanning City of Hainan Island, Dangan Liedao of Wanshan Archipelago, east coast of Leizhou Archipelago, northern Philippines, Ishigaki-shima of Ryukyu Archipelago, Koshiki, Okinawa Island in southern Japan	Cheng, 2000
	Lanyu Island, Taiwan	Coral reefs in the southern Penghu Archipelago, north of Chimei Island, Taiwan	Chan et al., 2007
	Liouciou Island, Taiwan	Coastal waters of Iriomote-jima of Ryukyu Islands, Japan; Dao Bach Long Vi in Vietnam	The present study
	Taipin Island, Nansha Archipelago	Coastal waters off Palawan Island, the Philippines; the north coast of eastern Malaysia; east coast of Luzon Island, the Philippines	Cheng, 2007

53

54 References

55

56 Benson, S.R., Eguchi, T., Foley, D.G., Forney, K.A., Bailey, H., Hitipeuw, C., ...Dutton, P.H. (2012). Large-scale movements and high-use areas of
57 western Pacific leatherback turtles, *Dermochelys coriacea*. *Ecosphere*, 2(7), Article 84.

58

59 Chan, S. K. F., Chan, J. K., Lo, L. T., & Balazs, G. H. (2003). Satellite tracking of the post-nesting migration of a green turtle (*Chelonia mydas*) from
60 Hong Kong. *Marine Turtle Newsletter*, 102, 2-4.

61

62 Chan, S. K. F., Cheng, I. J., Zhou, T., Wang, H. J., Gu, H. X., & Song, X. J. (2007). A comprehensive overview of the population and conservation
63 status of sea turtles in China. *Chelonian Conservation and Biology*, 6(2), 185-198.

64

65 Chen, W.L. (1995). Release of Green Turtle and Hawksbill at Tai Shan of South China. *Fisheries Science and Technology*, 4, 46.

66

67 Cheng, I.J. (2000). Post-nesting migrations of green turtles (*Chelonia mydas*) at Wan-An Island, Penghu Archipelago, Taiwan. *Marine Biology*, 137,
68 747-754.

69

70 Cheng, I.J. (2013). Recovery plan of green turtles on Liouciou Island, Pingtung County. Final Report to the Liuqiu Township Office: Pingtung County,
71 Taiwan.

72

73 Cheng, I.J. (2000). Post-nesting migrations of green turtles (*Chelonia mydas*) at Wan-An Island, Penghu Archipelago, Taiwan. *Marine Biology*, 137,
74 747-754.

75

76 Cheng, I.J. (2007). Nesting Ecology and Postnesting Migration of Sea Turtles on Taipin Tao, Nansha Archipelago, South China Sea. *Chelonian
77 Conservation and Biology*, 6(2), 277-282.

78

79 Cheng, I. J., & Chen, T. H. (1997). The incidental capture of five species of sea turtle by coastal setnet fisheries in the eastern waters of Taiwan.
80 *Biological Conservation*, 82, 255-259.

81

82 Cong, S., & Wang, Z.M. (1997). Study on Marine Turtle and its Raising along the Coasts of Shandong. *Transactions of Oceanology and Limnology*, 3,
83 76-80.

84

85 Frazier, S.S., Frazier, J.G., Ding, H.B., Huang, Z.J., Zheng J., & Lu, L. (1988). Sea turtles in Fujian and Guangdong Provinces. *Acta Herpetologica
86 Sinica*, 7, 16-46.

87

- 88 Hangzhou (2012). Release of rehabilitated loggerhead and green turtle at Dongyushan, Hangzhou of Zhejiang. Retrieved from
89 http://ori.hangzhou.com.cn/ornews/content/2012-11/13/content_4473574.htm
90
- 91 Hatase, H., Takai, N., Matsuzawa, Y., Sakamoto, W., Omuta, K., Goro, K., ...Fujiwara, T. (2002). Size-related differences in feeding habitat use of
92 adult female loggerhead turtles *Caretta caretta* around Japan determined by stable isotope analyses and satellite telemetry. *Marine Ecology Progress*
93 *Series*, 233, 273-281.
94
- 95 Hua, H.L., & Yin, J.W. (1993). Protected animals in China. Shanghai: Shanghai Science and Technology Education Publishing Co.
96
- 97 Huang, C.C. (1979). Distribution of Sea Turtles in China Sea. K.A., Bjorndal. (Eds.), *Biology and Conservation of Sea Turtles* (pp. 321-322),
98 Smithsonian Institution, U.S.
99
- 100 Jinghua (2011). Release of stranded green turtle from Beihai, Guangxi. Retrieved from <http://news.jinghua.cn/351/c/201106/21/n3380402.shtml>
101
- 102 Kobayashi, D.R., Cheng, I.J., Parker, D.M., Polovina, J.J., Kamezaki, N., & Balazs, G.H. (2011). Loggerhead turtle (*Caretta caretta*) movement off the
103 coast of Taiwan: characterization of a hotspot in the East China Sea and investigation of mesoscale eddies. *ICES Journal of Marine Science*,
104 doi:10.1093/icesjms/fsq185.
105
- 106 Ng, C.K.Y., Dutton, P.H., Chan, S.K.F., Cheung, K.S., Qiu, J.W., & Sun, Y.A. (2014a). Characterization and conservation concern of green turtles
107 (*Chelonia mydas*) nesting in Hong Kong, China. *Pacific Science*, 68(2), 231-243.
108
- 109 Song, X.J., Wang, H.J., Wang, W.Z., Gu, H.X., Chan, S., & Jiang, H.S. (2002). Satellite Tracking of Post-Nesting Movements of Green Turtles
110 *Chelonia mydas* from the Gangkou Sea Turtle National Nature Reserve, China, 2001. *Marine Turtle Newsletter*, 97, 8-9.
111
- 112 Wang, Y. M., & Li, W. (2008). Sea turtle survey, monitoring and awareness promotion programme in Mainland China. Final Report. Fish and Wildlife
113 Service, US Department of Interior.
114
- 115 Xia, Z.R., & Gu., H.X. (2012). Reports of satellite tracking green sea turtles in China. *Sichuan Journal of Zoology*, 31(3), 435-438.
116

117 Xu, G., & Zheng, M.Q. (2003). Achievement from sea turtle conservation in Nanao. *Fisheries Science and Technology*, 4, 14.
118

119 Ye, M.B., Chen, H.L., Gu, H.X., & Li, P.P. (2015). Satellite tracking of migration for three captive-reared juvenile green turtles from Huidong National
120 Sea Turtle Reserve. *Sichuan Journal of Zoology*, 34(1), 15-20.
121
122