

Figure 7. Northeast face of La Perouse Pinnacle, 7 August 1965; Little La Perouse at right. POBSP photograph by A. B. Amerson, Jr.

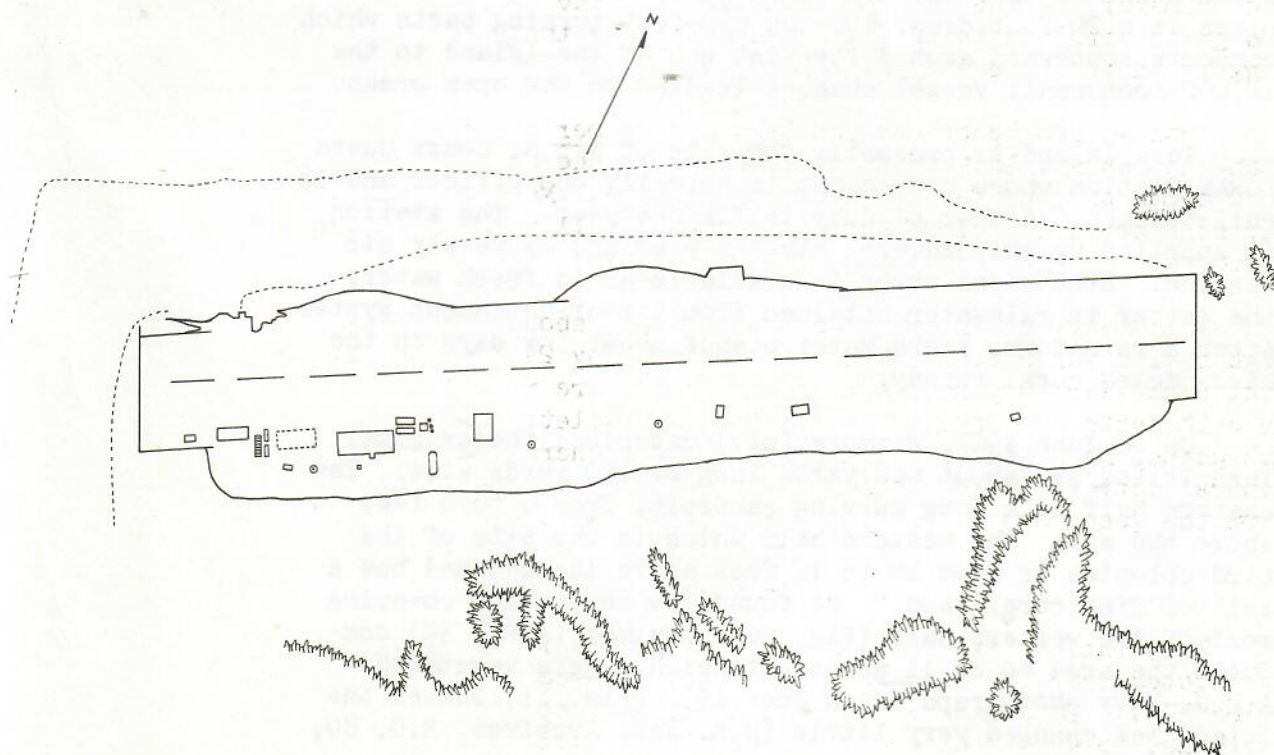


Figure 8. Tern Island, 10 January 1966. Redrawn from official U. S. Navy photograph.

NAVAL AIR FACILITY
Proposed Building Locations
Drawing No. P.N.A.B.-N1-109
December 15, 1943

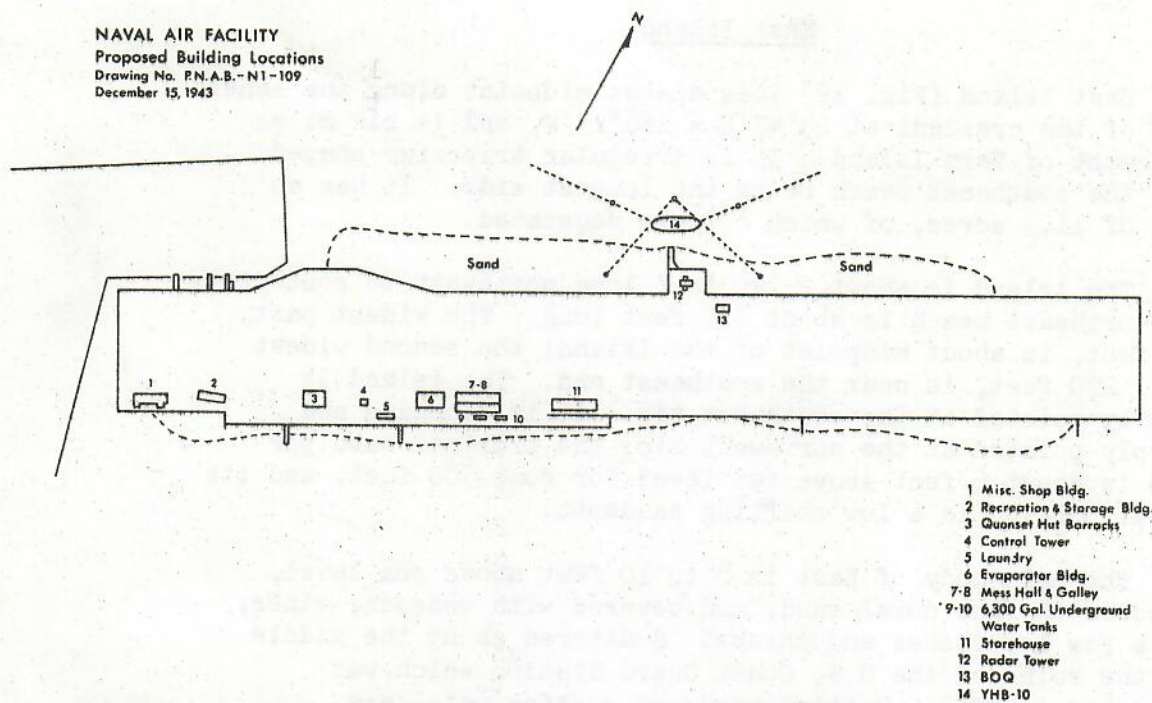


Figure 9. Tern Island Naval Air Facility, 15 December 1943.
Redrawn from official U. S. Navy blueprint map.

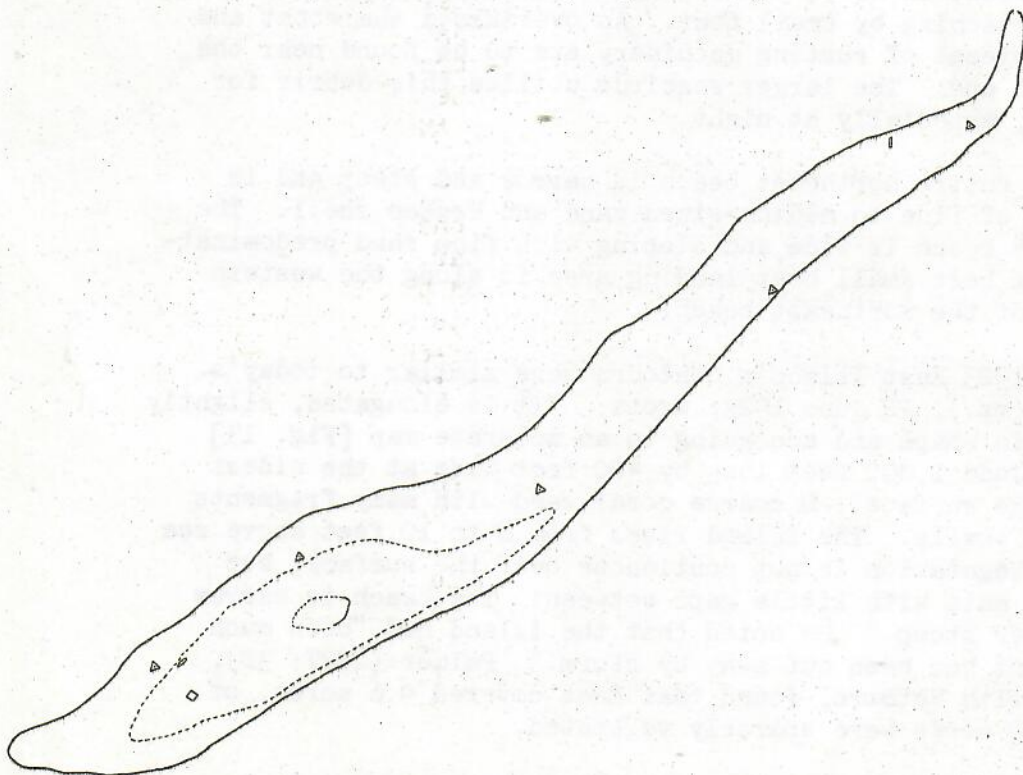


Figure 10. Map of Tern Island, 22-27 June 1923. Redrawn from
Tanager Expedition map by A. S. Chaney.

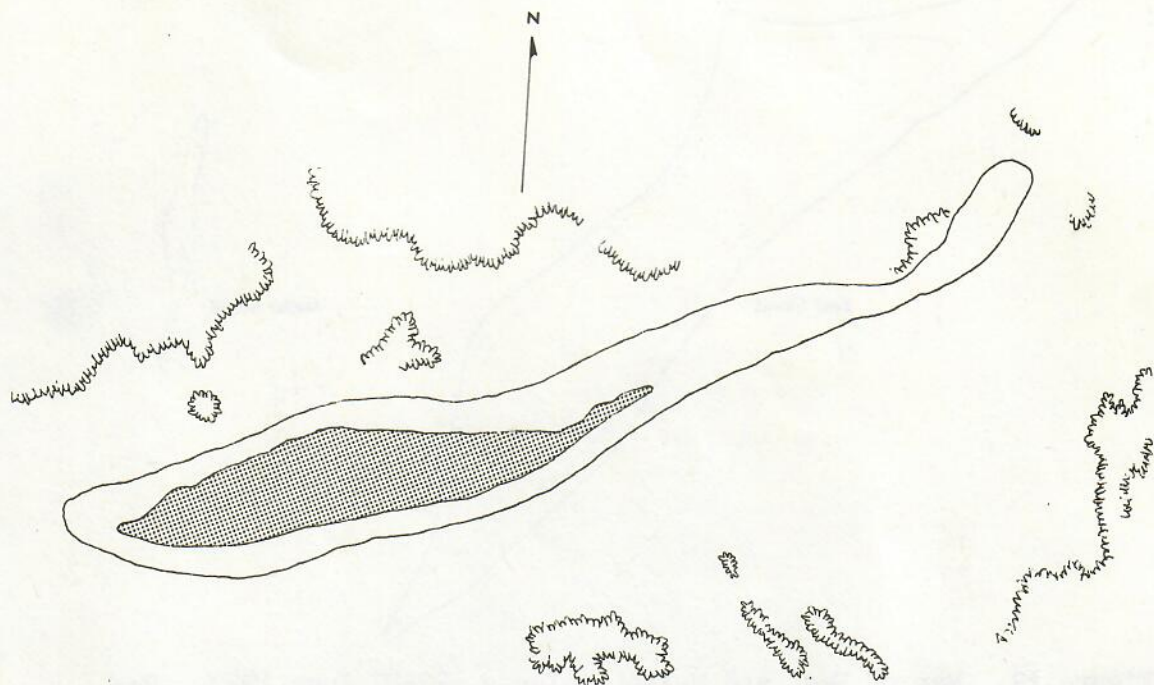


Figure 11. Tern Island, 24 June 1932. Redrawn from official U. S. Navy photograph.

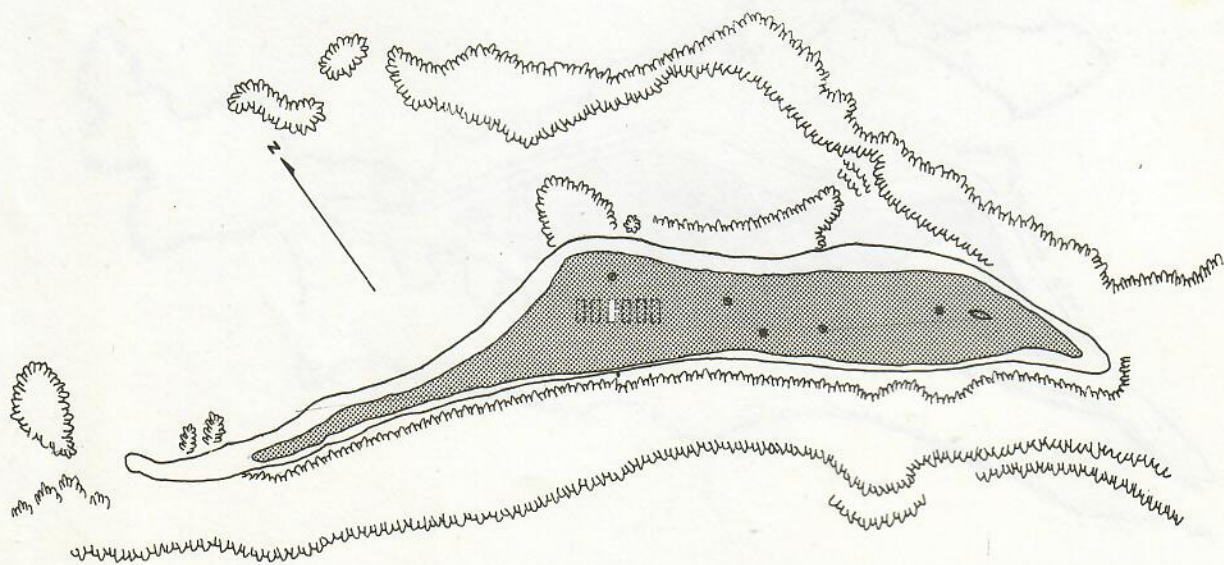


Figure 12. East Island, 10 January 1966. Redrawn from official U. S. Navy photograph.

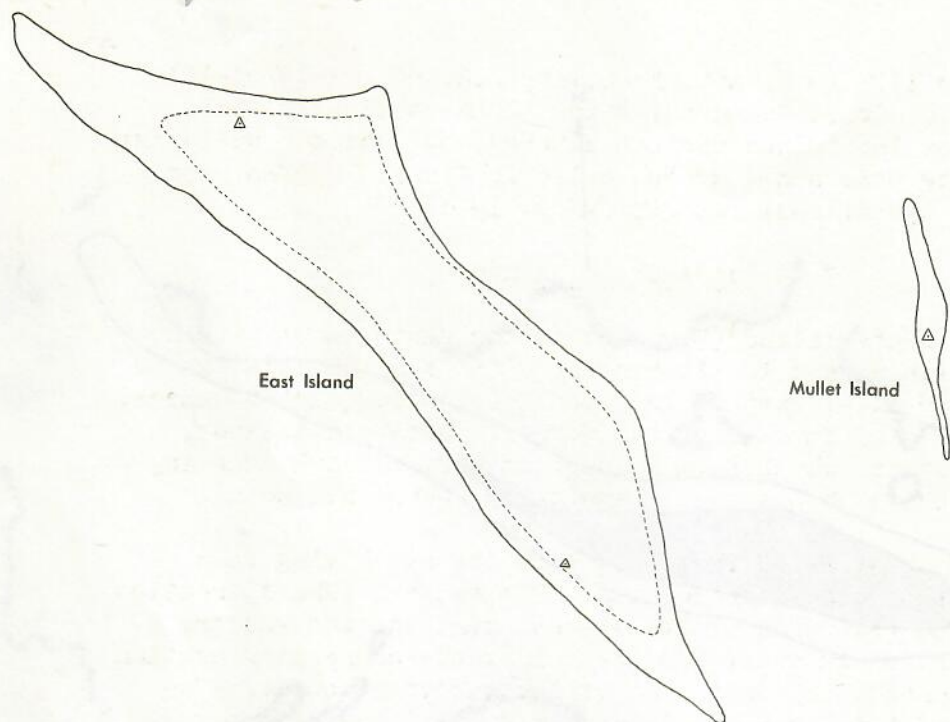


Figure 13. Map of East and Mullet Islands, 22-27 June 1923. Redrawn from Tanager Expedition map by A. S. Chaney.

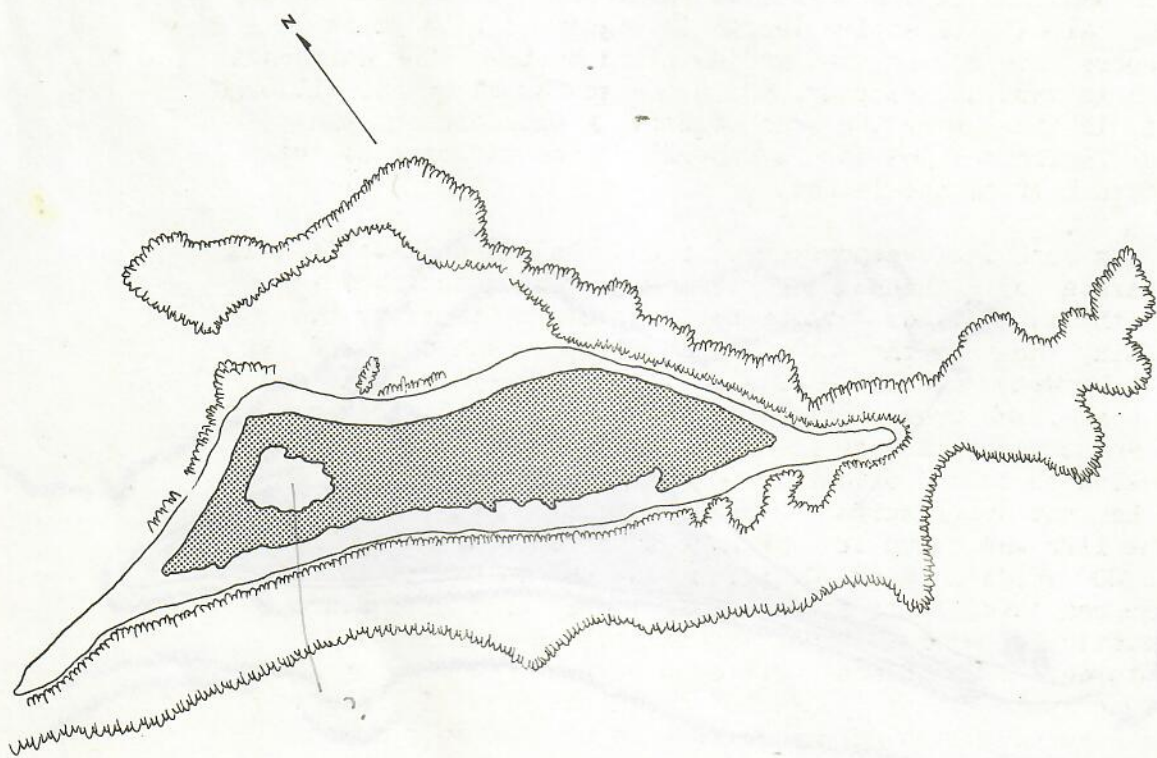
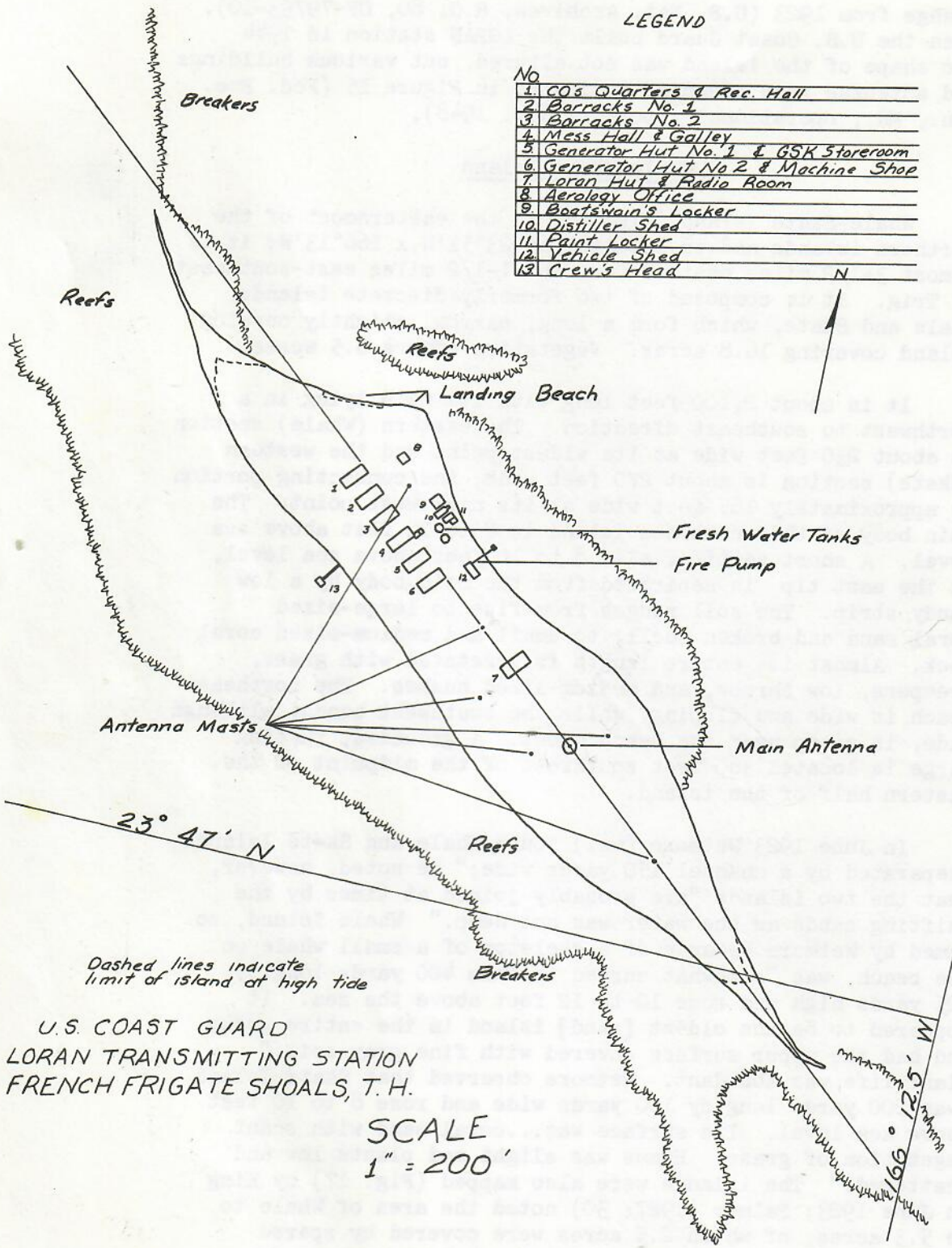


Figure 14. East Island, 11 November 1935. Redrawn from official U. S. Navy photograph.

LEGEND

No	Description
1	CO's Quarters & Rec. Hall
2	Barracks No. 1
3	Barracks No. 2
4	Mess Hall & Galley
5	Generator Hut No. 1 & GSK Storeroom
6	Generator Hut No. 2 & Machine Shop
7	Loran Hut & Radio Room
8	Aerology Office
9	Boatswain's Locker
10	Distiller Shed
11	Paint Locker
12	Vehicle Shed
13	Crew's Head

N



Dashed lines indicate limit of island at high tide

U.S. COAST GUARD
 LORAN TRANSMITTING STATION
 FRENCH FRIGATE SHOALS, T.H.

SCALE
 1" = 200'

Figure 15. Map of East Island, 1 November 1948. Redrawn from official U. S. Coast Guard Operational Data Report.

Do not include this caption

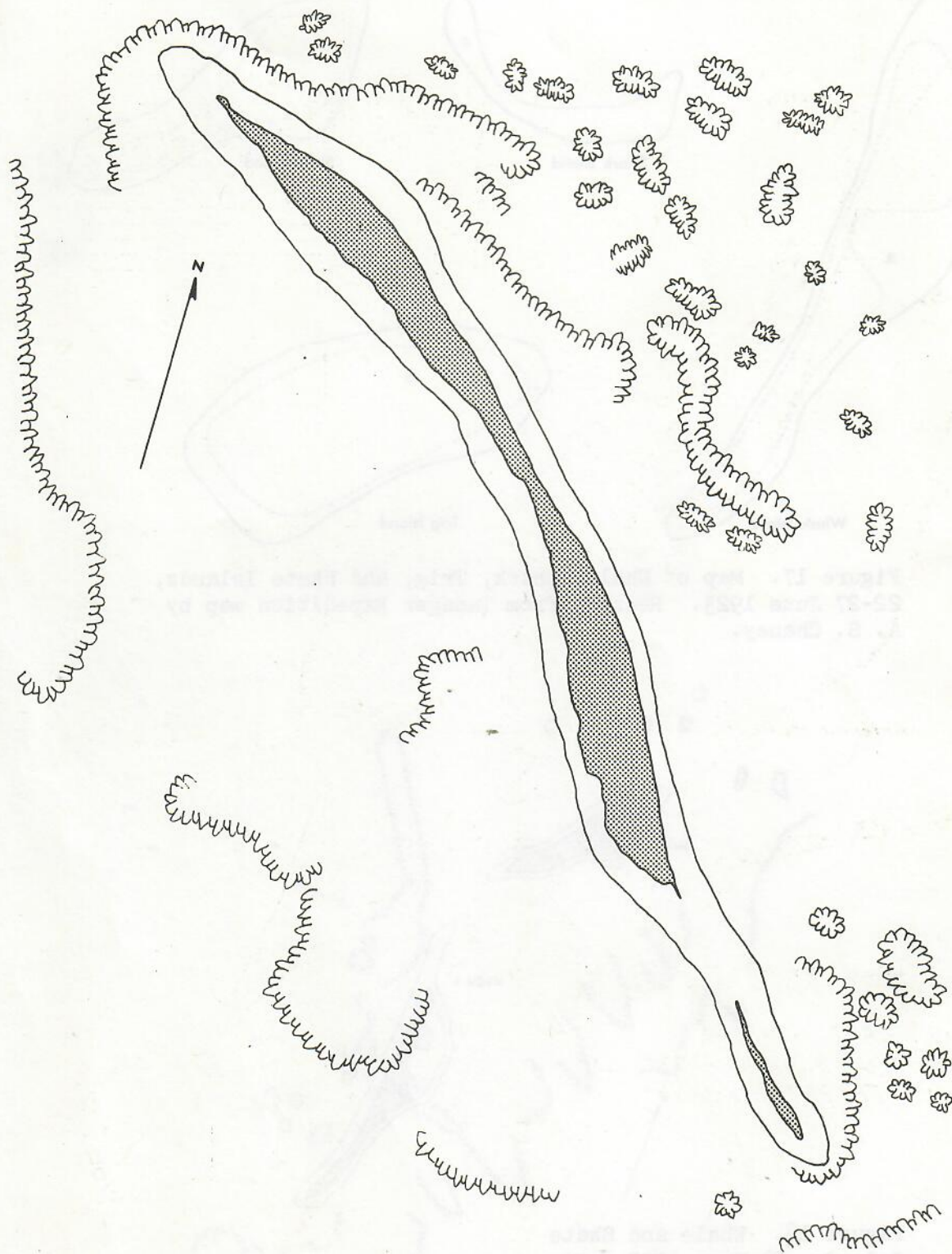


Figure 16. Whale-Skate Island, 10 January 1966. Redrawn from official U. S. Navy photograph.

Do not
include
this caption

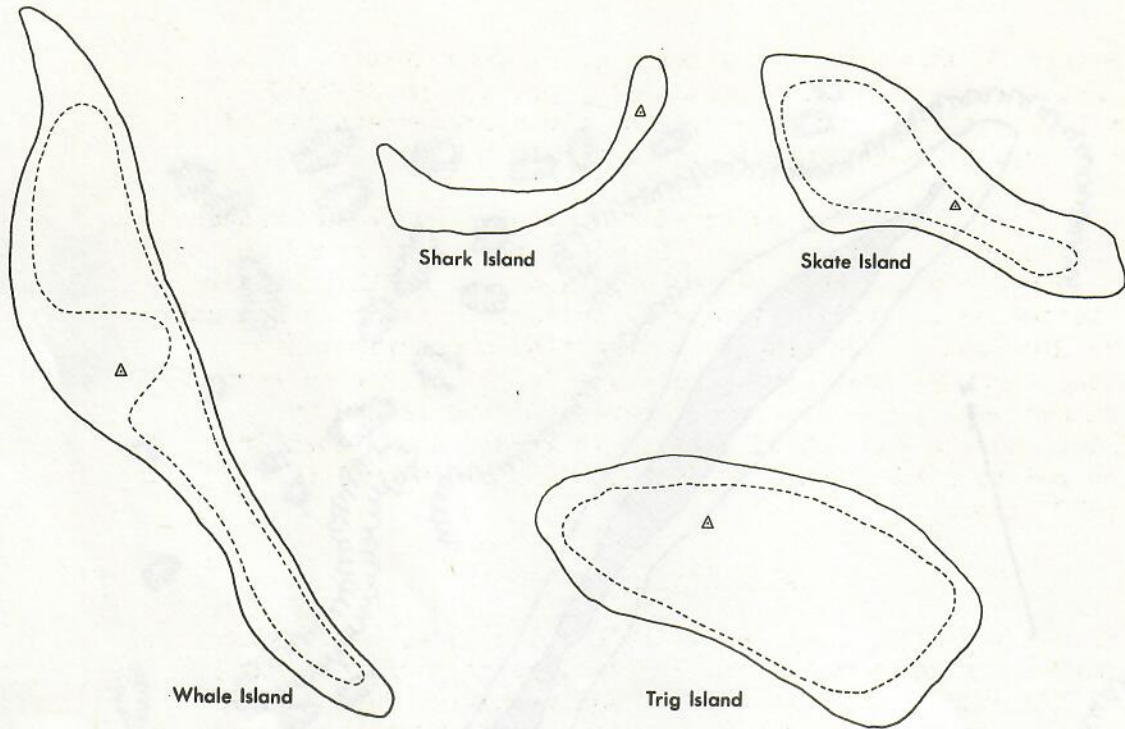


Figure 17. Map of Whale, Shark, Trig, and Skate Islands, 22-27 June 1923. Redrawn from Tanager Expedition map by A. S. Chaney.

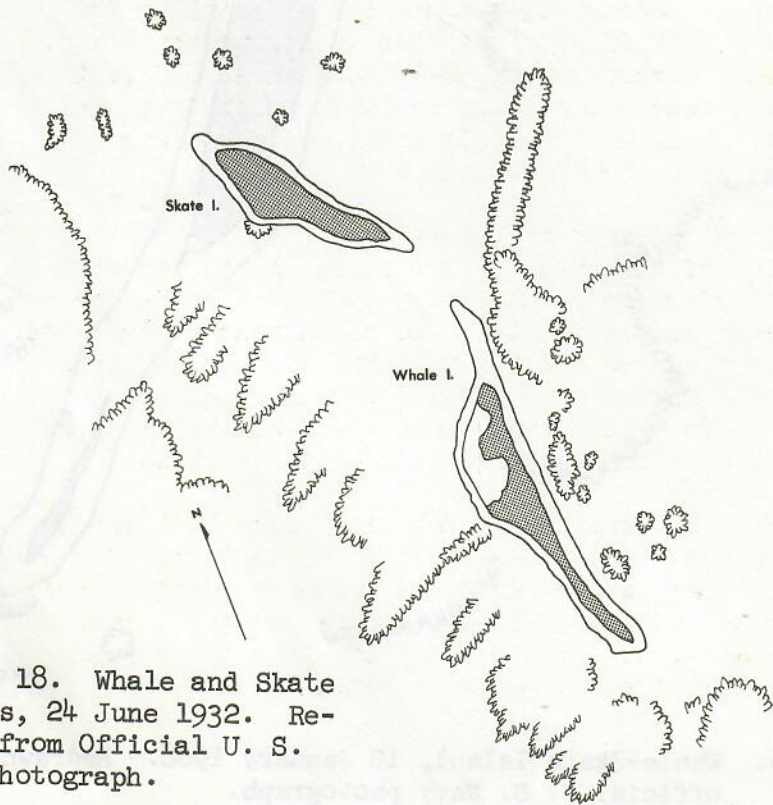


Figure 18. Whale and Skate Islands, 24 June 1932. Redrawn from Official U. S. Navy photograph.

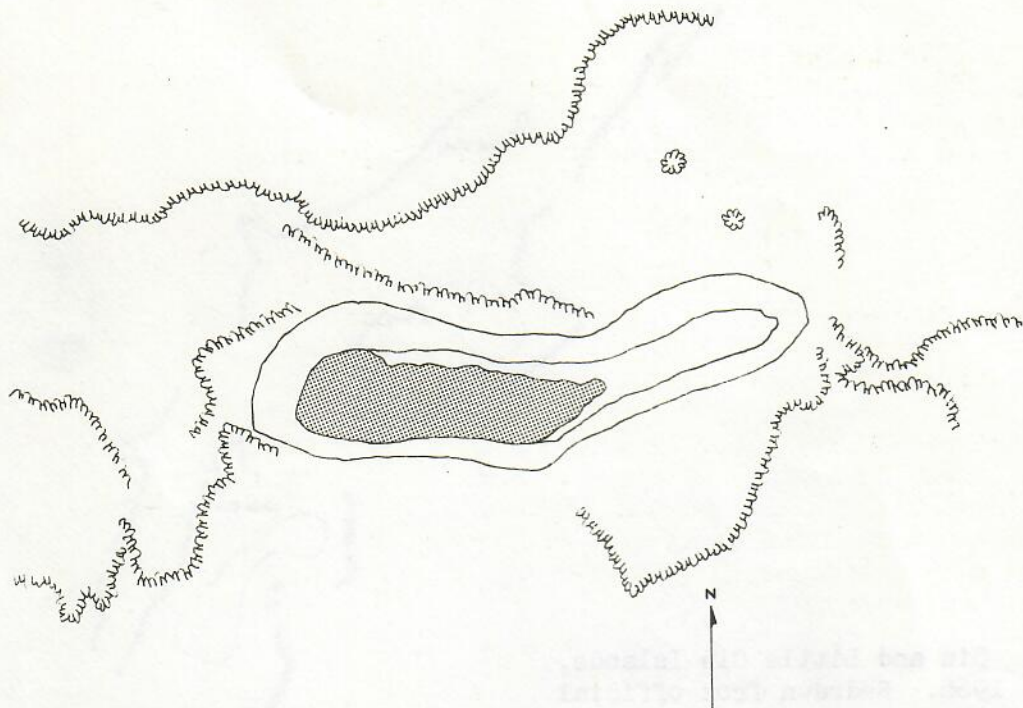


Figure 19. Trig Island, 10 January 1966. Redrawn from official U. S. Navy photograph.

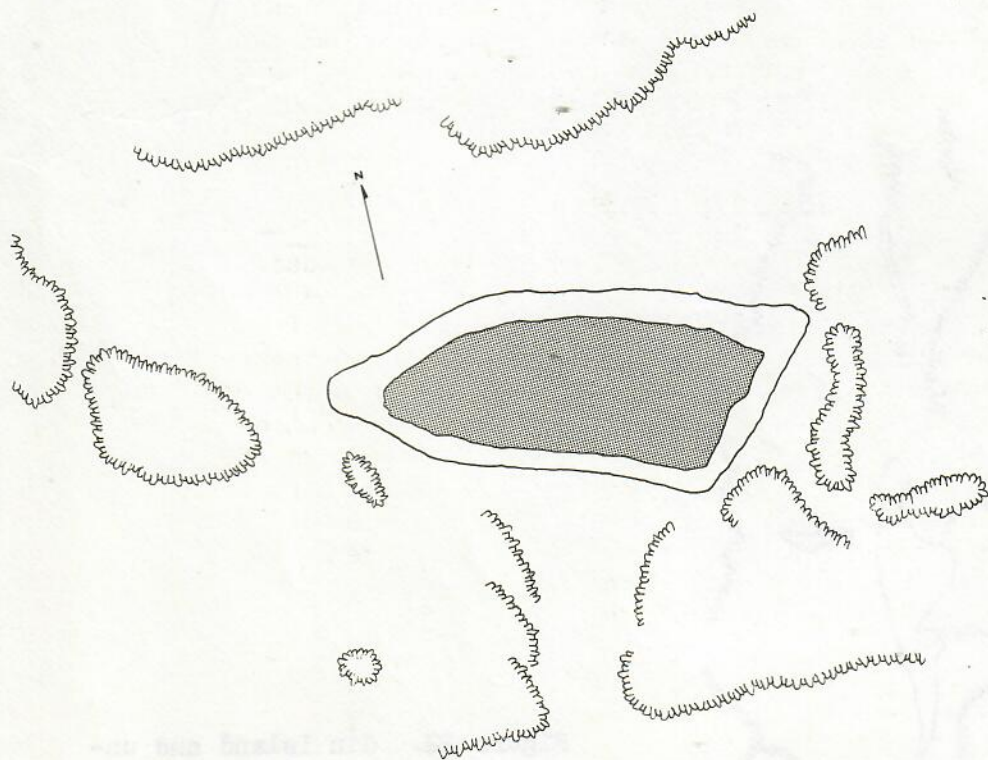


Figure 20. Trig Island, 24 June 1932. Redrawn from official U. S. Navy photograph.

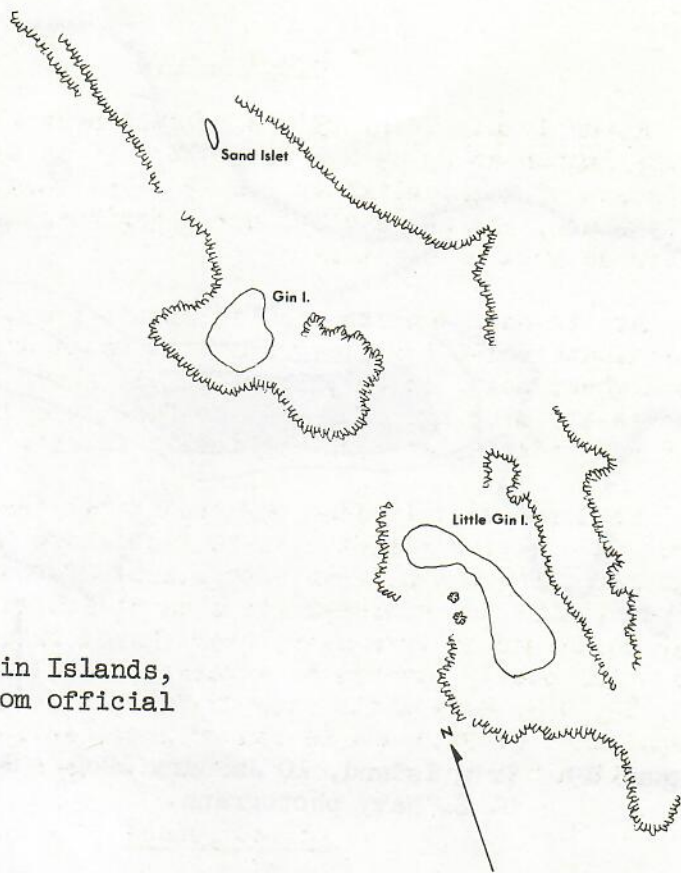


Figure 21. Gin and Little Gin Islands,
10 January 1966. Redrawn from official
U. S. Navy photograph.

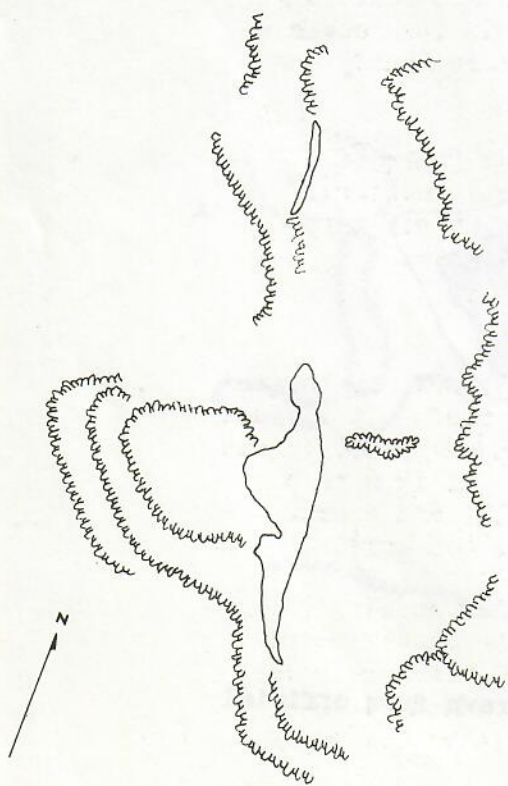


Figure 22. Gin Island and un-
named sandspit, 24 June 1932.
Redrawn from official U. S.
Navy photograph.

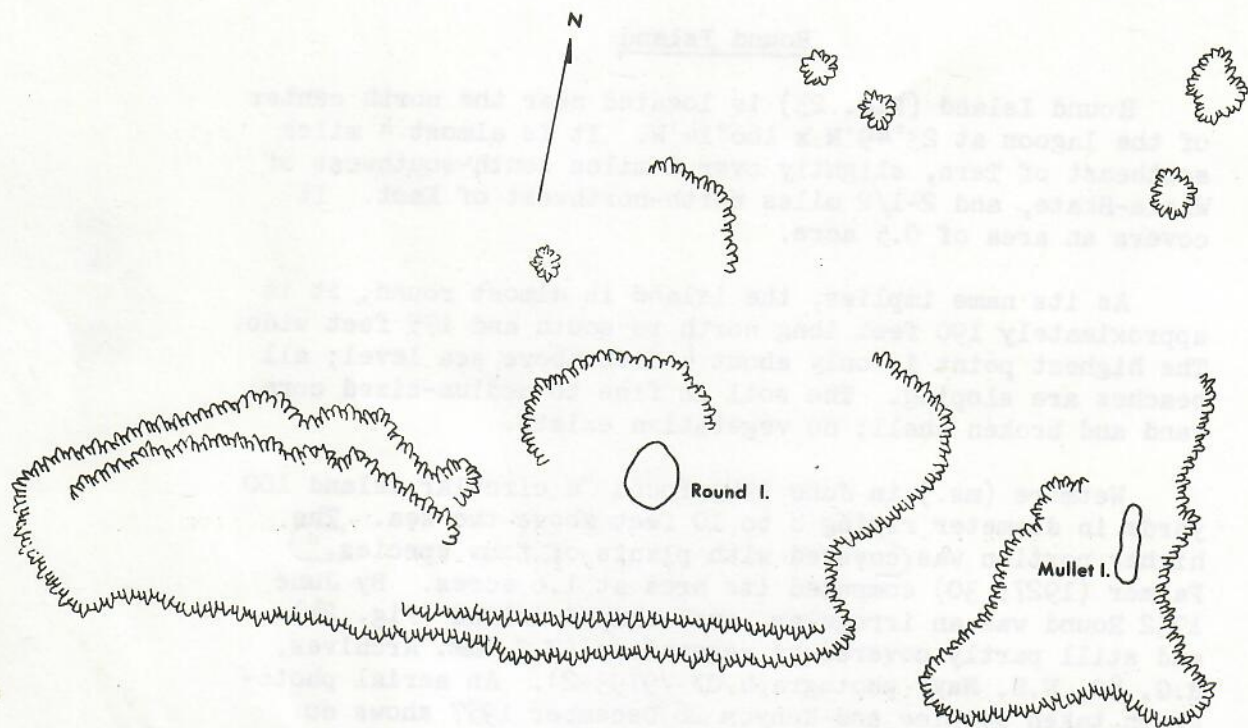


Figure 23. Round and Mullet Islands, 10 January 1966. Redrawn from official U. S. Navy photograph.

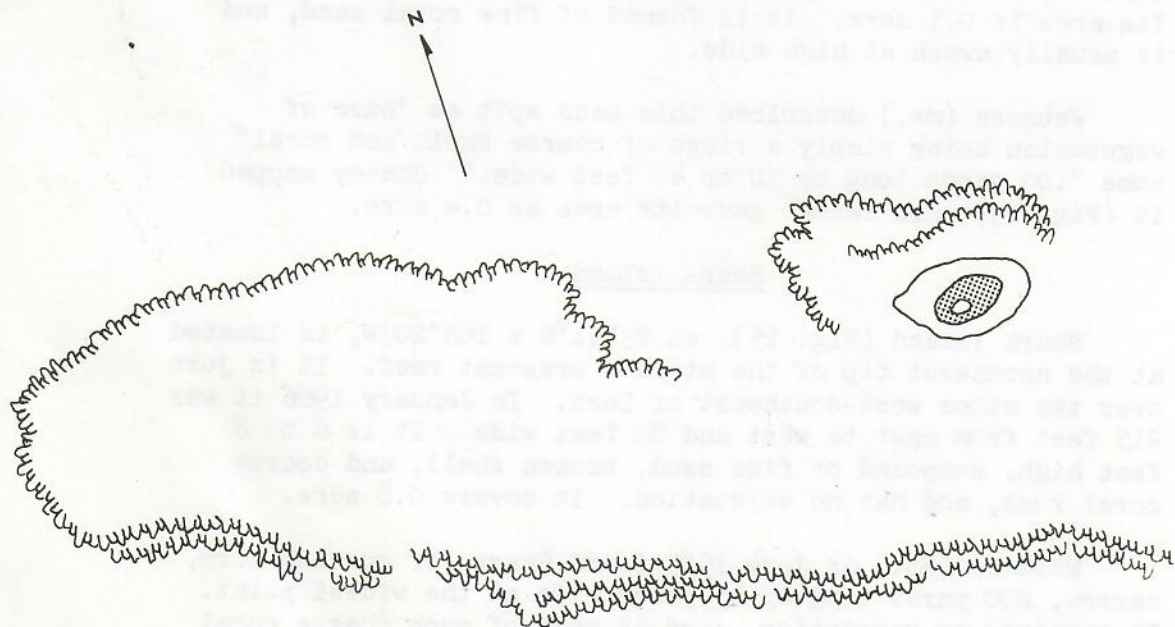


Figure 24. Round Island, 24 June 1932. Redrawn from official U. S. Nav, photograph.

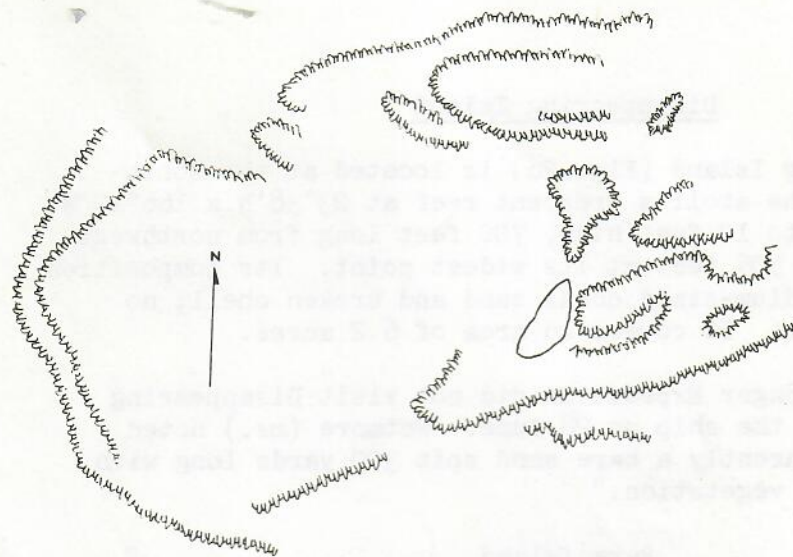
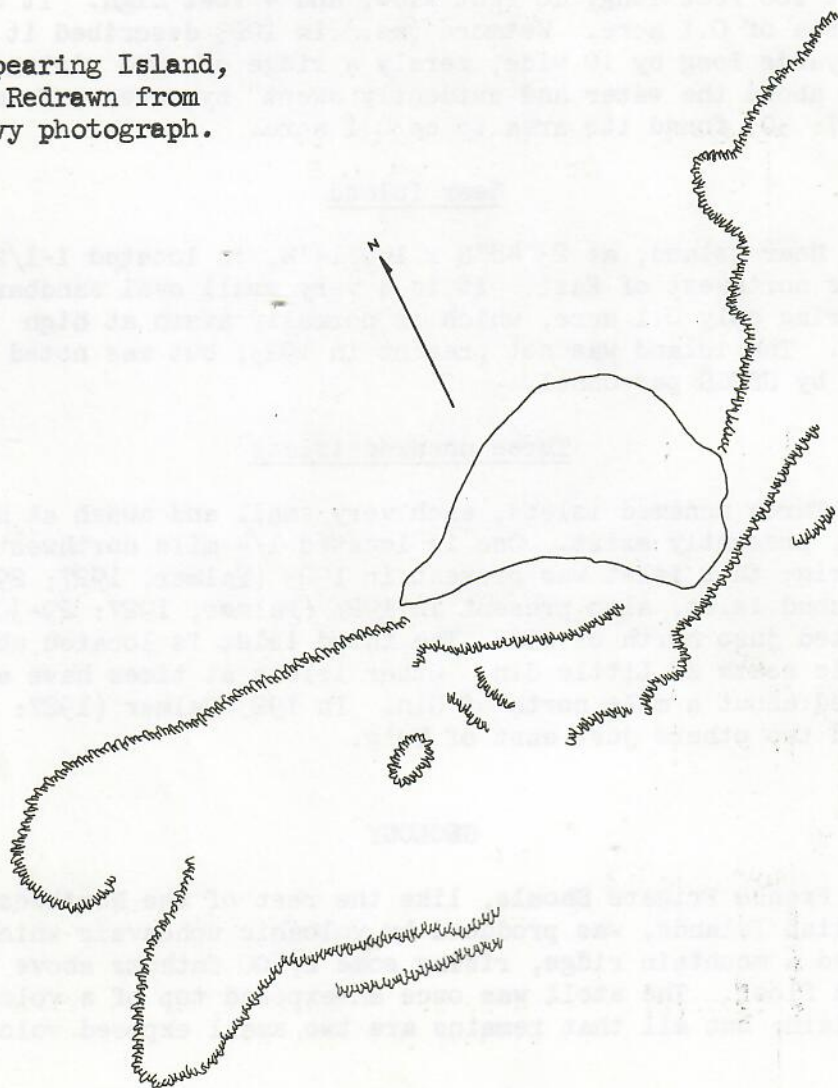


Figure 25. Shark Island, 10 January 1966. Redrawn from official U. S. Navy photograph.

Figure 26. Disappearing Island, 10 January 1966. Redrawn from official U. S. Navy photograph.



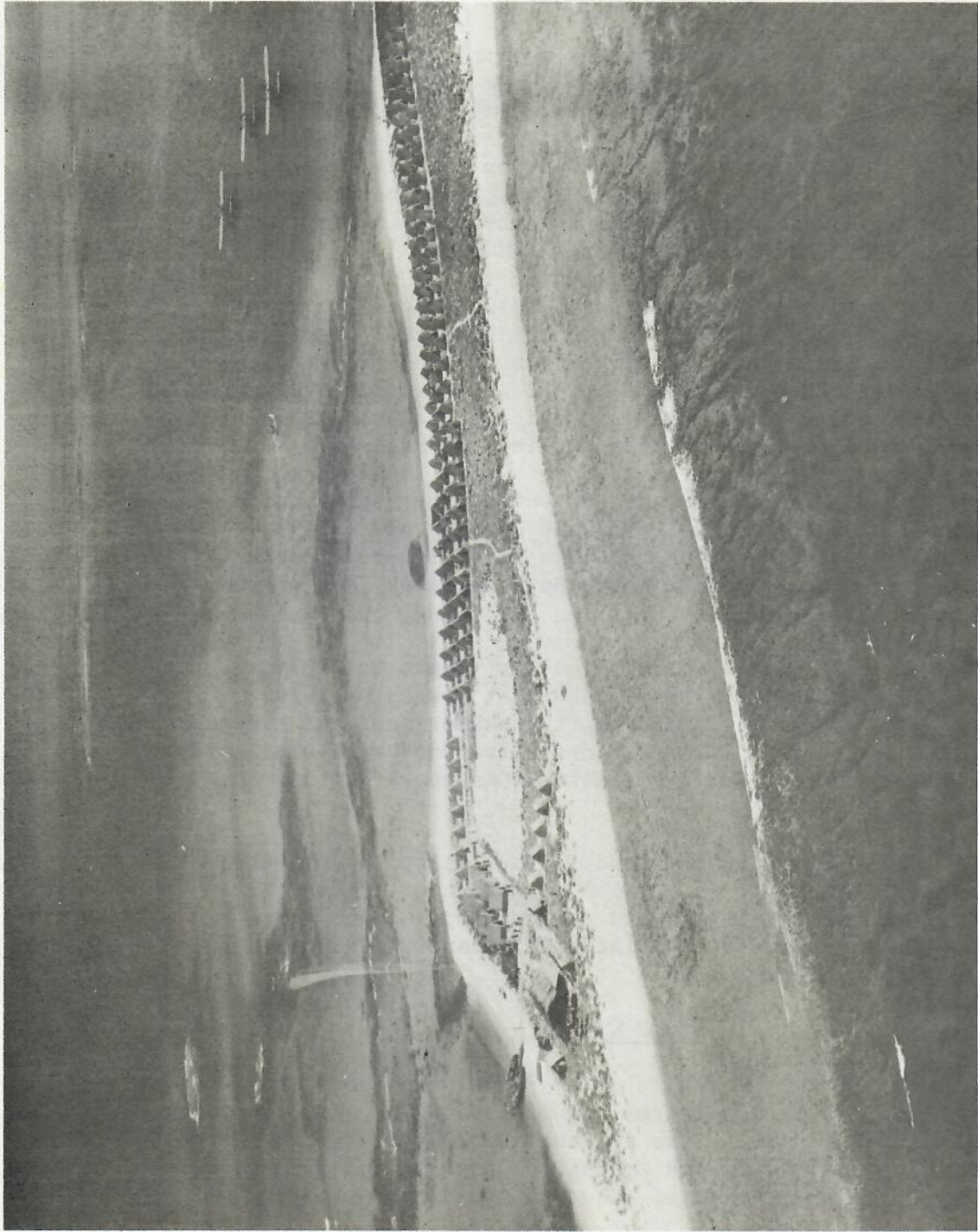


Figure 31. East Island "tent city" 11 November 1935. Official U. S. Navy photograph.

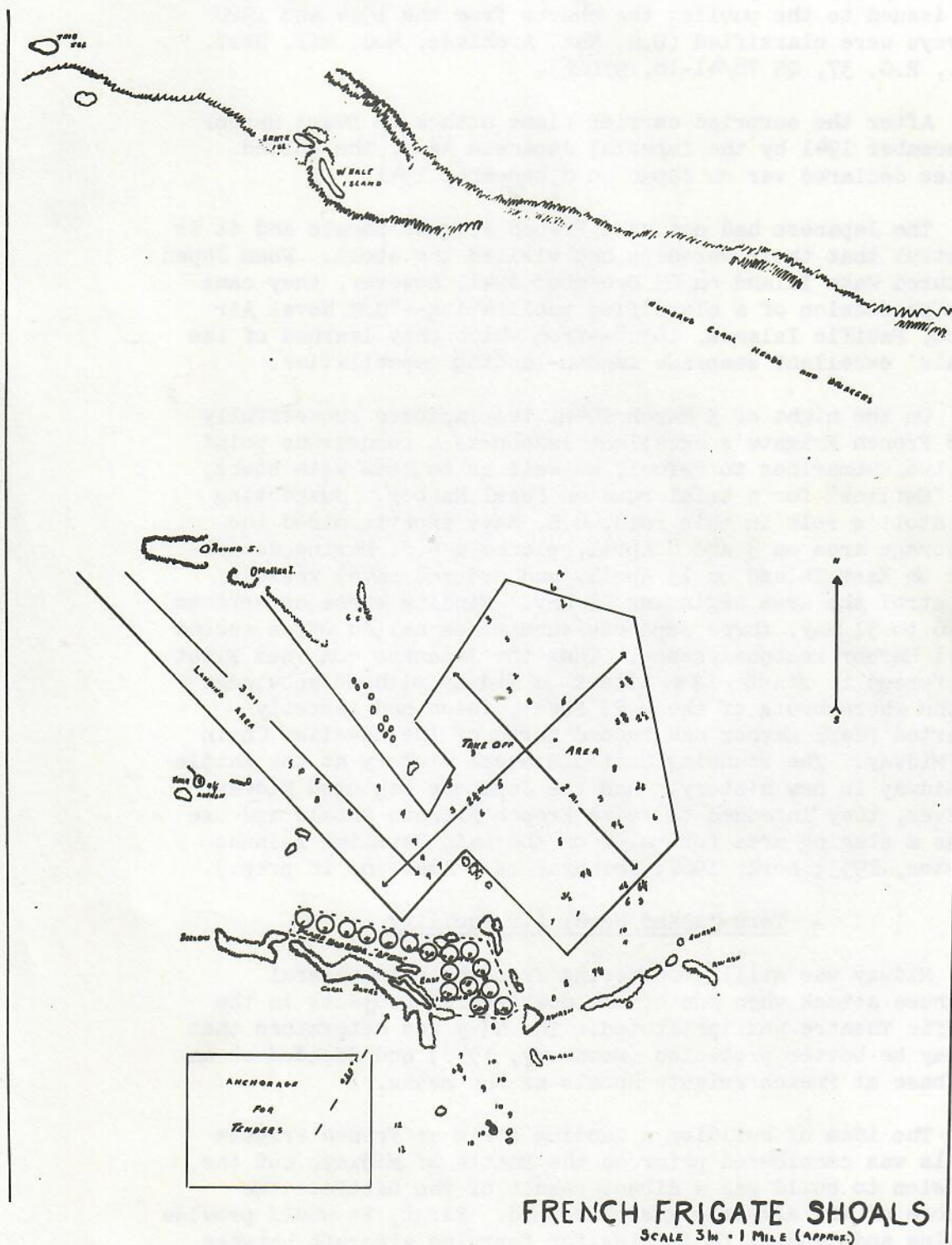


Figure 32. Map of East Island seaplane anchorage, 1 October, 1937.
Official U. S. Navy photograph.

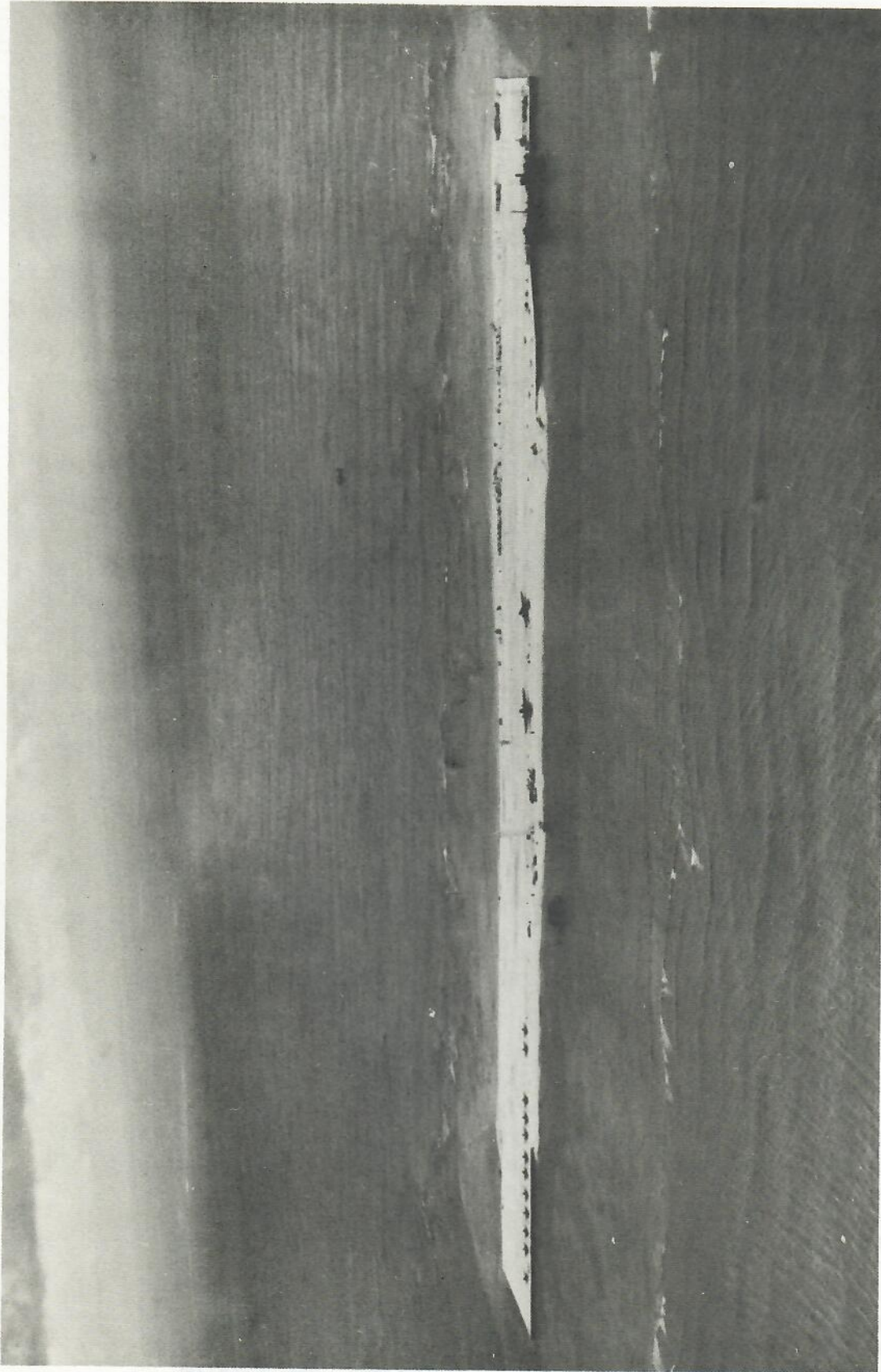


Figure 33. Newly constructed Tern Island Naval Air Facility, 9 September 1943.
Official U. S. Navy photograph.



Figure 34. Newly constructed East Island Coast Guard LORAN Station, 24 April 1945.
Official U. S. Navy photograph.

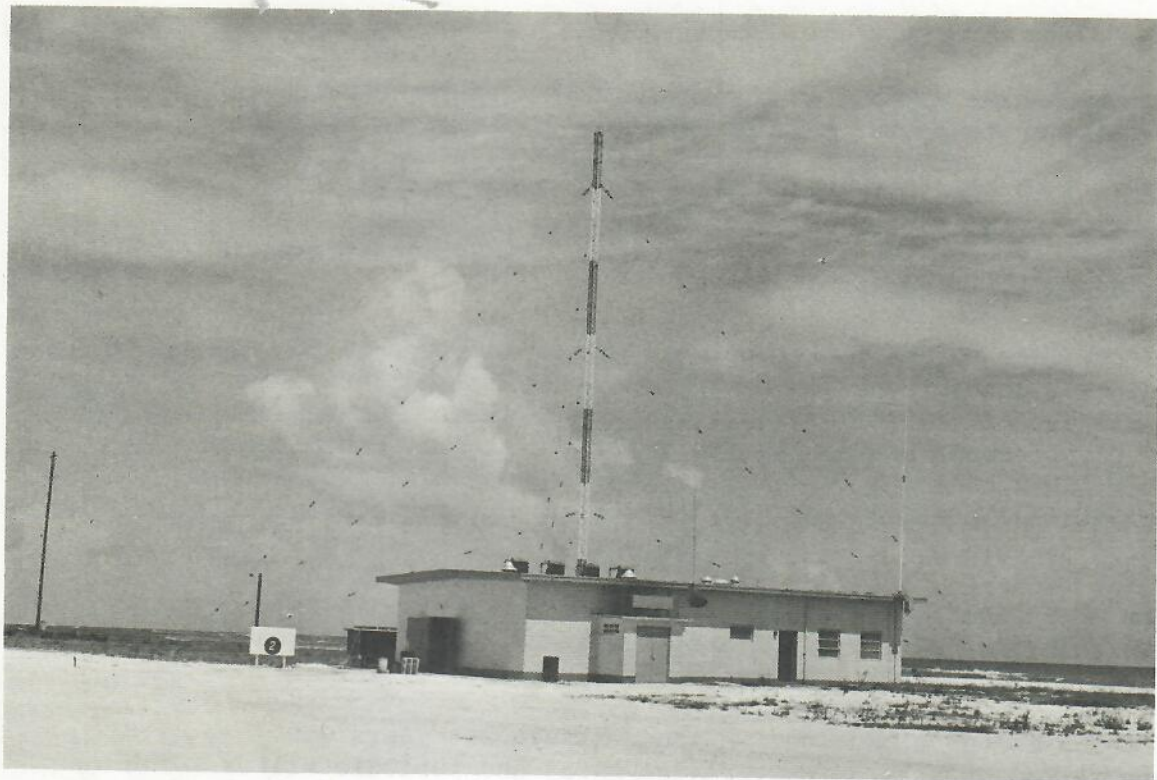


Figure 35. Tern Island Coast Guard LORAN and power building, 21 August 1965. POBSP photograph by A. B. Amerson, Jr.



Figure 36. Tern Island Coast Guard barracks, 21 August 1965. POBSP photograph by A. B. Amerson, Jr.

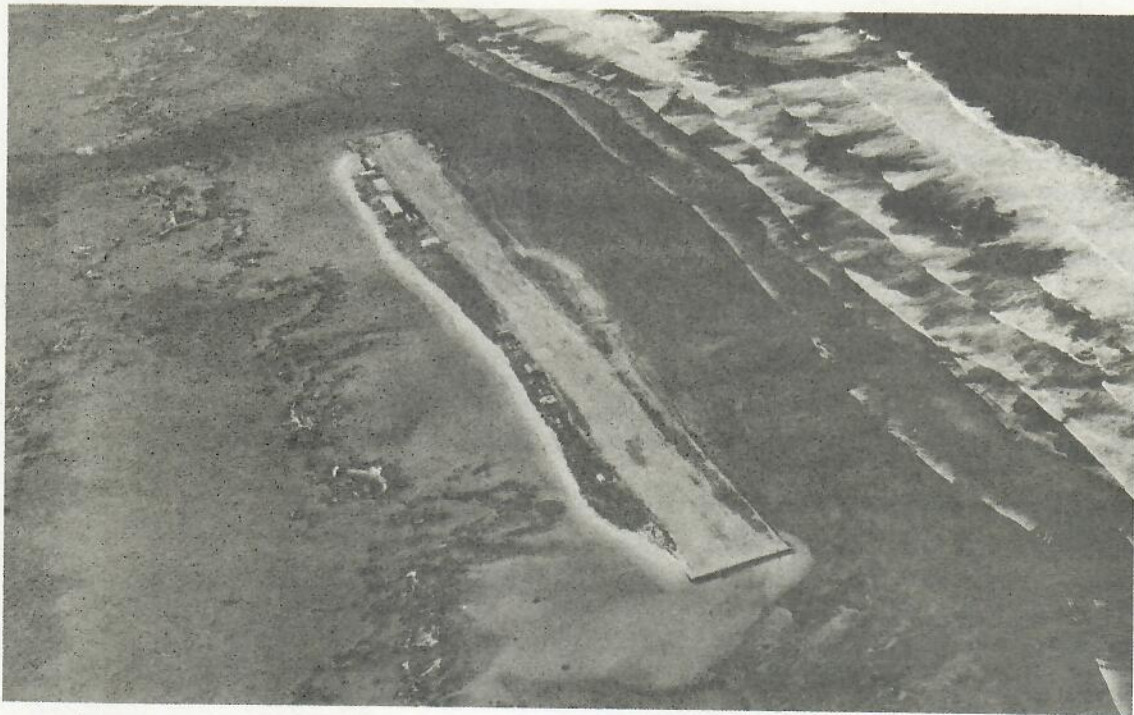


Figure 37. Aerial view of Tern Island, 11 December 1966, showing vegetation growing along both sides of the airstrip. Official U. S. Coast Guard photograph.



Figure 38. C. S. Judd planting Hau trees west end of Tern Island, 26 June 1923. B. P. Bishop Museum photograph by E. H. Bryan, Jr.

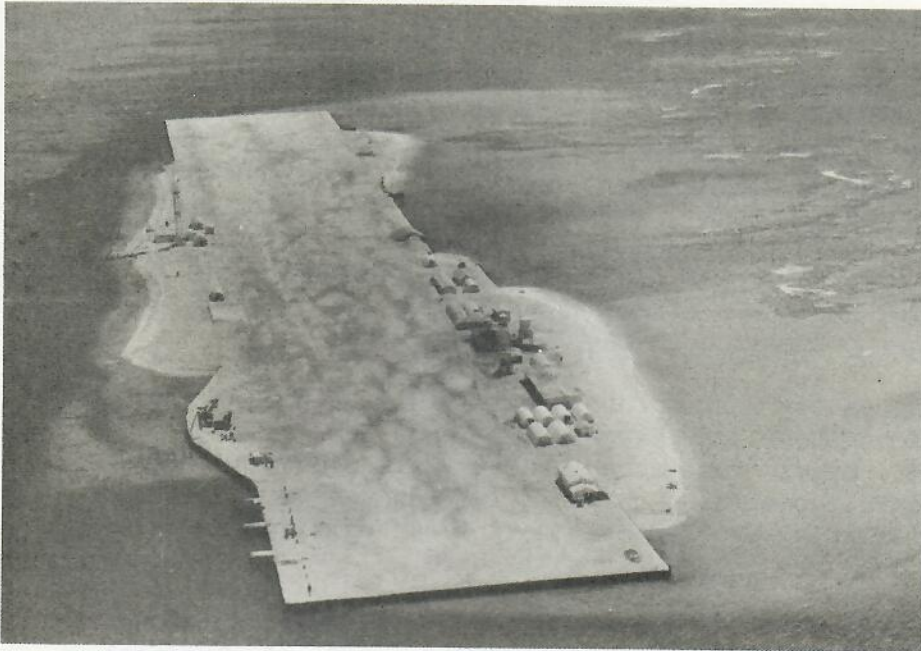


Figure 39. Abandoned Tern Island Naval Air Facility, 16 August 1949, showing its barren, white-coral expanse. Official U. S. Navy photograph.

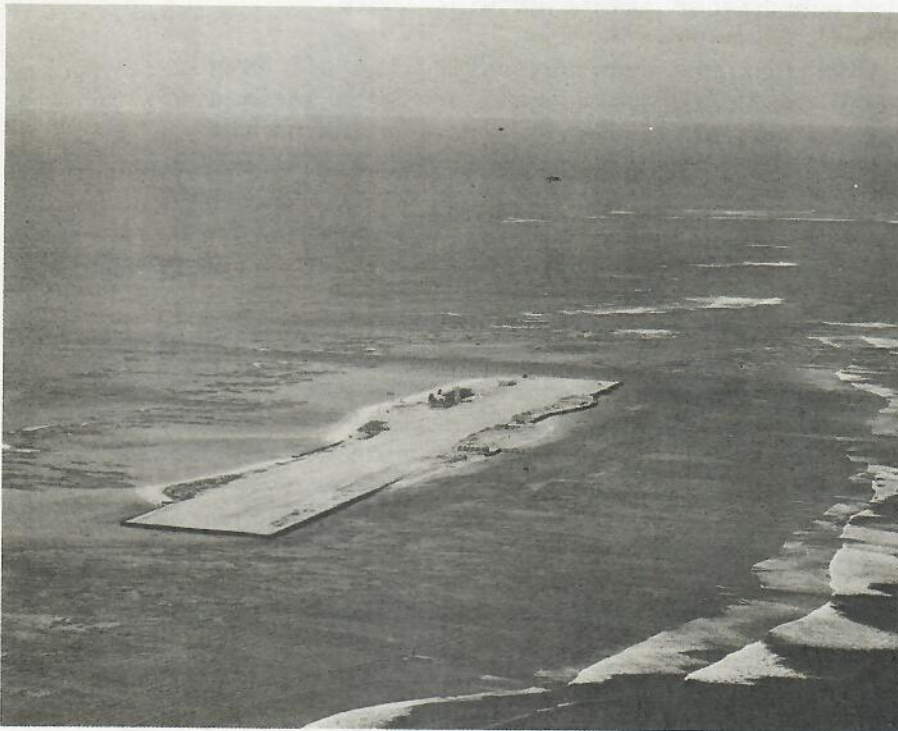


Figure 40. Aerial view of Tern Island, 3 January 1956, showing little vegetation along the northwest side of the air-strip, but two large vegetated areas on the eastern half of the southeast side. Official U. S. Coast Guard photograph.

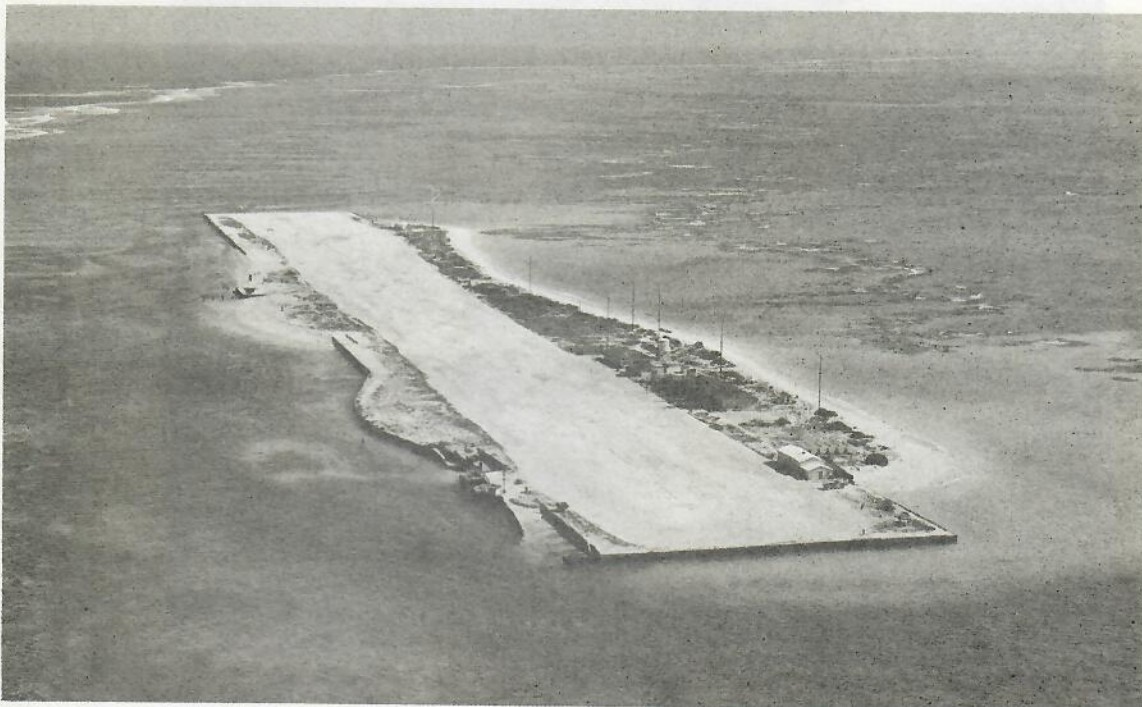


Figure 41. Aerial view of Tern Island's vegetation, 13 December 1961; Lamoureux (1961:7-10) found 22 plant species here on his September visit. Official U. S. Coast Guard photograph.

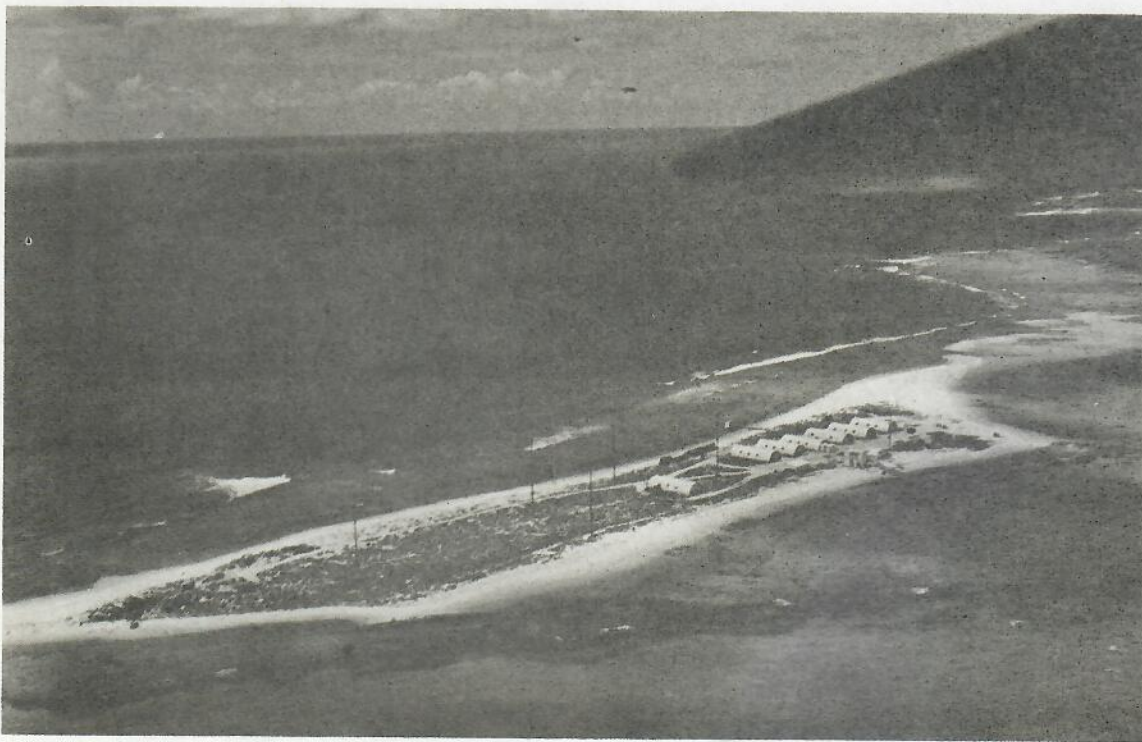


Figure 42. Aerial view of East Island Coast Guard LORAN Station, circa 1949, showing extent of vegetation. Official U. S. Coast Guard photograph.



Figure 43. East Island's vegetation, June 1962. Hawaiian Division of Fish and Game photograph by David B. Marshall.



Figure 44. West view from east end of Trig Island, 16 August 1965; dug-up area in foreground caused by turtles laying eggs; small Tournefortia plants on the left. POBSP photograph by A. B. Amerson, Jr.



Figure 45. Southwest view from east end of Trig Island, 3 July 1966; Tournefortia along south crest has grown two feet in less than a year (see Figure 44). POBSP photograph by A. B. Amerson, Jr.



Figure 46. Vegetation covers all of Whale-Skate Island except the beaches and a short sandy stretch near the far southeast end, June 1962. Hawaiian Division of Fish and Game photograph by David B. Marshall.



Figure 48. Green Sea Turtles sun-basking on the southeast lagoon beach of East Island, 19 June 1966. POBSP photograph by A. B. Amerson, Jr.



Figure 49. South seaward 50-foot edge of East Island utilized by Green Sea Turtles for nest pits, 19 June 1966. POBSP photograph by A. B. Amerson, Jr.



Figure 54. Nesting birds on east portion of Whale-Skate Island, 24 June 1966. POBSP photograph by A. B. Amerson, Jr.



Figure 55. Great Frigatebirds and Red-footed Boobies nesting on Tournefortia bush, Whale-Skate Island, 24 June 1966. POBSP photograph by A. B. Amerson, Jr.

No. 150

LIBRARY OF
GEORGE H. BALAZS

December 20, 1971

ATOLL RESEARCH BULLETIN

150. THE NATURAL HISTORY OF FRENCH FRIGATE SHOALS,
NORTHWESTERN HAWAIIAN ISLANDS¹

by A. Binion Amerson, Jr.



Issued by
THE SMITHSONIAN INSTITUTION
Washington, D.C., U.S.A.