

2002

2003

23-30 MAY 03

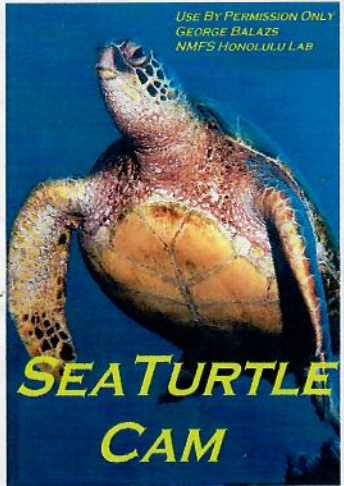
2004

21- SEPTEMBER 04

FFS No. (808)395-6409

BALAZS

2 of 2



EAST ISLAND

"Life on that islet of French Frigate Shoals delighted us all, especially the baby, who crawled and tottered and capsized, to the accompaniment of excited crowing, into the yielding sand. How I wish I could cruise again to that good place, once more to see that clear sky and enjoy that perfect weather! It would add ten years to my life to escape from the red tape that enmeshes us civilized men, to flee from police, tax-collectors, landlords, swindlers, innumerable parasites that suck our blood. None of them infested our world of islands. At French Frigate Shoals, praise God, sharks were fish, not humans."

Captain John Cameron  
Spring 1894

The Honolulu Advertiser

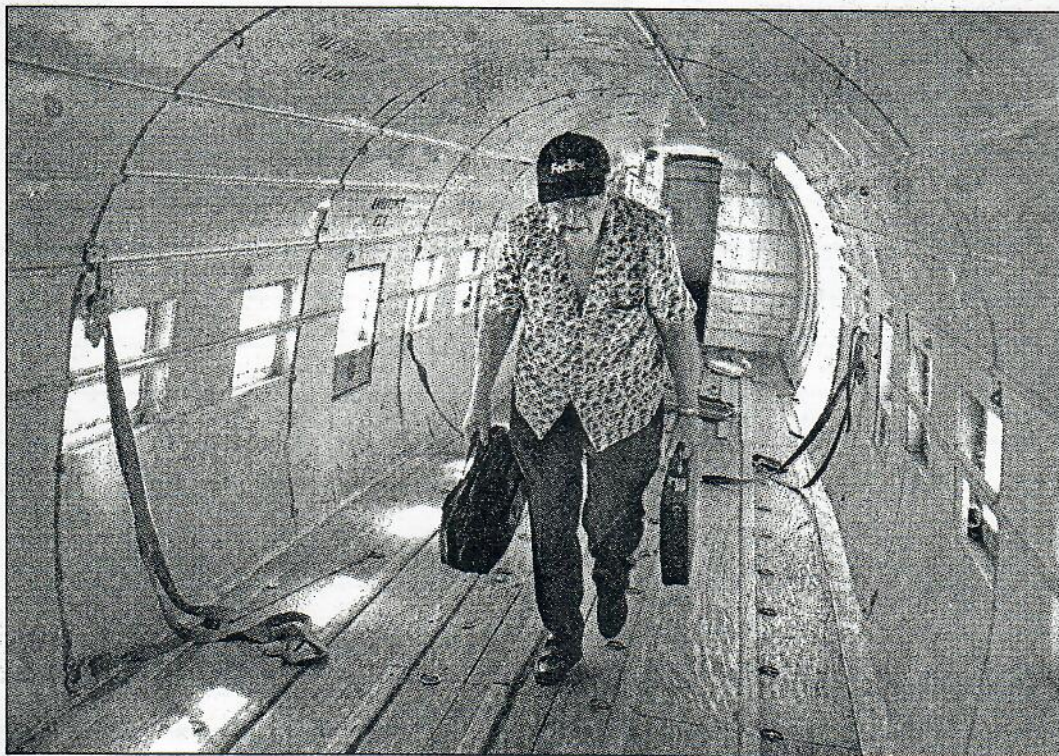
# ISLAND LIFE

SECTION C ☆

MONDAY • AUGUST 21, 2000

www.honoluluadvert

## Flying like a gooney bird



Photos by JEFF WIDENER • The Honolulu Advertiser

Chomping one of his ever-present cigars, Harry Clark, 75, heads for work aboard the vintage DC-3 transport plane that he flies most weekdays as chief pilot for Genavco Air Cargo Corp. After nearly six decades at the stick, the veteran World War II pilot says he has no intention of quitting — either smoking or flying.



JEFF WIDENER • The Honolulu Advertiser  
"Everything I know about flying I learned in a DC-3," said DC-3 pilot Stewart Kawakami, who until two years ago had never flown and was unaware of the DC-3 mystique. His respect for the plane has soared.

## Pilot no longer blind to vintage plane's mystique

By **Will Hoover**  
ADVERTISER STAFF WRITER

There's no doubt Stewart Kawakami has bragging rights. At 31, the Honolulu pilot's time behind the stick of a vintage DC-3, which has been called the "most beloved aircraft in history," matches that of some World War II fliers more than twice his age.

Compounding the irony is the fact that, until two years ago, Kawakami thought his dreams of becoming a pilot would never be more than that, even though that's all he'd wanted to be since he was a child.

"In high school I went through ROTC my freshman and sophomore years," he said. "The military seemed like the way to become a pilot."

Then came the big hurt: Kawakami learned he is colorblind. "I knew right then that there was no chance I'd ever be a pilot," he said. "So, I just went on with my life. I graduated from high school. Got my B.A."

Kawakami taught Hawaiian Studies and pursued his second great passion, music. In 1997 he and two other Kamehameha School grads formed Pal'ea, a guitar and bass trio.

Still, he lamented his fate. Finally, a pilot friend insisted that Kawakami get his eyes re-tested.

"He told me colorblindness has different levels of severity," said

Kawakami.

Kawakami took a Federal Aviation Administration eye test and was told his ailment was so minor it wouldn't prevent him from becoming a civilian pilot. Kawakami's friend introduced the would-be flier to colleagues at Genavco Air Cargo Corporation in Honolulu, which owns a fleet of two 1942 DC-3s.

That night Kawakami got a call from the company offering to train him for a job.

"The first time I was ever in a cockpit was in a DC-3," he said. "I had no idea there was so much respect and nostalgia surrounding this plane. I remember looking at the control panel and thinking, 'This is horrible! My truck has better instrumentation than this.'"

He began to get an inkling of the DC-3 mystique after he'd learned to fly.

"I'd occasionally talk to old-time captains who would come in," said Genavco first officer Kawakami. "I could tell by their reaction there must be something special about it. Then, you'd see DC-3s in commercials, TV shows and documentaries. And I thought, 'Wow!'"

His own respect for the aircraft has soared. With more than 1,000 hours of flying time under his belt, Kawakami says he still can't believe his luck in ending up a guitarist playing DC-3 pilot.

"I get to do the two things I enjoy most, and get paid for it," he said.

PHOTO BY JEFF WIDENER

# Flying: DC-3s were WWII workhorses

FROM PAGE C1

little longer, we'd have paid them to take it away," said Clark, who got \$10,000 for a DC-3 skeleton.

In 1941, when he was 16, Clark smoked his first cigar. The same year he got his pilot's license. Two years later, he was an Army Air Force pilot in North Africa. After the war he continued smoking cigars and flying planes, as a pilot for the king of Saudi Arabia, for TWA, for Iranian Airlines, and for half a dozen other outfits. All told, he has logged 28,000 hours of flying, and smoking, time.

"I smoke every time I fly," he said. "When they started cracking down on smoking in planes, I formed my own airline."

Clark was making his own rules before the crackdown. He started Genavco in 1970, flying Curtiss C-46 Commandos. Too big for inter-island flying, he says. So he switched to DC-3s.

"The DC-3 is the ideal airplane for inter-island transport because of its low operation costs," he explained. "It's a tricky little devil to fly. Whichever way the wind blows is the way it wants to go."

But you can buy a DC-3 for a quarter-million ("that's cheap"); they're safe, they're rugged and they can haul 7,500 pounds of bulky cargo, no sweat.

Says Genavco captain and director of maintenance Jim Petrides, "Where are you going to stick a 30-foot pipe or a 4,000-pound generator? ... We never know what we're getting. We get livestock, heavy

equipment, goats ..."

Petrides, 36, fills the Indiana Jones role for the company. He has been flying DC-3s for Genavco since 1996, even though he could be making more money flying elsewhere. But elsewhere wouldn't give him the chance to pilot the genuine classic that he calls "The Harley-Davidson of the skies."

It's not a perfect aircraft, he says, as he drops into the pilot's seat and checks out an instrument panel that's straight out of every black-and-white WWII flick ever made. It's noisy, the cockpit is chilly, the plane is temperamental, and it's perpetually shaking and rattling.

"The windshields always leak," said Petrides, flicking a strip of gray metal over the dials. "Everybody has installed this little rain guard over the instrument panel. I thought it was just something Harry put in. But every DC-3 has one, because every DC-3 leaks. These escape hatches always leak, too."

"But everything works."

The thing is, flying a DC-3 is a labor of love, says Petrides. It's an honor. It's romantic. "You don't make a lot of money doing this," he repeated. "But I'm going to continue flying these things."

So will Harry Clark. Why? Because, as Harry puts it, "the DC-3 is the aircraft." It changed commercial aviation. It helped win the war. It always comes home.

How long will he continue flying "gooney birds"?

"Until I get up and read my own obit," Clark said with a loud and smoky laugh.

# Two DC-3s operating over Hawai'i

By **Will Hoover**

ADVERTISER STAFF WRITER

There was a time when the skies over Hawai'i were filled with "gooney birds" — the legendary DC-3 aircraft, celebrating its 65th anniversary this year.

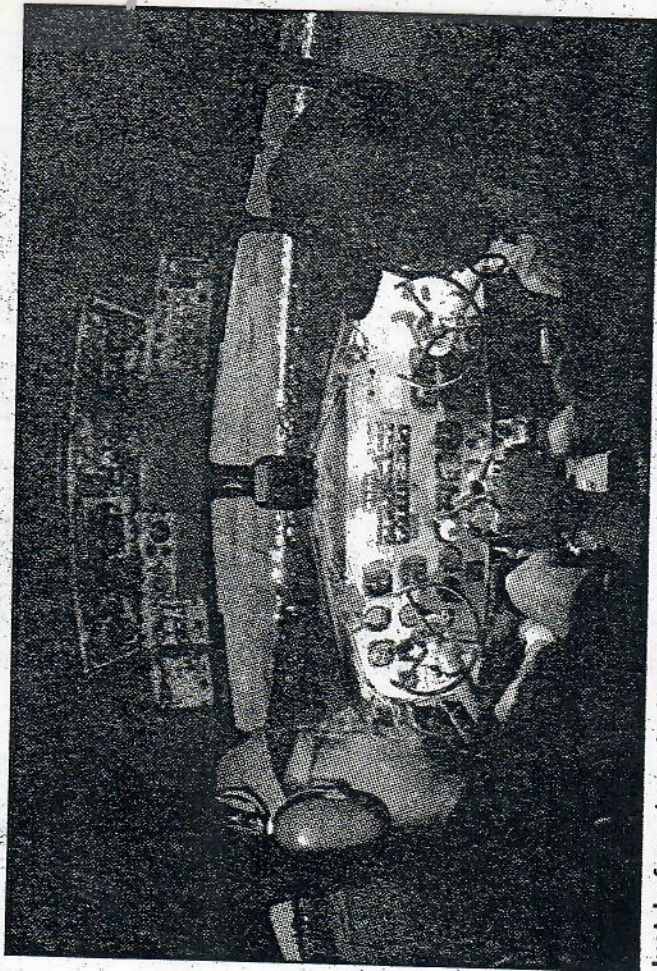
Considering that every "gooney bird" ever built was made in the first half of the 20th century, it's amazing that any are still bouncing around the Islands.

But there are a pair of them left here, both owned by the Genavco Air Cargo Corp. of Honolulu, located at the tail end of Lagoon Drive.

"Those are the only two DC-3s flying in Hawai'i," said Michael Willett, aviation buff and instructor for Honolulu Community College's Aero Maintenance Program. "There are other old planes flying, but the DC-3s are still workhorses, earning their keep. The things were built to last."

Fewer than a thousand DC-3s were made for commercial use. When America entered World War II in 1941, all manufacture of the plane switched to military use. Designated C-47s (U.S. Army), R4Ds (U.S. Navy) and Dakotas (United Kingdom and other Allied countries), more than 10,000 DC-3s were made to transport Allied troops and cargo.

After the war, thousands were converted to commercial passenger and cargo use, dominating flight around the world,



Just before dawn in Honolulu, Capt. Jim Petrides, 36, and co-pilot Stewart Kawakami, 31, prepare for takeoff in a DC-3 straight out of yesterday. The plane is one of hundreds of DC-3 workhorses still in operation around the world.

including inter-island travel in Hawai'i. Both of the Islands' surviving DC-3s served in the war. So did their owner, Genavco chief pilot Harry Clark.

"We had three DC-3s, actually," said Clark, 75, as he sat in his cluttered office and stoked up a hand-rolled Papayo cigar

from the Dominican Republic. "We sold one to Disney for the movie 'Pearl Harbor' and they blew it up." (It was the one they kept around for spare parts.)

"If the Disney people had bargained a

See FLYING, C5

Print version - © COPYRIGHT 2003 The Hon...wspaper, a division of Gannett Co. Inc. <http://the.honoluluadvertiser.com/article/2003/Feb/22/ln/ln35a.html?print=c>



Posted on: Saturday, February 22, 2003

## Harry Clark Jr., WWII pilot, Genavco Air Cargo owner, dead at 77

Advertiser Staff

Harry J. Clark Jr., a pilot in World War II and owner of Genavco Air Cargo, died Feb. 14. He was 77.

Clark was born in Connecticut and got his pilot's license in 1941 when he was 16. Two years later he joined the Army Air Corps as a pilot in North Africa.

After the war, the cigar-smoking pilot flew for the king of Saudi Arabia, TWA, Iranian Airlines and several other companies. When the airline industry began to clamp down on smoking in planes, Clark formed his own airline in 1970.

At first, Genavco flew Curtiss C-46 Commando aircraft. But Clark soon found out that the aircraft was too big for interisland flights so he switched to DC-3s, known as "gooney birds." Clark's Lagoon Drive company owned the only two DC-3s left in the Islands.

Clark is survived by wife, Luchy; son, Chris; two grandchildren; two great-grandchildren; brothers Arthur and James; sisters, Catherine Marron, Dorothy Yashinco, Betty Ciresi, Elizabeth Evers, June Summa and Gail Caggiano.

Service 2 p.m Tuesday at Scottish Rite Cathedral.

[Back](#)

© COPYRIGHT 2003 The Honolulu Advertiser, a division of Gannett Co. Inc.  
All materials contained on this site are protected by United States copyright law and may not be reproduced, distributed, transmitted, displayed, published or broadcast without the prior written permission of The Honolulu Advertiser. You may not alter or remove any trademark, copyright or other notice from copies of the content.

# Aloha, Harry!



From The South Ramp --Hank Bruckner

Article from the April 2003 edition of the GACH newsletter

--Hank Bruckner

## Aloha, Harry

I wonder how many of us share a similar, brilliant and indelible memory of a first flight with Harry Clark in the DC-3. Mine, as did most, started before dawn, loading stuff up hill in the back of the -3, culminating in a takeoff just as the sun was rising over Molokai. The day was sparklingly clear and smooth. Harry had the left window open to vent his cigar smoke outside (worked just fine). The combination of the glorious dawn and the throaty rumble of the big radial just behind me to the right produced an unforgettable sense that all was right with the world. Hawaii's aviation legend Harry Clark went west on February 14th, just shy of his 78th birthday.

Harry was one of those rare individuals who not only embraced aviation, but helped as many people as he could to get into flying—flying as it used to be (and, some would say, was meant to be). There are a lot of pilots in a lot of cockpits who cut their teeth flying with Harry and GENAVCO. Harry was a staunch supporter of General Aviation (and GACH), as evidenced by the name of his company.

Harry had a well-oiled and copious sense of humor. I remember, on my first flight with him, he had me land the big bird back at Honolulu, talking me through to an acceptable touchdown and rollout. I said to him, "Harry, if I'd been you, I'd have never let me land the airplane." His answer was a classic: "Heck, what's the worst that could happen? A ground loop? Did I tell you about the time I ground-looped at Kahului right at the intersection of Two and Five? Shut down the whole airport! Boy, were they mad at me!"

On March 1, local aviators paid Harry a fitting tribute with a fly-by at Mokuleia for family and friends, during which his ashes were scattered from Dave Bettencourt's C-170, appropriately wrapped in a Hawaii Sectional chart; Frank Baker led the procession in his Navajo, followed by Bob Justman and Willy Schauer in RV-4s, a Cadet from HCC/UND, two Skyhawks, the C-170, Howard Word's Luscombe, and my CAP-10.

In a sense, Harry's passing marks the end of an era in aviation, especially here in Hawaii. But, deep down, that era lives on in all the lives Harry touched. Blue skies, friend.

The Great Hawaiian Air Race 2003

Twenty-two aircraft and crews competed for prizes, trophies, and fun in the Fifth Make-A-Wish Great Hawaiian Air Race. Race day dawned wet and dreary, with the promise of clearing later. It did, and the racers lifted off the Reef Runway just before 11 am on Saturday, February 15, for their windy, bumpy, and challenging trek to Hana. This was the fewest number of starters since the race began, five years ago, due to a combination of factors, including the economy, illnesses, competing venues, and the like.

The race can be flown for Proficiency, in which the pilot estimates the precise amount of fuel and time to complete the course; in Speed, in which the pilot competes against the handicapped speed for that specific aircraft; or both. Thus, there are major prizes for the top finishers in Speed, Proficiency, and combined, known as Top Gun. In addition to the main race, there was an optional Lana'i Rally on Sunday and a Mystery Race around Kaua'i after the race ended on Monday at Dillingham.

Many of the Mainland racers that flew the GHAR in the past were unable to make it this year, and local pilots more than stepped up to the challenge. Especially gratifying was the continued and energetic participation by the HCC/UND flight program, and they captured their share of awards. This was also the first year without an Australian contingent, although the Queen's English was ably represented by Wilfred Bagnall, an engaging Brit who kept the international flavor of the event. I still haven't figured out how to get more local pilots to participate, especially those who own all part of their aircraft. Any ideas will be most appreciated.

As has become a tradition, handicapping was done at Hana. In the evening racers met at an informal Saturday night reception, held at the beach, since the Hotel Hana Maui declined to host their Manager's Reception this year. Sunday was available to racers to tour the many attractions of the area or compete in the Lana'i 300 Rally. In the evening, racers gathered at Coila Ead's magnificent estate for the traditional luau and air show. This year Clint Churchill's excellent aerobatic routine was the entire show, since I wimped out of flying the CAP-10 in rain and the Coast Guard had higher priorities for their available helicopters.

Monday dawned clear and bright, except for a few showers and the racers took off on the final leg, ending at Dillingham Field on O'ahu. A few, who hadn't had their fill of flying then launched on the Mystery 300.

Cameras were gathered, the film was developed, and the Race Board went into seclusion scoring the pictures, assigning penalty points, and coming up with the final results which were presented at the Awards Banquet at the Hilton Hawaiian Village.

#### **SPEED CATEGORY (number is difference from handicapped speed)**

- #1 Mike Singer & Emily Singer (father/daughter) & Kyle Gray (HI), PA24-250 Comanche, -4.58
- #2 Jon Murakami & Kenji Salmoiraghi, HCC/UND Team, PA-28 Cadet, -5.69
- #3 Kalahiki Chang & Steven "Wojo" Csigi II, HCC/UND Team, PA-28 Cadet, -5.81
- #4 Daniel Sole & Colin Namba, HCC/UND Team, PA-28 Cadet, -6.95
- #5 Willie Tashima & Eve Love (HI), A36 Bonanza, -7.43



This year the weather made it very difficult to approach the handicap speeds, since turbulence robs you of speed, and there was plenty of that to go around. However, as in past years, there were five racers whose fuel error was under a gallon, and four whose time estimates were within a minute. That is after almost 600 miles of flying! It was gratifying to see that the HCC/UND teams spent considerable time planning the race, and took home the awards to show for their hard work.

Speaking of hard work, an event like this takes a huge amount of effort by a lot of volunteers. In addition to the organizers, who spent many hours in planning meetings and talking to the right folks to make things happen, there were others, such as timers at HNL, Wailea Pier, Maui, Hana, Maui, and Dillingham; the judges at Hana and Dillingham; the scorers at Super Geeks; the marshalls at HNL, Hana, and Dillingham; the registrars, aircraft inspectors, and, well the list goes on. Thanks to all!

A special thanks goes to two groups of professionals who enabled the whole thing to happen: First, the State DoT management staff at HNL who enabled parking for contestants and got the flagman and timers out to the Reef Runway and back. A special thanks to Bob Hansmeier and Skeeter Jackson, and also to Morris Tamanaha, the State GA Officer, for his assistance. Vital to the success of the event were the FAA folks at both ATC and FSS. Rich Sullivan and Craig Arakawa at the Honolulu Control Facility enabled the mass taxi and takeoff from the Reef Runway and the discrete transponder codes and a myriad of related details. When weather forced a delay in the scheduled departure time, they found us another window that allowed use of the Reef Runway. The FSS provided briefings both at Island Seaplanes on Saturday, and a briefing faxed to the hotel in Hana on Monday, as well as entering and closing all those flight plans. Gary and Glenn, Mahalo!

Also deserving mention are the Coast Guard and Coast Guard Auxiliary who provided cover during the race, to ensure a prompt response to any mishap.

Special thanks go to Pat and Debbie Magie for their superb hospitality for the evening social after the pre-race briefings and the race-day breakfast. Theirs is a truly class act, and their support is very much appreciated.

And, of course, a major Mahalo! to all the racers who spent so much time, effort, and money for this great cause. Without you folks, there is no GHAR, of course, and by conducting yourselves with enthusiasm and safety, you displayed the best GA has to offer.

So, what's the point of all this effort and expense? Foremost, of course, is to raise funds for Make-A-Wish Hawaii, and

fly with as much precision, skill and luck as you can muster on a challenging course, in most cases, in a manner that far exceeds what we do on a day-to-day basis when we fly. For visitors and kamaaina alike, it also offers unique access to the unparalleled beauty of the islands and some of its culture. And, for everyone, it presents General Aviation in a positive light, doing positive things for the community. It is a worthwhile endeavor. Please consider getting involved next year.

#### Young Eagles

If you are an FAA member and are interested in participating in Young Eagle flights for youngsters, please contact John Gleeson at

808-942-1896. This excellent program introduces young people to the joys and wonder of aviation. (If you are not yet an FAA member, this might be a good reason to join.)

Be careful out there

Apr. 5, 2003. 10:58 AM

## Popular, pioneering toaster pastry turns 40

BATTLE CREEK, Mich. (AP) — Bill Post knew that he had a hit on his hands when his children kept asking him to bring home some more of those fruit scones from work.

It was September 1963 when Post, then the manager of a Keebler Food Co. plant in Grand Rapids, was approached by Kellogg Co. to help the Battle Creek cereal giant develop a breakfast food for the toaster.

When Post took home some early examples of what the two companies were jointly developing, he found that his children loved fixing and eating the flat, fruit-filled pastries.

"I used to bring a lot of stuff home — samples you'd run — and they'd turn up their noses, they didn't like this or that," Post recalls. "But they used to ask me, 'Bring those fruit scones home.' That's what we called them at first, internally. Fruit scones. 'Bring some of those home, will you, Dad?'"

Pop-Tarts were born.

They were an instant hit when test-marketed in Cleveland in late 1963. Post, now 75 and a new-product consultant for Kellogg, which acquired Keebler two years ago, says Kellogg sold out of all 45,000 cases of each of the four original, unfrosted flavors — strawberry, blueberry, apple currant and brown sugar cinnamon — it had prepared for the test run

The pioneering toaster pastry would go on to become Kellogg's strongest brand and a staple found in millions of American kitchens, office desk drawers and college dorm rooms. Pop-Tarts also are sold in Canada and the United Kingdom.

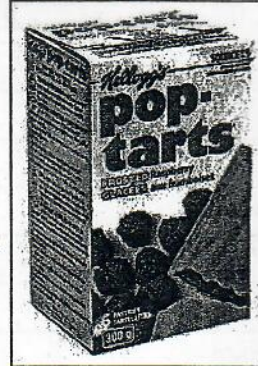
Despite an expanding selection of convenience breakfast foods such as granola bars, fruit bars and frozen sandwiches on the market, Pop-Tarts continue to grow in popularity, says Jeff Montie, president of Kellogg's morning foods division.

The company now sells about 2 billion Pop-Tarts each year in United States, which is double the sales of the early 1990s, he says.

"Today, it's our number-one brand," Montie says. "It has had great growth over the last 20 to 25 years. It continues to grow and is just one of those brands that we always think, is there more upside in it?"

The original Pop-Tarts bore only a slight resemblance to today's product. Though they've always had the small "docker holes to allow the steam from the heated filling to escape, the pastries used to have rounded corners and a diagonal crimp running through the middle.

Frosting wasn't added until the late 1960s, says Post, who retired as a senior vice president of Keebler in 1985 and now lives next to Glen Lake in Leelanau County. Post came up with the idea after running some Pop-Tarts through a



AP PHOTO  
The pop tart turns 50 years old this year.

cookie-icing machine.

He took some of the frosted Pop-Tarts to show Bill Lamothe, a Kellogg executive in charge of the pastry's development at the company. Lamothe would go on to become chairman and chief executive officer of Kellogg.

"So I came to Battle Creek with toaster in hand, with icing on Pop-Tarts," Post says. "We put 'em in the toaster, showed him it didn't melt. And he said, 'Wow, that's really something.'"

Within an hour, Lamothe instructed Post to frost all varieties of Pop-Tarts — a quick decision that exemplified Kellogg's entrepreneurial spirit at the time, Post says.

"We just doubled the market with that one decision made in one day," he says. "That's how astute Kellogg is at detecting trends."

Today, Kellogg offers 28 varieties of Pop-Tarts. The most popular are frosted strawberry, frosted brown sugar cinnamon and S'mores, the company says.

The newest, Pop-Tarts Yogurt Blasts, started appearing on store shelves in March in two flavors, strawberry and blueberry. Each contains a mix of fruit and yogurt filling.

"With a brand that has been around for nearly 40 years, it's incredibly important that we understand the changes in consumer tastes and trends ... to ensure that it is still popular throughout the years," says Jenny Enochson, a Kellogg spokeswoman.

Children and teenagers remain the biggest consumers of Pop-Tarts. Kellogg expanded the line with Snack Stix, an afternoon-snack version, and Pastry Swirls, which are targeted for adults.

Montie says he believes there are two primary reasons for Pop-Tarts' continued growth: Adults who ate them as children continue to eat them as well as feed them to their own children, and Kellogg's aggressive advertising and promotion of the brand.

Over the years, competitors such as Pillsbury, Nabisco and Post have introduced toaster pastries of their own, with varying degrees of success.

At Western Michigan University in Kalamazoo, Shaun Zmuda, a 20-year-old junior from Detroit, says he has eaten Pop-Tarts since childhood and "at least three or four times a week" grabs one before heading to class in the morning. His favorites are frosted cherry and frosted brown sugar cinnamon.

"They're good-tasting and you can eat them cold or warm," says Zmuda.

His friend, Lindsay Ruby, 19, a sophomore at the school from Rochester Hills, says she rarely used to eat Pop-Tarts until she entered college. Now she eats them about twice a week, and not always in the morning.

"If I didn't get to get to eat lunch or something, I like a Pop-Tart — as long as I didn't eat them in the morning," says Ruby, whose favorite flavor is frosted strawberry.

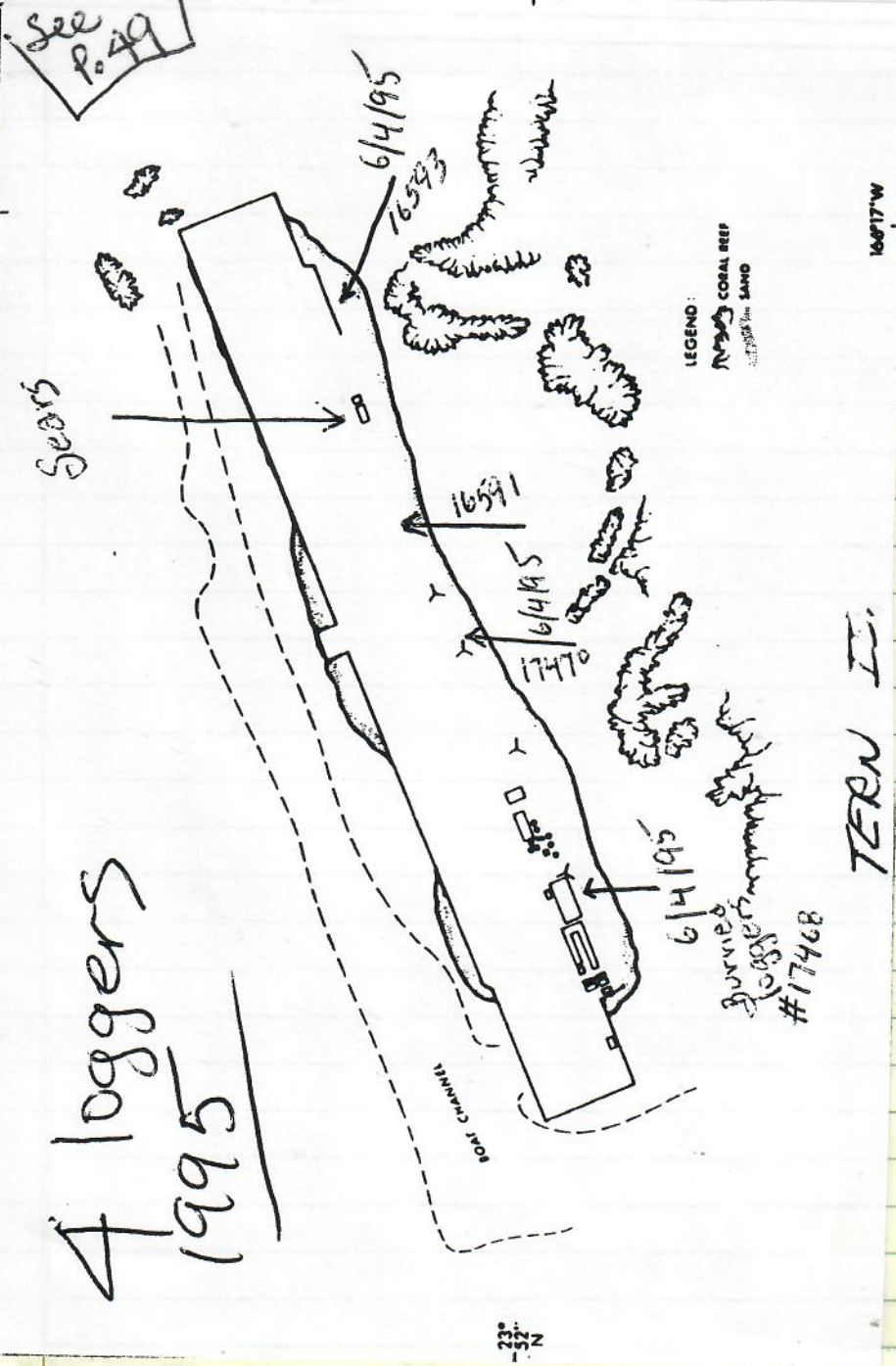
Bob Keith, a professor of nutrition and food science at Auburn University, says there's nothing wrong with occasionally having a Pop-Tart for breakfast.

"They are fortified with certain vitamins. They have some sugar in them but they're not really high in fat," Keith says. "So, if you ate that Pop-Tart with a glass of milk, for example, in the mornings, that would be an acceptable breakfast"

for some breakfasts out of that week."

But he cautions against overindulging.

"If you're eating Pop-Tarts every day, I would say that you probably ought to do some other things for breakfast that could improve your variety," Keith says.



See P. 49

Scaev

4 loggers  
1995

LEGEND:  
CORAL REEF  
LAND

burned loggers  
#17468

TERN I.

33° N

George,

6-16-02

115

Thank you for your thoughtful letter, the pictures and the treats! I just sent a letter to my parents and included one of your pictures. That will make their day - Thanks!

We received all the pit tags you sent and hope that we use every one! We've pulled the "stash" from the FWS Bio Room and will be using those first. I've sent back a flip lock marked "old" without the sterilization indicator for your review. Brenda Becker offered to let us borrow pit tags from them should we run out since their isn't another plane until camp is over, so we're set!

I've made copies of the 1997 data sheets and the daily totals form that Aaron filled out for a quick reference. There are also nest success originals and sighting forms from Tern Island. If you'd like those as well, let us know. Dorno should have a copy of those in Hon. because there's a note from Vanessa dated 8/01<sup>st</sup> return to Tern on them. ~ 6/13/02

During my walks a couple of days <sup>ago</sup> I saw L2. It was marked on the <sup>1</sup>st Tern? the back right and middle left. There was a large amount of damage to the carapace in an inverted "V" and I took a photo for your reference. Thought you'd be interested. Also, Tom (Tristover) saw a on turtle or skig with a satellite trans. still attached. He took a digital photo, so I'll bring that with me on 7/2. Aaron is hoping it'll come up to back

after he switches to the tower and he can remove it then.

Hope you ~~can~~ have a fun and safe trip, I look forward to hearing about it.

Aloha, ERINGREEN  
c. 6/13/02

"I'll be bringing  
16 copies of  
17 I.D. forms  
the 7/2 flight

Dear Aaron and Erin,

Welcome to your first day of Turtle Camp employment. I am sorry I could not be here to work with you both this week. But, in any case, you will get a few words of my oh so vast wisdom via the following letter. I am going to outline here a few points that George Balazs and I covered in our conversations about Turtle camp this year and some logistics so we are all on the same page as far as expectations go.

**About the staffing:** Aaron you are a USFWS employee, and Erin you are a NMFS contractor and USFWS volunteer. You will both be under the supervision of Debra Henry at Tern Island and while on East Island. George will be your main contact for any and all turtle questions or problems. So, just to make it clear, everything out at FFS needs to go through Debra.

**About the duties:** Please follow the SOP as written. George and I agreed on one major change however. Neither of you will need to input the data into the computer database at Tern Island. You will however be responsible for transferring data from the log books to the data forms. All pages of the log books and data forms **MUST BE PHOTOCOPIED** and left at Tern Island. I recommend that you do this while at Tern during your 4 days off East Island. That way you won't be buried under hours of copying at the end. You must have the SOP complete by 12 July. One copy needs to be left at Tern, one copy needs to go to George, and one cope (electronic and hard copy) need to go to me when I meet the plane on that day.

**About during your 4 days at Tern - here is what I wrote to Debra explaining your duties:**  
 "They should be working on transferring data from the data books to data sheets. Double/triple checking data sheets to book from the other techs work. They also need to make photo copies of all pages of the data books and complete/correct data sheets. All photo copies and a copy (hard copy and electronic copy) of the revised SOP must be left at Tern Island before they leave!! George and I agreed that the techs will not be responsible for inputting data into the database at Tern this year. You can assign them other duties as you see fit, but keep in mind that to be best able to do their jobs on East, they need to keep that night schedule at Tern and get some rest." This means that all three of you need to sit down and discuss other tasks that can be conducted at night or in the afternoons to fill your time, so you are not exhausted, but also so you are still productive.

**About Safety:** Please sit down with Debra and work on radio schedules, boating schedules and so on. Debra will be providing the boat support to get you to and from East.

**About Paperwork:** Aaron you should have all paperwork complete on 21 May. If you have any questions about how anything needs to be filled out ask Beth Flint. When your paperwork is complete please make one photocopy for your records, one photocopy for Stuart Sakurai, and give the originals to Stuart to mail into the regional office. Erin, you have completed your paperwork for USFWS volunteer work, so please call Shawn to see if she needs anything else from you.

AARON Dietrich - 959-4288  
 ERIN GREEN - 734-1160 home  
 591-8831 work

**About other Duties while in Honolulu:** On the 21<sup>st</sup> and the 24<sup>th</sup>, since you are on the payroll, you will be given a list of projects to do either at Kapahulu or at the Honolulu office by Cindy. Please work your full 8 hours and complete as much of the list as you possible can.

Contact Information:

FWS Office: 541-1201

George Balazs Office 808-983-5733 and Cell 808-286-2899

George will be out of the office from 24 June to 9 July, so to get ahold of him you will need to call

Shawn Murakawa Office 983-5731 or Cell 286-4359 or

Shandelle Office 983-5747 or Cell 286-4377

You should have your mail sent to:

Your Name

c/o Tern Island

P.O. Box 50167

Honolulu, HI 96850

"2002 EAST ISLAND HTS  
TURTLE SUITCASE" CONTENTS

Marine Turtle Research  
NMFS HONOLULU LAB  
2570 Dole Street  
Honolulu, HI 96822-2396

400 PITTAGS

2 - TRACKER II PIT TAG READERS  
WITH ONE CHARGER (1 Battery each)

1 - DESTRON PIT TAG READER  
WITH ONE CHARGER

1 - SMALL PBY TOOL / FLIPPER TAG SCRAPER

22 TEMPERATURE LOGGERS WITH ID TAGS

3 - PAIR SMALL GLOVES

1 - FISH LINE CUTTING SHEARS

3 - AA SMALL FLASHLIGHTS

3 - 27EXP. FLASH DISPOSABLE CAMERAS

2 - 24EXP. ROLLS OF 35MM PRINT FILM

1 - BINDER OF DATA ENTRY SHEETS

1 - ENVELOPE OF SPECIAL  
TURTLE FORMS / LISTS

BALAZS  
2002

DAILY TOTALS (PM-AM) FOR ADULT FEMALE GREEN TURTLES NESTING  
AT EAST IS. FRENCH FRIGATE SHOALS NMF5, HONOLULU LAB  
Marine Turtle Research  
2570 Dole Street  
Honolulu, HI 96822-2396

N=447

DATE	TOTAL NO. TURTLES UP	NO. OF NEW TURTLES IDed	NUMBER OF NESTS N/P/M	YOUR NAME	COMMENTS
6/3/02	16	16	0N, 1P, 0M	AD/EG	Training Night #1, not a full night of walks. Moon @ 7:00
6/4	25	22	2N, 0P, 0M	AD/EG	" " " " #2, mostly just shadowed Erin
6/5	39	30	0N, 3P, 2M	AD	8 mom + pups, kept me from getting to a bunch of turtles
6/6	50	41	6N, 1P, 1M	AD	7 mom + pups new, still tight getting around. Nice night.
6/7	55	32	2N, 3P, 5M	AD	Few squals, turtle plowed the few saw a flap, think it got a pup/mom
6/8	29	10	1N, 0P, 0M	AD	Heavier squals, seals higher up couldn't get to a lot of turtles
6/9	36	23	2N, 3P, 1M	AD	More sharks, only saw one fledgling and it made it!
6/10	40	22	0N, 0P, 3M	EG	No moon seals making it difficult to get around - great first night!
6/11	36	19	1N, 1P, 4M	EG	No moon, rainy and nasty seals higher up and in larger gully's than usual
6/12	30	20	2N, 2P, 3M	EG	Seals made VERY hard. Great night though! over 30 pit tags in ☺
6/13	34	21	1N, 0P, 13M	EG	
6/14	49	21	2N, 1P, 6M	AD	Good first night back, getting a little moonlight new, two in
6/15	50	14	0N, 2P, 3M	AD	Beautiful night, very mellow wind, seals sound asleep.
6/16	42	12	2N, 1P, 3M	AD	On and off squals through the night, got bad about 4:30 am
6/17	62	14	4N, 1P, 2M	AD	
6/18	58	6	5N, 2P, 18M	EG	Seals clumped together missed very few turtles. lots of resights - great weather & light rain on/off all night.
6/19	70	15	4N, 3P, 20M	EG	Seals were great only missed 1 new
6/20	61	12	1N, 2P, 4M	EG	Rain on and off, high winds - flash light trouble
6/21	58	6	0N, 3P, 6M	EG	NASTY weather winds over 30k rained all night
6/22	58	8	2N, 2P, 10M	AD	nice night, kinda mellow. Moon is bright.
6/23	-	-	-	AD	Finally found shredder! Yeah beautiful night
6/24	37	7	1N, 2P, 5M	AD	Seal trapped me inside all night, bastard. Data night
6/25	43	8	4N, 3P, 2M	AD	Beautiful again, low tide, full moon lots of NEEDS LIST turtles to do
6/26	51	12	3N, 2P, 2M	EG	Light rain, seals great busy with NEEDS turtles
6/27	53	7	3N, 0P, 4M	EG	Light rain, seals great again Nice moon
6/28	50	5	2N, 1P, 4M	EG	Moon up late, Nice weather "zigzagging" cause of seals
6/29	59	11	2N, 1P, 3M	AD	
6/30	58	6	0N, 0P, 5M	AD	



BALAZS

DAILY TOTALS (PM-AM) FOR ADULT FEMALE GREEN TURTLES NESTING  
AT EAST IS. FRENCH FRIGATE SHOALS NMFS, HONOLULU LAB  
Marine Turtle Research  
2570 Dole Street  
Honolulu, HI 96822-2396

DATE	TOTAL NO. TURTLES UP	NO. OF NEW TURTLES IDed	NUMBER OF NESTS N/P/M	YOUR NAME	COMMENTS
7/1/02	51	1	1N, 1P, 0M	AD	
7/2/02	38	1	1N, 0P, 1M	AD	
7/3/02	42	4	1N, 2P, 4M	AD	
7/4/02	62	9	2N, 4P, 0M	eg	moon up late, slow getting around - seals, squall passed over for 40m
7/5/02	39	3	1N, 1P, 2M	eg	NASTY weather stuck in tent for hrs heavy wind
7/6/02	32	4	1N, 0P, 2M	eg	heavy winds, rained on and off all night. Literally crawled to get back - Seals!!
7/7/02	40	5	2N, 2P, 1M	eg	Rained all night, windy and cold, last night got to a lot of turtles! had to sit out for a while, but don't think I missed any hours
7/8/02	—	—	—	eg	
7/9/02					↑ Breakdown
		TOTAL =			
		447			

12 <i>By Dominique</i>	13	14 <i>MAY 2002</i>	15	16	17 Domo out of town until 10 June	18
19	20	21 Report to USFWS Office 0900 Fill out paperwork Work at Kapahulu	22 Work With George Balazs	23 Work with George Balazs	24 Work at Kapahulu	25
26	27 Stay at Kapahulu for flight to Tern Island Pick up	28 Fly to Tern Island Prepare Gear	29 Prepare Gear	30 Prepare Gear	31 Prepare Gear	

Sunday	Monday	Tuesday	Wednesday	Thursday	Friday	Saturday
<h1>June 2002</h1>						1 Prepare Gear
2 Prepare Gear or Set up Camp	3 Set up Camp and Conduct Camp Both Techs	4 Conduct Camp Both Techs	5 One Tech East One Tech Tern	6 One Tech East One Tech Tern	7 Switch Out One Tech East One Tech Tern	8 One Tech East One Tech Tern
9 One Tech East One Tech Tern	10 One Tech East One Tech Tern Domo Back to Town	11 Switch Out One Tech East One Tech Tern	12 One Tech East One Tech Tern	13 One Tech East One Tech Tern	14 One Tech East One Tech Tern	15 Switch Out One Tech East One Tech Tern Flight to Tern
16 One Tech East One Tech Tern	17 One Tech East One Tech Tern Flight To Tern	18 One Tech East One Tech Tern	19 Switch Out One Tech East One Tech Tern	20 One Tech East One Tech Tern	21 One Tech East One Tech Tern	22 One Tech East One Tech Tern
23 Switch Out One Tech East One Tech Tern	24 One Tech East One Tech Tern G. Balazs out of town until 9 July	25 One Tech East One Tech Tern	26 One Tech East One Tech Tern	27 Switch Out One Tech East One Tech Tern	28 One Tech East One Tech Tern	29 One Tech East One Tech Tern
30 One Tech East One Tech Tern						

Sunday	Monday	Tuesday	Wednesday	Thursday	Friday	Saturday
<h1>July 2002</h1>						
	1 Switch Out One Tech East One Tech Tern	2 One Tech East One Tech Tern	3 One Tech East One Tech Tern	4 One Tech East One Tech Tern	5 One Tech East One Tech Tern	6 Pull Camp off East Island
7 Clean/Store Gear Write SOP	8 Clean/Store Gear Write SOP	9 Clean/Store Gear Write SOP  G. Balazs Back to town	10 Clean/Store Gear Write SOP	11 Clean/Store Gear Write SOP	12 Flight: Erin Depart Tern Aaron Last Day for FWS	13 Aaron on Shark Tower
14	15 Flight to Tern	16	17	18	19	20

612C is Hulali (shining, glittering, to reflect light) *M<sup>o</sup> HTS*  
 436C is Akahele (cautious)

Neither are honu we've known for long. One day they just showed up with tags. They're not like Tiamat or Mendelbrot who we knew before they first-nested and were issued their jewelry.

We have another tagged female --RFF sheared as if by scissors. We simply can NOT get close enough to read the tag. Last summer we didn't even try. We just ignored her to build up what little confidence she has. It would be interesting for your people there to photo the profile of any female with only half a RFF and see if we can get a match.

Of course I know they're too busy for that and that's the reason I never brought it up.

-----  
 At 07:58 PM 5/13/2003 -1000, George H. Balazs wrote:

>OK roger dodger, the shorter the list the more likely of our being able  
 >to do each item! Do the first two have Names to go with the tags  
 >numbers?

> On Tue, 13 May 2003, Ursula Keuper-Bennett wrote:

> ~~436C~~

> ~~612C~~

> McTaggart F765 (not at Honokowai for 2002 but you didn't confirm her at  
 > East either)

> Tiamat 122C last nested 2000

> Lomi U164 (remember the female who landed right beside you when you were  
 > attaching a TDR to a male? And then you petted her?)

>>

>> It's a very short list this time because last summer we had So Many wahines  
 >> up there.

>>

>> What's really interesting is if Tiamat is up there she'll be truly  
 >> special. She first-nested during your 25th Anniversary and now she'll be  
 >> there for the 30th also. We call her our Silver Honu.

>>

>> Looking at your Message Header "priority things (pictures) if I had just  
 >> one, I'd like Ti to crawl up to you while you're there and you and her pose  
 >> for a photo. Then I want you to show up at the end of August just as she  
 >> arrives home and I take a pic of you and her at Honokowai also.

>>

>> That's the #1 thing I want.

>>

*See p. 4*

*5*

Date: Sun, 15 Oct 2000 20:08:08 -1000 (HST)  
 From: "George H. Balazs" <gbalazs@honlab.nmfs.hawaii.edu>  
 To: Paul Balazs <elfunnio@hotmail.com>  
 Subject: Re: Aloha Brian

\*\*\*\*\*  
 \* George H. Balazs, Leader \*  
 \* Marine Turtle Research Program \*  
 \* National Marine Fisheries Service \*  
 \* SWFSC Honolulu Laboratory \*  
 \* 2570 Dole Street \*  
 \* Honolulu, Hawaii 96822-2396 USA \*  
 \* Tel: (808) 983-5733 \*  
 \* Fax: (808) 983-2902 \*  
 \* gbalazs@honlab.nmfs.hawaii.edu \*  
 \*\*\*\*\*

On Wed, 16 Aug 2000 Hinwr@aol.com wrote:

> Hi George,  
 >  
 > All is well here. Turtle nesting has slowed and we are getting large numbers  
 > of hatchlings. Hatchlings are being rescued from the north seawall and runway  
 > every day, and we have rescued at least 12 adults so far. I was on the Gins a  
 > few days back and they seem to have considerably more body pits than I  
 > remember in past years. Although I had just got here in 97, the big year, and  
 > don't recall that year real well. Trig is covered with body pits too. We have  
 > not been on Shark or Disappearing. Right now, Tony and I are assisting the  
 > marine debris project and we've seen a few adults between Tern and Trig,  
 > where we've been working. How did the East Island season turn out for you? I  
 > know that Vanessa and Aaron worked very hard. I hope all is well with you.  
 > All the best, Brian  
 >

#### Turtle Nest Relocation Protocol

During the 1997 turtle nesting season daily early morning walks were conducted along the beaches of Tern Island. While on the walks, observed nests laid on East Beach were marked for relocation to South Beach. Typically, the nests on East Beach were moved around 0900. When the nest was located the eggs were taken out of the egg chamber one-by-one while taking care to keep the orientation of each egg exactly the same as in the nest and placed in a 5-gallon bucket. The eggs were then immediately carried to a suitable area along South Beach (area where nesting occurs). An attempt was made to mimic the dimensions and depth of a natural egg chamber. The eggs were placed within the 'egg chamber' one-by-one while maintaining orientation, then sand was placed above the eggs and patted firmly down. The remainder of the hole was filled in using a shovel.

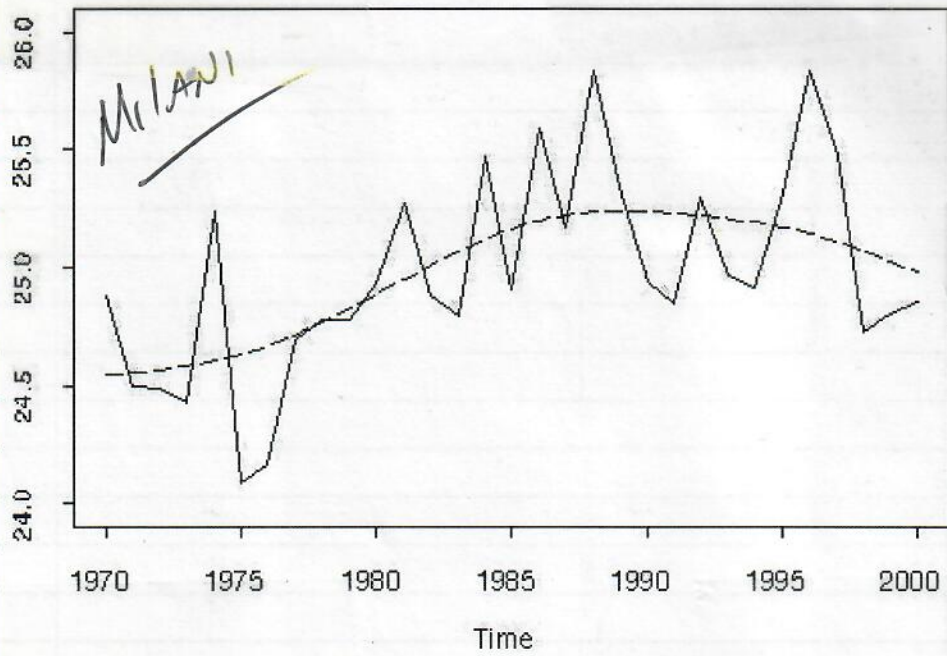
#### The Blurb

During 1997, I took part in these efforts and I remember that there did not seem to be a difference in nest success between relocated and natural nests. I looked through the original data sheets (but not the original field notebooks) and there were notes on some nests that had been relocated. I did not see any notes on entire nest failures of relocated nests. I saw records of live hatchlings retrieved and a few notations where they seemed to find a large number of egg shells. There is no actual quantitative data to be analyzed because after a time workers began recording just the number of live hatchlings retrieved. I believe that there is a good hatch success for relocated nests, especially if they are nests that are removed from areas that would ensure total test failure.

Year	NO. ID NESTERS	TAG Resightings	Resight	Year	NO. ID NESTERS	TAG Resightings	Resighting
1973	66	0	0	1988	180	143	48.32
1974	104	0	0	89	294	143	48.6
1975	111	1	0.9	90	150	59	39.3
1976	24	1	4.1	91	107	53	49.5
1977	44	1	2.3	92	384	196	51.0
1978	66	3	4.5	93	181	102	56.4
1979	55	11	20.0	94	122	72	59.0
1980	45	20	44.4	95	240	139	57.9
1981	127	44	34.6	96	349	187	53.6
1982	111	46	41.4	97	481	294	61.1
1983	28	13	46.4	98	61	47	77.0
1984	122	66	54.1	99	198	127	64.1
1985	131	49	37.4	00	337	181	53.7
1986	59	31	52.5	01	295	191	64.7
1987	124	63	50.8	02	447	303	67.8

2002

1973  
75  
77  
79  
81  
83  
85  
87  
89  
91  
93  
95  
97  
99



FFS\_FAA\_N36\_GroundCrew.jpg

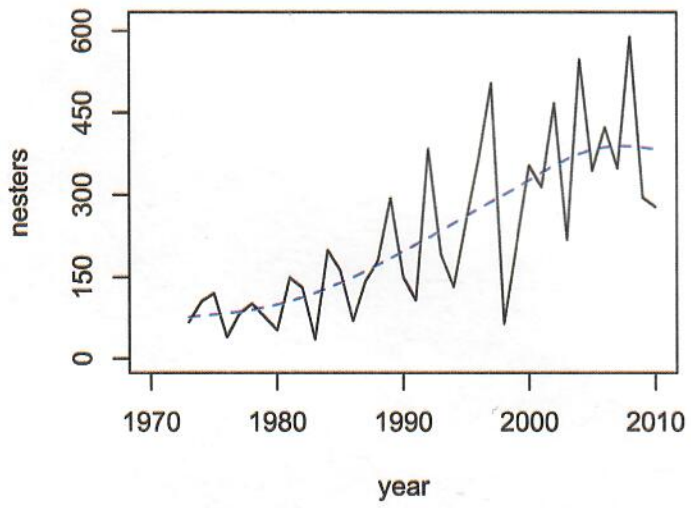








**East Island rookery  
French Frigate Shoals**



2011 35 NIGHTS  
EAST IS.

DATE	TOTAL NO. TURTLES UP	NO. OF NEW TURTLES Ided
6/22/2011	95	95
6/23/2011	98	65
6/24/2011	107	61
6/25/2011	111	57
6/26/2011	103	48
6/27/2011	107	61
6/28/2011	106	52
6/29/2011	97	49
6/30/2011	93	45
7/1/2011	76	36
7/2/2011	76	41
7/3/2011	78	41
7/4/2011	101	26
7/5/2011	97	17
7/6/2011	92	10
7/7/2011	106	12
7/8/2011	99	5
7/9/2011	105	7
7/10/2011	105	8
7/11/2011	103	12
7/12/2011	91	7
7/13/2011	102	6
7/14/2011	89	5
7/15/2011	75	5
7/16/2011	105	5
7/17/2011	103	8
7/18/2011	108	2
7/19/2011	106	4
7/20/2011	108	7
7/21/2011	120	4
7/22/2011	104	2
7/23/2011	82	3
7/24/2011	76	1
7/25/2011	63	1
7/26/2011	77	0

### Tern Island FWS Managers

<u>Name</u>	<u>Month/Year began</u>	<u>Month/Year finished</u>	<u># years</u>
Paula Hartzell	Sep-10	present	
Pete Leary	June-09	Sep-10	1
Dave Zabriskie	September-07	June-09	1.5
Angela Anders	November-05	September-07	2
Jennifer Tietjen	August-03	November-05	2
Chris Eggleston	July-02	August-03	1
Deb Henry	February-02	July-02	0.5
Anthony Palermo	February-00	February-02	2
Brian Allen	1998	February-00	2
Anthony Viggiano	1997	1998	1
Steve Barclay	1993	1996	3
Chris Dipple	1992	1994	2
Mark Weber	1991	1992	1
Jen Megesi	1990	1991	1
Ken Neithhammer	1987	1991	4
Steven Fairaizl	1982	?	
John Andre	1981	1982	

\*Note: Most managers serve as Asst Mgr first; this list does not include Assistant Managers, nor time spe

DAILY TOTALS (PM - AM) FOR ADULT FEMALE GREEN TURTLES NESTING  
AT EAST ISLAND, FRENCH FRIGATE SHOALS  
2004

DATE	TOTAL NO. TURTLES UP	NO. OF NEW TURTLES IDed (MOTOTOOL)	NUMBER OF NESTS N/P/M	YOUR INITIALS	COMMENTS (WEATHER, SPECIAL OBSERVATIONS)
6/1/04	38	38	N-1111 (4) P-1 (1) M- (0)	JP CM	-TDR placed in 24!! on sunset walk -Great moon, great night. -Partial Night - 3 walks ≥ 171 Baskers TIME=
6/2/04	53	41	N- <del>1111</del> 1111 (9) P-1111 (4) M- <del>1111</del> 1111 (8)	JP CM	-Big Night - 1st Full Night -Cloudy at first -Training Night ≥ 186 baskers *Turtle 54 mototooled twice (54 and 54x)
6/3/04	51	33	N-111 (3) P-111 (3) M- <del>1111</del> 1111 (8)	JP CM	-Full Moon -Training Night -Great weather with light wind -Last Training Night = 166 Baskers
6/4/04	64	43	N- <del>1111</del> 1111 (7) P-111 (3) M-111 (3)	JP	-Great weather - no rain, light winds helpful -Mornis still bright and helpful Could not get to ≥ 5 greens because between two nesting pup seals ≥ 170 Baskers
6/5/04	46	16	N-11 (2) P-1111 (4) M- <del>1111</del> 1111 (6)	JP	-Cloudy entire night -slowest night get farrow turtles -Slow Night! (compared to last two) ≥ 120 Baskers (Seals prevented Full Count)
6/6/04	46	26	N- <del>1111</del> 1111 (9) P-111 (3) M- <del>1111</del> 1111 (6)	JP	-Cloudy 1st 2 walks, Clear w 1/2 moon rest of night -pair mating on SE Pt on land just out of water Turtle nested missing 75% of night from FFI. pp ≥ 133 Baskers
6/7/04	45	28	N- <del>1111</del> 1111 (5) P- <del>1111</del> 1111 (5) M-11 (2)	JP	-91 Nesting @ TI on sunset walk @ 19:28 -Several short squalls -224 turtles to tall - Broke last year's #'s in + 1st week! ≥ 134 Baskers (Seals @ SE Pt prevented Full Count)

DAILY TOTALS (PM - AM) FOR ADULT FEMALE GREEN TURTLES NESTING  
AT EAST ISLAND, FRENCH FRIGATE SHOALS

2004

DATE	TOTAL NO. TURTLES UP	NO. OF NEW TURTLES IDed (MOTOTOOL)	NUMBER OF NESTS N/P/M	YOUR INITIALS	COMMENTS (WEATHER, SPECIAL OBSERVATIONS)
6/8/04	50	27	N- <del>    </del> ④ P- <del>  </del> ② M- <del>    </del> ⑧	CM	Windy w/ light rain, half moon Couldn't do full count of baskets due to seals $\geq 104$ One turtle was caught in wire on beach (wrapped around both FLs) cut free
6/9/04	36	19	N- <del>    </del> ⑥ P- <del> </del> ① M- <del>    </del> ⑧	CM	Clear night Couldn't do full count of baskets due to seals $\geq 147$ One turtle missing LFL
6/10/04	37	23	N- <del>    </del> ⑥ P- <del>  </del> ④ M- <del>    </del> ⑧	CM	Very Windy, periods of light rain Basket total 134 seal team counted 271 earlier in day. Two nests dug up by turtles during BF. A lot of seals - 17
6/11/04	46	28	N- <del>    </del> ⑥ P- <del>  </del> ⑤ M- <del>    </del> ⑧	CW	Clear night Basket total 250. One nest dug up One turtle missing RFL
6/12/04	43	24	N- <del> </del> ② P- <del>    </del> ⑦ M- <del>    </del> ⑦	J	Clear night Crescent moon came up late 196 Baskets
6/13/04	52	23	N- <del>    </del> ④ P- <del>  </del> ② M- <del>    </del> ⑦	J	- Nice Night - Cool Breeze, Clear - Slow first lots of turtles making in stream 174 Baskets
6/14/04	70	24	N- <del>    </del> ④ P- <del> </del> ① M- <del>    </del> ⑧	J	- No Wind Early - Squalls from 3-6 - 134 up @ 1914 XBP in sunset - Good # of Renesters walk 191 Baskets

DAILY TOTALS (PM - AM) FOR ADULT FEMALE GREEN TURTLES NESTING  
AT EAST ISLAND, FRENCH FRIGATE SHOALS  
2004

DATE	TOTAL NO. TURTLES UP	NO. OF NEW TURTLES IDed (MOTOTOOL)	NUMBER OF NESTS N/P/M	YOUR INITIALS	COMMENTS (WEATHER, SPECIAL OBSERVATIONS)
6/15/04	80	19	N - IIII (8) P - IIII (6) M - IIII (7)	J	- 3 turtles up on sunset walk - all 3 can moto tooled (2C & 1XBP) - 100 Walk - Rain! 1200 Rain! (Soaking wet) - Nest dug up - Lots of turtles up for second cycle - 177 Baskets
6/16/04	68	13	N - IIII (4) P - IIII (6) M - IIII (19)	CM	- Very windy, periods of moderate rain - Sunset walk - turtles mating in 400 by GBs marker? - 146 baskets - Turtles up during sunset walk #38-XBP @ 19:20 #51C @ 19:20
6/17/04	61	5	N - IIII (6) P - IIII (9) M - IIII (10)	CM	- Mostly cloudy, becoming clear - Sunset walk > 58 baskets - Turtles #423-XBP-19:25, #71-XBP 19:30 (comb) #46-19:40-C all during sunset walk (Ta) - Turtles mating on spit in am. - Very windy
6/18/04	68	13	N - IIII (7) P - IIII (8) M - IIII (20)	CM	- Very windy, partly cloudy - Sunset walk > 154 baskets - mated on spit. - Most turtles up for second cycle
6/19/04	70	8	N - IIII (7) P - IIII (8) M - IIII (5)	J	- unknown turtle XBP @ 19:22 & 73C on Spit @ 19:43 - Very Windy > 25 knots All Night - Crescent Moon up for first walk - 116 Baskets
6/20/04	70	13	N - IIII (3) P - IIII (9) M - IIII (11)	J	- Windy again - Sunset walk 132C @ 19:00M. of 15 - Calm in the morning - 110 Baskets
6/21/04	57	7	N - IIII (3) P - IIII (7) M - IIII (10)	J	- Cool Night, Windy > 20 knots - Cloudy - 132 C S. of Tent - Eye tumors @ 19:17 #2 size on each eye (Pictures 5/15/02) - 453C @ E Spit @ 19:29 - 37 Baskets (Very Low!) - (Cloudy, Windy Day)

Return to George Balazs  
NMFS, PIFSC, Marine Turtle Research  
2570 Dole Street  
Honolulu, Hawaii 96822-2396

why?



DAILY TOTALS (PM - AM) FOR ADULT FEMALE GREEN TURTLES NESTING  
AT EAST ISLAND, FRENCH FRIGATE SHOALS  
2004

DATE	TOTAL NO. TURTLES UP	NO. OF NEW TURTLES IDed (MOTOTOOL)	NUMBER OF NESTS N/P/M	YOUR INITIALS	COMMENTS (WEATHER, SPECIAL OBSERVATIONS)
6/22/04	45	14	N-III (5) P-III (3) M-III (6)	JP	Windy > 25 knots (Rained All Night) @ 18:45 Juvenile turtle swimming in front of tent 1/2 hr canopy -> #251 C East of Tent @ 19:14 -> Squalls 1st 2 walks - cant hear over the wind -> Mother Rain @ 1:00 walk - Soaked (Broke during walk to change into contacts so could see ≥ 188 Baskers
6/23/04	43	8	N-III (8) P-III (6) M-III (4)	JP	Windy = 25 - Airy & Cloudy -> Stars & Moon! At sunset initialled about -> Water coming up high on North Shore Callows the Tiger Sharks to swim right in front of tent -> Spit changing (Skimmer & Loss of it) -> Juvenile Baskers in Morning ≥ 89 Baskers Pictures
6/24/04	41	2	N-III (5) P-III (7) M-III (9)	CW	- Strong Squalls and windy early becoming clear - Hawks Turtle up - pics PC ≥ 149 Baskers on sunset walk - Slow night, finished every walk early. - 20 seals
6/25/04	56	5	N-III (7) P-III (3) M-III (9)	CM	- Clear Night, lots of stars ≥ 202 baskers - 22 seals - #315 - C @ 19:00 W of T1 - 3 turtles within 1m of seal all were digging @ 05:23 - 1 nest dug up
6/26/04	59	3	N-III (10) P-III (2) M-III (12)	CM	- Clear Night, light breeze ≥ 206 baskers during sunset - juvenile up basking - 20 seals - Finished every walk early - Broke record!
6/27/04	62	3	N-III (7) P-III (9) M-III (10)	CM	- Clear night - very pleasant 3/4 moon till 3am ≥ 173 baskers, 18 seals - Mendel brot up & pics PC + BF - A lot of jumpy turtles - 2 nests dug up
6/28/04	63	0	N-III (8) P-III (10) M-III (7)	JP	- 3/4 Moon/Light Winds → Great Night! - 17 PC - Banned to all but head by 39 XBF - 1 nest dug up @ T2 - 1st time no new turtles - Shoot! ≥ 167 Baskers

DAILY TOTALS (PM - AM) FOR ADULT FEMALE GREEN TURTLES NESTING  
AT EAST ISLAND, FRENCH FRIGATE SHOALS  
2004

DATE	TOTAL NO. TURTLES UP	NO. OF NEW TURTLES IDed (MOTOTOOL)	NUMBER OF NESTS N/P/M	YOUR INITIALS	COMMENTS (WEATHER, SPECIAL OBSERVATIONS)
6/29/04	69	2	N- <del>    </del> (9) P- <del>    </del> (9) M- <del>    </del> (3)	JA	> 3/4 Moon, light winds → Great - Partially cloudy - #138 came up! (Rehires) - One Nest Dug up on Turtle's BF - 7 eggs washed up on W. SPIT in morning ≥ 159 Baskets
6/30/04	59	3	N- <del>    </del> (7) P-1 (1) M- <del>    </del> (12)	JA	≥ 20 knots Moon almost full - partially clear - 2 nests dug up ≥ 140 Baskets
7/1/04	62	3	N- <del>    </del> (11) P- <del>    </del> (7) M- <del>    </del> (18)	CM	Partially cloudy - full moon - Good visibility - Nest washed out on WSPIT, crabs eating eggs - 3 Nests dug up - ≥ 123 Baskets - 25 seals - 14 up nesting - good pictures - Squalls during Zamb walk
7/2/04	60	4	N- <del>    </del> (4) P- <del>    </del> (9) M- <del>    </del> (11)	CM	- Partly cloudy → nice night - Good visibility - ≥ 70 baskets - 27 seals - 1 nests dug up - 25 eggs washed up on WSPIT - sand data logger found on top of sand - #250 - C - Prespit @ 19:20 - #129 - C - E of tombs @ 19:40
7/3/04	65	2	N- <del>    </del> (5) P- <del>    </del> (8) M- <del>    </del> (7)	CM	- Partially cloudy - becoming clear - ≥ 66 baskets - 23 seals - #183 - XBP - on SPIT @ 19:28 - #183 did not dig nest, nested on sand - I dug a hole and buried eggs
7/4/04 (Turtle Independence Day)	70	2	N- <del>    </del> (5) P- <del>    </del> (7) M- <del>    </del> (18)	JA	- partially cloudy, no wind - ≥ 25 eggs washed up on WSPIT - High tide hitting 100% of west spit - Nest Dug up - 196 caught in copper wire (cut) ≥ 74 Baskets
7/5/04	55	4	N- <del>    </del> (9) P- <del>    </del> (9) M- <del>    </del> (6)	JA	- no wind early on - 11pm - slight breeze from SW (wind) - EC of 227 on left side is another nest - (227 nested next to other nest) - 46 90% of RFF gone/pictures 132, 133 - Great last night for Me! 4 Nov ≥ 50 Baskets

Return to George Balazs  
NMFS, PIFSC, Marine Turtle Research  
2570 Dole Street  
Honolulu, Hawaii 96822-2396

DAILY TOTALS (PM - AM) FOR ADULT FEMALE GREEN TURTLES NESTING  
AT EAST ISLAND, FRENCH FRIGATE SHOALS  
2004

DATE	TOTAL NO. TURTLES UP	NO. OF NEW TURTLES IDed (MOTOTOOL)	NUMBER OF NESTS N/P/M	YOUR INITIALS	COMMENTS (WEATHER, SPECIAL OBSERVATIONS)
7/6/04	70	7	N - <del>    </del> ⑥ P -      ④ M - <del>     </del> ⑪	CM	- partially cloudy - good night - #260 - C @ 1910 Soft S - 29 seals - #276 - C @ 1911 Soft S - 3 eggs washed on SI - #273 - C @ 1920 Desert - unknown - C @ 1912 E of log - unknown - PC @ 1913 Desert - 20 in W of Big log - 520 - V8P - P45PIT - 1927 - sleeping - 451 - XEC - SPIT - 1931 - 91 - X8P - Small T - 1934 - <u>74 baskets</u>
7/7/04	71	2	N - <del>     </del> ⑫ P - I ② M - <del>     </del> ⑬	CM	- <u>81 baskets</u> - 21 seals - 260 - XEC @ 1905 - E Desert - 522 - C @ 1906 - Big log - 241 - C @ 1920 - Small T - 273 - C @ 1925 - SPIT - juvenile basker up - partially cloudy - no wind - <u>Tutu up</u> - pictures of BF
7/8/04	55	3	N - II ② P - III ③ M - <del>     </del> ⑫	CM	- Last night of sampling - <u>74 baskets</u> - 25 seals - juvenile basker on SEP - #82 - C @ 1914 - Soft = log - #368 - C @ 1920 - SPIT - L4 bas king on WSPIT @ 1928



# United States Department of the Interior

FWS

## FISH AND WILDLIFE SERVICE

Pacific Islands Ecoregion  
Pacific Remote Islands National Wildlife Refuge Complex  
300 Ala Moana Boulevard, Room 5-231  
Box 50167  
Honolulu, Hawaii 96850

September 14, 2004

George A. (Bud) Antonelis, Jr.  
Chief, Protected Species Investigation  
National Marine Fisheries Service  
Southwest Fisheries Science Center Honolulu Laboratory  
2570 Dole Street  
Honolulu, HI 96822-2396

Dear Bud,

This letter will act as an amendment to Special Use Permit (SUP) 12521-04005 as requested by George Balazs via electronic mail "Proposal amendment request for Phase II of a digital imaging experiment to remotely monitor sea turtles and their habitats at East Island FFS" on 13 September 2004.

The request refers to installing additional satellite equipment associated with the previously established remote monitoring system at East and Tern Islands. The National Marine Fisheries Service (NMFS) will provide all equipment, a small boat, fuel, personnel, flights, and personnel room and board costs at French Frigate Shoals (\$20/person/day) to complete this project. U.S. Fish and Wildlife Service (USFWS) will continue to provide logistical support in Honolulu and at Tern Island, and additional maintenance support for equipment while NMFS staff are not present at Tern Island. NMFS staff and contractors who are to install equipment at Tern Island must work with on-site Tern Island staff to establish locations for all equipment and electrical needs. The Permittee will provide an updated Standard Operating Procedures document to on-site USFWS Tern Island staff and Honolulu staff as soon as possible. Images resulting from this remote monitoring system will be made available and accessible to both NMFS and USFWS. This amendment does not allow for the resulting images to be broadcast or made available to outside parties without further consultation.

All conditions of SUP 12521-04005 also apply to this amendment. If you have any questions please feel free to contact me at 808-792-9560.

Sincerely,

Donald Palawski  
Project Leader

Date: Tue, 6 Jul 2004 14:15:53 EDT  
From: Hinwr@aol.com  
To: gbalazs@honlab.nmfs.hawaii.edu  
Subject: East Island Update 7/1- 7/3

FFS

Hello George,

This is Chris giving you the update for previous stay at East. Hope you had a good 4th of July on the Big Island. It was good out here. We went snorkeling out at La Peruse and had a cookout. No fireworks though. I only have one

more stint out at East, my how the time has gone by. It seems as though we were just arriving here. Anyway here are the numbers:

July 1- 60 total, 3 new, 9 nesters, 1 probably, 12 maybe;

July 2- 61 total, 4 new, 4 nesters, 9 probably, 10 maybe;

July 3- 65 total, 2 new, 5 nesters, 8 probably, 8 maybe.

So the numbers are staying consistent. At least we are still getting some new ones everynight.

That is a mystery about MT50 it will be interesting to see where that came from.

The Spit is getting washed out and is changing daily. Waves at high tide wash over just about the shole thing and there are eggs washed up everday. Some

turtles are still nesting there but not nearly as many as earlier in the season. The waves have been getting larger and changing the beaches all around the island.

That's all the news for now. I'm sure we will be in touch very soon and you will hear from Joe in the next couple days. Tlak to you soon. Chris

Date: Sat, 3 Jul 2004 18:17:06 EDT  
From: Hinwr@aol.com  
To: gbalazs@honlab.nmfs.hawaii.edu  
Subject: (no subject)

Hey George,

Things are going well here. The season is going buy so fast.

Your questions

- Dug up Nests

We are keeping track of dug up nests on the daily totals form and in the comments section on the data sheet. (When we see a turtle dig up a nest it is written on the bottom portion of the data sheet under comments). I am not sure the total # of nests dug up. I will try and send you that after my next shift.

I will have to check the daily totals form on East.

- Nesting Map

We are definitely going to try and make up a map of nest location. We will have to go throught the field books and mark the M,P, and N's down. We will do this after the data, clean up, and etc. is done. It seems the best way to do it because it would have been hard to start it a different way in the middle of the season and then incorporate the old data (timewise). We definitely want to get something down for a map of nest location. The end result will be more general than specific, but would definitely be cool to see. (An idea for next year (?) would be to set up stakes every ten meters and record the locations of the nests more accurately. Then mark them down on a map after each

night's data collection. This would ensure the makeup of the map is more accurate

and be just a little work each day instead of a project at the end.)

But again - we do intend to get a map together. It will be cool to see how the nests fill in the island.

- Inclement weather

We are changing the schedule around to make sure the work days are even if bad weather keeps someone on a little longer. Only me so far. I may have angered the Hawaiian god of the sea? I like the long shifts though - so it actually is a blessing.

Field update

- Hawes, Mendelbrot, and Tutu have all been photographed for Ursula and Peter. If any more special turtles come up we will catch them on film as well. The digital is definitely helping in terms of quality of pictures.

- 507 turtles have come up in total.

- We are keeping up to date on data

- All the data loggers are in.

- No hatchlings yet -but we are ever on the lookout.

Tern updates

- The crew here has set up the barrier wall for hatchlings: to keep them from getting on to the runway.

Numbers

6/28 63 total, 0 new 8n, 10p, 7m

6/29 69 total, 2 new 9n, 9p, 13m

6/30 59 total 3 new 7n, 1p, 12m

The following 8 days will probably be our last chance with several turtles, so we are doing our best to get everything on every turtle.

Questions for you.

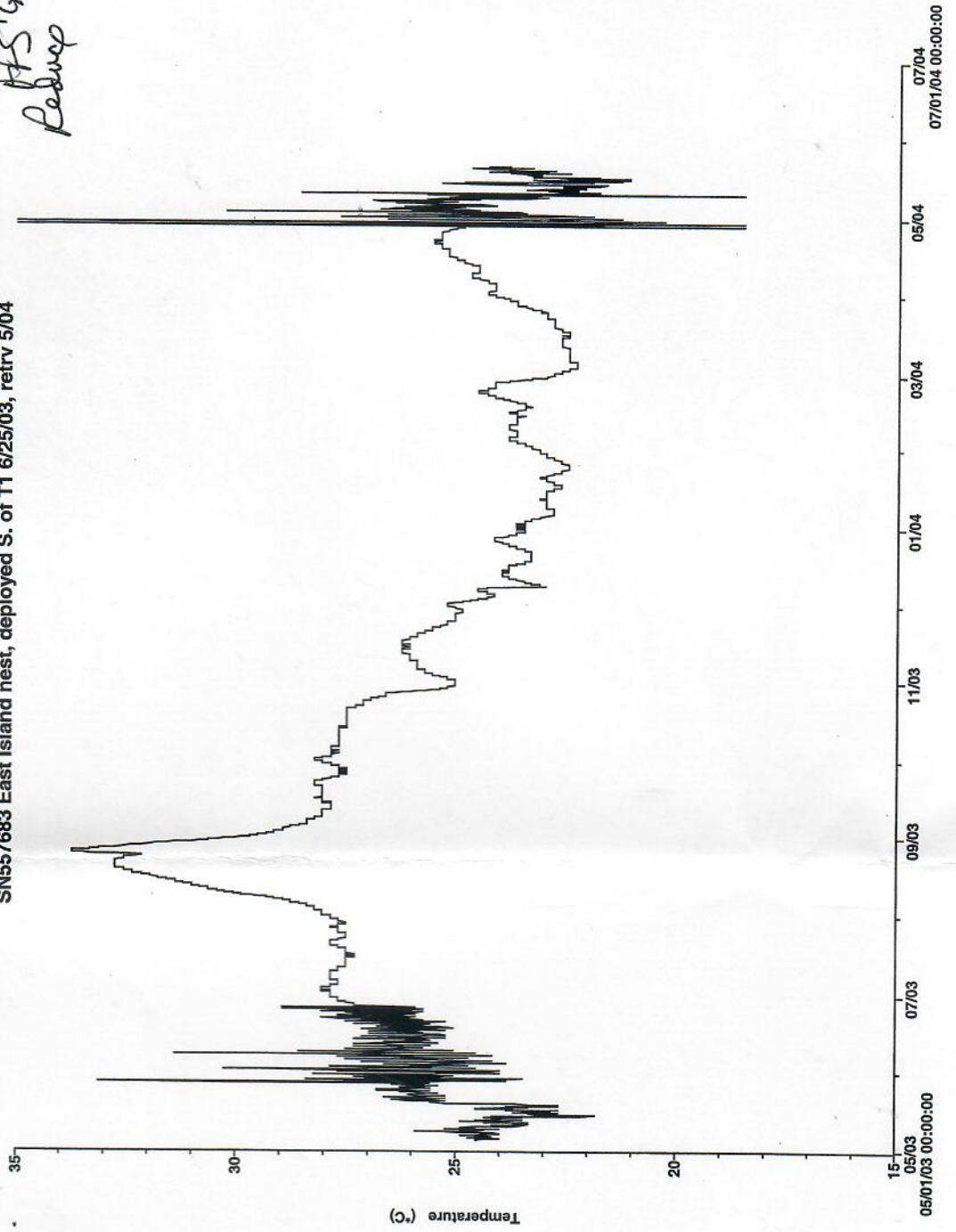
- If it has been less than the fourteen days should we still scan the pit tags to make sure they are in? (Since it will be the last time we see certain turtles.) We are doing this and then marking it down on the data sheets.
- Could you tell us where you placed the dataloggers on Tern last year? So far we have two of them.

Thanks for your answers to our questions. Please let us know if you have any more questions or concerns. Chris is in good spirits on East and I am working on data and a datalogger map on Tern.

Aloha,  
Joe

Return  
FFS TGB  
Redup

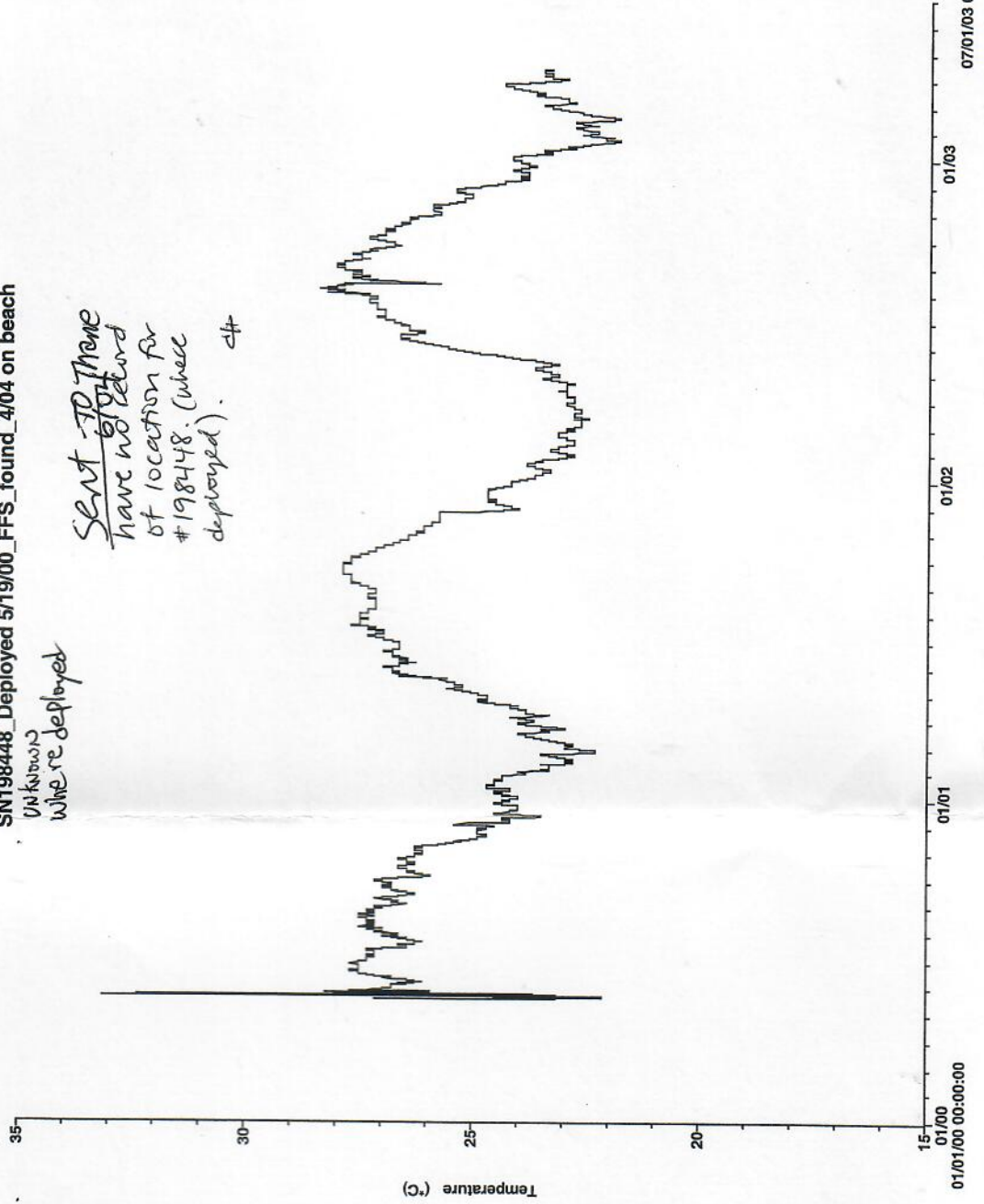
SN557683 East Island nest, deployed S. of T1 6/25/03, retrv 5/04



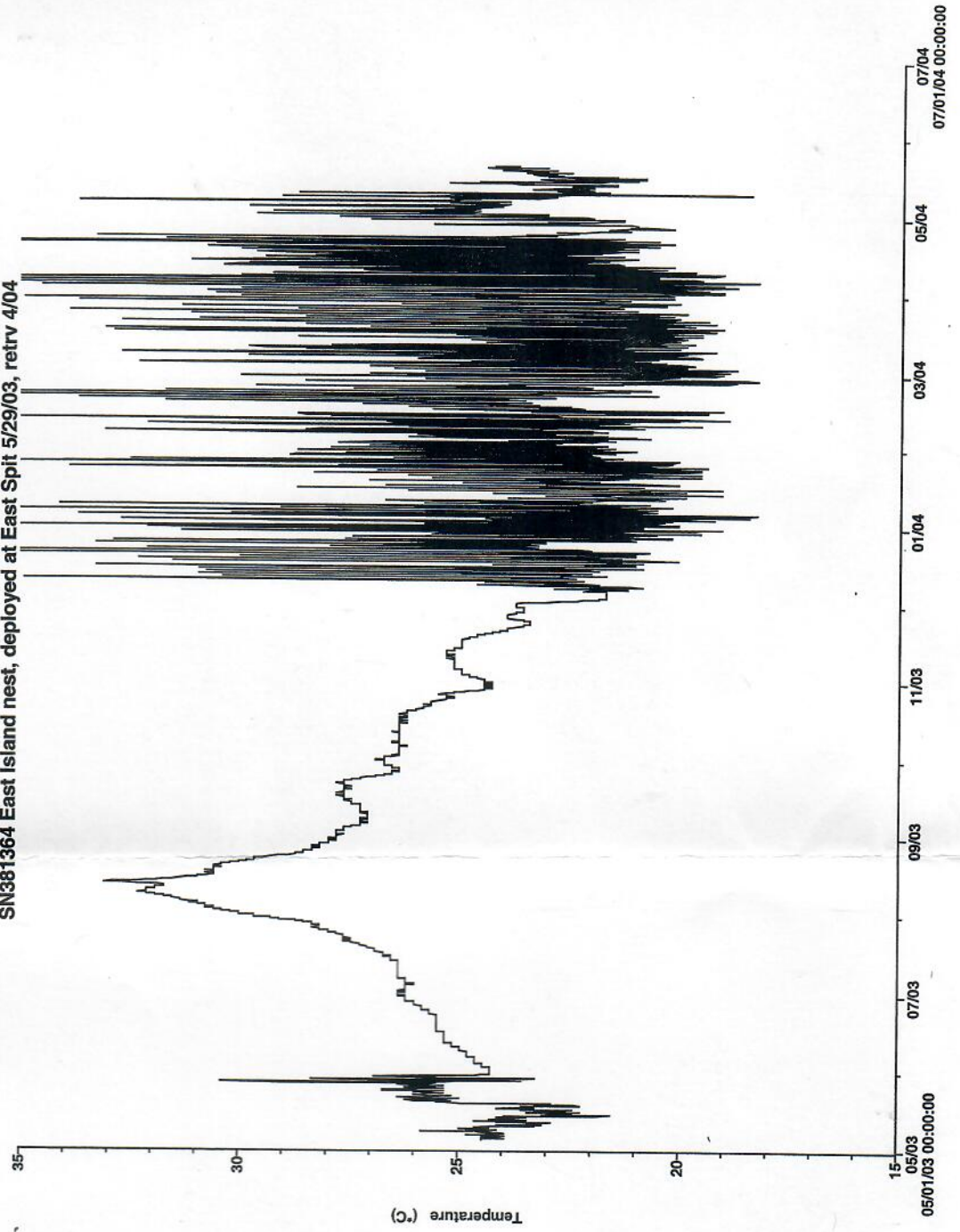


IS/AND =  
SN198448 Deployed 5/19/00\_FFS\_found\_4/04 on beach  
UN known where re deployed

Sent to them  
have no record  
of location for  
#198448. (where  
deployed). 44



SN381364 East Island nest, deployed at East Spit 5/29/03, retrv 4/04



Date: Tue, 29 Jun 2004 18:03:12 EDT  
From: Hinwr@aol.com  
To: gbalazs@honlab.nmfs.hawaii.edu  
Subject: hello george

FFS 2004

Hello George

Chris here giving you the update for my last four nights out there, 6/24-6/27. I will heading back out tommorow. I have a shortened stay because Joe was

stuck out there for two extra days last shift.

June 24 there were 41 total turtles, 2 new, 5 nesters, 6 probably, and 7 maybe.

June 25 there were 56 total turtles, 5 new, 7 nesters, 3 probably, and 19 maybe.

June 26 there were 60 total turtles, 3 new, 9 nesters, 2 probably, and 12 maybe.

June 27 there were 62 total turtles, 3 new, 7 nesters, 9 probably, and 10 maybe.

So we did break the record while I was just out there, which is exciting. But the numbers of new have dropped off dramatically, as expected. Hopefully we

will be seeing hatchlings soon. I was keeping an eye out for them while I was out there. The moon will be full soon. Could that be the trigger that starts them coming?

That is exciting what will be going on at the Mauna Lani for the 4th of July.

I wish there was a way for us to get a chance to see that. But what we get to experience out here is exchange is very exciting as well. Well hope all is well in Honolulu. I have to get to my data now. We will be in touch soon.  
Aloha, Chris

# Lingle signs off on fishing ban

## Native Hawaiians will still have access rights to NW waters

BY JAMES GONSER

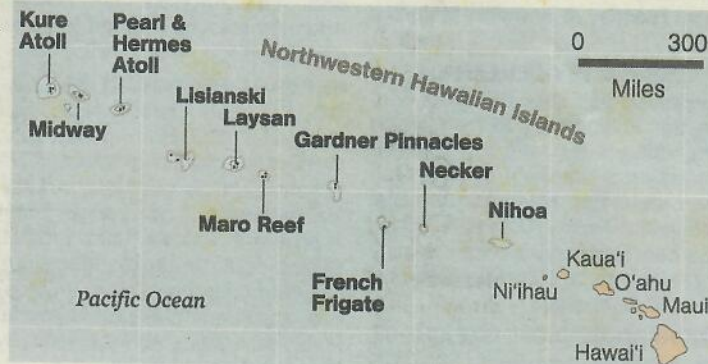
Advertiser Urban Honolulu Writer

New rules for the Northwestern Hawaiian Islands will eliminate all commercial and recreational fishing in state waters along the entire 1,200-mile island chain, but will still allow Native Hawaiians access for cultural practices.

Fishing is still allowed in the much larger federal marine reserve, but the state said it will press to have fishing banned there as well.

"These rules set in motion the most significant marine conservation initiative in the history of Hawai'i by creating the state's largest marine refuge," said Gov. Linda Lingle, who signed the new rules yesterday.

The state rules will take effect sometime in October.



The Honolulu Advertiser

The Northwestern Hawaiian Islands are a chain of small islands, atolls, submerged banks and reefs beginning approximately 120 nautical miles west of the main Hawaiian Islands and stretching northwest. The islands are surrounded by some of the most extensive and healthy coral reefs in the world and are home to more than 7,000 species of marine plants and animals, including the endangered monk seal and green sea turtle.

State waters extend three miles around all the islands and atolls from Nihoa, the tiny island beyond Ni'ihau and Kaua'i, to Kure Atoll, the northernmost land mass in the Hawaiian chain. Midway is not included.

The rules set aside state waters from commercial and recreational fishing, and require an entry permit for all other activities including educational, scientific and cultural.

SEE FISHING, B7

## Fishing

CONTINUED FROM B1

Nine boats now are given permits to fish for 'opakapaka, onaga and other species, mostly in federal waters. The boats bring in between 200,000 and 300,000 pounds of fish a year, or about half this type of fish consumed in Hawai'i. The harvest is valued at about \$1.5 million.

Peter Young, chairman of the state Department of Land and Natural Resources, said the state will ask that all fishing be eliminated from the federal waters as well. Young said he would like to have the fishery totally closed within five years and the permitted boats compensated for their loss.

Veteran commercial fisherman Edward Timoney, who holds one of the permits for the area, said he would have to find a new fishery or be forced out of business if the fishing ban is ex-

tended to federal waters.

"That's my whole income," said Timoney, who operates his boat "Laysan" out of Kewalo Basin. "There is nothing wrong with the fishery. I believe it would be a terrible waste of the resource."

Mark Mitsuyasu, fisheries program officer for the Western Pacific Fishery Management Council, said the council was asked to draft regulations for the federal refuge area and recommend that the bottom fish industry remain open while other fisheries, such as lobster and precious corals, be scientifically studied.

"It is a controlled and managed fishery," Mitsuyasu said. "The stock is healthy and has very little impact to the environment."

Young said the proposed rules are in response to conservation measures requested in public comments. Two rounds of public hearings were held statewide over three years, with more than 25,000 comments received.

"We are going to encourage

the sanctuary program to follow the lead of the state and prohibit fishing in federal waters as well," Young said. "The broader bigger message is it is important for us to have a place in the world where we don't take something. This will be the largest marine protected area in the world, land or marine based, where there is no extraction."

Lingle said the area has been overfished for a long time and if the fisheries are protected, there will be a "dramatic increase" in the fish population. "It will have a large positive impact in the number of fish in the main Hawaiian Islands if that area is left in peace," she said.

The state also has applied to create a World Heritage site under U.N. rules because of its natural and cultural significance.

"We commend the state for incorporating Native Hawaiian rights of access and cultural practice in the very protective refuge for state waters in the Northwestern Hawaiian Islands," said Vicky Holt Taka-

mine, president of the Ilio'u-laokalani Coalition. "The Native Hawaiian community has been deeply involved in this process and has repeatedly recommended an end to commercial fishing (in the) Northwestern Hawaiian Islands."

Rep. Ed Case introduced a bill in the U.S. Congress three months ago to extend complete refuge protection for the entire area. Case said the bill needs to pass to create a true wildlife refuge in the area and he appreciates Lingle's "effective endorsement."

"I welcome that endorsement," Case said. "I need her to communicate her endorsement on behalf of the state government to Congress."

"There should be some wild places left in this world where humans don't tread too much, where wild species can survive and prosper."

Reach James Gonser at 535-2431 or [jgonser@honoluluadvertiser.com](mailto:jgonser@honoluluadvertiser.com).

## FY2005- Fourth Quarter Milestone Report

**Submitted by:** George Balazs, Pacific Islands Fisheries Science Center

**Title of Accomplishment/Milestone:** Evaluate remote camera monitoring system for monitoring nesting sea turtles.

**Current Status:** Completed

**Background Information:** Annual estimates of the number of green turtles nesting at East Island, French Frigate Shoals (FFS) in the remote Northwestern Hawaiian Islands have been made since 1973. Field personnel are needed to accomplish the difficult task of censusing turtles that come ashore each night over a 35-45 day monitoring period. Sampling is conducted collaboratively by the PIFSC and the U.S. Fish and Wildlife Service. Survey statistics are extrapolated by the PIFSC to estimate the total number of nesting females during the survey year. The estimates of nesting activity at East Island are used to provide an index of abundance for the Hawaiian green turtle population and to monitor population trends and recovery status. East Island is a 12-acre sandbar located 6 miles from the nearest human-inhabited island (Tern) within the FFS. A 50-ft wooden Loran antenna pole exists on East Island as a landmark and reminder of U.S. Coast Guard personnel serving there during World War II. This pole offers outstanding opportunities envisioned by the PIFSC for remote-controlled video and still cameras to lessen personnel resources in monitoring seasonal breeding turtles, monk seals, and seabirds dependent upon East Island.

**Purpose of Activity:** To experimentally investigate and evaluate the use of birds-eye-view interactive cameras installed on East Island to provide a quantitative basis for monitoring the abundance of the Hawaiian green turtle population in support of the Recovery Plan for U.S. Pacific Populations of the Green Turtle.

**Description of Accomplishment and Significant Results:** Two remote-controlled weatherproof cameras have been installed on an existing 50-ft pole at East Island, FFS, in collaboration with SeeMore Wildlife Systems with the approval and assistance of the U.S. Fish and Wildlife Service. Phase I of the project accomplished a streaming video link from East Island 6 miles to Tern Island. Phase II accomplished installation of a 2.4 meter satellite dish on Tern Island transmitting video to Honolulu (and potentially worldwide). Partial monitoring of nesting and basking turtle activity occurred in April-June 2005. However, technical problems of a resolvable nature limited full use of the system. Phase III, scheduled for March 2006, will provide improvements and upgrades including installation of a thermal imaging camera.

**Significance of Accomplishment:** FFS and other islands and reefs of the isolated Northwestern Hawaiian Islands are currently of great national interest as areas for increased protection and study of marine life including seabirds, turtles, and monk seals. Remote camera viewing technology offers considerable potential for non-invasive wildlife monitoring, as well as "showcasing" the area through real-time global internet video for educational outreach. The accomplishments of the Milestone provide solid first steps to achieve these goals.

**Key Contact:** George Balazs (808) 983-5733

Date: Wed, 26 May 2004 10:06:37 -1000  
From: George H. Balazs <gbalazs@honlab.nmfs.hawaii.edu>  
To: French Frigate Shoals <ffs2570@wcclp.com>  
Subject: Re: fyi - TERRIFIC turtle stuff

*Reduce FFS*

Thanks Suzanne, Very much appreciated. Good to know that L4 is focused now on East! She will be there when my folks get there. NOTE- this is the turtle that Jennifer's team already got the TDR from when basking on Tern. The box is empty there is nothing to get from it. Rather she has new TDR's I sent and my boys will take them to East and when L4 is encountered they will put a new one into the box. Ok? Ok.

How on earth could any seals use East with all the turtles? Why on earth would any seals want to use East with all the turtles? And with that many turtles why on earth would anyone apply for the Turtle Tech East island job! :) My Best, George

On Wed, 26 May 2004, French Frigate Shoals wrote:

> Hey George, just wanted to let you know that we had the highest count of  
> turtles yet on East island May 22 with a total of 251 hauled out on the  
> beach and many more in the water.  
>  
> Also, L4 was seen on East that same day, but we were unable to retrieve it's  
> transmitter because it was in the water.  
>  
> Just thought you'd like to know. Cheers, suz  
>

### 40 Frozen Hatchlings

Fedexed to Thane Wibbels 10/4/04

From George Balazs

(7 packets of hatchlings)

*Marine Turtle Research  
NOAA NMFS PIFSC  
2570 Dole Street  
Honolulu, Hawaii 96822*

Date	Place	Number of hatchlings
9/22/2004	Tern Island	6
9/23/2004	Tern Island	5
9/24/2004	Tern Island	4
9/25/2004	Tern Island	2
9/25/2004	East Island	4 (same nest)
9/25/2004	East Island	9 (same nest)
9/26/2004	Tern Island	10

Date: Tue, 11 May 2004 05:47:48 -0400  
From: Ursula Keuper-Bennett <howzit@turtles.org>  
To: George H. Balazs <gbalazs@honlab.nmfs.hawaii.edu>  
Subject: Re: Maui girls going in the Other Direction!

Here's the list again --as you requested. With NAMES.

**413E2F0063**

U164 Lomi (means to scratch). This was the very big female who landed right beside you when you were attaching TDR's and let you touch/scratch her. We have great pics of that.

**4135752F0F**

U362 Kimo. Sighted Honokowai 1992, 93. HUGE tumours. Resighted 1996 much improved. Sighted at Alaeloa 2003. Most profound regression case in our database.

**2205000A7A OR 413E2A7B2E**

U359 Mendelbrot. Did she nest at East last summer? Because I've analyzed video to Aug 25th am and still haven't got her at Honokowai. Know since 1993.

**413E2C271E**

U521 Tutu. Most number of migrations in our log. Known since 1990 and should definitely be there now.

**413E136B68**

U249 We call her U249 because she does not interact with us. I think she can't stand humans. She used to leave at the sight of us. Now she stays but we keep WIDE BERTH.

**NO PIT TAGS**

F765 McTaggart. Known since 1992. We know she migrates but a couple times she wasn't recorded at East. Maybe she nests somewhere else.

**4136372172**

408C The "Hawes Turtle". A tourist-diver once sent pics to us a long time ago. Turns out he sighted this turtle before us back in 1992. We haven't seen her since 2000. But we believe she lives further north.

**435B273052**

605C We call her "605C". She never returned your TDR!

**435C5A1B0D**

436C Akahale meaning cautious/careful. Took us a long time to get her to trust us. Not around last summer. But didn't hear she'd nested.

**500F213567**

612C Hulali --shining/glittering. She is all speckles. Not sighted last summer but not sure why.

Note last two turtles known only 2002 --although sighted regularly that year, not necessarily Honokowai honu.

Also. We don't expect to see Ho'oulu this summer either. But you-all stopped tagging so we can't tell you who to watch out for.

This was FUN to write out so thanks for asking for names.

-----  
At 05:26 AM 5/3/2004 -1000, George H. Balazs wrote:

>no don't please leave out the names, the names give them life and  
>character, and actually Help. So, please add them. Take your time I'll  
>be gone a week. If you need me write to my hotmail account.

> **-SAME AS ABOVE-**

>On Mon, 3 May 2004, Ursula Keuper-Bennett wrote:

>  
>> OK, sir. Here's our shopping list. I left out the names to make it easier  
>> for your people. I hope this list is complete.

>> **413E2F0063**

>> U164

Date: Tue, 11 May 2004 12:48:24 -0400  
From: Ursula Keuper-Bennett <howzit@turtles.org>  
To: George H. Balazs <gbalazs@honlab.nmfs.hawaii.edu>  
Subject: Re: Maui girls going in the Other Direction!

Is this better?

~~413E2F0063~~  
U164 Lomi (at Honokowai 2003)  
~~407731497B~~  
U162 Kimo (at Alaeoloa 2003)  
~~2205000A7A~~ or ~~413E2A7B2E~~  
U359 Mendelbrot  
~~413E2C271E~~  
U521 Tutu (at Honokowai 2003)  
~~413E136B68~~  
U249 U249 (at Honokowai 2003)  
~~NO PIT TAGS~~  
F765 McTaggart (at Honokowai 2003)  
~~4136372172~~  
408C Hawes Turtle  
~~435B273052~~  
605C 605C (at Honokowai 2003)  
~~435C5A1B0D~~  
436C Akehele  
~~500F213567~~  
612C Hulali

-----  
At 06:22 AM 5/11/2004 -1000, you wrote:

>not it!

>  
>  
>  
>  
>  
>  
>  
>  
>  
>  
>  
>  
>  
>  
>  
>  
>

```
*****
*           George H. Balazs, Leader           *
* Marine Turtle Research Program             *
* National Marine Fisheries Service          *
* Pacific Islands Fisheries Science Center*
* Honolulu Laboratory                        *
* 2570 Dole Street                          *
* Honolulu, Hawaii 96822-2396 USA           *
* Tel: (808) 983-5733                       *
* Fax: (808) 983-2902                       *
* gbalazs@honlab.nmfs.hawaii.edu           *
*****
```



Date: Mon, 10 May 2004 08:19:36 -1000  
From: French Frigate Shoals <ffs2570@wcclp.com>  
To: George Balazs <gbalazs@honlab.nmfs.hawaii.edu>  
Subject: L12 sighting May 5

[ The following text is in the "iso-8859-1" character set. ]  
[ Your display is set for the "US-ASCII" character set. ]  
[ Some characters may be displayed incorrectly. ]

Hi George, just wanted to let you know that we saw L12 again, here's the details:

L12 sighted on Litte Gin, May 5 at 1358.

There were at least 40 turtles on the island that day.

Cheer, suzanne

FFS

f Honlab

Date: Mon, 10 May 2004 08:19:36 -1000  
From: French Frigate Shoals <ffs2570@wcclp.com>  
To: George Balazs <gbalazs@honlab.nmfs.hawaii.edu>  
Subject: L12 sighting May 5

[ The following text is in the "iso-8859-1" character set. ]  
[ Your display is set for the "US-ASCII" character set. ]  
[ Some characters may be displayed incorrectly. ]

Hi George, just wanted to let you know that we saw L12 again, here's the details:

L12 sighted on Litte Gin, May 5 at 1358.

There were at least 40 turtles on the island that day.

Cheer, .suzanne

Date: Fri, 7 May 2004 08:38:10 -1000  
From: Shawn Murakawa <smurakaw@honlab.nmfs.hawaii.edu>  
To: George H. Balazs <gbalazs@honlab.nmfs.hawaii.edu>  
Cc: George Balazs <itsahonuworldinhawaii@hotmail.com>  
Subject: TDR serial # for Tern

L4 = 0390879  
New = 0490052

\*\*\*\*\*

Date: Tue, 4 May 2004 19:32:42 -1000  
From: French Frigate Shoals <ffs2570@wccclp.com>  
To: George Balazs <gbalazs@honlab.nmfs.hawaii.edu>  
Subject: L7 sighting April 21

[ The following text is in the "iso-8859-1" character set. ]  
[ Your display is set for the "US-ASCII" character set. ]  
[ Some characters may be displayed incorrectly. ]

Hi George, Suzanne here, I just wanted to get back to you with your question regarding the L7 sighting.

Seen: April 21, Trig island off south side, was just starting to enter water when I saw him at approximately 1340. TDR looked in good condition as did turtle.

We haven't seen him since, but are looking. Also wanted to let you know we saw 103 turtles on beach at Whaleskate April 30 and got photos for you. Aaron is going to put together a photo disk for you that we've taken at several of the islands.

---

Assume you heard from Jenn today regarding your turtle cam, if not she will be writing you. Aaron and I will work with them to set it up. We will let you know how it goes.

Cheers, suz

Date: Mon, 26 Jan 2004 21:31:28 EST  
From: Hinwr@aol.com  
To: gbalazs@honlab.nmfs.hawaii.edu  
Subject: Re: Turtle recapture F938, F910, F-911

Hi George,

Here is the info on the flipper tagged turtle:

SCL=57.1

CCL=61.0

Date captured: 1/10/04

Jennifer

---

Date: Fri, 30 Apr 2004 09:01:06 -1000  
From: French Frigate Shoals <ffs2570@wcclp.com>  
To: gbalazs@honlab.nmfs.hawaii.edu  
Subject: from aaron

[ The following text is in the "iso-8859-1" character set. ]  
[ Your display is set for the "US-ASCII" character set. ]  
[ Some characters may be displayed incorrectly. ]

*FFS*

Hey George,

- Saw turtle L12 on Little Gin on the 28th. Got a couple digital pics.
- Found another tidbit datalogger, didn't get an answer from you about sending them back so I'll just give them to F&W to deal with.

Aaron

*J. Hawley  
Books*

List of Stowaway and Tidbit Dataloggers Set at 3.2 hr Intervals Deployed at FFS, June 2003

*for  
ERW & Joe*

ID #	Deployment Time	Deployment Location	Unit Type
71054			SA
155020			SA
77501			SA
141198			SA
266016			SA
144073			SA
464580			SA
243573			SA
243570			SA
1409			SA
557684			TB
557680			TB
557682			TB
557681			TB
557683			TB
557671			TB
557674			TB
383500			TB
381364			TB
557677			TB
383507			TB
557685			TB

SA = Stowaway

TB = Tidbit

Date: Mon, 2 Jun 2003 06:34:53 -1000  
From: Shandell Eames <seames@honlab.nmfs.hawaii.edu>  
To: George Balazs <gbalazs@honlab.nmfs.hawaii.edu>  
Subject: Tern and East Island dataloggers

I have it written down in the logbook which one is which.

Tern1: 141198  
Tern2: 144073  
Tern3: 557684  
Tern4: 383507

East1: 77501  
East2: 155020  
East3: 557685  
East4: 557671

```
*****  
*                               *  
*           Shandell Eames      *  
* JIMAR/NMFS Sea Turtle Research Technician *  
*           Marine Turtle Research Program *  
*           National Marine Fisheries Service *  
* Pacific Islands Fisheries Science Center *  
*           Honolulu Laboratory  *  
*           2570 Dole Street     *  
*           Honolulu, Hawaii 96822-2396 *  
*           Tel: (808) 983-5747 / Fax: 983-2902 *  
*           seames@honlab.nmfs.hawaii.edu *  
*****
```



Date: Sat, 17 Jan 2004 21:23:34 -1000  
From: George H. Balazs <gbalazs@honlab.nmfs.hawaii.edu>  
To: Shawn Murakawa <smurakaw@honlab.nmfs.hawaii.edu>  
Subject: Re: Message from George (fwd)

Please need historical when time allows.

>  
> ----- Forwarded message -----  
> Date: Fri, 16 Jan 2004 18:51:41 EST  
> From: Hinwr@aol.com  
> To: smurakaw@honlab.nmfs.hawaii.edu  
> Subject: Re: Message from George (fwd)  
>  
> Hi Shawn,  
>  
> Here are the metal tag numbers:  
> Left Front Flipper = F-938  
> Right Front Flipper = F-910  
> Left Hind Flipper = F-911  
> No tag in right hind flipper, but there was a well healed tear. Possibly the  
> tag has been torn out.  
>  
> Thank you for the advice on the PIT tagging. We will continue the process.  
> Jennifer  
>

Orig. data did not include  
~~LF~~ F938. I will enter  
it now and leave the  
application date blank.

Historical Information for Turtle Tag F910  
 George H. Balazs  
 PIFSC Marine Turtle Research Program  
 2570 Dole Street  
 Honolulu, Hawaii 98622-2396

Tag Information:

Tag Number	Date	Tag Type	Tag Position
F910	11/14/1996	I681	RFL
F911	11/14/1996	I681	LHF

Date	Type of Encounter	Location	Tumor Rank	Nesting Act	Straight Carapace	Since Last Encounter			Overall			
						Interval	Year	Growth-Rates	Interval	Year	Growth-Rates	
11/14/1996	Near Shore	Term	0	-	44.2	---	---	---	---	---	---	---

Historical Information for Turtle Tag F910  
 George H. Balazs  
 PIFSC Marine Turtle Research Program  
 2570 Dole Street  
 Honolulu, Hawaii 98622-2396

Tag Information:

Tag Number	Date	Tag Type	Tag Position
F910	11/14/1996	I681	RFL
F911	11/14/1996	I681	LHF

Date	Type of Encounter	Location	Tumor Rank	Nesting Act	Curved Carapace	Since Last Encounter			Overall		
						Interval	Year	Growth-Rates	Interval	Year	Growth-Rates
11/14/1996	Near Shore	Term	0	-	47.2	---	---	---	---	---	---



Low priority

Reduce FTS book

Reduce FTS book

LISIANSKI

LI2H24 JH-power probs, our inmrst will be down ths aft, sorry. RE turtle: coll. dupl. samples of muscle (frzn), duodenum, liver, spleen, urin. blad., rt/lt lung, rt eye, whl. heart, columella bones both (frzn) all in 10% fmlin. Also all 4 tags: w-799, w-800, G-248, G-249. Carapce=88x66cm, plstron=74x71cm (lxw) both straight meas. buried as requestd-will get skin a humeri. RE "sick" turt. T3/F limp/lethargic at wash line 4+ hrs. 5/1 may al be same lethargic turt obs. 4/30. No wounds or other signs of illness/abnrmlities. If need be, pass respnce. today 2 Mich at Tern, we'll get via radio. If all well Inmar up tomorrow. Chrs JMH.

TDPs 6/25/90 EAST → 8/2/90 EAST MEETING ← + Past History

05-01-97

SHAWN - I came across my

this (misplaced) IN 94? Lisianski 1996? or 1995 Lisianski and collection

Mortality. Necropsy, etc by 2+ of tissues, etc by Mark Seal people Materials Lisianski. US. record in sent to record link.

George ~ Already made a copy for TDPs. Got I work's report from Gravel. These are yours to keep. Bram

① Do you have info from T. work?

② Tissues given we have from Do you have a copy of (see should)



--Continued  
Historical information--

Date	Type of Encounter	Location	Tumor Score	Nesting Activity	Straight Length	Since Last Encounter		Overall	
						Interval Month	Growth-rates cm/mon	Interval Month	Growth-rates cm/mon
07/18/90	Nesting	East	0	X	---	---	---	---	---
07/19/90	Nesting	East	0	N	---	---	---	---	---
08/02/90	Nesting	East	0	N	---	---	1	0.1	---
05/01/97	Near Shore	Lisianski Island	0	-	88.0	80	6.7	82	6.8

George-

July 14, 1992

Ten more turtles were lost to UFO's. Alyssa had 21 turtles up last night (7/13), ten less than what we have been averaging for the last week. The only possible conclusion we have come up with for our continuous decline in turtles is abduction by aliens while we are sleeping. We are still hoping to establish communications with them so we can try to trade seals for turtles, but so far all attempts have failed. Right now I am reading a book about the people of Mu who came from another universe and settled on earth. I hope to learn something about communicating with extraterrestrials from it but so far have only learned that some people believe some really weird things.

Here are some turtles and the dates they were up:

U227 - 6/7, 6/21

U260 - 6/14, 6/15, 7/8

Our worst tumored turtles are U85, U208, and U236. Here are the dates they were up:

U85 - 5/20, 5/21, 6/3, 6/4, 6/28, 6/29, 7/3

U208 - 6/5, 6/6, 6/11, 6/17, 6/28, 6/29, 6/30, 7/1

U236 - 6/9, 6/12, 6/13, 6/14, 6/15, 6/17, 6/30, 7/2

We are on the lookout for these turtles and will put a special moto on all of them to help identify them while basking. Hopefully one of them will still be here when you come.

The data I am sending you is complete to 7/9/92. Most of it has been proofed by both of us, although there is still a little to go before we are completely caught up. Tell us if there are any more turtles you might want to put a transmitter on and we will keep an eye out for it.

We still have not seen any hatchlings, although we have been going out every evening on tern to look for pre-hatch pits. Hopefully they will start coming out soon. Not much we can do but wait.

A book you should never read while alone on a little island in the middle of the ocean is The Sea will Tell All. It is about the murders on Palmyra island. Alyssa and I both read it. Late at night, on the far side of the island, we see people. We know there is someone out here. We have both seen them. I have tried to confront them by going all around the island hiding below the berm, but so far they have alluded me. If you don't hear from us by the end of the turtle season you will know what has happen.

Everything else is great out here. We are looking forward to Brian coming out and will try not to abuse him too much. Hope you are doing well.

Tim

George-

July 28, 1992

Sorry the last disk was lost. I hope this one gets to you. Brian has been awesome. He has asked to stay on East for eight days instead of the

regular four, and we have reluctantly agreed to extend our vacation. He has totally cleaned the beach of both plastics and glass, piled them in separate piles for burning and recycling, separated the glass by color, and has even cleaned the tent. Tomorrow we are sending a flour sifter over so he can sift the rocks out of the sand to make it easier for the turtles to dig. I have gone over his data with him a couple of times and he seems to have it all under control. It has been nice having him here so we can have a break for a while. The data is coming along well, and will hopefully be completely proofed by the time you get here.

I have double checked the number of times the turtles we are looking for have nested. When I gave you the information over the radio I was looking at all the dates the turtle was on the beach. I had to figure out when the turtle probably nested based on the gaps in the dates. I have gone back to the sightings data and re-checked based on both the dates and activity. The dates the turtles have nested so far are probably:

U-306	6/26, 7/12
U-334	7/11
U-260	6/15, 7/9, 7/21
U-227	6/7, 6/21
U-85	5/21, 6/4, 7/3
U-208	6/6 (maybe), 6/17, 7/1, 7/12, 7/23
U-236	6/17, 7/2

check R 3-4  
or distal  
for 2941

U-306 is the new turtle with tags 7560-7563 from Johnston. U-334 is the turtle with tags 2939 and 2940 from Lisianski. Note that U-208 and U-260 have both been up recently and might have laid. Extra moto's have been put on their carapace.

We are up to moto number 381 now, translating to 351 turtles. Thank you for the extra tags on such short notice. I was not really paying attention to our tag supply since it seemed like we had just received a bunch. Hopefully these will take us to the end of the season.

I saw our first hatchling for tern island tonight (7/27, 1140 hrs). It was fighting a ghost crab by the tennis courts. There was also a dead hatchling near the telephone pole, so I think two nests might have hatched last night. Since we still have not seen any pre-hatch pits I think we are missing them. I am glad you will be here for a while so you can find one for us.

Hope this helps you in your last minute preparations for coming out here. See you in a week.

Tim

George.

The five turtles are from Turner nest #11 laid on 8/10/92 by turtle U-348. I removed the turtles from a pre-hatch pit on 10/19/92. Since the turtles had not hatched yet there are no corresponding egg shells. If you want them please tell me. If you want any more Turners I ~~also~~ must know immediately since there are only two more Turner nests unhatched - one laid on 8/16 by U309 + one laid 8/17 by U-403. I might also be able to get more turtles from U-348's nest if you decide you want more on tomorrow's (10/21) flight.

We had a harder time finding ticks so there are not as many this time. We can collect more at any time if you want them. There are also some aphids in the jar & that were on the same plants as a couple of ticks so I put plants, ticks, + aphids all in the jar.

Sorry about killing the first batch of turtles + ticks. I think I suffocated them either by putting wet sand over them or by having the lid on tight. This time the lid was off + they were placed on top of a wet rag. All seem healthy + active at 0930 on 10/20/92.

I have been going through the turtle data + identifying all the turtles with unknown mototools but that have tags. I have been able to assign mototool numbers to most of them. This will lower our previous estimate of 403 turtles this season. I have also found a couple more mistakes in the data - ~~many~~ misspellings of East + dates ~~not~~ in wrong dates. ~~The dates are~~ If you are doing anything with the data yet I would like to know so we don't do the same things. If you could come up on 10 mags at 7:30 some night ~~we could~~ soon we could discuss it.

Hope the turtles + ticks make it o.k.

Tim

NO

10/92

George.

I got your note yesterday (10/20). It sounds like you have found + corrected the mistakes in prefixes, spellings, etc. I was not aware that mototools U193 + U341 were not used. I will check my field journals + try to find out why.

I am sending you the list I made of unknown moto numbers that I have located numbers for. Many of the UK turtles had LHF tags recorded so I was able to link them together with the motos they were assigned later in the season. There are now nine turtles this season that I ~~did not~~ am not able to assign mototools to. ~~I~~ ~~have~~ U374 and U377 turn out to be the same turtle, so I have erased U374 + called it ~~U377~~ U377 for data purposes. ~~There~~ instead of 376 turtles mototooled there are 375 plus 9 unknowns for a maximum of 384 turtles or east this season.

5 A 384 UK's with numbers after them (UK1 ~~to~~ UK2) are used to show the same turtle with multiple tags. There should now only be ~~two~~ <sup>three</sup> turtles now with unknown motos + multiple tags, one on 6/25, one on 8/30 + one on 9/2 in the ID file.

In places where there are several UK's in a row with the same date, these are different turtles.

Sorry for the problems with the data. If I find any more problems I will keep a record of them on paper, ~~since so you will know what they are~~. I will be proofing the data again soon to make sure the field books + the computer files match. I am ~~not~~ concerned that there were mistakes in prefixes, etc. + hope there are not also mistakes in motos + tag numbers that I have not found.

Hope the hatchlings are O.K. Tell them I say hi.

Jim

p.s. There is still a large female on Tern. Saw her basking 2 days ago. Has no tags. I am doing a ~~walk~~ walk before bed now + hope to see her nest so I can tag her.

From: GeorgeBalazs:Honolulu:NMFS  
To: JAW  
Subj: 1992 nesting data for East Is.

---

I studied the printouts last night and spotted the following for your information:

- 1) Several typos on prefixes of mototool numbers and tags.
- 2) Mototool numbers U30 through U406 were used, excluding U193 and U341. I couldn't locate them, so presumably they weren't engraved. Consequently, 376 turtles were mototooled.
- 3) There are a minimum of 65 turtles with different tag numbers that are designated as UK in the mototool column. I presume UK means no mototool was applied. Of those 65 there are 7 listed as UK1, Uk2, etc. through UK8 (excluding UK6). I'm not certain how they differ, if at all, from UK. I have said a "minimum of 65" because there are several UK's in a row with the same date, and at this point I can't determine if they are the same or different turtles.
- 4) Five of the turtles documented nesting on East were originally mototooled while nesting on Tern during the season. These are specified by a U-suffix, as opposed to the U-prefix for East.
- 5) We have not yet received a) 1992 nesting records for Tern, b) nor the edited nightly summaries for East (number up, number of new ID's etc.).

376  
65  

---

441



July 11, 1991

George Balazs  
National Marine Fisheries Service  
2570 Dole Street  
Honolulu, Hawaii 96822

George,

How is every thing back in civilization? Hopefully as well as here at French Frigate Shoals. This is just a short note to let you know that things here are going well, and that Greg and I doing fine. I recieved the pictures that you sent up and I hope that they were able to be of some use to you. Thank you for sending them back up to me, it is neat to see what pictures were taken because it had been a while.

Enclosed with this letter I have included a copy of the Daily Totals from East Island up to 07-09-91. The data sheets are still being updated and cross checked against the original data sheets and the field notebooks. The first data sheets (Turt ID and Nesting Female Sightings) I sent you on 06-18-91 had a few errors on it, which have since been corrected for. So, I will send you a complete and corrected print out of Turt IDs and Nesting Female Sightings on the next plane I am able to send it out on, which will be the 07-26-91 flight.

I was able to tabulate a few numbers for you from the data we have entered thus far. Greg and I, as of 07-09-91, are on MOTO TOOL number 124 on East Island (We started at number 30) and for Tern Island we are up to number 34 (starting from number 10) excluding one juvenile and one other adult. The number of Old vs. New tags for East Island, out of 89 turtles (two not accounted for), are 42 N : 45 O and for Tern 14 N : 12 O. The Number of Tumor afflicted turtles on East are 11 out of 89 turtles and for Tern there are 8 out of 26. Generally, these tumors are either size 1 or 2, with an exception of one turtle that had 4 tumors of size 2,2,3, and 4. She was spotted on East Island.

Greg and I have begun verrifying tags and making sure that they are applied well and have not begun to be, or are already, embedded and unreadable. We have found a few tags thus far in this situation and have applied new tags in hopes that they will not follow suit.

Another project that we are doing is to see where the turtles nest in the greatest densities. In less than two weeks, it seems evident that the area around the tent (S.W. area of the island) has already become a very dense nesting location. We will continue to monitor this throughout the rest of the season.

We are looking forward to seeing the first nest hatch on East Island soon. The first nest occured on 05-02-91 or 05-03-91. On Tern Island, The first nest weas laid on 04-29-91.

Well, I hope that the information in this letter is enough to keep you abreast of how the season is progressing. Feel free to call anytime you have a spare few minutes for both Greg and I enjoy talking with you and getting feedback. Greg sends his thanks for the paper on "Radio Telemetry". Have a great rest of the summer and am looking forward to talking to you on the radio.

Aloha,

*Ed E. C.*

16 July, 1991

Mr. George H. Balazs  
Marine Mammals and Endangered Species  
Southwest Fisheries Center, Honolulu Lab  
National Marine Fisheries Service  
2570 Dole Street  
Honolulu, Hawaii 96822-2396

Dear George:

Greetings! Hope your summer has been going well. I thought I would take this opportunity to touch base with you, and relate a few points concerning my own observations of green turtle nesting activity at East Island.

Generally speaking, I feel that I am learning a great deal about the behavioral characteristics of nesting sea turtles. Given the extended observation periods that Bob and I are so fortunate to have while we are on East Island, one can't help but strive to understand the interesting biological processes that seem to largely influence the turtle's activities. I am especially captivated by the diurnal migration of basking turtles from the beach into the water, and the subsequent return soon after dawn. I have noticed repeatedly that the females are the first to actively begin leaving the basking beach, soon after the sun has set.

The other day I was able to photograph one of the tumor afflicted females while she was in the final stages of backfilling a nest on East Island. My emphasis was on the tumors she carries at the proximal area of both fore-flippers. Tumor observations have been an area of strong attention, and I believe we may have some data that could be very useful. For example, I observed two very small (< 1 cm) tumors above the eye of one female. They appeared polyp-like and were very red, suggesting that they were highly vascularized. Another time I was examining wounds on the hind flippers of a nesting female, and noticed what distinctly resembled fibropapilloma tissue coming through the tissue at the open wound site. I was not able to get photos of either observation.

To summarize, our field research efforts are going smoothly. I enjoy working with Bob, and feel that we are communicating very well. I look forward to chatting with you on the radio some time at your convenience. Also, in the event that you have the need to fill a position either in the lab or field this Fall, I would like very much to offer my services to you. Thank you for all the training and encouragement, George.

Sincerely,

*Greg C. Spencer*

Gregory C. Spencer  
U.S. Fish and Wildlife Service  
Tern Island, French Frigate Shoals

17 July 91

Hi George!

As usual, another rushed note.

I enclosed the tracings of flippers and some eggshells from a nest which hatched right outside of the barracks. Bob and I were trying to hammer out a method for trying not to have the little things squirm so much. We found it best to do the tracings in as little light as possible! I did not keep copies of the tracings.

I wish you could come out to Tern and see all the activity! Bob is doing a really good job organizing the data. Greg is as enthusiastic as ever - he wears me out!

Aloha

Jennifer

enjoyable one. It was good  
ies of ticks were kind of  
s I've only seen one in the  
were at their peak, they  
ne body builds up an  
I ended up getting sick

LE ID and TURTLE SIGHTINGS.  
ed against the original  
ossible without bringing  
had mentioned in the last  
en cross referenced, so, you  
also enclosed is a current

ings were seen on Tern  
he 15th, the first  
sting to note that the nest  
transplanted earlier in the

st Island, I turned over two  
eared to be a black widow  
hem to Honolulu to determine

e going well otherwise. Greg  
when you have a chance to  
rest of the summer.

ALOHA,

W. E. C.

June 22, 1991

George Balazs  
National Marine Fisheries Service  
2570 Dole Street  
Honolulu, Hawaii 96822

Hi George,

I hope that your trip to the South Pacific was an enjoyable one. It was good to talk to you on Saturday (07-20-91), and the stories of ticks were kind of spooky. At least the worst of them are over now, as I've only seen one in the past two times I've been on East Island. When they were at their peak, they were nasty. I didn't know, but did suspect, that the body builds up an intolerance to the bites. I do believe that is why I ended up getting sick those two times. At least I'm all better now!

Enclosed are copies of updated versions of the TURTLE ID and TURTLE SIGHTINGS. Each one has been cross referenced and double checked against the original data sheets. They are also as far up to date as possible without bringing half full data sheets back from East Island. As I had mentioned in the last letter, the copies I sent you last time had not been cross referenced, so, you can put those in the circular file if you want. Also enclosed is a current list of the daily totals.

A note that might be of interest, the first hatchlings were seen on Tern Island on 07-11-91 and then a few days later, on the 15th, the first hatchlings were seen on East Island. It is interesting to note that the nest that hatched on East Island was one that Greg had transplanted earlier in the season.

When exploring around the mountain of cement on East Island, I turned over two pieces of cement and under each one, found what appeared to be a black widow spider. So, I collected them and we are sending them to Honolulu to determine just what they are.

That is about all the news on this end, things are going well otherwise. Greg and I are both looking forward to talking to you when you have a chance to come up on the radio. Take care and have a good rest of the summer.

ALOHA,

*Robert E. C.*

8-8:30  
MWF

25 April 1991

George Balazs:

Just a note to send along with the latest draft of the frigatebird/turtle hatchling paper. It made it through the FWS editor with only a few editorial changes. I guess we are now ready to submit it to the Journal (will be submitted the first week of May).

As for the Tern Island turtle nesting data we have, we are planning to put it into a publishable form after the 1991 season. This will give us 5 years of good data (1987 through 1991) plus a little from 1986. Again, we would like to team up with you on this paper. Your experience at FFS observing nesting activity on Tern Island and knowledge of the literature and turtles are essential to producing a good product. The 1991 season should come to an end in December (last hatchlings emerge), I am planning on having a rough draft of the Tern Island stuff completed in January 1992. I will then send it to you for your input as well as whomever we decide to add to the author list. Tentatively, I'm thinking of including Glynnis (she's still very much interested in turtles and was involved in some of the Tern Island data collection over the last three years) and Jennifer Megyesi (also interested in turtles, contributed to data collection at Tern Island, and she will be doing most of the 1991 Tern Island turtle work). Hopefully, these two will be acceptable to you.

I will be leaving Tern Island on 22 May (Transferring to Red Rock Lakes NWR in western Montana). I have ten days to get the St. Louis, buy some kind of vehicle, pack up some junk at my parent's house and drive to Red Rock Lakes so I will only have a brief 2 day stay in Honolulu to take care of a thousand loose ends. If there is anything you think we need to cover before my departure, please let me know. Otherwise, I will keep in contact through the postal system. Tern Island will be left in Jennifer's capable hands. She is very much interested in continuing the turtle work. Although no longer at Tern I remain obligated and dedicated to getting the last five years of data published.

As of 25 April, there has been no nesting activity at FFS. The number of adults in the waters around Tern is increasing daily and we have observed pairs copulating. The first nests should be within the next week or so. We are getting Greg geared-up and will start moving camp gear to East Island this weekend.

Thanks for all the help you have given us here at FFS!

Sincerely,

*Kenneth Northam*

p.s. I don't know my new address yet. I will let you know when I get settled in.

12 JULY 91

George,

thanks so much for your frequent calls and information - it's very helpful to have your support. We especially enjoyed the video tape of Greg and Bob tagging. We have been teasing them non-stop.

I have one question for you. In the recovery tables, there is a cross-reference sheet that has every entry listed according to tag, so when I find a tag, I look there to find the entry number. We have had 23 turtles come up with old tags which are not listed. What does this mean? Were they just tagged? I have the list and I can send it to you.

Also, on tracing flippers, do we need to know which  $\sigma^x$  laid the nest, and do we take curved and straight carapace length or just curved with the calipers?

Our first nest hatched on Tern last night. It must have been a small hatch, because I could only find one track (!). We have chosen 3 nights as our interval before digging up nests which have hatched. We'll talk to you Saturday!

Jennifer

Received 7/2/92

George,

Hi, how are things in Honolulu? French Frigate Shoals is wonderful. Sunsets are still beautiful and the pink elephants are extremely friendly, who could ask for more?

Turtles are going wild. The record this year is 60 in one night. That occurred twice last week. We are now on moto # 310 and are still getting new turtles every night. Alyssa is so excited about getting over 300 turtles motored (we started on #30) that she has tagged and motored two males this week. I do not think she is tagging other species yet, but if the seal people start complaining about moto numbers on their seals we might have to give her a break.

You asked how many new turtles we have had this year with no tags from previous years. I have gone through the file and counted 130 new turtles for this year. That is a maximum since I counted any turtle with no old tags, even though we might not have had a chance yet to check RFL and LFL positions and all they have is a new hind tag. I am sending the list I have made of the new turtles moto numbers.

Thanks for the new tags and pliers. We ran out two days after they arrived. I will send some old pliers back but will also keep a couple since we are still using a strip of A series tags on tern island.

I understand that you are sending someone up to help us out in July. That is good because we need some time to get the computer files proofed. We have been having problems with the computer eating our data and have gotten behind in proofing everything. I think today, with much help from Paul Sievert, we finally got the bug out of the data and hopefully will not have any more problems. It will be nice to have some time to play catch-up. Our time on tern never seems to be enough to get everything done. It is always such a relief to get back on East where computers are forbidden.

The tumor turtle study is not doing so well, both to the fortunate lack of tumored turtles and the unfortunate digging up of a lot of our stakes. We have 11 tumored turtles but only five nests marked with control nests. Some questions I have are: How big a priority is it to see tumored turtles nest? Turtle walks sometimes are taking over two hours and we have not been keeping real close track of what the tumored turts are doing. Do you want us to watch them closer or is it OK to just see them on the normal turtle walks? How far away from the tumored nest can the control nest be? How long a time from the tumored turt. laying do we have to find a control nest. Which takes priority in finding a control nest, distance or time? i.e. if a tumored turt lays where very few turtles lay, should we wait till someone lays nearby or should we find a control nest further away?

We have not seen any hatchlings yet. Our first nest on East was on May 2 so we are hoping to start seeing them soon. Do you want flipper tracings this year? There are a couple of artist in the group that will probably enjoy helping if you do.

There have been two UFO sightings on East, both by Alyssa. The first sighting was on June 11th at 2:10 AM. She said it had flashing red lights and flew right over the island but did not land. The second one was on June 23. She didn't see it but we know one came and took 30 turtles since I had 60 turtles up on the 22nd but we transferred and she had only 28 on the 23rd and hasn't had more than 33 in the last four nights. If they come back we will see if they would give us back the turtles and take some seals instead. Don't tell Bill Gilmartin. He might get upset if he knew.



When are you coming up here to put radio packs on the turtles? Will you be needing help from us or will someone be coming with you or do you not need any help at all? I think both of us would like to see what you do just for the experience of it. It will also be good to have you look over what we have done just to know if there is anything we should be doing differently. I don't think there is but knowing will be good.

I am putting the data we have so far on this disk. It is not all edited because of the problems we have been having with the computer but it will give you a good idea of what we have so far. If you see anything we are doing wrong please let us know and we will try and fix it. One question I have about the ID data is over new or old tags. We have been calling tags new if we applied them that night, which is what I thought Bob said. Recently re-reading the SOP it says new tags are any tag applied during the season. Please verify which is correct.

Sorry for so many questions but they are mostly small things that I have been worrying about. I feel we have things pretty well under control and now that the computer is hopefully clean we won't have too hard a time getting caught up with our proofing. Alyssa has worked out great. We get along well and have had no problems working together. Thank you for keeping in touch over the radio. We have not had any major problems but it is good to talk about our minor ones on a regular basis. Hope you are doing well in Honolulu. Come and visit sometime soon.

Tim Clark

George,

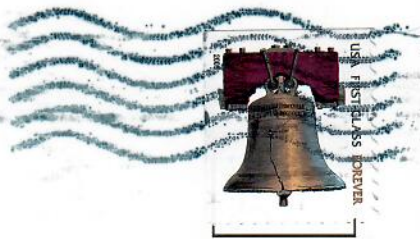
This is just a brief note to append what Tim wrote. First of all, I am not tagging males, I just moto-tooled one - once - on accident! I just have a couple of things to add to Tim's letter. The first is that I would like to know is when you are coming out here to put the satellite receivers on the turtles. The other is a note on the tumored turtles. The number of tumored turtles has almost doubled in the past two weeks; the current number being 15. Amy (of the NMFS seal team) found some pictures of turtles with tumors for Tim to see. They are in black and white, but very helpful.

I would like to thank you for the frequent phone patches to my family. It is wonderful to be able to talk to them while out here. I would also like to let you know that my camera was indeed on the Cromwell tucked away in the chief scientist's room for safe-keeping. Almost too safe! Well, that is it for now. I am really enjoying this summer and am so glad I got the opportunity to do this. Thanks for all your encouragement.

Alyssa Ward



Midway Atoll National Wildlife Refuge and Battle of Midway National Memorial is today home to many rare and unique species including the famous Gooney Bird. In June of 1942 the Battle of Midway was one of the most decisive battles of World War II. Aerial Photo shot by Cynthia Vanderlip 1998.



DEAR GEORGE,  
JUST A SHORT NOTE TO THANK  
YOU FOR THE WONDERFUL  
T-SHIRT; IT WILL BRING  
BACK SPECIAL MEMORIES  
EVERY TIME I WEAR IT...

8 @ 8 RULES!!

↑

THANK YOU,

HAHA... FOR EVERYTHING.

GEORGE BALAZS

210 PACIFIC ISLANDS FISHERIES  
SCIENCE CENTER

2570 DOLE STREET

HONOLULU, HI, 96822

