

Living tags = autografting: What to look for

Compiled by Jennifer Lynch Jun 25, 2020 from information given by
George Balazs www.GeorgeH.Balazs.com

How are living tags typically performed?

- <http://www.seaturtle.org/tagging/living.shtml>
- <http://www.seaturtle.org/mtn/archives/mtn82/mtn82p1b.shtml>
- <http://www.seaturtle.org/mtn/archives/mtn98/mtn98p5.shtml>

When and how were living tags used in Hawaiian green turtles?

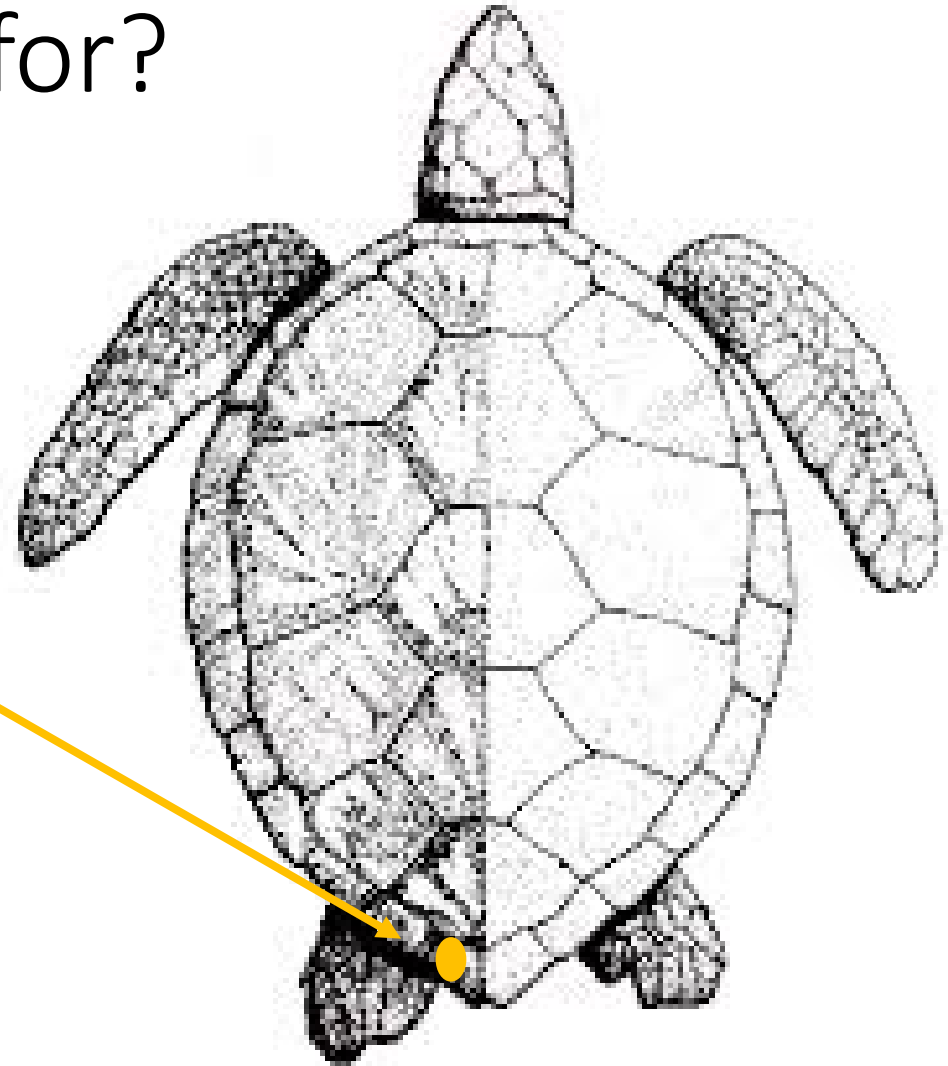
- [Hendrickson and Hendrickson \(1980\) Living Tags for Sea Turtles. SWFC Report 80-17C.](#)
 - Hatchlings from French Frigate Shoals to Sea Life Park.
 - 63 turtles were controls, not autografted
 - More given reversed-plug grafts (living tags) on last left marginal scute except for 2 turtles (2nd to last, left marginal scute)
- [<https://georgehbalazs.com/wp-content/uploads/2019/05/TAG-NOS-SIZES-WEIGHTS-OF-CAPTIVE-REARED-GREEN-TURTLES-RELEASED-IN-SEPTEMBER-1981-1.pdf>](#)
 - Turtles were captive-reared for research at Sea Life park for 1 y, flipper tagged and released 175 across MHI and FFS

How successful was the Hawaiian green turtle 1980 living tag project at re-sighting?

- <https://georgehbalazs.com/himb-historical/most-amazing-green-turtle-in-the-world/>
 - None of the autografted turtles has been seen again, **let's try to find them!**
 - One of the 175 released turtles were seen again. This link shows Maui Girl's story.
 - She was a control turtle, not autografted, released from Hilo.
 - Her flipper tag from 1981 (5690) survived until 2000 when seen nesting in Lahaina
 - She continued nesting there every 2-3 years up to 2014.
- https://georgehbalazs.com/wp-content/uploads/2018/11/41_VanHoutan_etal_2014_AFR_Hawaiian_Greens-1.pdf
 - Other young turtles, from Sea Life Park activities, flipper tagged (not part of the auto-grafting experiment), and released have been re-sighted. Evidence is in this paper.

If we want to re-sight the 1980 autografted turtles, what do we look for?

- These would be 40 year old turtles, so adult size range.
- Could be basking, swimming, nesting, or stranded.
- Look for a lighter colored section on the last left (or 2nd to last left) marginal scute (see diagram).
- The light colored section can look like a full moon or a shooting star.
- Photos from these turtles at 1 year of age are not yet available, but George is looking for them.



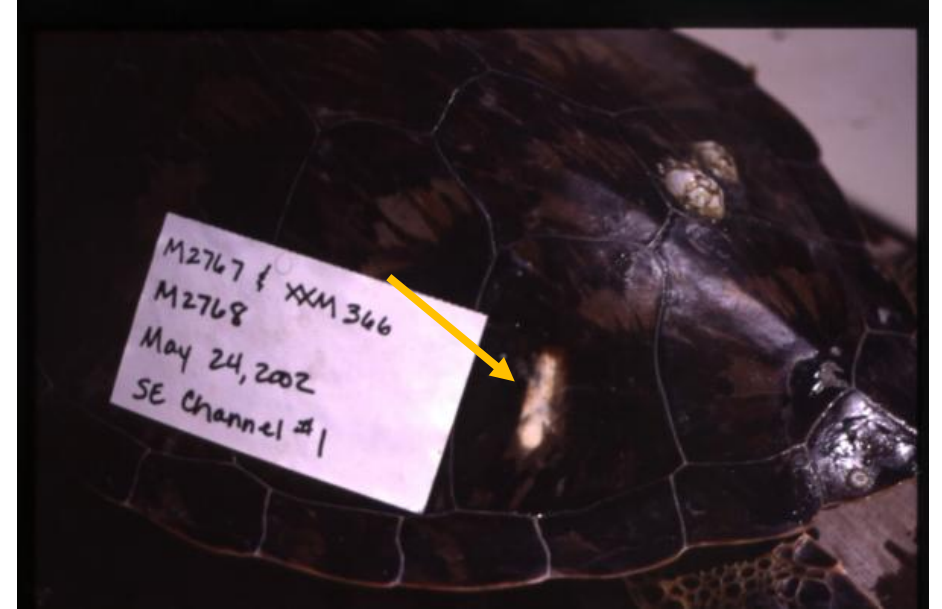
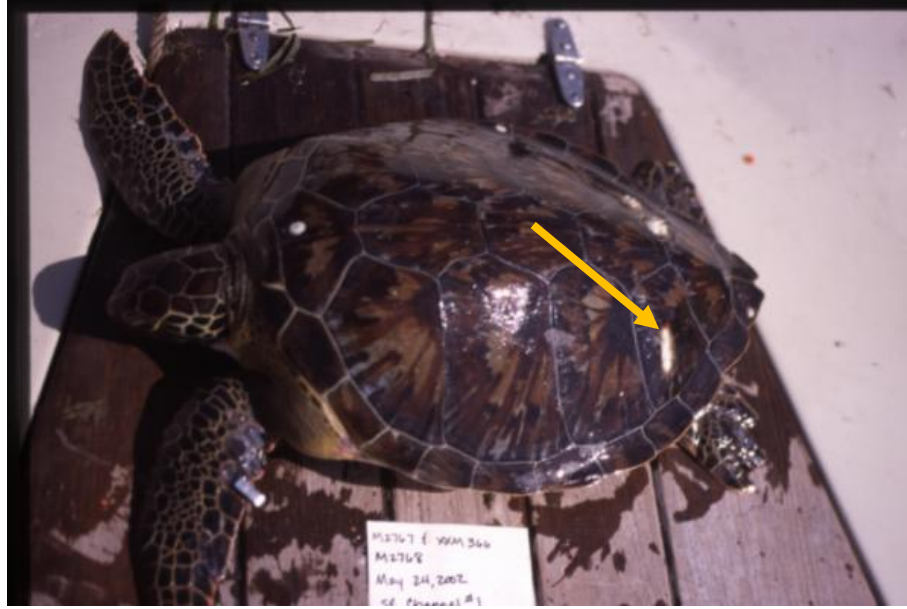
Living tag photos from projects elsewhere around the world can be found here as a guide, but realize these are not in the same scute as the 1980 Hawaiian green turtle living tags.

- <http://www.seaturtle.org/imagelib/?cat=521&thumb=1>

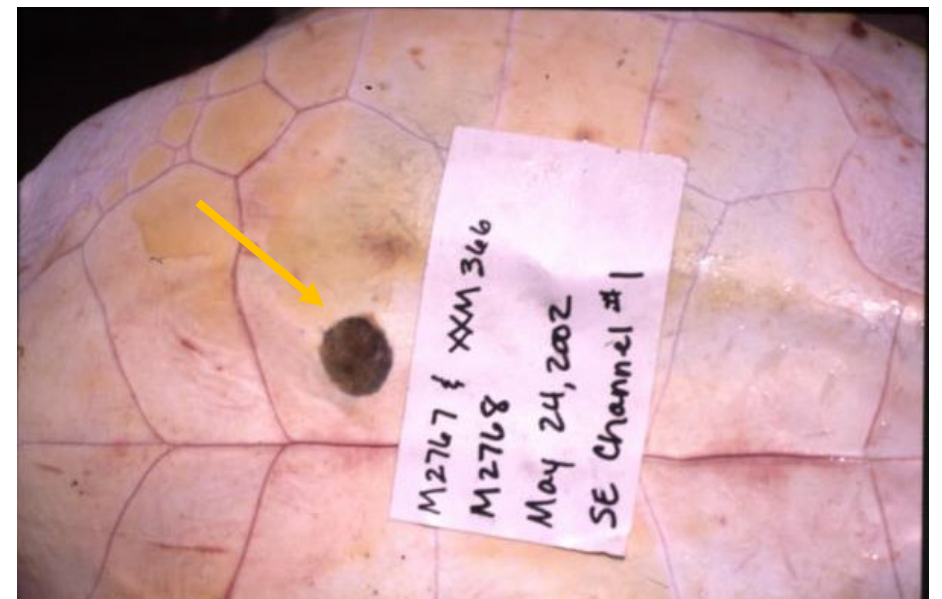
Search by Keyword: <input type="text"/>		Search <input type="button" value="Search"/>		Per Page: 12	Sort by: Most Active
 <p>juvenil de tortuga verde con marca viva</p> <p>User: Roberto Herrera-Pavon</p> <p>Views: 1139</p> <p>Date: 6/23/2011</p> <p>Filesize: 2388.9k (1704 X 2272)</p> <p>No comments</p>	 <p>LK Nester with Living Tag</p> <p>User: Cynthia Rubio</p> <p>Views: 627</p> <p>Date: 8/7/2005</p> <p>Filesize: 273.1k (1600 X 1200)</p> <p>No comments</p>	 <p>LK Nester with Living Tag</p> <p>User: Cynthia Rubio</p> <p>Views: 636</p> <p>Date: 8/7/2005</p> <p>Filesize: 302.6k (1600 X 1200)</p> <p>No comments</p>	 <p>Living tag on Green Sea turtle Carapace</p> <p>User: Florida Coop Unit</p> <p>Views: 1335</p> <p>Date: 3/4/2003</p> <p>Filesize: 257.3k (1380 X 920)</p> <p>1 comments, last by April D. Norem</p>		
 <p>Cayman Turtle Farm living tag</p> <p>User: Janice Blumenthal</p> <p>Views: 1575</p> <p>Date: 11/11/2003</p> <p>Filesize: 198.6k (286 X 432)</p> <p>No comments</p>	 <p>Lepidochelys kempii with living tag</p> <p>User: Michael Coyne</p> <p>Views: 1697</p> <p>Date: 3/4/2003</p> <p>Filesize: 262.1k (1950 X 1267)</p> <p>No comments</p>	 <p>Close-up of living tag on left pectoral</p> <p>User: Florida Coop Unit</p> <p>Views: 1505</p> <p>Date: 3/4/2003</p> <p>Filesize: 239.7k (1360 X 940)</p> <p>No comments</p>	 <p>Living Tag on left pectoral</p> <p>User: Florida Coop Unit</p> <p>Views: 883</p> <p>Date: 3/4/2003</p> <p>Filesize: 233.1k (1380 X 920)</p> <p>No comments</p>		
 <p>Close-up of living tag on left 4th costal (pleural)</p> <p>User: Florida Coop Unit</p> <p>Views: 1005</p> <p>Date: 3/4/2003</p>					

A closer look at Green turtles that have grown with living tags on seaturtle.org

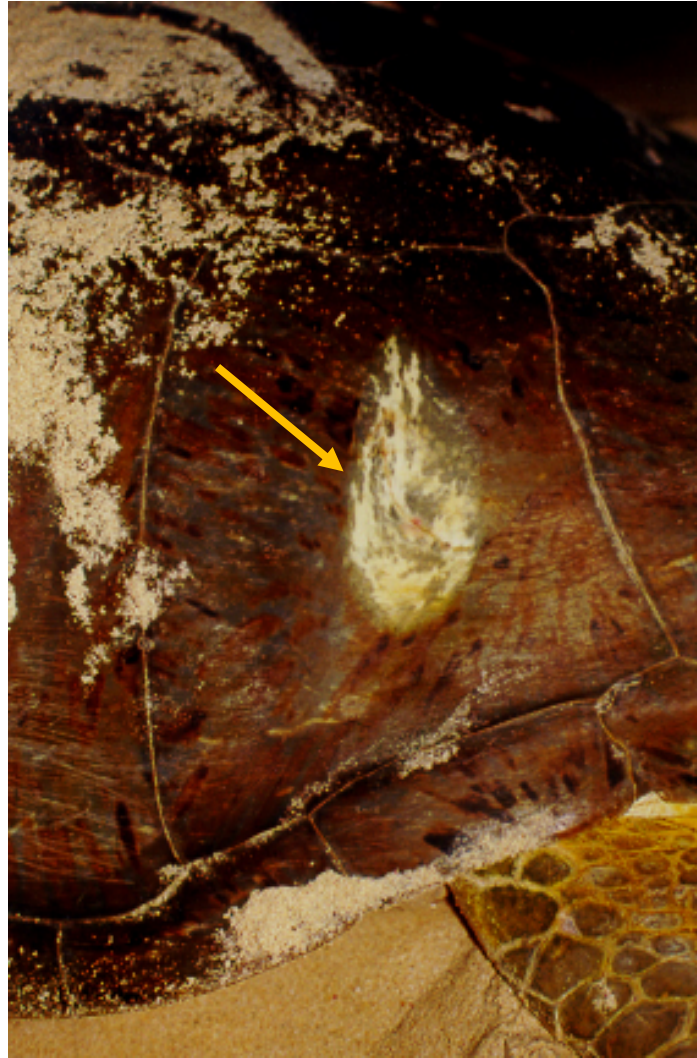
Spot on
carapace will
be lighter



Spot on
plastron will
be darker
(flipping over
live turtles is
not
suggested)



Additional sea turtle living tag images on seaturtle.org



Kemp's ridley living tag images from seaturtle.org



Kemp's ridley living tag images from seaturtle.org

