

2012

2012 FEBRUARY VISIT 2012

Photo Album

Notes:

005494

09/10/2012



Notes:

005494

09/10/2012



Notes:

005494

09/10/2012



Notes:

005494

09/10/2012



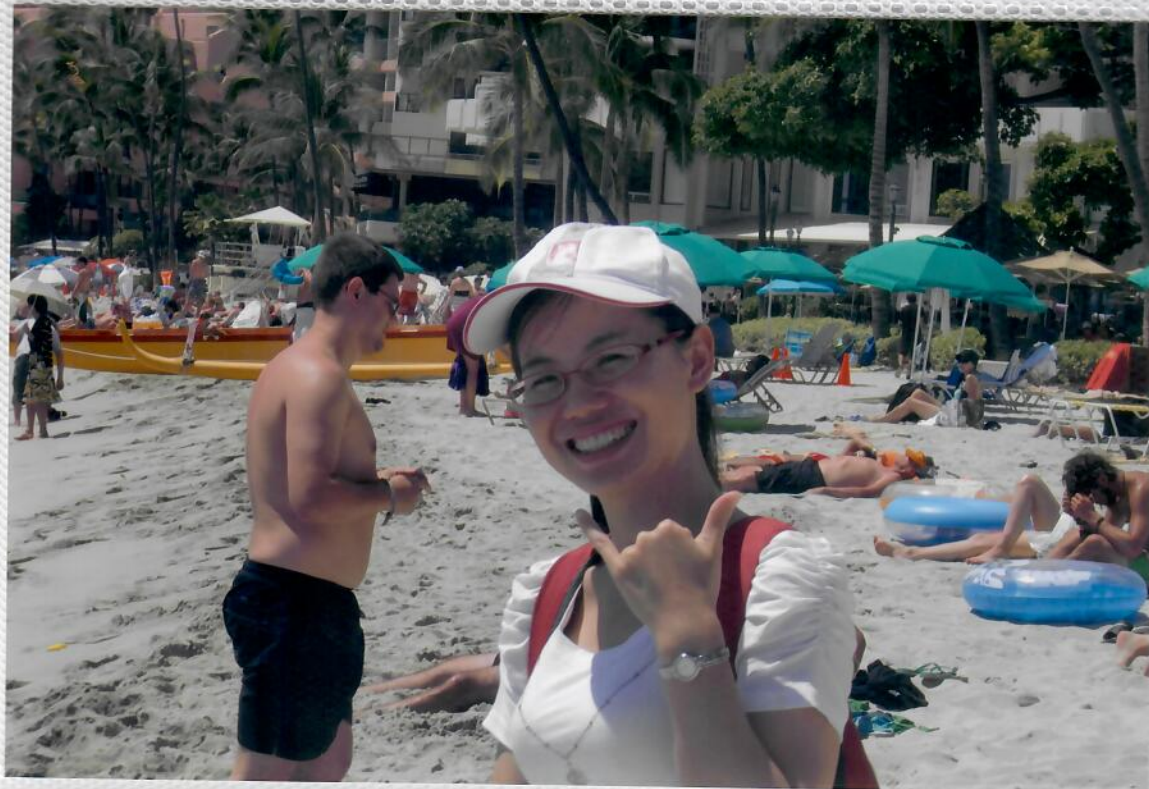















GREEN SEA TURTLES (Honu)

Hawaii's Watchable Wildlife


There are 16 species of marine turtles in the world. Only the Hawaiian monk seal and the Hawaiian monk seal are native to the Hawaiian Islands. The green sea turtle, found on every island, is a common sight throughout the Hawaiian Islands. The green sea turtle feeds on seaweed, algae, and other marine plants. It is also known to feed on sea urchins. It is also known to feed on sea urchins.


Many species of sea turtles found in U.S. territorial waters have been designated as threatened or endangered and are protected under the Endangered Species Act. The threatened Hawaiian green sea turtle is listed as "endangered" under the Act. The Hawaiian green sea turtle population has declined because of many factors, including: loss of nesting sites, loss of nesting sites, loss of nesting sites, and loss of nesting sites.





Feeding Tips for Non-Resident Visitors

- Do not touch or feed the turtles.
- Do not touch or feed the turtles.
- Do not touch or feed the turtles.
- Do not touch or feed the turtles.









NOAA Fisheries - Pacific Islands Regional Office

HAWAII Hawaii's Tourism Authority

U.S. Fish & Wildlife Service

Produced by the Hawaii Department of Land and Natural Resources

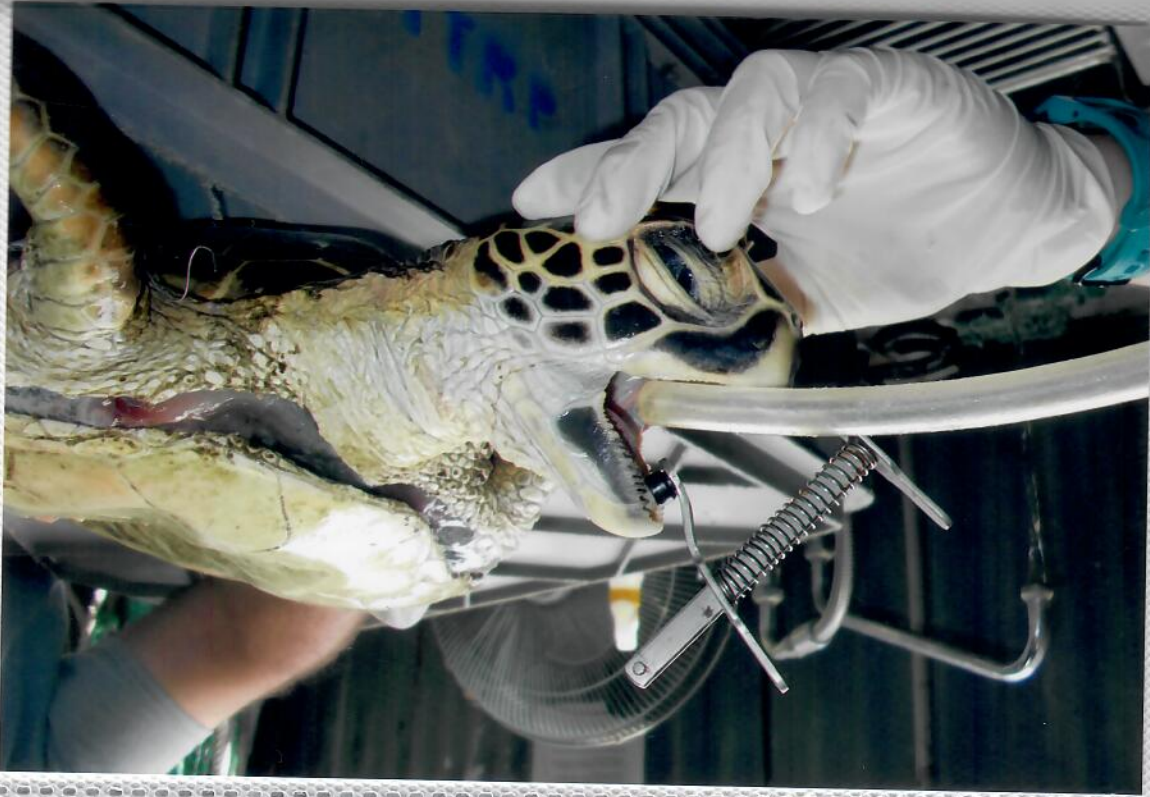
The Division of Wildlife

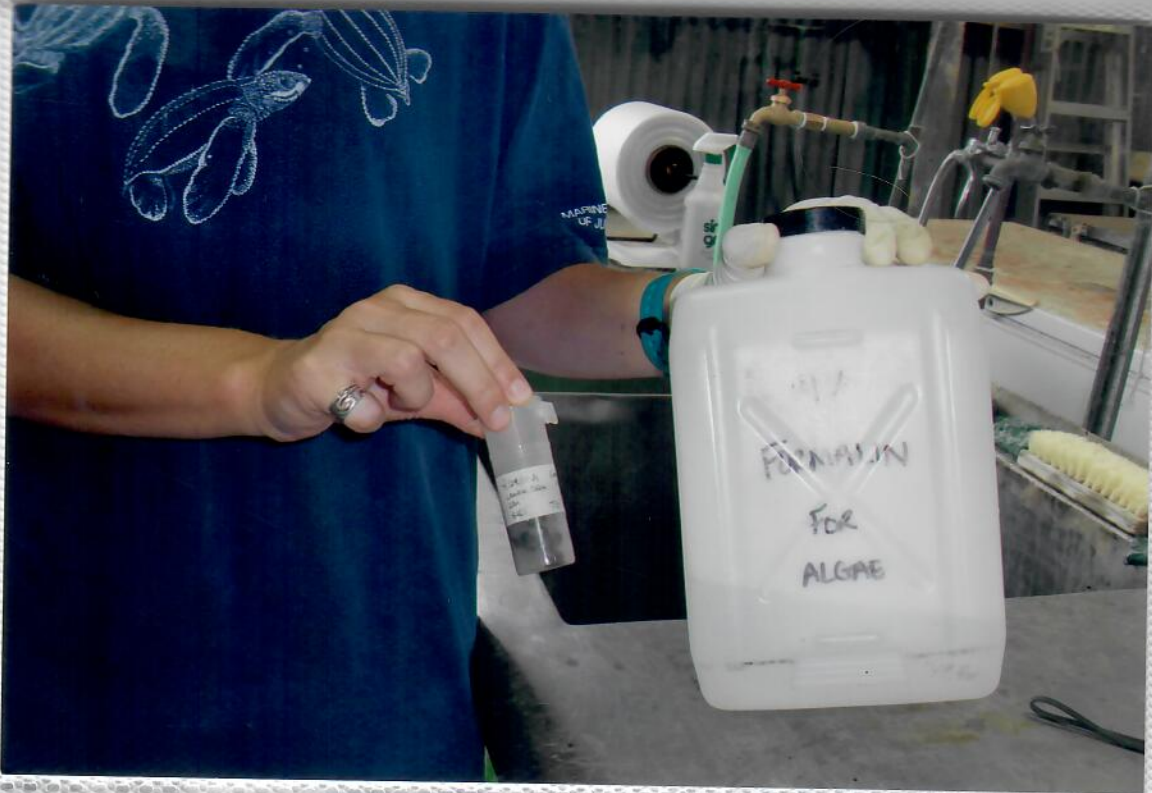


















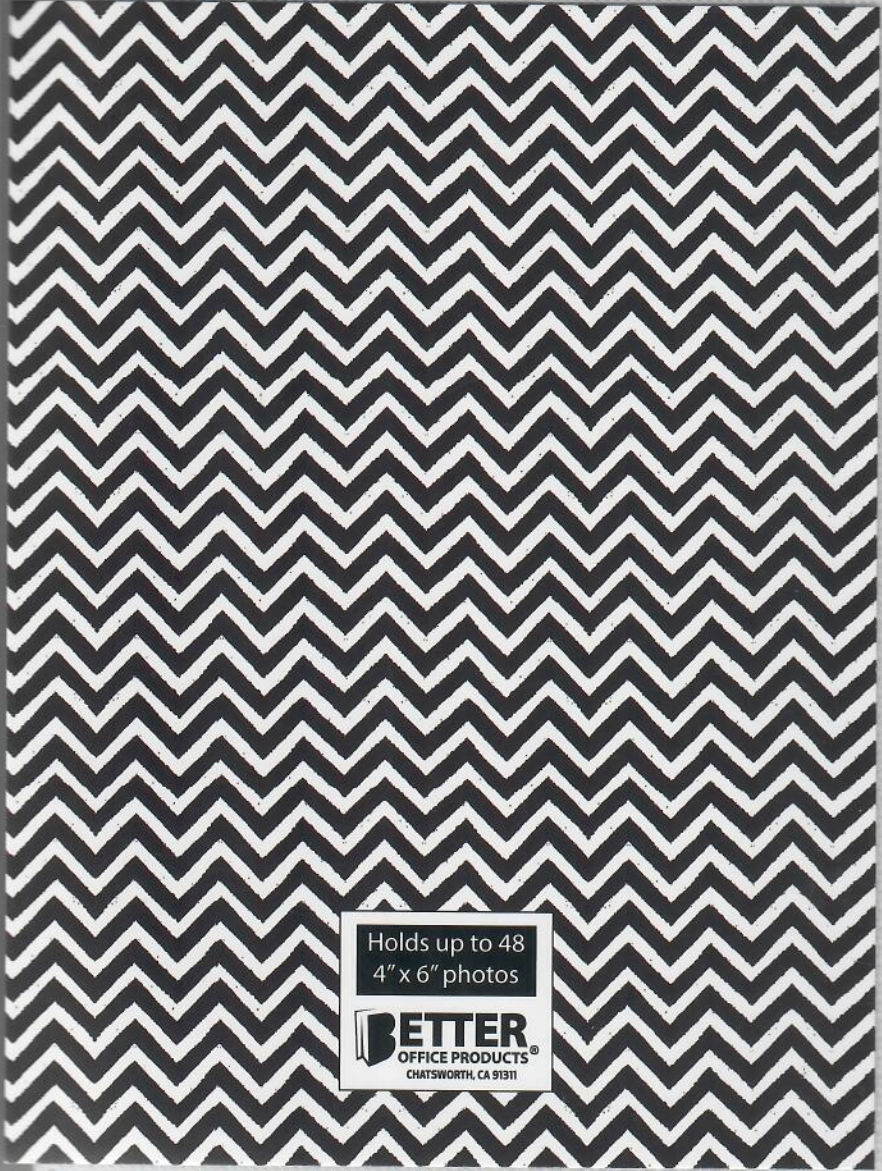












Holds up to 48
4" x 6" photos

BETTER
OFFICE PRODUCTS®
CHATSWORTH, CA 91311