

157° 20' E

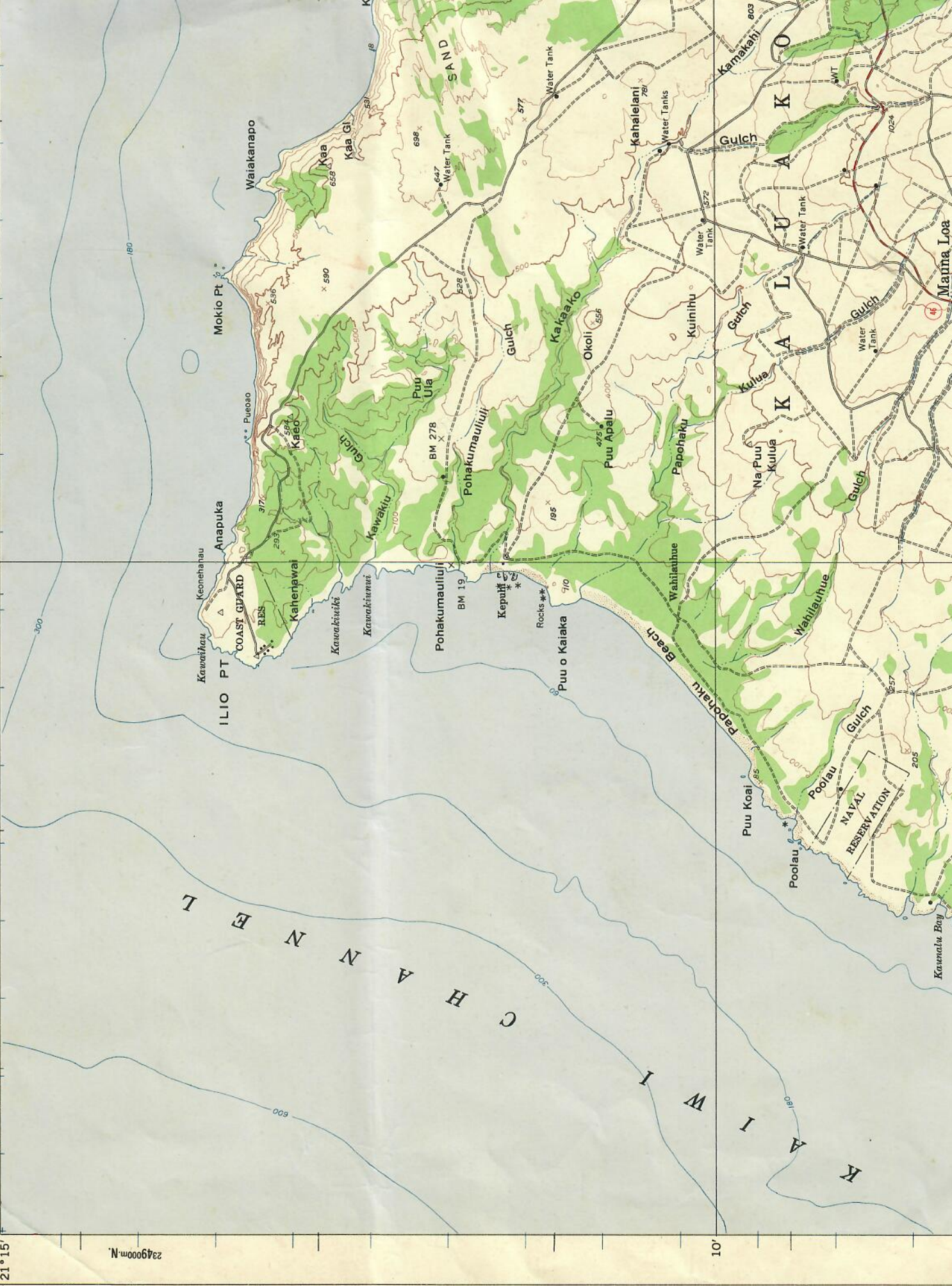
15'

157° 15' E

2349000m N

01

KAWAIKIWI CHANNEL



157°00

PACIFIC

5'

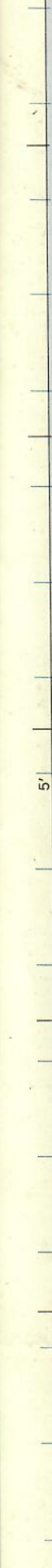
300

600

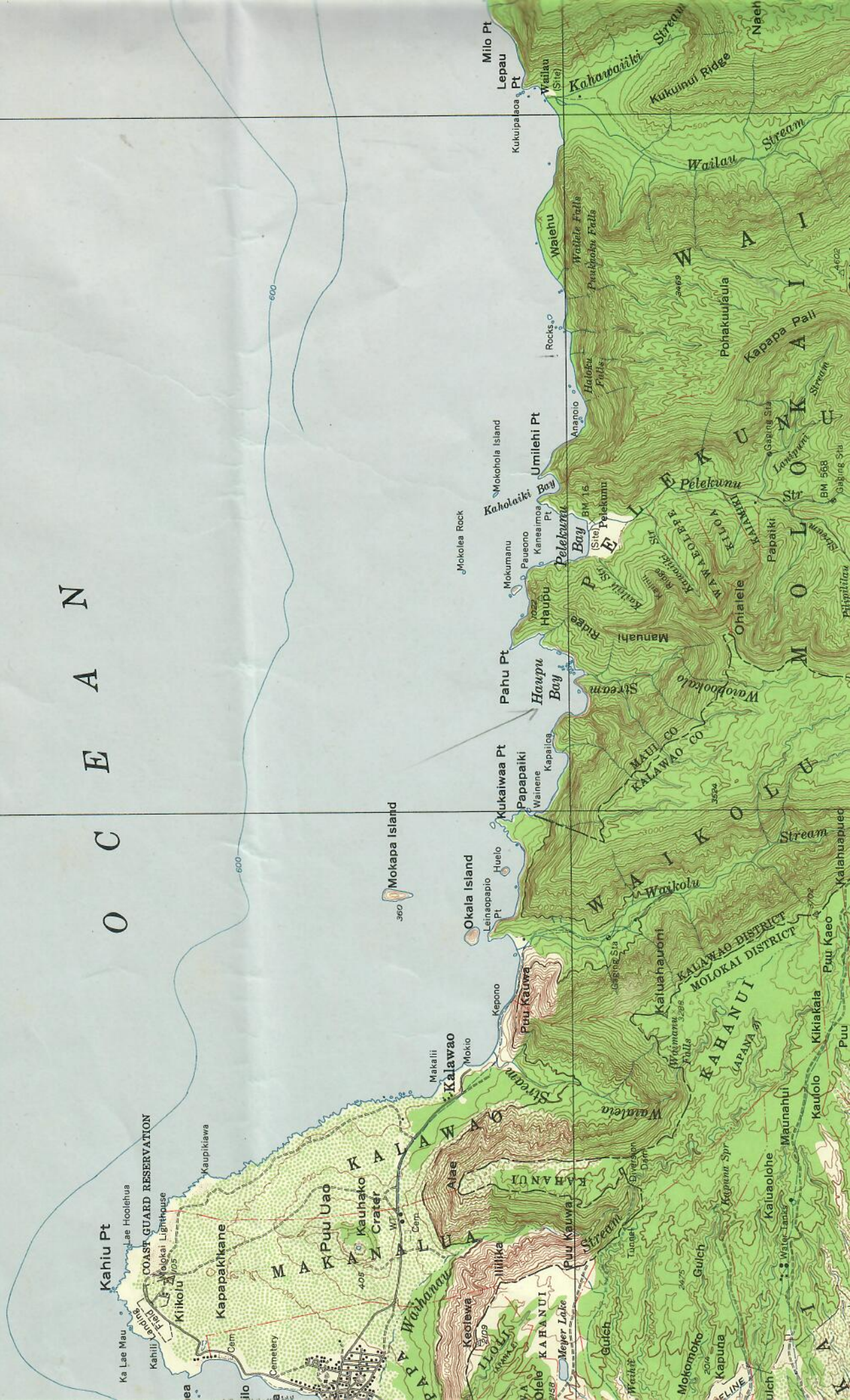
800

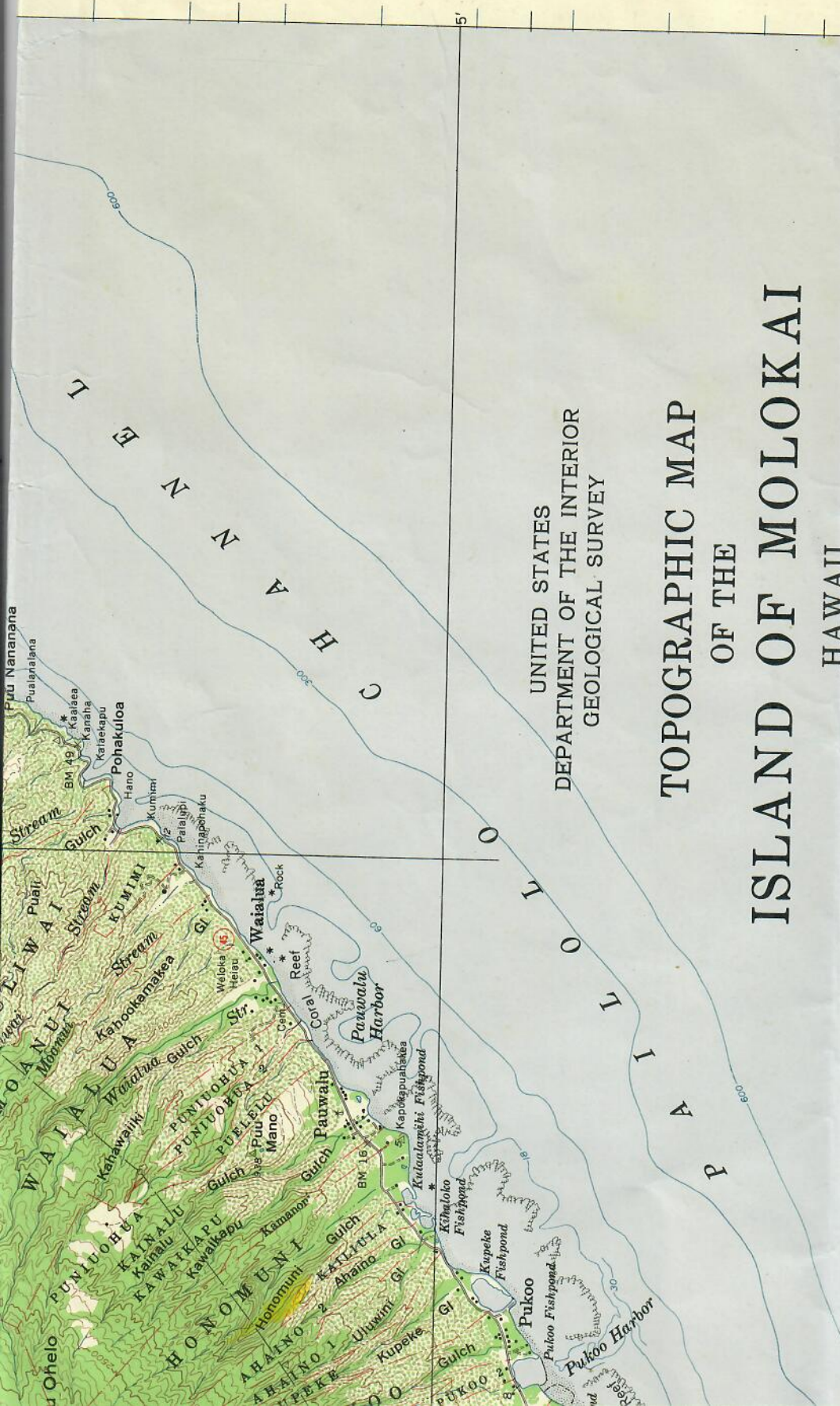
300

800



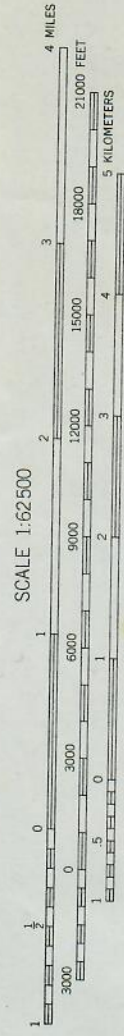
O C E A N





UNITED STATES
DEPARTMENT OF THE INTERIOR
GEOLOGICAL SURVEY

TOPOGRAPHIC MAP
OF THE
ISLAND OF MOLOKAI
HAWAII

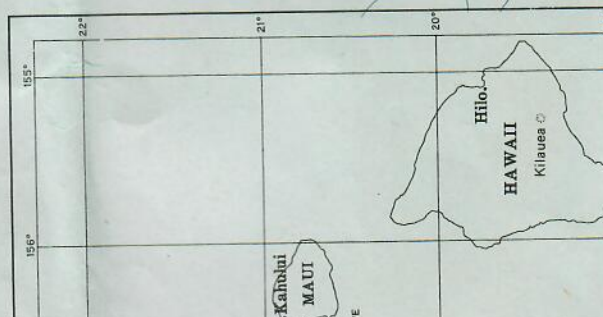


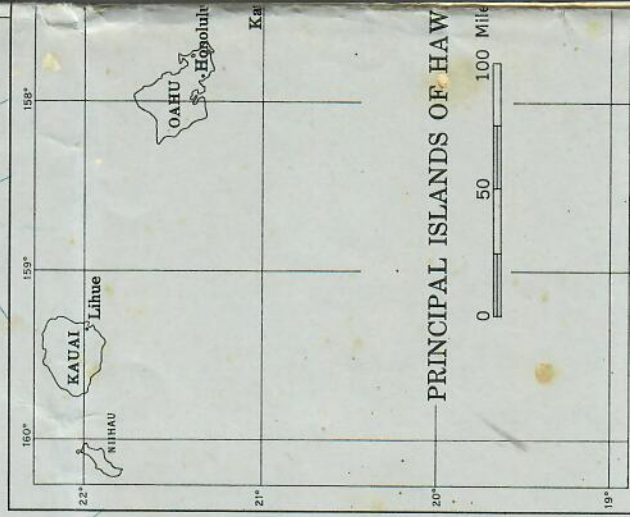
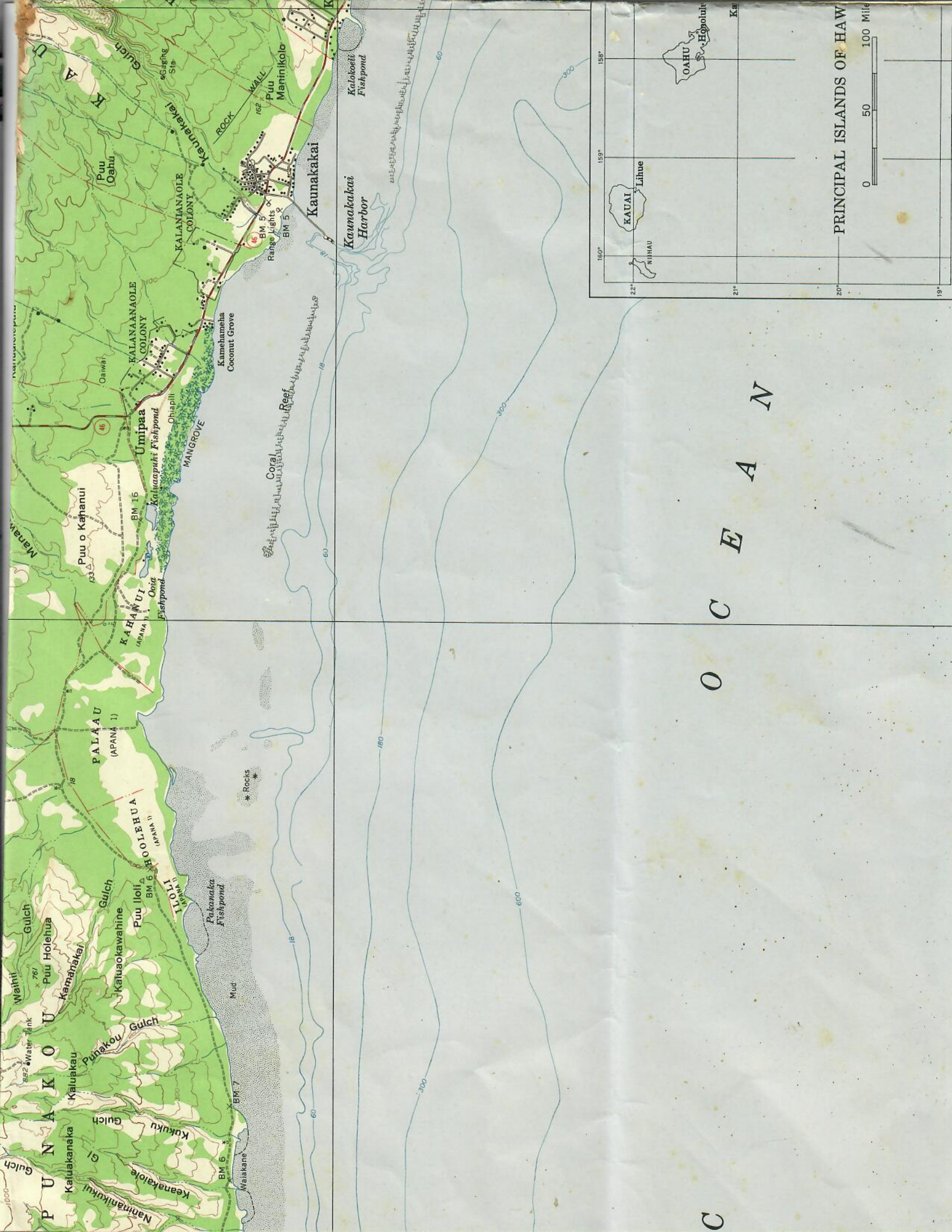
ROAD CLASSIFICATION
Medium-duty ————
Light-duty ————
Unimproved dirt - - - - -
State Route ○

This island also covered by 1:24,000-scale maps of Halawa, Kama lo Kaunakakai, Molokai Airport, and Ilio Point quadrangles, surveyed 1952
N2100—W15640/15 X 40



K A L A H E I N I





C
O
C
E
A
N



P A C I F I C I S L A N D S

Mapped, edited, and published by the Geological Survey
 Control by USGS, USC&GS, and Hawaiian Territorial Survey
 Compiled in 1959 from 1:24 000-scale maps of Halawa,
 Kamalo, Kaunakakai, Molokai Airport, and Ilio Point
 7.5 minute quadrangles, surveyed 1952
 Topography from aerial photographs by photogrammetric methods
 Aerial photographs taken 1950. Field check 1952
 Hydrography compiled from USC&GS charts 4130, 4120, and 4121
 Polyconic projection. Old Hawaiian datum
 10,000-foot grid based on Hawaiian coordinate system, zone 2

250 000
FEET

5'

157° 20'
21° 15'

234900m N

15'

