

GB-204

8 July 1978

Adult mortality, Laysan

Padina crassa Yamada

Pseudobryopsis oahuensis Gilbert

Microdictyon japonicum Setchell

Spyridia filamentosa (Wulfen) Harvey

NWHI 2 - ALL SAMPLES
COLLECTED BY G.H. BALAZS HINB
IDS BY DENNIS RUSSELL

GB-204

8 July 1978

Adult mortality, Laysan

Padina crassa Yamada

Pseudobryopsis oahuensis Gilbert

Microdictyon japonicum Setchell

Spyridia filamentosa (Wulfen) Harvey



GB-204 8 July 1978
Adult mortality, Laysan
Padina crassa Yamada
Pseudobryopsis oahuensis Gilbert
Microdictyon japonicum Setchell
Spyridia filamentosa (Wulf.) Harv.

MARO REEF

August 1977

Dictyota acutiloba J. Agardh



MARO REEF

August 1977

Cladophora socialis var *hawaiiiana* Brand
MSD 28451d

MARO REEF

August 1977

Sargassum
MSD 28451b



MARO REEF

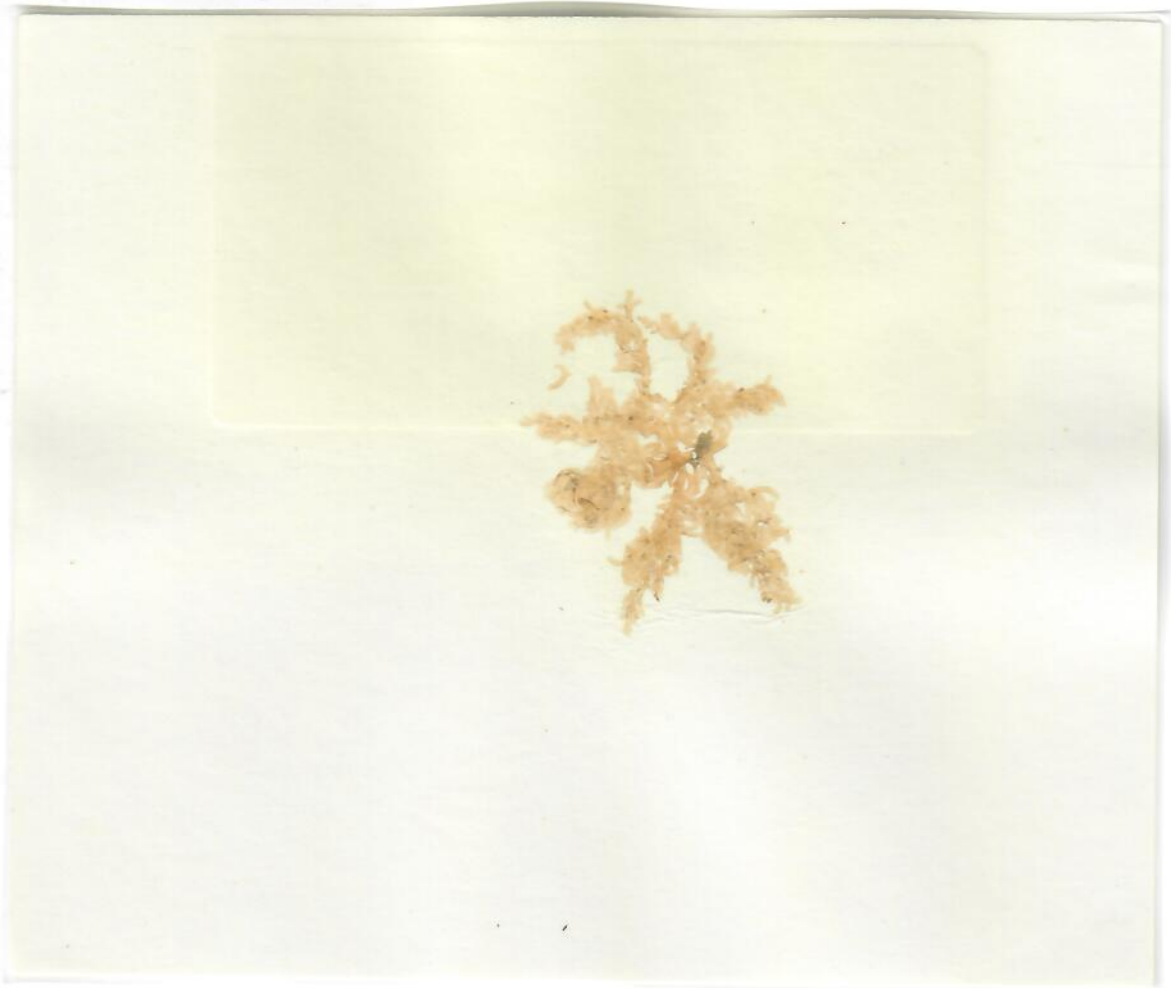
August 1977

Padina crassa Yamada
MSD 28451a

MARO REEF

August 1977

Laurencia majuscula (Harv.) Lucas
MSD 28451e



MARO REEF

August 1977

Dictyopteris australis Sonder
MSD 28451

MARO REEF

August 1977

Dictyopteris australis Sonder
MSD 28451c



MARO REEF

August 1977

Halimeda discoidea Decaisne
MSD 28451f

MARO REEF

August 1977

Microdictyon setchellianum Howe
MSD 28451g



MARO REEF

30 September 1978

9/30/78
Hano DC
Lester Portz

MARO REEF

August 1977

Hydroclathrus clathratus (Bory) Howe
MSD 28451 I



GB-208 15 July 1978
Tag 2835, Tern Is.
Codium arabicum Kuetz.

GB 208

GB-323
Maro Reef - west end

28 Sept. 1978

Caulerpa taxifolia
Caulerpa racemosa var. *peltata*
Caulerpa webbiana var. *disticha*
Chondrococcus hornemanni
Halimeda sp.
Haloplegma duperryi
Laurencia sp.



GB-324

4 Oct 1978

Lisianski - site 1

Amphiroa fragilissima
Caulerpa webbiana
Spiridia filamentosa
Laurencia sp.
Halimeda discoidea
cartilagenous red (?)

GB-324

4 Oct. 1978

Lisianski - Site I



GB-211 20 July 1978
Tag 2839, Lisianski
Gelidopsis sp.

GB211

GB-212 20 July 1978
Tag 2851, Lisianski
Jania capillacea Harvey
Polysiphonia sp.
Pterocladia capillacea

GB212

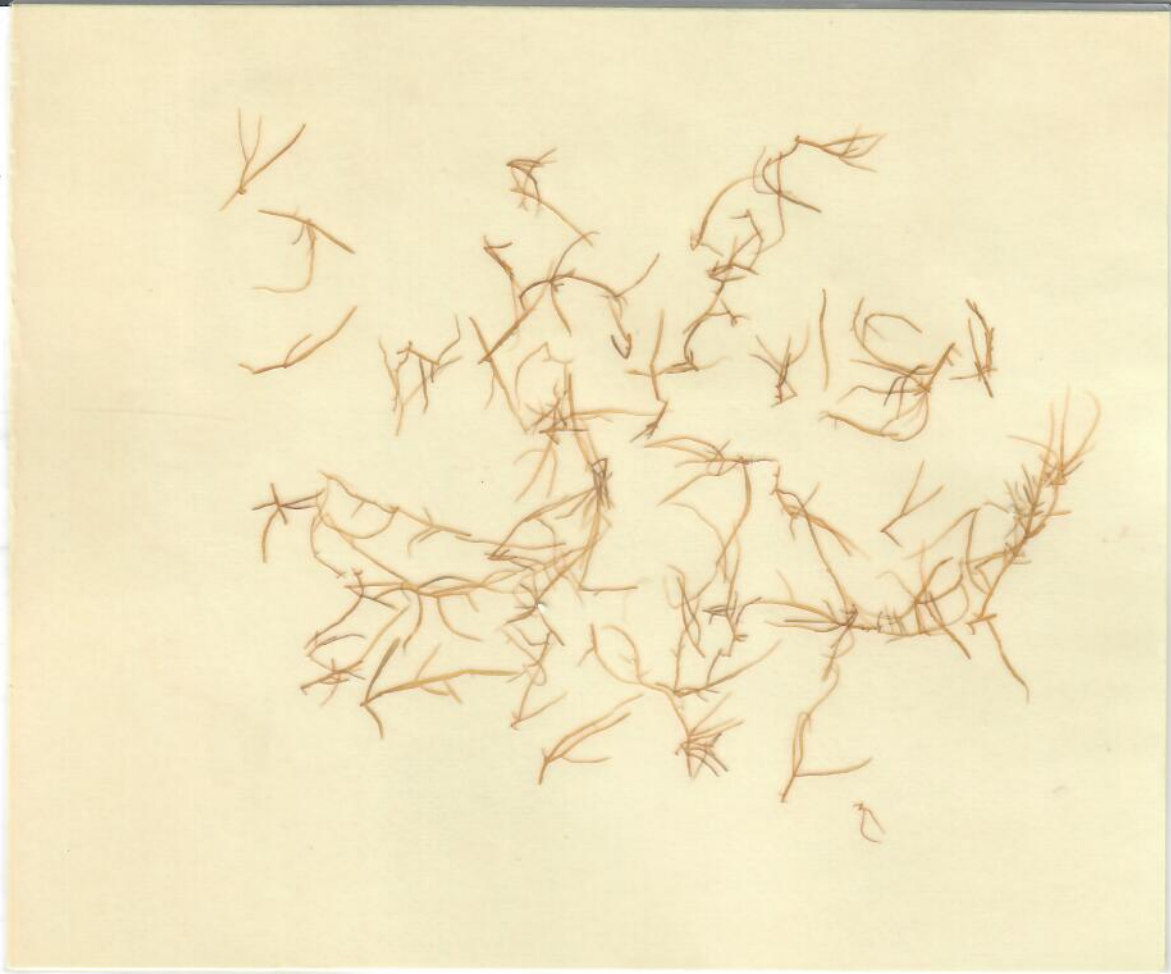


GB-213 21 July 1978
Tag 2859, Lisianski
Gelidiopsis sp.

GB 213

GB-215 22 July 1978
Tag 2867 Lisianski
Caulerpa racemosa

GB 215



GB-325

4 Oct 1978

Lisianski - site 2

Caulerpa racemosa var. *peltata*

Ceramium sp.

Ceramium fimbriatum

Halimeda discoidea

Polysiphonia sp.

Turbinaria ornata

GB-321

3 Oct 1978

Lisianski reef flat - East end

Caulerpa webbiana

Bryopsis pennata

Jania capillacea



GB-320
Lisianski reef flat - site 2

4 Oct 1978

Ceramium sp.
Gelidium pusillum
Polysiphonia sp.

Tr
99%
1%

GB-313
Lisianski
stomach

3 Oct. 1978

Tag 2849

Turbinaria ornata
Jania capillacea

99%
1%



Lisianski
Tag 2871

22 July 1978

Polysiphonia tsudana
Platylepas hexastylus

22 July 1978
skin bunnies
2871

GB-322
Pearl & Hermes Reef

July & Oct 1978

Dictyosphaeria cavernosa
Halimeda discoidea
Jania capillacea
Liagora sp.



Midway
reef collection

May 1977

Caulerpa serrulata
Halophila hawaiiiana

GB-7 12 July 1977

Juvenile mortality, Midway

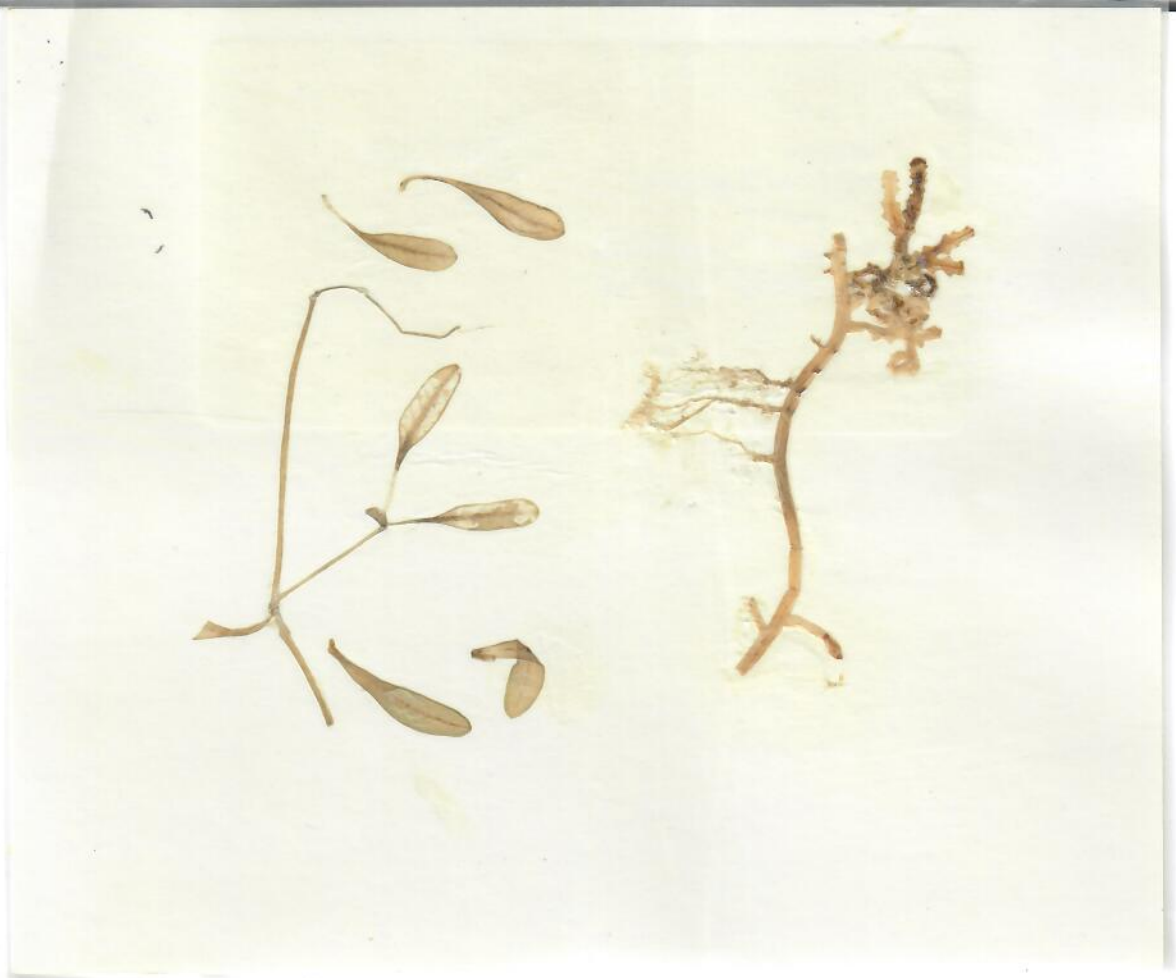
Caulerpa serrulata 95%

Caulerpa sertularioides

Dictyosphaeria versluysii - 5%

Amansia glomerata - Tr

Terrestrial vegetation - Tr



MIDWAY - EASTERN ISLAND

February - March 1978

Reef Collection

MIDWAY - "Reef Hotel

February - March 1978

Reef Collection

GB-647

codrum



MIDWAY - EASTERN ISLAND

February - March 1978

Reef Collection

GB-648

codrum

GB-328

6 Oct 1978

Tag 2974 - Midway (Spit Is.)

skin & shell growth

Lyngbya majuscula 40%

Polysiphonia sp. 20%

Polysiphonia dotyi 20%

Sphacelaria furcigera 20%

5 mm round worms

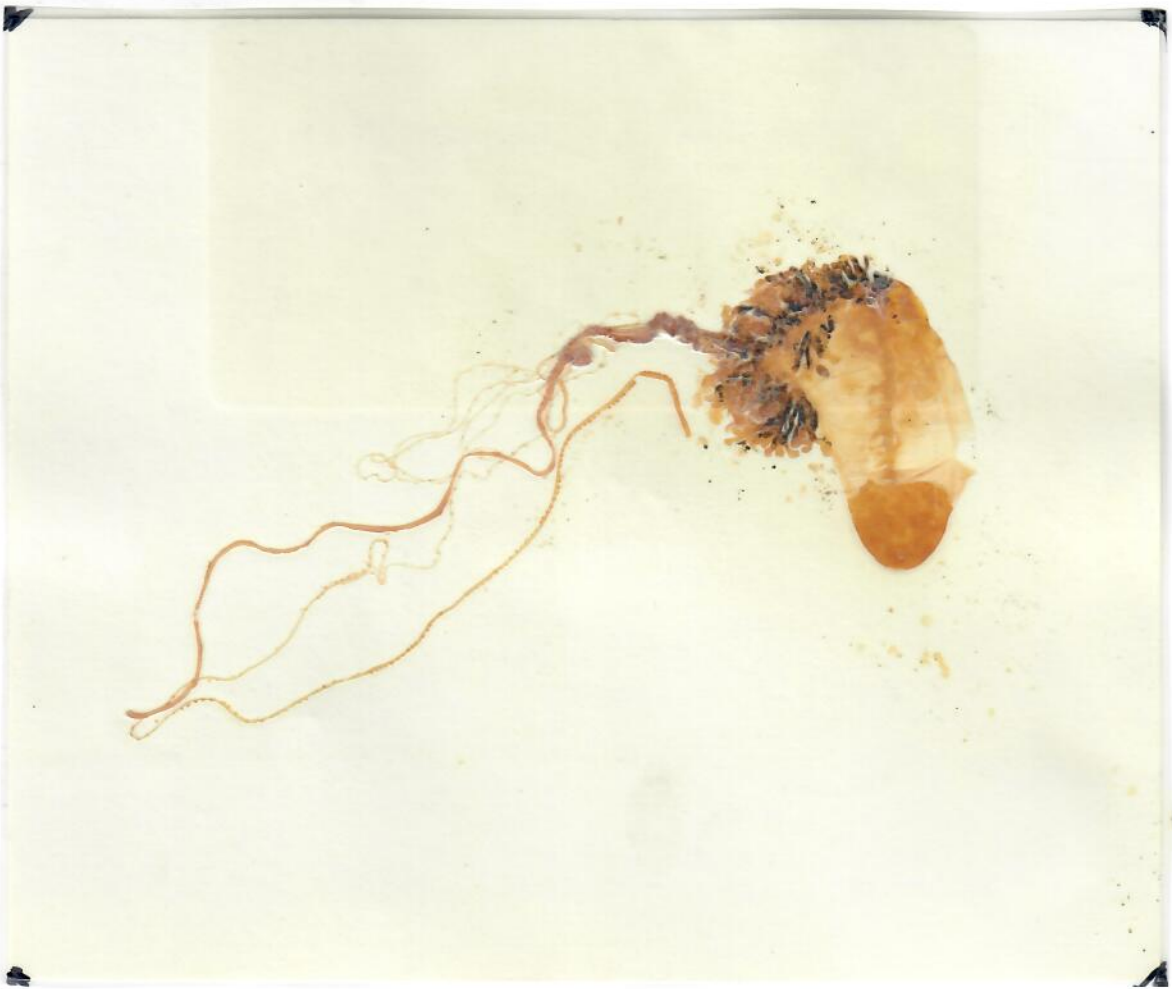


GB-327 6 Oct 1978 - Mouth
Tag 2974 - Midway (Spit Is.)
Padina sp. (small scrap) 10%
Spyridia filamentosa 90%
Horn-like fibers

MIDWAY-KURE

February 1978

PHYSALIA



MIDWAY-KURE

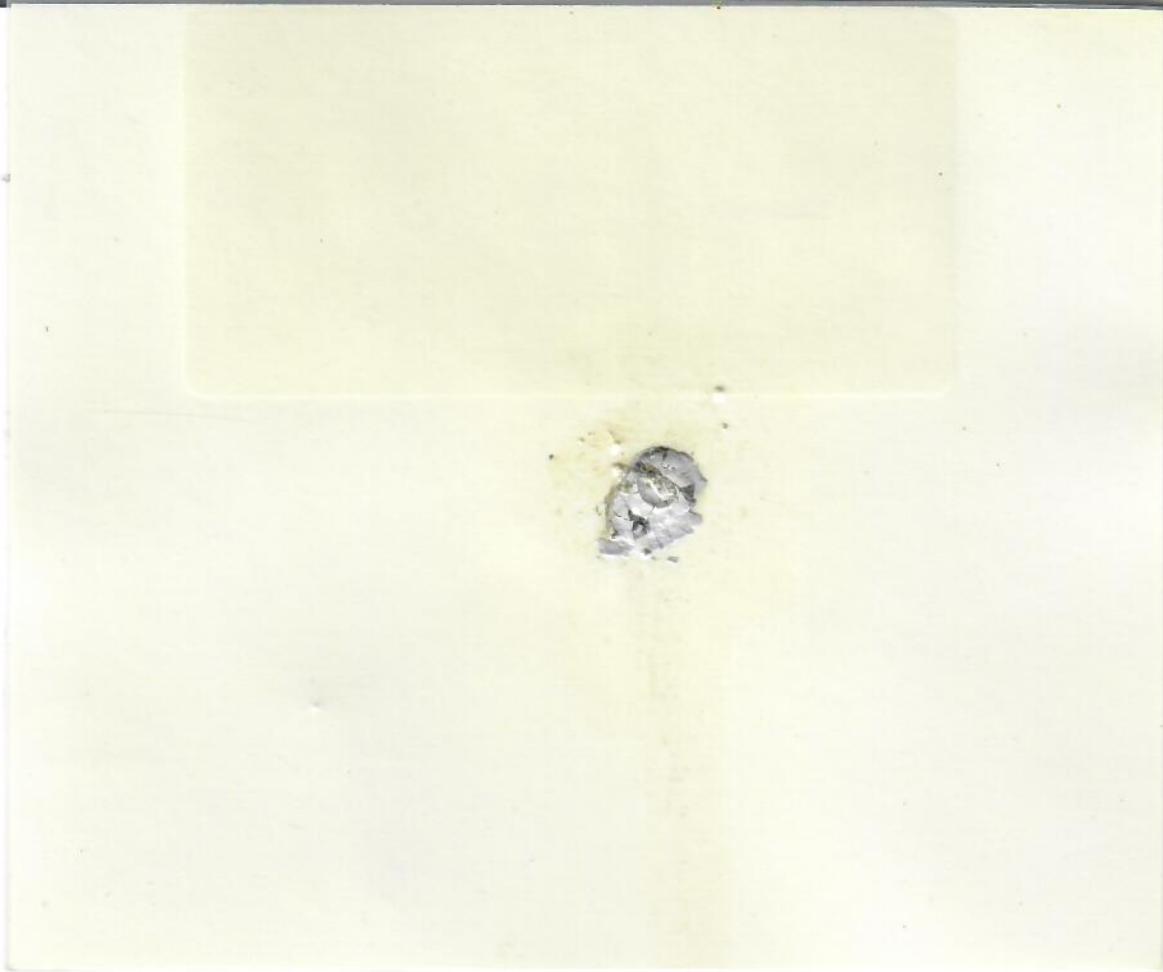
February 1978

Janthina

KURE ATOLL

January 1977

Codium reediae
MSD 28392



KURE ATOLL

January 1977

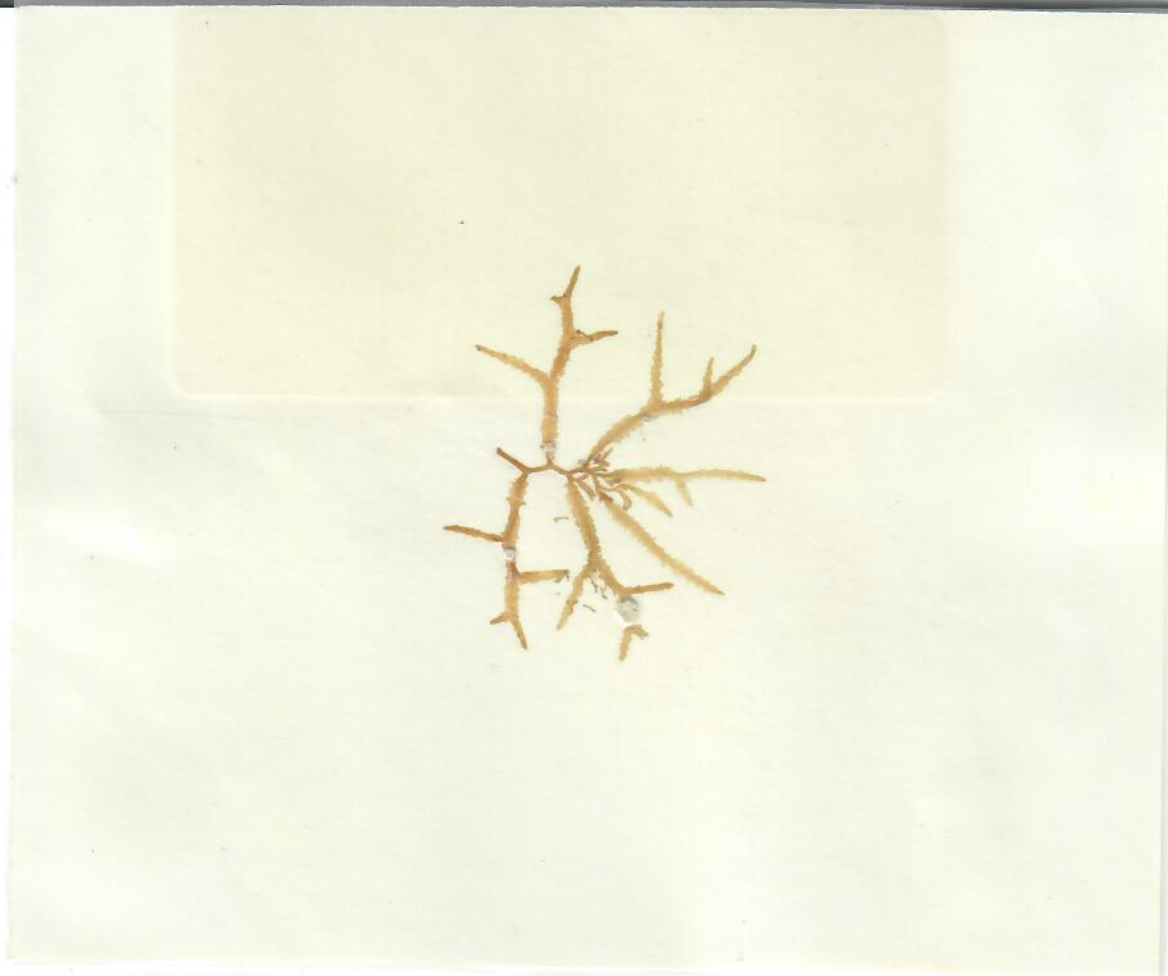
Sargassum hawaiiensis Doty & Newhouse
MSD 28389

KURE ATOLL

January 1977

Dictyota acutiloba J. Agardh

Dictyosphaena
MSD 28387a



KURE ATOLL

January 1977

Ceramium hamatispinum
MSD 28396

KURE ATOLL

January 1977

Laurencia
MSD 28386a



KURE ATOLL

January 1977

Microdictyon setchellianum Howe
MSD 28395

KURE ATOLL

January 1977

Turbinaria ornata (Turner) J. Ag.
with epiphyte



KURE ATOLL

January 1977

Dasya villosa Harvey
MSD 28390

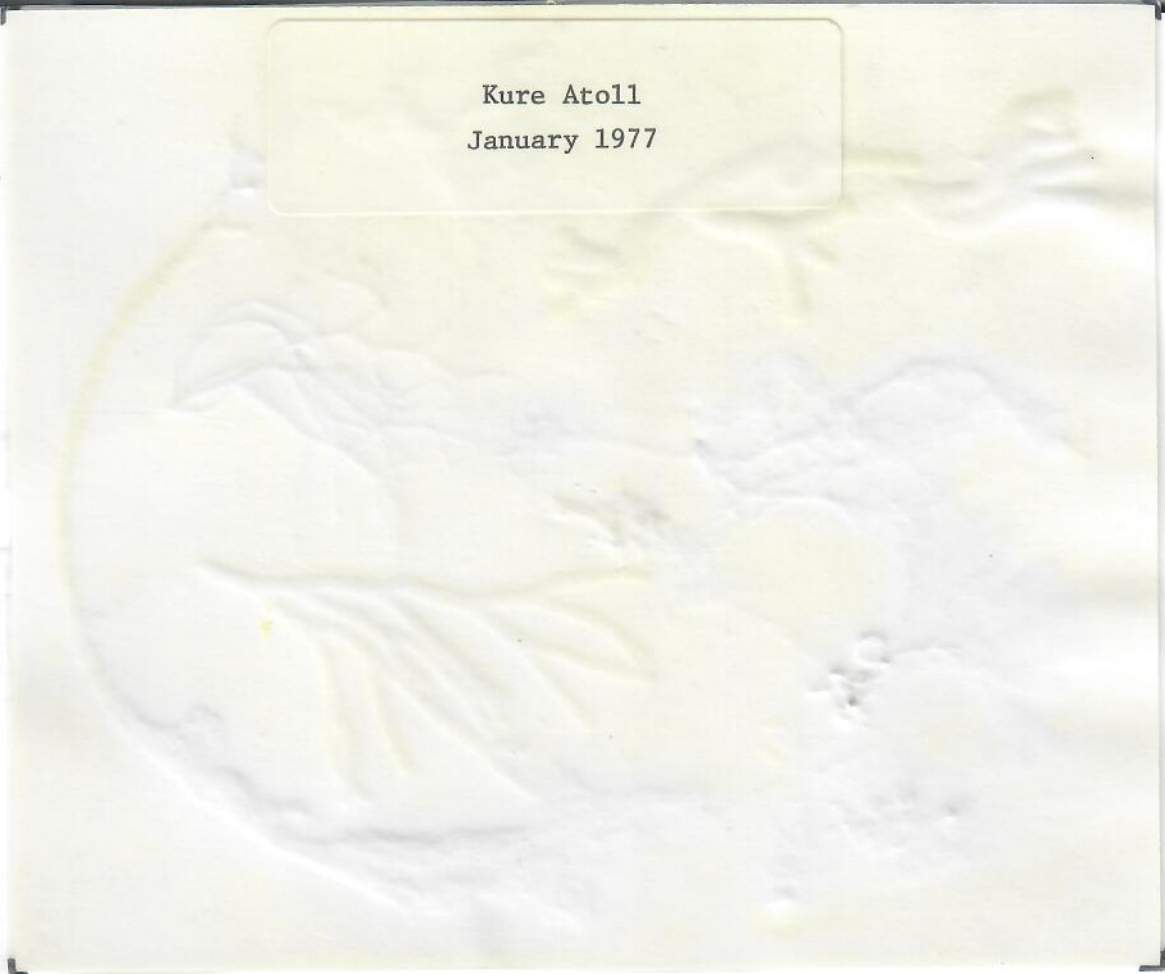
KURE ATOLL

January 1977

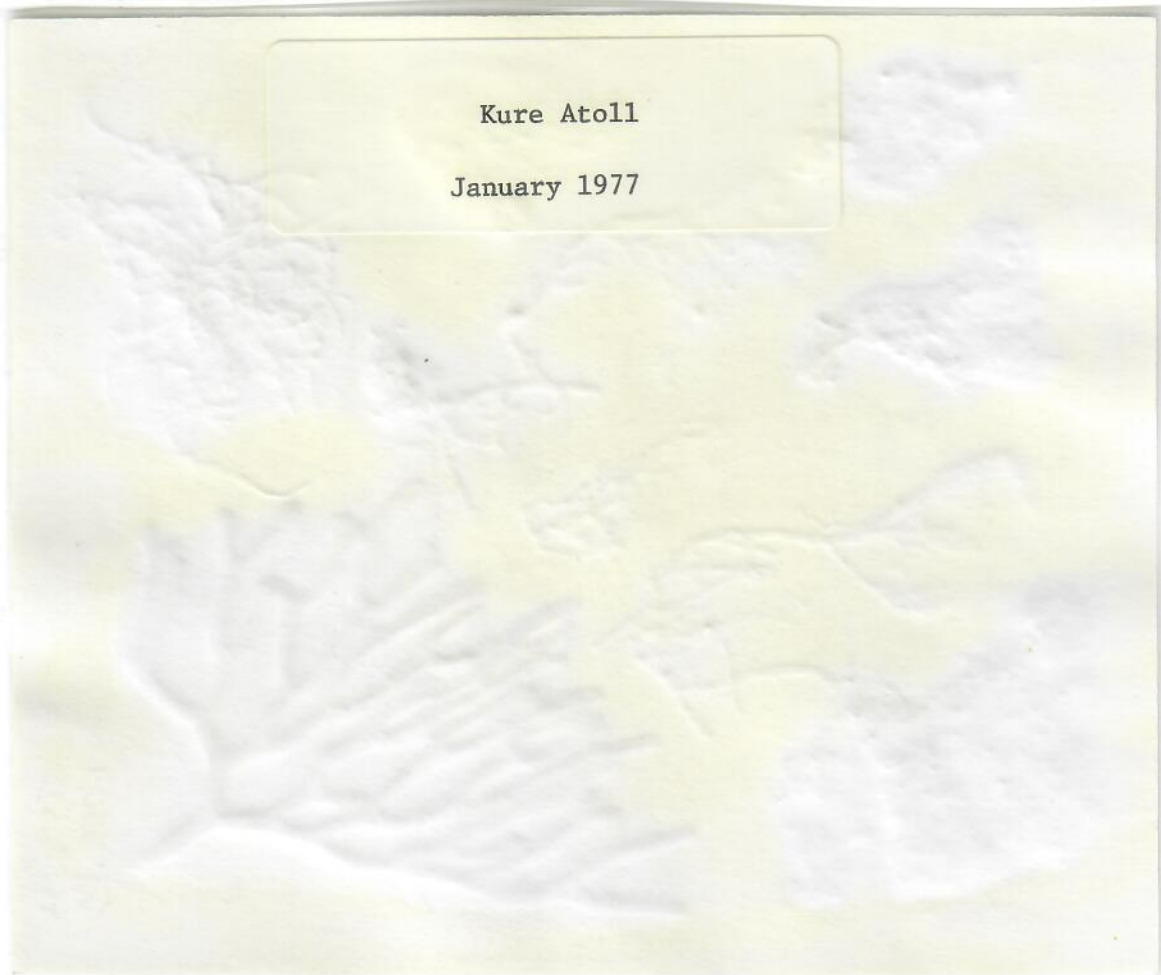
Dictyota
MSD 28398

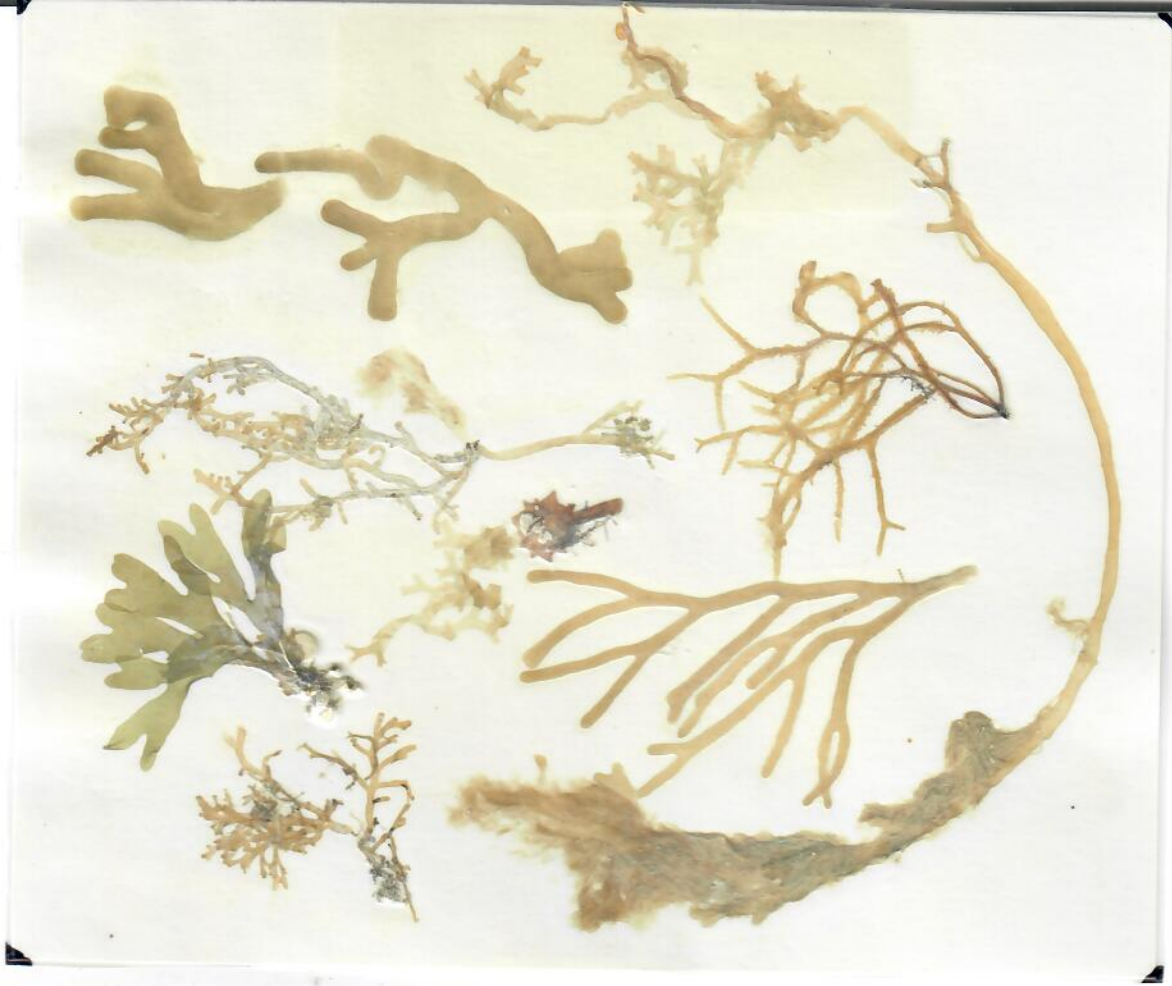


Kure Atoll
January 1977



Kure Atoll
January 1977





KURE ATOLL

January 1977

Dictyota
MSD 28398

Kure 1977
Dictyota

KURE ATOLL

January 1977

Amphiroa on *Dictyosphaeria*
MSD 28399



KURE ATOLL

January 1977

Turbinaria ornata (Turner) J. Ag.
MSD 29394

KURE ATOLL

January 1977

Gelidiopsis intricata (C.Ag.) Vickers
MSD 28385



KURE ATOLL

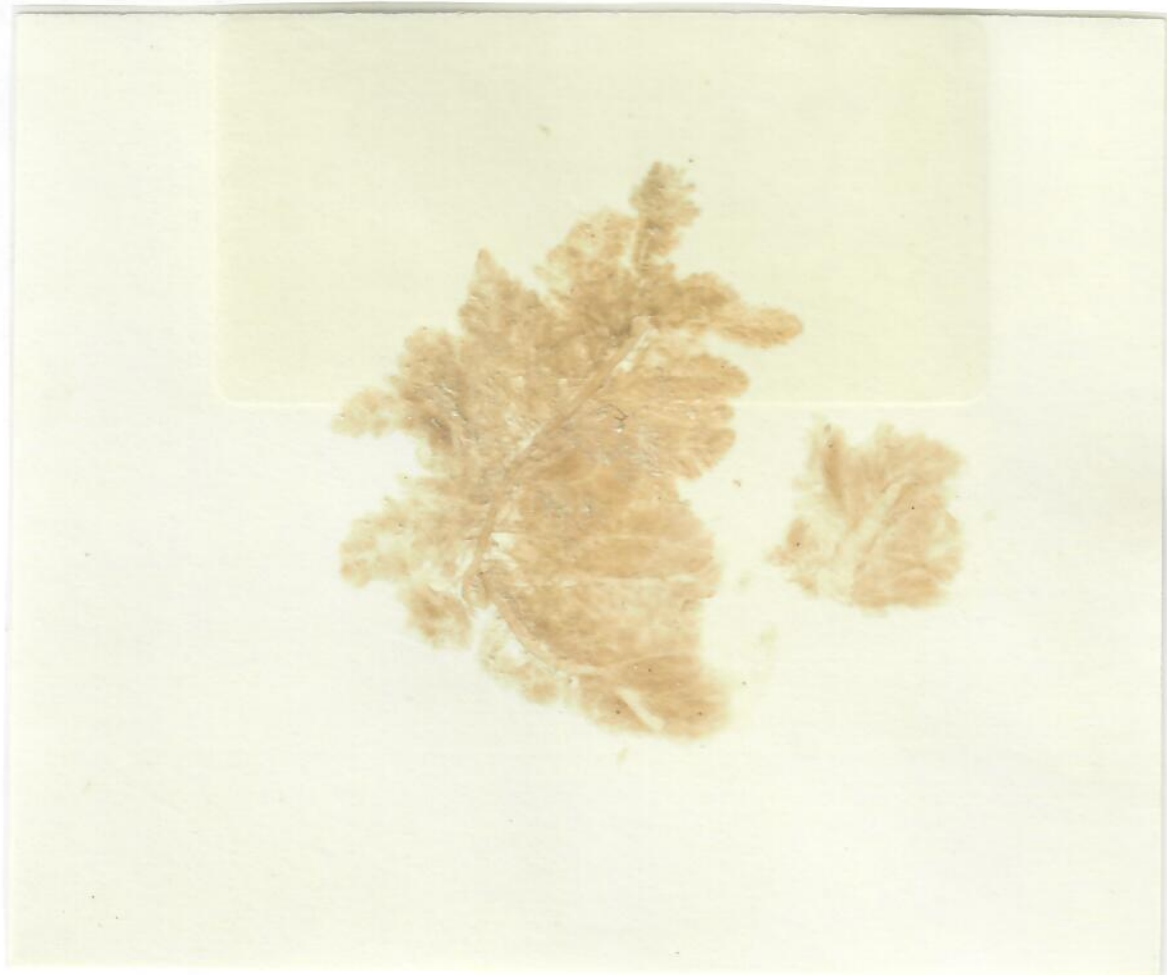
January 1977

Asparagopsis taxiformis (Del.) Coll.
& Herv.
MSD 28391

KURE ATOLL

January 1977

Asparagopsis taxiformis (Del.) Coll.
& Herv.
MSD 28391



KURE ATOLL

January 1977

Spyridia filamentosa (Wulf.) Harvey
MSD 28388

KURE - GREEN ISLAND

22 December 1977

East Reef Collection

Dasya pedicellata
GB-646
Codium arabicum?



GB-145 18 February 1978
Tag 2451, Kure
Polysiphonia tsudana Hollenberg
Lyngbya cinerescens Kutz.

GB 145

GB-150 24 February 1978
Tag 2462 skin, Kure
Polysiphonia tsudana

GB 150



GB-145 18 February 1978
Tag 2451, Kure
Polysiphonia tsudana Hollenberg
Lyngbya cinerescens Kutz.

GB 145

GB-150 24 February 1978
Tag 2462 skin, Kure
Polysiphonia tsudana

GB 150



GB-152 25 February 1978
Tag 2467 skin, Kure
Polysiphonia tsudana

GB 152

GB-155 1 March 1978
Tag 2473 skin-plastron, Kure
Polysiphonia tsudana

GB 155



GB-404 31 Jan 1979
East reef flat
Green Island, Kure

<i>Laurencia majuscula</i>	50%
<i>Codium arabicum</i>	50%
<i>Jania capillacea</i>	trace

CB-403 tags 2988, 2989, 2990
30 January 1979 Green Island, Kure
stomach sample

<i>Spyridia filamentosa</i>	99%
<i>Centroceros clavulatum</i>	1%

