

UNITED STATES GOVERNMENT

FISH AND WILDLIFE SERVICE  
HONOLULU, HAWAII

# Memorandum

TO : Capt. Del Giorno, U. S. Coast Guard  
Search and Rescue Coordination Center

FROM : Gerald M. Ludwig, Assistant Refuge Manager - Remote Islands  
Hawaiian/Pacific Islands National Wildlife Complex

SUBJECT: Radio frequencies used by the U. S. Fish and Wildlife Service  
and the National Marine Fisheries Service for field camps  
in the Northwestern Hawaiian Islands.

DATE: DEC 3 1982

The following frequencies are available for use by the U. S. Fish and Wildlife Service in Honolulu and at Tern Island:

| Assigned Frequency | Carrier Frequency |
|--------------------|-------------------|
| 1. 5908.9 KHz      | 5907.5            |
| 2. 3216.4          | 3215.0            |
| 3. 8295.6          | 8294.2            |
| 4. 4145.0          | 4143.6            |
| 5. 6223.0          | 6221.6            |
| 6. 6507.8          | 6506.4            |
| 7. 8295.6          | 8291.1            |
| 8. 12433.7         | 12432.3           |
| 9. 16591.6         | 16590.2           |
| 10. 13114.6        | 13113.2           |

Our primary daytime frequencies are numbers 3, 5, and 1. Primary nighttime frequencies are 1 and 3. Our radios have frequencies that are fixed by crystals with the exception of the Honolulu Office radio which has programmed frequencies.

The National Marine Fisheries Service utilizes the following frequencies:

|            |         |
|------------|---------|
| 1. 5908.9  | 5907.5  |
| 2. 22696.6 | 22695.3 |
| 3. 17268.4 | 17267.0 |
| 4. 6510.9  | 6509.5  |
| 5. 13142.5 | 13141.1 |

NMFS field camps usually communicate with FWS in the evenings on frequency number 1. They also communicate with their home station (on Dole Street) on frequencies 2 and 3. In addition, they can communicate with the NOAA ship Townsend Cromwell and the Cromwell's base station on Sand Island Road (Snug Harbor) on frequencies 4 and 5. The NMFS field camp radios are tunable to frequencies between 1.6 and 60 MHz.

Fish and Wildlife has a VHF receiver/transmitter with channels 1-88. In addition, we have handie-talkies with 34.810 MHz frequencies.

NMFS also has hand-held radios that transmit and receive on the following frequencies:

|                | Transmit  | Receive |
|----------------|-----------|---------|
|                | 156.8 KHz | 156.8   |
|                | 157.15    | 161.75  |
| At Kure Island | 156.8     | 156.8   |
| Field Camps    | 156.35    | 160.95  |
|                | 156.65    | 156.65  |
|                | 157.125   | 157.125 |

cc: Ed Bolby, NMFS

*Ed Bolby*



|         |   |       |
|---------|---|-------|
| SB      | <b>SAN BERNARDINO<br/>RADIO BEACON 397 kHz</b>  |       |
|         | ROBERT C. HOMUTH, PHOENIX, ARIZONA: THIS CONFIRMS YOUR RECEPTION OF "SB" ON 1300Z QU 3 April 1986 |       |
| POWER   | 50  | Watts |
| ANTENNA | Long wire   |       |
| NOTES   | Pc His "H" Marker   |       |
| SIGNED: | <i>Ronald V. Rudolph</i><br>Regency Coordinator<br>San Diego Army Radio Sats                      |       |

Bob Homuth, AZ used this PFC for verification of a beacon reception.

|   |              |                               |                    |
|---|--------------|-------------------------------|--------------------|
| <b>C. A. N. TELEFONOS DE VENEZUELA<br/>VENEZUELAN TELEPHONE COMPANY</b>   |              |                               |                    |
| Confirmando el reporte de nuestro Sistema Internacional de Radio<br>Confirming the report of our International Radio System |              |                               |                    |
| Recibido de<br>Received from  | Job Chruskay | Fecha<br>Date                 | Hora<br>Time (GMT) |
|   |              | 30 30                         | 03:10              |
| TRANSMITIENDO CON   |              | TRANSMITTING WITH             |                    |
| Potencia de<br>Power of   | Modo<br>Mode | Frecuencia<br>Frequency (kHz) | Antena<br>Antenna  |
| 30 KW (P.E.P.)  | CC           | 8.443                         | Antena<br>Aerial   |
| Muchas gracias por su atención<br>Many thanks for your attention  |              |                               |                    |
| 73 es DX <i>Bob Christian</i>   |              |                               |                    |

QSL from the collection of Bob Christian, LA.

| Abbreviations Used For Intercepts |                                    |
|-----------------------------------|------------------------------------|
| AM                                | Amplitude Modulation mode          |
| BC                                | Broadcast                          |
| CW                                | Morse Code mode                    |
| EE                                | English                            |
| GG                                | German                             |
| ID                                | Identifier/location                |
| LSB                               | Lower Sideband mode                |
| OM                                | Male operator                      |
| PP                                | Portuguese                         |
| SS                                | Spanish                            |
| ffc                               | Traffic                            |
| USB                               | Upper Sideband mode                |
| w/                                | with                               |
| wx                                | Weather report/forecast            |
| YL                                | Female operator                    |
| 4F                                | 4-figure coded groups (i.e. 5739)  |
| 5F                                | 5-figure coded groups              |
| 5L                                | 5-letter coded groups (i.e. IGRXJ) |

**6385:** PWR, Rio Grande Navrad Brazil in CW at 0321 w/V's and QSX info. (Scalzo, PQ, Canada)

**6389:** CTP, Oieras Navrad Portugal in CW at 0248 w/V's and QSX info. (Scalzo, PQ, Canada)

**6506.4:** ZLW, Wellington, New Zealand in USB at 0716 wkg F/V Amalita Explorer. Received full data PFC and nice letter on Company letterhead for this reception. Address: Wellington Marine Radio, GPO Heard Street, Wellington, New Zealand. (Sabo, CA)

**6507:** Music box playing tune "Swedish Rhapsody" here every Sat at 1900/2000 and also on 5340/4779 kHz. On this occasion at 1905 YL/GG w/headings 85447/25978/47357 and into 5F grps for each heading. (Mason, England)

**6962:** YL/EE in AM at 0215 w/5F (3/2F) grps. (Scalzo, PQ, Canada)

**7394.5:** SLHFB "V" at 2000. (Mueller, France)

**7450:** BROADWAY CONSUMER, Arizona National Guard-related net IN LSB at 0211. Incl 57Y, 57AB, & 65A (OM/STR). 65A explained his strong sigs as saying he had an 4,022 foot antenna. (Sabo, CA)

**7475:** WAR46, Ft. Richie, MD wkg ARCHIBALD w/rdo check on SAC W-104 channel. USB at 0405. (Sabo, CA)

**7527:** LONGHORN w/calls to "43" on Customs Service "ZB" channel. USB at 0027. (Sabo, CA)

**7535:** The full USN units worked Norfolk SESEF to check equipment emission; NDIB, USS Briscoe DD977

at 1600; NRWS, USS Simpson FFG56 at 1700; NQSI, USNS Rigel T-AG-58 at 1735; N0TC, USS Caron DD970 at 1630. (Stuart, DE)

**7585:** Music box "Swedish Rhapsody" every Sun at 1800. Tfc in 5F grps for 421812/41259/99881 in German by soft-voiced YL. (Mason, England)

**7605:** YL w/rpts of VLB in USB at 0413. Weak but very clear. 7445 kHz active w/KPA2 at same time. (Sabo, CA)

**7752:** YL rptng Echo Gulf w/elec-tones 2100-2105. Then 5F grps in GG for 472 and 795. (Mason, England)

**7760.2:** KWL48 (?Howl Kai?); KOJ638/Tern Island; and KAW63/Lake Sand hrd in USB between 0435-0506, w/first two stns in most comms. Apparently some sort of Marine Research net with lots of talk re turtle eggs and hatchings, molted seals, sending research data and samples back and forth, etc. Also a ref to a 12 MHz freq. All very interesting & best guess is a NOAA/National Marine Fisheries activity. All on weak to medium strength but fairly readable. (Sabo, CA)

**7801.1:** USCGC A3D passing ships registration info to Group Key West in USB at 0155. (Willmer, MI)

**8120:** YL/GG w/1-0 count and 399 from 2000-2010. After ten tones Gruppe 210 and into 4F grps. Simulcast w/10135 kHz. At same time on 7375/9465 kHz YL/GG w/1-0 count and 106. After ten tone Gruppe 154 and into 3/2F grps. Rptd week later. (Mason, England)

**8241.5:** GQIC, HMS Alacrity F174 clg Portishead Radio at 0830. Portishead should respond on 8765.4 kHz but no joy at this time. (Stuart, DE); US Army Vessel Klinger to Commsta Honolulu for rdo check, then asked for freq to check out RTTY gear. Commsta said to QSY 6455 kHz. USB at 0416 and duplex 8765. kHz; S/V Philadelphia (KYSP) wkg Commsta Portsmouth (NMN). Vsl headed for St. Croix, Virgin Islands. USB from 0502-0503 and duplex 8765.4 kHz. (Sabo, CA)

**8247.7:** USS Dixon (NWPB, A357) w/calls to San Diego CSS-2. (NPL). CSS-2 hrd answering faintly on duplex freq 8771.6 kHz then nil more. USB at 0408. (Sabo, CA)

**8270:** YL/EE in AM at 0501 rptd 479 until 0505, then 678 x3 42 x2 and into 5F grps (each x2). Same YL w/same format noted this date also on 20250 and 9320 kHz. (Sabo, CA)

**8291.1:** Tidewater Marine, Morgan City, LA in USB at 1510 wkg M/V El Canaro Grande (seagoing tug) re vessel position, wx & sea conditions. FYI: Tidewater Marine is one of largest boat companies in world specializing in offshore supply vessels (OSVs), seagoing tugs and inland towing vessels. They also own a large fleet of barges. (Christian, LA)

**8680:** RMP, USSR Navy Kalingrad in CW at 1925 w/calls to UHEY. (Boender, Netherlands)

**8718.9:** COMSUPRON-8 w/unanswered calls to USS Papago (NZPU, ATF160) at 0148. Same nite from 0625-0627, COMSUPRON-8 in comms w/USS Papago w/query re current status of ship which was apparently having problems w/power system on board. USB mode. (Sabo, CA)

**8828:** KVM70, Honolulu Hawaii Vomet w/aero wx for major West Coast airports. USB at 0609. (Scalzo, PQ, Canada)

**8891:** Gander rdo to Canforce 01 w/msg relay to North Bay and freq change (11233 kHz). Later on VHF hand off to Moncton centre. USB at 2100. (Scalzo, PQ, Canada)

**8912:** HOMEPLATE wkg a/c 25 on Customs Service YC channel. Was USB at 0216. (Sabo, CA)

**8930:** Stockholm rdo wkg Scandinavian 932 w/patches to Copenhagen Dispatch re maintenance problems. Much talk re disparities between left-right engine readings. They QSY'd to 5541 kHz momentarily but stns unable make contact so QSY'd back to 8930 kHz. USB from 0311-0338. (Sabo, CA)

**9197:** FHWA/DOT Regions 6/7/8 net command roll call conducted by WWJ48/FHWA, Lakewood, CO. Others included WWJ63, 65, 70, 46, 82, 88 and 86. USB at 1406. This is FHWA F4 channel. (Sabo, CA)

**9251:** YL rptng 11483 w/tune "Lincolnshire Poacher" playing in between. At 1810 into 200 5F grps ending at 1845. Warble jammers on this freq at 1820 and also on the other two freqs - 7887/8464 kHz. (Mason, England)

**10069:** TWA 848 asks Berna Radio (Switzerland) for selcal check AeJL at 1157. (Mueller, France)

**10125:** CIO2 (Mossad) hourly callup at 45-50 mins past hour. (White, ME) Simulcast on 13291 kHz. (Sabo, CA)

**10284:** VVV DE 8BY (New Indonesia call???) w/short

coded msg (trinome grps). Hrd at 0648 in CW. (Scalzo, PQ, Canada)

**10285:** SLHFB "V" at 0322. (Mueller, France)

**10493:** WGY912 (VIP Relocation Site, Mt. Weather, VA) attempting patch between 3525 and LEGAL LION from 0223-0227 but the two parties having trouble hearing one another. On another day at 1408 hrd WGY906 (FEMA, Denton, TX) wkg WGY938 (FEMA, Cheyenne, WY). This is FEMA F28 channel. (Sabo, CA)

**10869:** WGY912, Mt. Weather, VA (FEMA) w/3 char grps in CW at 2032. (Scalzo, PQ, Canada)

**11090:** YL/GG rptng 823 x3, 1-0 count. At 2310 ten tones and into 89 3/2F grps. (Willmer, MI)

**11160:** YL/EE rptng 425 until 0134 then 693 x2 122 x2 and into 5F grps x2. (Willmer, MI)

**11214:** Trenton Military wkg a/c CHALLIS-ALPHA w/pp to u/i party. Ground party couldn't hear a/c so Trenton relayed. Probably NORAD/AWACS activity. USB from 0401-0404. (Sabo, CA)

**11215.5:** RJ (NCS) advising Lab and Troop that C-11 Air Comm Terminal was available. Proceeded to pass data on USB at 1240. (Willmer, MI)

**11226:** Andrews AFB wkg Air Force One w/pp's to CROWN (White House Communications Agency) in USB at 0220. Intermittent patches and comms hrd until 0241. CARPET BAG w/calls to SOLDIER in USB at 2041 on SAC X-905 channel. (Sabo, CA)

**11491:** YL/SS in AM AT 0103 announces 247 + 10 count. Then into 4F grp msg at 0110. (Margolis, IL)

**12158:** YHWA/DOT Regions 1/3/4 net command roll call conducted by WWJ48 (FHWA Lakewood, CO). Other stns incl WWJ41, Cairo, NY; KTX20, DOT Hq Wash DC; WWJ43, Berkeley Springs, WV; WWJ44, Dahlonega, GA; WWJ63, Nashville, TN; WWJ65, Raleigh, NC; WWJ70, Montgomery, AL; & WWJ68, Avondale, GA. USB from 1418-1423. This FHWA F6 channel. (Sabo, CA)

**12342.3:** NOAA DISCOVERER (WTEA, R-102) wkg COMMSTA Honolulu (NM) at 0310; NOAA MCARTHUR (WTEJ, S-330) wkg COMMSTA Honolulu at 0400. All USB and duplex 13113.2 kHz. (Sabo, CA)

**12750.3:** CWA, Cerrito/Puntas Radio, Arenas, Uruguay w/QSX info. CW at 0333. (Scalzo, PQ, Canada)

**12790:** URL, Sevastopol, USSR in CW at 0145 w/mkr and QSX info. (Scalzo, PQ, Canada)

**12999.5:** CTU2, Nunes Navrad, Ribiero, Portugal in CW at 0025 w/tfc. (Scalzo, PQ, Canada)

**13244:** An individual identifying as an American Escort aboard Aeroflot 4113 w/pp via MacDill to Air Force Operations Center w/ETA to Andrews at 1745. NOTE: This flight prob carried Boris Yeltsin when he made trip to States. (Willmer, MI)

**13261:** Tahiti wkg Hawaiian 485 at 0446; Nandi wkg a/c 24 at 0449. USB mode. (Sabo, CA)

**13312:** Rockwell in USB from 0141-0144 w/wx for various West Coast locations for a/c 003. A/c opr had heavy foreign accent. 8822 and 6550 kHz mentioned as alternate freqs. (Sabo, CA)

**13560:** BDD22, Taipei Meteo, Taiwan w/VVV/CQ CW mkr into PT wx in EE at 1600. ID'd itself as BMB. (Margolis, IL)

**13635.5:** SLJFB's "D", "P", "C" and "S" at 1042. (Mueller, France)

**13815:** KRH50, AmEmbassy, London, England in CW at 0448 w/QSX info. (Scalzo, PQ, Canada)

**13940:** YL opr w/Aussie accent ran patch from Scott Base (NZ Antarctic Base) to stateside location but only the non-Arctic side was hrd. Prob Telcomm Int'l (Wellington), as QSL letter I received from Telcomm said they do this for Scott. USB from 0422-0437. (Sabo, CA)

**14330:** OM/EE in USB at 2106 w/5F grps x2. (Weil, MN)

**14421:** H4M w/QRA H4M GR 34 BT in CW at 1420 foll by 5L grps and rptd msg one time then BT AR at 1426. (Margolis, IL)

**14441.5:** NDFY, USS Sand Lance SSN660 NNNOCFL clg "Any Stateside MARS Station" at 0225. (Stuart, DE)

**14535:** OM/II dictates msg to another OM/II on USB at 0953. (Margolis, IL)

**14686:** ATLAS w/calls to 610 in USB at 1903. This is Customs Service "P" channel. (Sabo, CA)

**14762:** Stn in CW at 0730 w/5L grps. Later ID'd as DE 9T. Have hrd variety of calls here, poss UK Military drill net. (Scalzo, PQ, Canada)

**14912:** AAC2, Ft. Richie, MD wkg AADU at Nombr de Dios, Panama on USB at 1152. AADU gave his



location at time of the transmission. (Margolis, IL)

**15004:** RID, Irkutsk Time Signal Station, USSR hrd w/id in CW & time pips at 1250. (Margolis, IL)

**15682:** YL/EE w/72701 and Lincolnshire Poacher tune here and on 14487 kHz at 1800. Xmtr opr must have realized at 1802 that evening sked was in operation so these two freqs were shut down and 7887/8464/9251 kHz were started up. (Mason, England)

**15843.5:** NDU M rptd in CW at 1332. At 1335 in info 5L grps (cut nbrs) using ADGIMNRTUW. S/off at 1342 w/SK VA. (Margolis, IL)

**15867:** SLINGSHOT wkg ALMIGHTY in USB at 0227 on Customs Service ZE channel. (Sabo, CA)

**16000:** VNG, Canberra, Australia w/time signal and ID on the hour. Hrd in AM at 0710. (Scalzo, PQ, Canada)

**16355:** STING RAY (USAF) hrd in comms w/CARPENTER on USB at 1559. (Margolis, IL)

**16459.7:** OM/SS in USB at 2128 sending msg indicating they experiencing strong QRM from RTTY in the Mediterranean zone and it was affecting comms. Stn then requested of other end that they shift to CW but they stayed on voice and moved up to 16465.6 kHz USB. Poss Spanish Navy comms. (Ed.)

**16861.5:** 5OW17, Lago, Nigeria in CW at 1303. (Mueller, France)

**16954.5:** GKC, Portishead, England in CW at 2019 w/mkr. (Scalzo, PQ, Canada)

**17015.5:** SLHFB's "D", "P", "C" and "S" at 1500. (Mueller, France)

**17016.2:** SLHFB "F" at 0900. (Mueller, France)

**17170.5:** ZLB, Zuarua, New Zealand in CW at 0163 w/QSX an dtfc info. (Scalzo, PQ, Canada)

**18010:** 07 clg 41 (OM/EE oprs). 07 asking 41 if they wrking tomorrow & if 41 ready to implement plan on Monday. 07 advising 41 to use hood on vehicle when working for ventilation reasons. USB at 0400. (Fenlon, OH)

**18171:** ATLAS wkg AMBUSH w/patch to CLIPPER-24 in USB at 1802. This is Customs Service "SI" channel. (Sabo, CA)

**18532:** GAS TUBE to BASS BOAT w/alfa-numeric tlc (3L/F grps). GAS TUBE passed two such msgs, then a 3rd in PT which he called a comm activity test msg. Totally u/i but BASS BOAT is a call sign used occasionally on SAC nets. USB from 1856-1913. (Sabo, CA)

**18619:** U/i US Navy stn in CW at 1258. Sent very long letter from Navy recruiter re life & career in Navy. Letter sent at 17.5 wpm. Dropped at 1430. (Margolis, IL)

**19095:** YL/EE in USB w/3+2F grps at 1501. (Margolis, IL)

**19782:** LPL, Gen. Pacheco, Argentina w/voice id tape in SS foll by tones. USB at 2244. (Scalzo, PQ, Canada)

**20220:** YL/EE in AM at 2141 w/3+2F grps. (Scalzo, PQ, Canada)

**20250:** YL/EE in AM at 2110 w/5F grps each x2. Super good sigs. (Sabo, CA)

**20405:** YL/EE on AM at 1800 w/758 758 758 & 1-0 count. Foll by 3/2F grps at 1810. (Margolis, IL)

**20407:** KICKBACK wkg u/i stn in USB at 1809. Advised him that this freq was primary and X-905 was 2ndary. Called this one W-117. (Sabo, CA)

**20450:** CLP1, Ensenada Mora, Cuba (MINREX) w/coded tlc in CW at 1910. Very poor tone quality. Also hrd on 20454 kHz but it not simulcast with this freq. (Scalzo, PQ, Canada)

**20724:** Possibly CLP1, MFA, Havana, Cuba w/5F grps. Zero cut as ltr T. CW at 1756. Xmtn ran for more than an hour. (Margolis, IL)

**20737:** AFC3RI wkg 472 and AGA2PX w/patches in USB at 1924. 472 was poss an a/c and AGA2PX is listed as a deployed element. (Sabo, CA)

**20991.5:** SLHFB's "D", "P", and "C" at 0900. (Mueller, France)

**20994:** AAV4AN and AAV6 in informal session 1850-1900 when AAT3PY (VA) broke in, advised he needed make his 1900 sked and cld Saudi stns AEM3VA and AEM3BO. Never got an answer, and AAV4AN advised that those stns were on frequency Echo-6. USB mode. (Sabo, CA)

**21750:** YL/EE at 2128 w/groups of nbrs. A minute later what appeared be the same xmtn hrd on 17567 kHz. At 2202 I checked back on these freqs and hrd poss jamming (poss "Barrage" jamming) on 21750 kHz and the prev hrd sig could not be hrd. On 17550 kHz the sig was not hrd and there was some type of QRM present but not the same as that on 21750. (Brookman, AK)

**23402.5:** 452 wkg ATLAS in USB at 1809 on Customs Service "R" channel. (Sabo, CA)

## 12 HOUR RECORDER



- excellent audio quality
- trouble-free metal (NOT plastic) chassis
- 6 hours per side, C120 tape
- volume AND tone controls
- AC/DC operation
- digital counter
- BUILT-IN voice activation (no external box) - add \$19\*
- scanner adapter cord - \$8\*

**\$129\***

## AUTOMATIC TELEPHONE ADAPTER

- starts/stops recorder automatically
- FCC approved



**\$16\***

\*special prices for PopComm readers

NO shipping charges on prepaid orders.  
COD's OK. California residents add tax.

## FREE CATALOG



### VIKING INTERNATIONAL

SINCE 1971  
150 EXECUTIVE PARK BLVD. #4600  
SAN FRANCISCO, CA 94134  
PHONE: (415) 468-2066  
FAX: (415) 468-2067

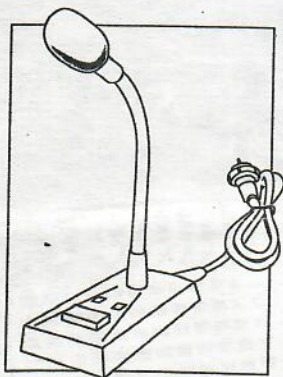
CIRCLE 136 ON READER SERVICE CARD

## RANGER SDM-1000

BASE MICROPHONE WITH  
UP/DOWN SCANNING

High-Fidelity Wide band frequency response give your station that broadcast studio sound!

- Electret element and high quality SMT-amplifier
- Modern slim line design - easy to use with minimum space requirement
- Designed for use with all amateur transceivers: HF-VHF-UHF-SHF
- Factory pre-wired for most popular transceivers
- Up-down buttons-locking type PTT switch
- Stable, heavy-duty, die-cast base
- Long-life watch type battery



Pre-wired for:  
AR3300-AR3500-YAESU 8 pin transceivers  
Model F: AR3300-AR3500-YAESU 8 pin transceivers  
Model H: HR-2510/LINCOLN  
Model I: RCI 2900/2950



**CLEAR CHANNEL  
CORPORATION**

PO Box 445  
Issaquah, WA 98027  
206-222-4295 FAX 206-222-4294

## NEW PUBLICATION

## MARITIME FREQUENCY DIRECTORY

LF - MF - HF - VHF - UHF

CW - FACSIMILE - FM - SITOR - SSB

THIS NEW PUBLICATION CONTAINS OVER  
27,500 LISTINGS BY COMMUNITY AND  
INCLUDES NEW 1991 ITU FREQUENCY  
ALLOCATION CHANGES.

INCLUDED ARE GENERAL MONITORING  
INFORMATION, VHF FREQUENCY ALLOCATION  
CHARTS, COAST-SHIP FREQUENCY  
CROSS REFERENCE CHARTS, AND THE  
NEW 220 MHZ MARINE FREQUENCIES.

Coverage Includes:

|   |                            |
|---|----------------------------|
| Coast Guard                               | Weather Broadcast          |
| High Seas Radio Telephone                 | VHF Marine Operators       |
| Public Coast Stations                     | Limited Coast Stations     |
| Utility Coast Stations                    | Operational Fixed Stations |
| Commercial Stations                       | Recreational Stations      |
| Search and Rescue                         | Emergency and Distress     |
| Port Operations                           | Mississippi River          |
| Maritime-Aeronautical                     | UHF Dockside Channels      |
| New Automated Maritime Information System |                            |

**\$ 24.95 PLUS \$ 3.05 SHIPPING**

OFFICIAL SCANNER GUIDE  
POST OFFICE BOX - 712  
LONDONDERRY, NEW HAMPSHIRE 03053



# COMMUNICATIONS CONFIDENTIAL

## YOUR GUIDE TO SHORTWAVE "UTILITY" STATIONS

A very interesting letter plus some photos were forwarded from Robert Ward, a member of the Canadian CG station in Halifax, Nova Scotia. "When I came to VCS in 1983, some of the receivers and traffic-list monitors had already been replaced with more up-to-date versions. Our entire operations building was renovated completely beginning in 1987, and the previous operations area is now an office/reception area for the station.

"The photos are those which appear on our latest QSL card. The larger photo shows some of the installed equipment. Not shown in the console picture are 3 positions dedicated to HF CW operations on 4 through 22 MHz (out of the picture, to the right), and the MF CW (500/484/446 kHz) position, which is behind the point of view of the camera."

Frequency limits of the new 8, 16, and 22 MHz CW working bands, previously mentioned in *POP'COMM*, are 8342.0 to 8365.5 kHz and 8371.0 to 8376.0 kHz, 16619.0 to 16683.0 kHz, and 22242.0 to 22279.0 kHz.

VCS has assigned a new CW frequency of 22619.5 kHz which replaces our old frequency of 22387.0 kHz. This is the only change to our HF CW frequencies, all the rest remaining the same.

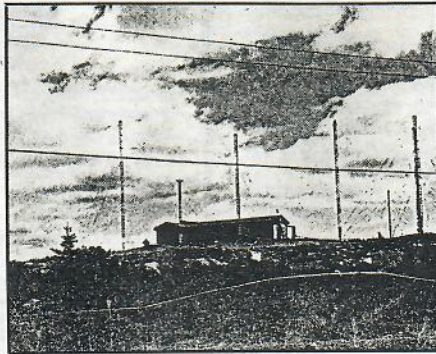
All of our HF radiotelephone and radiotelex frequencies have been changed, although the channel designators for HF R/T have remained the same (channels 418, 605, 823, 1213, 1604, and 2213)."

Our thanks to Robert for these updated details regarding the Canadian Coast Guard radio station.

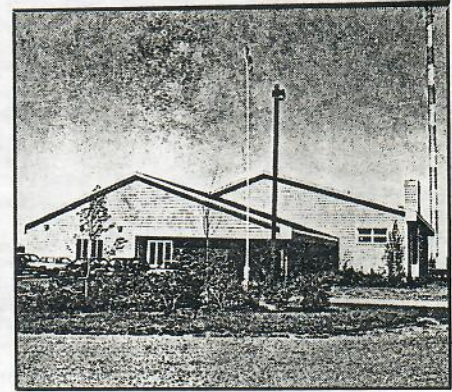
The next letter out of the mailbag was from Kurt Mueller who had monitored some of the SLHFB transmissions from his Switzerland location and then continued his coverage while on vacation in France using his SONY CRF-1 and the 2001D (2010). The latter receiver he finds useful for longwave listening because of its built-in ferrite loop antenna.

"Due to solar disturbances I made no great catches on shortwave. Instead, I spent many hours of my holidays searching for new longwave beacons. I found 55 new beacons which makes a total of 133 beacons from one location (100 km south of Lyon, France)! The most interesting beacons were as far away as Romania, Bulgaria, Czechoslovakia and Ukraine. I was most successful when listening after sunset between 8 and 10 pm.

Regarding the SLHFB's, there has recently been a change: for months only the "S" (and 1 "V") signals could be heard. Suddenly, during my holidays in Southern France I found "D", "P" and "C" plus a new one, an "F" transmission. These signals were not spaced at 500 Hz. There were approximately 200 Hz



These photos of Halifax station VCS (Canadian Coast Guard) were provided by Robert Ward, a member of the station. This first view is of the VCS Transmitter site at Pennant, Nova Scotia.



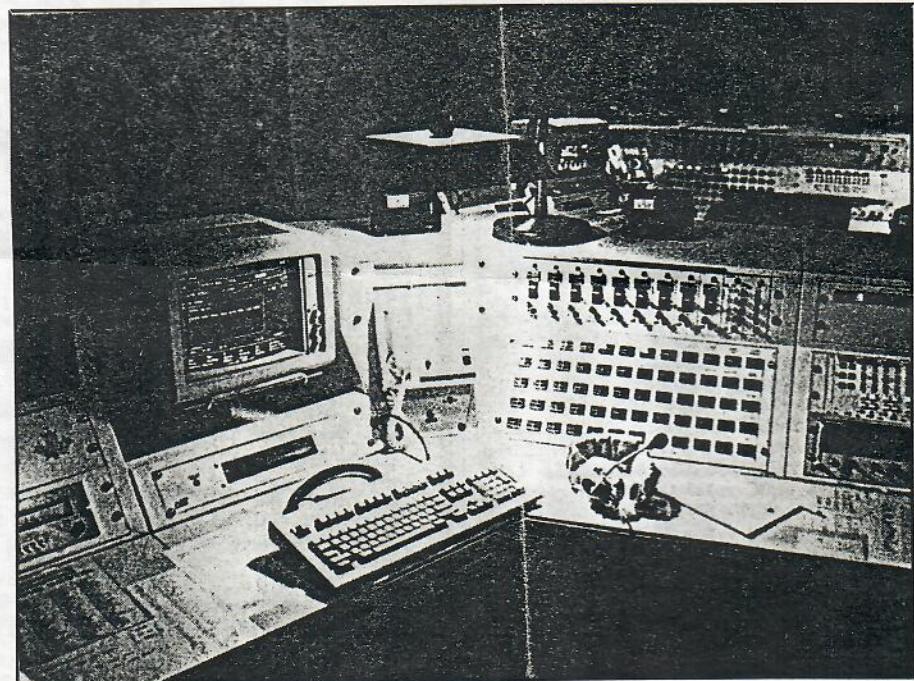
VCS Operations building located at Ketch Harbor, Nova Scotia.

apart with the exact spacing difficult to determine."

Here are the SLHFB observations made by Kurt: D, S, P and C were noted on 5305.5, 13635.5, 17015.5 (plus F) and 20991.5 kHz. S & V were heard on 7394.5 kHz; E on 14983 kHz; S on 6801.5, 8645.5, and 10643.5 kHz. The last observation was V on 10285 kHz.

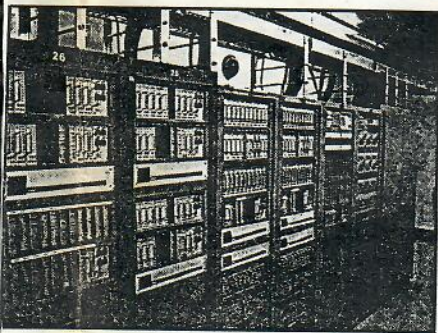
David Sabo, CA furnished two QSL addresses. SAL AERADIO, ASA - Empresa

Nacional de Aeroportos e Seguranca Area E.P., Aeroporto do Sal, Cabo Verde. The other address was: HMS EDINBURGH (D97), BFPO Ships, London, England. "The reply from the HMS EDINBURGH came in 18 days and included a personal letter from the communications officer on ship's stationery and a color postcard of the ship. The reply from Sal Aeradio took six months. It came in an oversized official envelope, but bore U.S. postage and a San Leandro, CA



Console position at VCS. Contains HF R/T & SITOR on upper level of console. Lower level contains MF/VHF R/T.





Equipment room in the VCS Operations building. The installation includes fixed-frequency receivers, VHF transmitters, switching units, etc.

To: David Sabo, Monterey, California, USA

**NHKW**

This confirms your reception of  
USCG CONFIDENCE (WMEC-618)  
on 8120 kHz USB/Voice at 0431 UTC on 5 April 1991.

Transmitter/Power: USC-116C7 (SERIAL CEB-900)/100W  
Antenna: 30 FT WHIP  
QTH: 28-12W 07B-43W (NORTHERN HAWAIIAN)

(Signature/Official Stamp)

NOTE: USCG CONFIDENCE (WMEC 618) WAS WORKING IN SUPPORT OF SPACE SHUTTLE ATLANTIS LAUNCH (STS-37). WE WERE THE DOOR RANGE SUPPORT VESSEL TASKED IN CASE OF ACCIDENT.

RESPECTFULLY,

*N.A. Rasico*  
N. A. RASICO, R01, USCG  
RADIOMAN-IN-CHARGE  
USCG CONFIDENCE (WMEC 618)

PFC from David Sabo, CA.

postmark (????). Both stations returned my IRCs. Generally speaking, I've noticed that if I don't get a reply within a month's time I can usually write it off. I keep track of my QSL's in a computer database, and right now it's showing a return rate of 67%."

Rick Fenlon, OH says he uses an ICOM R71A with a twenty foot longwire antenna for his monitoring.

Richard Weil, MN does a little SWL'ing with a 1962-vintage AIWA receiver in his bedroom using a telescoping whip antenna but results have been marginal, with only strong DX or North American stations coming through regularly.

The POP'COMM RTTY editor, Bob Margolis, has provided some possible IDs for loggings that appeared in the May Communications Confidential column; on 4232 kHz FUF, French Navy, Fort de France, Martinique; and HWN, Paris NAVRAD, France, have been logged this freq in the past. The station on 9218 kHz was probably RIT, Vaygach NAVRAD, USSR. Thanks Bob for the above clarifications.

Roger Hislop, MN reported he picked up two navigational beacons on a car radio. He heard RRQ, Rock Rapids, IA on 515 kHz and ORC, Orange City, IA on 521 kHz.

From Jack Pfister, NJ we heard that he particularly enjoyed the Aero bands during the Desert Storm operation. He monitored "scud missile alerts" broadcast on the first night of

the Allied bombing raids. He also caught a few hams making personal phone patches to home while they were returning to European bases following missions over Iraq. "Current crop of equipment for copying UTES includes a Kenwood R-5000 hitched to a trap dipole, a Yaesu FRG-8800 on a vertical, an ICOM R-7000 with a Diamond Discone with a mast mounted preamp and a Uniden CR-2021 on the desk at work! Had everybody gathered in my office listening during the war."

I have received some more queries for HF CW press in the English language. Such activity has been replaced by other modes or transmission. There is still a substantial amount of foreign press on HF RTTY with many schedules in the English language. A current reference for these is the World Press Services Frequencies (5th Edition) by Tom Harrington and available from various POP'COMM advertisers.

Earlier I had been advised that the MARS callsign for the USS George Washington was to be NNNONGW but I have just learned that this was not correct. The callsign will be NNNOCYA.

#### Ute Intercepts. All Times UTC

- 206: Beacon GLS, Galveston, TX at 1208. (Christian, LA)
- 212: Beacon HP, Hammond, LA at 1105. (Christian, LA)
- 246: Beacon PTN, Patterson, LA at 1155. (Christian, LA)
- 253: Beacon H8, Alma, PQ, Canada at 1122. New ID; ex-YTF. (Crabill, VA)
- 260: Beacon BYN, Bryan, OH at 0913; Beacon MTH, Marathon, FL at 1128. (Crabill, VA)
- 268: Beacon VKN, Montpelier, VT at 0911; Beacon URX, Bagotville, PQ, Canada at 1139. (Crabill, VA)
- 284: Beacon BT, Baton Rouge, LA at 0205. (Christian, LA)
- 292: Beacon MIQ, Maiquetia, Venezuela at 1014. (Crabill, VA)
- 302: Beacon EAG, Eagle Grove, IA at 1210. (Crabill, VA)
- 315: Beacon SL, Sevilla, Spain at 0029. (Mueller, France)
- 316: Beacon M, Southwest Pass, LA at 1130. (Christian, LA)
- 325: Beacon UT, Calcasieu Pass, LA at 0235. (Christian, LA)
- 326: Beacon PKZ, Pensacola, FL at 0244. (Christian, LA)
- 338: Beacon MS, New Orleans, LA at 1115. (Christian, LA)
- 349: Beacon OPE, Bucuresti-Otapeni, Romania at 0128. (Mueller, France)
- 353: Beacon YAW, Shearwater CFB, NS, Canada at 0149. (Crabill, VA)
- 371: Beacon FNA, Slidell, LA at 1125. (Christian, LA)
- 382: Beacon APT, Jasper, TN at 0431; Beacon RD, Raleigh, NC at 0252. (Crabill, VA)
- 392: Beacon DVN, Split, Yugoslavia at 2045. (Mueller, France)
- 413.5: Beacon GLT, Galati, Romania at 2032. (Mueller, France)
- 415: Beacon RUS, Ruse, Bulgaria at 2032. (Mueller, France)
- 418: Beacon PW, Poprad-West, Czechoslovakia at 2034. (Mueller, France)
- 429: OXB, Blaavand, Denmark in CW at 2250 w/tfc list. (Boender, Netherlands)
- 444: UVMA, MV Jak Diouklo c/g Norddeich Radio in CW at 0935; TJFD, MV Bjoerg Jonsdottir c/g Norddeich in CW at 1123. (Boender, Netherlands)
- 458: GND, Stonehaven, UK in CW at 0845 w/wx. (Boender, Netherlands)

490: Beacon LD, Staryava, Ukraine (USSR) at 2137. (Mueller, France)

491: Beacon HDM, Coleman AAF, Heidelberg, Germany at 2133. (Mueller, France)

492: Beacon TBV, Moravska Trebova, Czechoslovakia at 2137. (Mueller, France)

500: GNF, North Foreland, UK in CW at 1053 announcing Gale Warnings. (Boender, Netherlands)

2716: NMYO, USS James Madison SSBN627 (4-Uniform-Golf) c/g Canaveral Control at 1000. Sub was using the range for tests and had pulled into Canaveral; NJJC, USS Clark FFG11 c/g Newport Port Control at 1045; NCAR, USS Carr FFG52 c/g Charleston Tug Control at 1045; NICK, USS Nicholson DD982 c/g Newport Port Control at 1115. DD982 is homeported at Charleston, SC and was 1/2;omg, omtg Newport for fuel. (Stuart, DE)

3069: ABNORMAL-10 (Vandenberg AFB, CA) w/short test counts and ID in USB at 0743. (Sabo, CA)

3179: K0I w/unanswered calls to P0B, then cld G8T (not hrd) and asked him if he had comms w/P0B. USB at 0452. This is a USN channel. (Sabo, CA)

4010: DFD21 (DBP, Frankfurt, Germany), YL/GG w/5F grps at 1949. (Mueller, France)

4011: YL/EE w/1-0 count and 788 from 1900-1910 next to GG nbrs stn DFD21 on 4010 kHz. At 1910 ten tones, Count 159 and into 3/2F grps. Also on 5137 kHz and rptd a week later. (Mason, England)

4066.1: NWPB, USS Dixon AS37 w/calls to San Diego CSS-1 (NPL) and request for p/p. San Diego advised vsl that he was weak and barely readable and to QSY to CSS-2 freq. USB at 0403 and duplex 4360.5 kHz. (Sabo, CA)

4376: USCG vsls S1E and K2M w/lots of talk of discrepancy in report in Miers light being extinguished, and how that would affect S1E's arrival at K2M. Went on for some time, during the course of which COMMSTA Portsmouth (NMN) came up and tried make contact with NHXX, USS El Paso LKA117 and NAFO, USCGC Cowslip WLB277. USB and intermittent comms 0351-0415. (Cabo, CA)

4555: OM/EE announcing Capital Switch operator 26 in LSB. On USB Vesper and Thunder w/discussion of switch boards. Hrd at 0329. (Willmer, MI)

4596: WHITE LIGHTENING w/rdo check to TROPICAL in USB at 0756 advising that he'd give him a rdo check on the tac command net night freq in 5 miles. (Sabo, CA)

4637.5: KMZ322/Rowan Base, Houston, conducting net roll call of Rowan oil rigs. USB at 0852. Stns hrd incl WYU8967, Rowan Alaska; WHU8968, Rowan Louisiana; Rig 44; and Rig 4. Was still going strong at 0907. At 0902, WRB669, Houston (diff opr) came up and talked to Rig-28, Yorktown, but not sure if she was the same net. All very hard to hear. (Sabo, CA)

5080: PLEAD CONTROL (NTD, PMFR, Point Mugu, CA) w/g N4K and Y1P in USB at 0005. Great sigs on all and hrd intermittently for about an hour. Y1P was apparently a USN vsl conducting firing practice at the range: talked about launching two "MARK-182-MOD-1's" at 2 min separation. (Sabo, CA)

5277: Scrambled speech, then u/i stn w/comms to PANTHER-02. 02 was apparently answering back in scrambled mode. USB at 0738. This is Customs Service "A" channel. (Sabo, CA)

5305.5: SLHFB "P" at 0325. (Mueller, France)

5426: KRH50, US Embassy, London, England in CW at 0454 w/QSX info and periodic breaks for high speed CW t/c. (Scalzo, PQ, Canada)

5430: CDG206, Alma, Quebec, Canada, w/Forest Fire warnings for lower North shore and areas. In FF USB 0440. (Scalzo, PQ, Canada)

5718: MEDEVAC-5453 in USB at 0636-0637 to Halifax Military (CFH) w/request for ambulance, oxygen, suction, monitor, and respiratory technician upon his arrival at RCCA but Halifax unable copy. St. Johns Military (CJX) then attempted contact w/5453 but a/c didn't answer. I had fivers on all. (Sabo, CA)

5754: U/i stn w/coded t/c in CW. RAF has been reported this freq. Hrd at 0558. (Scalzo, PQ, Canada)

5770: YL rptng Yankee Sierra w/elec ton as 2000-2005. Then GG 5F grps for 635 and 027. (Mason, England)

5841: Weak scrambled comms hrd here in USB at 0738j. this is Customs Service "B" channel. (Sabo, CA)

6371.5: GYU, Gibraltar Navrad Brazil in CW at 0321 w/mkr. (Scalzo, PQ, Canada)



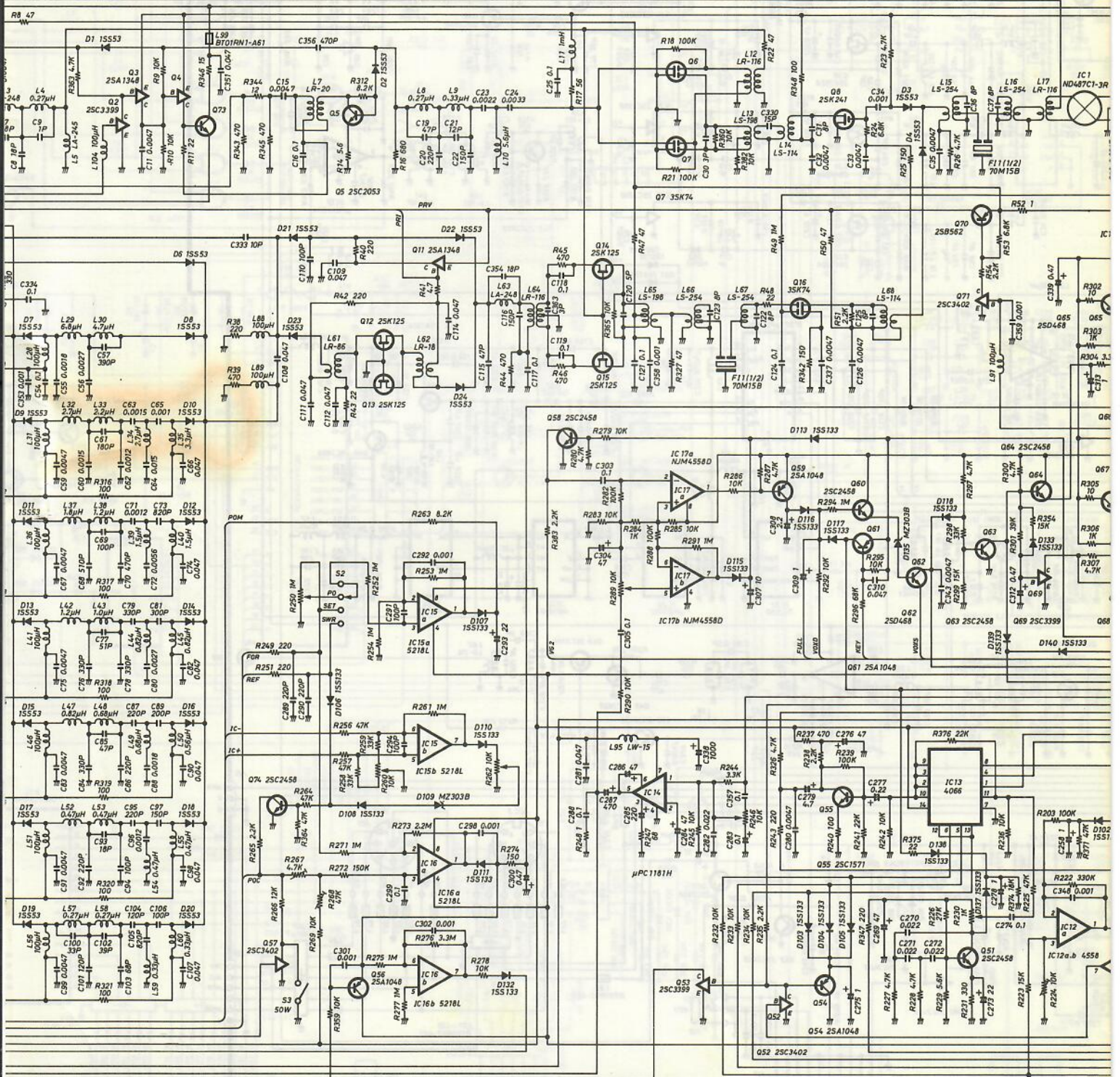




## MAIN

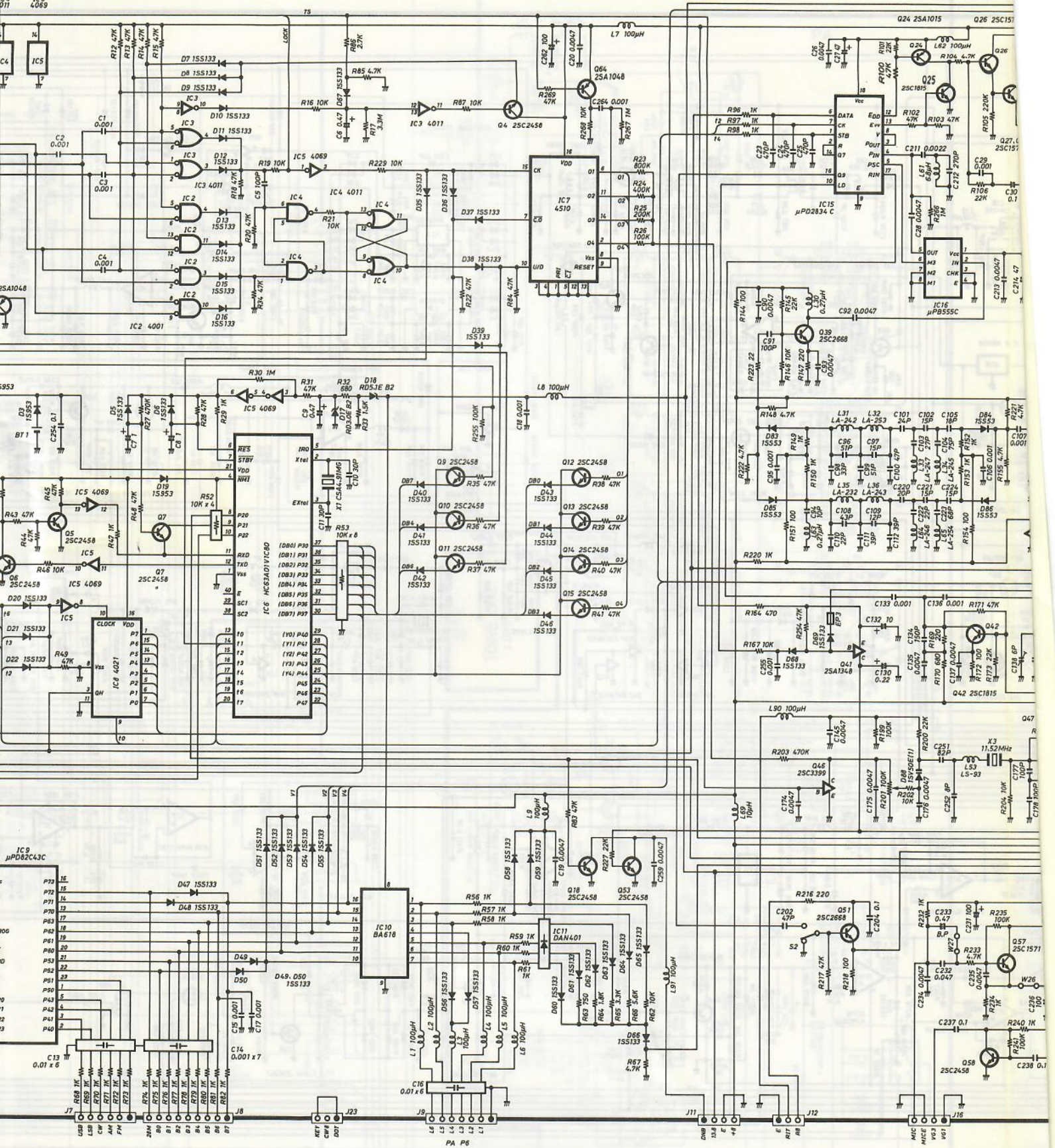
Q4 25A1348 Q73 25D468

Q6 35K74

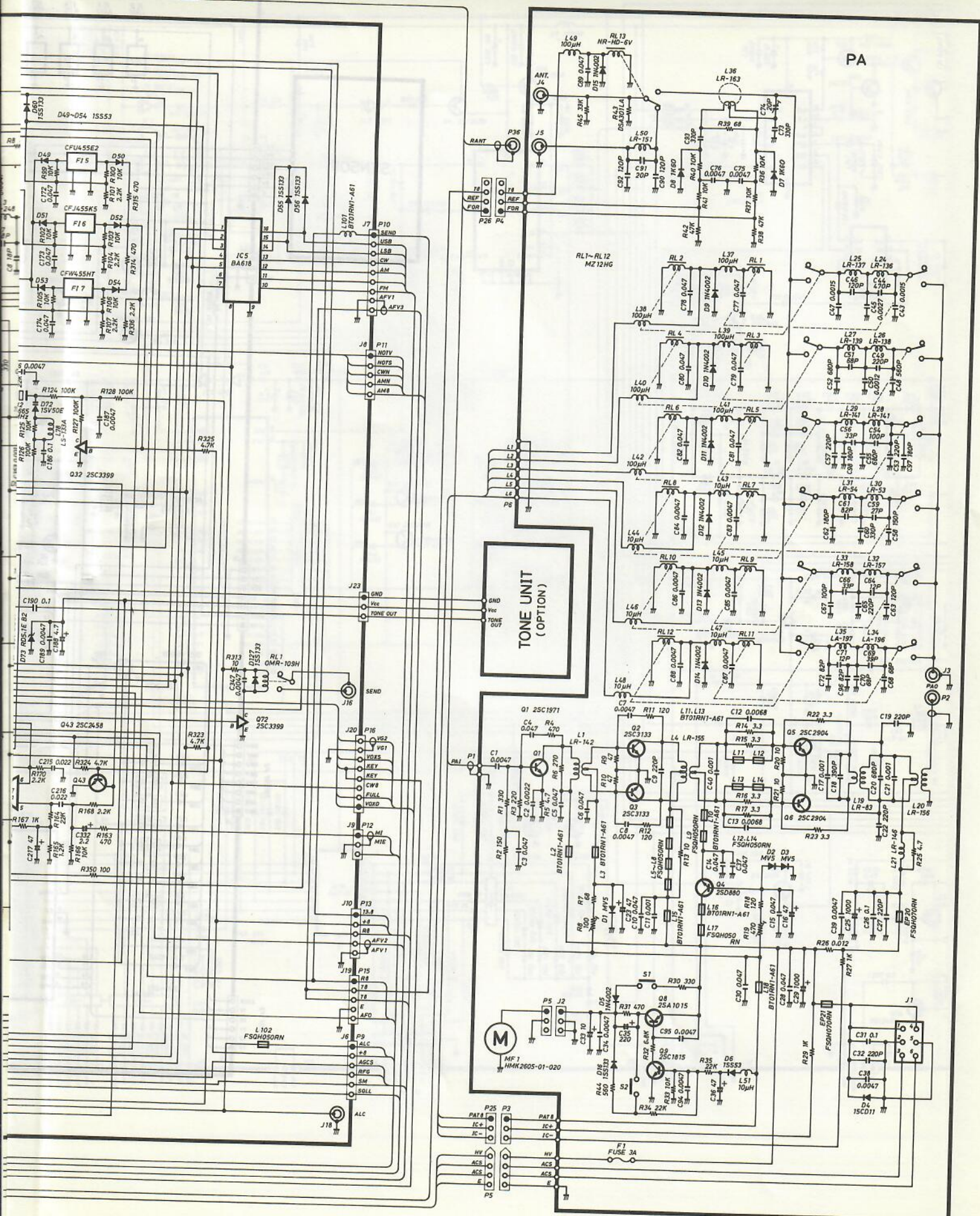




PL







PA

TONE UNIT  
(OPTION)



# IC-735 SCHEMATIC DIAGR

