

HARRY E. FINCH
32101 PACIFIC CST
MALIBU, CALIF.
9026576

U.S. POSTAL SERVICE
1976
APR 13



First Class

— GEORGE SALAZS —
UNIVERSITY OF HAWAII
HAWAII INSTITUTE OF MARINE BIOLOGY
COCONUT ISLAND — P.O. Box-1346

KANEHOE, HAWAII

First Class

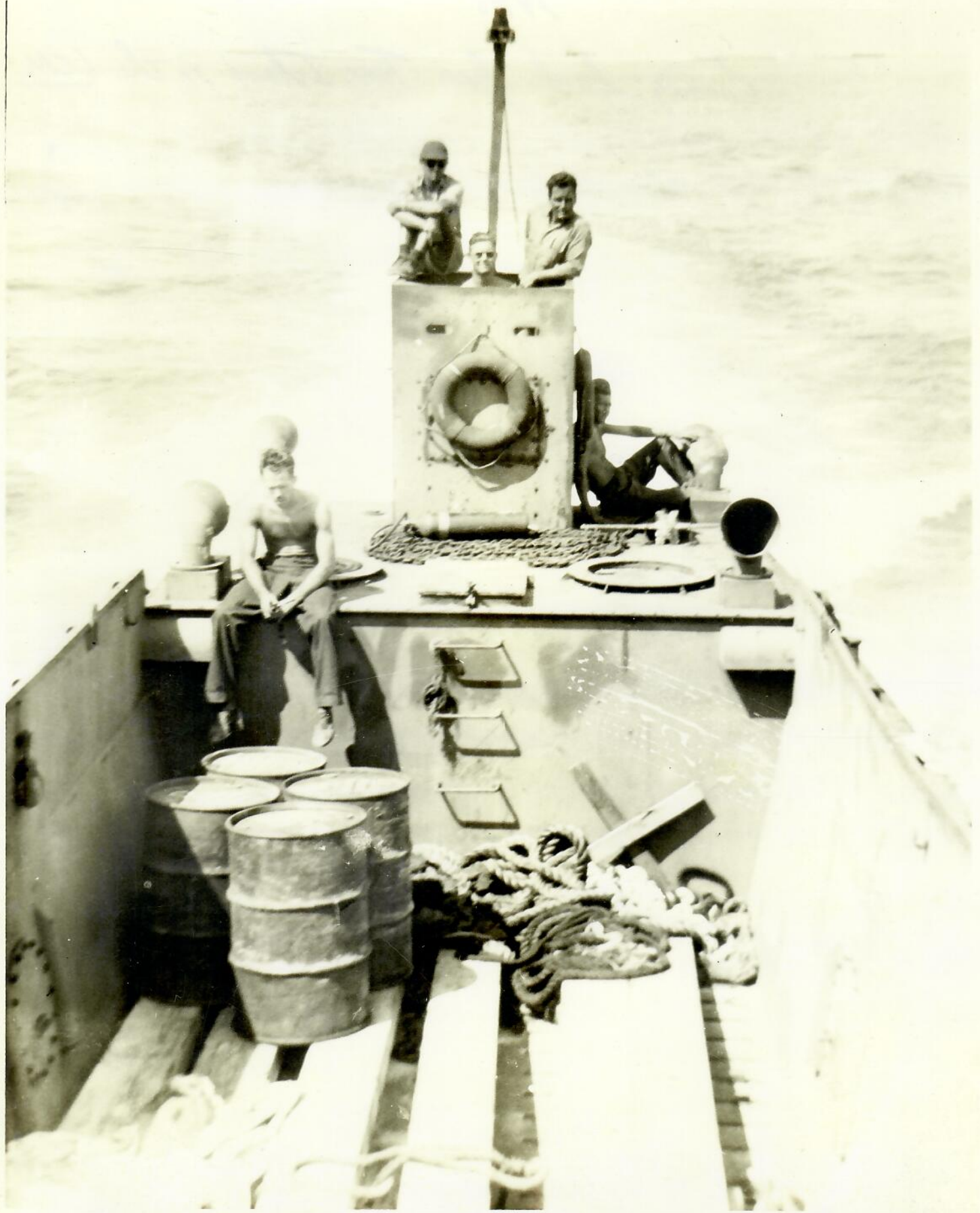
96724



1945 - East Island
Out House

View taken from up on antenna
(Looking SSW) pole.

This is a 2-holer; that also
had a hand spear handy for
spearing fish.



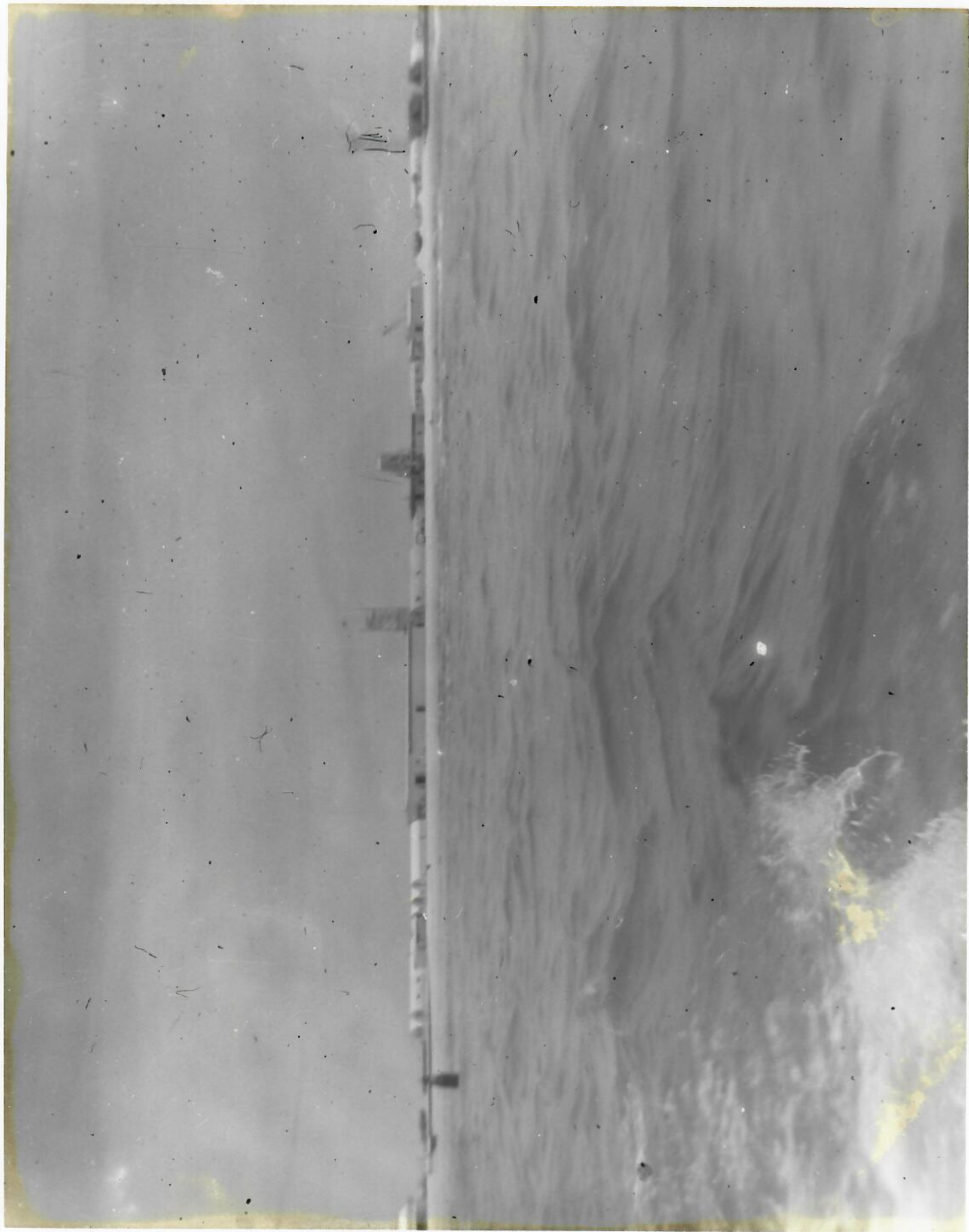
1945

Coming back from Tern Island on the LCM,



Teen Island - 1995

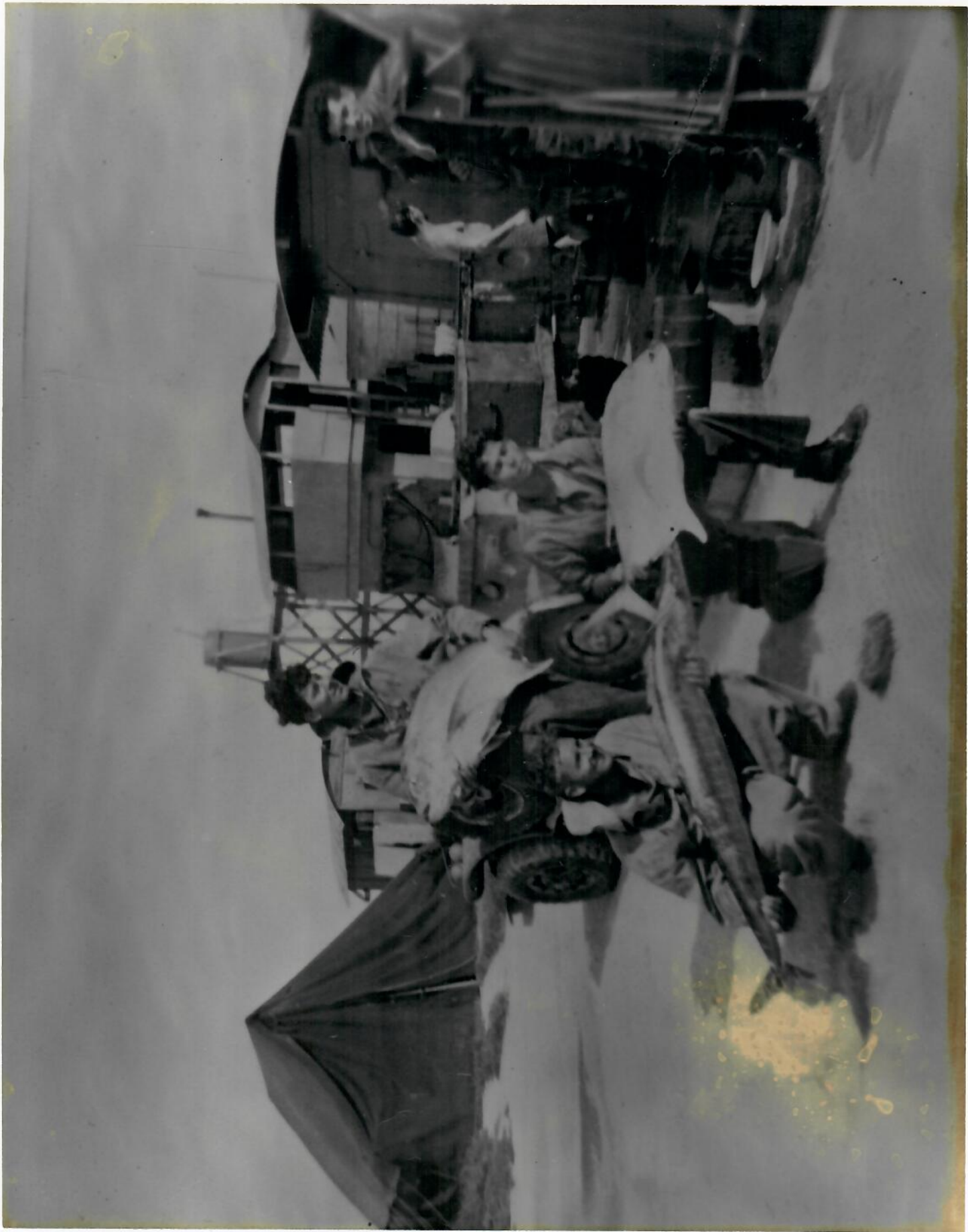
View from the NW corner. Aircraft control tower in center of photo.



—1945—

Just leaving Tsien Island and coming out
via the dredged channel.

The tower on extreme right
was the radar tower on N/side
of Island.



— 1945 —

East Island (Gooney Bird Is.)

— looking due East. —

This view includes the Wegonia Carrier Vehicle, The 2-Story Boiler House and Water Tank in front of it. The small water tank that provided gravity water pressure. The tent and storage shed. The freezer and mess hall quonset hut on right. I'm down on my right knee holding an alba, and a radium lantern the O.V.O.