

EMMET FINCH  
22101 - Pac. Cst. Hwy.  
MALIBU, 90265, CA.



FIRST CLASS

GEORGE SALAZAR  
UNIVERSITY OF HAWAII  
HAWAII INSTITUTE OF MARINE BIOLOGY  
P.O. Box 1346 - Coconut Is.

KANEHOHE

HAWAII,

96744

FIRST CLASS



PICTURE TAKEN IN 1985  
AT GOONEY BIRD ISLAND (EAST IS.)  
(LOOKING N/E)

A COUPLE SHARKS THAT WERE  
CAUGHT WITHIN 10' OF SHORE.  
THAT'S ME STANDING BETWEEN THEM.

Those rollers, in sand, at left of  
photo was used to remove the  
25' motor surf boat from water  
for overhauls.

Emmett Finch



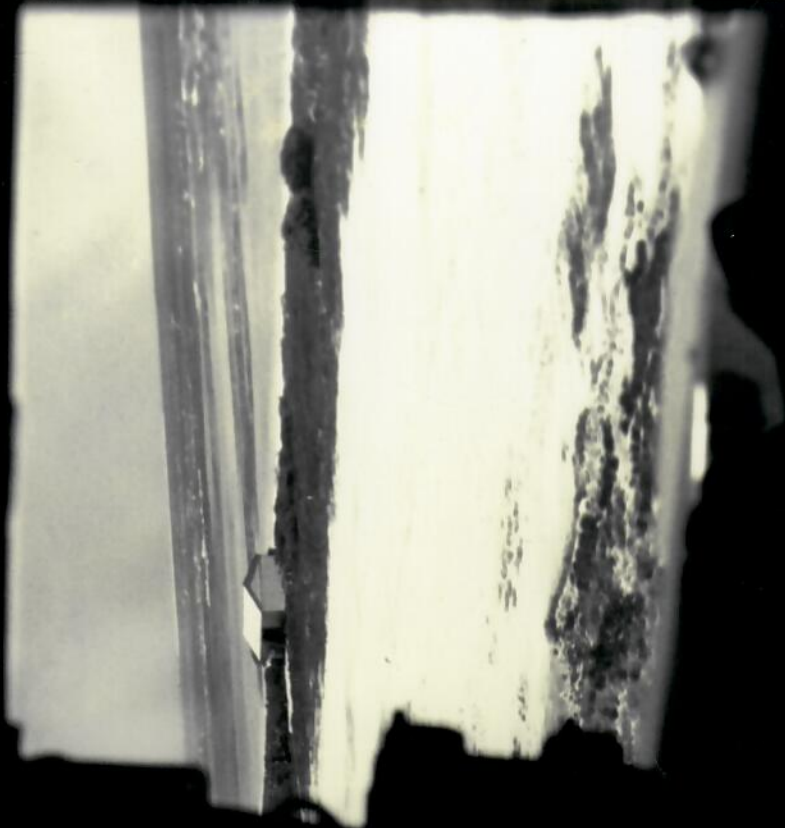
1945  
on the pier - at GBI



MAY 12TH 1976  
AT G.B.I., 145 pm

MAY 76







From Lita Rollison  
0550  
-5261



From Lt. Rollison

EAST IS.

1975



EAST IS,  
1985

TAKEN FROM THE N/W END OF IS,