

FROM —
E. FINCH
2101 - P.O. Nr
AT 180, 90265

U.S. AIR SERVICE
MAR 4 1976
PM
90265



FIRST CLASS

— MR. GEORGE BALAZS —
UNIVERSITY OF HAWAII AT MANOA
HAWAII INSTITUTE OF MARINE BIOLOGY
P.O. Box - 1346, COCONUT IS.

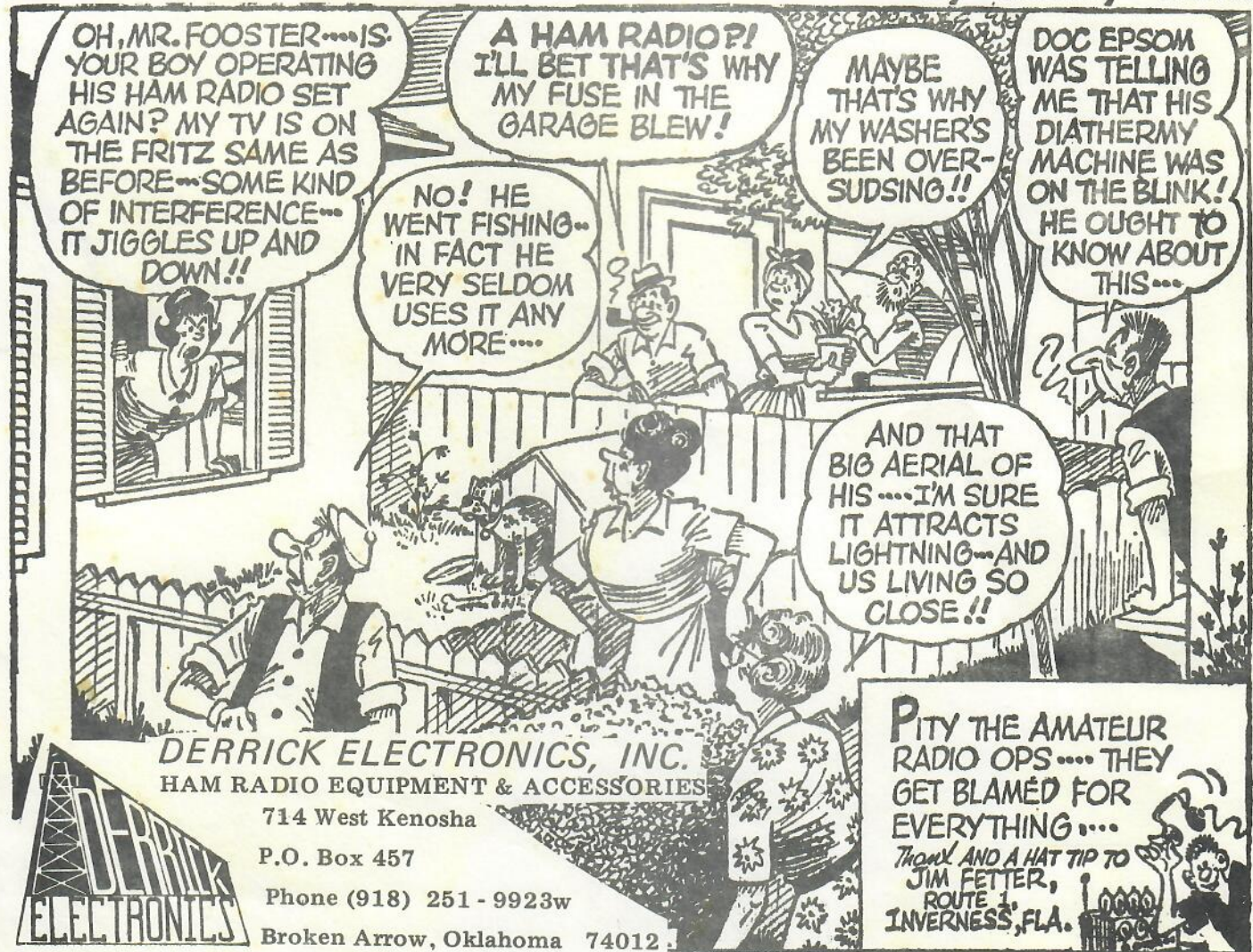
KANEHOE,
HAWAII

PHOTOGRAPHS BEND
PLEASE

96744

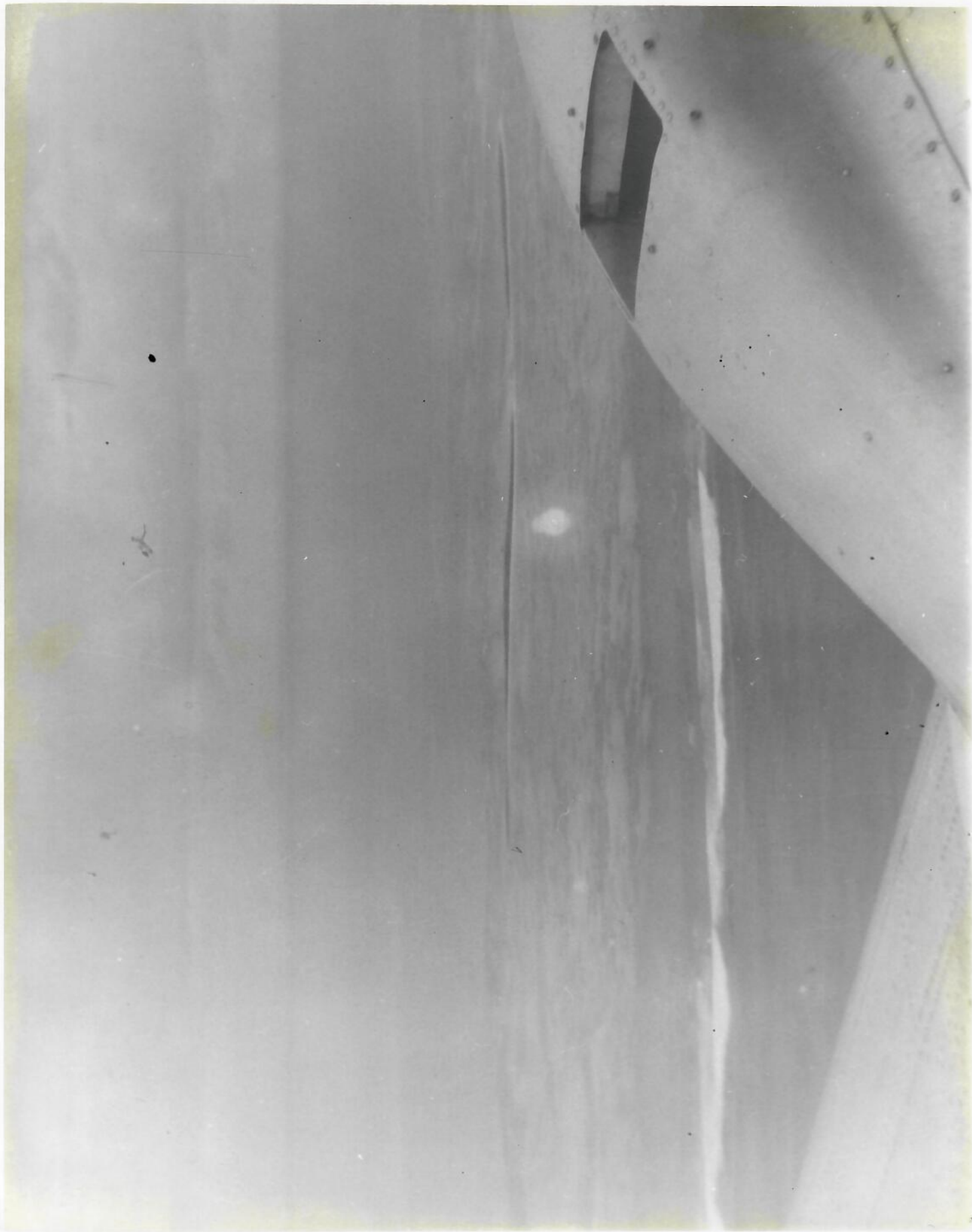
To: George, with Best Wishes, from, Emmett

THEY'LL DO IT EVERY TIME - - - - - By Jimmy Hatlo





AT THE "EAST IS" PIER
1985



JUNE - 1945

1130 HRS.

WHALE & SKATE ISLAND — LOOKING TOWARDS S/W.

THE CHANNEL BETWEEN THE ISLANDS IS QUITE VISIBLE.

H. EMMETT FINCA
32101 - PACIFIC COAST HWY.
MALIBU, 90265, Ca.



LEWIS ISLAND
East

(GOONEY BIRD IS.) LORAN STA.

1945 CALLED UNIT-203, SLAVE STATION

INSIDE THE "TIMER ROOM".

HARRY EMMETT FINCH
32101- PACIFIC COAST HWY.
MALIBU, CA, 90265

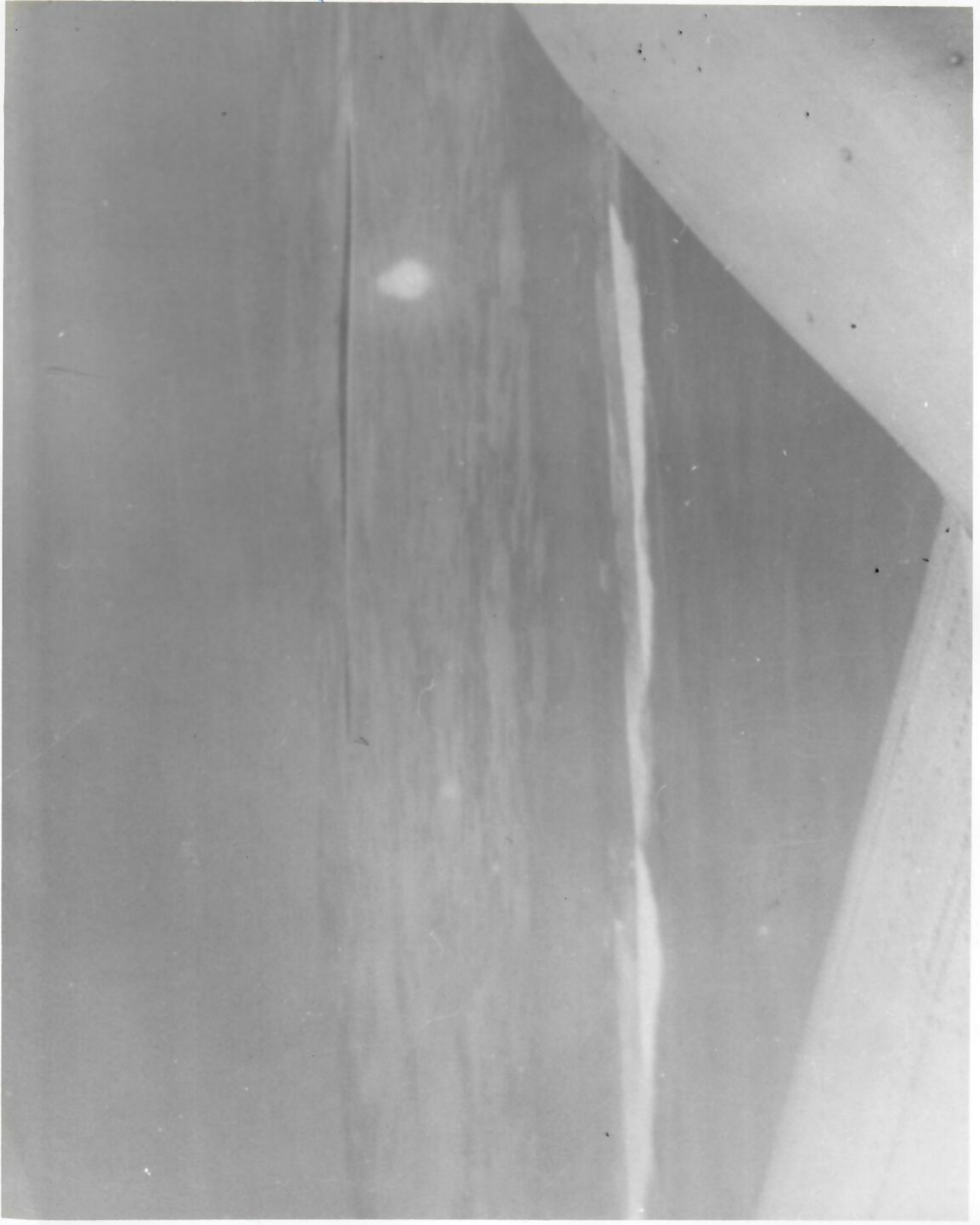


JUNE - 1945

1130 HRS

CLOSE UP VIEW OF WHALE & SKATE ISLAND SHOWING
THE CHANNEL BETWEEN

← CHAMBER



JUNE - 1945

CLOSE UP VIEW OF WHALE IS... THE CHANNEL IS AT
THE RIGHT OF PICTURE.



EAST ISLAND (GOONEY BIRD ISLAND) 1945

SHARKS CAUGHT NEAR THE SWIMMING RAFT,

I'M 6'4" TALL, SO SIZE OF SHARKS CAN BE
APPROXIMATED (8'?)



JUNE - 1945

1130 HRS.

TRIG ISLAND — LOOKING SOUTH, BEFORE
LANDING AT "TERN".



JUNE - 1945

APPROACHING TERN, FOR A ~~LANDING~~, 1145 HRS.
THE TALL TOWER ON N/SIDE OF ISLAND IS THE RADAR.
AIRCRAFT CONTROL TOWER IS ON THE SOUTH SIDE.



JUNE - 1945

1130 HRS.

TRIG ISLAND ON LEFT, AND TERN ISLAND BARELY
VISIBLE IN CENTER OF PICTURE,



5 DAYS TO
ARTMENT
OFFICES
HILL STREET

E. Fiach
32101-PCA,
Malibu, 90265, Ca.

FOR INTRA-DEPARTMENT USE

Nov. — 1945

UNIT-204 LORAN STA.

AT THE TOWER BASE.

Man on extreme left, and the one
on my right came out to make
adjustments on the Timer to
provide 2 microsecs markers.



VJ-DAY
OUTSIDE OF MESS SHACK



8

VJ-DAY

1945

LT. RASHTI, FRONT ROW, WITH SHIRT



— 1945 —
from S/E end of Is.

GEORGE H. BALAZS



— 1945 —

Taken from up on the pole
at NW end of Island.

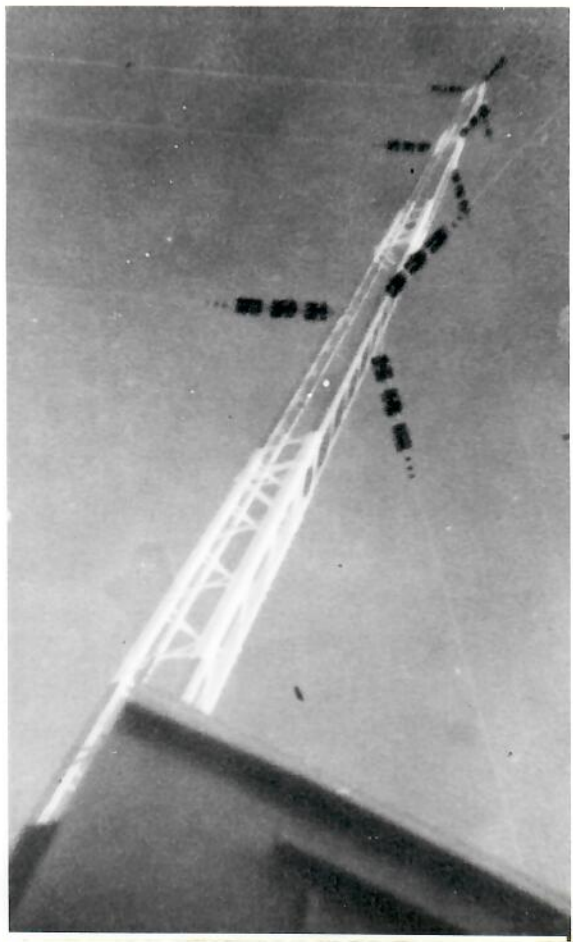
Note the concrete base
of the flag pole.

The 25' surf boat is
pulled out alongside the
pier.

— 1945 —

Taken from up on the pole
at NW end of Island.
Note the concrete base
of the flag pole.

The 25' surf boat is
pulled out alongside the
pier.







July 1977

Station, W6 PWF