

EMMETT FINCH  
7101 - P.O. H.  
MALIBU, 90265, Ca



**FIRST CLASS**

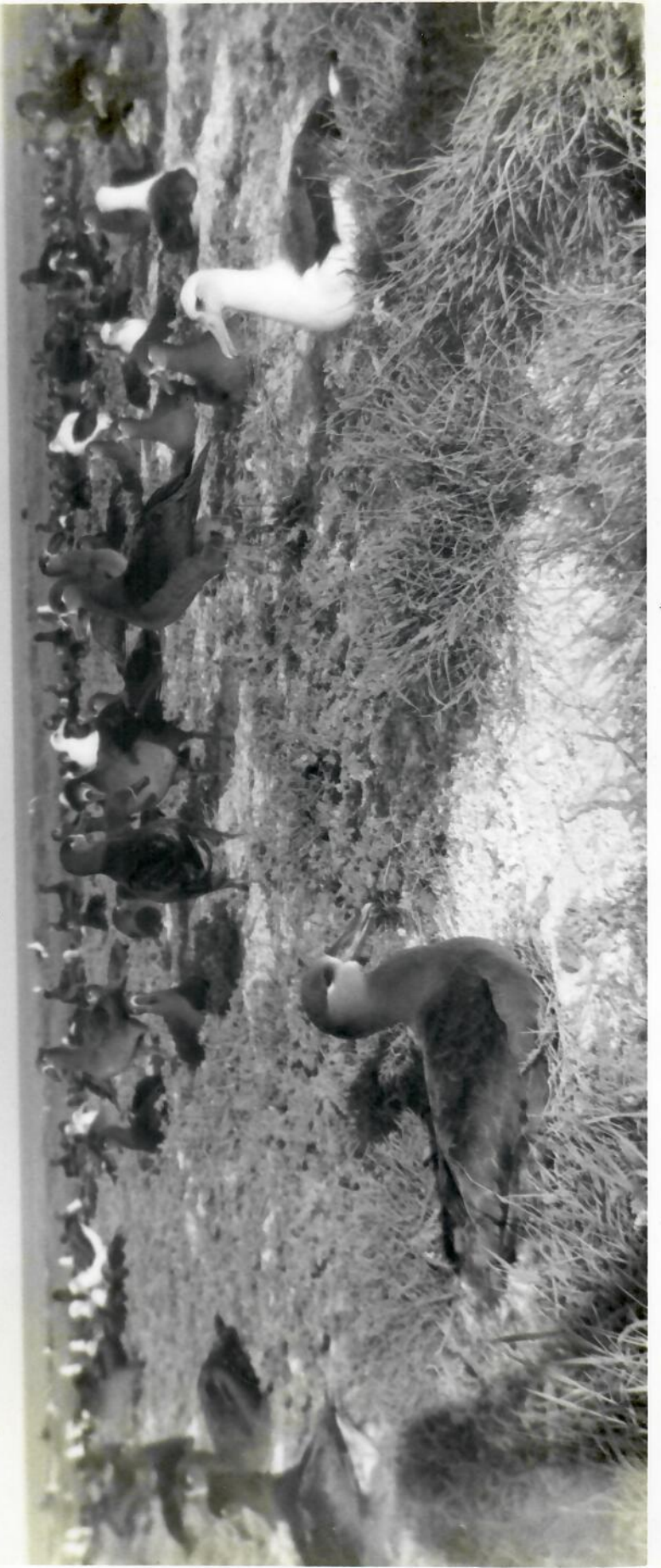
AIRMAIL

GEORGE BALAZS  
UNIVERSITY OF HAWAII  
INSTITUTE OF MARINE BIOLOGY  
COCONUT IS., P.O. BOX - 1346  
KANEHOE,

HAWAII

96744

AIRMAIL



1945

W. R. R. F. S.

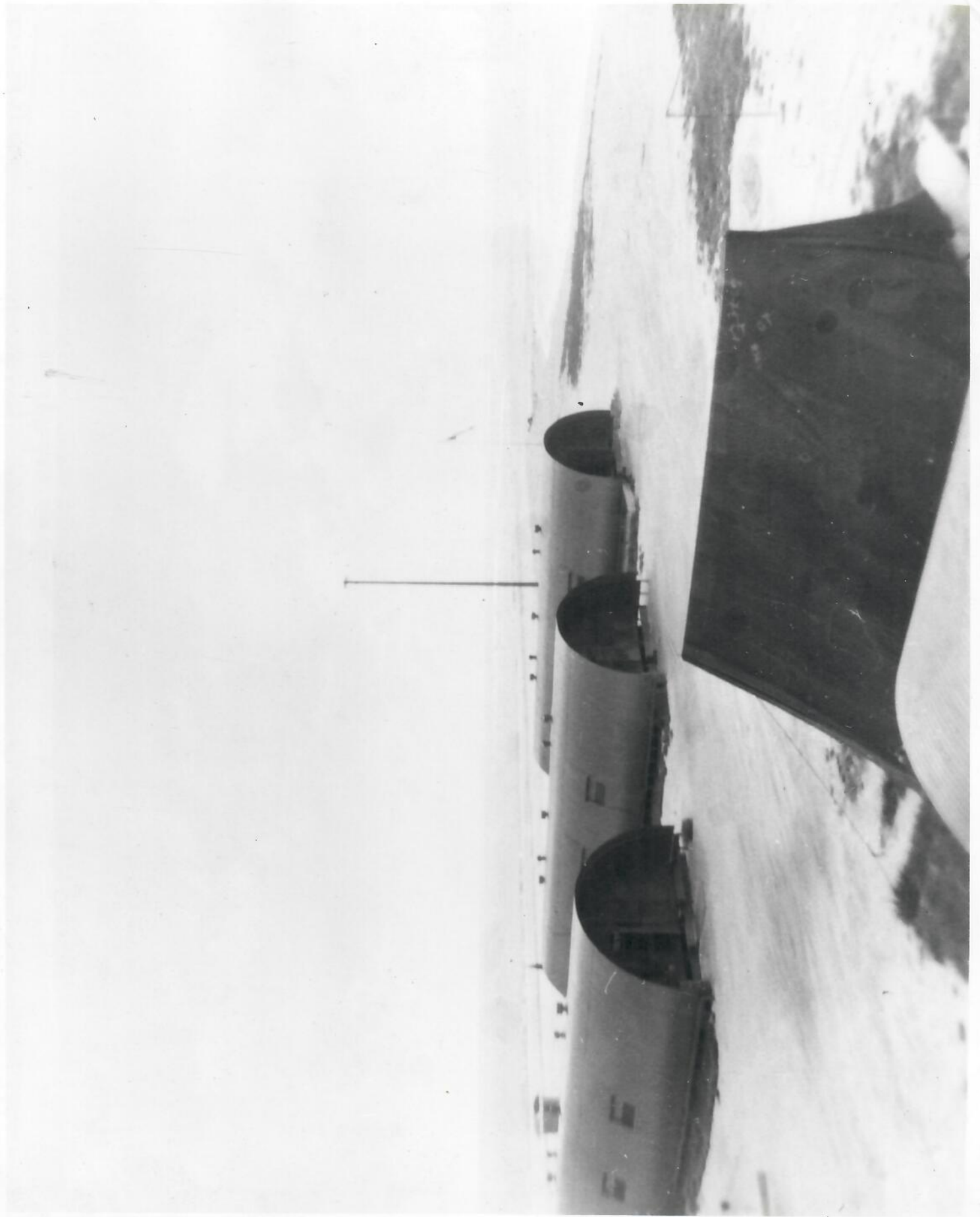


EAST ISLAND - 1945

LOOKING N/E

THE 96' PIER — 85' MOTOR SURF BOAT. (BUDD DIESEL ENG.)

2 - MEN ON SWIMMING RAFT, & ROWBOAT.



EAST ISLAND

looking N/W from the top of  
the Boiler Hut.

1945

GEORGE H. BALAZS



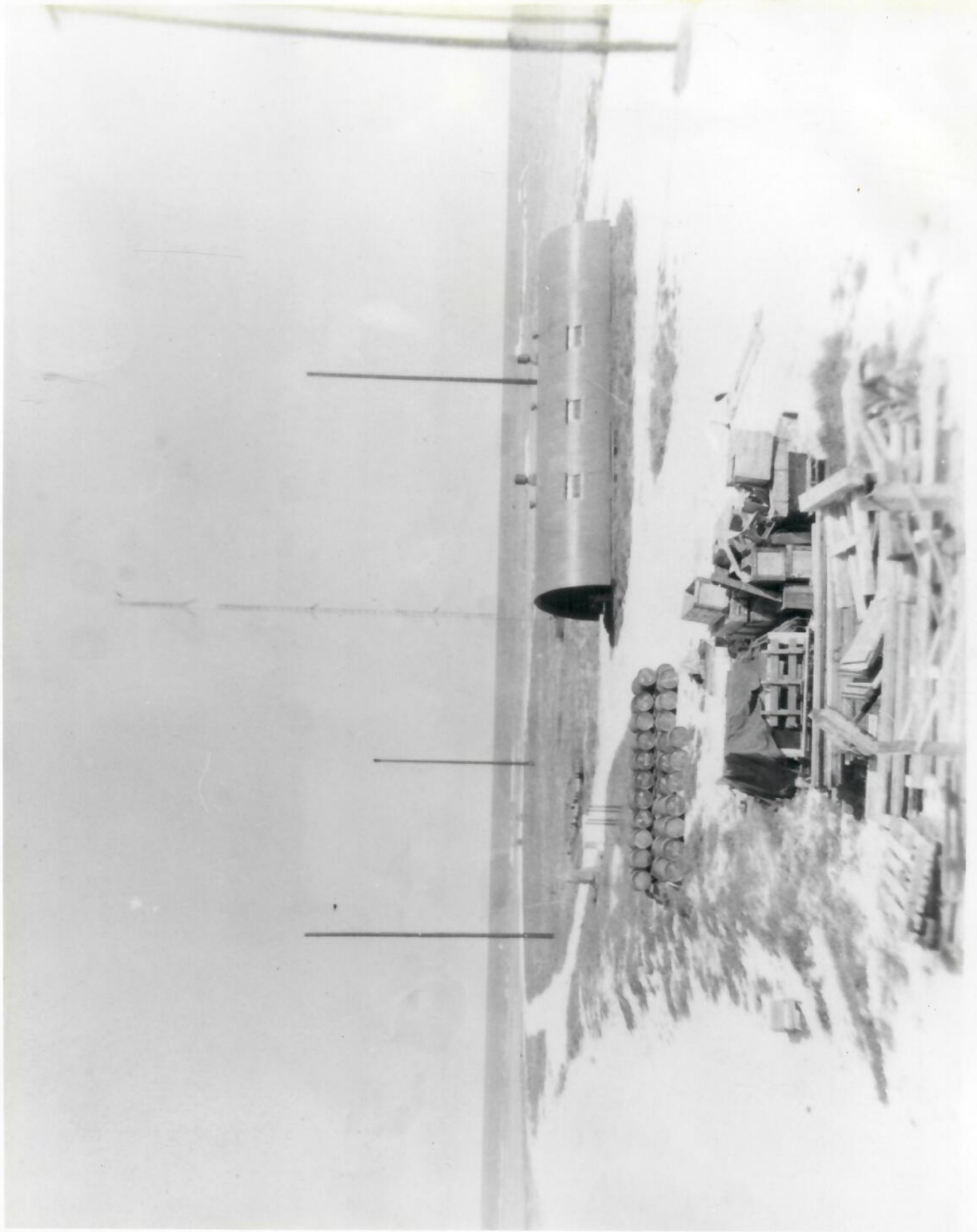


EAST ISLAND - 1945

GEORGE H. BALAZS

LOOKING S/E. TAKEN FROM ABOUT  
30' OF ELEVATION FROM POLE AT N/W  
END OF ISLAND.

GUN MOUNT, 20-MM, & FUEL BARRELS  
ON LOWER RIGHT.

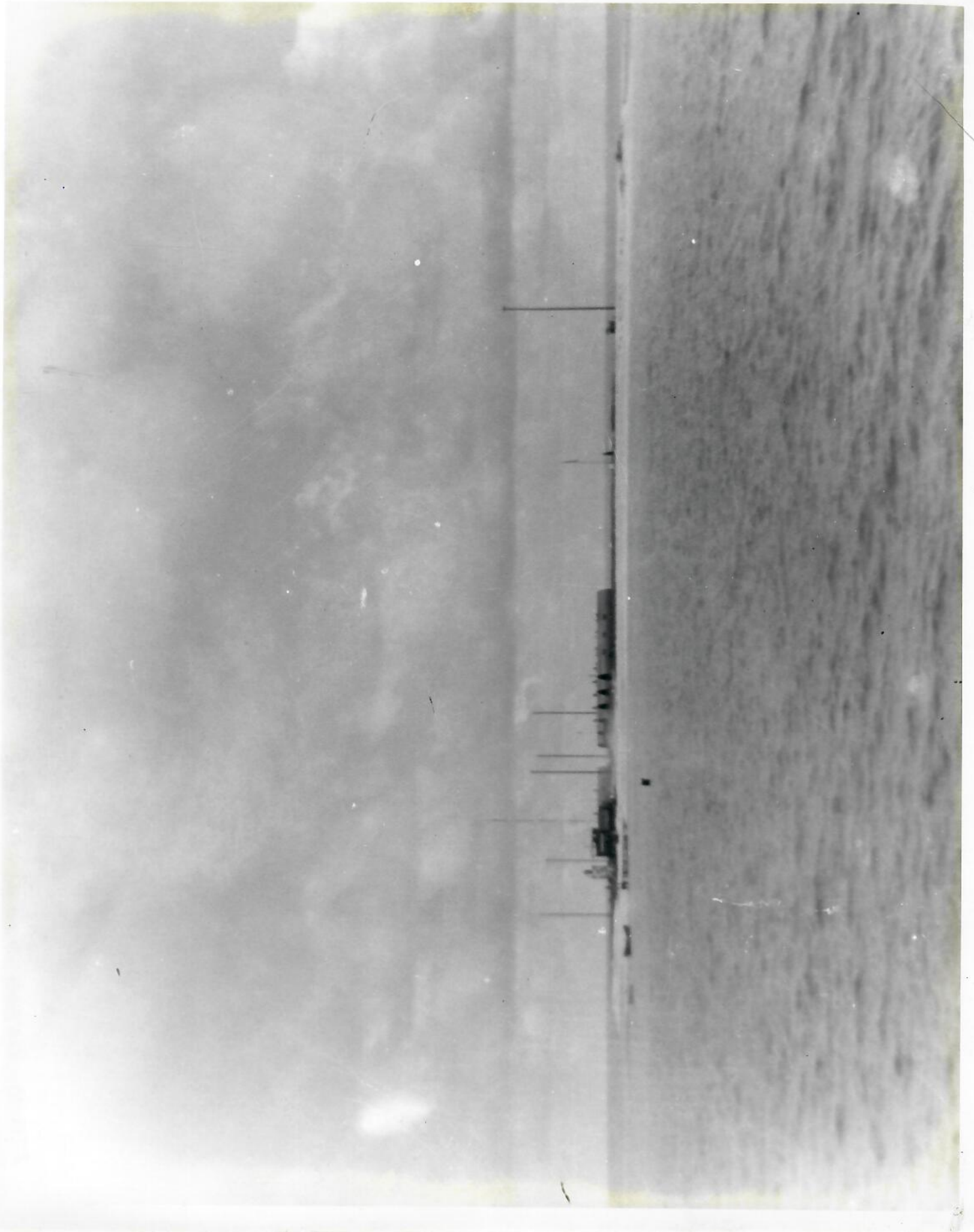


South End of East Is.

1945

THE LARGE POLE IN RIGHT FOREGROUND  
IS APPARENTLY THE POLE WHICH IS STILL  
STANDING... AS IT WAS IN THE APPROX-  
IMATE CENTER OF IS.

This photo may give you an idea of  
the size of East Is. in the 40's.



TERN ISLAND (GOONEY BIRD IS.) LORAN STATION, FRENCH FRIGATE SHOALS

— 1945 —

THIS PHOTO WAS TAKEN, WHILE APPROACHING THE ISLAND FROM THE NORTH, THE 25' MOTOR-SURF-BOAT IS ANCHORED OFF OF THE SMALL PIER. THE BUOY IN FOREGROUND IS FOR MOORING THE LCM.

THE FIRST QUONSET HUT IN FOREGROUND IS THE CAPT'S (C.O.) QUARTERS & OFFICE & REC. ROOM,

SECOND QUONSET HUT & BED FOR CREWS QUARTERS.

FOURTH " " IS MESS HALL,

FIFTH " " IS SUPPLY HUT,

SIXTH " " IS DIESEL GEN. & POWER HUT.

THE LAST QUONSET HUT IS FOR THE LORAN EQUIPMENT.

THE DARK STRUCTURES TO LEFT OF QUONSET HUTS ARE THE BOILER HUT & WATER MAKING STILL — THE LARGE REDWOOD WATER TANK — & DARKROOM,

IF MORE COPIES ARE DESIRED — PLEASE CONTACT —>

H. EMMETT FINCH  
32101 - Pacific Coast Hwy,  
MALIBU, 90265, Ca.

GEORGE H. BALAZS



Tern Is. 1945

SHOWING THE CRANE — AND THE RADAR TOWER  
BEHIND IT.

GEORGE H. DALAZS







EAST ISLAND

1945

LORAN  
STA.

2-story Boiler House & water distillation  
hut.

Weapons carrier vehicle.

Walk-in freezer on right.

MESS HALL QUONSET HUT AT EXTREME RIGHT.

WHALE & SKATE IS. 1945



Another view of the edge of the  
shoals ... Everything below the  
main white line of breakers is  
open sea ... Those breakers may  
seem small, but they are about  
30 ft. high!!! Two very small  
islands can be made out in the  
middle of the picture ... Their names  
are Whale and Skate island ...



F.F.S.

EAST ISLAND - 1945

(WEST SIDE OF IS.)

OUR "OUTHOUSE", LOCATED  
OPPOSITE C.O.'S HUT.



—1945—

(Gooney Bird Island) East Is, Loran Sta.

LOOKING DUE EAST —

MESS HALL QUONSET HUT ON EXTREME RIGHT.  
WALK-IN DEEP FREEZE IN FRONT OF SHIRTLESS  
CREWMAN.

BOILER HOUSE (DISTILLATION HUT) IS THE 2-STORY  
AFFAIR WITH THE OPEN WINDOWS AROUND IT.

LARGE WATER TANK IN FRONT OF BOILER HUT,  
GRAVITY (SMALL) WATER TANK ON TOWER FOR  
PRESSURE OF 8#.

WEAPONS CARRIER VEHICLE + MYSELF + CREW  
WITH FISH.





1945

EAST ISLAND LORAN  
STATION, "OUTHOUSE!"

WEST SIDE OF ISLAND,  
OPPOSITE OFFICER'S HUT.



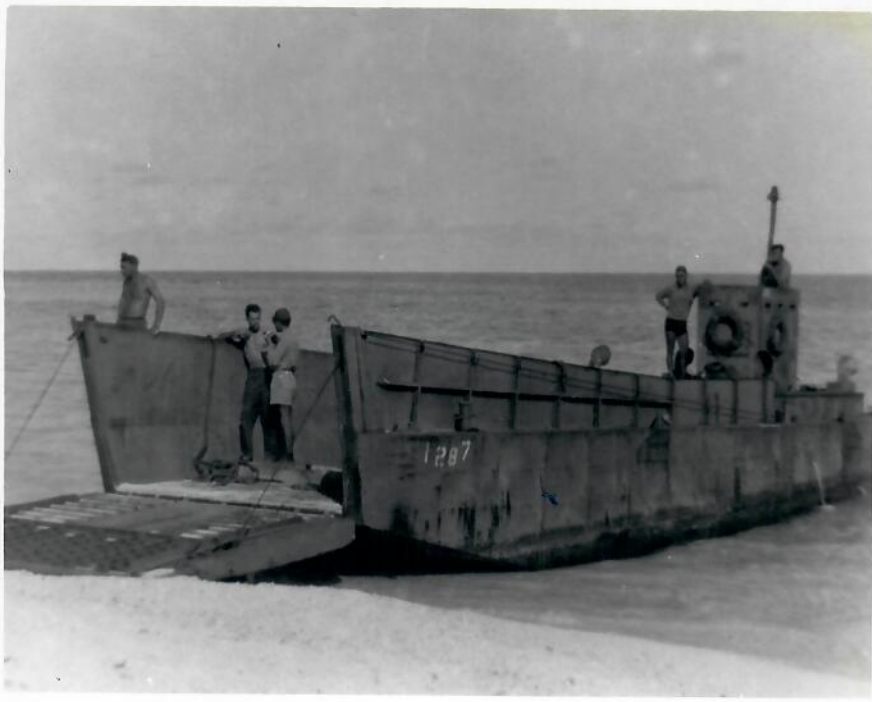
EAST ISLAND - FRENCH FRIGATE SHOALS  
1945

(LOOKING TOWARDS THE EAST)

NESTING GOONEY BIRDS NEAR THE  
RADIO HUT, LATE IN THE AFTERNOON.

THE WATER BUCKET WAS PLACED BY  
THE WHITE G.B. TO PREVENT IT FROM  
BEING RUN OVER BY OUR VEHICLE,  
(WEAPONS CARRIER)... ALSO A COVERED 20MM  
GUN & AMMO. BOX IN BACKGROUND.

Samuel Finch



GOONEY BIRD IS., (French Frigate Shoals)  
1945

OUR LCM UP ON THE BEACH AFTER  
UNLOADING SUPPLIES. OUR C.O. IS  
J. J. RASHTI IN THE KAKI-SHORTS.

(LOOKING TOWARDS No.)



LEAVING "TERN ISLAND," ABOUT  
2 MILES OUT... WE ARE HEADING  
FOR EAST ISLAND, AND RIGHT  
ABOUT WHERE THE LCM IS NOW  
WE MAKE THE TURN IN OUR  
NAVIGATIONAL COURSE TO MISS  
REEFS.

THIS PHOTO TAKEN IN 1945...





PHOTO TAKEN IN 1945

AT (GOONEY BIRD IS.)

(LOOKING TOWARDS E/NE)

This Shark was caught in the late  
afternoon right off the small pair  
that is seen here in the foreground.  
Myself in the picture — 24 years old.

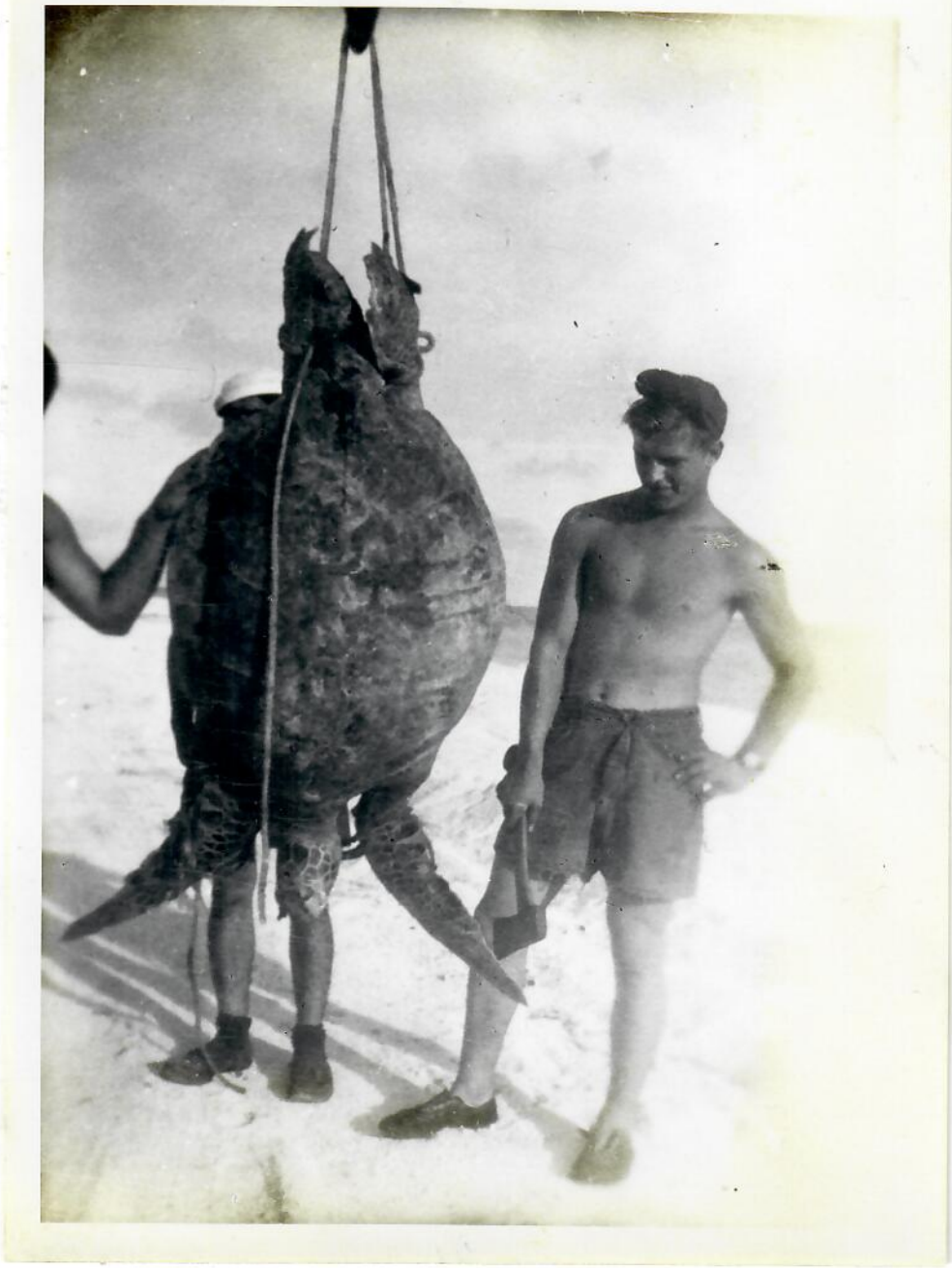
Sumner Finch



AUG. 1985

ME AND A GRAY SHARK  
AT THE FOOT OF THE PIER.

NOTE THE POSITION OF REEF  
& IT'S LOCATION TO THE PIER.



TEAM IS.

GEORGE H. BALAZS

1950s