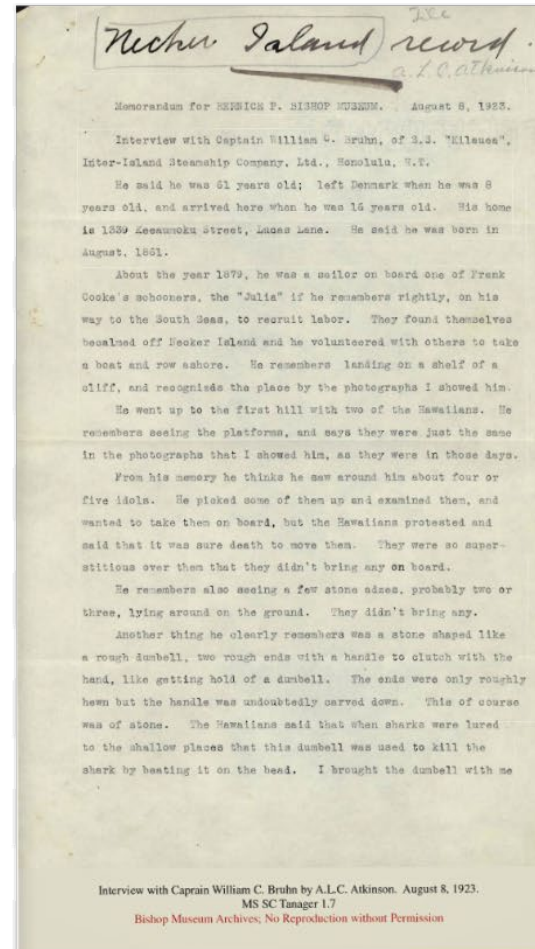


# Kai Akea > Mokumanamana Ki'i Pōhaku > Interview with Captain Bruhn of the S.S. Kilauea



and left it in San Francisco with a family named Weisenfeld, who was chief engineer of Wieland's Brewery, who lived near the corner of 28th and Dolores, in the Mission. He gave it to one of the daughters, Kate, he believes was her name.

Before she became Queen, Liliuokalani went to Becker in the "Maile," I believe, I was aboard. Charlie Williams' wife went so he had better be seen. There were so many sharks and the landing was so bad that Liliuokalani didn't go ashore. The purpose of visiting the Island was to get feathers from the sea'n birds for Kahlia.

*A.L.C. Atkinson*

A 1923 interview with Captain Bruhn of the S.S. Kilauea by A.L.C. Atkinson regarding Mokumanamana ca. 1879.

**Call Number:** MS SC Tanager 1.7

**Location:** Bishop Museum Archives