

LIBRARY OF
GEORGE H. BALAZS

obtained 3/11/80

Living on Midway



The Navy's Most Beautiful Isle

ALL ABOUT MIDWAY

About 3,000 miles west of San Francisco and some 1,150 miles northwest of Honolulu, lie the reef-encircled islands known as Midway. The larger of the two islands is "Sand," which is the main island, and the smaller is "Eastern."

Midway Islands first became the property of the United States when Navy Captain N. C. Brooks recorded their discovery in 1859. In 1903, the Pacific Cable Company's first contingent arrived using Midway Island as a base of operations for laying the Pacific Cable.

In 1904, a garrison of Marines was stationed at Midway Island and in July 1908, Midway served as a relay station for the first transcontinental cable message. In 1935, Pan American Airways established facilities on the island for refueling and passenger rest in linking by air the United States with the Far East.

The U. S. Navy began building an Air Station on Eastern Island in 1940 and a Marine garrison of 850 men was moved to the island. The Air Station was completed in August, 1941, and attacked on December 7, 1941, by the Japanese on their return from bombing Pearl Harbor. Marine Lieutenant George Cannon, the first World War II Medal of Honor recipient, was killed in the defense of Midway. The Department of Defense school on Midway is named in his honor.

The Battle of Midway (3-5 June 1942) was the turning point of World War II. This stunning defeat of Japanese forces in the vicinity of Midway Island gave the United States Navy control of the Pacific.

In July 1958, a forty million dollar construction project was completed to support the Airborne Early Warning Line barrier in the Pacific. Barrier Forces were phased out on June 30, 1965.

Midway Island today is considered one of the U. S. Navy's vital outposts. The Naval Station maintains and operates facilities which provide services and material support to U. S. naval aviation and fleet activities.

Geographically, Midway is appropriately named. Not only does the Island lie near the middle of the Pacific, but it is also nearly halfway around the world from Greenwich, England. The International Dateline lies just 140 miles to the west of Midway.

Summer temperatures (July, August, and September) range from an average high of 82° to an average low of 75°. Winter temperatures (January, February, and March) are more brisk, ranging from an average high of 69° to an average low of 62°. The highest recorded temperature at Midway was 89° in September 1966, while the low was 52° in January 1965 and again in March 1968.

Summer, warm and humid, prevails from July to October and clothing consisting of light fabrics is the recommended attire for both men and women, while during the winter, sweaters and light jackets are comfortable when the winds turn chilly. Frontal systems transit the Midway area during the winter months, bringing large quantities of rain making a raincoat a must.

The vegetation on Midway is made up of a generous variety of trees, shrubs, flowers, and grass, surprising most people upon their initial arrival. Perhaps the salient feature of life on Midway is the Gooney Bird, properly called the Laysan Albatross, which inhabits the Island from October through July. Other sea bird species include the frigate Bird, the Fairy Tern, and Bosun Bird along with many others. The birdlife on Midway is protected by law as the islands are classified a National Wildlife Reserve, and as such, falls under federal statutes as set forth by the Department of Interior.

LEONARD KISSLER

The mission of the Naval Air Facility Midway Island is to maintain and operate facilities and personnel to support operations of the Navy's aircraft carrier battle groups.



WELCOME TO NAVAL AIR FACILITY (NAF) MIDWAY ISLAND

This booklet has been prepared by the Public Affairs Office of Midway Island in an effort to help acquaint you with the island and all it has to offer you. Please note that any mention of rates, schedules, charges and times is based solely on existing information at the time of publication, and is subject to change without notice.

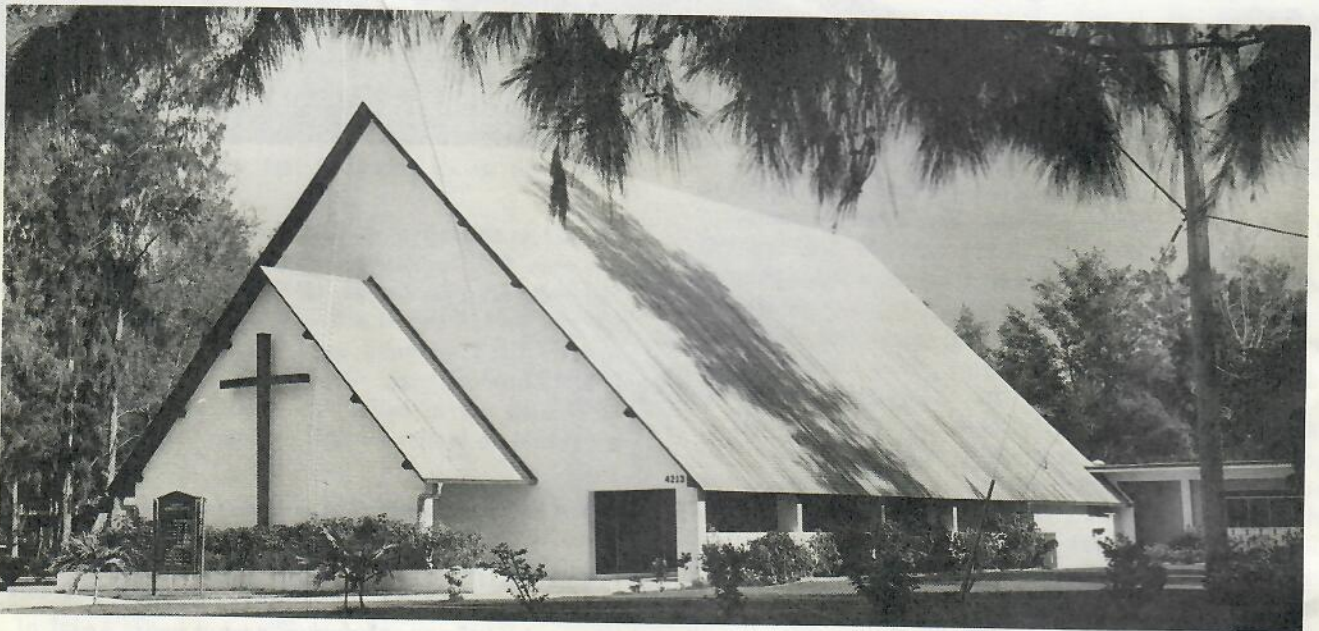
COMMAND MISSION

The mission of the Naval Air Facility, Midway Island is to "... maintain and operate facilities and provide services and material to support operations of aviation activities and units of the operating forces of the Navy and other activities and units, as designated by the Chief of Naval Operations". It may all be summed up by simply saying, "We support the Fleet".

OMBUDSMEN

An ombudsman is any person or office to which you have direct access without having to go through the chain of command. The personnel staffing these offices may request that you first take the request through the chain of command, but if that should fail, they will take it from there and can get some very good results. All ombudsmen have direct access to the Executive Officer and/or the Commanding Officer. Your base ombudsmen include:

Chaplains-The Protestant Chaplain is permanently assigned to NAF Midway and the Catholic Chaplain is on the island for about ten days each month TAD from Barbers Point.



MIDWAY MEMORIAL CHAPEL

A Protestant Chaplain is stationed on Midway, with periodic visits being made by a Catholic Chaplain from Barbers Point. Jewish worship services and Latter Day Saints religious practices are scheduled as Layman interest allows. The Chaplains also serve as local representatives of the Navy Relief Society and the American Red Cross.

A beautiful chapel affords a multitude of chapel-sponsored activities besides regular Mass and Divine Worship. Included are choir groups, CCD instructions, Bible Study groups, and Coffee Fellowships following Sunday Morning Services.

WATCHES

Officers and Chiefs stand watch as the Officer of the Day (OOD). E-5 and E-6 are assigned as the Junior Officer of the Day (JOOD). E-4 and below are assigned as Messenger of the Watch (MOW) or to the Colors Detail. E-4 and below in the Construction Ratings are assigned as Duty Drivers.

SPECIAL SERVICES ACTIVITIES

Many of the Special Services activities on base are available at little or no cost to you. Where applicable, the price for the use of the service or facility has been included.

BASE THEATER: The price is 75¢ per person per movie. The hours of operation are posted at the door. The movie schedule is published weekly in the base paper.

PICNIC AREAS: There is no charge for the use of the various picnic areas but a reservation is required in order to prevent conflicts.

BEACHES: There is no charge for the use of the beaches. There are a few regulations that apply for the use of the beaches. There are no lifeguards assigned to the beach therefore, the use of the buddy system is a must. Due to the danger of sharks, swimming after sunset is prohibited. Finally, because of the possibility of injury, no glass containers or glasses are allowed on the beach.

All of the beaches may be walked at night with the exception of the Area "7" beach which is part of a restricted area.

MIDWAY'S BEACHES are considered some of the best in the world. Shallow sandy bottoms and white, crushed coral beaches make swimming and sun-bathing ideal. The waters inside the reef are crystal clear and contain langousta and other species of sea life for the skin-diver to observe or catch.



CS/C-The Command Senior Chief is the senior enlisted person on the base and is the advisor for all enlisted personnel.

CAAC-The staff of the Counseling and Assistance Center can lend assistance in dealing with a variety of problems including alcohol and drug abuse.

Policy/Decision Making Boards-Boards of all types have been established at NAF Midway to let your voice and opinion be heard. Here is a listing of some of these boards:

Menu Planning Board
Bachelor Quarters Advisory Board
Acey-Deucy Advisory Board
Consolidated Club Advisory Board
EM Club Advisory Board
Human Relations Council
Enlisted Recreation Committee
Composite Recreation Committee

AMERICAN RED CROSS AND NAVY RELIEF

At some other Naval installations these offices might have been staffed by civilian or wives' club volunteers. On Midway, the offices are run as an integral part of the activities of the Chaplain's office. The services of these offices are handled directly, and there is no need to go through the chain of command for their assistance.

Each year at Midway Island, numerous persons receive Red Cross messages which contain bad news from home. Generally the first step towards an emergency leave situation begins with the receipt of that message. Isn't it important that whoever you left behind know how to get in touch with you in an emergency?

In the event of transmitting news of a death or serious illness requiring your presence, ensure that your dependents send the message via the Red Cross. There is no charge for this service and the Red Cross message will speed up the process of getting you home.

INSPECTIONS

Command Inspections are conducted quarterly. Announcements concerning any upcoming inspection are published in the Plan of the Day about one week to ten days in advance.

Due to delays associated with the processing of uniforms at the laundry, it is advisable that you have the seasonal inspection uniform in an inspection ready condition at all times. The seasonal uniform for summer months is tropical white long for males and service dress light blue for females. In the winter months, the uniform for inspection is service dress blue for all hands. Summer Blue (Salt and Pepper) is not an inspection uniform at NAF Midway Island.

GYMNASIUM: There is no charge for the use of this facility. In addition to the standard basketball court, the gym also contains the equipment check-out center, sauna and racquetball courts. The saunas are not monitored and the use of the buddy system is required (Persons with previously undiagnosed respiratory ailments could lose consciousness in the sauna).

CONSOLIDATED GEAR ISSUE: This facility is located at the gymnasium and has a variety of items available for check-out on a weekly/daily basis.

HOBBY SHOP: The hobby shop is the newest and best of the Special Services activities and incorporates 3 main service areas.

Woodshop-Has all the standard woodworking tools as well as a good supply of lumber, fasteners, hardware and other consumable items. Most of the time, speciality woods such as koa, monkeypod, teak, rosewood and walnut are stocked. The woodshop attendant will help with technical pointers and advice as time permits. A qualification procedures is necessary to be authorized use of the equipment and is purely for safety reasons.

Resale Store-The resale store carries a full line of the most popular hobby and craft materials.

Ceramic Shop-A full line of ceramic supplies and materials are available for your use. Small charges are made for the firing and glazing of your projects. Local regulations require that you attend a pouring class prior to use of the molds on your own.



CERAMIC SHOP—one of many hobby shops operated by Special Services.

DEEP SEA CHARTER FISHING: The waters surrounding Midway offer some of the finest fishing to be found anywhere. Game fish of all sorts abound. There are several charter fishing boats available and further information and reservations may be obtained from Special Services. ***SPECIAL NOTICE*** Only fish caught outside the reef are considered safe for human consumption. Others generally contain Cigautera Toxin which is fatal to humans. There is no known antidote for Cigautera Toxin.

RECREATIONAL BOATING: This is without question, the most popular of all the services offered on the island. There is quite a fleet of small craft that are available for check-out. Boats available include Boston Whalers, Lazer sailboats and two ski boats.

BALLFIELDS: There are two ballfields on Midway, the Harbor field used for practice games and Hartley Field which is used for Captain's Cup competition.

BOWLING ALLEY: The twelve lane bowling alley has recently been refurbished. There is a 50¢ line charge per game and shoes are available for rent. There is a pro shop available and stocks a full line of bowling supplies and also offers special ordering service. The bowling alley also offers custom ordering and drilling for balls.

GOLF COURSE: There is a nine hole golf course available on Midway and the green fees are \$1.50 for nine holes or they have a greens fee for the entire month. The greens and fairways are not in the best condition but between that and the birds, it makes the course very challenging. Golf clubs and carts are available for rent or purchase from the golf pro shop.

TENNIS COURTS: There is no charge for the use of the tennis courts. There are four courts on the island ranging in condition from good to poor. All the courts are lighted at night for your use, please remember to turn the lights off when you are finished.

MINIATURE GOLF COURSE: There is a 25¢ charge per game for this facility and that is paid at the golf pro shop.

WEIGHT ROOM: There is no charge for the use of this facility which is located in the gymnasium. The weight room is completely equipped with weight lifting and body building equipment.

SCUBA DIVING AND INSTRUCTION: Instruction in SCUBA diving is provided by the local diving club, the Koral Kings. Although not considered a Special Services activity, the Koral Kings offer the only instruction and certification in SCUBA for the waters of Midway Island. In addition to this instruction in SCUBA, they also conduct classes in snorkeling and underwater safety.

EASTERN ISLAND TRIPS

Appropriately named, the island which lies just to the east of us here on Sand Island is the islet known as Eastern Island. Most of the Battle of Midway was fought from that island and NOT from Sand Island as is more commonly thought. There are also several varieties of birds which nest only on Eastern that are worth the trip.

You can reach Eastern by taking any of the Special Services boats over and tying up at the pier. Please don't tie up to the windward side of the pier as this will cause damage to the boats. Also, tying up to the ladderway at the pier obstructs it from use by others.

COMMUNICATION OFF THE ISLAND

Midway Island is one of the way stations for the Trans-Pacifc cable and as such has access to the cable for long distance calls back to the States. These calls are not free. Calls placed using the cable must either be made using a credit card from the Hawaii Telephone Company or by placing the call collect.

CLASS ECHO MESSAGES

A class "E" message is a night telegram that is sent via Navy teletype circuits back to the States for retransmission by Western Union. The only portion of the telegram that is charged is from the Naval Communications Station at Stockton, California to the destination. The portion from the Message Center, Midway to Stockton is free.

The class "E" message system also works in the other direction in that you can receive messages from the States through Stockton. Your address for this is:

YOUR RATE AND FULL NAME
DEPARTMENT/DIVISION
U. S. NAVAL AIR FACILITY, MIDWAY ISLAND
VIA: NAVAL COMMUNICATIONS STATION
STOCKTON, CALIFORNIA
"CLASS ECHO"

CMO FACILITIES

On Midway Island, all the clubs and messes come under the administration of the Consolidated Mess (Open) - CMO . Included among these are;

Consolidated Club -- This is the service club for senior enlisted personnel, E-7 and above and all officer personnel. Facilities include a bar with complete lounge area, a movie theater and meeting rooms.

Acey-Deucy Club -- This is the service club for enlisted personnel in pay grades E-5 and E-6. The club is located in the Enlisted service clubs area behind the Ships Store and features a bar and lounge with TV.

Enlisted Men's Club -- This is the service club for enlisted personnel in pay grades E-4 and below. It is located in the clubs area behind the Ships Store and features a bar and lounge, with special buffets Sundays. A TV viewing area is offered in addition to pool tables and dart-throwing area. Each month a live USO-sponsored show brings live entertainment to Midway, which is offered in the EM Club. A large sound system provides disc-jockey dance music.

Ironwood Inn -- This is a steak and lobster house which is located behind the Ships Store and is an excellent place for that special occasion.

Consolidated Package Store -- The CPS is located behind the Ships Store and is open to any authorized patron. Local regulations require patrons be 18 years of age or older or serving in pay grade E-5 or above. A full selection of good wines and other beverages is maintained. There are provisions for either stocking your favorite or obtaining it by special order.

SHIPS STORE FACILITIES

The Ships Store here at Midway Island is quite small and therefore cannot stock all merchandise. There are provisions for special ordering those items that are not stocked and the Navy Exchange and AAFES Catalogs can prove to be lifesavers. If you don't see what you want, just ask, it may be in the warehouse. Sears and Penney sales catalog also occasionally find their way onto the island and can be very useful for procuring those items not carried in the Ships Store, NEX or AAFES Catalogs.

The Ships Store carries a very limited supply of uniform articles so all needed uniforms should be brought with you when you arrive.

POST OFFICE

Our post office offers all the services that are generally offered at a full sized post office in the States. Mail is received three times a week via the MAC Logistics flight and is distributed as soon as possible.

CREDIT UNION

Although there is no credit union at Midway, all personnel are authorized to use the services offered by the Navy Federal Credit Union in Washington. Deposits may be made in much the same way as you would using the "bank-by-mail" feature of your home bank or you may choose the allotment method. Under the allotment method, a predetermined amount is deducted from your paycheck and forwarded to Navy Federal. Navy Federal offers service on a world-wide basis and has many overseas branches, the nearest office is in Honolulu.

There are several features that make Navy Federal worthwhile. They have signature loans of up to \$2,500 which can be requested over the phone if need should dictate and then the money can be wired to Honolulu for pick up on your way through (as in an emergency leave situation). Once you become a member of the Navy Federal Credit Union, you retain that membership for as long as you maintain an account there. This rule applies even after you get out of the service.

This is not an advertisement or endorsement for the Navy Federal Credit Union but is considered to be information that may be of interest to those personnel reporting to the Island. For further information, contact NFCU, Washington, D. C. 20391, and request credit application and membership forms.

MEDICAL AND DENTAL FACILITIES

Midway Island has one permanently assigned dentist and one doctor on a TAD basis from Hawaii. Routine medical and dental care is provided on an out-patient basis. Sick call for medical is 0730-0800 and for dental is 0700-0730. Appointments are made for other times.

Severe medical or dental problems or those involving a specialist are referred to Tripler Army Medical Center in Honolulu. Emergency medical air-evacuation is coordinated through the 22AF and 61st Wing Command Post located at Hickam AFB, Hawaii, utilizing C-141 or other airborne aircraft.

CHAMPUS information is also available through the Branch Hospital .

LEGAL SERVICES

Legal services are provided by the Legal Office on an appointment preferred basis. The Legal Office can assist all military personnel with legal problems or questions. The Legal Office is not permanently staffed by a lawyer (we get one TAD occasionally) and this should be taken into account when planning your departure from home.

DRUG EXEMPTION PROGRAM

The Navy has long recognized the severe problem with drugs among its people. For that reason the Navy offers a program to help you get off of drugs without a big hassle. This system may be used only once and must be used before you face the possibility of disciplinary action. If you turn yourself in, and meet the above criteria, you are GUARANTEED that there will be no disciplinary action taken against you.

Introduction of drugs onto the Midway Islands is a very serious offense. Many people think that possession of marijuana is no longer a felony offense, nothing could be further from the truth. On board a Federal reservation, it is a FELONY.

PERSONAL PROPERTY SERVICES

Any Household Effects that you may have forwarded to Midway will be arriving via the MAC Logistics flight and in some instances may arrive before you do. The contact point for inbound shipments is Supply, which is located on the first deck of the hangar. If there was any damage to your effects, these same people will assist you in filing the necessary paperwork.

STATION LIBRARY

The station library has an excellent selection of books for your reading pleasure. In addition to this, they also carry over fifty current magazines and several daily newspapers. The library is also a very good source on any information on Midway that you may be seeking.

The station library offers recording facilities for tape and a series of listening booths for those interested in the many records stocked there.

They also offer a complete series of "Welcome Aboard" packets from the many Naval facilities around the world. This information can be very helpful when planning for your next duty station. Just ask the librarian for their location.

TELEPHONES

The Naval Air Facility has its own telephone system which is independent of the system belonging to Hawaii Telephone. Use of the Trans-Pacific cable is via commercial circuits. Personnel residing in the Bachelor Quarters are only allowed official phone service if required by their respective department. Commercial calls can be made collect or via credit card.

VEHICLES

All motor vehicles on Island are government vehicles and as such require a government operator's permit. If you already have a government driver's license, it still must be validated for Midway.

The speed limits on Midway are very low and are rigidly enforced!

LEAVE POLICY

The Environmental and Morale Leave (E&ML) program is in existence here on Midway. The program entitles everyone stationed aboard the Facility five days E&ML in Honolulu per quarter. Ordinary or annual leave is also authorized for those stationed here and is encouraged.

The MAC Logistics flights offer the only transportation on and off of the island and operates on a thrice weekly schedule at this time. If you are going on leave or E&ML just drop down to the terminal the day before you want to leave and sign up. The rules concerning Space Available transportation will be explained to you before your departure from Midway for those that are utilizing this service for the first time.

WATER SYSTEMS

On Midway Island, we have two separate water systems. One is used for cooking and drinking only and the other is used for all other reasons. Water for cooking and drinking is collected from rain water whereas the other system is fed from wells located underneath the island. During the winter months when the weather is quite rainy the brackish system nearly approaches the quality of the fresh, but in the dry, summer months the quality begins to deteriorate in the brackish system due to increased salt.

TSUNAMIS

TSUNAMI-a great sea wave produced by submarine earth movement or volcanic eruption.

In the Pacific area we sometimes are put on "alert". Midway Island has been constructed by nature in a very fortunate manner. In order for the tidal wave to build into a huge wave of water, it needs a shallow area to build up in. There is no such area around Midway. The area just three miles off of the reef is over 18,000 feet deep. The worst recorded tsunami to ever hit Midway was in 1964 and caused only localized flooding.

BICYCLE REGISTRATION

All bicycles on the island MUST be registered with Security. Unregistered bicycles are impounded for your own safety. When registering your bicycle bring either a bill of sale or some other proof of ownership. Do not purchase a bicycle on the island until you are sure that it was not stolen.

A frequent occurrence on island is bicycle theft. Lock your bike!!

RADIO AND TELEVISION

Radio and television entertainment for the island are provided by a Naval Broadcasting Service Detachment. The majority of their programming is provided by the American Forces Radio and Television Service (AFRTS) from Los Angeles.

The television station signs on at 1700 during the week and at 1100 on the weekends. The local station has very little control over their scheduled programming, the network shows seen on KMTH-TV are donated by the artists that perform in them. KMTH-TV broadcasts on channel 4.

KMTH-AM Radio broadcasts from 0600-2400 daily and presents a mix of Top-40, Country and Western and prerecorded shows sent from AFRTS. KMTH-AM is constantly looking for volunteers for help in its nightly programming.

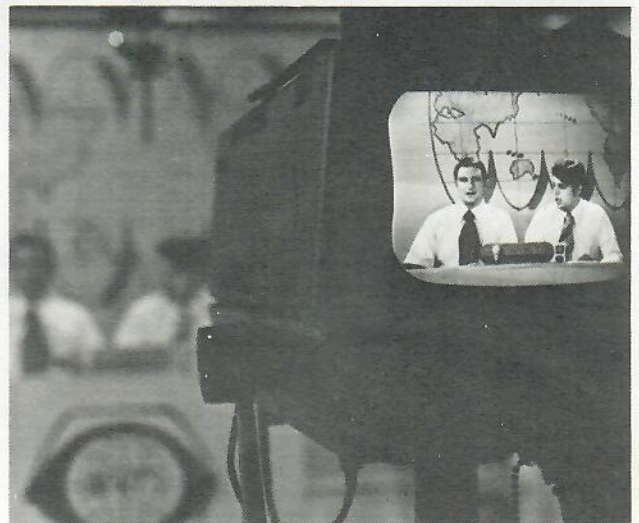
KMTH-FM Radio broadcasts a steady format of "easy listening" and is on 24 hours per day.

KMTH RADIO AND TELEVISION

KMTH Radio and Television is part of the American Forces Radio and Television Service presenting the latest in music and television programming from the States.

News, sports and community notes are presented throughout the day by the station's own broadcasters and a number of volunteer workers. While regular radio programming may be a few weeks in delay, television presentations may be as much as six months behind. However, sports and national news programs are received within a three-week period.

KMTH presently broadcasts over AM radio and black and white television. Plans call for an FM radio station and color television within the next year.



RESTRICTED AREAS

There is very little of the island that is not restricted in one way or another. The location of these areas should be learned immediately.

The following areas are "OFF LIMITS"

Fuel Pier	Cargo Pier (When conducting operations)
Antenna Fields	All Towers
Closed or Unoccupied Buildings	Underground Bunkers
Communication Center	Naval Facility
Pacific Missile Range Facility	Dump Areas
Pacific Telecommunication Property	Area "7"
Area "7" Beach (after sunset)	Crash and Fire Training area
Runways, taxiways and anything associated with air traffic.	

If ever you should doubt whether an area is restricted or not, assume that it is.

NEVER CROSS RUNWAYS TO GET TO THE SOUTH SIDE OF THE ISLAND. USE THE SERVICE ROAD SOUTH OF THE POWER PLANT AND CROSS AT THE CROSSING LIGHT.



NAVAL FACILITY—The largest tenant command supported by the Naval Station.

NAVAL FACILITY

The Naval Facility (NAVFAC) is Midway Island's newest and largest tenant activity. Commissioned 13 January 1969 and manned by approximately 100 officers and men, the facility is designated the responsibility of providing the Navy with extensive information on oceanographic conditions in the area.

NAVFAC Midway has quickly proven its capability and professionalism by being awarded three Meritorious Unit Commendations for service during 1969, 1970, and 1971. The Facility has also received the Oceanographic Systems, Pacific, Efficiency Award for Fiscal Year 1971.

PACIFIC MISSILE RANGE FACILITY

The Pacific Missile Range Facility (PMRF), located near the southwestern end of the island, is operated by Dynalelectron Corp., Pacific Instrument Division. Operating in conjunction with similar facilities located at Kaneohe, Hawaii, and Wake Island, the unit locates impact points of missiles and data capsules which fall within the range area. In addition, the facility participates in locating downed aircraft and in oceanographic research, particularly in the study of tsunami (tidal wave) generation.



NAVAL WEATHER SERVICE ENVIRONMENTAL DETACHMENT

The detachment's forecasters provide en route weather forecasts and oceanographic data to transiting ships and aircraft as well as providing the island population with weather forecasts and advisories.

Midway Island is a World Meteorological Organization Upper Air Observation station and the Upper Air Section takes two radiosondes daily transmitting upper level winds and temperatures to worldwide users who utilize the data in current analysis as well as for research purposes.

FISH BALLS

Combing the beach for the famous Japanese glass floats is another recreational activity enjoyed by many stationed on Midway. The "fish ball" is considered one of the most prized possessions that wash ashore on the Pacific Islands.

The beautiful floats are carried by the Kuroshio Current from Japan after breaking loose from fishing nets, through the northern Pacific, along the west coast of the United States and south of the Hawaiian Isles where they are picked up by other ocean currents or blown off course by strong winds and deposited on the beaches of the lesser Hawaiian Islands, including Midway.

They have fascinating colors and markings and are sought by the professional as well as the amateur beachcomber.

THINGS TO DO IN HAWAII WHILE ON LEAVE

During your tour of duty here on Midway you will have the opportunity to travel to the Hawaiian Islands on the logistics flight. Space available transportation is available to other Pacific areas once you reach Hickam Air Force Base.

The State of Hawaii is an island state comprised of five main islands which you can visit. The primary islands in the Hawaiian chain are Oahu, Kauai, Maui, Molokai and of course Hawaii.

Oahu is appropriately named, in Hawaiian it means "the gathering place". It is the seat of government for the state and is the political and economic center of the islands. Since its introduction by Hawaiian kings, surfing has been perfected and perpetuated along the many fine beaches around this island. Most of the lodging, entertainment, shopping and other recreational pursuits sought by Midway Islanders are located on this island. One of the largest shopping complexes in the world, Ala Moana, is located near Waikiki, on Oahu.

Kauai is called the "Garden Island" because of its lush scenery. Contained on this island is one of the most scenic spots in the islands, the Waimea Canyon. It is often called the Grand Canyon of the Pacific.

Maui is the second largest of the islands and bears the name "Valley Isle". It is dominated by Haleakala, a dormant volcano. Haleakala, with its 10,023 foot height, offers an outstanding observation point from its peak. From this point you can see several other islands on a clear day. In west Maui are most of the sights to which people flock. Lahaina, a restored whaling village, with its quaint shops and stores is also located on the west side of Maui. The drive to the western side of the island is well worth the trip just for the scenery, but beware of the narrow roads.

Molokai is known as the "Friendly Island". It has very few lodging facilities and are usually booked months in advance. Air transportation to Molokai is plentiful and most of the island can be seen as a day trip from any other island. Molokai is best known for the leper colony founded by Father Damien. The colony is still active and may be visited by taking a mule train down into the valley to the east of the airport.

Hawaii, also known as the "Big Island", "Volcano Island", or "Orchid Island" is the largest of the Hawaiian Islands. The island offers sport fishing on the Kona Coast, scenic beaches, hunting, hiking, camping and picnicing. The summit of Mauna Kea offers the only snow skiing to be found in the Islands. The Hawaii Volcanoes National Park has daily tours and is one of the few places in the world where you can get close to an ACTIVE volcano.

MILITARY LODGING

On Oahu are two of the most popular of all the military lodging activities in the Hawaiian Islands. Here you will find the Hale Koa Hotel, which replaced the old Fort DeRussey and the Barber's Point beach cottages.

The Hale Koa's rates are based on the location of the room and the number of occupants. Advance booking is required along with a deposit. Hale Koa is right down on Waikiki near all the night clubs and night life.

The Barber's Point beach cottages offer kitchen facilities, but most of all they offer solitude for that special reunion. The maximum stay is seven days and reservations may be obtained through Barber's Point Special Services.

On the Big Island, Hawaii, is the Kilauea Military Camp (KMC). KMC is the only military lodging facility located within the confines of a National Park and is located just one quarter mile from the edge of Kilauea Crater. KMC offers one of the best bargains around in that the price includes all your meals, tours and transportation.

Further information on any of these locations can be obtained by contacting Special Services.

Due to fluctuating rates, no information of that type has been included.

COMFOURTEEN DISCOUNT BOOKS

Without question, the best deal going is the COM14 Special Services Discount Book. This book is available at Pearl Harbor and contains discount coupons for nearly all the sightseeing activities in and around Honolulu, all the good restaurants, plus coupons for cars, tourist items and so forth.

Do yourself a favor and drop by Special Services at Pearl Harbor for more information.

THE UNIVERSITY OF MARYLAND AT MIDWAY ISLAND

THAT'S RIGHT---THE UNIVERSITY OF MARYLAND IS COMING TO MIDWAY ISLAND

Yes...the University of Maryland, the University that started it all in 1949 in Europe and in 1956 in Asia with regard to overseas education and the military, is coming to Midway Island.

WHAT DOES THIS MEAN?

It means that regular university courses...not correspondence courses or video courses...but real university courses with real university teachers will be offered at Midway Island.

YOU MEAN THAT THE UNIVERSITY OF MARYLAND IS ABLE TO OFFER CLASSES AT AN INSTALLATION AS ISOLATED AS MIDWAY ISLAND?

The European Division began overseas classes with the military in Germany in 1949, and the Far East Division began offering classes in 1956. Since then the University of Maryland has offered classes in military installations in such locations as Germany, Japan, Turkey, Iran, Morocco, Ethiopia, Libya, Pakistan, Viet Nam, Spain, Greenland, Bermuda, the Azores, Italy, Greece, Laos, Austria, Iceland, Norway, Korea, Ireland, Holland, Belgium, Taiwan, Saudi Arabia, Australia, and Thailand. Thus coming to Midway Island is just a logical extension of the University of Maryland's desire to offer university classes wherever U.S. servicemen and servicewomen are stationed around the world.

HOW WILL THE UNIVERSITY OF MARYLAND COME TO MIDWAY ISLAND?

University of Maryland classes will be offered directly through the auspices of the Far East Division of the University of Maryland which maintains its administrative headquarters at Yokota Air Base in Tokyo.

NAVY CAMPUS FOR ACHIEVEMENT

WHAT IS NAVY CAMPUS FOR ACHIEVEMENT (NCFA)?

NCFA is a management system, designed to upgrade and coordinate all off-duty education in the Navy. It provides Navy personnel with voluntary off-duty educational opportunities to serve their career and personal needs.

NCFA is the education available at many levels under its umbrella: high school completion, vocational/technical certificates, associate degrees, baccalaureate degrees, masters degrees and doctoral degrees. At each location where there is an NCFA office, you will find information about many programs available to you, no matter what your needs and goals in education may be.

NCFA is the NCFA Education Specialist network. The NCFA Education Specialist is professionally qualified to assist you in any area of personal educational growth. He or she is familiar with all phases of the Navy off-duty education programs.

NCFA is the institutions who participate in the Contract for Degree program. These institutions have agreed to eliminate residency requirements for certificates or degrees. They will allow up to 75% of certificate or degree requirements to be completed through non-traditional methods such as evaluation of military schools, correspondence courses and challenge exams. They provide a list of courses required to complete the degree and allow up to ten years to complete the degree requirements.

THE NCFA MANAGEMENT SYSTEM

The NCFA Management System covers all voluntary off-duty education programs available on station or aboard ship, including but not limited to the following:

1. On Base Education Programs. At almost all Navy bases, local colleges and universities have brought their programs on base to make college courses more readily available to Navy personnel. Most classes are held in the evening after normal working hours. The NCFA Office can direct you to the college office and provide information on classes available each semester or term. These programs include courses offered to meet requirements for the following degrees:

Associate/Certificate	Masters
Baccalaureate	Doctoral
2. PACE - Program for Afloat College Education. PACE is the program which provides college courses aboard ship for personnel assigned to a ship either as regular ship's company or as a member of an air unit assigned to the ship during deployment. The Navy contracts with various accredited schools to provide this service, so that courses are virtually free to you.
3. Instructor Hire. This program permits the Navy to pay (up to \$500) for an instructor to teach just about anything that is not for academic credit. There must be at least 10 military personnel enrolled in each course; civilians and dependents can also attend on a space-available basis.
4. DANTES - Defense Activity for Non-Traditional Education Support. This program has replaced the USAFI program which was disestablished in 1974. Under DANTEs, CLEP exams are available to you through the NCFA Education Specialist, as well as correspondence courses from accredited colleges and universities as listed in the DANTEs Independent Study Catalog. Also available through DANTEs are the SAT, ACT and PEP entrance exams.
5. CLEP - College Level Examination Program. The CLEP General Examination consists of five tests, each an hour in length. These exams cover general education material normally learned in the first year of college. Each test successfully completed may earn 3 to 6 credits at most colleges. In addition, there are about 40 Subject Examinations you can take, which may earn 3 credits each.

6. High School Completion Program. One of the major educational goals of the Navy is that all Navy personnel have a minimum of a high school education. High school completion programs are available at most adult high schools conducted by local public school systems. These programs are conducted in the evenings and are usually free. In addition, the GED Testing Program conducted by selected local public schools in the US and designated overseas areas is available for persons interested in obtaining a high school equivalency certificate from their home state. Some major naval installations, in cooperation with schools, conduct high school programs on base. For further information, consult with your NCFAs Education Specialist or your Education Services Officer.

7. Financial Assistance. If you are on active duty, there are two ways to help pay your tuition.

a. Navy Tuition Aid. Under this program, the Navy will pay up to 75% of the tuition costs and you pay the rest. Your NCFAs Education Specialist or ESO can provide you with application forms.

b. Veterans Administration (GI Bill). For persons serving on active duty between 31 January 1955 and 31 December 1976, the VA will pay the full cost of tuition for college courses attended and 90% for correspondence courses. Those persons entering service after 1 January 1977 will receive benefits only after contributing \$50 to \$75 a month (to be matched by the VA \$2 for each \$1 up to a maximum of \$2700) for 12 consecutive months. Use of these benefits begins after the first discharge or 6 years of active duty after 1 Jan 77, whichever is less.

THE NCFAs CONTRACT FOR DEGREE PROGRAM

The NCFAs Contract for Degree program is designed to remove many of the barriers Navy personnel face in pursuing an education program while on active duty.

At present, eighteen colleges and universities are affiliated with the Navy in providing naval personnel certain advantages not previously available to them in the pursuit of their educational goals. All the NCFAs designated institutions agree to:

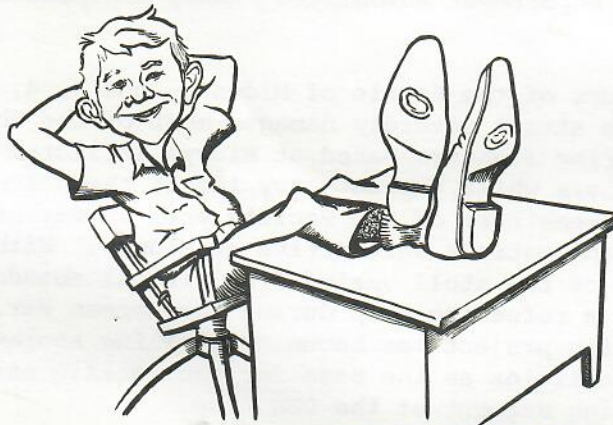
1. Eliminate residency requirements.
2. Allow up to 75% of degree/certificate requirements to be completed through non-traditional methods.

3. Allow liberal credit transfer.
4. Plan your degree program for you.
5. Advise you on what courses will be accepted from other accredited schools to meet your degree requirements.
6. Permit you 10 years to complete the degree requirements -- even if you are out of the service when requirements are completed.

This opportunity to enter into an agreement with one of the NCFA institutions is available to you, no matter where you are stationed, at sea or ashore.

AND SO - -

You can sit back and take what life throws your way -- or you can plan for a better future by taking advantage of the many education opportunities available to you.



SEE YOUR NCFA EDUCATION SPECIALIST



A SHORT HISTORY OF THE MIDWAY ISLANDS

Midway Island, first known as Middlebrook Island was discovered by Master N. C. Brooks of the Bark Gambia in 1859. The island was formally possessed by the United States in 1867, representing the first land mass annexed by the U. S. outside it's continental shores.

In 1903, the Pacific Cable Company's first contingent arrived, using Midway Island as a base of operations for laying the Pacific Cable. During their tenure on the tiny island they planted numerous Australian Ironwood trees that are still standing today. In July of the same year, the island served as a relay station for the first "round the world" cable message sent by President Theodore Roosevelt. A deep water channel was dredged for seagoing ships in March 1940 between Sand and Eastern Islands. Midway's airfield on Eastern Island was completed in early 1941 and a garrison of 850 Marines was moved to the island to improve its defenses.

On December 7, 1941, a token force of two Japanese cruisers and two destroyers shelled the island and were driven off by the defenders who scored direct hits on the invading force. Damage by the Japanese was confined to the hospital and seaplane hangar. Marine 1st LT. George C. Cannon, the first Marine in WWII to receive the Medal of Honor, was killed on the island while manning a gun position during this brief skirmish. The Navy Department authorized Midway's dependent school name in his honor.

During the first hours of the Battle of Midway, June 3, 4, and 5, 1942, the Japanese bombing attack severely damaged most of the above ground facilities. The Marine fighters based at Midway inflicted heavy losses on the Japanese bombers while taking heavy losses themselves. Rebuilding was rapid. For the remainder of the Pacific war, submarines, air squadrons and motor torpedo patrols were active at Midway. With the Armistice, utilization of the atoll varied from virtual abandonment to renewed importance as a refueling stop during the Korean War. In 1957, a \$40,000,000 building project was begun, signalling another buildup of Midway Island facilities as the base for the Pacific extension of the Airborne Early Warning segment of the DEW Line.

In July 1958, ships and aircraft forming the Early Warning Barrier began operating from Midway Island. The majority of building standing on Midway today were constructed during this period. The Barrier was disestablished in 1965 when more sophisticated detection devices were put into service.

In January 1969, the U. S. Naval Facility, Midway Island was commissioned, providing additional knowledge of oceanographic conditions.

The spotlight of the world was on Midway when President Richard Nixon of the United States and President Xuyen Van Thieu of South Vietnam met at the Naval Station on June 8, 1969, to discuss the withdrawal of American troops from South Vietnam.

Today, Midway Island is considered one of the Navy's vital bases in the Pacific Ocean. The Naval Air Facility, Midway Island (realigned on 1 October, 1978 from the existing Naval Station, Midway Island) maintains and operates facilities that provide services and material support to U. S. military aviation, fleet units, and friendly forces, as well as the round-the-clock assistance to vessels and aircraft within Midway' area of responsibility.

N. A. F. MIDWAY ISLAND

FISH & WILDLIFE REFUGE

NAF Midway Island is a Naval Fish and Wildlife refuge. The Fish and Wildlife found in the Navy's only fish and wildlife refuge are protected by International, Federal and Military Laws. The Migratory Bird Treaty Act, the Endangered Species Act, and the Marine Mammal Protection Act apply to all inhabitants and visitors to Midway Island. The following rules are to be obeyed while you are here.

Birds. Birds are not to be killed or molested in any way. Their nests and eggs are not to be disturbed and parts of the birds, including their feathers and eggs may not be collected.

Marine Mammals. All porpoises, whales and seals and their habitats are under the protection of the Marine Mammal Protection Act. Seals are not to be disturbed when found on the beaches or in the water. The Small Sand Spits located between Sand and Eastern Islands are off limits at all times. They are the pupping grounds used by the endangered Hawaiian Monk Seals. Even the slightest human intrusion could significantly disrupt important behavior patterns.

Turtles. All marine turtles are protected and must not be disturbed in any way.

Lobsters. Skin divers may take Spiny Lobsters and Slipper Lobsters for non-commercial use. The bag limit for either species is six (6) per diver per day. Spiny Lobsters must have a minimum carapace length of $3/4$ in. Slipper Lobster must weigh at least one pound. Egg carrying lobsters may not be taken from 1 May to 1 Sep. Spearing is prohibited from 1 May to 1 Sep for the protection of egg carrying lobster.

Fish. Because of the possibility that they may be carrying Ciguatera poison, all fish caught inside the reef should be considered unfit for human consumption. Fish not used for bait or bird feed should be returned to the sea unharmed. Fishing outside the reef with rod and reel is approved for Yellow-fin Tuna, Mahi-Mahi, Wahoo, and Marlin. These fish are suitable for human consumption.

A violation of any of these rules or any other Fish and Wildlife Regulations that applies to the Midway Island area or any species found here may result in a stiff fine and/or imprisonment. Violators who are merely visitors to the island will be restricted to their ships or their quarters for the duration of their visit or ordered from the island. Violations will be reported to the employers of civilian visitors, the Commanding Officer of transiting military personnel and to the U. S. Attorney General for the State of Hawaii.

THE LAYSAN ALBATROSS
DIOMEDEA IMMUTABILIS

While the "Gooney Bird" is sometime called Midway's native population, in all probability, people came first. A visitor in 1891 described the total absence of any birds other than stormy petrel and the redtailed tropicbird as most depressing. (No record as to the time of year of this visit which may have been in September or October when the Gooney is absent). When the Pacific Cable Company established their site on Sand Island in 1903 they observed only an occasional, apparently transiting Gooney. It took a combination of factors to bring a permanent Gooney colony. Planting of shrubs, clearing of scrub and the general improvements associated with construction projects, began to make an attractive island. A few Laysan Albatross had begun nesting on Midway by 1913. About the time the Cable Company imported several Australian Ironwood trees (*Casuarina equisetifolia*) to provide shade and shelter. That must have been the invitation the Albatross had been waiting for. By 1930 there were some 20,000 Laysan and 30,000 Blackfoot pairs nesting on the island.

Home of the Gooney is tiny Laysan Island some 320 miles east-southeast of Midway. The Laysan Albatross has invaded Midway to the extent that 35% of the world population now nests on Midway, and about 15% of the total population of Blackfooted Albatross are "Gooney Birds". Their habits are similar, the primary difference being color and the type site selected for nesting.

At one time Gooneys nested on Wake, Johnston, Marcus and in minor numbers at other islands in the Pacific. At the present time the Gooney is found only on the Leeward Islands, or northwestern islands, reefs and atolls of the Hawaiian chain; and of these several islands, Midway and Laysan share 95% of the birds. The present world population totals of each species is estimated at some 1.5 million Laysan and 300,000 Blackfooted Albatross, of which about one third nest each year.

The Gooney provided entertainment to the first inhabitants of the island. As long as the island was used only by the Cable Company and for a "Clipper stop", the bird was not a problem. The Ironwood tree provided excellent shelter and long needles for the nests, and the roads and underbrush controls necessary on an inhabited island provided the runways, takeoff and landing areas desired by the birds. The graceful soaring Albatross became an irritant once the island had a runway and became a military airfield. With the advent of high performance aircraft, the irritant became a hazard. Hitting a Gooney with an airplane in the "old days" was nothing. Jet aircraft do not take well to objects passing through their engines and they land at twice the speed of WWII aircraft.

Consideration of this problem caused an extensive study of the habits of the North Pacific Albatross. The Gooney has attracted attention of birdologists for years, but the first exhaustive studies were undertaken in 1956 as a part of the program to determine the compatibility of the bird with modern aircraft.

It was during this investigation that it was discovered how important Midway was as a home for the Gooney, how practical it would be to remove the bird from the island, and how to live with the Gooney.

As a result of a series of studies following the initial one of 1956, the topography of the island near the runways was changed slightly to provide favorable soaring areas for the bird other than over the runways, in fact remove the runway as their primary soaring area. The hazard of bird strike was not completely eliminated and collisions between bird and plane are still frequent. However, the problem has been minimized without destroying the traditional nesting grounds.

During the "infamous" Gooney" purge of 1957, an attempt was made to relocate the Gooney. Very little hope was held for this solution to the problem. The experiment was made and the results predictable. Eighteen birds were "relocated" from Midway to Whidbey Island, Washington, Sangley Point near Manila, Iwakuni, Japan and to Guam among other points. Fourteen birds were back on Midway within two months.

The Laysan Albatross first selects a nesting place some 8 years after hatching. The bird first returns to the nesting area 2 or 3 seasons prior to nesting, but the youngest known bird was 7. The bird is not too choosy in where it first nests, selecting any one of the traditional nesting islands, although usually within the same atoll of its birth.

However, once the Gooney has selected a home, it returns season after season to the same location. About 75% of the returning nesting pairs make their nests within 2 yards of the previous nest site.

The birds are particular about their choice of mate and exhibit a faithfulness rarely seen in human societies. There is a divorce rate of about 2%, and a widow or widower will normally spend a year or two in mourning before selecting a new partner. An exception to this fidelity is reported when an egg is broken early in the nesting period. The female may select a new mate for the next season, possibly on the grounds of bad luck. The Laysan is fertile until about 31 years old, and some birds are known to be at least 40. The normal life span is about 25 years.



SYMBOL OF THE ISLAND is the Laysan Albatross, commonly referred to as the "Gooney Bird."

