

CHRISTMAS ISLAND

INFORMATION

AIRLINES

Kiribati National Airline AIR TUNGARU operates all services from Honolulu to Tarawa and Papeete via Christmas Island. Details of schedules and tariffs from Air Tungaru Office, P.O. Box 43, Bairiki, Tarawa, or Air Tungaru Corporation, 3049 Ualena Street, Suite #801, Honolulu, Hawaii 96819.

IMMIGRATION & CUSTOMS

A valid passport is required by all visitors to Christmas Island. Non British/non Commonwealth subjects are also required to obtain an Entry Visa. All visitors must possess return or onward tickets. Entry Visas will be issued upon arrival to persons in organized tour groups. Firearms, ammunition, explosives, drugs, and indecent publications are prohibited. There is also a strict quarantine on the import of plants and animals.

ACCOMMODATION

Captain Cook Hotel is situated in the north of the island some four miles from the airport in an ocean-side position with its own fine sandy beach. It has 24 rooms, 12 of which are air-conditioned. Each room has a private shower and toilet. The hotel has a restaurant, bar and shop. Room service is available during restaurant hours.

There are no facilities on the island for camping.

Tipping is not permitted.

There are no service charges or taxes.

CURRENCY

The Australian dollar is the legal currency of Kiribati. Travellers cheques and U.S. dollars may be exchanged for local currency at the hotel. There are no facilities for the use of credit cards or personal cheques on Christmas Island.

COMMUNICATIONS

There are no telephones on Christmas Island for either local or overseas use. No telex facilities exist that may be used by visitors. Overseas telegrams are received and dispatched daily via Tarawa.

LANGUAGES

I-Kiribati is the native tongue of the local inhabitants of Christmas Island. The majority of people have a good command of spoken and written English.

CLIMATE

With a maritime equatorial climate the mean annual temperature is 80°F (26.7°C). Easterly trade winds provide a pleasant cooling breeze throughout the year. Average rainfall on Christmas Island is 30 inches per annum.

For further information regarding visitor facilities on Christmas Island write to:

The Office of Tourism,
Ministry of Natural Resource Development,
Christmas Island (Republic of Kiribati),
Central Pacific

Design and photographs by A. Whincup

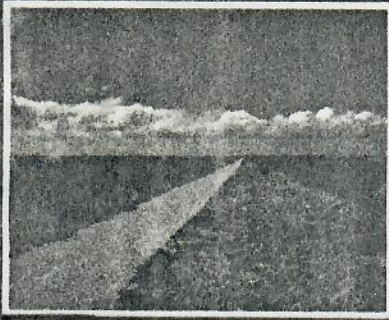


Come
Fishing

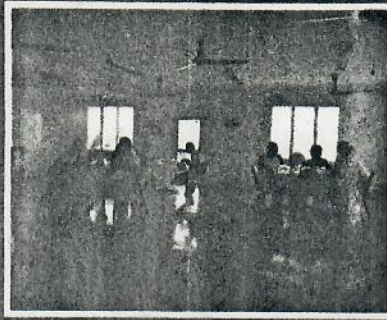
KIRIBATI

Balazs - see the last page about Turtles!
at Christmas Island.

D. Crear



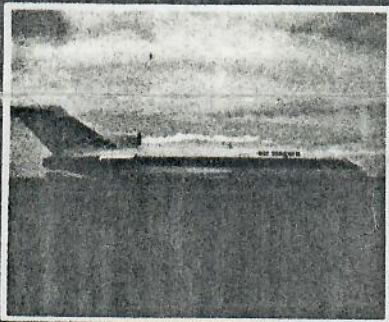
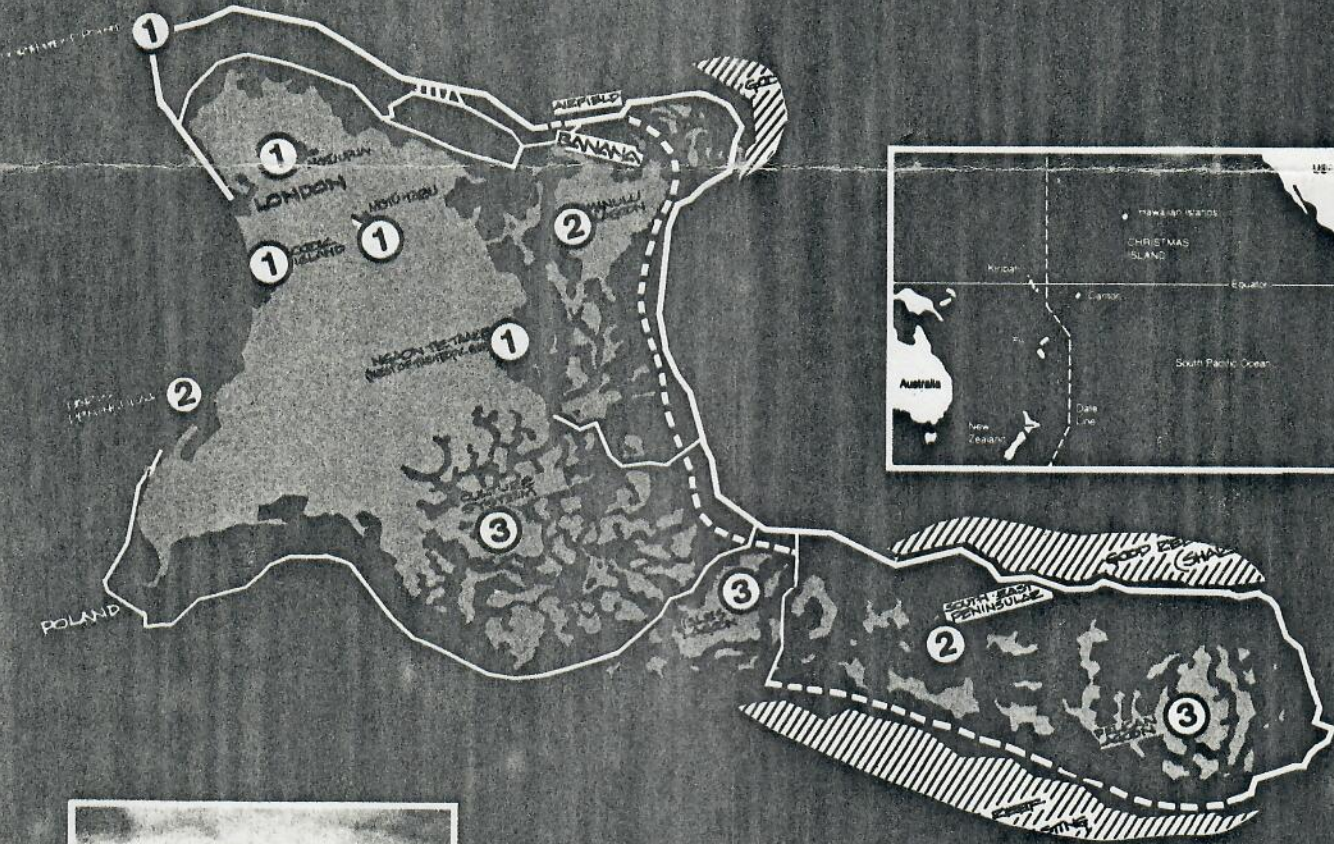
Good roads link most places



The hotel dining room.



Captain Cook Hotel.



Weekly jet connection

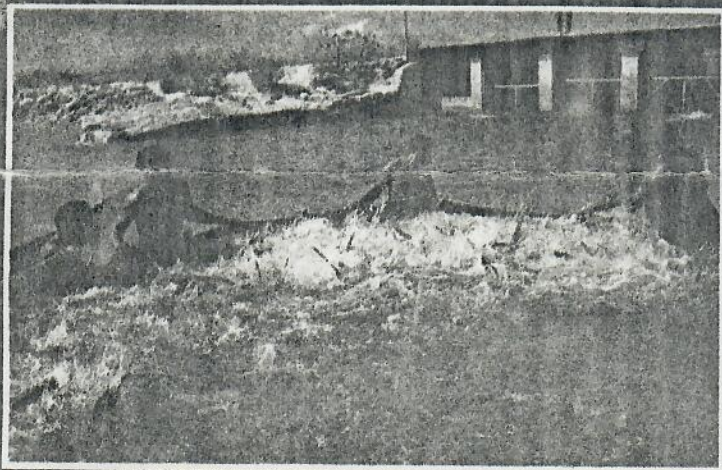
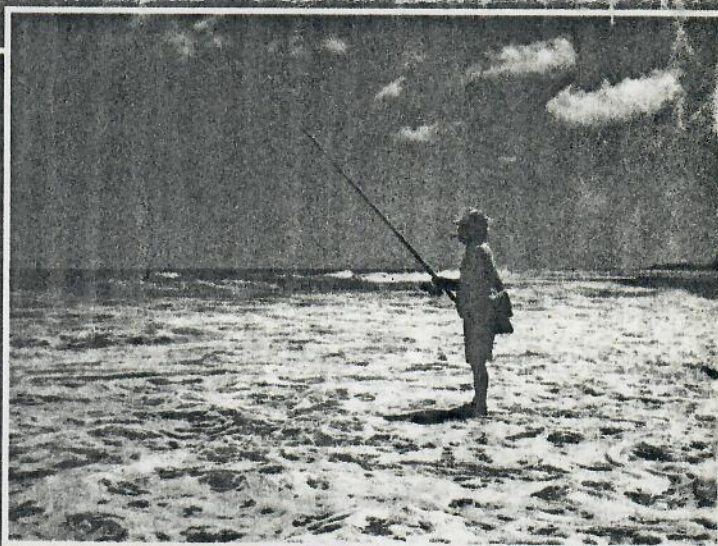
- 1 BIRD SANCTUARIES (Closed areas)
- 2 AREAS OF SPECIAL WILDLIFE INTEREST
- 3 FISHERIES DEVELOPMENT (Prohibited areas)

Asphalt roads
Lagoon-mud roads
Unmade roads.

From the day of your arrival on Christmas Island until your departure you will be assured of one thing:—This is THE location for big fish.

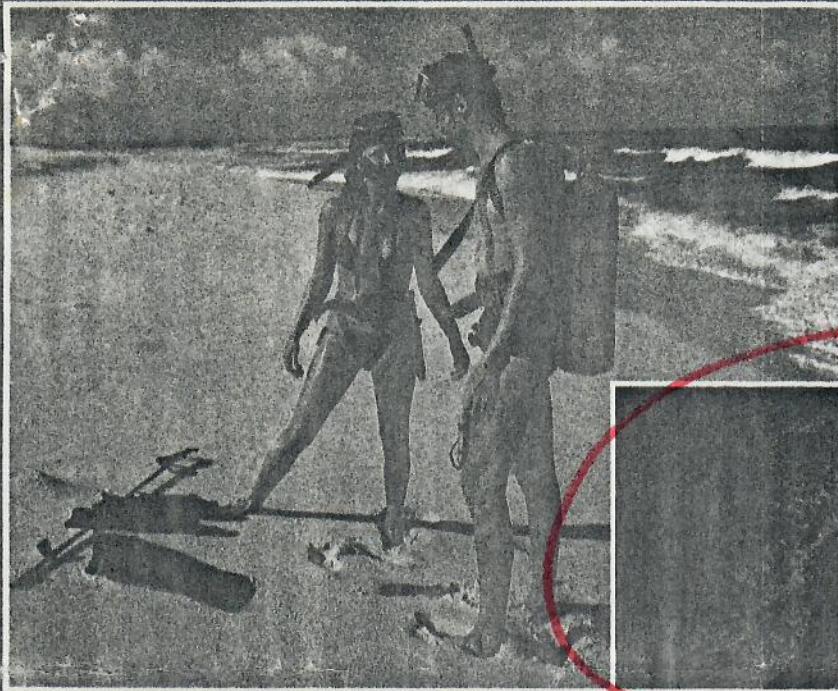
For both diving and fishing, pick-up trucks and boats with crew are available for hire from Atoll Plantations Ltd., who also have facilities for supplying air at 3,000 psi at 3 cu.ft./min. Nearly all of the island's 100 miles of coastline are easily accessible by boat and road, with many areas suitable for shorecasting around high and low water, and even inexperienced snorkelers will find excitement watching fish in the shallow waters near Paris.

Very large Trevally and Snappers live in the reef waves, many are potential record breakers—many will break you!



Harvesting milkfish at the Huff Dam for export. The fish trap operates at a sluice gate to an 11-square kilometer culture system. Lobsters, lagoon and reef fish are exported weekly to Hawaii and the Republic of Nauru.





NOTE

For the experienced scuba diver, the corals and fish life are spectacular. Christmas Island has a large population of Grey Reef Sharks, and the reefs are full of totally unexploited fauna; Turtles and Giant Wrasse, Triggerfish and large Snappers abound.



Boats are available for lagoon fishing for large Trevally and Bone fish or you can try trolling for big game fish in the ocean. Yellowfin tuna, Kingfish (Ono), Sailfish and Marlin are among those to be caught locally.



Christmas Island is a Nature Reserve with many bird sanctuaries. Resident Wardens of the Kiribati Wildlife Unit will assist visitors in viewing the bird colonies.

There is also a full-time Tour Liaison Officer who can arrange such special activities as journeys by traditional sailing canoe, picnics and expeditions to distant parts of the island.

AECOS

46-132 Kahuhipa Street
Kaneohe, Hawaii 96744