

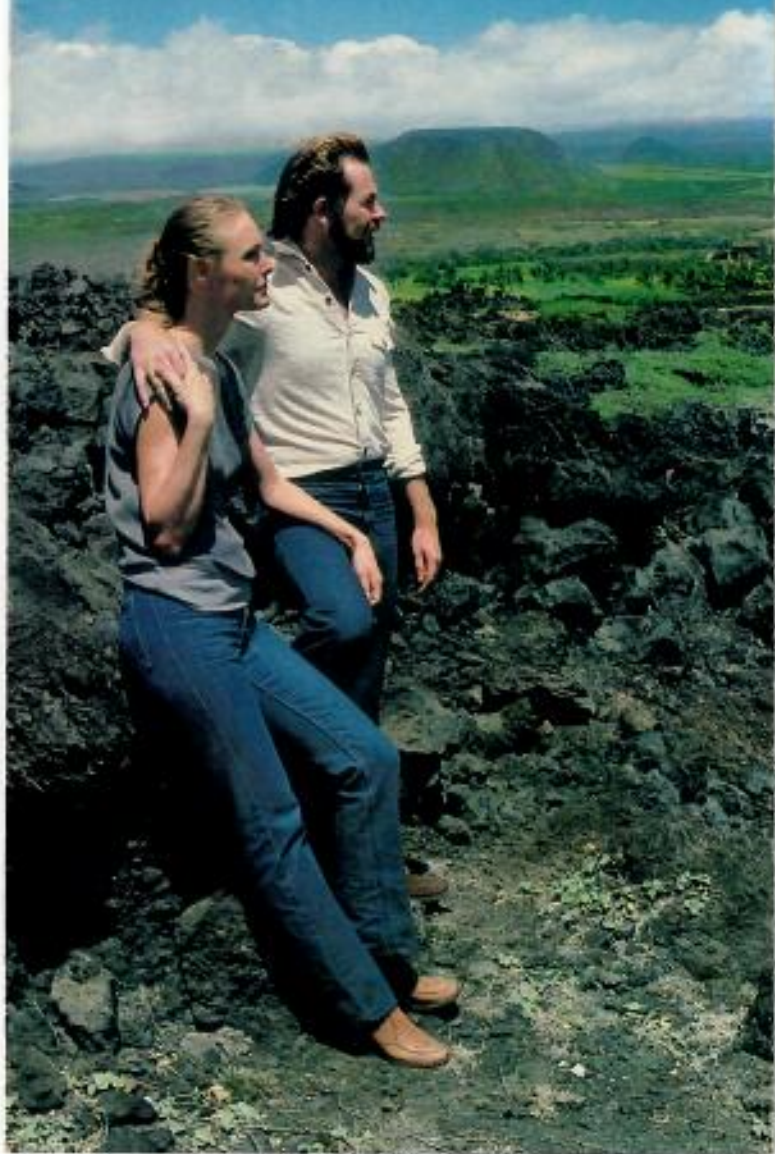
PUNALUU / KAU FILE  
1970s-1990s G.H. BALAZS

Hawaii

# SeaMountain at Punaluu

---

## Big Island of Hawaii





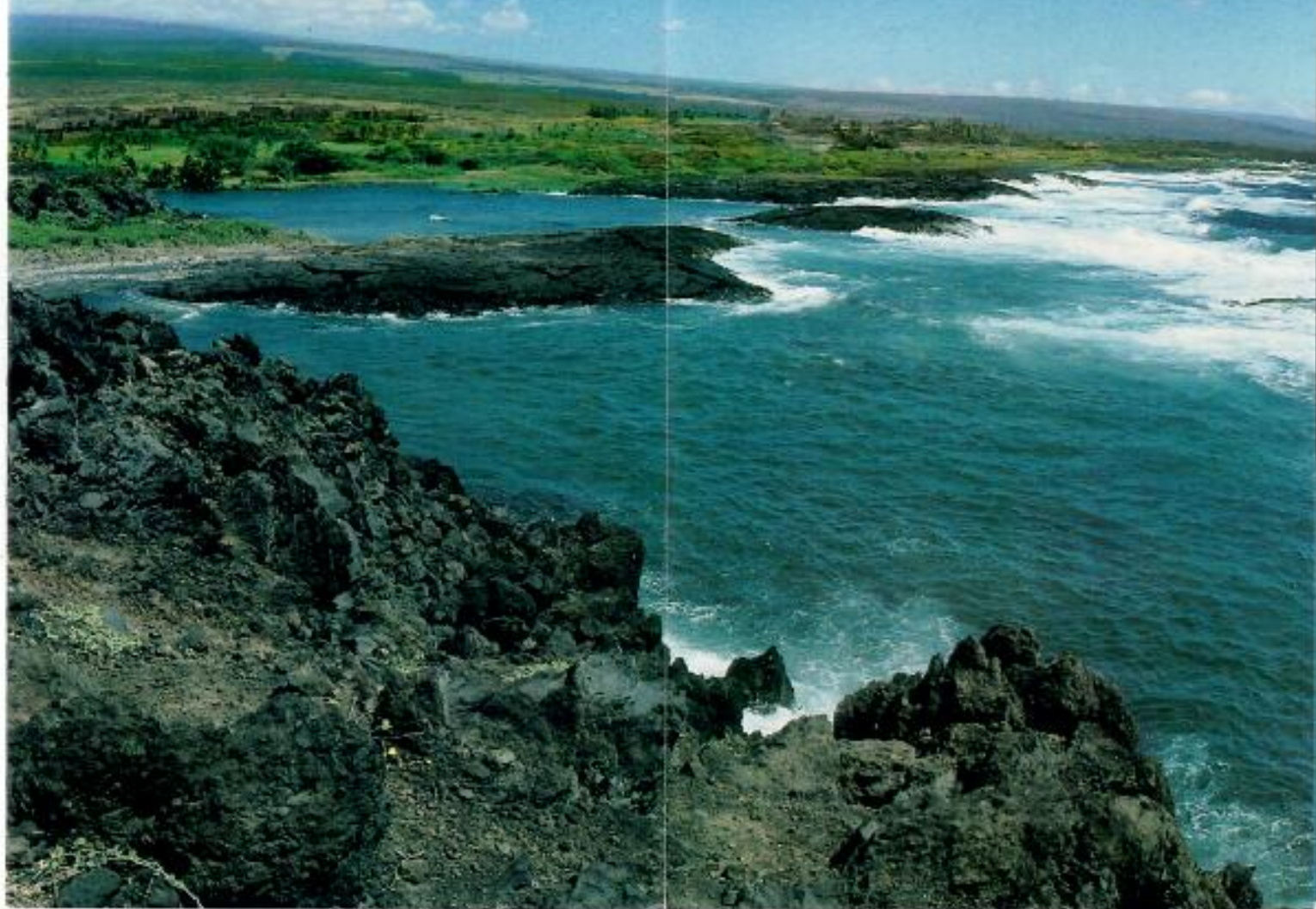
No schedules, no crowds, no rush.  
No clocks, no problems, no hustle, no bustle.  
Just serene beauty. Cool tradewinds. And  
barefoot quiet.

SeaMountain at Punalu'u is a place for renewal of  
body and spirit, in a land where time flows gently.

With tennis and golf, hikes and fishing.

And reflective moments.

Not for everyone, surely. But SeaMountain at  
Punalu'u is, perhaps, the Hawaii for you.





Hawaii

# SeaMountain at Punaluu

A thoughtful place  
for seminars

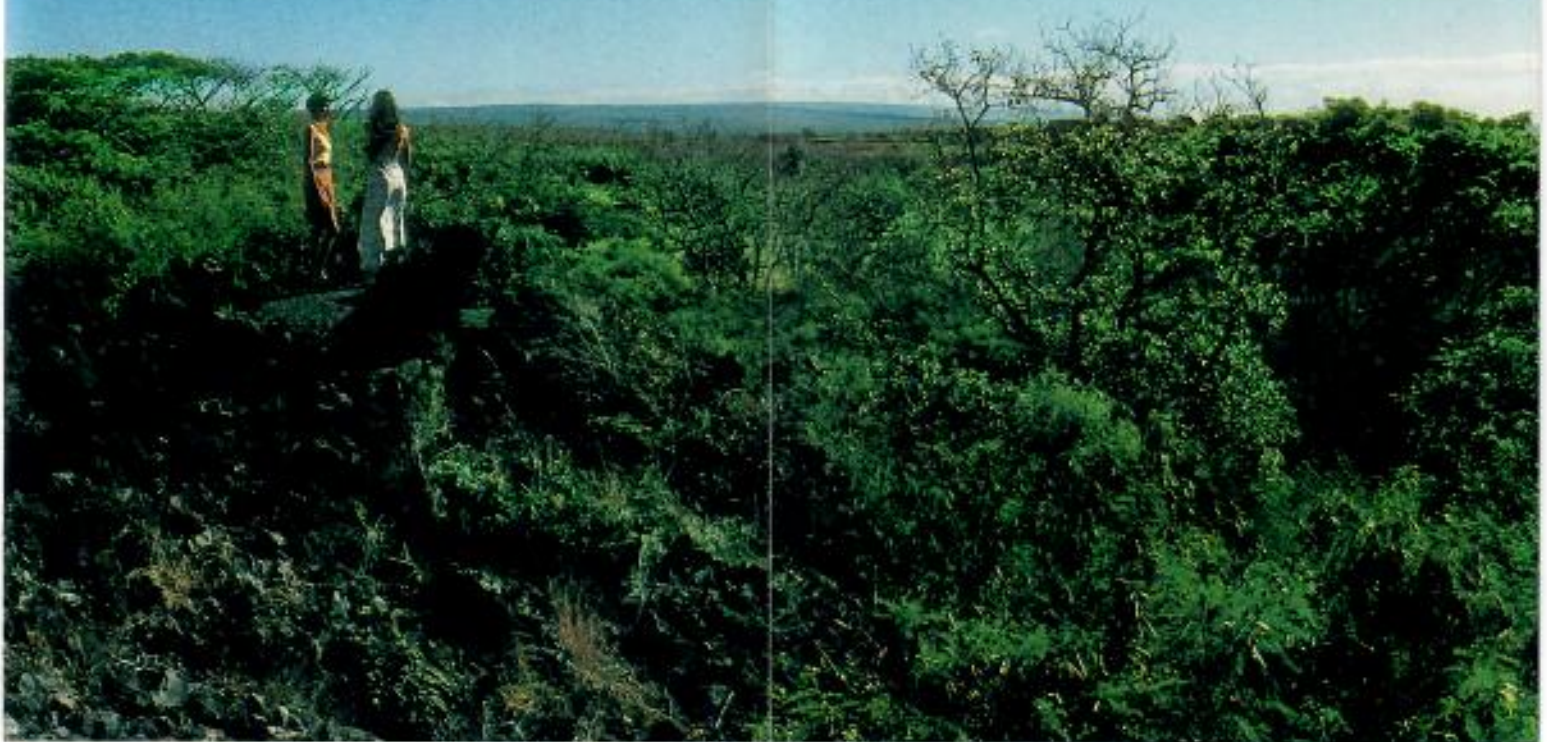




Climate and setting can calm the mind and ready it for creative thought.

So it was that the Aspen Institute selected Punalu'u to locate a unique cluster of conference spaces where men and women from around the globe share ideas and dialogue.

Similar groups make use of available meeting facilities, enhancing the community's intellectual and cultural life.















# SeaMountain at Punalu'u

on the Big Island of Hawaii . . . halfway between Hilo and Kona . . . is set within a sunfilled, sweeping land. The land begins with black sand beaches, palm-fringed lagoons and ancient Hawaiian gathering places on the blue Pacific's edge. It climbs through sprawling ranchlands, brilliant green sugarcane fields, macadamia nut groves and tropical rain forests . . . up the 13,700 foot flanks of Mauna Loa (Long Mountain) . . . spacious, peaceful, seemingly without end. Truly, Punalu'u . . . the jewel set in Hawaii's Big Country. Unique. A special place . . . for you.



**The Colony**, a cluster of comfortable accommodations for visitors and village residents alike. Studio, one- and two-bedroom cottage apartments are available, completely furnished down to kitchen utensils and linens. Golf, swimming, tennis and conference facilities are a short stroll. Shop at The Colony's convenience store or at villages close by.



Play Tennis on precise, new Laykold® courts in a garden-like setting with a teaching professional at your service. The courts are uncrowded and there is always time for an extra set or two.





**SeaMountain Golf Course**, par 72, is one of the most beautiful in Hawaii. Mountain and ocean views from each of its 18 holes. Club house, shop and professional services. Unhurried play, challenging, yet relaxing.



**Conference Center** of the Aspen Institute-Hawaii contains three meeting buildings, lanai and outdoor conversation area, plus additional facilities. Ideal for groups of 50-100 persons.



**Black Sand Beaches**, quiet lagoons and an unspoiled shoreline at Punalu'u are ideal for swimming, sunning, fishing, or simply beachcombing. Exploring heiaus—sacred places of ancient Hawaiians—and Hawaiian petroglyphs are just two ways you are brought in touch with the rich culture of Punalu'u.

**Punalu'u Black Sands Restaurant**, overlooking a palm-edged, tropical lagoon separated from the Pacific by famed Black Sand Beach. Open seven days a week, continental fare.



**Hawaii Volcanoes National Park**, 30 minutes from Punalu'u is a great natural phenomenon, where nature has chosen to renew itself . . . a unique learning experience.

SeaMountain at  
**Punalu'u**



. . . a special place for special people . . . on the Big Island of Hawaii





# Ka'u Report

Volume 3 No. 1

July, 1978

Ka'u Hawaii



## NAALEHU SCHOOL RECEIVES THE MAYOR'S AWARD

Janice Lacro, representing the student body of Naalehu School, accepts The Mayor Herbert Matayoshi Multiple-Sclerosis Read-A-Thon Perpetual Trophy from Dr. Edward Fujimoto, Administrative Assistant to the Mayor.

(story inside)



MAYOR'S AWARD

The Mayor Herbert Matayoshi Multiple-Sclerosis Read-A-Thon Perpetual Trophy (for Big Island Schools with enrollment of 499 pupils or less) was awarded for the first time on June 8th 1978 to Naalehu School. This was the first year that Naalehu School had participated in the M.S. Read-A-Thon!

In making the presentation, Dr. Fujimoto commended the pupils for their outstanding achievement both in the number of books read during the month of March, and for their participation in a very worth-while community service project in support of the Programs of the Multiple Sclerosis Society.

Individual pupils awarded gold "certificates of Excellence" for outstanding achievement in the '978 M.S. Read-A-Thon were: In grades K-3, Candy Hashimoto for most books read; Ken O. Yanagasawa for most sponsors signed up; and Earl Nahinu for most money raised. In grades 4-6, Certificates of Excellence were presented to: Eli Emmsley, most books read; Roxanne Amaral, most sponsors; and Jon Miyahara, most money raised. In grades 7-9, the Certificate of Excellence went to Janice Lacro for winning in all three categories.

The Rev. John D. Beck, coordinator for the M.S. Read-A-Thon for the Big Island, Complimented the pupils of Naalehu School on their outstanding record which in their first year as participants in the Read-A-Thon won for them the privilege of being the first school to have custody of the new Mayor's Perpetual Trophy. Mr. Beck announced that the pupils of the Big Island Schools participating in the 1978 Read-A-Thon had achieved the following records:

	Readers Completing the Program	Total Books		Money Raised
		Read	Books	
1977	682	10,449		\$13,349.63
1978	1,370	24,825		\$30,761.00

Funds raised by the Read-A-Thon will be used by the M.S. Society for research in the effort to find the cause and possible cure for the mysterious disease Multiple Sclerosis, and for services to patients in our communities who are suffering the crippling effects of this strange disease which strike young adults.

MANGANESE NODULE DEPOSITS IN THE PACIFIC  
by Robert Yokomizo

This report on manganese nodule deposits in the Pacific covers mainly the following areas of the subject: Definition of manganese nodule, where they are located, how big is the deposit, who is interested, and also employment availability.

What is manganese nodule?

We can define manganese nodule as a lump of grayish-white metallic chemical element usually hard and brittle, which rusts like iron but is not magnetic. It is used in the manufacture of alloys of iron, aluminum, nickel and copper.

The manganese nodule deposit is located mainly in the North Pacific, south of the Hawaiian Islands. Very few deposits are located in the Atlantic and Indian Ocean.

There are manganese nodule deposits all around the Hawaiian Islands, mainly at these depths--400 to 800 meters, 1200 to 1600 meters, and 2400 meters.

The nodular materials lie approximately 500 miles south of Hawaii and form a broad east-west band across the Pacific. Nodules rich in nickel and copper are characteristic of the region.

Japan is an island country, and because of limited land and resources is looking for manganese nodule exploitation. Japan's future requirements for the use of nickel, copper, cobalt and manganese will be very greatly increased.

Japan imports most of the copper and nickel ore. Japan can use the rich manganese nodules in the fight against pollution material.

Employment availability will be very great. There are various aspects to mining, which requires many employees in the various stages of mining. First, in the mine site, then transportation to the processing plant.

Logistical support requires various jobs. All of the above would require administrative support functions and product marketing. The never ending research and exploration must be constantly in progress.

continued next page.....



These jobs are just those that are directly involved in the mining and processing. To do all of the above, just to mention a few things, the harbor has to be deepened enough to accommodate the large ore ships, the docks have to be built to receive the ships, fuel tanks have to be enlarged to accommodate the increase of machinery, etc.

With these few subject areas covered in the manganese nodule deposit in the Pacific, the question comes to our minds: what is the state of Hawaii doing about this great potential as a major economy? Do we in Hawaii like to pursue this business, knowing the problems which it will no doubt produce; such as pollution of the waters, air, and over-population?

Editors Note:

The island of Hawaii is considered a prime location for refining the ore from manganese nodules. Development may be several years in the future, yet we felt it important and timely to publish this report.

SEA MOUNTAIN OPEN TENNIS TOURNAMENT

July 21st and 22nd  
Men and women singles and doubles  
no mixed doubles  
For information call

Richard Colvin Sea Mountain  
Tennis Professional

ASTRONAUT VISITS NAALEHU SCHOOL

Tuesday, June 6 was a very special day for the students and faculty of Naahehu School. We were honored to have with us Captain Ellison Onizuka, an astronaut with the National Aeronautics and Space Administration (NASA).

Captain Onizuka was born and raised in Kona where he attended Honokahau Elementary and graduated from Konawaena High School. He received his Bachelor of Science Degree in Aero-space Engineering from the University of Colorado and was also commissioned as a Second Lieutenant in the U.S. Air Force. In 1969, he received his Masters Degree in Aero-space Engineering, In January 1978, he was selected as one of 35 astronauts for duty with the National Aeronautics and Space Administration in Houston. He was selected from over 8,000 applicants.

During the presentation, Captain Onizuka showed the development of the Space Shuttle. The Captain explained how the shuttle could be used to do exploratory work and also provide solar energy. Through the use of slides, we were given a tour of the space shuttle and informed of the preparations and tests involved in launching the space shuttle.

Captain Onizuka impressed upon the students how important it is to do well in school if they are looking forward to a career filled with opportunities.

Grade 5 reporters: Jonathon Lacro  
Jim Manoha



IT'S A GIRL

Mrs. Tim Shea (former Vandy Lorenzo), had a baby girl tipping the scales at 6 lbs. 2 oz. on June 20th. She is now residing at New Port, North Carolina. The Grandparents are Mr. and Mrs. Donald Lorenzo from Naahehu.



ALU LIKE

FUNDING SOURCE WORKSHOP

Where: At Honuapo Mill  
When: Wednesday July 19, 1978  
Time: 7:00 p.m. to 9:30 p.m.  
What's it all about?

There will be 4 speakers, explaining the sources of funds, money to finance community projects. This is one in a series of workshops being sponsored by Alu Like around the islands, open to the public, and no charge.

P R E S S R E L E A S E

PUNALUU BEACH PARK

Councilman Jim Dahlberg has requested a resolution be drawn directing the administration to open those two pavilions not being repaired at the Punaluu Beach Park.

He has met several times with the Director of Parks & Recreation Department, Mr. Milton Hakoda, and has not been able to get the County Administration to allow the use of the two smaller pavilions. Councilman Dahlberg states that there is no reason why those two pavilions have to be closed off because they will not be worked on during this period of repairs. He also states: "To add insult to injury, they are doing it during the summer months!!!"

★ ★ ★

TAX COLLECTION SCHEDULE FOR THE MONTH OF JULY

July 11, 1978	Naaalehu Court House	10a.m. to 11:45a.m.
July 11, 1978	Pahala Bank of Hawaii	1:15p.m. to 2:30p.m.
July 25, 1978	Naaalehu Court House	10a.m. to 11:45a.m.
July 25, 1978	Pahala Bank of Hawaii	1:15 p.m. to 2:30p.m.

CLASSES AT THE MILL

LAUHALA WEAVING

Mrs. E. Kalani  
8:00 a.m. - 4:00 p.m.  
Monday thru Friday

Z. De Bernardi  
Mae Akamu  
Monday 7:00 p.m.  
Sponsored by the Hawaiian Civic Club of Ka'u  
Everyone is welcome

CHORUS

WOODWORKING

Manuel Cariaga  
8:00 a.m. - 4:00 p.m.  
Monday thru Friday  
Tuesday nights - 7 p.m.

HAWAIIAN CRAFTS

Kana'e Keawe  
Tuesday  
7:00 p.m. - 9:00 p.m.  
Sponsored by the Hawaiian Civic Club of Ka'u  
Everyone is welcome

OIL PAINTING

John DePonce  
Monday  
7:00 p.m. - 10:00 p.m.  
Department of Education

WOODWORKING

Tom Honda  
9 a.m. - 4 p.m.  
Monday thru Friday  
Tuesday evenings 7-10

LAYOUT

Margie Pedra  
Tuesday, 1-4 p.m.  
Friday, 1-4 p.m.

PRINTING

Zachary DeBernardi  
Tuesday, 9 a.m.-12 p.m.  
Friday, 9 a.m.-12 p.m.

PRINTED AND PUBLISHED BY THE PEOPLE OF KA'U

Title I of the Higher Education Act of 1965  
Hawaii State Post Secondary Commission  
Center for Continuing Education and Community Service  
University of Hawaii at Hilo

PLEASE ADDRESS CORRESPONDENCE TO:

Ka'u Report  
P.O. Box Q  
Naaalehu, HI 96772



## TURTLE INFORMATION NEEDED

George Balazs of the Hawaiian Sea Turtle Research Program is seeking biological and ecological information on young sea turtle (under 10lbs.) Virtually nothing is known about sea turtles from the time they are born and until they are first seen as juveniles. It is believed that the smaller turtles live in the open ocean far away from land for a period of time. To gather more information Balazs is looking for specimens of turtles found in the stomachs of pelagic fish such as tuna, mahimahi, marlin, shark and others. The information gathered in this project will be valuable in improving management of Hawaiian sea turtles.

Any fisherman finding such as fish with turtle content in the stomach, should call Balazs at 247-6631 (neighbor islanders may call collect). He will arrange for immediate pick-up and delivery to a laboratory for study. For more information on this project, write to George Balazs, Hawai'i Institute of Marine Biology, P.O. Box 1346, Kane'ohe Hawai'i 96744.



Bulk Rate  
U.S. POSTAGE  
PAID  
Hilo, Hawaii  
Permit No. 20

LOCAL PATRON





# Ka'u Report

Volume 3 No. 12 November 1979 Ka'u Hawaii



Keola's transportation to work with the summer youth program at the mill, "Save on Gas," but big is looking for a place to park.



### HELP NEEDED

The Board of Directors of the "Mill" are concerned about the future of the monthly newspaper "Ka'u Report". Many residents of Ka'u look forward to this monthly subscription free news report.

This newspaper has been covering events that are happening in Ka'u along with the many classes that are being offered to residents. Print is provided free and covers the senior citizens to our pre-school youngsters.

The cost of printing this newspaper cost the "Mill" some \$6,000 a year. This amount covers the bulk rate postal fee, newsprint paper and ink. Previous funding from the University's Continuing Education and Community Services will be running out. This cost does not include the labor cost. Margie Pedra and Zachary De Bernardi have been volunteering their services to put out this monthly report.

In order to keep this paper going, we will need financial help. We are a non-profit organization. Anyone desiring to contribute may do. Another way in which help may come about is by writing or calling your state representatives. We need to make a plea to support our project at the mill by some legislative appropriation to the University's Continuing Education and Community Services.

Your kokua in keeping this viable afloat will be greatly appreciated by the Board of Directors of "Home Na'auao".

★ ★ ★

### HAWAIIAN OCEAN VIEW ESTATES EXERCISE CLASS, BY SANDRA MAY SCRUTON KNOWN AS "KASSANDRA"

Class will start Nov. 19, 10:00 a.m. thru 12:00 p.m. will run for 10 weeks. Will meet at H.O.V.E.

Senior Citizen 10 or more no charge, if a group of 10 with non-seniors the non-seniors will pay \$10.00 tuition. Non-Seniors only \$20.00 - \$25.00 for 10 weeks session, if a couple of seniors interested they will be taken care of through Senior Service Center.

I would like in my exercise class to introduce to the class the holistic concept of health and share and incorporate into the class some of the holistic concepts.

Registration -- Phone 961-9555 or 929-7416.



A break for the summer O'pio group excursion on the glass bottom boat, to see the fishes in the deep blue sea.



## WOMEN HEALTH WORKSHOP

On Saturday, November 17, from 4:00 until 7:00 P.M. at the Cultural Center of the Punalu'u Restaurant, The Women's Center is sponsoring the first in a series of workshops towards women's health.

The first workshop will feature Dr. Jacqueline Brittan, a Psychologist who is in private practice in Hilo, and has done extensive research into human sexuality, especially as it concerns women. She will include information from recent studies into similarities and differences in male and female sexual responses, the physiology of the female orgasm, as well as slides and a question and answer period. The workshop is for women only.

"This is a subject of interest to everyone but few are experts in this field. I want to encourage all the women of Ka'u, o'pio as well as makua, to take advantage of this opportunity to meet Dr. Brittan, and share knowledge about this much discussed but seldom understood subject," states Jessie Hillinger, Ka'u Outreach Worker. "I am sure each participant will gain new information as a result of this workshop."

If you have questions or need more information, call Jessie at the Ka'u Women's Center, phone 9288212 or her home, 9288048.

The Ka'u Women's Center is a branch of the Hilo Women's Center, a participating agency of the YMCA. There will be no charge for the workshop, but a donation will be asked to pay for the cost of the room. Dr. Brittan will be available for informal discussion following the workshop, at a no-hostess reception at Punalu'u Restaurant.

### REMEMBER

The date for submitting materials to the Ka'u Report is now the 15th of each month.

## UNITED STATES DEPARTMENT OF AGRICULTURE SOIL CONSERVATION SERVICE

P. O. Box 1361, Hilo, HI 96720

October 17, 1979

Hon. James L. K. Dehlberg  
Councilman, County of Hawaii  
25 Aupuni Street  
Hilo, HI 96720

Dear Mr. Dehlberg:

This is in response to your October 5, 1979 letter concerning work along the Paeau Stream.

On August 30, 1979, bids from all interested contractors were opened for the Paeau Stream Project. The price of the low bidder far exceeded the Soil Conservation Service engineers' estimate of what the project would cost. As a result, we had to go back to Washington to request additional funding before we could proceed.

On October 16, 1979, the County and SCS signed an amended project agreement increasing the available funds to \$232,000.00. With sufficient funds now committed, Isomoto Contracting Co., Inc. will be given the go ahead to begin work.

We expect work to begin within one month and anticipate completion of the project about 100 days after construction starts.

If you would like any other information, please feel free to give me a call.

Sincerely,



Larry R. Soenen  
District Conservationist

cc Ka'u Report  
Ms. Anna Cariaga  
Mr. & Mrs. Shigeru Kayano  
Donald Shintaku, Chairman, Ka'u SWCD



## FIVE KA'U RESIDENTS VISIT THE ISLAND OF KAHO'OLAWÉ

Five Ka'u residents participated in the September access visit to Kaho'olawe. For myself, Ralph Dedman of Punalu'u and Willie Viernes of Naalehu, it was our first experience of touching the aina and we all agreed the experience had a strong effect on us.

Richard DeLeon of Oceanview and Deborah Murphy of Wood Valley have taken part in past landings.

The slow process of negotiations with the military continues; a time for the Protect Kaho'olawe O'hana to malama the island, clear historical sites, plant coconuts, catch fish, and listen to kupuna share their mana'o, and a time for the navy to bomb, which they have been doing continuously since 1941. There are unexploded ordinances everywhere and military personnel accompany each group that leaves the campsite at Hakioawa Bay. Kaho'olawe is not owned by the military, however they have jurisdiction over it by a 1953 presidential order. (Eisenhower) It is a sister island to Moloka'i and Maui and is part of Maui County.

Kaho'olawe encompasses 45 square miles of varied terrain including hills, valleys, plateaus, sandy beaches bordered by coves in which fish and limu abound. At least two island pools have been spotted from the air. Hundreds of historic sites have revealed the island's key role in the entire archaeological record of the Hawaiian people. Ancient chants and archaeological evidence indicates that Kaho'olawe was inhabited for over 900 years, since 1000 a.d.

Hawaiian lived in both coastal and interior settlements where major activities included fishing, agriculture, and adz quarry and many shrines and temples.

continued on next page.

Continued surveys of the island by a private archaeological firm has been successful in finding many new historical sites, and attempting to have them registered in the National Register of Historical Sites. With the aid of the Hawaiian community and members of the O'hana, the interperiting and finding of new sites have turned up much new knowledge of the type of lifestyles and relegion that was practiced by ancient people of the island.

Due to the abundance of perserved historical sites and artifacts, it is hoped that eventually the entire island will be declared a National Landmark.

In order to share our experience of Kaho'olawe, there will be a gathering at Home Na'auao o Ka'u,(The Mill) Tuesday, November 13, at 7:00 p.m. Slides taken on recent asseses will be shown and questions answered. If you need more information you can call Richard Deleon, 929-7161 or Jessie Hillinger, 928-8048.



Summer youth program ends with a Hoolale'a at the mill.





COUNTY COUNCIL  
COUNTY OF HAWAII  
HAWAII COUNTY BUILDING  
1000, HONOLULU, HAWAII

September 12, 1979

RE: SPORTSMAN'S CLUB OF KA'U, ET AL. V. BOARD OF LAND AND  
NATURAL RESOURCES, CIVIL NO. 4895

Dear Zachary,

On August 11, 1979, Mr. Roger James met with Club representatives of the Sportsman's Club of Ka'u. After an inspection of the gates and a discussion on access through the public land held under permit by Mr. James, a preliminary agreement was reached.

A proposal for public access over these lands, which appears to be acceptable to both the Club and the present permittee, is as follows:

1. There will be two entries to the Papalehao Trail, one locked and the other unlocked.
  - (a) The lower entry, which is located at an old ranch gate approximately 3/4 of a mile south of the present gate, shall be unlocked and used exclusively for hikers and persons on horseback. **RATIONALE:** The permittee expressed some concern for hikers' safety as he keeps dogs at the upper improved area, and the lower trail will allow circumvention of the improved area and will merge with the Papalehao Trail about 1/2 mile from the beginning of the trail. Another concern was the presence of horses close to the permittee's corrals, which is in the upper improved area and where the permittee's breeding stock is kept. By directing horse riders to the lower gate, this may avoid unduly exciting the permittee's studs.

- (b) The upper entry will be made at the gate presently used by the National Park. Vehicle entry will be allowed here through a locked gate. The Club will provide the lock and a sufficient number of keys, which will be held and checked out at the National Park headquarters. **RATIONALE:** This again addresses the concern of the State's permittee that some sort of security be provided in the improved area, while also providing the necessary vehicle access. It was agreed that there was no compelling reason for restricting vehicle access here as it is and has been a mode of access over the Papalehao Trail. Leaving the keys with the National Park provides a convenient depository and check-in, since vehicle access is only possible to the park boundary and its use will be heaviest only when hunting is allowed in the National Park.

continued on the next page



Summer O'pio to Ho'onanau  
for Hawaiian sports.



TAX COLLECTION SCHEDULE FOR THE MONTH  
OF NOVEMBER, 1979 DISTRICT OF KA'U

- Tuesday November 20, Naalehu Court House  
10:00 A.M. to 11:45 A.M.
- Tuesday November 20, Pahala Bank of Hawaii  
1:15 P.M. to 2:30 P.M.
- Tuesday November 17, Naalehu Court House  
10:00 A.M. to 11:45 A.M.
- Tuesday November 27, Pahala Bank of Hawaii  
1:15 P.M. to 2:30 P.M.



COUNTY COUNCIL  
COUNTY OF HAWAII  
HAWAII COUNTY BUILDING  
HILLO, HAWAII 96720

2. Check-in boxes will be constructed and erected by the Club at both entries. A trail guide for use by hikers is also proposed and will be left at the hiker's check-in box at the lower entry.
3. Both entries will be marked as public accessways with respect to their specific uses. Both the National Park and the permittee have agreed to assist the Club in flagging both the vehicle access and foot/horse access, and beyond the point of convergence to the terminus of the trail.
4. The Club and its members will use their best efforts to:
  - (a) Keep the entries, accessways and its surrounding areas free of litter. The Club will also provide periodic checks and litter clean-up along the trail;
  - (b) Prevent any rustling, illegal hunting and vandalism on the State land' and
  - (c) Educate the community to be responsible for use of such accessways.

5. There be an express provision in the present permit recognizing this public right-of-way, as well as in any future permit, license, lease, or deed. The present permittee stated that he has no objections to the inclusion of such a provision.

We have asked that this be placed on the Board of Land and Natural Resources agenda for the next meeting. The above is a victory for the people of the County of Hawaii and more specifically for our people here in Ka'u.

Sincerely,

James L. K. Dahlberg  
COUNCILMAN

JD:ba

WHAT KINDS OF COMMUNICATIONS SYSTEM DO YOU HAVE TO KEEP UP WITH YOU?

We have the Native Hawaiian, a newspaper sponsored and published by Alu Like that tells what is happening with Alu Like throughout the State and other cultural events and activities.

The Native Hawaiian is distributed at Wong Yuen Store, Naaalehu Pick & Pay, Luzon Store, Pahala Shopping Center, Mizuno's Superette, Green Sands Mart, Volcano Art Center, Ka'u High School, Hirano Store, Volcano Store, and Sea Mountain Punalu'u.

If anyone is interested in subscribing write to Alu Like at 614 Kilauea Ave. Hilo, HI. 96720



HOME NA'AUAO O KA'U  
NEEDS KOKUA

Is there any one in Ka'u that is willing to give a helping hand, maybe some of the Veteran? We here at the mill need some volunteers to mow and clean the yard, it only take about half hour per week, please kokua, Mahalo.

PRINTED AND PUBLISHED BY THE PEOPLE OF KA'U

In cooperation with the Center for Continuing Education and Community Service (CCECS) of the University of Hawaii at Hilo. PLEASE ADDRESS CORRESPONDENCE TO:

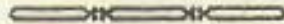
Ka'u Report  
P.O. Box Q  
Na'alehu, HI.  
96772





Smiling with finished products.

2931



UNIVERSITY OF HAWAII AT HILO  
 DEPARTMENT OF COMMUNITY SERVICE  
 1357 P.O. BOX 1357  
 HILO, HAWAII 96720
 
  

 University of Hawaii at Hilo  
 Continuing Education and Community Service  
 P. O. BOX 1357 □ HILO, HAWAII 96720

Bulk Rate  
 U.S. POSTAGE  
 PAID  
 Hilo, Hawaii  
 Permit No. 20

LOCAL PATRON

175  
 316  
 1050  
 175  
 2930

836  
 5  
 1031





MIDWAY BETWEEN HILO AND KONA at the Punalu'u Black Sand Beach, on Hawaii's Big Island. It's a peak-roofed picturebook setting overlooking an ancient Royal Fish Pond. It's old Hawaii on this southernmost tip of the United States. Punalu'u Village Restaurant is a favorite retreat for touring visitors and golfers from the nearby 18-hole Seamountain Golf Course. It's the restaurant that serves the

discriminating tastes of the world's business and professional leaders as they gather at the newest division of the world famed Aspen Institute, located on the same grounds.

**WE WANT YOU TO SEE IT FOR YOURSELF.** Now's the time to take us up on our introductory offer. There's a **SUMPTUOUS BUFFET LUNCH** 7 days a week from 11 a.m. to 2:30 p.m. **AT JUST \$3.75** plus tax and ala carte **DINNERS** from 5:00 p.m. to 9:00 p.m. weekends with entrees **STARTING AT \$4.95** plus tax. **AS A SPECIAL OFFER TO HAWAIIAN AIRLINE PASSENGERS** we're offering **\$.75** per person off at the Buffet Lunch or **\$1.00** per person for Dinner. Just tear off the coupon to the right and bring it along. (If some hungry rogue has already removed the coupon, just bring the remaining part of this insert along—we'll honor it too.)

(See other side for further details.)

On Punalu'u's Black Sand Beach midway between Hilo and Kona off Highway 11

Phone: 928-8344

**\$1.50**

**DISCOUNT COUPON**  
(\$.75 per person at lunch)  
See other side



This coupon entitles you to **\$0.75** per person off on the **Sumptuous Buffet** or **\$1.00** per person off on the ala carte **Dinner Menu** at the

  
**PUNALU'U VILLAGE RESTAURANT**

(See directions on other side.)

**THERE'S MORE THAN JUST GREAT FOOD AT PUNALU'U VILLAGE RESORT.** You'll find Hawaiian handicrafts being made before your eyes in the largest of the "huts" in the Punalu'u Village compound.

Walk on the hallowed ground where the first Polynesians migrated from the South Pacific and landed in Hawaii. See the sacred burial plots and sacrificial heiaus of these original Hawaiian Island inhabitants.

Two smaller "huts" hold gift shops which carry specially packaged Island jams and jellies along with unusual gift items.



**THERE'S FUN TOO!**

You'll find the Polynesian Bar unique and memorable. You'll enjoy the weekly "Hukilau" on the Black Sand Beach. For the sports minded there are excellent tennis courts and the famed 18-hole Seamountain Golf Course. Come visit us now!

**Phone: 928-8344**





A view of the Seamountain condominiums off the golf course in Ka'u.

Advertiser photo

## C. Brewer plan for big expansion at Seamountain runs into opposition

PAHALA — C. Brewer & Co.'s plan to revive its dormant Seamountain resort at Punalu'u ran into opposition last night at a Hawaii Planning Commission hearing on rezoning 206 acres for the project.

But the county planning department endorsed the development and asked the commission to go along with Brewer's request for the rezoning. The county also urged approval of a shoreline management permit to allow Brewer to relocate four holes of the Seamountain golf course and reroute a main roadway in the area.

Brewer's new resort subsidiary, C. Brewer Properties Inc., estimated that the golf course and road relocation project alone will cost \$17.5 million. The company has not made final estimates yet for the major items of its resort revival plan — 805 hotel units and 1,224 more condominium units — at the Punalu'u layout.

Brewer has offered to donate

to the county the Punalu'u Black Sand Beach Park and 85 parking stalls there and at Ninole Cove.

Of the first 16 people to testify yesterday, nine were either partially or completely opposed to the project while seven said they approve of it.

Plans also include 71 single-family houselots that will cost \$70,000 to \$100,000 each, a 65,000-square foot commercial addition and eight more tennis courts.

Seamountain now has a restaurant that recently was reopened for a third time, a golf course, four tennis courts, the 76-unit Colony I condominium and 19 houselots.

Brewer had announced its Ka'u resort plans in the late 1960s but backed off the project in the mid 1970s because of deflated tourism on the Big Island and the 1975 tsunami that gutted the Punalu'u Black Sand Restaurant.

Leroy Uyetake, vice presi-

dent of Brewer Properties, called what has been built a foundation for a "unique, low-rise, pedestrian-oriented resort" that will be developed over the next 10 to 15 years. In the process, 200 jobs a year in construction will be created. When completed, Seamountain would provide 1,450 jobs, including 250 that will come from resort spin-offs. The major industry, sugar, now employs about 450.

Those favoring the project said Ka'u needs to diversify its economic base and give the district's children an opportunity to remain at home and make a living. Many said because Brewer is a major landholder in the area and because the resort is to be low rise, the rural lifestyle of Ka'u will not be lost.

But others spoke of environmental issues that allegedly have not been addressed, such as the fate of Hawaiian o'opu, a Hawaiian goby fish that lives in a brackish pond near one of the proposed relocated golf holes.



November 14, 1989

Ms. Teresa Bellah, Co-President  
The League of Women Voters in Hawaii

Dear Teresa:


Thank you for your letter of November 17th regarding a public forum on the proposed launching facility to be held in Kona on December 18th. Unfortunately there must have been some mistake as I don't recall that we ever discussed this by telephone (as indicated), nor did I receive any earlier correspondence on this subject. Nevertheless, even if we had been in communication, I regret to say that I would have to decline attending a meeting of this design as a scientist employed by the National Marine Fisheries Service.

You see, my personal views on this subject would be very outspoken to the point of being incongruent with the tone that one would need at this early stage as a representative of my federal agency. Secondly, I am a biological researcher, in the research branch, thereby making me the wrong (agency-wise) person to be one of the panelists at the forum.

In case you are wondering, my personal viewpoint on the proposed facility may be simply stated as follows: If the resident people of the district want it, then the process should move forward. If the resident people don't want it, then it should die right here and now. The decision should be made immediately by a plebiscite in which a 2/3 vote would be required for the proposal to move ahead. Until such a plebiscite is held, it is my view that no environmental planning studies, or other scoping research, should be allowed, or required, because such investigations, and the resulting reports, have a way of being "neutrally biased" in favor of the project proponents, and seemingly moreso when the proponents are the ones paying for the work. The will of the people living in the district should prevail. Because there is a high percentage of people of Hawaiian heritage, to me the plebiscite idea seems even more appropriate and "just".

Again, these are my own views, and in no way should be construed as having anything to do necessarily with the agency I work for. I wish you success with your forum, and will be watching the newspapers to see how it turns out (assuming, perhaps unrealistically, that an accurate accounting will be reported in the papers).

Sincerely,

  
George H. Balazs

943-1240

395-6409



WEST HAWAII TODAY  
4-12-90 P.9A

## LETTERS

### Just say no

Editor:

To all those who despair that our opposition to Governor Waihee's proposed rocket launch facility will not be heard — take heart.

Do not be discouraged by the apparent arrogance of former admiral Hayward. His long and illustrious career in the military has prepared him to give orders, not to listen to the people. He is ill at ease in situations where people want to know the truth and all the details of his activities, preferring instead that we follow orders and leave the strategy to him. The good news is that his power is extremely limited, and those politicians who control him have heard us.

We were very fortunate to have had the opportunity to hear William Paty speak at a meeting of the Greater Kona Community Council on the evening of March 26. Paty serves as chairman of the Board of Land and Natural Resources, and also as chairman of Governor Waihee's re-election campaign. Many questions concerning the rocket launching facility were asked of Paty that night. He let us know that Gov. Waihee was aware of our strong and broad-based opposition to that project.

Then Councilman Harry Ruddle brought the loudest applause of the night when he announced that he and Helene Hale had spoken to U.S. Senator Daniel Inouye and U.S. Representative Daniel Akaka to let them know that Hawaii County would prefer not to have a rocket launch facility developed here. He further informed us that the facility was not Waihee's idea, that he had "inherited" it. It's starting to sound as if he wished it would disappear. If he would just say no, it would.

Let's all continue to encourage Gov. Waihee to re-evaluate his position, as he certainly shouldn't feel obligated to realize someone else's bad idea. Call 1-800-468-4644. Helene Hale and Harry Ruddle have heard the people and have taken action. Governor Waihee should do the same and withdraw his support from this project.

Diane Keffer  
Keokea



THIS WEEK - BIG ISLAND

**ACTIVITIES THIS WEEK**

South Point / Volcano

19-25 SEPT 1988



*A beautiful setting in a legendary area of the Big Island and a variety of Island foods make Punalu'u Black Sands Restaurant a favorite among visitors and locals alike. Midway between Hilo and Kona on Highway 11. Call 928-8528 for driving directions.*



**"THE BEST VIEW OF KILAUEA'S PU'U O'O VENT"**

on Volcano Hwy, mile marker 20 (see map I)

Chevron Dealer, Liquor, Cold Drinks, Hotdogs and Sandwiches, Postcards,  
Film and Cut Flowers. Featuring Souvenir Volcano T-shirts and Sweatshirts.  
Open 7 days a week Groceries and general merchandise 968-6522

Free Antihistamine To All Visitors





Tribune-Herald Photo by Larry Madson

**RETURNING TO THE NEST**—Last summer a female turtle identified as a Hawkbill layed her eggs on the sand at Punahoa Beach in Ka'u. In late August the nest hatched and the baby turtles

crawled into the sea. A new hatch of eggs has been discovered on the beach again this year and local residents have taken up hatch-watching.



MEMORANDUM

University of Hawaii  
Hilo College

MEMO TO

*George Ba/azs*

DATE

*7/12/78*

*Think you find this of interest!*

*Del Dyke*

MAINE OPTION PROGRAM  
University of Hawaii at Hilo  
P. O. Box 1357  
Hilo, Hawaii 96720

stration surprise  
to are Mrs. Mary

office in Hilo.

Bill McGee of the BICA.

"We have been criticized for  
lack of appeal to the local  
person," McGee said. "This  
workshop should leave every

financial aids, said scholarships  
are awarded to qualified ap-  
plicants on the basis of  
academic superiority and need.  
Grants-in-aid are awarded in

servation Award



# Public wins access to shore through ancient Ka'u trails

By Hugh Clark  
Advertiser Big Island Bureau

HILO — A Big Island judge ruled this week that Hawaii's residents must have access to the shoreline and the mountains under the doctrine of ancient Hawaiian custom.

The ruling in a class-action case in 3rd Circuit Court reopens old avenues to the shoreline of Ka'u and is expected to have statewide implications on public access — if the decision is not overturned by the Hawaii Supreme Court.

Judge Ernest Kubota, recognizing the traditions of ancient Hawaiian movement along the shoreline and from the mountains to the sea, signed a judgment in the 4-year-old case on Tuesday.

He awarded the Sportsman's Club of Ka'u and five of its members four different routes to Kawa Bay and to inland areas above the only major surfing site on the Big Island's south coastline.

In so doing, Kubota recognized the plaintiffs as a "class" — which means that they represented "all residents of the state of Hawaii," according to his ruling.

Equally important in the decision

was the ruling that ancient Hawaiian custom, as determined by testimony by expert witnesses, including two anthropologists, can be used as a basis for determining access to the shoreline.

Ancient Hawaiians never recognized private property as barriers in their movements along the shoreline to fish and travel. Today's landowners cannot bar travel now if the property is on ancient trails or paths created by the Hawaiian monarchy, according to the judgment.

Under Hawaii legal procedures, the Kubota ruling will not bind other courts in the state unless the decision is appealed and upheld by the intermediate or supreme courts.

But Kubota has created a precedent in his own courtroom for future public access disputes that may be litigated, involving the ancient trails or the King's Highway.

The decision stemmed from a jury-waived trial Kubota conducted for a week in May after the Legal Aid Society of Hawaii brought the suit against Ka'u rancher Matsubei "Thomas" Okuna.

Lead counsel Ben Gaddis said the case was the first dealing with the public-access question to come to trial in Hawaii's courts and to result

in a formal conclusion.

The dispute began in the early 1970s, when Okuna began denying access to hunters, fishermen and surfers because he said there were gates damaged and instances of malicious mischief.

In a two-year span prior to the suit, Okuna had about 50 Ka'u residents arrested for trespassing.

Under the judgment Kubota signed Tuesday, the right to access becomes permanent in 10 days unless Okuna appeals the decision to the Hawaii Supreme Court.

The decision took more than four months to draft after Kubota ruled in favor of the sportsmen's group and Henry Barba, Balbino Salmasan, Ernest Buyuan, Ralph Dedman and Pele Hanoa, individuals who specifically had been denied access to Kawa Bay and its black-sand beach.

Star witnesses in the week-long trial were two 93-year-olds who lived in Ka'u all their lives — William Melnecke and Louie Cruz. They testified about the traditions and history of the vast but sparsely settled district, which is bigger than the

See 'Ka'u on Page A-4

16 Oct 1980

Honolulu Star-Bulletin

## Ka'u Tradition Wins in Shore Access Case

By Llewellyn Stone Thompson

*Big Island Correspondent*

HILO — Circuit Judge Ernest Kubota has ruled that a private landowner in the Ka'u district must allow the public access to the shoreline by way of four traditionally used routes to the seacoast and along the coast.

Kubota rendered the decision in a case in which five Ka'u residents and the Sportsmans Club of Ka'u brought a class action suit against landowner Matsuhei "Thomas" Okuna after Okuna blocked access to the shoreline and had large numbers of people arrested for trespassing in the 1970s.

The case was the first in Hawaii in which members of the public took an access case to trial and won recognition of the right to access, said attorney Benjamin Gaddis of the Legal Aid Society which represented the plaintiffs.

THE CASE involved a question of access to Kawa Bay, consisting of a black sand beach backed by lava fields, located five miles northeast of Naalehu.

Kawa Bay had been used since ancient times for fishing and surfing, with access always available to the public, according to witnesses at the non-jury trial of the case in May.

The bay is also the site of Keeku heisu or temple, used for human sacrifices in ancient times, according to Kubota's findings of fact.

As early as 1955 but increasing in the mid-1970s, landowner Okuna began denying access to the bay, Kubota determined.

During a 2½-year period beginning in 1976, Okuna had 50 people arrested for trespassing on his property, police testified during the trial.

Kubota's ruling ordered continued public access by four trails, including the 3-foot-wide "Ancient Walking Trail," sometimes called the William Ellis trail, and the 15-foot-wide Government Road. These two trails parallel the shoreline.

KUBOTA ALSO ordered access by two other trails running from the mountains to the sea: a 10-foot-wide path called Corral Gate Road and a 3-foot-wide path called Hilea trail.

Kubota granted the access because the roads and trails had been in continuous use since ancient times, Gaddis said, and the ruling does not automatically ensure access by other trails which may not have been in continuous usage, he said.

The question of access to another Big Island coastal site, Kauanoa Beach at the Mauna Kea Beach Hotel at Kawahae, was settled out of court with the hotel, Gaddis said.



# Appeal planned over Ka'u land access case

By Frankie Stapleton

Tribune-Herald Staff Writer

Upholding the public's customary use of routes of access to the seashore, Third Circuit Judge Ernest Kubota ruled last week in favor of the Sportsman's Club of Ka'u and several individuals who brought a class-action suit against a Waiohinu rancher for denying them the right-of-way to Kawa Bay.

However, the attorney for rancher Matsubei "Thomas" Okuna told the Tribune-Herald Friday that he intends to appeal Kubota's decision that grants four avenues of access through Okuna's Ka'u cattle ranch to Kawa Bay.

Stuart Oda, Okuna's attorney, indicated he will also request that the court postpone the effect of Kubota's judgement until the appeal has been ruled on by a higher court.

Okuna had attempted to stop people from crossing his property by posting "no trespassing" signs, erecting barriers and

finally, having as many as 50 residents arrested over the years by police, actions which prompted the class-action suit by the Legal Aid Society of Hawaii.

Kubota said in his judgement that members of the Sportsman's Club and "all residents of the state of Hawaii" are entitled to access to Kawa Bay and adjacent tidelands and beaches along four easements, which include the Ancient Walking Trail, the Government Road, the Corral Gate Road and along the Hilea Trail. Kubota ordered Okuna and his agents to stop barring residents from using the four rights-of-way.

The ruling was viewed as confirming the ancient Hawaiian doctrine of the people's right of access to Hawaii's shores. Legal Aid attorneys Ben Gaddis and Tim Lui Kwan put two "kamaaina witnesses," lifelong Ka'u residents William Meinecke and Louie Cruz, both in their 90s, on the witness

See Appeal, page 10

## Appeal planned over Ka'u case

Continued from page 1

stand during the week-long jury-waived trial last May to validate their claim of traditional use of the rights-of-way.

The suit focused on the historical and physical features of the Kawa Bay shoreline, situated between Honoupo and Punahoa in Hawaii's southern-most district.

Upheld in Kubota's ruling was the public's right to access to Kahaiki fishpond and the fresh water spring, Koeku heiau and ancient habitation sites, important for students of Hawaiian culture, the Kawa Bay surfing shoals, and other fishing, swimming, picnicking and camping areas.

Koeku heiau, constructed between the 13th and 15th centuries, was maintained by priests who performed human sacrifices and other ceremonies in honor of the god Ka. Other court testimony established the Kawa Bay vicinity as the home of several hundred Hawaiians in ancient times.

OCT 1980 HAWAIIAN TRIBUNE-HERALD

A-12 Honolulu Star-Bulletin Wednesday, October 22, 1980

## Judge Modifies Access Ruling on Big Island

HILO — Circuit Judge Ernest Kubota yesterday modified an earlier ruling in which he recognized traditional public access to the beach across private property in the Ka'u district.

In a judgment filed Oct. 14, Kubota ordered access to Kawa Bay and along the Ka'u shoreline by way of four trails on land owned by rancher Matsubei "Thomas" Okuna.

Kubota determined that the trails had been in continuous usage since pre-historic and early historic times.

Kubota made the modification, noting that his earlier decision has been appealed by Okuna, after a hearing, Kubota granted a stay of access by way of the "Corral Gate," and a partial stay concerning a second access point, by

AT YESTERDAY'S hearing Okuna expressed concern over possible damage to the windmill, which is near the "Corral Gate," that provides water for about 450 head of cattle.

The vanes of the windmill had been shot at in the past, and if the gears were damaged, the windmill could be shut down for a long time, interrupting pumping of water to his cattle, resulting in their deaths, Okuna testified.

Okuna also testified that public traffic across his land would create "terrible stress" on his cattle.

He said he is also concerned about the possibility of cattle rustling.

Further fencing of his property and 24-hour surveillance by a watchman would be too expen-





# University of Hawaii at Manoa

Hawaii Institute of Marine Biology  
P.O.Box 1346 • Coconut Island • Kaneohe, Hawaii 96744  
Cable Address: UNIHAW

September 28, 1976

To: Michio Takata, Director  
Division of Fish and Game

Eugene Kridler  
Endangered Species Coordinator  
U. S. Fish and Wildlife Service

Matt Dillon  
Senior Enforcement Agent  
U. S. Fish and Wildlife Service

From: George H. Balazs  
Jr. Marine Biologist

During a recent trip to the Island of Hawaii I was able to document and compile factual information on the successful nesting of a hawksbill turtle (Eretmochelys imbricata). In view of this species' "endangered" classification, I thought that it would be useful to your respective agencies to receive a summary report on this rare occurrence.

On July 4, August 1 and August 23 the tracks and excavations of a sea turtle were noted on a black volcanic sand beach situated three miles northwest of Cape Kumukahi, Hawaii. This relatively isolated strip of sand extends for only approximately 150 yards and is locally known as Orr's Beach. On September 23 and 24, I visited this beach as a guest of the adjacent residents (Mr. and Mrs. J. B. Orr) in order to inspect and evaluate the turtle excavation sites. Based on the locations and appearances, I tentatively concluded that only one excavation (August 23) had resulted in the successful deposition of eggs. Overlying sand at this site was carefully removed so as to barely expose the top of the clutch. The small diameter (approximately 1 3/8") of the eggs observed indicated to me that the genus involved was Eretmochelys rather than Chelonia (green turtle). Taking into consideration the temperature of the underlying sand, as well as the incubation times required for hawksbill clutches laid on a similar black sand beach (Punaluu) in 1974 and 1975, I estimate that hatchlings will emerge from the nest during the last week of October. During the ensuing weeks until emergence, Mr. and Mrs. Orr and other concerned residents intend to watch over the clutch in an effort to prevent



Memo to Michio Takata  
Eugene Kridler  
Matt Dillon

September 28, 1976  
Page 2

disturbance by either human or animal factors. As an additional safeguard against attracting adverse attention to the clutch, I have recommended that it would be best not to make a public announcement of this nesting occurrence at the present time.

I anticipate being on the Big Island during early November. Upon my return, I will provide your agencies with information on the outcome of the emergence.

GHB:md





ROYAL  
Mini Print

*PUNALUU VILLAGE RESTAURANT is nestled  
at the edge of a placid Hawaiian fresh water lo-  
goon surrounded by tropical gardens at PunaLuu  
Black Sands Beach, Hawaii.*  
B9748



HAWAIIAN SERIES

*Distributed by Master Supply of Hawaii, Honolulu*



## Hollywood comes to UHH

You may have been wondering what all the commotion has been over in the theatre scene shop lately. Well, our own UHH theatre crew has been involved in the making of a movie!

Larry Joseph, Theatre Manager and Technical Director, was contacted by Roger Holzberg, an Associate Producer out of Los Angeles, and asked to assist a movie company with set construction. Joseph saw this as an excellent opportunity for theatre students to receive practical education and experience in areas directly related to their fields of study. Holzberg (an ex-classmate of Jackie Johnson Debus at University of Colorado at Boulder) and the bulk of the production company arrived in Hilo within days of the phone conversation, and Joseph and his technical theatre students were immediately immersed in the behind the scenes efforts that go into the making of a Hollywood movie.

Joseph was appointed Hawaii Construction Coordinator for the set. The initial task assigned to his technical crew was the construction of three identical trailers (one for the principal actors, one for students and special effects, and one for interior shots). They were also asked to "rust-out" or age two identical cars, and to assist with some special effects.

Additionally, students have been utilized by the production company in other areas, including assistant make-up artist, head production assistant, production assistants, assistant properties masters, on-location construction crew, stand-ins, doubles, and office help.

The theatre students have been receiving practical education in areas of special effects, stage combat, and the coordination of location shooting for a feature film. They have also been given direct classroom exposure through

lectures by experts in special effects, stunts and properties.

Some of the movies these experts have been involved with include *Uncommon Valor*, *Apocalypse Now*, *The Sword and The Sorcerer*, *Raiders of the Lost Ark*, and both *Godfather* movies.

The movie currently being made is called *Radioactive Dreams*, a fast-paced story about two young men who, after spending 17 years in a bomb shelter, enter a bizarre post-nuclear world only to discover that everything they know is wrong. Producer Tom Karnowski and Director Albert Pynn, both graduates of Kailua High, collaborated in writing the script. The movie will be shot in part up on Saddle Road, then the crew will move back to Hollywood to finish up.

The assistance of the Theatre people proved to be crucial to the production company in terms of time and work quality, and reciprocally, the students received a valuable learning experience. □

## College of Ag Promotes Computer Literacy

Dr. W. Stephen Darron of the College of Agriculture has been awarded a grant valued at \$4,327 by the AgDisk Educational Foundation. The grant is in the form of agriculturally-related computer software.

Programs for recordkeeping, accounting, animal management, machine maintenance and profit projections are included in the 14 software packages covered in the grant.

This is just the most recent step by an Agricultural faculty member to further the College's efforts toward integrating computer usage into classroom instruction. The faculty's goal is computer literacy for all graduates of the College of Agriculture.

In 1983 the CA faculty revised its graduation requirements to include computer science. In addition, a new course in Computer Applications to Agriculture was offered for the first time this semester and will be a regular offering at the college.

The records of the Farm Laboratory enterprises are also being connected to a computer base to allow students and faculty greater experience in managing actual production units with the help of a computer. □

## Johnson Receives Hilo Rotary Club Award

Dorothy Johnson, a third year student at the University of Hawaii at Hilo's College of Arts and Sciences, majoring in mathematics with studies in computer science and physics, received the Hilo Rotary Club Award for Academic Excellence at the Hilo Rotary Club's January 20, 1984, luncheon. Michael Fujimoto, Chairman of the Vocational Committee for the Hilo Rotary Club, made the awards presentation.

Johnson, a high academic achiever, has consistently remained on the Dean's list at the University of Hawaii at Hilo, College of Arts and Sciences.

Johnson has worked on research projects studying the chemical composition of volcanic glasses from the Kahoolawe archaeological sites; as an archaeological research assistant submitted a paper entitled "Computer Methods in Archaeology;" and as a physical science aid at Mauna Loa Observatory for the National Oceanic & Atmosphere Administration became interested in atmospheric physics and plans to continue her education in this area after graduation. □



Dorothy Johnson

Johnson has also been involved with campus committees and activities as well as maintaining a full family life with her husband and two children. Johnson's husband is also a student at the UHH. □



# M.O.P. Update

The Hawaiian Green Sea Turtle is on the endangered species list and has been protected by both state and federal law since 1978. How are the turtles doing? Is their population growing or continuing to decline? Answers to these questions and others including turtle feeding behavior, growth rates, and sex ratios are being answered by a group of UH-Hilo Marine Option Program students in a project funded by the Sea Grant College Program.

The students are being trained and directed by George Balazs, internationally recognized sea turtle expert with the National Marine Fisheries Service and The Hawaii Institute of Marine Biology.

Two different techniques are used for catching turtles in the study. In one, a team of specially trained student SCUBA divers search for turtles sleeping in caves or holes just offshore. The turtles are carefully wrestled to the surface, pushed into a rubber boat and briefly taken ashore for measurement and study. The second technique involves catching the turtles at night in special turtle nets. There have been numerous weekend SCUBA diving expeditions since the beginning of fall semester and netting expeditions in December, January, and February, with more planned for March, April and May. The following account of the most recent netting expedition catches the spirit of the students' experience.

## M.O.P. Goes Turtling on the Big Island

By Nancy Bernard

The Turtle Project contingent of Hilo M.O.P. has just returned from a long weekend of tagging turtles at Punaluu, on the south side of the Big Island. Lucky for us (one again), we had beautiful weather. We keep hearing rumors about the cold strong winds that come tearing down off the slopes of Mauna Loa, but all we've seen so far are sunny clear days and calm, full moonlit nights. It's almost worth getting up to watch the turtle nets at 2:00 a.m. when you know there is a big beautiful full moon, swaying palm trees and a gently lapping sea. Of course, there is always the ever approaching reality that at any minute you might be forced to climb into soggy swim suits just to wrestle the 250 lb. turtle that is caught in the net.

But it's all good fun and very worth it, even after you look through the binoculars and spot the flippers flashing about in the moonlight. OH! OH! another turtle bites the net. So, you put down the binocs and turn to your buddy, "Should I wake up George or Chris this time?" knowing that George hasn't slept more than an hour all

night and Chris just got off watch at 3:00 a.m. Guiltily I run back to the pavillion and shake Chris awake, it's 3:30 a.m. "Hey, Chris, wake up, there's a BIG one in the net!" Chris looks at me in shock and disbelief. "You weren't supposed to check the net for another 10 minutes." Poor Chris, up again just so he can plunge into the icy cold water.

Meanwhile, back on the beach, the others are suiting up: two people to pull the turtle out of the net and one to hold the light. Chris comes back half asleep and the three of us swim out to the net, and to our surprise we discover a second turtle stuck in the net. Wow! that makes six turtles caught tonight. After forty-five minutes both turtles are on the beach lying on their backs next to the other caught turtles. There they rest for the duration of the night, all in a line like beach chairs on the French Riviera, waiting to be tagged, measured, and weighed.

Morning arrives. The breakfast crew prepares pancakes, fruit, cereal, coffee, and hot chocolate. One grinds! Hilo M.O.P. is really getting the gourmet food prep down to a science, no one starves at the Punaluu Pavillion Diner. Head chef Leon Hallacher really out-did himself this time: Tacos for dinner, salmon and sandwiches for lunch, and French toast for breakfast.

After breakfast, the half-awake group gathers on the beach to (as George puts it) "process" the turtles who are calmly sunbathing on their backs. The sun is already up and the turtles are starting to look kinda hot. Diane pours water on their bellies to cool them off, and picks off parasitic turtle barnacles. Every inch of their turtle bodies are measured, then they're tagged and weighed and finally blood samples are taken so that their sex can be determined. And then the moment we've all been waiting for: freedom! The turtles are turned over on their stomachs with their heads pointed towards the sparkling sea. On little flippers they charge to the water and fly through the surf, freedom at last.

Turtles work at night so the daylight hours are mostly spent sunning on lounge chairs and picnic tables or sleeping in steaming hot vans. We all rest waiting for the two-hour night shifts. Two days of turtling can really be exhausting but it's always challenging and it's always fun. As the end of the weekend approaches we all prepare to leave. The nets are taken out of the water and then the long process of untangling the knots begins. Six big turtles trapped in a net can really twist things up. After three hours of untangling and mending, the gear is packed up in various vans and cars and we're off! Another exciting weekend of turtling has come to an end. □

# campus corner

Dr. Donald A. Wells, Emeritus Professor of Philosophy, College of Arts and Sciences, University of Hawaii at Hilo, has just published a new book, War Crimes and Laws of War, by the University Press of America. This is his second volume on the subject of war. His earlier book, The War Myth, was published by Bobbs-Merrill in 1967.



Professor Wells

The starting point for the present book is the war crimes trials held both at Nuremberg and Tokyo and later in "occupied" countries following World War II. These Trials prosecuted Germans and Japanese for three offenses: 1) war crimes, 2) crimes against humanity, and 3) crimes against the peace. The major arena for both war crimes and crimes against humanity were the extermination camps and the prisoner of war camps. The victims were either soldiers who had surrendered or civilians. The crimes against the peace were based on the premise that "aggressive war" was an offense.

The major argument of the Nuremberg prosecutors was that those who were charged had committed "excessive" slaughter, that the slaughter had not been militarily necessary, and that they had ignored the traditional combatant - non-combatant distinction. They appealed to the declarations of the Hague and Geneva Congresses, all of which had forbidden attacks on either prisoners of war or civilians. At the time of the Trials the Allies had disagreed over whether there existed adequate grounds for having the Trials at all. War, after all, was a sovereign right of nation states, so how could there be anything criminal about killing in wartime? The fact was that no German or Japanese was prosecuted for deeds committed against soldiers or civilians on the conventional battlefield. They could all be shot, stabbed, napalmed, gassed, poisoned, or bombed indiscriminately from the air. The only protections were for those imprisoned.



The book raises the question: "Could a new war crimes trial be instituted?" Surely as we look around the world we read of excessive offenses against civilians. It was considered "excessive" in World War II to have killed twice as many civilians as soldiers; and it was considered "excessive" that the Americans killed ten times as many Vietnamese civilians as Vietnamese soldiers. Current wars appear to target civilians primarily.

Several factors make it unlikely that we will ever repeat the drama of a war crimes trial. In the first place, the development of weapons of war, most of which are hopelessly indiscriminate, obligate soldiers in all armies to commit the precise crimes with which the Germans and Japanese were charged. It is not merely that nuclear weapons are basically anti-civilian weapons, but that napalm, fragmentation bombs, biological/chemical weapons, and conventional cannon are all designed to kill indiscriminately.

## CAS SENATE ACTS

On February 21, the CAS Senate approved the following sentiment on the existing student tuition schedule: "The Senate of the College of Arts and Sciences concurs with the Faculty Senate of Hawaii Community College that more rational and reasonable approach to establishing student tuition fees at the University of Hawaii is represented by the former policy providing for a common tuition schedule for Community College students and lower-division College of Arts and Sciences students."

The Senate also approved a change in the existing statement of the policy on double majors under the B.A. degree. The existing statement reads: "In a double major, a candidate may present a maximum for six semester credits of

Modern strategies of war are directed chiefly against cities, and that is where civilians are. In the second place, the primary evidence against the Germans and Japanese was that they had initiated the war. They were the aggressors. But contemporary military strategy calls for "first strike" offense, and this is precisely what being an aggressor traditionally meant. The military argument has been that modern weapons do not allow a notion to wait to respond. But this simply means that there is no longer any offense with being the aggressor. Combine these facts with the virtual abandonment of the combatant - non-combatant distinction, and we now find ourselves, and all nations are in the same position, with armies trained to be war criminals in the Nuremberg and Tokyo Trials sense. The task of this book is to identify the problem and to suggest some resolutions.

Dr. Wells' new book is available on the campus at the College Bookstore.

crosslisted courses toward the completion of the requirements for each major." The recommended statement to replace the existing statement is as follows: "Students may pursue and earn more than one academic major, provided the requirements for each major are satisfied. In the case of majors that require identical courses, no more than six semester hours of such courses may be counted as fulfilling the unit requirements of each major."

In other actions, the Senate recommended approval of 2 new courses: SOC 325 (Sociology of Disaster) and SOC 355 (Sociology of Religion).

All Senate actions were sent to CAS Dean Charles N. Fullerton for his review.

## UHH Council Guidelines on Academic Minors

At the February meeting of the UHH Council the following broad guidelines regarding academic minors for the University of Hawaii at Hilo were adopted. They are:

1. UHH shall offer academic minors.
2. The number of hours required for a minor shall be a minimum of 15 and a maximum of 24.
3. The student must maintain a grade point average in the minor equivalent to that required for a major in the same area.
4. The completion of a minor is to be reflected on the student's permanent record card.
5. Course requirements for a minor will be at the discretion of the appropriate academic unit.

# glimpses

**Public Forum Discussing Scientific Work of NASA and Mauna Loa Solar Observatory.** Scientists from NASA Space Flight Centers and the Mauna Loa Solar Observatory will present a public forum at the UHH Theatre, March 23, at 7:30 p.m. This forum, sponsored by the Scientific Coordinating Committee for the Pacific, the University of Hawaii at Hilo and Sigma Xi, will help inform the scientists and general public of the scientific work of NASA and the Mauna Loa Solar Observatory. Of special interest will be the report of plans to attempt the capture and repair of a satellite used to provide information to the Mauna Loa Solar Observatory. The faculty, students and staff at UHH as well as the public are invited to attend.

**A Garage Sale, sponsored by the Future Secretaries Association, will be held at HCC Student Government Lounge on March 17, 1984 from 8:00 a.m. to 1:00 p.m. Any donations of unwanted or unnecessary items will be appreciated. This is your chance to get rid of any items you just have no use for.**

Items can be: Books, Clothing, Crafts, Odds and End, Etc.

Collection and Storage of Items:

Location: Student Health Center Bldg. 380--BCC Campus

Dropoff Hours: MWF 8:30-9:20 a.m.  
12:30-1:20 p.m.  
TTh 10:30-11:20 a.m.

Collection of donations will start from February 27 on through March 14. Your kokua will be greatly appreciated.

**Tutorials in VISICALC.** The Learning Lab has a tutor who specializes in teaching faculty and students in the use of Visicalc (electronic spreadsheet program for microcomputers). Faculty members are invited to visit the lab for an orientation to Visicalc.

**New Student Health Services Schedule in Room 212, OSS Bldg.:**

MWF 8:00 a.m.--12 Noon  
Th 1:00 p.m.--2:00 p.m.

Tu 12:30 p.m.--3:30 p.m.  
HCC-Room 379-6

3:30 p.m.--4:30 p.m.  
Hale Aloha

Th 2:00 p.m.--3:00 p.m.  
Hale Kauanoa

3:00 p.m.--4:00 p.m.  
Hale Ikena

4:00 p.m.--5:00 p.m.  
Hale Kanilehua

Services include: First aid, injury, health conference.



**Honolulu Symphony coming soon!**

See March 31 issue

Tuberculin skin test available at Student Health Center, Room 212, OSS Bldg. ONLY. Call 961-9509 or 961-9399.



## Bunka No Izumi

Bunka No Izumi will feature Dr. George Akita who will speak on "The Status and Role of Women in Japanese History" on Sunday, March 18, 1984 at the University of Hawaii at Hilo Campus Center, Room 306-7 at 2:00 p.m. The public is invited to this program.

Dr. Akita feels that from the perspective of Japanese history and when compared to women of Western Europe and China, the status and role of women in Japan have not been low or subservient.

Currently, a professor of history at the University of Hawaii at Manoa, Dr. Akita, who is reputed to be the protege of Harvard's Dr. Edwin Reischauer, former U.S.

ambassador to Japan, has earned his B.A. from the University of Hawaii at Manoa and the M.A. and Ph.D. at Harvard University. His previous positions include being a research analyst in Tokyo and the Director of the Asian Studies Program on the Manoa campus. He has authored three books, the major one is Foundations of Constitutional Government in Modern Japan, 1868-1900 by the Harvard University Press. He has also written numerous professional articles. He is also active in the Fulbright-Hays Faculty Research Abroad Committee and the Japan Foundation and other educational associations. □

## athletic update

By Lance Green

**basketball** The Vulcan basketball team ended its season recently with a loss to BYU-H in the first round of the Hawaii Conference Play-offs. Their loss eliminated any hopes of travelling to Kansas City for the NAIA National Tournament. Overall, the Vulcans finished with a 19-13 record. In NAIA play they were 19-10 and in Hawaii Conference play they played at .500 with a 5-5 record.

Individual leaders for this year's team included John Q. Jones, Bob Warden, Rene Sanchez, Andy Ground, and George Schnackenberg. Jones was the leading scorer (averaging 15.6 points per game), the leading rebounder (7.4 per game), and ranked in the top three in field goal percentage (.542) for the team. Sanchez led the team in steals (58), had a 10.8 scoring average, and made .76 percent of his free throws. Warden led the team in assists (112) and averaged 13 points per game. Ground and Schnackenberg contributed with double figure scoring averages, 11.4 and 10.4, respectively.



John Q. Jones

Highlights of the season included George Schnackenberg's game against Meiji University when

he scored 30 points and had 11 rebounds. Other big game performances included John Q. Jones, 35 points against Hawaii Pacific College, his 14 rebounds against Santa Fe. Rene Sanchez set the team record in assists for a game during the season with 10 against HPC.

The Vulcans will return the entire team for next year's campaign. With 7 seniors and 5 sophomores for next year, the outlook is promising. In addition to All Conference Selection John Q. Jones, the experience of the past year will prove invaluable.

**baseball** The UHH baseball team improved its record to 8-4 overall with a four game sweep of HPC over the March 3-4 weekend. The victories put their NAIA record at 4-0 with notable wins over NCAA Division I UH-Manoa and Portland State University.

Leading the Vulcans offensive attack during the series with HPC were Guy Oshiro (6-15), Gordon Muramaru (5-10), Vince Bedoya, Richard Toledo, and Chad Saki. While Bedoya, Toledo and Saki each honored, Oshiro hit a cool .400 for the series as Muramaru paced the attack at a .500 clip.

The pitching staff was achieved with solid performances by Joey Vierra, who had a 2 hitter in game 2, and Joe Arakaki, who went the distance in game 4. Also throwing well were Herb Kasihue, Sherman Santos, Russell Ijima, and Horace Gray, who contributed efforts to win games 1 and 3.

While the wins did not come easily, they served as a good prime for subsequent series with Liberty Baptist College and the University of Nebraska. The Vulcans face Concordia College of Oregon before they travel again to Oahu to participate in the Rainbow Easter Tournament. There, they will face the team that prevented them from gaining a berth at last year's NAIA National Tournament. Lewis and Clark State of Idaho will be their first opponent with games versus UH-Manoa and Waseda of Japan to follow. □

## Textbook Orders Due

Textbook orders for Summer Session 1984. Deadline for Summer Session orders is March 16, 1984. Textbook order forms are available through your Division Secretary. Please TYPE all forms and submit them to your Division Secretary. Reminder: Be sure to include ISBN numbers!

Textbook orders for Fall 1984 Deadline for Fall orders is May 1, 1984.

## Caps and Gowns for Faculty

Graduation is scheduled for May 11, 1984 (7:00 p.m.) at the Civic Auditorium. Faculty members who are interested in obtaining a cap, gown or hood for the ceremonies may place their orders for rental/purchase at the Bookstore from March 5-16, 1984. Prices are as follows:

Bachelor's cap & gown rental	\$5.00
Acetate Master's cap & gown purchase	\$17.85
Acetate Ph.D.'s cap & gown purchase	\$23.60
Acetate Master's hood purchase	\$17.85
Acetate Ph.D.'s hood purchase	\$23.60

Samples of the above items can be seen at the Bookstore. Please don't be late! Orders will NOT be accepted after March 16, 1984 due to transit time.

**Imua Hilo** is a semi-monthly publication, except during vacation periods, of the University of Hawaii at Hilo. **Imua Hilo** is published concurrently with each payday of the University. Items for consideration should be submitted one week prior to each pay date to the Office of the Vice-Chancellor, Administration Building, room 110. For details or questions, call 961-9567. Accompanying photographs are encouraged. **Imua Hilo** is published by the Office of the Vice-Chancellor and produced by the Media Services department at the University of Hawaii at Hilo. **Imua Hilo** is distributed at no charge to all UHH faculty and staff, and to friends of the University.



RECORD OF DIVE

Date: *Sunday, 25th Mar. 1984*  
 Max. Depth of Dive *45'* Bottom Time *:52*  
 Performed for *Turtle Reef*  
 (Customer Company)

Vessel *Zed Boat*  
 Geographic Location *Paranalak, Hawaii*  
 Time of Day *11:7:17* *cont: 809*  
 Equipment Used: Deep Sea Mask Scuba  
 Bell Other  
 Breathing Medium: Air Helium/Oxygen

Work Description  
*Caught 1 turtle - @ 30m (w)  
 Saw: 5 w/a - 2 med, 3 small  
 10 surface - 4 lg, 2 med, 4 sm.*

Remarks (Decom. Table Used)  
 (Include any unusual aspects of dive or incidence of decompression sickness)  
*No Dec Limits - 1st Dive  
 Lt. Dec. - H SI - 2:106  
 New Lt. Dec. - E*

Approved  
 Diver *Louise Korch*  
 Diving Supervisor *BOB TAYLOR - CRAIG HARBLE*  
 Company

RECORD OF DIVE

Date: *25th Mar. '84*  
 Max. Depth of Dive *40'* Bottom Time *:40*  
 Performed for *Turtle Reef*  
 (Customer Company)

Vessel *Zed Boat*  
 Geographic Location *Paranalak, Hi.*  
 Time of Day *11:10:15* *cont: 10:55*  
 Equipment Used: Deep Sea Mask Scuba  
 Bell Other  
 Breathing Medium: Air Helium/Oxygen

Work Description  
*Caught 1 turtle - @ 30m (w)  
 Saw: 8 w/a - 4 large, 2 med, 2 small.  
 6 surface - 1 lg, 3 med, 2 sm.*

Remarks (Decom. Table Used)  
 (Include any unusual aspects of dive or incidence of decompression sickness)  
*No Dec Limits - Repeat. 2nd Dive  
 L.D. - I SI - 4:108  
 NLD - C*

Approved  
 Diver *Louise Korch, Barbara (1st Dive)*  
 Diving Supervisor *BOB TAYLOR - CRAIG HARBLE*  
 Company



RECORD OF DIVE

Date: 25th Mar. 1984  
 Max. Depth of Dive: 40' Bottom Time: :40  
 Performed for: Turtle Prozer  
 (Customer Company)

Vessel: ZED BOAT  
 Geographic Location: Punalu'u, Hi.  
 Time of Day: 11:30 AM out: 3:43  
 Equipment Used: Deep Sea Mask Scuba  
 Bell Other  
 Breathing Medium: Air Helium/Oxygen

Work Description

Count 2 turtles - 1 D 35 cm, 1 @ 88 cm (w)  
 spaw: 3 w/w - 2 lg. (1 was male) 1 small  
 @ surface

Remarks (Decom. Table Used)  
 (Include any unusual aspects of dive or incidence of decompression sickness)

No Deco Limits. Report. 3ED Dive  
 LD - G

Approved

Diver: Louise, Karch, Bernado (ZED Dive)  
 Diving Supervisor: Tandy - Camp, Howell  
 Company:

RECORD OF DIVE

Date: Mon. 26th Mar. 1984  
 Max. Depth of Dive: 35' Bottom Time: :35  
 Performed for: Turtle Prozer  
 (Customer Company)

Vessel: ZED BOAT  
 Geographic Location: Punalu'u, Hi.  
 Time of Day: 10:58 AM out: 8:35  
 Equipment Used: Deep Sea Mask Scuba  
 Bell Other  
 Breathing Medium: Air Helium/Oxygen

Work Description

No turtles caught  
 spaw: 1 w/w - small  
 2 surface - small

Remarks (Decom. Table Used)  
 (Include any unusual aspects of dive or incidence of decompression sickness)

No Deco Limits 1st Dive  
 LD - D 52-4:45  
 NLD - B

Approved

Diver: Louise, Bernado, Karch  
 Diving Supervisor: Tandy - Hindle  
 Company:



RECORD OF DIVE

Date: 26<sup>th</sup> Mar. '84  
 Max. Depth of Dive: 45' Bottom Time: 40  
 Performed for: Turtle Project  
 (Customer Company)  
 Vessel: Zed Boat  
 Geographic Location: "Turtle Bay" - Pinnacles, HI.  
 Time of Day: IN: 1:20 OUT: 2:00  
 Equipment Used: Deep Sea Mask Scuba  
 Bell Other  
 Breathing Medium: Air Helium/Oxygen

Work Description

No turtles caught  
 Saw: 2 w/w - med.  
 3 surface - 2 small, 1 med.

Remarks (Decom. Table Used)

(Include any unusual aspects of dive or incidence of decompression sickness)

No Deco Sickness  
 Led. Dis. - Co. 200 Dive

Approved

Diver: Lambie, Kovan  
 Diving Supervisor: Tander - Hinkle Bay  
 Company:

RECORD OF DIVE

Date: Tues. 27<sup>th</sup> Mar. '84  
 Max. Depth of Dive: 45' Bottom Time: 53  
 Performed for: Turtle Project  
 (Customer Company)  
 Vessel: Zed Boat  
 Geographic Location: "Turtle Bay" - Pinnacles, HI.  
 Time of Day: IN: 9:22 OUT: 9:15  
 Equipment Used: Deep Sea Mask Scuba  
 Bell Other  
 Breathing Medium: Air Helium/Oxygen

Work Description

Caught 1 turtle: @ 50 im (W)  
 Saw: 1 w/w - small  
 2 surf - small

Remarks (Decom. Table Used)

(Include any unusual aspects of dive or incidence of decompression sickness)

No Deco Sickness  
 Led. Dis. - H  
 NLD - C 120 Dive  
 SI - 3:30

Approved

Diver: Baker, Lambie, Kovan  
 Diving Supervisor: Tander - Magenta's Diver  
 Company:



RECORD OF DIVE

Date: 27<sup>th</sup> Mar. 84  
Max. Depth of Dive: 40' Bottom Time: 1:40  
Performed for: Three Pearls (Customer Company)

Vessel: ZED BOAT  
Geographic Location: Palawan, Hk  
Time of Day: 11:12-1:45 Out: 1:25  
Equipment Used: Deep Sea Mask Scuba  
Breathing Medium: Air Other Helium/Oxygen

Work Description

Checked 2 turtles - 1 @ 35' em (w)  
1 @ 80' em (w)  
Saw: 1/4 10 - 30g 2 med. 2 sm. (+ 8, 45, #2)  
surface to - 31g 1 med. 2 sm.

Remarks (Decom. Table Used)

(Include any unusual aspects of dive or incidence of decompression sickness)  
No Decom Limits.  
LD - 14  
ZED Dive

Approved

Diver: Brian Leber, Rowlin  
Diving Supervisor: James - Davao Davao  
Company:

RECORD OF DIVE

Date: Fri. 30<sup>th</sup> Mar. 84  
Max. Depth of Dive: 50' Bottom Time: 1:50  
Performed for: Three Pearls (Customer Company)

Vessel: ZED BOAT  
Geographic Location: Malapascua Resort, Koroa, Hk  
Time of Day: 11:10-1:45 Out: 11:35  
Equipment Used: Deep Sea Mask Scuba  
Breathing Medium: Air Other Helium/Oxygen

Work Description

Saw: 1/4 w - 5 small turtles.

Remarks (Decom. Table Used)

(Include any unusual aspects of dive or incidence of decompression sickness)  
No Decom Limits.  
LD - 9  
NLD - C  
SI - 3:55  
ZED Dive

Approved

Diver: LARRY BARR  
Diving Supervisor:  
Company:



RECORD OF DIVE

Date: 30th March 1984  
Max. Depth of Dive: 150 Bottom Time: 3:50  
Performed for: Turtle Project (Customer Company)  
Vessel: Zed Boat  
Geographic Location: Manzanillo Resort, Kona, HI  
Time of Day: IN: 3:30 OUT: 4:20  
Equipment Used: Deep Sea Mask Scuba  
Breathing Medium: Air Other Helium/Oxygen

Work Description

Saw 8 turtles - 4/5 all small

Remarks (Decom. Table Used)

(Include any unusual aspects of dive or incidence of decompression sickness)

No Decom Limits ZED DIVE

LD - J

Approved

Diver LAUBE, BARAZ

Diving Supervisor

Company

RECORD OF DIVE

Date: SAT. 31st March '84  
Max. Depth of Dive: 45' Bottom Time: 1:40  
Performed for: Turtle Project (Customer Company)  
Vessel: ZED BOAT  
Geographic Location: HAROLI'1, HILO, HI  
Time of Day: IN: 10:45 OUT: 11:25  
Equipment Used: Deep Sea Mask Scuba  
Breathing Medium: Air Other Helium/Oxygen

Work Description

Caught 2 turtles - 1 @ 35 cm (w)

1 @ 50 cm (w)

WENT SEED ON SURFACE

Remarks (Decom. Table Used)

(Include any unusual aspects of dive or incidence of decompression sickness)

No Decom Limits / 25 DIVE

LD - F ST - 1:25

NLD - F

Approved

Diver BARAZ, LAUBE, KANEHI

Diving Supervisor

Company



RECORD OF DIVE

Date: 3/21 March 1984  
 Max. Depth of Dive: 55' Bottom Time: 1:24  
 Performed for: Turtle Project (Customer Company)  
 Vessel: Zed Boat  
 Geographic Location: Horsli's Hole H.  
 Time of Day: 11:50 AM - 12:23  
 Equipment Used: Deep Sea Mask (Scuba)  
 Bell: Other  
 Breathing Medium: Air Helium/Oxygen

Work Description

NO TURTLES CAUGHT OR SEEN

Remarks (Decom. Table Used)

(Include any unusual aspects of dive or incidence of decompression sickness)

No Decom Limits. 200 Dive  
LD - J

Approved

Diver: BMAZ, LAURE, KACAN  
 Diving Supervisor:  
 Company:

RECORD OF DIVE

Date:  
 Max. Depth of Dive: Bottom Time:  
 Performed for: (Customer Company)  
 Vessel:  
 Geographic Location:  
 Time of Day:  
 Equipment Used: Deep Sea Mask Scuba  
 Bell: Other  
 Breathing Medium: Air Helium/Oxygen

Work Description

Remarks (Decom. Table Used)

(Include any unusual aspects of dive or incidence of decompression sickness)

Approved

Diver:  
 Diving Supervisor:  
 Company:



slightly forms  
& letter sent  
5-14-82

P.O. Box 156  
Pahala, Hawaii 96777  
April 20, 1982

Dear Dr. Balazs,

Thank you for the sea turtle poster.  
It is really nice. I gave it to my father  
who is our marine science teacher and  
I'm sure he will make good use of it. The  
postcards were nice too. Thank you for  
them as well.

I had a good time talking with you at  
lunch on Saturday. Even though it wasn't my  
topic, it was very interesting and I enjoyed  
it.

So thanks again for everything and good  
luck in your work.

Sincerely,

Andrew Srenolu



Hiroshi Ariga  
65 Hihuhilu St.  
Hilo HI. 96720

Aug 10th '84

Dear George,

How are you and your family?  
And how was the turtle expo in French  
frigate shore + Punaluu.

My vacation in the mainland was  
so great. I ended up taking summer course  
in Oregon State Univ. in Corvallis. I took field  
study of bioecology of Oregon (S.W. America), basic white water  
rafting and shark fishing exp. I cut 3 salmon instead of  
dog fish or blue shark in Newport, OR. I kept one salmon but  
it feed 10 of us for salmon stakes dinner. My old high school  
buddy is going to O.S.U. for engineering. We went to Seoul  
international school in Korea in '78. I moved to Seoul in '76  
with my folks. My father was working for Japanese chamber  
of commerce in Seoul. I had to adjust myself into Korean society  
and American school at same time. Well, it was fun to graduate  
with 13 of us among 8 different nationalities. It was seven years  
ago + it is very hard for us to keep contact each other. I lost  
two of my class mate so far.



Peter blew his head off with gun + Zivan got killed in folk island. I really needed to spend some time with my old friend. It was great to have buddy from past and to have class reunion. I really needed for the fun and get together with boys for serious parties Huh!

By the way, I'm back to normal again. And I'm looking forward to revenge from T.K.O. (Turtle knock out) + B.A.T.B. (bad as turtle bite). I'd love to hang around w/ punaluu Turtle again. If you are planning to have turtle expo again on big island, please let me know. I'm gonna be a bad mean turtle diver. huh. They gonna have to get it this time. Anyway, did you get those copies of turtle project from Pee? She is still in N.Y. now. ~~and I haven't found~~ out Well, I hope I'll see you soon.

Aloha  
Ariga

P.S. I found your weight belt in my dive eq. container.



A memo from...  
Diane Mazarakis



1-8-85

Hi. GEORGE,

WHAT? I DON'T UNDERSTAND THE  
SENTENCING. \$750<sup>00</sup> suspended & unsupervised  
probation?

WHAT DOES THAT MEAN \$250<sup>00</sup> FINE.

I THINK A \$1000<sup>00</sup> FINE WOULD MAKE THEM STOP  
A \$250<sup>00</sup> FINE WOULD MAKE THEM MAD.

A THOUSAND DOLLARS COULD BE CONSIDERED  
UNDO FINANCIAL HARSHIP.

BUT THE LOSS IN RESEARCH DOLLARS  
COULD TRIPLE THAT.

② CAN'T WAIT TO FIND OUT OUR FIRST TURTLE  
DATE.

WE'LL BE WORKING W/ THE MARINE MAMMAL  
PEOPLE DURING JAN + FEB. TOO.

BUT YOUR PROJECT RECEIVES PRIORITY.

③ ALSO I'M PLANNING ON SOME  
DRAWN FEEDING TRIALS SOON FOR A



CLASS; your literature certainly came in handy.

Some day soon, I'd like to bat around a few things w/ you re: prawn culture, feeding trials, + your vast experience 😊

Hope to hear from you soon.

Diane



A memo from ...  
Diane Mazarakis



Oct 18  
1985

Hi George

Re: Sumidas

-proprietor

I spoke w/ Massa Sumida 961-3848

Oct. 18 -

He's the only person left who would remember 764 # turtle.

- The used to buy turtle meat from Mexico until banned, the leather back meat was indistinguishable from that Mexico meat.

- "It was okay, edible. You can eat anything, like rattle snake for example"

- It was massive,  $\therefore$  all the internal organs were scooped out + not looked at at all put in a garbage pail + removed from premises. Couldn't tell one organ from another.

Re: Sawing "shell" or bones

- ... leather backs have plates + fatty tissue  
∴ as it disintegrates, plates fall apart + no can save".

They thought about saving but the taxidermist said no can so they took it to the City dump.

~~etc.~~

- Didn't make soup but used it for cutlets (like veal) + people bought it. Was hard to distinguish from cattle.

Edible.

"Just edible?" says Diane

"Good, if prepared right as cutlets."

- No old photos only the article in paper



Re: Saving "shell" or bones

- ∴ leather backs have plates + fatty tissue  
∴ as it disintegrates, plates fall apart + no can save".

They thought about saving but the taxidermist said no can so they took it to the City dump.

~~It~~

- Didn't make soup but used it for cutlets (like veal) + people bought it. Was hard to distinguish from cattle.

Edible.

"Just edible?" says Diane

"Good, if prepared right as cutlets."

- No old photos only the article in paper

A memo from ...  
Diane Mazarakis



Oct 12,

Hi George,

① Can I include the letter

John Orr sent you in my  
bi monthly report to Maria?

② Thanks for the info tidbits, very  
interesting.

③ Petition

P.S. As per letter to Walter  
we are checking out  
volunteers - will advise  
soon.

(Dm)



A memo from ...  
Diane Mazarakis



②

Massa Sumida remember the  
turtle quite well.

Here's some petitions.  
I'll hold on to the other  
pages - 'til you tell me  
paw.

Hope to hear from you soon,

D.

A note from ...  
Diane Mazarakis



1-31-85

Hi George

1. Hope to see you at the  
Symposium. Loretta will present  
our part in the Turtle Project;

3-2-1 Contact Video + guest/ans.

Enclosed is the abstract. Hope it's okay, and I  
broke no rules.

2. I know you are very busy  
now-a-days yet, please keep an ear  
open for summer opportunities for someone who  
just graduated w/ a B.S. in Trop. Crop Prod.;  
a minor + practical experience in aquaculture; has  
experience on various research projects; publ. a  
few papers; wrote a few (2) proposals (pending);  
You guessed it. ME!

Not that I'm unsure of which direction,  
what path, or what I'll do next...

Just want to be aware of the options.

Thanks.



Hope to hear from you w/ a  
date.

Oh.

Punaluu water is flat!

Guy's pounding opihī on the  
outside reef in ankle deep water.

! !

D

UHH MOP/NMFS Green Sea Turtle Study

Loretta Mazarakis  
University of Hawaii at Hilo  
Marine Option Program

A highly productive foraging habitat for both immature and adult green sea turtles, Chelonia mydas, was targeted along the coast of the Ka'u District on the island of Hawaii. These rich algal pastures at the extreme southeastern end of the archipelago have produced the most rapid growth rates of the Hawaiian green sea turtle population thus far recorded (Balazs 1979,1982). The principal food source used by the turtles is believed to be Pterocladia capillacea, a red alga that thrives along lava rock coastlines where fresh water percolates into the ocean. The reasons for the high rates of growth in the foraging pastures of the Ka'u District are not known, although the submarine discharge of ground water may very well supply elevated levels of nutrients that promotes algal growth.

From September 1983 to July 1984, the University of Hawaii at Hilo Marine Option Program, in conjunction with the National Marine Fisheries Service, captured and tagged green sea turtles in order to study the accelerated growth of the turtles in this area. Techniques and materials used for capture, tagging, and measurement are discussed.



Summary of green turtles, *Chelonia mydas*, tagged and resighted at Punaluu Bay, Kau, Island of Hawaii, during the National Marine Fisheries Service and Marine Options Program Sea turtle research project.

compiled by  
George H. Balazs  
Honolulu Laboratory  
Southwest Fisheries Science Center  
2570 Dole Street  
Honolulu, HI 96822-2396

study dates	Total no. captured	No. newly tagged	No. tag resightings	Total no. tagged to date	Peterson population index estimate*
5/77	3	3	0	3	-
1/78	8	8	0	11	-
8/78	10	10	0	21	-
7/81	7	7	0	28	-
11/83	3	3	0	31	-
12/83	12	10	2	41	186
1/84	13	9	4	50	133
2/84	12	10	2	60	300
3/84	30	20	10	80	180
4/84	3	2	1	82	240
5/84	11	7	4	89	225
6/84	13	8	5	97	231
3/87	7	5	2	102	340
3/88	3	3	0	105	-
4/89	14	11	3	116	490
4/90	12	8	4	124	348
7/90	12	5	7	129	213
11/90	17	5	12	134	183
4/91	20	4	16	138	168

$$\frac{\text{*No. tagged turtles resighted}}{\text{Total No. turtles captured}} = \frac{\text{Total No. turtles tagged}}{\text{Total No. turtles in resident population (X)}}$$

Note: Tagged turtle 7723-24 found dead with throat cut at Punaluu 11/4/84. Originally tagged 5/15/84 at Punaluu. Another turtle, tag numbers unknown, documented as being killed at Punaluu on 7/16/84.

LIBRARY OF  
GEORGE H. BALAZS

October 25, 1983

F/SWC2:GHB

TO: William G. Gilmartin, Leader, MMSI

FROM: George H. Balazs

SUBJECT: Recovery of a tagged adult green turtle found dead with gunshot wounds at South Point, Island of Hawaii

A letter received this week reported the finding of an adult green turtle washed ashore at South Point with a "bullet shot" in the head and another in the neck. The letter stated that the turtle was found in July and that two metal tags were present on the flippers. The tags were removed, and sent with the letter. Tag numbers (5485 and 5487) revealed that I had tagged this turtle at Kaualu Bay on the Island of Hawaii on July 23, 1981, at 0400, in a net set within the bay. At that time the turtle was recorded as a small adult female.

It is not uncommon to hear about cases of Hawaiian turtles being shot, or shot at. This activity represents one more reason, in my view, why the French Frigate Shoals breeding colony is showing such slow recovery. Increased public awareness through education, as well as greater enforcement effort, would undoubtedly be of benefit.

bc: Balazs ✓  
HL

GHB:ihf



LIBRARY OF  
GEORGE H. BALAZS

November 30, 1984

F/SWC2:GHB

Dr. and Mrs. William H. Craig  
5002 Hawk Nest  
San Antonio, TX 78250

Dear Dr. and Mrs. Craig:

Thank you for your letter of November 4, 1984 reporting our tagged turtle No. 7723 found dead at Ninole Cove with its throat cut. This sea turtle, Chelonia mydas, a green turtle, was originally tagged on May 15, 1984, just a short distance away at Punaluu. Two tags were placed on the animal, No. 7723 and No. 7724. The tagging was part of a cooperative study by our Laboratory and University of Hawaii Sea Grant Program. A full description of this research is given in the literature that I mailed to you separately about 2 weeks ago.

It would be helpful and certainly appreciated, if some additional information could be provided on your observation.

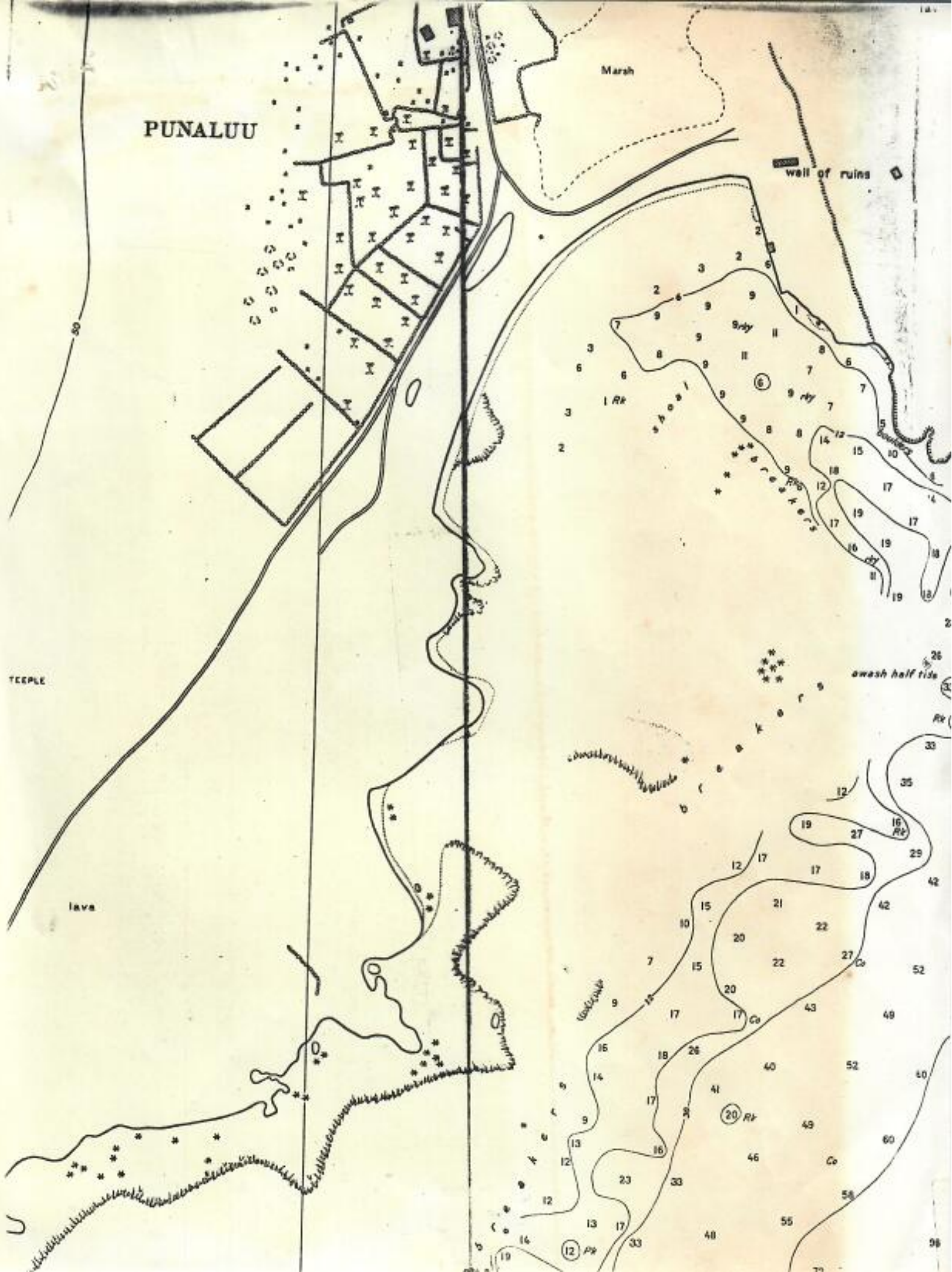
1. Did the cut on the throat appear to have been made with a knife? Was it a fresh cut? Approximately how deep?
2. Was the turtle far enough away from the water to exclude the possibility that waves washed it up? A turtle of this small size would almost never come out of the water on its own, at least in that area of the Hawaiian Islands.
3. Did you take photographs of the turtle? If so, copies for our viewing would be appreciated.
4. Was the tag that you saw removed from the turtle, or left on the carcass? Incidentally, both tags were originally placed on the front flippers--No. 7723 on the right, and No. 7724 on the left.

Your report of this incident represents a valuable addition to our research records. Again, thank you very much for taking the time to write. I look forward to hearing from you again at your convenience.

Sincerely,

George H. Balazs  
Wildlife Biologist

# PUNALUU



Marsh

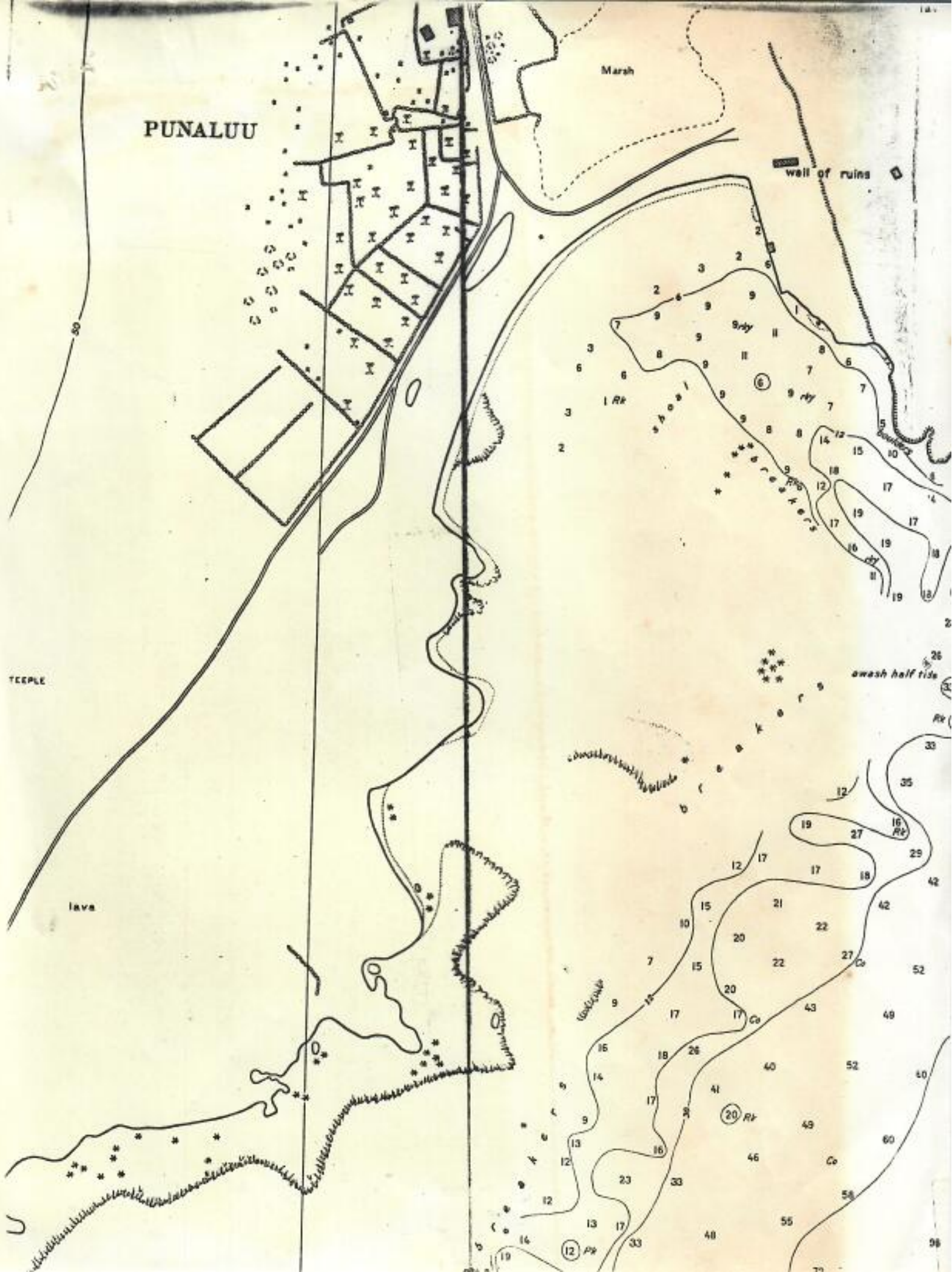
wall of ruins

TEEPLE

lava

swash half tide

# PUNALUU



Marsh

wall of ruins

TEEPLE

lava

swash half tide



Marsh

wall of ruins

9th

1st

awash half tide

Rv

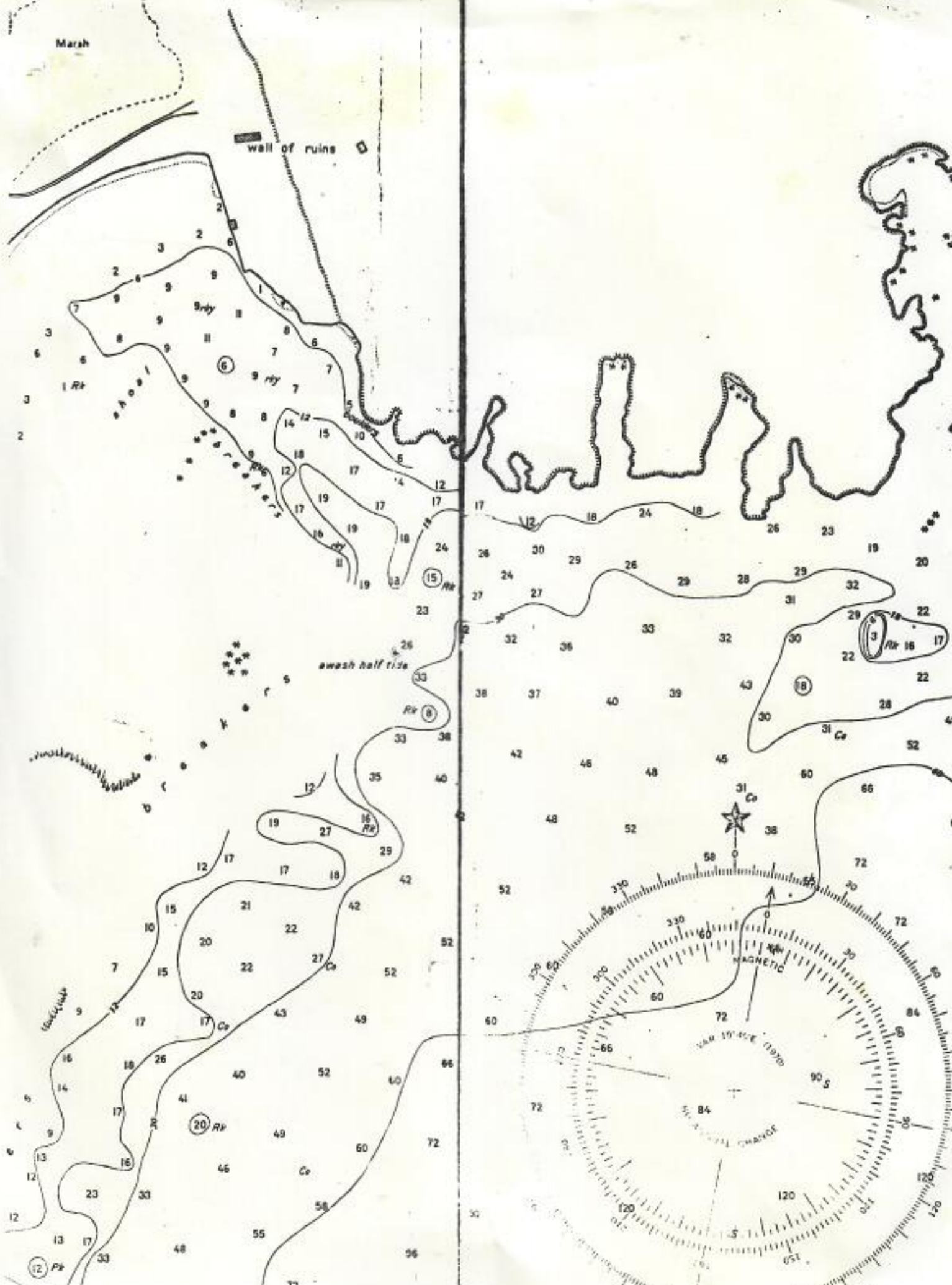
31 Co

MAGNETIC

JAN 1974

SEA LEVEL

CHANGE





U.S. Department of Justice

United States Attorney  
District of Hawaii

Room C-242, United States Courthouse  
300 Ala Moana Blvd., Box 50183  
Honolulu, Hawaii 96850

808/546-7170

December 11, 1984

National Marine Fisheries Service  
Law Enforcement Branch  
P. O. Box 50246  
Honolulu, Hawaii 96850

Attn: Gene Witham  
Senior Agent

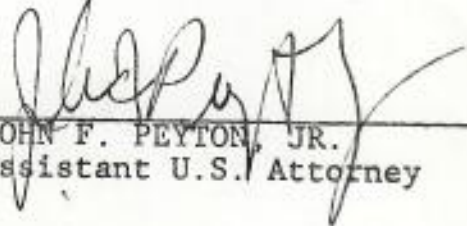
Gentlemen:

Re: United States of America v.  
[REDACTED] and [REDACTED]  
Cr. 84-02779

Enclosed please find a copy of the Judgment and Probation/Commitment Order for each of the above-named defendants.

Sincerely,

DANIEL BENT  
United States Attorney  
District of Hawaii

By   
JOHN F. PEYTON, JR.  
Assistant U.S. Attorney

JFP/om  
Enclosures



DOCKET NO [REDACTED]

JUDGMENT AND PROBATION/COMMITMENT ORDER

In the presence of the attorney for the government the defendant appeared in person on this date

MONTH DAY YEAR [REDACTED] 1984

COUNSEL [ ] WITHOUT COUNSEL However the court advised defendant of right to counsel and asked whether defendant desired to have counsel appointed by the court and the defendant thereupon waived assistance of counsel. [X] WITH COUNSEL [REDACTED] (Name of Counsel) UNITED STATES DISTRICT COURT DISTRICT OF HAWAII

PLEA [X] GUILTY, and the court being satisfied that there is a factual basis for the plea, [ ] NOLO CONTENDERE, [ ] NOT GUILTY NOV 16 1984 at 4 o'clock and 30 PM WALTER A. Y. H. CHINN, CLERK

FINDING & JUDGMENT There being a finding/verdict of [ ] NOT GUILTY. Defendant is discharged. [X] GUILTY. Defendant has been convicted as charged of the offense(s) of having on or about July 16, 1984 at Punalu Hawaii County, in the District of Hawaii, knowingly and intentionally took with the United States or territorial sea of the United States, a green sea turtle, a species of wildlife determined to be threatened with extinction, in violation of Title 1 United States Code, Section 1538(a)(1)(G) and 50 Code of Federal Regulation, Section 227.71(b) as charged in the Information.

SENTENCE OR PROBATION ORDER The court asked whether defendant had anything to say why judgment should not be pronounced. Because no sufficient cause to the contrary was shown, or appeared to the court, the court adjudged the defendant guilty as charged and convicted and ordered that: The defendant is hereby committed to the custody of the Attorney General or his authorized representative for imprisonment for a period of IT IS ADJUDGED that the defendant pay a fine to the United States in the sum \$1,000.00. The execution of the sentence as to \$750.00 is hereby suspended and the defendant placed on probation without supervision for a period of ONE (1) YEAR.

SPECIAL CONDITIONS OF PROBATION In addition to the special conditions of probation imposed above, it is hereby ordered that the general conditions of probation set out on the reverse side of this judgment be imposed. The Court may change the conditions of probation, reduce or extend the period of probation, and at any time during the probation period or within a maximum probation period of five years permitted by law, may issue a warrant and revoke probation for a violation occurring during the probation period.

COMMITMENT OR COMMITMENT The court orders commitment to the custody of the Attorney General and recommends, It is ordered that the Clerk deliver a certified copy of this judgment and commitment to the U S Marshal or other qualified officer.

[Signature] Bert S. Tokairin November 16, 1984



CHARGE

DISTRICT OF HAWAII

DOCKET NO

# JUDGMENT AND PROBATION/COMMITMENT ORDER

In the presence of the attorney for the government the defendant appeared in person on this date

MONTH DAY YEAR  
1984

COUNSEL

WITHOUT COUNSEL

However the court advised defendant of right to counsel and asked whether defendant desired to have counsel appointed by the court and the defendant thereupon waived assistance of ~~attorney~~ **THE**

WITH COUNSEL

(Name of Counsel)

UNITED STATES DISTRICT COURT  
DISTRICT OF HAWAII

PLEA

GUILTY, and the court being satisfied that there is a factual basis for the plea,

INOLO CONTENDERE,

NOT GUILTY

NOV 16 1984

at 4 o'clock and 20 min. PM  
WALTER A. Y. H. CHINN, CLERK

FINDING & JUDGMENT

There being a finding/verdict of

NOT GUILTY. Defendant is discharged

GUILTY.

Defendant has been convicted as charged of the offense(s) of having on or about July 16, 1984 at Punaluu Hawaii County, in the District of Hawaii, knowingly and intentionally took with the United States or territorial sea of the United States, a green sea turtle, a species of wildlife determined to be threatened with extinction, in violation of Title 16 United States Code, Section 1538(a)(1)(G) and 50 Code of Federal Regulation, Section 227.71(b) as charged in the Information.

SENTENCE OR PROBATION ORDER

The court asked whether defendant had anything to say why judgment should not be pronounced. Because no sufficient cause to the contrary was shown, or appeared to the court, the court adjudged the defendant guilty as charged and convicted and ordered that: The defendant is hereby committed to the custody of the Attorney General or his authorized representative for imprisonment for a period of

IT IS ADJUDGED that the defendant pay a fine to the United States in the sum of \$1,000.00.

The execution of the sentence as to \$750.00 is hereby suspended and the defendant placed on probation without supervision for a period of ONE (1) YEAR.

SPECIAL CONDITIONS OF PROBATION

ADDITIONAL CONDITIONS OF PROBATION

In addition to the special conditions of probation imposed above, it is hereby ordered that the general conditions of probation set out on the reverse side of this judgment be imposed. The Court may change the conditions of probation, reduce or extend the period of probation, and at any time during the probation period or within a maximum probation period of five years permitted by law, may issue a warrant and revoke probation for a violation occurring during the probation period.

COMMITMENT IMMEDIATELY

The court orders commitment to the custody of the Attorney General and recommends,

It is ordered that the Clerk deliver a certified copy of this judgment and commitment to the U.S. Marshal or other qualified officer.

BY

U.S. District Judge

*Bert S. Tokairin*  
Bert S. Tokairin  
November 16, 1984





U.S. Department of Justice

United States Attorney  
District of Hawaii

Room C-242, United States Courthouse  
300 Ala Moana Blvd., Box 50183  
Honolulu, Hawaii 96850

808/546-7170

December 11, 1984

National Marine Fisheries Service  
Law Enforcement Branch  
P. O. Box 50246  
Honolulu, Hawaii 96850

Attn: Gene Witham  
Senior Agent

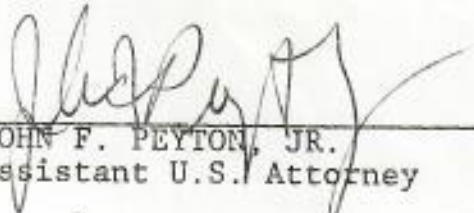
Gentlemen:

Re: United States of America v.  
[REDACTED] and [REDACTED]  
[REDACTED]

Enclosed please find a copy of the Judgment and  
Probation/Commitment Order for each of the above-named  
defendants.

Sincerely,

DANIEL BENT  
United States Attorney  
District of Hawaii

By   
JOHN F. PEYTON, JR.  
Assistant U.S. Attorney

JFP/om  
Enclosures

# Clutch Of Turtles Hatch In Nest At Punalu'u Beach

By Jan Selland  
Staff Writer

One night last June, under the safety and secrecy of darkness, a female turtle climbed up on the black sand beach of Punalu'u in Ka'u.

She had come up out of the water to lay her eggs. Because she had picked a beach inhabited and frequented by man, she had a hard time finding a suitable place.

Crawling across the hill of sand, she went across the dirt access road, stopping in front of a stone wall. The ground here was too hard to dig. Further up the road, she became discouraged when the dirt turned to pavement. Turning around and heading back toward the ocean, she finally found a spot — about five feet from the lifeguard's chair — where she could dig down and deposit the 187 eggs she carried.

She returned to the sea, leaving the eggs laying there in the black sand where they would have been doomed to be trampled on by dozens of daily tourists and beachgoers or dug up by dogs and mongoose.

## Nest Discovered

Arnold Howard, a resident of Punalu'u, was making his routine morning check of the fishing conditions when he discovered the turtle's rambling tracks. It was easy to follow the tractor tire-like path to the obvious nesting site. Locating the exact area, Howard was careful not to handle the eggs, as this would decrease their "hatchability."

Howard, who has hunted the sea turtles for their savory meat, knows that the survival of such nestings is vital to the continued existence of the turtles in Hawaiian waters. Other conservation methods initiated to preserve the turtles would be futile if the eggs do not hatch to replenish the existing population.

Aware of the need to protect this clutch of eggs, Howard

Orchid Isle (Hilo) Oct 27-Nov2, 1974

LIBRARY OF  
GEORGE H. BALAZS

## Baby turtles dig their way out of the nest of black sand Punalu'u Beach.

far above the high tide mark where the eggs can incubate in the warm, moist sand.

The female will probably return in two or more weeks to nest again, for several nestings occur in one season. It is believed that the female turtle is capable of laying fertile eggs for years after a single mating.

We refrain from calling the female turtle "mother" for once she has laid her eggs, she returns to the sea, having no further interest in the nest.

## Robbing By Predators

She leaves the nest to the mercy of nature and man. The nest is often robbed of eggs by predators and the small turtles that do hatch are prey to crabs, birds and other animals. Once in the ocean, carnivorous fish also pose a threat to their survival.

To complicate the turtle's existence is man who hunts it for the meat and for the shell. Balazs says there is less than a two per cent chance that the hatched turtle will grow to maturity.

Recent national and state legislation has been enacted to protect sea turtles. State revised statutes make it

JCI

111

S

67



and his wife, Jeanette, contacted C. Brewer and Co., which owns the strip of beach where the eggs were. Brewer had a wire fence built around the nest to keep the eggs from being disturbed until they hatched, since they lay right in the busiest part of the beach.

#### Notified Officials

The Howards then notified the Department of Land and Natural Resources, Division of Fish and Game about the clutch. The department advised them to contact University of Hawaii Marine Biologist George Balazs who has been working with and studying sea turtles in the Hawaiian Archipelago.

According to Balazs, the eggs could be expected to hatch in 65 days or perhaps less since the black sand absorbs more heat than white sand, thus speeding the incubation process. He told them what to look for and requested that they document all data concerning the clutch for scientific purposes. Documented information on turtle nestings is infrequent and most valuable in the preservation of the turtle.

The fenced-in clutch became somewhat of a community project, with everyone wondering when and if the eggs would hatch. The Howards spent the waiting period researching the breeding and nesting characteristics of turtles.

The female turtle could have migrated thousands of miles from her feeding grounds before reaching Punalu'u to lay her eggs. It is believed that she will return to the same beach where she was hatched, much like the salmon who swim upstream to lay their eggs in the quiet waters where they hatched.

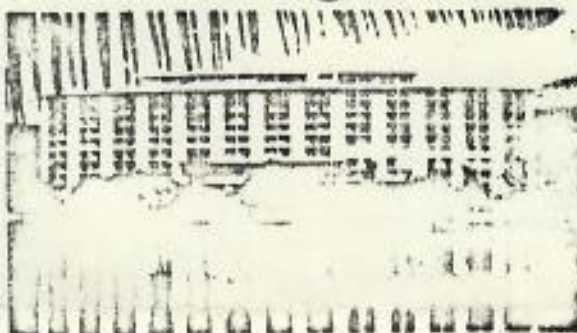
#### Nesting Grounds

If the female finds that man has taken over her beach and it is no longer available for laying her eggs, she may just dump them in the ocean rather than migrate to another beach to nest. This is one way that man has indirectly contributed to the decline of the turtle population.

Characteristically, mating takes place in adjacent waters and the female emerges alone at night to deposit as many as 200 eggs. The nest, dug as deep as her hind legs are long, is usually carefully constructed in the sand

(Please Turn To Page 6)

## In Hilo, it's the exciting new *Hilo Lagoon* HOTEL



For a wonderful stay in Hilo.

Overlooking beautiful Waiakea Lagoon and Park. Centrally located at Kaiko's Civic Center. Air conditioned rooms with lanais. Swimming pool. Sensible rates.

For dining


Enjoy cocktails and delicious dinners with a spectacular view in Hilo's only penthouse restaurant, PANIOLA STEAK AND LOBSTER HOUSE... Cocktails in the adjacent PANIOLA LOUNGE... For buffet breakfast, lunch or dinner, try the attractive, moderately priced TIKI GARDEN LOUNGE.

WINDJAMMER'S CABIN

For cocktails, 11 a.m. to closing.

HAPPY HOUR

5-7 p.m. Monday through Saturday

 *Hilo Lagoon* HOTEL

101 Aupuni - At Kaiko's Civic Center. Phone 935 9011  
A HAWAIIAN PACIFIC RESORTS HOTEL

Two jumps  
be given  
any fresh  
film is on  
developing  
Offer experi

Quality

Shooting

Just  
100 Percent



# Baby Turtles Head For The Ocean

(From Page 5)

unlawful to "mutilate, injure, take, kill, possess, sell or offer to sell leatherback, hawksbill or green sea turtles or any of their parts or eggs or nests within the state and waters subject to its jurisdiction." Violators are subject to fines up to \$500. Permits may be issued by the Board of Land and Natural Resources to use the turtles or their eggs for scientific, educational or propagational purposes. Turtles that are caught under permit for home consumption must have an upper shell that measures more than 36 inches across. Eggs and offspring of green turtles held in captivity may be sold — provided a permit has been issued by the board. It is illegal to use nets for catching turtles under any circumstances.

## Hatching In Captivity

Little success has come from restocking programs that try to hatch and raise turtles in captivity. Therefore, Balazs was particularly interested in whatever happened to the nest of eggs that lay surrounded by a wire fence on Punalu'u Beach.

Sixty five days came and went and nothing happened inside the wire fence. Earlier in July, usually high waves had washed up over the area, depositing more sand on the clutch and burying the eggs even deeper. This would make it harder for the newly hatched turtles to climb out of the nest. Balazs recalled that eggs on the French Frigate Shoal where he has observed other turtles, took longer to hatch and attributed it to cooler temperatures.

On the morning of the 73rd day, in late August, a small depression was noticed in the sand above the clutch. About 2:30 p.m. the first turtle climbed out of the sand and headed for the ocean. The fence was removed and the exodus of the baby turtles from their nest began. The turtles weighed less than an ounce and looked much like the turtles one would buy in Kress.

## 163 Into The Sea

who deemed it taboo to kill this turtle.

Until the nesting at Punalu'u, the only documented hawksbill nesting reported in recent years occurred in 1969 on Halawa Beach on Molokai. Mrs. Howard has lived at Punalu'u all her life and says that this was the first evidence of sea turtles nesting there that she has ever heard of or seen, except for empty shells found in 1972 by workers digging in the area. Is it possible that this was an earlier brood of the same female turtle?

In early October the family of Dr. Paul Caldwell of Hilo was glassball hunting at Kaalualu near South Point, about 20 miles down the coast from Punalu'u. Kimberlee found a baby hawksbill turtle wedged in the crevice of a rock 50 yards from the ocean near a tidal pool.

Scientists have not been able to trace baby turtles because no way of tagging them has been found. Since the Punalu'u turtles were not tagged there is no definite way of identifying them, but it can be presumed that this turtle was one of the same. He was about the right age to have hatched at Punalu'u in August and the winds and currents are right for carrying him to Kaalualu.

## Young One Revived

The Caldwells revived the slightly dehydrated turtle in sea water and brought it back to Hilo. Jim Jovic, of the County Zoo, was given custody of the baby turtle that would have died if the Caldwells hadn't found it. The county will apply to the federal government for a permit to keep it. Jovic said, "We would like to keep it in the zoo, but if they refuse the permit, he is healthy enough to survive if we released him in the ocean."

The hawksbill is the most endangered of the Hawaii sea turtles. Not only is it over-exploited for its meat, leather and eggs, but also for the horny plates or "tortoise-shell" that is fashioned into decorative bracelets and combs. The hawksbill is also a favorite for stuffing. Federal legislation has made it illegal to import or export products made from the hawksbill, protecting him within U.S. waters. Awareness and concern among the general



By 6:30 p.m., with some human assistance in digging out the deeper ones, 163 turtles had made their way down the beach to the ocean, cheered on by faithful clutch-watchers and visiting tourists. Sixteen had died before getting out and eight eggs didn't hatch.

The Howards, who had kept an accurate count of the hatching turtles, forwarded their notes with a specimen of a dead turtle to Balazs at the Marine Biology Institute.

He confirmed that the turtles were of the hawksbill species, one of three species of sea turtles which exist in the Hawaiian Archipelago. The other two are the leatherback and the commonly known green sea turtle. The hawksbill, which weighs 80 to 100 pounds at maturity, is about half the size of the green sea turtle. Its population is very small and Balazs definitely described it as the most endangered species.

#### Hawaiian Taboo

The Hawksbill was known as the e'a, to the old Hawaiian

public, illustrated by the Howards and their friends at Punalu'u, and by the Caldwells, is necessary if we are to preserve the turtle in our waters, authorities say.



For cooking, clothes drying and water heating, gas is the energy saver.

Gas ranges, clothes dryers and water heaters use much less of Hawaii's primary energy source, oil, than electric ones. Taken together, about 40% less. That's quite a savings and it's especially important today when there is a real need to conserve our natural resources. Save energy. Your gas appliance dealer can help you.



**GAS**  
the  
energy  
saver

## Grumbacher Art Supplies

Including New Materials

- BRUSHES • EASELS • SKETCH PA
- OIL & ACRYLIC PAINTS • CANVAS
- PALETTE KNIVES • PALETTE PADS
- BULK CANVAS & WOODEN STRIPS
- MAT BOARD



**Cost Less  
Imports**

## Second Straight Year

# Clutch of Turtles Hatch at Punaluu Beach

PAGE 3

It was Thursday morning, September 4, and I had just sat down for breakfast at 7:10 a.m. (hot cakes and coffee) when the telephone rang.

I picked up the receiver on the first ring. The caller's voice on the other end said excitedly "Baclig, Baclig, come quick. The turtles are hatching."

Without even taking a sip of my coffee, a bite of my hot cakes, I rushed from the house, jumped into my car, and headed for Punaluu black sand beach. I was about to witness the exodus of baby turtles from their nest.

Despite my journalistic instincts to speed to the scene, I stayed within the maximum 55-mile-per-hour speed limit—no doubt a result of my once having been a law enforcement officer.

I arrived at the beach 20 minutes later at 7:30 a.m. as the first baby turtle was working its way from the nest, and finding a path down the beach to the ocean.

### Howards Keep Tally

Witnessing the hatching were Ka'u residents Arnold and Jeanette Howard, who had discovered the nest—their second such find in as many years. Like last year, they had kept an accurate account of the egg laying and hatching activities.

Reports of the hutch of eggs were turned over to University of



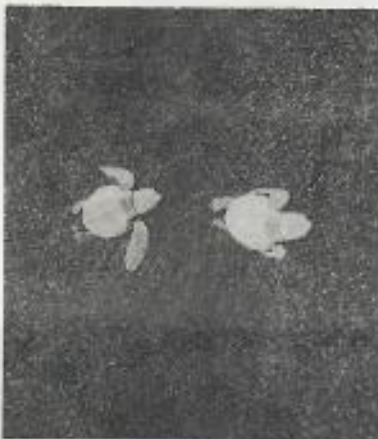
First turtle leaving nest for ocean.



Several more pick up the trail



First turtle heads for the ocean.



Two more follow same path.





Hawaii Marine Biologist George Balazs, who has been working with and studying sea turtles in the Hawaiian Archipelago.

Last summer's clutch was laid on June 13 near the same spot at Punaluu. On the morning of the 73rd day, 163 baby Hawksbills left their nest and went into the ocean.

This year's eggs, also Hawksbill turtles, were laid in a nest two feet deep early on June 27.

On September 4, 67 days later, 85 baby Hawksbills crawled into the ocean. The exodus from the nest continued for six days.

### 143 Into The Sea

The Howards total count on September 9, the last day of hatching, was 143 live turtles. Nine died before reaching the ocean, and 12 didn't hatch.

Also on hand Thursday morning when the first group of turtles hatched were Ed Crook, vice president, Hawaiiana Investment Co., Bud Doty, construction superintendent, Ka'u Sugar Co., and Myra Sumida and her dog, Tutie.

Last year Balazs had told the Howards that the female turtle probably would return to the same beach where she was hatched.

Balazs, who arrived in Ka'u the second day too late to witness any babies-hatching-said the same female may have returned to the nesting grounds, which was almost in the same spot as last year's nest.

Two years in a row in the same location is interesting. Will it happen again? Wait until next year.

Away they go with the waves



Myra and Tutie bid farewell and best of luck.



University of Hawaii Marine Biologist George Balazs, second from right, discusses the hatching of Hawksbill turtles with Arnold Howard. Balazs's wife, Linda, examines a dead turtle to be used for further study, as Jeanette Howard looks on.-Ka'u News Photo.

Tutie watches pair go by.



Tutie checks to see if all is well.



This one tries it by going over a rock.



## 8 Teams in Ka'u Softball Tourney Sept. 26-28

The Ka'u warriors, Ka'u District Class B softball champions, will host an invitational tournament September 26-28 at the Pahala Ball Park.

Eight teams are expected in the three-day single elimination tourney. They are the host Warriors, Ka'u Dolphins, Pepekeo, Honomu Warriors, Kona, Paaulo, Braves and Puna.

Two games are on tap Friday night, six on Saturday and four

more on Sunday.

The schedule:

Friday, Sept. 26-Ka'u Dolphins vs. Pepekeo, 6 p.m.; Ka'u Warriors vs. Honomu Warriors, 7:30 p.m.

Saturday, Sept. 27-Puna vs. Kona, 9 a.m.; Paaulo vs. Braves, 10:30 a.m.; Losers Games 1 and 2, 12:30 p.m.; Losers Games 3 and 4, 2 p.m.; Winners Games 1 and 2, 3:30 p.m.; Winners Games 3 and 4, 5 p.m.

## Annual Big Island Hongwanji Tourney Set Sept. 28 In Ka'u

The annual Hawaii Shima (Big Island) Hongwanji Judo Tournament will be held Sunday, September 28, starting at 9 a.m. in the Ka'u High School Gym.

Teams representing five Hongwanjis on the island will compete for team and individual awards.

The Pahala Hongwanji Judo Club will be the host. Tamotsu Iwanaga is tournament chairman. About 150 participants representing Hilo, Honomu,

Honokaa, Kona and Pahala Hongwanjis are expected.

Five-man team matches will be in the following groups: Minor A, ages 10 and below; Minor B, 12 and below; Junior, 15 and below; and Senior, 16 years and older.

Individual matches will be held in the same divisions according to weight. There also will be a black belt division.

The tournament is open to the public.

## "HIVIA Day" Golf Tournament Now Set For Sunday, Oct. 5

The special "HIVIA Day" golf tournament has been re-scheduled

Deadline for entries is Saturday, Oct. 4. There is a \$5 tournament

## KA'U CALENDAR

### SEPTEMBER 24

Ka'u High P-TSA meeting, 7 p.m. school cafeteria.

### SEPTEMBER 25

Board of Education meeting, 7 p.m., Ka'u High School cafeteria.

American Hotel & Motel Association, Ka'u Chapter meeting 7 p.m., Kilauea Volcano House.

### SEPTEMBER 26

BIIF football, Ka'u High at Konaaweena, 7:30 p.m.

### SEPTEMBER 26-27

Rummage sale, United Methodist Church women, Naalehu Church Hall.

### SEPTEMBER 26-28

Invitational Softball Tournament featuring eight teams, Pahala Ball Park.

### SEPTEMBER 28

Hawaii Shima (Big Island) Hongwanji Judo Tournament, 9 a.m., Ka'u High School gym.

### OCTOBER 2

Hui O Kokua O Ka'u monthly meeting, 7 p.m., Pahala Clubhouse.

### OCTOBER 3

BIIF football, Hawaii Preparatory Academy at Ka'u, 6:30 p.m.

### OCTOBER 5

Sushi sale, sponsored by Pahala Holy Rosary Catholic Church choir.

### OCTOBER 8

Ka'u Jaycees monthly meeting, 7 p.m., Ka'u Sugar cultivation office.

Ka'u Soil & Water Conservation District meeting, 7 p.m., Pioneer Federal Savings & Loan, Naalehu.

## Letters

### Football Boosters and Friends-

The Potluck dinner held after the football game was just "super."

Thank you very much for showing the Kaui High School team that Ka'u-no-ka-ol...We appreciate your support.

Mahalo  
Bob Fujimori, AD  
Ka'u High School

## CLASSIFIED ADS

FOR SALE



for Sunday, Oct. 5, at Seamountain Golf Course, it was announced by Al Pelayo, tournament chairman.

The tourney, sponsored by the American Hotel & Motel Association (AH&MA), Ka'u Chapter, was originally planned for September 27. The date was changed because of a conflict with another event scheduled at the Kilauea Volcano Golf Course on the same date, Pelayo said.

Golfers may sign up at Seamountain Golf Course.

Proceeds from the tournament will be donated to HIVIA (Hawaii Island Visitor Industry Association), which is currently conducting its annual fund raising drive.

Prizes will be awarded in both men's and women's flights. They include low gross and low net trophies, and merchandise prizes in A B and C flights on net competition.

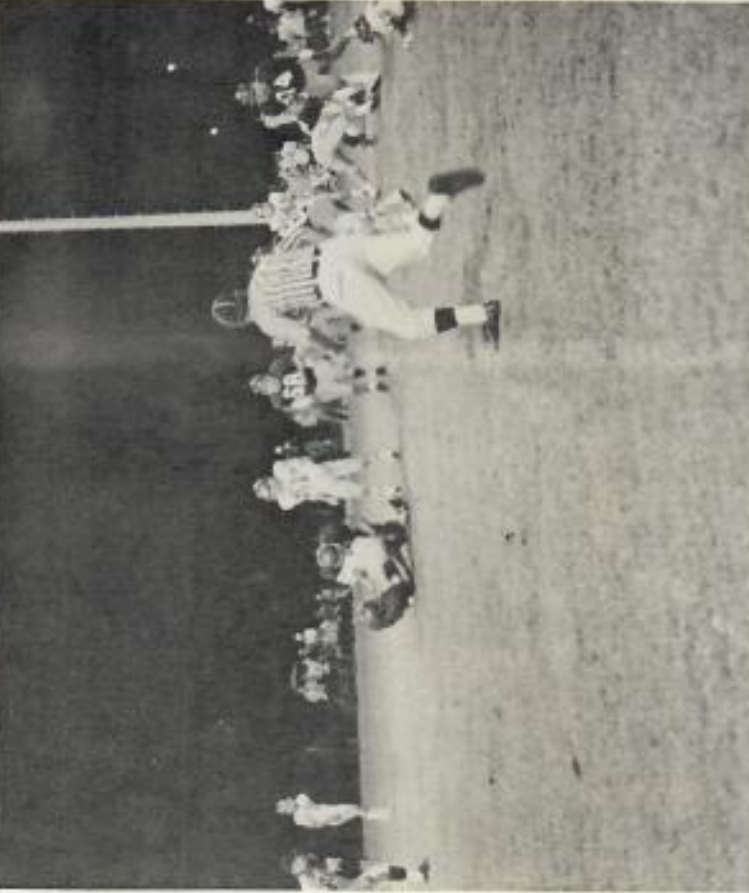
**OCTOBER 9**  
Ka'u Lions meeting, 6:30 p.m.  
Honuapo.

**OCTOBER 16**  
Ka'u Hawaiian Civic Club meeting 7 p.m., Naaalehu Clubhouse.

**AVON CALLING**  
For your Avon products, call Mildred Gallimbs at 828-8530.

## Movie Schedule

## KA'U



**THROWN FOR A LOSS**-Sammy Pua, defensive standout on Ka'u High School's football team, grabs hold of a Kauai High School ball carrier and throws him for a loss on this play in the second period of the Ka'u-Kauai inter-island pre-season grid game September 12 at Pahala Ball Park. The host Trojans bowed to Kauai by a 8-0 score. -Ka'u News Photo

### PAHALA

September  
23 Shanghai Joe (R)  
26 Hands of the Ripper (R)  
27 How Come Nobody's on Our Side (PG)  
28 No Place To Ride (R)  
30 Hammer of God(R)

### OCTOBER

2 Tullisan (FI)  
3 Dark Star (G)  
4 Title Later  
5 The Mutations (R)

### NAAALEHU

### September

23 Little Superman (Chinese Kung Fu)  
25 Odessa File (PG)  
26-28 Return to Macon County (PG)  
Ware Wolf of Washington (R)

7 I Escaped From Devil's Island (R)  
7 Seven Blows of Dragon (R)  
Kid Blue (PG)  
10 Deadly China Dolls (R)  
11 Title Later  
12 Airport 1975 (PG)

KA'U NEWS is published by the Corporate Communications Department, C. Brewer & Company, Ltd. It is written for the residents of Ka'u. C. Brewer operations in Ka'u include Volcano Golf & Country Club, Kilauea Volcano House, Brewer Orchards, Inc., Hawaiian Investment Company, Inc., Punalu'u Village Restaurant, Ka'u Sugar Company, Naaalehu Dairy, and Seamountain - Ninole Golf Course.

Herbert R. Conrad ..... Director, Corporate Communications  
Andy Baclig ..... Editor

Address all correspondence to: KA'U NEWS, P.O. Box 307, Pahala, Hawaii 96777  
Phone 928-8144



# Kaui News

BULK RATE  
U.S. POSTAGE  
**PAID**  
PERMIT NO. 5  
PAHALA, HAWAII  
96777

BOXHOLDER, LOCAL

VOL. IV, No. 12

KA'U, HAWAII

SEPTEMBER 24, 1975

## Ka'u Hi P-TSA Meets Sept. 24

Ka'u High School P-TSA will hold its first meeting of the current school year on Wednesday, September 24, 7 p.m. in the school cafeteria.

Preston Barnes, president, announced the following agenda:

Introduction of new teachers by Principal Thomas Higa; a welcome message by Higa; discussion on the meeting of the Board of Education in Ka'u September 25; and, a tour of the new science building.

Refreshments will be served. All parents are urged to attend.

## Yokomizo Promoted At Brewer Nursery



NEARING COMPLETION-Work on the 74 low-rise condominium units at Seamountair-Hawaii is nearly complete. In-

are presently being done. This photo shows the single, one and two bedroom units. In the foreground are the number one and



# State BOE To Meet In Ka'u Sept. 25

The State Board of Education will hold its next meeting on Thursday, September 25, 7 p.m. in the Ka'u High School cafeteria.

It marks the first time the BOE has gathered in Ka'u for a regular meeting.

Ka'u residents are urged to come to meet with members of the board. An open-type meeting is planned. Those attending are welcome to voice their opinions on subjects concerning education and the public schools system.

Dr. Richard Ando is chairman of the BOE. Big Island members are Hiroshi Yamashita and Ruth Tabrah.

## Aloha Week Royal Court To Appear

The Aloha Week Royal Court will be in Ka'u Wednesday, September 24, to take part in the Aloha Week program at 10 a.m. in the Ka'u High School gym.

Aloha Week festivities on the Big Island began Saturday, September 20, and will continue through Saturday, September 27.

The visit of the Royal Court in Ka'u is being headed by Olan Carpenter and Leinaala Enos of the Ka'u Hawaiian Civic Club.

A youth court of Ka'u High students, and a program of songs and dances is planned.

The proposed amendment change to Rule 24 to permit student smoking in school may be discussed, it was announced by Lloyd Hara, Big Island chairman of the School Advisory Council.

"The matter has been brought up at recent meetings. The board Aug. 21 postponed a final decision to give School Superintendent Teichiro Hirata time to draft enforcement regulations, and school officials time to prepare for any

## Three-Act Comedy Slated Oct. 18-19

"All Because of Agatha," a three-act comedy by the Ka'u Theater Guild, will be staged Oct. 18 and 19 at the Naalehu Lower Clubhouse.

Both performances begin at 7 p.m. Admission is by donation.

Members of the cast are Joanne Byman (Agatha Forbes), Brian Hannula (Duff O' Hara), Bede Nishimura (Joan O' Hara), Roger Shepard (Mr. Van Buren), Carol Swangle (Mrs. Boggs), Janice Willett (Ethel), John Hursey (Dr. Randolph) Helen Wigle (Thelma Brackenridge), Ronald Lacro (Slip Cannon), and Janet Rychener (Madam L.Solda).

The comedy is about a witch who comes back to haunt a house, Floyd Pulham is director.

resulting problems," Hara told Ka'u News.

"I feel somehow they should make a policy that would be consistent," the SAC chairman said.

Another item that may be discussed is the board's report on the search for a successor to replace Hirata, who Aug. 21 announced he will resign at the end of this year.

Deputy Supt. Albert Miyasato is expected to become acting superintendent until a permanent successor is named.

Ando reported it is unlikely that a successor will be named by Jan. 1.

## Adult Education Courses Slated

An adult education program sponsored by the Department of Education is being organized for the Ka'u area, it was announced by Robert Fujimori, director of adult education in Ka'u.

The courses are open to persons 18 years of age and older. Basic education courses are free. Interest or hobby type courses have a minimum charge of \$16.00.

Senior citizens, 60 years of age and over, will be admitted free to all courses, Fujimori said.

Sessions normally run for 20 hours. Courses to be offered will be determined by the availability of



**Leslie Yokomizo**

Leslie Yokomizo, a native of Ka'u has been promoted to landscape and nursery manager for Hawaiian Investment Co. (HIC), C. Brewer's land development subsidiary.

Yokomizo, supervisor of the operation since 1972, is responsible for implementing landscaping designs at Brewer developments, and manages HIC's nursery at Punalu'u, which supplies trees and shrubs for the projects.

He was previously associated with Brewer Orchards' macadamia nut operation at Pahala as a trainee, and with Ka'u Sugar Co. as a seed cane foreman.

He is a graduate of Ka'u High School and earned a B.S. degree in crop science from California State Polytechnic in 1970.

Instructors and the number of enrollees per class, with a minimum set for each class.

Forms are being sent home with students for interested parents to sign. Others are asked to contact Fujimori at 928-8337 (Ka'u High School) or at 928-8528 (residence).



## 8 Teams in Ka'u Softball Tourney Sept. 26-28

The Ka'u warriors, Ka'u District Class B softball champions, will host an invitational tournament September 26-28 at the Pahala Ball Park.

Eight teams are expected in the three-day single elimination tourney. They are the host Warriors, Ka'u Dolphins, Pepeekeo, Honomu Warriors, Kona, Paauilo, Braves and Puna.

Two games are on tap Friday night, six on Saturday and four

more on Sunday.

The schedule:

Friday, Sept. 26-Ka'u Dolphins vs. Pepeekeo, 6 p.m.; Ka'u Warriors vs. Honomu Warriors, 7:30 p.m.

Saturday, Sept. 27-Puna vs. Kona, 9 a.m.; Paauilo vs. Braves, 10:30 a.m.; Losers Games 1 and 2, 12:30 p.m.; Losers Games 3 and 4, 2 p.m.; Winners Games 1 and 2, 3:30 p.m.; Winners Games 3 and 4, 5 p.m.

## Annual Big Island Hongwanji Tourney Set Sept. 28 In Ka'u

The annual Hawaii Shima (Big Island) Hongwanji Judo Tournament will be held Sunday, September 28, starting at 9 a.m. in the Ka'u High School Gym.

Teams representing five Hongwanjis on the island will compete for team and individual awards.

The Pahala Hongwanji Judo Club will be the host. Tamotsu Iwanaga is tournament chairman. About 150 participants representing Hilo, Honomu,

Honokaa, Kona and Pahala Hongwanjis are expected.

Five-man team matches will be in the following groups: Minor A, ages 10 and below; Minor B, 12 and below; Junior, 15 and below; and Senior, 16 years and older.

Individual matches will be held in the same divisions according to weight. There also will be a black belt division.

The tournament is open to the public.

## "HIVIA Day" Golf Tournament Now Set For Sunday, Oct. 5

The special "HIVIA Day" golf tournament has been re-scheduled Oct. 4. There is a \$5 tournament

Sunday, Sept. 28-Losers Games 5 and 6 for 7th place, 9 a.m.; Winners Games 5 and 6 for consolation, 10:30 a.m.; Losers Games 7 and 8 for third place, 12 noon; Winners games 7 and 8 for championship, 1:30 p.m.

Twelve trophies will be presented following the completion of the tournament on Sunday. They include championship, runnersup, third, fourth (consolation), fifth (consolation runnersup), sixth, seventh and eighth place, sportsmanship, most valuable player, batting champ, and most home runs.

A concession booth serving chili, Portuguese soup, hot dogs, sandwiches, coffee and cold drinks will be available.

## Letters

### Football Boosters and Friends-

The Potluck dinner held after the football game was just "super."

Thank you very much for showing the Kasai High School team that Ka'u-no-ka-el...We appreciate your support.

Mahalo  
Bob Fujimori, AD  
Ka'u High School

## CLASSIFIED ADS

FOR SALE

## KA'U CALENDAR

### SEPTEMBER 24

Ka'u High P-TSA meeting, 7 p.m. school cafeteria.

### SEPTEMBER 25

Board of Education meeting, 7 p.m., Ka'u High School cafeteria.

American Hotel & Motel Association, Ka'u Chapter meeting 7 p.m., Kilauea Volcano House.

### SEPTEMBER 26

BIIF football, Ka'u High at Konawaena, 7:30 p.m.

### SEPTEMBER 26-27

Runnige sale, United Methodist Church women, Naalehu Church Hall.

### SEPTEMBER 26-28

Invitational Softball Tournament featuring eight teams, Pahala Ball Park.

### SEPTEMBER 28

Hawaii Shima (Big Island) Hongwanji Judo Tournament, 9 a.m., Ka'u High School gym.

### OCTOBER 2

Hui O Kokua O Ka'u monthly meeting, 7 p.m., Pahala Clubhouse.

### OCTOBER 3

BIIF football, Hawaii Preparatory Academy at Ka'u, 6:30 p.m.

### OCTOBER 5

Sushi sale, sponsored by Pahala Holy Rosary Catholic Church choir.

### OCTOBER 8

Ka'u Jaycees monthly meeting, 7 p.m., Ka'u Sugar cultivation office.

Ka'u Soil & Water Conservation District meetings, 7 p.m., Pioneer Federal Savings & Loan, Naalehu.



for Sunday, Oct. 5, at Seamount Golf Course, it was announced by Al Pelayo, tournament chairman.

The tourney, sponsored by the American Hotel & Motel Association (AH&MA), Ka'u Chapter, was originally planned for September 27. The date was changed because of a conflict with another event scheduled at the Kilauea Volcano Golf Course on the same date, Pelayo said.

Golfers may sign up at Seamountain Golf Course.

Proceeds from the tournament will be donated to HIVIA (Hawaii Island Visitor Industry Association), which is currently conducting its annual fund raising drive.

Prizes will be awarded in both men's and women's flights. They include low gross and low net trophies, and merchandise prizes in A B and C flights on net competition.

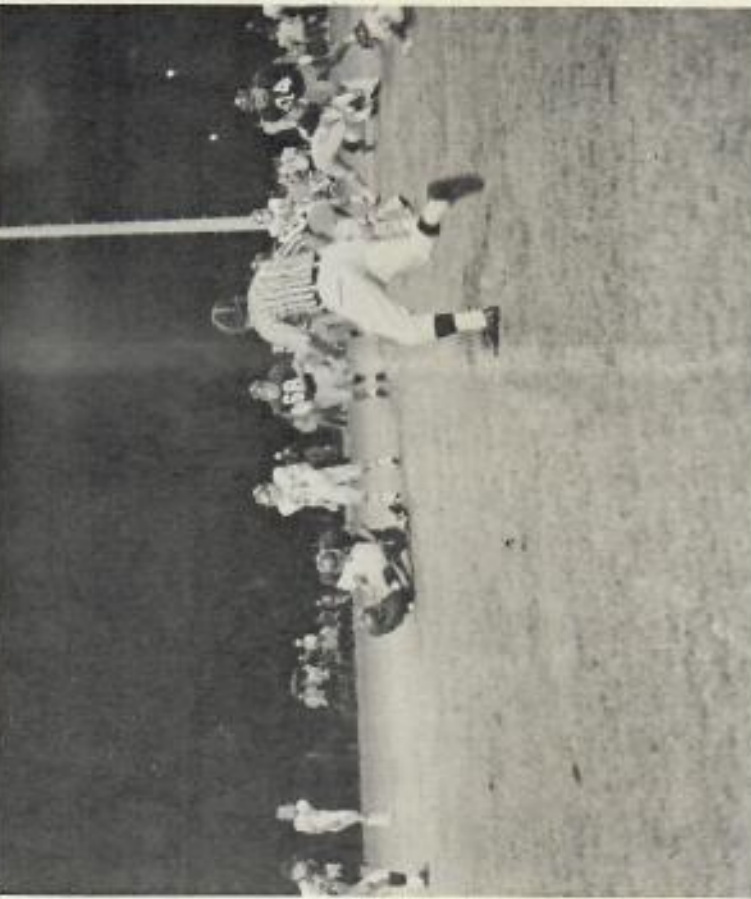
**OCTOBER 8**  
Ka'u Lions meeting, 6:30 p.m.  
Honouliuli.

**OCTOBER 16**  
Ka'u Hawaiian Civic Club meeting 7 p.m., Naaalehu Clubhouse.

**AVON CALLING**  
For your Avon products, call Mildred Galimba at 928-8530.

## Movie Schedule

## KA'U



**THROWN FOR A LOSS**-Sammy Pua, defensive standout on Ka'u High School's football team, grabs hold of a Kauai High School ball carrier and throws him for a loss on this play in the second period of the Ka'u-Kauai inter-island pre-season grid game September 12 at Pahala Ball Park. The host Trojans bowed to Kauai by a 8-0 score. -Ka'u News Photo

### PAHALA

September  
23 Shanghai Joe (R)  
26 Hands of the Ripper (R)  
27 How Come Nobody's on Our Side (PG)  
28 No Place To Ride (R)  
30 Hammer of God(R)

### OCTOBER

2 Tulisan (FI)  
3 Dark Star (G)  
4 Title Later  
5 The Mutations (R)

### NAAALEHU

#### September

23 Little Superman (Chinese Kung Fu)  
25 Odessa File (PG)  
26-28 Return to Macon County (PG)  
Ware Wolf of Washington (R)

7 I Escaped From Devil's Island (R)  
7 Seven Blows of Dragon (R)  
Kid Blue (PG)  
10 Deadly China Dolls (R)  
11 Title Later  
12 Airport 1975 (PG)

KA'U NEWS is published by the Corporate Communications Department, C. Brewer & Company, Ltd. It is written for the residents of Ka'u. C. Brewer operations in Ka'u include Volcano Golf & Country Club, Kilauea Volcano House, Brewer Orchards, Inc., Hawaiiiana Investment Company, Inc., Punalu'u Village Restaurant, Ka'u Sugar Company, Naaalehu Dairy, and Seamountain - Ninole Golf Course.

Herbert R. Conrad ..... Director, Corporate Communications  
Andy Baclig ..... Editor

Address all correspondence to: KA'U NEWS, P.O. Box 307, Pahala, Hawaii 96777  
Phone 928-8144



Second Straight Year

# Clutch of Turtles Hatch at Punaluu Beach

It was Thursday morning, September 4, and I had just sat down for breakfast at 7:10 a.m. (hot cakes and coffee) when the telephone rang.

I picked up the receiver on the first ring. The caller's voice on the other end said excitedly "Backig, Backig, come quick. The turtles are hatching."

Without even taking a sip of my coffee, a bite of my hot cakes, I rushed from the house, jumped into my car, and headed for Punaluu black sand beach. I was about to witness the exodus of baby turtles from their nest.

Despite my journalistic instincts to speed to the scene, I stayed within the maximum 55-mile-per-hour speed limit—no doubt a result of my once having been a law enforcement officer.

I arrived at the beach 20 minutes later at 7:30 a.m. as the first baby turtle was working its way from the nest, and finding a path down the beach to the ocean.

### Howards Keep Tally

Witnessing the hatching were Ka'u residents Arnold and Jeanette Howard, who had discovered the nest—their second such find in as many years. Like last year, they had kept an accurate account of the egg laying and hatching activities.

Reports of the hatch of eggs were turned over to University of Hawaii Marine Biologist George Balazs, who has been working with and studying sea turtles in the Hawaiian Archipelago.

Last summer's clutch was laid on June 13 near the same spot at Punaluu. On the morning of the 73rd day, 163 baby Hawksbills left their nest and went into the ocean.

This year's eggs, also Hawksbill turtles, were laid in a nest two feet deep early on June 27.

On September 4, 67 days later, 85 baby Hawksbills crawled into the ocean. The exodus from the nest continued for six days.

### 143 Into The Sea

The Howards total count on September 9, the last day of hatching, was 143 live turtles. Nine died before reaching the ocean, and 12 didn't hatch.

Also on hand Thursday morning when the first group of turtles hatched were Ed Crook, vice president, Hawaiiana Investment Co., Bud Doty, construction superintendent, Ka'u Sugar Co., and Myra Sumida and her dog, Tutie.

Last year Balazs had told the Howards that the female turtle probably would return to the same beach where she was hatched.

Balazs, who arrived in Ka'u the second day too late to witness any babies-hatching—said the same female may have returned to the nesting grounds, which was almost in the same spot as last year's nest.

Two years in a row in the same location is interesting. Will it happen again? Wait until next year.



First turtle leaving nest for ocean.



Several more pick up the trail



Two more follow same path.



First turtle heads for the ocean.



Turtle watches pair go by.



Away they go with the waves



Turtle checks to see if all is well.



Myra and Tutie bid farewell and best of luck.



This one tries it by going over a rock.



University of Hawaii Marine Biologist George Balazs, second from right, discusses the hatching of Hawksbill turtles with Arnold Howard, Balazs' wife, Linda, examines a dead turtle to be used for further study, as Jeanette Howard looks on. Ka'u News Photo.





Mr. George Balazs  
 National Marine Fisheries Service  
 Box 3830  
 2570 Dole St.  
 Honolulu 96812

**HERB  
 KAWAIIKI  
 KRANE**

72-6740 AHH Drive  
 Kailua-Kona, Hawaii 96740

*Herb Kawaiiki Krane*  
 designer of this  
 postage stamp



Mr. George Balazs  
 National Marine Fisheries Service  
 Box 3830  
 2570 Dole St.  
 Honolulu 96812

**HERB  
 KAWAHINDI  
 KRANE**

78-6740 AIII Drive  
 Kailua-Kona, Hawaii 96749

*Herb Kawahindi Krane*  
 Designer of this  
 postage stamp



# HERB KAWAINUI KANE

78-6740 Alii Drive  
Kailua-Kona, Hawaii 96740  
808 322-3441

4/5/84

Mr. George Balazs

Dear George,

Mahalo for your letter. There is something happening. Something about that place. No question about it and no explanation for it. The painting of Kauila (do you know the story of the turtle mermaid of the pond behind the black sand beach?) has affected others. The local folks who have worked in the restaurant have all developed a strong aloha for the painting, even though it has "spooked" them. Over the years several different waitresses have stated that the eyes of the little girl followed them.

Then there is the experience I had while doing the mural. I hallucinated on the last night I worked on it. Had been working very hard, no breaks, no food; then after midnight was painting alone, the building dark except for my work lights. Wind rattling the shutters.

Then I heard voices speaking in Hawaiian. Looked up and saw two of the figure on the beach in the mural speaking to each other. Then caught a movement from the left ( the mural is on a concave wall) and turned to see one of the women working in the halau turn her head away from me back to the profile pose I had painted. I put down my brush and went home.

Next day I got out my paints , everything ready, picked up my brush, and could find nothing more to do to the painting.

Then in the 1975 quake a flood wave washed in over the beach and pond and destroyed all furniture & fixtures in the restaurant and history center. Passed just beneath the frame of the painting. In the room where the mural is there was a mud mark up to four feet on the opposite wall but the painting was dry and clean. I was working in Kona on a job and went down the next day after calling to find out what happened so I saw it for myself. No explanation.

The imagery of Kauila keeps bothering me, and I expect that I'll be doing more about her to get it out of my system.

Aloha,

