

HOTEL ISA LEI

CABLE ADDRESS: 'TURTLE' P.O. BOX 1351 QUEENS RD., SUVA FIJI Is. TEL. No. 361 033.

13th December, 1975.

Ms. E.B. Bauser,
P.O. Box 403,
Yucca Valley,
CALIFORNIA, U.S.A. 92284.

Dear Sir,

Thank you for your letter of 1st December, 1975 and we are pleased to enclose brochures of our hotel. The hotel was built about 8 years ago and it was the owners idea to build on unusual shape of hotel and choose the South Sea Turtle as the feature.

Hoping to have you some time in the future as our guest, we remain

Yours faithfully,

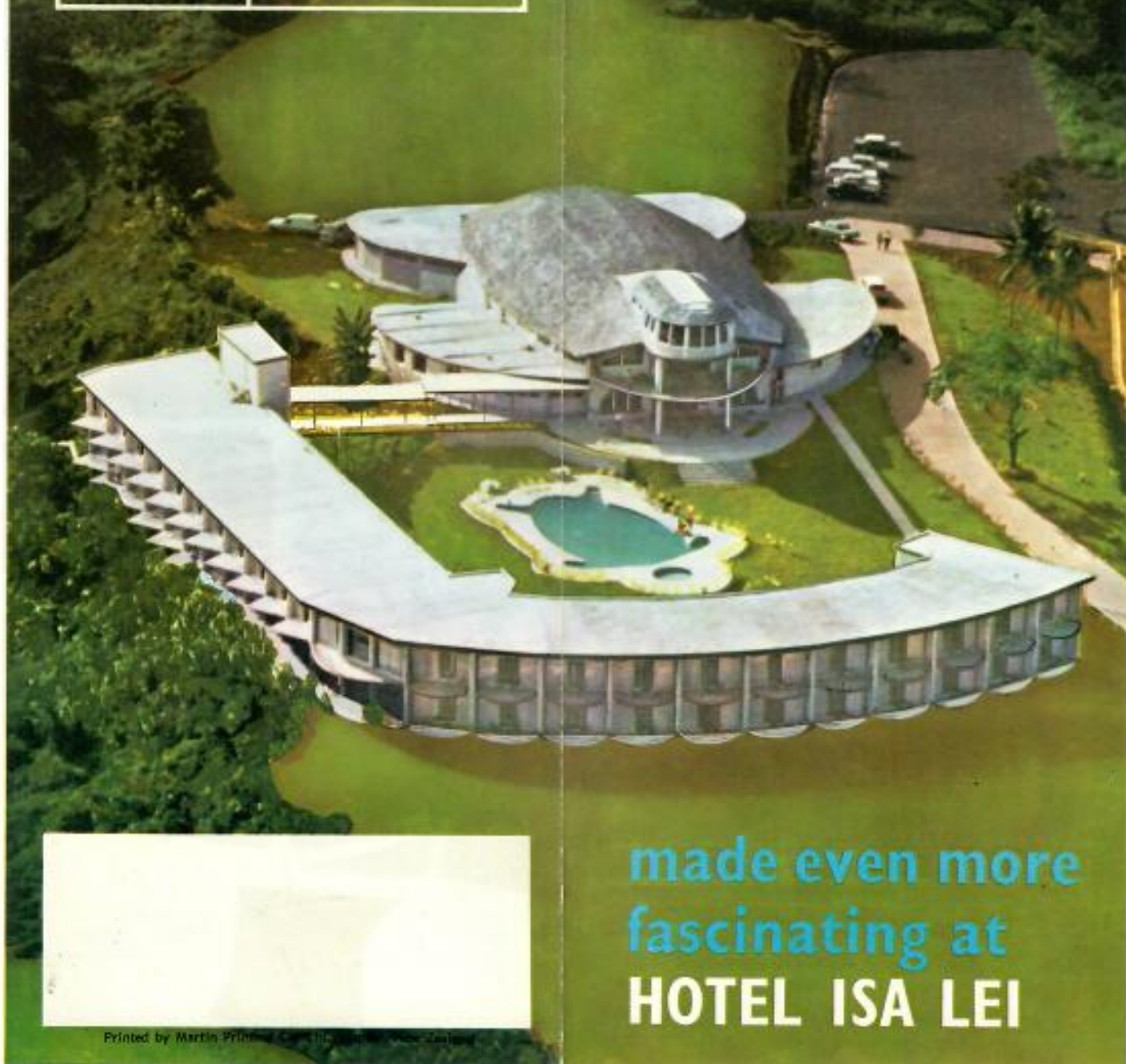
for *H. Haberi*
Harbert Haberi
Manager.



CONTACT:
HOTEL ISA LEI

P.O. Box 1351
Suva, Fiji Islands.
Cable: Turtle, Suva.

fiji



made even more
fascinating at
HOTEL ISA LEI

Printed by Martin Printing Co. Ltd., Singapore

A UNIQUE CONCEPT IN TOURIST RESORT HOTELS!

EVER HEARD OF A HOTEL SHAPED LIKE A TURTLE? TAKE A LOOK AT THE COVER AGAIN. SEE?

The Hotel Isa Lei is exciting in many ways. There's luxury living in 46 air-conditioned suites, superb cuisine in the restaurants, wining, dining and dancing in the cabaret lounge, exotic drinks to sample at the hotel's three bars, idle moments by the pool or on the putting green. And you're only a few minutes from Suva - Fiji's capital and the duty-free shopping centre of the South Pacific.

EXCITINGLY DIFFERENT CUISINE

In the hotel's restaurants the world-class cuisine combines a fabulous blend of Indian, Continental and traditional Fijian dishes.

Take a dip in the Isa Lei's turtle-shaped pool (the largest in Fiji), or stroll through the 10 acres of tropical gardens and lawns. There's fun to be had, too, at the hotel's barbecue nights, on the patio overlooking the picturesque Suva harbour.

THREE INFORMAL BARS

Sip your favourite drink, or sample one of the Isa Lei specialties in the Bula Bar, the Ika Bar, or the Turtle Head Bar, with its spectacular Suva Harbour view

A NIGHTCLUB ON YOUR DOORSTEP

Some of the fondest memories of your stay at Isa Lei will certainly include the Cabaret Night Club Lounge, where nightly floor shows of native entertainers and international acts are presented.





Every unit features luxurious, tasteful decor, air-conditioning, private terrace, telephone, bathroom. There are magnificent panoramic views of Suva Harbour, majestic mountain ranges and lush rain forests, from every room.



The many exquisite delights of Fiji are well within your reach - lace away on sun-drenched, palm-fringed beaches, take a deep-sea fishing trip, a coral island cruise, or tour through the colourful native villages. A shopping jaunt in Suva is a rare experience - duty-free goods, sari-clad Indians, Fijians in native dress and open-air markets all add to the enjoyment that is your Fijian holiday . . . that started at the Hotel Isa Lei.

CONTACT:

HOTEL ISA LEI

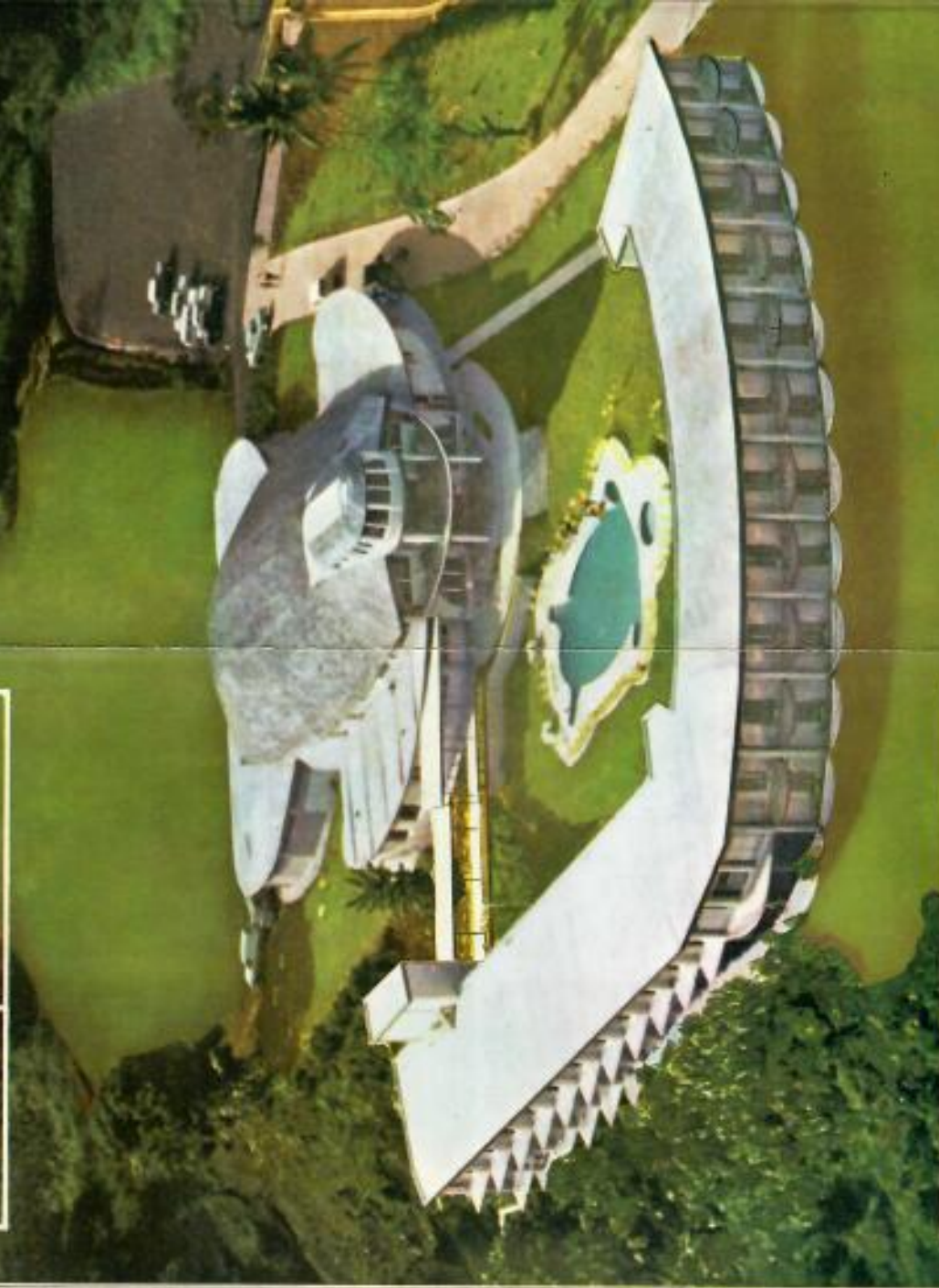
P.O. Box 1351

Suva, Fiji Islands.

Cable: Turtle, Suva.



Fiji



made even more
fascinating at
HOTEL ISA LEI